

This is a repository copy of *The effects of demineralisation and sampling point variability on the measurement of glutamine deamidation in type I collagen extracted from bone.*

White Rose Research Online URL for this paper:

<https://eprints.whiterose.ac.uk/98855/>

Version: Accepted Version

---

**Article:**

Simpson, Joanna Paula, Penkman, Kirsty Elizabeth Helena [orcid.org/0000-0002-6226-9799](https://orcid.org/0000-0002-6226-9799), Demarchi, Beatrice [orcid.org/0000-0002-8398-4409](https://orcid.org/0000-0002-8398-4409) et al. (6 more authors) (2016) The effects of demineralisation and sampling point variability on the measurement of glutamine deamidation in type I collagen extracted from bone. *Journal of archaeological science*. pp. 29-38. ISSN 0305-4403

<https://doi.org/10.1016/j.jas.2016.02.002>

---

**Reuse**

This article is distributed under the terms of the Creative Commons Attribution-NonCommercial-NoDerivs (CC BY-NC-ND) licence. This licence only allows you to download this work and share it with others as long as you credit the authors, but you can't change the article in any way or use it commercially. More information and the full terms of the licence here: <https://creativecommons.org/licenses/>

**Takedown**

If you consider content in White Rose Research Online to be in breach of UK law, please notify us by emailing [eprints@whiterose.ac.uk](mailto:eprints@whiterose.ac.uk) including the URL of the record and the reason for the withdrawal request.

# 1 The effects of demineralisation and sampling point variability on the 2 measurement of glutamine deamidation in type I collagen extracted from 3 bone

---

4

5 J P Simpson<sup>1</sup>, K E H Penkman<sup>1</sup>, B Demarchi<sup>2</sup>, H Koon<sup>6</sup>, M J Collins<sup>2</sup>, J Thomas-Oates<sup>1,3</sup>, B Shapiro<sup>7</sup>, M  
6 Stark<sup>4</sup>, J Wilson<sup>1,5</sup>

7

8 <sup>1</sup>Department of Chemistry, University of York, York

9 <sup>2</sup>Department of Archaeology, University of York, York

10 <sup>3</sup>Centre of Excellence in Mass Spectrometry, University of York, York

11 <sup>4</sup>Department of Biology, University of York, York

12 <sup>5</sup>Department of Mathematics, University of York, York

13 <sup>6</sup>Department of Archaeological Sciences, University of Bradford, Bradford

14 <sup>7</sup>Department of Ecology and Evolutionary Biology, University of California Santa Cruz, California

15

## 16 **Abstract**

17 *The level of glutamine (Gln) deamidation in bone collagen provides information on the diagenetic history of bone*  
18 *but, in order to accurately assess the extent of Gln deamidation, it is important to minimise the conditions that*  
19 *may induce deamidation during the sample preparation. Here we report the results of a preliminary investigation*  
20 *of the variability in glutamine deamidation levels in an archaeological bone due to: a) sampling location within a*  
21 *bone; b) localised diagenesis; and c) sample preparation methods. We then investigate the effects of pre-*  
22 *treatment on three bone samples: one modern, one Medieval and one Pleistocene. The treatment of bone with*  
23 *acidic solutions was found to both induce deamidation and break down the collagen fibril structure. This is*  
24 *particularly evident in the Pleistocene material (~80,000 years BP) considered in this study. We show that*  
25 *ethylenediaminetetraacetic acid (EDTA), when used as an alternative to hydrochloric acid (HCl) demineralisation,*  
26 *induces minimal levels of deamidation and maintains the collagen fibril structure. Areas of bone exhibiting*  
27 *localised degradation are shown to be correlated with an increase in the levels of Gln deamidation. This indicates*  
28 *that the extent of Gln deamidation could provide a marker for diagenesis but that sampling is important, and*  
29 *that, whenever possible, subsamples should be taken from areas of the bone that are visually representative of*  
30 *the bone as a whole. Although validation of our observations will require analysis of a larger sample set,*  
31 *deamidation measurements could be a valuable screening tool to evaluate the suitability of bone for further*  
32 *destructive collagen analyses such as isotopic or DNA analysis, as well as assessing the overall preservation of*  
33 *bone material at a site. The measure of bone preservation may be useful to help conservators identify bones that*  
34 *may require special long-term storage conditions.*

35  
36  
37

**Keywords:** Bone, degradation, glutamine deamidation, collagen, mass spectrometry.

## 38           **Section 1     Introduction**

39 Bone can survive in the burial environment for millions of years (Collins *et al.*, 1995) and can provide *direct*  
40 information about an organism during its life and *post mortem*. Bone contains both organic (mainly proteins)  
41 and inorganic components, with the most abundant protein being type I collagen (Rich and Crick, 1961). This  
42 fibrous protein consists of three polypeptide chains of similar length (two  $\alpha$ -1 chains and one  $\alpha$ -2 chain) that  
43 form a tightly-wound triple helix (Rich and Crick, 1961; Shoulders *et al.*, 2009; Viguet-Carrin *et al.*, 2006;  
44 Whitford 2008). The presence of the hydroxyapatite (mineral) crystals, which embed and protect the protein,  
45 contribute to the stability and preservation of bone over geological timescales (Turner-Walker 2008; Covington  
46 *et al.*, 2010).

47 The extraordinary preservation of collagen in bone has been exploited by archaeologists and palaeontologists  
48 seeking to address challenges such as species identification (Buckley *et al.*, 2009; Welker *et al.*, (2015)), diet  
49 (Ambrose and Norr, 1993) and radiocarbon age (Libby 1960; Reimer *et al.*, 2013). Recently, the radiocarbon  
50 dating of single amino acids such as hydroxyproline (Marom *et al.*, 2012; McCullagh *et al.*, 2010) and improved  
51 pre-treatment methods (Brock *et al.*, 2007; Brock *et al.*, 2010; Ramsey and Higham 2007) have enabled  
52 radiocarbon dating to be applied to samples as old as ~ 50 ka BP (van der Plicht and Palstra 2014). However,  
53 bones recovered from Middle and Early Palaeolithic and palaeontological sites must be dated by association  
54 with other materials, which can be used as substrates for other absolute dating methods (e.g. luminescence or  
55 U-series). Therefore a method that could date bone material *directly* would be a valuable tool to archaeologists  
56 and palaeontologists. Deamidation measurements could also be used as a screening tool to evaluate the  
57 suitability of bone for further destructive collagen analyses such as isotopic or DNA analysis, as well as assessing  
58 the overall preservation of bone material at a site. The measure of bone preservation may be useful to help  
59 conservators identify bones which may require special long term storage conditions.

60 Collagen could be an ideal substrate for dating because it has extraordinary potential to be preserved in the  
61 fossil record. It was predicted that collagen could survive up to 500,000 years in optimal (i.e. cold) burial  
62 conditions (Collins *et al.*, 1995); it has since been found that, even in temperate environments (e.g. in Europe),  
63 collagen can survive for much longer than this, up to 1.5 million years (Buckley and Collins, 2011). However, the  
64 extent of degradation of collagen increases with thermal age (Dobberstein *et al.*, 2009; Smith *et al.*, 2003),  
65 which is defined as an estimate of the equivalent age based upon thermal history, assuming the sample had  
66 been held at constant temperature -10 °C (www.thermal-age.eu). A relationship has been suggested between  
67 the thermal age and the level of glutamine deamidation (derived from composite estimates of deamidation in  
68 several peptides) observed in extracted bone collagen (van Doorn *et al.*, 2012; Wilson *et al.*, 2012). Given the  
69 difficulties of using amino acid racemization dating (AAR) to provide robust age information on collagen (Bada  
70 and Helfman 1975), such a link could provide the key to age estimation for bone samples beyond the range of  
71 <sup>14</sup>C dating. AAR and deamidation measurements in bone do both share some of the same issues, i.e. bone is  
72 ultimately an open system (Dobberstein, 2008; Grün, 2006; Pike *et al.*, 2002). However, one advantage of mass  
73 spectrometry is that, although some collagen may be leached/diffused out of the bone, we can be sure, using  
74 MS/MS analysis of the peptides, that what we are considering is indeed collagen, whereas AAR analyses  
75 incorporates amino acids from all remaining bone proteins, in addition to any contaminant amino acids. The  
76 data reported by van Doorn *et al.*, (2012) showed high variability (ranging from 40% to 90%) in the levels of

77 glutamine deamidation in peptides extracted and analysed from bones of the same age, obtained from the  
78 same site.  
79 Here, we explore the potential causes of this variation, and we test two hypotheses: 1) that variation may occur  
80 due to natural variability within the biological tissue; and 2) that variation may be induced in the laboratory,  
81 during sample preparation. First, we perform a series of experiments that focus on preservation and decay of a  
82 single, well-preserved bovine metatarsus of Medieval age. From this bone we determine the variability of  
83 glutamine deamidation using mass spectrometry (MS) as a function of:

- 84 1) the location within the bone from which the sample was taken (section 3.1);
  - 85 2) the visible preservation of the bone - comparing degraded and non-degraded sections (Section 3.2);
  - 86 3) demineralisation method - comparing the effects of two demineralisation methods (using hydrochloric  
87 acid (HCl) and ethylenediaminetetraacetic acid (EDTA)) on the levels of deamidation (Sections 3.3 and  
88 3.4).
- 89

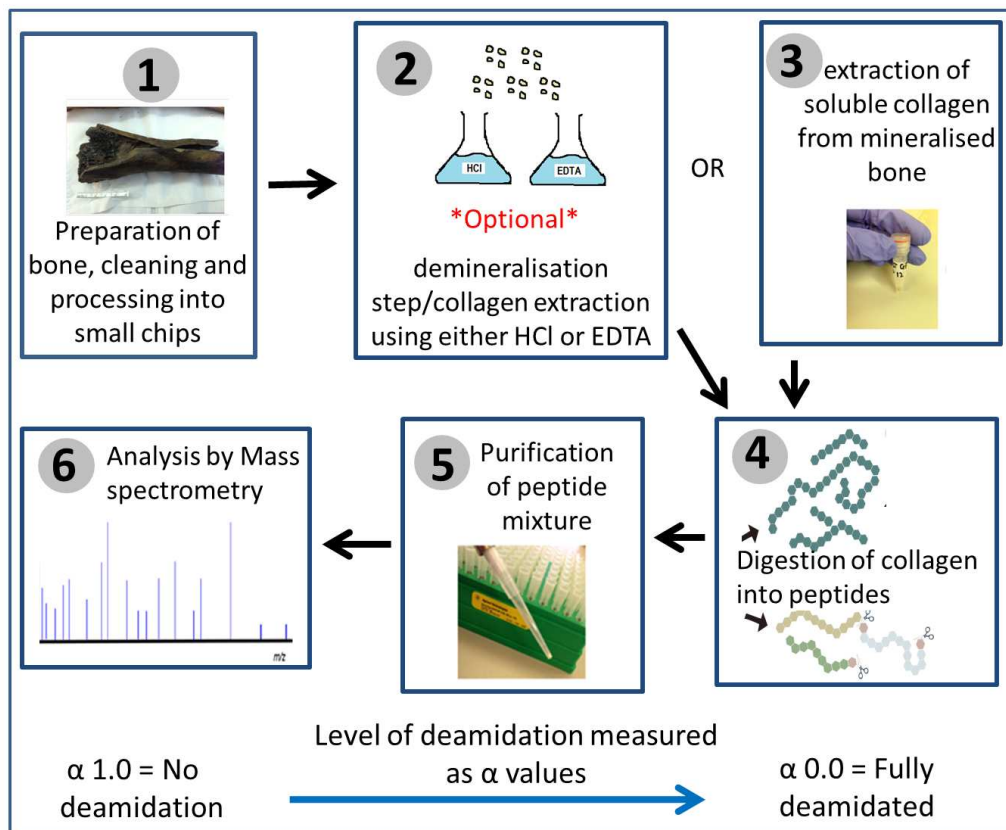
90 Second, we explore the preservation of collagen fibrils in samples of different ages, when demineralised using  
91 either HCl or EDTA. This was done using TEM to visualise three bones that differ considerably in age: modern,  
92 Medieval (bone used in previous sections), and Pleistocene (~80,000 years old) (Section 3.5).

93

94 Our aim is to improve the understanding of the effects that sample location and pre-treatment methods may  
95 have on collagen preservation. This will allow not only more accurate determination of the extent of  
96 deamidation in bone collagen, but also may be useful for other analytical methods that require the removal of  
97 mineral, such as radiocarbon dating, isotopic analysis or species identification through collagen mass finger  
98 printing (ZooMS). The results presented here derive from a single bone, and therefore need to be further  
99 investigating using a range of bone types, preservation levels and ages. Nonetheless, our results provide data  
100 that are key to the appropriate interpretation and exploitation of the suggested relationship between  
101 deamidation levels and diagenetic history.

## 102 **Section 2 Methods**

103 An overall schematic of the process we have used for the preparation, extraction and analysis of collagen by  
104 mass spectrometry is shown in Figure 1.



105

106 **Figure 1:** A schematic of sample preparation protocols. (1) Samples are cleaned in 50 mM ammonium bicarbonate at room temperature  
 107 overnight. The sample is then cut into small pieces as required; (2) For the demineralisation experiments, the bone is demineralised using  
 108 either HCl or EDTA, gelatinised, ultrafiltered, freeze dried and the resulting lyophilised collagen is re-suspended in ammonium bicarbonate  
 109 solution (3) If step two has not been performed then collagen is extracted directly from the mineralised bone by warming in ammonium  
 110 bicarbonate solution (at 65 °C) for one hour; (4) A tryptic digestion of the extracted protein is carried out overnight in ammonium  
 111 bicarbonate solution at 37 °C ; (5) The resulting peptide mixture is purified using solid phase ZipTips; (6) the peptide mixture is analysed by  
 112 MALDI-MS (section 2.5); the spectrum is used to estimate the level of deamidation occurring in specific peptides (section 2.6). The  
 113 calculated glutamine deamidation level is given by the  $\alpha$ -value, with a value of 1.0 representing no deamidation and 0.0 indicating complete  
 114 deamidation of glutamine to glutamic acid

115

## 116 Section 2.1 Preparation and cleaning of bone samples

117 All three bone sample types (modern, Medieval and Pleistocene) were cleaned at room temperature (~22 °C) by  
 118 soaking in 50 mM ammonium bicarbonate solution (pH 8.0, prepared in purified water, 18.0 M $\Omega$ ) overnight.  
 119 After cleaning, the bones were allowed to dry in a fume hood at room temperature.

### 120 Section 2.1.1 The Medieval bovine metatarsus.

121 The main sample used in this analysis was a bovine metatarsal bone (Figure 1) from the site Tanner Row (York,  
 122 UK), excavated by York Archaeological Trust. The bone is from an un-stratified context but is thought to date  
 123 between the 11th and mid-13th centuries. This bone was sub-sampled first by slicing into 17 cross sections;  
 124 some of these cross sections were then further sub-sampled by breaking parts of them into small chips. Because  
 125 deamidation may be induced thermally (van Doorn *et al.*, 2012), after cleaning (see Section 2.1), the bone was  
 126 cut into 17 slices (~ 3 mm in width) using a diamond-edged water-cooled band saw (Figure 2). The separate  
 127 slices were then cleaned in 50 mM ammonium bicarbonate solution and left to dry for one week in a fume hood

128 at room temperature. After slicing the bone, darker sections in the top centre of each of the slices were  
129 observed (Figure 2). These darker sections appeared macroscopically more degraded than the surrounding  
130 compact bone and were therefore removed using pliers before further analysis. The remaining pieces of each  
131 slice were immersed in liquid nitrogen for 60 seconds and then removed and broken into small chips using a  
132 small impacting hammer; the chips were then sieved through a 2 mm metal sieve and the retained chips (i.e.  
133 those of more than 2 mm) were rinsed in purified water and subjected to a range of different collagen  
134 extraction procedures (Figure 1; Sections 2.2, 2.3 and 2.4).

#### 135 Section 2.1.2 Pleistocene bone

136 A fragment of bison metapodial bone excavated from a permafrost site in the Klondike region of Canada's  
137 Yukon Territory was investigated. This bone was AMS radiocarbon dated at the Center for Accelerator Mass  
138 Spectrometry, Lawrence Livermore National Laboratory, California USA, which provided in a non-age estimate  
139 ( $>50,300$   $^{14}\text{C}$  years BP; CAMS 157517). This sample was found in association with a volcanic ash (tephra) layer,  
140 Sheep Creek-K, that has been dated to  $\sim 80,000$  years old (Westgate *et al.*, 2008). As the exact age of this sample  
141 is unknown, we refer to this sample throughout this paper as Pleistocene in age. The bone piece was cleaned  
142 prior to all analyses as described in Section 2.1.

#### 143 Section 2.1.3 Modern bone

144 A piece of modern bovine tibia obtained from a local butcher (Newcastle) was prepared by Dr C. Smith (Smith *et al.*, 2005): the periosteum and marrow were removed with a scalpel and the bone was then sawn into chunks  
145 and defatted for 24 hours in acetone. The chunks were freezer-milled under liquid nitrogen.

### 147 Section 2.2 Extraction of collagen from mineralised bone using ammonium 148 bicarbonate

149 50 mM ammonium bicarbonate (pH 8) was added to each sample (approximately 100  $\mu\text{L}$  per 30 mg of bone).  
150 The sample was then warmed for one hour at 65  $^{\circ}\text{C}$  (adapting extraction procedures described in van Doorn *et al.*, 2011).  
151

### 152 Section 2.3 Hydrochloric acid demineralisation/collagen extraction

153 For demineralisation in hydrochloric acid (HCl) the standard preparation protocol for stable isotope analyses of  
154 Ambrose (1990) was adapted: each chip was placed in a 15 mL polypropylene centrifuge tube and 5 mL of 0.6 M  
155 HCl (pH 1) added. The samples were stored at 2 – 8  $^{\circ}\text{C}$  and the HCl replaced every three days. After 10 days the  
156 samples appeared to be visually demineralised, and the acid-insoluble fraction of collagen was gelatinised in 5  
157 mL of pH 3.0 HCl (purified water adjusted to pH 3.0 with 0.6 M HCl solution) at 80  $^{\circ}\text{C}$  for 24 hours, filtered  
158 through a 30 kDa centrifugal filter (Amicon) and freeze-dried overnight. Prior to MS analysis the lyophilisate was  
159 resuspended in 50 mM ammonium bicarbonate (pH 8.0) at a concentration of 2 mg/mL.

### 160 Section 2.4 EDTA demineralisation/collagen extraction

161 The EDTA demineralisation protocol of Koon *et al.* (2012) was adapted as follows. 0.5 M EDTA solution was  
162 prepared by dissolving 93.06 g of EDTA disodium salt in 500 mL of purified water, and the pH was then adjusted

163 to 7.4 using 0.5 M NaOH. Each bone chip was placed in a 15 mL polypropylene centrifuge tube and 5 mL of 0.5  
164 M EDTA (pH 7.4) added. The samples were stored at room temperature on an electric sample rocker, and the  
165 EDTA solution was replaced every three days. After 20 days the samples appeared to be visually demineralised,  
166 and the acid-insoluble fraction of collagen was gelatinised in 5 mL of pH 3.0 HCl at 80 °C for 24 hours, filtered  
167 through a 30 kDa centrifugal filter (Amicon) and freeze-dried. The resulting lyophilised collagen was then  
168 resuspended in 50 mM ammonium bicarbonate (pH 8.0) at a concentration of 2 mg/mL.

## 169 Section 2.5 MALDI-MS analysis

170 The collagen extracts suspended in ammonium bicarbonate solution (pH 8.0)) were digested with 1 µL of  
171 porcine trypsin solution (0.4 µg/µL 50 mM acetic acid) overnight at 37 °C. Digests were purified using 100 µL  
172 C18 solid-phase tips (Millipore ZipTips). After loading, the tips were washed with 0.1% trifluoroacetic acid (TFA)  
173 solution. Peptide mixtures were then eluted in 50 µL of 50:50 (v/v) acetonitrile: 0.1% TFA). The resulting peptide  
174 mixtures, consisting predominantly of tryptic peptides, were analysed using matrix-assisted laser  
175 desorption/ionization time of flight mass spectrometry (MALDI-TOF-MS). A volume of 1 µL of sample solution  
176 was spotted on a ground steel MALDI target plate, followed by 1 µL of α-cyano-4-hydroxycinnamic acid matrix  
177 solution (1% in 50% ACN/0.1% TFA (w/v/v)). The sample and the matrix solutions were mixed together on the  
178 plate and allowed to air-dry. Each sample was spotted on to the MALDI target plate in triplicate. Each spot was  
179 analysed in reflector mode using a calibrated ultraflex III (Bruker Daltonics, Bremen, Germany) MALDI-TOF  
180 instrument. Spectra were analysed using flexAnalysis software version 3.0 (Bruker Daltonics).

181

## 182 Section 2.6 Determining the level of deamidation in a peptide

183 The deamidation of glutamine results in an overall mass increase of 0.984 Da. One disadvantage of the TOF  
184 instrumentation used in this work is that due to the insufficient resolving power of the mass analyser, it was not  
185 possible to resolve the deamidated and undeamidated signals: the  $n$ th peak of the deamidated peptide signal  
186 (typically the mono-isotopic signal) overlaps the  $(n+1)^{\text{th}}$  peak of the undeamidated form (typically the signal for  
187 the species containing one  $^{13}\text{C}$  atom). The extent of deamidation of glutamine (Q), converting it to glutamic acid  
188 (E) can be estimated by deconvolution of the two overlapping distributions as described in Wilson *et al.* (2012).  
189 For a peptide containing just one glutamine residue, a value between zero and one (referred to as the  $\alpha$ -value)  
190 denotes the proportion of glutamine that is deamidated, and is determined by optimizing the fit of overlapping  
191 theoretical distributions with the experimental distributions. An  $\alpha$ -value of 1 indicates no deamidation, while a  
192 value of 0 results from complete deamidation. The method can be extended to peptides with more than one  
193 glutamine residue. Each sample was analysed in triplicate by MALDI-MS and the  $\alpha$ -value obtained from a  
194 weighted average of the three spectra, where the weights reflect the signal to noise ratio (S/N) of each peptide.  
195 Full details are given in Wilson *et al.* (2012). The code used to calculate deamidation levels is available as an R  
196 package from GitHub (<https://github.com/franticspider/q2e.git>).

197

## 198 Section 2.7 Analysis of collagen fibrils by transmission electron microscopy (TEM)

199 The modern, Medieval and Pleistocene bovid bone samples were prepared for TEM analysis following the  
200 protocol of Koon *et al.* (2012). Small bone chips around 60 mg in weight from each sample were treated either  
201 with 0.6 M HCl or 0.1 M EDTA. Once demineralisation was complete (approx. 2 weeks) the demineralisation  
202 solutions were discarded and the samples were prepared for TEM analysed following the protocol of Koon *et al.*  
203 (2012), An FEI Tecnai G2 transmission electron microscope fitted with a CCD camera was used for analysis. The  
204 typical optical settings used were as described in Koon *et al.* (2012) with a beam setting of 120 kV.

205

## 206 Section 3 Results

207 The results obtained for the Medieval bone are described in terms of the variation in  $\alpha$ -values calculated from  
208 the MALDI-MS data with respect to: a) the sub-sampling location (and localised areas displaying “macroscopic  
209 degradation” on the bone) and b) the collagen extraction protocol. These results are then linked to the  
210 structural properties observed in collagen extracted from modern, Medieval and Pleistocene bone, investigated  
211 by TEM (Section 3.5).

### 212 Section 3.1 Variation of Gln deamidation as a function of sampling location.

213 To investigate the variability in levels of glutamine deamidation ( $\alpha$ -values) between different sampling locations  
214 within a bone, chips were sub-sampled from parts of macroscopically well-preserved sections of slices 1 (~3  
215 mm from the right), 2 (at ~ 15 mm) 3 (at ~27 mm), 4 (at ~39 mm) and 5 (at ~ 117 mm) were sampled (Figure 2).  
216 Two chips were taken from each slice, and extracts from each of these two chips were analysed in triplicate by  
217 MALDI-MS. Each triplicate analysis generated one  $\alpha$ -value; the two  $\alpha$ - values generated for each chip were then  
218 averaged, and the average  $\alpha$ -values for each slice are what is represented on Figure 2. Although, initially,  
219 twelve peptides were investigated (Table 1),  $\alpha$ - values are only reported here for the ten collagen peptides that  
220 were observed in collagen extracts from all five slices (Figure 2).

221

222 **Table 1:** 12 peptides that are observed in MALDI mass spectra of tryptic digests of bovine type I collagen and contain at least one glutamine  
223 residue. Where possible the theoretical amino acid sequence of the peptides has been demonstrated by product ion analysis. For peptides  
224 where this was not possible, due to poor spectral quality, sequences were taken from published data (Wilson *et al.*, 2012) and assigned on  
225 the basis of the peptides’ accurate  $m/z$  values

226 \* Assignment of sequence demonstrated using product ion spectrum.

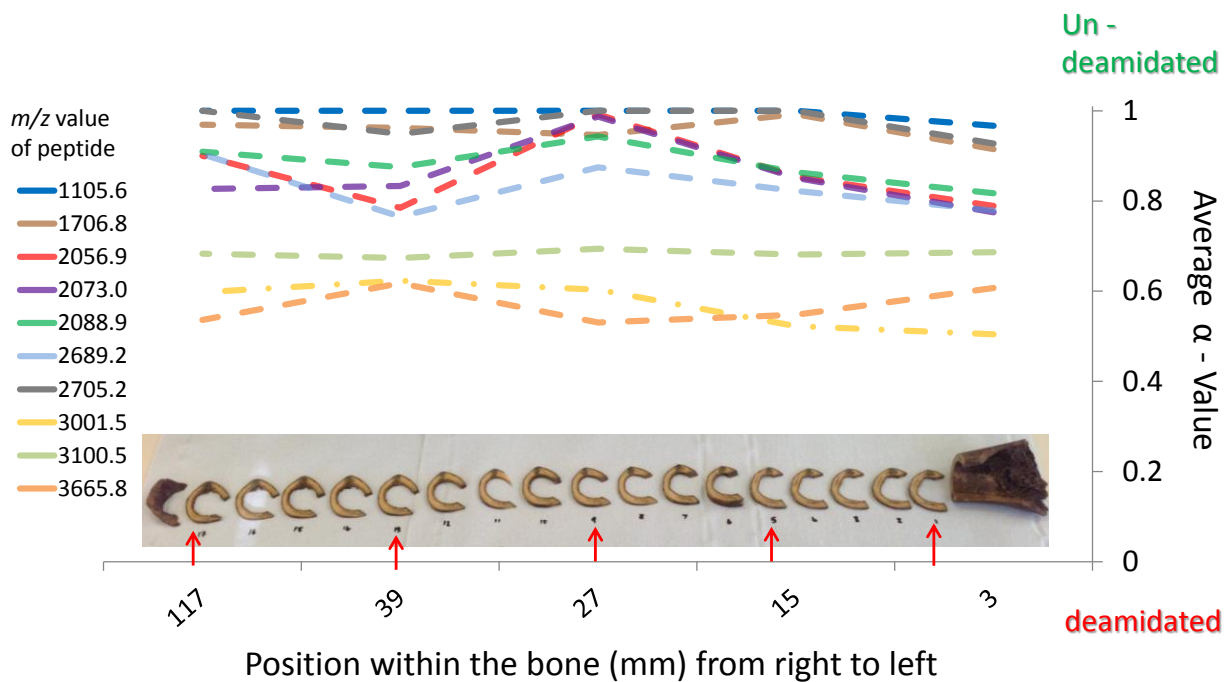
[M + H] <sup>+</sup>	Peptide sequence	Collagen chain	Position in collagen chain
836.44	GPAGPQ <sup>*</sup> GPR <sup>*</sup>	COLL 1A1	[1084-1092]
1105.57	GVQ <sup>*</sup> GPPGPAGPR <sup>*</sup>	COLL 1A1	[685-696]
1690.77	DGEAGAQ <sup>*</sup> GPPGPAGPAGER	COLL 1A1	[612-630]
1706.77	DGEAGAQ <sup>*</sup> GPPGPAGPAGER	COLL 1A1	[612-630]



2056.98	TGPPGPAGQDGRPGPPGPPGAR*	COLL 1A2	[552-573]
2073.01	GAPGADGPAGAPGTPGPQGIAGQR	COLL 1A1	[934-957]
2089.01	GAPGADGPAGAPGTPGPQGIAGQR	COLL 1A1	[934-957]
2689.26	GFSGLQGPPGPPGPSGEQGPSGASGPAGPR	COLL 1A1	[1111-1140]
2705.26	GFSGLQGPPGPPGPSGEQGPSGASGPAGPR*	COLL 1A1	[1111-1140]
3001.50	GPSGEPGTAGPPGTPGPQGLLGAPGFLGLPGSR	COLL 1A2	[845-877]
3100.41	GLPGGPGAPGPQGFQGGPPGEPGEGASGPMGPR*	COLL 1A1	[187-219]
3665.54	GSQGSQGPAGPPGPPGPPGPSGGYEFQFDGDFYR*	COLL 1A2	[1079-1116]

227

228 Figure 2 shows the average  $\alpha$ -value for each peptide from the two chips from each slice. Some peptides  
 229 produce similar  $\alpha$ -values regardless of the sampling location (for example peptides with  $m/z$  values 3100.5,  
 230 1105.6, 1706.8, 2705.2), but other peptides (for example, peptides with  $m/z$  values 2056.9, 2073.0, 2689.1 and  
 231 3665.8 in particular) show greater variability with sampling location.



232

233 **Figure 2:**  $\alpha$ -values for 10 peptides, in 10 samples, obtained from two chips from each of the five different positions (slices 1, 5, 9, 13 and 17)  
 234 across the length of a Medieval bovine metatarsal bone. The average value for the two chips from each slice is plotted

235

236 Considering each slice as a group, the usual equations for within-group and between-group variance can be  
 237 used to calculate the variances within and between slices for each peptide (Snedecor 1934). Thus, the between-  
 238 slice variance is given by equation 1:

$$239 \quad V_b = \frac{1}{(S-1)} \sum_{s=1}^S n_s (\bar{x}_s - \bar{\bar{x}})^2 \quad (1)$$

240 where  $S = 5$  is the number of slices,  $n_s$  is the number of  $\alpha$ -values from each slice (i.e. 2, here),  $\bar{x}_s$  is the mean  $\alpha$ -  
 241 value for slice  $s$  and  $\bar{x}$  is the grand mean, taken over all slices and the within-slice variance is given by equation  
 242 2:

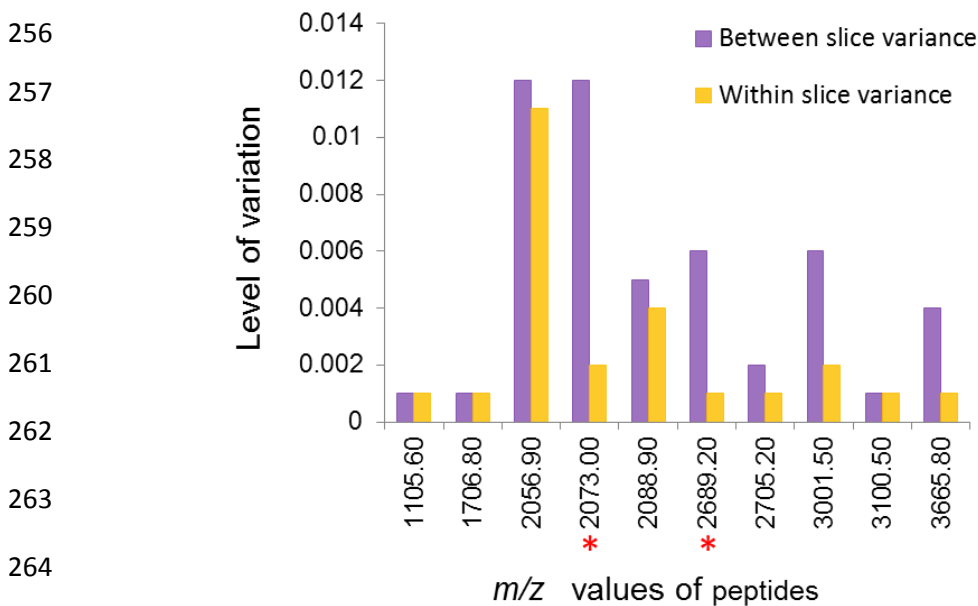
$$243 \quad V_w = \frac{1}{(N - S)} \sum_{s=1}^S \sum_{i=1}^{n_s} (x_{is} - \bar{x}_s)^2 \quad (2)$$

244 where  $N = 10$  is the total number of  $\alpha$ -values and  $x_{is}$  is the  $i$ th  $\alpha$ -value from slice  $s$ . Table 2 and Figure 3 show  
 245 the within-slice and between-slice variances for the ten peptides, together with the p-values obtained for F-  
 246 tests comparing the two variances. The variance between slices is shown to be significantly greater than the  
 247 variance within slices (at the 95% confidence level) for just two peptides, those with  $m/z$  values 2073.0 and  
 248 2689.2, although with a p-value of 0.038 for both the evidence against the null hypothesis is not strong. The  
 249 peptide with  $m/z$  value 2056.9 has the highest level of within-slice variation, but is of a similar level to the  
 250 variance between slices. The remaining peptides also show similar levels of variation within and between-slices.

251 **Table 2:** The variation in  $\alpha$ -values obtained from 10 peptides measured in tryptic digests of collagen, extracted from bone chips of different  
 252 slices compared with the variation obtained from replicate chips of the same slice. The p-values for F-tests show that, in general, the  
 253 between-slice variance is not significantly greater than the within-slice variance. \*denotes statistically significant values (at the 95%  
 254 confidence level)

<i>m/z</i> of peptide	1105.6	1706.8	2056.9	2073.0	2088.9	2689.2	2705.2	3001.5	3100.5	3665.8
Between-slice variance, $V_b$	0.001	0.001	0.012	0.012	0.005	0.006	0.002	0.006	0.001	0.004
Within-slice variance, $V_w$	0.001	0.001	0.011	0.002	0.004	0.001	0.001	0.002	0.001	0.001
p-value for F test	0.486	0.486	0.451	0.038*	0.398	0.038*	0.233	0.13	0.486	0.08

255

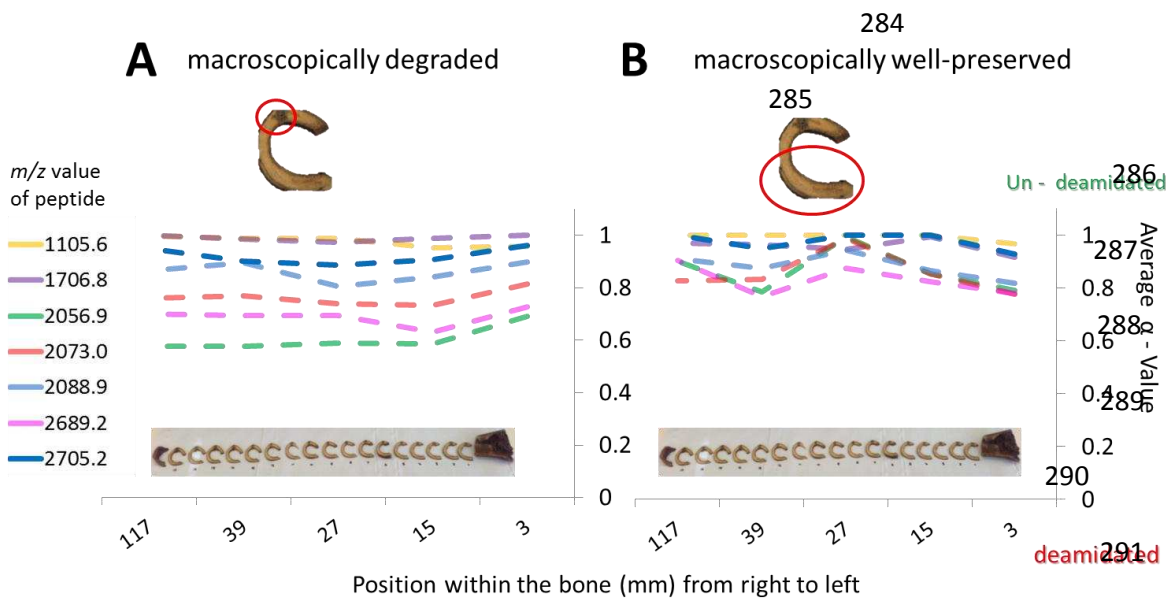


265  
 266  
 267  
 268  
 269  
 270  
 271  
 272  
 273  
 274  
 275  
 276  
 277  
 278  
 279  
 280  
 281  
 282  
 283

**Figure 3:** The variation in  $\alpha$ -values obtained from 10 peptides measured in trypsin digests of collagen extracted from bone chips of different slices compared with the variation obtained from replicate chips of the same slice. The P-values for F-tests show that, in general, the between-slice variance is not significantly greater than the within-slice variance. \*denotes statistically significant values (at the 95% confidence level)

### Section 3.2 Variation due to localised diagenesis.

In order to investigate the effect of localised diagenesis on  $\alpha$ -values, two chips were taken from the degraded sections of slices 1, 5, 9, 13, and 17 (Figure 4) and the  $\alpha$ -values compared with those obtained from chips in macroscopically well-preserved areas of the same bone slice. The spectra obtained from chips from locally degraded regions contained fewer peaks than those from the macroscopically well-preserved chips, with the heavier peptides ( $m/z$  3001.5, 3100.5 and 3665.8) absent in spectra of samples from degraded regions. In the spectra from visibly degraded chips, there were a total of 106 observations of these peptides in comparison to 114 observations in the spectra from well-preserved chips (out of a possible 120). In most cases, the average  $\alpha$ -values obtained for macroscopically degraded sections were lower (i.e. the peptides were overall more deamidated) than those extracted from macroscopically well-preserved areas. Figure 4 shows the average  $\alpha$ -values for the two chips in each case. Interestingly, the four peptides that show least deamidation in well-preserved chips ( $m/z$  values 1105.6, 1706.7, 2088.9 and 2705.2, with mean  $\alpha$ -values of 0.99, 0.96, 0.88 and 0.98 respectively) also show little deamidation in the degraded chips (mean  $\alpha$ -values of 0.98, 0.99, 0.86 and 0.92 respectively).



292  
 293  
 294  
 295  
 296

**Figure 4:** Comparison of  $\alpha$ -values obtained from peptides observed in tryptic digests of collagen extracted from macroscopically degraded sections of bone (A: left) with those from macroscopically well-preserved areas of the same slice (B: right). Here  $\alpha$ -values are only plotted for the seven peptides which were observed in all five slices

297 Other peptides ( $m/z$  values 2056.9, 2073.0 and 2689.2) show greater changes between the visibly well-  
298 preserved (mean  $\alpha$ -values of 0.86, 0.85 and 0.83 respectively) and degraded areas (mean  $\alpha$ -values of 0.59, 0.76  
299 and 0.69 respectively). Figure 4 shows that the variation in deamidation levels along the length of the bone is  
300 slightly less for the degraded samples than the spread for the well preserved region-derived samples. This can  
301 also be seen in Supplementary Table S1, which gives the average difference between slices in comparison to the  
302 difference between chips from the same slice. Despite generally higher  $\alpha$ -values in the well-preserved samples,  
303 the levels of deamidation along the length of the diaphysis is not consistent in some peptides. It is possible that  
304 the greater variation in  $\alpha$ -alpha-values for sub-samples taken from the well-preserved slices may be due to the  
305 fact that the degraded sub-samples were taken from a smaller region of the bone. As we have seen degraded  
306 samples with much lower alpha-values than those presented in Figure 4, we do not believe that the alpha-  
307 values for the degraded sub-samples represent an endpoint of deterioration.

308

### 309 Section 3.3 The effects of acid demineralisation on deamidation.

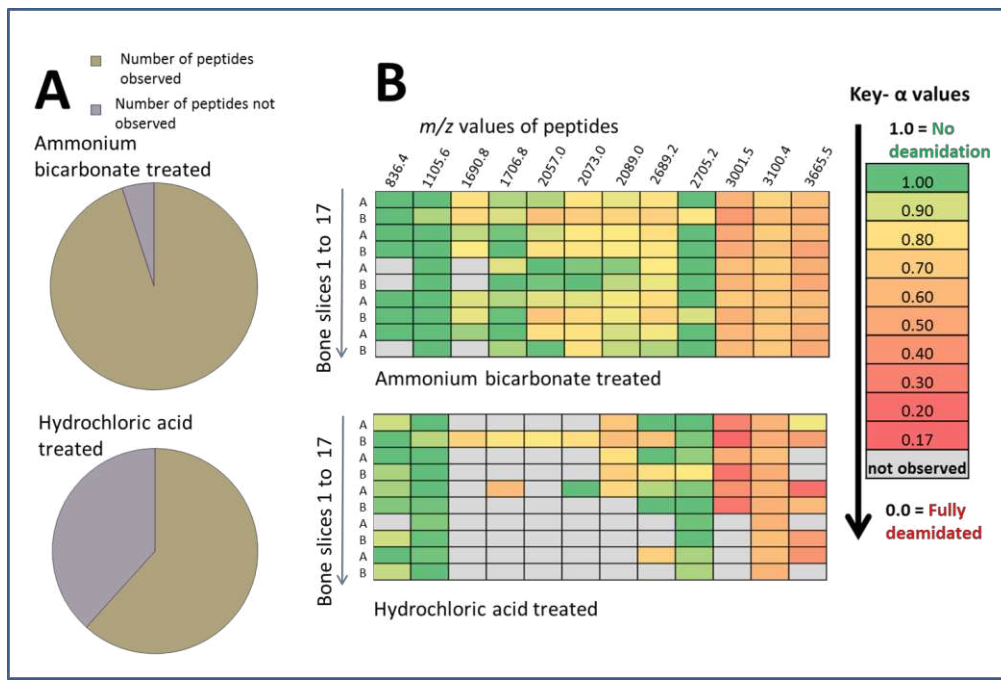
310 The removal of mineral using HCl is common in most bone preparation techniques, such as those for isotope  
311 analysis and radiocarbon dating (e.g. Brock *et al.*, 2007). An alternative to the use of HCl for the decalcification  
312 of bone is the use of EDTA as a chelating agent. EDTA decalcification is often used when trying to minimise  
313 damage to the surface histology of bone (Jonsson, Tarkowski and Klareskog, 1986; Tuross, 2012).

314 HCl demineralisation was compared with the ammonium bicarbonate collagen extraction method developed by  
315 van Doorn *et al.* (2011), which does not involve the removal of mineral from the bone. We assessed the effects  
316 of HCl demineralisation on the overall deamidation using bone chips from macroscopically well-preserved areas  
317 of slices 1, 5, 9, 13 and 17. The  $\alpha$ -values of 12 peptides produced after HCl treatment (Table 2) were compared  
318 with those determined from chips from similarly well-preserved areas of the same slice, in which collagen was  
319 extracted using the ammonium bicarbonate extraction method. The 12 peptides were observed less frequently  
320 in spectra from samples treated with HCl than from those treated with only ammonium bicarbonate (Figure 5A).  
321 In the spectra obtained from the HCl-treated samples, only 74 (of a possible 120) observations of the peptides  
322 were recorded, compared with 114 in spectra from mineralised collagen extracted with ammonium bicarbonate  
323 (Figure 5A). This suggests the HCl treatment affects the peptides detected in the samples. Five of the twelve  
324 peptides ( $m/z$  1690.8,  $m/z$  1706.8,  $m/z$  2057.0,  $m/z$  2073.0,  $m/z$  2089.0) were observed in less than half of the  
325 HCl-treated samples. It should be noted that each of these peptides has an aspartic acid on the N-terminal side  
326 of glycine. The remaining peptides, observed in at least half of the HCl-treated samples, did not contain aspartic  
327 acid.

328 In observed peptides, the  $\alpha$ -values calculated for samples treated with HCl were generally lower than those  
329 from samples treated only with ammonium bicarbonate (Figure 5 (B)), indicating greater levels of deamidation  
330 in HCl-treated samples.

331

332  
333  
334  
335  
336  
337  
338  
339  
340



341  
342  
343  
344

**Figure 5:** (A) A comparison of the number of times the peptides in Table 1 were observed in spectra obtained from samples treated with HCl or ammonium bicarbonate solutions. (B) Comparison of  $\alpha$ -values obtained for these 12 peptides in spectra from macroscopically well-preserved areas of the Medieval bone (2 each from slice: 1, 5, 9, 13, and 17) after treatment with ammonium bicarbonate (top) or HCl (bottom)

345

### 346 Section 3.4 Effects of demineralisation time on $\alpha$ -values.

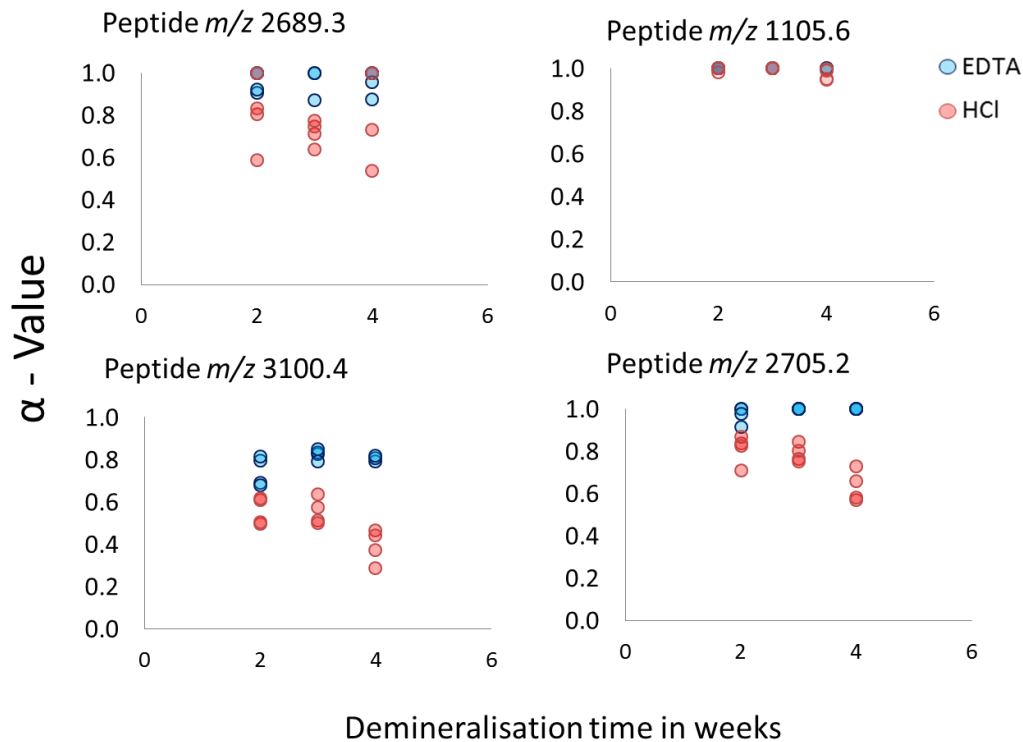
347  
348  
349  
350  
351  
352

In order to compare the effects of HCl (pH 1) and EDTA (pH 7.4) on glutamine deamidation, the remaining unanalysed chips from the macroscopically well preserved sections of the 17 slices of bovine metatarsal were mixed together. A total of 24 chips from this sample set were demineralised for up to four weeks in either HCl or EDTA (see sections 2.3 and 2.4). For each demineralisation method, four chips were removed from the solutions after 2, 3 or 4 weeks. The collagen was extracted as described in sections 2.3 and 2.4. The resulting collagen extracts were digested and purified as described in section 2.5 and analysed using mass spectrometry.

353  
354  
355  
356  
357  
358  
359  
360  
361

For each of the samples, levels of glutamine deamidation were calculated (section 2.6). The patterns observed can be split into three categories: 1) peptides (i.e. *m/z* 2689.3, 2705.2 and 3100.4) which showed lower  $\alpha$ -values (i.e. more deamidation) with increased variability when treated with HCl than EDTA (Figure 6). 2) peptides (i.e. *m/z* 2705.2 and 3100.4) which showed increased levels of deamidation on acid treatment over time, with  $\alpha$ -values for *m/z* 2705.2 ranging from 0.57 – 0.87 in HCl-treated samples; this peptide shows little or no deamidation in samples treated with EDTA over the four week period, with values of EDTA treated samples producing  $\alpha$ -values ranging from 0.92 – 1.00. 3) Some of the smaller peptides (*m/z* values 836.4 and 1105.6) showed little difference in deamidation levels regardless of the demineralisation procedure used, or the length of time they were treated. Examples from the three categories are shown in Figure 6.

362



363

364 **Figure 6:** Comparison of α-values obtained for four peptides after demineralisation in HCl or EDTA for 2, 3 or four weeks. Peptides with  
 365 smaller masses such as 1105 showed little deamidation regardless of the demineralisation method used. In samples pre-treated with HCl  
 366 three peptides (*m/z* 2689.3, 2705.2 and 3100.4) showed an increase in deamidation over time, in contrast to EDTA pre-treatment which did  
 367 not appear to induce deamidation over time

368

369 **Section 3.5 Comparison of collagen fibril structure in modern, Medieval and**  
 370 **Pleistocene bone demineralised with either EDTA or HCl using transmission**  
 371 **electron microscopy (TEM).**

372

373 To investigate the effect of different demineralisation methods on the structure of collagen fibrils, three bovid  
 374 bones of different ages, modern, Medieval and Pleistocene were used. Bone chips from each sample type were  
 375 sampled and the mineral from each sample was removed using either HCl or EDTA. The extracted collagen was  
 376 visualised using TEM and the preservation state and average width of the collagen fibrils was investigated.  
 377 Measurements of the width were taken at ten points along the length of 20 fibrils, resulting in a total of 200  
 378 measurements for each of the six samples. The distribution of measurements was assessed to be plausibly  
 379 normal for each sample and the statistical significance of the difference in mean fibril width between HCl and  
 380 EDTA treated samples was determined using a two-tailed, two sample t-test for unequal variances for each of  
 381 the modern, Medieval and Pleistocene samples. In each case, the average fibril width was found to be  
 382 significantly larger for HCl-treated samples than in EDTA-treated samples (Table 3).

383

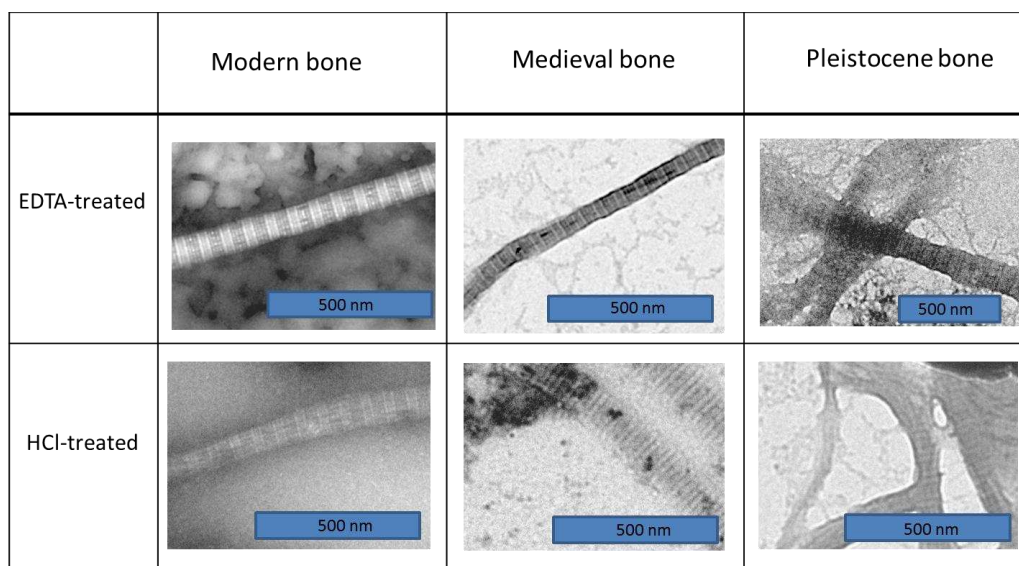
384  
385  
386

**Table 3:** Average fibril width measurements from three samples of bone of different ages (modern, Medieval and Pleistocene). Fibril widths measured in all three samples were found to be statistically significantly different at the 95 % confidence level, when prepared using the two pre-treatment methods. In each case, the t-test shows the average fibril width is significantly greater in HCl-treated samples.

Sample	Mean fibril width (HCl treated)	SD	Mean fibril width (EDTA treated)	SD	p-value
Modern bone	90.63	14.63	76.88	13.31	1.99 E-20
Mediaeval bone	96.36	29.90	72.18	23.37	1.02 E-17
Pleistocene	96.77	33.68	69.11	15.91	5.2 E-22

391

392 In the TEM observations, collagen fibrils are shown by the characteristic dark and light banding along the length  
 393 (Figure 8). This is due to the highly regulated structure and arrangement of the fibrils within the collagen  
 394 protein (Orgel *et al.*, 2001). However, the HCl-treated modern collagen resulted in fibrils with less uniform fibril  
 395 widths than those treated with EDTA, as well as regions of swelling along the fibril length (Figure 8). In contrast,  
 396 the collagen from the modern bone treated with EDTA resulted in a higher number of fibrils per square on the  
 397 grid than those treated with HCl, with less swelling and a more uniform fibril width (Figure 8). The effect of HCl  
 398 demineralisation was also evident in the Medieval bone. When treated with HCl, the extracted fibrils showed  
 399 less defined structure with areas of swelling and more disruption to the banding than those treated with EDTA  
 400 (Figure 8). The detrimental effect of HCl demineralisation on fibril structure was most evident in Pleistocene  
 401 bone, with very few collagen fibrils displaying the characteristic banding, whereas banding was still evident in  
 402 the majority of the fibrils in the EDTA-demineralised sample.



403

**Figure 7:** Transmission electron micrographs of collagen extracted from modern, Medieval and Pleistocene bone treated with either 0.6 M HCl or 0.5 M EDTA



## 405           Section 4     Discussion

406

### 407   Section 4.1   Spatial variation in deamidation levels within a sample

408   Our findings show that, in the Medieval bovine metatarsal bone investigated here, the sampling location across  
409   areas of well-preserved compact bone does not generally contribute significantly to differences in the level of  
410   deamidation observed. This may be attributable to highly structured and repetitive nature of the protein and  
411   the dense packing of the surrounding mineral. Samples taken from areas of bone that displayed localised  
412   macroscopic diagenesis showed elevated levels of deamidation of some peptides. This may be due to localised  
413   differences in the bone structure in this “darkened” region; for example, bone is less compact and more porous  
414   at sites of muscle attachment than the surrounding bone (Hawkey and Merbs 1995; Mann and Hunt 2013) and  
415   therefore may be more susceptible to diagenetic processes. It should be noted that only one bone was used to  
416   investigate sampling point variability in this study and although the protein structure is conserved throughout  
417   different bone types (e.g. long or flat bones) the level of mineralisation or the effect of structural anatomical  
418   differences on levels of glutamine deamidation has not been investigated. The increased deamidation from  
419   areas of the bone that display localised, macroscopic diagenesis highlights the importance of sampling from  
420   areas that are representative of the overall preservation of the bone, i.e. by avoiding areas that are clearly and  
421   visibly compromised.

### 422   Section 4.2   Effects of sample pre-treatment and extraction methods on glutamine 423                   deamidation and the collagen fibril structure

424   The gentle collagen extraction method developed by van Doorn *et al.* (2011) has the advantages of being fast to  
425   perform and minimally destructive to the bone, as it does not require decalcification pre-treatment. However,  
426   we have found that this extraction does not always yield sufficient amounts of collagen for successful MS  
427   analysis. Extraction using only ammonium bicarbonate solution may result in partial collagen extraction for a  
428   number of reasons. For example, as the buffer-soluble collagen is easily extracted, it is possible that much of it  
429   may be lost due to leaching or exchange within the burial environment, especially in sites with fluctuating water  
430   tables (High *et al.*, 2015). Also, the buffer-soluble fraction is likely to be gelatinised and therefore may not be  
431   truly representative of the general state of preservation of the majority of the mineralised bone collagen.

432   Our results show that demineralisation treatment using HCl influences the extent of deamidation; HCl increases  
433   the level of glutamine deamidation and decreases the number of peptides detected in comparison with EDTA  
434   treatment. Both asparagine and glutamine deamidation have been studied in a range of sample types, from  
435   short synthetic peptides (Geiger and Clarke 1987; Li *et al.*, 2010; Robinson *et al.*, 1970; Robinson 2004; Stratton  
436   *et al.*, 2001) to proteins such as  $\alpha$ -crystallin of the eye lens (Takemoto and Boyle 1998), collagen (Hurtado and  
437   O’Connor 2012; van Doorn *et al.*, 2012; J. Wilson *et al.*, 2012), keratin (Araki and Moini 2011) and protein  
438   binders in paint (Leo *et al.* 2011). Asparagine is known to have two deamidation pathways: either via a cyclic  
439   succinimidyl (five membered ring) intermediate, or via direct side chain hydrolysis (Capasso *et al.*,  
440   1991; Radkiewicz *et al.*, 1996; Xie and Schowen 1999). The latter reaction has been found to be favoured at low  
441   or high pH (Robinson 2004). Glutamine can also deamidate via two pathways (Robinson 2004; Li *et al.*, 2010),



442 forming a cyclic glutimidyl (six membered ring) intermediate. The two residues have different rates of  
443 deamidation via cyclic intermediates, with glutamic acid forming at a slower rate than aspartic acid (Li *et al.*,  
444 2010). The most probable route of deamidation for both residues in a highly structured protein such as collagen  
445 is via direct side chain hydrolysis, due to the lack of flexibility necessary for the protein backbone to adopt the  
446 appropriate interatomic distance needed for the formation of the cyclic intermediates (van Duin and Collins  
447 1998). It is therefore likely that the two residues are equally stable in proteins such as collagen. However once  
448 in solution, gelatine (the soluble form of collagen) no longer has the same rigid structural constraints, and exists  
449 in the form of random coils.

450 We observe increased levels of glutamine in HCl (pH 1) treated samples. This is most likely due to an increase in  
451 direct side chain hydrolysis, which is less likely to occur during the ammonium bicarbonate or EDTA extractions,  
452 both carried out at around pH 8.0 (Robinson 2004). Low pH is known to induce peptide bond hydrolysis (Hill  
453 1965). However, in the experiments presented here the bone was treated in a fairly weak acid solution (0.6 M  
454 HCl) under refrigerated conditions (4-5 °C). It is therefore unlikely that these conditions would significantly  
455 hydrolyse the peptide bonds of the protein. Of the 12 Gln-containing peptides studied here, those that were not  
456 observed in spectra of HCl-treated samples all contained aspartic acid (peptide sequences in Table 1). The  
457 literature has shown that aspartic acid-proline bonds undergo hydrolysis at low pH under conditions where  
458 other aspartyl bonds are found to be stable (Pisskiewicz *et al.*, 1970). In the peptides measured here, the  
459 aspartyl is always to the N-terminal side of Gly; Radkiewicz *et al.* (2001) found that the degradation of aspartyl-  
460 glycine bonds can be promoted due to an increased rate of ring formation, with Asp-Gly having a short half-life  
461 compared to Asp bound to other amino acids (Ser, Ala, Cys and His). The half-life of Asp-Gly degradation at  
462 37 °C, pH 7.4 was found to be 41-71 days, in comparison with 266 days for Asp-His and Asp-Ala. It is possible  
463 that at low pH cyclisation at the aspartyl-glycine occurs, although currently not enough is known about how  
464 these bonds in collagen are affected over time, or at different pH. If the aspartyl-glycine bond is more prone to  
465 breakage than other Asp-amino acid bonds, this may explain the lack of Asp-Gly containing peptides in the  
466 spectra of HCl treated samples. However, from these experiments we have no direct supporting evidence of  
467 preferential breakage at the aspartyl-glycine bond.

468 Low pH has been found to emphasise areas of damage in cooked collagen, as it induces observable swelling at  
469 sites of damage (Koon *et al.*, 2010). The TEM findings presented in this paper support the theory that HCl  
470 treatment of bone causes degradation of the collagen structure and that older bone may be more susceptible to  
471 pH-induced damage. Greater knowledge of the contribution of the 3D structure to the stability of residues at  
472 specific sites would help further understanding of the breakdown pathways of bone collagen, as well as of the  
473 observed differences in deamidation rates for different Gln-containing peptides.

## 474 **Section 5 Conclusions**

475 We have explored two potential causes of variation in Gln deamidation determined in bovid bone. This study  
476 found that for some peptides, levels of deamidation were reproducible across the length of areas of  
477 macroscopically well-preserved bone. Given that sample point variation was investigated in only one bone, the  
478 results obtained here are preliminary. In order to fully understand the possibility of sample point variation, a

479 wider study of multiple bone types would be necessary. Our results suggest that the level of glutamine  
480 deamidation is linked to the preservation state of collagen in bone, with macroscopically degraded sections  
481 resulting in increased levels of deamidation. Measurement of glutamine deamidation may therefore be a useful  
482 screening tool when selecting bone material for collagen-dependent analysis.

483 When looking to extract collagen, especially from old or poorly preserved bone, it appears that EDTA-treatment  
484 is preferable to HCl-treatment. We conclude that, although acid demineralisation has been shown to be suitable  
485 for other types of collagen analyses (e.g. for radiocarbon dating, or dietary studies (Sealy *et al.*, 2014)), this pre-  
486 treatment method clearly disrupts the collagen structure and causes some damage to the protein structure.  
487 EDTA demineralisation is preferable for mass spectrometric analyses aimed at quantifying the extent of  
488 glutamine deamidation in samples where ammonium bicarbonate extraction is unsuccessful, or in particularly  
489 degraded or old samples.

490 In the 12 peptides considered here, some appeared to be more stable than others and underwent deamidation  
491 more slowly, similar to the observation of van Doorn *et al.* (2012) and Wilson *et al.* (2012), who calculated  
492 different half-lives for glutamine in different peptides. We suggest that these stable peptides may be particularly  
493 useful when evaluating the preservation state of Pleistocene bone material. On the other hand, rapidly-  
494 deamidating peptides may be most suited to determination of the extent of diagenesis in younger (Holocene  
495 and/or Late Pleistocene) bones. In order to further investigate the relationship between thermal age and  
496 glutamine deamidation, a number of bones from dated sites are currently being analysed which should help  
497 answer this question.

498 This technique could be used as a low cost method to identify bones with good collagen preservation prior to  
499 subsequent destructive analyses, such as radiocarbon dating or DNA analysis. Using this technique to map  
500 preservation across a single bone could help clarify how protein in a bone degrades over time. Understanding  
501 the effects of bone pre-treatment methods on the collagen structure could aid the success of species  
502 identification by peptide mass fingerprinting, helping to optimise the recovery of species-specific collagen  
503 peptides. Finally we feel that measurements of glutamine deamidation may offer a new way of quantifying and  
504 visually mapping the preservation of protein within bone.

505

## 506 **Acknowledgements**

507 We would like to thank the following: Mathias Stiller (Planck Institute for Evolutionary Anthropology), Duane  
508 Froese (University of Alberta) and Grant Zazula (Yukon Government) for providing us with Pleistocene bone  
509 material, Colin Smith (La Trobe University) for providing and preparing the modern bone reference sample,  
510 NERC for providing the funding for this PhD research, Adam Dowle (Technology Facility, University of York) and  
511 Ed Bergström and Sheila Taylor (Department of Chemistry, University of York) for their continuing technical  
512 support and advice. We gratefully acknowledge use of the ultraflex instrument in the York Centre of Excellence  
513 in Mass Spectrometry, which was created thanks to a major capital investment through Science City York,  
514 supported by Yorkshire Forward with funds from the Northern Way Initiative. Funding for collecting Pleistocene

515 bones was provided by the Gordon and Betty Moore Foundation and we thank the Leverhulme Trust for  
516 additional support.

517

518

## 519 References

- 520 (1) Ambrose, S.H. and Norr, L., (1993). Experimental Evidence for the Relationship of the Carbon Isotope Ratios of Whole Diet and Dietary  
521 Protein to Those of Bone Collagen and Carbonate. *Prehistoric Human Bone*, 1–37.
- 522 (2) Araki, N. and Moini, M., (2011). Age estimation of museum wool textiles from *Ovis aries* using deamidation rates utilizing matrix-assisted  
523 laser desorption/ionization time-of-flight mass spectrometry. *Rapid Communications in Mass Spectrometry*, **25**(22): 3396–400.
- 524 (3) Bada, J.L. and Helfman, P.M., (1975). Amino acid racemization dating of fossil bones. *World Archaeology*, **7**(2): 160–73.
- 525 (4) Brock, F., Higham, T. and Ramsey, C.B., (2010). Pre-screening techniques for identification of samples suitable for radiocarbon dating of  
526 poorly preserved bones. *Journal of Archaeological Science*, **37**(4): 855–865
- 527 (5) Brock, F., Ramsey, C. and Higham, T., (2007). Quality assurance of ultrafiltered bone dating. *Radiocarbon*, **49**(2): 187–192.
- 528 (6) Buckley, M. *et al.*, (2009). Species identification by analysis of bone collagen using matrix-assisted laser desorption / ionisation time-of-  
529 flight mass spectrometry. *Rapid Communications in Mass Spectrometry*, **23**: 3843–3854.
- 530 (7) Buckley, M. and Collins, M.J., (2011). Collagen survival and its use for species identification in Holocene-lower Pleistocene bone  
531 fragments from British archaeological and paleontological sites. *Antiqua*, **1**(1): 1–7.
- 532 (8) Capasso, S. *et al.*, (1991). First Evidence of Spontaneous Deamidation of Glutamine Residue via Cyclic Imide to  $\alpha$ - and  $\gamma$ -Glutamic Residue  
533 Under Physiological Conditions. *Journal of the Chemical Society, Chemical Communications.*, **23**: 1667–1668.
- 534 (9) Collins, M.J. *et al.*, (1995). A Basic Mathematical Simulation of the Chemical Degradation of Ancient Collagen. *Journal of Archaeological*  
535 *Science*, **22**(2): 175–183.
- 536 (10) Covington, A.D. *et al.*, (2010). Link-lock: the mechanism of stabilising collagen by chemical reactions. *World Leather*, **25**(5): 35–43.
- 537 (11) Dobberstein, R.C. *et al.*, (2009). Archaeological collagen: Why worry about collagen diagenesis? *Archaeological and Anthropological*  
538 *Sciences*, **1**(1): 31–42.
- 539 (12) Van Doorn, N.L. *et al.*, (2012). Site-specific deamidation of glutamine: a new marker of bone collagen deterioration. *Rapid*  
540 *Communications in Mass Spectrometry*, **26**(19): 2319–27.
- 541 (13) Van Doorn, N.L., Hollund, H. and Collins, M.J., (2011). A novel and non-destructive approach for ZooMS analysis: Ammonium  
542 bicarbonate buffer extraction. *Archaeological and Anthropological Sciences*, **3**(3): 281–289.
- 543 (14) Van Duin, A.C.T. and Collins, M.J., (1998). The effects of conformational constraints on aspartic acid racemization. *Organic*  
544 *Geochemistry*, **29**(5): 1227–1232.
- 545 (15) Geiger, T. and Clarke, S., (1987). Deamidation, isomerization, and racemization at asparaginyl and aspartyl residues in peptides.  
546 Succinimide-linked reactions that contribute to protein degradation. *Journal of Biological Chemistry*, **262**(2): 785.
- 547 (16) Hawkey, D.E. and Merbs, C.F., (1995). Activity-induced Musculoskeletal Stress Markers (MSM) and Subsistence Strategy Changes  
548 among Ancient Hudson Bay Eskimos. *International Journal of Osteoarchaeology*, 324 – 338.
- 549 (17) High, K. *et al.*, (2015). Appetite for destruction: investigating bone degradation due to high acidity at Star Carr. *Journal of Archaeological*  
550 *Science*, **59**: 159–168
- 551 (18) Hurtado, P.P. and O'Connor, P.B., (2012). Deamidation of collagen. *Analytical chemistry*, **84**(6): 3017–25.
- 552 (19) Jonsson, R., Tarkowski, A. and Klareskog, L., (1986). A demineralization procedure for immunohistopathological use EDTA treatment  
553 preserves lymphoid cell surface antigens. *Journal of Immunological Methods*, **88**: 109–114.
- 554 (20) Koon, H. *et al.* (2012). Identification of Cooked Bone Using TEM Imaging of Bone Collagen. *Forensic Microscopy for Skeletal Tissues*, **915**:  
555 249–261.
- 556 (21) Koon, H.E.C., O'Connor, T.P. and Collins, M.J., (2010). Sorting the butchered from the boiled. *Journal of Archaeological Science*, **37**(1):  
557 62–69.

- 558 (22) Leo, G. *et al.*, (2011). Deamidation at Asparagine and Glutamine As a Major Modification upon Deterioration/Aging of Proteinaceous  
559 Binders in Mural Paintings. *Analytical Chemistry*, 2056–2064.
- 560 (23) Li, X., Lin, C. and O'Connor, P.B., (2010). Glutamine deamidation: differentiation of glutamic acid and  $\gamma$ -glutamic acid in peptides by  
561 electron capture dissociation. *Analytical Chemistry*, **82**(9): 3606–15.
- 562 (24) Libby, W., (1960). Radiocarbon dating. Nobel lecture.
- 563 (25) Mann, R.W. and Hunt, D.R., (2013). Photographic regional atlas of bone disease: A guide to pathologic and normal variation in the  
564 human skeleton, Charles C Thomas Publisher.
- 565 (26) Marom, A. *et al.*, (2012). Single amino acid radiocarbon dating of Upper Paleolithic modern humans. *Pnas*, **109**(18): 1–4.
- 566 (27) McCullagh, J.S.O., Marom, A. and Hedges, R.E.M., (2010). Radiocarbon dating of individual amino acids from archaeological bone  
567 collagen. *Radiocarbon*, **52**(2): 620–634.
- 568 (28) O'Connor, T., (2000). The archaeology of animal bones, Sutton Publishing Limited.
- 569 (29) Orgel, J., Miller, A. and Irving, T., (2001). The in situ supermolecular structure of type I collagen. *Structure*, **9**(01): 1061–1069.
- 570 (30) Pisskiewicz, D., Landon, M. and Smith, E.L., (1970). ANOMALOUS CLEAVAGE OF ASPARTYL-PROLINE PEPTIDE BONDS DURING AMINO  
571 ACID SEQUENCE DETERMINATIONS. *BIOCHEMICAL AND BIOPHYSICAL RESEARCH COMMUNICATIONS*, **40**(5): 1173–1178.
- 572 (31) Van der Plicht, J. and Palstra, S.W.L., (2014). Radiocarbon and mammoth bones: What's in a date. *Quaternary International*, 1–6.
- 573 (32) Radkiewicz, J.L. *et al.*, (1996). Accelerated Racemization of Aspartic Acid and Asparagine Residues via Succinimide Intermediates: An ab  
574 Initio Theoretical Exploration of Mechanism. *Journal of the American Chemical Society*, **118**(38): 9148–9155.
- 575 (33) Radkiewicz, J.L. *et al.*, (2001). Neighboring Side Chain Effects on Asparaginyl and Aspartyl Degradation : An Ab Initio Study of the  
576 Relationship between Peptide Conformation and Backbone NH Acidity. *Journal of the American Chemical Society*, **124**: 3499–3506.
- 577 (34) Ramsey, C. and Higham, T., (2007). Improvements to the pretreatment of bone at Oxford. *Radiocarbon*, **46**(1): 155–163.
- 578 (35) Reimer, P., Bard, E. and Bayliss, A., (2013). IntCal13 and Marine13 radiocarbon age calibration curves 0–50,000 years cal BP.  
579 *Radiocarbon*, **55**(4): 1869–1877.
- 580 (36) Rich, A. and Crick, F.H.C., (1961). The molecular structure of collagen. *Journal of Molecular Biology*, **3**(5): 483–506.
- 581 (37) Robinson, (2004). Molecular clocks: Deamidation of asparaginyl and glutaminyl residues in peptides and proteins. In *Peptides*. Althouse  
582 press, cave junction, : 1–11.
- 583 (38) Robinson, A.B., McKerrow, J.H. and Cary, P., (1970). Controlled deamidation of peptides and proteins: an experimental hazard and a  
584 possible biological timer. *Proceedings of the National Academy of Sciences of the United States of America*, **66**(3): 753–7.
- 585 (39) Shoulders, M. D. and Raines, R.T., (2009). Collagen structure and stability. *Annual Review of Biochemistry*, **78**: 929–58.
- 586 (40) Smith, C.I. *et al.*, (2005). Diagenesis and survival of osteocalcin in archaeological bone. *Journal of Archaeological Science*, **32**(1): 105–  
587 113.
- 588 (41) Smith, C.I. *et al.*, (2003). The thermal history of human fossils and the likelihood of successful DNA amplification. *Journal of Human  
589 Evolution*, **45**(3): 203–217.
- 590 (42) Snedecor, G.W., (1934). Calculation and interpretation of analysis of variance and covariance,
- 591 (43) Stratton, L.P. *et al.*, (2001). Controlling deamidation rates in a model peptide: effects of temperature, peptide concentration, and  
592 additives. *Journal of Pharmaceutical Sciences*, **90**(12): 2141
- 593 (44) Takemoto, L. and Boyle, D., (1998). Deamidation of specific glutamine residues from alpha-A crystallin during aging of the human lens.  
594 *Biochemistry*, **37**(39): 13681–5.
- 595 (45) Turner-Walker, G., (2008). The Chemical and Microbial Degradation of Bones and Teeth. *Advances in Human Palaeopathology*.
- 596 (46) Tuross, N., (2012). Comparative decalcification methods, radiocarbon dates, and stable isotopes of the VIRI bones. *Radiocarbon*, **54**(3):  
597 837–844.
- 598 (47) Viguet-Carrin, S., Garnero, P. and Delmas, P.D., (2006). The role of collagen in bone strength. *Osteoporosis International*, **17**(3): 319–36.
- 599 (48) Welker, F. *et al.*, (2015). Ancient proteins resolve the evolutionary history of Darwin's South American ungulates. *Nature*.
- 600 (49) Westgate, J.A. *et al.*, (2008) Changing ideas on the identity and stratigraphic significance of the Sheep Creek tephra beds in Alaska and  
601 the Yukon Territory, north-western North America. *Quaternary International*, **178**(1): 183–209

- 602 (50) Whitford, D., (2008). proteins, structure and function. In John Wiley and Sons Ltd, 92–101.
- 603 (51) Wilson, J., van Doorn, N.L. and Collins, M.J., (2012). Assessing the extent of bone degradation using glutamine deamidation in collagen.  
604 *Analytical Chemistry*, **84**(21): 9041–8.
- 605 (52) Xie, M. and Schowen, R.L., (1999). Secondary structure and protein deamidation. *Journal of Pharmaceutical Sciences*, **88**(1): 8–13.
- 606
- 607
- 608
- 609