



UNIVERSITY OF LEEDS

This is a repository copy of *Illite occurrences related to volcanic-hosted hydrothermal mineralization in the biga peninsula, NW Turkey: Implications for the age and origin of fluids*.

White Rose Research Online URL for this paper:
<http://eprints.whiterose.ac.uk/94336/>

Version: Accepted Version

Article:

Bozkaya, O, Bozkaya, G, Uysal, T et al. (1 more author) (2016) Illite occurrences related to volcanic-hosted hydrothermal mineralization in the biga peninsula, NW Turkey: Implications for the age and origin of fluids. *Ore Geology Reviews*, 76. pp. 35-51. ISSN 0169-1368

<https://doi.org/10.1016/j.oregeorev.2016.01.001>

© 2016. This manuscript version is made available under the CC-BY-NC-ND 4.0 license
<http://creativecommons.org/licenses/by-nc-nd/4.0/>

Reuse

Unless indicated otherwise, fulltext items are protected by copyright with all rights reserved. The copyright exception in section 29 of the Copyright, Designs and Patents Act 1988 allows the making of a single copy solely for the purpose of non-commercial research or private study within the limits of fair dealing. The publisher or other rights-holder may allow further reproduction and re-use of this version - refer to the White Rose Research Online record for this item. Where records identify the publisher as the copyright holder, users can verify any specific terms of use on the publisher's website.

Takedown

If you consider content in White Rose Research Online to be in breach of UK law, please notify us by emailing eprints@whiterose.ac.uk including the URL of the record and the reason for the withdrawal request.



eprints@whiterose.ac.uk
<https://eprints.whiterose.ac.uk/>

Accepted Manuscript

Illite occurrences related to volcanic-hosted hydrothermal mineralization in the biga peninsula, NW Turkey: Implications for the age and origin of fluids

Ömer Bozkaya, Gülcan Bozkaya, I. Tonguç Uysal, David A. Banks

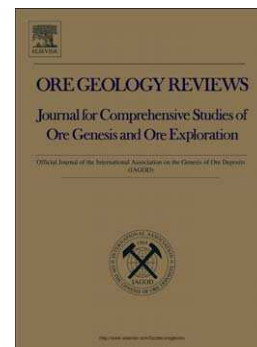
PII: S0169-1368(15)30094-9
DOI: doi: [10.1016/j.oregeorev.2016.01.001](https://doi.org/10.1016/j.oregeorev.2016.01.001)
Reference: OREGEO 1716

To appear in: *Ore Geology Reviews*

Received date: 1 October 2015
Revised date: 2 January 2016
Accepted date: 5 January 2016

Please cite this article as: Bozkaya, Ömer, Bozkaya, Gülcan, Tonguç Uysal, I., Banks, David A., Illite occurrences related to volcanic-hosted hydrothermal mineralization in the biga peninsula, NW Turkey: Implications for the age and origin of fluids, *Ore Geology Reviews* (2016), doi: [10.1016/j.oregeorev.2016.01.001](https://doi.org/10.1016/j.oregeorev.2016.01.001)

This is a PDF file of an unedited manuscript that has been accepted for publication. As a service to our customers we are providing this early version of the manuscript. The manuscript will undergo copyediting, typesetting, and review of the resulting proof before it is published in its final form. Please note that during the production process errors may be discovered which could affect the content, and all legal disclaimers that apply to the journal pertain.



Illite occurrences related to volcanic-hosted hydrothermal mineralization in the Biga Peninsula, NW Turkey: implications for the age and origin of fluids

Ömer Bozkaya ^a, Gülcan Bozkaya ^a, I. Tonguç Uysal ^{b,c}, David A. Banks ^d

^aPamukkale University, Department of Geological Engineering, 20070 Denizli, Turkey

^bHacettepe University, Department of Geological Engineering, 06800 Ankara, Turkey

^cQueensland Geothermal Energy Centre of Excellence, The University of Queensland, Queensland 4072, Australia

^dSchool of Earth and Environment, University of Leeds, Woodhouse Lane, Leeds LS2 9JT, United Kingdom

ABSTRACT

A different approach to investigate the origin of fluids, temperature conditions, age of hydrothermal activity of mineralization in the Biga Peninsula, (Koru, Tesbihdere and Kumarlar) employed mineralogical (illite Kübler index, b cell dimension, polytype) and geochemical (major, trace/REE, O-H stable isotope and Rb/Sr dating) methods. The Kübler Index (KI) values of illites indicate different temperature conditions, such as low temperature (high-grade diagenesis) for Koru deposit, and high temperature (anchizone) for the Tesbihdere and Kumarlar deposits. The textural, mineralogical and geochemical data from illites show that these have potential for estimating the age of hydrothermal activity and fluid characteristics. Both mineralogical (high grade diagenetic to anchizone KI, 1M polytype, low d_{060} values) and geochemical (similar major and trace element composition to host-rocks, low octahedral Mg+Fe contents, oxygen and hydrogen isotope composition) data are compatible with commonly known hydrothermal illites. Stable isotope data of illites are well matched to similar data from fluid inclusions, which indicate mainly magmatic fluids. The Rb/Sr age (22.4 ± 2.3 Ma: latest Oligocene and lowest Miocene) of the illites coincides with plutonic

intrusions that are the main instigators of hydrothermal activities related to the extensional tectonic regime in the Biga Peninsula. The mineralogical and geochemical data of illites have some important advantages with respect to the use of fluid inclusions in determining δD of hydrothermal fluids thereby leading to better understanding ore-forming hydrothermal conditions.

Keywords: Base metal deposit, hydrothermal alteration, clay mineralogy and geochemistry, Biga Peninsula, Turkey

1. Introduction

For many years constraining fluid compositions and temperatures of hydrothermal ore deposits has relied on fluid inclusion studies of quartz, or other gangue minerals, associated with the deposition of the ore minerals in only a few of which can inclusions be directly observed, ie sphalerite (see Roedder, 1984 for a compilation of the use of fluid inclusions). The origin and evolution of ore-forming fluids is commonly inferred from a combination of oxygen isotopes in quartz and the hydrogen isotopic composition of fluids trapped within gangue or ore minerals (Campbell and Larson, 1988). As these are bulk techniques the data's validity, requires there to be only a single generation of inclusions or quartz both of which represent the ore forming process. However, this is frequently not the case and analyses are used where there are different generations of fluid that may be of a different origin. The results are therefore an average of the different populations sampled. In cases such as epithermal or porphyry mineralization, fluids with different P-T-X characteristics can be identified by microthermometry with the different fluids being a mixture of magmatic and the local meteoric water. The analyses plot on δD vs $\delta^{18}O$ diagrams somewhere between the magmatic water box and the meteoric water line, depending either on the degree of mixing of

the fluids or the proportion of magmatic and later meteoric inclusions that are contained in the samples. However, these can still be valid in assigning the source of the fluids. In many cases, however, the fluid system is not so simple and the analyses from mixed fluid populations cannot be easily deciphered. An alternative, or addition, to the use of fluid inclusions is to determine the δD and $\delta^{18}O$ of clay/phylosilicate minerals, which form as hydrothermal alteration products (e.g., Bechtel and Hoernes, 1990; Uysal et al., 2001; Golding et al., 2006; Middleton et al., 2014, 2015). These can be more reliable and directly links the fluid to an effect, i.e., alteration and production of new mineral phases.

In hydrothermal systems, the factors controlling clay formation (kaolinization, illitization and/or sericitization) processes (temperature, time, fluid composition, fluid/rock ratio) may differ from those of burial diagenesis. Time has a negligible effect because the formation generally occurs during a short period (or short-lived geothermal systems; Jennings and Thompson, 1986; Ramseyer and Boles, 1986) and probably during a single event (Bauluz et al., 2002; Bauluz, 2007). The effect of fluid composition and the fluid/rock ratio on clay formation in hydrothermal environments is more significant (e.g., Whitney, 1990; Buatier et al., 1992; Harvey and Browne, 1992; Inoue and Kitagawa, 1994, Inoue, 1995), and the crystallinity of clay minerals is largely controlled by fluid temperature (Browne and Ellis, 1970; Duba and William-Jones, 1983; Hedenquist and Browne, 1989; Ji and Browne, 2000; Zhangdong et al., 2001, 2002; Fukuchi et al., 2014). If clay minerals precipitated in equilibrium with the fluid (without any kinetic isotope fractionation) the H- and O- isotope composition of the clays can be used to infer the fluid isotope composition (if the fluid temperature is known) or temperature (if the fluid isotopic composition is known). Radiometric dating of illitic clay minerals also provides information on the timing of the hydrothermal activity (e.g., Zwingmann et al., 1999; Uysal et al., 2001; Uysal et al., 2011; Middleton et al., 2014). The advantage of using illite is its higher stability in relatively high

temperature environments (Velde and Vasseur, 1992; Pollastro, 1993), compared to the other, more easily, weathered clay minerals, such as chlorite, kaolinite and mixed-layer illite-smectite. Illite that formed in hydrothermal alteration environments and was not affected by later fluid flow and thermal events remain stable, even at the conditions of porphyry copper mineralization (Zhangdong et al., 2001, 2002), therefore it can be used to understand the formation conditions, fluid source and water/rock ratio (e.g., Whitney, 1990; Inoue and Kitagawa, 1994).

In this study, our objective was to investigate hydrothermal illites in terms of the thermal conditions and origin of hydrothermal fluids as well as age of alteration, and to correlate this with fluid inclusion data. Thus, we test the possible advantages of mineralogical (clay assemblages, Kübler Index-KI, polytype and b cell dimension of illites) and geochemical (major, trace elements, stable and radiogenic isotopes) data from illites that may elucidate the physico-chemical characteristics of hydrothermal systems from a different perspective.

2. Geological Framework

The deposits studied (Koru, Tesbihdere-Sahinli and Kumarlar) are aligned NW-SE, and located in the Lapseki and Çan districts of the Biga Peninsula, NW Turkey (Fig. 1a, b). Their general characteristics are comparable with low to intermediate sulphidation volcanic-hosted epithermal base-metal-Au deposits. The Biga Peninsula is part of the Tethyan Eurasian Metallogenic Belt (Fig. 1a, Jankovic, 1986; Yigit, 2012) and has a complicated geologic and tectonic history due to the collision of the different continental fragments and their amalgamation resulting from the convergence between the Anatolide-Tauride platform (Gondwana) and the Pontides (Laurasia). The Pre-Cenozoic rocks of the Biga Peninsula are sub-divided into three zones from the northwest to southeast: (1) the Ezine zone, Permian

meta-sedimentary and Permo-Triassic ophiolitic rocks, (2) the Ayvacık-Karabiga zone, eclogite-bearing ophiolitic mélangé and Late Triassic limestone blocks and (3) the Sakarya zone, Permian metamorphic rocks of the Kazdağ Group and Permo-Triassic sedimentary and magmatic rocks of the Karakaya Complex (Fig. 1b; Okay et al., 1990; 1991). The ophiolitic rocks are represented by a Cretaceous ophiolitic melange, consisting of partly serpentinized harzburgites (Okay et al., 1990). Tertiary to Miocene volcanism covers extensive areas and hosts numerous important metallic and industrial deposits in the Biga Peninsula (e.g., Yigit, 2009, Fig. 1b). The Tertiary volcanism started in the Eocene with andesitic lava, tuff and agglomerate with a medium-K calc-alkaline character (Baliklicesme volcanics or Akcaalan volcanics) and continued through the Oligocene with andesite, trachyandesite, dacite, rhyodacite, rhyolite lava, tuff and agglomerate with a high-K calc-alkaline character (Can volcanics or Adadagi pyroclastics). Early Miocene volcanism is characterized by andesite, dacite, rhyodacite (Behram volcanics or Dededagi dacite), followed by alkaline olivine basaltic lava (Ezine basalt) in the Late Miocene (Yilmaz, 1990; Ercan et al., 1995, 1998; Yilmaz et al., 2001). The three units were defined by Ercan et al. (1995), Siyako et al. (1989) and Bozkaya (2001): Baliklicesme volcanics, Can volcanics, Behram volcanics and Ezine basalt were taken from Ercan et al. (1995), Akcaalan volcanics from Siyako et al. (1989), Adadagi pyroclastics, Dededagi dacite and Karaomerler basalt from Bozkaya (2001). Plutonic rocks (granite, syenite, granodiorite, quartz monzonite, quartz monzodiorite) appeared in the Late Cretaceous and continued through the Eocene, Oligocene and into the early Miocene (Birkle and Satir, 1995; Yilmaz et al., 2001). The radiometric ages of volcanic rocks in the region are mainly from K/Ar (Ercan et al., 1995; Aldanmaz et al., 2000) and some Ar/Ar dating (Ece et al., 2008) from different areas dispersed between Gökçeada to Edremit (Fig. 1b). The Oligocene and Miocene volcanics cannot be distinguished in the map (Fig. 1b), as detailed maps (1:25.000) do not exist at present for volcanic rocks in the Peninsula.

The three deposits are similar to each other in terms of their style of mineralization with veins at depth and disseminations and stockworks in the upper parts. The host-rocks are Oligocene pyroclastics and the ore (galena, sphalerite) and gangue minerals (quartz, barite) are common to all deposits. The pyroclastic rocks, agglomerates, breccias, lapillistones and tuffs, are found in the Tahtalikuyu sector of the Koru area (Fig. 2). Greenish colored agglomerates and lapillistones with andesite interlayers are located in the lower part, yellowish gray colored highly silicified rhyolitic breccias in the middle with silicified rhyolitic tuffs towards the top (Bozkaya and Gokce, 2001; 2009). According to the distribution of the pyroclastic rocks, the Tesbihdere and Kumarlar areas are more representative of deeper parts, whereas those of the Koru area are more representative of the upper parts of the volcanic-volcanogenic succession. Such upper level rhyolitic breccias and tuffs were described as volcanic cones by Yanagiya and Sato (1989) and Bozkaya (2001). The ore veins are typically surrounded by a silicified, argillic-sericitic alteration zone up to tens of meters in width.

3. Analytical Methods

A total of 25 hydrothermally altered volcanic and volcanoclastic rock samples were selected from hundreds of samples collected from the argillic zones of the three volcanic-hosted vein type of Pb-Zn deposits (Koru, Tesbihdere and Kumarlar) and analysed by optical and electron microscopy, X-ray diffraction (XRD) and geochemistry, major, trace, stable and radiometric isotopes: O, H, Rb/Sr. The ore mineralogy and fluid inclusion characteristics of these deposits were previously studied by Bozkaya and Gokce (2001; 2009); Bozkaya and Celik (2010) and Bozkaya et al. (2014).

Electron microscope investigations were undertaken on gold-coated samples using a Carl Zeiss Supra 40 VP Field Emission Scanning Electron Microscope (FE-SEM) at

Pamukkale University (Denizli, Turkey).

XRD analyses were undertaken with a Rigaku diffractometer (DMAX IIC) in the Cumhuriyet University (Sivas, Turkey) with the following settings: Cu-K α , 35 kV, 15 mA, slits (divergence = 1°, scatter = 1°, receiving = 0.15 mm, receiving-monochromator = 0.30 mm), scan speed 1°2 θ /min. Clay fractions (<2 μ m) were separated by the sedimentation method and analysed under normal (air-dried at 25°C), ethylene glycolated EG (in a desiccator at 60°C for 16 h) and heat (490°C for 4 h) conditions. Fine grained fractions (2-1 μ m, 1-0.5 μ m, <0.5 μ m) were separated by centrifuge.

The half-height width of 10 Å illite peaks (Kübler Index-KI, Kübler, 1968) were calibrated by Crystallinity Index Standards (CIS, Warr and Rice, 1994). All KI values are given as recalculated CIS values. Illite/K-white mica $d_{060,331}$ were measured by calibrating against the (211) peak of quartz ($2\theta = 59.982^\circ$, $d = 1.541$ Å) as an internal standard. Only pure and nearly pure illites were used for $d_{060,331}$ determinations. The equation of Guidotti et al., 1992 was used for the estimation of octahedral Fe+Mg against $d_{060,331}$ values of illite.

The contents of swelling smectite layers (smectite) in illites and ordering type (Reichweite = R, Jagodzinski, 1949; Reynolds, 1980) of I-S were determined following the XRD methods of Moore and Reynolds (1997). NEWMOD (Reynolds, 1985) and WINFIT (Krumm, 1996) programs were also applied for precise interpretation of mixed-layer clay minerals. Mean crystallite sizes and contents of swelling (smectitic) layers in illites were estimated using the NEWMOD-based graphs (KI vs. Ir; Intensity Ratio of Środoń, 1984) calculated by Eberl and Velde (1989).

Illite polytypes for randomly oriented pure illite samples have been distinguished with the diagnostic peaks suggested by Bailey (1988). To determine the 2M₁ and 1M and 1M_d % contents of illite/muscovites, the ratios of (2.80 Å)/(2.58 Å) and (3.07 Å)/(2.58 Å) peak areas for 2M₁ and 1M respectively were used, as proposed by Grathoff and Moore (1996). WINFIT

decomposition by profile fitting was used for determination of areas of the specific peaks of polytypes.

For major oxide element analysis, two bulk volcanic rocks and five pure illite samples were analysed using Rigaku 3270 and Spectro Xepos III model x-ray fluorescence (XRF) spectrometers, at the Cumhuriyet University (Sivas) and Pamukkale University (Denizli, Turkey) respectively. The estimated precision and accuracy of the geochemical analyses are $\pm 2\%$ for major oxides. Loss on ignition (LOI) of samples, after drying for 16h at 110°C , corresponds to the total of water and volatiles as a wt.% after heating at 1000°C .

For trace element analysis, clay samples were dissolved with a mixture of HF and nitric acids on a hotplate, then evaporated to dryness, refluxed twice with nitric acid and dissolved in 2N nitric acid. Aliquots of the solutions were spiked with internal standards, diluted and analysed on a Thermo X-series 1 quadrupole inductively coupled plasma mass spectrometer (ICP-MS) in the Radiogenic Isotope Laboratory at the University of Queensland (RIF, UQ). Sample preparation and analytical procedures used were similar to those of Eggins et al. (1997), except that Tm was not used as an internal standard and duplicate low-pressure digestions of W-2, US Geological Survey diabase standard, were used as the calibration standard. BIR-1, AGV1, AGV2 and G2 were run as unknown. The $^{156}\text{CeO}/^{140}\text{Ce}$ ratio for the run was 0.016. Long-term precision (RSD) was based on duplicate analyses of the duplicate digestions of AGV1, whilst precision for the run was based on five duplicate analyses of W-2 which were better than 3% for most elements, except for Li, Zn, Mo, Cd, and Cs, which ranged between 5% (Li, Cd and Cs) and 15% (Zn).

For stable isotope analysis, oxygen was extracted from sample powders using a CO_2 -laser and BrF_5 (Sharp, 1990). Samples and standards were heated overnight to 150°C prior to loading into the vacuum extraction line. These were evacuated for approximately 6 hours. Blank BrF_5 runs were repeated until the yield was less than 0.2μ moles oxygen. Oxygen

yields were recorded and the CO₂ gas analysed with a GEO20-20 Mass Spectrometer. Oxygen isotope values are reported in the standard $\delta^{18}\text{O}$ notation, relative to V-SMOW after normalization to the international quartz standard NBS-28 using a value of +9.6 per mil (‰). Values for four NBS-28 standards, analysed with the samples, had values that varied by less than 0.15 ‰. Hydrogen isotope analyses were conducted on a HEKAtech high temperature elemental analyser coupled with a GV Instruments IsoPrime mass spectrometer. Samples were pyrolyzed at 1450°C, in silver capsules. All samples were analysed in triplicate and the results are reported with respect to V-SMOW, normalized to the international standards IAEA-CH-7, NBS30 and NBS22 with reported δD values of -100 ‰, -66‰ and -118‰. The external precision for these measurements is better than 2‰.

For the Rb–Sr dating, illitic clay separates of different size fractions analyzed in two separate batches. First batch were spiked with ^{85}Rb – ^{84}Sr mixed tracer and dissolved in a mixture of distilled HF and HNO₃, whilst the second batch were measured directly by Thermo X-series 1 quadrupole ICP–MS with precision better than 0.5% (1 σ). The Sr-enriched fraction was separated using cation exchange resins. Sr isotopic ratios were measured on a VG Sector-54 thermal ionisation mass spectrometer (TIMS) in the Radiogenic Isotope Laboratory at University of Queensland. Sr was loaded in TaF₅ and 0.1 N H₃PO₄ on a tantalum or tungsten single filament. Sr isotopic ratios were corrected for mass discrimination using $^{86}\text{Sr}/^{88}\text{Sr} = 0.1194$. Long-term (6 years) reproducibility of statically measured NBS SRM 987 (2 σ ; n = 442) is 0.710249 ± 28 . More recent dynamically measured SRM 987 had $^{86}\text{Sr}/^{88}\text{Sr}$ ratios of 0.710222 ± 20 (2 σ ; n = 140). Rb–Sr isochron ages were calculated using the ISOPLOT program (Ludwig, 2003).

4. Petrography

4.1. Optical Microscopy

Eocene andesites show mostly hypocrySTALLINE, hypohyaline and scarce amygdaloidal textures and contain plagioclase, biotite and hornblende as phenocrysts within a matrix composed of volcanic glass and fine-grained plagioclase microlites. Hydrothermal processes and subsequent weathering effects gave rise to some alterations and newly formed minerals. In order of abundance, argillization, silicification, iron-oxidization and chloritization were developed within the volcanic glassy mass. In addition to these, argillization, sericitization and chloritization of plagioclase, opacitization and chloritization of hornblende and biotite also occurred.

Oligocene pyroclastic rocks have typical vitroclastic textures, and contain volcanic glass and pumice, volcanogenic plagioclase, sanidine, corroded quartz, biotite and volcanic rock fragments. No detrital components were found in the studied samples. Argillization, sericitization and chloritization were developed within the volcanic glass and pores of the pumice (Bozkaya, 2001). Pyroclastic rocks are mainly represented by agglomerate, lapillistone and tuff with andesite intercalations at the lower parts, silicified rhyolitic breccia at middle parts and silicified rhyolitic tuffs in the upper parts of the sequence. Fine-grained (< 2mm) pyroclastic rocks (ash tuffs) were classified as mostly glassy tuff and partly lithic and crystal tuffs based on the Schmid (1981) classification (e.g., Bozkaya et al., 2014).

Hydrothermal alteration resulted in silicification (quartz, chalcedony), argillization (kaolinite, illite, I-S and smectite) and Fe-(oxyhydroxide)oxidation (Fig. 3a, d, f). Silicification is the most intense type of alteration and developed from the devitrification of volcanic glass and coarse-grained chalcedonic quartz replacement of feldspars in the silicified vitric tuffs. Pure illite-bearing samples have intense sericitization as fine-grained scaly micaceous occurrences within the volcanogenic matrix (Fig. 3c, e, g, h). Kaolinites have developed as

white to gray-colored radial crystals completely covering (Fig. 3b) kaolinite-rich samples, or ellipsoidal pore filling aggregates within the sericitized glassy matrix (Fig. 3g) in kaolinite-poor samples.

4.2. Scanning Electron Microscopy

SEM investigations were undertaken on samples from the argillic zones of the deposits, which contain illite, I-S and kaolinite, as hydrothermal clay minerals (Fig. 4a-f). Illite and I-S (R3) occurrences in relatively low-grade ($\sim 150^{\circ}\text{C}$) and/or high grade diagenesis, indicated by fluid inclusion and KI ($\Delta^{\circ}2\theta$) data (sample TK-64 from Koru), appear as fine-grained, ≥ 2 μm , curved flakes and extremely fine-grained fiber-like, < 2 μm plumy flakes (Fig. 4a, b). Kaolinites were developed as subhedral and euhedral plates and tightly packed book-like forms within the pores and surrounding fibrous I-S (Fig. 4c). Euhedral alunites are observed as fine-grained crystals, ~ 5 μm , which are surrounded by kaolinite and I-S crystals. Their morphology and interrelations with other minerals suggest that the I-S and kaolinite, as well as alunite, have a completely neo-crystallized origin. Euhedral to subhedral illites were developed as extremely coarse-grained plates, up to 20 μm , in the high grade, 275°C and/or anchimetamorphic, based on fluid inclusion and KI ($\Delta^{\circ}2\theta$) data, respectively (sample (TD-171) from Tesbihdere (Fig. 4d). The larger crystal sizes of illites appear related to the higher grade of formation, rather than inheritance from volcanogenic primary micas or detrital input from other sources. The other sample (KU-5) of similar high grade, 280°C and/or anchimetamorphic, has euhedral kaolinite or dickite as loosely stacked aggregates or booklets, together with euhedral quartz within the pores (Fig. 4e), indicating they developed in situ from hydrothermal fluids. Illites have a similar morphology in sample TD-171, with coarse-grained, up to 10 μm , subhedral plates or flakes (Fig. 4f).

4.3. Mineralogy

Based on optical microscopy and X-ray diffraction analysis, the alteration products of the volcanic and pyroclastic rocks are quartz, kaolinite, illite, mixed-layer illite-smectite (I-S) and chlorite-smectite (C-S) and smectite (Table 1, Bozkaya et al., 2007). Illite and kaolinite form a pure clay fraction as well as contributing to the clay mineral associations (Figs. 5 and 6), such as kaolinite + illite, kaolinite + illite + I-S and kaolinite + illite + I-S + smectite.

Illite and smectite contents and ordering types (Reichweite, R) of I-S were estimated by comparing, with NEWMOD, calculated patterns and the peak decomposition method with the WINFIT program. In sample TK-30 from Koru, that includes illite + I-S and kaolinite, I-S has R1 type ordering with a 75% illite and 25% smectite content (Fig. 6). In the another sample (TK-64) from the same deposit, analysis of the illite composite peak near 10 Å by comparing the calculated clay patterns with the experimental pattern showed that the high peak width ($\Delta^{\circ}2\theta = 0.97$) is related to wideness effect of I-S (R3 type with 90% illite and 10% smectite) peak (Fig. 7).

KI values of illites, change from 0.28 to 0.97 $\Delta^{\circ}2\theta$, indicating high-grade diagenesis for the Koru deposit, whereas for the Tesbihdere and Kumarlar deposits the grade is anchimetamorphic (Table 2, Fig. 8a, b). The percentages of swelling layers in most of illites is below 2%, except for three samples, which have approximately 3 and 7%. The crystallite sizes of illites are distributed between 15 and 55 nm, but are predominantly between 20 and 50 nm (Fig. 8a). The d_{060} values of illites are between 1.5003-1.5033 Å, mean 1.5016 Å, indicating a dioctahedral composition, as octahedral Fe+Mg are between 0.19 and 0.53 atoms per formula unit (a.p.f.u.), with a mean of 0.33 a.p.f.u. Homogenization temperatures from fluid inclusions within the sphalerites and quartz in the samples (Table 2, Fig. 8b) seem to be consistent with the possible conditions derived from the KI data (e.g., ~100–200°C interval

for high-grade diagenetic, and ~200–300°C interval for the anchizone, defined by the KI values of illites; Frey et al., 1980; Merriman and Frey, 1999).

Polytypes of illite are represented by $2M_1$, $1M$ and $1M_d$. $1M$, with the $1M_d$ polytype dominant for all illites, except from Kumarlar deposit where $2M_1$ is dominant (see Table 2, and Fig. 5). The appearance of the $2M_1$ polytype may be related to the higher grades (anchizone) rather than an inheritance from detrital micas in the volcanics, although some samples did not contain the $2M_1$ polytype despite of the higher, anchizonal grade.

4.4. Geochemistry

4.4.1. Major elements

Major element compositions of illites, volcanic host-rocks (rhyolite and rhyodacite) from the study area and hydrothermal illite from the Ulubey area of the Eastern Pontides (Celik et al., 1999), for comparison, are presented in Table 3. Different illites are compositionally similar with only minor variability but are distinctly different to the composition of the volcanic rocks (Fig. 9). The illite compositions are also similar to those from the Ulubey area, which has slightly lower concentrations of Al and Ti with higher concentrations of Mg and Ca. The structural formulas of illites were calculated based on 22 negative charges, matched to 10 oxide and 2 hydroxide ions (Weaver and Pollard, 1973). Illites have tetrahedral substitutions of 0.80–0.89 atoms of Al for Si, octahedral substitutions of 0.03–0.12 atoms of Fe and 0.04–0.19 atoms of Mg for Al (Table 3). The total octahedral cation numbers are slightly higher than 2.00 (2.05–2.09). The dominant interlayer cation is K, 0.56–0.60 atoms; Na is the other interlayer cation, 0.07–0.12 atoms. The average structural formulas of illites from the different deposits are given below:

Koru $(K_{0.56}Na_{0.08})(Al_{1.92}Fe_{0.07}Mg_{0.04}Ti_{0.05})(Si_{3.11}Al_{0.89}O_{10})(OH)_2 \cdot 2H_2O$

Tesbihdere $(K_{0.60}Na_{0.09})(Al_{1.93}Fe_{0.04}Mg_{0.04}Ti_{0.05})(Si_{3.13}Al_{0.87}O_{10})(OH)_2 \cdot 2H_2O$

Kumarlar $(K_{0.57}Na_{0.09})(Al_{1.87}Fe_{0.06}Mg_{0.09}Ti_{0.04})(Si_{3.18}Al_{0.82}O_{10})(OH)_2 \cdot 2H_2O$

4.4.2. Trace and REEs

Trace element and REE concentrations of illites from Koru, Kumarlar and Tesbihdere with a whole rock sample from Koru are presented in Table 4. Different size fractions have been analysed from three deposits and the elemental concentrations in each show no obvious significant differences. There are differences in elemental concentrations between deposits that may be related to the mineralization in the deposits. The base-metal deposits of Koru and Kumarlar have high concentrations of Cu, Pb, Zn, Cd compared with Tesbihdere where there is much less galena, sphalerite and chalcopyrite. Concentration of these metals are also significantly higher than that in the host rock from Koru indicating the high concentrations are unlikely to be from the host rock but rather derived from the mineralizing fluid. Other differences between the deposits can be seen in the spider diagrams (Fig. 10a, b). All illites are enriched in REE compared to chondrite, but except for Koru are depleted relative the North American Shale composite (NASC). The chondrite normalised REE patterns and abundances for both clay size fractions from Koru match those of the Koru whole rock and are identical to NASC except for the positive europium anomaly of the illites (Fig. 11a, b). Illites from the other deposits have lower chondrite normalised abundances, negative europium anomalies with HREE enrichment compared to the samples from Koru. REE abundances and the level of HREE enrichment are greater for samples from Tesbihdere than those from Kumarlar. Different illite size fractions from Tesbihdere and Kumarlar show lower REE concentration with decreasing illite size fraction, which is greatest for the LREE and least or non-existent for the HREE (Fig. 11c, d). The different size fractions from Koru are identical with no reduction in either LREE or HREE.

4.4.3. Stable isotopes

The oxygen and hydrogen isotope analyses of two illites from Koru and Kumarlar are presented in Table 5. The δD values are similar, but the $\delta^{18}O$ values are 4.5‰ different. The isotopic distribution of illites and water composition are presented in Fig. 12, together with the lines of meteoric water (Craig, 1961) and supergene–hypogene (Sheppard et al., 1969).

The calculated isotopic ratios of fluids in equilibrium with illite-water fractionation factors (Savin and Lee, 1988 for $\delta^{18}O$; Yeh, 1980 for δD) show that illite-forming fluids evolve toward more positive $\delta^{18}O$ and more negative δD values with increasing temperature. The calculation of the fractionation factors for illites in the Koru (TK-64) and Kumarlar (KU-21) samples used the average values for homogenization temperatures (300°C and 147°C for TK-64, 278°C for KU-21) of fluid inclusions in sphalerite and quartz. The initial water compositions correspond to the local geothermal water composition of Biga Peninsula (LGW, $\delta^{18}O = -8.5‰$, $\delta D = -54‰$, $T^{\circ}C = 46.3$, Yilmaz et al., 2010) or Marmara (MGW, Eisenlohr, 1997) rather than Eastern Mediterranean Meteoric Water ($\delta^{18}O = \sim 6.12‰$, $\delta D = \sim 37.96‰$, Gat et al., 1996) (Fig. 12). Modelling this water as it evolved to higher temperature, using the equation of Yeh (1980), intersects the measured δD and $\delta^{18}O$ values of the illites from Koru and Kumarlar. The temperature of the water in equilibrium with the illites from both deposits corresponds closely to the high temperature fluid inclusions homogenization temperatures (Fig. 12). The model δD and $\delta^{18}O$ fluid evolution coincides with the ore-forming fluid compositions from quartz in the main base-metal ore deposits at Balcilar, Arapucandere and Tesbihdere but not the Ovacik-Narlica deposits (Yilmaz et al., 2007, 2010; Bozkaya and Banks, 2014) where the fluid inclusion waters plot at lower δD values. The isotopic compositions of the majority of the fluid inclusion waters plot, to variable extents, away from magmatic water box, thus the origin of hydrothermal fluids might seem to be local meteoric (or geothermal) water that shifted to more positive $\delta^{18}O$ and more negative δD compositions

due to fluid-rock isotopic exchange as the temperature increased (Figs. 12 and 13). This is not the case as it would imply a number of different generations of illite with the last being the high temperature generation. It would also suggest that trapping of fluid inclusions in quartz would show higher homogenization temperatures in the later generations. The data from Koru and Kumarlar shows the opposite with lower temperatures in later generations. A similar progression from high to low temperatures was reported at Tesbihdere and Arapucandere (Bozkaya et al., 2014; Bozkaya and Banks, 2015) which are located in the same region and are of a comparable style of mineralization. Cooling of the initial high temperature fluid in equilibrium with illite would be compatible with the fluid inclusion evidence and would imply that the local geothermal waters contain a significant magmatic fluid component and are not just heated by the magmatism. However, we might also expect to find different illite generations with their δD and $\delta^{18}O$ composition reflecting a formation at lower temperatures. That we have only two samples from the areas that would have seen the highest temperature magmatic fluids, it is not surprising we find only one generation of illite. It may be possible that different generations of illites were formed away from the main upwelling zone by cooler fluids with a resultant change in δD and $\delta^{18}O$ in line with the predicted isotopic fractionation at lower temperatures. The conventional interpretation in this style of mineralization is that data plotting between the magmatic box and meteoric water line represents a mixture of these two fluids and in many cases this is true. However, in the deposits mentioned here from the Biga Peninsula the fluid inclusion data, although showing cooling, does not show an associated lowering of salinity as would be expected on mixing these two fluids. In these cases cooling is due to fluctuations in pressure during vein opening and not by fluid mixing (Bozkaya and Banks, 2015). It is noticeable that the geothermal waters do not plot with the value for meteoric water for non-geothermal areas (Eisenlohr, 1997) but at more negative δD and $\delta^{18}O$ where the cooling line of water in equilibrium with illite, high temperature

magmatic fluid, intersects the EMMW line at low temperature, supporting our earlier contention that the geothermal waters contain a significant component of the high temperature magmatic fluid.

4.4.4 Rb–Sr dating

The crystal sizes of analysed illites are commonly greater than $2\mu\text{m}$, as seen during SEM investigations (see Fig. 4), but do not contain any detrital micas because of their pristine volcanic-hydrothermal origin. Size fractions of $<2\mu\text{m}$ were extracted for Rb–Sr age dating. The Rb–Sr isotope data for the different sized clay fractions of samples from different locations are presented in Table 6 and plotted on a Rb–Sr isochron diagram in Fig. 14. The slope of the linear relationship between $^{87}\text{Sr}/^{86}\text{Sr}$ and $^{87}\text{Rb}/^{86}\text{Sr}$ ratios for the whole data set corresponds to an age of 22.4 ± 2.3 Ma (MSWD = 2.4), with an initial $^{87}\text{Sr}/^{86}\text{Sr}$ ratio of 0.70694 ± 0.00088 . The samples from different deposits are parts of the same linear relationship, and hence indicate precipitation from fluids with the same initial $^{87}\text{Sr}/^{86}\text{Sr}$ ratio. This requires a homogeneous fluid composition over large distances, probably due to the lithological similarity of the host rocks (Oligocene pyroclastic rocks) that the fluids interacted with in two different deposits.

5. Discussion

5.1. Petrography

The optical and SEM investigations of the altered pyroclastic rocks from the different deposits clearly show that the presence of clay minerals is related to hydrothermal alteration such as kaolinization and sericitization. There is no evidence of any detrital components (non-volcanic or extraclastic). The occurrence of illite is as fine-grained micaceous (i.e., sericite) scaly aggregates spreading over the volcanic groundmass and filling the pore spaces. The

presence of both illite and I-S with different crystal sizes in Koru sample may be indicative of either an intermediate stage for the progressive evolution from smectite to illite in other words illitization did not proceed to completion because of an inadequate temperature. In addition to this, illite and I-S may also be an indicator for subsequent occurrence, firstly illite at $\sim 300^{\circ}\text{C}$ and subsequently I-S, at $\sim 150^{\circ}\text{C}$, related to two different thermal events, based on the fluid inclusion data. The development of kaolinites was as authigenetic infillings of circular and ellipsoidal pore spaces (see Fig. 3). The SEM shows that the illite flakes and kaolinite/dickite booklets have a similar crystal size and morphology. Euhedral kaolinite, book-like platy aggregates, together with euhedral quartz crystals developed within the pores (see Fig. 4), indicating neo-crystallization or neo-formation directly from the hydrothermal fluids.

5.2. Mineralogy

The consistency of the grade derived from the illite KI values ($\Delta^{\circ}2\theta$) and the homogenization temperatures of primary quartz-hosted fluid inclusions, indicates illite formation is compatible with hydrothermal alteration and not from detrital input or surficial weathering. The anchi-epimetamorphic KI values of the predominantly monomineralic illites, or fine-grained white K-micas (sericites), from Kumarlar and Tesbihdere, are indicative of the highest-temperature alteration conditions (i.e., phyllic alteration). A monomineralic phase is characteristic for hydrothermal vein sericitization as previously stated by several authors (Eberl et al., 1987; Parry et al., 2002). However, diagenetic illite/I-S and kaolinite from the Koru deposit are indicative of relatively lower temperature conditions. This principally relates to sample locations being further away from ore vein where the fluid temperatures would have been higher. The first order peak decomposition of Koru illite shows two types of illitic phases, as illite and I-S. The two illitic phases may be the result of either progressive evolution from the smectite to illite transformation or a subsequent occurrence related to two

different thermal events. Fluid inclusion data (primary inclusions related to relatively high temperature conditions ~ 300 °C, secondary inclusions related to lower temperature conditions ~ 150 °C) support the latter origin. The low d_{060} (or b cell dimension) values of illites, indicate low contents of octahedral Mg and Fe, and are characteristic of a temperature control rather than a pressure effect (e.g., Sassi and Scolari, 1974; Guidotti and Sassi, 1986). Illites generally have a mixture of 1M and 1M_d polytypes, but 2M₁ is found in illite from Kumarlar associated with 1M and 1M_d polytypes. The dominance of 1M illite and its presence in the anchi-epizonal grade (> 200 °C) was previously reported in hydrothermal alteration zones (Shirozu and Higashi, 1972; Meunier and Velde, 1982; Inoue et al., 1987, 1988; Drits et al., 1993; Inoue and Kitagawa, 1994; Drews-Armitage et al., 1996; Celik et al., 1999; Tillick et al., 2001; Yan et al., 2001; Bove et al., 2002; Schleicher, 2006).

5.3. Geochemistry

The major element chemistry of host-rocks and illites show that illites have relatively high Al and low Fe and Mg contents as confirmed by low d_{060} values. The enrichment of aluminum and potassium relative to sodium, calcium, magnesium and iron in illites (or fine grained micaceous occurrences, ie., sericites) seems to be related to the host-rock composition and nature of hydrothermal alteration at a high water/rock ratio and low pH conditions (Berger and Velde, 1992; Meunier and Velde, 2004). Similar compositions for hydrothermal illites associated with massive sulfide deposits from western Pontides was reported by Celik et al. (1999). Low Fe- and Mg-bearing illites associated with volcanic hosted hydrothermal ore deposits have been proposed by these authors as due to the presence of sulfides (pyrite, chalcopyrite) or oxides (hematite), and a low content of Mg in host-rock, respectively.

The similarity in the isotope composition and trends of the fluid inclusions trapped in quartz and illite-forming waters implies that these are likely to have the same origin. The

extension of the isotopic compositions of illite-forming waters along the fractionation trends from high to low temperatures would intersect close to the present day local meteoric or geothermal water but at more negative δD values than the estimate of meteoric water at the time of mineralization (Fig. 12). The common interpretation is that this shows mixing between meteoric and magmatic fluids, but there is no other evidence to support this hypothesis. Fluid inclusion data does not support a cooling and dilution trend as would be expected, rather the Th values are, within error, constant as is the salinity. Therefore, we interpret the fluid isotopic data as showing the cooling of the initial high temperature magmatic fluid, while maintaining a state of near equilibrium with the alteration products produced by this fluid. As can be seen on Fig. 12, such fluids would plot in the same area of the $\delta^{18}O - \delta D$ diagram as the measured fluid inclusion isotope data. Fluid inclusion evidence for Tesbihdere and Arapucandere (Bozkaya et al. 2014, Bozkaya and Banks, 2015) show the magmatic high temperature fluids flashed and boiled when the pressure changed from lithostatic to hydrostatic or lower at depths of approximately 600m. In a hydrostatic system, as would be required for meteoric waters to descend and mix with the higher temperature magmatic fluids, the pressure would be too low to prevent boiling of the meteoric water at lower temperatures and therefore any mixing of these two fluids would produce a trend of decreasing temperatures which is not observed in the fluid inclusion data. For a fluid at 300°C in a hydrostatic system, a depth of some 1600m would be required to prevent boiling and this does not fit with the geological evidence, i.e., amount of material eroded from the top of the deposit or the normal model depth for epithermal mineralization. Therefore, the intersection of the trends in Fig. 12 with the present day local geothermal waters and the position of fluid inclusion δD and $\delta^{18}O$ values do not imply a significant involvement of local meteoric water, at the time of mineralization. In any cases the best estimate of meteoric water at the time of mineralization, which is at more positive δD values on the MWL, perhaps shows the effect of

the magmatic vapour/low salinity liquid ascending to near the surface today. It does not indicate that meteoric water is the dominant fluid in the mineralized system, which was undoubtedly magmatic.

5.4. Age of Mineralization

The Rb–Sr age of illites indicates that the illites were developed in the lowermost Miocene. According to age distribution of volcanic and plutonic rocks, and alterations or mineralizations in the Biga Peninsula (Fig. 15), this age corresponds with that of the Tepeoba porphyry Cu-Mo-Au deposit, which is related to Late Oligocene granodioritic and granitic porphyries intruded into metabasic and metasedimentary rocks (Yigit, 2012). The age approximately corresponds to the age of the many plutons in the Biga Peninsula (Upper Oligocene-Lower Miocene, Figs. 1 and 15), indicating the heat and source of the hydrothermal fluids is primarily related to plutonic intrusions. In other words, plutonic intrusions that are related to latest Oligocene-Early Miocene extension (Bonev and Beccaletto, 2007; Yigit, 2012) are the main cause of hydrothermal activity in the Biga Peninsula.

6. CONCLUSIONS

The crystal-chemical and geochemical (major, trace and isotope) data of illites from the hydrothermal alteration zones in three volcanic-hosted base-metal deposits in the Biga Peninsula shows that illite, as a product of alteration caused by hydrothermal fluids, can be used to better understand some aspects (i.e., origin of fluids, temperature conditions, age of hydrothermal activity etc.) and supports evidence from other techniques primarily related to the fluids of the mineralizing system. The illites in this study have similar mineralogical and geochemical properties to hydrothermal illites from several deposits around the world. The

subhedral and euhedral shapes indicating a neocrystallization origin, the dominance of 1M and 1M_d polytypes, low d_{060} values, low octahedral Mg+Fe contents are similar despite the different temperature conditions. KI values are compatible with the temperature data obtained from fluid inclusions in quartz and sphalerite, thus the KI values of illite can be used in estimating temperature conditions for alteration products when fluid inclusion data is not available. The stable isotope data, δD and $\delta^{18}O$, of illite from both deposits plots close to the magmatic water box (Fig. 12) indicating that the hydrothermal fluids producing these alteration products were predominantly of magmatic water. The values are also consistent with the δD and $\delta^{18}O$ values obtained from fluid inclusions and host quartz that also plot close to the mineral data and indicate a dominantly magmatic fluid.

The calculated fractionation trends of fluids in equilibrium with the products of alteration at lower temperatures is close to the δD and $\delta^{18}O$ values from fluid inclusions and host quartz, plotting between the magmatic box and the meteoric water line. In this study, we show that this process is a more likely alternative to the conventional interpretation that data plotting in these areas of the δD and $\delta^{18}O$ diagram represent mixing of magmatic and meteoric waters.

The ability to determine the age of the alteration, by using Rb/Sr data of the illites, is advantageous as in this case a clear link to the age of mineralization, determined by other methods or on different samples can be made. Dating the products of the mineralizing fluids clearly provides a better age than dating the enclosing volcanic rocks, which is the more common approach in the Biga Peninsula. The latest Oligocene and lowest Miocene age of illites indicates plutonic intrusions related to extensional tectonic regime in the Biga Peninsula, are the main cause of hydrothermal activities that led to the numerous mineral deposits. The type and products of fluid-rock interactions can therefore be linked with the deposition of ores and provided constraints on the physico-chemical conditions during

mineralization. Thus, it is possible to more fully understand and model this type of mineralizing system.

We have shown that utilizing mineralogical and geochemical data from illites in combination with data from fluid inclusions and their host quartz has some important advantages over interpreting fluid inclusion data in isolation. Therefore illites or illite-bearing mixed layers (I-S) can be of use for better understanding the age and conditions of hydrothermal ore fluids.

Acknowledgements

The first two authors thank to Prof. Dr. Hüseyin Yalcin and Prof. Dr. Ahmet Gökce, the directors of the Mineralogy-Petrography-Geochemistry, Ore Petrography and Fluid Inclusion Laboratories in Cumhuriyet University, Sivas, Turkey, for their laboratory and scientific supports. We also thank to Assoc. Prof. Dr. Nazan Keskin, the director of Electron Microscopy Laboratories in Pamukkale University, for providing help during SEM-EDS experiments. Radiometric dating work of this research was funded by the Queensland Geothermal Energy Centre of Excellence (QGECE). Support by Hal Gurgenci (former QGECE's director) is particularly acknowledged. We thank Yue-xing Feng and Ai Duc Nguyen for their help with analytical work and technical assistance to perform Rb-Sr and trace element analyses. The authors also thank to Prof. Dr. Selahattin Kadir and an anonymous reviewer for their constructive reviews.

References

Aldanmaz, E., Pearce, J.A., Thirlwall, M.F., Mitchell, J.G., 2000. Petrogenetic evolution of late Cenozoic, post-collision volcanism in western Anatolia, Turkey. *J. Volcanol. Geoth. Res.* 102, 67–95.

- Bailey, S.W., 1988. X-ray diffraction identification of the polytypes of mica, serpentine, and chlorite. *Clay. Clay Miner.* 36, 193–213.
- Bauluz, B., 2007. Illitization processes: Series of dioctahedral clays and mechanisms of formation. in: Nieto, F., Millan, J. (Eds.). *Diagenesis and Low-Temperature Metamorphism. Theory, Methods and Regional Aspects. Seminarios de la Sociedad Española de Mineralogía. Volumen 3, Sociedad Española de Mineralogía, Jaén*, pp. 31–39.
- Bauluz B., Peacor, D.R., Ylagan, R.F., 2002. Transmission electron microscopy study of smectite illitization during hydrothermal alteration of a rhyolitic hyaloclastite from Ponza, Italy. *Clay. Clay Miner.* 50, 157–173.
- Bechtel A., Hoernes S., 1990. Oxygen isotope fractionation between oxygen of different sites in illite minerals: a potential single-mineral thermometer. *Contrib. Mineral. Petrol.* 104, 463–470.
- Berger, G., Velde, B., 1992. Chemical-parameters controlling the propylitic and argillic alteration process, *Eur. J. Mineral.*, 4, 1439–1455.
- Birkle, P., Satir, M., 1995. Dating, geochemistry and geodynamic significance of the Tertiary magmatism of the Biga Peninsula, NW Turkey. In: Erler, A., Ercan, T., Bingöl, E., Örcen, S. (Eds.), *The Geology of the Black Sea Region, Directorate of Mineral Research and Exploration, Ankara*, pp. 171–180.
- Bonev, N., Beccaletto, L., 2007. From syn- to post-orogenic Tertiary extension in the North Aegean region: constraints on the kinematics in the eastern Rhodope–Thrace, Bulgaria–Greece and the Biga Peninsula, NW Turkey. in: Taymaz, T., Yilmaz, Y., Dilek, Y. (Eds.). *The Geodynamics of the Aegean and Anatolia, Geol. Soc. London, Special Publications 291*, 113–142.

- Bove, D.J., Eberl, D.D., McCarty, D.K., Meeker, G.P., 2002. Characterization and modeling of illite crystal particles and growth mechanisms in zoned hydrothermal deposit, Lake City, Colorado. *Am. Mineral.* 87, 1546-1556.
- Bozkaya, G., 2001. Geology of Koru (Çanakkale) barite bearing lead–zinc deposits. PhD Thesis, University of Cumhuriyet, 126 p (unpublished).
- Bozkaya, G., Banks, D.A., 2014. Sulfur isotope geochemistry and mineralogy of Balcilar vein type barite-sulphide mineralization, Biga Peninsula, NW Turkey. *Pamukkale Univ. J. Eng. Sci.*, doi: 10.5505/pajes.2014.87699 (in press).
- Bozkaya, G., Banks, D.A., 2015. Physico-chemical controls on ore deposition in the Arapucandere Pb-Zn-Cu-precious metal deposit, Biga Peninsula, NW Turkey. *Ore Geol. Rev.* 66, 65–81.
- Bozkaya, G., Banks, D.A., Ozbas, F., Wallington, J., 2014. Fluid processes in the Tesbihdere base-metal-Au deposit: implications for epithermal mineralization in the Biga Peninsula, NW Turkey. *Cent. Eur. J. Geosci.* 6, 148–169.
- Bozkaya, Ö., Bozkaya, G., Yalcin, H., Gokce, A., 2007. Diagenetic, hydrothermal and surface alterations in the Eocene aged pyroclastic rocks in the vicinity of Koru Pb-Zn deposits. 13th National Clay Symposium, 12-14 September 2007, Suleyman Demirel University, Isparta, Proceedings, 80–96.
- Bozkaya, G., Celik, S., 2010. (20th General Meeting of the International Mineralogical Association (IMA), Eötvös Lorand University, Budapest, 21-27 August, 2010. Abstract volume). The origin of hydrothermal fluids in the Kumarlar Pb-Zn veins, Canakkale, NW Turkey, p. 79.
- Bozkaya, G., Gokce, A., 2001. Geology, ore petrography and fluid inclusion characteristics of the Koru (Çanakkale) Pb–Zn deposits. *Cumhuriyet Univ. Bull. Fac. Eng. Ser. A Earth Sci.* 18, 55–70.

- Bozkaya, G., Gokce, A., 2007. Fluid inclusion and isotope geochemistry studies of the galena-barite veins in Balcılar (Lapseki-Çanakkale) area. Abstract of 60th Geological Congress of Turkey, pp. 188–190.
- Bozkaya, G., Gokce, A., 2009. Lead and sulfur isotope studies of the Koru (Canakkale, Turkey) lead–zinc deposits. *Turk. J. Earth Sci.* 18, 127–137.
- Browne, P.R.L., Ellis, A.J., 1970. The Ohaaki-Broadlands hydrothermal area, New Zealand: Mineralogy and related geochemistry. *Am. J. Sci.* 269, 97–131.
- Buatier, M.D., Peacor, D.R., O’Neil, J.R., 1992. Smectite-illite transition in Barbados accretionary wedge sediments: TEM and AEM evidence for dissolution/crystallization at low temperature. *Clay. Clay Miner.* 40, 65–80.
- Campbell, A.R., Larson, P.B., 1988. Introduction to stable isotope applications in hydrothermal systems. in: Richards, J.P., Larson, P.B. (Eds.). *Reviews in Economic Geology*, vol. 10, Society of Economic Geologists, pp. 173–193.
- Celik, M., Karakaya, N., Temel, A., 1999. Clay minerals in hydrothermally altered volcanic rocks, Eastern Pontides, Turkey. *Clay. Clay Miner.* 47, 708–717.
- Craig, H., 1961. Isotopic variations in meteoric waters. *Science* 133, 1702–1703.
- Duba, D., William-Jones, A.E., 1983. The application of illite crystallinity, organic matter reflectance and isotopic techniques to mineral exploration: a case study in southwestern Gaspé, Quebec. *Econ. Geol.* 78, 1350–1363.
- Drews-Armitage, S.P., Romberger, S.B., Whitney, C.G., 1996. Clay alteration and gold deposition in the genesis and blue star deposits, Eureka County, Nevada. *Econ. Geol.* 91, 1383–1393.
- Drits, V.A., Weber F., Salyn, A.L., Tsipursky, S.I., 1993. X-ray identification of one-layer illite varieties: application to the study of illites around uranium deposits of Canada. *Clay. Clay Mineral.* 41, 389–398.

- Eberl, D.D., Środoń, J., Lee, M., Nadeau, P.H., Northrop, H.R., 1987. Sericite from the Silverton caldera, Colorado: Correlation among structure, composition, origin, and particle thickness. *Am. Mineral.* 72, 914–934.
- Eberl, D.D., Velde, B., 1989. Beyond the Kübler index. *Clay Miner.* 24, 571–577.
- Ece, Ö.I., Schroeder, P.A., Smilley, M.J., Wampler, J.M., 2008. Acid-sulfate hydrothermal alteration of andesitic tuffs and genesis of halloysite and alunite deposits in the Biga Peninsula, Turkey. *Clay Miner.* 43, 281–315.
- Eggins, S.M., Woodhead, J.D., Kinsley, L.P.J., Mortimer, G.E., Sylvester, P., McCulloch, M.T., Hergt, J.M., Handler, M.R., 1997. A simple method for the precise determination of ≥ 40 trace elements in geological samples by ICPMS using enriched isotope internal standardisation, *Chem. Geol.* 134, 311–326.
- Eisenlohr, T., 1997. The thermal springs of the Armutlu Peninsula (NW Turkey) and their relationship to geology and tectonics in active tectonics of Northwestern Anatolia–The Marmara Poly Project. in: Schindler C., Pfister M. (Eds.). vdf Hochschulverlag AG an der ETH Zurich, pp. 197–228.
- Ercan, T., Satir, M., Steinitz, G., Dora, A., Sarifakioglu, E., Adis, C., Walter, H., Yildirim, T., 1995. Characteristics of Tertiary volcanism in the Biga Peninsula and Gökçeada, Bozcaada and Tavsan islands (NW Anatolia), *Bull. Miner. Res. Explor. Inst. Turk.* 117, 55–86 (in Turkish with English abstract).
- Ercan, T., Turkecan, A., Guillou, H., Satir, M., Sevin, D., Saroglu, F., 1998. Features of the Tertiary volcanism around the Sea of Marmara. *Bull. Miner. Res. Explor. Inst. Turk.* 120, 199–222 (in Turkish with English abstract).
- Frey, M., Teichmüller, M., Teichmüller, R., Mullis, J., Konzi, B., Breitschmid, A., Gruner, U., Schwizer, B., 1980. Very low-grade metamorphism in external parts of the central

- Alps: Illite crystallinity, coal rank and fluid inclusion data. *Eclogae Geol. Helv.* 73, 173-203.
- Fukuchi, R., Fujimoto, K., Kameda, J., Mari Hamahashi, M., Yamaguchi, A., Kimura, G., Hamada, Y., Hashimoto, Y., Kitamura, Y., Saito, S., 2014. Changes in illite crystallinity within an ancient tectonic boundary thrust caused by thermal, mechanical, and hydrothermal effects: An example from the Nobeoka Thrust, southwest Japan. *Earth Planets Space* 66, 116.
- Gat, J.R., Shemesh, A., Tziperman, E., Hecht, A., Georgopoulos, D., Basturk, O., 1996. The stable isotope composition of waters of the eastern Mediterranean Sea. *J. Geophys. Res.* 101, 6441–6451.
- Golding, S.D., Uysal, I.T., Glikson, M., Baublys, K.A., and Southgate, P.N., 2006, Timing and chemistry of fluid-flow events in the Lawn Hill platform, northern Australia, *Econ. Geol.* 101, 1231–1250.
- Grathoff, G.H., Moore, D.M., 1996. Illite polytype quantification using Wildfire[®] calculated X-ray diffraction patterns. *Clay. Clay Miner.* 44, 835–842.
- Guidotti C.V., Mazzoli C, Sassi F.P., Blencoe J.G., 1992. Compositional controls on the cell dimensions of 2M1 muscovite and paragonite. *Eur. J. Mineral.* 4, 283–297.
- Guidotti, C.V., Sassi, F.P., 1986. Classification and correlation of metamorphic facies series by means of muscovite b0 data from low-grade metapelites. *Neues Jb. Miner. Abh.* 153, 363–380.
- Harvey, C.C., Browne, P.R.L., 1991. Mixed-layer clay geothermometry in the Wairakei geothermal field, New Zealand. *Clay. Clay Miner.* 39, 614.-621.
- Hedenquist, J.W., Browne, P.R.L., 1989. The evolution of the Waiotapu geothermal system, New Zealand, based on the chemical and isotopic composition of its fluids, minerals and rocks. *Geochem. Cosmochim. Acta* 53, 2235-2257.

- Inoue, A., 1995. Formation of clay minerals in hydrothermal environments. In: Velde, B. (Ed.). *Origin and Mineralogy of Clays*, Springer, Berlin, pp. 268-330.
- Inoue, A., Kitagawa, R., 1994. Morphological characteristics of illitic clay minerals from a hydrothermal system. *Am. Mineral.* 79, 700-711.
- Inoue, A., Kohyama, N., Kitagawa, R., Watanabe, T., 1987. Chemical and morphological evidence for the conversion of smectite to illite. *Clay. Clay Miner.* 35, 111-120.
- Inoue, A., Velde, B., Meunier, A., Touchard, G., 1988. Mechanism of illite formation during smectite-to-illite conversion in a hydrothermal system. *Am. Mineral.* 73, 1325–1334.
- Jagodzinski, H., 1949. One dimensional disorder in crystals and their influence on X-ray interferences: I. Calculation of the degree of disorder from the X-ray intensities *Acta Crystallogr.* 2, 201–207 (in German).
- Jankovic, S., 1986. Tethyan Eurasian Metallogenic Belt: relations of mineral associations and their tectonic setting. *Geotecton. Metallog.* 10, 99–124.
- Jennings, S., Thompson, G.R., 1986. Diagenesis in Plio-Pleistocene sediments in the Colorado River delta, southern California. *J. Sediment. Petrol.* 56, 89–98.
- Ji, J., Browne, P.R.L., 2000. Relationship between illite crystallinity and temperature in active geothermal systems of New Zealand. *Clay. Clay Miner.* 48, 139–144.
- Jingwen, M., Pirajno, F., Lehmann, B., Maocheng, L., Berzina, A., 2014. Distribution of porphyry deposits in the Eurasian continent and their corresponding tectonic settings. *J. Asian Earth Sci.* 79, 576–584.
- Kübler, B., 1968. Evaluation quantitative du métamorphisme par la cristallinité de l'illite. *Bull. Centre Rech. Pau-SNPA.* 2, 385–397.
- Krumm, S., 1996. WINFIT 1.2: version of November 1996 (The Erlangen geological and mineralogical software collection) of WINFIT 1.0: a public domain program for

- interactive profile-analysis under WINDOWS. XIII Conference on Clay Mineralogy and Petrology, Praha, 1994. Acta U. Carol., Geologica 38, 253–261.
- Ludwig, K.R. (2003), User's manual for Isoplot 3.00. A geochronological Toolkit for Microsoft Excel, Berkeley Geochronology Center, Special Publication, No. 4a, Berkeley, California.
- Merriman, R.J., Frey, M., 1999. Patterns of very low-grade metamorphism in metapelitic rocks. in: Frey, M., Robinson, D. (Eds.), Low Grade Metamorphism, Blackwell, Oxford, pp. 61–107.
- Meunier, A., Velde, B., 1982. X-ray-diffraction of oriented clays in small quantities (0.1 mg), Clay Miner. 17, 259–262.
- Meunier, A., Velde, B., 2004. Illite: Origins, Evolution and Metamorphism. Springer-Verlag, Berlin, 286 pp.
- Middleton, A.W., Uysal, I.T., Bryan, S.E., Hall, C.M., Golding, S.D., 2014. Integrating ^{40}Ar – ^{39}Ar , ^{87}Rb – ^{87}Sr and ^{147}Sm – ^{143}Nd geochronology of authigenic illite to evaluate tectonic reactivation in an intraplate setting, central Australia. Geochim. Cosmochim. Acta 134, 155–174.
- Middleton, A.W., Uysal, I.T., Golding, S.D., 2015. Chemical and mineralogical characterisation of illite-smectite: Implications for episodic tectonism and associated fluid flow, Central Australia. Geochim. Cosmochim. Acta 148, 284–303.
- Moore, D.M., Reynolds, R.C., 1997. X-ray Diffraction and the Identification and Analysis of Clay Minerals. Oxford University Press, New York, 378 p.
- Okay, A.I., Siyako, M., Bürkan, K.A., 1990. Geology and tectonic of the Biga Peninsula. Turk. Assoc. Pet. Geol. Bull. 2, 83–121 (in Turkish with English abstract).

- Okay, A.I., Siyako, M., Bürkan, K.A., 1991. Geology and tectonic evolution of the Biga Peninsula. *Bull. Tech. Univ. Istanbul* 44, 191–255.
- Parry, W.T., Jasumback, M., Wilson, P.N., 2002. Clay mineralogy of phyllic and intermediate argilic alteration at Bingham, Utah. *Econ. Geol.* 97, 221–239.
- Pollastro, R. M., 1993. Considerations and applications of the illite/smectite geothermometer in hydrocarbon-bearing rocks of Miocene to Mississippian age. *Clay. Clay Miner.* 41, 119–133.
- Ramseyer, K., Boles, J.R., 1986. Mixed-layer illite/smectite minerals in Tertiary sandstones and shales, San Joaquin basin, California. *Clay. Clay Miner.* 34, 115-124.
- Reynolds, R.C., 1980. Interstratified clay minerals. in: Brindley, G.W., Brown, G. (Eds.), *Crystal Structures of Clay Minerals and Their X-ray Identification*, Mineralogical Society, London, pp. 249–303.
- Reynolds, R.C., Jr., 1985. NEWMOD[®] A computer program for the calculation of one-dimensional diffraction patterns of mixed layered clays. R. C. Reynolds, Jr., 8 Brook Dr., Hanover.
- Roedder, E., 1984. Fluid inclusions, *Reviews in Mineralogy Vol 12*. Mineralogical Society of America, P.H. Ribbe ed., 644 p.
- Sassi, F. P., Scolari, A., 1974. The b_0 value of the potassic white micas as a barometric indicator in low-grade metamorphism of pelitic schists. *Contrib. Mineral. Petrol.* 45, 143–152.
- Savin, S.M., Lee, W., 1988. Isotopic studies of phyllosilicates, in: Bailey, S.W. (Ed.). *Hydrous Phyllosilicates (Exclusive of Micas)*. *Reviews in Mineralogy*, 19, Mineralogical Society of America, Washington, D.C. pp. 189–223.

- Schmid, R., 1981. Descriptive nomenclature and classification of pyroclastic deposits and fragments: Recommendations of the IUGS Subcommittee on the Systematics of Igneous Rocks. *Geology*, 9, 41-43.
- Schleicher, A.M., Warr, L.N., Kober, B., Laverret, E., Clauer, N., 2006. Episodic mineralization of hydrothermal illite in the Soultz-sous-Forêts granite, Upper Rhine Graben/France. *Contrib. Mineral. Petrol.* 152, 349-364.
- Sharp, Z. D., 1990. Laser-based microanalytical method for the in situ determination of oxygen isotope ratios of silicates and oxides. *Geochim. Cosmochim. Acta* 54, 1353–1357.
- Sheppard, S.M.F., Nielsen, R.L., Taylor, H.P.Jr., 1969. Oxygen and hydrogen isotope ratios of clay minerals from porphyry copper deposits. *Econ. Geol.* 64, 755–777.
- Shirozu, H., Higashi, S., 1972. X-ray examination of sericite minerals associated with Kuroko deposits. *Clay Sci.* 4, 137–142.
- Siyako, M., Burkan, K.A., Okay, A.I., 1989. Tertiary geology and hydrocarbon potential of the Biga and Gelibolu Peninsulas. *Turk. Assoc. Pet. Geol. Bull.*, 1, 183–199 (in Turkish with English abstract)
- Środoń, J., 1984. X-ray powder diffraction identification of illitic materials. *Clay. Clay Miner.* 32, 337–349.
- Tillick, D.A., Peacor, D.R., Mauk, J.L., 2001. Genesis of dioctahedral phyllosilicates during hydrothermal alteration of volcanic rocks: I. The Golden Cross epithermal ore deposit, New Zealand. *Clay. Clay Miner.* 49, 126–140.
- Uysal, I.T., Golding, S.D. and Thiede, D.S., 2001, K-Ar and Rb-Sr dating of authigenic illite-smectite in Late Permian coal measures, Queensland, Australia: implication for thermal history. *Chem. Geol.* 171, 195–211.

- Uysal, I.T., Gasparon, M., Bolhar, R., Zhao, J.-X., Feng, Y.-X., Jones, G., 2011. Trace element composition of near-surface silica deposits - A powerful tool for detecting hydrothermal mineral and energy resources. *Chem. Geol.* 280, 154–169.
- Velde, B., Vasseur, G., 1992. A kinetic model of the smectite to illite transformation based on diagenetic mineral series. *Am. Mineral.* 77, 967–976.
- Warr, L.N., Rice, A.H.N., 1994. Interlaboratory standardization and calibration of clay mineral crystallinity and crystallite size data. *J. Metamorph. Geol.* 12, 141–152.
- Weaver, C.E., Pollard, L.D., 1973. *The Chemistry of Clay Minerals*. Developments in Sedimentology, 15, Elsevier, Amsterdam, 213 pp.
- Whitney, G., 1990. Role of water in the smectite-to-illite reaction, Clay. *Clay Miner.* 38, 343–350.
- Yan, Y., Tillick, D.A., Peacor, D.R., Simmons, S.F., 2001. Genesis of dioctahedral phyllosilicates during hydrothermal alteration of volcanic rocks: The Broadlands hydrothermal system, New Zealand. *Clay. Clay Miner.* 49, 141–155.
- Yanagiya, K., Sato, J., 1989. Report on the mineral exploration in the Canakkale area, Republic of Turkey. MTA Report No: 8999. Phase I-II. 132 p.
- Yeh, H.-W., 1980. D/H ratios and late stage dehydration of shales during burial. *Geochim. Cosmochim. Acta* 44, 341–352.
- Yigit, O., 2009. Mineral deposits of Turkey in relation to Tethyan metallogeny: Implications for future mineral exploration, *Econ. Geol.* 104, 19–51.
- Yigit, O., 2012. A prospective sector in the Tethyan Metallogenic Belt: Geology and geochronology of mineral deposits in the Biga Peninsula, NW Turkey. *Ore Geol. Rev.* 46, 118–148.
- Yilmaz, H., 2002. Ovacik gold deposit: an example of quartz-adularia-type gold mineralization in Turkey. *Econ. Geol.* 97, 1829–1839.

- Yilmaz, H., Oyman, O., Arehart, G.B., Colakoglu, A.R., Billor, Z., 2007. Low-sulfidation type Au-Ag mineralization at Bergama, Izmir, Turkey. *Ore Geol. Rev.* 32, 81–124.
- Yilmaz, H., Oyman, T., Sönmez, F.N., Arehart, G.B., Billor, Z., 2010. Intermediate sulfidation epithermal gold-base metal deposits in Tertiary subaerial volcanic rocks, Sahinli/Tespil Dere (Lapseki/Western Turkey). *Ore Geol. Rev.* 37, 236–258.
- Yilmaz, Y., 1990. Comparison of young volcanic associations of western and eastern Anatolia formed under a compressional regime: a review. *J. Volcanol. Geotherm. Res.* 44, 69–87.
- Yilmaz, Y., Genc, S.C., Karacik, Z., Altunkaynak, S., 2001. Two contrasting magmatic associations of NW Anatolia and their tectonic significance. *J. Geodyn.* 31, 243–271.
- Zhangdong, J., Jinchu, Z., Junfeng, J., Xinwei, L., Fuchun, L., 2001. Ore-forming fluid constraints on illite crystallinity (IC) at Dexing porphyry copper deposit, Jiangxi Province. *Sci. China Ser. D (Earth Sci.)* 44, 177–184.
- Zhangdong, J., Jinchu, Z., Junfeng, J., Xinwei, L., Fuchun, L., Xinwei, L., 2002. Two origins of illite at the Dexing porphyry Cu deposit, East China: Implications for ore-forming fluid constraint on illite crystallinity. *Clay. Clay Miner.* 50, 381–387.
- Zwingmann, H., Clauer, N., Gaupp, R., 1999. Structure related geochemical (REE) and isotopic (K-Ar, Rb-Sr, $\delta^{18}\text{O}$) characteristics of clay minerals from Rotliegend sandstone reservoirs (Permian, northern Germany). *Geochim. Cosmochim. Acta* 63, 2805–2823.

FIGURE CAPTIONS

Figure 1. (a) Location of the Biga Peninsula in relation to the boundaries of the major tectonic plates and Tethyan Eurasian Orogenic Metallogenic Belt (Jingwen et al., 2014), NAF: North Anatolian Fault, EAF: East Anatolian Fault, (b) Simplified regional geological map of the Biga Peninsula (modified from Siyako et al., 1989; Okay et al., 1990) and radiometric ages of volcanic and plutonic rocks and alteration related mineralizations (Ercan et al., 1995; Aldanmaz et al., 2000, Yigit, 2012).

Figure 2. The setting Koru and Tesbihdere deposit on the geologic cross-section (upper) and vertical distribution of lithology, ore and alteration zones in the Koru deposit (lower).

Figure 3 (a) Field observation of alunite-bearing argillized (kaolinitized) and sericitized pyroclastic host-rocks in the vicinity of Tahtalıkuyu sector of Koru deposit, (b) Transmitted polarized light microscope image of radially developed hydrothermal kaolinites in glassy ash tuff (KR-98, upper part of Tahtalıkuyu sector, Koru deposit), (c) Fine-grained illite/mica (sericite) and quartz occurrences within the volcanic matrix together with the ore minerals in glassy ash tuff (TK-64, uppermost levels of gallery from Tahtalıkuyu sector), (d) Silicified (Qtz) and sericitized pyroclastic host rocks, (e) Widely developed fine-grained micaceous (sericite) occurrences with quartz in glassy ash tuff (TD-171, gallery from Tesbihdere deposit), (f) Fe-(oxyhydroxide)oxidized, argillized (kaolinitized) and sericitized pyroclastic host rocks in Kumarlar deposit, (g) Widespread fine-grained illite/micas (sericites) on the glassy matrix and kaolinites within the pores, (h) Fine grained scaly illite/mica (sericite) occurrences within the glassy matrix and primary (or magmatic) corroded quartz.

Figure 4. SEM photomicrographs of alteration minerals. (a) Fine-grained ($\geq 2\mu\text{m}$) illites as curved flakes and (b) very fine-grained ($< 2\mu\text{m}$) neo-crystallized I-S (R3) as fiber-like plummy flakes on the illite flakes (TK-64, gallery of the Tahtalıkuyu sector, Koru deposit), (c) Subhedral and euhedral kaolinites as tightly packed booklets and euhedral prismatic alunite crystals within the pores and surrounding thread-like I-S (R1) occurrences (KR-98, upper part of the Tahtalıkuyu sector, Koru deposit), (d) Coarse-grained (up to $20\mu\text{m}$) illites or illitic mica flakes as subhedral to euhedral particles (TD-171, gallery from the Tesbihdere deposit), (e) Loosely stacked euhedral kaolinite booklets together with euhedral quartz crystals within the pores and (f) Coarse grained (up to $10\mu\text{m}$) subhedral illite plates or flakes (KU-5, Kumarlar deposit).

Figure 5. XRD patterns of bulk and clay fraction compositions, b cell dimensions and polytypes of pure and nearly pure illite samples.

Figure 6. Kaolinite + I-S assemblages of altered glassy ash tuff (TK-30, Tahtalıkuyu sector, Koru deposit) and analysis of peaks with NEWMOD calculated patterns and WINFIT peak decomposition on glycolated pattern.

Figure 7. Analysis of discrete illite and R3 I-S peaks with NEWMOD calculated patterns and WINFIT peak decomposition on the air-dried (a) and glycolated (b) patterns.

Figure 8. (a) Percentage of swelling (smectite) layers (%) and crystallite size (N, nm) estimations of illites in the KI vs Ir diagram (Eberl and Velde, 1989), (b) The distributions KI vs d_{060} data of illites. Temperature values were obtained from fluid inclusion data as presented in Table 2.

Figure 9. Distribution of major oxide composition (wt.%) of illites and volcanic host-rocks.

Figure 10. Distribution of trace element composition of illites with different grain sizes.

Figure 11. (a-b) Chondrite-normalized REE composition of illites, volcanic host rock and NASC, (c-d) Distributions of REE of illites from Tesbihdere and Kumarlar deposits with respect to the different grain sizes.

Figure 12. Distribution of oxygen and hydrogen isotope values of illites (Tesbihdere illites from Yilmaz et al., 2010). Fluid compositional areas, obtained from fluids trapped in hydrothermal quartz and barite crystals from Koru, Balcilar (Bozkaya and Gokce, 2007), Arapucandere (Bozkaya and Banks, 2015), Tesbihdere-Sahinli (Yilmaz et al., 2010), Ovacik-Narlica (Yilmaz, 2002) deposits, were also shown for comparison. MWL: Meteoric Water Line, MGW: Marmara Geothermal Water,

Figure 13. (a) Oxygen and (b) hydrogen isotopic change of waters in equilibrium with illites at decreasing temperatures. Quartz oxygen isotopic changes were also added for comparison.

Figure 14. Rb–Sr isochron diagrams for illites with different sizes from ore deposits (Different labels of the samples indicate different deposits; TK: Koru, KU: Kumarlar, TD: Tesbihdere).

Figure 15. Compilation of ages of plutonic and volcanic rocks and mineralization and/or alterations in the Biga Peninsula (modified from Yigit, 2012 and references therein) with the illitization age from this study.

TABLE CAPTIONS

Table 1. Bulk and clay-sized mineral composition of hydrothermally altered volcanic and pyroclastic rocks.

Table 2. Crystal chemical data of illites.

Table 3. Major oxide composition of illites and volcanic host-rocks.

Table 4. Trace and REE contents (ppm) of illite samples with different grain sizes.

Table 5. Oxygen and hydrogen isotope composition of illites and quartz from the Koru and Kumarlar deposits.

Table 6. Rb-Sr isotope data for different sized illites from the studied ore deposits.

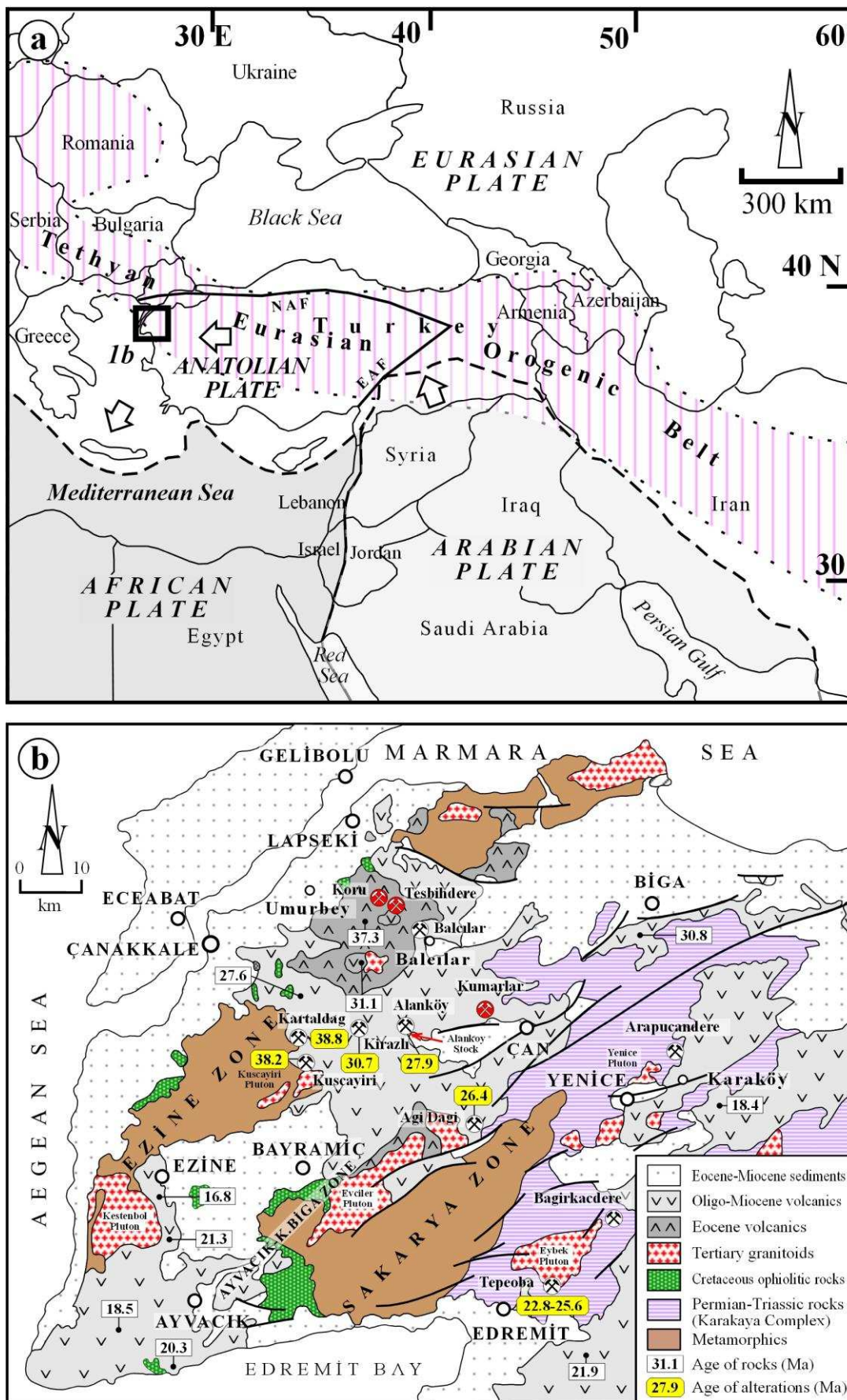


Figure 1

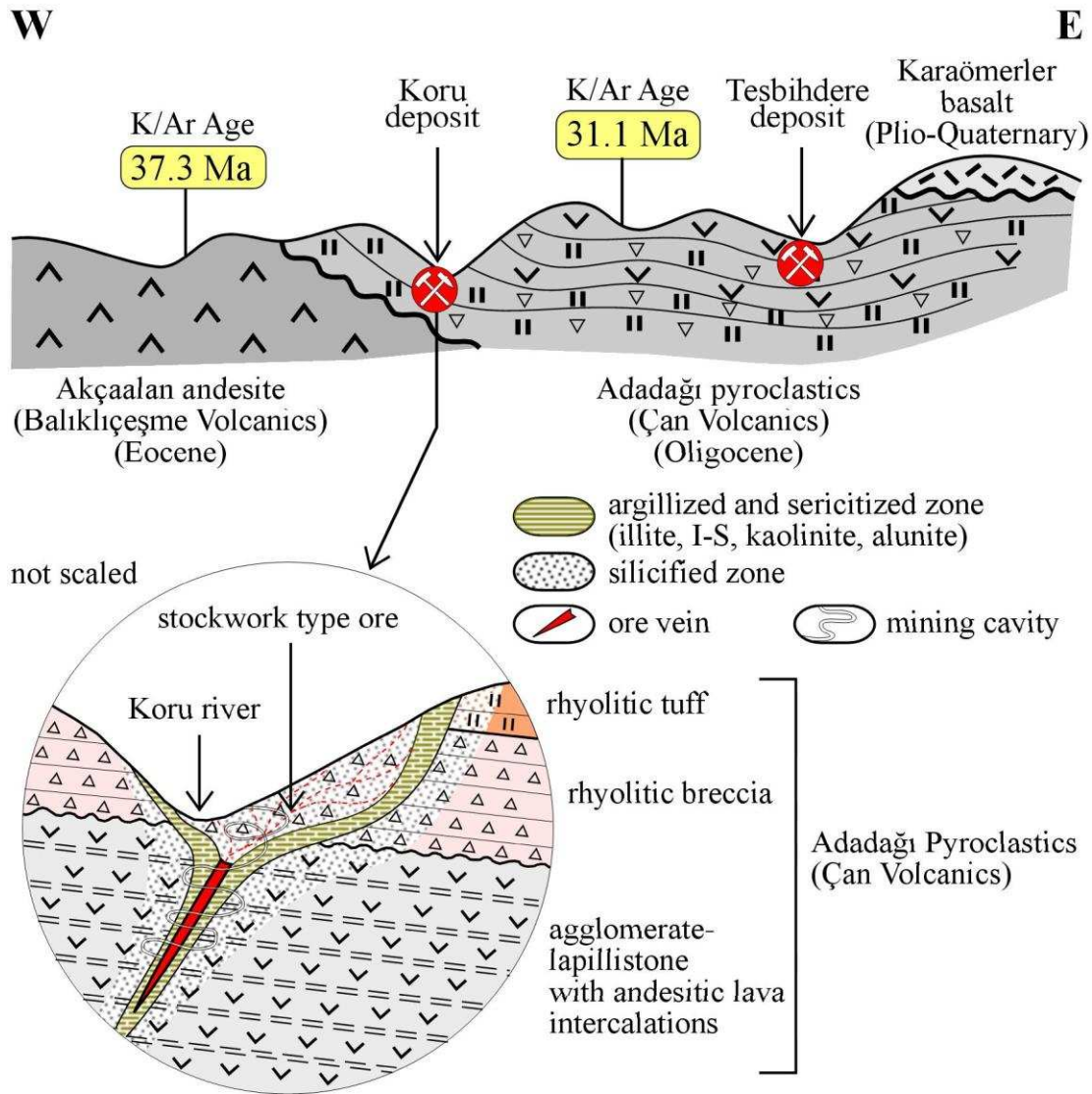


Figure 2

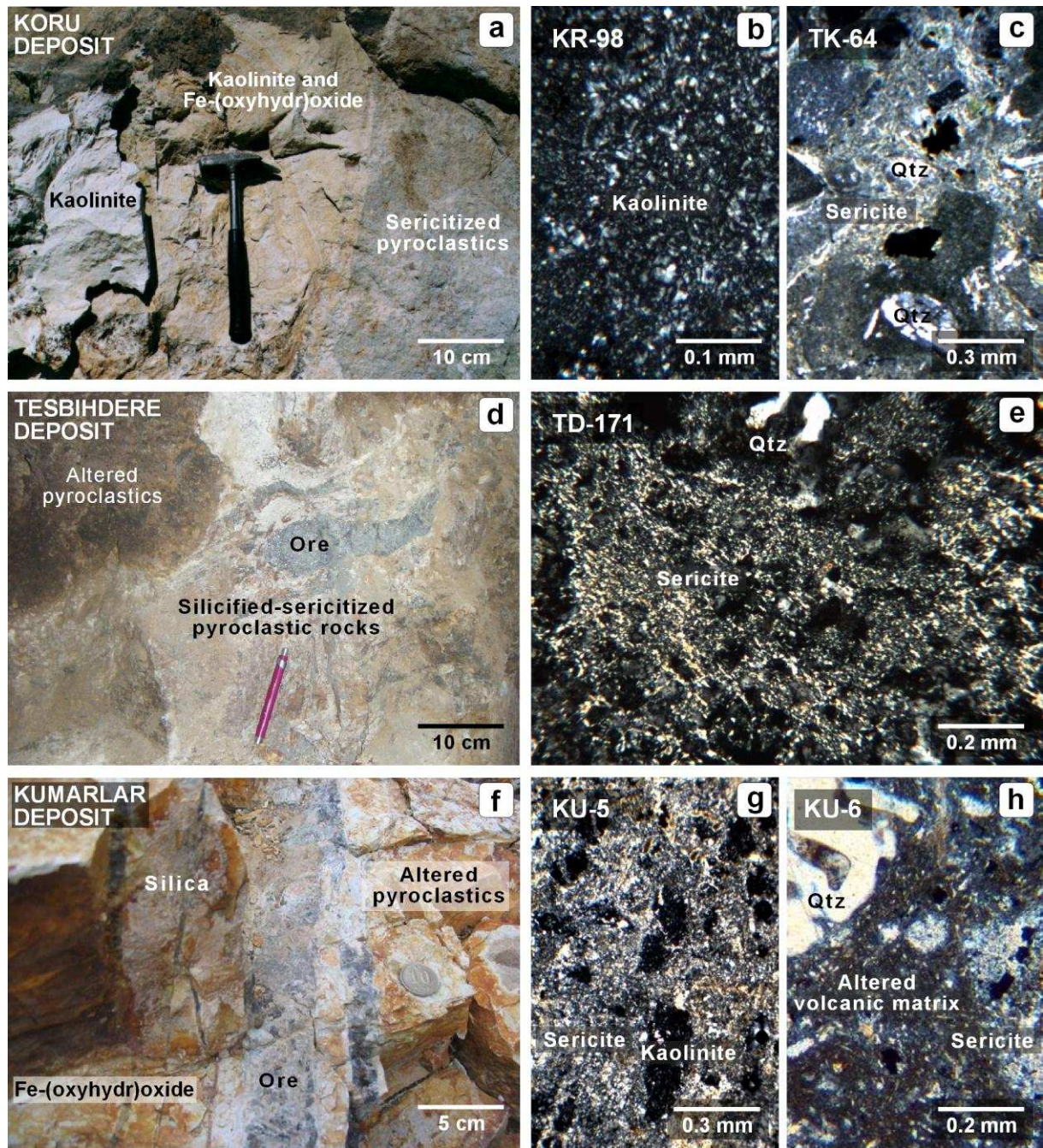


Figure 3

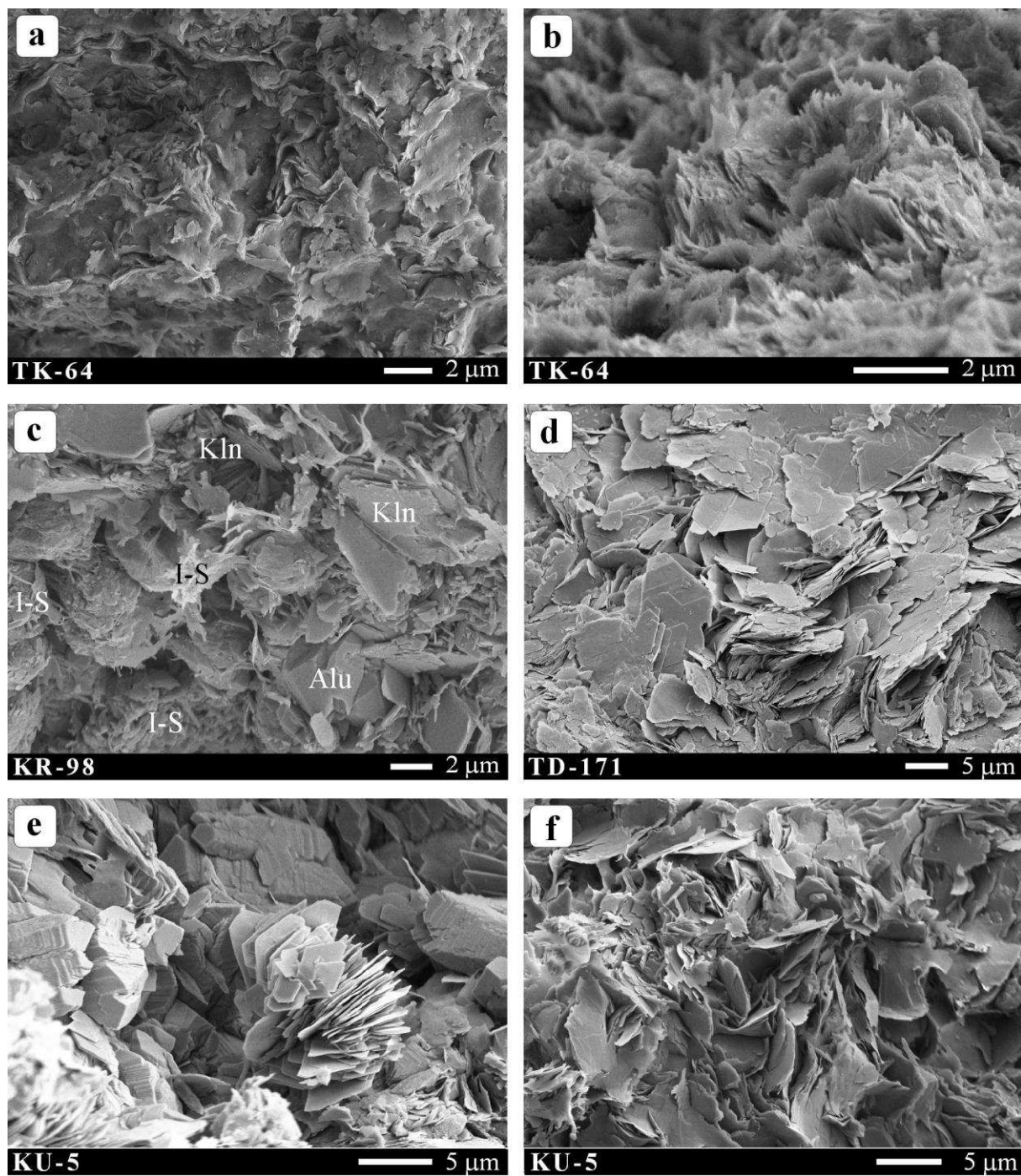


Figure 4

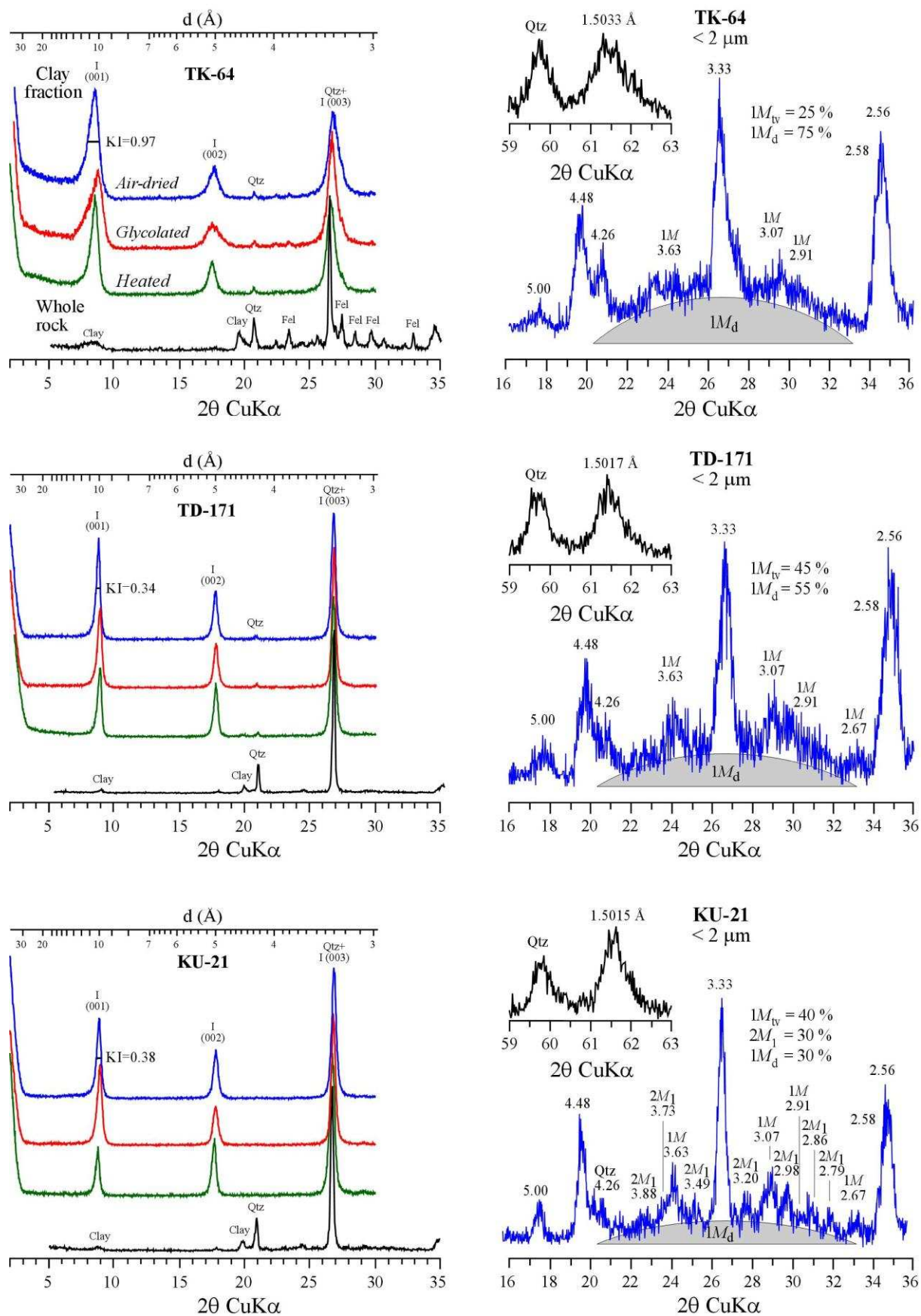


Figure 5

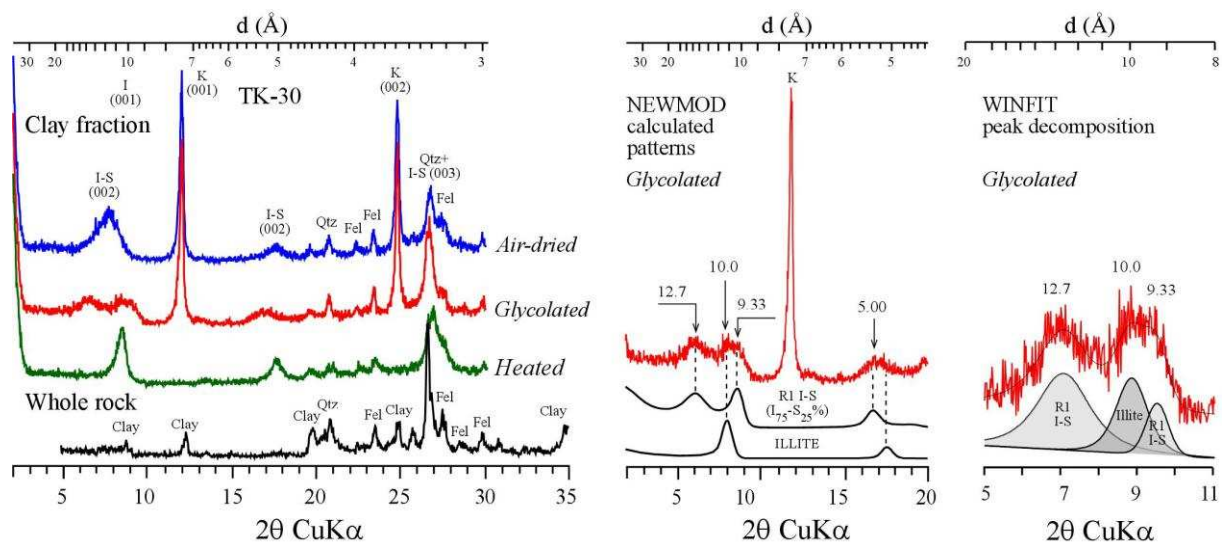


Figure 6

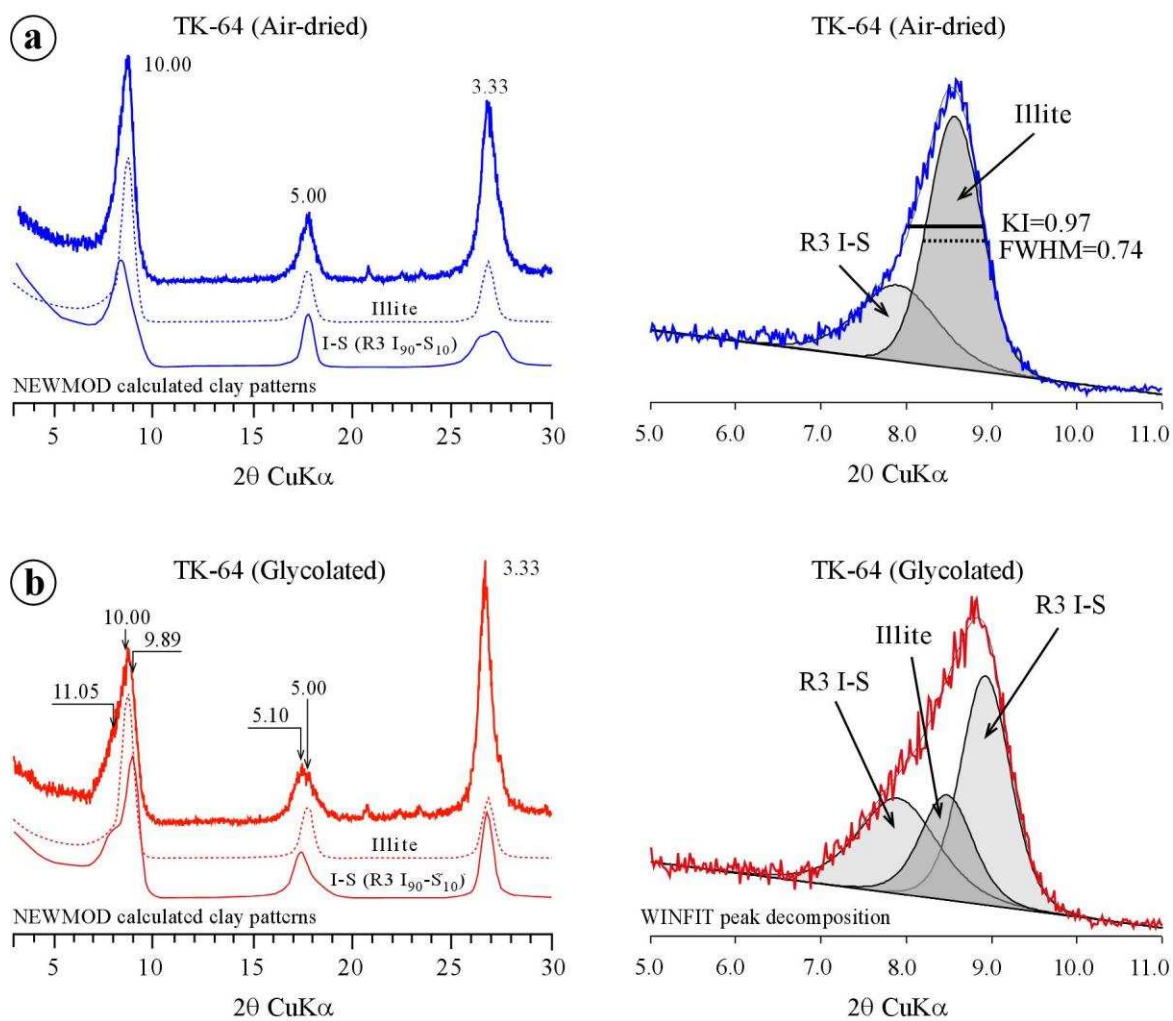


Figure 7

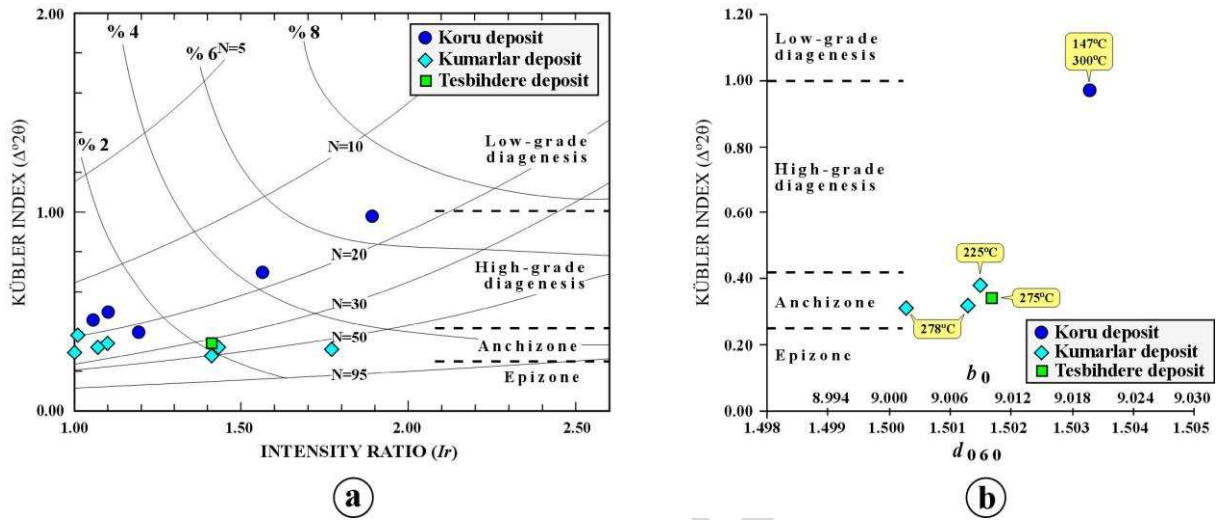


Figure 8

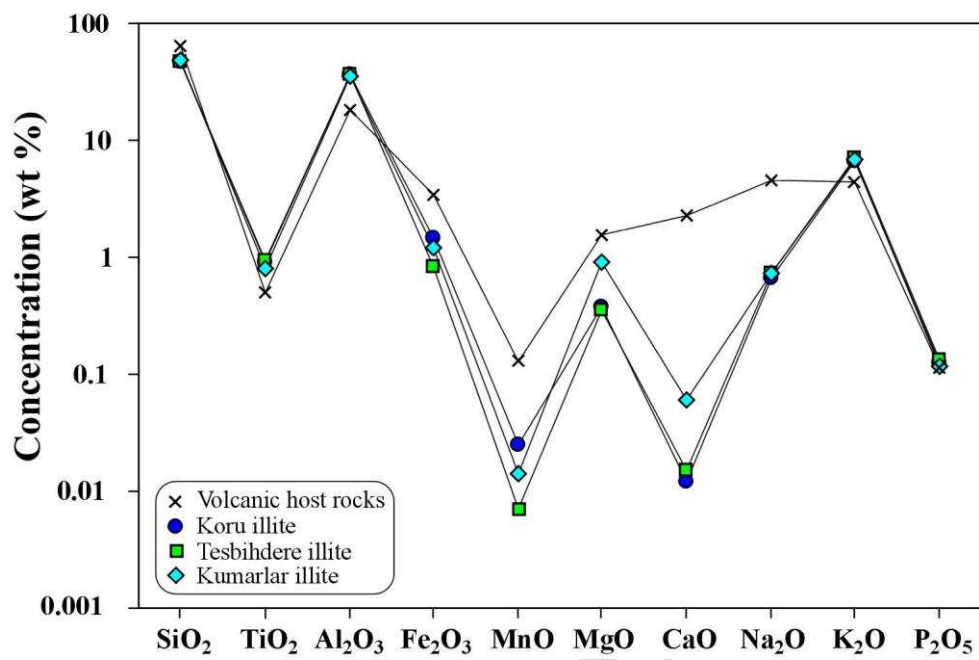


Figure 9

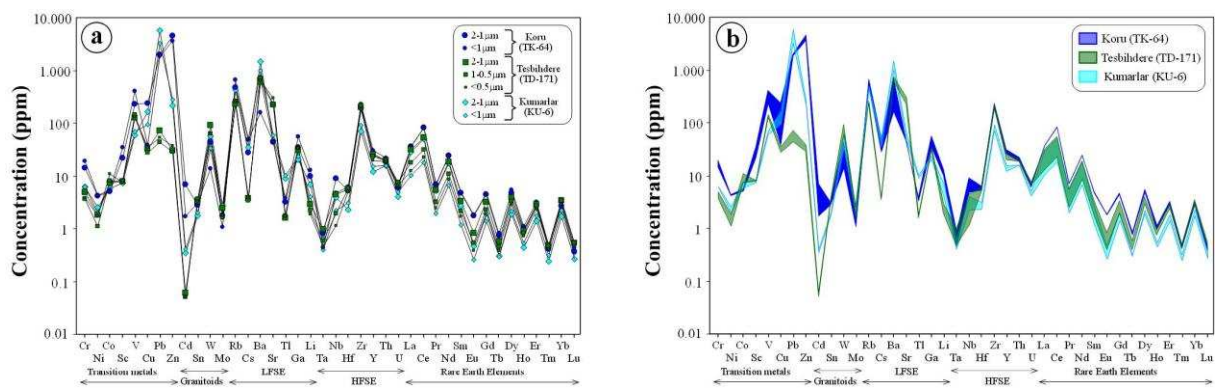


Figure 10

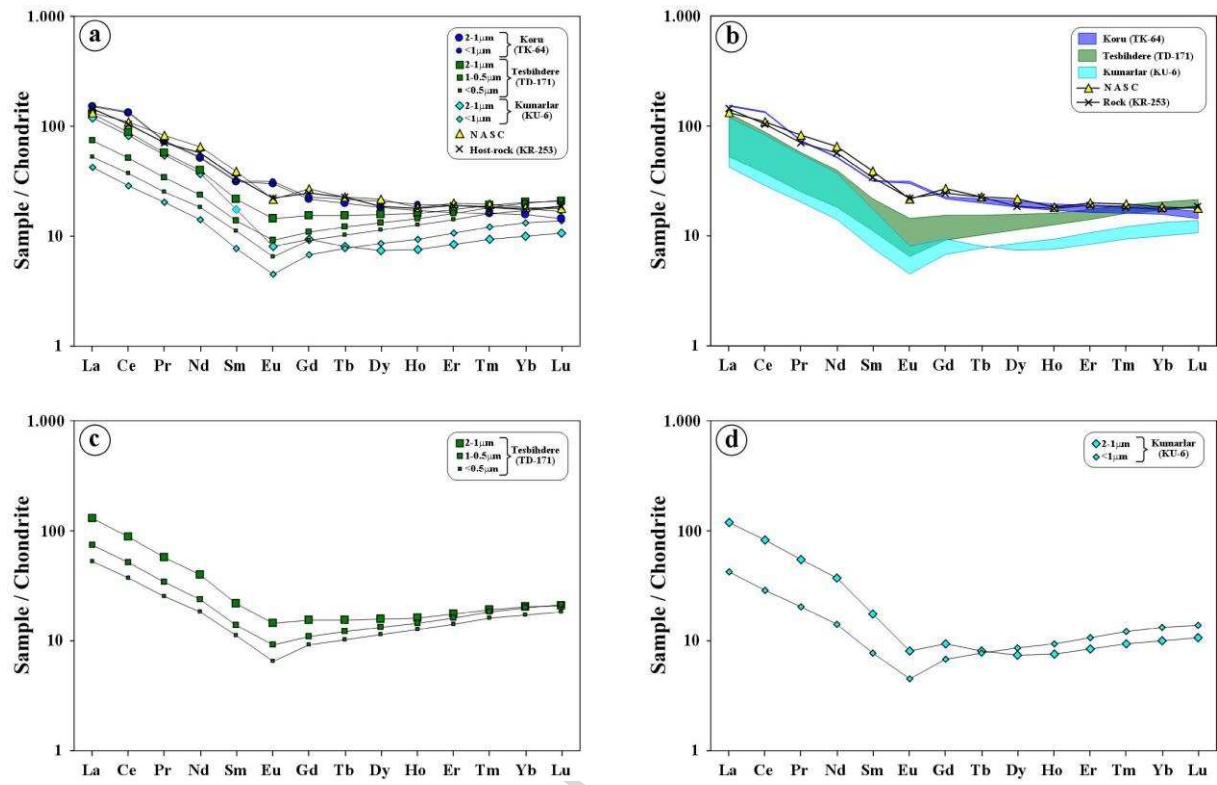


Figure 11

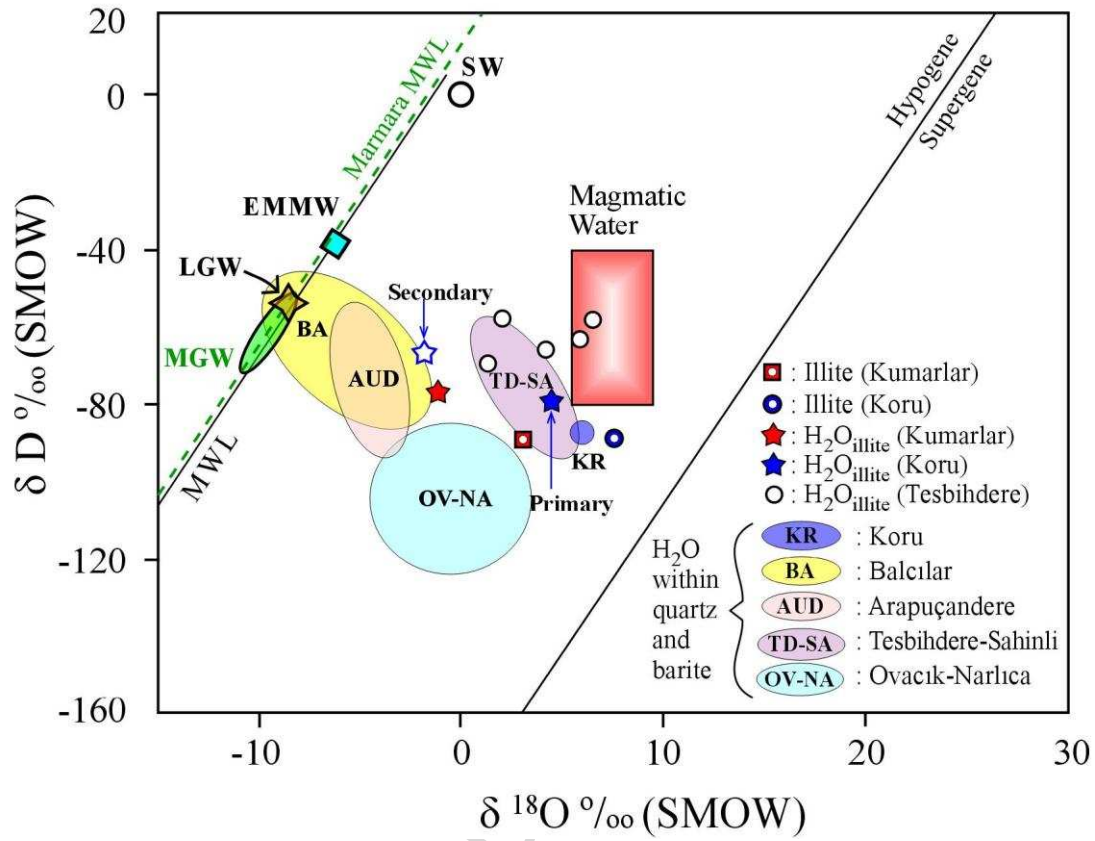


Figure 12

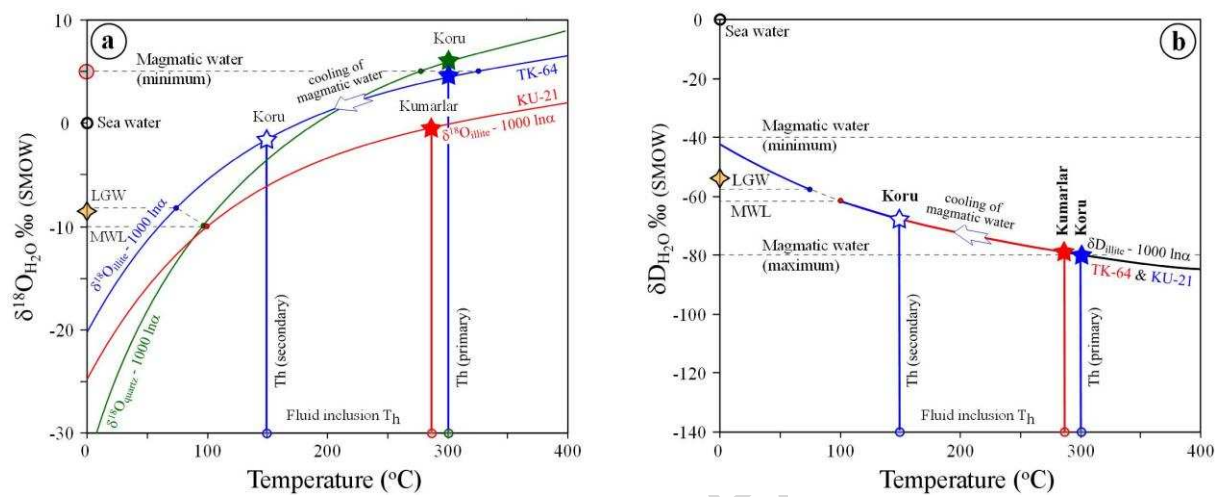


Figure 13

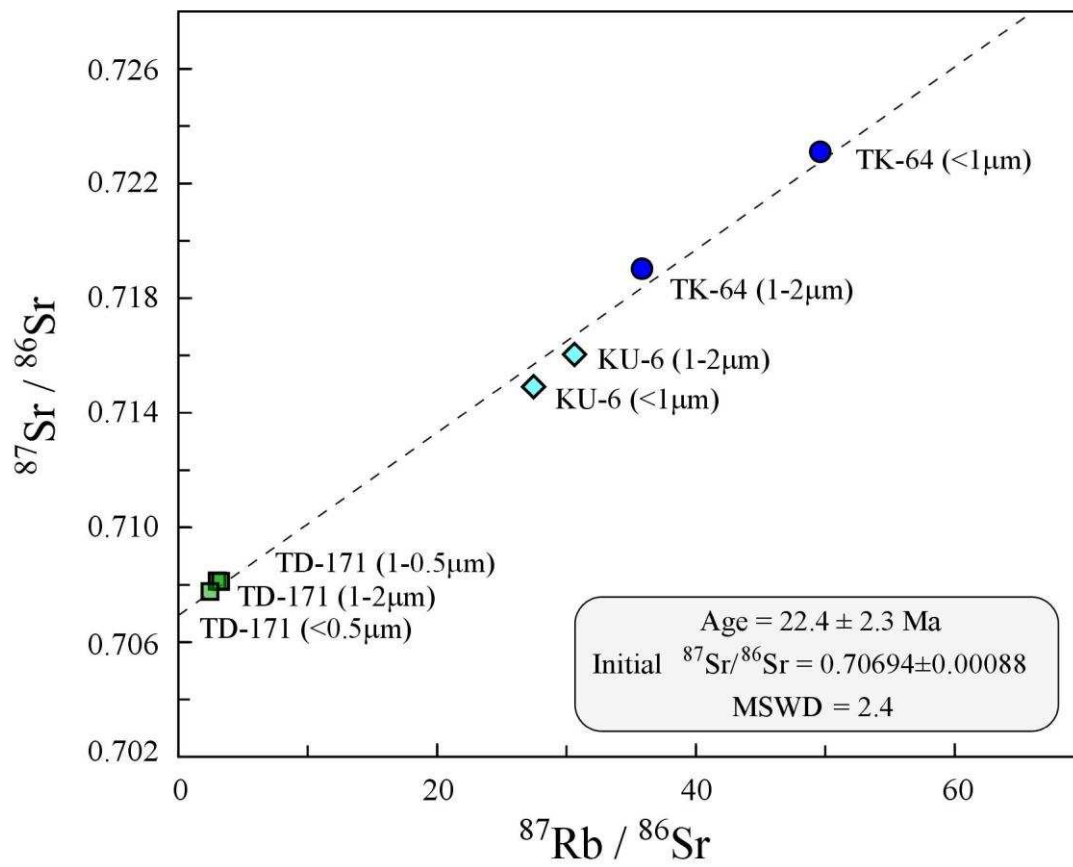


Figure 14

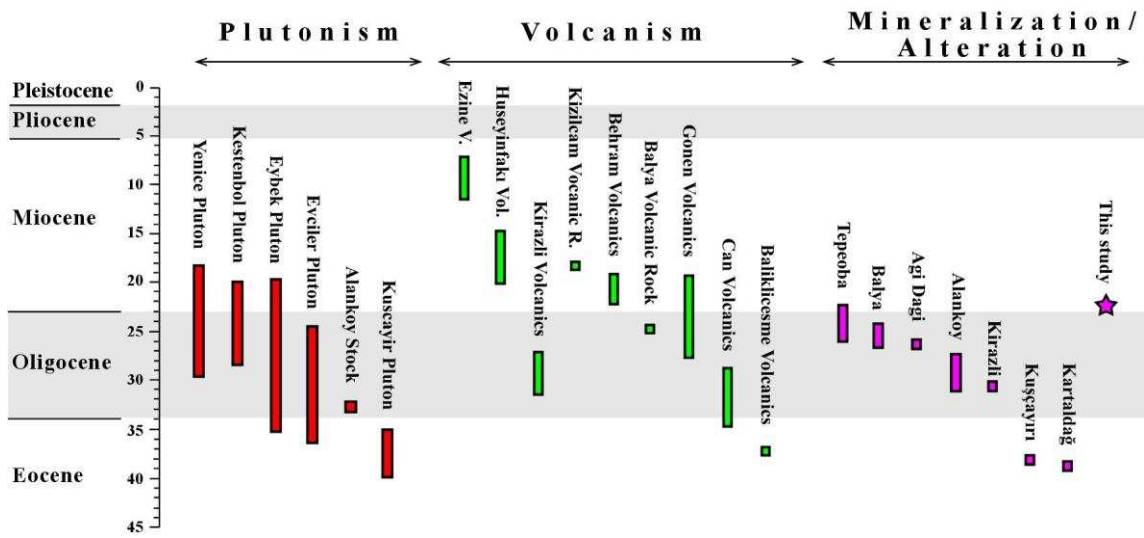
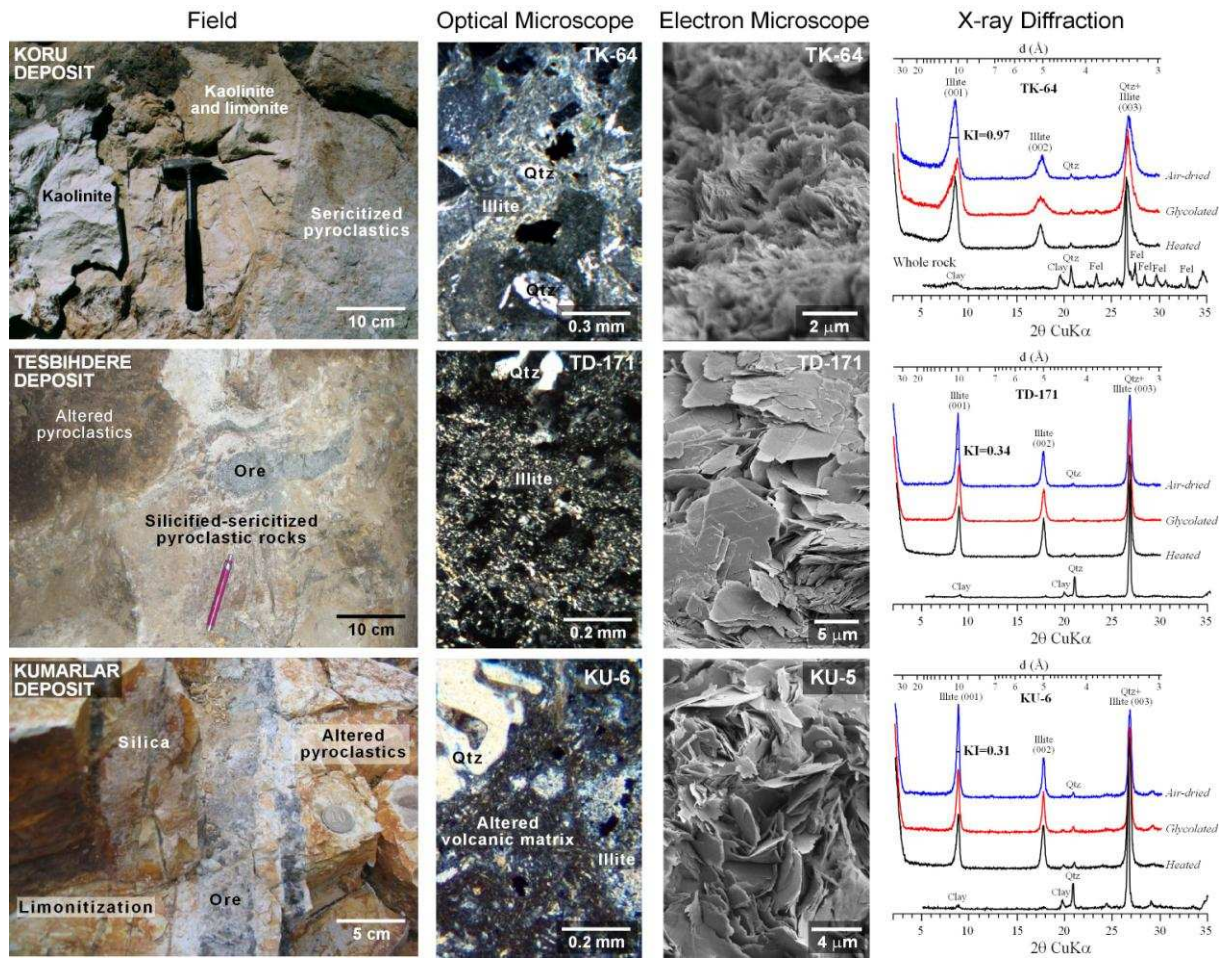


Figure 15



Graphical abstract

Table 1

Sample	Lithology	Whole Rock					Clay Fraction					
		Quartz	Feldspar	Clay	Zeolite	Alunite	Illite	Chlorite	Kaolinite	I-S	C-S	Smectite
Koru deposit												
EK-25	Lithic tuff	+	++	++			++	+++				
TK-27	Lithic tuff	+++	+	+			+		++	++		
TK-64	Glassy tuff	+	+	+++			+			++++		
TK-98	Glassy tuff	++		+++		±			+++++	±		
TK-99	Lithic tuff	+++		++					+++++			
TK-100	Glassy tuff	++	++	+					+++++			
TK-101	Glassy tuff	++	++	+			+		++++			
TK-102	Lithic tuff	++	+	+	+		++		++	+		
TK-122	Glassy tuff	+++	+	+			+++		++			
TK-129	Glassy tuff	+++	+	+			+++++					
TK-143	Glassy tuff	+	+++	+			+		+	+		++
KR-186	Glassy tuff	+	+++	+			+++	++				
KR-222	Glassy tuff	+++	++						+++++			
KR-244	Lithic tuff	+	+++	+				+++++				
KR-264	Glassy tuff	+++	+	+								
KR-275	Glassy tuff	+	+	+++			++	±				+++
Tesbihdere deposit												
TD-171	Altered tuff	+++		++			+++++					
Kumarlar deposit												
KU-4	Glassy tuff	++	+	++			++++		+			
KU-5	Glassy tuff	+++		++			+++		++			±
KU-6	Glassy tuff	+++		++			+++++		±			
KU-15	Glassy tuff	++	+	++			+++		+			+
KU-20	Glassy tuff	+++		++			+++++					
KU-21	Glassy tuff	+++		++			+++++					
KU-35	Glassy tuff	++	++	+			+++		+			+
KU-41	Andesite	+	+++	+			++	++			+	

I-S: Mixed-layered illite-smectite, C-S=Mixed-layered chlorite-smectite, + : 20%, ± : rare

Table 2

	I002)/(001)	Ir (*)	KI	d ₀₆₀	2M ₁	1M	1M _d	Th (°C)(**)
Koru deposit								
TK-64	0.29	1.89	0.97	1.5033	–	25	75	P: 300, S: 147
KR-186	0.54	1.19	0.39					
KR-264	0.41	1.10	0.49					
KR-299	0.57	1.56	0.69					
EK-25	0.25	1.05	0.45					
Tesbihdere deposit								
TD-171	0.47	1.41	0.34	1.5017	–	45	55	P: 275
Kumarlar deposit								
KU-4	0.44	1.10	0.34					
KU-5	0.63	1.00	0.29					
KU-6	0.43	1.77	0.31	1.5003	–	50	50	P: 225
KU-15	0.50	1.09	0.32					
KU-20	0.51	1.43	0.32	1.5013	30	35	35	P: 278
KU-21	0.60	1.01	0.38	1.5015	30	40	30	P: 278
KU-35	0.61	1.41	0.28					

(*) Intensity Ratio Ir = [(I001)/(003)_{air-dried} / ((I001)/(003)_{glycolated})] (Środoń, 1984).

(**) Mean °C values obtained from fluid inclusion data, P: Primary inclusions, S: Secondary inclusions

Table 3

% Oxide	Illite					Rhyodacite	Dacite	
	KU-6	KU-20	KU-21	TK-64	TD-171	Ulubey(*)	KR-322	KR-247
SiO ₂	48.02	48.28	48.83	46.85	47.61	49.96	62.88	64.08
TiO ₂	0.943	0.498	0.953	0.912	0.933	0.22	0.56	0.45
Al ₂ O ₃	36.26	32.74	35.38	35.95	36.21	32.14	18.42	18.03
Fe ₂ O ₃ (t)	0.69	2.42	0.58	1.47	0.83	0.84	3.56	3.22
MnO	0.004	0.017	0.022	0.025	0.007	n.a.	0.08	0.18
MgO	0.38	1.96	0.38	0.38	0.36	1.16	1.88	1.26
CaO	0.02	0.15	0.02	0.01	0.02	0.82	3.27	1.33
Na ₂ O	0.72	0.94	0.55	0.65	0.72	0.54	3.57	5.46
K ₂ O	6.86	6.71	6.84	6.64	7.18	7.50	4.48	4.39
P ₂ O ₅	0.12	0.14	0.10	0.13	0.13	n.a.	0.13	0.10
LOI	6.25	6.61	6.84	7.05	6.16	6.36	2.15	2.19
Total	100.25	100.46	100.49	100.05	100.16	99.54	100.90	100.69
Si	3.14	3.20	3.20	3.11	3.13	3.31		
Al	0.86	0.80	0.80	0.89	0.87	0.69		
TC	0.86	0.80	0.80	0.89	0.87	0.69		
Al	1.94	1.75	1.93	1.92	1.93	1.82		
Ti	0.05	0.02	0.05	0.05	0.05	0.01		
Fe ³⁺	0.03	0.12	0.03	0.07	0.04	0.04		
Mg	0.04	0.19	0.04	0.04	0.04	0.11		
OC	0.19	0.10	0.15	0.21	0.18	0.13		
TOC	2.06	2.09	2.05	2.08	2.05	1.99		
Ca	0.00	0.01	0.00	0.00	0.00	0.06		
Na	0.09	0.12	0.07	0.08	0.09	0.07		
K	0.57	0.57	0.57	0.56	0.60	0.63		
ILC	0.67	0.71	0.64	0.65	0.70	0.82		
TLC	0.67	0.71	0.64	0.65	0.70	0.82		

Fe₂O₃(t): Total iron, LOI: Loss on ignition, TC: Tetrahedral charge, TOC: Total octahedral cation, OC: Octahedral charge, ILC: Interlayer charge, TLC: Total layer charge, n.a.: not analyzed

(*) Hydrothermal illite from NE Pontides, Turkey (Celik et al., 1999).

Table 4

	KR-253	KU-6		TK-64		TD-171		
	Whole Rock	1-2 μ m	<1 μ m	1-2 μ m	<1 μ m	1-2 μ m	0.5-1 μ m	<0.5 μ m
Ti	3957.0	863.48	595.53	4447.19	2165.14	1158.09	811.52	637.94
Ca	1343.6	1341.02	1562.13	1952.37	2383.69	760.50	635.94	937.76
P	698.0	628.80	718.97	515.99	769.77	320.67	318.67	484.93
Cr	<20.0	6.18	6.20	14.20	18.97	4.92	3.61	3.94
Ni	<20.0	2.50	1.99	4.20	4.25	1.83	1.12	1.75
Co	<10.0	5.73	7.52	5.02	5.47	7.24	8.18	10.82
Sc	n.a.	7.21	8.41	21.87	34.28	7.71	7.99	7.44
V	78.00	59.56	69.25	228.05	405.11	126.55	142.67	129.38
Cu	<10.0	164.17	93.48	234.31	38.70	32.66	27.90	34.94
Pb	12.0	5609.93	3218.25	1967.05	1840.18	71.29	43.07	52.91
Zn	153.0	216.83	279.38	4489.58	3595.22	30.22	28.38	37.04
Cd	n.a.	0.35	0.41	6.80	1.72	0.06	0.05	0.05
Sn	2.0	1.76	2.01	2.79	3.04	3.35	3.63	3.26
W	195	56.19	33.55	43.56	13.57	89.58	63.15	61.38
Mo	<2.0	2.68	1.66	1.78	1.06	2.46	1.62	1.74
Rb	98.0	427.47	486.20	466.79	666.43	231.12	261.99	249.30
Cs	3.9	34.16	49.79	27.78	47.90	3.73	3.42	3.94
Ba	1170.0	1475.21	999.67	698.76	156.55	601.38	707.19	644.24
Sr	225	46.53	58.74	43.25	44.28	222.81	232.10	296.28
Tl	0.11	8.81	10.22	3.24	3.76	1.57	1.77	1.72
Ga	16	20.37	23.64	34.54	55.80	30.69	33.17	32.99
Li	n.a.	6.83	4.05	9.82	12.86	2.88	2.20	1.88
Ta	0.86	0.62	0.39	0.81	0.44	0.96	0.58	0.47
Nb	10.9	3.90	2.22	8.93	4.76	4.46	1.92	1.13
Hf	5.5	2.30	3.04	5.19	6.25	5.58	5.85	5.01
Zr	213	69.19	91.19	194.10	225.78	202.00	213.40	180.14
Y	33.40	11.97	15.06	26.04	30.47	25.88	23.13	19.74
Th	14.80	15.66	15.76	18.61	21.78	19.78	19.97	18.46
U	3.49	3.99	4.94	5.95	6.73	6.91	7.52	6.54
La	34.20	27.96	10.03	35.65	36.38	30.93	17.60	12.34
Ce	63.30	50.58	17.62	81.00	82.95	53.52	31.10	22.82
Pr	6.80	5.22	1.93	6.91	7.03	5.46	3.22	2.42
Nd	26.60	17.26	6.57	23.97	24.30	18.34	10.94	8.48
Sm	5.19	2.67	1.19	4.75	4.87	3.30	2.12	1.69
Eu	1.28	0.47	0.26	1.75	1.83	0.83	0.53	0.38
Gd	5.11	1.93	1.40	4.44	4.64	3.17	2.26	1.90
Tb	0.85	0.30	0.29	0.75	0.82	0.57	0.45	0.38
Dy	4.74	1.87	2.17	4.68	5.33	3.95	3.34	2.88
Ho	1.02	0.43	0.53	0.97	1.11	0.91	0.81	0.71
Er	3.14	1.38	1.75	2.70	3.15	2.87	2.68	2.36
Tm	0.47	0.24	0.31	0.41	0.48	0.49	0.47	0.41
Yb	2.97	1.71	2.25	2.66	3.07	3.43	3.40	2.92
Lu	0.47	0.27	0.35	0.37	0.43	0.53	0.54	0.46

Table 5

Sample No	Deposit	Mineral	$\delta^{18}\text{O}$ ‰ SMOW	δD ‰ SMOW
TK-64	Koru	Illite+I-S	7.6	-88.8
KU-21	Kumarlar	Illite	3.1	-89.1
TK-53-1	Koru	Quartz	14.2	-88.0

ACCEPTED MANUSCRIPT

Table 6

Sample	Size fraction (μm)	Rb (ppm)	Sr (ppm)	$^{87}\text{Rb}/^{86}\text{Sr}$	$^{87}\text{Sr}/^{86}\text{Sr} \pm 2\sigma$
KU-6	2-1	691.8	65.41	30.62	0.716036 \pm 7
KU-6	<1	783.3	82.56	27.46	0.714912 \pm 7
TK-64	2-1	751.7	60.75	35.83	0.719018 \pm 9
TK-64	< 1	1066	62.32	49.55	0.723092 \pm 7
TD-171	2-1	323.8	312.5	2.997	0.708129 \pm 8
TD-171	1-0.5	365.8	325.3	3.254	0.708123 \pm 5
TD-171	<0.5	348.8	415.2	2.430	0.707770 \pm 6

Highlights

- Illite isotopic data provides a direct link to the hydrothermal fluids forming the mineralization.
- δD & $\delta^{18}\text{O}$ isotopic data of illites are comparable to fluid inclusion isotopic data in quartz.
- δD & $\delta^{18}\text{O}$ data between the MWL and magmatic box are due to WRI at lower temperature, not necessarily fluid mixing.
- The Rb–Sr age of illites indicate the heat and source of the hydrothermal fluids is primarily related to plutonic intrusions.
- Illites in this study have similar properties to hydrothermal illites from several deposits around the world.