

This is a repository copy of *Phylogenetic analyses suggest that diversification and body size evolution are independent in insects*.

White Rose Research Online URL for this paper:

<https://eprints.whiterose.ac.uk/92915/>

Version: Accepted Version

Article:

Rainford, James Lewis, Hofreiter, Michael Stefan orcid.org/0000-0003-0441-4705 and Mayhew, Peter John orcid.org/0000-0002-7346-6560 (2016) Phylogenetic analyses suggest that diversification and body size evolution are independent in insects. *Bmc evolutionary biology*. 8. ISSN 1471-2148

<https://doi.org/10.1186/s12862-015-0570-3>

Reuse

Items deposited in White Rose Research Online are protected by copyright, with all rights reserved unless indicated otherwise. They may be downloaded and/or printed for private study, or other acts as permitted by national copyright laws. The publisher or other rights holders may allow further reproduction and re-use of the full text version. This is indicated by the licence information on the White Rose Research Online record for the item.

Takedown

If you consider content in White Rose Research Online to be in breach of UK law, please notify us by emailing eprints@whiterose.ac.uk including the URL of the record and the reason for the withdrawal request.

BMC Evolutionary Biology

Phylogenetic analyses suggest that diversification and body size evolution are independent in insects --Manuscript Draft--

Manuscript Number:	EVOB-D-15-00334R2	
Full Title:	Phylogenetic analyses suggest that diversification and body size evolution are independent in insects	
Article Type:	Research article	
Section/Category:	Evolutionary Ecology and Behaviour	
Funding Information:	Natural Environment Research Council (GB) (NE/J500197/1)	Dr. James Rainford
Abstract:	<p>Background Skewed body size distributions and the high relative richness of small-bodied taxa are a fundamental property of a wide range of animal clades. The evolutionary processes responsible for generating these distributions are well described in vertebrate model systems but have yet to be explored in detail for other major terrestrial clades. In this study, we explore the macro-evolutionary patterns of body size variation across families of Hexapoda (insects and their close relatives), using recent advances in phylogenetic understanding, with an aim to investigate the link between size and diversity within this ancient and highly diverse lineage.</p> <p>Results The maximum, minimum, and mean-log body lengths of hexapod families are all approximately log-normally distributed, consistent with previous studies at lower taxonomic levels, and contrasting with skewed distributions typical of vertebrate groups. After taking phylogeny and within-tip variation into account, we find no evidence for a negative relationship between diversification rate and body size, suggesting decoupling of the forces controlling these two traits. Likelihood-based modeling of the log-mean body size identifies distinct processes operating within Holometabola and Diptera compared with other hexapod groups, consistent with accelerating rates of size evolution within these clades, while as a whole, hexapod body size evolution is found to be dominated by neutral processes including significant phylogenetic conservatism.</p> <p>Conclusions Based on our findings we suggest that the use of models derived from well-studied but atypical clades, such as vertebrates may lead to misleading conclusions when applied to other major terrestrial lineages. Our results indicate that within hexapods, and within the limits of current systematic and phylogenetic knowledge, insect diversification is generally unfettered by size-biased macro-evolutionary processes, and that these processes over large timescales tend to converge on apparently neutral evolutionary processes. We also identify limitations on available data within the clade and modeling approaches for the resolution of trees of higher taxa, the resolution of which may collectively enhance our understanding of this key component of terrestrial ecosystems.</p>	
Corresponding Author:	Peter J. Mayhew University of York York, UNITED KINGDOM	
Corresponding Author Secondary Information:		
Corresponding Author's Institution:	University of York	
Corresponding Author's Secondary Institution:		
First Author:	James Rainford, PhD	
First Author Secondary Information:		

Order of Authors:	James Rainford, PhD
	Michael Hofreiter, PhD
	Peter John Mayhew, PhD
Order of Authors Secondary Information:	
Response to Reviewers:	<p>I attach the revised text with minor changes made.</p> <p>Below are responses to the referee and editorial comments:</p> <p>Reviewer reports:</p> <p>I have read the manuscript and the responses to Reviewer comments, and I am satisfied that all questions raised were appropriately dealt with. I only found one small typo in the text: Page 21, line 9. The word “use” should be removed or the word “for” should be added back as in the previous version.</p> <p>Response: I cannot find this error: the word “used” appears in the specified place, but is grammatical, and the word “for” would not make sense there. I cannot find any other place where the word “for” has been deleted from the previous version. I have therefore made no change.</p> <p>Editorial requests:</p> <p>1. Please can you upload a clean version of the manuscript without highlighting or tracked changes and remove the tracked changes versions from the inventory.</p> <p>Response: Done</p> <p>2. If possible, please can you provide the doi or accession for you data deposition in the Dryad repository. If you are unable to do this currently, please make sure you revise your proofs following manuscript acceptance.</p> <p>Response: We have modified this sentence as the data are all in Table S1.</p> <p>3. In the main manuscript text after Reference, please can you describe the contents of your supplementary/additional file. Please note that this description should be detailed enough to allow readers to determine exactly what data/information can be found in this file.</p> <p>Response: Done</p> <p>4. Please can you confirm in the methods section, was all data taken from other source or did you conduct any work on insects yourself. If the latter is true, please clarify if you obtained any field work or other special permissions to work with them.</p> <p>Response: all data was taken from other published sources. This is now confirmed in the methods; second last sentence, page 20.</p> <p>5. Availability of Supporting Data section:</p> <p>To help facilitate the earning of academic credit for data sharing and publication we recommend that published datasets referred to in submitted manuscripts be cited in reference lists. Datasets supporting the results reported in submitted manuscripts should be included in an 'Availability of supporting data' article section and cited in the reference list.</p> <p>Response: the sources of data are now cited in the main reference list, and direction to the dataset in Table S1 is now made in the 'Availability of supporting data' section.</p> <p>Ethics: If your study involves humans, human data or animals, then your article should contain</p>

an ethics statement which includes the name of the committee that approved your study.

If ethics was not required for your study, then this should be clearly stated and a rationale provided.

Response: Ethical approval is not required because we have only analysed existing data derived from publically available resources.

Consent:

If your article is a prospective study involving human participants then your article should include a statement detailing consent for participation.

If individual clinical data is presented in your article, then you must clarify whether consent for publication of these data was obtained.

Response: N/A

Availability of supporting data:

BioMed Central strongly encourages all data sets on which the conclusions of the paper rely be either deposited in publicly available repositories (where available and appropriate) or presented in the main papers or additional supporting files, in machine-readable format whenever possible. Authors must include an Availability of Data and Materials section in their article detailing where the data supporting their findings can be found. The Accession Numbers of any nucleic acid sequences, protein sequences or atomic coordinates cited in the manuscript must be provided and include the corresponding database name.

Response: see above.

Authors Contributions:

Your 'Authors Contributions' section must detail the individual contribution for each individual author listed on your manuscript.

Response: Authors contributions already included

[Click here to view linked References](#)

1 **Phylogenetic analyses suggest that diversification and body**
2
3 **size evolution are independent in insects**
4
5

6 **Running Title:** Decoupling of body length and diversity in insects
7

8 **Authors:** James L. Rainford¹, Michael Hofreiter² and Peter J. Mayhew^{1*}
9

10 **Affiliations:**
11

12 ¹Department of Biology, University of York, Heslington, York YO10 5DD,
13
14 UK.
15
16

17 ²Institute for Biochemistry and Biology, Faculty of Mathematics and Natural
18 Sciences, University of Potsdam, Karl-Liebknecht-Str. 24-25, 14476 Potsdam,
19 Germany
20
21
22
23
24
25

26 **Emails:**
27

28 jl516@york.ac.uk;
29

30 michael.hofreiter@uni-potsdam.de;
31

32 peter.mayhew@york.ac.uk; *
33
34
35
36
37
38
39
40
41
42
43
44
45
46
47
48
49
50
51
52
53
54
55
56
57
58
59
60
61
62
63
64
65

Abstract

Background

Skewed body size distributions and the high relative richness of small-bodied taxa are a fundamental property of a wide range of animal clades. The evolutionary processes responsible for generating these distributions are well described in vertebrate model systems but have yet to be explored in detail for other major terrestrial clades. In this study, we explore the macro-evolutionary patterns of body size variation across families of Hexapoda (insects and their close relatives), using recent advances in phylogenetic understanding, with an aim to investigate the link between size and diversity within this ancient and highly diverse lineage.

Results

The maximum, minimum, and mean-log body lengths of hexapod families are all approximately log-normally distributed, consistent with previous studies at lower taxonomic levels, and contrasting with skewed distributions typical of vertebrate groups. After taking phylogeny and within-tip variation into account, we find no evidence for a negative relationship between diversification rate and body size, suggesting decoupling of the forces controlling these two traits. Likelihood-based modeling of the log-mean body size identifies distinct processes operating within Holometabola and Diptera compared with other hexapod groups, consistent with accelerating rates of size evolution within these clades, while as a whole, hexapod body size evolution is found to be dominated by neutral processes including significant phylogenetic conservatism.

Conclusions

Based on our findings we suggest that the use of models derived from well-studied but atypical clades, such as vertebrates may lead to misleading conclusions when applied to other major terrestrial lineages. Our results indicate that within hexapods, and within the limits of current systematic and phylogenetic knowledge, insect diversification is generally unfettered by size-biased macro-evolutionary processes, and that these processes over large timescales tend to converge on apparently neutral evolutionary processes. We also identify limitations on available data within the clade and modeling approaches for the resolution of trees of higher taxa, the resolution of which may collectively enhance our understanding of this key component of terrestrial ecosystems.

Keywords: Body size, Diversification, Hexapoda, Insects, Phylogeny

Background

One of the most prevalent patterns observed in natural systems is the overrepresentation of small-bodied taxa [1]. The observation of right skew in body size distributions, following transformation to the log scale, has been made for a variety of vertebrate clades [2–4] and provides the basis for a variety of size-selective diversification mechanisms that have been previously proposed as general models for the macroevolution of animals (reviewed in [1, 4]). Despite widespread interest in these patterns, comparatively little effort has been spent in examining whether such relationships are truly universal and there is limited evidence for their presence across major non-vertebrate lineages [5–7]. In this study, we explore the relationship

1 between species richness and body size, and the universality of size biased
2 diversification, in one of the largest terrestrial invertebrate clades, the six-legged
3 arthropods or Hexapoda.
4
5

6
7 Interest in body size distributions relates to the importance of size in
8 impacting on an organism's ecology and thus potential evolution and diversification.
9
10 Body size determines the scale of an organism's interactions within the fractal
11 structure of natural environments [8, 9], the relative strength of gravitational (i.e.
12 body weight) vs. viscous and inertial forces [10] and, via surface area to volume ratios
13 and the scaling of exchange networks, controls the rates of metabolic processes such
14 as temperature response [11] and gas diffusion [12]. As a consequence, body size
15 impacts on almost every major life history trait including: growth, parental
16 investment, range size, dispersal and degree of host specificity (see [13–15], and
17 references therein, for reviews of Hexapoda).
18
19
20
21
22
23
24
25
26
27
28
29
30

31 Based on these observations a number of size-dependent mechanisms linked
32 to clade diversification have been proposed (reviewed in [3, 4]). These include; hard
33 limits on minimum size, which restrict random character change [16], energetic
34 models emphasizing the relative efficiency of small body sizes in the production of
35 offspring [11, 17], and fractal environmental models, exploring the capacity for small-
36 bodied taxa to more finely subdivide a given environmental landscape [8]. The
37 relationship of these processes to macro-evolutionary diversification remains
38 incompletely understood including, for example, the relative contributions of size-
39 biased cladogenesis (i.e. small taxa being more prone to speciation) [2], directional
40 bias in size evolution within lineages; e.g. “Copes rule” [18], and size-biased
41 extinction [19], on the generation of observed size distributions. Testing the
42 predictions of these models, e.g. the presence of a relationship between clade richness
43
44
45
46
47
48
49
50
51
52
53
54
55
56
57
58
59
60
61
62
63
64
65

1 and body size, as well as more generally exploring the processes that may underlie
2 size evolution, requires that we extend our perspectives to encompass other major
3 lineages that may show differences from our vertebrate model systems [20].
4
5
6

7 The extreme species richness of hexapod clades, which collectively account
8 for over half of all described species, is one of the most well-known features of
9 terrestrial biomes [21]. Hexapoda are also morphologically diverse, including body
10 lengths ranging over four orders of magnitude, comparable with the range of well-
11 studied mammal and bird radiations [13]. The longest known hexapods are females of
12 the phasmid (stick-insect) *Phobaeticus chani* with specimens up to 357 mm long in
13 body length. By contrast, the smallest recognized adult insect, the male of the
14 mymarid wasp *Dicopomorpha echmepterygis* has a total body length of merely 139
15 μm (or 0.139 mm) [13] (see [22] for further examples of extreme miniaturization in
16 hexapods). Evidence to suggest that processes in hexapod size evolution may be
17 distinct from larger vertebrate groups includes taxonomic compilations (e.g. [23]),
18 regional faunal data (e.g. [24, 25]) and broad-scale continental surveys [26], all of
19 which suggest that compared with vertebrates hexapods exhibit relatively little right
20 skew in the distribution of log body size [13, 15]. Likewise, where formal
21 phylogenetic tests of association between clade richness and body size have been
22 conducted for hexapod sub-clades, they have generally failed to recover evidence for
23 small size promoting richness within the group (e.g. [27]), with one study even
24 identifying the opposite pattern with respect to Anisoptera (dragonflies) [28].
25
26
27
28
29
30
31
32
33
34
35
36
37
38
39
40
41
42
43
44
45
46
47
48
49
50

51 In addition to these apparent divergences from size-structured models there
52 are also potential interactions between size evolution and other hexapod traits, several
53 of which have been previously explored as correlates of species richness including
54 complete metamorphosis, and dietary substrate [21, 29, 30]. Metamorphosis has the
55
56
57
58
59
60
61
62
63
64
65

1 potential to structure size evolution via the promotion of modularization of life history
2 stages, and the separation of selection pressures on larval and adult stages [13, 31].
3
4 This process is taken to extremes in Holometabola, where during metamorphosis
5 there is a fundamental reorganization of the body plan [32], and as a result various
6 authors have suggested divergent processes of size evolution associated with this
7 clade (it should be noted, however, that the manifestation of these effects in terms of
8 models of trait evolution remains poorly understood [13, 33]).
9

10
11
12
13
14
15
16
17 The recent and growing consensus with regard to hexapod higher taxonomic
18 relationships from molecular markers e.g. [30, 34, 35] provides us, for the first time,
19 with a framework for exploring large scale patterns of trait evolution within the
20 group. In this study, we combine a published phylogeny of insect higher taxa [30]
21 with comprehensive descriptive information regarding size variation within the clade
22 to explore patterns of body size evolution and its relationship with clade
23 diversification. Hypotheses we test include: a) if the apparent lack of skew in body
24 size distributions (on the log scale) identified for regional faunas can be identified in a
25 global phylogenetic perspective on hexapod body size, b) if consistent relationships
26 between clade richness and body size occur after accounting for phylogeny and size
27 variation within terminal groups. In addition, we explore the probable evolutionary
28 process that may underpin size evolution in hexapods, and whether different major
29 clades (e.g. Holometabola or major orders) are associated with divergent evolutionary
30 processes, as has previously demonstrated in mammals [36], with an aim to explore
31 the possible roles of key innovations such as complete metamorphosis [30].
32
33
34
35
36
37
38
39
40
41
42
43
44
45
46
47
48
49
50
51
52
53
54
55
56
57
58
59
60
61
62
63
64
65

Results

Frequency distribution of body sizes

Body length range data were gathered for 774 higher taxa of insects (resolved primarily to the family level; Table S1). The frequency distributions of the observed values of mean-of-logs (mean of the logged values of the size range limits for each higher taxon), log maximum and log minimum body length for terminal taxa are shown in Figure 1. In all three cases the overall distributions are approximately normal (two-sided Agostino test, log minimum: skew = 0.3333, $z = 2.455$, $p\text{-value} = 0.0141$, log maximum: skew = 0.0752, $z = 0.567$, $p\text{-value} = 0.5706$, mean-of-logs: skew = 0.210, $z = 1.572$, $p = 0.116$), although the distribution of minimum sizes shows a small secondary peak associated with an over-prevalence of taxa reported as bounded at 1 mm (commonly used for convenience in descriptions of small taxa). When mean values are weighted according to their species richness, the resulting distribution shows a significant skew towards larger body sizes (skew = -0.0290, $z = -7.91$, $p\text{-value} = <0.001$) running contrary to the expectations of the paradigm described above.

Comparing major clades we can identify pronounced differences in typical size distributions observed among groups. As Holometabola, the most diverse clade (more than 75% of all extant hexapods) [32] account for the majority of the terminals included in this study (508 out of 775), it is unsurprising that the size distribution of Holometabola (insects with complete metamorphosis) mirrors that of hexapods as a whole, with similar average size to the global mean (Hexapoda; (log) mean= 1.946 ln(mm), sd=0.9491 ln(mm), Holometabola; (log) mean=1.8032 ln(mm), sd=0.8078 ln(mm)). By contrast both the clades Entognatha (non-insect hexapods including springtails; mean =0.8879 ln(mm), sd=1.061 ln(mm) and Paraneoptera (true bugs and

1 their relatives; mean=1.5506 ln(mm), sd=0.7755 ln(mm) are predominantly composed
2 of groups falling at the small end of the size spectrum, the latter particularly with
3 respect to minimum sizes, while large insects include disproportionate representation
4 of Polyneoptera (mean=3.045 ln(mm), sd=0.7455 ln(mm)) and Palaeoptera
5 (particularly large bodied Odonata (dragonflies)); mean= 3.060 ln(mm), sd=0.8825
6 ln(mm)).
7
8
9
10
11
12

13
14 The value of the inferred standard deviation of the terminal distributions
15 shows a rather different phylogenetic pattern from that of the mean size values,
16 although after taking phylogeny into account the two are strongly correlated (PGLS
17 [37] assuming a Brownian covariance structure: Estimate=0.4219, SE=0.1830,
18 t=2.3049, p=0.0214). Clades associated with particularly low values of standard
19 deviation (implying relatively little size variation after accounting for species richness
20 within terminal groups) include Trichoptera, Neuropterida (lacewings and relatives),
21 Psocodea and Odonata while the largest values occur in Coleoptera and advanced
22 Lepidoptera (Figure 2), with the single largest value occurring in the morphologically
23 diverse (4-39 mm) but species poor Lepidoptera family *Aididae* (6 species).
24
25
26
27
28
29
30
31
32
33
34
35
36
37
38
39
40

41 ***Phylogenetic distribution of body size and ancestral states***

42
43 The above patterns are reinforced on the phylogenetic ancestral reconstruction
44 plots for the group (Figure 2, Figure S1), in which the following clades show strong
45 deviations from the average size dynamics: Odonata (with respect to larger than
46 average minimum body size), Psocodea (booklice and lice; small maximum sizes),
47 micro-hymenoptera (the smallest members of Holometabola with particularly small
48 minimum size bounds) and various polyneopteran clades, notably Phasmatodea and
49 Orthoptera. Beyond these limited examples, the majority of hexapod higher taxa log-
50
51
52
53
54
55
56
57
58
59
60
61
62
63
64
65

1 means lie close to global average size, and ancestral reconstruction of internal nodes
2 rapidly approaches this value as an approximation of the global ancestral state.
3

4 Evidence of phylogenetic signal was recovered in both the full dataset and in
5 all the major sub-clades (Table 1) with very strong support, with the exception of
6 Entognatha, where evidence of structuring is present but support is much lower (likely
7 due to the small number of tips on this subtree: 12). Blomberg's K values indicate that
8 Hexapoda as a whole demonstrate somewhat lower values of K than would be
9 expected under a Brownian motion (BM) process, consistent with related species
10 resembling one another less than under the expected BM distribution (see further
11 discussion below). Similar patterns are also identified in Holometabola and
12 Polyneoptera. By contrast, Paraneoptera and Palaeoptera show strong tendencies
13 towards higher-than-expected values of K, indicating differences in the size evolution
14 process among major clades.
15
16
17
18
19
20
21
22
23
24
25
26
27
28
29
30

31 *Body size and species richness*

32 The standardized contrasts in body size and relative rate difference (RRD;
33 defined as, $\ln(N_1/N_2)$, where N_1 = richness of descendant clade with larger body size,
34 and N_2 =the richness of the other descendant clade [38–40]) across major clades are
35 plotted in Figure 3. The estimated relationship through the origin were calculated on
36 the observed mean-of-log sizes and confidence intervals were based on the parametric
37 bootstrap samples as drawn from the estimated terminal distributions for both
38 observed (colored) and randomized (black) data (parameter values in Table 2).
39 Overall, the data for Hexapoda support the presence of a weak positive relationship
40 between richness and body size within the clade, although following the parametric
41 bootstrap this relationship is not significant once the uncertainty of terminal states is
42
43
44
45
46
47
48
49
50
51
52
53
54
55
56
57
58
59
60
61
62
63
64
65

1 taken into account. Similar patterns of null relationships once tip variance is taken
2 into consideration occur in all of the major sub-clades examined, although in the case
3 of Palaeoptera the direction of the relationship observed is negative. When these
4 statistics were recalculated based on PDI (Table S2) no significant relationships were
5 observed between mean size and richness, rendering further parametric bootstrapping
6 redundant.
7
8
9
10
11
12
13

14 *Process of body size evolution*

15
16
17
18
19
20
21
22
23
24
25
26
27
28
29
30
31
32
33
34
35
36
37
38
39
40
41
42
43
44
45
46
47
48
49
50
51
52
53
54
55
56
57
58
59
60
61
62
63
64
65

Considering the potential processes responsible for generating observed patterns of size evolution (see Methods), our data suggest that, of our process based models; the majority of hexapod clades favor simple Brownian motion, with the exception of Holometabola, where the favored process is an single stationary peak (SSP/OU) model with convergence on a single global optimum or elevated diversification at distant tips (Table 3, Table S3). However, when models without an explicit generating process are considered (i.e. lambda and white noise (WN)), this picture changes, such that for Hexapoda as a whole and Holometabola, there is evidence for considerable non-phylogenetic signal in body size, resulting in lambda values that significantly diverge from the expectations of BM (although in all cases the WN model with no phylogenetic signal is strongly rejected, see also Table 1). Similar patterns are obtained when the major holometabolan orders are examined individually, with Hymenoptera (bees, wasps and ants), Coleoptera (beetles) and Lepidoptera (moths and butterflies) all favoring BM processes, while Diptera (flies) shows strong evidence for non-phylogenetic signal (thus favoring the lambda model). The implications of these differences for our understanding of size evolution in hexapods, and particularly within Holometabola and Diptera, will be explored below.

1 The findings of Bayesian Analysis of Macro-evolutionary Mixtures (BAMM)
2 further support the idea that the process of size evolution behaves differently in
3 holometabolan and non-holometabolan groups (Figure 4). A single shift in the rate
4 model associated with the origins of Holometabola is recovered with a marginal
5 probability of 0.988, i.e. it is found in > 95% of all sampled models from the post
6 burn-in chain. The single most sampled configuration recovers only this shift (with a
7 relative frequency of 0.5; Figure S2), suggesting that the impact of other events on
8 size evolution within the group is comparatively marginal. This regime shift in
9 Holometabola is associated with a reversal in the rate of size evolution, such that
10 within this clade rates appear to accelerate through time, contrasting with the weak
11 deceleration observed across the remaining hexapods (potentially consistent with the
12 BM process described above). The only other nodes found to significantly contribute
13 to heterogeneity in size evolution within hexapods are associated with decelerations in
14 size evolution within Trichoptera, both when including (relative frequency 0.17) and
15 when excluding (relative frequency 0.18)) the basal family Hydroptilidae.
16
17
18
19
20
21
22
23
24
25
26
27
28
29
30
31
32
33
34
35
36

37 **Discussion**

38 The findings of this study corroborate previous taxonomic surveys at
39 continental scales (e.g. [24–26]) suggesting that the distribution of body lengths in
40 hexapod families does not show a strong skew towards an over-abundance of small
41 sized taxa on the log scale. We also demonstrate that, while size does show
42 phylogenetic structuring with respect to different hexapod groups, after accounting for
43 these relationships and the variances observed within tip groups, there is no global
44 negative association between body length and diversification across the studied taxa.
45 Finally, our survey of possible evolutionary models suggests that the pattern and
46 processes of size evolution in Holometabola, and possibly Diptera, are distinct from
47
48
49
50
51
52
53
54
55
56
57
58
59
60
61
62
63
64
65

1 those of other hexapod groups. In both cases evidence for non-phylogenetic signal
2 suggests that these differences cannot be adequately accounted for in single parameter
3 extensions of Brownian motion, although for other groups, body size evolution looks
4 approximately Brownian.
5
6
7
8

9 The recognition that body length distributions in Hexapoda show relatively
10 little bias on a log scale, and that diversification rates within the group are
11 approximately independent of size, supports the idea that concepts derived from the
12 study of vertebrate groups [1, 3] may be inappropriate when discussing other
13 taxonomic groups [5, 6], and hexapods in particular [13, 15, 26]. Possible
14 explanations for these differences focus on the potential for small absolute body size
15 to alter the link between body-size and clade diversification. For example, small-
16 bodied organisms experience distinct flow conditions where viscous forces, such as
17 surface tension and air resistance, have the potential to overwhelm the effect of the
18 gravitational forces (i.e. body weight) that are responsible for structuring body size
19 changes at larger spatial scales [10, 41]. Likewise, fractal environmental models,
20 which postulate the existence of a higher number of niches at small body sizes [8, 9],
21 may become inapplicable below a certain scale, particularly with respect to
22 “parasitic” taxa, which live on the surface of larger host organisms (typical of the
23 majority of hexapods), and are therefore subject to local homogeneity in the
24 composition of their environment across a range of spatial scales [23, 42, 43]. In
25 addition with respect to hexapods, despite a general trend towards larger-bodied
26 organisms showing greater reproductive output, there is evidence from well-studied
27 systems to suggest that this pattern is not universal across the group [17, 44, 45].
28 Thus, several of the mechanisms typically invoked to account for size-biased
29 diversification in vertebrates may not be applicable to Hexapoda, reflecting a
30
31
32
33
34
35
36
37
38
39
40
41
42
43
44
45
46
47
48
49
50
51
52
53
54
55
56
57
58
59
60
61
62
63
64
65

1 potential danger of extrapolation from well-studied, but atypical clades to describe
2 global evolutionary processes [6]. There is a need to further investigate processes of
3 size evolution across a broader range of invertebrate groups for comparative purposes
4 (e.g. [46]), which, when taken together, may provide us with new insights into
5 underlying mechanisms controlling the size structuring of natural environments [47].
6
7
8
9
10

11
12 Despite the presence of non-phylogenetic signal in some specific groups, there
13 is considerable evidence that the majority of hexapod clades are strongly phylogenetic
14 structured with respect to body size, and hence size evolution within Hexapoda is
15 broadly described by a BM process on the log scale. However, many specific clades
16 appear, within the limits of available data, to be constrained to a particular subset of
17 possible sizes. The mechanisms underlying such constraint are likely to be variable
18 across different lineages. For example, the absence of small body sizes within
19 Odonata may be attributed to limitations on the minimum size required for the
20 group's unique flight mechanism [48]. In other cases, the causes of constraint are
21 much less apparent, e.g. the absence of large bodied members of the order Psocodea
22 (booklice; even after accounting for the parasitic and small-bodied Pthiraptera), which
23 may reflect constraints of a cryptic and concealed lifestyle in a group that has
24 received comparatively little detailed study. The effect of such constraints at the
25 super-ordinal scale appears to be marginal, as all of the major lineages demonstrated a
26 wide variation in size as well as homogeneity of process within clades (and across
27 clades, with the exception of Holometabola and Diptera). The overriding impression
28 therefore is that, within the limitations imposed by restricted phylogenetic resolution,
29 size evolution within hexapods is dominated by comparatively localized factors
30 operating at the sub-ordinal or super-familial level.
31
32
33
34
35
36
37
38
39
40
41
42
43
44
45
46
47
48
49
50
51
52
53
54
55
56
57
58
59
60
61
62
63
64
65

1
2
3
4
5
6
7
8
9
10
11
12
13
14
15
16
17
18
19
20
21
22
23
24
25
26
27
28
29
30
31
32
33
34
35
36
37
38
39
40
The reconstruction of estimated standard deviation in body size within Hexapoda generated here bears a strong qualitative resemblance to previously recovered patterns of diversification rate shifts across the clade [30]. This is particularly striking in that clades previously recovered as downshifted with respect to diversification rate, e.g. Psocodea, Neuroptera and Trichoptera, are here recovered as having comparatively low standard deviation in body size, suggesting a link between the diversification process and radiation into novel morphospace [49]. Similar ideas have been previously proposed with respect to bird families, [49], but formalized testing via multiple regression has been shown to be statistically problematic, due to an inability to distinguish time-dependent and speciation-dependent generation of variance [50, 51]. This, in combination with the data abstraction required to treat higher taxonomic groups here (see below; [52]), and the fact that our approaches to estimate standard deviation are confounded with clade richness (see methods; [53]), meant that we did not feel secure in pursuing this line of investigation within the current study. However, in the presence of better data, particularly for within clade body size distributions, this is an intriguing concept and one that merits further investigation.

41
42
43
44
45
46
47
48
49
50
51
52
53
54
55
56
57
58
59
60
61
62
63
64
65
When considering the processes that may underlie the evolution of hexapod body size, our analyses identify Holometabola, and in particular Diptera, as having undergone divergent evolutionary processes when compared with the remaining Hexapoda (the latter being dominated by an overall Brownian drift across the phylogeny). None of the explicit process models explored here were recovered as adequate descriptors of what this divergent process may be, although the BAMM analysis of rate heterogeneity suggests a rate acceleration through time may be involved. The (favored; Table 3) lambda model is not in itself a process description,

1 hence this parameter is most commonly described as a test of phylogenetic signal (e.g.
2 [54]). Despite this limitation, we can conceptually distinguish three possible sources
3 of non-phylogenetic signal that may individually or collectively explain the deviation
4 from BM within these clades: random noise in the dataset (e.g. from inadequate
5 descriptive data), phylogenetic error in taxon assignments, and the presence of
6 complex evolutionary processes that are inadequately accommodated within the
7 single parameter extensions of BM examined above.
8
9
10
11
12
13
14
15
16

17 Focusing on Diptera as the extreme case of divergence from BM (Table S3), it
18 can be noted that, in comparison with e.g. Lepidoptera, where the majority of large
19 bodied members are restricted to two derived clades (Macroheterocera; “macro-
20 moths”, and Rhopalocera; butterflies [55]), large bodied flies occur in basal, (e.g.
21 Tipulidae; crane flies), intermediate (e.g. Asilidae and Mydidae; robber and Mydas
22 flies), and highly derived, phylogenetic positions (e.g. Oestridae; bot flies). Likewise,
23 miniaturization also occurs in a range of unrelated families, e.g. Braulidae (bee lice;
24 approximated mean length=1.30mm), Corethrellidae (mean =1.22mm) and Phoridae
25 (mean =1.75mm), which collectively may further skew size distributions across the
26 order [56]. Thus, there is the potential for divergent processes of size evolution within
27 the clade that are not fully captured by the simplistic evolutionary models
28 implemented here. However, noise in the dataset e.g. from the use of regional
29 taxonomic descriptions (North and Central America [57–59]) as proxies for global
30 size distributions, and phylogenetic uncertainty in relationships, e.g. within
31 Schizophora [30, 60, 61], mean that we should be cautious of over-interpreting these
32 patterns and await better comparative information, preferably incorporating
33 developmental and larval data [13]. It should also be noted that Diptera, and to a
34 lesser extent all Holometabola are, in terms of proportion of probable species
35
36
37
38
39
40
41
42
43
44
45
46
47
48
49
50
51
52
53
54
55
56
57
58
59
60
61
62
63
64
65

1 described, less well-known than comparable groups (e.g. Coleoptera, Odonata) [62],
2 and thus may be more strongly impacted by collection and modeling biases outlined
3 below.
4
5

6
7 The apparent association of Holometabola with accelerating rates of size
8 evolution through time (even if we cannot define the specific underlying model) is
9 interesting given that complete metamorphosis has previously been identified as a key
10 innovation in hexapod diversification [30]. Plausible mechanisms for different
11 process of size evolution within the clade include: modularization of life history
12 stages decoupling adult body-size from larval ecology and so permitting greater
13 adaptive flexibility [13, 31], and historical factors relating to the differential
14 extinction of large bodied non-holometabolan groups [19, 63]. There have been
15 various suggestions, based on the small size of early fossil representatives [33], that
16 patterns within Holometabola may follow the widely acknowledged principal known
17 as Cope's rule, which postulates that increased niche specialization tends to lead to
18 increased body sizes within a clade over evolutionary time [18] (although in hexapods
19 extreme miniaturization is just as much associated with specialization [14, 22]) .
20 However, the lack of a joint systematic framework for extant and fossil taxa has
21 restricted formal testing of this assertion in recent fossil compilations (e.g. [64]).
22
23
24
25
26
27
28
29
30
31
32
33
34
35
36
37
38
39
40
41
42

43 Unlike well-studied vertebrate clades, there is currently no universal reference
44 source for comparative data within Hexapoda, nor of the demographic or ecological
45 information that may aid in interpreting models of size evolution [36, 65]. As a result,
46 the information used here is derived from a mix of global and regional scale datasets
47 collected at the level of individual clades (Table S1). This imposes additional
48 assumptions beyond the selection of phylogenetic framework (see discussion of the
49 tree used in [30]) and the use of described species as proxies for total clade richness
50
51
52
53
54
55
56
57
58
59
60
61
62
63
64
65

1 [66]. There are two major sources of error that may impinge on this analysis and
2 whose extents are problematic to test in the absence of more finely resolved
3 taxonomic data. The first relates to the representative nature of the compiled size
4 limits as accurately reflecting the true size range of studied terminal groups. Due to a
5 lack of data for tropical faunas, the information used here includes an over-reliance on
6 North American, Australian and European taxa, which, due to the presence of a well-
7 known latitudinal cline in insect body size [13], has the potential to bias the raw data
8 on which our findings are based. While acknowledging that such a bias is difficult to
9 explicitly test, we note that previous work has found evidence that regional data for
10 taxonomic groups is predictive of global patterns with respect to hexapod body size
11 [26] and that by combining multiple regional sets we at least attempt to consolidate
12 our size ranges across the known taxonomic range.
13
14
15
16
17
18
19
20
21
22
23
24
25
26
27
28

29 A second subtle source of bias originates from the conversion of raw size
30 range data into lognormal distributions that are the source of the parameters used in
31 our modeling procedure. An implicit assumption of using lognormal distributions is
32 that on the logged scale the data is symmetrical around the mean (allowing us to use
33 the observed mean-of-logs as our estimate of average size). However, faunal body
34 size compilations suggest that, with increasing species richness, size distributions
35 becomes increasingly right skewed on the log scale [15], although individual sub-taxa
36 often vary in skew independently of the overall fauna [67]. For the global family
37 distributions considered here, available data on size-distributional skew is
38 insufficiently resolved to contribute to the models considered here, and as a result we
39 have elected to retain the explicit linkage between raw observations and parametric
40 descriptors provided by the assumption of log-normality.
41
42
43
44
45
46
47
48
49
50
51
52
53
54
55
56
57
58
59
60
61
62
63
64
65

1
2
3
4
5
6
7
8
9
10
11
12
13
14
15
16
17
18
19
20
21
22
23
24
25
26
27
28
29
30
31
32
33
34
35
36
37
38
39
40
41
42
43
44
45
46
47
48
49
50
51
52
53
54
55
56
57
58
59
60
61
62
63
64
65

Another difficult-to-test but implicit assumption in our work is that the probability of species description within terminal taxa is not itself biased by body size [68–70] or, to put this another way, that the estimates of described species richness for terminal groups are unbiased approximations of their true extant diversity [66]. The problem of acquiring estimates of “true” species richness based on incomplete records of described species is one of the most profound challenges facing work on any diverse clade (see discussions in [66, 71] and references therein). Of the work conducted here, the observed pattern, i.e. a weak and statistically non-significant positive correlation is potentially consistent with systematic under description of small bodied species; however, this effect would have to be large in-order to mask any “real” negative relationship present within the group. As with many issues relating to unknowns in the richness of large clades, efforts to integrate global taxonomic databases together with associated rates of species description, synonymy resolution and meta-data such as body size, will go a long way towards characterizing what it is that we still do not know regarding hexapod diversity [21].

In addition to description bias, there are also issues relating to the appropriate partitioning of within tip variance, which here we have treated as arising entirely from taxonomic under-sampling. Thus, the effect that novel species description would have on the estimate of the mean body size of a given clade depends on the number of described species in this clade (hence why the estimate of variance is clade-richness dependent [53]), whereas in reality, such estimates also encompass other sources of error such as length variation among individual specimens [72] and sexual dimorphism [73], which may contribute to variation observed across lineages. Dealing with within tip variance in trait measurements is perhaps the greatest outstanding challenge in modeling of trait evolution at deep phylogenetic levels [74].

1 The methods used here, based on [75, 76], were originally developed with the aim to
2 incorporate measurement error in tip values, with the result that they contain
3 assumptions regarding the distribution of such variance that may not be appropriate
4 for all of the contributing sources of variance present within this dataset. Alternative
5 approaches exist, e.g. “MECCA” [77]; however, these involve simulating multiple
6 species-complete trees (computationally unfeasible on the scale of Hexapoda) and
7 also make strong assumptions regarding variance structure within tip taxa. Further
8 work on partitioning variance within phylogenetic models [74], as well as improved
9 understanding in how such variance is structured in groups where there is good
10 phylogenetic information, represents an area of great potential in understanding how
11 trait evolution may be modeled across very large taxonomic groups.
12
13
14
15
16
17
18
19
20
21
22
23
24
25
26

27 **Conclusions**

28
29
30
31 Within the limits of the available data and the neontological approach, our
32 analyses suggest that the evolutionary forces structuring macro-evolutionary patterns
33 of body size within Hexapoda are not simply and directly related to those responsible
34 for structuring the diversity of the group. The overall pattern of body size evolution
35 within the group, based on its extant representatives appears to be broadly driven by
36 essentially neutral forces (at a log scale) with the exception of the poorly defined
37 processes operating within Holometabola and Diptera. This conclusion differs from
38 that of fossil based surveys of the group, which have emphasized constraints in
39 shaping size evolution in hexapods, such as oxygen limitation (e.g. [12, 64]) and the
40 evolution of vertebrate predators (notably birds) [78]. These differences reflect
41 differences in the underlying data, including a focus on the evolution of mean body
42 size within clades as opposed to the limits of its maximum value [64], the inability of
43 analyses based on extant data to take account of no-longer existing diversity [79] and
44
45
46
47
48
49
50
51
52
53
54
55
56
57
58
59
60
61
62
63
64
65

1 impacts of phylogenetic non-independence, which are often neglected in fossil
2 analyses of hexapods [32].
3

4 The consequences of these findings for the standard size paradigm (e.g. [1]),
5 with its emphasis on vertebrates, in which size and richness show a strong degree of
6 coupling [2, 3], are significant in that they attack the universality of these findings to
7 other terrestrial clades [6]. As with any macro-evolutionary study involving
8 incompletely described taxonomic groups, we must pay special attention to the role of
9 missing data and interpolation in defining the observed pattern. Hence here we have
10 attempted at a basic level to incorporate within tip variance into our discussion of
11 body size and diversification. Great challenges remain in trying to tease apart
12 ecological and evolutionary processes in groups operating on temporal and spatial
13 scales profoundly different from our own. The analysis presented here thus should be
14 taken as a step on the road towards a broader understanding of the processes of size
15 evolution and its consequences for an invertebrate perspective of the natural world.
16
17
18
19
20
21
22
23
24
25
26
27
28
29
30
31
32

33 **Methods**

34 An ideal analysis of body size evolution would comprehensively explore
35 patterns and processes at the species level. However, because of the enormous
36 richness of Hexapoda, phylogenetic and trait data are currently too sparse to support a
37 comprehensive species-level analysis. Therefore, for practical reasons we restrict our
38 discussion to the family level, based on recently proposed phylogenetic relationships
39 [30].
40
41
42
43
44
45
46
47
48
49
50
51

52 All size data for this study is based on family-level estimates of minimum and
53 maximum body length collected from global, regional and taxonomic datasets ([57-
54 59, 80-202], Table S1). The use of length as a proxy for size is common in Hexapoda
55 due to difficulties in estimating mass from dried museum specimens [13, 15]. Taxon-
56
57
58
59
60
61

1 specific length to mass conversion factors (e.g. [203]) were explored for use in this
2 study and produced qualitatively similar results; however, due to the large amount of
3 uncertainty associated with these values, the presented analyses are restricted to raw
4 length data. Body length was taken as from the anterior margin of the head to the
5 termination of the abdomen, discounting wing cases, abdominal limbs, antennae or
6 cerci where such resolution was available. For taxa such as Lepidoptera (moths)
7 where data-sources record body-size via an alternative metric (e.g. wingspan),
8 average measurements of accompanying illustrations (between one and eight per
9 terminal; selected to encompass the observed diversity) were used to convert these
10 values to body length (examples listed in Table S1). For Trichoptera (caddis flies),
11 which are typically not illustrated so as to make both the wingspan and body length
12 visible, conversion for the whole order was based on specimens of the various
13 families illustrated in [81].

14
15
16
17
18
19
20
21
22
23
24
25
26
27
28
29
30
31
32
33
34
35
36
37
38
39
40
41
42
43
44
45
46
47
48
49
50
51
52
53
54
55
56
57
58
59
60
61
62
63
64
65

Estimates of clade richness follow [30]. Resolution of taxonomic conflict is described in Table S1. In order to avoid issues associated with estimating standard deviation for mono-specific clades (see below) all richness estimates were increased by two for the purposes of modeling relationships. This process is recognized as *ad-hoc* but regarded as preferable to the loss of phylogenetic information resulting from the exclusion of such lineages. In total, the dataset consisted of 774 terminal taxa spanning all major hexapod lineages (Table S1).

For modeling purposes, we assumed that, within terminal groups, species conform to a lognormal size-distribution, the parameters of which are estimated from the observed minimum, maximum and richness data. This is a strong assumption, but one conforming to available data regarding hexapod size distributions at the family level [204, 205], and can therefore be regarded as the obvious default in the absence

1 of data to the contrary. The mean of the approximated distributions (henceforth
2 treated on a log scale) was taken as the mean of the log values of the minimum and
3
4 maximum size estimates (henceforth mean-of-logs). The standard deviation of
5
6 approximated distributions was estimated using meta-analysis statistics that assume a
7
8 sample-size dependent relationship between the estimated sd and the observed range
9
10 [53]. Thus, for very small clades (<15 taxa) sd was calculated using Equation [16] of
11
12 [53], for moderately diverse groups (16-70 taxa) sd was estimated as range over four,
13
14 [53], for moderately diverse groups (16-70 taxa) sd was estimated as range over four,
15
16 and for large clades (>70 taxa) sd was estimated as range over six [53]. These
17
18 procedures assume that the mean values for species rich groups are known with
19
20 greater accuracy (i.e. have smaller associated variance) than species poor groups with
21
22 the same size-range, reflecting the fact that the former are less likely to be perturbed
23
24 by further species description (see Discussion). Given that our estimates of standard
25
26 deviation are thus dependent on corrected clade richness it is appropriate that we
27
28 maintain this assumption into the derived estimates of standard error (SE) around the
29
30 clade specific mean-of-logs values. Hence our SE estimates for modeling
31
32 evolutionary processes [75] were calculated, under the assumption that sample size
33
34 was equivalent to corrected clade richness.

41 Descriptive plots of the observed frequency distribution of size were generated
42
43 for hexapods as a whole and for the major super-ordinal sub-clades [30, 34, 35]. The
44
45 normality of the overall mean distributions, both at the level of terminal taxa, and
46
47 with taxa weighted by their observed species richness (Figure 1), was assessed using
48
49 an Agostino test [206] (implemented in R [207]; package *moments* [208]). The
50
51 phylogenetic distribution of minimum, maximum and mean body length, as well as
52
53 the estimates of terminal standard deviation (Figure 2, Figure S1) were plotted using a
54
55
56
57
58
59
60
61
62
63
64
65

1 Brownian motion (BM) ancestral reconstruction [209] implemented in the package
2 *phytools* [210].
3

4
5 The degree of phylogenetic signal present in the data with respect to mean-of-
6
7 logs size was assessed using Blomberg's K statistic [211], and by comparing the
8
9 observed variance among the phylogenetically independent contrasts (PICs) with
10
11 1,000 randomized data replications, applying the correction of [75] to account for
12
13 within-group variance (implemented in the package *phytools*) (Table 1). Blomberg's
14
15 K can be visualised as measuring the degree to which an observed dataset converges
16
17 on the expectations of BM (producing an expected value of 1) [211]. Data with no
18
19 phylogenetic signal will produce a K value of 0 and values less or greater than 1
20
21 should be interpreted as lower or higher than expected similarity among terminal taxa,
22
23 which can be a manifestation of more complex trait evolutionary processes (see
24
25 below).
26
27
28
29
30

31 To explore the relationship between diversification and body size, we used an
32
33 adaptation of the PIC derived "macrocaic" method implemented in the package *caper*
34
35 [212], which is optimized to explore associations of traits values and species richness
36
37 at the level of higher taxa [38–40]. Richness contrasts at each node were standardized
38
39 using two metrics: relative rate difference (RRD; Table 2, Figure 3), and proportion
40
41 dominance index (PDI; $(N_1/(N_1 + N_2) - 0.5)$, Table S2). Size was modeled as the mean-
42
43 of-logs estimate and the relationship between the two sets of independent contrasts
44
45 assessed using regression through the origin [39]. To incorporate within-tip variance
46
47 in size we used a parametric bootstrap, where across 50,000 pseudo-replicated
48
49 datasets the values of terminal groups were taken as random draws from the estimated
50
51 terminal distributions (see above) and the 95% bounds on the relationship between
52
53 contrasts were estimated. This distribution was compared with that of an identical
54
55
56
57
58
59
60
61
62
63
64
65

1 number of replicated null data samples where terminal size-values were randomized
2 across the tree. Significance was judged on whether the 95% confidence intervals on
3 the bootstrapped data excluded those of the randomized null data.
4
5

6
7 To explore the processes responsible for generating the observed size
8 distribution we used a model testing framework: `fitContinuous`, in the package *geiger*
9 [213, 214]. Candidate models fitted were: a simple BM process; the early burst model
10 (EB/ACDC), [20, 211] where rates of evolution through time exponentially increase
11 or decrease; the delta model [54], which scales the phylogeny so as to bias the
12 distribution of rates of trait evolution towards either the root or tips; and the SSP
13 model (single stationary peak; modeled as an Ornstein-Uhlenbeck process) [215],
14 which assumes that trait evolution convergences on a single global optimum value
15 (Table 3, Table S3). All of these models are capable of expressing BM as a special
16 case, resulting from near-zero estimates of the relevant scaling parameters.
17
18
19
20
21
22
23
24
25
26
27
28
29
30

31 In addition, we also fitted two models without an explicit generating process,
32 in order to measure the role of noise and non-phylogenetic signal in the structure of
33 our dataset. The lambda model [54] calculates a global statistic measuring the extent
34 of deviation in the inter-tip covariance matrix from the assumptions of BM (which
35 corresponds to a lambda value of 1). The white noise model (WN) corresponds to a
36 lambda value of 0, and reflects the result that would be obtained in the absence of any
37 phylogenetic structure (star tree) with tip states being drawn from a single underlying
38 normal distribution (Table 3, Table S3). All fitted models incorporated estimates of
39 standard error around the mean-of-logs, using the methodology of [75] (see above for
40 how these are calculated). Model selection was performed on the basis of AICc values
41 and Akaike weights, see discussion in [20].
42
43
44
45
46
47
48
49
50
51
52
53
54
55
56
57
58
59
60
61
62
63
64
65

1
2
3
4
5
6
7
8
9
10
11
12
13
14
15
16
17
18
19
20
21
22
23
24
25
26
27
28
29
30
31
32
33
34
35
36
37
38
39
40
41
42
43
44
45
46
47
48
49
50
51
52
53
54
55
56
57
58
59
60
61
62
63
64
65

Finally, we conducted an exploration of the homogeneity of the process of size evolution within Hexapods using the shift-based reversible jump Markov Chain Monte Carlo framework BMM [216]. As implemented here, the analysis fits EB/ACDC models of size evolution to nodes within the tree signifying regime changes among descendent clades based on an underlying Poisson proposal mechanism. This allows the identification of potential breakpoints in the underlying process of size evolution without the imposition of an explicit prior model. Note that this procedure in its current form is unable to accommodate error in the tip value estimates, thus only the mean-of-log size values for terminal clades were modeled.

Starting values for BMM were calculated as a homogenous BM process in fitContinuous (betaInit= 0.002424, betaShiftInit= 0), and prior distributions calculated using the package *BMMtools* (poissonRatePrior = 1, betaInitPrior = 412.47 betaShiftPrior = 0.002408). We set informative priors on the rate of regime change favoring a homogenous diversification process in order to maximize the credibility of any shifts recovered. Chains were run for 500 million generations with sampling conducted every 5 million generations. Burn-in was estimated based on the stabilization of the inferred likelihood measurements at 10% of the total sample. Adequate sampling of the stable distribution was assessed on the convergence of two independent runs from divergent starting parameters, based on complete overlap of the credible shift set of models accounting for 70% of the overall described likelihood. The results presented here are taken only from the first chain, based on the estimated homogenous BM parameters.

Availability of supporting data

The dataset supporting the results of this article is available in Table S1.

Competing interests

The authors declare that they have no competing interests.

Authors' contributions

JR conceived and designed the study, collected the data, performed the analysis and wrote the manuscript. MH helped conceive the study, provided technical oversight and resources and helped to draft the manuscript. PM helped conceive the study, participated in its design and coordination and helped to draft the manuscript. All authors read and approved the final manuscript.

Acknowledgements

The work was funded by NERC (<http://www.nerc.ac.uk>) grant NE/J500197/1. The authors would like to acknowledge Dr. Colin Beal for advice and assistance in the implementation of the parametric bootstrap and for helpful discussion of findings.

References

1. Kozłowski J, Gawelczyk AT. Why are species' body size distributions usually skewed to the right? *Funct Ecol* 2002, 16:419–432.
2. Maurer BA: The evolution of body size in birds. I. Evidence for non-random diversification. *Evol Ecol* 1998, 12:925–934.
3. Gardezi T, da Silva J. Diversity in relation to body size in mammals: A comparative study. *Am Nat* 1999, 153:110–123.
4. Allen C, Garmestani AS, Havlicek TD, Marquet PA, Peterson GD. Patterns in body size distributions: sifting among alternative hypotheses. *Ecol Lett* 2006, 9:630–643.
5. Orme CDL, Isaac NJB, Purvis A. Are most species small? Not within species-level phylogenies. *Proc R Soc Lond B Biol Sci* 2002, 269:1279–1287.
6. Orme CDL, Quicke DLJ, Cook JM, Purvis A. Body size does not predict species richness among the metazoan phyla. *J Evol Biol* 2002, 15:235–247.
7. McClain CR, Boyer AG. Biodiversity and body size are linked across metazoans. *Proc R Soc Lond B Biol Sci* 2009, 276:2209–2215.

- 1
2
3
4
5
6
7
8
9
10
11
12
13
14
15
16
17
18
19
20
21
22
23
24
25
26
27
28
29
30
31
32
33
34
35
36
37
38
39
40
41
42
43
44
45
46
47
48
49
50
51
52
53
54
55
56
57
58
59
60
61
62
63
64
65
8. Hutchinson GE, MacArthur RH. A theoretical ecological model of size distributions among species of animals. *Am Nat* 1959, 93:117–125.
 9. Morse DR, Lawton JH, Dodson MM, Williamson MH. Fractal dimension of vegetation and the distribution of arthropod body lengths. *Nature* 1985, 314:731–733.
 10. Vogel S. *Life in moving fluids: The physical biology of flow*. Princeton: Princeton University Press; 1994.
 11. Brown JH, Gillooly JF, Allen AP, Savage VM, West GB. Towards a metabolic theory of ecology. *Ecology* 2004, 85:1771–1789.
 12. Harrison JF, Kaiser A, VandenBrooks JM. Atmospheric oxygen level and the evolution of insect body size. *Proc R Soc B Biol Sci* 2010, 277:1937–1946.
 13. Chown SL, Gaston KJ. Body size variation in insects: a macroecological perspective. *Biol Rev* 2010, 85:139–169.
 14. Davis RB, Ōunap E, Javoš J, Gerhold P, Tammaru T. Degree of specialization is related to body size in herbivorous insects: a phylogenetic confirmation. *Evolution* 2013, 67:583–589.
 15. Gaston KJ, Chown SL. Macroecological patterns in insect body size. In: Smith F, Lyons SK, editors. *Animal body size: linking pattern and process across space time and taxonomic group*. Chicago: University of Chicago Press; 2013. p. 13–61.
 16. McKinney ML. Trends in body size evolution. In: McNamara KJ, editor. *Evolutionary trends*. Tucson: University of Arizona Press; 1990. p. 75–118.
 17. Sokolovska N, Rowe L, Johansson F. Fitness and body size in mature odonates. *Ecol Entomol* 2000, 25:239–248.
 18. Hone DWE, Benton MJ. The evolution of large size: how does Cope’s Rule work? *Trends Ecol Evol* 2005, 20:4–6.
 19. Monroe MJ, Bokma F. Mass extinctions do not explain skew in interspecific body size distributions. *J Zool Syst Evol Res* 2013, 51:13–18.
 20. Harmon LJ, Losos JB, Jonathan Davies T, Gillespie RG, Gittleman JL, Bryan Jennings W, et al. Early bursts of body size and shape evolution are rare in comparative data. *Evolution* 2010, 64:2385–2396.
 21. Mayhew PJ. Why are there so many insect species? Perspectives from fossils and phylogenies. *Biol Rev* 2007, 82:425–454.
 22. Polilov AA. Small is beautiful: features of the smallest insects and limits to miniaturization. *Annu Rev Entomol* 2015, 60:103–121.
 23. Poulin R, Morand S. Parasite body size distributions: interpreting patterns of skewness. *Int J Parasitol* 1997, 27:959–964.

- 1
2
3
4
5
6
7
8
9
10
11
12
13
14
15
16
17
18
19
20
21
22
23
24
25
26
27
28
29
30
31
32
33
34
35
36
37
38
39
40
41
42
43
44
45
46
47
48
49
50
51
52
53
54
55
56
57
58
59
60
61
62
63
64
65
24. Ulrich W. Body weight distributions of European Hymenoptera. *Oikos* 2006, 114:518–528.
 25. Ulrich W. Body weight distributions of central European Coleoptera. *Eur J Entomol* 2007, 104:769–776.
 26. Finlay BJ, Thomas JA, McGavin GC, Fenchel T, Clarke RT. Self-similar patterns of nature: insect diversity at local to global scales. *Proc R Soc B Biol Sci* 2006, 273:1935–1941.
 27. Katzourakis A, Purvis A, Azmeh S, Rotheray G, Gilbert F. Macroevolution of hoverflies (Diptera: Syrphidae): the effect of using higher-level taxa in studies of biodiversity, and correlates of species richness. *J Evol Biol* 2001, 14:219–227.
 28. Misof B. Diversity of Anisoptera (Odonata): Inferring speciation processes from patterns of morphological diversity. *Zoology* 2002, 105:355–365.
 29. Mitter C, Farrell B, Wiegmann B. The phylogenetic study of adaptive zones: has phytophagy promoted insect diversification? *Am Nat* 1988, 132:107–128.
 30. Rainford JL, Hofreiter M, Nicholson DB, Mayhew PJ. Phylogenetic distribution of extant richness suggests metamorphosis is a key innovation driving diversification in insects. *PLoS ONE* 2014, 9:e109085.
 31. Yang AS. Modularity, evolvability, and adaptive radiations: a comparison of the hemi - and holometabolous insects. *Evol Dev* 2001, 3:59–72.
 32. Grimaldi DA, Engel MS. *Evolution of the Insects*. Cambridge: Cambridge University Press; 2005.
 33. Nel A, Roques P, Nel P, Prokin AA, Bourgoïn T, Prokop J et al. The earliest known holometabolous insects. *Nature* 2013, 503:257–261.
 34. Trautwein MD, Wiegmann BM, Beutel RG, Kjer KM, Yeates DK. Advances in insect phylogeny at the dawn of the postgenomic era. *Annu Rev Entomol* 2012, 57:449–468.
 35. Misof B, Liu S, Meusemann K, Peters RS, Donath A, Mayer C, et al. Phylogenomics resolves the timing and pattern of insect evolution. *Science* 2014, 346:763–767.
 36. Cooper N, Purvis A. Body size evolution in mammals: complexity in tempo and mode. *Am Nat* 2010, 175:727–738.
 37. Pagel M. Inferring evolutionary processes from phylogenies. *Zool Scr* 1997, 26:331–348.
 38. Agapow P-M, Isaac NJB. MacroCAIC: revealing correlates of species richness by comparative analysis. *Divers Distrib* 2002, 8:41–43.

- 1
2
3
4
5
6
7
8
9
10
11
12
13
14
15
16
17
18
19
20
21
22
23
24
25
26
27
28
29
30
31
32
33
34
35
36
37
38
39
40
41
42
43
44
45
46
47
48
49
50
51
52
53
54
55
56
57
58
59
60
61
62
63
64
65
39. Isaac NJB, Agapow P-M, Harvey PH, Purvis A. Phylogenetically nested comparisons for testing correlates of species richness: a simulation study of continuous variables. *Evolution* 2003, 57:18–26.
40. Freckleton RP, Phillimore AB, Pagel M. Relating traits to diversification: a simple test. *Am Nat* 2008, 172:102–115.
41. Whitman DW. The significance of body size in the Orthoptera: a review. *J Orthoptera Res* 2008, 17:117–134.
42. Mouillot D, George-Nascimento M, Poulin R. How parasites divide resources: a test of the niche apportionment hypothesis. *J Anim Ecol* 2003, 72:757–764.
43. Nyman T. To speciate, or not to speciate? Resource heterogeneity, the subjectivity of similarity, and the macroevolutionary consequences of niche-width shifts in plant-feeding insects. *Biol Rev* 2010, 85:393–411.
44. Klingenberg CP, Spence J. On the role of body size for life-history evolution. *Ecol Entomol* 1997, 22:55–68.
45. Blanckenhorn W. The evolution of body size: what keeps organisms small? *Q Rev Biol* 2000, 75:385–407.
46. Nekola J, Barker G, Cameron R, Pokrysko B. Latitudinal Variation of Body Size in Land Snail Populations and Communities. In: Smith F, Lyons SK, editors. *Animal body size: linking pattern and process across space time and taxonomic group*. Chicago: University of Chicago Press; 2013. p. 62-94.
47. Woodward G, Ebenman B, Emmerson M, Montoya JM, Olesen JM, Valido A, Warren PH. Body size in ecological networks. *Trends Ecol Evol* 2005, 20:402–409.
48. Dudley R. *The biomechanics of insect flight: form, function, evolution*. Princeton: Princeton University Press; 2002.
49. Ricklefs RE. Cladogenesis and morphological diversification in passerine birds. *Nature* 2004, 430:338–341.
50. Purvis A. Evolution: How do characters evolve? *Nature* 2004, 432.
51. Ricklefs RE. Time, species, and the generation of trait variance in clades. *Syst Biol* 2006, 55:151–159.
52. Bokma F. Time, species, and separating their effects on trait variance in clades. *Syst Biol* 2010, 59:602–607.
53. Hozo SP, Djulbegovic B, Hozo I. Estimating the mean and variance from the median, range, and the size of a sample. *BMC Med Res Methodol* 2005, 5:13.
54. Pagel M. Inferring the historical patterns of biological evolution. *Nature* 1999, 401:877–884.

- 1
2
3
4
5
6
7
8
9
10
11
12
13
14
15
16
17
18
19
20
21
22
23
24
25
26
27
28
29
30
31
32
33
34
35
36
37
38
39
40
41
42
43
44
45
46
47
48
49
50
51
52
53
54
55
56
57
58
59
60
61
62
63
64
65
55. Regier JC, Mitter C, Zwick A, Bazinet AL, Cummings MP, Kawahara AY, et al. A large-scale, higher-level, molecular phylogenetic study of the insect order Lepidoptera (moths and butterflies). *PLoS ONE* 2013, 8:e58568.
56. Marshall S. *Flies: the natural history and diversity of Diptera*. New York: Firefly books; 2012.
57. McAlpine JF, Peterson BV, Shewell GE, Teskey HJ, Vockeroth JR, Wood DM, editors. *Manual of nearctic Diptera*. Volume 1. Research Branch, Agriculture Canada; 1981.
58. McAlpine JF, Peterson BV, Shewell GE, Teskey HJ, Vockeroth JR, Wood DM, editors. *Manual of nearctic Diptera*. Volume 2. Research Branch, Agriculture Canada; 1987.
59. Brown BV, Borkent A, Cumming JM, Wood DM, Woodley NE, Zumbado M, editors. *Manual of Central American Diptera*. Volume 1. Ottawa: NRC Research Press; 2009.
60. Wiegmann BM, Trautwein MD, Winkler IS, Barr NB, Kim J-W, Lambkin C, et al. Episodic radiations in the fly tree of life. *Proc Natl Acad Sci* 2011, 108:5690–5695.
61. Caravas J, Friedrich M. Shaking the Diptera tree of life: performance analysis of nuclear and mitochondrial sequence data partitions. *Syst Entomol* 2013, 38:93–103.
62. Gaston KJ. The magnitude of global insect species richness. *Conserv Biol* 1991, 5:283–296.
63. Nicholson DB, Ross AJ, Mayhew PJ. Fossil evidence for key innovations in the evolution of insect diversity. *Proc R Soc Lond B Biol Sci* 2014, 281:20141823.
64. Clapham ME, Karr JA. Environmental and biotic controls on the evolutionary history of insect body size. *Proc Natl Acad Sci USA* 2012, 109:10927–10930.
65. Ingram T, Harmon LJ, Shurin JB. When should we expect early bursts of trait evolution in comparative data? Predictions from an evolutionary food web model. *J Evol Biol* 2012, 25:1902–1910.
66. Costello MJ, Wilson S, Houlding B. Predicting total global species richness using rates of species description and estimates of taxonomic effort. *Syst Biol* 2012, 61:871–883.
67. Loder N. *Insect species body size distributions*. PhD dissertation, University of Sheffield; 1997.
68. Gaston KJ. Body size and probability of description: the beetle fauna of Britain. *Ecol Entomol* 1991, 16:505–508.

- 1
2
3
4
5
6
7
8
9
10
11
12
13
14
15
16
17
18
19
20
21
22
23
24
25
26
27
28
29
30
31
32
33
34
35
36
37
38
39
40
41
42
43
44
45
46
47
48
49
50
51
52
53
54
55
56
57
58
59
60
61
62
63
64
65
69. Blackburn TM, Gaston KJ. The distribution of body sizes of the world's bird species. *Oikos* 1994, 70:127–130.
70. Gaston KJ, Blackburn TM. Are newly described bird species small-bodied? *Biodivers Lett* 1994, 2:16–20.
71. Poulin R. Parasite biodiversity revisited: frontiers and constraints. *Int J Parasitol* 2014, 44:581–589.
72. Gouws EJ, Gaston KJ, Chown SL. Intraspecific body size frequency distributions of insects. *PLoS ONE* 2011, 6:e16606.
73. Cohen JE, Jonsson T, Müller CB, Godfray HCJ, Savage VM. Body sizes of hosts and parasitoids in individual feeding relationships. *Proc Natl Acad Sci* 2005, 102:684–689.
74. Revell LJ, Reynolds RG. A new bayesian method for fitting evolutionary models to comparative data with intraspecific variation. *Evolution* 2012, 66:2697–2707.
75. Ives AR, Midford PE, Garland T. Within-species variation and measurement error in phylogenetic comparative methods. *Syst Biol* 2007, 56:252–270.
76. Felsenstein J. Comparative methods with sampling error and within-species variation: contrasts revisited and revised. *Am Nat* 2008, 171:713–725.
77. Slater GJ, Harmon LJ, Wegmann D, Joyce P, Revell LJ, Alfaro ME. Fitting models of continuous trait evolution to incompletely sampled comparative data using approximate bayesian computation. *Evolution* 2012, 66:752–762.
78. Dorrington GE. On flying insect size and Phanerozoic atmospheric oxygen. *Proc Natl Acad Sci* 2012, 109:E3393–E3393.
79. Finarelli JA, Goswami A. Potential pitfalls of reconstructing deep time evolutionary history with only extant data, a case study using the Canidae (Mammalia, Carnivora). *Evolution* 2013, 67:3678–3685.
80. Arnett RH, Thomas MC, Skelley PE, Frank JH, editors. *American beetles, Volume II: Polyphaga: Scarabaeoidea through Curculionoidea*. Boca Raton, Fla.: CRC Press; 2010.
81. Arnett RH: *American insects: A handbook of the insects of America north of Mexico*. Boca Raton, Fla.: CRC Press; 2000.
82. Arnett RH, Thomas, MC, editors: *American beetles, Volume I: Archostemata, Myxophaga, Adephaga, Polyphaga: Staphyliniformia*. Boca Raton, Fla.: CRC Press; 2000.
83. Bae Y, McCafferty WP. Phylogenetic systematics and biogeography of the Neophemeridae (Ephemeroptera: Pannota). *Aquatic Insects* 1998, 20:35–68.

- 1
2
3
4
5
6
7
8
9
10
11
12
13
14
15
16
17
18
19
20
21
22
23
24
25
26
27
28
29
30
31
32
33
34
35
36
37
38
39
40
41
42
43
44
45
46
47
48
49
50
51
52
53
54
55
56
57
58
59
60
61
62
63
64
65
84. Bailey PT. Pests of Field Crops and Pastures: Identification and Control. Collingwood: CSIRO Publishing; 2007.
85. Barnes JK. Revision of the Helosciomyzidae (Diptera). J Roy Soc New Zealand 1981, 11:45–72.
86. Bechev D, Chandler P. Catalogue of the Bolitophilidae and Diadocidiidae of the world (Insecta: Diptera). Zootaxa 2011 , 2741:38–58.
87. Berenbaum M. Lend me your earwigs. Amer Entomol 2007, 53:196–197.
88. Beutel RG, Leschen R, editors. Handbook of zoology. Volume IV. Arthropoda: Insecta. Part 38. Coleoptera. Beetles. Volume 1: Morphology and Systematics (Archostemata, Adephaga, Myxophaga, Polyphaga partim). Berlin: Walter de Gruyter; 2005.
89. Boeseman M. The Dermaptera in the museums at Leiden and Amsterdam. Leiden: Brill Academic Publishing; 1954.
90. Bouček Z, Noyes JS. Rotoitidae, a curious new family of Chalcidoidea (Hymenoptera) from New Zealand. Syst Entomol 1987, 12:407–412.
91. Brake I, Mathis WN. Revision of the genus *Australimyza* Harrison (Diptera: Australimyzidae). Syst Entomol 2007, 32:252–275.
92. Brock PD, Hasenpusch JW. The complete field guide to stick and leaf insects of Australia. Collingwood: CSIRO Publishing; 2009.
93. Buder G, Klass K-D. The morphology of tarsal processes in Mantophasmatodea. Deutsche Entomol Zeitschr 2013, 60:5–23.
94. Byers GW. *Brachypanorpa sacajawea* n. sp. (Mecoptera: Panorpididae) from the Rocky Mountains. J Kansas Entomol Soc 1990, 63:211–217.
95. Byers GW. The Nannochoristidae of South America (Mecoptera). Univ Kans Sci Bull 1989, 54:25–34.
96. Cambra R, Oliveira A. First Central American record of *Clystopsenella longiventris* (Hymenoptera: Scolebythidae) with comments on the variation of the species. Entomotropica 2003, 18:147–148.
97. Capinera JL, editor. Encyclopedia of entomology, 2nd Edition. Dordrecht: Springer; 2008.
98. Colless D. The genus *Perissomma* (Diptera: Perissommatidae) with new species from Australia and Chile. Australian J Zool 1969, 17:719–728.
99. Darilmaz MC, Kiyak S. A study of the family Spercheidae (Coleoptera) from Turkey. Turk J Zool 2011, 35:441–444.

100. Deitz LL, Wallace MS (team leaders): Treehoppers: Aetalionidae, Melizoderidae, and Membracidae (Hemiptera). 2010. <http://treehoppers.insectmuseum.org>. Accessed 1st Oct 2012.
101. Doganler M. Notes on the species of Tetracampidae with descriptions of some new species from Turkey. Entomofauna 2003, 24:381–396.
102. Domínguez E, Adis J, Arias JR; Hubbard MD; Molineri C; Nieto C et al. Ephemeroptera de América Del Sur. Sofia: Pensoft Publishers; 2006.
103. Early JW, Masner L, Naumann ID, Austin AD. Maamingidae, a new family of proctotrupoid wasp (Insecta: Hymenoptera) from New Zealand. Invert Syst 2001, 15:341–352.
104. Edmunds GF, Jensen SL, Berner L. The mayflies of North and Central America. Minneapolis: University of Minnesota Press; 1976.
105. Espinasa L, Botelho M, Socci K. A new species of genus *Squamigera* (Insecta: Zygentoma: Nicoletiidae) from the Mayan ruins of Palenque, Chiapas, Mexico. J Entomol Nematol 2013, 52:24–28.
106. Esquivel C. The families of insects of Costa Rica- Odonata. In Solís A, editor, Las familias de insectos de Costa Rica. 1997. <http://www.inbio.ac.cr/papers/insectoscr/Texto228.html>. Accessed 1st Jan 2014.
107. Evans JW. The leafhoppers and froghoppers of Australia and New Zealand (Homoptera: Cicadelloidea and Cercopoidea). Australian Museum Memoir 1966, 12:1–347.
108. Evenhuis NL. Family Xenasteiidae. In: Evenhuis NL, editor. Catalog of the Diptera of the Australasian and Oceanian Regions. 2011. <http://hbs.bishopmuseum.org/aocat/hybotidae.html>. Accessed 1st Jan 2013.
109. Fleck G, Li J, Schorr M, Nel A, Zhang X, Lin L, Gao M. *Epiophlebia sinensis* Li & Nel 2011 in Li et al. (2012) (Odonata) newly recorded in North Korea. International Dragonfly Fund Report 2013, 61:1–4.
110. Footitt RG, Adler PH. Insect biodiversity: science and society. Oxford: John Wiley & Sons; 2009.
111. Garrison RW, von Ellenrieder N, Louton JA. Dragonfly genera of the New World: an illustrated and annotated key to the Anisoptera. Baltimore: Johns Hopkins University Press; 2006.
112. Gibson GAP, Read J, Huber JT. Diversity, classification and higher relationships of Mymarommatoidea (Hymenoptera). J Hym Res 2007, 16:51-146.
113. Gillies MT. The african Euthyplociidae (Ephemeroptera), (Exeuthyplociinae subfam. n.). Aquatic Insects 1980, 2:217–224.

- 1
2
3
4
5
6
7
8
9
10
11
12
13
14
15
16
17
18
19
20
21
22
23
24
25
26
27
28
29
30
31
32
33
34
35
36
37
38
39
40
41
42
43
44
45
46
47
48
49
50
51
52
53
54
55
56
57
58
59
60
61
62
63
64
65
114. Greenhalgh M, Ovenden D. The flyfisher's handbook. Machynleth: Coch Y Bonddu Books; 2004.
115. Günther KK. Revision der Familie Cylindrachetidae Giglio-Tos, 1914 (Orthoptera, Tridactyloidea). Deutsche Entomol Zeitschr 1992, 39:233–291.
116. Hayashi F. Convergence of insular dwarfism in damselflies (*Euphaea*) and dobsonflies (*Protohermes*). Freshw Biol 1990, 23:219–231.
117. Heckman CW. Encyclopedia of South American aquatic insects: Ephemeroptera: illustrated keys to known families, genera, and species in South America. Dordrecht: Springer; 2002.
118. Hennemann FH, Conle OV. Revision of Oriental Phasmatodea: The tribe Pharnaciini Günther, 1953, including the description of the world's longest insect, and a survey of the family Phasmatidae Gray, 1835 with keys to the subfamilies and tribes (Phasmatodea: "Anareolatae": Phasmatidae). Zootaxa 2008, 1906:1–316.
119. Hisamatsu S. A review of the Japanese Kateretidae fauna (Coleoptera: Cucujoidea). Acta Entomologica Musei Nationalis Pragae 2011, 51:551–585.
120. Hitchings TR, Staniczek AH. Nesameletidae (Insecta: Ephemeroptera). Fauna of New Zealand 2003, 46:1-72.
121. Hogue CL. Latin american insects and entomology. Berkeley: University of California Press; 1993.
122. Holzenthal RW, Flint OS Jr. Studies of Neotropical caddisflies, LI: systematics of the Neotropical caddisfly genus *Contulma* (Trichoptera: Anomalopsychidae). Smithsonian Contributions to Zoology 1995, 575:1-59
123. Hopkin SP. Biology of the springtails : (Insecta: Collembola). Oxford: Oxford University Press; 1997.
124. Houghton DC. Biological diversity of the Minnesota caddisflies (Insecta, Trichoptera). ZooKeys 2012, 189:1–389.
125. Houston TF. A revision of the bee genus *Ctenocolletes* (Hymenoptera: Stenotritidae). Records of the Western Australian Museum 1983, 10:269–306.
126. Howarth FG, Mull WP. Hawaiian insects and their kin. Honolulu: University of Hawaii Press; 1992.
127. Ivanov VD, Menshutkina T. Endemic Caddisflies of Lake Baikal (Trichoptera Apataniidae). Braueria 1996, 23:13–28.
128. Jäch MA, Balke M. Key to the adults of Chinese water beetle families. In Jäch MA, Ji L, editors. Water beetles of China Vol III. Wien: Zoologisch-Botanische Gesellschaft in Österreich and Wiener Coleopterologenverein. 2003. p. 21–36.

- 1
2
3
4
5
6
7
8
9
10
11
12
13
14
15
16
17
18
19
20
21
22
23
24
25
26
27
28
29
30
31
32
33
34
35
36
37
38
39
40
41
42
43
44
45
46
47
48
49
50
51
52
53
54
55
56
57
58
59
60
61
62
63
64
65
129. Jin Y, Bae Y. The wingless stonefly family Scopuridae (Plecoptera) in Korea. *Aquatic Insects* 2005, 27:21–34.
130. Karpa A. Revision of the Chloropidae of the collection of B.A. Gimmerthal and a check list of Latvian Chloropidae (Diptera). *Latvijas Entomologs* 2001, 38:44–49.
131. Kristensen NP, Scoble M, Karsholt O. Lepidoptera phylogeny and systematics: the state of inventorying moth and butterfly diversity. *Zootaxa* 2007, 1668:699–747.
132. Lenhart P, Dash ST, Mackay WP. A revision of the giant Amazonian ants of the genus *Dinoponera* (Hymenoptera, Formicidae). *J Hym Res* 2013, 31:119–164.
133. Leschen RAB, Beutel RG, Lawrence JF. Handbook of zoology. Arthropoda: Insecta. Coleoptera. Beetles. Volume 2: Morphology and Systematics (Elateroidea, Bostrichiformia, Cucujiformia partim). Berlin: Walter de Gruyter; 2010.
134. Lewis T. Thrips: their biology, ecology and economic importance. London: Academic Press; 1973.
135. Marsh N. Trout stream insects of New Zealand. Aukland: The Halcyon Books; 2004.
136. Mathis WN. World catalog and conspectus on the family Helcomyzidae (Diptera: Schizophora). *Myia* 2011, 12:267–280.
137. Mathis WN. World catalog and conspectus on the family Heterocheilidae (Diptera: Schizophora). *Myia* 2011, 12:281–289.
138. Mathis WN, Sueyoshi M. World catalog and conspectus on the family Dryomyzidae. *Myia* 2011, 12: 207–233.
139. McAlpine DK. Marginidae a new afrotropical family of Diptera (Schizophora: ? Opomyzoidea). *Annals of the Natal Museum* 1991, 32:167–178.
140. McAlpine DK. Review of the Upside-down Flies (Diptera: Neurochaetidae) of Madagascar and Africa, and evolution of neurochaetid host plant associations. *Records of the Australian Museum* 1993, 45:221–239.
141. Mercado M, Elliot S. Taxonomic revision of the genus *Chiloporter* Lestage (Ameletopsidae: Ephemeroptera) with notes on its biology and distribution. *Studies on Neotropical Fauna and Environment* 2005, 40:229–236.
142. Messer AC. *Chalicodoma pluto*: the world's largest bee rediscovered living communally in termite nests (Hymenoptera: Megachilidae). *J Kansas Entomol Soc* 1984, 57:165–168.

143. Michaelis FB, Yule C, Calder A. Family Gripopterygidae. In: Australian Faunal Directory. Australian Biological Resources Study, Canberra. 2011. <http://archive.is/Ckwa#selection-249.0-249.22>. Accessed 1st Jan 2014.
144. Morse JC. New caddisflies (Trichoptera) from Southern Africa. J Kansas Entomol Soc 1974, 47:328–344.
145. Morton KJ. IV. A remarkable new genus and new species of Odonata, of the legion *Podagrion*, Selys, from North Queensland. Transactions of the Royal Entomological Society of London 1914, 62:169–172.
146. Munoz-Quesada F, Holzenthal RW. A new species of *Xiphoncentron* (*Antillotrichia*) from Costa Rica with semiterrestrial immature stages (Trichoptera Xiphoncentronidae). Proceedings of the 8th International Symposium on Trichoptera 1997:355–363.
147. Nagatomi A, Saigusa T, Nagatomi H, Lynebord L. Apsilocephalidae, a new family of orthorrhaphous Brachycera (Insecta, Diptera). Zoological Science (Tokyo) 1991, 8:579–591.
148. Nagatomi A, Nagatomi H. The genus *Austroleptis* from South Chile and Patagonia (Diptera, Rhagionidae). Memoirs of the Kagoshima University Research Center for the South Pacific 1987, 8:139–156.
149. Naskrecki P. 2001. Grasshoppers and their relatives. In: Levine SA, editor. Encyclopedia of Biodiversity 3. San Diego: Academic Press; 2001. p. 247-264.
150. Neboiss A. Atlas of Trichoptera of the SW Pacific-Australian region. Dordrecht: W. Junk; 1986.
151. Nelson LA, Scheffer SJ, Yeates DK. Two new species of sympatric *Fergusonina* Malloch flies (Diptera: Fergusoninidae) from bud galls on high-elevation snow gums (*Eucalyptus pauciflora* Sieb. ex Spreng. complex) in the Australian Alps. Australian J Entomol 2011, 50:356–364.
152. New T, Lienhard C. The Psocoptera of tropical South East Asia. Leiden: Brill Academic Publishing; 2007.
153. Ng PKL, Corlett R, Tan HTW. Singapore biodiversity: an encyclopedia of the natural environment and sustainable development. Singapore: Editions Didier Millet; 2011.
154. Ohl M, Thiele K. Estimating body size in apoid wasps: the significance of linear variables in a morphologically diverse taxon (Hymenoptera, Apoidea). Zoosystematics and Evolution 2007, 83:110–124.
155. Olah J, Johanson KA. Contributions to the systematics of the genera *Dipseudopsis*, *Hyalopsyche* and *Pseudoneureclipsis* (Trichoptera: Dipseudopsidae), with descriptions of 19 new species from the Oriental Region. Zootaxa 2010, 2658:1–37.

- 1
2
3
4
5
6
7
8
9
10
11
12
13
14
15
16
17
18
19
20
21
22
23
24
25
26
27
28
29
30
31
32
33
34
35
36
37
38
39
40
41
42
43
44
45
46
47
48
49
50
51
52
53
54
55
56
57
58
59
60
61
62
63
64
65
156. Oosterbroek P. The families of Diptera of the malay archipelago. Leiden: Brill Academic Publishing; 1998.
157. Otte D, Alexander RD. Australian crickets (Orthoptera: Gryllidae). Philadelphia: Academy of Natural Sciences of Philadelphia; 1983.
158. Palaczyk A, Klasa A, Slowinska-Krysiak I. The family Strongylophthalmyiidae of Poland with catalog of European species (Insecta: Diptera). Genus 2013, 24:425–438.
159. Palmer CM, Siebke K. Cold hardiness of *Apteropanorpa tasmanica* Carpenter (Mecoptera: Apteropanorpidae). J Insect Physiol 2008, 54:1148–1156.
160. Papp L. A study on *Hesperinus* (Walker) with description of a new species (Diptera: Hesperinidae). Acta Zoologica Academiae Scientiarum Hungaricae 2010, 56:347–370.
161. Parker C. A review of *Goerita* (Trichoptera: Goeridae), with description of a new species. Insecta Mundi 1998, 12: 227-238.
162. Parker SP. Synopsis and classification of living organisms. New York: McGraw Hill Book Company, 1982.
163. Pearson RG, Penridge LK. First records of *Prosopistoma sedlaceki* in Australia (Ephemeroptera Prosopistomatidae). J Australian Entomol Soc 1979, 18:362.
164. Penniket JG. Notes on New Zealand Ephemeroptera III. A new family genus and species. Records of the Canterbury Museum 1962, 7:389–398.
165. Penniket JG. Notes on New Zealand Ephemeroptera IV. A new Siphonurid subfamily; Rallidentinae. Records of the Canterbury Museum 1966, 8:163–175.
166. Phillips JS. A revision of New Zealand Ephemeroptera Part 1. Transactions and Proceedings of the Royal Society of New Zealand 1930, 61:271–334.
167. Picker M, Griffiths C, Weaving A. field guide to insects of South Africa. Cape Town: Struik Nature, 2004.
168. Pohl G, Anweiler GC, Schmidt BC, Kondla NG. Annotated list of the Lepidoptera of Alberta, Canada. Zookeys2010, 38:1-549.
169. Pratt RC, Morgan-Richards M, Trewick SA. Diversification of New Zealand weta (Orthoptera: Ensifera: Anostostomatidae) and their relationships in Australasia. Phil Trans Roy Soc B 2008, 363:3427–3437.
170. Prete FR. The praying mantids. Baltimore: Johns Hopkins University Press; 1999.
171. Rentz D. A guide to the katydids of Australia. Collingwood: CSIRO Publishing; 2010.

- 1
2
3
4
5
6
7
8
9
10
11
12
13
14
15
16
17
18
19
20
21
22
23
24
25
26
27
28
29
30
31
32
33
34
35
36
37
38
39
40
41
42
43
44
45
46
47
48
49
50
51
52
53
54
55
56
57
58
59
60
61
62
63
64
65
172. Resh VH, Cardé RT. Encyclopedia of insects, Second Edition. San Diego: Elsevier; 2009.
173. Retana-Salazar A. Species of *Heterothrips* Hood (Terebrantia: Heterothripidae) from Central America. *Ceiba* 2009, 50:10–17.
174. Richards A. Revision of the Raphidophoridae (Orthoptera) of New Zealand Part IV: The Raphidophoridae of Thames Gold Mines. *Trans Roy Soc New Zealand* 1959, 87:27–33.
175. Richards A. The Raphidophoridae (Orthoptera) of Australia: Part 6 Two New Species from Northern Tasmania. *Pacific Insects* 1968, 10:167–176.
176. Riek EF. A Revision of Australian scorpion flies of the family Choristidae (Mecoptera). *Australian J Entomol* 1973, 12:103–112.
177. Rivera AC. Behaviour and ecology of *Hemiphlebia mirabilis* (Odonata: Hemiphlebiidae). 2014. <http://natureglenelg.org.au/wp-content/uploads/2014/02/Behaviour-and-ecology-of-Hemiphlebia-mirabilis-by-Adolfo-Cordero-Rivera-2014.pdf>. Accessed 1st July 2014.
178. Robinson WH. Urban insects and arachnids: a handbook of urban entomology. Cambridge: Cambridge University Press; 2005.
179. Scali V, Milani L, Passmonti M. Revision of the stick insect genus *Leptynia*: description of new taxa, speciation mechanism and phylogeography. *Contributions to Zoology* 2012, 81:25–42.
180. Schneeberg K, Krause K, Beutel RG. The adult head of *Axymyia furcata* (Insecta: Diptera: Axymyiidae). *Arthropod Systematics & Phylogeny* 2013, 71:91–102.
181. Schuh RT, Slater JA. True bugs of the world (Hemiptera:Heteroptera): classification and natural history. Ithaca: Cornell University Press; 1995.
182. Serrano-Meneses MA, Córdoba-Aguilar A, Azpilicueta-Amorín M, González-Soriano E, Székely T. Sexual selection, sexual size dimorphism and Rensch's rule in Odonata. *J Evol Biol* 2008, 21:1259–1273.
183. Shockley FW. Alexiidae Imhoff 1856. *Sphaerosoma* Samouelle 1819. 2008. <http://tolweb.org/Sphaerosoma/65850/2008.06.2>. Accessed 1st July 2014.
184. Shockley FW, Hartley CS, Lord N. Latridiidae. Minute brown scavenger beetles. 2011. <http://tolweb.org/Latridiidae/9172/2011.03.23>. Accessed 1st July 2014.
185. Silsby J. Dragonflies of the world. Collingwood: CSIRO Publishing; 2001.
186. Stewart W. The Australian genus *Diphlebia* Selys (Odonata: Amphipterygidae). I. Taxonomic revision of the adults. *Australian J Zoology Supplementary Series* 1980, 28:1–57.

- 1
2
3
4
5
6
7
8
9
10
11
12
13
14
15
16
17
18
19
20
21
22
23
24
25
26
27
28
29
30
31
32
33
34
35
36
37
38
39
40
41
42
43
44
45
46
47
48
49
50
51
52
53
54
55
56
57
58
59
60
61
62
63
64
65
187. Tojo K, Matsukawa K. A description of the second species of the family Dipteromimidae (Insecta, Ephemeroptera), and genetic relationship of two Dipteromimid mayflies inferred from mitochondrial 16S rRNA gene sequences. *Zoological Science* 2003, 20:1249–1259.
188. Treherne RC. Notes on the Aeolothripidae. *J Entomol Soc British Columbia* 1919, 12:27–33.
189. Walker T. Family Prophalangopsidae (hump-winged grigs) in North America north of Mexico. 2013. In *Encyclopedia of life*. Available at: <http://eol.org/pages/991/overview>. Accessed 1st July 2014.
190. Wall R, Shearer D. *Veterinary ectoparasites: biology, pathology and control*. Oxford: John Wiley & Sons; 2008.
191. Watson JAL. The distributions of the Australian dragonflies (Odonata). *J Australian Entomol Soc* 1974, 13:137–149.
192. Whiting MF, Whiting AS, Hastriter MW, Dittmar K. A molecular phylogeny of fleas (Insecta: Siphonaptera): origins and host associations. *Cladistics* 2008, 24: 677–707.
193. Wiegmann BM. A phylogenetic revision of the family Atelestidae (Diptera: Empidoidea) and its implications for the origin of the Cyclorrhaphous Diptera, MSc Thesis, University of Maryland; 1989.
194. Wiggins GB. *The caddisfly family Phryganeidae (Trichoptera)*. Toronto: University of Toronto Press; 1998.
195. Wiggins GB. The Kitagamiidae, a family of caddisflies new to North America (Trichoptera). *Contributions of the Royal Ontario Museum of Zoology and Palaeontology* 1956, 44:1-10.
196. Wilson KD. Dragonfly groups of conservation interest confined to the Oriental Region. <https://www.yumpu.com/en/document/view/39638885/dragonfly-groups-of-conservation-interest-confined-asia-dragonfly> Accessed 1st July 2014.
197. Zborowski P, Edwards T. *A guide to australian moths*. Collingwood: CSIRO Publishing; 2007.
198. Zloty J, Pritchard G. Larvae and adults of *Ameletus* mayflies (Ephemeroptera Ameletidae) from Alberta. *Can Entomol* 1997, 129:251–289.
199. Zompro O. *Microphasma*, a new stick insect genus from Sri Lanka. (Phasmatodea: Pachymorphinae). *Entomological Journal* 1999, 109:124–127.
200. Zompro O. New phasmids from Venezuela and Ecuador Phasmatodea Neue Phasmiden aus Venezuela und Ecuador Phasmatodea. *Entomologische Zeitschrift* 1998, 10811:456–459.

- 1
2
3
4
5
6
7
8
9
10
11
12
13
14
15
16
17
18
19
20
21
22
23
24
25
26
27
28
29
30
31
32
33
34
35
36
37
38
39
40
41
42
43
44
45
46
47
48
49
50
51
52
53
54
55
56
57
58
59
60
61
62
63
64
65
201. Zompro O. Philippine phasmids from the collection of the Staatliches Museums für Tierkunde, Dresden (Insecta: Phasmatodea). *Reichenbachia* 2001, 34:49-56.
202. Zompro O. Revision of the genera of the Areolatae, including the status of *Timema* and *Agathemera* (Insecta, Phasmatodea). Keltern-Weiler; Goecke & Evers; 2004.
203. Wardhaugh CW. Estimation of biomass from body length and width for tropical rainforest canopy invertebrates: invertebrate biomass measures. *Australian J Entomol* 2013, 52:291–298.
204. Novotny V, Kindlmann P. Distribution of body sizes in arthropod taxa and communities. *Oikos* 1996, 75:75–82.
205. Hodkinson ID, Casson DS. Patterns within patterns: abundance-size relationships within the Hemiptera of tropical rain forest or why phylogeny matters. *Oikos* 2000, 88:509–514.
206. D'Agostino RB. Transformation to normality of the null Distribution of g_1 . *Biometrika* 1970, 57:679–681.
207. R Development Core Team. R: A Language and Environment for Statistical Computing. 2011.
208. Komsta L, Novomestky F. moments: Moments, cumulants, skewness, kurtosis and related tests. R package version 0.13. 2012.
209. Revell LJ. Two new graphical methods for mapping trait evolution on phylogenies. *Methods Ecol Evol* 2013, 4:754–759.
210. Revell LJ. phytools: an R package for phylogenetic comparative biology (and other things). *Methods Ecol Evol* 2012, 3:217–223.
211. Blomberg SP, Garland T, Ives AR. Testing for phylogenetic signal in comparative data: behavioral traits are more labile. *Evolution* 2003, 57:717–745.
212. Orme CDL, Freckleton RP, Thomas GH, Petzoldt T, Fritz SA, Isaac NJB, Pearse W. caper: Comparative Analyses of Phylogenetics and Evolution in R. 2012.
213. Harmon LJ, Weir JT, Brock CD, Glor RE, Challenger W. GEIGER: investigating evolutionary radiations. *Bioinformatics* 2008, 24:129–131.
214. Pennell MW, Eastman JM, Slater GJ, Brown JW, Uyeda JC, FitzJohn RG, Alfaro ME, Harmon LJ. geiger v2.0: an expanded suite of methods for fitting macroevolutionary models to phylogenetic trees. *Bioinformatics* 2014, 30:2216–2218.
215. Butler MA, King AA. Phylogenetic comparative analysis: a modeling approach for adaptive evolution. *Am Nat* 2004, 164:683–695.

216. Rabosky DL. Automatic detection of key innovations, rate shifts, and diversity-dependence on phylogenetic trees. PLoS ONE 2014, 9:e89543.

Additional File

Additional File 1: Supplementary Material, containing:

Figure S1. Phylogenetic plot of (log) size traits. A) log maximum body length; B) log minimum body length. Ancestral reconstruction of internal nodes based on a BM process (ancML) (Revel 2013). Lower bars denote the minimum and maximum values of observed traits (ln(mm)); coloration on a red to blue scale. Terminal bars denote membership of major clades; colors as in Figure 1.

Figure S2. Maximum credible model set from Bayesian Analysis of Macroevolutionary Mixtures (BAMM) corresponding to 95% of the overall model likelihood. Models are listed in order of frequency (f) of obtaining model in the post burnin set corresponding to their inferred probability (listed from top, left to right). Coloration and tree orientation are as in Figure 4.

Table S1. Compiled body length data for included terminal groups with references. Species richness estimates taken from (Rainford *et al.*, 2014); SI. Where multiple references are given they refer respectively to the minimum /maximum values. Taxonomic alterations from (Rainford *et al.*, 2014) are listed in notes.

Table S2. Outputs of Macrocaic analysis of relationship between PIC of diversification rate (measured as PDI) and mean log size for major clades.

Table S3. Parameter estimates and relative likelihoods of alternative models of mean body size for major orders of Holometabola (including terminal standard error). Models and parameters denoted as in Table 3.

1
2
3
4
5
6
7
8
9
10
11
12
13
14
15
16
17
18
19
20
21
22
23
24
25
26
27
28
29
30
31
32
33
34
35
36
37
38
39
40
41
42
43
44
45
46
47
48
49
50
51
52
53
54
55
56
57
58
59
60
61
62
63
64
65

Tables

Table 1: Tests of phylogenetic signal within major clades incorporating within-terminal standard error.

Taxa	Blomberg's K	Sigma ² parameter	rate Model log likelihood	P randomization test
Hexapoda	0.8870	0.002368	-778.95	<0.001
Holometabola	0.6864	0.002694	-515.43	<0.001
Paraneoptera	1.3166	0.001436	-117.07	<0.001
Polyneoptera	0.8144	0.002122	-66.26	<0.001
Palaeoptera	1.7806	0.001467	-40.192	<0.001
Entognatha	1.1244	0.002574	-15.711	0.0247

Table 2: Macrocaic analysis of contrasts in RRD and vs. mean-of-logs size for major hexapod clades (Fig. 3).

Data shown are the results of parametric bootstrap, with 50,000 replicates, Shown are the observed quartile ranges (Obs. QR) and those of the Null tip-randomized data (NULL QR).

Taxa	N	Estimate	(Adj) R ²	SE	t	p	Obs. QR		NULL QR	
							2.5%	97.5%	2.5%	97.5%
Hexapoda	773	4.538	0.004203	2.219	2.045	0.0412*	1.886	5.383	-2.127	2.106
Holometabola	507	4.415	0.003232	2.715	1.626	0.105	1.246	5.580	-2.944	2.969
Non-Holometabola	265	5.416	0.003874	3.801	1.425	0.155	1.927	7.304	-3.159	3.178
Paraneoptera	126	11.759	0.02523	5.696	2.064	0.0411*	5.495	14.35	-7.172	7.079
Polynoptera	64	9.135	0.009866	7.139	1.28	0.205	1.256	14.02	-9.385	9.407
Palaeoptera	57	-8.866	-0.00021	8.919	-0.994	0.325	-12.63	-2.987	-6.800	6.986
Ectognatha	11	12.43	-0.04417	17.00	0.731	0.481	5.118	17.94	-24.74	23.82

Table 3: Parameter estimates and relative likelihoods for models of mean-of-logs body size incorporating within-terminal standard error.

Models and relevant parameters are denoted as follows: BM: Brownian motion (Sigma squared: ML estimate of rate of the underlying size evolution, z0: ML estimate of value for the root state); EB: Early burst model (a: exponential rate scale for relationship through time); Delta: Pagel's delta rate change through time model (delta: tree scaling parameter); SSP: Single stable peak Ornstein-Uhlenbeck model with centralizing tendency towards an optimum (alpha: strength of central attraction); lambda; Pagel's lambda measuring deviation of inter-tip covariance matrix from expectations of BM (lambda: multiplication factor applied to the off-diagonal covariance matrix elements maximizing similarity to BM); WN: white noise non-phylogenetic model with all data drawn from a common distribution. Also given are log likelihood values of the observed data (LnLik), number of parameters (k), and AICc values, deviation from optimal model (Delta AiCc), and Akaike weights.

Clade	Model	Sigma squared	z0	a/ delta / alpha/ lambda	LnLik	k	AICc	Delta AiCc from optimal model	Akaike weights
Hexapoda	BM	0.002403	1.749		-779.4	2	1562.7	21.031	0.00003
	EB	0.002404	1.748	-1e-06*	-779.4	3	1564.7	23.051	0.00001
	delta	0.002196	1.766	1.129	-779.1	3	1564.3	22.627	0.00001
	SSP	0.002666	1.764	0.000591	-778.0	3	1562.1	20.434	0.00004
	lambda	0.001957	1.759	0.92093	-767.8	3	1541.7	0	0.9991
	WN	0.8985	1.946		-1057.3	2	2118.7	576.99	0.0000
Holometabola	BM	0.002726	1.846		-515.4	2	1034.8	17.571	0.0002

	EB	0.002727	1.846	-1e-06*	-515.4	3	1036.9	19.600	0.0001
	delta	0.001787	1.802	1.881	-511.2	3	1028.5	11.265	0.0035
	SSP	0.003613	1.830	0.001923	-510.7	3	1027.4	10.170	0.0061
	lambda	0.002138	1.845	0.89028	-505.6	3	1017.3	0	0.9901
	WN	0.6498	1.803		-611.9	2	1227.8	210.52	0.0000
Paraneoptera	BM	0.001469	1.132		-117.0	2	238.2	0	0.3939
	EB	0.001518	1.130	-0.000111	-117.0	3	240.3	2.094	0.1382
	delta	0.001559	1.119	0.9031	-117.0	3	240.1	1.9781	0.1465
	SSP	0.001469	1.132	0.00	-117.0	3	240.3	2.0983	0.1379
	lambda	0.001368	1.139	0.9343	-116.7	3	239.7	1.5276	0.1835
	WN	0.5961	1.531		-147.4	2	299.0	60.78	0.0000
Polyneoptera	BM	0.002121	2.759		-66.26	2	136.7	0.1955	0.2922
	EB	0.002121	2.759	-1e-06*	-66.26	3	138.9	2.3961	0.0972
	delta	0.001389	2.822	2.186	-65.06	3	136.5	0	0.3221
	SSP	0.003247	2.812	0.002286	-65.60	3	137.6	1.081	0.1876
	lambda	0.002005	2.765	0.9636	-66.22	3	138.8	2.334	0.1003
	WN	0.5465	3.045		-72.66	2	149.5	12.99	0.0005
Palaeoptera	BM	0.001485	2.918		-40.18	2	84.58	0	0.3195
	EB	0.002088	2.917	-0.001169	-40.06	3	86.57	1.991	0.1181
	delta	0.002322	2.938	0.5462	-39.51	3	85.46	0.8857	0.2052
	SSP	0.001485	2.918	0.00	-40.18	3	86.80	2.226	0.1050
	lambda	0.00119	2.928	0.8993	-39.30	3	85.05	0.4729	0.2522
	WN	0.7646	3.060		-74.55	2	153.3	68.73	0.0000
Entognatha	BM	0.002414	1.074		-15.71	2	36.75	0	0.5003
	EB	0.01257	1.048	-0.006225	-15.16	3	39.31	2.561	0.1390

	delta	0.002921	1.070	0.6378	-15.58	3	40.16	3.407	0.0911
	SSP	0.002414	1.074	0.00	-15.71	3	40.42	3.667	0.0800
	lambda	0.002414	1.074	1	-15.71	3	40.42	3.667	0.0800
	WN	1.0335	0.888		-17.23	2	39.79	3.035	0.1097

1
2
3
4
5
6
7
8
9
10
11
12
13
14
15
16
17
18
19
20
21
22
23
24
25
26
27
28
29
30
31
32
33
34
35
36
37
38
39
40
41
42
43
44
45
46
47
48
49
50
51
52
53
54
55
56
57
58
59
60
61
62
63
64
65

Figure Legends

Figure 1. Histograms of raw body length data and estimated mean-of-logs lengths (D; corrected for clade richness).

Histograms of A) Minimum log body size (ln(mm), Skewness = 0.3333) B) Maximum log body size (ln(mm), Skewness = 0.07517) C) Calculated mean log body size; for terminal groups used in this analysis (ln(mm), Skewness = 0.2102), D) Mean size with each terminal group represented proportionally to its richness (ln(mm), Skewness = -0.0285). Curves on upper panels reflect normal distributions with the same mean and standard deviation as the observed data. Colors in lower panels show breakdown of size classes by major taxonomic group; Red - Holometabola, Green - Paraneoptera, Magenta - Polyneoptera, Cyan - Palaeoptera, Black - Basal insects, Grey - Entognatha.

Figure 2. Phylogenetic plot of (log) size traits. A) mean-of-logs body length; B) estimated standard deviation.

Ancestral reconstruction of internal nodes based on a BM process (ancML) (Revel 2013). Lower bars denote the minimum and maximum values of observed traits (ln(mm)); coloration on a red to blue scale. Terminal bars denote membership of major clades; colors as Figure 1.

Figure 3. Plots of Standardized contrasts for richness (RDD) and body length (ln(mm)).

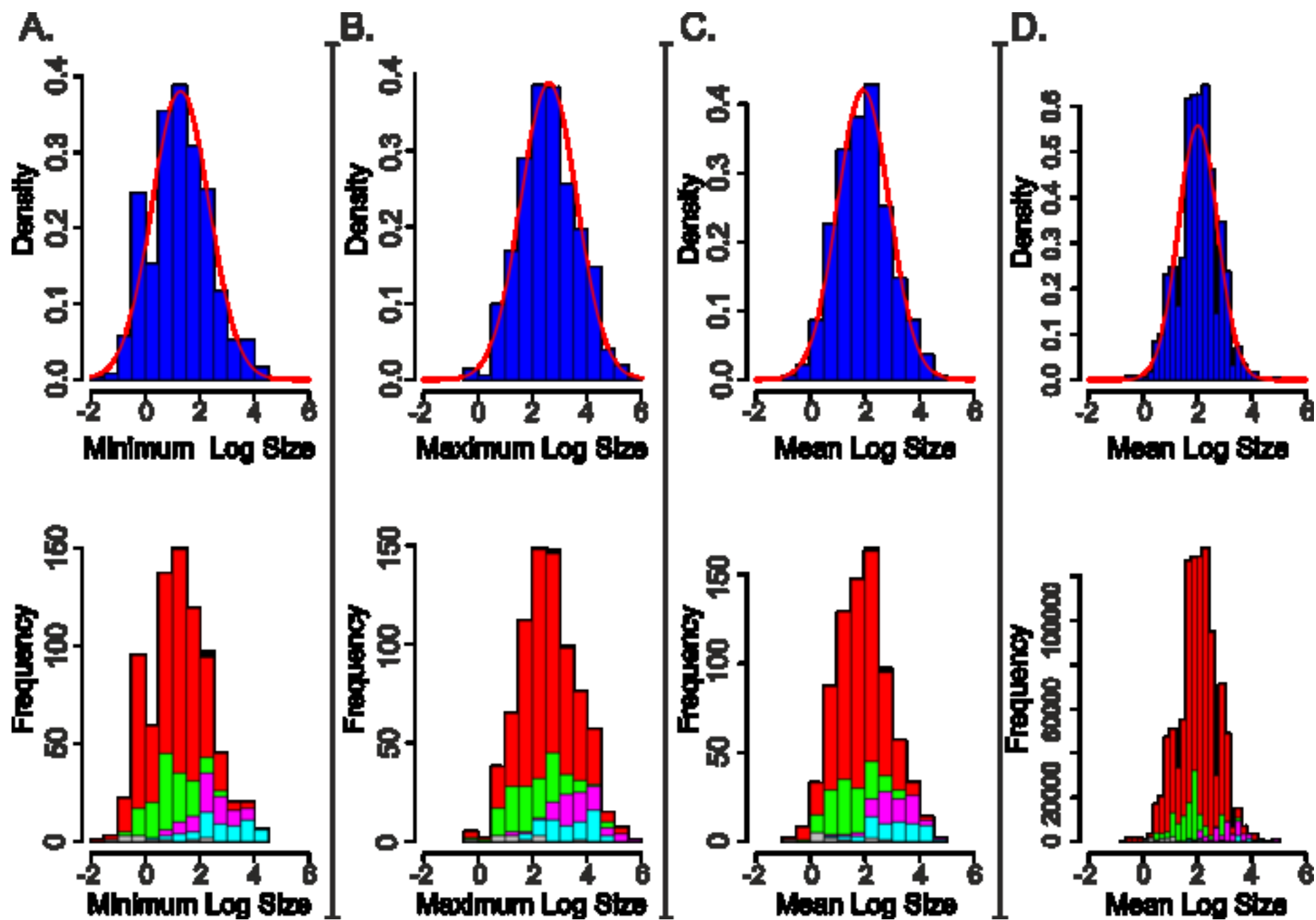
Solid lines denote the relationship inferred from the mean values in Macrocaic. Dashed colored lines are the 95% CI based on 50,000 parametric bootstraps taking into account the variance present among terminal groups. Dotted

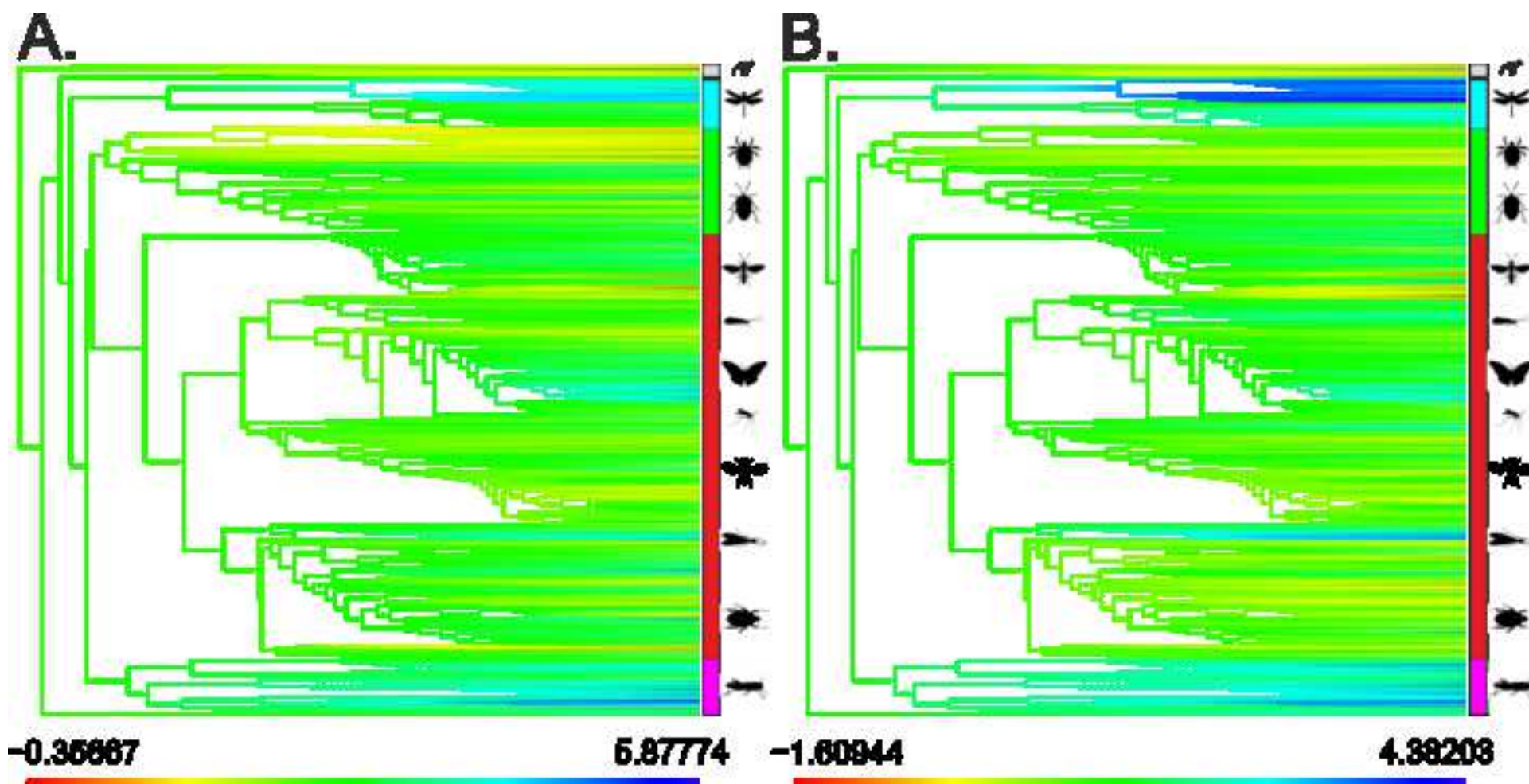
black lines denote the equivalent null intervals calculated on tip randomizations.

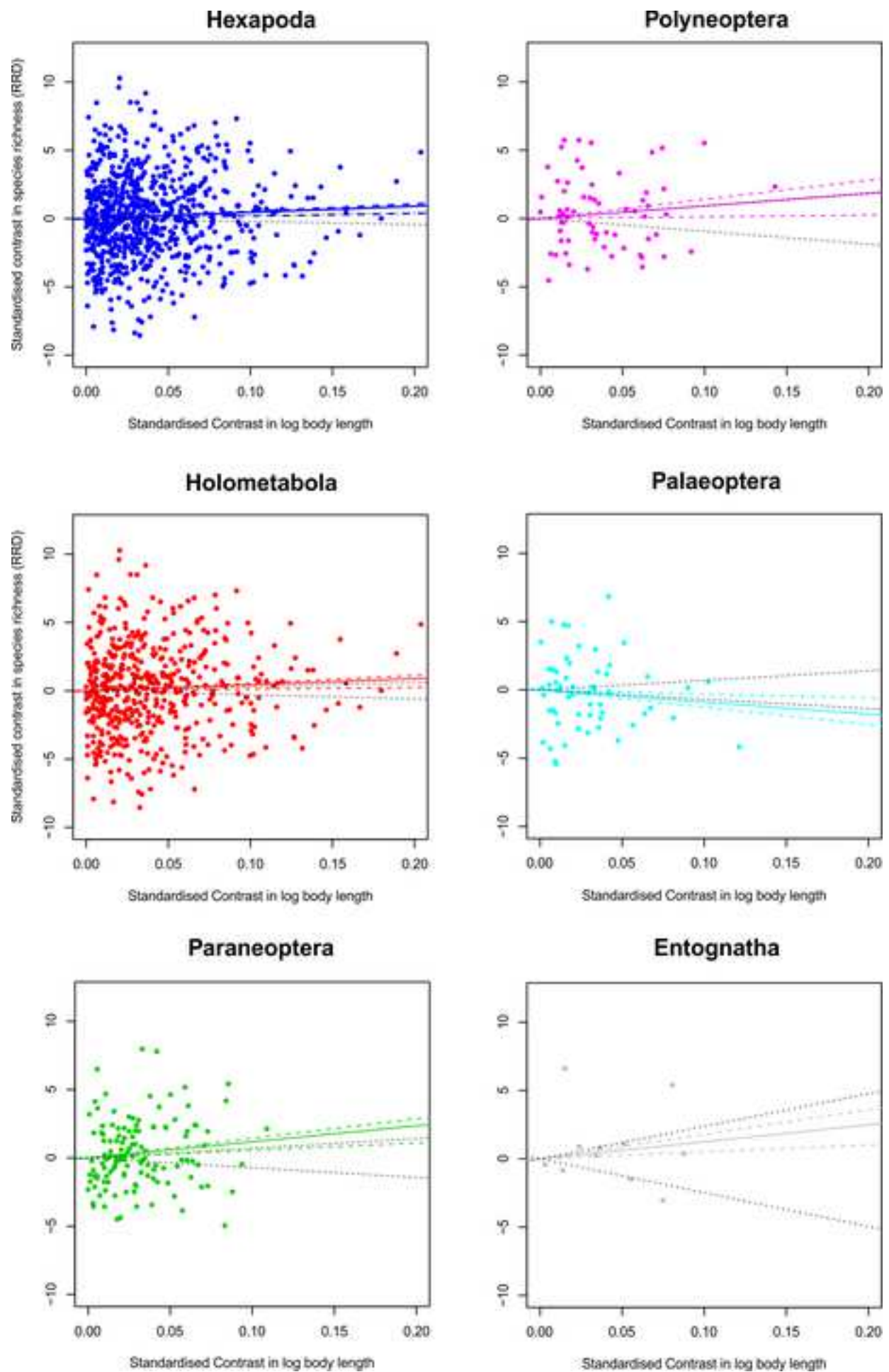
Statistical information for relationships in Table 3.

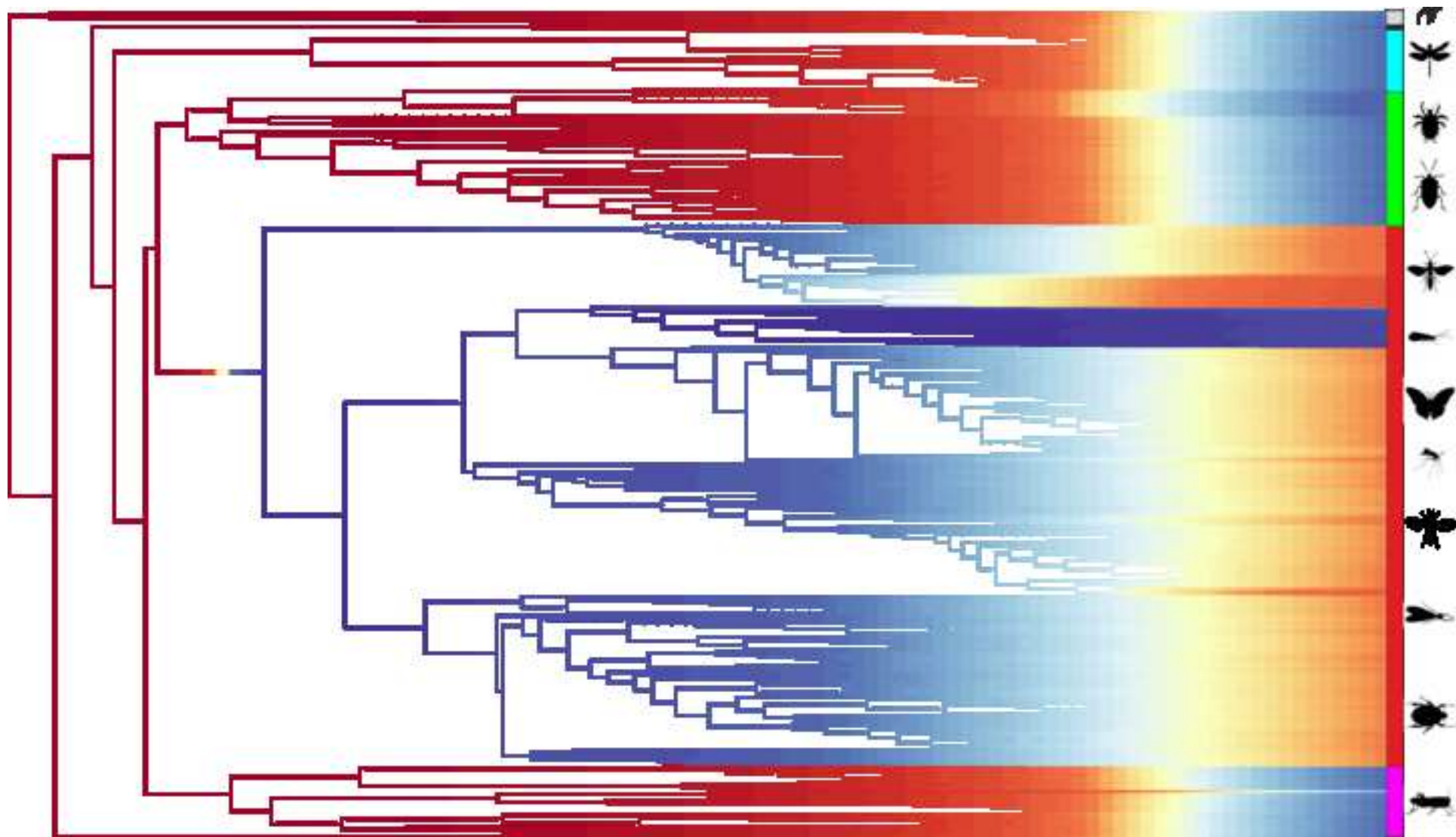
**Figure 4. Outputs of Bayesian Analysis of Macroevolutionary Mixtures (BAMM)
analysis of log mean body size data.**

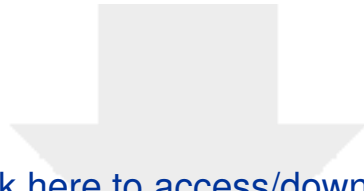
Mean rate of evolution for branches across all post-burnin samples (ln(mm)
per million years), denoted by branch coloration (red being high).











Click here to access/download
Supplementary Material
Supplementary Materialv2.docx

