



UNIVERSITY OF LEEDS

This is a repository copy of *Chlorpromazine for schizophrenia: a Cochrane systematic review of 50 years of randomised controlled trials*.

White Rose Research Online URL for this paper:
<http://eprints.whiterose.ac.uk/916/>

Article:

Adams, C.E., Rathbone, J., Thornley, B. et al. (4 more authors) (2005) Chlorpromazine for schizophrenia: a Cochrane systematic review of 50 years of randomised controlled trials. *BMC Medicine*, 3 (15). ISSN 1741-7015

<https://doi.org/10.1186/1741-7015-3-15>

Reuse

See Attached

Takedown

If you consider content in White Rose Research Online to be in breach of UK law, please notify us by emailing eprints@whiterose.ac.uk including the URL of the record and the reason for the withdrawal request.



eprints@whiterose.ac.uk
<https://eprints.whiterose.ac.uk/>

Research article

Open Access

Chlorpromazine for schizophrenia: a Cochrane systematic review of 50 years of randomised controlled trials

Clive Elliott Adams*¹, John Rathbone¹, Ben Thornley¹, Mike Clarke², Jo Borrill³, Kristian Wahlbeck⁴ and A George Awad⁵

Address: ¹Cochrane Schizophrenia Group, Academic Department of Psychiatry and Behavioural Sciences, University of Leeds, 15 Hyde Terrace, Leeds, LS2 9LT, UK, ²UK Cochrane Centre, Summertown Pavilion, Middle Way, Summertown, Oxford, OX2 7LG, UK, ³Safer Custody Group, HM Prison Service, Abell House, John Islip Street, London, SW1P 4LH, UK, ⁴STAKES/Vasa Central Hospital, Department of Psychiatry, FIN-65130 Vaasa, Finland and ⁵University of Toronto, Humber River Regional Hospital, Keele Street Site, 2175 Keele Street, Toronto, Ontario, M6M 3Z4, Canada

Email: Clive Elliott Adams* - ceadams@cochrane-sz.org; John Rathbone - jrathbone@cochrane-sz.org; Ben Thornley - Ben-and-alli@Thornley2000.fsnet.co.uk; Mike Clarke - mclarke@cochrane.co.uk; Jo Borrill - mhf@mentalhealth.org.uk; Kristian Wahlbeck - kristian.wahlbeck@stakes.fi; A George Awad - gawad@hrrh.on.ca

* Corresponding author

Published: 17 October 2005

Received: 16 May 2005

BMC Medicine 2005, 3:15 doi:10.1186/1741-7015-3-15

Accepted: 17 October 2005

This article is available from: <http://www.biomedcentral.com/1741-7015/3/15>

© 2005 Adams et al; licensee BioMed Central Ltd.

This is an Open Access article distributed under the terms of the Creative Commons Attribution License (<http://creativecommons.org/licenses/by/2.0>), which permits unrestricted use, distribution, and reproduction in any medium, provided the original work is properly cited.

Abstract

Background: Chlorpromazine (CPZ) remains one of the most common drugs used for people with schizophrenia worldwide, and a benchmark against which other treatments can be evaluated. Quantitative reviews are rare; this one evaluates the effects of chlorpromazine in the treatment of schizophrenia in comparison with placebo.

Methods: We sought all relevant randomised controlled trials (RCT) comparing chlorpromazine to placebo by electronic and reference searching, and by contacting trial authors and the pharmaceutical industry. Data were extracted from selected trials and, where possible, synthesised and random effects relative risk (RR), the number needed to treat (NNT) and their 95% confidence intervals (CI) calculated.

Results: Fifty RCTs from 1955–2000 were included with 5276 people randomised to CPZ or placebo. They constitute 2008 person-years spent in trials. Meta-analysis of these trials showed that chlorpromazine promotes a global improvement ($n = 1121$, 13 RCTs, RR 0.76 CI 0.7 to 0.9, NNT 7 CI 5 to 10), although a considerable placebo response is also seen. People allocated to chlorpromazine tended not to leave trials early in both the short ($n = 945$, 16 RCTs, RR 0.74 CI 0.5 to 1.1) and medium term ($n = 1861$, 25 RCTs, RR 0.79 CI 0.6 to 1.1). There were, however, many adverse effects. Chlorpromazine is sedating ($n = 1242$, 18 RCTs, RR 2.3 CI 1.7 to 3.1, NNH 6 CI 5 to 8), increases a person's chances of experiencing acute movement disorders, Parkinsonism and causes low blood pressure with dizziness and dry mouth.

Conclusion: It is understandable why the World Health Organization (WHO) have endorsed and included chlorpromazine in their list of essential drugs for use in schizophrenia. Low- and middle-income countries may have more complete evidence upon which to base their practice compared with richer nations using recent innovations.

Background

Chlorpromazine is in the World Health Organization (WHO) list of essential drugs [1]. It is estimated that 24 million people currently suffer from schizophrenia [2], the majority of whom live in low or middle-income countries. Until recently, it would have been common practice for anyone with schizophrenia to have been treated with chlorpromazine at some point [3,4]. Despite well-documented adverse effects, and the advent of a new generation of antipsychotic drugs, chlorpromazine remains one of the most commonly used and inexpensive treatments for people with schizophrenia [5]. In Africa, chlorpromazine was widely used [6], although we have failed to identify any more recent surveys. In India chlorpromazine is commonly prescribed, and in South East Asia the older generation of antipsychotics are used to treat the majority of people with schizophrenia [7]. In 2003, in the UK, chlorpromazine was the most frequently prescribed of the first generation 'typical' antipsychotic drugs, where, at that time, the 'typical' group of antipsychotics accounted for 44% of all anti-psychotic prescriptions [8].

As well as its almost universal use in clinical practice, chlorpromazine is a benchmark by which other treatments are evaluated [9]. There are many qualitative reviews of chlorpromazine but few attempts have been made to quantify data from randomised controlled trials (RCTs) [10,9,11]. An up-to-date quantitative review of the effects of this old, highly prevalent treatment is long overdue. 50 years after its formulation, the evidence should be more complete than when the drug was under patent.

Methods

Inclusion criteria

The inclusion criteria were defined and disseminated for peer review within a Cochrane protocol first published 1998 [12]. Articles were included if they reported RCTs where the participants had schizophrenia or non-affective serious/chronic mental illness, and where the interventions included chlorpromazine (any dose or mode of administration) versus placebo or no treatment.

Identification of relevant trials

We identified relevant randomised trials by searching the Cochrane Schizophrenia Group's register of trials (June 2002), with a phrase designed to identify the many ways of naming chlorpromazine [see Additional file 1]. Citations in all identified articles were inspected for further trials. Rhône-Poulenc Rorer (the original distributors of chlorpromazine) was contacted to request access to archive material, and Dr RA Pargiter (Hobart, Tasmania) donated a large series of May and Baker chlorpromazine reports from 1955 to 1973.

Data extraction and study appraisal

All electronic records identified were independently inspected by BT, CA and JR. The reliability of selection processes and data extraction was checked using a 10% random sample. Full reports of studies of agreed relevance were obtained, quality rated [13], and data relating to methods, participants, interventions and outcomes, extracted. Any disagreement was discussed and decisions documented. If there were outstanding issues, the authors of the studies were contacted where possible to help resolve problems.

Statistical methods

Dichotomous and continuous data were not used if over half of those randomised did not contribute to the outcome due to early attrition from the study or non-compliance. Dichotomous data were combined using a random effects Relative Risk (RR) [14]. Numbers needed to treat/harm (NNT/H) [10] were also calculated, and χ^2 tests for heterogeneity were performed. Where <50% of people were lost to follow-up at the end of a trial, 'worst case' intention-to-treat analyses were undertaken by assuming that those who had left a trial early had had a poor outcome. The sensitivity of the final results to this assumption was tested. Continuous data were excluded if derived from scales of unknown validity and if totals or measures of variance were not reported. Summation was not attempted where continuous data were too skewed [15]. All estimates of effect are presented with their 95% confidence intervals (CI).

Results

Electronic searches identified over 1000 records, most of which were ineligible. Full copies of 351 citations were obtained for detailed scrutiny, including a further 50 papers identified from citations. Of these, 302 papers were excluded and 99 reports of the 50 RCTs included (Table 1). Studies were mainly excluded due to lack of random allocation (68%). However, 43 randomised trials (30%) reported irrelevant outcomes, such as serum levels of chlorpromazine breakdown products, or presented data in such a way as to make the outcomes unintelligible or impossible to use.

Study quality

All 50 included studies reported the use of random allocation; only 4 were explicit about the process used. Two used the toss of a coin [16,17], and 2 used random number tables [18,19]. Citations to all included and excluded studies are available in the full Cochrane Review [12], otherwise the names and dates cited in this text relate to Table 1. A further 2 trials [20,21] described some form of allocation concealment (sealed envelopes in both cases). The other 44 studies gave little assurance that bias was minimised during the allocation procedure and this

Table 1: Included studies.

INCLUDED STUDIES (date of publication)	METHODS			PARTICIPANTS			INTERVENTIONS						OUTCOMES						
	Randomised	Double-blind	Three+ arm study	Duration (weeks)	Only Schizophrenia	History	Total number of participants	Age (years)	Sex	CPZ dose (mg/day)	Number allocated CPZ	Number allocated placebo	Leaving the study early	Global improvement	Mental State	Side-effects	Global clinical state	Behaviour	Relapse
1955 Hall	●	●		9	●	C	175	20-59	M+F	750 max	87	88	●	●		●		●	
Vaughan	●	●		U/K		C	48	M = 43	F	75-450	24	24		●					
1956 Shepherd	●	U/K	●	6	●	C	24	27-52	F	300	8	8	●	●					
1958 Abrams	●			4	●	C	40	20-55	F	200-600	20	20	●						
Grygier	●	U/K		24	●	C	30	m = 50	F	150	15	15		●					
Hine	●	●		20	●	C	22	30-50	F	750 max	11	11		●		●			
Simon	●		●	4		U/K	80	m = 31	U/K	200-1200	20	0	●						
1959 Baker	●	●	●	5		C	25	33-79	F	150-300	7	7	●	●		●			
Flemming	●	●	●	26	●	C	63	m = 58	F	75-300	21	21				●		●	
Walsh	●	U/K		8	●	C	66	27-50	F	75-300	22	22		●					
1960 Enghardt	●	●	●	78	●	U/K	173	18-40	U/K	50-800	62	56	●						●
Hamilton	●	●	●	8	●	C	54	m = 38	M	300	18	18	●						
Payne	●	●	●	6	●	C	21	23-73	M	25-100	7	7							
Somerville	●	●	●	6		C+A	60	24-58	F	200-800	15	30	●	●					●
1961 Clark	●	●	●	24	●	C	60	26-52	F	200-800	20	20		●					
Lorr	●	●	●	12		A	308	<50	M	50-100	63	61	●						
Kurland	●	●	●	6		A	277	18-61	M+F	300	33	72	●	●					
Schiele	●	●	●	16	●	C	80	m = 80	M	200-1000	20	20	●		●	●			
Smith	●	●	●	14	●	C	30	m = 42	M+F	150-600	13	15							●
1963 Bishop	●	●	●	10	●	C	30	U/N	M+F	800	10	10	●	●					
Fink	●	U/K		6		S	311	m = 31	M+F	1200	51	44	●						
1964 NIMH	●	●	●	6	●	A	463	16-45	M+F	200-1600	112	125	●						
1966 Reardon	●	●	●	4	●	A	34	U/K	M+F	300-600	11	12	●	●					
Saretsky	●	●	●	12	●	A	40	<55	M	400	20	20	●						
1967 Clark	●	●	●	10	●	C	72	25-55	F	678 m	51	21	●						
Letemendia	●	●	●	39		C	28	<65	M	300	14	14	●						
1968 Clark a	●	●	●	14	●	C	72	20-60	F	1000 max	18	36	●	●					
Clark b	●	●	●	16	●	C	69	20-60	F	1000 max	23	23	●						
Cohen	●	●	●	60	●	C	126	18-42	M+F	180	42	42	●						
Prien	●	●	●	24	●	C	838	19-55	M+F	2000	208	212		●		●	●	●	●
										300	208								
1969 Tetreault	●	●	●	12	●	C	45	m = 50	F	300-600	15	15	●		●	●		●	●
1970 Clark a	●	●	●	12	●	C	44	22-55	M+F	200-1000	15	14	●	●		●	●	●	●
Clark b	●	●	●	24	●	C	71	21-60	F	150-600	54	18	●						●
1971 Clark	●	●	●	4	●	C	86	21-45	M+F	200-1000	23	21	●	●					
1972 Clark	●	●	●	12	●	C	55	21-60	M+F	1000	19	18	●	●					
Serafetinedes	●	●	●	12	●	C	57	21-61	M+F	1000 max	14	13	●	●					
1973 Hogarty	●	●	●	156	●	S	374	18-53	M+F	270 m	192	182	●						●
Klein	●	●	●	6	●		88	17-61	M+F	300-1200	46	42	●						
1974 Reschke	●	●	●	0.1	●	A	50	19-57	M+F	25 im	10	11	●	●					
1975 Ban	●	●	●	12	●	C+A	30	17-46	M+F	200-800	10	10	●	●					
Hamill	●	●	●	0.7	●	A	44	18-55	M+F	306-475	22	22	●						
1977 Clark	●	●	●	12	●	C	27	23-61	M+F	1000	9	9	●	●					
Spohn	●	●	●	6+	●	U/K	40	18-55	M+F	200 min	20	20							●
1978 Rappaport	●	●	●	U/K	●	A	127	16-40	M	300-900	53	74	●						●
1981 Peet	●	●	●	12	●	U/K	53	m = 51	M+F	400 max	16	18	●						●
1982 Nishikawa	●	●	●	156	●	S	55	m = 33	M+F	75	10	10							●
1986 Zuoze	●	●	●	4	●	C	60	m = 36	U/K	450 m	20	20							●
1990 Chouinard	●	●	●	4	●	A	62	19-62	M+F	300-1200	21	21	●	●					●
1991 Borison	●	●	●	4	●	A	30	22-58	M	400-1600	9	10			●				
2000 Cooper	●	●	●	8	●	C	159	18-42	M+F	600	53	53	●	●					

Key: ● = Yes; U/K = Unknown; C = Chronic; A = Acute; M = Male; F = Female; m = Mean; im = Intramuscular injection.

Table 2: Results relating to clinical change and study attrition.

	Months	Number of trials	Chlorpromazine events/total participants	Placebo events/total participants	RR (95% CI)	Test for heterogeneity
Relapse	6–24	3	108/202	159/192	0.65 (0.5–9.0)	Chi ² 7.83, df 2, p = 0.02 I ² = 74.5%*
No global improvement	2–6	13	470/654	406/467	0.76 (0.7–0.9)	Chi ² 25.4, df 12, p = 0.01 I ² = 52.8%
Leaving the study early	6–24	2	38/254	33/238	1.09 (0.7–1.6)	Chi ² 0.47, df 1, p = 0.49 I ² = 0%

* no clear cause of heterogeneity found on close re-inspection of trials

may mean that this review overestimates the effect of chlorpromazine [22]. Twenty-eight (56%) of the trials adequately described their attempts to be double-blind, with two [20] and [23] reporting how successful these attempts were. Two studies [18] and [24] gave no indication that blinding had been attempted. Other trials indicated that an attempt at blinding had been made, but they gave no description of how this had been done. The description of participants who left studies early was poor; 12 of the 50 included studies providing no details of treatment withdrawals. Presentation of data was also poor. Trials frequently presented both dichotomous and continuous data in graphs, or reported inexact statistical measures of probability, for example $p > 0.05$. This often made it impossible to extract raw data for synthesis. Continuous scale data were frequently collected in the trials, but were often poorly reported; 30/50 trials did not report standard deviations and 9/42 did not present any data from the scales they had used.

Study designs

The studies were mostly either 6 or 12 weeks long, but the range was large (24 h to 3 years). The great majority of participants in nearly all of the trials were diagnosed as suffering from schizophrenia. These studies reported on >5276 people, 3318 of whom were allocated to chlorpromazine-placebo comparison. Eleven of the 50 trials described the diagnostic criteria used, or the symptoms required for people to be included. Otherwise entry to most of the included studies was based on a pragmatic diagnosis of schizophrenia. The trials ranged in size from 21 [25] to 838 participants [26]. Most people were hospitalised at the time of the study. The lowest dose of chlorpromazine tested was 25 mg/day [27] and the highest 2000 mg/day [26]. One trial [28] included both a placebo and a no-drug group, which we combined. Another study included both a placebo group and a "routine conventional hospital treatment" group [26]. Data from the latter were not used in this review, as people in this group will probably have been given antipsychotic drugs.

Outcomes

Table 2 presents the main results of this review. These intention-to-treat data are derived by synthesising homogeneous trial findings. The results remain essentially unchanged when we only used data from participants who completed the studies. The data show no clear pattern indicative of publication bias when sorted by study size and effect [29].

Data on global improvement (a dichotomised impression of *change*), in the period up to 6 months favours chlorpromazine (n = 1121, 13 RCTs, RR No global improvement 0.76 CI 0.7 to 0.9) but is moderately heterogeneous (I² = 52.8%). Global severity of illness at study end (a dichotomised impression of clinical *state*) also favours chlorpromazine (n = 778, 5 RCTs, RR severely ill 0.67 CI 0.5 to 0.8, NNT 4 CI 3 to 10; Figure 1). Very few studies present usable data directly relating to end point mental state. The continuous data that are available (Brief Psychiatric Rating Scale [30] are equivocal (n = 49, 2 RCTs, RR -4.82 CI -8.5 to 1.2). Most information on behaviour relates to a dichotomous outcome of 'behaviour deteriorated/disturbed/uncooperative' (n = 1127, 10 RCTs, RR 0.53 CI 0.3 to 0.9) but these data are heterogeneous (χ^2 73, df 9, $p < 0.00001$).

Chlorpromazine has many adverse effects (Table 3). It is a sedative (n = 1242, 18 RCTs, RR 2.3 CI 1.7 to 3.1, NNH 6 CI 5 to 8) that may cause weight gain (n = 165, 5 RCTs, RR 4.44 CI 2.1 to 9.3, NNH 3 CI 2 to 5). Extrapyramidal symptoms are common and include acute dystonias (n = 780, 4 RCTs, RR 3.1 CI 1.3 to 7.7, NNH 24 CI 15–57) and Parkinsonism (n = 1265, 12 RCTs, RR 2.6 CI 1.2 to 5.4, NNH 10 CI 8 to 16). Data on chronic movement disorders such as tardive dyskinesia, however, are not available from this review as this requires longer follow-up than was attempted for nearly all the trials. Occurrence of akathisia is similar in the chlorpromazine and placebo groups. For every 7 people given chlorpromazine, one will experience some form of photosensitive reaction (n = 799, 6 RCTs, RR 5.19 CI 3 to 10, NNH 7 CI 6 to 10); hypotension and dizziness are common (n = 1232, 15 RCTs, RR

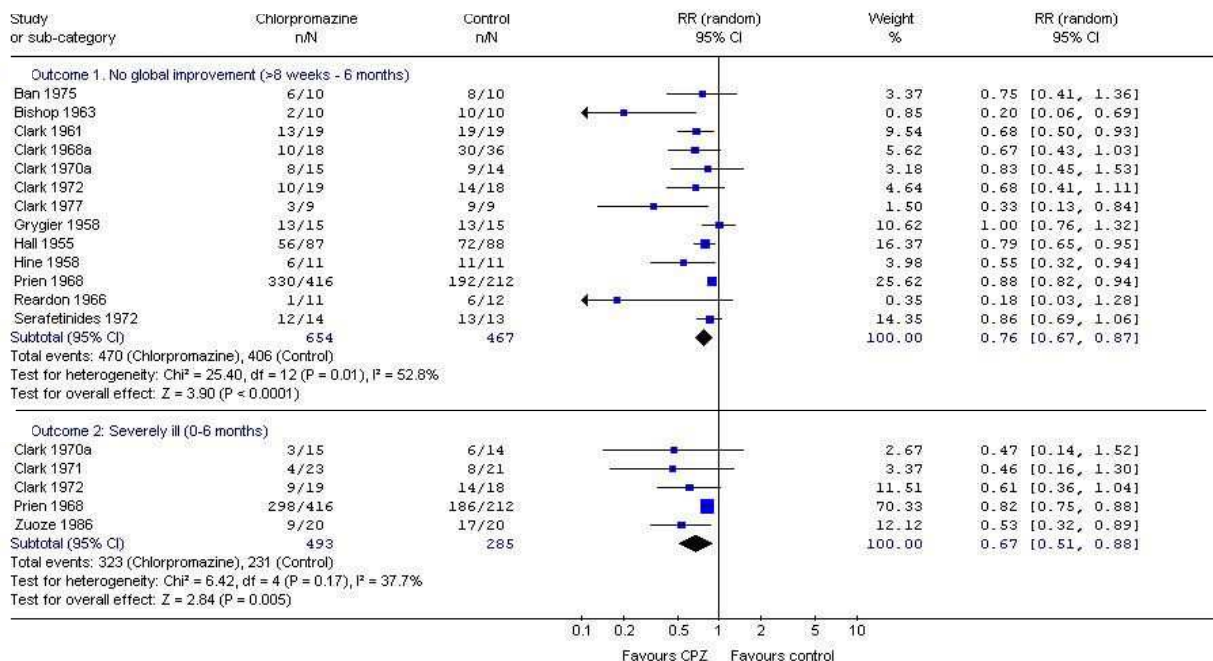


Figure 1
Chlorpromazine versus placebo – global outcomes.

1.9 CI 1.4 to 27, NNH 12 CI 8 to 22); and dry mouth is considerably increased (n = 756, 5 RCTs, RR 4.00 CI 1.6 to 10, NNH 18 CI 13 to 37). Eye opacities, as identified by slit-lamp examination within one large trial using high dose chlorpromazine 2 gms/day [26], were increased within the drug group (n = 657, RR 3.09 CI 1.9 to 5.1, NNH 7 CI 5 to 10). There were no significant differences between people given placebo and those allocated chlorpromazine in the frequency of complaints of constipation, urinary retention and blurred vision.

There were no reports of deaths occurring during any of the studies. Any data relating to violent incidents, hospital discharge or admissions, presence of delusions or hallucinations were either absent or impossible to use. Not one of the studies, even in recent years, reported levels of satisfaction and quality of life, nor could we identify any direct economic evaluation of chlorpromazine.

Discussion

These 50 studies amounted to a total of >2000 person-years of exposure to chlorpromazine or placebo. For people with this serious mental illness, and certainly in situations where resources are limited, chlorpromazine remains a first line treatment. The medium term data on improvement suggest that about 7 people have to be treated for one to have what the trialists would describe as 'global improvement' (n = 1121, 13 RCTs, RR 0.76 CI 0.7 to 0.9, NNT 7 CI 5 to 10). This outcome relates to a simple dichotomised impression of a person's mental state, behaviour and functioning. Given the limited quality of reporting and the fact that we may be only able to pool data from a subset of the included trials, even this finding may be an over estimate of the positive and an underestimate of the negative effects of giving chlorpromazine.

The increased likelihood that people given chlorpromazine continued in their trial may be heartening. It

Table 3: Adverse effects.

	No. of trials	Chlorpromazine	Placebo	RR (95% CI) Random
		events/total participants		
General symptoms				
Sedation	18	224/725	68/517	2.30 (1.7–3.1)
Weight gain > 10 lb; 4.5 Kg	5	31/75	7/90	4.44 (2.1–9.3)
Extrapyramidal symptoms				
Acute dystonia	4	28/472	5/306	3.10 (1.3–7.7)
Parkinsonism	12	123/723	40/542	2.60 (1.2–5.4)
Fits	3	19/450	4/245	2.41 (0.4–16.4)
Akathisia	8	53/602	40/400	0.95 (0.5–1.9)
Allergic-type symptoms				
Agranulocytosis/leucopenia	7	10/207	2/187	2.02 (0.7–5.6)
Rashes/itching	11	42/658	21/475	1.43 (0.9–2.4)
Jaundice	3	8/116	1/115	4.04 (0.9–17.9)
Photosensitivity	6	81/496	9/303	5.19 (2.7–9.8)
Eye opacity	2	97/431	16/226	3.09 (1.9–5.1)
Anti-cholinergic/nor-adrenergic symptoms				
Hypotension + dizziness	15	113/708	38/524	1.90 (1.4–2.7)
Constipation	9	40/590	16/365	1.68 (0.9–2.9)
Urinary retention	3	11/459	5/253	1.49 (0.5–4.3)
Dry mouth	5	32/473	4/283	4.00 (1.6–9.8)
Blurred vision	6	10/529	9/381	1.10 (0.5–2.9)

could indicate a genuine decrease in the distressing symptoms of schizophrenia that led to an increased compliance with medication, despite common and unpleasant adverse effects such as sedation and hypotension. Doctors and nurses may, at times of acute disturbance, welcome this sedative effect but people with schizophrenia may not.

Despite limitations, this review provides quantitative evidence to confirm many of the impressions held by clinicians and recipients of care about the effects of chlorpromazine. Chlorpromazine is a sedating drug, prone to cause movement problems. Reliable evidence about its short-term effects is surprisingly weak, but information from studies that are >6 months does suggest that chlorpromazine facilitates a global improvement and may decrease the likelihood of behaving in a disturbed manner, at least within the confines of hospital.

Conclusion

Chlorpromazine represents a low-cost choice for clinicians world-wide and merits its position as a benchmark treatment for psychotic symptoms. Until large, high quality, clinically relevant trials show equally inexpensive treatments to be both more effective and safe, chlorpromazine is likely to continue to be one of the most widely used treatments for the millions of people who suffer with schizophrenia.

Although the NNTs may seem high, and the NNHs low, these estimates are likely to be more realistic than those for new drugs, for which all evidence has not been made available. As time passes, studies not seen in the early years of marketing tend to become apparent. These studies may be systematically different from those initially used to sell the drug. As a result, clinical practice of low and middle-income countries, often having to use older generations of drug, may, nevertheless, have more chance of being based on all evidence than that of high income nations. The latter are prone to purchase new expensive innovations the evidence for which is treated with sensitivity by researchers, marketers, and licensing agencies mindful of pecuniary influences.

Competing interests

The author(s) declare that they have no competing interests.

Authors' contributions

BT participated in the protocol development, trial searching, data extraction, analysis, data interpretation and writing the manuscript.

JR participated in the trial searching, data extraction, analysis, data interpretation, writing the manuscript and maintaining the review.

CEA participated in the protocol development, trial searching, data extraction, analysis, data interpretation, writing the final manuscript and maintaining the review.

GA participated in the protocol development and data interpretation.

MC participated in the calculation and understanding of the results and production of the final manuscript.

JB participated in the calculation and understanding of results, and production of the final manuscript.

KW participated in the protocol development, calculation and understanding of the results and writing the final manuscript.

Additional material

Additional File 1

Search strategy for identification of studies. The Schizophrenia Group's register is based on regular searches of BIOSIS Inside; CENTRAL; CINAHL; EMBASE; MEDLINE and PsycINFO; the hand searching of relevant journals and conference proceedings, and searches of several key grey literature sources. A full description is given in the Group's module on the Cochrane Library.

Click here for file

[<http://www.biomedcentral.com/content/supplementary/1741-7015-3-15-S1.doc>]

Acknowledgements

Thanks to Dr Pargiter (Hobart, Tasmania), Doreen Ledgard, Marie Montague and Sarah Old (Warneford Hospital library) and Ms Karen Butter (Medical Information Pharmacist, Rhone-Poulenc Rorer, UK) for helping track down useful data for this study. Gill Rizzello for her comments on the final manuscript.

References

- WHO: **Essential Medicines 13th edition. WHO Model List 2003.** [<http://www.who.int/hac/techguidance/pht/essentialmed/en>].
- WHO: **Global Health Statistics Online, 1998.** [http://w3.who.sea.org/en/section1174/section1199/section1567_6744.htm].
- Wysowski DK, Baum C: **Antipsychotic drug use in the United States, 1976–1985.** *Arch Gen Psychiatry* 1989, **46**:929-932.
- Burgess S: **Emergency drug treatment of disturbed psychotic patients.** *Auditorium* 1997, **6**:28-30.
- Norquist G, Hyman SE: **Advances in understanding and treating mental illness: implications for policy.** *Health Aff* 1999, **18**:32-47.
- Odejide AO, Ban TA: **Psychotropic drug prescription pattern in a developing country (Nigeria). The need for an essential psychotherapeutic drug list.** *Int Pharmacopsychiatry* 1982, **17**:163-169.
- Chong MY, Tan CH, Fujii S, Yang, Ungvari GS, Si T, Chung EK, Sim K, Tsang HY, Shinfuku N: **Antipsychotic drug prescription for schizophrenia in East Asia: rationale for change.** *Psychiatry Clin Neurosci* 2004, **58**:61-67.
- Prescription Pricing Authority: NHS 2003** [<http://www.ppa.org.uk/index.htm>]
- Adams CE, Bartsch S, Fenton M: **Publishing patterns of the four drugs most commonly reported in schizophrenia trials.** *Schizophr Res* 2004, **67**:268.
- Cook RJ, Sackett DL: **The number needed to treat: a clinically useful measure of treatment effect.** *BMJ* 1995, **310**:452-454.
- Cole JO, Davis JM: **Antipsychotic drugs.** In *The Schizophrenic Syndrome* New York: Grune & Stratton; 1969:478-568.
- Thornley B, Rathbone J, Adams CE, Awad G: **Chlorpromazine versus placebo for schizophrenia.** *Cochrane Database Systematic Review* 2004:CD000284.
- Clarke M, Oxman AD: **The Cochrane Reviewers Handbook 4.2.0.** *The Cochrane Library* 2003:2.
- DerSimonian R, Laird N: **Meta-analysis in clinical trials.** *Control Clin Trials* 1986, **7**:177-188.
- Altman DG, Bland JM: **Detecting skewness from summary information.** *BMJ* 1996, **313**:1200.
- Hine FR: **Chlorpromazine in schizophrenic withdrawal and in the withdrawn schizophrenic.** *J Nerv Ment Dis* 1958, **127**:220-227.
- Letemendia F, Harris AD: **Chlorpromazine and the untreated chronic schizophrenic: a long-term trial.** *Br J Psychiatry* 1967, **113**:950-958.
- Hamill WT, Fontana AF: **The immediate effects of chlorpromazine in newly admitted schizophrenic patients.** *Am J Psychiatry* 1975, **132**:1023-1026.
- Tetreault L, Bordeleau JM, Gauthier R, Vulpe M, Lapointe L: **Comparative study of TPS-23, chlorpromazine and placebo in chronic schizophrenic patients.** *Dis Nerv Syst* 1969, **30**:74-84.
- Hall RA, Dunlap DJ: **A study of chlorpromazine: methodology and results with chronic semi-disturbed schizophrenics.** *J Nerv Ment Dis* 1955, **122**:301-314.
- Cole JO, Goldberg SC, Klerman GL, National Institute of Mental Health Psychopharmacology Service Center Collaborative Study Group: **Phenothiazine treatment in acute schizophrenia.** *Arch Gen Psychiatry* 1964, **10**:246-261.
- Schulz KF, Chalmers I, Hayes RJ, Altman DG: **Empirical evidence of bias. Dimensions of methodological quality associated with estimates of treatment effects in controlled trials.** *JAMA* 1995, **273**:408-412.
- Grygier P, Waters MA: **Chlorpromazine used with an intensive occupational therapy program.** *Arch Neuro Psychiatr* 1958, **79**:697-705.
- Clark M, Dubowski K, Colmore J: **The effect of chlorpromazine on serum cholesterol in chronic schizophrenic patients.** *Clin Pharmacol Ther* 1970, **11**:883-889.
- Payne P: **A comparison of trifluopromazine, chlorpromazine and a placebo in twenty-one chronic schizophrenic patients.** *Manit Med Rev* 1960:196-198.
- Prien R, Cole JO: **High dose chlorpromazine therapy in chronic schizophrenia.** *Arch Gen Psychiatry* 1968, **18**:482-495.
- Reschke RW: **Parenteral haloperidol for rapid control of severe, disruptive symptoms of acute schizophrenia.** *Dis Nerv Syst* 1974, **35**:112-115.
- Clark ML, Huber VK, Kyriakopoulos AA, Ray TS, Colmore JP, Ramsey HR: **Evaluation of trifluoperidol in chronic schizophrenia.** *Psychopharmacologia* 1968, **12**:193-203.
- Egger M, Davey Smith G, Schneider M, Minder C: **Bias in meta-analysis detected by a simple, graphical test.** *BMJ* 1997, **315**:629-634.
- Overall JE, Gorham DR: **The Brief Psychiatric Rating Scale.** *Psychol Rep* 1962, **10**:799-812.

Pre-publication history

The pre-publication history for this paper can be accessed here:

<http://www.biomedcentral.com/1741-7015/3/15/prepub>