



UNIVERSITY OF LEEDS

This is a repository copy of *Control task substitution in semi-automated driving: does it matter what aspects are automated?*.

White Rose Research Online URL for this paper:
<http://eprints.whiterose.ac.uk/84453/>

Version: Accepted Version

Article:

Carsten, OMJ, Lai, FCH, Barnard, AH et al. (2 more authors) (2012) Control task substitution in semi-automated driving: does it matter what aspects are automated? *Human Factors*, 54 (5). 747 - 761. ISSN 0018-7208

<https://doi.org/10.1177/0018720812460246>

Reuse

Unless indicated otherwise, fulltext items are protected by copyright with all rights reserved. The copyright exception in section 29 of the Copyright, Designs and Patents Act 1988 allows the making of a single copy solely for the purpose of non-commercial research or private study within the limits of fair dealing. The publisher or other rights-holder may allow further reproduction and re-use of this version - refer to the White Rose Research Online record for this item. Where records identify the publisher as the copyright holder, users can verify any specific terms of use on the publisher's website.

Takedown

If you consider content in White Rose Research Online to be in breach of UK law, please notify us by emailing eprints@whiterose.ac.uk including the URL of the record and the reason for the withdrawal request.



eprints@whiterose.ac.uk
<https://eprints.whiterose.ac.uk/>

CONTROL TASK SUBSTITUTION IN SEMI-AUTOMATED DRIVING: DOES IT MATTER WHAT ASPECTS
ARE AUTOMATED?

OLIVER M.J. CARSTEN, FRANK C.H. LAI , YVONNE BARNARD, A. HAMISH JAMSON AND NATASHA
MERAT

Institute for Transport Studies, University of Leeds, UK

ABSTRACT

Objective: The study was designed to show how driver attention to the road scene and engagement of a choice of secondary tasks are affected by the level of automation provided to assist or take over the basic task of vehicle control. It was also designed to investigate the difference between support in longitudinal control and support in lateral control.

Background: There is comparatively little literature on the implications of automation for drivers' engagement in the driving task and for their willingness to engage in non-driving related activities.

Method: A study was carried out on a high-level driving simulator in which drivers experienced three levels of automation — manual driving, semi-automated driving with either longitudinal or lateral control provided, and highly automated with both longitudinal and lateral control provided. Drivers were free to pay attention to the roadway and traffic or to engage in range of entertainment and grooming tasks.

Results: Engagement in the non-driving tasks increased from manual to semi-automated driving and increased further with highly automated driving. There were substantial differences in attention to the road and traffic between the two types of semi-automated driving.

Conclusion: The literature on automation and the various task analyses of driving do not, as they currently exist, help to explain the effects that were found. Lateral support and longitudinal support may be the same in terms of levels of automation but appear to be regarded rather differently by drivers.

Contact information: Oliver Carsten, Institute for Transport Studies, University of Leeds,
Leeds LS2 9JT, UK

Running head: Automation of vehicle control

Keywords: Automation, driver behavior, dual task performance, vigilance, eye movement, task analysis

Précis: This study examines driver willingness to engage in secondary tasks as automation increases. In line with expectations, drivers were more willing to entertain themselves, for example by watching a DVD, with greater automation of vehicle control. But the effects differed depending on whether they were supplanted in longitudinal or in lateral control.

INTRODUCTION

The tendency in the literature on the implications of automation for human performance is to start with some kind of classification of levels of automation that is not domain-specific. The number of levels of automation may vary. Thus Parasuraman, Sheridan and Wickens (2000) identify ten levels of automation from the lowest level without any assistance to the highest level in which the human is completely supplanted by the system, while Parasuraman (2000) distinguishes five levels.

Automation can supplant the human operator in a variety of ways. Parasuraman, Sheridan and Wickens (2000) assert that automation can be applied (at any level) to the various broad stages of information processing. Thus automation can assist or supplant the human in information acquisition, information analysis, decision and action selection, and lastly action implementation. As examples of the four stages in the driving context, we might think about:

1. Displaying road signs on the dashboard

2. Warning of slippery road conditions
3. Advice on lane selection from a navigation system
4. Brake assist

However, it is worth noting that major elements in driving can be typified as a set of simultaneous tasks and subtasks, in which all the stages of information processing are being performed in parallel. One could even argue that driving is one overall task with a set of sub-tasks and sub-sub-tasks, with a number of tasks often being performed concurrently. Thus changing lane would be a sub-task and indicator use would be a sub-sub-task. Such a view of driving is suggested by Michon's famous three-level model of the driving task as subdivided into the strategic level, the maneuvering level and the control level (Michon, 1985). Engström and Hollnagel (2007) emphasize the need to focus on the interrelationship of different aspects of driving: "The driving task generally involves the pursuit of several simultaneous sub-goals with different time frames." The Driver-in-Control (Hollnagel, Nåbo and Lau, 2003) explicitly links goals at four levels (tracking, regulating, monitoring and targeting) and suggests therefore that automation of one level might influence operator performance at another level. Thus automation of the lower levels of tracking or regulation might influence driver performance in monitoring, i.e. situation assessment and hence situation awareness (Endsley, 1995).

This leads to the issue that, in terms of overall operator involvement, one dimension not covered by the typology of Parasuraman, Sheridan and Wickens (2000) is the impact of automation of virtually all aspects of a task such as driving, rather than just one part of it. Driver engagement will be quite different if faced with almost total and prolonged automation of major aspects of driving, as opposed to automation of one or more elements of the task as for example might occur with automation of wiper activation or climate control, or even assistance in the performance of a particular maneuver such as a lane change. And, as the level of automation increases, there is a

greater risk of out of the loop performance and loss of situation awareness, especially when an automated system carries out all the steps of information processing through to action selection and implementation (Kaber and Endsley, 2003). When tracking and regulating in driving are automated, the driver will be faced with little need for input and attention, particularly when route choice is not an issue.

Hoc, Young and Blosseville (2009) discussed interaction between driver and automation in terms of cooperation at different levels of the driving task — the meta-level, involving mental models, the planning level involving risk perception and the action level involving vehicle control. Involvement in one level of the driving task by an automated system will have very different impacts on the operator than substitution of another level. Even assistance in maneuvering from e.g. a lane change assistance system, gives only short-term support. On the other hand, substitution in control, as from an Adaptive Cruise Control or a Lane Keeping System, might well leave the driver with a sense that the fundamental responsibility for driving has shifted to the automated system or systems. Having lost involvement and the need to engage, the driver might feel tempted to shift attention away from vehicle operation to other activities — looking around at the scenery and engaging in distracting tasks such as infotainment. Thus the willingness to engage in distracting activities may be an indicator of driver confidence in the capability of the vehicle to maintain safe operation. Indeed drivers may feel fully justified in their engagement in distracting activities — why have an automated system if there is no advantage apart from reduced effort in driving to be gained thereby? This could pose a problem for system designers, who in the future might not be able to maintain the line that the driver has responsibility and might have to demonstrate that responsibility can be shared between system and driver in a safe manner.

An additional issue is whether automation of different aspects of vehicle control leads to different impacts on driver engagement. In theory the driving task literature might provide guidance here. At

the vehicle control level, the driving task literature identifies two major elements, longitudinal control and lateral control. Perhaps the most often-cited such analysis is the comprehensive set of descriptions compiled by McKnight and Adams (1970a and 1970b), targeted at the domain of driver education. In that analysis, steering and speed control are identified as “basic control tasks”, while car following is classified as one of the “tasks related to traffic conditions” (McKnight and Adams, 1970a). In steering, one sub-task is defined as directional control and one sub-sub-task is to maintain correct position in the lane. Criticality¹ is rated as +11 if encountering opposing traffic, though only +5 for lane-keeping. In speed control, one sub-task is to vary pressure on the accelerator to maintain constant speed, and a sub-sub-task is to maintain the speed of the traffic flow (criticality +7). In following, three main sub-tasks are defined: maintain adequate following distance from the lead vehicle (criticality up to +16), adjust speed to the speed of the lead vehicle (criticality up to +14), and observe traffic to anticipate changes in lead vehicle velocity (criticality up to +9). Thus steering is treated as less safety-critical than car following, although more safety critical than general speed maintenance, presumably on the basis of risk in case of failure. Differences between the tasks of lateral and longitudinal control are not specifically discussed.

A more recent task analysis of driving was carried out by Battelle for the U.S. Federal Highway Administration to assist in the assessment of information systems used in the context of commercial vehicle operations (Wheeler et al., 1996). The report identifies two functionally equivalent sub-tasks of vehicle control: speed control with a goal to match vehicle speed with driving requirements and position control with a goal to match vehicle direction with driving requirements.

A contemporaneous report by Battelle for the U.S. National Highway Traffic Safety Administration, again in the context of commercial vehicle operations (Tijerina et al., 1996), reviewed previous literature on driving task analysis with a particular focus on workload. Detailed aspects of the tasks

¹ Criticality values were assigned by a group of experts and were standardised so as to range from -20 to +20 with a mean of 0 and a standard deviation of 10.

of vehicle control and specifically how longitudinal and lateral control are performed were not covered. Similarly the more recent discussion of driving task analysis by Fastenmeier and Gstalter (2007), treats the two aspects of vehicle control as functionally equivalent: “On the control level the two main tasks are steering and speed control, including horizontal and vertical shaping.” Interestingly the framework that they propose is almost entirely focused on situations that arise in longitudinal control, and lateral control is not really addressed.

While the driving task literature may treat the two aspects of vehicle control as being equivalent, other studies point to some differences. Young and Stanton (1997) found much lower workload when drivers had only to provide longitudinal control (i.e. with lane keeping support) than when they had to provide only lateral control (with an ACC). These results were substantially replicated in Young and Stanton (2002). This suggests that the attentional requirements for the two aspects of vehicle control may not be equivalent and that lateral control is more demanding than longitudinal control.

As discussed above, increasing automation of the control level of the driving task, particularly continuous as opposed to intermittent automation, may result in driver disengagement from driving and willingness to engage in other activities including infotainment. Such shifting of attention into other activities will depend in part on how much reliance drivers feel they can place on the system to maintain safe progress. Lee and See (2004) have reviewed how reliance is in part based on trust and how trust is in turn influenced by the characteristics of automation. They define trust as “the attitude that an agent will help achieve an individual’s goals in a situation characterized by uncertainty and vulnerability” (p. 54). Thus one important factor in determining reliance will be the extent to which automation can achieve an individual’s goals. If one goal in driving is to obtain the maximum enjoyment or reward from the time spent in driving, then drivers may be willing to place more reliance on a system that frees them from monotonous aspects of driving and allows attention

to other activities. This reliance will be influenced by the trust that they have in the system's *capability* to keep them out of danger. As used here, the term "capability" can be likened to that of "technical competence" as used by Muir (1994): "The expectation of technical competence is probably closest to our intuitive understanding of what it means to trust a machine; machines are designed to perform a task, and we expect them to work properly — to be competent." (p. 1911)

The more capable is the automation of vehicle control, the more reliance drivers will be willing to place in that automation and the more willing they will therefore be to engage in non-driving-related tasks.

Based on the above review, a number of research questions can be identified:

1. Does driver attention and effort invested shift away from driving as automation increases from taking over some major part of vehicle control to taking over virtually all aspects of vehicle control?
2. As automation is increased, are drivers more willing to engage in secondary tasks such as infotainment and is there a commensurate decrease in the effort invested in driving?
3. Is there a difference in driver confidence in the capability of the automation between lateral and longitudinal support?
4. Does the experience of assistance in a semi-automated condition (where part of vehicle control is automated) influence subsequent driver behavior in a highly automated condition (where virtually all of vehicle control is automated)?

An experiment conducted recently in a UK national project, EASY (Effects of Automation on Safety) allows an examination of how the driver task being partially substituted by a semi-automated driving system affects operator response and of how that learned response affects subsequent behavior in highly automated driving. In information processing terms, the support was at the level of action implementation. In terms of levels of automation, the level was high in the range defined

by Parasuraman, Sheridan and Wickens (2000). However, only part of the driving task was substituted in the semi-automated condition as opposed to virtually all major aspects of the driving task in the highly automated condition. In one version of the semi-automated condition, longitudinal control was substituted; in the other version, lateral control was substituted. Given the fact that in driving the tasks of lateral and longitudinal control are generally treated as functionally equivalent, one might expect that the impact of these two versions on operator response should have been similar. The experiment was designed to reveal whether that was the case.

The four conditions are quite similar to those in Young and Stanton (1997). The experiment discussed in that paper investigated the impact on driver workload of driving under four conditions: manual driving; driving with an ACC; driving with an active steering (AS) system, i.e. with the vehicle performing lateral control; and driving with the combination of ACC and AS. The focus of the study was on impact on workload as measured by secondary task performance while driving and subjective rating in the form of NASA-TLX provided at the end of each drive. The major conclusion was that workload with ACC was not different from that in manual driving, while both AS and ACC+AS resulted in lower workload with the largest effect being in the combined ACC+AS condition. Another study by the same authors used the same conditions and the same simulator to focus on attentional capacity in underload situations, i.e. with no opportunities for drivers to focus on alternative tasks (Young and Stanton, 2002).

The study by Young and Stanton (1997) may appear to be quite similar to the one reported here. But there are a number of important differences. First of all, the earlier study focused on workload, whereas the current one focuses on attentional shift. Next, the earlier study used a counterbalanced design, while the current one used increasing automation as a way to investigate learning effects. The earlier study had a two-lane rural road as the driving environment, in contrast to the motorway environment of the current study. Rural road driving is more demanding than motorway driving and

presents participants with the potential threat of veering into the path of opposing traffic. In addition, the previous study was conducted on a fixed base driving simulator with scene display on a computer monitor. The current study was conducted on a moving base simulator (8 degrees of freedom motion base) with an eight-channel visual system providing a 250° forward field of view as well as a 60° rear view and LCD side mirrors. The effort required for lateral control and the probability of lane excursion are both known to be higher in simulators without a motion base as compared to static driving simulators. Thus Greenberg, Artz, and Cathey (2003) found that with certain secondary tasks there was a substantial increase in lane violations when the motion system of a simulator was disabled as compared to the with-motion condition. Lack of motion also increased heading error—that is, the angular difference of the driven vehicle from the instantaneous road. The conclusion was that drivers need to pay more attention to heading angle when motion cues are absent or reduced. This is perhaps not surprising because without motion, only visual feedback on vehicle path is available. There is thus the potential for the lack of a motion base in a simulator to distort results, particularly where steering effort is an important factor.

THE EXPERIMENT

Apparatus

The EASY experiment was designed to investigate driver response to driving on a motorway under different levels of automation in semi-naturalistic conditions. The experiment, conducted on the Leeds Driving Simulator, was set up so as to allow the drivers to choose whether and when they wished to engage in non-driving-related secondary tasks. A variety of tasks was offered: drivers could play a game such as air guitar, read a magazine, perform a grooming task such as putting on

makeup, eat a snack, watch a DVD, do a puzzle such as a crossword or Sudoku, listen to the radio and so on.

The University of Leeds Driving Simulator is a high-fidelity motion-based research apparatus. A Jaguar S-type vehicle cab sits in a 4-meter spherical projection dome, supported by two railed gantries crossed diagonally with the bottom gantry sliding along a pair of 7-meter tracks. This allows 5 meters of effective travel in each direction, providing motion forces longitudinally and laterally. The platform of the projection dome is capable of 8 degrees of freedom motion. The whole motion system provides realistic representation of the motion cues for a vast range of driving scenarios. Inside the dome, the driving environment is presented by a 6-channel imaging system and an 8-channel sound system. The interior of the vehicle cab provides the original control interfaces and information display of the Jaguar S-type.

Roadway

The experimental road was a three-lane motorway comprising straight sections and two types of curves (either a 750 or a 1000 meter radius each with a curve length of 252 meters). These sections were joined to create a road which was approximately 55 miles (88.5 km) long. It took approximately 45 minutes to complete each drive based on the standard speed limit of 70 mph (112.6 km/h) applicable on UK motorways. The curve sections only required very gentle steering. Approximately 65% of the road consisted of such gentle curves. Other traffic was presented to create a natural feeling of driving on a motorway on a typical and ordinary day. The surrounding traffic drone vehicles which appeared in Lane 1 (the slow left-hand lane) would travel at a speed below 70 mph; in Lane 2 (the middle lane) they would travel at approximately 70 mph; and in Lane 3 (the fast lane) they would travel faster than 70 mph. The other vehicles were not designed to interact with the

participant's vehicle in any particular way. The whole driving environment was relaxed and calm, although traffic density increased somewhat over each drive.

Experimental design

Each participant drove the same experimental road three times. To enable the investigation of learning effects and of the impact of the two paths to high automation, the conditions were not counterbalanced. Initially the participants drove without support from any driver assistance system, i.e. with manual control of the vehicle's longitudinal and lateral movements, which was the baseline condition. The second time they had the support by either ACC or a lane-keeping system (LKS) in which the vehicle steered itself. This second drive constituted semi-automated driving, which was a between-subject condition. The third drive they had the support of both technologies (i.e. highly-automated driving). This experimental design was selected over a more traditional alternative of a fully counterbalanced design because a central focus of the study was on learning and carry-over effects as automation increased. In addition, it was felt that a counterbalanced design would suffer from a potential contamination in that, for some participants, manual driving would be influenced by the experience in semi- or highly automated driving.

Participants were instructed to move to or stay in the middle lane as soon as they saw the first junction, which is approximately 1 mile (1.6 km) after first joining the motorway. This was applicable to all three scenarios. For the baseline scenario, participants were instructed to stay in the middle lane for the rest of the drive and observe the speed limit. For the semi and highly automated scenarios, participants were instructed to activate the support system as soon as they had driven past the junction. If the participant forgot to do so, the researcher would remind him/her via the intercom promptly. For the semi-automated scenario, the lateral group (who had LKS enabled) was instructed to observe the speed limit, while the longitudinal group (who had ACC enabled) had the

vehicle speed set at 70 mph (112.6 km/h). A lead car was absent most of the time — it would only occur when the participant was responsible for the vehicle's longitudinal movement (i.e. in the baseline drive and for the lateral group in semi-automated driving) and if the participant chose to exceed the speed limit. Participants were advised that the support system was 100% reliable when provided (i.e. during the semi and highly automated driving scenarios). This was intended to indicate to the participants that they should not expect to encounter system failures. However, participants were instructed to exercise due care and attention at all times as they would in the real world. All participants drove the same road three times.

Participants

There were 25 drivers in the longitudinal group and 24 drivers in the lateral group. Most were male (22 males in both groups). The two groups were similar in terms of mean age. Mean age was 47.2 years (SD 11.1) in the longitudinal group and 48.4 years (SD 10.1) in the lateral group. Driving experience (mean years since passing the test of 28.0, SD 11.3 and 27.9, SD 11.6 respectively). They differed somewhat in terms of reported annual mileage with a mean of 30.2 thousand miles (48.6 thousand km) for the longitudinal group and 25.0 thousand miles (40.2 thousand km) for the lateral group. But all were high-mileage drivers with a minimum of 8,000 miles (12,874 km) a year.

Data

Data was collected on task uptake, defined as the number of drivers who chose to engage in a particular non-driving task, and on task engagement, defined as the percentage of a drive in which drivers were involved in a particular task.

Eye movement, recorded by Seeing Machine's FaceLAB 4, was used to identify participants' visual attention. FaceLAB 4 records eye movements at 60Hz. The driver's field of view was divided into five spatial regions as illustrated in Figure 1 similar to Hughes and Cole (1988). The central region was defined as a 6° radius circle around the mode of fixations within a 60-second moving window. The left region covered glances to the center console (e.g. the DVD screen and radio controls) as well as the left side mirror, door window, and passing traffic in the adjacent lane. The right region covered glances to the right side mirror, door window, passing traffic in the adjacent lane and also in the opposite carriageway. The bottom region covered mainly the dashboard where the speedometer, rev counter, and a variety of gauges were located. The top region covered mainly the sky. In addition to eye movement, participants' heart rate was also recorded by the BIOPAC, as an indication of overall workload during the drive (de Waard, 1996). It was expected that changes in heart rate would reflect the effort invested in driving, with negligible effects from engagement in the entertainment tasks, since these were not very resource-demanding (they would have mostly have been classified as "easy" in the scale of Lai and Carsten, 2003). Not all the data was complete for all the participants.

Figure 1 about here

The FaceLAB 4 equipment was also used to collect data on PERCLOS, as in indicator of driver fatigue. This was in part out of concern that, because of the experimental design, there might be a confounding effect of fatigue, i.e. greater fatigue with each successive drive. Since the PERCLOS data did not show any consistent pattern of increasing fatigue with successive drives, these concerns were allayed.

RESULTS

Figure 2 compares the mean percentage, across all 49 participants, of glances falling into the five visual attention regions across the experimental conditions. The vast majority of glances were into the central region. Participants also spent a considerable amount of time glancing to the left or the right region, where other traffic was likely to be present. The amount of time spent on the central region decreased noticeably as the level of automation increased, which is supported by the statistical test results shown in Table 1. The difference between the two automation paths was not statistically significant at the 0.05 level (i.e. Table 2). However, the effect sizes suggest that the between-group difference was enlarged when the experiment progressed from the manual mode to the semi-automated mode. This difference seemed to have carried over to the highly-automated mode (i.e. the effect size of 0.45 from the highly-automated mode was still double the effect size of 0.23 from the manual driving mode).

Figure 2 about here

Tables 1 and 2 about here

Figure 2 also suggests that there was a tendency for participants to shift their glances to the left region when the level of automation increased. Interestingly, the lateral group appeared to have started this shift during semi-automated driving, which is one stage earlier than the longitudinal group. There were small changes in glances to other areas, including the top (sky), indicating a greater tendency for a general loss of focus on the roadway.

As indicated earlier, drivers were offered a number of non-driving-related tasks which they could choose to take into the vehicle and then choose to engage in when they felt comfortable to do so. Uptake (i.e. choice to do within a drive) of a number of tasks was observable. For example, quite a

few drivers chose to eat while driving. For those who had longitudinal support in semi-automated driving, the number of instances of eating was 9 in manual driving, 17 in semi-automated driving and 14 in highly automated driving. For those who had lateral support in semi-automated driving, the number of instances of eating was 3 of 24 in manual driving, 22 in semi-automated driving and 33 in highly automated driving.

However, some of these tasks were short-lived. Overall, there were only two tasks in which drivers engaged for a substantial proportion of their driving. Those were listening to the radio and watching a DVD. This can be seen from Figure 3 which shows the mean proportion of journey in which drivers were engaged in a task, with standard errors shown. There are indications that listening to the radio did increase with automation, but this activity is not normally considered very demanding or distracting. Therefore engagement in the DVD task is considered to be more important.

Figure 3 about here

Table 3 presents the mean proportion of journey time when a DVD was running. This is also illustrated in Figure 4 which shows the same data as Figure 3 but just for the DVD task. It can be observed that the lateral group shifted their attention away from the central region one stage ahead of the longitudinal group. Although the differences in DVD engagement between the two groups were not statistically significant at the 0.05 level, the effect sizes suggest that there was a carry-over effect; i.e. the effect size of the between-group difference, shown in Table 4, increased from 0.15 to 0.48 and then to 0.51 as the level of automation increased.

The data on DVD engagement can be linked to the data on visual attention by region shown in Figure 2. Since the DVD screen was located in the left region, the change in the pattern of glances falling in the left region can largely be attributed to watching the DVD.

Tables 3 and 4 about here

Figure 4 about here

It is also of interest to investigate the attention allocation in the absence of the DVD task. Figure 5 presents the distribution of glances among the five visual attention regions from the 24 participants who never turned on the DVD throughout the three driving modes. The proportion of attention spent on the central region again decreased in line with an increase in the level of automation. This observation is also supported by statistical test results depicted in Table 5. However, for the lateral group there was little difference between the semi-automated condition and the highly automated condition. The effect size of the between-group comparisons (see Table 6) again suggests that the two different automation paths encouraged the participants to adopt different attention allocation strategies. Thus the effect size enlarged from 0.63 to 0.87 as the driving mode moved from manual to semi-automation. The effect size of the between-group difference decreased when moving to the highly-automated driving. However, this is likely due to the aforementioned floor effect.

Figure 5 about here

Tables 5 and 6 about here

Table 7 reports the mean heart rate as well as associated statistical test results, while Table 8 shows the counterpart t-tests for the comparisons within each level of automation. The same data are illustrated in Figure 6 (with standard errors shown). It is rather evident that participants were investing less effort when the driving task was supported. Since none of the distracting tasks was in any way demanding, there is no reason to believe that engagement on those tasks substantially

affected the results. The findings on heart rate are in line with the other data, with decreasing overall workload as automation increased, and a more substantial drop for the lateral group as compared with the longitudinal group from manual to semi-automated driving.

Table 7 about here

Table 8 about here

Figure 6 about here

DISCUSSION

Drivers did not exhibit the same response to longitudinal and lateral support. There are some clear indications that lateral support was closer to highly automated driving. Why should this be so? Why would drivers be less attentive to the road and traffic when driving with lateral support and more attentive when driving with longitudinal support? The explanation for this was not in the quality of the two systems, since both were reliable and both were “well-engineered” so as to keep the vehicle under high quality control.

It is possible that there were systematic differences between the groups in a priori willingness to engage in secondary tasks while driving with system support, but the two groups were generally matched in their characteristics, so that this explanation is not that plausible.

So the explanation must lie in the nature of the driving task (or sub-task) being supplanted by the automated function. It can be argued that in motorway driving, once desired maximum speed has been established and where no close car following is involved, longitudinal control is largely a feedback task. Indeed this is the principle on which ACC is built. Lateral control has a major feed-

forward element, whereby drivers read the road ahead to determine their yaw input, as opposed to merely responding to momentary deviations from desired lane position. A mathematical model of driver lateral control requires a preview of the road ahead (Guo and Guan, 1993; Sharp, Casanova, and Symonds, 2000).

With longitudinal support, drivers must still engage in steering and hence in anticipation of the road path ahead. This requires fairly constant reference to the roadway in order to check the lateral position and path of the vehicle. Drivers are likely to be aware that a small change in heading angle can soon result in a lane or roadway excursion, and that deviation from a desired path is dangerous.

The proposition that drivers wish to maintain a safety margin in lateral control is long-standing. It was discussed by Gibson and Crooks (1938), albeit more in terms of lateral obstacles such as parked cars than in terms of the vehicle's relationship with the roadway. Van Winsum and Godthelp (1996) defined this safety margin as Time to Line Crossing (TLC), i.e. the time available for a driver until the moment at which any part of the vehicle reaches one of the lane boundaries. They observed that TLC was roughly constant both across driver and within drivers across road situation which in the case of their study were curves of differing radii. Typical minimum TLCs for each curve radius studied were in the range of 2.5 to 2.9 seconds. We are not aware of any study that has directly compared drivers for their preference both in forward time to collision and in TLC. However, it is interesting to note that the minimum TLCs observed by van Winsum and Godthelp (1996) were larger than the typical minimum TTCs adopted by drivers, which suggests that drivers in general wish to maintain a larger safety margin for lateral than for longitudinal control.

On the other hand, when they have lateral support, drivers need merely to check for lead vehicle position. If there is no close lead vehicle and hence little likelihood of a collision in the next few

seconds, they may feel free to divert their attention away from the roadway, confident that the lateral support system will maintain the vehicle on a safe course.

There are implications here for the process of task analysis, at least in the driving domain.

Hierarchical task analysis has a long and honorable history in human factors and ergonomics and has occupied a central place in the repertoire of methods since the late 1960s (Stanton, 2006). At the conclusion of his review of the method, Stanton (2006) states: "The approach was flexible enough to enable it to be applied to a wide variety of domains and applications."

In decomposing vehicle control, the literature treats longitudinal and lateral control as being two equivalent sub-tasks. By creating conditions in which the two have been fully decoupled, the experiment has shown that in terms of driver attention they are not equivalent. A very detailed deconstruction of even apparently straightforward driving tasks, such as longitudinal control and lateral control is needed in order to understand driver motivation and behavior in semi-automated conditions. Such a deconstruction should involve defining the task in terms of its operational elements, goals, strategies and attentional requirements. The pre-existing driving task literature, while quite extensive and arguably somewhat complete in terms of task enumeration, does not provide such a rich description of these fundamental aspects of vehicle operation.

CONCLUSIONS

When provided with the support of automation, drivers will shift attention away from the driving task and tend to use the support to enable engagement in non-driving tasks. As might be expected this tendency goes up with increasing automation. However, the findings indicated that this effect is mediated by the type of support offered in vehicle control. Drivers feel more capable of turning their attention away from driving when given lateral support as compared to when they have longitudinal

support. As evidenced here, this experience then carried over into highly automated driving. This shows that the pathway to high automation may be an important influence on attention to the roadway and traffic.

Current typologies of automation are not necessarily able to provide insight into how operators will respond when a task involving action selection in the form of continuous vehicle control is substituted. It is important to understand how the actual task being substituted might affect operator engagement in the overall driving task. Lateral and longitudinal control have fundamentally different properties in terms of the amount of preview required. Automation of headway control, as with ACC, may have less impact on general driver engagement and situation awareness than automation of lateral control as with a Lane Keeping System. The standard literature on levels of automation does not really help to provide the insight required to understand the differing responses of drivers to assistance systems that only partially supplant manual control. Equally the literature on driving task analysis does not decompose vehicle control sufficiently to provide much insight into behavior with automation. A more detailed decomposition is needed to provide a full understanding.

KEY POINTS

- Increasing automation leads to increasing willingness to shift attention from driving to secondary tasks
- There are different effects of the two types of semi-automated driving, in that drivers were more willing to engage in secondary tasks with lateral support than with longitudinal support
- In some respects, driving with lateral support was more like driving with full automation, whereas driving with longitudinal support was more like manual driving

- Equally the literature on levels of automation does not really help to explain these differences whereas decomposition of the tasks involved in vehicle control does suggest explanations
- Previous task analyses of driving have not deconstructed vehicle control sufficiently to reveal some important differences between longitudinal and lateral control

REFERENCES

De Waard, D. (1996). The measurement of drivers' mental workload. PhD thesis, University of Groningen, The Netherlands.

Endsley, M.R. (1995). Toward a theory of situation awareness in dynamic systems. *Human Factors*, 37(1): 65-84.

Engström, J. & Hollnagel, E. (2007). A general conceptual framework for modelling behavioural effects of driver support functions. In C. Cacciabue (Ed.), *Modelling Driver Behaviour in Automotive Environments: Critical Issues in Driver Interactions with Intelligent Transport Systems*. Springer, London, pp. 61-84.

Fastenmeier, W. & Gstalter, H. (2007). Driving task analysis as a tool in traffic safety research and practice. *Safety Science*, 45(9), pp. 952-979.

Gibson, J.J. & Crooks L.E. (1938). A theoretical field-analysis of automobile-driving. *American Journal of Psychology*, 51(3), pp. 453-471.

Greenberg, J., Artz, B. & Cathey, L. (2003). The effect of lateral motion cues during simulated driving. In *Proceedings of the Driving Simulator Conference North America*, Dearborn, 8–10 October.

Guo, K. & Guan, H. (1993). Modelling of driver/vehicle directional control system. *Vehicle System Dynamics*, 22(3-4), pp. 14-184.

Hoc, J.M., Young, M.S. & Blosseville, J.M. (2009). Cooperation between drivers and automation: implications for safety. *Theoretical Issues in Ergonomics Science*, 10(2), pp. 135-160.

Hollnagel, E., Nåbo, A. & Lau, I.V. (2003). A systemic model for driver-in-control. *Proceedings of the 2nd International Driving Symposium on Human Factors in Driver Assessment, Training and Vehicle Design*, Park City, UT. Public Policy Center, University of Iowa.

Hughes, P.K. & Cole, B.L. (1988). The effect of attentional demand on eye movement behaviour when driving. In A.G. Gale, M.H. Freeman, C.M. Haslegrave, P. Smith and S.P. Taylor (Eds.), *Vision in Vehicles II*, pp. 221-230. Amsterdam: North-Holland.

Kaber, D.B. & Endsley, M.R. (2004). The effects of level of automation and adaptive automation on human performance, situation awareness and workload in a dynamic control task. *Theoretical Issues in Ergonomic Science*, 5(2), pp. 113-153.

F. Lai, F. & Carsten, O. (2003). Safety implications of driver dual-task performance. Presented at Tenth International Conference on Vision In Vehicles, Granada, Spain, September.

Lee, J.D. & See, K.A. (2004). Trust in automation: designing for appropriate reliance. *Human Factors*, 46(1), pp. 50-80.

McKnight, A.J. & Adams, B.B. (1970a). Driver education task analysis. Volume I: task descriptions. Report DOT-HS-800-367. Human Resources Research Organization (HumRRO), Alexandria, Virginia.

McKnight, A.J. & Adams, B.B. (1970b). Driver education task analysis. Volume II: task analysis methods. Report DOT-HS-800368. Human Resources Research Organization (HumRRO), Alexandria, Virginia.

Michon, J.A. (1985). A critical review of driver behaviour models. In L. Evans & R.G. Schwing (Eds.), *Human Behavior and Traffic Safety*. Plenum Press, New York, pp. 485-520.

Muir, B.M. (1994). Trust in automation, part I: theoretical issues in the study of trust and human intervention in automated systems. *Ergonomics*, 37:11, pp. 1905-1922.

Parasuraman, R. (2000). Designing automation for human use: empirical studies and quantitative models. *Ergonomics*, 43(7), pp. 931-951.

Parasuraman, R., Sheridan, T.B. & Wickens, C.D. (2000). A model for types and levels of human interaction with automation. *IEEE Transactions on Systems, Man, and Cybernetics — Part A: Systems and Humans*, 30(3), pp. 286-297.

Stanton, N. A. (2006). Hierarchical task analysis: developments, applications, and extensions. *Applied Ergonomics*, 37(1), pp. 55-79.

Sharp, R.S., Casanova, D. & Symonds, P. (2000). A mathematical model for driver steering control, with design, tuning and performance results. *Vehicle System Dynamics*, 33: 5, pp. 289-326.

Tijerina, L., Kiger, S., Wierwille, W., Rockwell, T., Kantowitz, B., Bittner, A., Nygren, T., Myers, L., Tolbert, C. & McCallum, M. (1996). Heavy vehicle driver workload assessment, Task 1: Task Analysis Data and Protocols Review. Report DOT HS 808 467. Battelle Memorial Institute, Columbus, Ohio.

Van Winsum, W. & Godthelp, H. (1996). Speed choice and steering behavior in curve driving. *Human Factors*, 38(3), pp. 434-441.

Wheeler, W., Lee, J., Raby, M., Kinghorn, R., Bittner, A. & McCallum, M. (1996). Development of human factors guidelines for advanced traveler information systems and commercial vehicle operations: task analysis of ATIS/CVO functions. Report FHWA-RD-95-176. Battelle, Seattle, Washington.

Young, M.S. & Stanton, N.A. (1997). Automotive automation: investigating the impact on drivers' mental workload. *International Journal of Cognitive Ergonomics*, 1(4), pp. 325-336.

Young, M.S. & Stanton, N.A. (2002). Malleable attentional resources theory: a new explanation for the effects of mental underload on performance. *Human Factors*, 44(3), pp. 365-375.

Figure 1: Visual attention regions

Figure 2: Distribution of attention

Figure 3: Engagement in secondary tasks

Figure 4: Engagement in DVD task

Figure 5: Distribution of attention when not involved in the DVD task

Figure 6: Heart rate

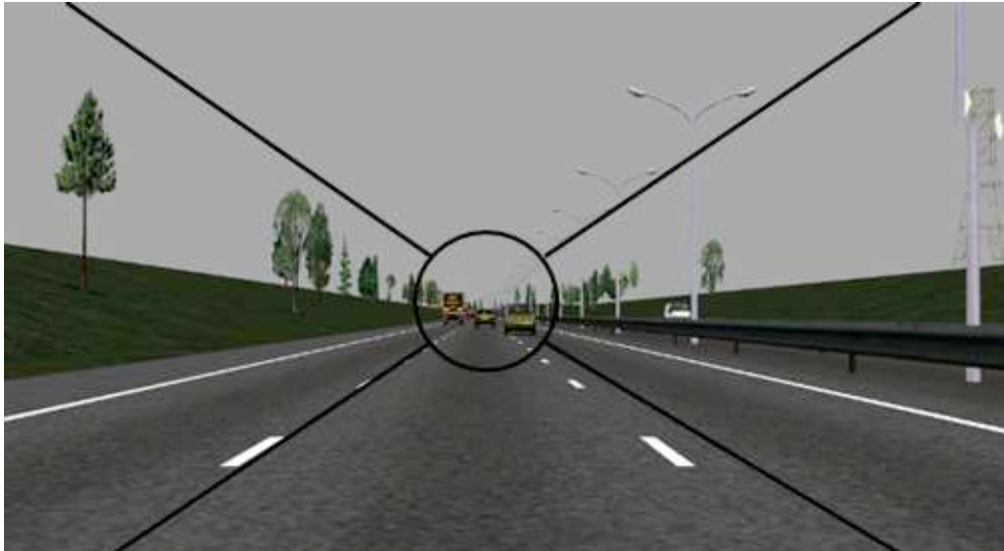


Figure 1: Visual attention regions

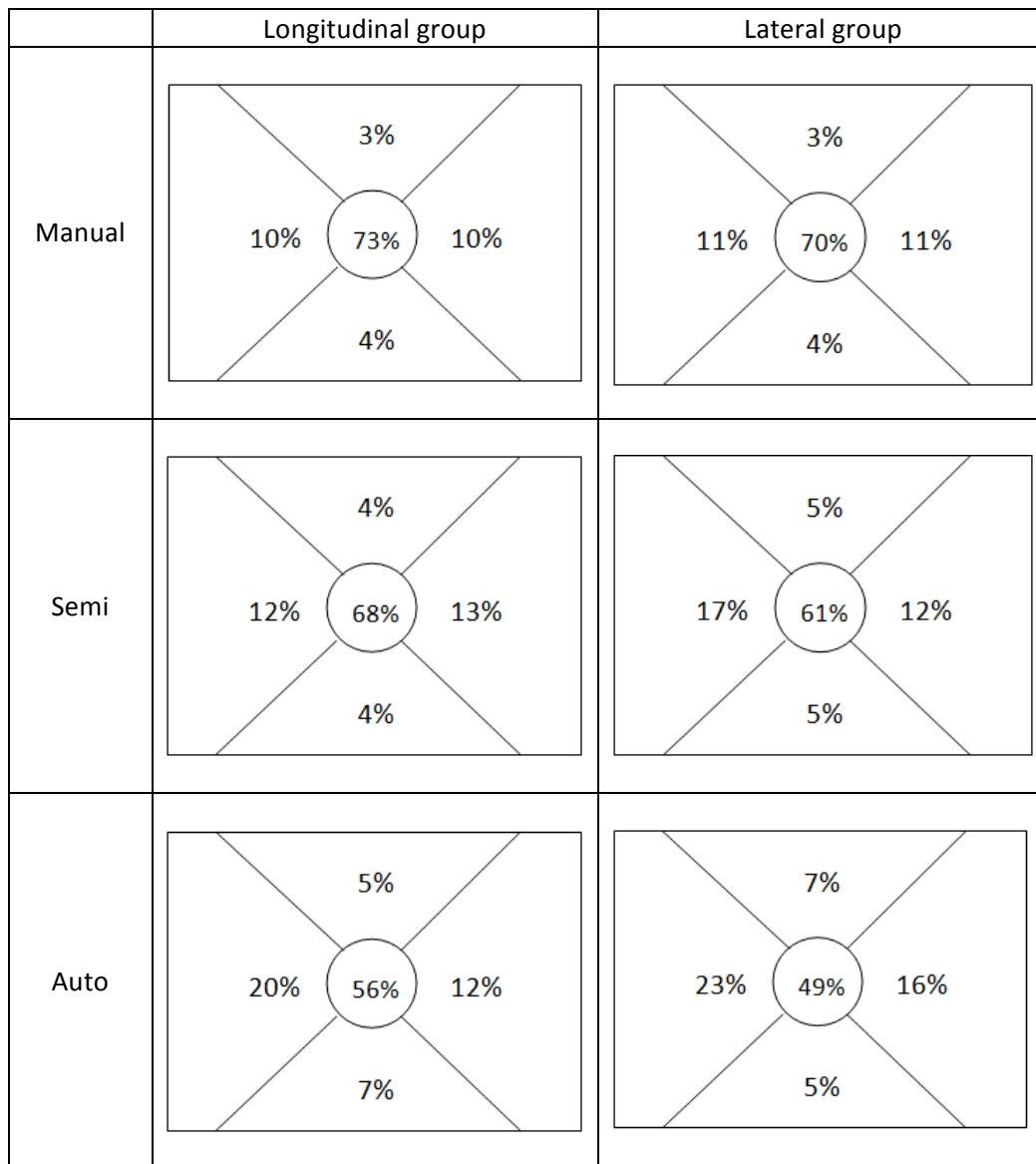


Figure 2: distribution of attention

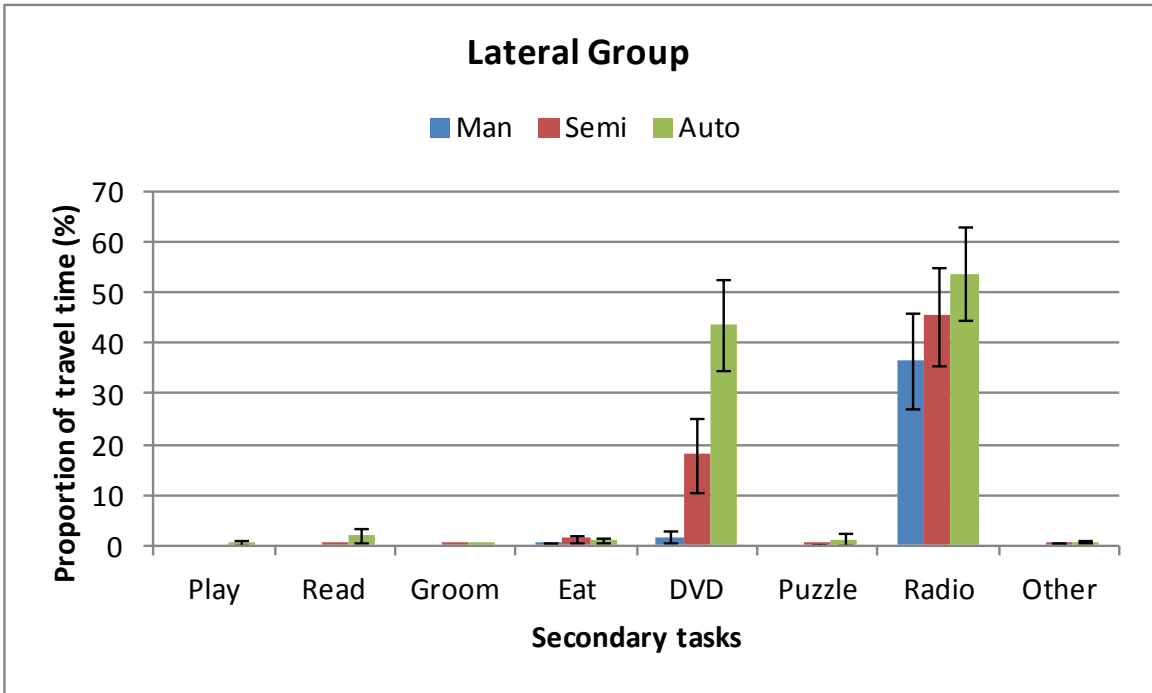
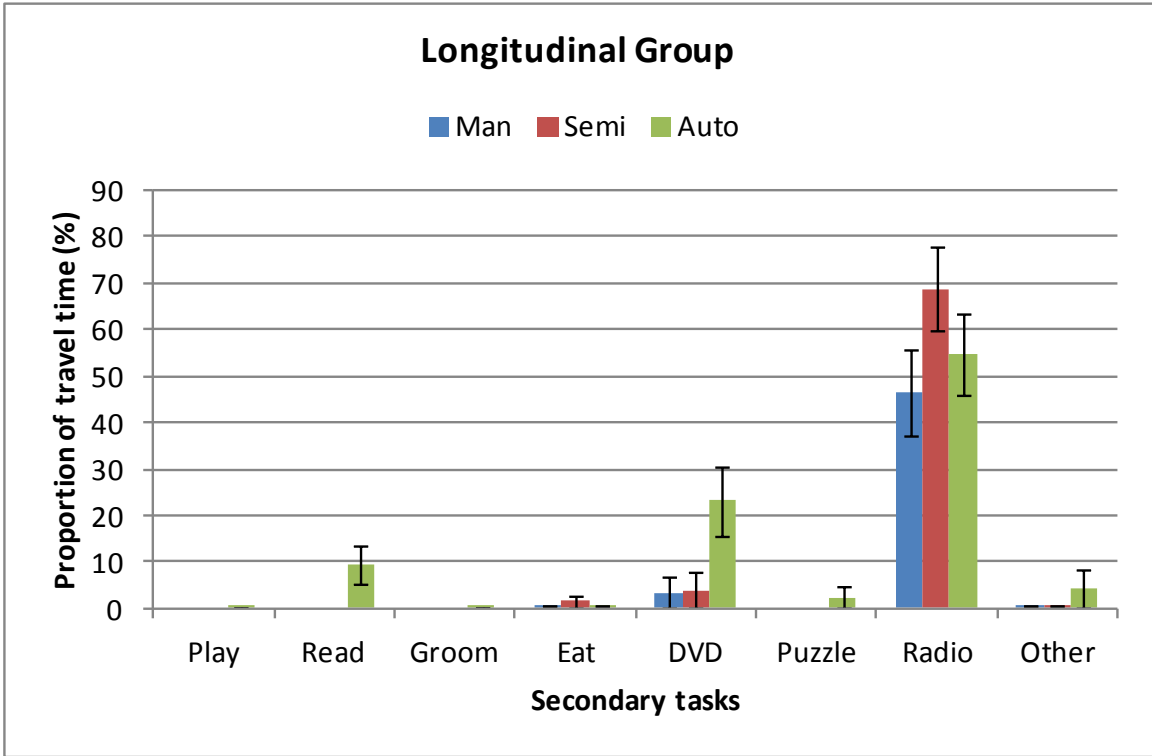


Figure 3: Engagement in secondary tasks

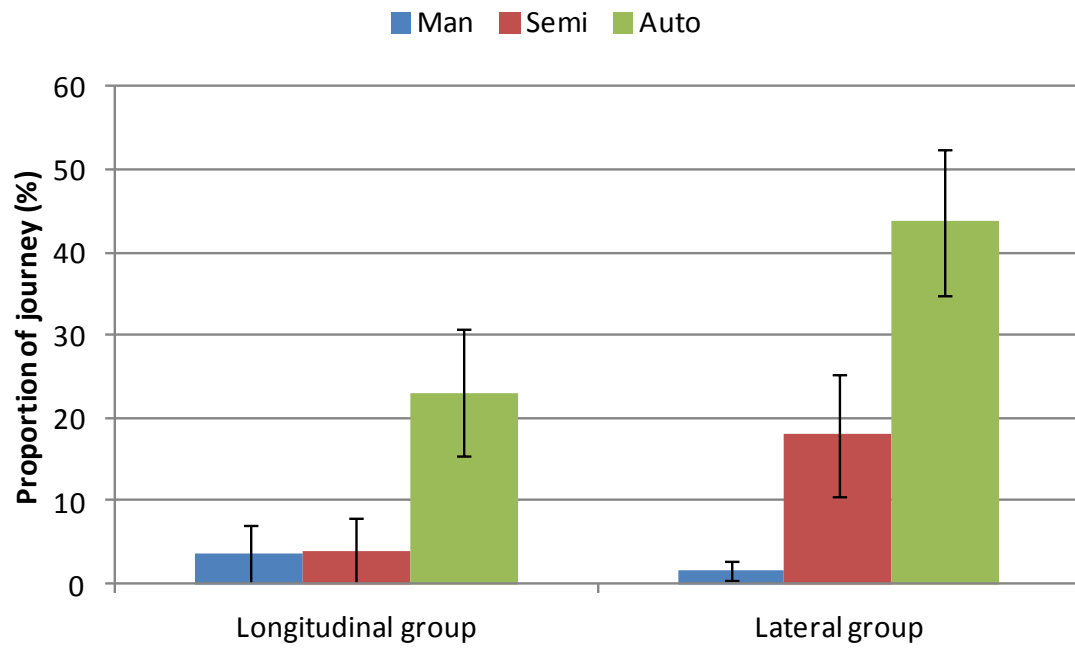


Figure 4: Engagement in DVD task

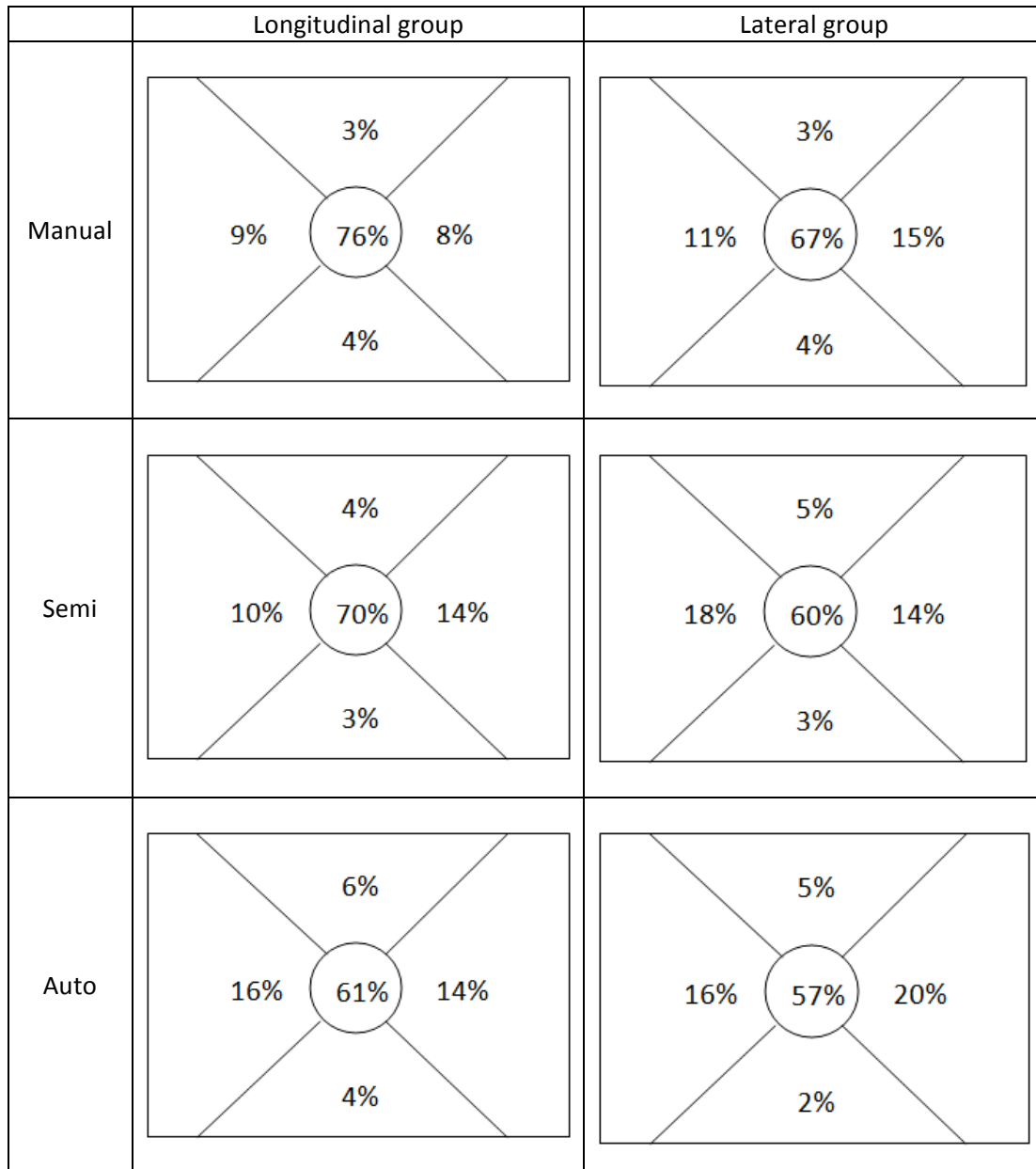


Figure 5: Distribution of attention when not involved in the DVD task

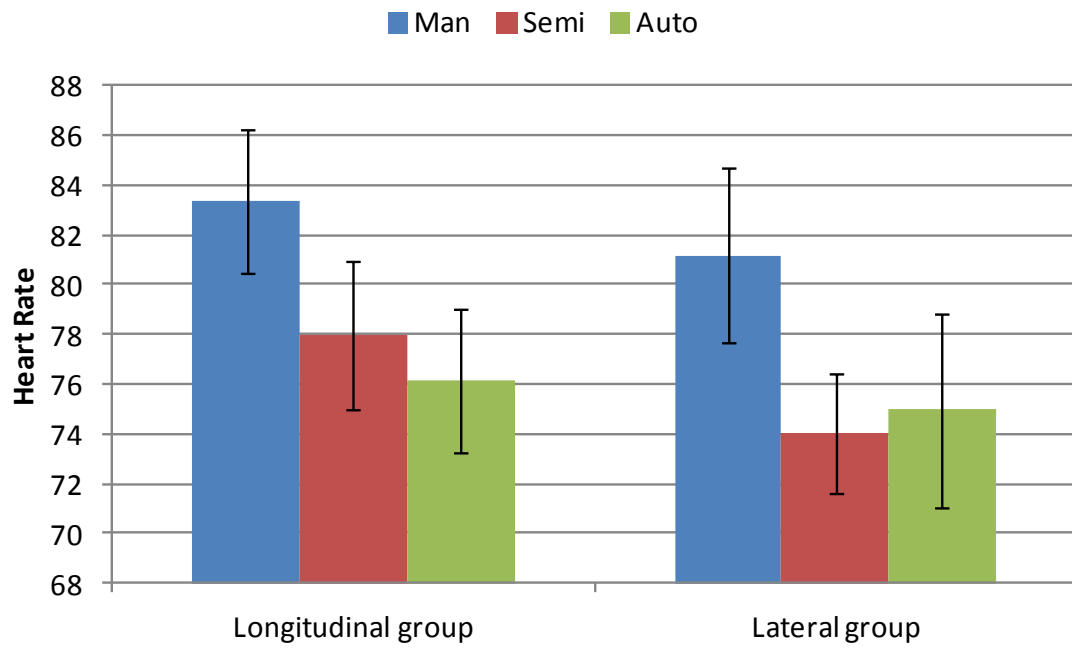


Figure 6: Heart rate

Table 1: ANOVA test results for the central region

Table 2: t-test results for the central region

Table 3: DVD engagement and associated ANOVA test results

Table 4: t-test results for DVD engagement

Table 5: ANOVA test results for the central region without involving the DVD task

Table 6: t-test results for the central region when the participants were not involved in the DVD task

Table 7: heart rate and associated ANOVA test results

Table 8: t-test results for heart rate

Table 1: ANOVA test results for the central region

Exp Group	Repeated-Measures ANOVA			Post-hoc t-tests		
	<i>F</i>	<i>p</i>	η_p^2	Pair	<i>p</i>	<i>D</i>
Long	F (2,38) = 20.05	< 0.01	0.51	Man – Semi	< 0.01	0.65
				Semi – Auto	< 0.01	0.85
				Man - Auto	< 0.01	1.33
Lat	F (2,36) = 21.81	< 0.01	0.55	Man – Semi	< 0.01	0.50
				Semi – Auto	< 0.01	0.71
				Man - Auto	< 0.01	1.21

Table 2: t-test results for the central region

Exp condition	Independent Samples t-test		
	t	p	d
Man	$t(43) = 0.76$	0.45	0.23
Semi	$t(41) = 1.71$	0.09	0.52
Auto	$t(42) = 1.50$	0.14	0.45

Table 3: DVD engagement and associated ANOVA test results

Exp Group	Mean			Repeated-Measures ANOVA			Post-hoc t-tests		
	Man	Semi	Auto	<i>F</i>	<i>p</i>	η_p^2	Pair	<i>p</i>	<i>d</i>
Long	3.5%	4.0%	23.1%	F (2,48) = 4.78	< 0.05	0.17	Man – Semi	0.34	0.03
							Semi – Auto	< 0.05	0.63
							Man - Auto	< 0.05	0.67
Lat	1.6%	18.0%	43.7%	F (2,46) = 13.90	< 0.01	0.36	Man – Semi	< 0.05	0.63
							Semi – Auto	< 0.01	0.65
							Man - Auto	< 0.01	1.37

Table 4: t-test results for DVD engagement

Exp condition	Independent Samples t-test		
	<i>t</i>	<i>p</i>	<i>d</i>
Man	$t(47) = 0.51$	0.61	0.15
Semi	$t(47) = -1.69$	0.09	0.48
Auto	$t(47) = -1.77$	0.08	0.51

Table 5: ANOVA test results for the central region without involving the DVD task

Exp Group	Repeated-Measures ANOVA			Post-hoc t-tests		
	<i>F</i>	<i>p</i>	η_p^2	Pair	<i>p</i>	<i>D</i>
Long	F (2,22) = 13.78	< 0.01	0.56	Man – Semi	< 0.01	0.68
				Semi – Auto	< 0.01	0.67
				Man - Auto	< 0.01	1.27
Lat	F (2,8) = 28.02	< 0.01	0.88	Man – Semi	< 0.01	0.83
				Semi – Auto	0.13	0.25
				Man - Auto	< 0.01	1.18

Table 6: t-test results for the central region without involving the DVD task

Exp condition	Independent Samples t-test		
	<i>t</i>	<i>p</i>	<i>d</i>
Man	$t(20) = 1.48$	0.15	0.63
Semi	$t(17) = 1.75$	0.09	0.87
Auto	$t(19) = 0.73$	0.47	0.37

Table 7: heart rate and associated ANOVA test results

Exp Group	Mean			Repeated-Measures ANOVA			Post-hoc t-tests		
	Man	Semi	Auto	<i>F</i>	<i>p</i>	η_p^2	Pair	<i>p</i>	<i>d</i>
Long	83.34	77.95	76.17	F (2,48) = 21.40	< 0.01	0.47	Man – Semi	< 0.01	0.37
							Semi – Auto	< 0.05	0.12
							Man - Auto	< 0.01	0.50
Lat	81.17	74.04	74.96	F (2,38) = 3.24	0.05	0.15	Man – Semi	< 0.05	0.53
							Semi – Auto	0.68	0.06
							Man - Auto	0.11	0.37

Table 8: t-test results for heart rate

Exp condition	Independent Samples t-test		
	<i>t</i>	<i>p</i>	<i>d</i>
Man	$t(44) = 0.59$	0.55	0.17
Semi	$t(45) = 1.30$	0.20	0.38
Auto	$t(46) = 0.54$	0.59	0.16

Oliver Carsten is Professor of Transport Safety at the Institute for Transport Studies, University of Leeds. He received his PhD in U.S. social history from the University of Michigan in 1981.

Frank Lai is a Senior Research Fellow at the Institute for Transport Studies, University of Leeds. He received his PhD in transport studies from the University of Leeds in 2005.

Yvonne Barnard is a Senior Research Fellow at the Institute for Transport Studies, University of Leeds. She received her PhD in social science informatics from the University of Amsterdam in 1995.

A. Hamish Jamson is a Principal Research Fellow at the Institute for Transport Studies, University of Leeds and manager of the University of Leeds Driving Simulator. He very recently obtained his PhD in Motion Cueing in Driving Simulators from the University of Leeds.

Natasha Merat is a Senior Research Fellow at the Institute for Transport Studies, University of Leeds. She was awarded her PhD in Psychology from the University of Leeds in 1999.