



Influences on flood frequency distributions in Irish river catchments

S. Ahilan, J. J. O'Sullivan, and M. Bruen

School of Civil, Structural and Environmental Engineering, University College Dublin, Dublin, Ireland

Correspondence to: J. J. O'Sullivan (jj.osullivan@ucd.ie)

Received: 1 March 2011 – Published in Hydrol. Earth Syst. Sci. Discuss.: 1 April 2011

Revised: 13 February 2012 – Accepted: 15 February 2012 – Published: 5 April 2012

Abstract. This study explores influences on flood frequency distributions in Irish rivers. A Generalised Extreme Value (GEV) type I distribution is recommended in Ireland for estimating flood quantiles in a single site flood frequency analysis. This paper presents the findings of an investigation that identified the GEV statistical distributions that best fit the annual maximum (AM) data series extracted from 172 gauging stations of 126 rivers in Ireland. Analysis of these data was undertaken to explore hydraulic and hydro-geological factors that influence flood frequency distributions. A hierarchical approach of increasing statistical power that used probability plots, moment and L-moment diagrams, the Hosking goodness of fit algorithm and a modified Anderson-Darling (A-D) statistical test was followed to determine whether a type I, type II or type III distribution was valid. Results of the Hosking et al. method indicated that of the 143 stations with flow records exceeding 25 yr, data for 95 (67 %) was best represented by GEV type I distributions and a further 9 (6 %) and 39 (27 %) stations followed type II and type III distributions respectively. Type I, type II and type III distributions were determined for 83 (58 %), 16 (11 %) and 34 (24 %) stations respectively using the modified A-D method (data from 10 stations was not represented by GEV family distributions). The influence of karst terrain on these flood frequency distributions was assessed by incorporating results on an Arc-GIS platform showing karst features and using Monte Carlo simulations to assess the significance of the number and clustering of the observed distributions. Floodplain effects were identified by using two-sample t-tests to identify statistical correlations between the distributions and catchment properties that are indicative of strong floodplain activity. The data reveals that type I distributions are spatially well represented throughout the country. While also well represented throughout the country, the majority of type III distributions appear in areas where attenuation influences from floodplains are likely. The majority of type II distributions appear in a single cluster in a region in the west of the country that is

underlain by karst but importantly, is characterised by shallow of glacial drift with frequent exposures of rock outcrops. The presence of karst in river catchments would be expected to provide additional subsurface storage and in this regard, type III distributions might be expected. The prevalence of type II distributions in this area reflects the finite nature of this storage. For prolonged periods of rainfall, rising groundwater levels will fill karst voids, remove subsurface storage and contribute to recharge related sinkhole flooding. Situations where rainfall intensities exceed karst percolation rates also produce high levels of surface runoff (discharge related flooding) that can promote type II distributions in nearby river catchments. Results therefore indicate that in some instances, assuming type I distributions is incorrect and may result in erroneous estimates of flood quantiles at these locations. Where actual data follows a type II distribution, flood quantiles may be underestimated by in excess of 35 % and for type III distributions, overestimates by over 25 % can occur.

1 Introduction

Flood studies often require the estimation of peak discharges for specified return periods. This is commonly based on a frequency analysis of a long record of annual maximum (AM) data at or near the site in question. Ideally, the return period of the estimated flow in a single site analysis should not exceed the length in years of the available flow record by more than a factor of two (at least 50 yr of data should be used to estimate the 100-yr flood) (NERC, 1975). Should record lengths not meet this requirement or where the available hydrometric data is of poor quality, a regional approach to flood frequency analysis is recommended.

The appropriate flood frequency distribution for modelling AM series has received widespread attention throughout the world (Benson, 1968; McMahan and Srikanthan, 1981; Ahmad et al., 1988; Cunnane, 1989; Bobee et al., 1992; El

Adlouni et al., 2008). However, the method followed in Ireland for estimating a design flood follows that in the Flood Studies Report FSR (NERC, 1975) in which, similar to the UK, a Generalised Extreme Value (GEV) distribution is recommended. Findings from the recently conducted Flood Studies Update (FSU) programme in Ireland further reinforced the choice of GEV distributions for modelling Irish AM data (Cunnane et al., 2008). The GEV distribution is a flexible three parameter model that encompasses the type I – Gumbel, type II – Frechet and type III – Weibull extreme value distributions. The cumulative distribution function (CDF) of a GEV distribution can be written as:

$$F(x) = \exp \left\{ -[1 - k(x - u)/\alpha]^{1/k} \right\} \quad k \neq 0 \quad (1)$$

$$F(x) = \exp \{-\exp[-(x - u)/\alpha]\} \quad k = 0 \quad (2)$$

where u and α are location and scale parameters of the GEV distribution that are estimated using the sample mean and variance respectively. The value of the shape parameter, k , determines the extreme value type I, II and III distribution. Specifically, the three cases $k=0$, $k < 0$ and $k > 0$ correspond to the Gumbel, Frechet, and Weibull distributions. The inverse relationships of Eqs. (1) and (2) respectively, are:

$$x = u + \alpha \left\{ 1 - (-\ln F(x))^k \right\} / k \quad k \neq 0 \quad (3)$$

$$x = u - \alpha \ln(-\ln F(x)) \quad k = 0 \quad (4)$$

In Ireland, as in many countries across the world, a GEV type I distribution is commonly used to estimate flood quantiles from single site flood frequency analysis. Application of a two parameter GEV type I model in flood frequency analysis is relatively simple (Phien, 1987) and is associated with lower standard errors for parameter and corresponding quantile estimates for shorter records (McKerchar and Pearson, 1990). However, the recommendation of a Gumbel two-parameter flood frequency distribution at all locations in a drainage network is not sufficiently flexible to account for variations in the shape of the flood frequency distribution that potentially arise from climatic, hydraulic, hydrological and hydro-geological influences in Irish catchments. Climatic variations, influenced by the Atlantic Ocean and the warming effects of the Gulf Stream are reflected in the marked differences in rainfall across the country. Mountainous regions in the west and south-west of the country can experience annual rainfall totals in excess of 2800 mm that contrast sharply with rainfall totals of less than 1000 mm in large areas of the east of the country. Hydrological and hydraulic influences include the effects of attenuation arising from lakes and bogs and from floodplain effects. Hydro-geological influences include the likely effects on flood generation from carboniferous limestone and its associated karst features which are prevalent in over half of the country. Application of the GEV type I distribution without due consideration of the impacts of these features may produce errors in estimates of flood

quantiles. Therefore, in some situations it may be appropriate to use a three-parameter GEV distribution that in addition to scale and location parameters, is also described in terms of a shape parameter (Jenkinson, 1969). Furthermore, and in the context of using groups of similar catchments or “pooling groups” to determine growth factors that can scale index floods to provide flow estimates of required return periods, data from floodplain-affected (FPA) areas has the capacity to contaminate growth curve estimates at non FPA sites. Similarly, it is doubtful that without detailed consideration of the physical and baseflow characteristics of the mechanics of flood generation, that data from a regional flood frequency analysis in a karst region, could be used to accurately predict a flood quantile at another site in the same region (Benzeden et al., 1993).

This paper explores hydraulic and hydro-geological influences in flood frequency distributions in Irish river catchments. Annual maximum (AM) data sets of 172 gauging stations in Ireland were analysed and the GEV statistical distributions that best fit the hydrological data were identified. The dataset covered a full range of climatic, hydrological, hydraulic and hydro-geological characteristics that are important for flood generation in Ireland. The influence of karst terrain on these flood frequency distributions is assessed by incorporating results on an Arc-GIS platform showing karst features and using Monte Carlo simulations to assess the significance of the number and clustering of the observed distributions. Floodplain effects are identified by using two-sample t-tests to identify statistical correlations between the distributions and catchment properties that are indicative of strong floodplain activity. Potential errors in flood estimates are obtained by comparing flood quantiles from GEV distributions to those assuming a GEV type I distribution.

Studies of the type presented are not well reported in scientific literature and when undertaken have tended to be limited to a specific river reach or particular region within a given river basin (e.g. Archer, 1980, 1989; Mason et al., 1988; Mason, 1992; Woltemade and Potter, 1994; McCarthy and Naden, 1995; Benzeden et al., 1993). This study is considerably broader in scope and represents an assessment at national scale, in which hydraulic, hydrological and hydro-geological complexities are investigated. Furthermore, previous studies in which the hydraulic effects of floodplain inundation and storage were assessed have usually used detailed hydrodynamic models to define the extent of active floodplains. The extensive data requirements of these models make them suitable for specific sites but their application for more general studies is more problematic. The investigation of floodplain influences on flood frequency distributions presented in this paper is based on much simpler, generic indicators of floodplain activity or inundation.

2 Background

2.1 Hydro-geological influences

Over half of Ireland is underlain by Carboniferous limestone and lowland karsts occupy approximately 75 % of this limestone area (Coxon, 1987; Williams, 1970). The hydrology and geomorphology of Irish karstic terrain is intimately and genetically linked to perhaps a greater extent than with any other rock type (Drew, 1990). Conditions however, are not uniform throughout the country. Deposits of glacial drift mantle the bedrock over most low lying areas in central Ireland. The depth of these glacial deposits is generally lower in the west of the country (less than 3 m) than in the east (up to 10 m) and in many areas, rock outcrops are exposed (Drew, 2008; Jones and Gunn, 1982). The low gradient topography and high effective rainfall in these western karst regions mean that river flooding and poor land drainage over large areas are acute problems (Drew and Coxon, 1988). Natural karst systems exhibit extremes in heterogeneity and variability of geologic, morphologic, hydro-geologic, hydrologic, hydraulic, ecological and other parameters in space and time (Denic-Jukic and Jukic, 2002; Bonacci, 2004). A wide range of closed surface depressions, a well-developed underground drainage system (supported by an irregular network of pores, fissures and fractures of various size and form), and a strong interaction between the circulation of surface water and ground water are typical features of karst catchments (Bonacci et al., 2006).

The flow in karst regions is composed of three components; surface flow, subsurface flow and groundwater flow. Karst catchments therefore behave differently with seasonal variations in rainfall. Zhou (2007) describes the types of flooding in karst terrains. In low flow conditions, transmission losses to the underlying limestone from well developed surface and underground karst landforms can be significant (Drew, 1976). In contrast, karst areas at wetter times can be characterised by high water tables and extensive groundwater flooding (discharge-related) for prolonged periods (Drew, 1980). For flash floods, hydrograph volume is important. Due to fast infiltration rates, overland flow and the existence of open water courses on karst terrains are low (Bonacci et al., 2006). A significant proportion of the initial rainfall is therefore used to fill karst voids. However, the volume of these voids is low and for prolonged and persistent rainfall, groundwater levels can rise rapidly with consequent recharge-related sinkhole flooding on the surface.

A complex issue in karst hydrology, hydrogeology and geology is the delineation of catchment boundaries and the origins of springs and stream flows. A spring in one river catchment for example may receive water from a sinking stream in another catchment (Coxon and Drew, 2000). The hydrology of karst terrain is characterised by strong, direct and dynamic interactions between groundwater and surface water flows (Bonacci and Zivaljevic, 1992). Because flow is mostly

subsurface, direct hydrometric methods are difficult to use for monitoring and analysis (Bonacci, 2001; Bailly-Comte, 2008). Also, the catchment areas of springs cannot be defined in conventional hydro-geological terms. The surface catchments of losing and sinking rivers which contribute to spring flow must also be considered.

The limited research available that describes the influence of karst terrain on flood frequency analysis highlights the variable influences of such landscapes on these distributions. For example, Benzedden et al. (1993), in an investigation of various flood frequency distributions in 21 stations in seven karst river basins in Turkey, concluded that flood peaks follow no specified distribution. Although literature supports the assertion that underlying karst can significantly attenuate low to mean flows, its effects on flood flows, particularly in the context of high saturation levels, is less well understood. It is likely however, that the prevalence of karst features in catchments, together with karst influences on base flow contributions can affect the distribution of flood peaks in rivers (Benzedden et al., 1993).

2.2 Hydrological and hydraulic influences

Irish river catchments are characterised by an extensive network of bogs, lakes and topographical depressions which provide storage to flood flows. More importantly, the mild gradient of many river channels promotes additional attenuation in natural floodplains. These influences tend to be greater than in UK catchments and may, in part, explain why many growth curves in Ireland are mildly graded (e.g. NERC, 1975).

The shape, the size, extent and spread of natural floodplains reflect the dynamics of river systems (Bhowmik, 1984). Once overbank, the complexity of river flows is increased by 3-dimensional momentum exchanges between the main and floodplain channel zones (Sellin, 1964; Zheleznyakov, 1965). This is further increased by the patterns of relief which produce spatial and temporal variations in flood inundation for given discharge magnitudes. Lewin and Hughes (1980) noted that patterns of relief alter flow patterns of inundating waters through sequences of filling, transmission and drying-out of floodplains. Lewin and Manton (1975) highlight the role of vegetation, artificial structures and development in restricting and compartmentalising overbank flow and storage. As a flood moves down a river it is subject to a series of influences that can alter the time of arrival and peak flow of a flood hydrograph. Vegetation and riparian forests can increase the infiltration and storage capacities of the soils and retard significantly the overland flow. Vegetation therefore, contributes to flood peak attenuation, the effect being most pronounced for small to moderate floods in smaller catchments (Subramanya, 1984).

Although a range of geometrical and hydraulic resistance properties of a river channel impact on storage and drainage efficiency (Archer, 1980), floodplains can act as a form of

storage reservoir, providing additional storage for overbank flows. This storage and later release of the stored water can produce flood hydrographs that have lower peaks and longer durations compared to those from similar watersheds with no floodplain storage. The effects are likely to be more pronounced for low volume, moderate-frequency events (return periods of 4–50 yr) (Diehl, 1990; Woltemade and Potter, 1994) where floodplain depths are low. At higher return periods, conveyance rather than storage is likely to be the dominant influence and flood peaks will tend to be transferred downstream with less attenuation. Given that many bankfull recurrence intervals are in the order of 1–3 yr (see for example Richards, 1982; Petit and Paquet, 1997; Castro and Jackson, 2001) and that mean and median annual flows have return periods of 2.33 (assuming GEV type I distributions) and 2 yr respectively, flows in natural channels can frequently be subjected to a combination of these complex storage and attenuation effects.

These physical processes and attenuating floodplain characteristics can significantly influence flood frequency distributions. Haider (1992), using a modular hydrological flood routing model based on non-linear Muskingum-Cunge routing, showed that floodplain inundation alters significantly the characteristics of flood waves. Wolff and Burges (1994) determined that the change in flood frequency distribution downstream of a floodplain is influenced by main channel and floodplain resistances, the width to depth ratio of the floodplain and both the floodplain width and longitudinal slope. Without being specific, Wolff and Burges (1994) concluded that a GEV type I upstream flood frequency distribution ($C_v=0.6$) could change to other GEV distributions when floodplain inundation occurred. Archer (1989), in a study of the River Tees in the UK, observed that floodplains could attenuate flood peaks by as much as 30 % but that this was variable and dependent on floodplain geometry and hydrograph characteristics. The effect was more pronounced for sharply peaked, low volume floods. In a previous study, Archer (1980) attributed floodplain storage effects in the River Coquet at Rathbury and the River Skerne at Preston, both in the UK, to low flood growth rates and to GEV type III distributions. Furthermore, extensive floodplain inundation was shown to produce shifts from GEV type II distributions towards GEV type III distributions. A similar tendency for floodplain effects to produce GEV type III distributions, in this case from upstream GEV type I distributions, is also reported in the literature (Mason et al., 1988; Mason, 1992; McCartney and Naden, 1995). Although a specific flood frequency distribution is valid only at a specified site, it is common to assume that distributions for multiple sites within a geographically homogenous area are the same. Given that floodplain inundation can alter the shape parameter of an upstream flood frequency distribution, this assumption could produce errors in estimates of flood quantiles at locations downstream of floodplains.

3 Methodology

Annual maxima (AM) data series from 172 Irish gauging stations of 126 rivers with record lengths varying from 7 to 69 yr was obtained for the Irish hydrometric network. Record lengths exceeded 25 yr in 143 stations. Catchment areas varied from 10 km² to 2460 km² and channel gradients varied from 0.2 m km⁻¹ to 25 m km⁻¹. The analyses in this study is based on the assumption that Irish AM data series are independent and identically distributed (assumption of stationarity). In the context of recommended flood estimation procedures, national work for the Irish Flood Studies Update (Cunnane et al., 2008) indicates that potential impacts from anthropogenic influences (urbanisation, reservoirs, drainage systems, water abstraction, changing land use or changing river conditions), climate variability or climate change are not widely observed and traditional methods of hydrological flood frequency analyses, as used in this research, are justified. Furthermore, the urbanised fraction in the catchments analysed was low and for almost all catchments, was less than 5 %. Hollis (1975) showed that floods with return periods in excess of 1 yr are not considerably affected by 5 % paving of their catchment and in this regard, assumed stationarity with regard to urbanisation is considered reasonable.

Analysis of these AM series was undertaken to identify the GEV distribution that best fits the data at each station and explore the hydraulic and hydro-geological factors that influence flood frequency distributions. This was undertaken in three stages that involved:

1. determining the summary statistics for each AM series;
2. identifying GEV distributions for each AM series;
3. assessing the spatial factors that influence distributions.

3.1 Summary statistics

Descriptive statistical parameters that included standard deviation (s), skewness (G), Hazen skewness (H -skewness), kurtosis (κ), coefficient of variation (C_v), $L - C_v$, L -skewness ($L - C_s$) and L -kurtosis ($L - C_\kappa$) were determined from AM series flow data at each station. For the limited record lengths that were available, the theoretical product moments and L -moments were equated to corresponding sample product moments and L -moments.

3.2 Identification of GEV distributions

Probability plots and statistical tests are commonly used to determine the distribution for observed AM data at a given location. This study utilised three approaches of increasing statistical competence for this purpose. These were:

1. probability plots;
2. moment and L -moment diagrams;
3. goodness of fit statistical tests.

3.2.1 Probability plots

Probability plots were used in this paper to visually identify whether GEV type I, type II or type III distributions best fitted the AM data series at each of the 172 stations analysed. A probability plot is a graphical technique where the magnitude of a random variable is plotted against its cumulative probability. In this study, both GEV type I and GEV probability plots were prepared for the sites investigated.

Location ($\hat{\mu}$) and scale ($\hat{\sigma}$) parameters for GEV type I distributions together with shape (\hat{k}) parameters for GEV distributions and estimated flood quantiles were determined from AM flow records at each gauging station using the method of probability-weighted moments. Flood quantiles for a GEV type I distribution were plotted against the Gumbel reduced variate at these stations. At stations where a linear relationship between flood quantiles and the Gumbel reduced variates correlated closely with measured data, it is possible that the sample is from a GEV type I distribution.

A strong deviation from this linear relationship may indicate that the sample is not from a GEV type I distribution and comes therefore from an alternative GEV distribution (type II or type III). The inclusion of the additional shape parameter in GEV distributions provides the added flexibility for the distribution to better fit the observed AM data in these cases.

A major statistical drawback in the method of probability plots is that no allowance is made for the fact that not all members of an ordered sample are subject to the same amount of sampling variation. The observations at the upper end of a sample, in particular, have large sampling variance (NERC, 1975). Therefore, uncertainty exists when a distribution is identified from probability plots, particularly when limited data is available in the high flow range.

3.2.2 Moment and L -moment diagrams

A widely used technique for identifying appropriate frequency distributions to observed data is the method of moments and L -moments. Values of skewness and kurtosis together with L -skewness and L -kurtosis depend on the shape parameter of a particular distribution and are thus related. Moment ratio diagrams of kurtosis against skewness and L -moment diagrams of L -kurtosis against L -skewness were used to identify the parent population from which the AM data for the 172 gauging stations analysed is derived. Sample estimates of skewness, kurtosis, L -skewness and L -kurtosis were derived from the AM data for the 172 gauging stations.

The distribution that, by visual inspection, matches closely to the area of scatter of measured data in the moment or

L -moment ratio diagram is expected to be a suitable candidate distribution to model the measured data. However, in practice, where samples are finite, both product moment and L -moment ratios are associated with sampling uncertainty. Therefore exact values of these ratios for GEV type I distributions are rarely obtained. However, issues with bias and sample size related bounds are more significant in product moment ratios than in L -moment ratios for samples from skewed populations and this reduces the discriminating power of the method for identifying appropriate distributions among potential candidate distributions for AM data series (Hosking, 1990; Vogel and Fennessey, 1993; Hosking and Wallis, 1997). Therefore, the method of L -moments is more robust for extreme values and is now extensively used for distribution identification. Moreover, Van Gelder (1999) illustrated that the computation requirements for L -moment techniques are relatively low and yield better results with non-homogeneous data compared with other traditional techniques, such as maximum likelihood and least-squares.

As a result of this bias in finite samples, the sole use of product moment diagrams and to a lesser extent, L -moment diagrams, is unlikely to be sufficient for identifying the distribution from which a sample has come. To assist in this regard, a Monte Carlo simulation was undertaken to generate 172 synthetic samples of 50-yr from a GEV type I population. Comparison of measured data from the 172 sites investigated with these synthetic samples allowed distributions to be identified. If data from the analysed station is shown on moment and L -moment diagrams to fall within the cluster of synthetic GEV type I samples, it is then probable that it comes from a GEV type I population. If plotted data is outside of this cluster, it is likely to be from an alternative GEV distribution (type II or III).

3.2.3 Goodness of fit statistical tests

Two goodness of fit statistical tests were used in this study. The first of these from Hosking et al. (1985) (referred to as the Hosking method) was considered appropriate given that the algorithm is relatively simple to apply and has good discriminating power, particularly for small sample sizes. Other statistical tests from Van Montfort (1970), Otten and Van Montfort (1978) and Laio (2004) were also considered. The tests from Van Montfort and Otten and Van Montfort however, are based on product moment estimates (rather than PWMs as in the Hosking method) and have therefore less statistical power to discriminate for different GEV distributions. A modified Anderson-Darling (A-D) method from Laio (2004) is the second test used to identify whether Irish AM data follows the two parameter GEV type I or three parameter GEV distributions. This is based on maximum likelihood estimates of the distribution parameters and because of the modifications to the method that increases its discriminating power for small sample sizes, was also considered to be suitable.

The Hosking method estimates the shape parameters, \hat{k} , for the AM series at each site. The shape parameter for a limited sample size recommended to have at least 25 yr of AM data is determined from:

$$\hat{k} = 7.8590 c + 2.9554 c^2 \quad (5)$$

where

$$c = \frac{2 \hat{M}_{110} - \hat{M}_{100}}{3 \hat{M}_{120} - \hat{M}_{100}} - \frac{\ln 2}{\ln 3} \quad (6)$$

and where \hat{M}_{100} , \hat{M}_{110} and \hat{M}_{120} are probability weighted moments.

The record length of the 172 gauging stations used in this study indicates that 143 (83 %) stations satisfy this requirement. The 29 stations (17 %) that did not have the required record length were excluded from the analyses.

Whether \hat{k} is positive or negative is important in fully assigning a distribution to a given AM series. A positive value indicates either a GEV type I or type III distribution and for a negative value, the distribution will be either type I or type II. However, associated errors in parameter estimation need to be incorporated in this decision making process. The Hosking algorithm provides a further statistical test to investigate the GEV type I null hypothesis with another GEV distribution (type II or type III) as the alternative.

The modified A-D test was undertaken in a number of stages for the 143 Irish AM data sets with record lengths of at least 25 yr. Asymptotically efficient location ($\hat{\mu}$) and scale ($\hat{\sigma}$) parameters for GEV type I distributions and location, scale and shape (\hat{k}) parameters for GEV distributions were initially determined using the maximum likelihood method. Following this, the A-D test statistic from the ordered AM samples was determined. The shape parameter of GEV distributions influences the empirical distribution function (EDF) parameter estimation procedures and to account for this, the transformed GEV distribution was adjusted with the estimated shape parameter. In practical hydrology, sample size (n) is typically small and this diminishes the importance of having very accurate asymptotic parameter estimations. Therefore, the transformed distribution was adjusted for sample size. Finally, the estimated test statistic was compared with a critical value corresponding to a 95 % significance level to determine whether that particular sample was derived from a GEV type I or GEV population.

3.3 Assessing the spatial factors that influence distributions

The influence of karst terrain on flood frequency distributions was assessed by incorporating results on an Arc-GIS platform showing karst features. The significance of the number and clustering of the flood frequency distributions in areas underlain by karst was explored using Monte Carlo simulations. Areas in the west of Ireland where karstic terrain is

characterised by low depths of glacial deposits and exposed rock outcrops are most significant in this regard.

The hydraulic effects of floodplains were identified by using two-sample t-tests to identify statistical correlations between the GEV distributions and catchment properties associated with strong floodplain activity. These include the channel slope, the extent of alluvium deposits adjacent to river channels and areas of grassland pasture (that would typically include floodplain areas) in river basins. Data for these properties is available at all locations in the hydro-metric network following work for the Irish Flood Studies Update (FSU) programme (details of which are in Reed and Martin, 2005).

4 Results

4.1 Summary statistics

Results of the statistical analysis for the 172 stations analysed are shown in Fig. 1. Figure 1a, c and e indicate that there is a reasonable relationship between catchment area and the mean, median and standard deviation of the annual maxima flow series. The least squares regression equations shown, indicate respectively that the mean, median and standard deviation of the analysed AM series is proportional to $A^{0.68}$, $A^{0.69}$ and $A^{0.62}$, A being the catchment area. The scatter in Fig. 1a, c and e indicates that the use of simple regression relationships for discharge estimation can be associated with significant error and highlights the benefits of site specific data for deriving flood estimates.

The coefficient of variation, C_v in Fig. 1d describes the standard deviation as a proportion of the mean for the annual maximum flow record at each site. Estimated values of C_v vary typically from 0.1 to 0.4 for most gauging stations with a small number being outside of this range. The average value of 0.27 in this analysis is based on data from 172 stations and is marginally lower than the value of 0.3 in the Flood Studies Report (FSR) (NERC, 1975, p. 122) that was determined from significantly shorter records at 63 stations. Low C_v values at most locations reflect the low permeability of Irish catchments and the high annual rainfall which does not vary significantly from year to year. The higher values observed in Fig. 1d may result from either or a combination of uncharacteristic rainfall or errors in the flow record (Cunnane, 1989). Skewness is very sensitive to sample size, n , and is a measure of the symmetry in hydrological data. Figure 1g indicates that skewness for the AM series analysed varies from 1.4 to 3.0 with the majority of values occupying the band from 0 to 2.0. H -skewness provides an unbiased estimation of skewness and reduces the sensitivity associated with small sample sizes. The average H -skewness in Fig. 1i, determined by multiplying skewness values by $(1 + 8.5/n)$ is 0.77. This value is considerably lower than the value of 1.63 reported in the FSR (NERC, 1975, p. 122) for

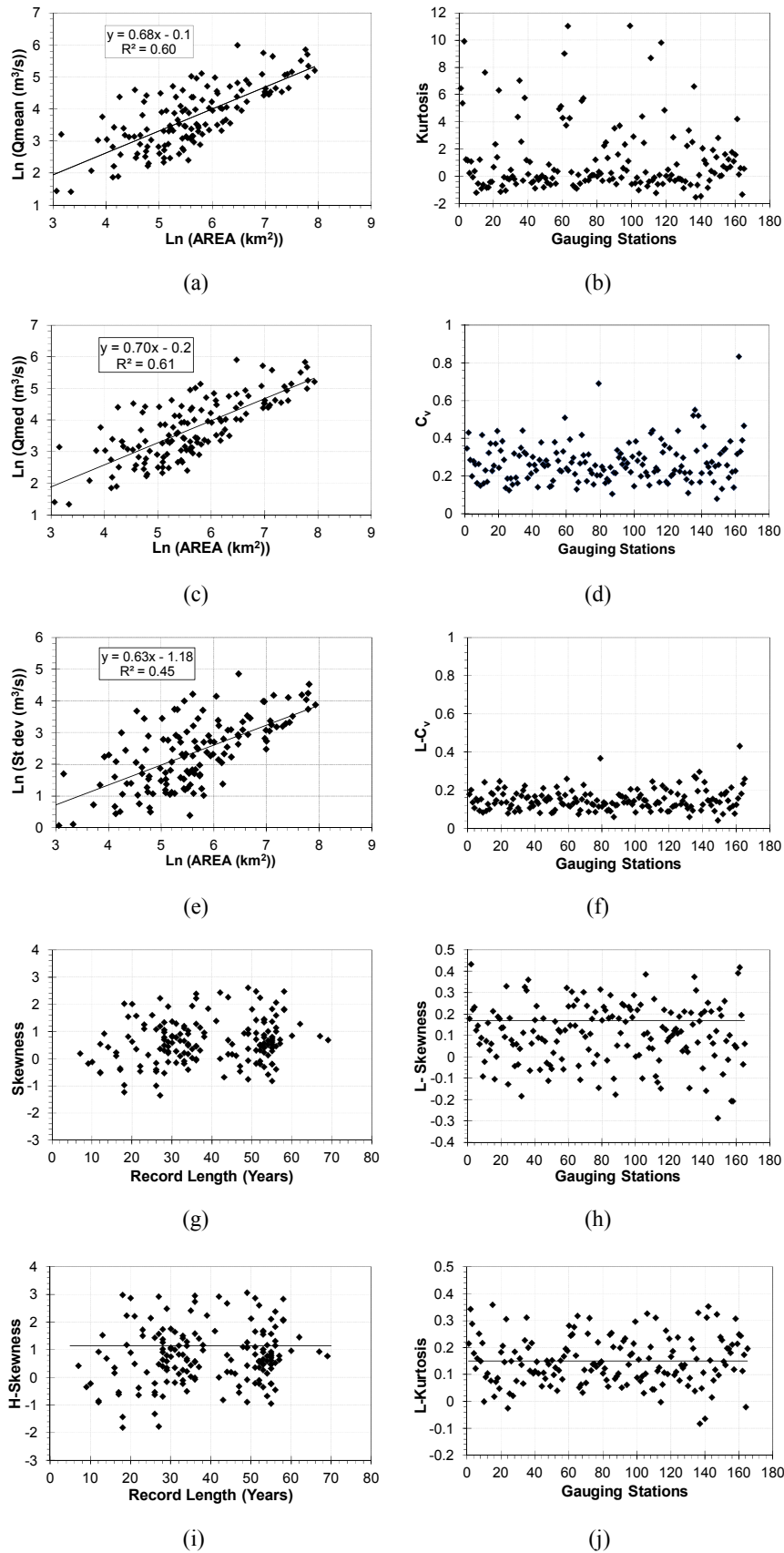


Fig. 1. Descriptive statistics of the 172 gauging stations analysed.

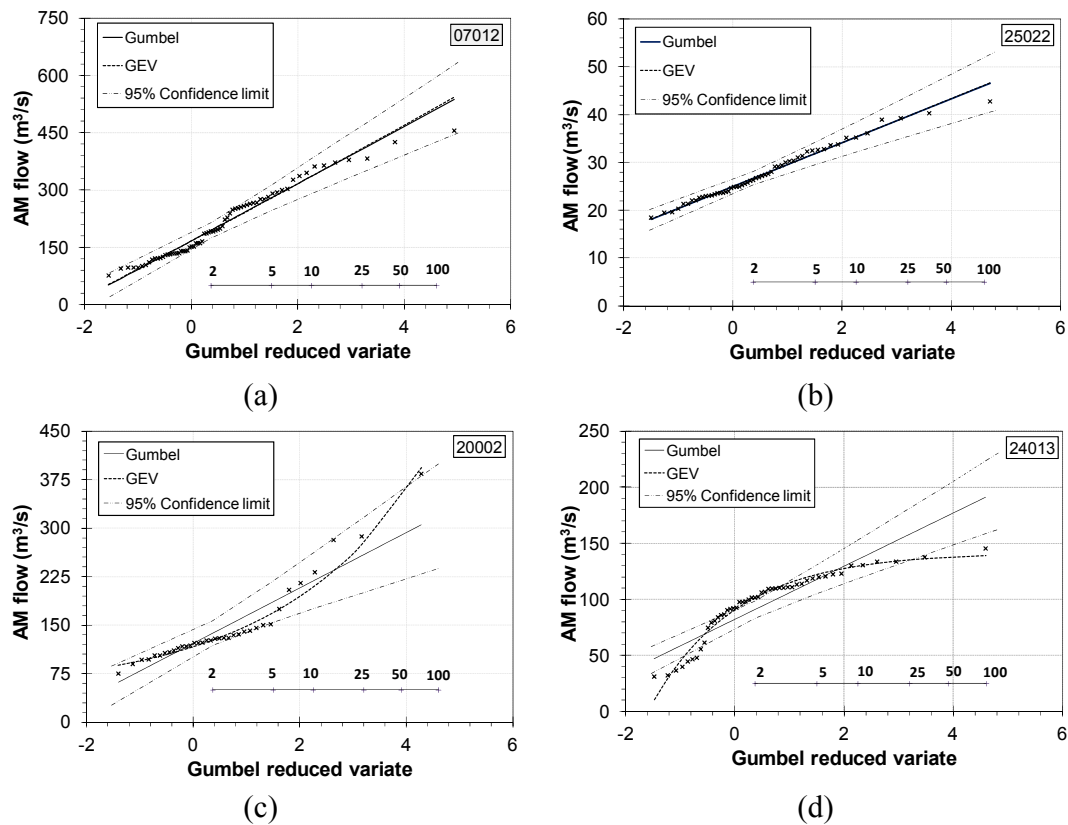


Fig. 2. Probability plots of AM flow ($\text{m}^3 \text{s}^{-1}$) against Gumbel reduced variates for (a) Station 07012, (b) Station 25022, (c) Station 20002 and (d) Station 24013 in Irish hydrometric network.

Irish catchments and again reflects differences in the number of data years in the FSR analyses compared to that presented in this paper. The H -skewness value provides an indication of the distribution that best fits the data at a particular station. A GEV type I distribution is a fixed skew (H -skewness = 1.14) statistical model. Samples from GEV type II and type III distributions therefore exhibit higher and lower skew values respectively. In general, if the parent population has a lower or higher H -skewness than an assumed fixed skew model, the upper quantile estimates will be biased upwards or downwards respectively. The kurtosis is a measure of the peakiness of the distribution fitted to the AM series. Figure 1b shows that the estimated kurtosis ranges from -1 to 3 . Lower values indicate that the distribution is concentrated about the mean value and is characterised by a short tail; higher values reflect lower, more even distributions that portray longer tails.

Values of C_v , skewness and kurtosis obtained from individual hydrological records of the usual length (circa 25 yr) have relatively large standard errors as well as being biased downwards (Cunnane, 1985). Another drawback in using product moment estimators is that they have sample related boundness. Kirby (1974) showed that these bounds depend upon sample size so that C_v is bounded by the in-

terval $(0, (n-1)^{1/2})$ and sample skewness is bounded by $|G_n| \leq (n-2)/(n-1)^{1/2}$. To overcome these limitations, Probability Weighted Moment (PWM) and L -moment estimates are also used in this paper to describe the summary statistics of observed samples. These moments are not influenced to the same extent by the effects of sampling variability and bias that result from higher order exponents of the product moment equations (Hosking, 1990; Vogel and Fennessey, 1993).

4.2 Identification of GEV distributions

4.2.1 Probability plots

Indicative probability plots for four of the 172 gauging stations that were analysed are shown in Fig. 2. Plots relate to Stations 07012 (River Boyne – 69 data years), 25022 (River Camcor – 55 data years), 20002 (River Bandon – 50 data years) and 24013 (River Deel – 49 data years) in the Irish hydrometric network. The 95 % confidence intervals of estimates from the GEV type I distribution at each station are also shown.

Figure 2a and b indicate that the observed AM data is reasonably well aligned to the GEV type I (Gumbel)

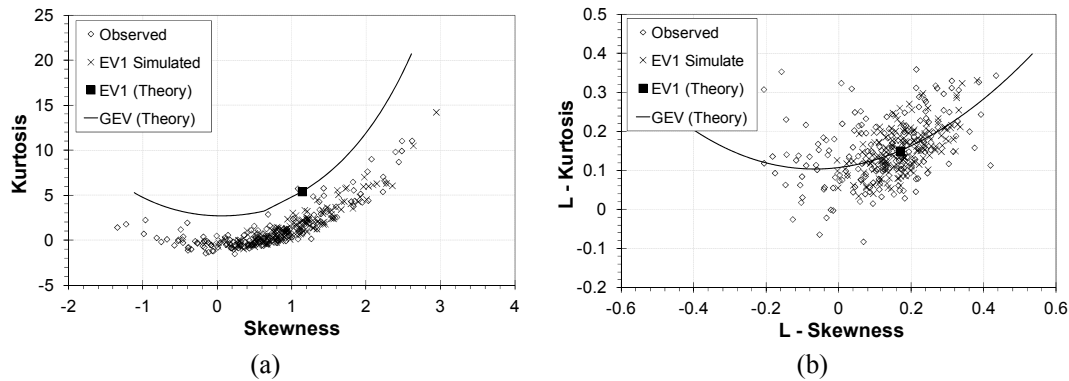


Fig. 3. Moment (a) and L -moment (b) diagrams for the 172 stations analysed. The 172 simulated GEV type I samples are also shown.

distribution. Figure 2c and d however, show that the shape of the probability plot is convex for Station 20002 and concave for Station 24013 suggesting that the data follows GEV type II and type III distributions respectively. Visually identifying specific distributions for observed AM series is subjective and therefore not statistically robust. Furthermore, observed data at the upper end of a sample is derived from events of low frequency with a resulting large sampling variance (NERC, 1975). Given that no allowance is made for the fact that members of the ordered sample (AM series) have different sampling variation, an incorrect distribution could be assigned to an observed data series. The method however, provides an initial estimate of the distribution of an AM series at a given location.

4.2.2 Moment and L -moment diagrams

Estimated skewness and kurtosis as well as L -skewness and L -kurtosis for the 172 stations analysed, together with the 172 simulated samples from a GEV type I distribution, are shown in Fig. 3. The theoretical fixed values of skewness and kurtosis (1.1395 and 5.4 respectively) and L -skewness and L -kurtosis (0.1699 and 0.1504) are also shown. The proximity of observed data to both the theoretical GEV type I value and the simulated type I clusters in Fig. 3 indicates that data from the majority of stations comes from a GEV type I population. However, as shown (particularly for the moment ratio diagram in Fig. 3a where data is densely clustered), appropriate distribution identification is not always clear. Wiltshire (1986) examined the statistical power of this test by Monte Carlo methods using GEV type I parent distributions and found that the power of the test increased with increasing record length (n) and an increasing number of sites.

4.2.3 Goodness of fit statistical tests

Results from the Hosking algorithm show that of the 143 stations analysed, data for 95 was shown to be best represented by type I distributions and that a further 9 and 39 stations followed type II and type III distributions respectively. The A-D

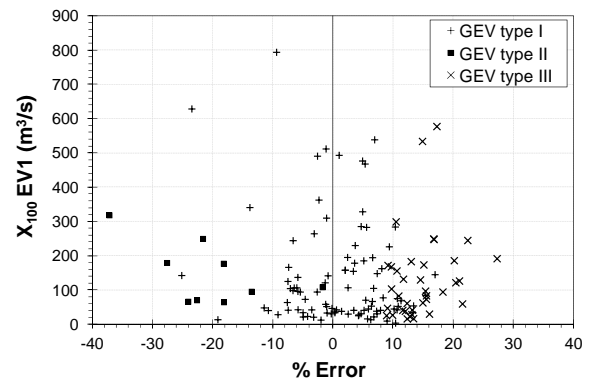


Fig. 4. Potential errors in 100-yr flood quantiles estimated at stations for GEV type I distributions when GEV distributions would be more suitable.

test showed that for the same stations, 83 (58%), 16 (11%) and 34 (24%) stations followed type I, type II and type III distributions respectively, indicating that the flood frequency distributions at 10 stations could not be described by either GEV type I or GEV distributions. Results therefore highlight small differences in the distribution profile from the Hosking and modified A-D methods.

Given that GEV type I distributions are generally assumed for single site flood frequency analysis in Irish catchments, results facilitate an estimation of the errors in predicted flood quantiles should type I distributions be used in areas where GEV distributions are more appropriate. Figure 4 indicates that assuming a type I distribution at locations where a type II distribution is more suitable can produce underestimated 100-yr flood quantiles (X_{100}) of up to 37%. Correspondingly, the assumption of type I distributions at locations where GEV type III distributions are appropriate can produce overestimated 100-yr flood quantiles by up to 27%.

4.3 Assessing the spatial factors that influence distributions

In the context of the study, the small differences in the predicted flood frequency distributions across Ireland from the methods of Hosking and A-D are not significant. The results from both statistical tests support the same hypotheses and reveal that while GEV type I and type III distributions are reasonably well distributed throughout the country, a considerably lower level of spatial variability is observed for the type II distributions (Fig. 5a). In total, 7 of the 9 type II distributions predicted by the Hosking test appear as a single cluster in a region that is underlain with karst terrain (Fig. 5b) and that straddles the Shannon and Western river basins. The modified A-D method also identified these 7 stations as type II stations. Single type II distributions still exist along the east and south coasts and in the context of the analysed data, there is no clear underlying reason why this should be. This suggests that an additional influence not investigated in this study is important at these locations. Type III distributions are primarily observed in geographical areas of the Shannon, South-Eastern and Eastern river basins away from mountainous or elevated areas.

The significance of the number of GEV type II and type III distributions determined from the Hosking test and their spatial distribution was investigated using Monte Carlo simulation. Firstly, the hypothesis, H_0 : that the underlying distribution is GEV type I (and thus the GEV type II and type III distributions occurred by chance) was tested. A total of 100 000 randomised data sets, each of which contained 143 sets of values (one for each gauging station with a record length in excess of 25 yr) were generated from a GEV type I distribution. To remove the effect of the different measured sample sizes at each of the gauging stations, the number of values generated for each gauging station in each set was equal to the number of measured annual maximum values for that gauging station. The analyses showed that for a two-tailed test with a 95 % confidence limit, 4.3 % and 1.9 % of the tests, could by chance, be expected to be identified by GEV type II and type III distributions respectively. Therefore, the number of type II distributions reported in this study could have occurred by chance under H_0 but it is very unlikely that the number of type III results would have occurred by chance.

Following this, a separate Monte Carlo investigation studied the distinct clustered spatial distribution of the type II stations to determine how likely it was to get a result with 7 stations clustered together if their locations were random. The hypothesis is H_0 : that the spatial location of type II stations is random and again, 100 000 tests were undertaken. In each test, 7 gauges were randomly placed at locations in a 2-dimensional lattice with 140 nodes, corresponding closely to the number of gauging stations investigated. The percentage of simulations in which the random placement produced a cluster of all 7 stations in any configuration or location was

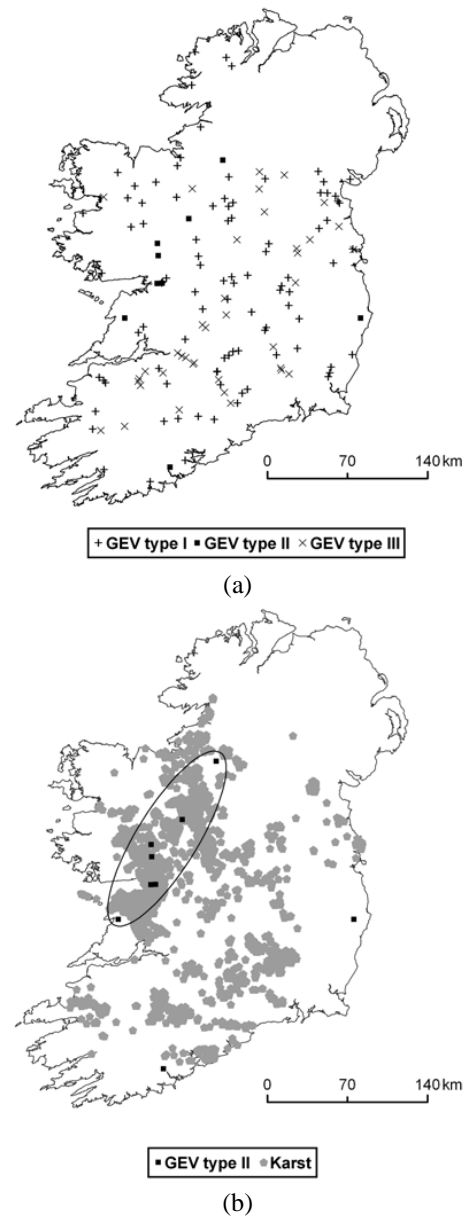


Fig. 5. Spatial variation of GEV distributions in Irish river catchments (a) and cluster of GEV type II distributions in area underlain by karst terrain in West of Ireland (b).

calculated as less than 0.1 %. H_0 is rejected at the 95 % confidence level and the spatial clustering of 7 stations is extremely unlikely to have occurred by chance. So although the number of type II stations could occur by chance, their spatial pattern is significant. In contrast, the number of type III distributions is, by itself, significant, regardless of their spatial distribution. In both tests, the results do not change appreciably if the number of simulations is increased and therefore, 100 000 simulations produced stable results.

GEV type III distributions are representative of strong attenuation influences and for many Irish catchments, may be

expected to result from the presence of lakes (described by Acreman and Sinclair (1986) for flood frequency distributions in Scotland) and to a lesser extent, bogs and the associated topographical depressions that can provide storage to flood flows. However, through GIS analyses and two-sample t-tests, GEV type III distributions were shown not to be related to the catchment property that describes flood attenuation from lakes and reservoirs (FARL). Furthermore, the type III stations were not in areas of the country where bog storage is significant (blanket bogs are most common in the west of Ireland where rainfall is greatest and raised bogs feature in the Shannon River basin). Therefore, it is probable that influences reflected in these distributions result from attenuation from natural floodplains, an effect promoted by the mild gradients in Irish river channels.

Two-sample t-tests showed that with reference to GEV type I distributions, type III stations were statistically correlated to a number of properties that are indicative of floodplain activity. These properties included the channel slope (defined by S1085, the slope determined between the 10 and 85 percentiles of the mainstream length), the proportion of the floodplain alluvial extent (described by ALLUV, based on the distribution of a single Parent Material class "Alluvium" by reference to a national dataset of soil Parent Materials) and the proportion of grassland pasture in the catchment that for Irish catchments, typically includes floodplain areas (represented by PASTURE and determined from reference to the Environmental Protection Agency Corine landcover dataset). Confidence intervals of 85 %, 90 % and 95 % were determined for S1085, ALLUV and PASTURE respectively. To further support the hypothesis that floodplain attenuation effects promote GEV type III distributions, the proportion of peat cover (PEAT, also determined from the Corine landcover dataset) in the relationship between type I and type III distributions was explored. Peat is naturally hydrophobic and peat areas are characterised by shallow water tables (Katiomon and Wahab, 2003). For Irish climatic conditions, peat tends to be highly saturated, limiting the storage capacity for rainfall and producing catchment conditions not conducive to type III distributions. This influence was supported by a two-sample t-test that showed PEAT to be significant in the occurrence of GEV type I distributions over type III distributions at a 95 % confidence interval.

Comparison of mean and standard deviation of these four catchment properties are shown in Fig. 6 for the type I and type III distributions. The lower average gradients of type III catchments is reflected in mean and standard deviation for S1085 of 2.69 and 1.97 respectively compared to values of 3.77 and 4.41 for type I catchments. Larger ALLUV (mean and standard deviation of 4.25 and 1.91 respectively for type III stations and 3.6 and 1.92 for type I stations) and PASTURE (mean and standard deviation of 81.02 and 17.52 for type III stations and 71.77 and 22.32 for type I stations) are also observed in type III catchments. Furthermore, higher mean and standard deviation for PEAT (13.72 and

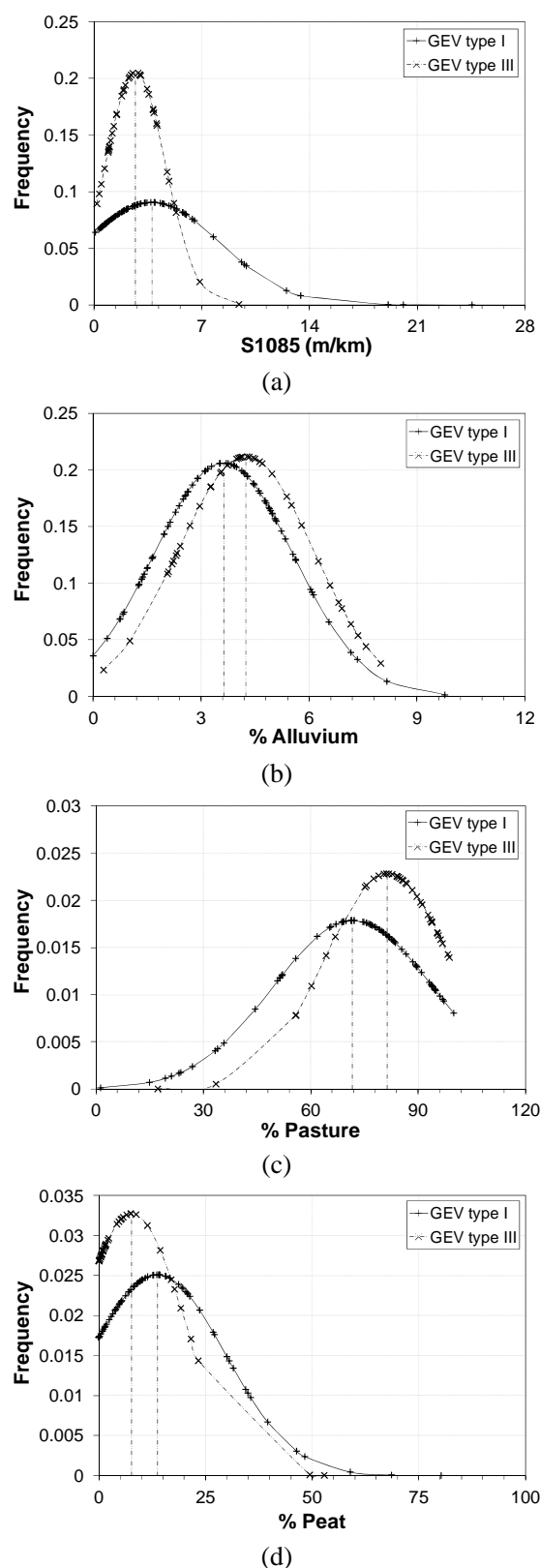


Fig. 6. Variations of catchment properties indicative of floodplain activity for differentiating between GEV type I and type III distributions in Irish river catchments.

15.89 respectively) in type I catchments compared to values in type III catchments (7.87 and 12.28 respectively) reflect the hydrophobic nature of this material, particularly in Irish catchments where it is characterised by high saturation levels.

5 Discussion of results

Results indicate that a significant cluster of GEV type II distributions is located in the West of Ireland in areas underlain with karst terrain. The prevailing meteorological conditions in this region are characterised by periods of intensive and prolonged rainfall. Such conditions are conducive to high overland flow rates (rather than just the recharge of subsurface and groundwater flows that would occur for less significant rainfall) that can exceed karst percolation rates with the consequence that overland flow dominates. This can be compounded by the filling of karst voids by rising groundwater with the consequence that subsurface storage can be removed. Furthermore, the karst in this region, as opposed to elsewhere in the country, is characterised by thin glacial overburdens with regular exposures of bare rock outcrops. These features promote the formation of karst springs where water can be withdrawn from the surface flow only to re-emerge through groundwater conduits and contribute to surface streams at later stages of a flood episode (White, 2002). These springs however, have limits that are independent of catchment conditions, rainfall depths and intensities and rises in groundwater levels (Bonacci, 2001). The influence of karst features on small, medium and large floods is therefore very different. A reasonable AM flow record is likely to contain a range of low to high flows. Therefore, it is likely that low to moderate floods may be represented by a given GEV distribution but the more extreme events represented in typical AM data series, given the increased overland flow together with groundwater and subsurface contributions, may more suitably be described by a flood frequency distribution that curves upwards. Such distributions are typical of GEV type II distributions and karst influences may therefore explain the spine of Type II distributions observed in the north-south direction in Fig. 5b.

The variable and complex hydrological mechanisms that characterise karst terrains are significant influences in these regions. The results presented support the assertions of Benzedden et al. (1993) and Bonacci (2001) that the complexities of karst hydrology are such that the fitting of flood frequency distributions to maximum or extreme annual discharges and relating these to flood recurrence intervals is more challenging.

GEV type III distributions are shown to be correlated to catchment properties that are indicative of floodplain inundation. Channel slope (S1085) and the extent of alluvium deposits (ALLUV) are significant in this regard. Reduced attenuation of flood peaks is expected in steeply graded catch-

ments where high conveyance capacities are generally associated with a reduction in storage volume in the river reach. Increased attenuations, consistent with the results presented and associated with type III stations, are therefore likely in low gradient catchments. In this study, the lateral extent of an active floodplain in river flows is reflected in the area over which alluvium material deposits on floodplains. For a discharge in a given river, the width of the active floodplain determines whether floodwater flows slowly as a thin layer spread over a wide valley or whether it will rise within the confines of a narrow valley to depths at which even over-bank water is rapidly flowing. The floodwater gets more attenuated in wider floodplains than in narrow valleys. Given the relationship between type III distributions and increasing storage, the statistical significance of ALLUV in the context of whether a station is type I or type III is important. The finding that floodplain attenuation can promote GEV type III distributions in river catchments is supported by other research (Mason et al., 1988; Mason, 1992; Archer, 1989; Wolff and Burges, 1994; McCartney and Naden, 1995).

6 Conclusions

Quoting Gumbel (1891–1966), where he stated that “*It seems that the rivers know the theory. It only remains to convince the engineers of the validity of this analysis*” is particularly apt for the analysis presented. This analysis involved identifying the GEV flood frequency distributions for annual maximum (AM) data sets in Irish catchments. The statistical tests of Hosking et al. (1985) and a modified Anderson-Darling (A-D) method (Laio, 2004) were used and results were also supported by probability plots and moment and *L*-moment diagrams. Although data from 172 gauging stations in 126 rivers was analysed in the study, the goodness of fit statistical tests were applied only to the 143 stations where AM flow records exceeded 25 yr. Results of the Hosking method indicated that of these 143 stations, data for 95 (67 %) was best represented by GEV type I distributions and data for another 9 (6 %) and 39 (27 %) stations followed type II and type III distributions respectively. Type I, type II and type III distributions were determined for 83 (58 %), 16 (11 %) and 34 (24 %) stations using the modified A-D method (AM data from 10 stations followed neither type I or GEV distributions).

GEV type II distributions were primarily observed in a statistically significant cluster in the west of the country in a region underlain by pure carboniferous limestone with extensive karst features together with relatively thin quaternary deposits that overlie the bedrock. Persistent rainfall in the region results in high annual rainfall totals compared to elsewhere in the country and thus, conditions are conducive to the generation of high volume flood hydrographs. For karst floods the volume of the hydrograph is more important than in cases of non-karst floods. For low to moderate floods,

a significant proportion of flow can penetrate into the karst underground and fill voids and fissures, with the effect that overland flow is quite low. For larger volume floods, the relative capacity of the voids and fissures is not sufficient. Groundwater levels can therefore rise rapidly, pressurising karst conduits and producing groundwater springs that break through on the surface in unexpected locations, producing more significant overland flows. Overland flows can be further increased in situations where the rainfall intensity exceeds karst percolation rates. Therefore, although intuitively, the additional subsurface storage provided in karst terrain may be expected to provide conditions consistent with GEV type III distributions, the type II distributions in this area reflect the finite nature of this storage and the effects, in extreme conditions, when the karst is saturated and further storage is no longer available.

The majority of GEV type III distributions appear in geographical areas of the Shannon, South-Eastern and Eastern river basins where attenuation influences attributable to floodplains appear to be influential. For moderate floods with relatively high peak to volume ratios, floodplain attenuation effects can be more significant. The indicators of floodplain activity that potentially attenuate a flood wave as it passes along a valley were represented in the study by catchment properties that included channel slope, the extent of alluvium deposits in the river basin together with peat and pasture coverage in the catchment. Two-sample t-tests showed these catchment properties to be significant in distinguishing between type I and type III distributions. The presence of GEV type III stations in areas where floodplain activity is likely, suggests that when gauging stations are separated by wide shallow floodplains without significant intervening tributary inflows, there is an increased tendency for flatter GEV type III flood frequency distributions at downstream gauging stations. Results also indicate that in some instances, assuming that Irish annual maximum data follows GEV type I distributions (as recommended for Irish AM data) is incorrect and may result in erroneous estimates of flood quantiles at these stations. Where actual data follows a type II distribution, flood quantiles may be underestimated by in excess of 35 % and for type III distributions, overestimates by in excess of 25 % can occur.

Acknowledgements. The authors wish to acknowledge the financial support provided by the Irish Office of Public Works (OPW) and the Centre for Water Resources Research (CWRR) in the School of Civil, Structural and Environmental Engineering in UCD for undertaking this research. The OPW funding was provided through the Irish Flood Studies Update (FSU) programme.

Edited by: F. Laio

References

- Acreman, M. C. and Sinclair, C. D.: Classification of drainage basin according to their physical characteristics; an application for flood frequency analysis in Scotland, *J. Hydrol.*, 84, 365–380, 1986.
- Ahmad, M. I., Sinclair, C. D., and Spurr, B. D.: Assessment of Flood Frequency Models Using Empirical Distribution Function Statistics, *Water Resour. Res.*, 24, 1323–1328, 1988.
- Archer, D.: Flood wave attenuation due to channel and floodplain storage and effects on flood frequency, in: *Floods: Hydrological, Sedimentological and Geomorphological Implications*, edited by: Beven, K. and Carling, P. A., John Wiley and Sons, Chichester, 37–46, 1989.
- Archer, D. R.: A catchment approach to flood estimation, *Proc. Instn Wat. Engrs Scient.*, 35, 275–289, 1980.
- Bailly-Comte, V., Jourde, H., Roesch, A., Pistre, S., and Batiot-Guilhe, C.: Time series analyses for Karst/River interactions assessment: Case of the Coulazou River (Southern France), *J. Hydrol.*, 349, 98–114, 2008.
- Benson, M. A.: Uniform flood frequency estimation methods for federal agencies, *Water Resour. Res.*, 4, 891–908, 1968.
- Benzedden, E., Olcay, M.S. and Bagali, K.: Flood frequency analysis in karst river basins, *Hydrological Processes in Karst Terranes, Proceedings of the Antalya Symposium and Field Seminar, October 1990, IAHS Publ.*, 207, 187–202, 1993.
- Bhowmik, N. G.: Hydraulic geometry of floodplains, in: *Global Water: Science and Engineering – The Ven Te Chow Memorial Volume*, edited by: Stout, G. E. and Davis, G. H., *J. Hydrol.*, 68, 369–401, 1984.
- Bobee, B., Cavadias, G., Ashkar, F., Bernier, J., and Rasmussen, P.: Towards a systematic approach to comparing distributions used in flood frequency analysis, *J. Hydrol.*, 142, 121–136, 1992.
- Bonacci, O.: Analysis of the maximum discharge of karst springs, *Hydrogeol. J.*, 9, 328–338, 2001.
- Bonacci, O. and Zivaljevic, R.: Hydrological explanation of the flow in karst: example of the Crnojevica Spring, *J. Hydrol.*, 146, 405–419, 1992.
- Bonacci, O.: Hazards caused by natural and anthropogenic changes of catchment area in karst, *Nat. Hazards Earth Syst. Sci.*, 4, 655–661, doi:10.5194/nhess-4-655-2004, 2004.
- Bonacci, O., Ljubenkovic, I., and Roje-Bonacci, T.: Karst flash floods: an example from the Dinaric karst (Croatia), *Nat. Hazards Earth Syst. Sci.*, 6, 195–203, doi:10.5194/nhess-6-195-2006, 2006.
- Castro, J. M. and Jackson, P. L.: Bankfull discharge recurrence intervals and regional hydraulic geometry relationships patterns in the Pacific Northwest, USA, *J. Am. Water Resour. Assoc.*, 37, 1249–1262, 2001.
- Coxon, C. E.: The spatial distribution of turloughs, *Irish Geogr.*, 20, 11–23, 1987.
- Coxon, C. E. and Drew, D.: Interdependence of groundwater and surface water in lowland karst areas of western Ireland: management issues arising from water and contaminant transfers, *Geological Society, London, Special publications*, 182, 81–88, 2000.
- Cunnane, C.: Factors affecting choice of distribution for flood series, *Hydrolog. Sci. J.*, 30, 25–36, 1985.
- Cunnane, C.: Statistical distributions for flood frequency analysis, *World Meteorological Organization, Operational hydrology Report No. 33*, 73 pp., 1989.
- Cunnane, C., Das, S., and Mandal, U.: Final report of Work-Package 2.2 “Frequency analysis” of the Irish Flood Studies Update Programme, A report submitted to Irish Office of Public

- Works, 2008.
- Denic-Jukic, V. and Jukic, D.: Composite transfer functions for karst aquifers, *J. Hydrol.*, 274, 80–94, 2002.
- Diehl, T. H.: Hydrological and statistical characteristics of extreme floods, Ph.D. dissertation, Univ. of Wisc., Madison, 1990.
- Drew, D. P.: Hydrogeology of the North Co. Galway – South Co. Mayo lowland karst area, Western Ireland, *Proc. 6 Int. Spel. Cong., Olomouc*, 1973, 4, 57–61, 1976.
- Drew, D. P.: The effects of human activity on a lowland karst aquifer, in: *Problems in karst hydrology*, edited by: Burger, A., Int. Assoc. Hydrogeologists, 2, 1980.
- Drew, D. P.: The Hydrology of the Burren, County Clare, *Irish Geogr.*, 23, 69–89, 1990.
- Drew, D. P.: Hydrogeology of lowland karst in Ireland, *Q. J. Eng. Geol. Hydrogeol.*, 41, 61–72, 2008.
- Drew, D. P. and Coxon, C. E.: Karst hydrogeology and karst environment protection, IAH 21st Congress, 10–15 October, Guilin, China, 204–209, 1988.
- El Adlouni, S., Bobee, B., and Ouarda, T. B. M. J.: On the tails of extreme event distributions in hydrology, *J. Hydrol.*, 355, 16–33, 2008.
- Haider, S.: Effects of floodplain inundation on flood frequency, *Trans. Am. Geophys. Union*, 73, 242–243, 1992.
- Hollis, G. E.: The effect of urbanization on floods of different recurrence interval, *Water Resour. Res.*, 11, 431–435, 1975.
- Hosking, J. R. M.: L-moments: analysis and estimation of distributions using linear combinations of order statistics, *J. R. Stat. Soc. B*, 52, 105–124, 1990.
- Hosking, J. R. M. and Wallis, J. R.: *Regional frequency analysis: an approach based on L-moments*, Cambridge, UK, Cambridge University Press, 1997.
- Hosking, J. R. M., Wallis, J. R., and Wood, E. F.: Estimation of the generalized extreme value distribution by the method of Probability-Weighted Moments, *Technometrics*, 27, 251–260, 1985.
- Jenkinson, A. F.: Statistics of extremes in estimation of Maximum Floods, WMO Tech. Note 98, 183–228, 1969.
- Jones, G. L. and Gunn, J.: Flood Alleviation in the Lowland Karst Area of Mullinahone, County Tipperary, Ireland, *J. Earth Sci. R. Dubl. Soc.*, 5, 37–42, 1982.
- Katimon, A. and Wahab, A. K. A.: Hydrological analysis of drained peat basin using time series correlation and cross correlation functions, *Jurnal Teknologi*, 39, 63–74, 2003.
- Kirby, W.: Algebraic boundedness of sample statistics, *Water Resour. Res.*, 10, 220–222, 1974.
- Laio, F.: Cramer-von Mises and Anderson-Darling goodness of fit tests for extreme value distributions with unknown parameters, *Water Resour. Res.*, 40, 1–10, 2004.
- Lewin, J. and Hughes, D.: Welsh floodplain studies, II, Application of a qualitative inundation model, *J. Hydrol.*, 46, 35–49, 1980.
- Lewin, J. and Manton, M. M. M.: Welsh floodplain studies: the nature of floodplain geometry, *J. Hydrol.*, 25, 37–50, 1975.
- Mason, D. W.: Modelling the effect of Floodplain storage on the flood frequency curve, Ph.D. thesis, University of Newcastle Upon Tyne, 1992.
- Mason, D. W., O'Connell, P. E., and Mawdsley, J. A.: The effect of floodplain storage on the flood frequency curve, Paper presented at International Association of Hydraulics Research, Int. Symp. on Stochastic Hydraulics, Birmingham, 1988.
- McCartney, M. P. and Naden, P. S.: A Semi-Empirical investigation of the influence of flood-Plain Storage on Flood Flow, *J. Inst. Water Environ. Manage.*, 9, 236–246, 1995.
- McKerchar, A. I. and Pearson, C. P.: Maps of flood statistics for regional flood frequency analysis in New Zealand, *Hydrolog. Sci.*, 35, 609–621, 1990.
- McMahon, T. A. and Srikanthan, R.: Log Pearson III distribution – is it applicable to flood frequency analysis of Australian streams?, *J. Hydrol.*, 52, 139–147, 1981.
- NERC – Natural Environment Research Council: *Flood Studies Report, Vol. I, Hydrological Studies*, London, 1975.
- Otten, A. and Van Montfort, M. A. J.: The power of two tests on the type of distribution of extremes, *J. Hydrol.*, 37, 195–199, 1978.
- Petit, F. and Pauquet, A.: Bankfull discharge recurrence interval in gravel-bed rivers, *Earth Surf. Proc. Land.*, 22, 685–693, 1997.
- Phien, H. N.: A review of methods of parameter estimation for the extreme value type-I distribution, *J. Hydrol.*, 90, 251–268, 1987.
- Reed, D. and Martin, J.: Flood Studies Update: A new look at flood estimation for Ireland, *Proc. of UNESCO International Hydrological Programme, OPW (Ireland), National Hydrology Seminar*, 26–33, 2005.
- Richards, K.: *Rivers, Form and Process in Alluvial Channels*, Methuen, 358 pp., 1982.
- Sellin, R. H. J.: A laboratory investigation into the interaction between the flow in the channel of a river and that over its floodplain, *La Houille Blanche*, November, vol. 19, 793–801, 1964.
- Subramanya, K.: *Engineering Hydrology*, McGraw-Hill Publishing, New Delhi, 1984.
- Van Gelder, P. H. A. J. M.: Performance of parameter estimation techniques with inhomogeneous datasets of extreme water levels along the Dutch coast, *Proceedings of the XXVIII IAHR congress, Graz, Austria, CD-ROM, Abstract 174*, 1–9, 1999.
- Van Montfort, M. A. J.: On testing that the distribution of extremes is of type I when type II is the alternative, *J. Hydrol.*, 11, 421–427, 1970.
- Vogel, R. M. and Fennessey, N. M.: L moment diagrams should replace product moment diagrams, *Water Resour. Res.*, 29, 1745–1752, 1993.
- White, W. B.: Karst hydrology: recent developments and open questions, *Eng. Geol.*, 65, 85–105, 2002.
- Williams, P. W.: Limestone morphology in Ireland, in: *Irish Geographical Studies*, edited by: Glasscock, R. and Stephens, N., Queen's University, Belfast, 105–124, 1970.
- Wiltshire, S. W.: Regional flood frequency analysis I: Homogeneity statistics, *Hydrolog. Sci. J.*, 31, 321–333, 1986.
- Wolff, C. G. and Burges, S. J.: An analysis of the influence of river channel properties on flood frequency, *J. Hydrol.*, 153, 317–337, 1994.
- Woltemade, C. J. and Potter, K. W.: A watershed modelling analysis of fluvial geomorphologic influences on flood peak attenuation, *Water Resour. Res.*, 30, 1933–1942, 1994.
- Zheleznyakov, G. V.: Relative deficit of mean velocity of instable river flow, kinematic effect in river beds with flood plains, *Proceedings of the 11th International congress of the Association for hydraulic research, Leningrad, USSR*, 1965.
- Zhou, W.: Drainage and flooding in karst terrains, *Environ. Geol.*, 51, 963–973, 2007.