

This is a repository copy of *A novel Streptomyces spp. integration vector derived from the S. venezuelae phage, SV1.*

White Rose Research Online URL for this paper:

<https://eprints.whiterose.ac.uk/81670/>

Version: Published Version

Article:

Fayed, Bahgat, Younger, Ellen, Taylor, Gabrielle et al. (1 more author) (2014) A novel Streptomyces spp. integration vector derived from the S. venezuelae phage, SV1. BMC Biotechnology. 51. ISSN 1472-6750

<https://doi.org/10.1186/1472-6750-14-51>

Reuse

Items deposited in White Rose Research Online are protected by copyright, with all rights reserved unless indicated otherwise. They may be downloaded and/or printed for private study, or other acts as permitted by national copyright laws. The publisher or other rights holders may allow further reproduction and re-use of the full text version. This is indicated by the licence information on the White Rose Research Online record for the item.

Takedown

If you consider content in White Rose Research Online to be in breach of UK law, please notify us by emailing eprints@whiterose.ac.uk including the URL of the record and the reason for the withdrawal request.

RESEARCH ARTICLE

Open Access

A novel *Streptomyces* spp. integration vector derived from the *S. venezuelae* phage, SV1

Bahgat Fayed¹, Ellen Younger², Gabrielle Taylor¹ and Margaret C M Smith^{1*}

Abstract

Background: Integrating vectors based on the *int/attP* loci of temperate phages are convenient and used widely, particularly for cloning genes in *Streptomyces* spp.

Results: We have constructed and tested a novel integrating vector based on *g27*, encoding integrase, and *attP* site from the phage, SV1. This plasmid, pBF3 integrates efficiently in *S. coelicolor* and *S. lividans* but surprisingly fails to generate stable integrants in *S. venezuelae*, the natural host for phage SV1.

Conclusion: pBF3 promises to be a useful addition to the range of integrating vectors currently available for *Streptomyces* molecular genetics.

Keywords: *Streptomyces*, Cloning, Integration vector, Serine integrase, Bacteriophage, SV1

Background

Bacteria in the genus *Streptomyces* are a prolific source of natural products, many of which are used in the clinic as antibiotic, anticancer, immune-modulatory or other therapeutic agents. Furthermore these soil bacteria have an unusual life style; vegetative growth is mycelial and when nutrients become scarce a sporulation cycle initiates [1]. The phages that infect these bacteria have been exploited in the development of vectors for genetic engineering of *Streptomyces* and closely related genera, in particular in the study of natural product pathways [2].

The development of integrating vectors that integrate via site-specific recombination between a site on the plasmid vector, the *attP* site and a site in the bacterial chromosome, the *attB* site have been widely adopted by researchers wishing to genetically manipulate *Streptomyces* genes [3]. The *int/attP* site from the integrating plasmid, pSAM2, was first exploited in a novel vector that could integrate into the endogenous *attB* site in the *Streptomyces* genome [4]. The advantage of the integration vectors over freely replicating plasmid vectors are the very low copy number (usually single or two copies integrated in tandem), the ease of construction of plasmids, which can be done in *E. coli*, and the simple method of plasmid transfer into *Streptomyces* via conjugation [5].

The idea of using phage integrases by the research group at Eli Lilly, led to the development of integrating vectors encoding the *int/attP* locus from the *Streptomyces* phage ϕ C31 [6-8]. The recombination event that leads to phage integration is a conservative reciprocal DNA cleavage and rejoining mechanism occurring at the centre of the *attP* and *attB* sites producing the integrated plasmid flanked by hybrid *attP/B* sites called *attL* and *attR* [7]. Phage integrases are known to be highly directional, with tight control over integration versus excision. Integration (or *attB x attP*) is the default reaction for phage integrases whilst excision (*attL x attR*) requires activation by a recombination directionality factor (RDF) or Xis [9,10]. Consequently the integration vectors based on the ϕ C31 *int/attP* system and lacking any other phage genes are 100% stable in most *Streptomyces* species. The ϕ C31 integrating vectors integrated with higher efficiency and were more stable than the pSAM2-derived integration vectors and are now widely adopted by researchers in *Streptomyces* genetics. The use of the ϕ C31 integration system is also being widely adopted for genome engineering in eukaryotes, in particular in tissue culture and model organisms such as the mouse and *Drosophila* [11].

In 2003 the *int/attP* locus from the phage ϕ BT1 was used to generate an alternative suite of phage-derived integration vectors for *Streptomyces* [12]. These vectors were demonstrated to be completely orthogonal to the ϕ C31 derived plasmids and plasmids derived from the

* Correspondence: maggie.smith@york.ac.uk

¹Department of Biology, University of York, York YO10 5DD, UK
Full list of author information is available at the end of the article

two phage *int/attP* loci could be used in combination without loss of integrating efficiency. The ϕ BT1 *int/attP* integration vectors are also widely used in the *Streptomyces* community. Recently vectors based on phage TG1 have been developed for use in *Streptomyces avermitilis* [13].

Here we present a new integrating vector derived from *S. venezuelae* phage SV1 [14,15]. We demonstrate the efficient integration of the plasmid into several *Streptomyces* spp. although, surprisingly, we failed to obtain stable integrants in *S. venezuelae*.

Results and discussion

The genome of phage SV1 was sequenced previously and, consistent with the temperate nature of the phage, *g27* encodes an integrase [15]. Gp27 is a serine integrase, whose closest homologue in the database is from *Streptomyces prunicolor* (WP_019054986.1; 54% identity). SV1 is only distantly related (between 11 and 13% identical) to ϕ C31, TG1 and ϕ BT1 integrases so the SV1 integration system encoded by SV1 *g27/attP* is therefore very likely to be another orthologous system to ϕ C31 and ϕ BT1 integration systems.

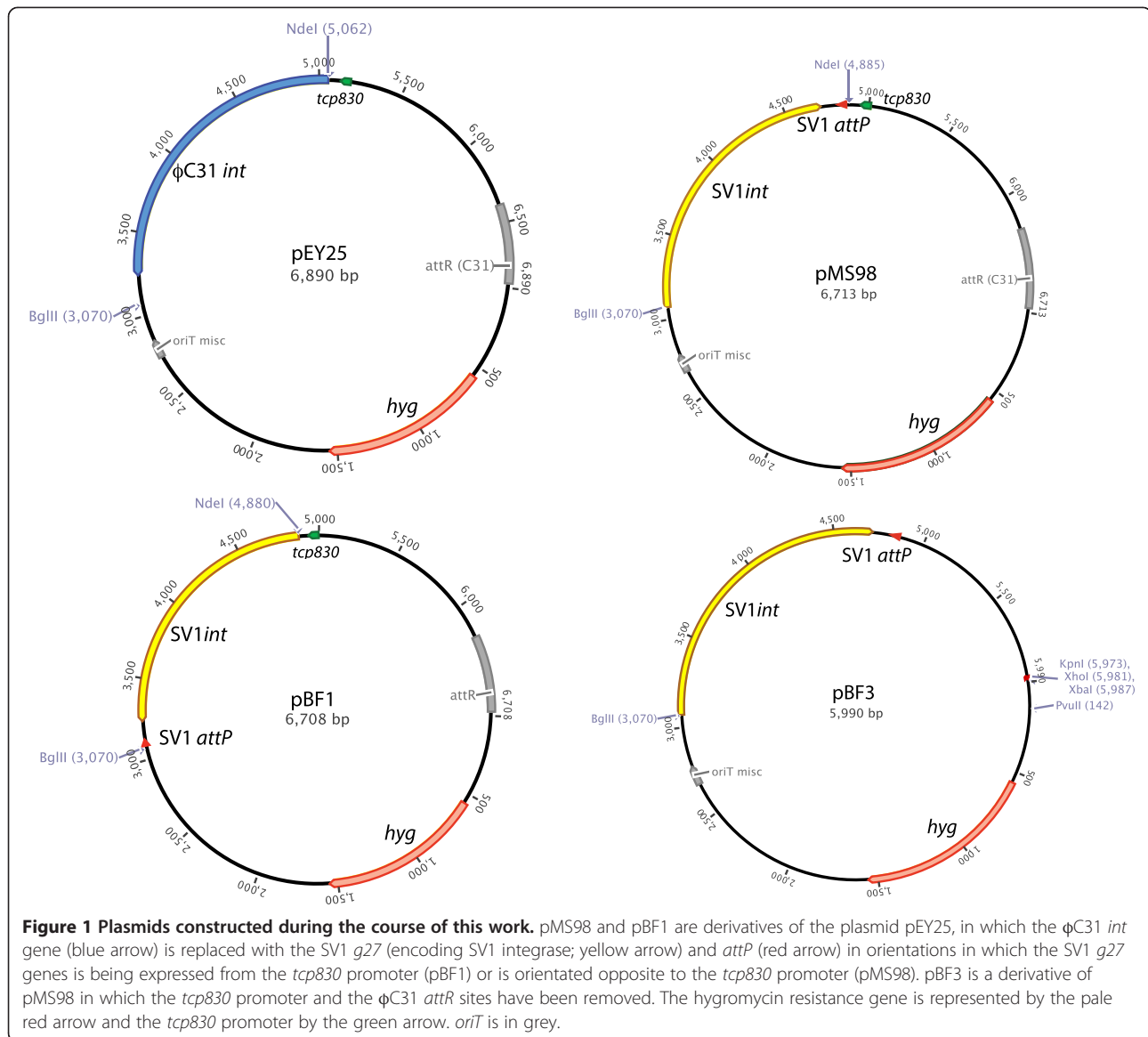
The DNA upstream and downstream of SV1 *g27* was studied for a likely *attP* site. Precedent dictates that *attP* is normally upstream or downstream of the integrase gene but in some mobile genetic elements, such as *SCCmec*, can be located quite distal from their cognate integrase genes [11,16]. In SV1 the *attP* site is unlikely to be upstream of *g27* as the upstream gene, *g28*, overlaps with *g27* by the sequence 5'ATGA, which couples the start codon (ATG) of *g27* with the stop codon of *g28* (TGA). Downstream of *g27* is a non-coding region of 342 bp before the start of the downstream gene, *g26*. The *attP* sites for the serine integrases commonly comprise a perfect inverted repeat flanking a spacer of at least 20 bp [11]. Within the *g26-g27* intergenic region in SV1 there are two perfect inverted repeats (IRs); the IR distal to *g27* has a spacer of 5 bp and the IR proximal to *g27* has a 22 bp spacer. Moreover the IR proximal to *g27* has a 10 bp perfect inverted repeat so, together with the spacer DNA, the length of this DNA element is 42 bp which is the same length as the ϕ C31 *attP* site. The length *attP* sites used by other serine integrases is between 42 and 69 bp [11,17]. The *attP* site in SV1 is therefore likely to be located between nucleotides 20504 and 20545 and is downstream of the integrase gene, *g27*.

As the SV1 *g27* is likely to be expressed as part of an operon, we decided to test its integrating properties by swapping the ϕ C31 *int* ORF expressed from the *tcp830* promoter in pEY25 for the SV1 *g27/attP* locus (Figure 1). Primers were designed to clone the SV1 *g27/attP* locus 20487 to 22295 comprising the putative *attP* site and the *g27* ORF in both orientations downstream of the *tcp830* promoter in pEY25, to generate pMS98 and

pBF1 (Figure 1). Both plasmids were introduced into *E. coli* ET12567 (pUZ8002) and used in conjugation reactions with *S. coelicolor* J1929. Surprisingly the numbers of exconjugants were not significantly different for pBF1 (in which the SV1 *g27* is co-directional with the *tcp830* promoter) and pMS98 (in which the SV1 *g27* is oriented towards *tcp830*) and this occurred with or without addition of anhydrotetracycline (Table 1). In fact exconjugants containing pBF1 tended to overproduce the two pigments actinorhodin and undecylprodigiosin indicating a possible stress response, perhaps due to overexpression of SV1 integrase. We assume that there are fortuitous sequences upstream of the *g27* gene in pMS98 that resemble both promoter and ribosome binding sites for integrase expression after conjugation to *Streptomyces*. The low frequency of exconjugants from *E. coli* containing pEY25 in this experiment is likely to be due to the absence of the ϕ C31 *attP* site (Figure 1).

To validate the integration of the plasmids via SV1 *g27/attP* site into the *S. coelicolor* genome, we have identified the integration site of SV1 phage using an inverse PCR technique. Genomic DNA from an exconjugant of *S. coelicolor* J1929 containing the integrated pMS98 was cut with a restriction enzyme for which there is no recognition site within pMS98 and self-ligated. Primers reading outwards from the SV1 plasmid into the *S. coelicolor* J1929 genome were then used to generate a PCR product (Figure 2). The plasmid pMS98 was found to have integrated into SCO4383 encoding a putative 4-Coumarate-CoA Ligase, a key enzyme in the phenylpropanoid pathway that, at least in plants, is important in secondary metabolism pathways for flavonoids and monolignols [18]. Based on the DNA sequence of this PCR product, we constructed two further primers against the integration region (SCO4383) to amplify *attB*, *attR*, and *attL* (using *S. coelicolor* DNA, and *S. coelicolor* J1929:pMS98 genomic DNA as templates) (Figure 3). The resulting DNA sequences confirmed that the SV1 *attB* site is within SCO4383 and the *attP* site is located, as predicted, downstream of the SV1 *g27* gene (Figure 4). The *attP* and the *attB* have similar features to those observed in the other serine integrase attachment sites; they both contain inverted repeats but these are different in the *attB* and *attP* sequences, and there is an identical sequence of 4 bp in the centre of both substrates where the recombination occurs (Figure 4) [11,12].

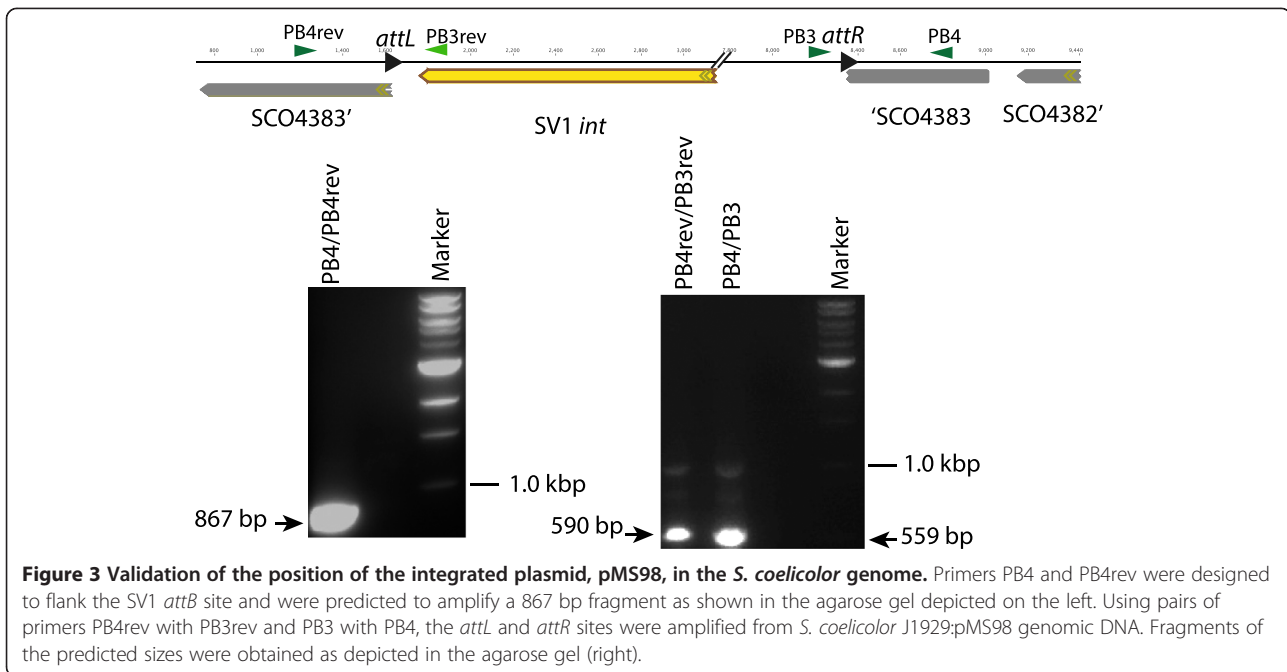
Plasmid pMS98 was modified to remove unnecessary DNA, the *attR* site from ϕ C31, and the *tcp830* promoter to generate pBF3 (Figure 1). This novel integration vector has unique XhoI, XbaI, KpnI and PvuII sites for cloning. To test whether pBF3 could integrate into a range of *Streptomyces* genomes it was introduced by conjugation into *S. coelicolor*, *S. lividans*, *S. venezuelae*, *S. avermitilis* and *S. albus*. Conjugation frequencies of



pBF3 into *S. coelicolor* and *S. lividans* were reminiscent of those obtained with ϕ BT1 and ϕ C31 integration plasmids; the numbers of hygromycin resistant exconjugants for *S. coelicolor* J1929, *S. coelicolor* M512, and *S. lividans* TK24 were greater than 1×10^5 (Table 2), and the integrations were stable after two rounds of sporulation without selection (see below). When *S. venezuelae* was used as the recipient, the hygromycin resistant exconjugants were, although numerous, very small and the integrations were not stable as after two rounds of sporulation, hygromycin resistance was lost. A BLAST search using the SV1 *attB* site from *S. coelicolor* revealed that highly similar sequences were indeed present in *S. lividans* and *S. avermilitis* but no homologous sequences were found in *S. albus* or *S. venezuelae*. Despite the presence of a putative *attB* site for SV1 in *S. avermilitis*

the frequency of conjugation and integration of pBF3 was very low (Table 2).

The sequences of the SV1 *attB* and *attP* sites are distinct from the recombination sites for the other known phage integrases. We showed previously that integrating vectors derived using integrases from ϕ C31 and ϕ BT1 do not interfere with each other with respect to the frequency of integration or their stability [12]. We therefore tested whether the integration frequencies of ϕ C31 or ϕ BT1 derived integrating vectors were affected if the recipient already contained pBF3 integrated at the SV1 *attB* site. Conjugations were performed using *E. coli* donors containing either pSET152 (encoding ϕ C31 *int/attP*) or pRT801 (encoding ϕ BT1 *int/attP*), both plasmids conferring apramycin resistance, and *S. coelicolor* M512 containing pBF3 as recipient. Selection was for both hygromycin



[21]) *Streptomyces coelicolor* M512 ($\Delta redD \Delta actII-ORF4$ SCP1⁻ SCP2⁻ Pgl⁺) [22], *Streptomyces avermitilis* MA-4680 [23], *Streptomyces venezuelae* 10712 [24], *Streptomyces albus* J1074 [25], *Streptomyces lividans* TK24 (*str-6* SLP2⁻, SLP3⁻) [26].

The *E. coli* strains DH5 α [27] and ET12567(pUZ8002) [20,26] were grown in Luria-Bertani broth (LB) or on LB agar at 37°C. *Streptomyces* strains were grown in Soya Mannitol (SM) agar at 30°C for routine maintenance [26]. Conjugations were performed on SM containing 10 mM MgCl₂ and Yeast extract malt extract medium was used

for the preparation of genomic DNA [26]. Antibiotic concentrations for *E. coli* were 150 μ g/ml hygromycin, 50 μ g/ml apramycin, 50 μ g/ml kanamycin, 25 μ g/ml chloramphenicol and 100 μ g/ml hygromycin, 50 μ g/ml apramycin and 25 μ g/ml nalidixic acid for selection with *Streptomyces*.

DNA manipulation

Plasmids preparations, *E. coli* transformations, DNA digestion by restriction enzymes, DNA fragment isolation and purification, and gel electrophoresis were carried

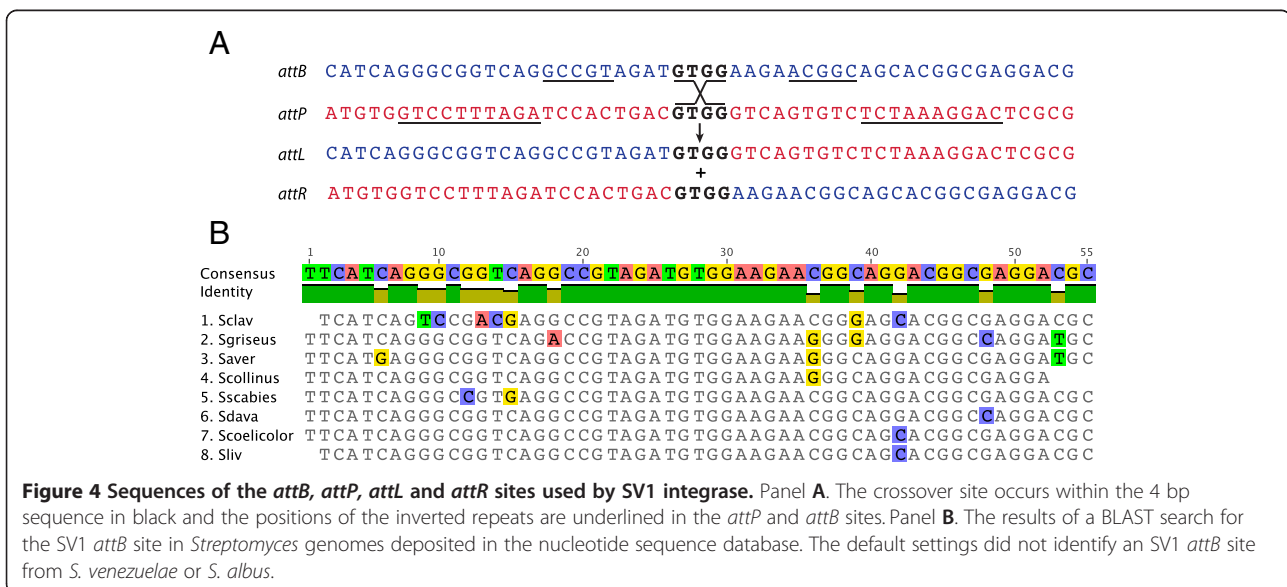


Table 2 Conjugation frequencies per 10⁸ spores of integrating plasmids into *Streptomyces* species

<i>Streptomyces</i> recipient:	<i>E. coli</i> donor, ET12567 (pUZ8002) containing plasmids:			
	pBF3 (SV1 <i>g27/attP</i>)	pMS82 (ϕBT1 <i>int/attP</i>)	pSET152 (ϕC31 <i>int/attP</i>)	pRT801 (ϕBT1 <i>int/attP</i>)
<i>S. coelicolor</i> J1929	2.5 × 10 ⁶	3.6 × 10 ⁶	6 × 10 ⁵	ND ¹
<i>S. coelicolor</i> M512	1.7 × 10 ⁷	6 × 10 ⁷	6 × 10 ⁶	ND
<i>S. lividans</i>	1.4 × 10 ⁵	9.5 × 10 ⁵	2.3 × 10 ⁵	ND
<i>S. venezuelae</i> 10712	3.3 × 10 ⁴	1.7 × 10 ⁷	9.8 × 10 ⁴	ND
<i>S. avermitilis</i>	40	3 × 10 ⁵	1.8 × 10 ³	ND
<i>S. albus</i> J1074	4.6 × 10 ²	5 × 10 ⁵	1 × 10 ³	ND
<i>S. coelicolor</i> M512: pBF3	-	-	4 × 10 ⁶	2.8 × 10 ⁵

¹Not Done.

out according to Sambrook *et al.* [27]. In-Fusion[®] cloning (Clontech[®]) was generally used for joining DNA fragments. DNA preparation from *Streptomyces* was performed following the *Streptomyces* manual [26].

Southern blotting was performed, according to the manufacturer's instructions, on Hybond-N nylon membrane (Amersham) using a fragment of DNA derived from the hygromycin resistant gene as the probe. The AlkPhos Direct Labeling and Detection System with CDP-Star kit (Amersham) was used for detection. 1 μg of *Nru*I (New England Biolabs) digested genomic DNA was loaded onto a 0.8% agarose gel in TBE buffer and electrophoreses overnight prior to capillary blotting.

Polymerase Chain Reaction (PCR) was carried out using Phusion[®] High-Fidelity DNA Polymerase (New England Biolabs) according to the manufacturer's instructions.

Plasmid constructions

pEY25 is a derivative of pAV11, an integration vector that encodes the ϕBT1 *int/attP* locus and the anhydrotetracycline inducible promoter, *tcp830*. To generate pEY25 the ϕBT1 *int* gene was deleted and the ϕC31 *int* gene was placed under the control of the *tcp830* promoter. pMS98 was constructed by PCR amplification of SV1 *g27/attP* locus using primers MS409 (5' GCTTCATATGAAA

CGAGACCTACCAAG) and MS410 (5'CGTTAGATCTTCGCGCTCCGATGTGGTC) and In-Fusion[®] cloning into pEY25 cut with *Nde*I and *Bgl*II to replace the ϕC31 *int* gene. pBF1 was constructed in the same way but using primers PBF1for (5' AAGGAGATATACATATGAAACGAGACCTACCAAGC- 3') and PBF1rev (5' CCATGAGCCAAGATCTTCGCGCTCCGATGTGGTCC- 3'). pBF3 was constructed as follows to remove unnecessary elements of pBF1: pBF1 was first cut with *Avr*II, and *Acc*65I, and the ends filled in with DNA Polymerase I, Large (Klenow) Fragment (New England Biolabs) to generate blunt ends for ligation. This blunt ended fragment was then self-ligated using Quick ligase enzyme (New England Biolabs) to produce pBF2. To remove the *tcp830* promoter, pBF2 was digested with *Nde*I, and *Ase*I and the 5985 bp fragment was self-ligated to form pBF3.

Inverse PCR

Inverse PCR was performed to identify the integration site of SV1 within *Streptomyces coelicolor* J1929. This procedure is designed for amplifying anonymous flanking genomic DNA regions. Genomic DNA was prepared from a strain containing the integrated plasmid, pMS98, digested with an enzyme that does not cut within the plasmid (*Stu*I) and then ligation of DNA under dilute

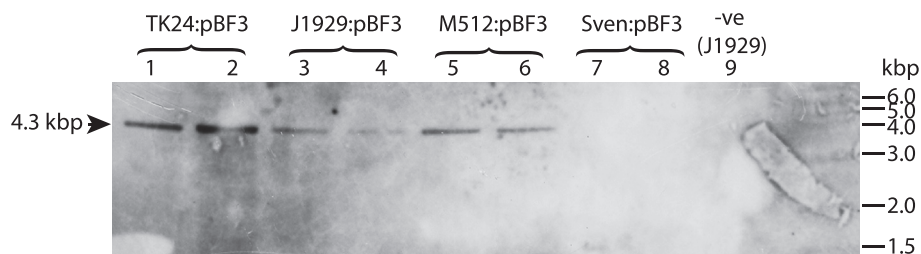


Figure 5 Southern blot to demonstrate the presence of the predicted hygromycin gene fragment in *S. coelicolor* and *S. lividans* exconjugants. Two independent exconjugants derived from an *E. coli* donor containing pBF3 and *S. coelicolor*, *S. lividans* and *S. venezuelae* as recipients were initially selected using the hygromycin resistance marker on pBF3 but then subsequently maintained without selection. Genomic DNA was then prepared from each line. The *hyg* gene was detected in *S. coelicolor*:pBF3 and *S. lividans*:pBF3 lines but not in the *S. venezuelae* lines indicating that pBF3 is not stably maintained in *S. venezuelae*.

DNA conditions to favour circularization. Finally, PCR amplification was performed using oligonucleotides PB3 for (5' GTACGTCGGAGGTCTAGAGA) and PB3rev (5' GCAGCTTCGAGTTTCATCCCG) that prime DNA synthesis from the known sequence within pMS98. To confirm the SV1 integration site, primers PB4 for (5' CA CAGCCCCAACACCGTC) and PB4 rev (5' -GTCGG TGAGGGAGACGATG) were designed to amplify the potential SV1 *attB* from the *S. coelicolor* J1929 DNA. These primers were also used with PB3 and PB3rev to amplify the potential *attR*, *attL* from the exconjugants *S. coelicolor* J1929 pMS98 DNA.

Competing interests

The authors declare that they have no competing interests.

Authors' contributions

BF designed and performed the experiments and helped to write the paper. EY and GT designed and performed experiments. MCMS designed experiments, raised funding and helped to write the paper. All authors read and approved the final manuscript.

Acknowledgements

We are grateful to Dr Maureen Bibb for providing SV1, *S. venezuelae*, the *S. venezuelae* SV1 lysogen, to Professor Mark Buttner for *S. coelicolor* strain J1929, to Professor Mervyn Bibb for *S. coelicolor* M512 and *E. coli* strain ET12567(pUZ8002), to Professor Keith Chater for *S. albus* J1074 and to the late Professor Simon Baumberg for *S. avermitilis*. We are also grateful to Dr Maureen Bibb for discussions on the manuscript. BF acknowledges receipt of a PhD studentship from the Egyptian Ministry of Higher Education and additional funding for his internship at the University of York. This work was funded by the Biotechnology and Biological Science Research Council, UK grant references BB/K003356 and BB/H001212.

Author details

¹Department of Biology, University of York, York YO10 5DD, UK. ²School of Medical Sciences, Institute of Medical Sciences, University of Aberdeen, Aberdeen AB25 2ZD, UK.

Received: 6 January 2014 Accepted: 12 May 2014

Published: 30 May 2014

References

1. Chater KF: *Streptomyces* inside-out: a new perspective on the bacteria that provide us with antibiotics. *Philos Trans R Soc Lond B Biol Sci* 2006, **361**(1469):761–768.
2. Baltz RH: Strain improvement in actinomycetes in the postgenomic era. *J Ind Microbiol Biotech* 2011, **38**(6):657–666.
3. Baltz RH: *Streptomyces* temperate bacteriophage integration systems for stable genetic engineering of actinomycetes (and other organisms). *J Ind Microbiol Biotech* 2012, **39**(5):661–672.
4. Boccard F, Smokvina T, Pernodet JL, Friedmann A, Guerineau M: Structural analysis of loci involved in pSAM2 site-specific integration in *Streptomyces*. *Plasmid* 1989, **21**(1):59–70.
5. Smokvina T, Mazodier P, Boccard F, Thompson CJ, Guerineau M: Construction of a series of pSAM2-based integrative vectors for use in actinomycetes. *Gene* 1990, **94**(1):53–59.
6. Bierman M, Logan R, O'Brien K, Seno ET, Rao RN, Schonher BE: Plasmid cloning vectors for the conjugal transfer of DNA from *Escherichia coli* to *Streptomyces* spp. *Gene* 1992, **116**(1):43–49.
7. Kuhstoss S, Rao RN: Analysis of the integration function of the streptomycete bacteriophage ϕ C31. *J Mol Biol* 1991, **222**(4):897–908.
8. Kuhstoss S, Richardson MA, Rao RN: Plasmid cloning vectors that integrate site-specifically in *Streptomyces* spp. *Gene* 1991, **97**(1):143–146.
9. Khaleel T, Younger E, McEwan AR, Varghese AS, Smith MCM: A phage protein that binds ϕ C31 integrase to switch its directionality. *Mol Microbiol* 2011, **80**(6):1450–1463.

10. Lewis JA, Hatfull GF: Control of directionality in integrase-mediated recombination: examination of recombination directionality factors (RDFs) including Xis and Cox proteins. *Nucl Acid Res* 2001, **29**(11):2205–2216.
11. Brown WR, Lee NC, Xu Z, Smith MCM: Serine recombinases as tools for genome engineering. *Methods* 2011, **53**(4):372–379.
12. Gregory MA, Till R, Smith MCM: Integration site for *Streptomyces* phage ϕ BT1 and the development of novel site-specific integrating vectors. *J Bacteriol* 2003, **185**(17):5320–5323.
13. Morita K, Yamamoto T, Fusada N, Komatsu M, Ikeda H, Hirano N, Takahashi H: The site-specific recombination system of actinophage TG1. *FEMS Microbiol Lett* 2009, **297**(2):234–240.
14. Stuttard C: Generalized transduction in *Streptomyces* species. In *Genetics and Molecular Biology of Industrial Microorganisms*. Edited by Hershberger CL, Queener SW, Hegeman G. Washington DC: American Society of Microbiology; 1989:157–162.
15. Smith MCM, Hendrix RW, Dedrick R, Mitchell K, Ko CC, Russell D, Bell E, Gregory M, Bibb MJ, Pethick F, Jacobs-Sera D, Herron P, Buttner MJ, Hatfull G: Evolutionary relationships among actinophages and a putative adaptation for growth in *Streptomyces* spp. *J Bacteriol* 2013, **195**(21):4924–4935.
16. Hanssen A-M, Sollid JUE: SCCmec in staphylococci: genes on the move. *FEMS Immunol Med Microbiol* 2005, **46**:8–20.
17. Xu Z, Thomas L, Davies B, Chalmers R, Smith MCM, Brown WRA: Accuracy and efficiency define Bxb1 integrase as the best of fifteen candidate serine recombinases for the integration of DNA into the human genome. *BMC Biotech* 2013, **13**:87.
18. Santos CN, Koffas M, Stephanopoulos G: Optimization of a heterologous pathway for the production of flavonoids from glucose. *Metab Eng* 2011, **13**(4):392–400.
19. Bentley SD, Chater KF, Cerdeno-Tarraga AM, Challis GL, Thomson NR, James KD, Harris DE, Quail MA, Kieser H, Harper D, Bateman A, Brown S, Chandra G, Chen CW, Collins M, Cronin A, Fraser A, Goble A, Hidalgo J, Hornsby T, Howarth S, Huang CH, Kieser T, Larke L, Murphy L, Oliver K, O'Neil S, Rabinowitz E, Rajandream MA, Rutherford K: Complete genome sequence of the model actinomycete *Streptomyces coelicolor* A3(2). *Nature* 2002, **417**(6885):141–147.
20. MacNeil DJ: Characterization of a unique methyl-specific restriction system in *Streptomyces avermitilis*. *J Bacteriol* 1988, **170**(12):5607–5612.
21. Bedford DJ, Laity C, Buttner MJ: Two genes involved in the phase-variable ϕ C31 resistance mechanism of *Streptomyces coelicolor* A3(2). *J Bacteriol* 1995, **177**(16):4681–4689.
22. Floriano B, Bibb M: *afsR* is a pleiotropic but conditionally required regulatory gene for antibiotic production in *Streptomyces coelicolor* A3 (2). *Mol Microbiol* 1996, **21**(2):385–396.
23. Ikeda H, Ishikawa J, Hanamoto A, Shinose M, Kikuchi H, Shiba T, Sakaki Y, Hattori M, Omura S: Complete genome sequence and comparative analysis of the industrial microorganism *Streptomyces avermitilis*. *Nat Biotechnol* 2003, **21**(5):526–531.
24. Pullan ST, Chandra G, Bibb MJ, Merrick M: Genome-wide analysis of the role of GlnR in *Streptomyces venezuelae* provides new insights into global nitrogen regulation in actinomycetes. *BMC Genomics* 2011, **12**:175.
25. Chater KF, Wilde LC: *Streptomyces albus* G mutants defective in the SalGI restriction-modification system. *J Gen Microbiol* 1980, **116**(2):323–334.
26. Kieser T, Bibb MJ, Buttner MJ, Chater KF, Hopwood DA: *Practical Streptomyces Genetics*. Norwich: The John Innes Foundation; 2000.
27. Sambrook J, Russell DW: *Molecular Cloning: A Laboratory manual*. New York: Cold Spring Harbor Laboratory Press; 2001.

doi:10.1186/1472-6750-14-51

Cite this article as: Fayed et al.: A novel *Streptomyces* spp. integration vector derived from the *S. venezuelae* phage, SV1. *BMC Biotechnology* 2014 **14**:51.