

RESEARCH ARTICLE

Open Access

Association between body mass index and health-related quality of life, and the impact of self-reported long-term conditions – cross-sectional study from the south Yorkshire cohort dataset

Benjamin Kearns^{*}, Roberta Ara, Tracey Young and Clare Relton

Abstract

Background: We sought to quantify the relationship between body mass index (BMI) and health-related quality (HRQoL) of life, as measured by the EQ-5D, whilst controlling for potential confounders. In addition, we hypothesised that certain long-term conditions (LTCs), for which being overweight or obese is a known risk factor, may mediate the association between BMI and HRQoL. Hence the aim of our study was to explore the association between BMI and HRQoL, first controlling for confounders and then exploring the potential impact of LTCs.

Methods: We used baseline data from the South Yorkshire Cohort, a cross-sectional observational study which uses a cohort multiple randomised controlled trial design. For each EQ-5D health dimension we used logistic regression to model the probability of responding as having a problem for each of the five health dimensions. All continuous variables were modelled using fractional polynomials. We examined the impact on the coefficients for BMI of removing LTCs from our model. We considered the self-reported LTCs: diabetes, heart disease, stroke, cancer, osteoarthritis, breathing problems and high blood pressure.

Results: The dataset used in our analysis had data for 19,460 individuals, who had a mean EQ-5D score of 0.81 and a mean BMI of 26.3 kg/m². For each dimension, BMI and all of the LTCs were significant predictors. For overweight or obese individuals (BMI \geq 25 kg/m²), each unit increase in BMI was associated with approximately a 3% increase in the odds of reporting a problem for the anxiety/depression dimension, a 8% increase for the mobility dimension, and approximately 6% for the remaining dimensions. Diabetes, heart disease, osteoarthritis and high blood pressure were identified as being potentially mediating variables for all of the dimensions.

Conclusions: Compared to those of a normal weight (18.5 < BMI < 25 kg/m²), overweight and obese individuals had a reduced HRQoL, with each unit increase in BMI associated with approximately a 6% increase in the odds of reporting a problem on any of the EQ-5D health dimensions. There was evidence to suggest that diabetes, heart disease, osteoarthritis and high blood pressure may mediate the association between being overweight and HRQoL.

Keywords: Obesity, Overweight, Underweight, EQ-5D, Co-morbidities, Regression analysis, Confounding, Mediating

* Correspondence: b.kearns@sheffield.ac.uk
School of Health and Related Research, University of Sheffield, Sheffield, UK

Background

For adults, body mass index (BMI [kg/m^2]) is recommended as a way of classifying their weight as being either underweight (BMI < 18.5), healthy weight (BMI 18.5 to 24.9), overweight (BMI 25 to 29.9) or obese (BMI > 29.9) [1]. Deviations away from the healthy weight range are associated with a lower health-related quality of life (HRQoL) [2-4].

Of the non-healthy weights, the effects of being overweight or obese have received the most attention in the literature, with reports that their prevalence has reached epidemic levels in many countries [5,6]. Being overweight or obese is a major risk factor for many diseases including diabetes, hypertension, coronary heart disease, cancer and stroke [7-9]. There are also substantial cost implications for society; for example it is estimated that in 2007 the economic costs of overweight and obesity were £16 billion in England alone [10], with direct costs to the National Health Service of £3.2 billion [11].

The association between BMI and HRQoL is potentially confounded by the complex biological and social frameworks that cause deviations away from healthy weight [12]. Age, gender, ethnicity, deprivation, education and lifestyle choices such as smoking and activity levels are all potential confounders or mediators that have been explored in the literature [13-15].

The South Yorkshire Cohort (SYC) study [16], is a large observational study which uses a cohort multiple randomised controlled trial design [17]. It collects data on a range of socio-demographics, socio-economics, comorbidities, health resource use and HRQoL and provides an opportunity to study the impact of a wide range of factors that may confound or mediate any assessments of the association between BMI and HRQoL. For our study we hypothesised that socio-demographic and social-economic variables may confound the association between BMI and HRQoL, whilst certain comorbidities (those for which unhealthy weight is a known risk factor) may mediate the association between BMI and HRQoL (that is, being overweight causes the long-term condition, which in turn causes a reduction in HRQoL). Hence the aim of our study was to use the baseline results from the SYC to explore the association between BMI and HRQoL, first controlling for confounders and then exploring the potential impact of long-term conditions.

Methods

The South Yorkshire cohort

South Yorkshire is an English metropolitan county in the Yorkshire and Humber region. It has a population of about 1.29 million spread across the city of Sheffield and three metropolitan boroughs (Barnsley, Rotherham, Doncaster). Rates of obesity vary from 23.7% in Sheffield to 29% in Doncaster [18].

The methods employed for the SYC study have been previously described in depth [16]. It employs a two-stage sampling method, first recruiting general practitioners and then individuals aged between 16 and 85 years registered with these practices.

Questionnaire

The SYC questionnaire included information on a wide-range of variables. A copy of the questionnaire is available online [16]. The study uses data from the participants who filled-in the consent form as agreeing for their information to be used for research purposes. Ethical approval for the SYC was obtained from Leeds East NHS Research Ethics Committee (09/H1306/97).

Measurement of health-related quality of life

Information on health related quality of life was collected using the EuroQoL (EQ-5D) questionnaire [19]. The EQ-5D is a widely used generic instrument which contains five attributes of health status: mobility, self-care, usual activities, pain/discomfort and anxiety/depression. Each of the attributes is measured by a question with three possible responses: no problem, some problems, or extreme problems. The different combinations of responses lead to a total of 243 (3^5) possible health states. A sample of these health states were weighted by the United Kingdom general public using time trade-off techniques and the resulting algorithm was used to calculate the preference-based health state utility values used in the current study [20]. EQ-5D scores range from 1 (perfect health) through 0 (dead) to -0.594 with scores less than zero denoting states worse than dead.

Measurement of socio-demographics and socio-economics

Data were collected on the respondent's age, gender, ethnicity, deprivation score, highest level of education and work status. Ethnicity was based on the 2001 England and Wales Census '5 + 1' categories: 'Asian', 'Black', 'Mixed', 'White' 'Chinese or Other', and 'Not Stated' [21]. Missing responses were coded as 'Not Stated'. Deprivation score was a continuous variable from the 2007 indices of multiple deprivation [22], based on the respondent's postcode. Work status was classified into one of five occupations, based on the National Statistic's Socio-economic Classification (NSSEC) [23]. An additional category was also included for individuals who did not provide information on this.

Measurement of comorbidities and lifestyle

The remaining variables considered for this analysis were smoking status (classified as shown in Table 1), alcohol status (based on the classification used by Purshouse *et al.* [24]) and the following self-reported long-term conditions

Table 1 Distribution of variables and their average values for BMI, EQ-5D and age

Variable	Count	Mean BMI	Mean EQ-5D	Median EQ-5D	Mean Age
Age					
Under 25	1,142	23.45	0.92	1	20.06
25 to 34	1,870	25.02	0.90	1	29.76
35 to 44	2,614	25.94	0.87	1	39.85
45 to 54	3,219	26.53	0.84	0.88	49.66
55 to 64	4,387	27.02	0.80	0.81	59.89
65 to 74	4,159	26.99	0.76	0.80	69.14
75plus	2,069	26.22	0.70	0.73	78.98
Gender					
Male	8,562	26.64	0.81	0.85	56.20
Female	10,898	26.04	0.82	0.85	52.77
Ethnic group					
White	18,735	26.32	0.81	0.85	54.81
Mixed	102	25.76	0.85	1	39.39
Asian	387	25.83	0.83	1	38.88
Black	147	26.93	0.82	0.92	44.27
Chinese or other	89	24.81	0.83	0.85	42.91
Highest education					
Degree/NVQ4-5	5,734	25.33	0.89	1	49.31
A-levels/NVQ3	2,434	25.81	0.85	1	45.18
GCSEs/NVQ1-2	5,155	26.52	0.83	0.85	51.02
None	1,237	27.15	0.76	0.80	64.72
Other	4,900	27.24	0.70	0.76	65.41
Smoking status					
Current smoker	2,540	25.78	0.75	0.80	48.71
Former smoker	6,628	26.90	0.79	0.80	59.75
Never smoked	10,292	25.98	0.85	1	51.83
Deprivation quintile					
Least deprived	3,881	25.32	0.87	1	54.22
Low deprivation	3,894	25.85	0.85	0.92	56.10
Average	3,863	26.22	0.84	0.85	55.01
High deprivation	3,896	26.82	0.79	0.85	53.62
Most deprived	3,926	27.29	0.73	0.80	52.46
NSSEC					
Manager & professional	8,149	25.85	0.87	1	52.59
Intermediate	1,976	26.10	0.84	0.85	51.08
Small employers/etc.	1,185	26.47	0.82	0.85	56.81
Lower supervisory/etc.	1,451	26.84	0.79	0.80	56.20
Semi-routine & routine	2,051	26.73	0.79	0.80	52.01
Missing	4,648	26.78	0.73	0.80	58.37

Table 1 Distribution of variables and their average values for BMI, EQ-5D and age (Continued)

Alcohol consumption					
None	6,690	26.92	0.75	0.80	54.91
Moderate	10,648	25.89	0.85	0.88	54.37
Hazardous	1,961	26.30	0.86	0.88	51.92
Harmful	161	27.33	0.76	0.80	51.50
LTCs					
Diabetes	1,268	30.06	0.66	0.73	64.82
Heart disease	1,248	28.02	0.62	0.69	70.05
Stroke	413	27.25	0.58	0.69	69.70
Cancer	557	26.82	0.70	0.71	66.86
Osteoarthritis	1,849	28.15	0.56	0.69	67.79
Breathing problems	2,107	27.42	0.66	0.73	59.14
High blood pressure	3,736	28.59	0.71	0.76	66.28
No LTCs	7,526	25.08	0.94	1	46.41

(LTCs): diabetes, heart disease, stroke, cancer, osteoarthritis, breathing problems, and high blood pressure. All LTCs were binary variables of the form 'absent/present' and were chosen as they may be potentially mediating comorbidities [25].

Statistical analysis

For this analysis we developed separate regression models for each of the five individual health dimensions of the EQ-5D. Due to the very small numbers reporting an 'extreme problem' for any of the dimensions we used logistic regression, with the outcome being 'any problem'. Models were built using backwards selection (with the least significant variable removed one at a time). Variables were removed if their p-value (based on likelihood ratio tests) was less than 0.157, as this has been shown to produce good results [26].

STATA version 10.1 [27] was used for all analyses. Age, BMI and deprivation were the only continuous variables; these were modelled using fractional polynomials; the use of these allows a systematic framework for identifying any non-linear associations [26]. Briefly, each continuous variable is represented by a combination of polynomials (typically one or two), where the powers for the polynomials are estimated from the data and taken from the set $\{-2, -1, -\frac{1}{2}, 0, \frac{1}{2}, 1, 2, 3\}$, or the logarithm of the variable is selected.

The ability of the models to correctly classify patients was summarised by their 'area under the receiver-operating-characteristic curve' (AUROC). The AUROC can take a value between 0 and 1, with values between 0.7 to 0.8 indicating acceptable discrimination, values between 0.8 to 0.9 indicating excellent discrimination, and values above 0.9 indicating outstanding discrimination [28].

Being overweight or obese is a known risk factor for the LTCs explored in this analysis. Because of this, in a regression model that includes any of the LTCs, the association between BMI and HRQoL (as estimated by the regression coefficients) will be attenuated because some of this association is ascribed to the LTCs. However, some respondents will also have developed LTCs which were not caused by changes in their BMI. Regression models excluding the LTCs will ignore the association between LTCs and HRQoL that is independent of BMI. The approach adopted for this analysis was to consider LTCs for inclusion in models, but to measure the proportion of the association between BMI and HRQoL that is attenuated (explained) by the inclusion of each LTC in the models.

For the initial exploratory analysis, observed associations between the variables were tested for statistical significance. T-tests were used to compare continuous variables between binary categories, and linear regression was used to compare the association between two continuous variables. It should be noted that these comparisons were not defined a priori, and so the p-values should be interpreted with caution. References to statistical significance are always at the 5% level. Pairwise Pearson's correlation coefficients ('r') were also calculated.

The effect of comorbidities

It was hypothesised that the comorbid LTCs included in our study may mediate the association between BMI and HRQoL; that is having an unhealthy BMI may result in both developing the LTC and reduced HRQoL. If this is the case then including LTCs in the model may not always be appropriate, as some of the association between BMI and HRQoL would be erroneously attributed to the LTC. However, without longitudinal data this hypothesis cannot easily be tested. Instead our study's analysis was repeated, but without the LTCs. If the hypothesis is correct then removing the LTCs would be expected to increase the beta coefficient for BMI. The change in the BMI beta coefficient when an LTC is removed (measured as a proportion of the beta coefficient when the LTC is included) is known as the proportion of treatment explained (PTE).

Results

Initial exploratory analysis

The dataset contains data for 20,710 individuals. Individuals were dropped if they had missing data for age (251, 1.2%), deprivation (70, 0.3%) or gender (3, 0.01%), ethnicity (91, 0.4%) or BMI (831, 4.0%). Four individuals also had BMI values of 11.9, 71.1, 72.3 and 78.4 that were deemed to be implausible. These 1,250 individuals

were excluded from subsequent analysis, leaving 19,460 individuals, who had a mean EQ-5D score of 0.81 and a mean BMI of 26.3 kg/m². There were some missing data for each EQ-5D health dimension; mobility 245 (1.3%), self-care 372 (1.9%), usual activities 255 (1.3%), pain/discomfort 324 (1.7%), anxiety/depression 489 (2.5%). Missing responses for the LTCs were assumed to represent the condition being absent.

The distributions of the variables and their mean values of BMI and EQ-5D are shown in Table 1. As many outcomes, including HRQoL, are correlated with age [29] mean values of age are also shown.

In general, higher levels of BMI were associated with lower levels of EQ-5D and increased age. In particular, people with a LTC, no education qualification, or missing NSSEC details were on average older, had higher BMI and had lower HRQoL than the rest of the sample (all $p < 0.001$). There were exceptions to these associations; for example current smokers had a lower quality of life than people who had never smoked ($p < 0.001$), despite being younger ($p < 0.001$) and having a lower BMI ($p = 0.072$). Similarly, increasing levels of deprivation were associated with an increase in BMI, but a decrease in both age and HRQoL (all $p < 0.001$). Of note, moderate and hazardous drinkers had both a lower BMI and higher HRQoL than those who didn't consume alcohol in the past week (all $p < 0.001$). Correlation coefficients for these associations are provided in the Additional file 1.

The variable NSSEC had high levels of missing responses (30.1%). This variable was suspected *a priori* to have a strong correlation with deprivation. This was confirmed by exploratory analysis (for example, the 'Manager and Professional' category had a mean deprivation score of 16.95 whilst the 'semi-routine and routine' category had a mean score of 28.42), and so the variable NSSEC was not included in any regression models.

The distributions of responses to each of the EQ-5D health dimensions are presented in Table 2. For each dimension over half of the sample responded as having no problems, whilst only a very small number responded as having extreme problems. A total of 8,508 respondents (44%) reported no limitations on any of the five dimensions (and so their EQ-5D value = 1).

The proportion of individuals who responded as having a problem (either some or extreme) in each health dimension is shown in Table 3, broken down by BMI (weight) group. Compared with the normal weight group, all of the non-healthy weight groups are associated with an increasing tendency to report a problem for each dimension.

Univariable associations between BMI and EQ-5D

The association between the overall EQ-5D score and BMI is shown in Figure 1. Whilst there was evidence of

Table 2 Proportion of responses (%) for each level of the EQ-5D health dimensions

	Mobility	Self-care	Usual activities	Pain/discomfort	Anxiety/depression
No problems	76.5	92.8	77.8	55.8	73.6
Some problems	23.4	6.8	20.4	39.5	24.2
Extreme problems	0.1	0.3	1.8	4.8	2.2
Total (count)	19,217	19,090	19,207	19,134	18,973

an association, with deviations from a healthy weight having a lower EQ-5D score, there was also a high degree of scatter, and the distributional features of the overall EQ-5D score that make it problematic to analyse (bounded, skewed and tri-modal) were noticeable.

Figure 2 shows the association between the probability of a problem (for each EQ-5D health dimension) and BMI (left-panel) and age (right-panel). With the exception of the anxiety/depression dimension – which showed at best a weak association with both BMI and age – the nature of the association with BMI seemed to be constant across the health dimensions, whilst the association with age appeared to be linear, with possible slight curvature for some health dimensions. Because of this, a common fractional polynomial was chosen for BMI (powers -2 , -1), whilst for age a fractional polynomial with one power was chosen. For deprivation, a fractional polynomial with two powers was chosen. For the anxiety/depression regression model all three continuous variables were modelled using fractional polynomials of two powers.

Multivariable associations between BMI and EQ-5D

For this analysis all of the covariates were considered for inclusion in the logistic regression models. The resulting models are displayed in Table 4. These models may be used to predict EQ-5D scores for individuals; worked examples of predictions are included in Additional file 1.

Results for the four health dimensions mobility, self-care, usual activities and pain were all very similar to each other, whilst those for anxiety/depression were different to the other four dimensions.

Each unit increase in BMI above normal weight was associated with an approximate increase in the odds of having a problem of between 4% and 12% for the dimensions

mobility, self-care, usual activities and pain. For anxiety/depression the increase was lower, at about 3%. The estimated odds ratios for obese individuals were very similar to those for overweight individuals, but were estimated with more precision (had shorter confidence intervals). All of the associations for obese individuals were statistically significant ($p < 0.05$), whilst only three of the five associations were statistically significant for overweight individuals, and none were for underweight individuals. However, the point-estimates were all above 1, suggesting a possible ‘U-shaped’ association between BMI and HRQoL.

The estimated odds for deprivation and for age were both consistent across all of the health dimensions, with the notable exception of pain, for which age has a much larger impact. The odds for male were of borderline significance for the first four dimensions (this variable was dropped by the stepwise method for the usual activity and pain dimensions), but very significant for the anxiety/depression dimension. The effect for anxiety/depression was also in the opposite direction to that observed for the other dimensions.

The presence of any of the LTCs was associated with a statistically significant increase in the odds of reporting a problem. With the exception of the model for anxiety/depression, the presence of osteoarthritis was associated with the largest increase in odds amongst the LTCs. The estimated odds ratios for osteoarthritis were often much larger than those for the other LTCs. For example, the odds of reporting a problem on the pain domain are 12.8 for people with osteoarthritis. This value is more than 4.5 larger than any of the odds reported for any of the other LTCs. The remaining LTCs could be roughly grouped into two, with heart disease, stroke and breathing

Table 3 Proportion of respondents (%) indicating a problem on the EQ-5D dimensions sub-grouped by BMI group

	Underweight (BMI < 18.5)	Normal (BMI 18.5 to 24.9)	Overweight (BMI 25 to 29.9)	Obese (BMI > 29.9)	All responders
Mobility	20.5	14.8	24.9	41.5	23.5
Self-care	11.1	4.4	6.4	14.7	7.2
Usual activities	24.2	16.0	22.4	36.5	22.2
Pain/discomfort	35.2	34.7	47.3	61.4	44.2
Anxiety/depression	32.4	23.8	24.8	35.2	26.4
Total (count)	302	8,459	7,078	3,621	19,460

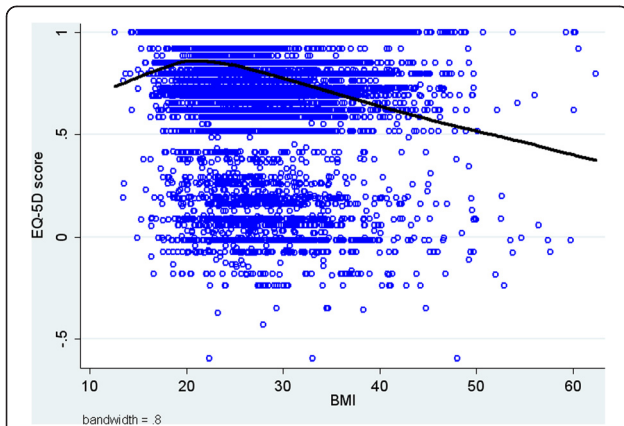


Figure 1 Scatter-plot of EQ-5D score versus BMI, with a smoothed average. The smoothed average was obtained using STATA's 'lowess' command and the default settings.

problems having odds ratios in the range of 1.4 to 2.8 (across the five models), whilst diabetes, cancer and high blood pressure had odds ratios in the range of 1.2 to 2.1. In comparison, the range of odds for smokers (compared to non-smokers) is 1.2 to 2.1 across the five models, whilst the range for those with no education (compared to those with a degree or NVQ4-5) is 1.5 to 2.4.

In general odds ratios from models fitted to the anxiety/depression dimension were smaller than corresponding odds ratios from the other models, suggesting that some of the variables that explain why people report problems

for the anxiety/depression dimension are not in the final model. This suggestion was supported by the area under the receiver operating characteristic curve (AUROC) measure. The AUROC for the anxiety/depression dimension (0.656) was 16% lower than the next smallest (Pain; 0.778) and 23% lower than the highest (Self-care; 0.849). Using the classifications recommended by Hosmer and Lemeshow the mobility, self-care and usual activities models show excellent discrimination, the pain model shows acceptable discrimination, whilst the anxiety/depression model only shows weak discrimination [28].

For each long-term condition, the proportion of treatment explained is presented in Table 5. The PTE was calculated separately for overweight/obese and for underweight individuals (using the groupings described in the footnote to Table 4). As the association between BMI and HRQoL was not statistically significant for those underweight, the PTE was only calculated for the overweight group.

Results were similar across all five dimensions, with diabetes, heart disease, osteoarthritis and high blood pressure explaining a statistically significant amount of the association between BMI and HRQoL for all the dimensions. There was little evidence to suggest that stroke, cancer or breathing problems explained any of the association between BMI and HRQoL, with point-estimates often less than 1%. The one exception is breathing problems which explained a statistically significant amount of the association between BMI and the probability of having a problem in the anxiety/depression dimension.

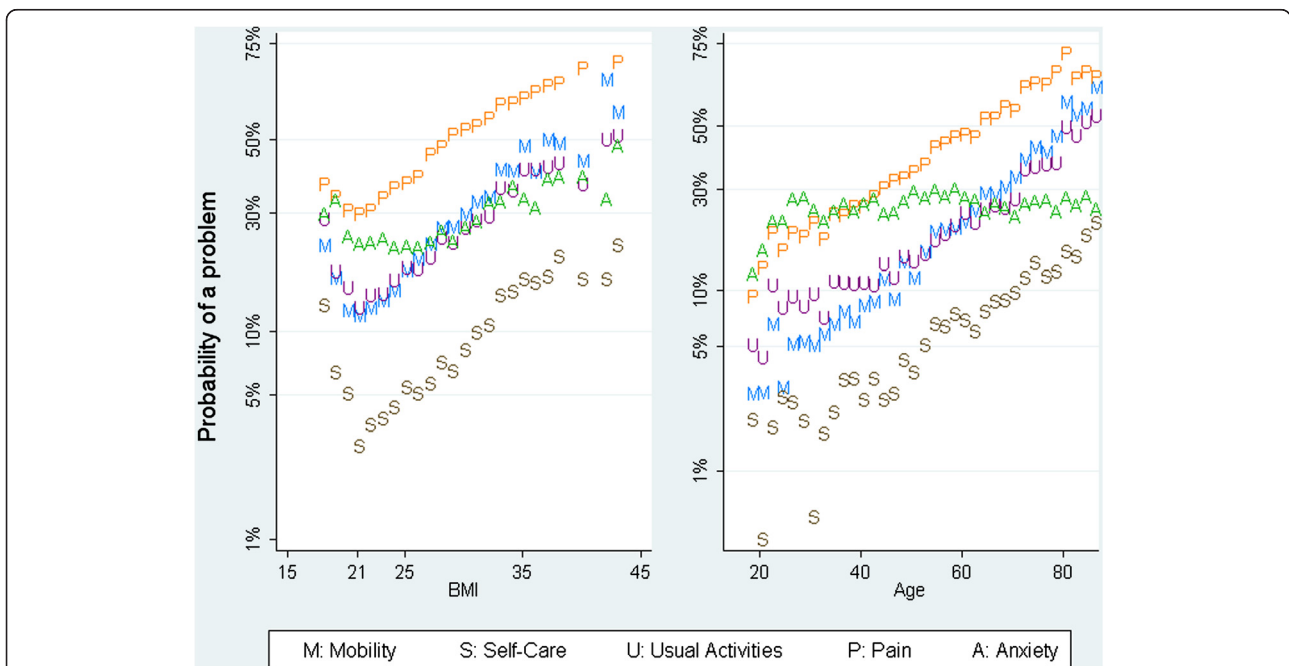


Figure 2 The probability of responding as having a problem for each EQ-5D health dimension. Left-panel: by BMI, right panel: by age. Probabilities are displayed on the logit scale.

Table 4 Logistic regression models for the health dimensions mobility, self-care, activities, pain and anxiety

Beta coefficients	Mobility	Self-care	Activities	Pain	Anxiety/Depression †
Sample size (n)	19,217	19,090	19,207	19,134	18,973
BMI ⁻²	19.13 (10.58 to 34.54)	19.26 (9.47 to 39.17)	13.24 (7.67 to 22.83)	8.4 (5.05 to 13.97)	8.65 (4.15 to 18.01)
BMI ⁻¹	0.06 (0.04 to 0.09)	0.07 (0.04 to 0.13)	0.1 (0.06 to 0.15)	0.13 (0.09 to 0.2)	0.06 (0.02 to 0.15)
Age*	1.04 (1.04 to 1.04)	1.02 (1.01 to 1.02)	1.02 (1.02 to 1.03)	3.82 (3.39 to 4.26)	0.56 (0.49 to 0.63)
Deprivation	1.01 (1.01 to 1.02)	1.02 (1.01 to 1.02)	1.01 (1.01 to 1.02)	1.01 (1.01 to 1.01)	1.01 (1.01 to 1.01)
Male gender	1.21 (1.11 to 1.32)	1.27 (1.11 to 1.45)			0.70 (0.96 to 0.97)
Non-white ethnicity					0.87 (0.97 to 1.01)
Alcohol status					
Moderate drinker	0.64 (0.59 to 0.7)	0.53 (0.47 to 0.61)	0.66 (0.61 to 0.73)	0.76 (0.7 to 0.82)	0.76 (0.96 to 0.98)
Heavy drinker	0.57 (0.49 to 0.67)	0.36 (0.28 to 0.48)	0.58 (0.5 to 0.67)	0.76 (0.67 to 0.84)	0.85 (0.97 to 1)
Highest education					
A-levels / NVQ3	1.4 (1.2 to 1.65)	1.48 (1.12 to 1.97)	1.17 (1.01 to 1.36)	1.58 (1.4 to 1.77)	1.3 (1.01 to 1.04)
GCSE / NVQ1-2	1.34 (1.19 to 1.52)	1.38 (1.09 to 1.73)	1.17 (1.04 to 1.32)	1.58 (1.45 to 1.73)	1.34 (1.02 to 1.04)
Other	1.65 (1.39 to 1.95)	2.51 (1.92 to 3.25)	1.46 (1.23 to 1.73)	1.79 (1.55 to 2.08)	1.31 (1.01 to 1.04)
None	1.9 (1.67 to 2.16)	2.41 (1.93 to 2.97)	1.57 (1.38 to 1.77)	2.03 (1.84 to 2.25)	1.45 (1.03 to 1.05)
Smoking status					
Current	2.01 (1.77 to 2.27)	2.08 (1.73 to 2.48)	2.08 (1.84 to 2.34)	1.52 (1.38 to 1.68)	1.75 (1.05 to 1.07)
Former	1.25 (1.13 to 1.36)	1.17 (1.02 to 1.36)	1.26 (1.15 to 1.38)	1.27 (1.17 to 1.36)	1.17 (1.01 to 1.02)
Long-term conditions					
Diabetes	1.62 (1.39 to 1.88)	1.26 (1.04 to 1.52)	1.4 (1.22 to 1.63)	1.22 (1.05 to 1.4)	1.25 (1.01 to 1.04)
Heart disease	2.36 (2.03 to 2.75)	1.92 (1.6 to 2.27)	2.75 (2.39 to 3.19)	1.67 (1.43 to 1.95)	1.45 (1.02 to 1.05)
Stroke	2.27 (1.75 to 2.94)	2.53 (1.93 to 3.32)	2.8 (2.18 to 3.6)	1.43 (1.11 to 1.86)	1.48 (1.02 to 1.06)
Cancer	1.92 (1.55 to 2.36)	1.9 (1.46 to 2.46)	2.12 (1.73 to 2.61)	1.55 (1.27 to 1.9)	1.35 (1.01 to 1.05)
Osteoarthritis	5.81 (5.16 to 6.62)	3.35 (2.89 to 3.86)	4.31 (3.86 to 4.85)	12.81 (10.49 to 15.49)	1.6 (1.04 to 1.06)
Breathing problems	2.53 (2.27 to 2.86)	2.36 (2.03 to 2.72)	2.64 (2.34 to 2.94)	1.82 (1.63 to 2.05)	1.65 (1.04 to 1.06)
High blood pressure	1.27 (1.16 to 1.4)	1.28 (1.12 to 1.49)	1.23 (1.12 to 1.36)	1.16 (1.05 to 1.27)	1.15 (1.01 to 1.02)
Constant	-2.33 (-2.46 to -2.21)	-3.85 (-4.06 to -3.63)	-2.07 (-2.18 to -1.96)	-0.86 (-0.95 to -0.77)	-1.37 (-1.57 to -1.17)
BMI value for minimum problems.	20.73	22.49	22.15	20.98	23.94
AUROC	0.844	0.849	0.801	0.778	0.656

Table 4 Logistic regression models for the health dimensions mobility, self-care, activities, pain and anxiety (Continued)

Statistical significance; all variables in the model have p < 0.001 except:	-	Male(0.001), A-levels (0.006), GCSEs (0.006), former smoking (0.025), diabetes (0.018)	A-levels (0.038), GCSEs (0.008).	Diabetes (0.008), stroke (0.008) , high blood pressure (0.002)	Alcohol heavy drinker (0.011), Ethnicity: Non-white (0.139) Highest education; other, diabetes, stroke (all 0.001), cancer (0.002), high blood pressure (0.003)
Approximate odds-ratios (95% confidence interval) per unit change**:					
Underweight	1.09 (0.91 to 1.29)	1.21 (0.98 to 1.48)	1.10 (0.94 to 1.29)	1.01 (0.88 to 1.16)	1.05 (0.93 to 1.20)
Overweight	1.08 (1.03 to 1.13)	1.04 (0.97 to 1.13)	1.06 (1.01 to 1.11)	1.12 (1.75 to 1.16)	1.03 (0.99 to 1.07)
Obese	1.08 (1.06 to 1.10)	1.06 (1.03 to 1.08)	1.06 (1.04 to 1.08)	1.05 (1.03 to 1.07)	1.03 (1.01 to 1.05)

AUROC – Area under the receiver operating characteristic curve, BMI: Body mass index. Values in brackets are 95% confidence intervals.

The constant term applies to 54.28 year old white females who do not smoke, have not consumed alcohol in the last week, hold a degree or NVQ4-5, have no long-term conditions, a deprivation score of 27.05 and a BMI of 26.29.

*Age is linear for Mobility, Self-Care and Activities and Ln(Age/10) for Pain. All continuous variables are centred; additionally the two BMI variables have been scaled (divided by 10). Odds ratios are per 0.1 increase.

†The continuous variables BMI and Age are modelled differently for anxiety/depression. The term 'BMI⁻²' is replaced with 'BMI^{-0.5}'. The stated coefficient for age corresponds to (Age/10)¹. An additional term for age is also necessary; (Age/10)^{0.5}. This has odds ratio 0.86 (0.83 to 0.89). For anxiety/depression the two odds ratios for age are per 0.1 increase.

**These odds ratios were estimated by assuming separate linear trends amongst those underweight, overweight, and obese. These values should not be used when making predictions. To increase numbers in the underweight category, a BMI value < 20 was taken as being underweight.

Table 5 Proportion (%) of association explained, with 95% confidence intervals

Individuals with BMI ≥ 25 kg/m ²	Mobility	Self-care	Usual activities	Pain	Anxiety/depression
Diabetes	6.78 (5.29 to 8.51)	9.87 (6.11 to 15.40)	9.15 (6.78 to 12.81)	4.25 (2.77 to 5.99)	11.48 (6.37 to 20.02)
Heart disease	2.88 (1.21 to 4.63)	6.89 (3.89 to 11.98)	6.08 (2.98 to 9.51)	2.24 (1.25 to 3.36)	5.12 (2.51 to 11.15)
Stroke	-0.28 (-1.37 to 0.68)	0.28 (-2.83 to 3.35)	-0.003 (-2.08 to 1.71)	-0.08 (-0.62 to 0.49)	0.18 (-1.62 to 2.15)
Cancer	0.06 (-0.69 to 0.76)	0.75 (-0.54 to 2.65)	0.30 (-1.11 to 1.58)	0.08 (-0.45 to 0.59)	0.22 (-0.74 to 1.92)
Osteoarthritis	6.65 (3.51 to 10.10)	14.33 (8.97 to 23.04)	13.14 (8.62 to 18.68)	8.14 (4.05 to 11.68)	9.90 (5.49 to 17.47)
Breathing problems	0.10 (-2.05 to 1.86)	1.11 (-3.24 to 4.71)	1.35 (-2.00 to 4.58)	0.94 (-0.41 to 2.49)	3.52 (0.48 to 8.45)
High blood pressure	8.08 (6.22 to 10.45)	13.82 (9.23 to 20.12)	12.06 (8.97 to 15.98)	6.52 (4.52 to 8.77)	13.44 (7.73 to 25.76)

Generated using a single LTC (on its own, with no other LTCs) in the models detailed in Table 4. Confidence intervals are bias-corrected, based on 1000 bootstrap replications of the data (implemented in STATA using the program described by Vittinghoff et al. [30]). Values in italics represent results for which the 95% confidence interval excludes zero.

Discussion

We found that being overweight was associated with statistically significant reductions in HRQoL, with each unit increase in BMI associated with approximately a 6% increase in the odds of reporting a problem on any of the EQ-5D dimensions. We also found an association between being underweight and HRQoL, but this association was not statistically significant.

We explored the impact on the overweight and HRQoL association of seven self-reported LTCs; diabetes, heart disease, stroke, cancer, osteoarthritis, breathing problems and high blood pressure. These were chosen because being overweight is a known risk factor for their development. We found evidence to suggest that diabetes, heart disease, osteoarthritis and high blood pressure may mediate the association between being overweight and HRQoL, as controlling for them in our models led to a statistically significant reduction in the coefficient for BMI. This potentially mediating association for diabetes and high blood pressure is slightly surprising given that their odds ratios were generally quite small, being in the range of 1.2 to 1.3 for high blood pressure and 1.2 to 1.6 for diabetes. In contrast, there was little evidence of potential mediation for breathing problems (range of odds ratios: 1.6 to 2.6) or for stroke (range: 1.4 to 2.8).

Using the fitted fractional polynomials it is possible to calculate, for each dimension, the value at which the reported number of problems is at a minimum. These values all lie between 20 kg/m² and 24 kg/m², lending support to the suggestion that having a BMI in the normal range is associated with relatively higher HRQoL.

The results of our study support the existing literature by showing the association between deviations away from a healthy weight and reduced HRQoL, as measured using the EQ-5D. Studies that measured HRQoL using the summary EQ-5D score found that being overweight or obese resulted in a statistically significant reduction in HRQoL; this has been observed in representative samples from both the United Kingdom [15] and United States [13], as well as in a sample from the United States

of individuals with diabetes, or at risk of diabetes [14]. When looking at the individual health dimensions we found that being obese was associated with reporting a statistically significantly higher proportion of problems for each of the health dimensions. Similar associations were observed for being overweight, although these were not significant for the self-care and the anxiety/depression domains. In contrast, a study based in the United Kingdom [2], reported that the only statistically significant associations were with the mobility dimension for overweight individuals, and with the mobility and pain dimensions for obese individuals. A study using an Asian population from Singapore [31] that considered the mobility and usual activities dimensions did not find any significant associations for those overweight, and only the mobility dimension was significant for obese individuals.

We also found evidence to suggest that being underweight was associated with reduced HRQoL, although this association did not reach statistical significance. A 'U-shaped' association between BMI and HRQoL has been reported in a number of studies [2,3,13,31-33], suggesting that the lack of association observed in this study was due to the small number of underweight individuals.

We found that the presence of an LTC was associated with a decrease in HRQoL. Of the LTCs considered, osteoarthritis had the largest association, followed by heart disease, stroke and breathing problems, which all had roughly the same impact on HRQoL. There have been a number of studies looking at the impact of LTCs on HRQoL [34-36], but less that have done so whilst also assessing the impact of BMI. Two studies included both LTCs and BMI in regression models, but did not report the coefficients for the LTCs [2,37] Another two studies showed that there was an association between HRQoL and the number of LTCs, but they did not look at the impact of individual LTCs [38]. Our results are similar to a study from the United States, which showed that heart disease and stroke had a larger impact on HRQoL than diabetes and hypertension (high blood pressure

in our study) [13]. However, there is some differences between our results, which showed a relatively small impact of cancer, to that of another United Kingdom study, which showed that the impact of cancer on HRQoL was greater than that for diabetes, heart problems, and respiratory problems [3].

Ours is the only study that we are aware of that explores the potentially mediating effect of LTCs on the association between BMI and HRQoL.

We found that the estimated odds ratios for overweight and for obese individuals were very similar. However, the odds were estimated with more precision for the latter group, even though they were a much smaller sample. This suggests that the association between BMI and HRQoL is stronger amongst obese individuals. The association for underweight individuals was estimated with much less precision. However, when considering this uncertainty, there was some evidence to suggest that the effect of each unit increase in BMI below normal weight was similar to the effect of each unit increase in BMI above normal weight.

Particular strengths of our study were that we employed a systematic framework (fractional polynomials) for exploring and modelling any non-linear relationship between BMI and HRQoL, and that we also quantified the proportion of this relationship that may be due to the effects of LTCs for which being overweight or obese is a known risk factor. Another strength of our study was the ability to control for a wide variety of potentially confounding factors. The associations of these factors with BMI or HRQoL may also be of interest in their own right, for example the finding that respondents with moderate or hazardous alcohol consumption are less likely to report a problem for any of the health dimensions than respondents with no alcohol consumption (in the past week).

There are limitations to this work. For example, all of the measurements and outcomes are self-reported and so may be subject to bias. For example, it has been shown that the self-reporting diseases is not 100% accurate [5]. In addition, there may be some shrinkage of reported BMI values, as individuals may be less likely to report height and weight values that lead to extremely high or extremely low BMI values. It is unclear if such shrinkage would be associated with a bias in the reporting of HRQoL, but it seems likely that any shrinkage of self-reported BMI would lead to an attenuation of the observed association between BMI and HRQoL.

The cross-sectional nature of the data means that the associations that we have reported may not be causal associations. In addition, the model for the anxiety/depression dimension did not appear to perform as well as the other models; having poorer discrimination, with shrinkage of many odds ratios towards unity. The association between BMI and HRQoL also appeared to be different for this dimension (compared to all of the other health

dimensions); further research exploring predictors of responses to this dimension may be beneficial.

Of the variables originally considered for analysis, we did not use NSSEC due to high levels of missing data. The usefulness of this variable in future postal surveys needs to be investigated. As an alternative we used deprivation score as a proxy measure because this could be derived from the patient's postcode. In addition, model building, using backwards selection, used a p-value for removal of 0.157. This value was chosen because it approximates model selection using Akaike's Information Criteria [26]. Whilst there is no consensus over the p-value to be used, the results of this study are fairly robust to the choice of p-value. For example, if a smaller p-value for removal of 0.05 is used, this leads to diabetes being removed from the model for Self-Care, and ethnicity being removed from the Anxiety/Depression model.

Conclusion

There is a large evidence base looking at the association between BMI and HRQoL. Using the results of a large cohort study we have added to this evidence base. We have confirmed that there is a non-linear association between BMI and HRQoL, and have showed how fractional polynomial modelling may be used to capture this type of association. We have also explored the impact of LTCs on this association. We have shown that only some of the LTCs are potential mediators, it would be useful for further research, using longitudinal data, to explore this finding in more depth.

In conclusion, our work represents a valuable addition to the literature as we have been able to estimate the association between BMI and HRQoL using powerful statistical techniques, whilst also being able to control for a wide variety of variables and measure the potential impact of LTCs on this association.

Additional file

Additional file 1: Worked example of predicting EQ-5D scores.

Abbreviations

AUROC: Area under the receiver operating characteristic curve; BMI: Body mass index; HRQoL: Health-related quality of life; LTC: Long-term condition; NSSEC: National statistic's socio-economic classification; PTE: Proportion of treatment explained; SYC: South Yorkshire Cohort.

Competing interests

The authors declare that they have no competing interests.

Authors' contributions

BK performed the analysis and interpretation of the data for this manuscript and drafted the article. He had full access to all the data in the study and takes responsibility for the integrity of the data and the accuracy of the data analysis. CR was involved in acquisition of the data. RA, TY and CR were involved in the conception of the study and acquisition of the data. They also critically revised the manuscript for important intellectual content, contributing to all drafts of the manuscript. All authors read and approved the final manuscript.

Acknowledgements

We are grateful to all the patients who took part in this study and their GPs in help recruiting them and the whole SYC team as well as the South Yorkshire CLAHRC, the University of Sheffield and Sheffield Hallam University. This publication is the work of BK, RA, TY and CR, and does not necessarily reflect the views of the SYC Management Team & South Yorkshire Cohort Steering Committee. This paper presents independent research by the National Institute for Health Research Collaboration for Leadership in Applied Health Research and Care for South Yorkshire (NIHR CLAHRC SY). The views and opinions expressed are those of the authors, and not necessarily those of the NHS, the NIHR or the Department of Health. CLAHRC SY would also like to acknowledge the participation and resources of our partner organisations. Further details can be found at www.clahrc-sy.nihr.ac.uk.

Received: 28 January 2013 Accepted: 25 September 2013

Published: 25 October 2013

References

- World Health Organization: *World Health Organization: Global Database on Body Mass Index*; 2012. <http://www.who.int/bmi>.
- Sach T, Barton G, Doherty M, Muir K, Jenkinson C, Avery A: **The relationship between body mass index and health-related quality of life: comparing the EQ-5D, EuroQol VAS and SF-6D.** *Int J Obes (Lond)* 2006, **31**:189–196.
- Soltoft F, Hammer M, Kragh N: **The association of body mass index and health-related quality of life in the general population: data from the 2003 health survey of England.** *Qual Life Res* 2009, **18**:1293–1299.
- Ara R, Blake L, Gray L, Hernandez M, Crowther M, Dunkley A, et al: **What is the clinical effectiveness and cost-effectiveness of using drugs in treating obese patients in primary care? A systematic review.** *Health Technol Assess* 2012, **16**:1–197.
- Blissmer B, Riebe D, Dye G, Ruggiero L, Greene G, Caldwell M: **Health-related quality of life following a clinical weight loss intervention among overweight and obese adults: intervention and 24 month follow-up effects.** *Health Qual Life Outcomes* 2006, **4**:43.
- Scottish Intercollegiate Guidelines Network: **SIGN National Clinical Guideline 115: Management of Obesity.** *Manage Obes* 2010, **115**. <http://www.sign.ac.uk/pdf/sign115.pdf>.
- Field A, Coakley E, Must A, Spadano J, Laird N, Dietz W, et al: **Impact of overweight on the risk of developing common chronic diseases during a 10-year period.** *Arch Intern Med* 2012, **161**:1581–1586.
- Wilson P, D'Agostino R, Sullivan L, Parise H, Kannel W: **Overweight and obesity as determinants of cardiovascular risk: the Framingham experience.** *Arch Intern Med* 2002, **162**:1867–1872.
- Kopelman P: **Health risks associated with overweight and obesity.** *Obes Rev* 2007, **8**:S13–S17.
- Department of Health: *Healthy Lives, Healthy People: A Call to Action on Obesity in England*; 2011. <https://www.gov.uk/government/publications/healthy-lives-healthy-people-a-call-to-action-on-obesity-in-england>.
- Allender S, Rayner M: **The burden of overweight and obesity-related ill health in the UK.** *Obes Rev* 2007, **8**:467–473.
- Butland B, Jebb S, Kopelman P, McPherson K, Thomas S, Mardell J, et al: **Foresight. Tackling obesity.** *Future choices* 2007. <http://www.bis.gov.uk/assets/foresight/docs/obesity/17.pdf>.
- Jia H, Lubetkin E: **The impact of obesity on health-related quality-of-life in the general adult US population.** *J Public Health* 2005, **27**:156–164.
- Grandy S, Fox K: **EQ-5D visual analog scale and utility index values in individuals with diabetes and at risk for diabetes: findings from the study to help improve early evaluation and management of risk factors leading to diabetes (SHIELD).** *Health Qual Life Outcomes* 2008, **6**:18.
- Kinge J, Morris S: **Socioeconomic variation in the impact of obesity on health-related quality of life.** *Soc Sci Med* 2010:1–9.
- Relton C, Bissell P, Smith C, Blackburn J, Cooper C, Nicholl J, et al: **South Yorkshire cohort: a 'cohort trials facility' study of health and weight - protocol for the recruitment phase.** *BMC Public Health* 2011, **11**:640.
- Relton C, Torgerson D, O'Cathain A, Nicholl J: **Rethinking pragmatic randomised controlled trials: introducing the "cohort multiple randomised controlled trial" design.** *Br Med J* 2010, **340**:963–967.
- National Obesity Observatory: *NOO e-Atlas: Adult Obesity, Determinants and Associated Diseases.* <http://www.noo.org.uk/visualisation/eaatlas>.
- EuroQol. *EuroQol.* <http://www.euroqol.org/>.
- Dolan P: **Modeling valuations for EuroQol health states.** *Med Care* 1997, **35**:1095–1108.
- Department of Health: *National standards for ethnic group and related matters*; 2012. http://webarchive.nationalarchives.gov.uk/+www.dh.gov.uk/en/publicationsandstatistics/publications/publicationspolicyandguidance/browsable/dh_5319155.
- HM Government: *Index of Multiple Deprivation (IMD) 2007 - Datasets.* http://data.gov.uk/dataset/index_of_multiple_deprivation_imd_2007.
- Office for National Statistics: *The National Statistics Socio-economic Classification (NS-SEC).* <http://www.ons.gov.uk/ons/guide-method/classifications/current-standard-classifications/soc2010/soc2010-volume-3-ns-sec-rebased-on-soc2010-user-manual/index.html>.
- Purshouse R, Meier P, Brennan A, Taylor K, Rafia R: **Estimated effect of alcohol pricing policies on health and health economic outcomes in England: an epidemiological model.** *Lancet* 2010, **375**:1355–1364.
- National Audit Office: *Tackling Obesity in England.* <http://www.nao.org.uk/report/tackling-obesity-in-england/>.
- Royston P, Sauerbrei W: *Multivariable model-building: a pragmatic approach to regression analysis based on fractional polynomials for modelling continuous variables.* Chichester: John Wiley & Sons; 2008.
- STATA CORP: *Stata Statistical Software: Release 10.* [10]. TX: StataCorp LP. College Station; 2007.
- Hosmer David W, Stanley L: *Applied Logistic Regression.* John Wiley & Sons; 2000.
- World Health Organization: *GPE Discussion Paper Series: Age Standardization Of Rates: A New Who Standard.* <http://www.who.int/healthinfo/paper31.pdf>.
- Vittinghoff E, Glidden DV, Shiboski SC, McCulloch CE: *Regression methods in biostatistics: linear, logistic, survival, and repeated measures models.* New York: Springer; 2011.
- Wee H-L, Cheung Y-B, Loke W-C, Tan C-B, Chow M-H, Li S-C, et al: **The association of body mass index with health-related quality of life: an exploratory study in a multiethnic asian population.** *Value Health* 2008, **11**:S105–S114.
- Dixon S, Currie C, McEwan P: **Utility values for obesity and preliminary analysis of the health outcomes data repository.** *Future Drugs* 2004, **4**(6):657–65.
- Groessler EJ, Kaplan RM, Barrett-Connor E, Ganiats TG: **Body mass index and quality of well-being in a community of older adults.** *Am J Prev Med* 2004, **26**:126–129.
- Fortin M, Lapointe L, Hudon C, Vanasse A, Ntetu AL, Maltais D: **Multimorbidity and quality of life in primary care: a systematic review.** *Health Qual Life Outcomes* 2004, **2**:51.
- Alonso J, Ferrer M, Gandek B, Ware JE Jr, Aaronson NK, Mosconi P, et al: **Health-related quality of life associated with chronic conditions in eight countries: results from the international quality of life assessment (IQOLA) project.** *Qual Life Res* 2004, **13**:283–298.
- Moussavi S, Chatterji S, Verdes E, Tandon A, Patel V, Ustun B: **Depression, chronic diseases, and decrements in health: results from the world health surveys.** *Lancet* 2007, **370**:851–858.
- Vasiljevic N, Ralevic S, Marinkovic J, Kocev N, Maksimovic M, Milosevic GS, et al: **The assessment of health-related quality of life in relation to the body mass index value in the urban population of Belgrade.** *Health Qual Life Outcomes* 2008, **6**:106.
- Doll HA, Petersen SE, Stewart SL: **Obesity and physical and emotional well-being: associations between body mass index, chronic illness, and the physical and mental components of the SF-36 questionnaire.** *Obes Res* 2000, **8**:160–170.

doi:10.1186/1471-2458-13-1009

Cite this article as: Kearns et al.: Association between body mass index and health-related quality of life, and the impact of self-reported long-term conditions – cross-sectional study from the south Yorkshire cohort dataset. *BMC Public Health* 2013 **13**:1009.