

promoting access to White Rose research papers



Universities of Leeds, Sheffield and York
<http://eprints.whiterose.ac.uk/>

This is the published version of an article in **Biogeosciences**

White Rose Research Online URL for this paper:

<http://eprints.whiterose.ac.uk/id/eprint/75926>

Published article:

Charman, DJ, Hohl, V, Beilman, DW, Blaauw, M, Booth, RK, Yu, ZC, Loisel, J, Brewer, S, Chambers, FM, Christen, JA, Gallego-Sala, A, Harrison, SP, Prentice, IC, Hughes, PDM, Jackson, ST, Korhola, A, Tuittila, E-S, Väliranta, M, Mauquoy, D, Van Bellen, S, Mitchell, FJG, Corish, YMC, Van Der Linden, M, De Vleeschouwer, F, Le Roux, G, Alm, J, Bauer, IE, Garneau, M, Huang, Y, Karofeld, E, Moschen, R, Nichols, JE, Ukonmaanaho, L, Nieminen, TM, MacDonald, GM, Phadtare, NR, Rausch, N, Sillasoo, U, Swindles, GT, Van Geel, B, Vitt, DH and Zhao, Y (2013) *Climate-related changes in peatland carbon accumulation during the last millennium*. *Biogeosciences*, 10 (2). 929 - 944. ISSN 1726-4170

<http://dx.doi.org/10.5194/bg-10-929-2013>



Climate-related changes in peatland carbon accumulation during the last millennium

D. J. Charman¹, D. W. Beilman², M. Blaauw³, R. K. Booth⁴, S. Brewer⁵, F. M. Chambers⁶, J. A. Christen⁷, A. Gallego-Sala^{8,9,10}, S. P. Harrison^{9,11}, P. D. M. Hughes¹², S. T. Jackson¹³, A. Korhola¹⁴, D. Mauquoy¹⁵, F. J. G. Mitchell¹⁶, I. C. Prentice^{11,17}, M. van der Linden¹⁸, F. De Vleeschouwer¹⁹, Z. C. Yu⁴, J. Alm²⁰, I. E. Bauer²¹, Y. M. C. Corish¹⁶, M. Garneau²², V. Hohl¹, Y. Huang²³, E. Karofeld²⁴, G. Le Roux¹⁹, J. Loisel⁴, R. Moschen²⁵, J. E. Nichols²⁶, T. M. Nieminen²⁷, G. M. MacDonald²⁸, N. R. Phadtare²⁹, N. Rausch³⁰, Ü. Sillasoo³¹, G. T. Swindles³², E.-S. Tuittila¹⁴, L. Ukonmaanaho²⁷, M. Väliranta¹⁴, S. van Bellen¹⁵, B. van Geel³³, D. H. Vitt³⁴, and Y. Zhao³⁵

¹Department of Geography, College of Life and Environmental Sciences, University of Exeter, EX4 4RJ, UK

²Department of Geography, University of Hawai‘i Mānoa, Honolulu, HI 96822, USA

³School of Geography, Archaeology and Palaeoecology, Queen’s University Belfast, Belfast BT7 1NN, UK

⁴Department of Earth and Environmental Sciences, Lehigh University, Bethlehem, PA 18015, USA

⁵Department of Geography, University of Utah, Salt Lake City, UT 84112, USA

⁶Centre for Environmental Change and Quaternary Research, SNSS, University of Gloucestershire, Cheltenham, GL50 4AZ, UK

⁷Centro de Investigación en Matemáticas, A.P. 402, 36000 Guanajuato, Gto., Mexico

⁸QUEST, Department of Earth Sciences, University of Bristol, Bristol, BS8 1RJ, UK

⁹School of Geographical Sciences, University of Bristol, Bristol, BS8 1SS, UK

¹⁰Department of Earth and Ecosystem Sciences, Lund Universitet, Sölvegatan 12, 223 62 Lund, Sweden

¹¹Department of Biological Sciences, Macquarie University, North Ryde, NSW 2109, Australia

¹²Geography and Environment, University of Southampton, Highfield, Southampton, Hants, SO17 1BJ, UK

¹³Department of Botany, University of Wyoming, Laramie, WY 82071, USA

¹⁴Department of Environmental Sciences, P.O. Box 65, University of Helsinki, 00014 Helsinki, Finland

¹⁵School of Geosciences, University of Aberdeen, Elphinstone Road, Aberdeen AB24 3UF, UK

¹⁶Botany Department, Trinity College Dublin, Dublin 2, Ireland

¹⁷Grantham Institute for Climate Change and Department of Life Sciences, Imperial College, Silwood Park, Ascot, SL5 7PY, UK

¹⁸BIAX Consult, Hogendijk 134, 1506 AL Zaandam, The Netherlands

¹⁹CNRS and Université de Toulouse, INP, UPS, EcoLab, ENSAT, Avenue de l’Agrobiopole, 31326 Castanet-Tolosan, France

²⁰School of Forest Sciences, University of Eastern Finland, P.O. Box 68, 80101 Joensuu, Finland

²¹Sir Wilfred Grenfell College, Memorial University of Newfoundland, Corner Brook, Newfoundland A2H 6P9, Canada

²²Département de Géographie and GEOTOP, Université du Québec à Montréal, Montréal, Quebec, H3C 3P8, Canada

²³Department of Geological Sciences, Brown University, Providence, RI 02912, USA

²⁴University of Tartu, Institute of Ecology and Earth Sciences, Lai 40, Tartu 51005, Estonia

²⁵Institute of Bio- and Geosciences 3: Agrosphere, Research Centre Juelich (Forschungszentrum Jülich), Jülich 52428, Germany

²⁶NASA Goddard Institute for Space Studies, 2880 Broadway, New York, NY 10025, USA, and Lamont-Doherty Earth Observatory at Columbia University, Palisades, NY 10964, USA

²⁷The Finnish Forest Research Institute, P.O. Box 18, 01301 Vantaa, Finland

²⁸Institute of the Environment and Sustainability, and Department of Geography, UCLA, Los Angeles, CA 90095, USA

²⁹Wadia Institute of Himalayan Geology, Dehra Dun, India

³⁰Institute of Environmental Geochemistry, University of Heidelberg, Im Neuenheimer Feld 236, 69120 Heidelberg, Germany

³¹Institute of Ecology, Tallinn University, Uus-Sadama 5, Tallinn 10120, Estonia

³²School of Geography, University of Leeds, Leeds, LS2 9JT, UK

³³Institute for Biodiversity and Ecosystem Dynamics, P.O. Box 94248 1090 GE Amsterdam, The Netherlands

³⁴Department of Plant Biology, Southern Illinois University, Carbondale, IL 62901, USA

³⁵Institute of Geographic Science and Natural Resources Research, Chinese Academy of Sciences, Beijing 100101, China

Correspondence to: D. J. Charman (d.j.charman@exeter.ac.uk)

Received: 2 October 2012 – Published in Biogeosciences Discuss.: 17 October 2012

Revised: 11 January 2013 – Accepted: 11 January 2013 – Published: 8 February 2013

Abstract. Peatlands are a major terrestrial carbon store and a persistent natural carbon sink during the Holocene, but there is considerable uncertainty over the fate of peatland carbon in a changing climate. It is generally assumed that higher temperatures will increase peat decay, causing a positive feedback to climate warming and contributing to the global positive carbon cycle feedback. Here we use a new extensive database of peat profiles across northern high latitudes to examine spatial and temporal patterns of carbon accumulation over the past millennium. Opposite to expectations, our results indicate a small negative carbon cycle feedback from past changes in the long-term accumulation rates of northern peatlands. Total carbon accumulated over the last 1000 yr is linearly related to contemporary growing season length and photosynthetically active radiation, suggesting that variability in net primary productivity is more important than decomposition in determining long-term carbon accumulation. Furthermore, northern peatland carbon sequestration rate declined over the climate transition from the Medieval Climate Anomaly (MCA) to the Little Ice Age (LIA), probably because of lower LIA temperatures combined with increased cloudiness suppressing net primary productivity. Other factors including changing moisture status, peatland distribution, fire, nitrogen deposition, permafrost thaw and methane emissions will also influence future peatland carbon cycle feedbacks, but our data suggest that the carbon sequestration rate could increase over many areas of northern peatlands in a warmer future.

1 Introduction

Peatlands contain around 600 gigatonnes of carbon (GtC) that has accumulated since the last glacial maximum in northern mid–high latitudes, tropical regions and temperate areas of the Southern Hemisphere, and the steady accumulation of carbon has been a small but persistent sink for atmospheric CO₂ throughout the Holocene (Yu, 2011). The relationship between climate change and the rate of carbon sequestration is important for understanding the past and future global carbon cycle, and it has generally been assumed that

because temperature drives increasing decay (Ise et al., 2008; Dorrepaal et al., 2009), peatlands could be part of the positive feedback from the global carbon cycle (Friedlingstein et al., 2006). A key objective in improving understanding of the global carbon cycle in climate models is to be able to simulate past observed atmospheric CO₂ changes.

There is growing interest in the last millennium as a climate-modelling target, and especially in the assessment of the sensitivity of the global carbon cycle to climate warming (Abe-Ouchi and Harrison, 2009; Jungclaus et al., 2010). In the Northern Hemisphere, the transition from the generally warmer Medieval Climate Anomaly (MCA) to the cooler Little Ice Age (LIA) (Mann et al., 2008, 2009; Jansen et al., 2007) was associated with a ca. 7–10 ppmv decline in atmospheric CO₂ concentration (Ahn et al., 2012). This pattern supports the existence of a positive global climate–carbon cycle feedback, as suggested by coupled climate–carbon cycle models (Friedlingstein et al., 2006; Denman et al., 2007). However, estimates of the magnitude of the climate sensitivity of the global carbon cycle based on data from the last millennium vary from 1.7–21.4 ppm CO₂ K⁻¹ (Frank et al., 2010) to 40–60 ppm CO₂ K⁻¹ (Cox and Jones, 2008). Carbon cycle models also vary greatly in their assessment of this feedback (Friedlingstein et al., 2006), although recent estimates (Jungclaus et al., 2010) suggest sensitivity within the lower end of this range (3.2–12 ppm CO₂ K⁻¹). The causes of the reduction in CO₂ concentrations during the MCA to LIA transition are poorly known, but reduced soil heterotrophic respiration is assumed to be important (Jungclaus et al., 2010; Pongratz et al., 2009). However, the models do not specifically take into account possible climate-related variations in the rate of peatland carbon sequestration.

Peatlands have sequestered and exchanged atmospheric carbon over millennia (MacDonald et al., 2006; Frolking and Roulet, 2007), with the largest store in northern extratropical peatlands, an estimated 545 GtC (Yu et al., 2010). The annual uptake of CO₂ by peatlands, previously estimated as 0.076 GtC yr⁻¹ (Gorham, 1991) or 0.088 GtC yr⁻¹ (Yu, 2011), without considering long-term decay (see below), is a small but temporally persistent component of land carbon uptake. This is equivalent to 36 ppm atmospheric CO₂ over 1000 yr, based on a simple conversion from change in carbon pool to atmospheric CO₂ of 1 GtC = 2.123 ppm. However,

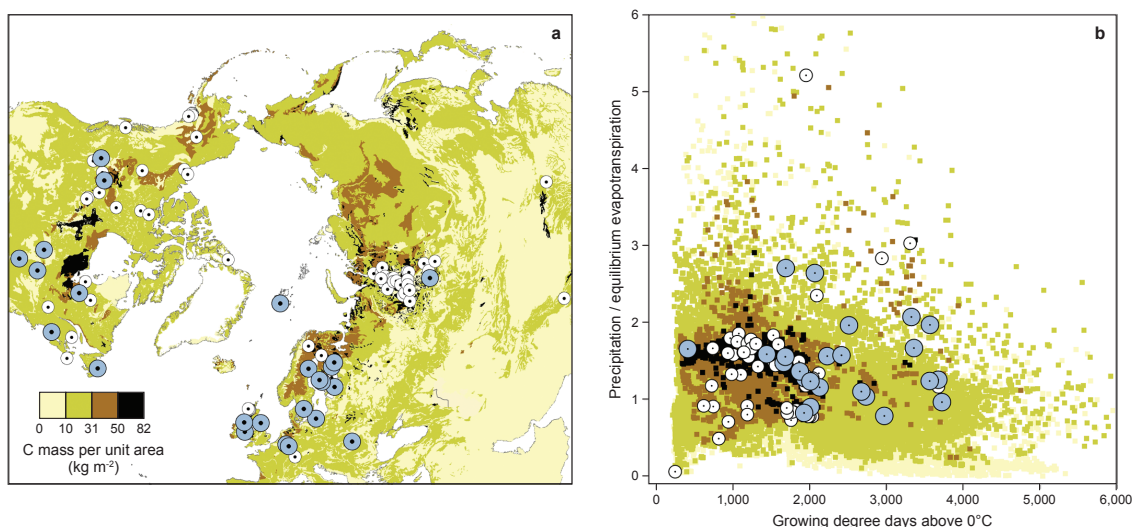


Fig. 1. Distribution of sites in geographic and climate space, overlain on soil carbon storage. Points show high-resolution peat records (large blue circles) used for calculating temporal variation in carbon accumulation rates and low-resolution peat records (small white circles) used for estimates of total millennial carbon. **(a)** The soil carbon density in the top 1 m mapped from 10-min IGBP soil data; **(b)** climate space (defined by growing degree days and moisture balance) of soil carbon density in the same classes as in panel a, at $0.5 \times 0.5^\circ$ grid cells for all land north of 40° N. Peatlands generally occur in the areas of $> 31 \text{ kg C m}^{-2}$ (brown and black).

over millennial timescales, carbon uptake of this magnitude would be compensated by ocean outgassing processes as a result of reduced CO_2 in the atmosphere and reduction in air–sea CO_2 partial pressure, so that the actual effect on the atmosphere is only 20–35 % of this total over periods of 200–2000 yr (Archer et al., 2009), or 7–12 ppm atmospheric CO_2 over a 1000 yr period. Variations in the size of the peatland sink could therefore have a significant cumulative effect on global atmospheric CO_2 concentrations over the last millennium, of the same order of magnitude as the observed changes.

In this study, we compiled peat core data from northern peatlands to estimate changes in carbon accumulation over the last millennium and to explore the spatial relationship between climate and the total size of the carbon sink accumulated over this period. Further analysis on a subset of well-dated cores allowed an analysis of temporal variation in carbon accumulation in relations to the MCA–LIA climate changes estimated from palaeoclimate records. We use these data to help understand the relationships between climate and peatland carbon accumulation and to assess the direction and strength of the peatland carbon cycle feedback.

2 Methods

2.1 Site selection and carbon measurement

A list of Northern Hemisphere, extratropical peatland profiles with published and unpublished carbon accumulation

data was compiled (Tables 1 and 2) for sites that met the following criteria:

- at least 3 evenly spaced dates (including ^{210}Pb , tephra, spheroidal carbonaceous particles, pollen markers or ^{14}C (pre- or postdating the period of nuclear bomb testing), and the uncut peat surface) and spanning the last ca. 1000 yr. Most of the sites had more than 5 dates (Table 2), but we also rejected some sites where a satisfactory age–depth model could not be produced, because of age reversals or other problems; and
 - contiguous bulk density measurements at $< 5 \text{ cm}$ resolution.
- Application of these criteria resulted in the selection of 24 sites that were used in subsequent analyses of the temporal changes in carbon accumulation through the last millennium (Table 2). A second tier of sites (Table 1) was used for the millennium carbon inventory analysis against climate indices. These sites did not meet criteria (a) and (b), but did meet the following criteria:
- a basic age–depth model for the last millennium; and
 - contiguous bulk density measurements but not necessarily at high resolution.

A total of 90 sites met these less stringent criteria and were used in the climate–carbon inventory analyses (Tables 1 and 2). The sites in both data sets are widely distributed geographically and broadly representative of the climate space occupied by northern peatlands (Fig. 1).

Table 1. Characteristics of the low-resolution sites used in the analyses.

No.	Site name	Latitude	Longitude	Peatland type	Contributor	Source reference
1	E115	67.8095	75.4346	Ombrotrophic	D. Beilman	Beilman et al. (2009)
2	E110	66.4698	76.9943	Ombrotrophic	D. Beilman	Beilman et al. (2009)
3	E113	66.4497	79.3234	Ombrotrophic	D. Beilman	Beilman et al. (2009)
4	D122	65.5831	73.0058	Ombrotrophic	D. Beilman	Beilman et al. (2009)
5	E119	65.4998	75.5025	Ombrotrophic	D. Beilman	Beilman et al. (2009)
6	D127	64.3068	70.2948	Ombrotrophic	D. Beilman	Beilman et al. (2009)
7	G136	64.1476	75.3611	Ombrotrophic	D. Beilman	Beilman et al. (2009)
8	G137	63.7504	75.7662	Ombrotrophic	D. Beilman	Beilman et al. (2009)
9	N015	63.6501	74.2693	Ombrotrophic	D. Beilman	Beilman et al. (2009)
10	N001	63.1611	74.8233	Ombrotrophic	D. Beilman	Beilman et al. (2009)
11	S009	62.1229	73.8412	Ombrotrophic	D. Beilman	Beilman et al. (2009)
12	V034	61.4675	79.4601	Ombrotrophic	D. Beilman	Beilman et al. (2009)
13	V039	61.0895	79.3806	Ombrotrophic	D. Beilman	Beilman et al. (2009)
14	SIB02	61.0553	70.0588	Ombrotrophic	D. Beilman	Beilman et al. (2009)
15	V026	61.0286	76.4686	Ombrotrophic	D. Beilman	Beilman et al. (2009)
16	S022	60.8401	71.2558	Ombrotrophic	D. Beilman	Beilman et al. (2009)
17	V038	60.8039	74.5416	Ombrotrophic	D. Beilman	Beilman et al. (2009)
18	SIB01	59.3601	68.9849	Ombrotrophic	D. Beilman	Beilman et al. (2009)
19	SIB06	58.4358	83.4343	Ombrotrophic	D. Beilman	Beilman et al. (2009)
20	SIB05	57.3541	81.1647	Ombrotrophic	D. Beilman	Beilman et al. (2009)
21	SIB03	56.3552	79.0689	Ombrotrophic	D. Beilman	Beilman et al. (2009)
22	C_site_01	60.167	72.8330	Ombrotrophic	Z. C. Yu	Yu et al. (2009)
23	C_site_02	60.167	72.8330	Ombrotrophic	Z. C. Yu	Yu et al. (2009)
24	C_site_03	56.833	78.4170	Ombrotrophic	Z. C. Yu	Yu et al. (2009)
25	C_site_10	54.15	-130.2500	Ombrotrophic	Z. C. Yu	Yu et al. (2009)
26	C_site_13	55.017	-114.1500	Ombrotrophic	Z. C. Yu	Yu et al. (2009)
27	C_site_17	55.85	-107.6830	Ombrotrophic	Z. C. Yu	Yu et al. (2009)
28	C_site_20	59.883	-104.2000	Ombrotrophic	Z. C. Yu	Yu et al. (2009)
29	C_site_21	45.684	-74.0470	Ombrotrophic	Z. C. Yu	Yu et al. (2009)
30	C_site_23	47.933	-64.5000	Ombrotrophic	Z. C. Yu	Yu et al. (2009)
31	C_site_24	45.2	-60.2670	Ombrotrophic	Z. C. Yu	Yu et al. (2009)
32	C_site_25	57.522	-5.1600	Ombrotrophic	Z. C. Yu	Yu et al. (2009)
33	C_site_26	57.56	-5.3770	Ombrotrophic	Z. C. Yu	Yu et al. (2009)
34	C_site_27	57.687	-5.6870	Ombrotrophic	Z. C. Yu	Yu et al. (2009)
35	C_site_28	68.4	23.5500	Ombrotrophic	Z. C. Yu	Yu et al. (2009)
36	C_site_30	60.817	26.9500	Ombrotrophic	Z. C. Yu	Yu et al. (2009)
37	Kohlhütten Moor	47.9269	8.1844	Ombrotrophic	G. Le Roux	Le Roux et al. (2005)
38	P131	66.1664	73.9889	Minerotrophic	D. Beilman	Beilman et al. (2009)
39	C_site_04	56.333	84.5830	Minerotrophic	Z. C. Yu	Yu et al. (2009)
40	C_site_05	60.446	-151.2470	Minerotrophic	Z. C. Yu	Yu et al. (2009)
41	C_site_06	60.641	-151.0800	Minerotrophic	Z. C. Yu	Yu et al. (2009)
42	C_site_07	60.416	-150.9020	Minerotrophic	Z. C. Yu	Yu et al. (2009)
43	C_site_08	60.784	-150.8190	Minerotrophic	Z. C. Yu	Yu et al. (2009)
44	C_site_09	64.875	-147.7670	Minerotrophic	Z. C. Yu	Yu et al. (2009)
45	C_site_11	53.583	-118.0170	Minerotrophic	Z. C. Yu	Yu et al. (2009)
46	C_site_12	52.45	-116.2000	Minerotrophic	Z. C. Yu	Yu et al. (2009)
47	C_site_14	61.8	-121.4000	Minerotrophic	Z. C. Yu	Yu et al. (2009)
48	C_site_15	68.288	-133.2500	Minerotrophic	Z. C. Yu	Yu et al. (2009)
49	C_site_16	69.493	-132.6720	Minerotrophic	Z. C. Yu	Yu et al. (2009)
50	C_site_18	64.713	-105.5790	Minerotrophic	Z. C. Yu	Yu et al. (2009)
51	C_site_19	66.451	-104.8350	Minerotrophic	Z. C. Yu	Yu et al. (2009)
52	C_site_22	82.333	-68.2500	Minerotrophic	Z. C. Yu	Yu et al. (2009)
53	C_site_29	68.4	23.5500	Minerotrophic	Z. C. Yu	Yu et al. (2009)
54	C_site_31	65.65	27.3170	Minerotrophic	Z. C. Yu	Yu et al. (2009)
55	C_site_32	65.65	27.3170	Minerotrophic	Z. C. Yu	Yu et al. (2009)
56	C_site_33	65.65	27.3170	Minerotrophic	Z. C. Yu	Yu et al. (2009)

Table 1. Continued.

No.	Site name	Latitude	Longitude	Peatland type	Contributor	Source reference
57	Old Black Spruce Fen	53.9983	−105.1153	Minerotrophic	I. Bauer	Bauer et al. (2009)
58	Sandhill Fen	53.8261	−104.6250	Minerotrophic	I. Bauer	Bauer et al. (2009)
59	Dhakuri	30.0500	79.9333	Minerotrophic	N. R. Phadtare	Unpublished data
60	Aeroporto 4	54.1041	−72.5167	Minerotrophic	M. Garneau	Unpublished data
61	Aeroporto 5	54.1041	−72.5167	Minerotrophic	M. Garneau	Unpublished data
62	Lac Le Caron Lateral Core4	52.2945	−75.8408	Ombrotrophic	S. van Bellen	van Bellen et al. (2011)
63	M179	60.5875	−149.5347	Minerotrophic	Z. C. Yu	Unpublished data
64	ZB08-S4	33.0954	102.6650	Minerotrophic	Y. Zhao	Unpublished data
65	OURS4 Peatland	54.0597	−72.4602	Minerotrophic	M. Garneau	Unpublished data
66	LG1 Peatland	54.0597	−78.4602	Minerotrophic	M. Garneau	Unpublished data

Bulk density was measured on carefully cut fresh or frozen material using freeze drying or oven drying of samples of known volume. Sample sizes varied depending on the sampling method and core size, and sample resolution varied from 0.5 to 5 cm³ (Table 2). In all cases samples were large enough to accurately measure bulk density and were taken contiguously to enable reliable estimates of dry mass accumulation over time. Carbon density was derived from bulk density multiplied by the carbon content for each sample. Where carbon data were not available, we assumed that 50 % of the organic fraction (measured by standard loss-on-ignition analysis at 500 °C) was organic carbon. A carbon value of approximately 50 % is routinely used for peat (Gorham, 1991; Vitt et al., 2000) and is reasonable compared to the mean carbon content of the nine sites for which we have measured values in this study (46.6 ± 0.33 %), and other studies in western Canada (51.8 %; Yu et al., 2009) and West Siberia (50.7–56.3 %; Beilman et al., 2009).

To provide an assessment of hydrological differences among the peatlands in our analyses, we classified sites as either bogs or fens. Although differences between these two peatland types are related to the relative influence of different water sources (i.e. groundwater, surface water, precipitation), thresholds used for distinction between the two types are regionally varied. For our site classification, we used a relatively conservative approach, including only *Sphagnum*-dominated systems that lacked vegetative or morphological evidence of minerotrophic conditions in our “ombrotrophic” category. Sites characterised as ombrotrophic included raised bogs, blanket bogs, and the extensive bog systems of western Siberia (Kremenetski et al., 2003).

2.2 Chronology and age modelling

All sites were ¹⁴C dated using selected aboveground plant remains, except for site 68 where bulk peat was ¹⁴C dated. We recalibrated all the dates from the original studies. For modern (post-AD 1950) ¹⁴C dates, the NH1 postbomb calibration curve was used (Hua and Barbetti, 2004). Remaining dates were calibrated using IntCal09 (Reimer et al., 2009). Age

models for the temporal analysis were based on the program “Bacon”, a flexible Bayesian age–depth modelling approach that uses prior information on plausible accumulation rates and their variability and autocorrelation over time (Blaauw and Christen, 2005, 2011). Peat cores were divided into contiguous 2 cm segments, and linear accumulation rates were calculated for all individual segments sequentially down the core. Age models were developed based on several million iterations, followed by thinning to remove any autocorrelation between individual model runs, yielding ca. 5000–8000 iterations for each site (Fig. 2a).

2.3 Spatial analysis of carbon accumulation

Total carbon accumulation over the 1000 yr was estimated based on a data set of the 90 radiocarbon-dated peat profiles (Tables 1 and 2). The post-1000 yr carbon pool is the difference between total carbon additions from photosynthesis and cumulative respirative carbon release over this interval, reflecting carbon sequestration at a site. We analysed the relationship between total carbon accumulation over the last 1000 yr and climate parameters using a 0.5° grid, derived from the CLIMATE 2.2 data (Kaplan et al., 2003). Climate parameters included growing degree days above 0 °C (GDD0), cumulative photosynthetically active radiation during the growing season (PAR0), PAR over the growing season, growing season length (days) and the moisture index P/Eq , where P is annual precipitation and Eq is annually integrated equilibrium evapotranspiration calculated from daily net radiation and temperature (Prentice et al., 1993). PAR was calculated from latitude and sunshine hours (Prentice et al., 1993; Harrison et al., 2010).

2.4 Temporal variation in carbon accumulation

A composite carbon accumulation curve was constructed based on the subset of 24 well-dated, high-resolution sites with continuous records for the past 1000 yr (Table 2). The Bayesian age–depth models allowed chronological uncertainty to be included in carbon accumulation curves (Fig. 2b).

Table 2. Characteristics of the high-resolution sites used in the analyses. BDs – bulk density sample size; BDI – bulk density increment depth; dates (other): Pb – lead 210, S – spherical carbonaceous particles, T – tephra, A – Ambrosia pollen rise; scaling for carbon estimates based on C (carbon analyses), LOI (loss on ignition), or 50 % of dry mass.

No.	Site name	Lat.	Long.	Alt. (m)	Peatland type	BDs (cm ³)	BDI (cm)	¹⁴ C dates	Dates (other)	C scaling	Main investigator	Site code	Site reference
67	Ballyduff	53.0861	-7.9930	60	Ombrotrophic	45–117	1	12	S	C	F. J. G. Mitchell	ir_ballyd	Unpublished data
68	Upper Pinto Fen	53.5833	-118.0167	1310	Minerotrophic	0.8	1	4		LOI	Z. C. Yu	ca-uppin	Yu et al. (2003)
69	Mäntikjärve Bog	58.8753	26.2556	79	Ombrotrophic	200–250	5	10	Pb	50 %	E. Karofeld	es-manik	Sillasoo et al. (2007)
70	Misten	50.5631	6.1642	620	Ombrotrophic	7–10	1	11	Pb	LOI	F. De Vleeschouwer	be-misten	De Vleeschouwer et al. (2010, 2012)
71	Slowirskie Biora	54.3646	16.4902	30	Ombrotrophic	7	1	7	Pb	LOI	F. De Vleeschouwer	po_slowbl	De Vleeschouwer et al. (2009)
72	Walton Moss	54.9833	-2.6670	109	Ombrotrophic	2	1	30		C	D. Mauguoy	en-walton	Mauguoy et al. (2002)
73	Ditres Maar	50.1228	6.8722	455	Ombrotrophic	3–4	2	5		50 %	R. Moschen	de-durtra	Moschen et al. (2009)
74	Irwin Smith Bog	45.0319	-83.6181	223	Ombrotrophic	3	1	3	A	50 %	R. Booth	us-irwsmi	Unpublished data
75	Sidnaw Bog	46.5618	-88.7824	400	Minerotrophic	3	1	5	Pb, A	50 %	R. Booth	us-sidnaw	Unpublished data
76	Pinhook Bog	41.6152	-86.8468	245	Minerotrophic	3	1	5	A	50 %	R. Booth	us-pinhook	Unpublished data
77	Colesdalen	78.0925	14.9787	8	Minerotrophic	1.2	0.5	9		50 %	D. Belman	no-colesd	Unpublished data
78	Fenwesteio	47.6670	24.0330	1340	Ombrotrophic	4.5	1	16		50 %	D. Charman	ro-fenwe	Unpublished data
79	Saxnäs Mosse	56.8558	13.4610	161	Ombrotrophic	10.5	1	25		C	M. van der Linden	se-saxnas	van der Linden (2006)
80	Dead Island Bog	54.8875	-6.5491	41	Ombrotrophic	20	1	0	S, T(5)	50 %	G. Swindles	nl-deasis	Swindles et al. (2010)
81	Sib-04	56.8039	78.7369	131	Ombrotrophic	2–3	1	5		LOI	D. Belman	SIB04	Belman et al. (2009)
82	The Great Heath	44.7013	-67.8092	75	Ombrotrophic	3.5	1	8		50 %	J. Nichols	us-greath	Unpublished data
83	Kontolanranta	60.7830	22.7830	87	Ombrotrophic	125–320	5	18		C	M. Väitrinta	fi-kontol	Väitrinta et al. (2007)
84	Lappynan	64.1647	19.5830	295	Ombrotrophic	10.5	1	20		C	M. van der Linden	se-lappyn	van der Linden et al. (2008)
85	Outokumpu	62.6667	28.8500	108	Ombrotrophic	3	1	4	Pb	C	N. Rausch	fi-outoku	Rausch et al. (2005), Ukonmaanaho et al. (2006)
86	Lac Le Caron Central	52.2897	-75.4331	254	Ombrotrophic	1	1	3		LOI	S. van Belten	ca-llecn	Ukonmaanaho et al. (2006)
87	Hietajärvi	63.1500	30.6667	168	Ombrotrophic	3	1	3	Pb	C	N. Rausch	fi-hietaj	van Belten et al. (2011) Rausch et al. (2005), Ukonmaanaho et al. (2006)
88	Marriana Lake	56.0167	-111.9333	700	Ombrotrophic	0.8	1	6		LOI	Z. C. Yu	ca-marian	Ukonmaanaho et al. (2006)
89	Harjavala	61.3500	22.1833	40	Ombrotrophic	3	1	4	Pb	C	N. Rausch	fi-harjav	Rausch et al. (2005), Ukonmaanaho et al. (2006)
90	Nordan's Pond bog	49.1500	-53.5830	60	Ombrotrophic	5	2	2	Pb	50 %	P. Hughes	ca-nordan	Hughes et al. (2006)

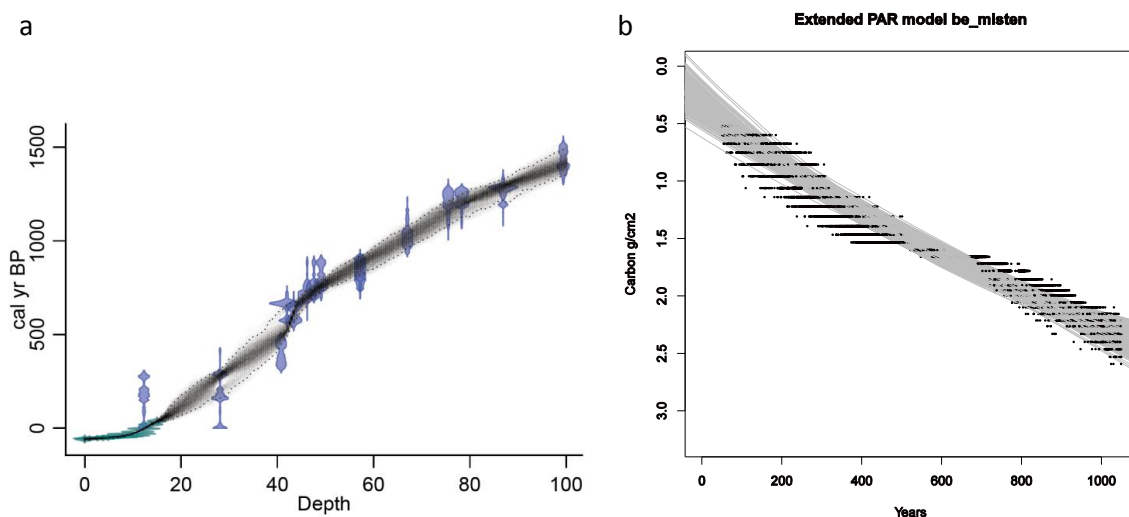


Fig. 2. Age–depth and carbon accumulation estimates for individual profiles. The example shown here is Misten Bog, Belgium. **(a)** An age–depth plot showing the calibrated ages (blue shapes) and age–depth model (grey-scale graph) (Blaauw and Christen, 2005, 2011). **(b)** Carbon accumulation derived from age–depth models, and bulk density and C measurements. Curves are fitted to each of 10 000 possible age models based on Bayesian analysis. Points represent individual samples on different age models, and grey lines are fitted curves for individual models. Only curves fitted incorporating long-term decay and ecosystem maturity (Yu et al., 2003) are shown here.

All age depth models were converted to carbon accumulation using bulk density and carbon or LOI measurements.

We derived different estimates of variability in carbon accumulation rates based on different assumptions about autogenic processes of long-term decay (Clymo, 1984) and ecosystem maturity (Yu et al., 2003). Carbon accumulation rates calculated from our age–depth models and carbon density do not take account of autogenic peat accumulation processes, most importantly the effect of long-term decay. Dead plant material decays rapidly in the surface layers, as the most labile organic matter is broken down quickly by microbial activity. Decomposition rates are much slower (though not zero) in the permanently saturated zone, which contains more recalcitrant organic matter (Clymo, 1984; Belyea and Baird, 2006). If productivity and decay are constant, measured apparent accumulation rates will be higher for more recent peat, and the long-term carbon storage will appear to increase. We accounted for this ecological process by fitting decay curves to each profile (Clymo, 1984). We also tested the effect of “ecosystem maturity”, that is the slowing of peat growth under stable conditions because of autogenic limits on the height of the peat surface (Yu et al., 2003). We excluded carbon accumulation changes in the uppermost peat (conservatively approximated here as peat formed after 1850) where relatively rapid aerobic decay is still taking place. We used AD 1850 for this because this is likely outside of the aerobic decay zone for all cores.

The changes in accumulation rates for each site were expressed as differences between observed accumulation and those derived from three models: (1) linear decay model (i.e. no autogenic processes); (2) the Clymo model, which

includes long-term decay only (Clymo, 1984):

$$M = \left(\frac{P_c}{a_c} \right) (1 - e^{-a_c t}), \quad (1)$$

where M is the accumulated carbon, P_c is the peat added to the catotelm each year (g C cm^{-2}), a_c is the catotelm decay constant and t is time; and (3) the extended peat accumulation rate (ExtPAR) model (Yu et al., 2003), which includes long-term decay and ecosystem maturity:

$$M = \left(\frac{P_c}{a_c - b_c} \right) (e^{-b_c t} - e^{-a_c t}), \quad (2)$$

where the parameters are the same as those listed above, with the addition of b_c , a coefficient that allows the accumulation rate to be modified. Each curve fitting exercise produces estimated values for P_c , a_c and b_c . There are several other more complex models that could be applied to account for long-term decay, but it is often difficult or impossible to determine the most appropriate one, given the subtle variations in the carbon accumulation curves (Belyea and Baird, 2006). Our intention here is to test whether observed variations in the raw carbon accumulation data could be explained by long-term decay and ecosystem maturity.

Decay models were fit individually to each carbon accumulation curve derived from the Bacon routine. For the linear model, the fitting was carried out using ordinary least-squares. For the Clymo and ExtPAR models, optimization was carried out using an iterative orthogonal sampling technique that samples the entire parameter space, then uses a least squares fit to obtain a subset of the parameter space. This subset is then sampled in the next iteration to produce

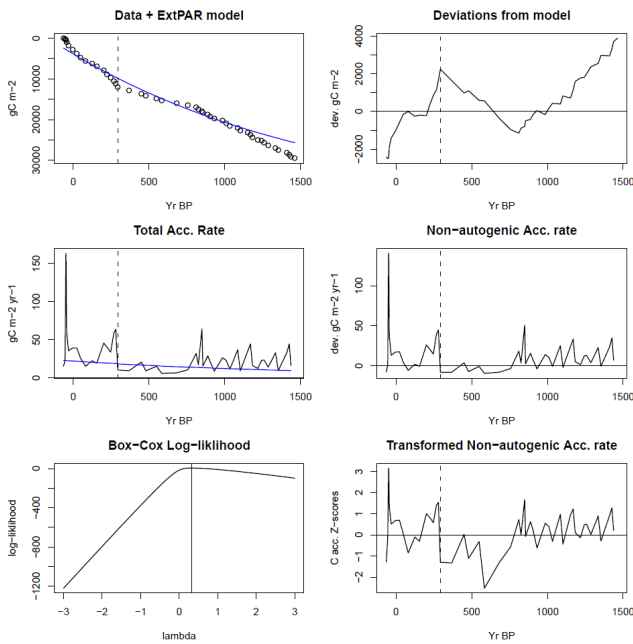


Fig. 3. Steps involved in deriving a non-autogenic accumulation curve from a single age profile after fitting of the peat accumulation model with long-term decay and ecosystem maturity (Yu et al., 2003). See text for details.

an increasingly well defined parameter space. All following analyses were applied to results from all three versions (Fig. 3).

The number of age models varied by over an order of magnitude between sites (from ca. 2300 to ca. 44 000). To avoid biases towards sites with a higher number of age models, a single age model was randomly sampled from each site. The accumulation rates were interpolated onto a regular time step by taking the median value in a moving window (half-window of 25 yr) with a step of 10 yr to avoid bias toward sites with higher sampling resolution. Finally, a time series of accumulation rates was calculated as the median of the 24 interpolated accumulation rates (one per site). This was repeated 10 000 times to provide a fair sampling of the available age models, and gave a matrix of median time series on a regular time step. Finally, this matrix was used to calculate the median and percentile values of the accumulation rates for each time.

The effect of this Monte Carlo resampling of the possible age models (and associated accumulation rate curves) is to give greater weight to the sites with the best-constrained chronologies. In each iteration of the resampling, we took one age model and set of accumulation rates from each site. Sites that are well-constrained will provide age models that are similar in each iteration, and poorly constrained sites will provide age models that are widely different. The end result of this is that well-constrained sites will effectively have a greater weight in the overall composite.

To avoid any bias toward sites with generally very high accumulation rates, a second composite was made, based on transformed values. This followed the methodology used previously for charcoal data (Marlon et al., 2008): (1) min-max transformation of the original accumulation rate time series; (2) Box–Cox transformation to normalise the time series; and (3) z-score calculation. The composite z-scores were estimated using the same procedure as for compilation of the untransformed values described above. The final composite curves are shown in Fig. 4.

3 Results and discussion

3.1 Spatial relationships between carbon accumulation and climate

Warming would be expected to increase net primary productivity (NPP) in high-latitude ecosystems because of increased growing season length. The growing season for northern peatlands is appropriately defined as the period of the year with air temperatures above freezing, because bryophytes begin photosynthesis at this threshold, and are the dominant peat-former in most of our sites. PAR, determined by latitude and cloudiness, is the driver of photosynthetic carbon fixation and may also be an important control on NPP. However, higher temperatures could also increase peat decomposition rates through accelerated microbial activity (Ise et al., 2008; Dorrepaal et al., 2009).

Linear regression of total carbon accumulated over the last 1000 yr (C) against PAR₀ yielded the strongest relationship:

$$C = 0.0055 \text{ PAR}_0 - 3.82, \quad (3)$$

with an R^2 of 0.33 (Fig. 5a). In single-predictor regressions, C showed a weaker relationship with GDD0 ($R^2 = 0.13$, Fig. 5b) and no significant relationship with P/Eq ($P = 0.19$, Fig. 5c). Residuals from Eq. (3) showed no systematic relation to either GDD0 or P/Eq and inclusion of these additional predictors in a multiple linear regression yielded non-significant regression coefficients. The correlation between PAR₀ and GDD0 is high (0.83), owing to the growing season length that is shared by both variables. We checked the influence of two apparent outliers with higher PAR₀ values on our conclusions. These are the two southernmost sites from Dhakuri (India) and Pinhook (USA). Removing these two sites does not affect the significance of the relationship between PAR₀ and 1 ka C ($P < 0.0001$) but changes the R^2 values from 0.33 to 0.24 and slightly changes the slope from 0.0055 to 0.0049. Thus, it still explains more of the variation than GDD0. The influence of these two sites is not insignificant, but removing them does not impact our main conclusions concerning PAR. Without the two “outliers” total C still shows a positive significant relationship ($P < 0.001$) with GDD0 but with a change in R^2 from 0.18 to 0.13 and a

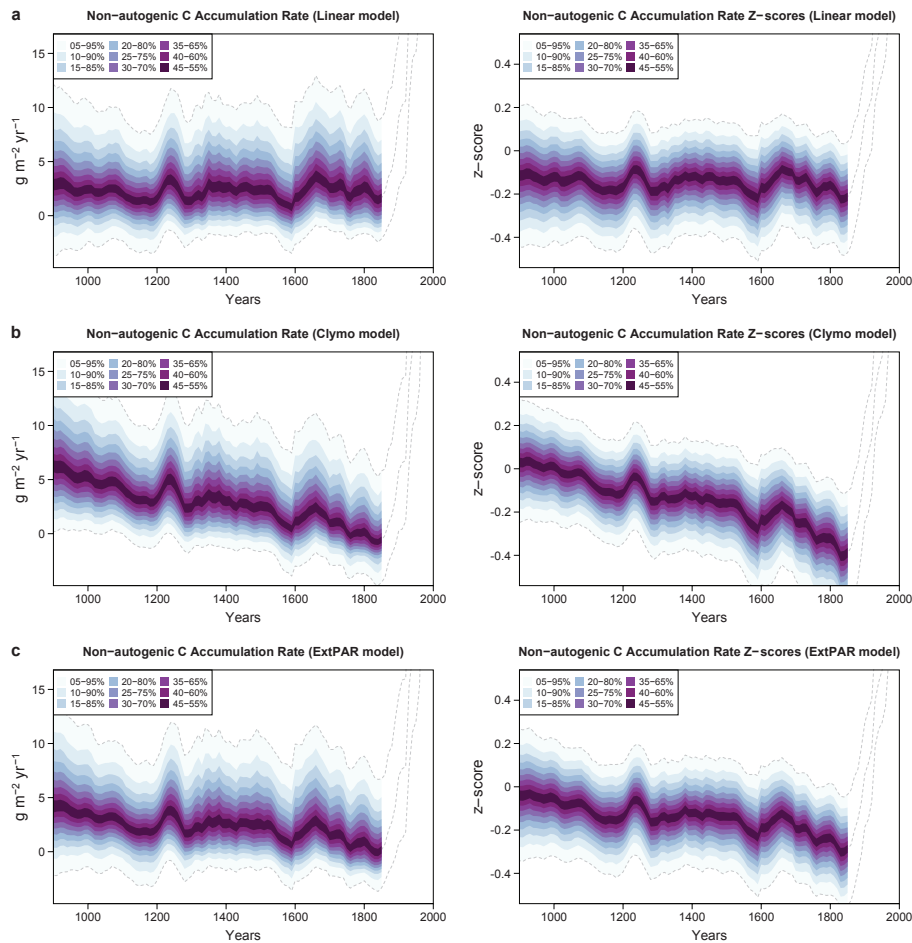


Fig. 4. Composite carbon accumulation curves for the last millennium based on different assumptions concerning autogenic processes. Left panels show untransformed data, right panels show z-scores. (a) Linear accumulation without considering autogenic processes, (b) with long-term decay rates, and (c) including long-term decay and ecosystem maturity (left panel also shown in Fig. 6). The data after AD 1850 are shown only in outline because the apparent upturn in carbon accumulation is due to incomplete decay of recently accumulated organic materials.

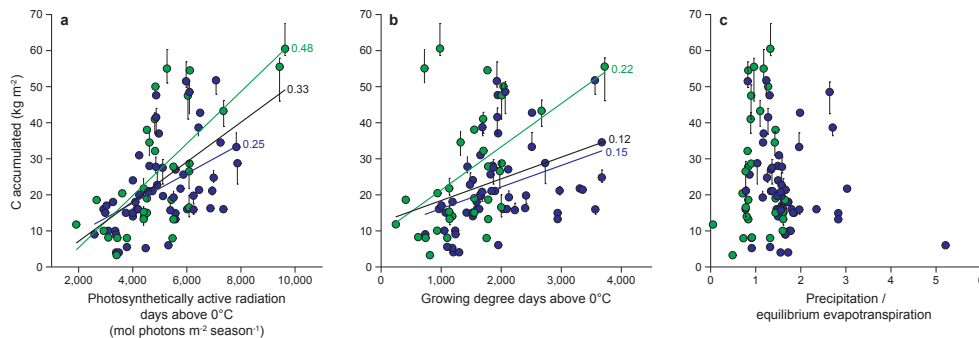


Fig. 5. Relationships between climate variables and peat carbon accumulation. The total carbon accumulated over the last 1000 yr (1 ka) at each site compared to PAR0 (a), GDD0 (b) and the ratio of precipitation to equilibrium evapotranspiration (c). Bog (ombrotrophic) and fen (minerotrophic) sites (see Tables 1 and 2) are shown in blue and green, respectively, and separate regressions (R^2 values are shown) have been calculated for each site type, with a black regression line for the merged data sets. Vertical error bars represent chronological uncertainties (2σ) in estimating AD 1000 in each profile ($n = 90$).

reduction in slope from 0.0086 to 0.0073. Again, this would not change our main conclusions.

Our analyses thus show that total carbon accumulation over the past 1000 yr is linearly related to contemporary PAR integrated over the growing season (PAR0) (Fig. 5a) and that this relationship is stronger than that with growing season warmth expressed as accumulated temperature (GDD0, growing degree days above zero) (Fig. 5b). The implied effect of a warmer climate is to increase NPP to a greater extent than decomposition, suggesting a negative climate feedback in peatlands. Because no relationship was found between total carbon accumulation and moisture, we infer that although an adequate moisture supply is necessary for the presence of peat, above a threshold of moisture availability the effect on carbon accumulation is secondary relative to growing season temperature and light conditions, at least for millennial averages over large spatial scales. Some of the unexplained variability in carbon accumulation probably reflects local hydrological factors, not captured by the large-scale moisture index, as well as other local controls. Peatlands do not occur, for example, in climatically suitable locations with steep slopes. Local topographic and drainage features, as well as internal dynamics, create heterogeneity in peat accumulation that is not represented by our data. Furthermore, our sampling is necessarily biased toward peatlands that exist today, and we therefore cannot establish the threshold for cessation of carbon accumulation resulting from a reduction in moisture balance. Despite these caveats, it is clear that the changes in moisture balance are unlikely to be an important control on peat accumulation during the recent past because of the complete lack of any relationship with macroclimate. If moisture does not play a role in determining peat accumulation rates, this implies that the net balance between NPP and decay is similar under varying hydrological conditions. In dry sites high decay rates must be offset by high NPP, and similarly, wetter sites must have low NPP together with low decay because of the anaerobic conditions.

The results suggest that spatial variability in peatland carbon accumulation over the last 1000 yr is primarily controlled by spatial variation in NPP, which in turn is driven by growing season length (related to temperature) and growing season PAR. There is a statistically significant correlation between large-scale spatial variability in *Sphagnum* moss productivity and PAR0 that supports this hypothesized mechanism (Loisel et al., 2012). PAR0 incorporates both a PAR and temperature effect through growing season length; we therefore tested the relationship between total carbon and mean PAR over the unfrozen season. The reduced R^2 (0.13, $p < 0.0001$) compared with PAR0 ($R^2 = 0.33$), suggests that PAR has an effect independent of temperature. A much weaker relationship with growing season length ($R^2 = 0.08$, $p < 0.01$) implies growing season length is of subsidiary importance. Taken together, these results support our hypothesis that peatland carbon accumulation is driven by PAR over the growing season.

3.2 Temporal changes in carbon accumulation

There is an overall downward trend in the composite carbon accumulation rates from AD 1000 to 1850 (slope $-0.0026 \text{ g C m}^{-2} \text{ yr}^{-2}$, $p < 0.0001$), implying reduced peat accumulation during the LIA (Fig. 6a). The decline appears to be greater in the latter (post AD 1400) period than the earlier part of the record. The downward trend is present in the raw data as well as in the curves that include long-term decay and ecosystem maturity at individual sites, showing that the direction of change is insensitive to any assumptions concerning long-term ecosystem processes (Fig. 4). The magnitude of this change differs depending on the time period chosen. Here we compare long-term median values for the periods 1000–1425 and 1425–1850 AD, broadly corresponding to the times used to define the MCA and LIA (Mann et al., 2008, 2009; Jansen et al., 2007). We also compare the difference at the start (1000) and end (1850) of this period based on the slope of a regression line through the data. Using both approaches means that the analyses are robust to short-term fluctuations in the data. If long-term decay is taken into account, the difference between the mean of the median accumulation rates between these two periods is $2.43 (\pm 0.92) \text{ g C m}^{-2} \text{ yr}^{-1}$. The estimate for this is smaller ($1.01 \pm 0.89 \text{ g C m}^{-2} \text{ yr}^{-1}$) if some of the decay is compensated for by ecosystem maturity at individual sites (Fig. 4). The difference between the start (1000) and end of the data (1850) is 6.05 ± 5.40 and $3.15 \pm 5.08 \text{ g C m}^{-2} \text{ yr}^{-1}$, respectively, for a decay only and decay plus ecosystem maturity model (Fig. 4). Shorter term changes in the carbon accumulation curve may be related to temperature or other climate variables, but the changes are not sufficiently robust to draw firm conclusions about changes in carbon accumulation on (sub)centennial timescales.

3.3 Climate controls on carbon accumulation

One explanation for the reduction in carbon accumulation between the MCA and LIA is that decreased temperatures reduced NPP through shorter growing seasons (reduced GDD0). Shorter growing seasons would also reduce accumulated PAR0 assuming light levels remained unchanged. We tested this hypothesis by using the spatial relationship between total 1000-yr carbon accumulation and climate variables shown in Fig. 5 to calculate the effect of MCA–LIA cooling from palaeoclimate records (Fig. 6b) on carbon accumulation and comparing it with the observed changes in carbon accumulation (Fig. 6a).

We used the IGBP-DIS soil carbon gridded data set (<http://daac.ornl.gov/SOILS/guides/igbp-surfaces.html>) to select all grid cells occupied by northern peatlands, and summed their carbon accumulation rates as predicted by PAR0 from Eq. (1) (multiplied by the grid cell areas) to estimate the total carbon sink in northern peatlands. “Peatlands” were defined as $0.5 \times 0.5^\circ$ grids north of 40° N that contain

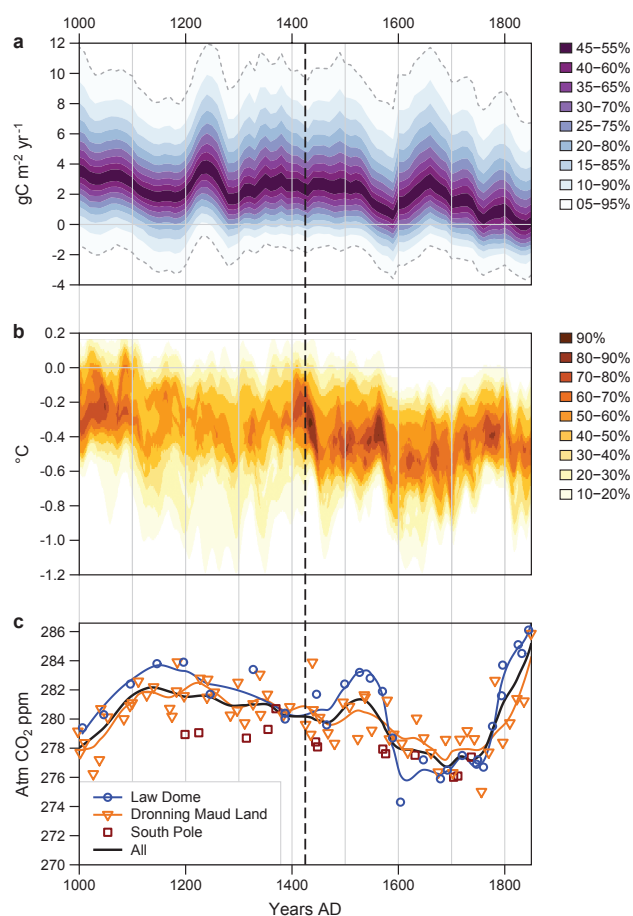


Fig. 6. Carbon accumulation variability, climate and atmospheric CO_2 over the past millennium. **(a)** Reconstruction of residual variation in carbon accumulation from long-term average rates taking into account autogenic processes composited from 24 well-dated sites from northern peatlands over the period AD 1000 to 1850, with confidence intervals (shading) based on bootstrap resampling by site. **(b)** Reconstruction of Northern Hemisphere temperature expressed as temperature anomaly from 1961–1990 (from Fig. 6.10c of Jansen et al., 2007). **(c)** The individual and composite atmospheric CO_2 concentration records based on ice cores from Antarctica as used by Frank et al. (2010). The correlation between the 10-yr smoothed median values of carbon accumulation **(a)** and the reconstructed temperature **(b)** is 0.39 ($p = 0.00006$) for the period 1000–1850. The shading in the temperature plot **(b)** represents the overlap in the uncertainty ranges of 10 different reconstructions (maximum 100% where temperatures are within ± 1 SE of all 10 reconstructions). The vertical line at AD 1425 marks the division between the analysis periods used for comparison of carbon accumulation and temperature.

10-min IGBP soil C grids that are all $> 31 \text{ kg C m}^{-2}$ (Wania et al., 2009). This is conservative, designed to focus on the biggest peatland areas that dominate the global peatland C cycle. PeatStash (Gallego-Sala et al., 2010) was used to calculate the accumulated PAR0 by summing the daily PAR0 over the growing season (days above freezing) for each peat-

land grid cell. The daily PAR0 is obtained by integrating the instantaneous PAR between sunrise and sunset (Harrison et al., 2010). The seasonal accumulated PAR0 depends on latitude and cloudiness, and indirectly on temperature, because the temperature determines the length of the growing season, i.e. which days are included in the seasonal accumulated PAR0 calculation.

We calculated changes in GDD0 and PAR0 that would result from the change in temperature inferred from the palaeoclimate reconstructions over the last 1000 yr (Fig. 6b). The temperature difference in the palaeoclimate records was based on calculations similar to those made for carbon accumulation over the same time periods. The median temperature difference between the two periods 1000–1425 and 1425–1850 is $0.116 \pm 0.02 \text{ }^{\circ}\text{C}$. We calculated the influence of this change in temperature on the duration of the growing season (Fig. 7a), and applied this to the relationships between carbon accumulation, GDD0 and PAR0 derived from the spatial analysis (Fig. 5a, b). Changes in PAR0 and GDD0 for each peatland grid cell were calculated by adding $0.116 \text{ }^{\circ}\text{C}$ to the input climate data set used in PeatStash.

The results suggest that the sensitivity of GDD0 and PAR0 to temperature is too small for either of these to provide the sole explanation for the observed change in carbon accumulation rate over the last 1000 yr. Over the peatland areas, a $0.116 \text{ }^{\circ}\text{C}$ increase results in a mean change of $+18.5$ GDD0 (5–95% range, 12.3–24.7 GDD0), which is predicted by the regression equation to result in a mean increase of $0.16 \text{ g C m}^{-2} \text{ yr}^{-1}$ (from 0.11 to $0.21 \text{ g C m}^{-2} \text{ yr}^{-1}$). PAR0 increases by $13.5 \text{ mol photons m}^{-2} \text{ season}^{-1}$ (range 0–37.4 $\text{mol photons m}^{-2} \text{ season}^{-1}$), which is predicted by the regression equation to result in an increase of $0.07 \text{ g C m}^{-2} \text{ yr}^{-1}$ (from 0 to $0.21 \text{ g C m}^{-2} \text{ yr}^{-1}$). If the magnitude of temperature change estimated from the Northern Hemisphere records is assumed to be correct, it is therefore unlikely that the observed changes in carbon accumulation of 1.0 – $2.4 \text{ g C m}^{-2} \text{ yr}^{-1}$ are a result of temperature and growing season changes alone. The conclusion is similar if the magnitude of temperature change over the period 1000–1850 is used for this calculation. In this case, a temperature change of $-0.266 \text{ }^{\circ}\text{C}$ is associated with a reduction in carbon accumulation of 3.2 – $6.1 \text{ g C m}^{-2} \text{ yr}^{-1}$. However, mean changes in GDD0 would be 43 GDD, and $31 \text{ mol photons m}^{-2} \text{ season}^{-1}$ in PAR0, resulting in predicted carbon accumulation reductions of only 0.37 and $0.17 \text{ g C m}^{-2} \text{ yr}^{-1}$, respectively. It is possible that Northern Hemisphere averages underestimate temperature changes in peatland regions, as estimates of maximum MCA–LIA difference range from > 0.3 to as much as $1.8 \text{ }^{\circ}\text{C}$ in a few locations (Mann et al., 2009). Repeating the analysis with a larger $1 \text{ }^{\circ}\text{C}$ change suggests a response of 0.4 to $0.9 \text{ g C m}^{-2} \text{ yr}^{-1}$ from PAR0, which is closer to but still less than the 1.0 – $1.4 \text{ g C m}^{-2} \text{ yr}^{-1}$ reduction in carbon accumulation shown in the data over the MCA–LIA.

If temperature change alone is not the driver of carbon accumulation changes, an additional hypothesis is that

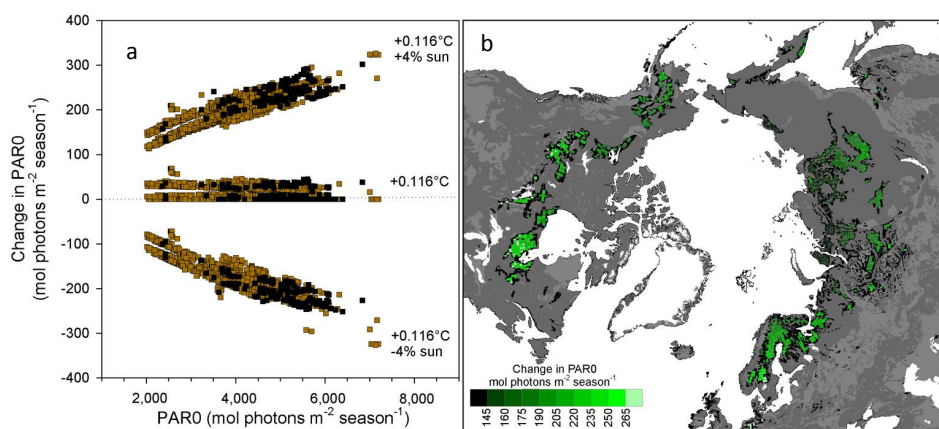


Fig. 7. Sensitivity of PAR0 to changes in temperature and sunshine hours for $0.5 \times 0.5^\circ$ peatland grid cells north of 40°N . **(a)** Sensitivity of all peatland cells (soil carbon $> 31 \text{ kg C m}^{-2}$) to $+0.116^\circ\text{C}$ change and a 4% increase and decrease in sunshine hours. Symbol shades show C storage in each cell as 31–50 (brown) or > 50 (black) kg C m^{-2} following shading in Fig. 1b. **(b)** Spatial variability of PAR0 response to a 0.116°C temperature increase and 4% increase in sunshine hours for the peatland grid cells. Growing season length for this scenario only increases by 0 to 3 days (median of 1 day) across the peatland grid.

reduced PAR from an increase in growing-season cloudiness significantly reduced NPP during the LIA, causing a fall in peatland carbon accumulation. We therefore also examined the sensitivity of PAR0 and carbon accumulation to changes in cloudiness (Fig. 7) by altering, in addition to 0.116°C warming, the annual sunshine hours by a range of \pm a percent of the input climate data set. Sensitivity tests (Fig. 7a) show that a 4% increase in sunshine hours on top of the influence of a $+0.116^\circ\text{C}$ change (equivalent to $199 \text{ mol photons m}^{-2} \text{ season}^{-1}$) could result in an average change of $+1.1 \text{ g C m}^{-2} \text{ yr}^{-1}$ over the peatland areas. These are averages; the change in PAR0 has a 5–95% range of $137\text{--}255 \text{ mol photons m}^{-2} \text{ season}^{-1}$ and change in carbon accumulation between 0.8 and $1.4 \text{ g C m}^{-2} \text{ yr}^{-1}$ for this sensitivity analysis. A geographical pattern emerges in these simulations where greater sensitivity of PAR0 to temperature and cloudiness occurs in lower latitudes (Fig. 7b). The existence of a positive relationship between PAR0 and peat carbon accumulation is further supported by Fig. 7a, which shows that high soil carbon grid cells in the independent soil carbon density data are located in areas with higher PAR0.

Our finding that spatial patterns of carbon accumulation can be explained by spatial variability in climate, specifically PAR0, implies that the temporal variations in carbon accumulation over the last millennium may also be explained by the same climatic variables. The data are consistent with this space for time substitution argument in that the warmer MCA has higher rates of carbon accumulation than the cooler LIA, i.e. longer, warmer growing seasons in the MCA increased carbon accumulation in comparison to the LIA. That the MCA was warmer than the LIA is not contested (Jansen et al., 2007), but we also suggest from our sensitivity analysis that temperature alone cannot explain the magnitude of the change in observed carbon accumulation over the last

millennium. Changes in PAR received by the plants due to cloudiness or some other influence such as snow cover (increased depth/snow lie after $T > 0$ during the LIA) or diffusivity are also required to generate the observed changes, assuming that temporal sensitivity is the same as that derived from spatial relationships. We explored the potential reduction of PAR by late-lying snow cover by calculating the PAR for days without snow and with temperature $> 0^\circ\text{C}$. The correlation between snow-free PAR0 and total carbon accumulated over the last 1000 yr was not significant ($p = 0.23$), so cloudiness is the more likely cause of change in PAR and carbon accumulation. The idea that the Northern Hemisphere LIA was characterised by greater summer cloudiness is consistent with historical documentary data (Grove, 2004), although recent findings from $\delta^{13}\text{C}$ in Fennoscandian tree ring studies suggest that there may have been regional differentiation of this tendency (Young et al., 2010; Gagen et al., 2011).

3.4 Changes in the strength of the peatland carbon sink

An average decrease of 1.01 to $2.43 \text{ g C m}^{-2} \text{ yr}^{-1}$ in carbon sequestration rates in peatlands between the MCA and the LIA represents a reduction in the strength of the sink of 0.0035 to $0.0085 \text{ Gt C yr}^{-1}$, assuming a total northern peatland area of 350 million ha (Gorham, 1991; Tarnocai et al., 2009). This should be compared with our estimate of the median net accumulation rate between 1000 and 1850 of 26.1 (sd. 1.47) $\text{g C m}^{-2} \text{ yr}^{-1}$ or 0.091 (sd. 0.005) Gt C yr^{-1} . This latter figure is similar to the average figure of $0.096 \text{ Gt C yr}^{-1}$ ($29 \text{ g C m}^{-2} \text{ yr}^{-1}$) estimated for the whole of the Holocene (Gorham, 1991). Neither of these figures for long-term net accumulation take into account the very slow long-term decay of the deeper peat layers. Decay of this store might reduce the actual average net ecosystem carbon balance

to around $0.042 \text{ Gt C yr}^{-1}$ (Yu, 2011) for the last millennium, depending on how much peat had accumulated before AD 1000, its permafrost status, and its average age and long-term decay rate. Thus, a reduction in carbon sink of 0.0035 and $0.0085 \text{ Gt C yr}^{-1}$ represents a decrease of about 8% and 20% in net ecosystem carbon balance of northern peatlands. This is an average figure for the two 425-yr periods chosen to represent the MCA and LIA here. The extremes in change are much greater; for example, the difference between the 25-yr mean at 1250 and 1850 is 5.9 ± 5.2 to $3.9 \pm 5.1 \text{ g C m}^{-2} \text{ yr}^{-1}$, or a 33 to 45% reduction in the strength of the CO_2 sink.

The main decrease in atmospheric CO_2 concentrations of approximately 6 ppm occurred over the period 1150 to 1750 (using the average curve in Fig. 6c). For this time period the decline in peatland carbon sink is between $2.79 (\pm 4.88)$ and $0.77 (\pm 4.87) \text{ g C m}^{-2} \text{ yr}^{-1}$, equivalent to 0.0027 to $0.0097 \text{ Gt C yr}^{-1}$ if applied to all northern peatlands. Assuming a linear decline in strength of the peatland sink over this period, this would represent a change equivalent to about $0.38 (\pm 2.41)$ to $1.38 (\pm 2.41)$ ppm in the atmosphere. Although this is a small change, because the observed decline in atmospheric CO_2 is unequivocally attributed to increased land carbon storage by the concomitant increase (Elsig et al., 2009) in the $\delta^{13}\text{C}$ of atmospheric CO_2 , the reduced carbon sequestration in northern peatlands has to be added to the amount of CO_2 reduction to be explained by carbon uptake, presumably as a result of suppressed decomposition of soil organic matter or increased NPP, in other terrestrial ecosystems.

4 Conclusions and implications

We have shown that there has been a small negative feedback to climate from changes in Northern Hemisphere peat accumulation over the last 1000 yr. The direction of the peat accumulation–climate feedback is supported by large-scale spatial patterns of peat accumulation over the past 1000 yr in relation to modern climate gradients. Northern peatlands sequestered carbon at a higher rate during the MCA than during the LIA. Although the magnitude of change is small (approximately 1 ppm CO_2 over the MCA–LIA transition), this suggests that carbon accumulation in northern peatlands may also change in response to future anthropogenic climate warming. Our spatial analyses indicate that the strength of any feedback effect could depend on changes in cloud cover as well as changes in temperature and growing season length. Continued carbon accumulation depends on sustained adequate moisture availability to maintain peatland growth. The sites we sampled all have adequate moisture supply at present and probably also during most of the last 1000 yr, but this may not continue in the future. Climate model projections suggest that most of the high latitudes will experience higher summer temperature and higher precipitation,

with decreases in soil moisture for some regions (Meehl et al., 2007). Midlatitude peatlands in locations such as western Europe are most vulnerable, especially as summer precipitation is projected to decrease. If the threshold between presence and absence of peatlands on the gradient of precipitation/equilibrium evapotranspiration ratio is crossed (Fig. 5c), some peatland areas (including some of the blanket bogs characteristic of extremely oceanic climates; Gallego-Sala et al., 2010; Gallego-Sala and Prentice, 2013) may stop growing. Changes in peatland extent in response to climate change occurred in the past, including during the last millennium (Finkelstein and Cowling, 2011), and will occur in the future (Gallego-Sala and Prentice, 2013). Our analysis suggests that a reduction in peatland area in the midlatitudes could be compensated by increased carbon accumulation across the very large areas of peatland in higher latitude regions, but only if the majority of these peatlands retain sufficient moisture and there is no significant increase in cloud cover. Current projections of cloud cover are highly uncertain for the northern peatland regions; some areas are projected to have less cloud and others more cloud (Meehl et al., 2007). A further compensating factor for peatland loss is that peatlands may increase in extent in high-latitude areas that are currently too cold and dry for peat formation. Other major uncertainties concerning feedbacks between peatlands and climate change still exist, including changes in fire regimes, nitrogen deposition, permafrost thaw and the role of methane emissions. Our analyses show that only about a third of the variability in C accumulation is explained by PAR and other factors must play a role. We might expect climate changes at some of the sites used in our analysis to move beyond the climate envelope explored here, and this could affect their contribution to the carbon budget. However, based on our analyses of carbon accumulation over the past millennium, and contrary to the conclusions from soil decay models (Ise et al., 2008; Dorrepaal et al., 2009), we suggest that carbon sequestration may increase in many high-latitude peatlands in response to future climate warming over the next century.

Acknowledgements. This paper is a contribution to the continuing work of PARCH (Peatland Archives of Carbon and Hydrology) and INQUA Project 0804 (Peatlands as Holocene Palaeoenvironmental Archives). The paper was conceived and analyses were initiated at two workshops in 2009 (Vihula, Estonia and Dartington, England) funded by the US National Science Foundation through a grant to S. T. J. for a Workshop on Peatland Archives of Holocene Carbon and Climate Variability (EAR-0907815), the QUEST (Quantifying and Understanding the Earth System) programme of the UK National Environmental Research Council (NERC), INQUA Project 0804, the International Geosphere-Biosphere Programme (IGBP) Past Global Changes (PAGES) project and the UK Quaternary Research Association. D. J. C., A. G. S. and C. I. P. acknowledge NERC grant NE/I012915/1. The paper benefitted from the comments of three anonymous reviewers.

Edited by: E. J. Javaux

References

- Abe-Ouchi, A. and Harrison, S. P.: Constraining the carbon-cycle feedback using palaeodata: the PalaeoCarbon Modelling Inter-comparison Project, *Eos Trans. AGU* 90, p. 140, 2009.
- Ahn, J., Brook, E. J., Mitchell, L., Rosen, J., McConnell, J. R., Taylor, K., Etheridge, D., and Rubino, M.: Atmospheric CO₂ over the last 1000 years: A high-resolution record from the West Antarctic Ice Sheet (WAIS) Divide ice core, *Global Biogeochem. Cy.*, 26, GB2027 doi:10.1029/2011GB004247, 2012.
- Archer, D., Eby, M., Brovkin, V., Ridgwell, A., Cao, L., Mikolajewicz, U., Caldeira, K., Matsumoto, K., Munhoven, G., Montenegro, A., and Tokos, K.: Atmospheric lifetime of fossil fuel carbon dioxide, *Annu. Rev. Earth Pl. Sc.*, 37, 117–34, 2009.
- Bauer, I. E., Bhatti J. S., Swanston, C., Wieder, R. K., and Preston, C. M.: Organic matter accumulation and community change at the peatland-upland interface: Inferences from ¹⁴C and ²¹⁰Pb dated profiles, *Ecosystems*, 12, 636–653, 2009.
- Beilman, D. W., MacDonald, G. M., Smith, L. C., and Reimer, P. J.: Carbon accumulation in peatlands of West Siberia over the last 2000 years, *Global Biogeochem. Cy.*, 23, GB1012, doi:10.1029/2007gb003112, 2009.
- Belyea, L. R. and Baird, A. J.: Beyond “the limits to peat bog growth”: Cross-scale feedback in peatland development, *Ecol. Monogr.*, 76, 299–322, 2006.
- Blaauw, M. and Christen, J. A.: Radiocarbon peat chronologies and environmental change, *Appl. Statist.* 54, 805–816, 2005.
- Blaauw, M. and Christen, J. A.: Flexible paleoclimate age-depth models using an autoregressive gamma process, *Bayesian Analysis*, 6, 457–474, 2011.
- Clymo, R. S.: The limits to peat bog growth, *Philos. T. R. Soc. Lon. B*, 303, 605–654, 1984.
- Cox, P. and Jones, C.: Illuminating the modern dance of climate and CO₂, *Science*, 321, 1642–1644, 2008.
- De Vleeschouwer, F., Piotrowska, N., Sikorski, J., Pawlyta, J., Cheburkin, A., Le Roux, G., Lamentowicz, M., Fagel, N., and Mauquoy, D.: Multiproxy evidence of “Little Ice Age” palaeoenvironmental changes in a peat bog from northern Poland, *Holocene*, 19, 625–637, 2009.
- De Vleeschouwer, F., Sikorski, J., and Fagel, N.: Development of Lead-210 measurement in peat using Polonium extraction, A procedural comparison, *Geochronometria*, 36, 108–115, 2010.
- De Vleeschouwer, F., Pazdur, A., Luthers, C., Streef, M., Mauquoy, D., Wastiaux, C., Le Roux, G., Moschen, R., Blaauw, M., Pawlyta, J., Sikorski, J., and Piotrowska, N.: A millennial record of environmental change in peat deposits from the Misten Bog (east Belgium), *Quatern. Int.*, 268, 44–57, 2012.
- Denman, K. L., Brasseur, G., Chidthaisong, A., Ciais, P., Cox, P. M., Dickinson, R. E., Hauglustaine, D., Heinze, C., Holland, E., Jacob, D., Lohmann, U., Ramachandran, S., da Silva Dias, P. L., Wofsy, S. C., and Zhang, X.: Couplings between changes in the climate system and biogeochemistry, in: *Climate Change 2007: The Physical Science Basis, Contribution of Working Group I to the Fourth Assessment Report of the Intergovernmental Panel on Climate Change*, edited by: Solomon, S., Qin, D., Manning, M., Chen, Z., Marquis, M., Averyt, K. B., Tignor, M., and Miller, H. L., Cambridge University Press, Cambridge, 499–587, 2007.
- Dorrepaal, E., Toet, S., van Logtestijn, R. S. P., Swart, E., van de Weg, M. J., Callaghan, T. V., and Aerts, R.: Carbon respiration from subsurface peat accelerated by climate warming in the sub-arctic, *Nature*, 460, 616–619, 2009.
- Elsig, J., Schmitt, J., Leuenberger, D., Schneider, R., Eyer, M., Leuenberger, M., Joos, F., Fischer, H., and Stocker, T. F.: Stable isotope constraints on Holocene carbon cycle changes from an Antarctic ice core, *Nature*, 461, 507–510, 2009.
- Finkelstein, S. A. and Cowling, S. A.: Wetlands, temperature, and atmospheric CO₂ and CH₄ coupling over the past two millennia, *Global Biogeochem. Cy.*, 25, GB1002, doi:10.1029/2010GB003887, 2011.
- Frank, D. C., Esper, J., Raible, C. C., Büntgen, U., Trouet, V., Stocker, B., and Joos, F.: Ensemble reconstruction constraints on the global carbon cycle sensitivity to climate, *Nature*, 63, 527–530, 2010.
- Friedlingstein, P., Cox, P., Betts, R., Bopp, L., von Bloh, W., Brovkin, V., Cadule, P., Doney, S., Eby, M., Fung, I., Bala, G., John, J., Jones, C., Joos, F., Kato, T., Kawamiya, M., Knorr, W., Lindsay, K., Matthews, H. D., Raddatz, T., Rayner, P., Reick, C., Roeckner, E., Schnitzler, K.-G., Schnur, R., Strassmann, K., Weaver, A. J., Yoshikawa, C., and Zeng, N.: Climate-carbon cycle feedback analysis: results from the C⁴MIP model intercomparison, *J. Climate*, 19, 3337–3353, 2006.
- Frolking, S. and Roulet, N. T.: Holocene radiative forcing impact of northern peatland carbon accumulation and methane emission, *Global Change Biol.*, 13, 1079–1088, 2007.
- Gagen, M., Zorita, E., McCarroll, D., Young, G. H. F., Grudd, H., Jalkanen, R., Loader, N. J., Robertson, I., and Kirchhefer, A.: Cloud response to summer temperatures in Fennoscandia over the last thousand years, *Geophys. Res. Lett.*, 38, L05701, doi:10.1029/2010gl046216, 2011.
- Gallego-Sala, A. V. and Prentice, I. C.: Blanket peat biome endangered by climate change, *Nature Climate Change*, 3, 152–155, 2013.
- Gallego-Sala, A. V., Clark, J. M., House, J. I., Orr, H. G., Prentice, I. C., Smith, P., Farewell, T., and Chapman, S. J.: Application of a global bioclimatic envelope model to assess the impact of climate change on the distribution of blanket peatlands in Great Britain, *Clim. Res.*, 34, C911, doi:10.3354/cr00911, 2010.
- Gorham, E.: Northern peatlands, role in the carbon cycle and probable responses to climatic warming, *Ecol. Appl.*, 1, 182–195, 1991.
- Grove, J. M.: *Little Ice Ages, Ancient and Modern*, Routledge, London, 2004.
- Harrison, S. P., Prentice, I. C., Barboni, D., Kohfeld, K. E., Ni, J., and Sutra, J. P.: Ecophysiological and bioclimatic foundations for a global plant functional classification, *J. Veg. Sci.*, 21, 300–317, 2010.
- Hua, Q. and Barbetti, M.: Review of tropospheric bomb ¹⁴C data for carbon cycle modeling and age calibration purposes, *Radiocarbon*, 46, 1273–1298, 2004.
- Hughes, P. D. M., Blundell, A., Charman, D. J., Bartlett, S., Daniell, J. R. G., Wojatschke, A., and Chambers, F. M.: An 8500 cal. year multi-proxy climate record from a bog on Bonavista North peninsula, Newfoundland: contributions of melt-water discharge and solar forcing, *Quaternary Sci. Rev.*, 25, 1208–1227, 2006.
- Ise, T., Dunn, A. L., Wofsy, S. C., and Moorcroft, P. R.: High sensitivity of peat decomposition to climate change through water-table feedback, *Nat. Geosci.*, 1, 763–766, 2008.
- Jansen, E., Overpeck, J., Briffa, K. R., Duplessy, J.-C., Joos, F., Masson-Delmotte, V., Olago, D., Otto-Bliesner, B., Peltier, W.

- R., Rahmstorf, S., Ramesh, R., Raynaud, D., Rind, D., Solomina, O., Villalba, R., and Zhang, D.: Palaeoclimate, in: *Climate Change 2007: The Physical Science Basis, Contribution of Working Group I to the Fourth Assessment Report of the Intergovernmental Panel on Climate Change*, edited by: Solomon, S., Qin, D., Manning, M., Chen, Z., Marquis, M., Averyt, K. B., Tignor, M., and Miller, H. L., Cambridge, University Press, Cambridge, 2007.
- Jungclauss, J. H., Lorenz, S. J., Timmreck, C., Reick, C. H., Brovkin, V., Six, K., Segschneider, J., Giorgetta, M. A., Crowley, T. J., Pongratz, J., Krivova, N. A., Vieira, L. E., Solanki, S. K., Klocke, D., Botzet, M., Esch, M., Gayler, V., Haak, H., Raddatz, T. J., Roeckner, E., Schnur, R., Widmann, H., Claussen, M., Stevens, B., and Marotzke, J.: Climate and carbon-cycle variability over the last millennium, *Clim. Past*, 6, 723–737, doi:10.5194/cp-6-723-2010, 2010.
- Kaplan, J. O., Bigelow, N. H., Bartlein, P. J., Christensen, T. R., Cramer, W., Harrison, S. P., Matveyeva, N. V., McGuire, A. D., Murray, D. F., Prentice, I. C., Razzhivin, V. Y., Smith, B., Walker, D. A., Anderson, P. M., Andreev, A. A., Brubaker, L. B., Edwards, M. E., and Lozhkin, A. V.: Climate change and Arctic ecosystems II: Modeling, palaeodata-model comparisons, and future projections, *J. Geophys. Res.-Atmos.*, 108, D198171, doi:10.1029/2002JD002559, 2003.
- Kremenetski, K. V., Velichko, A. A., Borisova, O. K., MacDonald, G. M., Smith, L. C., Frey, K. E., and Orlova, L. A.: Peatlands of the West Siberian Lowlands: current knowledge on zonation, carbon content and late Quaternary History, *Quaternary Sci. Rev.* 22, 703–723, 2003.
- Le Roux, G., Aubert, D., Stille, P., Krachler, M., Kober, B., Cheburkin, A., Bonani, G., and Shotyk, W.: Recent atmospheric Pb deposition at a rural site in southern Germany assessed using a peat core and snowpack, and comparison with other archives, *Atmos. Environ.*, 39, 6790–6801, 2005.
- Loisel, J., Gallego-Sala, A. V., and Yu, Z.: Global-scale pattern of peatland Sphagnum growth driven by photosynthetically active radiation and growing season length, *Biogeosciences*, 9, 2737–2746, doi:10.5194/bg-9-2737-2012, 2012.
- MacDonald, G. M., Beilman, D. W., Kremenetski, K. V., Sheng, Y. W., Smith, L. C., and Velichko, A. A.: Rapid early development of circumarctic peatlands and atmospheric CH₄ and CO₂ variations, *Science*, 314, 285–288, 2006.
- Mann, M. E., Zhang, Z. H., Hughes, M. K., Bradley, R. S., Miller, S. K., Rutherford, S., and Ni, F. B.: Proxy-based reconstructions of hemispheric and global surface temperature variations over the past two millennia, *P. Natl. Acad. Sci. USA*, 105, 13252–13257, 2008.
- Mann, M. E., Zhang, Z. H., Rutherford, S., Bradley, R. S., Hughes, M. K., Shindell, D., Ammann, C., Faluvegi, G., and Ni, F. B.: Global signatures and dynamical origins of the Little Ice Age and Medieval Climate Anomaly, *Science*, 326, 1256–1260, 2009.
- Marlon, J. R., Bartlein, P. J., Carcaillet, C., Gavin, D. G., Harrison, S. P., Higuera, P. E., Joos, F., Power, M. J., and Prentice, I. C.: Climate and human influences on global biomass burning over the past two millennia, *Nat. Geosci.*, 1, 697–702, 2008.
- Mauquoy, D., Engelkes, T., Groot, M. H. M., Markesteijn, F., Oudejans, M. G., van der Plicht, J., and van Geel, B.: High-resolution records of late Holocene climate change and carbon accumulation in two north-west European ombrotrophic peat bogs, *Palaeogeogr. Palaeoecol.*, 186, 275–310, 2002.
- Meehl, G. A., Stocker, T. F., Collins, W. D., Friedlingstein, P., Gaye, A. T., Gregory, J. M., Kitoh, A., Knutti, R., Murphy, J. M., Noda, A., Raper, S. C. B., Watterson, I. G., Weaver, A. J., and Zhao, Z.-C.: Global climate projections, in: *Climate Change 2007: The Physical Science Basis. Contribution of Working Group I to the Fourth Assessment Report of the Intergovernmental Panel on Climate Change*, edited by: Solomon, S., Qin, D., Manning, M., Chen, Z., Marquis, M., Averyt, K. B., Tignor, M., and Miller, H. L., Cambridge Univ. Press, Cambridge, 747–845, 2007.
- Moschen, R., Kühl, N., Rehberger, I., and Lücke, A.: Stable carbon and oxygen isotopes in sub-fossil Sphagnum: Assessment of their applicability for palaeoclimatology, *Chem. Geol.*, 259, 262–272, 2009.
- Pongratz, J., Reick, C. H., Raddatz, T., and Claussen, M.: Effects of anthropogenic land cover change on the carbon cycle of the last millennium, *Global Biogeochem. Cy.*, 23, GB4001, doi:10.1029/2009GB003488, 2009.
- Prentice, I. C., Sykes, M. T., and Cramer, W.: A simulation model for the transient effects of climate change on forest landscapes, *Ecol. Model.*, 65, 51–70, 1993.
- Rausch, N., Ukonmaanaho, L., Nieminen, T. M., Krachler, M., and Shotyk, W.: Comparison of atmospheric deposition of copper, nickel, cobalt, zinc and cadmium recorded by Finnish peat cores with monitoring data and emission records, *Environ. Sci. Technol.*, 39, 5989–5998, 2005.
- Reimer, P. J., Baillie, M. G. L., Bard, E., Bayliss, A., Beck, J. W., Blackwell, P. G., Ramsey, C. B., Buck, C. E., Burr, G. S., Edwards, R. L., Friedrich, M., Grootes, P. M., Guilderson, T. P., Hajdas, I., Heaton, T. J., Hogg, A. G., Hughen, K. A., Kaiser, K. F., Kromer, B., McCormac, F. G., Manning, S. W., Reimer, R. W., Richards, D. A., Southon, J. R., Talamo, S., Turney, C. S. M., van der Plicht, J., and Weyhenmeyer, C. E.: IntCal09 and Marine09 radiocarbon age calibration curves, 0–50,000 years cal BP, *Radiocarbon*, 51, 1111–1150, 2009.
- Sillasoo, U., Mauquoy, D., Blundell, A., Charman, D., Blaauw, M., Daniell, J. R. G., Toms, P., Newberry, J., Chambers, F. M., and Karofeld, E.: Peat multi-proxy data from Männikjärve bog as indicators of Late Holocene climate changes in Estonia, *Boreas*, 36, 20–37, 2007.
- Swindles, G. T., Blundell, A., Roe, H. M. and Hall, V. A.: A 4500-year proxy climate record from peatlands in the North of Ireland: the identification of widespread summer “drought phases”?, *Quaternary Sci. Rev.* 29, 1577–1589, 2010.
- Tarnocai, C., Canadell, J. G., Schuur, E. A. G., Kuhry, P., Mazhitova, G., and Zimov, S.: Soil organic carbon pools in the northern circumpolar permafrost region, *Global Biogeochem. Cy.*, 23, GB2023, doi:10.1029/2008GB003327, 2009.
- Ukonmaanaho, L., Nieminen, T. M., Rausch, N., Cheburkin, A., Le Roux, G., and Shotyk, W.: Recent organic matter accumulation in relation to some climatic factors in ombrotrophic peat bogs near heavy metal emission sources in Finland, *Global Planet. Change*, 53, 259–268, 2006.
- Väliranta M., Korhola, A., Seppä, H., Tuittila, E. S., Sarmaja-Korjonen, K., Laine, J., and Alm, J.: High resolution reconstruction of wetness dynamics in a southern boreal raised bog, Finland, during the late Holocene – a quantitative approach, *Holocene*, 17, 1093–1107, 2007.

- van Bellen, S., Dallaire, P.-L., Garneau, M. and Bergeron, Y.: Quantifying spatial and temporal Holocene carbon accumulation in ombrotrophic peatlands of the Eastmain region, Quebec, Canada, *Global Biogeochem. Cy.*, 25, GB2016, doi:10.1029/2010GB003877, 2011.
- van der Linden, M. and van Geel, B.: Late Holocene climate change and human impact recorded in a South Swedish ombrotrophic peat bog, *Palaeogeogr. Palaeoecol.*, 240, 649–667, 2006.
- van der Linden, M., Barke, J., Vickery, E., Charman, D. J., and van Geel, B.: Late Holocene human impact and climate change recorded in a north Swedish peat deposit, *Palaeogeogr. Palaeoecol.*, 258, 1–27, 2008.
- Vitt, D. H., Halsey, L. A., Bauer, I. E., and Campbell, C.: Spatial and temporal trends in carbon storage of peatlands of continental western Canada through the Holocene, *Can. J. Earth Sci.*, 37, 683–693, 2000.
- Wania, R., Ross, I., and Prentice, I. C.: Integrating peatlands and permafrost into a dynamic global vegetation model: 1. Evaluation and sensitivity of physical land surface processes, *Global Biogeochem. Cy.*, 23, GB3014, doi:10.1029/2008GB003412, 2009.
- Young, G. H. F., McCarroll, D., Loader, N. J., and Kirchhefer, A. J.: A 500-year record of summer near-ground solar radiation from tree-ring stable carbon isotopes, *Holocene*, 20, 315–324, 2010.
- Yu, Z. C.: Holocene carbon flux histories of the world's peatlands: Global carbon-cycle implications, *Holocene*, 21, 761–774, 2011.
- Yu, Z. C., Vitt, D. H., Campbell, I. D., and Apps, M. J.: Understanding Holocene peat accumulation pattern of continental fens in western Canada, *Can. J. Bot.*, 81, 267–282, 2003.
- Yu, Z., Beilman, D. W., and Jones, M. C.: Sensitivity of northern peatland carbon dynamics to Holocene climate change, in: Carbon cycling in northern peatlands, edited by: Baird, A. J., Belyea, L. R., Comas, X., Reeve, A., and Slater, L., American Geophysical Union, Washington DC, *Geoph. Monog. Series*, 184, 55–69, doi:10.1029/2008GM000822, 2009.
- Yu, Z. C., Loisel, J., Brosseau, D. P., Beilman, D. W., and Hunt, S. J.: Global peatland dynamics since the Last Glacial Maximum, *Geophys. Res. Lett.*, 37, L13402, doi:10.1029/2010GL043584, 2010.