

This is a repository copy of *Identification of roots from grass swards using PCR-RFLP and FFLP of the plastid trnL (UAA) intron.*

White Rose Research Online URL for this paper:

<https://eprints.whiterose.ac.uk/30/>

---

**Article:**

Ridgway, Karyn P., Duck, Janette M. and Young, J. Peter W. orcid.org/0000-0001-5259-4830 (2003) Identification of roots from grass swards using PCR-RFLP and FFLP of the plastid trnL (UAA) intron. BMC Ecology. ISSN 1472-6785

<https://doi.org/10.1186/1472-6785-3-8>

---

**Reuse**

Items deposited in White Rose Research Online are protected by copyright, with all rights reserved unless indicated otherwise. They may be downloaded and/or printed for private study, or other acts as permitted by national copyright laws. The publisher or other rights holders may allow further reproduction and re-use of the full text version. This is indicated by the licence information on the White Rose Research Online record for the item.

**Takedown**

If you consider content in White Rose Research Online to be in breach of UK law, please notify us by emailing [eprints@whiterose.ac.uk](mailto:eprints@whiterose.ac.uk) including the URL of the record and the reason for the withdrawal request.

Methodology article

Open Access

## Identification of roots from grass swards using PCR-RFLP and FFLP of the plastid *trnL* (UAA) intron

Karyn P Ridgway\*, Janette M Duck and J Peter W Young

Address: Department of Biology, University of York, PO Box 373 York, YO10 5YW, UK

Email: Karyn P Ridgway\* - [kpr1@york.ac.uk](mailto:kpr1@york.ac.uk); Janette M Duck - [janettemduck@yahoo.com](mailto:janettemduck@yahoo.com); J Peter W Young - [jpy1@york.ac.uk](mailto:jpy1@york.ac.uk)

\* Corresponding author

Published: 16 October 2003

Received: 01 August 2003

*BMC Ecology* 2003, **3**:8

Accepted: 16 October 2003

This article is available from: <http://www.biomedcentral.com/1472-6785/3/8>

© 2003 Ridgway et al; licensee BioMed Central Ltd. This is an Open Access article: verbatim copying and redistribution of this article are permitted in all media for any purpose, provided this notice is preserved along with the article's original URL.

### Abstract

**Background:** The specific associations between plant roots and the soil microbial community are key to understanding nutrient cycling in grasslands, but grass roots can be difficult to identify using morphology alone. A molecular technique to identify plant species from root DNA would greatly facilitate investigations of the root rhizosphere.

**Results:** We show that *trnL* PCR product length heterogeneity and a maximum of two restriction digests can separate 14 common grassland species. The RFLP key was used to identify root fragments at least to genus level in a field study of upland grassland community diversity. Roots which could not be matched to known types were putatively identified by comparison of the nuclear ribosomal ITS sequence to the GenBank database. Ten taxa were identified among almost 600 root fragments. Additionally, we have employed capillary electrophoresis of fluorescent *trnL* PCR products (fluorescent fragment length polymorphism, FFLP) to discriminate all taxa identified at the field site.

**Conclusion:** We have developed a molecular database for the identification of some common grassland species based on PCR-RFLP of the plastid transfer RNA leucine (*trnL*) UAA gene intron. This technique will allow fine-scale studies of the rhizosphere, where root identification by morphology is unrealistic and high throughput is desirable.

### Background

Plants can be difficult to identify from roots, even for experienced taxonomists. Fine roots often grow deep and intertwined with each other in swards and it is not easy to link above and below ground plant parts for morphological identification. Studies of below-ground processes are currently hindered by the inability to identify fine roots in soil [1]. To understand nutrient cycling in an upland grassland we are studying the spatial relationship between co-occurring plant roots and their associated microbes, both endomycorrhizal fungi and rhizoplane bacteria. To address the question 'do the roots of different

plant species harbour distinct microbial populations?' we first required a method to identify plant species from root fragments.

A molecular method for identification must satisfy requirements for specific amplification of plant DNA and reveal enough variability to distinguish species. The *trnL* UAA intron from plastid DNA shows variability comparable to that of nuclear intergenic regions and can resolve taxa at the genus/species level in RFLP-based studies [2]. It has been exploited to identify tree species from fine roots collected in the Alps [3]. Sequence variation in the *trnL*

intron has also been used to identify *Cinnamomum* species [4] and cyanobacterial partners of *Peltigera* lichens [5], and has recently been used to confirm morphological identification of three grass species in a study of AM diversity in upland grassland [6].

Our aims were firstly to extend the molecular data for grasses so that we could identify, to species level, small (< 1 cm) root fragments collected from soil cores sampled from an upland grassland, and secondly, to develop a high-throughput method of plant root identification utilising capillary electrophoresis of fluorescently labelled PCR products.

## Results and Discussion

### trnL PCR-RFLP key to grass identification

The *trnL* intron was successfully amplified from a range of grasses including the dominant species recorded at the field site. Nucleotide sequence data was deposited in GenBank with accession numbers as listed in Table 1.

Using sequence data, we selected restriction digests which would separate the taxa. PCR products varied in size from 496 bp – 646 bp, and this length heterogeneity provided a useful character for discriminating *Agrostis* spp. from other grasses (Table 1). *Agrostis* was subdivided into *A. capillaris* and *A. vinealis* with *Bfal*. A double digest with *NlaIV* and *DdeI* allowed the remaining species to be separated into *Festuca*, *Poa* and 'others'. The *Festuca* group was further divided to *F. arundinaceae*, *F. juncifolia* and *F. rubra*/*F. ovina* with *XmnI*. *F. rubra* and *F. ovina* proved difficult to separate by *trnL* RFLP since they varied at only 6 nucleotide positions. *P. pratensis* and *P. trivialis* were also not separable by RFLP since the *trnL* intron sequences did not contain informative restriction site differences. The

*trnL* intron of closely related species may not always contain enough sequence variation for separation by RFLP [3]. However, we were able to distinguish between *F. rubra* & *F. ovina*, and between *P. pratensis* & *P. trivialis* by amplification of the ribosomal ITS region followed by digestion with *Hinfl*. Amplification with ITS4 and the newly designed ITS1P consistently amplified a single band from reference plant DNA but often produced multiple bands from environmental samples. However, optimisation of cycling conditions allowed the amplification of a single band from environmental root samples.

The remaining sequences, *Deschampsia caespitosa*, *Deschampsia flexuosa*, *Nardus stricta*, *Holcus lanatus*, *Luzula campestris* and *Phleum pratense*, were separated by digestion with *Hsp92II*. With a combination of length heterogeneity and one or two enzyme digests a total of ten taxa could be identified to species and the remaining four to genus level. A key was designed to aid interpretation of *trnL* PCR product length and restriction patterns (Table 1).

### Identification of field roots

The RFLP key was used in an attempt to identify 960 root fragments sampled from the field. Amplification yielded a single PCR product in 579 roots (60.3 %), and a mixed product in 17 roots (1.8 %), possibly due to small root fragments of more than one species. Samples which twice failed to amplify were considered either to be dead and degraded, or to contain inhibitory compounds co-precipitated from root pigments or adhering soil. Co-precipitation of root pigments has previously been reported to inhibit PCR [7] and we made no attempt to remove soil particles since the molecular characterisation of rhizoplane microbes was the subject of a related study.

**Table 1: Key to grass identification at Sourhope using *trnL* PCR-RFLP. Fragment sizes were determined using nucleotide sequence data of the *trnL* PCR product of each reference species. Restriction enzyme(s) are followed by the fragment sizes expected from digestion with the enzyme(s). GenBank accession numbers are provided in brackets following the species name.**

<i>trnL</i> PCR	Restriction digest 1	Restriction digest 2	Identity (accession number)
~500 bp	<i>Bfal</i> : 158/277/61 <i>Bfal</i> : 439/61		<i>Agrostis capillaris</i> (AY177347 <sup>b</sup> ) <i>Agrostis vinealis</i> (AY177332)
>500 bp	<i>NlaIV/DdeI</i> : 57/53/187/317-329		<i>Poa pratensis/trivialis</i> <sup>a</sup> (AY177349 <sup>b</sup> )/ AY177338)
	<i>NlaIV/DdeI</i> : 57/53/200-204/298-300	<i>XmnI</i> : 197/45/367-370	<i>Festuca rubra/ovina</i> <sup>a</sup> (AY177345 <sup>b</sup> )/ AY177342)
	<i>NlaIV/DdeI</i> : 57/53/505-536	<i>XmnI</i> : 197/45/178/154 <i>Hsp92II</i> : 125/435/86 <i>Hsp92II</i> : 125/405/86	<i>Festuca juncifolia</i> (AY177344) <i>Deschampsia flexuosa</i> (AY177336) <i>Deschampsia caespitosa</i> (AY177335)
		<i>Hsp92II</i> : 336/200/86 <i>Hsp92II</i> : 563/86 <i>Hsp92II</i> : 343/281 <i>Hsp92II</i> : 528/86	<i>Nardus stricta</i> (AY177337) <i>Holcus lanatus</i> (AY177348) <i>Luzula campestris</i> (AY177333) <i>Phleum pratense</i> (AY177339)

<sup>a</sup> can be separated by ITS PCR-RFLP with *Hinfl* (Pp:335/293/76/17, Pt:293/207/127/76/17; Fr:337/297/76/17, Fo:293/230/107/76/17) <sup>b</sup> sequences from reference [6].

**Table 2: Occurrence of grass species at Sourhope based on identification of 579 roots.**

Taxon	Number of roots	Frequency of occurrence (%)	Number sequenced
<i>Agrostis capillaris</i>	355	61.3	11
<i>Agrostis vinealis</i>	66	11.4	2
<i>Deschampsia caespitosa</i>	45	7.8	4
<i>Festuca rubra</i>	42	7.3	6
<i>Poa pratensis</i>	31	5.4	3
<i>Agrostis</i> sp.	19	3.3	4
<i>Festuca</i> sp.	14	2.4	2
<i>Nardus stricta</i>	3	0.5	1
<i>Holcus</i> sp.	3	0.5	4
<i>Deschampsia flexuosa</i>	1	0.2	1

By comparing RFLP patterns to the key we were able to assign most root fragments to species. Ten grass species were represented among the 579 root fragments analysed. The frequency and distribution of each species across the study site was determined. *Agrostis capillaris* dominated the root population, representing 61.3 % of identified roots (Table 2) and present in every core. Eleven percent of roots were identified as *A. vinealis*, 7.8 % *D. caespitosa*, 7.3 % *F. rubra* and 5.4 % *P. pratensis*. The remaining species occurred at frequencies of less than 5 % (Table 2). Using this method we were able to select a subset of samples for further analysis of microbial diversity such that comparative information could be maximised within and between species and cores (results not shown).

While the majority of RFLP patterns matched the grass species known to be present at the site, a few roots yielded unexpected patterns. Fourteen roots yielded an RFLP pattern which matched *F. juncifolia* and three roots matched *H. lanatus*. Since these species have not been recorded at the Sourhope field site or indeed at this altitude, corresponding roots were cautiously recorded as *Festuca* sp. and *Holcus* sp.

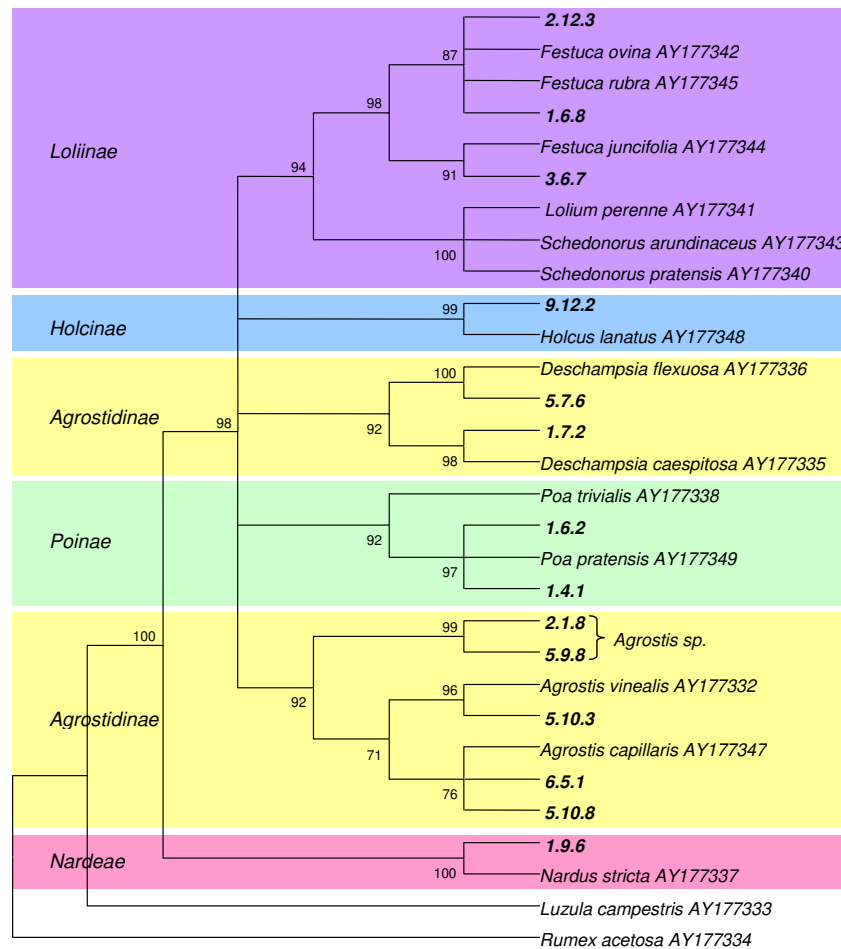
Using ITS-RFLP to distinguish *F. rubra* from *F. ovina* and *P. pratensis* from *P. trivialis*, only the *F. rubra* and *P. pratensis* types were detected. Nineteen root samples displayed an RFLP pattern not seen in any of our 'key' species. A Blast search [8] of the NCBI database using the ITS sequence from of a subset of the unassigned samples matched *Calamagrostis epigeios* most closely although this species has not been detected in previous vegetation surveys of the site. The number of ITS sequences in Genbank makes this region potentially more useful than the *trnL* intron for identifying unknowns but because the chloroplast *trnL* intron is plant-specific we thought it better suited to plant identification than the nuclear-encoded ITS which can sometimes be amplified from both plants and fungi [9].

PCR products from root samples representing each *trnL* intron RFLP type were sequenced to verify identity. The nucleotide sequence from a root identified as *H. lanatus* was 34 bp longer than our database key sequence, confirming the need for caution in assigning species names to RFLP types. The alignment of eleven *A. capillaris* *trnL* intron sequences shows little intraspecific variation (1 bp difference in 500 bp). A phylogenetic tree to compare *trnL* sequences from roots with key species supports current taxonomic relationships in the Poaceae (Fig. 1). Since the *trnL* sequence of the unassigned samples grouped with *Agrostis* we labelled these unknowns as *Agrostis* sp.

#### Fluorescent fragment length polymorphism

Capillary electrophoresis of fluorescently labelled *trnL* PCR products was tested as a high-throughput method of discriminating the ten species detected at the field site. Table 3 shows the range of fragment lengths obtained from at least three samples of each taxon where available. Fragment lengths for most taxa varied within the range of resolution ( $\pm 2$  bp) and seven species could be unambiguously defined. *N. stricta* and *Agrostis* sp. had length variants of 3 bp and 6 bp respectively, resulting in an overlap between the fragment lengths of *N. stricta*, *Agrostis* sp. and *P. pratensis*. However, variation in the 5' terminal fragment from *Hsp92II* digestion can resolve all 3 species.

Identification of plant species from root DNA by *trnL* PCR fluorescent fragment length polymorphism (FFLP) represents a considerable advance on the use of agarose gel based PCR-RFLP techniques by offering high resolution, which removes the need for multiple enzyme digests. Also, fewer steps and more automation can reduce sources of error when dealing with large numbers of samples. Further savings could be made by combining, in one well, the fluorescent products of both root and associated microbial products if different terminal dyes are used. Multiplex PCR is also an option if primers pairs can be designed to avoid interaction and anneal efficiently at the same tem-



**Figure 1**

Phylogenetic relationships within the Poaceae based on *trnL* intron sequences from this study. Individual roots from field sampling are shown in bold with a unique identifier. Coloured blocks denote subtribes. The consensus tree was constructed using maximum parsimony in MEGA version 2.1 [13]. Bootstrap percentages from 100 replications are indicated.

**Table 3: Range of estimated fragment lengths for Sourhope grass species determined by capillary electrophoresis of fluorescent dye-labelled *trnL* PCR.**

Grass species	<i>trnL</i> PCR length (bp)
<i>Agrostis capillaris</i>	496.5–497.5
<i>Agrostis vinealis</i>	500.7–501.9
<i>Festuca rubra</i>	612.6–614.8
<i>Festuca</i> sp.	616.0–618.3
<i>Deschampsia caespitosa</i>	618.9–620.7
<i>Nardus stricta</i>	626.8–629.8 (337 <sup>a</sup> )
<i>Agrostis</i> sp.	624.2–630.4 (528–535 <sup>a</sup> )
<i>Poa pratensis</i>	629.7–630.8 (539 <sup>a</sup> )
<i>Deschampsia flexuosa</i>	648.8–649.6
<i>Holcus</i> sp.	652.4

<sup>a</sup> Hsp92II 5' terminal fragment length

perature. Additionally, the peak area of diagnostic fragments allows relative quantification of each amplification product in mixed samples [10].

## Conclusions

A molecular identification key based on RFLP of the plastid *trnL* intron was successfully developed and utilised to identify a large number of small root fragments sampled from an upland grassland. This procedure could be adapted to any field system in which it is desirable to identify plant species from roots, or other plant material insufficient for morphological taxonomy. ITS sequence data can be used for identification if unexpected patterns occur. Furthermore, by employing capillary electrophoresis of fluorescently labelled *trnL* PCR products, large numbers of samples can be rapidly processed with a higher precision than agarose gel methodologies. Semi-automated throughput of > 100 samples per day at a resolution of +/- 2 bp makes this method ideally suited to the molecular characterisation of both root and associated microbes. With the ability to identify individual roots in soil we can begin to address questions of how below-ground processes influence community diversity and composition at a small scale.

## Methods

### Reference plant material

Plant material from species known to occur at the field site under investigation was collected in order to develop a *trnL* intron sequence database. Closely related species were included where possible or available. (*Agrostis vinealis*, *Deschampsia caespitosa*, *Deschampsia flexuosa*, *Festuca ovina*, *Festuca juncifolia*, *Festuca arundinaceae*, *Holcus lanatus*, *Luzula campestris*, *Nardus stricta*, *Phleum pratense*, *Poa trivialis*). The *trnL* intron sequences for *Agrostis capillaris* (AY177347), *Festuca rubra* (AY177345), *Poa pratensis* (AY177349) were available from a previous study [6].

### DNA isolation and PCR-RFLP

DNA was isolated from plant tissue samples using the CTAB method [11]. The plastid *trnL* intron was amplified from plant DNA using the primer pair c and d [12]. Amplifications were performed in 50  $\mu$ L volume containing 2  $\mu$ L of template DNA, 20 mM Tris-HCl (pH 8.4), 50 mM KCl, 10 pmoles of each primer, 100  $\mu$ M dNTPs, 2 mM MgCl<sub>2</sub> and 1 unit of Taq DNA polymerase (Invitrogen). PCR program consisted of 30 cycles (94°C for 30 s, 58°C for 1 min, 72°C for 1.5 min) on a PTC-100 programmable thermal controller (MJ Research Inc.). Each amplification reaction was analysed by electrophoresis in TBE buffer on a 1% (w/v) agarose gel and visualised under UV light after staining with ethidium bromide. PCR products were sequenced in both directions using BigDye and either the forward or reverse PCR primer and resolved on an ABI 377 automated sequencer according to the manu-

facturer's protocol (Applied Biosystems). Theoretical digests to discriminate between taxa were performed using Lasergene (DNASTAR). Fragment sizes of less than 50 bp or differences in fragment sizes of less than 20 bp were not considered informative for agarose gel electrophoresis. Theoretical restriction patterns were confirmed by digestion of PCR product with the restriction endonucleases found to be most discriminating. Digests were performed at 37°C for at least 2 h according to manufacturers' instructions. The double digest with *NlaIV* and *DdeI* was performed in Promega buffer B. *BfaI* and *NlaIV* were obtained from New England Biolabs; *DdeI*, *HinfI*, *Hsp92II* and *XmnI* from Promega. Fragments were separated on a 2% (w/v) Agarose:Metaphor agarose (FMC Bioproducts, UK) (1:1) gel in TBE buffer and visualised by staining with ethidium bromide.

### Field sampling and identification of roots

Field sampling took place on Fassett Hill at Sourhope (National Grid Reference NT 852207), an upland grassland in the Scottish Borders. Forty soil cores (10 cm diameter) were taken from a 14 m  $\times$  12 m plot. Twenty four root fragments were randomly selected from a 1 cm cube of soil from each core and frozen prior to DNA isolation. The Qiagen DNeasy 96 Plant Kit was utilised for high-throughput DNA isolation from the 960 spatially referenced root fragments following the manufacturer's instructions. DNA was stored at -20°C prior to amplification.

The *trnL* intron was amplified from root DNA, digested with appropriate enzymes as described above, and compared to the RFLP key. For roots with RFLP patterns which did not match any database taxa, the nuclear ribosomal ITS region was amplified using the same PCR protocol as for the *trnL* intron but with primers ITS4 [9], and ITS1P (AACCTTATCATTTAGAGGAAGG), newly designed to preferentially amplify grasses but not fungi. Sequencing in both directions as above and comparison to GenBank using BlastN [8] allowed identification of unknown taxa.

### Capillary electrophoresis of fluorescently-labeled *trnL* PCR products

For fluorescent detection of *trnL* PCR products the region was amplified from plant DNA as above except the forward primer was labelled at the 5' end with WellRED Beckman Dye D2-PA (Proligo). PCR products were resuspended in deionized formamide following ethanol precipitation. An aliquot of 0.5 – 2.0  $\mu$ L was added to 30  $\mu$ L SLS loading solution containing 0.1 – 0.2  $\mu$ L Size Standard 600 (Beckman-Coulter). Fluorescently labelled fragments were separated by capillary electrophoresis and detected by laser-induced fluorescence using the CEQ 8000 automated gene sequencer (Beckman-Coulter). Samples were denatured at 95°C for 2 min before injec-

tion at 4.8 kV for 40 s and separation for 70 min. Fragments were sized by comparison to the internal standard using CEQ 8000 software for Fragment Analysis. At least three samples of each taxon, previously identified by *trnL* PCR-RFLP, were analysed to assess the ability to discriminate between species by *trnL* fragment length.

### List of abbreviations

RFLP – Restriction Fragment Length Polymorphism, FFLP – Fluorescent Fragment Length Polymorphism, ITS – Internal Transcribed Spacer

### Authors' contributions

KPR drafted the manuscript and participated in field collection, DNA isolation and method development. JMD assisted with DNA isolation, polymerase chain reaction and gel electrophoresis. JPWY conceived and supervised the project. All authors read and approved the final manuscript.

### Acknowledgements

The authors would like to thank Tim Daniell, Julie Squires and Irene Watson for assistance with field collection. Barbara Smith and Celina Whalley helped with capillary electrophoresis and fragment analysis. This work was funded by the Scottish Executive Environment and Rural Affairs Department (SEERAD) MICRONET programme.

### References

1. Moore PD: **Roots of diversity.** *Nature* 2003, **424**:26-27.
2. Gielly L and Taberlet P: **The use of chloroplast DNA to resolve plant phylogenies – noncoding versus *rbcl* sequences.** *Molecular Biology and Evolution* 1994, **11**:769-777.
3. Brunner I, Brodbeck S, Buchler U and Sperisen C: **Molecular identification of fine roots of trees from the Alps: reliable and fast DNA extraction and PCR-RFLP analyses of plastid DNA.** *Molecular Ecology* 2001, **10**:2079-2087.
4. Kojoma M, Kurihara K, Yamada K, Sekita S, Satake M and Iida O: **Genetic identification of cinnamon (*Cinnamomum* spp.) based on the *trnL-trnF* chloroplast DNA.** *Planta Medica* 2002, **68**:94-96.
5. Paulsrud P, Rikkinen J and Lindblad P: **Field investigations on cyanobacterial specificity in *Peltigera aphthosa*.** *New Phytologist* 2001, **152**:117-123.
6. Vandenkoornhuysen P, Ridgway KP, Watson IJ, Fitter AH and Young JPW: **Co-existing grass species have distinctive arbuscular mycorrhizal communities.** *Molecular Ecology* in press.
7. Linder CR, Moore LA and Jackson RB: **A universal molecular method for identifying underground plant parts to species.** *Molecular Ecology* 2000, **9**:1549-1559.
8. Altschul SF, Madden TL, Schäffer AA, Zhang J, Zhang Z, Miller W and Lipman DJ: **Gapped BLAST and PSI-BLAST: a new generation of protein database search programs.** *Nucleic Acids Research* 1997, **25**:3389-3402.
9. White TJ, Bruns T, Lee S and Taylor J: **Amplification and direct sequencing of fungal ribosomal RNA genes for phylogenetics.** In: *Protocols: a Guide to Methods and Applications* Edited by: G Innis MA, DH Sninsky JJ, White TJ. San Diego: Academic Press; 1990:315-324.
10. Leuders T and Friedrich MW: **Evaluation of PCR amplification bias by terminal restriction fragment length polymorphism analysis of small-subunit rRNA and *mcrA* genes by using defined template mixtures of methanogenic pure cultures and soil DNA extracts.** *Applied and Environmental Microbiology* 2003, **69**:320-326.
11. Gardes M and Bruns TD: **ITS primers with enhanced specificity for basidiomycetes – application to the identification of mycorrhizae and rusts.** *Molecular Ecology* 1993, **2**:113-118.
12. Taberlet P, Gielly L, Pautou G and Bouvet J: **Universal primers for amplification of 3' noncoding regions of chloroplast DNA.** *Plant Molecular Biology* 1991, **17**:1105-1109.
13. Kumar S, Tamura K, Jakobsen IB and Nei M: **MEGA2: Molecular Evolutionary Genetics Analysis software.** *Bioinformatics* 2001, **17**:1244-1245.

Publish with **BioMed Central** and every scientist can read your work free of charge

"BioMed Central will be the most significant development for disseminating the results of biomedical research in our lifetime."

Sir Paul Nurse, Cancer Research UK

Your research papers will be:

- available free of charge to the entire biomedical community
- peer reviewed and published immediately upon acceptance
- cited in PubMed and archived on PubMed Central
- yours — you keep the copyright

Submit your manuscript here:  
[http://www.biomedcentral.com/info/publishing\\_adv.asp](http://www.biomedcentral.com/info/publishing_adv.asp)

