



This is a repository copy of *Meteorological impacts of a novel debris-covered glacier category in a regional climate model across a Himalayan catchment*.

White Rose Research Online URL for this paper:

<https://eprints.whiterose.ac.uk/id/eprint/235714/>

Version: Published Version

---

**Article:**

Potter, E.R. [orcid.org/0000-0001-5273-1292](https://orcid.org/0000-0001-5273-1292), Orr, A., Willis, I.C. et al. (2 more authors) (2021) Meteorological impacts of a novel debris-covered glacier category in a regional climate model across a Himalayan catchment. *Atmospheric Science Letters*, 22 (3). e1018. ISSN: 1530-261X

<https://doi.org/10.1002/asl.1018>

---

**Reuse**

This article is distributed under the terms of the Creative Commons Attribution (CC BY) licence. This licence allows you to distribute, remix, tweak, and build upon the work, even commercially, as long as you credit the authors for the original work. More information and the full terms of the licence here:

<https://creativecommons.org/licenses/>

**Takedown**

If you consider content in White Rose Research Online to be in breach of UK law, please notify us by emailing [eprints@whiterose.ac.uk](mailto:eprints@whiterose.ac.uk) including the URL of the record and the reason for the withdrawal request.



[eprints@whiterose.ac.uk](mailto:eprints@whiterose.ac.uk)  
<https://eprints.whiterose.ac.uk/>

## RESEARCH ARTICLE

Atmospheric Science Letters



# Meteorological impacts of a novel debris-covered glacier category in a regional climate model across a Himalayan catchment

Emily R. Potter<sup>1,2</sup> | Andrew Orr<sup>1</sup> | Ian C. Willis<sup>2</sup> | Daniel Bannister<sup>1</sup> | Patrick Wagnon<sup>3</sup>

<sup>1</sup>British Antarctic Survey, Cambridge, UK

<sup>2</sup>Scott Polar Research Institute, University of Cambridge, Cambridge, UK

<sup>3</sup>Univ. Grenoble Alpes, CNRS, IRD, IGE, Grenoble, France

## Correspondence

Emily R. Potter, University of Leeds,  
Seminary St, Woodhouse, Leeds  
LS2 9JT, UK.  
Email: e.r.potter@leeds.ac.uk

## Funding information

National Environmental Research  
Council, Grant/Award Number: NE/  
L002507/1; Labex OSUG@2020; French  
National Research Agency (ANR) through  
ANR-13-SENV-0005-04-PRESHINE;  
French Observatory CRYOBS-CLIM

## Abstract

Many of the glaciers in the Nepalese Himalaya are partially covered in a layer of loose rock known as debris cover. In the Dudh Koshi River Basin, Nepal, approximately 25% of glaciers are debris-covered. Debris-covered glaciers have been shown to have a substantial impact on near-surface meteorological variables and the surface energy balance, in comparison to clean-ice glaciers. The Weather Research and Forecasting (WRF) model is often used for high-resolution weather and climate modelling, however representation of debris-covered glaciers is not included in the standard land cover and soil categories. Here we include a simple representation of thick debris-covered glaciers in the WRF model, and investigate the impact on the near-surface atmosphere over the Dudh Koshi River Basin for July 2013. Inclusion of this new category is found to improve the model representation of near-surface temperature and relative humidity, in comparison with a simulation using the default category of clean-ice glaciers, when compared to observations. The addition of the new debris-cover category in the model warms the near-surface air over the debris-covered portion of the glacier, and the wind continues further up the valley, compared to the simulation using clean-ice. This has consequent effects on water vapour and column-integrated total water path, over both the portions of the glacier with and without debris cover. Correctly simulating meteorological variables such as these is vital for accurate precipitation forecasts over glacierized regions, and therefore estimating future glacier melt and river runoff in the Himalaya. These results highlight the need for debris cover to be

**List of Abbreviations:** AWS, automatic weather station; LSM, land surface model; WRF, weather research and forecasting (model); WPS, WRF pre-processing system.

This is an open access article under the terms of the Creative Commons Attribution License, which permits use, distribution and reproduction in any medium, provided the original work is properly cited.

© 2020 The Authors. *Atmospheric Science Letters* published by John Wiley & Sons Ltd on behalf of Royal Meteorological Society.

included in high-resolution regional climate models over debris-covered glaciers.

#### KEYWORDS

debris-covered glaciers, Himalaya, mountain meteorology, WRF

## 1 | INTRODUCTION

Debris-covered glaciers consist of ice covered by a layer of loose rock, over the full width and at least part of the length of the glacier (Kirkbride, 2011; Anderson and Anderson, 2016). In the Himalaya, 16.9% of the glaciers are debris-covered, and this is set to increase with future glacier melt (RGI Consortium, 2015; Scherler *et al.*, 2018). Much of this debris cover is thick debris, for example on Lirung Glacier and Ngozumpa Glacier, both in Nepal, debris thickness is measured up to 2.3 m and 8 m, respectively (McCarthy *et al.*, 2017; Nicholson *et al.*, 2018). Correctly simulating the meteorology above debris-covered glaciers is necessary for accurate inputs into hydrological and glaciological models, and for local-scale forecasting, which are essential for predicting future energy and water security in the Himalaya (Eriksson *et al.*, 2009).

The substantial and varying effects of glacier debris cover on near-surface meteorological variables have been recognized in recent years through a series of observational studies. Higher surface temperatures, and a larger amplitude in the diurnal cycle of near-surface temperature have been found over debris-covered glaciers, compared to clean-ice glaciers (Steiner and Pellicciotti, 2016; Yang *et al.*, 2017; Nicholson and Stiperski, 2020). It has been shown that after heating during the day, debris cover greater than 0.05 m returns the energy to the atmosphere at night, rather than heating the ice below (Reznichenko *et al.*, 2010; Nicholson and Benn, 2013). Differences have also been found in near-surface wind speed and incoming short wave radiation between debris-covered and clean-ice glaciers (Yang *et al.*, 2017). High-resolution turbulence-resolving models have also been used to find that increasing roughness lengths over debris-covered glaciers increases spatial heterogeneity of the surface heat flux (Bonekamp *et al.*, 2019), but such models are not suitable for regional climate modelling. Observational and turbulence-resolving modelling studies such as these are vital to give an indication of how debris cover affects near-surface meteorology on different glaciers. However, regional atmospheric models are also needed, as they allow for a more direct comparison between the effects of debris-covered and clean-ice glaciers on the atmosphere than observations, through sensitivity experiments. Regional models are also useful to

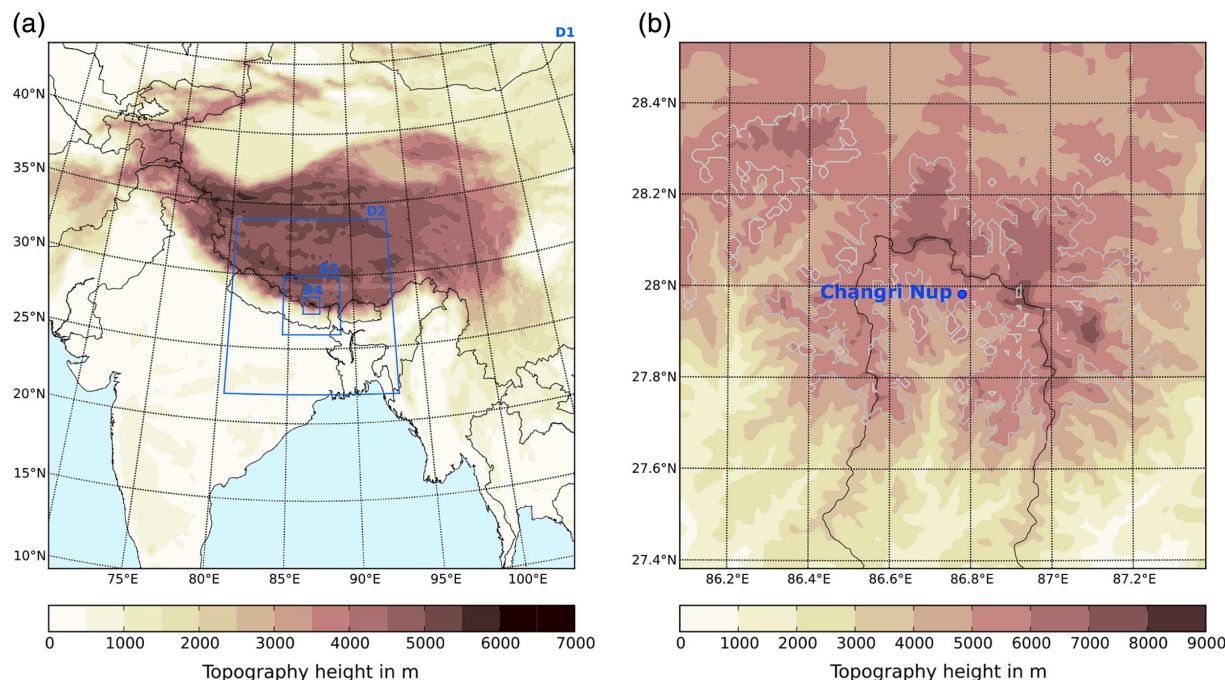
compare a wider range of meteorological and surface parameters than are available from observations, and over a much wider area.

There has only been one attempt so far to include a representation of debris-covered glaciers in a regional atmospheric model (Collier and Immerzeel, 2015). This was introduced as part of a coupled atmosphere-glacier model, using the Weather Research and Forecasting (WRF) model for the atmosphere modelling. As such, the surface fluxes were computed by the glacier model (Collier *et al.*, 2014), and debris characteristics such as thickness were needed as a model input. The model was tested over the Karakoram and compared to satellite data, and Collier *et al.* (2015) found that near-surface air temperatures were substantially improved, and up to 20°C higher at some elevations in the model run with the addition of debris cover, compared to a corresponding clean-ice glacier model run. In addition, wind speed was reduced and the daytime wind direction changed from katabatic in the clean-ice model run to anabatic in the model run with debris cover. Coupled models are considerably more computationally expensive to run than atmosphere-only models, and therefore in addition to the model proposed by Collier *et al.* (2015), there is a need for a simple representation of debris-cover within the existing land and soil categories in the WRF model.

This study presents a method for adding a simple representation of thick debris-cover to the WRF model with the Noah Land Surface Model used as the land surface scheme. The model results are compared to those from a model with clean-ice glaciers, against observations at a weather station on Changri Nup Glacier (in the Dudh Koshi River Basin, Nepal). Furthermore, the two model runs are compared over the entire Dudh Koshi River Basin, to establish more generally the effects of adding debris-cover to the WRF model on the near-surface meteorology.

## 2 | METHODS

In this study, the WRF model is run at 1 km resolution with hourly output, for July 2013 over the Dudh Koshi River Basin, Nepal (Figure 1). The model is run twice, with and without debris-cover over part of the glacierized region. The first run uses the default clean-ice glacier



**FIGURE 1** The geographical extent of the four WRF model domains (D1 to D4) (a) and the innermost 1 km domain (D4) (b). Filled contours represent the topographic height (m), and (b) shows the watershed outline of the Dudh Koshi River Basin (solid black line), the extent of the permanent snow and ice in the model (solid grey line), and the location of the automatic weather station used in this study, at Changri Nup (blue filled circle). Adapted from Potter *et al.*, (2018)

mask (“clean-ice run”), and the second includes the new debris-cover land cover and soil category (“debris-cover run”) as described below. The model output is compared to near-surface observations of air temperature, wind speed, and relative humidity from an automatic weather station (AWS) on the debris-covered area of Changri Nup glacier, located at 27.98°N, 86.87°E (Figure 1). The data at Changri Nup were collected by the glacioclim group (Université Grenoble Alpes), and more information can be found at <https://glacioclim.osug.fr/spip.php?article75>. Observations are missing from the AWS for each morning, from about 02:00 to 07:00 LT.

To compare the model output against the data at the AWS at Changri Nup, the nearest model grid point to the AWS is taken (less than 500 m away from the AWS both latitudinally and longitudinally). The model temperature at 2 m is adjusted to account for the difference between the model elevation (5,432 m asl [meters above sea level]) and actual AWS elevation (5,363 m asl), using the average 2 m air temperature lapse rate calculated over the entire model domain at each hour (the slope of a linear regression between air temperature at 2 m and elevation). The observed wind is adjusted from the observational height of around 2 m to the model height of 10 m using a logarithmic profile, using a roughness length of 0.02 m and assuming neutral stability (Whiteman, 2000). This increases the maximum average daily wind speed by approximately  $0.5 \text{ ms}^{-1}$ .

## 2.1 | Atmospheric model description

The WRF model version 3.8.1 (Skamarock *et al.*, 2008) is run with four nested domains, with resolutions of 27, 9, 3 and 1 km (Figure 1). There are 50 vertical levels in all model domains, from the surface to 50 hPa. The topographical input comes from the Shuttle Radar Topography Mission (Jarvis *et al.*, 2008), at 90 m resolution. The permanent snow and ice (i.e., the glaciers) in the WRF model have been updated using the Randolph Glacier Inventory (RGI) (RGI Consortium, 2015), as suggested by Collier and Immerzeel (2015), in both the clean-ice run and the debris-cover run. At present, the RGI does not record debris-covered glacier outlines separately from clean-ice glaciers. The outer domain of the model is forced using ERA-Interim at the lateral boundary (Dee *et al.*, 2011), every 6 hr. Both model runs are run from 1st to 31st July 2013, with a 2-week spin-up period from 16th June. The model setup is the same as that described in Potter *et al.* (2018), with the exception that the land surface scheme is changed to the Noah LSM (land surface model) scheme (Chen and Dudhia, 2001), instead of the Noah MP (Multi-Physics) scheme. While Noah MP provides a better representation of snow and ice processes (Niu *et al.*, 2011), Noah LSM consists of a simpler framework in which to implement the debris-cover addition. The full model setup can be found in Table S1.



The default landcover categories used in this study are provided by the U.S. Geological Survey (USGS) dataset, which contains 24 land cover categories (grassland, mixed forest, permanent snow or ice [“glaciers”, in this instance], etc.). There are also 16 soil/rock texture categories (silt, clay, sand, etc.). In the Noah LSM scheme in the WRF model, values for surface parameters such as albedo, surface roughness, and vegetation parameters are assigned to each of the land cover categories in the VEGPARM.TBL table and fixed for summer and winter. These are then modified by the Noah LSM scheme based on factors such as snowfall during the model run. In addition, subsurface soil texture properties such as porosity and hydraulic conductivity are assigned through the SOILPARM.TBL table (note that here “soil” includes any subsurface properties, including bedrock and debris). In the Noah LSM scheme, there is a separate regime for calculating surface fluxes over glaciers (for example, it stipulates a maximum surface temperature of 0°C over the glacier), which is switched off for the debris-cover addition. Different land surface schemes in the WRF model calculate surface fluxes in different ways, and may not use the VEGPARM.TBL and SOILPARM.TBL values. For example, the method used here, which is applicable to the Noah LSM scheme, is not appropriate for use with the Noah-MP scheme.

For this simple representation of debris cover in the WRF model, the debris is assumed to occupy the full soil depth in the WRF model, which extends to 255 cm below the surface (i.e., there is no representation of the ice underneath). As such, this method best represents thick debris cover, as in general thick debris cover is thought to provide insulation between the air and the glacier ice below the debris cover (Reznichenko *et al.*, 2010; Nicholson and Benn, 2013).

As such, there are two stages necessary to add a debris-covered glacier category to the WRF model. First, a debris mask is created to input as a land cover and soil category, which is added to the WRF Preprocessing System (WPS). Second, values are chosen for the land cover and soil parameters which represent debris-covered glaciers, and these values are added to the VEGPARM.TBL and SOILPARM.TBL tables.

## 2.2 | Creating the debris-covered glacier category

### 2.2.1 | Defining the debris cover mask

Areas exceeding a certain brightness threshold associated with clean-ice are automatically identified using a cloud free satellite image from Landsat 8, from April 2017. This creates an approximation for the clean-ice area of the glaciers, which is superimposed onto (and cropped by) the

glacier area depicted in the RGI. Thus the glacier area is split into a clean-ice area, with the remaining part being debris-covered area. These two new glacier outlines replace the original glacier mask in the 24 USGS land cover categories. A few pixels were manually adjusted to match the surface type, where it was known. Due to the relatively coarse resolution of the model, compared to the width of the glaciers, we did not adjust fine details in the debris-cover mask as these would not be visible at the 1 km resolution. In addition, differences in the glacier cover between recent years would not be apparent at this resolution. See the supporting information section 2 (Figure S1) for more details.

### 2.2.2 | Adding the debris cover properties

For the purposes of this study, the parameters for debris cover in the VEGPARM.TBL table are chosen assuming that the debris cover is entirely barren of vegetation, and thus the parameters relating to vegetation are chosen to match those for snow and ice (as there are no other categories that assume the land is entirely barren). The other values used in VEGPARM.TBL have been altered based on measurements reported in previous literature on debris-covered glaciers. A summary of these values, and the reasoning for them, is given in Table 1. The values for SOILPARM.TBL have also been chosen based on previous literature where possible, however few soil properties have been measured over debris-covered glaciers. Those that have are also given in Table 1. Full justification for the parameter choices are given in supporting information section 3. The full VEGPARM.TBL and SOILPARM.TBL can be found at [https://github.com/Empott/debris\\_cover\\_in\\_WRF](https://github.com/Empott/debris_cover_in_WRF). Note that it is not possible to compare these values directly to those over the clean-ice glacier in the WRF model, due to the separate glacier scheme used by the Noah LSM scheme. However, the albedo is likely to be substantially lower, and the roughness length higher, in the new debris-cover category, compared to the clean-ice glacier.

## 3 | RESULTS

### 3.1 | Comparison to observations

Both of the model runs show a cold bias in the daytime average air temperature at 2 m compared to the observations at Changri Nup weather station, but the debris-cover run shows an improvement over the clean-ice run, and the two runs are significantly different at 95 %, both

**TABLE 1** The new debris-covered glacier category values

Variable name	Explanation	Value for debris-cover	Value taken from	Reasoning
<i>VEGPARM.TBL variables</i>				
EMISSMIN/ MAX	Surface emissivity	0.94 (fraction 0–1)	Brock <i>et al.</i> (2010)	Measured on Miage Glacier, Italy
ALBEDOMIN/ MAX	Surface albedo	0.2 (fraction 0–1)	Inoue and Yoshida (1980) Takeuchi <i>et al.</i> (2000) Kayastha <i>et al.</i> (2000) Nicholson and Benn (2013)	The studies cited here are all taken from glaciers in the Dudh Koshi Valley and all include 0.2 in the measured albedo range.
MAXALB	Upper bound on maximum albedo over deep snow	70 (%)	Brock <i>et al.</i> (2010)	Measured on Miage Glacier, Italy
Z0MIN/MAX	Roughness length	0.02 (m)	Quincey <i>et al.</i> (2017)	Between two values observed over the Khumbu Glacier, Dudh Koshi Valley (0.0184, 0.0243).
SNUP	Threshold water-equivalent snow depth that implies 100% snow cover	0.03 (m)		Taken to be the same as the value for scrubland.
<i>SOILPARM.TBL variables</i>				
MAXSMC	Porosity	0.33 (fraction 0–1)	Nicholson and Benn (2013)	Calculated based on measured grain size on Ngozumpa Glacier, Dudh Koshi Valley
SATDW	Saturation soil hydraulic conductivity	$4.63 \times 10^{-4} \text{ m s}^{-1}$	Nicholson <i>et al.</i> (2018)	Measured on Ngozumpa Glacier, Dudh Koshi Valley
QTZ	Quartz content	0.28 (fraction 0–1)	Casey <i>et al.</i> (2011)	Measured on Ngozumpa Glacier, Dudh Koshi Valley

*Note:* The variables in VEGPARM.TBL with “MIN/MAX” are referring to the minimum/maximum over the year (i.e., accounting for seasonal variation, which does not occur over the debris cover as there is no plant growth). All other values needed for VEGPARM.TBL are vegetation related, and taken to be the same as those for “snow and ice”. All other variables for SOILPARM.TBL are calculated as described in supporting information section 3.

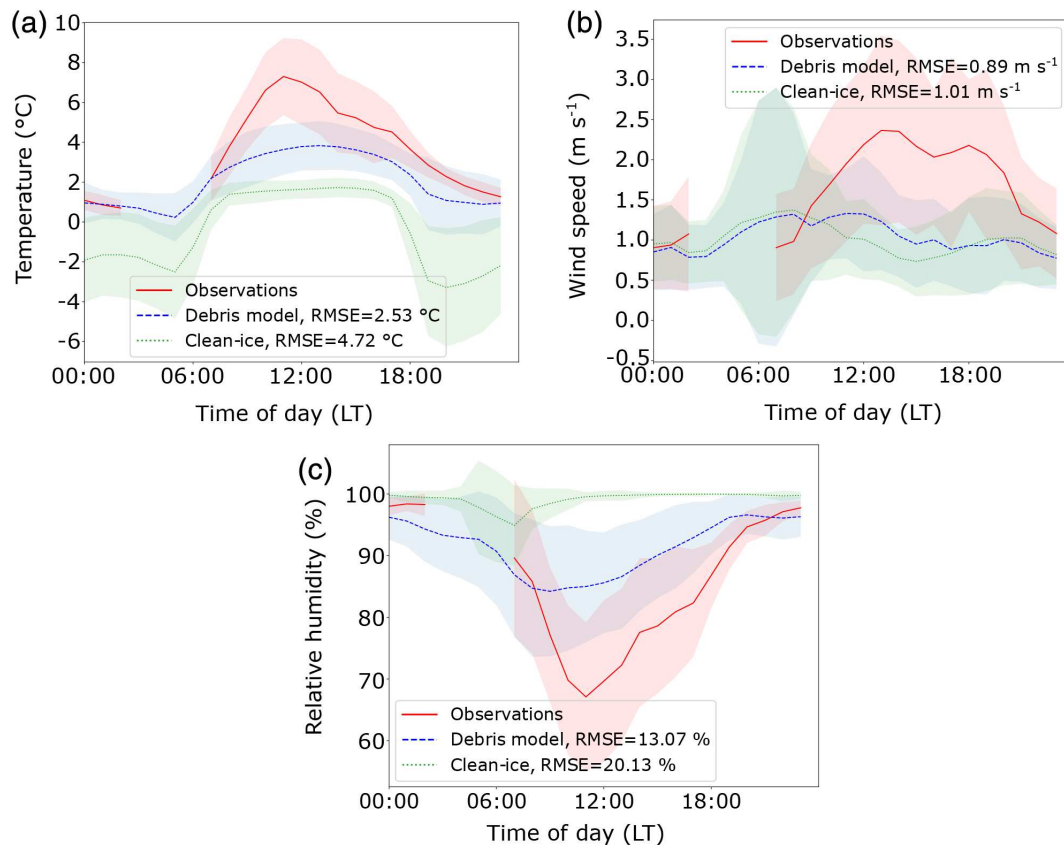
in the day and at night. There is a well-defined maximum daily air temperature of just over 7 °C in the observations, and a less clear maximum daily temperature of approximately 4 °C in the debris-cover run, and under 2 °C in the clean-ice run (Figure 2a). The debris-cover run shows very little bias at night, unlike the clean-ice run which is approximately 2 °C too cold. While the amplitude of the diurnal cycle appears to have been reduced in the debris-cover run compared to the clean-ice run, this is likely to be due to this unrealistic cold bias at night in the clean-ice run at Changri Nup.

The WRF model fails to capture the diurnal cycle in wind speed at 10 m (Figure 2b), although the debris-cover run has the lowest RMSE when compared with observations ( $0.89 \text{ ms}^{-1}$ , compared to  $1.01 \text{ ms}^{-1}$  in the clean-ice run). However, the low wind speed and the strong dependence of the wind on very local topography makes comparisons between the model and observations difficult. In addition, the wind comes from a range of

directions which the model does not perfectly capture, which may be a partial cause of the inaccurate model wind speed (not shown).

At night the relative humidity at 2 m is relatively well represented in both model runs (Figure 2c). During the day, both model runs are too humid, and the peak minimum daytime relative humidity is approximately 3 hr early. However, the debris-cover run shows a statistically significant improvement over the clean-ice run, with an RMSE of 13.07 %, compared to 20.13 % in the clean-ice run. The model humid bias may also be partially related to the differences between the model and observed wind speed and direction. The debris-cover run also substantially improves the representation of surface incoming and outgoing longwave and shortwave radiation during the day, compared to the clean-ice run, at Changri Nup AWS (see supporting information section 4 [Figure S2]).

No attempt was made to tune the parameters in the debris-cover category to the observations at Changri Nup,



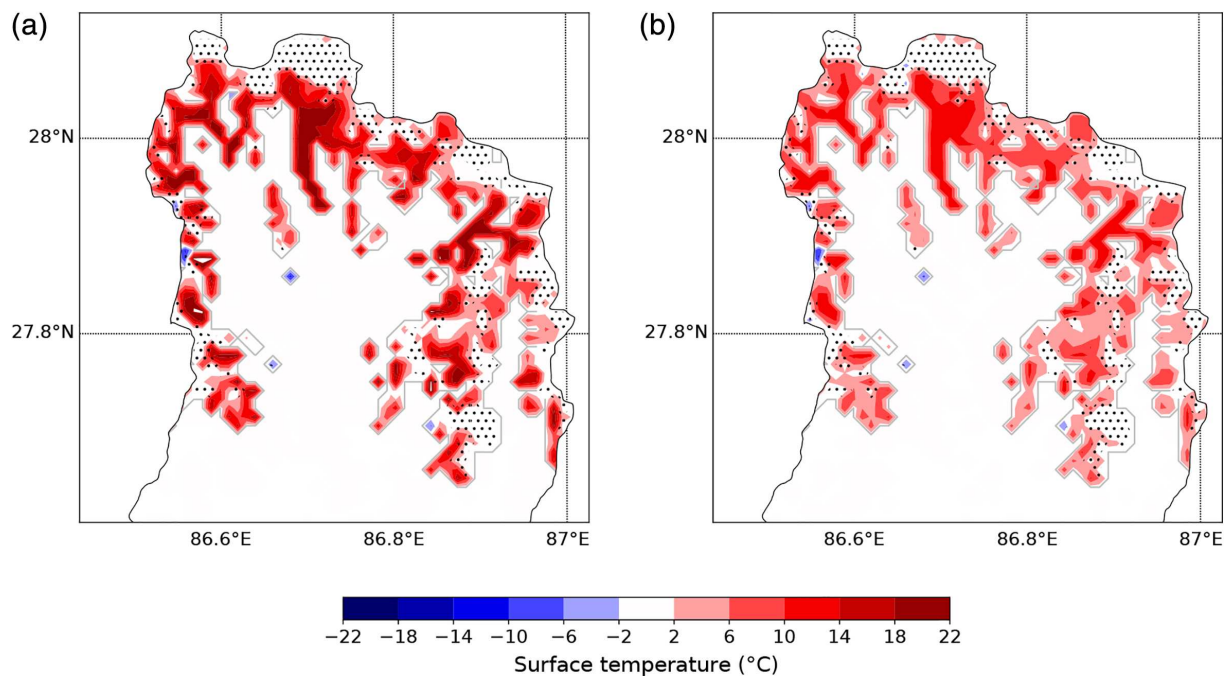
**FIGURE 2** The average diurnal air temperature at 2 m (a), wind speed at 10 m (b) and relative humidity at 2 m (c) for July 2013 at the Changri Nup AWS, in local time (LT). The observations are shown (red solid line), along with the two model runs: the original clean-ice category (clean-ice; green dotted line), and the new debris-cover category (debris; blue dashed line). Note that data are missing from the observations for each morning, from about 02:00 to 07:00 LT. Shading indicates one standard deviation from the mean. The root mean square error (RMSE) values between each model run and the observations are also shown

to avoid overcompensating for underlying biases in the WRF model, unrelated to the surface type. However, a number of sensitivity tests were performed to examine the sensitivity of the WRF model to variations in albedo, emissivity and surface roughness over the debris-covered area. Varying each of these parameters in the debris-cover run made only a small difference to the model output, compared to the difference between the debris-cover run and clean-ice run (see supporting information section 5 [Table S2]). As such, it is likely that many of the improvements described above over the debris-covered glacier result from removing the flag which indicates to the Noah LSM that the land cover is a glacier, and hence removing the constraint that the glacier surface cannot be above 0 °C, for example. In addition, there are many small snowfall events in the debris-cover (and clean-ice) run, so the debris at Changri Nup is covered with a thin layer of snow for most of the model run. This is likely to diminish the effects of altering albedo, emissivity and surface roughness.

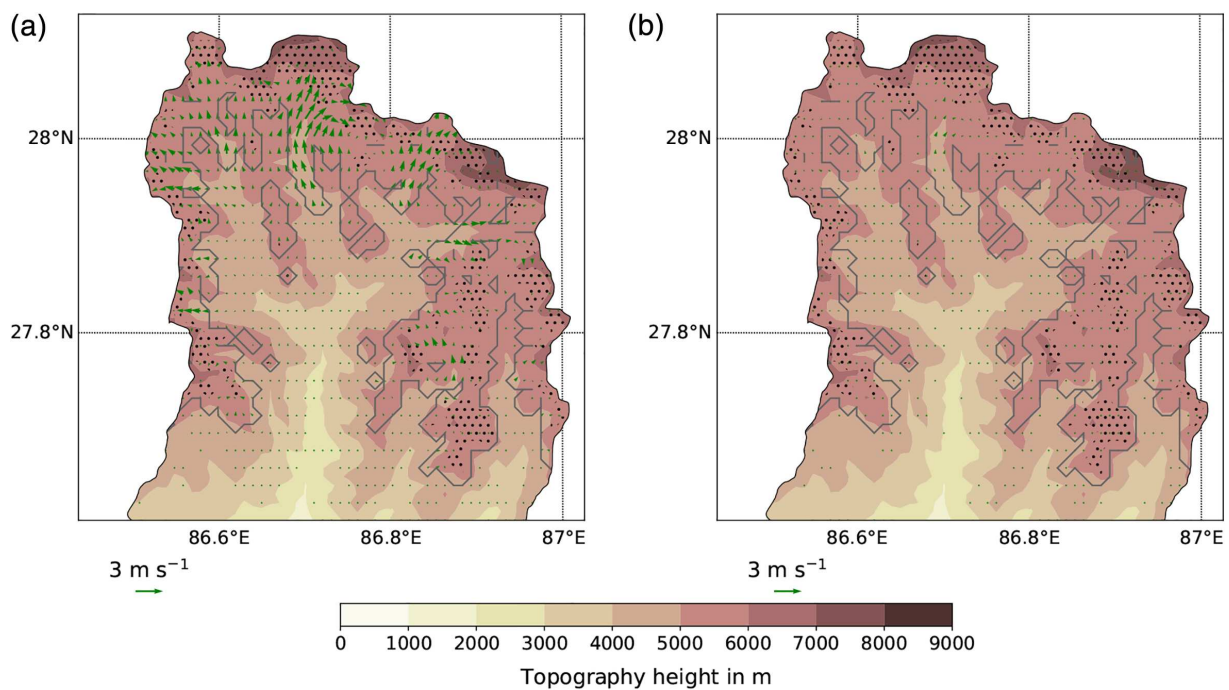
### 3.2 | Effects of adding debris cover to the WRF model

The output from the debris-cover run and the clean-ice run are further compared across all the glacierized regions of the Dudh Koshi River Basin. Note that Figures 3–7 only show areas where the debris-cover run is significantly different (at 95 %) from the clean-ice run, as measured by a *t* test and a bootstrap test (see Potter *et al.* (2018)).

The debris-cover run substantially increases the surface temperature compared to the clean-ice run over the debris-covered areas of the glacier (Figure 3). The largest increases occur during the day, where the surface temperature is increased by over 18 °C in some areas (Figure 3a). On average, the surface temperature increases from −0.81 °C in the clean-ice run to 10.63 °C in the debris-cover run, over the debris-covered areas of the glaciers during the day (values averaged over all the daytime hours in July, and all the pixels where there is debris



**FIGURE 3** The significant differences in surface temperature between the debris-cover run and the clean-ice run (i.e., debris-cover run minus clean-ice run). The grey outline shows the edge of the glacier in the model, and the stippling shows the clean-ice areas of the glaciers. The average daytime (06:00–18:00 LT) values over July 2013 are shown in (a), average nighttime (19:00–05:00 LT) values are shown in (b). Note that the domain has been cropped to show only the glaciers and their immediate surrounding areas, where almost all the significant differences occur

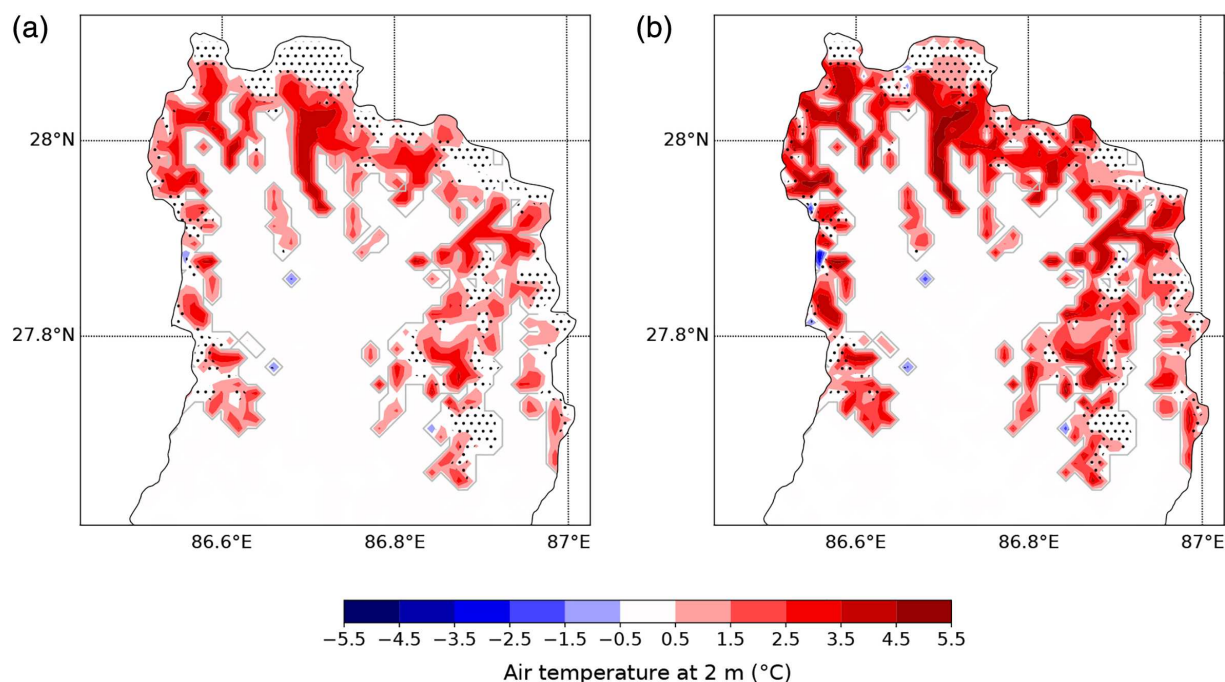


**FIGURE 4** As for Figure 3, but for the significant changes to wind velocity (green vectors). For clarity, every second vector in the south–north direction is shown. The underlying contours show the model topography

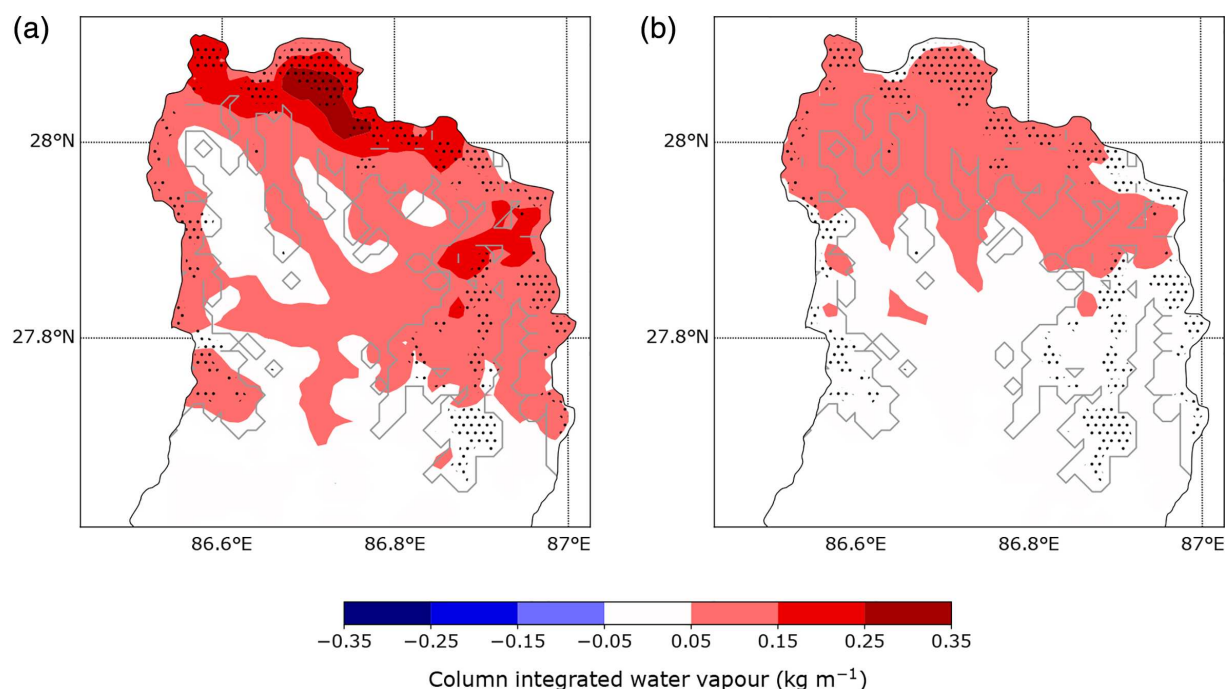
cover in the debris-cover run, for the two runs). There is also an increase at night (from an average of  $-7.53^{\circ}\text{C}$  in the clean-ice run to  $0.23^{\circ}\text{C}$  in the debris-cover run, over

the areas that are debris covered in the debris-cover run) suggesting that the debris cover retains heat past sunset (Figure 3b), and that overall the amplitude of the diurnal





**FIGURE 5** As for Figure 3, but for the air temperature at 2 m

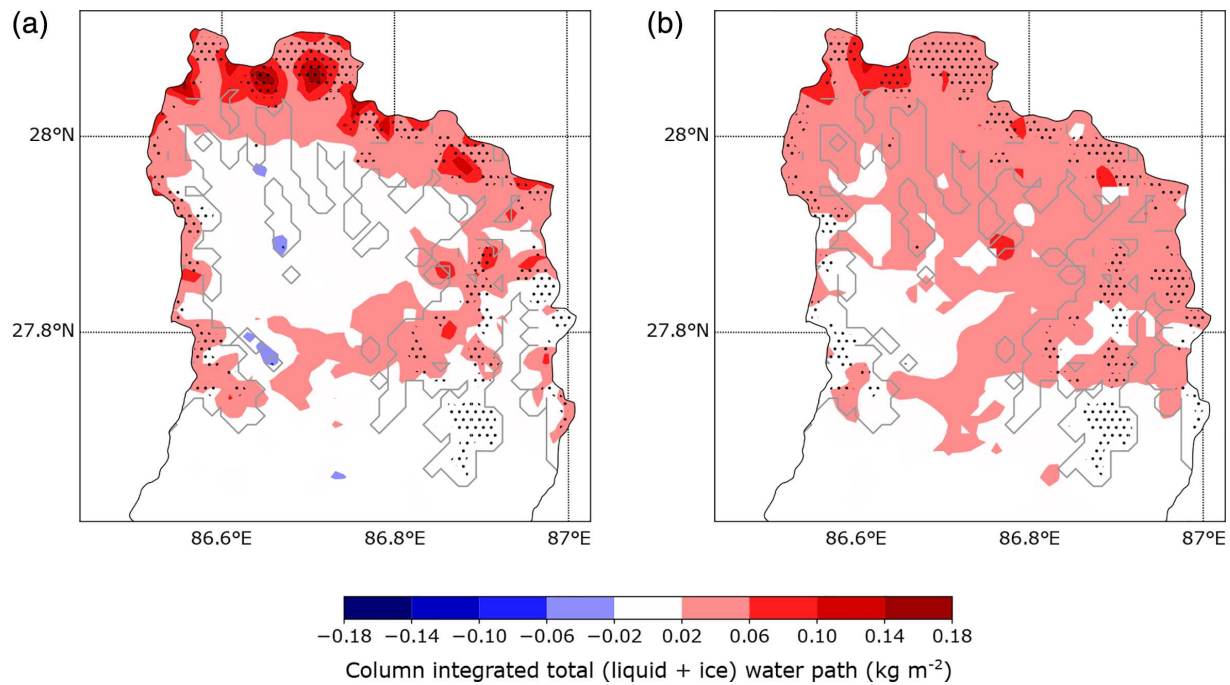


**FIGURE 6** As for Figure 3, but for the column integrated water vapour

cycle is increased, compared to clean-ice glaciers. Clean-ice glaciers can only reach a maximum temperature of around 0 °C in the Noah LSM scheme, so this increase is to be expected.

In the clean-ice run, the average wind at 10 m is up-valley during the day, with the strongest winds at the bottom of the valley, becoming weaker over the higher,

glacierized regions (not shown). At night, there is a similar pattern with much weaker up-valley winds. The increase in surface temperature over the debris-covered areas of the glacier in the debris-cover run is consistent with a temperature gradient between the warmer surface and the cooler air at the same elevation away from the surface, and therefore a horizontal pressure difference.



**FIGURE 7** As for Figure 3, but for column-integrated total (liquid + ice) water path

Over clean ice glaciers, this temperature gradient is likely to be much weaker, or the other way around. The temperature gradient in the debris-cover run is likely to lead to the simulated increase in upslope winds over the debris-covered ice seen in Figure 4. The increase in upslope winds is largest during the day (Figure 4a), with an average daytime increase in wind speed of  $1.8 \text{ ms}^{-1}$  in some locations.

The increase in surface temperature is also seen in the air temperature at 2 m (Figure 5), however on average the temperature at 2 m increases more at night than during the day ( $2.89^\circ\text{C}$  and  $1.86^\circ\text{C}$  over the debris-covered areas of the glaciers, respectively) with the addition of the debris cover, which is in contrast to the changes in surface temperature. This is also seen in the diurnal cycle at Changri Nup (Figure 2a). This may be due to the increase in near-surface wind during the day causing more mixing than at night, transferring heat away from the near surface.

The increase in up-valley winds is consistent with a transport of water vapour further up the valley. There is an increase in column-integrated water vapour (calculated by multiplying the dry air density by the vapour mixing ratio and integrating over the column [Orr *et al.*, 2017; Cossu and Hocke, 2014]) over parts of both the debris-covered and clean ice glaciers, in the debris-cover run compared to the clean-ice run during the day (Figure 6a), particularly evident at the boundary between the debris-cover and the clean-ice glaciers, approximately where there is a large increase in daytime winds.

There is also an increase in column-integrated total (liquid + ice) water path (calculated as for vapour, then by summing cloud droplets, rain particles, ice crystals, snow particles and graupel particles) over some of the glacierized areas during the day, in the debris-cover run compared to the clean-ice run (Figure 7a). The average increase is small, but in some places over the clean ice areas the increase is over  $0.16 \text{ kg m}^{-2}$ , which is over 50% of the clean-ice daytime average at that location (Figure 7a). This is likely due to both the increase in water vapour, and the convergence of the horizontal wind occurring between the debris-covered and clean-ice areas of the glaciers during the day. This leads to an increase in vertical wind (not shown), and therefore cloud particle formation. It is not clear what causes the very small increase in water vapour and total water path over the unglacierized areas of the valley. While these may represent a real phenomenon, they may also be due to the sensitivity of the WRF model to small changes.

## 4 | DISCUSSION AND CONCLUSIONS

This study presents a new method for adding a representation of thick debris-covered glaciers into the WRF model with the Noah LSM land surface scheme. A model run with the new debris-covered glacier land cover and soil category (debris-cover run) is compared to a model run with the default clean-ice glacier land cover category

(clean-ice run), for the topographically-complex Dudh Koshi River Basin, for July 2013. The debris-cover run is an improvement over the clean-ice run, when outputs are compared to observations at Changri Nup of air temperature at 2 m. Although there are biases in the WRF model in relative humidity at 2 m and wind speed at 10m, the debris-cover run does show an improvement, which we would expect to remain if the underlying WRF model biases were not present. To fully test the new debris-cover category, the model should be tested over a range of different areas, and over a longer time period (in particular for all seasons), which is beyond the scope of this study. It would be useful to compare the simple method described here directly with the more computationally-expensive coupled model proposed by Collier *et al.* (2015), to determine whether the coupled model reduces the biases seen here compared to observations, or whether these come from the WRF model itself. However, the results presented here suggest that the addition of the debris-cover category improves the ability of the WRF model to accurately represent the weather and climate over glacierized valleys in the Himalaya. As such, a simple uncoupled model may be adequate to represent the effects of debris-cover on the near-surface meteorology when only the atmospheric data are needed, as opposed to information about sub-surface glacier melting.

Output from the two model runs are compared more widely over the Dudh Koshi River Basin. The addition of the debris cover has an effect not just over the debris-cover glacier areas, but also over some of the clean-ice areas (where the land cover category is unchanged). Surface temperature is increased over the debris-cover areas in the debris-cover run compared to the clean-ice run. These findings agree with those of Collier *et al.* (2015), who compared debris-covered and clean-ice versions of the WRF model as part of a coupled atmosphere-glacier model over a river basin in the Karakoram region. Both the present study and that of Collier *et al.* (2015) find an increase in surface temperature of around 20 °C in some locations, between clean-ice and debris-cover runs. An increase in surface temperature was also found by Reid *et al.* (2012), who examined the effects of adding debris-cover to a glacier model over a glacier in Switzerland.

In this study, the increase in surface temperature caused by adding debris cover to the model leads to an increase in the upslope wind speed at 10 m over the debris-covered areas. This is in contrast to the findings of Collier *et al.* (2015), who found that the increase in roughness length over the debris-cover slowed the wind speed at 10 m. This difference in findings could be due to the different representations of debris-cover, or to

the differing magnitudes of the opposing effects of increased temperatures and increased surface roughness. It could also be due to differing initial climatic conditions, as Collier *et al.* (2015) found sustained katabatic winds in the clean-ice run, which are not present in this study. As such, debris-cover may affect the wind speed over glaciers differently in different regions, particularly over glaciers with different topographies or climatic regimes. The increase in upslope wind has consequent effects on other meteorological variables, by driving water vapour further up the valley and increasing the column-integrated total water path over the clean-ice areas to the north of the valley. While the effects discussed here are representative of the monsoon season in the region, the effects of adding debris cover are likely to differ in the dry seasons.

This study demonstrates the importance of including debris-covered glaciers in high-resolution atmospheric models over debris-covered glacier areas, and presents a simple method for doing so. The effects of adding debris cover to regional atmospheric models should be investigated further, over a range of different glaciers and valleys in the Hindu Kush Karakoram Himalaya region.

## ACKNOWLEDGEMENTS

We very much appreciate the comments from the editor Dr Alessandro Dosio and two anonymous reviewers, which helped to improve this manuscript. Many thanks to Dr Kimberly Casey and Dr Joseph Aslin for the very helpful discussions about quartz content of debris-covered glaciers, Dr Catriona Fyffe for her help with debris-covered glacier soil properties and hydrology, and to Dr Francesca Pellicciotti for the initial discussions around this study. The Changri Nup AWS data collection was carried out within the framework of the Ev-K2-CNR Project in collaboration with the Nepal Academy of Science and Tribhuvan University (Kathmandu). The model data used in this study can be found at <https://catalogue.ceda.ac.uk/uuid/928e62c5a1464b578f78db9a244575a5>, and the VEGPARM.TBL and SOILPARM.TBL files can be found at [https://github.com/Empott/debris\\_cover\\_in\\_WRF](https://github.com/Empott/debris_cover_in_WRF). The majority of this work was conducted under a Natural Environment Research Council grant for the Cambridge Earth System Science Doctoral Training Partnership, grant number NE/L002507/1. Changri Nup AWS has been operated and funded by the French Observatory CRYOBS-CLIM now part of the IR OZCAR, the French National Research Agency (ANR) through ANR-13-SENV-0005-04-PRESHINE, and by a grant from Labex OSUG@2020 (Investissements d'avenir—ANR10 LABX56).



## CONFLICT OF INTEREST

The authors declare no conflict of interest.

## ORCID

Emily R. Potter  <https://orcid.org/0000-0001-5273-1292>

## REFERENCES

- Anderson, R.S. and Anderson, L.S. (2016) Modeling debris-covered glaciers: response to steady debris deposition. *The Cryosphere*, 100(3), 1105.
- Bonekamp, P.N.J., van Heerwaarden, C.C., Steiner, J.F. and Immerzeel, W.W. (2019) Using 3d turbulence-resolving simulations to understand the impact of surface properties on the energy balance of a debris-covered glacier. *The Cryosphere Discussions*, 1–35, 2019. <https://doi.org/10.5194/tc-2019-252> Available at: <https://www.the-cryosphere-discuss.net/tc-2019-252/>.
- Brock, B.W., Mihalcea, C., Kirkbride, M.P., Diolaiuti, G., Cutler, M. E.J. and Smiraglia, C. (2010) Meteorology and surface energy fluxes in the 2005–2007 ablation seasons at the Miage debris-covered glacier, Mont Blanc Massif, Italian Alps. *Journal of Geophysical Research: Atmospheres*, 1150(D9).
- Casey, K.A., Kääb, A. and Benn, D.I. (2011) Characterization of glacier debris cover via in situ and optical remote sensing methods: a case study in the Khumbu Himalaya, Nepal. *The Cryosphere Discussions*, 5, 499–564.
- Chen, F. and Dudhia, J. (2001) Coupling an advanced land surface–hydrology model with the Penn State–NCAR MM5 modeling system. Part I: Model implementation and sensitivity. *Monthly Weather Review*, 129(4), 569–585.
- Collier, E., Maussion, F., Nicholson, L.I., Mölg, T., Immerzeel, W. W. and Bush, A.B.G. (2015) Impact of debris cover on glacier ablation and atmosphere-glacier feedbacks in the Karakoram. *The Cryosphere*, 9(4), 1617–1632.
- Collier, E. and Immerzeel, W.W. (2015) High-resolution modeling of atmospheric dynamics in the Nepalese Himalaya. *Journal of Geophysical Research: Atmospheres*, 120(19), 9882–9896.
- Collier, E., Nicholson, L.I., Brock, B.W., Maussion, F., Essery, R. and Bush, A.B.G. (2014) Representing moisture fluxes and phase changes in glacier debris cover using a reservoir approach. *The Cryosphere*, 8(4), 1429–1444.
- Cossu, F. and Hocke, K. (2014) Influence of microphysical schemes on atmospheric water in the weather research and forecasting model. *Geoscientific Model Development*, 7(1), 147–160.
- Dee, D.P., Uppala, S.M., Simmons, A.J., Berrisford, P., Poli, P., Kobayashi, S., Andrae, U., Balmaseda, M.A., Balsamo, G., Bechtold, P., Beljaars, A. C. M., van de Berg, L., Bidlot, J., Bormann, N., Delsol, C., Dragani, R., Fuentes, M., Geer, A. J., Haimberger, L., Healy, S. B., Hersbach, H., Hólm, E. V., Isaksen, I., Kållberg, P., Köhler, M., Matricardi, M., McNally, A. P., Monge-Sanz, B. M., Morcrette, J.-J., Park, B.-K., Peubey, C., de Rosnay, P., Tavolato, C., Thépaut, J.-N. and Vitart, F. (2011) The ERA-interim reanalysis: configuration and performance of the data assimilation system. *Quarterly Journal of the Royal Meteorological Society*, 137(656), 553–597.
- Eriksson, M., Xu, J.C., Shrestha, A.B., Vaidya, R.A., Santosh, N., Sandström, K. (2009) *The Changing Himalayas: Impact of Climate Change on Water Resources and Livelihoods in the Greater Himalayas*. Kathmandu, Nepal: International Centre for Integrated Mountain Development (ICIMOD).
- Inoue, J. and Yoshida, M. (1980) Ablation and heat exchange over the Khumbu Glacier. *Journal of the Japanese Society of Snow and Ice*, 410, 26–33.
- Jarvis, A., Reuter, H.I., Nelson, A., Guevara, E., Hole-filled SRTM for the Globe Version 4. Available at: CGIAR-CSI SRTM 90m Database (<http://srtm.csi.cgiar.org>), 15, 2008.
- Kayastha, R.B., Takeuchi, Y., Nakawo, M. and Ageta, Y.. Practical prediction of ice melting beneath various thickness of debris cover on Khumbu Glacier, Nepal, using a positive degree-day factor. IAHS Publication, 7182, 2000.
- Kirkbride, M.P. (2011) *Debris-Covered Glaciers*. Dordrecht: Springer Netherlands, pp. 180–182. ISBN 978-90-481-2642-2. [https://doi.org/10.1007/978-90-481-2642-2\\_622](https://doi.org/10.1007/978-90-481-2642-2_622).
- McCarthy, M., Pritchard, H., Willis, I. and King, E. (2017) Ground-penetrating radar measurements of debris thickness on Lirung Glacier, Nepal. *Journal of Glaciology*, 630(239), 543–555.
- Nicholson, L. and Benn, D.I. (2013) Properties of natural supraglacial debris in relation to modelling sub-debris ice ablation. *Earth Surface Processes and Landforms*, 38(5), 490–501.
- Nicholson, L.I., McCarthy, M., Pritchard, H.D. and Willis, I. (2018) Supraglacial debris thickness variability: impact on ablation and relation to terrain properties. *The Cryosphere*, 12(12), 3719–3734.
- Nicholson, L. and Stiperski, I. (2020) Comparison of turbulent structures and energy fluxes over exposed and debris-covered glacier ice. *Journal of Glaciology*, 66(258), 543–555.
- Niu, G.-Y., Yang, Z.-L., Mitchell, K.E., Chen, F., Ek, M.B., Barlage, M., Kumar, A., Manning, K., Niyogi, D., Rosero, E., Tewari, M. & Xia, Y. (2011) The community Noah land surface model with multiparameterization options (Noah-MP): 1. Model description and evaluation with local-scale measurements. *Journal of Geophysical Research: Atmospheres*, 1160(D12).
- Orr, A., Listowski, C., Couttet, M., Collier, E., Immerzeel, W., Deb, P. and Bannister, D. (2017) Sensitivity of simulated summer monsoonal precipitation in Langtang Valley, Himalaya to cloud microphysics schemes in WRF. *Journal of Geophysical Research: Atmospheres*, 122, 6298–6318.
- Potter, E.R., Orr, A., Willis, I.C., Bannister, D. and Salerno, F. (2018) Dynamical drivers of the local wind regime in a Himalayan valley. *Journal of Geophysical Research: Atmospheres*, 123 (23), 13–186.
- Quincey, D., Smith, M., Rounce, D., Ross, A., King, O. and Watson, C. (2017) Evaluating morphological estimates of the aerodynamic roughness of debris covered glacier ice. *Earth Surface Processes and Landforms*, 420(15), 2541–2553.
- Reid, T.D., Carenzo, M., Pellicciotti, F. and Brock, B.W. (2012) Including debris cover effects in a distributed model of glacier ablation. *Journal of Geophysical Research: Atmospheres*, 1170(D18).
- Reznichenko, N., Davies, T., Shulmeister, J. and McSaveney, M. (2010) Effects of debris on ice-surface melting rates: an experimental study. *Journal of Glaciology*, 56(197), 384–394.
- RGI Consortium. *Randolph Glacier Inventory-A Dataset of Global Glacier Outlines: Version 5.0*. Technical report, Global Land Ice Measurements from Space, CO, 2015.



- Scherler, D., Wulf, H. and Gorelick, N. (2018) Global assessment of supraglacial debris-cover extents. *Geophysical Research Letters*, 45(21), 11–798.
- Skamarock, W.C., Klemp, J.B., Dudhia, J., Gill, D.O., Barker, D.M., Duda, M.G., Huang, X.-Y., Wang, W. and Powers, J.G. (2008) *A description of the advanced research WRF version 3. Technical report*. Boulder, CO: NCAR.
- Steiner, J.F. and Pellicciotti, F. (2016) Variability of air temperature over a debris-covered glacier in the Nepalese Himalaya. *Annals of Glaciology*, 57(71), 295–307.
- Takeuchi, Y., Kayastha, R.B. and Nakawo, M. (2000) Characteristics of ablation and heat balance in debris-free and debris-covered areas on Khumbu Glacier, Nepal Himalayas, in the pre-monsoon season. *IAHS Publication*, 264, 53–62.
- Whiteman, C.D. (2000) *Mountain Meteorology: Fundamentals and Applications*. Oxford, UK: Oxford University Press.
- Yang, W., Yao, T., Zhu, M. and Wang, Y. (2017) Comparison of the meteorology and surface energy fluxes of debris-free and

debris-covered glaciers in the southeastern Tibetan Plateau. *Journal of Glaciology*, 630(242), 1090–1104.

## SUPPORTING INFORMATION

Additional supporting information may be found online in the Supporting Information section at the end of this article.

**How to cite this article:** Potter ER, Orr A, Willis IC, Bannister D, Wagnon P. Meteorological impacts of a novel debris-covered glacier category in a regional climate model across a Himalayan catchment. *Atmos Sci Lett*. 2021;22:e1018. <https://doi.org/10.1002/asl.1018>