



Deposited via The University of Sheffield.

White Rose Research Online URL for this paper:

<https://eprints.whiterose.ac.uk/id/eprint/229809/>

Version: Published Version

---

**Article:**

Liermann, Y.N., Behning, C., Isselmann, B. et al. (2025) Ellipsoid zone reflectivity as a functional imaging biomarker for age-related macular degeneration: a MACUSTAR study report. *Scientific Reports*, 15. 20093. ISSN: 2045-2322

<https://doi.org/10.1038/s41598-025-00735-7>

---

**Reuse**

This article is distributed under the terms of the Creative Commons Attribution (CC BY) licence. This licence allows you to distribute, remix, tweak, and build upon the work, even commercially, as long as you credit the authors for the original work. More information and the full terms of the licence here:

<https://creativecommons.org/licenses/>

**Takedown**

If you consider content in White Rose Research Online to be in breach of UK law, please notify us by emailing [eprints@whiterose.ac.uk](mailto:eprints@whiterose.ac.uk) including the URL of the record and the reason for the withdrawal request.



## OPEN Ellipsoid zone reflectivity as a functional imaging biomarker for age-related macular degeneration: a MACUSTAR study report

Yannick N. Liermann<sup>1</sup>, Charlotte Behning<sup>2</sup>, Ben Isselmann<sup>1</sup>, Matthias Schmid<sup>2</sup>, Hannah M. P. Dunbar<sup>3,4</sup>, Ulrich F. O. Luhmann<sup>5</sup>, Robert P. Finger<sup>6</sup>, Steffen Schmitz-Valckenberg<sup>1,7</sup>, Frank G. Holz<sup>1</sup>, Maximilian Pfau<sup>1,8</sup>, Chi D. Luu<sup>9,10</sup>, Marlene Saßmannshausen<sup>1</sup>, Sarah Thiele<sup>1,11</sup>✉ on behalf of the MACUSTAR consortium\*

This study evaluated the functional relevance of relative ellipsoid zone reflectivity (rEZR) on spectral-domain optical coherence tomography as a structural biomarker for retinal integrity, focusing on its association with retinal function. Participants with age-related macular degeneration (AMD) and controls from the MACUSTAR study underwent functional testing, including mesopic fundus-controlled perimetry, best-corrected visual acuity, low-luminance visual acuity, low-luminance deficit, Moorfields Acuity Test, and Pelli-Robson contrast sensitivity, along with spectral-domain optical coherence tomography imaging. Structural and functional data were analyzed globally and spatially aligned for topographic analysis. Linear-mixed effects models, adjusted for age, sex, and eccentricity of the rEZR, assessed associations between rEZR and functional metrics. A total of 275 eyes (early AMD,  $n = 34$ ; intermediate AMD,  $n = 152$ ; late AMD,  $n = 36$ ; controls,  $n = 53$ ) from 275 participants (mean  $\pm$  standard deviation age:  $71.1 \pm 7.2$  years; 63.3% female) were included. In global analyses, rEZR was associated with the mean average threshold in mesopic fundus-controlled perimetry (coefficient estimate 0.0492, 95% confidence interval 0.0190–0.0794,  $p = 0.0015$ ), low-luminance visual acuity (coefficient estimate  $-0.0015$ , 95% confidence interval  $-0.0026$  to  $-0.0004$ ,  $p = 0.0092$ ), Moorfields Acuity Test (coefficient estimate 0.0092, 95% confidence interval  $-0.0022$  to  $-0.0001$ ,  $p = 0.0285$ ), and Pelli-Robson contrast sensitivity (coefficient estimate 0.0030, 95% confidence interval 0.0015–0.0045,  $p = 0.0001$ ). Topographic analysis further revealed an association of rEZR with mesopic retinal sensitivity (coefficient estimate 0.0065, 95% confidence interval 0.0026–0.0104,  $p < 0.0001$ ). Higher outer retinal reflectivity is linked to better retinal function in AMD and controls, supporting its potential as a biomarker for retinal integrity and function.

Age-related macular degeneration (AMD) is a common cause of central visual impairment in the aging population worldwide, significantly affecting quality of life<sup>1,2</sup>. It manifests as a chronic-progressive disease, in which drusen and pigmentary abnormalities characterize the intermediate and geographic atrophy (GA) and/or macular neovascularization (MNV) advanced stage<sup>3,4</sup>. Since visual loss predominantly occurs in advanced AMD, therapeutic interventions targeting the intermediate stage (iAMD) are of considerable interest<sup>5</sup>. Yet, the challenge of identifying sensitive and reliable biomarkers for iAMD that could serve as valid outcome measures in the context of upcoming interventional clinical trials remains.

<sup>1</sup>Department of Ophthalmology, University of Bonn, Bonn, Germany. <sup>2</sup>Institute of Medical Biometry, Informatics and Epidemiology, University Hospital Bonn, Bonn, Germany. <sup>3</sup>Institute of Ophthalmology, University College London, London, UK. <sup>4</sup>Department of Optometry, Moorfields Eye Hospital Foundation Trust, London, UK. <sup>5</sup>Roche Pharmaceutical Research and Early Development, Translational Medicine Ophthalmology, Roche Innovation Center Basel, Basel, Schweiz. <sup>6</sup>Department of Ophthalmology, Medical Faculty Mannheim, University of Heidelberg, Mannheim, Germany. <sup>7</sup>John A. Moran Eye Center, University of Utah, Salt Lake City, USA. <sup>8</sup>Institute of Molecular and Clinical Ophthalmology Basel, Basel, Switzerland. <sup>9</sup>Center for Eye Research Australia, Royal Victorian Eye and Ear Hospital, Melbourne, Australia. <sup>10</sup>Ophthalmology, Department of Surgery, The University of Melbourne, Melbourne, Australia. <sup>11</sup>Department of Ophthalmology, University Medical Center Hamburg-Eppendorf, Hamburg, Germany. \*A list of authors and their affiliations appears at the end of the paper. ✉email: sarah.thiele@ukbonn.de

On spectral-domain optical coherence tomography (SD-OCT) the relative ellipsoid zone reflectivity (rEZR), comprising the reflectivity signal of both the ellipsoid zone (EZ) and the external limiting membrane (ELM), has emerged as a promising quantitative measure for assessing outer retinal integrity<sup>6–10</sup>. The FDA has recently approved the assessment of the EZ integrity as a structural endpoint in GA trials, acknowledging its importance for photoreceptor degeneration in AMD<sup>11</sup>. However, in earlier stages of AMD, complete EZ loss is uncommon, making reflectivity a more sensitive measure than integrity alone. Previous studies employing an automated approach for rEZR determination have demonstrated a longitudinal rEZR decline in AMD patients as well as its association with AMD staging and the presence of high-risk features in iAMD<sup>6,12–15</sup>. Given the presumed origin of the EZ signal—i.e., mitochondria within photoreceptor inner segments—and the ELM as a linear confluence of junctional complexes supporting the photoreceptors, it can be hypothesized that structurally assessed rEZR might also reflect outer retinal function<sup>16–22</sup>. However, the functional relevance of rEZR is yet unclear. Its validation against established measures of retinal function is required to better understand its clinical relevance.

This study, conducted as part of the MACUSTAR study cross-sectional baseline cohort, assesses the association between rEZR and multiple measures of retinal function across various stages of AMD, both globally and topographically. By analyzing the rEZR's potential as a structural surrogate for retinal function (“functional retinal imaging”), this research addresses the critical need for innovative biomarker identification that could be accepted by regulatory agencies as a novel clinical endpoint for future iAMD trials.

## Results

### Group characteristics

A total of 275 eyes from 275 study participants (female:  $n = 174$ ; 63.3%) with a mean age of  $71.1 \pm 7.2$  years were included in the analysis. According to the AMD disease staging 34 (12.4%) participants were categorized as early AMD, 152 (55.3%) as iAMD and 36 (13.1%) as late-stage AMD (26 with GA, 10 with MNV). Additionally, 53 (19.3%) individuals of the control subgroup were included.

The mean global rEZR for the overall study population was  $36.9 \pm 18.9$  AU. Specifically, the early AMD group exhibited a rEZR of  $41.2 \pm 17.3$  AU, the intermediate AMD group  $36.9 \pm 16.7$  AU, and the late AMD group  $16.3 \pm 10.9$  AU. In contrast, healthy controls demonstrated a higher rEZR of  $47.8 \pm 19.2$  AU.

Assessment of retinal function using fundus-controlled perimetry (FCP) revealed a mean mesopic average threshold of  $21.8 \pm 6.8$  dB across the entire study population, with subgroup means of  $23.9 \pm 2.6$  dB in early AMD,  $23.3 \pm 4.0$  dB in intermediate AMD,  $8.0 \pm 6.9$  dB in late-stage AMD, and  $25.4 \pm 2.0$  dB in the control group. Chart-based visual function testing showed a mean best-corrected visual acuity (BCVA) of  $0.10 \pm 0.29$  logMAR [80.0  $\pm$  14.5 ETDRS letters], mean low-luminance visual acuity of  $0.302 \pm 0.291$  logMAR [69.9  $\pm$  14.5 ETDRS letters], mean low-luminance deficit of  $-0.196 \pm 0.127$  logMAR [94.8  $\pm$  6.3 ETDRS letters], mean Moorfields Acuity Test of  $0.498 \pm 0.252$  logMAR [60.1  $\pm$  12.6 ETDRS letters], and mean Pelli-Robson contrast sensitivity of  $1.53 \pm 0.272$  logCS [33.6  $\pm$  5.4 ETDRS letters] for the entire study population. For further subgroup results and baseline characteristics, please see Table 1.

### Association between rEZR and FCP-derived retinal sensitivity

We found a significant univariate association between rEZR and FCP-derived retinal sensitivity in global (coefficient estimate (CE) 0.1787 [95%-CI 0.1416–0.2159,  $p < 0.0001$ ]), locally averaged (CE 0.1164 [95%-CI 0.0922–0.1406,  $p < 0.0001$ ]), and spatially resolved (CE 0.0076 [95%-CI 0.0031–0.0122,  $p < 0.0001$ ]) analyses, with higher rEZR values corresponding to better retinal function. This association remained significant after adjustment for age, sex and AMD staging, given a CE of 0.0492 (95%-CI 0.0190–0.0794,  $p = 0.0015$ ) AU in global analysis, 0.0247 (95%-CI 0.0039–0.0455,  $p = 0.0200$ ) AU in locally averaged analysis and 0.0065 (95%-CI 0.0026–0.0104,  $p = 0.0010$ ) AU in the spatially resolved analysis, respectively. For graphical representation of the results in representative cases from the iAMD and control subgroups, please refer to Fig. 1. For detailed results of the adjusted and univariate models, see Table 2 and Supplementary Table 1, respectively.

### Association between rEZR and other chart-based visual function tests

In multivariable analyses, rEZR was associated with low-luminance visual acuity, Moorfields Acuity Test, and Pelli-Robson contrast sensitivity in the global analysis, with coefficient estimates of  $-0.0015$  (95%-CI  $-0.0026$  to  $-0.0004$ ,  $p = 0.0092$ ),  $-0.0011$  (95%-CI  $-0.0022$  to  $-0.0001$ ,  $p = 0.0285$ ), and  $0.0030$  (95%-CI  $0.0015$ – $0.0045$ ,  $p = 0.0001$ ), respectively. No association ( $p = 0.2572$ ) was found between rEZR and BCVA (CE  $-0.0006$ ; 95%-CI  $-0.0015$  to  $0.0004$ ). Similarly, no association was observed between rEZR and low-luminance deficit in the global analysis (CE 0.0010; 95%-CI  $-0.0000$  to  $0.0019$ ,  $p = 0.0521$ ).

In the central subfield analysis (ETDRS grid, central 1 mm diameter), the rEZR was significantly associated with low-luminance visual acuity and Pelli-Robson contrast sensitivity given CEs of  $-0.0013$  (95%-CI  $-0.0025$  to  $0.001$ ;  $p = 0.0306$ ) and  $0.0019$  (95%-CI  $0.004$  to  $0.0035$ ;  $p = 0.0128$ ). Additionally, rEZR showed a significant association with low-luminance deficit in the central subfield (CE: 0.0011; 95%-CI  $0.0001$ – $0.0021$ ,  $p = 0.0343$ ). Neither BCVA (CE:  $-0.0002$ ; 95%-CI  $-0.0012$  to  $0.0008$ ;  $p = 0.6541$ ) nor Moorfields Acuity Test (CE:  $-0.0007$ ; 95%-CI  $-0.0017$ – $0.0004$ ;  $p = 0.2031$ ) showed association with the mean rEZR of the central ETDRS subfield.

For detailed model results of global and spatially resolved analysis of the association between rEZR and chart-based visual function, please see Table 3. For the corresponding univariate models, refer to Supplementary Table 2.

## Discussion

In this study we found significant associations between the rEZR and a comprehensive battery of functional outcomes demonstrating the functional relevance of the rEZR. Thus, the rEZR shows not only potential as a

Variable	No AMD (n = 53)	Early AMD (n = 34)	iAMD (n = 152)	Late AMD (n = 36)	Overall (n = 275)
Age (years)					
Mean (SD)	68.1 (6.40)	71.7 (6.38)	71.2 (7.61)	74.6 (5.69)	71.1 (7.23)
Median (min., max.)	68.0 [55.0, 80.0]	72.0 [57.0, 82.0]	72.0 [55.0, 88.0]	74.0 [64.0, 84.0]	72.0 [55.0, 88.0]
Sex (male)					
n (%)	22 (41.5%)	7 (20.6%)	54 (35.5%)	18 (50.0%)	101 (36.7%)
Central subfield rEZR (AU)					
Mean (SD)	50.3 (21.2)	36.6 (15.2)	25.6 (13.9)	5.24 (7.92)	29.9 (20.0)
Median (min., max.)	54.3 [9.73, 101]	38.0 [6.78, 75.0]	23.5 [1.44, 70.0]	3.23 [1.03, 43.7]	26.9 [1.03, 101]
Global rEZR (AU)					
Mean (SD)	47.8 (19.2)	41.2 (17.3)	36.9 (16.7)	16.3 (10.9)	36.9 (18.9)
Median [min., max.]	41.3 [11.6, 101]	35.7 [16.3, 96.8]	34.4 [2.28, 84.7]	12.0 [4.52, 50.5]	34.3 [2.28, 101]
Mesopic sensitivity (dB)					
Mean (SD)	25.4 (2.05)	23.9 (2.61)	23.3 (4.02)	8.03 (6.91)	21.8 (6.77)
Median [min., max.]	25.7 [19.4, 29.2]	24.6 [17.1, 27.6]	24.2 [0.500, 28.8]	7.50 [0, 21.1]	24.2 [0, 29.2]
BCVA (logMAR)					
Mean (SD)	- 0.0404 (0.0838)	0.0106 (0.0834)	0.0238 (0.105)	0.763 (0.250)	0.107 (0.286)
Median [min., max.]	- 0.0600 [- 0.240, 0.140]	0.0200 [- 0.180, 0.200]	0.0200 [- 0.240, 0.280]	0.840 [0.200, 1.10]	0.0200 [- 0.240, 1.10]
LLVA (logMAR)					
Mean (SD)	0.137 (0.0903)	0.188(0.142)	0.237(0.151)	0.929 (0.236)	0.302(0.291)
Median [min., max.]	0.120[- 0.0200, 0.380]	0.170 [- 0.0400, 0.500]	0.220 [- 0.140, 0.680]	0.940 [0.520, 1.52]	0.200 [- 0.140, 1.52]
MAT (logMAR)					
Mean (SD)	0.353 (0.103)	0.418 (0.118)	0.441 (0.143)	1.03 (0.197)	0.498 (0.252)
Median [min., max.]	0.340 [0.160, 0.620]	0.410 [0.200, 0.720]	0.420 [0.100, 0.900]	1.00 [0.660, 1.46]	0.420 [0.100, 1.46]
PR (logCS)					
Mean (SD)	1.71 (0.165)	1.63 (0.156)	1.56 (0.177)	1.09 (0.346)	1.53 (0.272)
Median [min., max.]	1.75 [1.05, 1.95]	1.65 [1.25, 1.90]	1.55 [1.05, 1.95]	1.20 [0.200, 1.55]	1.60 [0.200, 1.95]
LLD (logMAR)					
Mean (SD)	- 0.177 (0.0660)	- 0.178 (0.104)	- 0.213 (0.103)	- 0.166 (0.249)	- 0.196 (0.127)
Median [min., max.]	- 0.180 [- 0.320, - 0.0200]	- 0.170 [- 0.420, 0.0200]	- 0.200 [- 0.640, - 0.0200]	- 0.110 [- 0.820, 0.400]	- 0.180 [- 0.820, 0.400]

**Table 1.** Baseline characteristics of the study group. *AMD* Age-related macular degeneration, *iAMD* Intermediate age-related macular degeneration, *rEZR* Relative ellipsoid zone reflectivity, *AU* Arbitrary units, *FCP* Fundus-controlled perimetry, *dB* Decibels, *BCVA* Best-corrected visual acuity, *logMAR* Logarithm of the minimum angle of resolution, *LLVA* Low-luminance visual acuity, *LLD* Low-luminance deficit, *MAT* Moorfields Acuity Test, *PR* Pelli-Robson contrast sensitivity, *logCS* Logarithm of contrast sensitivity.

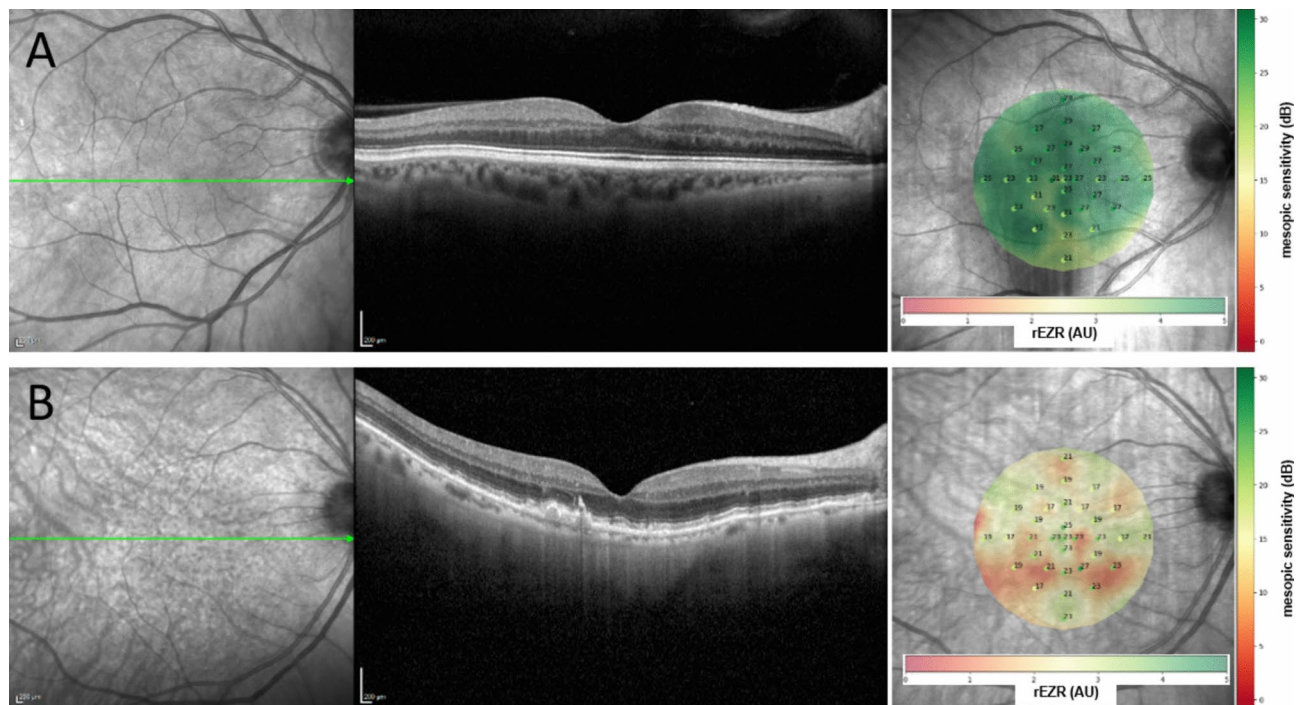
novel quantitative measure for outer retinal integrity, but also as a structural indicator for retinal function in AMD (“functional imaging”).

The EZ signal in SD-OCT imaging is assumed to originate from mitochondria within photoreceptors, which are essential for metabolism and health, and exhibit light-scattering properties due to their optical reflectivity<sup>18,24,25</sup>. This reflectivity, impacted by photoreceptor function and integrity, indicates that changes in the EZ signal can reflect compromised photoreceptor function<sup>9</sup>. Additionally, the ELM represents the junctional complex between photoreceptors and Müller glial cells, crucial for outer retinal health<sup>26</sup>. Therefore, based on these relationships, analyzing rEZR as a potential surrogate for retinal function is biologically plausible.

While patients with advanced AMD stages experience significant reduction in high-contrast, high-luminance BCVA, patients with earlier stages, specifically iAMD patients, suffer from functional impairment beyond BCVA assessment, presenting with prolonged dark adaptation, reduced contrast sensitivity, localized deficits of FCP-derived retinal sensitivity and difficulties with vision under dim light conditions<sup>27–29</sup>.

Our results demonstrated significant associations between rEZR and these specific functional tests, highlighting the utility of rEZR as a potential biomarker for iAMD. The strong association between rEZR and low-luminance visual acuity, Pelli-Robson contrast sensitivity, and FCP underscores the relevance of the rEZR in reflecting the retinal changes that affect critical visual functions in AMD. With regard to mesopic FCP-testing, higher outer retinal reflectivity (indicated by higher rEZR values) showed significant association ( $p = 0.0015$ ) with better retinal function given a CE of 0.0492 (95%-CI 0.0190–0.0794) AU in the global analysis. This applied also for rEZR’s association with low-luminance visual acuity and Pelli-Robson contrast sensitivity. In contrast, no association of rEZR was found for BCVA in the global model (CE of - 0.0006 [95%-CI - 0.0015 to 0.0004];  $p = 0.2572$ ), nor in the central subfield model (CE of - 0.0002 [95%-CI - 0.0012 to 0.0008];  $p = 0.6541$ ). This might indicate that rEZR reflects functional changes in AMD beyond BCVA assessment alone<sup>39</sup>.

Beyond rEZR, several OCT-derived metrics related to the EZ have been previously studied as biomarkers of photoreceptor integrity and function. EZ integrity, typically assessed based on its continuity or disruption, has



**Fig. 1.** Exemplary cases of an healthy individual (**A**) and a participant with intermediate age-related macular degeneration (**B**) with (from left to right) confocal near-infrared en-face imaging, the horizontal OCT line through the fovea and a heat-map representation of the spatial association of the relative ellipsoid zone reflectivity (rEZR) and retinal sensitivity as tested by mesopic fundus-controlled perimetry (FCP). In the heat-map representation, the rEZR (AU) is represented in the background with lower and higher values ranging from red to green, while point-wise retinal sensitivity is demonstrated by superimposed specific values (dB) and also color-coded stimulus points, again with lower values in red and higher values in green. Note the association of lower rEZR values (more red-colored areas) with worse retinal function, as well as higher rEZR values (more green-colored areas) with better retinal function.

been correlated with visual acuity and retinal sensitivity in AMD as well as in other retinal diseases, including Best vitelliform macular dystrophy, macular telangiectasia, and retinal vein occlusions<sup>20</sup>. In AMD, greater EZ disruption has been associated with worsening visual function, with higher EZ integrity—including less EZ attenuation, greater EZ-RPE thickness, and higher EZ intensity—correlating with better visual acuity. Additionally, baseline EZ integrity metrics were predictive of future visual acuity loss, further supporting their prognostic value in disease progression<sup>30</sup>. Furthermore, variations in outer retinal substructure thickness, including the photoreceptor inner and outer segments, have been correlated with visual acuity in dry AMD, reinforcing the relevance of these parameters in assessing disease severity<sup>31</sup>. Recently, Birner et al. demonstrated a significant association between ellipsoid zone thickness and loss, as quantified by deep learning algorithms, and retinal sensitivity assessed by microperimetry in geographic atrophy, further emphasizing the functional relevance of EZ-related OCT metrics<sup>32</sup>. While these established EZ metrics provide valuable structural information, they primarily reflect later stages of photoreceptor damage. In contrast, the rEZR offers a quantitative assessment of EZ reflectivity that may detect subtle functional impairments before visible morphological changes occur. Its normalization has been proposed to improve reproducibility across imaging conditions. The strong associations observed between rEZR and functional measures in this study suggest that the rEZR may complement existing EZ biomarkers.

Another important finding of this study is the significant association of rEZR not only on an eye-level (global analysis), but also on a more granular, i.e. spatially resolved level. Particularly in the context of the presented FCP analysis, where both rEZR and retinal function were determined and evaluated in a spatially resolved manner, our results underscore the rEZR's potential to reflect localized functional deficits. Specifically, we found CEs of 0.0246 (95%-CI 0.0039–0.0455) AU in the locally averaged analysis ( $p=0.02$ ) and 0.0065 (95%-CI 0.0026–0.0104) AU in the spatially resolved analysis ( $p=0.001$ ). These results support the rEZR's potential as an innovative outcome measure in future iAMD trials, as its ability to identify retinal areas with functional deficits could have significant implications for targeted therapeutic interventions.

While the relationship between the rEZR and AMD stage, as well as various structural high-risk features associated with iAMD, has been previously investigated, this study is, to the best of our knowledge, the first to assess the spatially resolved functional relevance of quantitative EZ reflectivity changes in AMD<sup>12</sup>. Previously, Wu et al. demonstrated an association between relative EZ intensity—formerly referred to as the inner segment band—and retinal function, assessed by multifocal electroretinography, in patients with AMD exhibiting large drusen<sup>33</sup>. However, unlike our study, the EZ intensity measurements were performed manually on a single OCT

	Predictors	mesAT [dB]		
		Coefficient estimate	95%-Confidence interval	p-value
Global	(Intercept)	29.5041	23.8335 to 35.1747	<0.0001
	Mean rEZR [AU]	0.0492	0.0190 to 0.0794	0.0015
	AMD stage [early]	-0.9677	-2.7009 to 0.7655	0.2726
	AMD stage [intermediate]	-1.3611	-2.6373 to -0.0849	0.0367
	AMD stage [late]	-15.2023	-17.0957 to -13.3088	<0.0001
	Age [years]	-0.0906	-0.1627 to -0.0184	0.0141
	Sex [male]	-0.6307	-1.6161 to 0.3547	0.2087
Locally averaged	(Intercept)	31.3301	25.8129 to 36.8473	<0.0001
	Mean rEZR [AU]	0.0247	0.0039 to 0.0455	0.0200
	AMD stage [early]	-0.9375	-2.6906 to 0.8156	0.2933
	AMD stage [intermediate]	-1.2205	-2.5633 to 0.1223	0.0747
	AMD stage [late]	-15.2388	-17.2655 to -13.2121	<0.0001
	Age [years]	-0.1066	-0.1780 to -0.0352	0.0036
	Sex [male]	-0.6807	-1.6763 to 0.3149	0.1794
Spatially resolved	(Intercept)	34.7798	29.9200 to 39.6397	<0.0001
	Mean rEZR [AU]	0.0053	0.0008 to 0.0098	0.0213
	AMD stage [early]	-1.115	-2.8956 to 0.6727	0.2221
	AMD stage [intermediate]	-1.5605	-2.8571 to -0.2640	0.0183
	AMD stage [late]	-16.2982	-18.1017 to -14.4947	<0.0001
	Age [years]	-0.1303	-0.2000 to -0.0607	0.0002
	Sex [male]	-0.7716	-1.7889 to 0.2457	0.1371

**Table 2.** Association of the relative Ellipsoid Zone Reflectivity (rEZR) and the mesopic average threshold (mesAT [dB]) as assessed in fundus-controlled perimetry (FCP) in global, locally averaged and spatially resolved analysis. Multivariable models were fitted with FCP as outcome variable. Independent variables included mean rEZR (in AU), AMD stage as a categorical variable with no AMD group as a reference category, age in years and sex with female sex as reference.

line scan, and the spatial resolution of multifocal electroretinography testing was limited. Several other studies have demonstrated the functional relevance of EZ metrics, supporting our findings, although most did not employ spatially resolved analysis<sup>30,34–41</sup>. Yordi et al. demonstrated that longitudinal changes in EZ integrity were significantly associated with visual acuity outcomes in neovascular AMD, particularly emphasizing the role of subretinal hyperreflective material and EZ integrity in predicting visual outcomes<sup>30</sup>. Similarly, Wu et al. concluded in 2014 that the integrity of the ISe band might serve as a surrogate marker of retinal function based on its prognostic value for predicting microperimetric retinal sensitivity<sup>39</sup>. Assessing dark adaptation in AMD subjects, Láins et al. also highlighted the relevance of the EZ, albeit only having determined its integrity qualitatively, with impaired retinal function given delayed rod-intercept times (RIT) in the presence of EZ disruption<sup>42</sup>.

Several limitations need to be considered in this study. First, as a cross-sectional study analysis, it does not allow for the assessment of rEZR's prognostic value for future functional impairment and vision loss. Additionally, while this is the first analysis of rEZR and its functional relevance in AMD, it includes the entire MACUSTAR cohort of the cross-sectional study part at baseline, encompassing subjects with different AMD stages and healthy controls. While this enhances the generalizability of our results, a more refined analysis focusing on AMD subgroups as well as longitudinal analyses, are warranted as both functional and phenotypic variations exist particularly with regard to iAMD. Although this study did not directly compare rEZR with traditional AMD biomarkers such as drusen area or retinal layer thickness, prior research has demonstrated its complementary role<sup>12</sup>. Notably, visual function may be impaired even in areas without structural changes, as shown in previous studies, suggesting that the rEZR captures functional deficits beyond traditional biomarkers<sup>43</sup>. Although calculating the rEZR as a ratio reduces variability from scan intensity and optical media opacities, subtle effects from differences in illumination, focal lens or vitreous opacities remain possible.

A major strength of this study is the prospectively and highly standardized acquired retinal imaging and functional data from a multicenter trial and the use of innovative data processing approaches. Specifically, the application of the deep learning-based algorithm “SuperRetina” enabled precise alignment of structural and functional study data, ensuring reliable interpretation of the spatially resolved analyses<sup>32</sup>.

In conclusion, this study demonstrates the functional relevance of outer retinal reflectivity changes, specifically the rEZR, in individuals with AMD and healthy subjects. It highlights the value of the rEZR as an easily acquired and objectively determined biomarker for assessing outer retinal and functional impairment. Further analyses are needed to better understand the clinical implications of the rEZR, particularly its prognostic relevance for progression and visual impairment in patients with iAMD. This will be helpful for patient selection and efficacy assessments in future interventional clinical iAMD trials.

	Predictors	BCVA [logMAR]			LLVA [logMAR]			MAT [logMAR]			PR [logCS]			LLD [logMAR]		
		Coefficient estimate	95%-Confidence interval	p-value	Coefficient estimate	95%-Confidence interval	p-value	Coefficient estimate	95%-Confidence interval	p-value	Coefficient estimate	95%-Confidence interval	p-value	Coefficient estimate	95%-Confidence interval	p-value
Global	(Intercept)	-0.2756	-0.4556 to -0.0957	0.0028	-0.1465	-0.3589 to 0.0658	0.1755	0.0202	-0.1722 to 0.2125	0.8367	1.7991	1.5188 to 2.0794	<0.0001	-0.1291	-0.3101 to 0.0519	0.1613
	Mean rEZR [AU]	-0.0006	-0.0015 to 0.0004	0.2572	-0.0015	-0.0026 to -0.0004	0.0092	-0.0011	-0.0022 to -0.0001	0.0285	0.0030	0.0015 to 0.0045	0.0001	0.0010	-0.000 to 0.0019	0.0521
	AMD stage [early]	0.0293	-0.0257 to 0.0843	0.2954	0.0212	-0.0437 to 0.0861	0.5213	0.0301	-0.0287 to 0.0889	0.3136	-0.0438	-0.1294 to 0.0419	0.3155	0.0081	-0.0472 to 0.0634	0.7730
	AMD stage [intermediate]	0.0448	0.0043 to 0.0853	0.0304	0.0669	0.0191 to 0.1147	0.0063	0.0557	0.0124 to 0.0990	0.0119	-0.1071	-0.1702 - -0.0441	0.0009	-0.0221	-0.0628 to 0.0186	0.2866
	AMD stage [late]	0.7612	0.7011 to 0.8213	<0.0001	0.7102	0.6393 to 0.7811	<0.0001	0.6022	0.5380 to 0.6665	<0.001	-0.5043	-0.5979 - -0.4107	<0.0001	0.0510	-0.0094 to 0.1114	0.0979
	Age [years]	0.0040	0.0017 to 0.0062	0.0008	0.0053	0.0026 to 0.0080	0.0002	0.0059	0.0034 to 0.0083	<0.0001	-0.0035	-0.0071 to 0.0000	0.0530	-0.0013	-0.0036 to 0.0010	0.2664
	Sex [male]	-0.173	-0.0485 to 0.0140	0.2777	-0.0046	-0.0415 to 0.0323	0.8072	-0.0282	-0.0616 to 0.0053	0.0983	0.0127	-0.0360 to 0.0614	0.6087	-0.0127	-0.0442 to 0.0188	0.4274
Spatially resolved	(Intercept)	-0.3141	-0.4775 to -0.1506	0.0002	-0.1883	-0.3825 to 0.0060	0.0575	-0.0514	-0.2271 to 0.1243	0.5650	2.0098	1.7578 to 2.2617	<0.0001	-0.1258	-0.2899 to 0.0383	0.1324
	Mean rEZR [AU]	-0.0002	-0.0012 to 0.0008	0.6541	-0.0013	-0.0025 to 0.001	0.0306	-0.0007	-0.0017 to 0.0004	0.2031	0.0019	0.004 to 0.0035	0.0128	0.0011	0.0001 to 0.0021	0.0343
	AMD stage [early]	0.0271	-0.0279 to 0.0822	0.3330	0.0107	-0.0547 to 0.0762	0.7468	0.0255	-0.0336 to 0.0847	0.3961	-0.0300	-0.1148 to 0.0549	0.4873	0.0164	-0.0389 to 0.0716	0.5600
	AMD stage [intermediate]	0.0406	-0.0049 to 0.0861	0.0801	0.0430	-0.011 to 0.0971	0.1184	0.0459	-0.0030 to 0.0947	0.0657	-0.0825	-0.1526 to -0.0124	0.0213	-0.0024	-0.0481 to 0.0432	0.9169
	AMD stage [late]	0.7352	0.6636 to 0.8068	<0.0001	0.7013	0.6162 to 0.7864	<0.0001	0.5851	0.5082 to 0.6621	<0.0001	-0.4793	-0.5896 to -0.3689	<0.0001	0.0339	-0.0380 to 0.1058	0.3538
	Age [years]	0.0043	0.0022 to 0.0065	0.0001	0.0058	0.0032 to 0.0083	<0.0001	0.0066	0.0043 to 0.0089	<0.0001	-0.0059	-0.0092 to -0.0026	0.0005	-0.0015	-0.0036 to 0.1058	0.3538
	Sex [male]	-0.0237	-0.0553 to 0.0079	0.1413	-0.0078	-0.0454 to 0.0298	0.6831	-0.0281	-0.0621 to 0.0059	0.1044	0.0050	-0.0437 to 0.0538	0.8387	-0.0159	-0.0476 to 0.0158	0.3251

**Table 3.** Association of relative ellipsoid zone reflectivity (rEZR) with functional tests, including best-corrected visual acuity (BCVA), low-luminance visual acuity (LLVA), Moorfields Acuity Test (MAT), Pelli-Robson contrast sensitivity (PR), and low-luminance deficit (LLD), in global and central-subfield analyses. Multivariable models were fitted with functional tests as the outcome variable. Independent variables included mean rEZR (arbitrary units, AU), AMD stage as a categorical variable with the no AMD group as the reference category, age in years, and sex with female sex as the reference category.

## Methods

### MACUSTAR study participants

The MACUSTAR study (ClinicalTrials.gov Identifier: NCT03349801), a prospective multicenter, low-intervention natural history study, aims to identify novel biomarkers for iAMD<sup>44</sup>. The study's design and participant selection criteria have been outlined in prior publications<sup>44–46</sup>. Enrolment occurred from March 2018 to February 2020, selecting one eye per participant for the study, prioritizing the eye with better visual acuity when both eyes met the inclusion criteria. In accordance with the Declaration of Helsinki, ethical guidelines were strictly followed, with informed written consent obtained from all participants. The study includes four groups: early AMD, iAMD, late-stage AMD, and a control group<sup>3</sup>. Consistent with the classification system proposed by Ferris et al., iAMD was defined by the presence of large sub-RPE drusen ( $> 125 \mu\text{m}$ ) and/or any AMD-related pigmentary abnormalities in both eyes<sup>5</sup>. If the fellow eye had an extrafoveal GA lesion, it was required to be no larger than  $1.25 \text{ mm}^2$ . Early AMD was characterized by medium-sized drusen ( $63\text{--}125 \mu\text{m}$ ), while late-stage AMD included MNV and/or central GA cases. All image grading and classification of study eyes were performed centrally at the GRADE Reading Center Bonn by trained and independent graders, following the MACUSTAR standardized grading protocol<sup>44</sup>.

In total 301 participants were recruited and included in the cross-sectional part of the MACUSTAR study (early AMD  $n = 34$ , iAMD  $n = 168$ , late AMD  $n = 43$ , controls  $n = 56$ ). Out of those, 26 participants were not assessed in this study due to incomplete functional data (no AMD  $n = 2$ , iAMD  $n = 8$ , late AMD  $n = 6$ ) or missing determination of the rEZR at positions of the MAIA stimulus grid (no AMD  $n = 1$ , iAMD  $n = 8$ , late AMD  $n = 1$ ). Reasons for missing microperimetry assessments were mostly procedural errors, e.g. incorrect grid use or incomplete upload of data.

### Imaging protocol

Participants underwent multimodal retinal imaging following standardized operating procedures conducted by certified study site personnel. Prior to imaging, pupil dilation was achieved using tropicamide 0.5% and phenylephrine 2.5% eye drops. Retinal imaging included combined confocal scanning laser ophthalmoscopy for near-infrared reflectance imaging [Automated Real-Time mode (ART)  $\geq 30$  single frames] and SD-OCT [ $30^\circ \times 25^\circ$ , enhanced-depth-imaging, high-speed mode, 241 B-scans, distance  $30 \mu\text{m}$ , ART mode = 9] which was acquired using the Spectralis HRA + OCT device (Heidelberg Engineering, Heidelberg, Germany).

### Determination of the relative EZ reflectivity

The rEZR was calculated as the ratio of the peak reflectivity of the EZ to the peak reflectivity of the ELM, using raw OCT images to ensure precise analysis of native, untransformed reflectivity signals (dynamic range: 0 to 1 [arbitrary units, AU]). This ratio minimizes the impact of acquisition-related variability or noise, including potential differences in illumination or scan intensity, as such effects are expected to influence both layers similarly, effectively canceling out when expressed as a ratio<sup>12,47</sup>. The ELM was selected as the reference layer due to its well-documented stability across a wide range of retinal eccentricities, including the fovea, as reported in previous studies<sup>6,48</sup>. Furthermore, as a non-neural structure, the ELM is less susceptible to reflectivity changes associated with aging or early retinal degeneration, making it a reliable benchmark for rEZR determination.

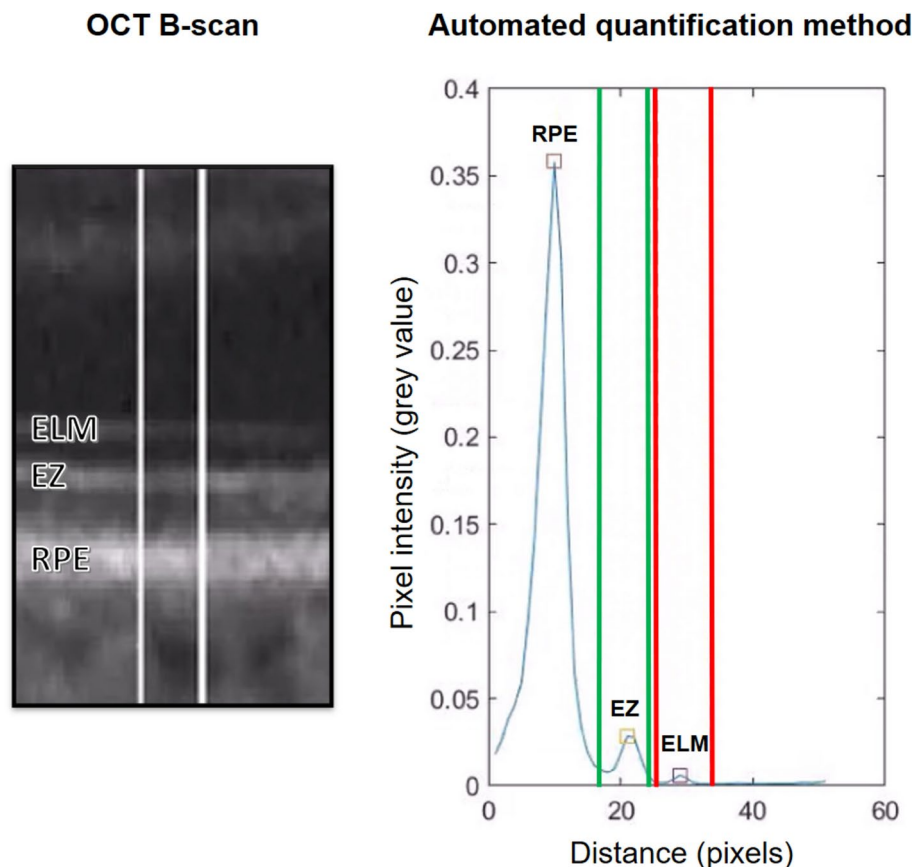
An automated algorithm (Python Software Foundation, Python Language Reference, version 3.9. Available at [<http://www.python.org>]; annotated code available at: <https://github.com/bisselma/reEZIquantification>) was employed to calculate the rEZR, as previously validated and described in detail<sup>15,47,49,50</sup>. Briefly, segmentation coordinates, obtained via a deep learning-based approach, were superimposed on the raw, non-logarithmic OCT images and used to straighten each B-scan along the RPE<sup>51</sup>. This alignment ensured accurate rEZR calculation, even in eyes with pronounced posterior pole curvature. Regions of interest were defined at adjoining nine-pixel intervals along the x-axis of each B-scan. Within these regions of interest, reflectivity profiles were generated and the EZ and ELM peak reflectivities were automatically identified. Predefined subregions, based on the 95% prediction interval of reflectivity profiles, were used to reliably detect the EZ and ELM peaks (Fig. 2)<sup>47</sup>. This process facilitated both global and spatially resolved rEZR calculations across each B-scan ( $n = 241$ ) of the SD-OCT raster scan.

To reduce interference from structural changes, retinal areas affected by sub-RPE drusen were automatically excluded from further analysis. These regions were identified as areas where the separation between the RPE and Bruch's membrane exceeded 15 pixels ( $\sim 100 \mu\text{m}$  on the image y-axis in high-speed Spectralis OCT imaging). Additionally, regions with MNV or GA, where the absence of EZ or ELM peaks impedes accurate reflectivity assessment, were also excluded.

### Functional probing

As part of the MACUSTAR protocol, BCVA, low-luminance visual acuity, Moorfields Acuity Test, and low-luminance deficit (calculated as low-luminance visual acuity minus BCVA) were assessed using the ETDRS charts and quantified on a logMAR scale. The MAT utilizes pseudo high-pass letter optotypes, designed to reduce low spatial frequency cues, making optotype recognition more dependent on resolution. This improves repeatability and may enhance sensitivity to early AMD-related vision loss<sup>52</sup>. Additionally, contrast sensitivity was assessed using the Pelli Robson Contrast Sensitivity Test, measured on the logCS scale. The assessment of retinal function further comprised mesopic FCP utilizing the MAIA microperimeter (software version 2.5.1, iCare, Padua, Italy). Functional testing procedures have been extensively described in previous publications<sup>23,29</sup>.

Specifically, with regard to FCP, a customized testing grid consisting of 33 stimulus points located at fixed degrees ( $0^\circ$ ,  $1^\circ$ ,  $3^\circ$ ,  $5^\circ$ , and  $7^\circ$ ), with the fovea serving as the central point, was employed<sup>53</sup>. Mesopic FCP employed a Goldmann size III stimulus ( $0.43^\circ$  diameter) for 200 ms, with a dynamic range of 36 dB. A 4–2 strategy adjusted stimulus intensity based on responses to determine thresholds, with a background luminance



**Fig. 2.** A representative case illustrating peak determination by the automated method. The left panel shows an OCT B-scan with the external limiting membrane (ELM), ellipsoid zone (EZ), and retinal pigment epithelium (RPE) labeled. White lines indicate the region of interest used for reflectivity analysis. The right panel presents the corresponding pixel intensity profile, where green and red vertical lines mark the peak detection areas for EZ and ELM, respectively. Colored rectangles denote peaks identified by the algorithm: RPE (red), EZ (yellow), and ELM (purple).

of 1.27 cd/m<sup>2</sup>. A fixation target (3° radius, 1-pixel thickness) aided in stable fixation. After dilation with 1% tropicamide, participants underwent 5 min of dark adaptation in a fully dark room to ensure consistent testing conditions.

### Analyses of the rEZR and retinal function

Analyses of the rEZR and retinal function employed global, locally averaged, and spatially resolved models. In the global model, the mean rEZR from the entire SD-OCT scan was tested for association with the mesAT in decibels across all 33 stimulus points.

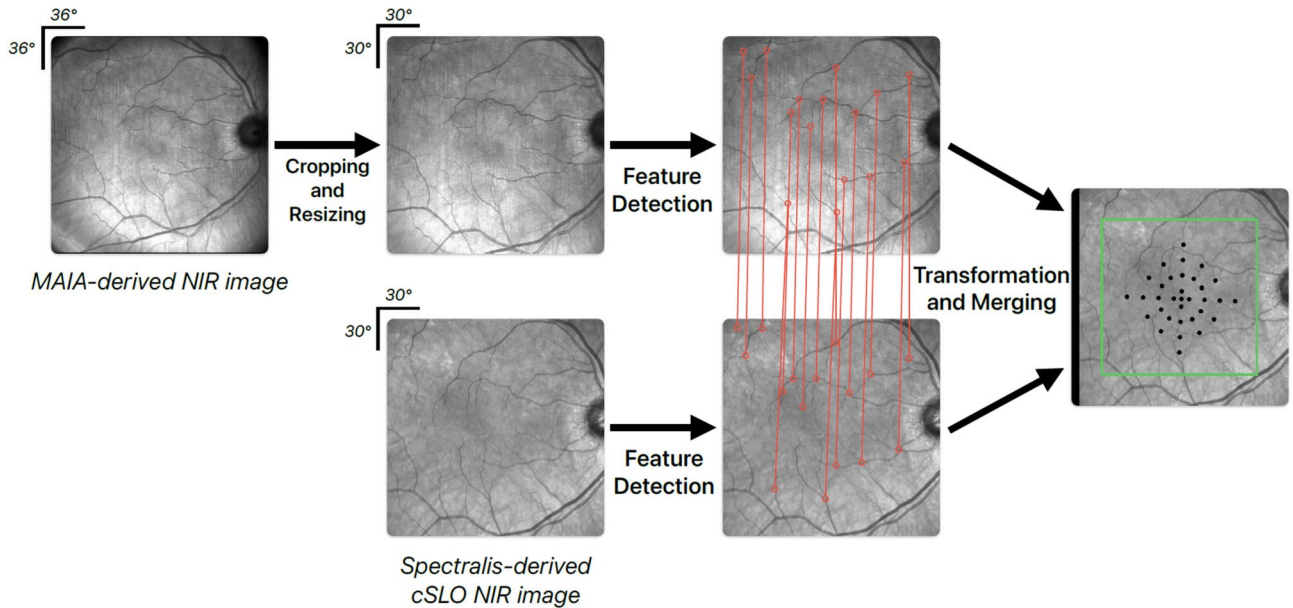
In the locally averaged model, the rEZR was determined at the 33 stimulus points of the FCP grid, assessing areas twice the diameter of each point. The mean rEZR per participant was then tested for its association with the average threshold.

The spatially resolved model calculated the rEZR at each FCP point (twice the stimulus point diameter) to test associations between the rEZR and localized retinal sensitivity (dB), providing a more detailed analysis of structural and functional associations.

The associations between the rEZR and other functional tests were also tested globally and spatially. The global model used the mean rEZR for the entire SD-OCT scan, while the spatially resolved analysis focused on the central subfield (1 mm diameter) of the ETDRS grid to test associations with functional test values.

### Alignment of structural and FCP-derived functional study data

For a spatially-resolved analysis of the rEZR's functional impact, structural and functional study data were precisely aligned using corresponding en-face near-infrared reflectance images from FCP testing and confocal scanning laser ophthalmoscopy imaging of the SD-OCT dataset (Fig. 3). The initial pre-processing included cropping and resizing the FCP-derived near-infrared reflectance images to match the frame (30° × 30°) and size (768 × 768 pixels) of the confocal scanning laser ophthalmoscopy near-infrared reflectance images. The alignment of the structural and functional data was then accomplished using the “SuperRetina” registration method, a deep learning-based technique specifically trained for the accurate registration of retinal imaging data<sup>54</sup>. This approach allows for a reliable alignment, capable of compensating for noise, artifacts, or variable



**Fig. 3.** Illustration of the alignment process of structural, i.e. Spectralis spectral-domain optical coherence tomography (SD-OCT) imaging derived, and functional, i.e. MAIA fundus-controlled perimetry (FCP)-derived, study data. The near-infrared image (NIR) of the FCP-data was cropped and resized to match the image dimensions of the SD-OCT derived NIR image. The deep-learning algorithm “SuperRetina” by Liu et al. was applied to align the NIR images of the FCP and SD-OCT study data using landmark correspondences<sup>54</sup>.

image quality. The alignment of deep learning-registered images was visually verified by overlaying them in two color channels to ensure accuracy. No deviations were observed, confirming the images were consistently aligned and suitable for analysis.

### Statistical analysis

The study included a descriptive analysis that summarized the baseline characteristics of all participants with valid MAIA exams and available rEZR, focusing on the means and standard deviations.

Analyses were performed using multivariable linear models, adjusted for age, sex, and AMD stage, with functional measures as dependent variables. Additionally, univariate linear regressions were conducted to individually assess these relationships. For the spatially resolved FCP-analysis, a linear mixed-effects model was applied, using the retinal sensitivity values (dB) at each topographically aligned stimulus point as the outcome measures. A patient’s random intercept term was included to account for multiple measurements within the same eye. Further, the spatially resolved model included a spline term for the eccentricity of the rEZR within the volumetric SD-OCT raster scan. For all models, coefficient estimates were assessed, including calculation of 95% confidence intervals.

Descriptive p-values are reported without adjustment for multiple testing, as each functional parameter was analyzed independently for its association with the rEZR in this exploratory study. Since the analyses were not conducted within a single multivariate framework, the risk of false positive findings is minimized, and statistical adjustment for multiple comparisons is not required. A significance level of 0.05 was considered. All analyses were performed using R Version 4.3.0<sup>55</sup>.

### Data availability

The datasets generated during and/or analyzed during the current study are available from the corresponding author on reasonable request.

Received: 5 February 2025; Accepted: 30 April 2025

Published online: 20 June 2025

### References

1. Wong, W. L. et al. Global prevalence of age-related macular degeneration and disease burden projection for 2020 and 2040: a systematic review and meta-analysis. *Lancet Glob. Health* **2**, e106–e116. [https://doi.org/10.1016/S2214-109X\(13\)70145-1](https://doi.org/10.1016/S2214-109X(13)70145-1) (2014).
2. Lim, L. S., Mitchell, P., Seddon, J. M., Holz, F. G. & Wong, T. Y. Age-related macular degeneration. *Lancet* **379**, 1728–1738. [https://doi.org/10.1016/S0140-6736\(12\)60282-7](https://doi.org/10.1016/S0140-6736(12)60282-7) (2012).
3. Ferris, F. L. et al. Clinical classification of age-related macular degeneration. *Ophthalmology* **120**, 844–851. <https://doi.org/10.1016/j.ophtha.2012.10.036> (2013).
4. Davis, M. D. et al. The Age-Related Eye Disease Study severity scale for age-related macular degeneration: AREDS Report No. 17. *Arch. Ophthalmol. (Chicago, Ill. 1960)* **123**, 1484–1498. <https://doi.org/10.1001/archophth.123.11.1484> (2005).

5. Stahl, A. The diagnosis and treatment of age-related macular degeneration. *Deutsches Arzteblatt Int.* **117**, 513–520. <https://doi.org/10.3238/arztebl.2020.0513> (2020).
6. Gin, T. J., Wu, Z., Chew, S. K. H., Guymer, R. H. & Luu, C. D. Quantitative analysis of the ellipsoid zone intensity in phenotypic variations of intermediate age-related macular degeneration. *Investig. Ophthalmol. Vis. Sci.* **58**, 2079–2086. <https://doi.org/10.1167/iovs.16-20105> (2017).
7. Wu, Z., Ayton, L. N., Guymer, R. H. & Luu, C. D. Relationship between the second reflective band on optical coherence tomography and multifocal electroretinography in age-related macular degeneration. *Investig. Ophthalmol. Vis. Sci.* **54**, 2800–2806. <https://doi.org/10.1167/iovs.13-11613> (2013).
8. Wu, Z., Ayton, L. N., Guymer, R. H. & Luu, C. D. Second reflective band intensity in age-related macular degeneration. *Ophthalmology* **120**, 1307–8.e1. <https://doi.org/10.1016/j.ophtha.2012.12.047> (2013).
9. Tao, L. W., Wu, Z., Guymer, R. H. & Luu, C. D. Ellipsoid zone on optical coherence tomography: a review. *Clin. Exp. Ophthalmol.* **44**, 422–430. <https://doi.org/10.1111/ceo.12685> (2016).
10. Borrelli, E. et al. Photoreceptor alteration in intermediate age-related macular degeneration. *Sci. Rep.* **10**, 21036. <https://doi.org/10.1038/s41598-020-78201-9> (2020).
11. PR Newswire. Stealth Biotherapeutics ANNOUNCES positive end-of-phase 2 meeting with FDA on the development of Elamipretide in patients with dry age-related macular degeneration. <https://www.prnewswire.com/news-releases/stealth-biotherapeutics-announces-positive-end-of-phase-2-meeting-with-fda-on-the-development-of-elamipretide-in-patients-with-dry-age-related-macular-degeneration-301848690.html> (2023).
12. Safmannshausen, M. et al. Relative ellipsoid zone reflectivity and its association with disease severity in age-related macular degeneration: a MACUSTAR study report. *Sci. Rep.* **12**, 14933. <https://doi.org/10.1038/s41598-022-18875-5> (2022).
13. Thiele, S. et al. Prognostic value of intermediate age-related macular degeneration phenotypes for geographic atrophy progression. *Br. J. Ophthalmol.* **105**, 239–245. <https://doi.org/10.1136/bjophthalmol-2020-316004> (2021).
14. Sassmannshausen, M. et al. Longitudinal analysis of structural and functional changes in presence of reticular pseudodrusen associated with age-related macular degeneration. *Investig. Ophthalmol. Vis. Sci.* **61**, 19. <https://doi.org/10.1167/iovs.61.10.19> (2020).
15. Thiele, S. et al. Natural history of the relative ellipsoid zone reflectivity in age-related macular degeneration. *Ophthalmol. Retina* **6**, 1165–1172. <https://doi.org/10.1016/j.oret.2022.06.001> (2022).
16. Spaide, R. F. & Curcio, C. A. Anatomical correlates to the bands seen in the outer retina by optical coherence tomography: literature review and model. *Retina (Philadelphia, Pa.)* **31**, 1609–1619. <https://doi.org/10.1097/IAE.0b013e3182247535> (2011).
17. Staurenghi, G., Sadda, S., Chakravarthy, U. & Spaide, R. F. Proposed lexicon for anatomic landmarks in normal posterior segment spectral-domain optical coherence tomography: the IN•OCT consensus. *Ophthalmology* **121**, 1572–1578. <https://doi.org/10.1016/j.ophtha.2014.02.023> (2014).
18. Litts, K. M., Zhang, Y., Freund, K. B. & Curcio, C. A. Optical coherence tomography and histology of age-related macular degeneration support mitochondria as reflectivity sources. *Retina (Philadelphia, Pa.)* **38**, 445–461. <https://doi.org/10.1097/IAE.0000000000001946> (2018).
19. Litts, K. M., Messinger, J. D., Freund, K. B., Zhang, Y. & Curcio, C. A. Inner segment remodeling and mitochondrial translocation in cone photoreceptors in age-related macular degeneration with outer retinal tubulation. *Investig. Ophthalmol. Vis. Sci.* **56**, 2243–2253. <https://doi.org/10.1167/iovs.14-15838> (2015).
20. Lee, K. E., Heitkotter, H. & Carroll, J. Challenges associated with ellipsoid zone intensity measurements using optical coherence tomography. *Transl. Vis. Sci. Technol.* **10**, 27. <https://doi.org/10.1167/tvst.10.12.27> (2021).
21. Berkowitz, B. A. et al. Functional changes within the rod inner segment ellipsoid in wildtype mice: an optical coherence tomography and electron microscopy study. *Investig. Ophthalmol. Vis. Sci.* **63**, 8. <https://doi.org/10.1167/iovs.63.8.8> (2022).
22. Beauvoit, B., Evans, S. M., Jenkins, T. W., Miller, E. E. & Chance, B. Correlation between the light scattering and the mitochondrial content of normal tissues and transplantable rodent tumors. *Anal. Biochem.* **226**, 167–174. <https://doi.org/10.1006/abio.1995.1205> (1995).
23. Higgins, B. E. et al. Test-retest variability and discriminatory power of measurements from microperimetry and dark adaptation assessment in people with intermediate age-related macular degeneration—A MACUSTAR study report. *Transl. Vis. Sci. Technol.* **12**, 19. <https://doi.org/10.1167/tvst.12.7.19> (2023).
24. Hoang, Q. V., Linsenmeier, R. A., Chung, C. K. & Curcio, C. A. Photoreceptor inner segments in monkey and human retina: mitochondrial density, optics, and regional variation. *Vis. Neurosci.* **19**, 395–407. <https://doi.org/10.1017/s0952523802194028> (2002).
25. Jaiswal, M. et al. Impaired mitochondrial energy production causes light-induced photoreceptor degeneration independent of oxidative stress. *PLoS Biol.* **13**, e1002197. <https://doi.org/10.1371/journal.pbio.1002197> (2015).
26. Drexler, W. et al. Enhanced visualization of macular pathology with the use of ultrahigh-resolution optical coherence tomography. *Arch. Ophthalmol. (Chicago, Ill.: 1960)* **121**, 695–706. <https://doi.org/10.1001/archophth.121.5.695> (2003).
27. Lesmes, L. A., Jackson, M. L. & Bex, P. Visual function endpoints to enable dry amd clinical trials. *Drug Discov. Today. Ther. Strateg.* **10**, e43–e50. <https://doi.org/10.1016/j.ddstr.2012.11.002> (2013).
28. Peterson, C. L. et al. Monocular and binocular visual function assessments and activities of daily living performance in age-related macular degeneration. *Ophthalmol. Retina* **8**, 32–41. <https://doi.org/10.1016/j.oret.2023.08.013> (2024).
29. Dunbar, H. M. P. et al. Repeatability and discriminatory power of chart-based visual function tests in individuals with age-related macular degeneration: a MACUSTAR study report. *JAMA Ophthalmol.* **140**, 780–789. <https://doi.org/10.1001/jamaophthalmol.2022.2113> (2022).
30. Yordi, S. et al. Ellipsoid zone integrity and visual function in dry age-related macular degeneration. *J. Personal. Med.* **14**. <https://doi.org/10.3390/jpm14050543> (2024).
31. Pappuru, R. R. et al. Relationship between outer retinal thickness substructures and visual acuity in eyes with dry age-related macular degeneration. *Investig. Ophthalmol. Vis. Sci.* **52**, 6743–6748. <https://doi.org/10.1167/iovs.10-6723> (2011).
32. Birner, K. et al. Structure-function correlation of deep-learning quantified ellipsoid zone and retinal pigment epithelium loss and microperimetry in geographic atrophy. *Investig. Ophthalmol. Vis. Sci.* **66**, 26. <https://doi.org/10.1167/iovs.66.3.26> (2025).
33. Wu, Z., Ayton, L. N., Guymer, R. H. & Luu, C. D. Comparison between multifocal electroretinography and microperimetry in age-related macular degeneration. *Investig. Ophthalmol. Vis. Sci.* **55**, 6431–6439. <https://doi.org/10.1167/iovs.14-14407> (2014).
34. Chandramohan, A. et al. Visual function measures in early and intermediate age-related macular degeneration. *Retina (Philadelphia, Pa.)* **36**, 1021–1031. <https://doi.org/10.1097/IAE.0000000000001002> (2016).
35. Inoue, M. et al. Preoperative inner segment/outer segment junction in spectral-domain optical coherence tomography as a prognostic factor in epiretinal membrane surgery. *Retina (Philadelphia, Pa.)* **31**, 1366–1372. <https://doi.org/10.1097/IAE.0b013e318203c156> (2011).
36. Maheshwary, A. S. et al. The association between percent disruption of the photoreceptor inner segment-outer segment junction and visual acuity in diabetic macular edema. *Am. J. Ophthalmol.* **150**, 63–67.e1. <https://doi.org/10.1016/j.ajo.2010.01.039> (2010).
37. Sheth, S., Dabir, S., Natarajan, S., Mhatre, A. & Labauri, N. Spectral domain-optical coherence tomography study of retinas with a normal foveal contour and thickness after retinal detachment surgery. *Retina (Philadelphia, Pa.)* **30**, 724–732. <https://doi.org/10.1097/iae.0b013e3181cd47bb> (2010).

38. Wakabayashi, T., Fujiwara, M., Sakaguchi, H., Kusaka, S. & Oshima, Y. Foveal microstructure and visual acuity in surgically closed macular holes: spectral-domain optical coherence tomographic analysis. *Ophthalmology* **117**, 1815–1824. <https://doi.org/10.1016/j.ophtha.2010.01.017> (2010).
39. Wu, Z., Ayton, L. N., Luu, C. D. & Guymer, R. H. Relationship between retinal microstructures on optical coherence tomography and microperimetry in age-related macular degeneration. *Ophthalmology* **121**, 1445–1452. <https://doi.org/10.1016/j.ophtha.2014.01.025> (2014).
40. Pilotto, E. et al. Microperimetry, fundus autofluorescence, and retinal layer changes in progressing geographic atrophy. *Can. J. Ophthalmol.* **48**, 386–393. <https://doi.org/10.1016/j.cjco.2013.03.022> (2013).
41. Kim, Y. M., Kim, J. H. & Koh, H. J. Improvement of photoreceptor integrity and associated visual outcome in neovascular age-related macular degeneration. *Am. J. Ophthalmol.* **154**, 164–173.e1. <https://doi.org/10.1016/j.ajo.2012.01.030> (2012).
42. Laíns, I. et al. Structural changes associated with delayed dark adaptation in age-related macular degeneration. *Ophthalmology* **124**, 1340–1352. <https://doi.org/10.1016/j.ophtha.2017.03.061> (2017).
43. Tan, T. F. et al. Defining the structure-function relationship of specific lesions in early and advanced age-related macular degeneration. *Sci. Rep.* **14**, 8724. <https://doi.org/10.1038/s41598-024-54619-3> (2024).
44. Terheyden, J. H. et al. Clinical study protocol for a low-interventional study in intermediate age-related macular degeneration developing novel clinical endpoints for interventional clinical trials with a regulatory and patient access intention-MACUSTAR. *Trials* **21**, 659. <https://doi.org/10.1186/s13063-020-04595-6> (2020).
45. Finger, R. P. et al. MACUSTAR: Development and clinical validation of functional, structural, and patient-reported endpoints in intermediate age-related macular degeneration. *Ophthalmologica. J. Int. d'ophthalmol. Int. J. Ophthalmol. Zeitschrift für Augenheilkunde* **241**, 61–72. <https://doi.org/10.1159/000491402> (2019).
46. Terheyden, J. H. et al. MACUSTAR: Entwicklung und klinische Validierung von funktionellen, strukturellen und patientenberichteten Endpunkten bei intermediärer altersabhängiger Makuladegeneration. *Der Ophthalmologe: Zeitschrift der Deutschen Ophthalmologischen Gesellschaft* **116**, 1186–1193. <https://doi.org/10.1007/s00347-019-0907-1> (2019).
47. Thiele, S. et al. Validation of an automated quantification of relative ellipsoid zone reflectivity on spectral domain-optical coherence tomography images. *Transl. Vis. Sci. Technol.* **9**, 17. <https://doi.org/10.1167/tvst.9.11.17> (2020).
48. Ross, D. H. et al. RefMoB, a reflectivity feature model-based automated method for measuring four outer retinal hyperreflective bands in optical coherence tomography. *Investig. Ophthalmol. Vis. Sci.* **56**, 4166–4176. <https://doi.org/10.1167/iovs.14-15256> (2015).
49. Thiele, S. et al. Prognostic value of retinal layers in comparison with other risk factors for conversion of intermediate age-related macular degeneration. *Ophthalmol. Retina* **4**, 31–40. <https://doi.org/10.1016/j.oret.2019.08.003> (2020).
50. Goerdts, L. et al. Relative ellipsoid zone reflectivity in macular telangiectasia type 2. *Investig. Ophthalmol. Vis. Sci.* **64**, 21. <https://doi.org/10.1167/iovs.64.10.21> (2023).
51. Chen, L.-C., Papandreou, G., Schroff, F. & Adam, H. Rethinking Atrous Convolution for Semantic Image Segmentation (2017).
52. Shah, N., Dakin, S. C., Redmond, T. & Anderson, R. S. Vanishing Optotype acuity: repeatability and effect of the number of alternatives. *Ophthalm. Physiol. Opt. J. Br. Coll. Ophthalm. Opt. (Optometrists)* **31**, 17–22. <https://doi.org/10.1111/j.1475-1313.2010.00806.x> (2011).
53. Welker, S. G. et al. Retest reliability of mesopic and dark-adapted microperimetry in patients with intermediate age-related macular degeneration and age-matched controls. *Investig. Ophthalmol. Vis. Sci.* **59**, 152–159. <https://doi.org/10.1167/iovs.18-23878> (2018).
54. Liu, J., Li, X., Wei, Q., Xu, J. & Ding, D. Semi-Supervised Keypoint Detector and Descriptor for Retinal Image Matching (2022).
55. R Core Team. *R: A Language and Environment for Statistical Computing* (2023).

## Acknowledgements

The communication reflects the authors' views. Neither IMI nor the European Union, EFPIA, or any associated partners are responsible for any use that may be made of the information contained therein.

## Author contributions

Y.N.L. and S.T. are responsible for conception and design of the study and analysis of the data. All authors contributed to interpretation of data, drafting of the manuscript, critical revision of the manuscript, final approval of the manuscript.

## Funding

Open Access funding enabled and organized by Projekt DEAL.

This work was supported by the German Research Foundation with a research grant (DFG, TH 2514/2-1) and by the EYEnovative research grant of the Novartis Pharma GmbH, Germany to ST. Further, this project has received funding from the Innovative Medicines Initiative (IMI) 2 Joint Undertaking under grant agreement No. 116076. This Joint Undertaking receives support from the European Union's Horizon 2020 research and innovation programme and the European Federation of Pharmaceutical Industries and Associations (EFPIA). This communication reflects the author's view and neither IMI nor the European Union nor EFPIA are responsible for any use that may be made of the information contained therein. The sponsors or funding organizations had no role in the design or conduct of the MACUSTAR study (project number: 116076) research.

## Declarations

## Competing interests

The authors declare no competing interests.

## Additional information

**Supplementary Information** The online version contains supplementary material available at <https://doi.org/10.1038/s41598-025-00735-7>.

**Correspondence** and requests for materials should be addressed to S.T.

**Reprints and permissions information** is available at [www.nature.com/reprints](http://www.nature.com/reprints).

**Publisher's note** Springer Nature remains neutral with regard to jurisdictional claims in published maps and institutional affiliations.

**Open Access** This article is licensed under a Creative Commons Attribution 4.0 International License, which permits use, sharing, adaptation, distribution and reproduction in any medium or format, as long as you give appropriate credit to the original author(s) and the source, provide a link to the Creative Commons licence, and indicate if changes were made. The images or other third party material in this article are included in the article's Creative Commons licence, unless indicated otherwise in a credit line to the material. If material is not included in the article's Creative Commons licence and your intended use is not permitted by statutory regulation or exceeds the permitted use, you will need to obtain permission directly from the copyright holder. To view a copy of this licence, visit <http://creativecommons.org/licenses/by/4.0/>.

© The Author(s) 2025

## the MACUSTAR consortium

H. Agostini<sup>17</sup>, L. Altay<sup>24</sup>, R. Atia<sup>12</sup>, F. Bandello<sup>23</sup>, P. G. Basile<sup>30</sup>, C. Behning<sup>40</sup>, M. Belmouhand<sup>18</sup>, M. Berger<sup>40</sup>, A. Binns<sup>35</sup>, C. J. F. Boon<sup>25</sup>, M. Böttger<sup>27</sup>, C. Bouchet<sup>12</sup>, J. E. Brazier<sup>37</sup>, T. Butt<sup>38</sup>, C. Carapezzi<sup>36</sup>, J. Carlton<sup>37</sup>, A. Carneiro<sup>31</sup>, A. Charil<sup>12</sup>, R. Coimbra<sup>12</sup>, M. Cozzi<sup>19</sup>, D. P. Crabb<sup>35</sup>, J. Cunha-Vaz<sup>30</sup>, C. Dahlke<sup>24</sup>, L. Sisternes<sup>39</sup>, H. Dunbar<sup>38</sup>, R. P. Finger<sup>1</sup>, E. Fletcher<sup>22</sup>, H. Floyd<sup>12</sup>, C. Francisco<sup>30</sup>, M. Gutfleisch<sup>26</sup>, R. Hogg<sup>20</sup>, F. G. Holz<sup>1</sup>, C. B. Hoyng<sup>34</sup>, A. Kilani<sup>21</sup>, J. Krätzschar<sup>27</sup>, L. Kühlewein<sup>14</sup>, M. Larsen<sup>18</sup>, S. Leal<sup>27</sup>, Y. T. E. Lechanteur<sup>34</sup>, M. Liew<sup>12</sup>, U. F. O. Luhmann<sup>28</sup>, A. Lüning<sup>1</sup>, I. Marques<sup>30</sup>, C. Martinho<sup>30</sup>, A. Miliu<sup>1</sup>, G. Montesano<sup>12</sup>, Z. Mulyukov<sup>12</sup>, M. Paques<sup>32</sup>, B. Parodi<sup>23</sup>, M. Parravano<sup>16</sup>, S. Penas<sup>12</sup>, T. Peters<sup>14</sup>, T. Peto<sup>20</sup>, M. Pfau<sup>1</sup>, S. Priglinger<sup>15</sup>, D. Rowen<sup>37</sup>, G. S. Rubin<sup>38</sup>, J. Sahel<sup>32</sup>, C. Sánchez<sup>34</sup>, O. Sander<sup>12</sup>, M. Saßmannshausen<sup>1</sup>, M. Schmid<sup>40</sup>, S. Schmitz-Valckenberg<sup>1</sup>, H. Schrunner-Fenske<sup>29</sup>, J. Siedlecki<sup>15</sup>, R. Silva<sup>30</sup>, A. Skelly<sup>12</sup>, E. Souied<sup>13</sup>, G. Staurengi<sup>19</sup>, L. Stöhr<sup>29</sup>, D. J. Taylor<sup>35</sup>, J. H. Terheyden<sup>1</sup>, S. Thiele<sup>1</sup>, A. Tufail<sup>33</sup>, M. Varano<sup>16</sup>, L. Vieweg<sup>29</sup>, A. Wolf<sup>21</sup> & N. Zakaria<sup>12</sup>

<sup>12</sup>Novartis Pharma AG, Basel, Switzerland. <sup>13</sup>Centre Hospitalier Intercommunal de Creteil (HIC), University Eye Clinic, Centre Hospitalier Creteil, Paris, France. <sup>14</sup>STZ Biomed & STZ Eyetril at the Center of Ophthalmology, University Hospital Tuebingen, Tuebingen, Germany. <sup>15</sup>Ludwig-Maximilians-Universitaet Muenchen (LMU), University Eye Hospital Munich, Munich, Germany. <sup>16</sup>G. B. Bietti Eye Foundation-IRCCS, Rome, Italy. <sup>17</sup>Department of Ophthalmology, Universitaetsklinikum Freiburg (UKLFR), University of Freiburg, Freiburg, Germany. <sup>18</sup>Department of Ophthalmology Rigshospitalet-Glostrup, Copenhagen University Glostrup, Copenhagen, Denmark. <sup>19</sup>Department of Ophthalmology Luigi Sacco Hospital, University of Milan, Milan, Italy. <sup>20</sup>Ophthalmology and Vision Sciences The Queen's University an Royal Group of Hospitals Trust Belfast, Belfast, Northern Ireland. <sup>21</sup>Department of Ophthalmology, University of Ulm, Ulm, Germany. <sup>22</sup>Clinical Trial Unit, Department of Ophthalmology Gloucestershire Hospitals, NHS Foundation Trust Cheltenham, Cheltenham, UK. <sup>23</sup>Department of Ophthalmology, University Vita Salute-Scientific Institute of San Raffael, Milan, Italy. <sup>24</sup>Universität zu Köln, Zentrum für Augenheilkunde, Cologne, Germany. <sup>25</sup>Department of Ophthalmology, Leiden University Medical Center, Leiden, The Netherlands. <sup>26</sup>Department of Ophthalmology, St. Franziskus Hospital, Münster, Germany. <sup>27</sup>BAYER AG, Leverkusen, Germany. <sup>28</sup>F. Hoffmann-La Roche Ltd, Basel, Switzerland. <sup>29</sup>European Clinical Research Infrastructure Network (ECRIN), Paris, France. <sup>30</sup>AIBILI Association for Innovation and Biomedical Research on Light and Image (AIBILI), Coimbra, Portugal. <sup>31</sup>Department of Ophthalmology Porto Medical School, Centro Hospitalar de Sao Joao EPE (Hospital Sao Joao) Hospital S. Joao Porto, Porto, Portugal. <sup>32</sup>Centre Hospitalier National d'Ophthalmologie des Quinze-Vingts, Paris, France. <sup>33</sup>Moorfields Eye Hospital NHS Foundation Trust (MBRC), London, UK. <sup>34</sup>Stichting Katholieke Universiteit/Radboud University Medical Center (SRUMC), Radboud University, Nijmegen Medical Center, Nijmegen, The Netherlands. <sup>35</sup>City University London, London, UK. <sup>36</sup>Fondation Voir et Etendre, Paris, France. <sup>37</sup>University of Sheffield, Sheffield, UK. <sup>38</sup>University College London (UCL), London, UK. <sup>39</sup>Carl Zeiss Meditec, AG., Jena, Germany. <sup>40</sup>Institute for Medical Biometry, Informatics and Epidemiology, Medical Faculty, University of Bonn, Bonn, Germany.