



Deposited via The University of Sheffield.

White Rose Research Online URL for this paper:

<https://eprints.whiterose.ac.uk/id/eprint/229709/>

Version: Published Version

Article:

Baumeister, H., Gellersen, H.M., Polk, S.E. et al. (2025) Disease stage-specific atrophy markers in Alzheimer's disease. *Alzheimer's & Dementia*, 21 (7). e70482. ISSN: 1552-5260

<https://doi.org/10.1002/alz.70482>

Reuse

This article is distributed under the terms of the Creative Commons Attribution (CC BY) licence. This licence allows you to distribute, remix, tweak, and build upon the work, even commercially, as long as you credit the authors for the original work. More information and the full terms of the licence here:

<https://creativecommons.org/licenses/>

Takedown

If you consider content in White Rose Research Online to be in breach of UK law, please notify us by emailing eprints@whiterose.ac.uk including the URL of the record and the reason for the withdrawal request.

RESEARCH ARTICLE

Disease stage-specific atrophy markers in Alzheimer's disease

Hannah Baumeister¹ | Helena M. Gellersen^{1,2,3} | Sarah E. Polk¹ | René Lattmann^{1,4} | Anika Wuestefeld⁵ | Laura E. M. Wisse⁶ | Trevor Glenn⁷ | Renat Yakupov^{1,4} | Melina Stark^{8,9} | Luca Kleineidam^{8,9} | Sandra Roeske⁸ | Barbara Marcos Morgado¹⁰ | Hermann Esselmann¹⁰ | Frederic Brosseron⁸ | Alfredo Ramirez^{8,9,11,12,13} | Falk Lüsebrink¹ | Matthis Synofzik^{14,15,16} | Björn H. Schott^{10,17,18} | Matthias C. Schmid^{8,19} | Stefan Hetzer²⁰ | Peter Dechent²¹ | Klaus Scheffler²² | Michael Ewers^{23,24} | Julian Hellmann-Regen^{25,26,27} | Ersin Ersözlü^{25,26,27} | Eike Spruth^{25,28} | Maria Gemenetzi^{25,28} | Klaus Fließbach^{8,9} | Claudia Bartels¹⁰ | Ayda Rostamzadeh²⁹ | Wenzel Glanz¹ | Enise I. Incesoy^{1,4,30} | Daniel Janowitz²⁴ | Boris-Stephan Rauchmann^{31,32,33} | Ingo Kilimann^{34,35} | Sebastian Sodenkamp^{14,36} | Marie Coenjaerts⁸ | Annika Spottke^{8,37} | Oliver Peters^{25,28} | Josef Priller^{25,28,38,39,40} | Anja Schneider^{8,9} | Jens Wiltfang^{10,17,41} | Katharina Buerger^{23,24} | Robert Perneczky^{23,31,42,43} | Stefan Teipel^{34,35} | Christoph Laske^{14,36,44} | Michael Wagner^{8,9} | Gabriel Ziegler^{1,4} | Frank Jessen^{8,11,29} | Emrah Düzel^{1,4} | David Berron^{1,5,45} | for the DELCODE study group

Correspondence:

Hannah Baumeister and David Berron,
German Center for Neurodegenerative
Diseases (DZNE), Leipziger Straße 44, 39120
Magdeburg, Germany.
Email: hannah.baumeister@dzne.de and
david.berron@dzne.de

Funding information

Bundesministerium für Bildung und Forschung,
Grant/Award Number: 13GW0479B; National
Institutes of Health, Grant/Award Number:
R01-AG070592; MultiPark - a strategic
research area at Lund University; St John's
College, University of Cambridge; DZNE
Stiftung; Joachim Herz Stiftung; BrightFocus
Foundation; Deutsches Zentrum für
Neurodegenerative Erkrankungen; Deutsche
Forschungsgemeinschaft, Grant/Award
Number: 425899996

Abstract

INTRODUCTION: Structural magnetic resonance imaging (MRI) often lacks diagnostic, prognostic, and monitoring value in Alzheimer's disease (AD), particularly in early disease stages. To improve its utility, we aimed to identify optimal atrophy markers for different intended uses.

METHODS: We included 363 older adults; cognitively unimpaired individuals who were negative or positive for amyloid beta (A β) and A β -positive patients with subjective cognitive decline, mild cognitive impairment, or dementia of the Alzheimer type. MRI and neuropsychological assessments were administered annually for up to 3 years.

RESULTS: Accelerated atrophy of medial temporal lobe subregions was evident already during preclinical AD. Symptomatic disease stages most notably differed in their hippocampal and parietal atrophy signatures. Atrophy-cognition relationships varied by intended use and disease stage.

This is an open access article under the terms of the [Creative Commons Attribution](https://creativecommons.org/licenses/by/4.0/) License, which permits use, distribution and reproduction in any medium, provided the original work is properly cited.

© 2025 The Author(s). *Alzheimer's & Dementia* published by Wiley Periodicals LLC on behalf of Alzheimer's Association.

DISCUSSION: With the appropriate marker, MRI can detect abnormal atrophy already during preclinical AD. To optimize performance, atrophy markers should be tailored to the targeted disease stage and intended use.

KEYWORDS

imaging biomarker, longitudinal atrophy, magnetic resonance imaging, medial temporal lobe, parietal lobe

Highlights

- Subregional atrophy markers detect ongoing atrophy in preclinical Alzheimer's disease (AD).
- Subjective cognitive decline in preclinical AD links to manifest atrophy.
- Optimal atrophy markers differ by the disease stage and intended use.

1 | BACKGROUND

Aside from accumulations of amyloid beta ($A\beta$) and neurofibrillary tangles (NFTs) of hyperphosphorylated tau, neurodegeneration is a pathological hallmark of Alzheimer's disease (AD).¹ Structural magnetic resonance imaging (MRI) is commonly used for assessing gray matter atrophy as a downstream biomarker of neurodegeneration, offering advantages like non-invasiveness, good accessibility, and robust associations with clinical phenotypes.^{2,3} MRI-based atrophy assessments typically rely on quantitative measures of gray matter volume or cortical thickness, either globally or in regions of interest (ROIs), including the hippocampus or the "AD signature cortex." While often applied across disease stages, these generic markers tend to lack sensitivity to subtle changes in early disease stages, particularly compared to fluid biomarkers or molecular imaging.^{1,4–6} This limitation is critical, as preclinical and early prodromal disease stages are increasingly recognized as key windows for effective disease-modifying intervention.^{7,8}

Atrophy assessment at a given AD stage may be improved by guiding marker selection by the spatiotemporal progression of underlying pathology. Previous studies have demonstrated that NFTs tend to co-localize with subsequent hotspots of neurodegeneration.^{3,9–11} The medial temporal lobe (MTL) is among the earliest brain regions affected by AD-related NFTs and its subregions—including hippocampal subfields, the amygdala, and cortical structures—exhibit varying degrees and timelines of NFT accumulation.^{10,12–15} This makes MTL subregional volumetry a promising approach for providing fine-grained insights into early AD progression. In fact, previous research has shown that MTL subregions particularly vulnerable to early NFT deposition (e.g., the [trans-]entorhinal cortex) exhibit atrophy as early as preclinical AD when measured both through absolute markers as well as their longitudinal rates of chan.^{16–25} With disease progression, NFTs increasingly occur in medial and posterior parietal structures, where atrophy has been described in prodromal and fully manifest AD.^{10,26,27} Although this previous research suggests that NFT progression patterns are reflected in the timeline of MTL and parietal subregional atrophy, the transferability of these findings to real-world memory

clinic settings is unknown, requiring validation through prospective studies conducted in such specialized centers. Notably, patients with subjective cognitive decline (SCD, i.e., individuals subjectively experiencing memory impairment while performing within normal ranges on standard neuropsychological inventories) were often underrepresented in relevant previous studies, despite their potential as early intervention targets given their early presentation to primary and secondary care.

A biomarker's performance may not just vary by disease stage, but also by intended use. Intended uses for biomarkers are manifold and include diagnosis, prognosis, and disease monitoring.^{1,8,28} Thus, developing sensitive atrophy markers for different intended uses and disease stages requires detailed knowledge of each candidate marker's properties beyond its earliest point of abnormality, including rates of change and relationships with neuropsychological inventories along the disease course.¹ Although MTL and parietal subregional atrophy markers have been linked to cognitive decline in AD (e.g., see Chauveau et al.,¹⁷ Xie et al.,²⁹ and Eskildsen et al.³⁰), no study has systematically examined their associations with a broad range of neuropsychological measures across disease stages and intended uses.

1.1 | The present study

This study aims to thoroughly characterize MTL and parietal subregional atrophy markers in a prospective, memory clinic-based cohort, addressing different intended uses in a disease stage-dependent manner. First, we assess the progression of the investigated atrophy markers across clinical disease stages, using both cross-sectional and longitudinal recordings to distinguish accumulated and ongoing atrophy. Our sample spans National Institute on Aging–Alzheimer's Association (NIA-AA) clinical stages 1–4,¹ including a group of SCD patients (clinical stage 2) to investigate a potential atrophy signature of subjectively experienced cognitive decline in preclinical AD. Second, we examine how the analyzed atrophy markers develop across

data-driven, continuous disease stages. By integrating clinical and demographic data, this approach enables the investigation of AD progression beyond clinical staging, which is especially valuable in early disease stages, when phenotypical changes are subtle and single biomarkers may be less reliable.³¹ Finally, we investigate the dynamic coupling of atrophy markers and scores on various established neuropsychological inventories for different potential uses, including diagnosis, prognosis, and monitoring at different clinical disease stages.

2 | METHODS

2.1 | Participants and clinical disease staging

We included data from 363 participants enrolled in the DZNE Longitudinal Cognitive Impairment and Dementia Study (DELCODE).³² This sample comprised cognitively unimpaired individuals (CU) who were A β negative (CU A β -, $n = 165$) as well as A β -positive participants representing clinical AD stages 1–4 according to the NIA-AA criteria.¹ Specifically, this included A β -positive CU (CU A β + [stage 1], $n = 30$) and memory clinic referrals with subjective cognitive decline (SCD A β + [stage 2], $n = 78$), mild cognitive impairment (MCI A β + [stage 3], $n = 51$), and mild dementia of the Alzheimer type (DAT A β + [stage 4], $n = 39$).³³ The full inclusion criteria are detailed in the [Supplementary Methods](#).

Participants underwent baseline and annual follow-up assessments including MRI and neuropsychological testing. Given our particular interest in MTL subregions, study visits were only considered if these data were available (see Figure S1 in supporting information for an overview of follow-up availabilities). This resulted in an average of 3.34 (standard deviation [SD] = 0.81) total assessments per subject with an average follow-up interval of 1.08 (SD = 0.26) years between study visits. DELCODE was registered with the German Clinical Trials Registry (DRKS; DRKS00007966) prior to inclusion of the first participants.

2.2 | Fluid biomarkers

Data on A β -positivity were preferentially obtained from lumbar cerebrospinal fluid (CSF; available in $n = 224$, 61.71%, see [Supplementary Methods](#) for details on CSF sampling). A threshold for A β -positivity of ≤ 0.08 was calculated through two-component Gaussian mixture modelling of A β 42/A β 40 ratios (Mesoscale Diagnostics LLC). If CSF was unavailable, we calculated individual probabilities of A β -positivity, ranging from 0 to 1 (least to most likely to be A β -positive in CSF). These probabilities were obtained using a binomial logistic regression model, predicting A β -positivity in CSF with age, apolipoprotein E genotype, plasma phosphorylated tau 181 concentration (Simoa assays; Quanterix), and plasma A β 42/A β 40 ratios (Lumipulse G System assays; Fujirebio Inc.³⁴) included as predictors.³⁵ A positivity cutoff of > 0.639 was determined using the Youden index, applying a cost ratio of 1.5:1 for false negatives versus false positives. This decision was guided by evidence suggesting A β 42/A β 40 ratios to become abnormal earlier in CSF than in the peripheral blood, making specificity a higher priority

RESEARCH IN CONTEXT

- 1. Systematic review:** Previous research has highlighted several shortcomings in the current routine use of structural brain magnetic resonance imaging (MRI) for Alzheimer's disease (AD). Especially given recent advances in disease-modifying treatments, enhancing sensitivity to early disease stages and establishing robust correlations with both current and future cognitive impairment are essential.
- 2. Interpretation:** Our findings indicate that specific, anatomically fine-grained atrophy markers exhibit abnormal reductions already before the manifestation of cognitive impairment. As the disease progresses, different atrophy markers are best suited for distinct purposes, including AD diagnosis, prognosis, and monitoring. These results provide a framework for selecting the most informative MRI readouts based on the targeted disease stage and intended use.
- 3. Future directions:** Future research should validate these findings in independent cohorts and explore the optimal combination of structural MRI markers with other biomarkers for specific applied scenarios.

than sensitivity.³⁶ The model is further described in the [Supplementary Methods](#).

2.3 | Neuropsychological testing

We included a broad range of measures from the DELCODE neuropsychological testing battery, targeting different cognitive domains. This included tests of episodic memory (Free and Cued Selective Reminding Test–Free + Total Recall [FCSRT-96³⁷], Wechsler Memory Scale IV [WMS-IV³⁸] Logical Memory Delayed Recall, Alzheimer's Disease Assessment Scale–Cognitive subscale [ADAS-Cog³⁹] delayed and immediate word recall, Face Name Associative Recognition Task), language (sum of animals and groceries verbal fluency, FCSRT Naming), executive functions (Symbol-Digit Modalities Test [SDMT⁴⁰], time difference of the Trail Making Test Parts B and A [TMT B–A], a Flanker task⁴¹, ADAS-Cog Number Cancellation), working memory (WMS-R Digit Span), and visuospatial functions (clock drawing and copying, ADAS-Cog Figure Savings and Copying). In addition, we assessed measures of clinical functioning (Clinical Dementia Rating Sum of Boxes scale [CDR-SB⁴²], Functional Activities Questionnaire [FAQ⁴³]), neuropsychiatric symptoms (Neuropsychiatric Inventory–Questionnaire [NPI-Q⁴⁴]), and cognitive composite scores (ADAS-Cog13, Mini-Mental State Examination [MMSE⁴⁵], Preclinical Alzheimer Cognitive Composite [PACC-5⁴⁶]). If visual inspection of the data indicated that test score distributions strongly deviated from normality, we applied

pre-normalization using latent process modeling implemented in the "lcm" R package.⁴⁷ Cognitive test scores were z-standardized to participants without manifest cognitive impairment, that is, the CU and SCD groups, and, if needed, inverted so that lower scores represented worse performance across inventories.

2.4 | MRI acquisition

MRI data were collected on 3 Tesla Siemens MRI system, including a T1-weighted, 3D whole-brain magnetization prepared rapid gradient echo sequence (MPRAGE; echo time/repetition time [TE/TR] = 437/2500 ms, inversion time = 1100 ms, 7° flip angle, 1 mm isotropic resolution) and a T2-weighted turbo spin-echo (TSE; TE/TR = 354/3500 ms, 120° flip angle, 0.5 × 0.5 × 1.5 mm resolution) sequence. To optimally visualize MTL subregions, TSE images were oriented orthogonally to the longitudinal axis of the hippocampus and were limited to a slab covering the MTL.⁴⁸

2.5 | MRI processing

Several research questions addressed by this study require the longitudinal assessment of subregional atrophy markers. When performing longitudinal segmentations, processing images individually may introduce unrelated noise. Hence, the current study uses pipelines that minimize and homogenize noise across measurements by using within-subject templates.⁴⁹

MTL subregional volumes were derived using a newly developed longitudinal implementation of the automated segmentation of hippocampal subfields (ASHS^{13,50}) algorithm, using subject-specific templates. This pipeline can be applied to both T1- (T1-ASHS) and T2-weighted images (T2-ASHS). This flexibility is crucial because different structures are best segmented on different image modalities; for example, hippocampal subfields on T2-weighted and the amygdala on T1-weighted images.^{51,52} Technical details of this pipeline are summarized in the [Supplementary Methods](#) and were described in a previous publication from our group.² T2-ASHS was used with the Penn ABC 3T atlas, delineating hippocampal subfields (cornu ammonis [CA] 1–3, dentate gyrus, subiculum) as well as the extrahippocampal MTL cortices (entorhinal cortex, Brodmann area [BA] 35 [approximately corresponding to Braak's transentorhinal cortex⁵⁰], BA36, and parahippocampal cortex).^{20,53} To reduce the number of ROIs, we combined the CA2, CA3, and dentate gyrus labels into a single CA23DG label, as these regions are less affected by early AD-related NFTs.⁵⁴ Hippocampal subfields were only segmented in the anterior hippocampus (combining hippocampal head and body), while its posterior-most portion was segmented as hippocampal tail. T1-ASHS with an updated version of the PMC-T1 atlas was used to generate segmentations of the amygdala.^{19,51} We also conducted standard cross-sectional T2-ASHS segmentation of baseline images to evaluate the comparability of longitudinally derived volumes with those generated using the established T2-ASHS algorithm.

Average cortical thicknesses of the granular retrosplenial cortex (isthmus of the cingulate gyrus), inferior parietal cortex, posterior cingulate cortex, and the precuneus were generated from T1-weighted images using FreeSurfer's longitudinal stream (v7.1.1, Desikan–Killiany atlas, <http://surfer.nmr.mgh.harvard.edu/>).⁴⁹

Gray matter volumes were adjusted for their relationship with total intracranial volume in all CU A β -participants included in DELCODE.⁵⁵ All structural measures were z-standardized to the CU A β - group. Pipeline availabilities are indicated in Figure S2 in supporting information.

2.6 | Data-driven disease staging

A data-driven disease progression model was trained to capture disease progression on a continuous scale, closely following a previous analysis of DELCODE data.^{56,57} Briefly, the model was trained on all available longitudinal CSF A β 42/A β 40 ratios and phosphorylated tau 181 concentrations, as well as PACC-5 and ADAS-Cog13 sum scores. While the previously reported model included entorhinal and hippocampal volume, we retrained an otherwise analogous model in the same sample, this time excluding atrophy markers to avoid circularity in our analyses. Using this model, we estimated a continuous disease stage, expressed in years, for each participant's baseline study visit in reference to the entire DELCODE sample. To simplify interpretation of the arbitrarily scaled disease stages, we adjusted the original values for age, sex, and years of education and applied linear transformation to introduce a clinical reference point by setting the median of the CU A β + group to zero.

2.7 | Statistical analyses

Statistical analyses were performed in R v4.2.2.⁵⁸ The threshold for statistical significance was $P \leq 0.05$. Two-way intraclass correlations tested agreement between baseline volumes from longitudinal and cross-sectional T2-ASHS. We used analysis of covariance (ANCOVA) to test for effects of study site on scaled atrophy markers within each clinical disease stage. ANCOVAs were also used to compare baseline atrophy markers across clinical disease stages. Post hoc comparisons comprised contrasts of all clinical stages against the CU A β - group and contrasts of consecutive clinical stages (e.g., MCI A β + vs. SCD A β +). We investigated whether longitudinal trajectories of atrophy markers differed by clinical stage through linear mixed effects models with participant-level random slopes and intercepts, applying the aforementioned contrasts.

Next, analysis of variance was used to test for differences in data-driven disease stage between consecutive clinical disease stages at baseline. To model atrophy trajectories along data-driven disease stages, we estimated longitudinal stages by adding years since baseline to each individual's estimated baseline stage. These projected stages were used in linear mixed-effects models to predict each atrophy marker. Cubic B-splines ($df = 3$) were used to capture non-linear

mean trajectories, and the first derivatives of the resulting curves were examined to assess slope changes with disease progression.

Finally, we analyzed the longitudinal relationships of regional structure and cognitive measures using bivariate latent growth curve models (LGCMs), implemented in the "OpenMx" R package.^{59,60} Bivariate LGCMs allow for the estimation of change in two longitudinally recorded variables and the relationships thereof. Models were specified and fitted for each pairing of structural and cognitive variables as visualized in Figure S3 in supporting information. An acceptable model fit was defined by a comparative fit index (CFI) > 0.90 and a root mean square error of approximation (RMSEA) < 0.08. Wald tests (critical $Z = 1.96$) were used to ensure sufficient variance in latent intercepts and slopes to test for covariance. Likelihood ratio tests were used to freely estimate covariance parameters of interest, each reflecting different intended uses for structural MRI markers. This included the baseline–baseline (diagnosis and case finding), baseline–slope (prognosis), and slope–slope (disease monitoring) pairwise associations of structural and cognitive variables. We also investigated if these relationships differed among clinical stages (CU A β^- , preclinical AD comprising CU A β^+ and SCD A β^+ , and symptomatic AD comprising MCI A β^+ and DAT A β^+). To this end, multigroup models were estimated in which the parameter of interest was freely estimated within each group, constraining all other parameters to be equal across groups. Group-wise parameters were tested against 0 within each group using likelihood ratio tests.

All analyses controlled for baseline age and sex. Years of education was included as a covariate when predicting cognitive scores. Models including disease time were not corrected for demographics as they were regressed out of this metric.

3 | RESULTS

An overview of participant characteristics is provided in Table 1. Intra-class correlation coefficients of baseline volumes generated using the standard cross-sectional and newly developed longitudinal T2-ASHS pipelines were excellent, supporting their comparability ($n = 272$, mean intra-class correlation = 0.94, $SD = 0.02$; range = 0.90–0.97, all $P_{FDR} < 0.001$; P values were corrected across all eight ROIs; Figure S4 in supporting information). There were no statistically significant effects of site on atrophy markers (Table S1, Figure S5 in supporting information).

3.1 | Baseline assessments reveal atrophy of early Braak regions in preclinical AD with SCD

The first main analysis aimed to identify potential baseline differences of atrophy markers among clinical disease stages using ANCOVAs (Figure 1A,C, see also Tables S2 and S3 in supporting information for details on ANCOVA results and post hoc comparisons, respectively). We applied false discovery rate (FDR) correction to P values for the effect of clinical stage across atrophy markers (13 comparisons in

total), as well as within post hoc comparisons for each atrophy marker (seven comparisons per marker). Atrophy markers from A β -positive groups were first compared to those of CU A β^- participants and there were no significant differences for the CU A β^+ group. Meanwhile, volumes of the amygdala ($b = -0.70$, $t = -3.75$, $P_{FDR} < .001$), the entorhinal cortex ($b = -0.44$, $t = -2.75$, $P_{FDR} = 0.015$), and all hippocampal ROIs (all $b \leq -0.36$, $t \leq -2.14$, $P_{FDR} \leq 0.047$) were significantly reduced in the SCD A β^+ group. The same regional volumes were reduced in MCI A β^+ participants, though these effects were numerically stronger than in the SCD A β^+ group (all $b \leq -0.59$, $t \leq -2.97$, $P_{FDR} \leq 0.011$). In addition, MCI A β^+ participants exhibited significantly reduced cortical thickness in the precuneus ($b = -0.62$, $t = -2.53$, $P_{FDR} = 0.028$) and in the inferior parietal cortex ($b = -0.51$, $t = -2.45$, $P_{FDR} = 0.035$). All structural markers included in the post hoc analysis were significantly reduced in DAT A β^+ patients (all $b \leq -0.80$, $t \leq -3.18$, $P_{FDR} \leq 0.011$). Analyzing further contrasts representing consecutive clinical stages, we observed significant differences across comparisons (SCD A β^+ vs. CU A β^+ , MCI A β^+ vs. SCD A β^+ , DAT A β^+ vs. MCI A β^+). These were mainly focused on the amygdala, hippocampal ROIs, the precuneus, and the inferior parietal cortex.

Clinical disease stage had a non-significant effect on BA36 and parahippocampal cortex volume, as well as on posterior cingulate cortical thickness. These models were not passed to post hoc analysis.

3.2 | Longitudinal MRI reveals accelerated atrophy in preclinical AD

Incorporating data from follow-up MRI assessments, we tested if clinical disease stages differed in their associated longitudinal trajectories of atrophy markers using linear mixed effect models. Random slopes showed insufficient variance when predicting posterior cingulate cortical thickness and were therefore omitted from this specific model. Estimated slopes (i.e., annual rates of change of atrophy markers) are displayed by clinical disease stage in Figure 1B and Figure 1D summarizes the results of their pairwise comparisons (see also Tables S4–6 in supporting information; FDR correction was performed among all seven planned contrasts per atrophy marker). In CU A β^- participants, a significant decline was observed across markers except for entorhinal volume and posterior cingulate cortical thickness. Decline was further amplified in several regions within the different A β -positive groups. While no significant effects were observed for the CU A β^+ group in the cross-sectional analysis, there was an accelerated volumetric decline over time in the amygdala ($b = -0.07$, $t = -2.99$, $\eta^2_{\text{partial}} = 0.03$, $P_{FDR} = 0.007$), entorhinal cortex ($b = -0.07$, $t = -3.01$, $\eta^2_{\text{partial}} = 0.04$, $P_{FDR} = 0.007$), and BA35 ($b = -0.07$, $t = -2.73$, $\eta^2_{\text{partial}} = 0.03$, $P_{FDR} = 0.016$). The SCD A β^+ group exhibited an even more pronounced decline relative to the CU A β^- group, particularly in parietal subregions (precuneus: $b = -0.10$, $t = -3.10$, $\eta^2_{\text{partial}} = 0.04$, $P_{FDR} = 0.005$; inferior parietal cortex: $b = -0.15$, $t = -3.89$, $\eta^2_{\text{partial}} = 0.06$, $P_{FDR} < 0.001$). Additional regions within the medial temporal lobe (amygdala, subiculum, entorhinal cortex, and BA36) also showed significantly faster decline in the SCD A β^+ group.

TABLE 1 Characteristics of the analyzed sample.

Diagnostic group	Missing	CU A β -	CU A β +	SCD A β +	MCI A β +	DAT A β +	Total
	n (%)	n = 165	n = 30	n = 78	n = 51	n = 39	N = 363
NIA-AA clinical disease stage		n.a.	1	2	3	4	
Baseline age, years	0 (0)	68.14 (5.05)	71.23 (6.51)	73.07 (5.55)	73.75 (4.82)	74.74 (6.58)	70.95 (6.04)
Sex, female	n.a.	106 (64.24%)	12 (40.00%)	29 (37.18%)	27 (52.94%)	19 (48.72%)	193 (53.17%)
Education level, years	n.a.	14.55 (2.78)	14.27 (3.14)	14.50 (2.98)	14.08 (3.32)	12.97 (2.86)	14.28 (2.96)
Baseline data-driven disease stage, years	33 (9.09%)	-3.61 (3.26)	-0.92 (3.35)	-0.27 (2.63)	2.32 (2.16)	5.34 (2.31)	-0.93 (4.17)
Number of assessments	n.a.	3.56 (0.70)	3.67 (0.66)	3.17 (0.83)	3.18 (0.87)	2.72 (0.76)	3.34 (0.81)
Source of A β status, probabilistic model ^a	n	79 (47.88%)	8 (26.67%)	33 (42.31%)	11 (21.57%)	8 (20.51%)	139 (38.29%)
Pipeline availability							
T1-ASHS	n.a.	148 (89.70%)	27 (90.00%)	76 (97.44%)	50 (98.04%)	37 (94.87%)	338 (93.11%)
T2-ASHS	n.a.	151 (91.52%)	28 (93.33%)	61 (78.21%)	32 (62.75%)	18 (46.15%)	290 (79.89%)
FreeSurfer	n.a.	165 (100.00%)	30 (100.00%)	78 (100.00%)	51 (100.00%)	39 (100.00%)	363 (100.00%)
Cognitive test scores ^b							
PACC-5	37 (10.19%)	0.23 (0.54)	-0.16 (0.74)	-0.36 (0.71)	-1.28 (0.72)	-3.52 (1.35)	-0.30 (1.11)
MMSE	1 (0.28%)	29.57 (0.71)	29.20 (1.06)	29.17 (1.04)	27.84 (1.60)	23.51 (3.36)	28.56 (2.34)
ADAS-Cog13	9 (2.48%)	5.34 (3.01)	6.92 (4.22)	8.19 (3.93)	16.50 (6.63)	30.22 (7.66)	10.08 (8.86)
CDR-SB	7 (1.93%)	0.05 (0.21)	0.26 (0.85)	0.51 (0.76)	1.36 (0.96)	4.29 (1.95)	0.80 (1.54)

Abbreviations: A β , amyloid beta; ADAS-Cog13, Alzheimer's Disease Assessment Scale-Cognitive subscale sum score; ASHS, automated segmentation of hippocampal subfields; CDR-SB, Clinical Dementia Rating Sum of Boxes; CSF, cerebrospinal fluid; CU, cognitively unimpaired; DAT, dementia of the Alzheimer's disease type; MCI, mild cognitive impairment; MMSE, Mini-Mental State Examination; n.a., not applicable; NIA-AA, National Institute on Aging-Alzheimer's Association; PACC-5, Preclinical Alzheimer Cognitive Composite; SCD, subjective cognitive decline.

^aCorresponds to the number of participants with missing CSF data. A β status was directly determined from CSF A β 42/A β 40 ratios where available.

^bRaw scores are displayed.

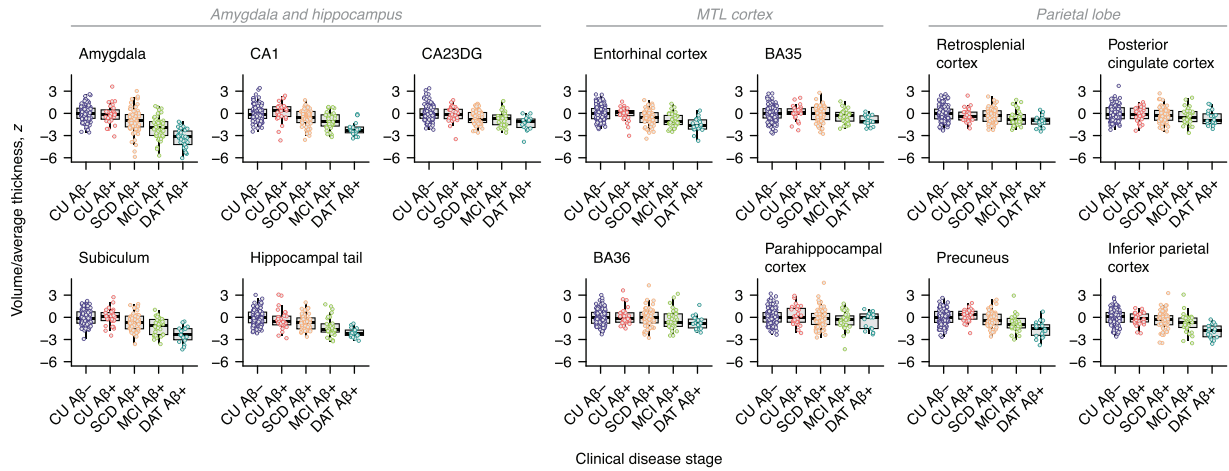
Comparing SCD A β + and CU A β + participants, the only significant difference was in the rate of thinning in the inferior parietal cortex ($b = -0.15$, $t = -2.74$, $\eta^2_{\text{partial}} = 0.03$, $P_{\text{FDR}} = 0.009$). A similar pattern to that observed in SCD A β + individuals was found in the MCI A β + group, with an additional acceleration of thinning in the retrosplenial cortex ($b = -0.06$, $t = -2.67$, $\eta^2_{\text{partial}} = 0.03$, $P_{\text{FDR}} = 0.027$). In DAT A β + participants, nearly all structures, except for the hippocampal tail and CA1, showed accelerated atrophy. Compared to MCI A β + participants, structural decline in DAT A β + individuals progressed more rapidly in extrahippocampal and parietal regions, while hippocampal subfields and the amygdala showed no significant differences.

3.3 | Data-driven disease staging offers detailed insights into subregional atrophy progression

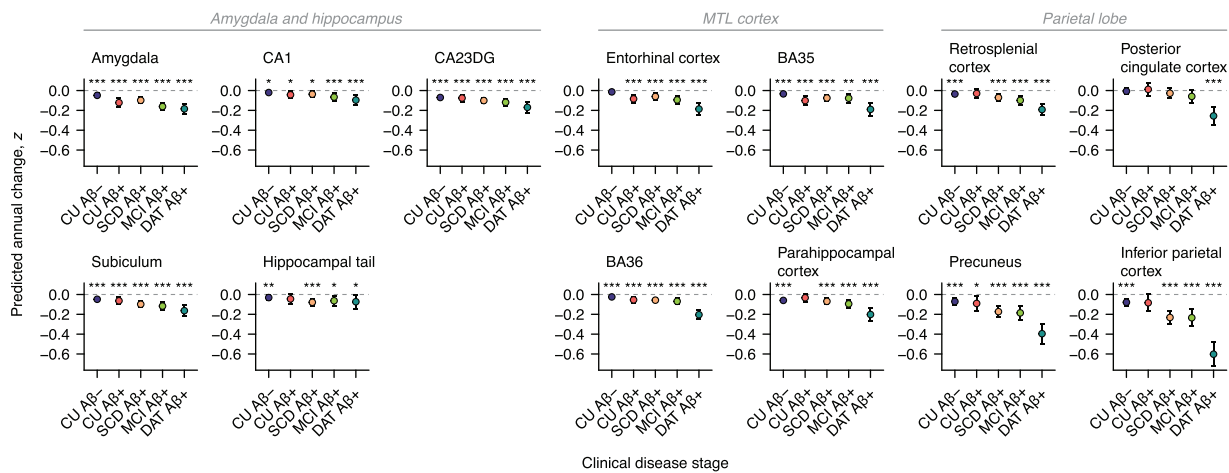
Independent of discrete clinical staging, we next analyzed the evolution of regional atrophy markers in relation to continuous, data-driven disease stages. The disease progression model used to derive

individual stages is illustrated in Figure S6 in supporting information. We found that baseline stage increased with clinical progression (i.e., with each successive clinical disease stage), except that there was no significant difference between CU A β + and SCD A β + participants ($b = 0.65$, $P_{\text{FDR}} = 0.308$; otherwise range [b]: 2.58–3.02, all $P_{\text{FDR}} < 0.001$; Figure 2A, four FDR-corrected comparisons). Linear mixed effects models with B-splines were used to capture non-linearity in the longitudinal trajectories of atrophy markers with data-driven disease stage. Figure 2B–D show the fitted slopes and their first derivatives. As expected in a sample of older adults, progressive atrophy (i.e., negative first derivatives) was evident already at early stages below the CU A β + group median, which was set to be zero. Within the MTL, the amygdala exhibited the most pronounced decline across data-driven disease stages. Interestingly, the first derivatives of the fitted curves indicate that atrophy rates of hippocampal subfields and the amygdala stabilized toward later stages. Atrophy rates in the MTL cortex and parietal lobe were low in early stages but accelerated in stages primarily observed in symptomatic individuals, with particularly sharp increases in the precuneus and inferior parietal cortex.

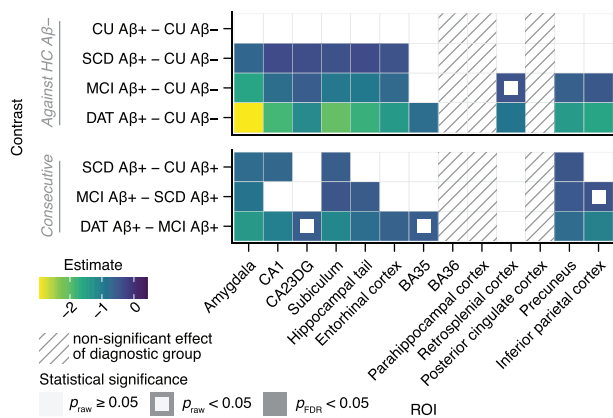
(A) Baseline subregional MRI markers



(B) Longitudinal trajectories of subregional MRI markers



(C) Summary of pairwise contrasts of baseline subregional MRI markers



(D) Summary of pairwise contrasts of subregional MRI marker slopes

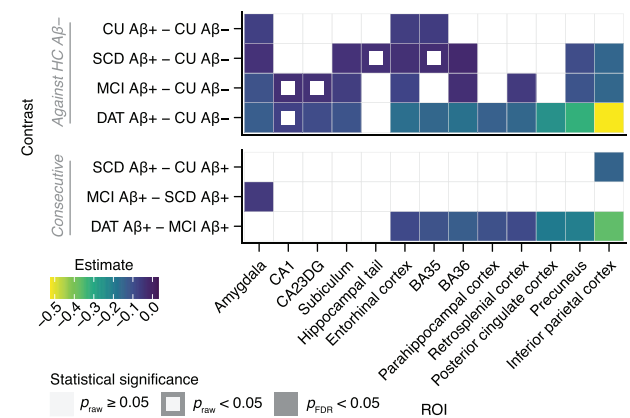


FIGURE 1 Baseline and longitudinal MTL and parietal subregional atrophy markers across the clinical AD continuum. A, Boxplot diagrams of baseline gray matter volumes and average cortical thicknesses across ROIs and clinical disease stages, grouped by meta-region. B, Annual change of atrophy markers across ROIs and clinical disease stages, grouped by meta-region. The shown slopes were estimated from linear mixed effects models. Error bars denote 95% confidence intervals. Asterisks highlight significant slopes, that is, significant change over time. C, Matrix displaying estimates from analysis of covariance post hoc group comparisons of baseline atrophy markers. The striped pattern indicates markers with non-significant main effects of clinical disease stage (not passed to post hoc tests). D, Estimates from pairwise stage comparisons of longitudinal atrophy marker slopes. **P* < 0.05. ***P* < 0.01. ****P* < 0.001. Aβ, amyloid beta; BA, Brodmann area; CA, cornu ammonis; CA23DG, cornu ammonis 2, 3, and dentate gyrus; CU, cognitively unimpaired; DAT, dementia of the Alzheimer's disease type; FDR, false discovery rate; IPC, inferior parietal cortex; MCI, mild cognitive impairment; MRI, magnetic resonance imaging; MTL, medial temporal lobe; ROI, region of interest; SCD, subjective cognitive decline; SUB, subiculum.

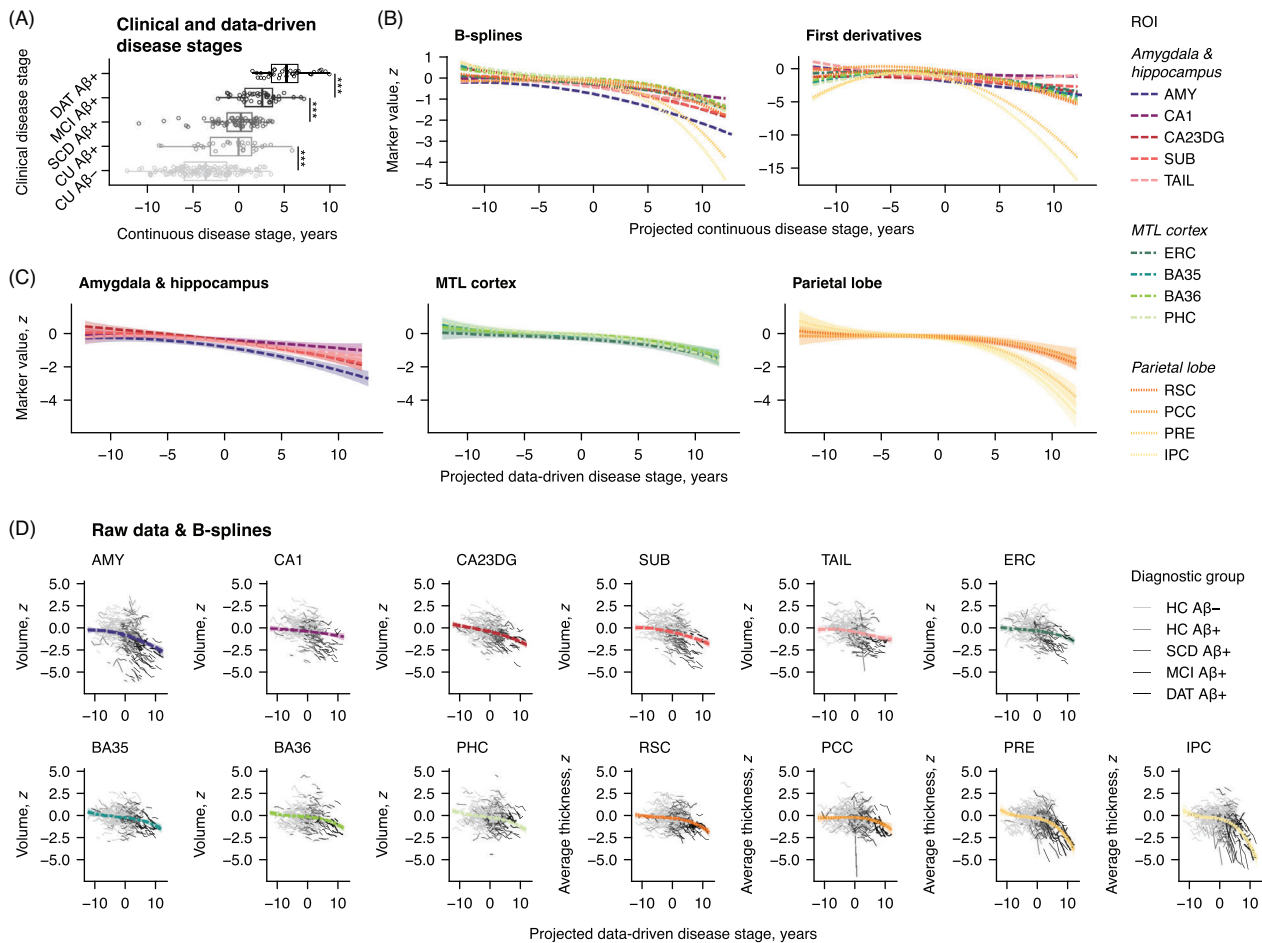


FIGURE 2 Non-linear changes in MTL and parietal subregional atrophy markers along continuous, data-driven disease stages. A, Boxplot diagrams of baseline data-driven disease stages by clinical disease stage, centered to the median of the CU Aβ+ group. B, Cubic B-splines and their first derivatives were used to assess the development of atrophy markers across data-driven disease stages. The estimated trajectories with bootstrapped confidence intervals are also shown in (C), where they are clustered by meta-region. D, For each atrophy marker, the predicted curves are plotted along with the observed participant-level trajectories. *** $P < 0.001$. Aβ, amyloid beta; AMY, amygdala; BA, Brodmann area; CA, cornu ammonis; CA23DG, cornu ammonis 2, 3, and dentate gyrus; CU, cognitively unimpaired; DAT, dementia of the Alzheimer's disease type; ERC, entorhinal cortex; HC, healthy control; IPC, inferior parietal cortex; MCI, mild cognitive impairment; MTL, medial temporal lobe; PCC, posterior cingulate cortex; PHC, parahippocampal cortex; PRE, precuneus; ROI, region of interest; RSC, retrosplenial cortex; SCD, subjective cognitive decline; SUB, subiculum; TAIL, hippocampal tail.

3.4 | Structural and cognitive changes covary uniquely at different clinical disease stages

Finally, we analyzed longitudinal measures of regional brain structure and cognition to identify their potentially disease stage-specific couplings. To this end, bivariate LGCMs were fitted both in the whole sample and in subsamples representing different clinical disease stages. Due to their non-normal distributions, ADAS-Cog Delayed Word Recall, ADAS-Cog Figure Copying, ADAS-Cog13, CDR-SB, Clock Copying, Clock Drawing, FAQ, MMSE, and NPI-Q scores were pre-normalized using latent process modelling (Supplementary Results, Figures S7 and S8 in supporting information). Most models showed adequate fit and variance structures. However, FCSRT Naming SDMT, TMT B-A, Flanker, WMS-R Digit Span, Clock Copying, and NPI-Q scores, as well as posterior cingulate cortical thicknesses, had insufficient slope variances and are therefore not reported. Additional details

on model fit are reported in the Supplementary Results and Figures S9 and S10 in supporting information. The estimates for all covariance parameters of interest are visualized in Figure 3. We applied FDR correction across all statistical tests performed in each analyzed group (3 parameters of interest \times 14 test scores \times 12 atrophy markers = 504 comparisons per group).

As expected, all significant covariance estimates were positive, indicating that structural decline was linked to worsening cognition. However, no consistent covariance pattern emerged across clinical disease stages, with each group showing distinct associations between subregional atrophy markers and individual test scores.

Clinical disease stage-specific covariance matrices revealed that significant estimates were more frequent and descriptively higher in the symptomatic group (MCI Aβ+ and DAT Aβ+) compared to the CU Aβ- and preclinical (CU Aβ+ and SCD Aβ+) groups, reflecting stronger structure-cognition coupling at later clinical stages.

is considered longitudinally instead of cross-sectionally, significant covariances are increasingly focused on the structures in the MTL cortices and the parietal lobe. This pattern occurred across groups but was most pronounced in symptomatic participants.

In preclinical stages, the FCSRT-96 and PACC-5 demonstrated the most consistent associations across covariance parameters and regions, with the FCSRT-96 showing more widespread and significant structural correlates than other episodic memory measures. Significant slope–slope associations were also observed in models including the ADAS-Cog13. Functional decline was linked to thinning in the precuneus and inferior parietal cortex, while sign associations with language, executive functioning, or visuospatial scores were rare.

In symptomatic groups, cross-sectional associations between structural and cognitive measures were notably broad, with only parahippocampal cortex and BA36 volumes showing limited associations. Baseline–slope relationships were primarily centered on MTL structures across cognitive domains, while slope–slope covariances focused on the MTL cortex and parietal lobe, encompassing cognitive domains beyond episodic memory and cognitive composites.

4 | DISCUSSION

This study provides a detailed characterization of MTL and parietal subregional atrophy along the AD continuum, revealing abnormally accelerated atrophy in MTL subregions already during preclinical disease stages. Notably, the presence of SCD in preclinical AD was associated with a widespread pattern of manifest MTL atrophy. Independent of clinical staging, the examined atrophy markers uniquely developed within a data-driven disease staging framework, with amygdalar volume showing the earliest decline. Finally, we found that associations between atrophy markers and neuropsychological test scores varied by clinical disease stage and intended use.

Overall, the atrophy patterns identified using both clinical and data-driven AD staging mirrored the Braak staging framework of NFT progression, with the MTL being affected prior to the parietal cortex.^{10,14} Our results thus align with previous findings on the colocalization of NFTs and atrophy, as well as with studies on MRI signatures of early AD, further supporting the use of structural MRI as a biomarker for AD-related neurodegeneration.^{3,9–11,24,25,61} The additional insights generated by our study as well as its limitations are discussed in the following.

4.1 | Accelerated atrophy is detectable in preclinical AD

Our study underscores the value of subregional atrophy assessments, particularly when targeting early disease stages. For instance, our longitudinal data suggest that in preclinical AD, atrophy spares the posterior MTL (parahippocampal cortex, hippocampal tail), while anterior structures deteriorate earlier. Another example, now at the level of anatomical substructures, is given by our longitudinal analyses across clinical disease stages: here, abnormal atrophy first emerged in the

anterior MTL cortices (entorhinal cortex, BA35, BA36) and amygdala at clinical stage 1 (CU A β +), before hippocampal subfields showed accelerated atrophy at clinical stage 2 (SCD A β +). While the MTL cortices are known as early hotspots of AD-related NFTs and atrophy, the amygdala has been underrepresented in relevant research.⁶² Alongside our findings, only few studies suggest that amygdalar volume may be more sensitive to early AD than the commonly used hippocampal volume.^{63,64} Interestingly, hippocampal and amygdalar atrophy rates stabilized toward later data-driven disease stages and did not differ between DAT A β + and MCI A β + participants, indicating reduced sensitivity in manifest AD.

Crucially, our study reinforces the relevance of distinguishing clinical stages 1 (CU A β +) and 2 (SCD A β +) as manifest MTL atrophy as well as accelerated atrophy rates of the inferior parietal cortex and the precuneus were only observed in the SCD A β + but not the CU A β + group. These findings align with studies linking SCD in preclinical AD to elevated biomarkers of AD proteinopathy and an elevated risk of progression to cognitive impairment.^{32,65–68}

4.2 | Cross-sectional and longitudinal atrophy markers provide distinct insights into disease progression

Our findings show that cross-sectional and longitudinal atrophy markers provide distinct, yet complementary, insights into accumulated and ongoing regional atrophy, respectively. For example, in SCD A β + participants, precuneus and inferior parietal cortical thickness appeared normal cross-sectionally but showed accelerated atrophy over time in longitudinal assessments. Meanwhile, significant accumulated atrophy of these regions was evident in the subsequent MCI A β + stage. While most findings align with this pattern of accelerated decline (ongoing atrophy) preceding cross-sectional reductions (accumulated atrophy), some results deviate from this trend. For example, our cross-sectional analyses identified reduced volumes in hippocampal subfield CA1 at the SCD A β + stage while no clinical disease stage was linked with longitudinally accelerated CA1 atrophy rates. Importantly, we believe it is not paradoxical that atrophy rates in BA35, BA36, and the parahippocampal cortex accelerate during preclinical stages despite the absence of significant cross-sectional abnormalities before the DAT A β + stage. This can be attributed to the high inter-individual macro-anatomical differences in these structures, adding variance to absolute volumetric measures unrelated to neurodegeneration.⁵⁰ Longitudinal within-subject volumetric analyses account for this variance, making them better suited to capture subtle atrophy in these structures.⁴⁹

4.3 | Brain structure and cognition show disease stage-specific couplings

Covariance patterns between MRI markers and neuropsychological test scores consistently linked atrophy to cognitive decline, though associations varied by disease stage and covariance parameter.

Building on prior reports of varying sensitivities of cognitive inventories with AD progression, we found that relationships of subregional atrophy markers and neuropsychological test scores varied by clinical disease stage.^{69,70} Overall, we observed stronger and more significant atrophy–cognition associations in symptomatic compared to preclinical AD participants. This finding likely reflects greater intra- and interindividual variability in atrophy and cognitive performance in symptomatic AD. It also suggests that early cognitive decline may be more driven by factors beyond atrophy, such as functional alterations or synaptic dysfunction.

The analyzed covariance parameters of atrophy markers and neuropsychological test scores represent three distinct uses for biomarkers: baseline–baseline covariances are relevant for diagnostic and case-finding purposes, baseline–slope covariances reflect the prognostic value of an atrophy marker, and slope–slope covariances indicate an atrophy marker's suitability for monitoring disease progression. Generally, we observed the strongest covariances among slope–slope associations, suggesting that regional brain structure and neuropsychological test scores are most closely linked in their longitudinal changes, aligning with previous studies.^{71–73} The complex interplay of disease stage and intended use can be illustrated by the associations of CA1 volume and FCSRT-96 scores. The two variables covaried at baseline in both preclinical and symptomatic AD, with stronger covariance in the latter. Regarding prognosis, lower baseline CA1 volume predicted FCSRT-96 decline only in symptomatic AD. Meanwhile, longitudinal changes in both variables covaried significantly in both groups, with stronger coupling in preclinical AD. These results suggest that CA1 atrophy related to FCSRT-96 performance emerges mainly during preclinical AD. In symptomatic AD, accumulated CA1 atrophy predicts further decline. However, this later decline appears to be primarily coupled with ongoing atrophy in other MTL subregions, including the amygdala and subiculum.

Our results capture established anatomo–clinical relationships and highlight their dynamic fluctuations with disease progression. For example, cognitive decline was linked to emerging parietal atrophy more strongly in symptomatic than in preclinical AD, aligning with reports of increasing parietal NFT pathology as the disease progresses.^{10,74} In addition, the significant slope–slope relationships of FCSRT-96 and verbal fluency scores with MTL volumes in preclinical AD complement the established role of the MTL in episodic and semantic memory.^{61,75,76} Interestingly, the FCSRT-96 stood out for its consistent associations with MTL structure, aligning with prior studies linking it to early tau burden in preclinical AD and highlighting its value among PACC-5 subtests for distinguishing preclinical AD from healthy aging over time.^{46,77} In contrast, many episodic memory measures (e.g., ADAS-Cog Delayed Word Recall, WMS-IV Logical Memory Delayed Recall), showed weak associations with MTL structure. Among cognitive composites, the MMSE was largely unrelated to the analyzed atrophy markers in preclinical AD, while significant associations were found for the ADAS-Cog13 and PACC-5. These composites were designed to specifically capture AD-related cognitive decline and emphasize episodic memory, which may explain their relatively early associations with MTL atrophy.

While focusing on AD, our study also provides insights into brain structure–cognition relationships in healthy aging (CU A β -). Contrasting earlier studies, we found no widespread longitudinal relationships between MTL structure and cognition, particularly episodic memory.⁷⁸ This may reflect a lag between atrophy and cognitive decline, as indicated by broader associations of baseline MTL structure with future cognitive decline.

4.4 | Limitations

Our results should be interpreted given the following limitations. First, our study is strongly motivated by an assumed local association between NFT pathology and atrophy. However, due to lacking regional NFT markers, we were unable to directly evaluate this assumption. Varying regional vulnerability, comorbid pathologies (e.g., TDP-43, α -synuclein), and distant NFT effects may have contributed to our findings.⁹ Future studies should investigate the pathobiological processes underlying our results, such as through the use of biomarkers and biological disease staging. Second, our analyses of structure–cognition relationships cannot answer questions of possible mediating or moderating mechanisms, including functional alterations and neuroinflammatory responses. Third, disparities in sample sizes across diagnostic groups may have led to underpowered analyses, emphasizing the importance of the reported effect sizes. Finally, future studies should aim to replicate our findings in independent, more diverse cohorts that include data on race and ethnicity, which were not collected here due to German data protection laws.

5 | CONCLUSION

Our study offers detailed insights into the dynamics of anatomically detailed atrophy markers within the MTL and parietal lobe across the AD continuum. We show that abnormalities on structural MRI do not necessarily appear imminent to cognitive impairment onset. Instead, accelerated volumetric decline in the entorhinal cortex, BA35, and the amygdala was observed already in preclinical AD. However, these markers appear less effective during symptomatic stages, when disease progression leads to more pronounced atrophy in hippocampal and parietal subregions. We demonstrate that atrophy–cognition associations are disease stage–specific and vary by the intended use of an atrophy marker. Crucially, these associations were highly heterogeneous even within broader brain regions and cognitive domains, such as among MTL subregions and episodic memory tests. These results indicate that achieving optimal use of structural MRI for atrophy assessment—whether in research, clinical practice, or intervention trials—requires markers that are tailored to context-specific factors, including the intended use and the targeted disease stage.

AFFILIATIONS

¹German Center for Neurodegenerative Diseases (DZNE), Magdeburg, Germany

²Cognition and Brain Sciences Unit, University of Cambridge, Cambridge, UK

³Department of Psychology, University of Cambridge, Cambridge, UK

⁴Institute of Cognitive Neurology and Dementia Research (IKND), Otto-von-Guericke University, Magdeburg, Germany

⁵Clinical Memory Research Unit, Department of Clinical Sciences Malmö, Lund University, Lund, Sweden

⁶Diagnostic Radiology, Department of Clinical Sciences Lund, Lund University, Lund, Sweden

⁷Penn Image Computing and Science Laboratory (PICSL), Department of Radiology, University of Pennsylvania, Philadelphia, Pennsylvania, USA

⁸German Center for Neurodegenerative Diseases (DZNE), Bonn, Germany

⁹Department for Cognitive Disorders and Old Age Psychiatry, University Hospital Bonn, Bonn, Germany

¹⁰Department of Psychiatry and Psychotherapy, University Medical Center Goettingen, Goettingen, Germany

¹¹Excellence Cluster on Cellular Stress Responses in Aging-Associated Diseases (CECAD), Cologne, Germany

¹²Division of Neurogenetics and Molecular Psychiatry, Department of Psychiatry and Psychotherapy, University of Cologne, Cologne, Germany

¹³Department of Psychiatry & Glenn Biggs Institute for Alzheimer's and Neurodegenerative Diseases, San Antonio, Texas, USA

¹⁴German Center for Neurodegenerative Diseases (DZNE), Tübingen, Germany

¹⁵Division of Translational Genomics of Neurodegenerative Diseases, Hertie Institute for Clinical Brain Research, Tübingen, Germany

¹⁶Center for Neurology, University of Tübingen, Tübingen, Germany

¹⁷German Center for Neurodegenerative Diseases (DZNE), Goettingen, Germany

¹⁸Leibniz Institute for Neurobiology, Magdeburg, Germany

¹⁹Institute for Medical Biometry, Informatics and Epidemiology, University Hospital Bonn, Bonn, Germany

²⁰Berlin Center for Advanced Neuroimaging, Charité – Universitätsmedizin Berlin, Berlin, Germany

²¹MR-Research in Neurosciences, Department of Cognitive Neurology, University Medical Center Goettingen, Goettingen, Germany

²²Department for Biomedical Magnetic Resonance, University of Tübingen, Tübingen, Germany

²³German Center for Neurodegenerative Diseases (DZNE), Munich, Germany

²⁴Institute for Stroke and Dementia Research (ISD), University Hospital, LMU Munich, Munich, Germany

²⁵German Center for Neurodegenerative Diseases (DZNE), Berlin, Germany

²⁶Department of Psychiatry and Neurosciences, Charité – Universitätsmedizin Berlin, Berlin, Germany

²⁷ECRC Experimental and Clinical Research Center, Charité – Universitätsmedizin Berlin, Berlin, Germany

²⁸Institute of Psychiatry and Psychotherapy, Charité – Universitätsmedizin Berlin, Berlin, Germany

²⁹Department of Psychiatry, University of Cologne, Cologne, Germany

³⁰Department of Psychiatry and Psychotherapy, University Clinic Magdeburg, Otto-von-Guericke University, Magdeburg, Germany

³¹Department of Psychiatry and Psychotherapy, University Hospital, LMU Munich, Munich, Germany

³²Sheffield Institute for Translational Neuroscience (SITraN), University of Sheffield, Sheffield, UK

³³Department of Neuroradiology, University Hospital, LMU Munich, Munich, Germany

³⁴German Center for Neurodegenerative Diseases (DZNE), Rostock, Germany

³⁵Department of Psychosomatic Medicine, Rostock University Medical Center, Rostock, Germany

³⁶Department of Psychiatry and Psychotherapy, University of Tübingen, Tübingen, Germany

³⁷Department of Neurology, University Hospital Bonn, Bonn, Germany

³⁸University of Edinburgh and UK DRI, Edinburgh, UK

³⁹Department of Psychiatry and Psychotherapy, School of Medicine and Health, Technical University of Munich, Munich, Germany

⁴⁰German Center for Mental Health (DZPG), Munich, Germany

⁴¹Neurosciences and Signaling Group, Institute of Biomedicine (iBiMED), Department of Medical Sciences, University of Aveiro, Aveiro, Portugal

⁴²Munich Cluster for Systems Neurology (SyNergy), Munich, Germany

⁴³Ageing Epidemiology Research Unit (AGE), School of Public Health, Imperial College London, London, UK

⁴⁴Section for Dementia Research, Hertie Institute for Clinical Brain Research, Tübingen, Germany

⁴⁵Center for Behavioral Brain Sciences (CBBS), Otto-von-Guericke University, Magdeburg, Germany

ACKNOWLEDGMENTS

We thank Sarah Kriener and Merle Hinz for their support in preparing the MTL subregional segmentations, as well as Anke Jahn-Brodmann for her expert technical assistance. DELCODE is funded by Clinical Research, German Center for Neurodegenerative Disorders. H.M.G. is supported by a BrightFocus Foundation Postdoctoral Fellowship, an Add-on Fellowship in Interdisciplinary Life Science from the Joachim Herz Foundation, an Innovative Minds Grant from the DZNE Foundation, and by St John's College, University of Cambridge. L.E.M.W. was supported by MultiPark, a strategic research area at Lund University and National Institute of Health grant R01-AG070592. J.W. was funded by Federal Ministry of Education and Research (BMBF) grant numbers 13GW0479B. This work was supported by the Deutsche Forschungsgemeinschaft (DFG, German Research Foundation; project ID 425899996—SFB 1436.

CONFLICT OF INTEREST STATEMENT

J.W. has been an honorary speaker for Beeijing Yibai Science and Technology Ltd, Eisai, Gloryren, Janssen, Pfizer, Med Update GmbH, Roche, Lilly, Roche Pharma; has been a member of the advisory boards of Abbott, Biogen, Boehringer Ingelheim, Lilly, Immunogenetics, MSD Sharp-Dohme, Noselab, Roboscreen, and Roche Pharma; and receives fees as a consultant for Immunogenetics, Noselab, and Roboscreen. J.W. holds the following patents: PCT/EP 2011 001724 and PCT/EP 2015 052945. All other authors report no conflicts of interest relevant to this work. Author disclosures are available in the [supporting information](#).

CONSENT STATEMENT

All participants provided their written informed consent to participate in the study in accordance with the Declaration of Helsinki. The local institutional review boards at all participating study sites approved the study protocol.

REFERENCES

- Jack CR Jr, Andrews JS, Beach TG, et al. Revised criteria for diagnosis and staging of Alzheimer's disease: Alzheimer's Association Workgroup. *Alzheimers Dement*. 2024;20(8):5143-5169. doi:10.1002/alz.13859
- Baumeister H, Vogel JW, Insel PS, et al. A generalizable data-driven model of atrophy heterogeneity and progression in memory clinic settings. *Brain*. 2024;147(7):2400-2413. doi:10.1093/brain/awae118
- Bejanin A, Schonhaut DR, Joie RL, et al. Tau pathology and neurodegeneration contribute to cognitive impairment in Alzheimer's disease. *Brain*. 2017;140(12):3286-3300. doi:10.1093/brain/awx243
- Ossenkoppele R, Hansson O. Towards clinical application of tau PET tracers for diagnosing dementia due to Alzheimer's disease. *Alzheimers Dement*. 2021;17(12):1998-2008. doi:10.1002/alz.12356
- Ossenkoppele R, Smith R, Mattsson-Carlgen N, et al. Accuracy of tau positron emission tomography as a prognostic marker in preclinical and prodromal Alzheimer disease: a head-to-head comparison against amyloid positron emission tomography and magnetic resonance imaging. *JAMA Neurol*. 2021;78(8):961-971. doi:10.1001/jamaneurol.2021.1858
- Palmqvist S, Insel PS, Stomrud E, et al. Cerebrospinal fluid and plasma biomarker trajectories with increasing amyloid deposition in Alzheimer's disease. *EMBO Mol Med*. 2019;11(12):EMMM201911170. doi:10.15252/emmm.201911170
- Raffi MS, Aisen PS. Detection and treatment of Alzheimer's disease in its preclinical stage. *Nat Aging*. 2023;3(5):520-531. doi:10.1038/s43587-023-00410-4
- Hansson O. Biomarkers for neurodegenerative diseases. *Nat Med*. 2021;27(6):1-10. doi:10.1038/s41591-021-01382-x
- Iaccarino L, Tammewar G, Ayakta N, et al. Local and distant relationships between amyloid, tau and neurodegeneration in Alzheimer's disease. *NeuroImage: Clin*. 2018;17:452-464. doi:10.1016/j.nicl.2017.09.016
- Berron D, Vogel JW, Insel PS, et al. Early stages of tau pathology and its associations with functional connectivity, atrophy and memory. *Brain*. 2021;144(114):2771-2783. doi:10.1093/brain/awab114
- La Joie R, Visani AV, Baker SL, et al. Prospective longitudinal atrophy in Alzheimer's disease correlates with the intensity and topography of baseline tau-PET. *Sci Transl Med*. 2020;12(524):eaau5732. doi:10.1126/scitranslmed.aau5732
- Van Hoesen GW. Anatomy of the medial temporal lobe. *Magn Reson Imaging*. 1995;13(8):1047-1055. doi:10.1016/0730-725x(95)02012-i
- Ding SL, Hoesen GW. Borders, extent, and topography of human perirhinal cortex as revealed using multiple modern neuroanatomical and pathological markers. *Hum Brain Mapp*. 2010;31(9):1359-1379. doi:10.1002/hbm.20940
- Braak H, Braak E. Neuropathological staging of Alzheimer-related changes. *Acta Neuropathol*. 1991;82(4):239-259. doi:10.1007/bf00308809
- Lace G, Savva GM, Forster G, et al. Hippocampal tau pathology is related to neuroanatomical connections: an ageing population-based study. *Brain*. 2009;132(5):1324-1334. doi:10.1093/brain/awp059
- Wolk DA, Das SR, Mueller SG, Weiner MW, Yushkevich PA; Alzheimer's Disease Neuroimaging Initiative. Medial temporal lobe subregional morphometry using high resolution MRI in Alzheimer's disease. *Neurobiol Aging*. 2017;49:204-213. doi:10.1016/j.neurobiolaging.2016.09.011
- Chauveau L, Kuhn E, Palix C, et al. Medial temporal lobe subregional atrophy in aging and Alzheimer's disease: a longitudinal study. *Front Aging Neurosci*. 2021;13:750154. doi:10.3389/fnagi.2021.750154
- Xie L, Wisse LEM, Das SR, et al. Longitudinal atrophy in early Braak regions in preclinical Alzheimer's disease. *Hum Brain Mapp*. 2020;41(16):4704-4717. doi:10.1002/hbm.25151
- Xie L, Wisse LEM, Pluta J, et al. Automated segmentation of medial temporal lobe subregions on in vivo T1-weighted MRI in early stages of Alzheimer's disease. *Hum Brain Mapp*. 2019;40(12):3431-3451. doi:10.1002/hbm.24607
- Yushkevich PA, Pluta JB, Wang H, et al. Automated volumetry and regional thickness analysis of hippocampal subfields and medial temporal cortical structures in mild cognitive impairment. *Hum Brain Mapp*. 2015;36(1):258-287. doi:10.1002/hbm.22627
- Xie L, Das SR, Wisse LEM, et al. Early tau burden correlates with higher rate of atrophy in transentorhinal cortex. *J Alzheimers Dis*. 2018;62(1):85-92. doi:10.3233/jad-170945
- de Flores R, Wisse LEM, Das SR, et al. Contribution of mixed pathology to medial temporal lobe atrophy in Alzheimer's disease. *Alzheimers Dementia*. 2020;16(6):843-852. doi:10.1002/alz.12079
- Das SR, Xie L, Wisse LEM, et al. Longitudinal and cross-sectional structural magnetic resonance imaging correlates of AV-1451 uptake. *Neurobiol Aging*. 2018;66:49-58. doi:10.1016/j.neurobiolaging.2018.01.024
- Pegueroles J, Vilaplana E, Montal V, et al. Longitudinal brain structural changes in preclinical Alzheimer's disease. *Alzheimers Dementia*. 2017;13(5):499-509. doi:10.1016/j.jalz.2016.08.010
- Cacciaglia R, Falcón C, Benavides GS, et al. Soluble A β pathology predicts neurodegeneration and cognitive decline independently on p-tau in the earliest Alzheimer's continuum: evidence across two independent cohorts. *Alzheimers Dement*. 2025;21(2):e14415. doi:10.1002/alz.14415
- Schöll M, Lockhart SN, Schonhaut DR, et al. PET imaging of tau deposition in the aging human brain. *Neuron*. 2016;89(5):971-982. doi:10.1016/j.neuron.2016.01.028
- Jacobs HIL, Boxtel MPJV, Jolles J, Verhey FRJ, Uylings HBM. Parietal cortex matters in Alzheimer's disease: an overview of structural, functional and metabolic findings. *Neurosci Biobehav Rev*. 2012;36(1):297-309. doi:10.1016/j.neubiorev.2011.06.009
- Chen T, Hutchison RM, Rubel C, et al. A statistical framework for assessing the relationship between biomarkers and clinical endpoints in Alzheimer's disease. *J Prev Alzheimers Dis*. 2024;11(5):1228-1240. doi:10.14283/jpad.2024.126
- Xie L, Das SR, Wisse LEM, et al. Baseline structural MRI and plasma biomarkers predict longitudinal structural atrophy and cognitive decline in early Alzheimer's disease. *Alzheimers Res Ther*. 2023;15(1):79. doi:10.1186/s13195-023-01210-z
- Eskildsen SF, Coupé P, Fonov VS, Pruessner JC, Collins DL, Initiative ADN. Structural imaging biomarkers of Alzheimer's disease: predicting disease progression. *Neurobiol Aging*. 2015;36:S23-S31. doi:10.1016/j.neurobiolaging.2014.04.034
- Young AL, Oxtoby NP, Garbarino S, et al. Data-driven modelling of neurodegenerative disease progression: thinking outside the black box. *Nat Rev Neurosci*. 2024;25(2):111-130. doi:10.1038/s41583-023-00779-6
- Jessen F, Spottke A, Boecker H, et al. Design and first baseline data of the DZNE multicenter observational study on predementia Alzheimer's disease (DELCODE). *Alzheimers Res Ther*. 2018;10(1):15. doi:10.1186/s13195-017-0314-2
- Jack CR, Bennett DA, Blennow K, et al. NIA-AA Research Framework: toward a biological definition of Alzheimer's disease. *Alzheimers Dement*. 2018;14(4):535-562. doi:10.1016/j.jalz.2018.02.018
- Morgado B, Klafki HW, Bauer C, et al. Assessment of immunoprecipitation with subsequent immunoassays for the blood-based diagnosis of Alzheimer's disease. *Eur Arch Psychiatry Clin Neurosci*. 2024. doi:10.1007/s00406-023-01751-2
- Hu Y, Kirmess KM, Meyer MR, et al. Assessment of a plasma amyloid probability score to estimate amyloid positron emission tomography findings among adults with cognitive impairment. *JAMA Netw Open*. 2022;5(4):e228392. doi:10.1001/jamanetworkopen.2022.8392
- Janelidze S, Stomrud E, Palmqvist S, et al. Plasma β -amyloid in Alzheimer's disease and vascular disease. *Sci Rep*. 2016;6(1):26801. doi:10.1038/srep26801

37. Grober E, Ocepek-Welikson K, Teresi JA. The free and cued selective reminding test: evidence of psychometric adequacy. *Psychol Sci Q*. 2009;51(3):266-282.
38. Petermann F, Lepach A. Wechsler Memory Scale – Fourth Edition (WMS IV). Manual Zur Durchführung Und Auswertung. *Deutsche Übersetzung Und Adaptation Der WMS IV von David Wechsler*. Pearson; 2012.
39. Mohs RC, Knopman D, Petersen RC, et al. Development of cognitive instruments for use in clinical trials of antedementia drugs: additions to the Alzheimer's disease assessment scale that broaden its scope. The Alzheimer's Disease Cooperative Study. *Alzheimer Dis Assoc Dis*. 1997;11(Suppl 2):S13-21. https://journals.lww.com/alzheimerjournal/fulltext/1997/00112/development_of_cognitive_instruments_for_use_in_3.aspx
40. Smith A. Symbol Digit Modalities Test. Western Psychological Services; 1991.
41. Dam NTV, Sano M, Mitsis EM, et al. Functional neural correlates of attentional deficits in amnesic mild cognitive impairment. *PLoS One*. 2013;8(1):e54035. doi:10.1371/journal.pone.0054035
42. Hughes CP, Berg L, Danziger W, Coben LA, Martin RL. A new clinical scale for the staging of dementia. *Br J Psychiatry*. 1982;140(6):566-572. doi:10.1192/bjp.140.6.566
43. Pfeffer RI, Kurosaki TT, Harrah CH Jr, Chance JM, Filos S. Measurement of functional activities in older adults in the community. *J Gerontol*. 1982;37(3):323-329. doi:10.1093/geronj/37.3.323
44. Kaufer DI, Cummings JL, Ketchel P, et al. Validation of the NPI-Q, a brief clinical form of the neuropsychiatric inventory. *J Neuropsychiatry Clin Neurosci*. 2000;12(2):233-239. doi:10.1176/jnp.12.2.233
45. Folstein MF, Folstein SE, McHugh PR. "Mini-Mental State": a practical method for grading the cognitive state of patients for the clinician. *J Psychiatr Res*. 1975;12(3):189-198. doi:10.1016/0022-3956(75)90026-6
46. Papp KV, Rentz DM, Orlovsky I, Sperling RA, Mormino EC. Optimizing the preclinical Alzheimer's cognitive composite with semantic processing: The PACC5. *Alzheimers Dement*. 2017;3(4):668-677. doi:10.1016/j.trci.2017.10.004
47. Philipps V, Amieva H, Andrieu S, et al. Normalized mini-mental state examination for assessing cognitive change in population-based brain aging studies. *Neuroepidemiology*. 2014;43(1):15-25. doi:10.1159/000365637
48. Zeineh MM, Engel SA, Thompson PM, Bookheimer SY. Unfolding the human hippocampus with high resolution structural and functional MRI. *Anat Rec*. 2001;265(2):111-120. doi:10.1002/ar.1061
49. Reuter M, Schmansky NJ, Rosas HD, Fischl B. Within-subject template estimation for unbiased longitudinal image analysis. *Neuroimage*. 2012;61(4):1402-1418. doi:10.1016/j.neuroimage.2012.02.084
50. Wuestefeld A, Baumeister H, Adams JN, et al. Comparison of histological delineations of medial temporal lobe cortices by four independent neuroanatomy laboratories. *Hippocampus*. 2024;34(5):241-260. doi:10.1002/hipo.23602
51. Wuestefeld A, Binette AP, Westen D van, et al. Medial temporal lobe atrophy patterns in early-versus late-onset amnesic Alzheimer's disease. *Alzheimer's Res Ther*. 2024;16(1):204. doi:10.1186/s13195-024-01571-z
52. Wisse LEM, Chételat G, Daugherty AM, et al. Hippocampal subfield volumetry from structural isotropic 1 mm3 MRI scans: a note of caution. *Hum Brain Mapp*. 2021;42(2):539-550. doi:10.1002/hbm.25234
53. Xie L, Wisse LEM, Wang J, et al. Deep label fusion: a generalizable hybrid multi-atlas and deep convolutional neural network for medical image segmentation. *Med Image Anal*. 2023;83:102683. doi:10.1016/j.media.2022.102683
54. Braak H, Tredici KD. From the entorhinal region via the prosubiculum to the dentate fascia: Alzheimer disease-related neurofibrillary changes in the temporal allocortex. *J Neuropathol Exp Neurol*. 2020;79(2):163-175. doi:10.1093/jnen/nlz123
55. Voevodskaya O, Simmons A, Nordenskjöld R, et al. The effects of intracranial volume adjustment approaches on multiple regional MRI volumes in healthy aging and Alzheimer's disease. *Front Aging Neurosci*. 2014;6:264. doi:10.3389/fnagi.2014.00264
56. Lorenzi M, Filippone M, Frisoni GB, Alexander DC, Ourselin S, Alzheimer's Disease Neuroimaging Initiative. Probabilistic disease progression modeling to characterize diagnostic uncertainty: application to staging and prediction in Alzheimer's disease. *NeuroImage*. 2019;190:56-68. doi:10.1016/j.neuroimage.2017.08.059
57. Lattmann-Grefe R, Vockert N, Machts J, et al. Dysfunction of the episodic memory network in the Alzheimer's disease cascade. *bioRxiv*. doi:10.1101/2024.10.25.620237
58. R Core Team. R: A Language and Environment for Statistical Computing. Published online 2022. <https://www.R-project.org/>
59. MacCallum RC, Kim C, Malarkey WB, Kiecolt-Glaser JK. Studying multivariate change using multilevel models and latent curve models. *Multivar Behav Res*. 1997;32(3):215-253. doi:10.1207/s15327906mbr3203_1
60. Neale MC, Hunter MD, Pritikin JN, et al. OpenMx 2.0: extended structural equation and statistical modeling. *Psychometrika*. 2016;81(2):535-549. doi:10.1007/s11336-014-9435-8
61. Couvy-Duchesne B, Frouin V, Bouteloup V, et al. Grey-matter structure markers of Alzheimer's disease, Alzheimer's conversion, functioning and cognition: a meta-analysis across 11 cohorts. *Hum Brain Mapp*. 2025;46(2):e70089. doi:10.1002/hbm.70089
62. Stouffer KM, Grande X, Duezel E, et al. Amidst an amygdala renaissance in Alzheimer's disease. *Brain*. 147(3):816-829. doi:10.1093/brain/awad411
63. Miller MI, Ratnanather JT, Tward DJ, et al. Network neurodegeneration in Alzheimer's disease via MRI based shape diffeomorphometry and high-field atlasing. *Front Bioeng Biotechnol*. 2015;3:54. doi:10.3389/fbioe.2015.00054
64. Stouffer KM, Chen C, Kulason S, et al. Early amygdala and ERC atrophy linked to 3D reconstruction of rostral neurofibrillary tau tangle pathology in Alzheimer's disease. *Neuroimage Clin*. 2023;38:103374. doi:10.1016/j.nicl.2023.103374
65. Jessen F, Amariglio RE, Buckley RF, et al. The characterisation of subjective cognitive decline. *Lancet Neurol*. 2020;19(3):271-278. doi:10.1016/s1474-4422(19)30368-0
66. Mitchell AJ, Beaumont H, Ferguson D, Yadegarfar M, Stubbs B. Risk of dementia and mild cognitive impairment in older people with subjective memory complaints: meta-analysis. *Acta Psychiatr Scand*. 2014;130(6):439-451. doi:10.1111/acps.12336
67. Wolfsgruber S, Polcher A, Koppa A, et al. Cerebrospinal fluid biomarkers and clinical progression in patients with subjective cognitive decline and mild cognitive impairment. *J Alzheimers Dis*. 2017;58(3):939-950. doi:10.3233/jad-161252
68. Buckley RF, Hanseeuw B, Schultz AP, et al. Region-specific association of subjective cognitive decline with tauopathy independent of global β -amyloid burden. *JAMA Neurol*. 2017;74(12):1455. doi:10.1001/jamaneurol.2017.2216
69. Rentz DM, Rodriguez MAP, Amariglio R, Stern Y, Sperling R, Ferris S. Promising developments in neuropsychological approaches for the detection of preclinical Alzheimer's disease: a selective review. *Alzheimers Res Ther*. 2013;5(6):58. <https://doi.org/10.1186/alzrt222>
70. Jutten RJ, Sikkes SAM, Amariglio RE, et al. Identifying sensitive measures of cognitive decline at different clinical stages of Alzheimer's disease. *J Int Neuropsychol Soc*. 2021;27(5):426-438. <https://doi.org/10.1017/s1355617720000934>
71. Mungas D, Harvey D, Reed BR, et al. Longitudinal volumetric MRI change and rate of cognitive decline. *Neurology*. 2005;65(4):565-571. <https://doi.org/10.1212/01.wnl.0000172913.88973.0d>

72. Wang G, Xiong C, McDade EM, et al. Simultaneously evaluating the effect of baseline levels and longitudinal changes in disease biomarkers on cognition in dominantly inherited Alzheimer's disease. *Alzheimers Dement*. 2018;4(1):669-676. <https://doi.org/10.1016/j.trci.2018.10.009>
73. Xiong C, Jasielec MS, Weng H, et al. Longitudinal relationships among biomarkers for Alzheimer disease in the Adult Children Study. *Neurology*. 2016;86(16):1499-1506. <https://doi.org/10.1212/wnl.0000000000002593>
74. Leuzy A, Chiotis K, Lemoine L, et al. Tau PET imaging in neurodegenerative tauopathies—still a challenge. *Mol Psychiatry*. 2019;24(8):1112-1134. <https://doi.org/10.1038/s41380-018-0342-8>
75. Eichenbaum H, Yonelinas AR, Ranganath C. The medial temporal lobe and recognition memory. *Annu Rev Neurosci*. 2007;30(1):123-152. <https://doi.org/10.1146/annurev.neuro.30.051606.094328>
76. Sheldon S, Moscovitch M. The nature and time-course of medial temporal lobe contributions to semantic retrieval: an fMRI study on verbal fluency. *Hippocampus*. 2012;22(6):1451-1466. <https://doi.org/10.1002/hipo.20985>
77. Terao CM, Alexander MW, Chalmers RP, et al. Identifying cognitive test scores associated with early tau burden in Alzheimer's disease. *Alzheimers Dement*. 2025;17(1):e70052. <https://doi.org/10.1002/dad2.70052>
78. Oschwald J, Guye S, Liem F, et al. Brain structure and cognitive ability in healthy aging: a review on longitudinal correlated change. *Rev Neurosci*. 2019;31(1):1-57. <https://doi.org/10.1515/revneuro-2018-0096>

SUPPORTING INFORMATION

Additional supporting information can be found online in the Supporting Information section at the end of this article.

How to cite this article: Baumeister H, Gellersen HM, Polk SE, et al. Disease stage-specific atrophy markers in Alzheimer's disease. *Alzheimer's Dement*. 2025;21:e70482. <https://doi.org/10.1002/alz.70482>