









Article

Fire-Induced Floristic and Structural Degradation Across a Vegetation Gradient in the Southern Amazon

Loriene Gomes da Rocha ^{1,2}, Ben Hur Marimon Junior ^{1,2,*} , Amauri de Castro Barradas ^{1,2}, Marco Antônio Camillo de Carvalho ¹ , Célia Regina Araújo Soares ¹, Beatriz Schwantes Marimon ², Gabriel H. P. de Mello Ribeiro ³ , Edmar A. de Oliveira ², Fernando Elias ⁴ , Carmino Emidio Júnior ¹, Dennis Rodrigues da Silva ¹ , Marcos Leandro Garcia ¹, Jesulino Alves da Rocha Filho ¹, Marcelo Zortea ^{1,2}, Edmar Santos Moreira ¹, Samiele Camargo de Oliveira Domingues ^{1,2}, Eraldo A. T. Matricardi ⁵ , David Galbraith ^{2,6}, Ted R. Feldpausch ^{2,7} , Imma Oliveras ^{2,8} and Oliver L. Phillips ⁶ 

- ¹ Graduate Program in Biodiversity and Amazonian Agroecosystems, Campus of Alta Floresta, UNEMAT–State University of Mato Grosso, Alta Floresta CEP 78.580-000, Brazil; lorienerocha@hotmail.com (L.G.d.R.); amauri.barradas@unemat.br (A.d.C.B.); marcocarvalho@unemat.br (M.A.C.d.C.); soaresia@unemat.br (C.R.A.S.); carmino.emidio@unemat.br (C.E.J.); silva.dennis@unemat.br (D.R.d.S.); ml.marcos@unemat.br (M.L.G.); jesulinoarf@gmail.com (J.A.d.R.F.); marcelozortea@gmail.com (M.Z.); edmar.moreira@unemat.br (E.S.M.); samiele.domingues@unemat.br (S.C.d.O.D.)
 - ² LABEV–Laboratory of Plant Ecology, Campus of Nova Xavantina, UNEMAT–State University of Mato Grosso, Nova Xavantina CEP 78.690-000, Brazil; biamarimon@unemat.br (B.S.M.); edmardinei@gmail.com (E.A.d.O.); d.r.galbraith@leeds.ac.uk (D.G.); t.r.feldpausch@exeter.ac.uk (T.R.F.); imma.oliverasmenor@ird.fr (I.O.)
 - ³ Faculdade de Engenharia Florestal, UFMT–Federal University of Mato Grosso, Campus of Cuiabá, Cuiabá CEP 78.060-900, Brazil; gabriel.ribeiro@ufmt.br
 - ⁴ Departamento de Biologia, Graduate Program in Forest Sciences, UFRA–Universidade Federal Rural da Amazônia, Campus of Capitão Poço, Capitão Poço CEP 68.650-000, Brazil; fernandoeliasbio@gmail.com
 - ⁵ Department of Forestry, UnB–University of Brasília, Brasília CEP 70.910-900, Brazil; ematricardi@unb.br
 - ⁶ School of Geography, University of Leeds, Leeds LS2 9JT, UK; o.phillips@leeds.ac.uk
 - ⁷ Geography, Faculty of Environment, Science and Economy, University of Exeter, Exeter EX4 4QJ, UK
 - ⁸ AMAP (Botanique et Modélisation de l'Architecture des Plantes et des Végétations), University Montpellier, CIRAD, CNRS, INRA, IRD, 34090 Montpellier, France
- * Correspondence: bhmarimon@unemat.br



Academic Editor: Tina Bell

Received: 24 April 2025

Revised: 30 June 2025

Accepted: 22 July 2025

Published: 24 July 2025

Citation: Rocha, L.G.d.; Marimon Junior, B.H.; Barradas, A.d.C.; Carvalho, M.A.C.d.; Soares, C.R.A.; Marimon, B.S.; Ribeiro, G.H.P.d.M.; Oliveira, E.A.d.; Elias, F.; Emidio Júnior, C.; et al. Fire-Induced Floristic and Structural Degradation Across a Vegetation Gradient in the Southern Amazon. *Forests* **2025**, *16*, 1218. <https://doi.org/10.3390/f16081218>

Copyright: © 2025 by the authors. Licensee MDPI, Basel, Switzerland. This article is an open access article distributed under the terms and conditions of the Creative Commons Attribution (CC BY) license (<https://creativecommons.org/licenses/by/4.0/>).

Abstract

Climate change and landscape fragmentation have made fires the primary drivers of forest degradation in Southern Amazonia. Understanding their impacts is crucial for informing public conservation policies. In this study, we assessed the effects of repeated fires on trees with a diameter ≥ 10 cm across three distinct vegetation types in this threatened region: Amazonian successional forest (SF), transitional forest (TF), and ombrophilous forest (OF). Two anthropogenic fires affected all three vegetation types in consecutive years. We hypothesized that SF would be the least impacted due to its more open structure and the presence of fire-adapted savanna (Cerrado) species. As expected, SF experienced the lowest tree mortality rate (9.1%). However, both TF and OF were heavily affected, with mortality rates of 28.0% and 29.7%, respectively. Despite SF's apparent fire resilience, all vegetation types experienced a significant net loss of species and individuals. These results indicate a fire-induced degradation stage in both TF and OF, characterized by reduced species diversity and structural integrity. Our findings suggest that recurrent fires may trigger irreversible vegetation shifts and broader ecosystem tipping points across the Amazonian frontier.

Keywords: biodiversity losses; transitional forest; resilience; drought vulnerability; tree mortality

1. Introduction

Forest fires in the Amazon have been steadily increasing over the past few decades, largely driven by climate change—particularly frequent heatwaves and droughts [1]—and human activities [2]. This situation is especially concerning along the region's southern edge [3], where recurrent, intense droughts and extreme temperatures are exacerbated by climate change [4,5]. These conditions expose vegetation to severe fires, such as those recorded in 2016 that were driven by one of the most substantial El Niño events in decades [6]. The effects of such extreme droughts may persist for months or even years after an El Niño event [7,8], as vegetation suffers high mortality from water stress, heat, and strong winds [9,10]. For instance, in 2019, still weakened by the 2016 drought, Southern Amazonian vegetation became more vulnerable, increasing its susceptibility to recurrent and extensive wildfires.

Unlike the Cerrado vegetation of central South America—a savanna biome adapted to frequent fires—its neighboring Southern Amazonian forests, such as open ombrophilous forest (OF) [11] and ecotonal forest types like successional forests (SF) (*sensu* [12,13]) and transitional successional forests (*sensu* [11]), are neither fire-resistant nor fire-resilient, especially when exposed to repeated fires over short intervals. Although the Amazon did not experience the same extreme drought conditions in 2019 as in 2016, the widespread fires that year drew international attention [14]. These fires were facilitated by weakened post-El Niño forest resilience and legislative weaknesses (e.g., Brazilian New Forest Code—Law n° 12.651), which encouraged illegal burning to clear new areas for pasture [15,16].

This situation underscored the role of forest fragmentation and unsustainable land-use practices in exacerbating the Amazon's vulnerability to fire, particularly in areas already stressed by climatic extremes. At the same time, Brazil's agricultural frontier has advanced beyond the Amazon–Cerrado transition zone, with agribusiness expanding further into Southern Amazonia (e.g., [17]). In these frontier regions, forest conversion to pasture remains the primary driver of fire [18], a problem intensified by inadequate fire prevention and suppression efforts at the municipal, state, and federal levels [19].

Under natural regimes, fire return intervals in the Amazon typically span several centuries [20]. In contrast, savanna vegetation in the Cerrado biome experiences much more frequent fires [21,22], including successional forests located within savanna–forest ecotones. As a result, Cerrado flora has evolved notable fire adaptations, making it highly resilient to disturbance [23,24]—a trait expected even in encroached areas undergoing succession. However, intense anthropogenic pressure in the Amazon–Cerrado transition zone, including in successional and transitional forests within the Amazon, has led to increased fire frequency and accelerated landscape fragmentation [25]. Given the low resilience of Amazonian forests to recurrent extreme climate events [26], continuous monitoring of tree mortality in both ecosystems is essential. As tropical forests play a pivotal role in the global climate system, research that quantifies their vulnerability—particularly to repeated fires—has become increasingly urgent.

Even isolated and infrequent surface fires can cause substantial damage to Amazonian vegetation [27,28]. However, repeated fires over short intervals are far more destructive [29,30], disrupting regeneration processes [31] and delaying canopy recovery over the long term [32]. This is largely due to the accumulation of fuel from vegetation killed in previous fires, triggering a self-reinforcing cycle of degradation [33], particularly after drought events [34], with disproportionately greater effects on the basal area of small trees. Studies conducted in Southern Amazonian forests have revealed a negative influence of frequent fires on both the composition and structure of small trees, a condition that affects the capacity and direction of forest recovery [35]. With wildfires becoming more frequent and widespread across Brazil's southern agricultural frontier, fire threatens to

reduce tree diversity in the remaining forests and disrupt regional carbon cycling, with implications for the global vegetation carbon sink [35]. Furthermore, extensive landscape fragmentation increases the likelihood of fire outbreaks, exacerbating edge effects and heightening forest vulnerability across Southern Amazonia [3,36].

Understanding not only the edaphoclimatic mechanisms that influence species composition and structural dynamics in vegetation of the Amazon–Cerrado contact zones [37–40] but also the role of fire in these processes is essential. These transitional vegetation types are particularly susceptible to fire, especially along the agricultural frontier, where landscape fragmentation and intentional burning are commonly used to clear land for pasture and crop expansion. Contact zones in the Southern Amazon contain transitional vegetation types, such as *cerradão*, here referred to as transitional forest (TF), as well as successional forests resulting from the process of savanna encroachment (*sensu* [38]), here referred to as successional forest (SF). These forests may occur in contact with mature forest formations typical of Southern Amazonia, such as open ombrophilous forest (OF) (*sensu* [11]). Long-term monitoring of these forests through permanent plots offers a valuable opportunity to assess how Amazonian ecosystems respond to drought and fire—two intrinsically linked processes [41].

In this study, we tested the hypothesis that fire impacts in the Southern Amazon vary across a vegetation gradient, driving forest phytophysiognomic change through a process of ‘secondarization’ (see [30]). We hypothesized that forest formations such as OF and TF would be more severely affected by fire than SF, which are *a priori* less vulnerable due to their more open structure (i.e., canopy openness and lower tree density) and species composition. Furthermore, we expected that fire-induced tree mortality and associated changes in forest structure and species composition (e.g., shifts in dominant tree species) would be lowest in SF, intermediate in TF, and highest in OF. This pattern would reflect a gradient of decreasing fire resilience from more open- to more closed-canopy forest formations. This hypothesis is further supported by the presence of Cerrado species in SF, which are evolutionarily well-adapted to recurring fires [42,43].

2. Materials and Methods

2.1. Study Area

We established the study areas under the PELD/CNPq Site 15 Project, the RAINFOR Tropical Forest Monitoring Network (<https://rainfor.org/>) (accessed on 23 February 2020), and the PPBio–Rede Biota do Cerrado/CNPq/MMA Project. The inventories were added to the ForestPlots database (<https://forestplots.net/>) and to the Rede Floresta (ReFlor/FAPEMAT). Sampling plots were installed in three distinct vegetation types: a successional forest (SF) (10°21′57″ S, 56°49′07.8″ W) at Fazenda Serra Azul; a transitional forest (TF) (10°21′7.3″ S, 56°48′49.50″ W); and an open ombrophilous forest (OF) (10°20′07.5″ S, 56°48′54.1″ W), the latter two located at Fazenda Hiroshima, in the municipality of Alta Floresta, state of Mato Grosso, Brazil (Figure 1). These three areas are approximately 1.5 km apart. All study sites are located within the northern agricultural frontier of Mato Grosso, in a broad zone of agricultural colonization known as the “Arc of Deforestation”, where extensive mechanized cropping and cattle ranching dominate the landscape.

The local climate is classified as Aw under the Köppen system, characterized as tropical with distinct wet and dry seasons. The dry season extends from April to August, and the rainy season lasts from September to May. Mean annual rainfall is approximately 2500 mm, and the average annual temperature is 26 °C, with maximum and minimum temperatures of 38 °C and 20 °C, respectively [44].

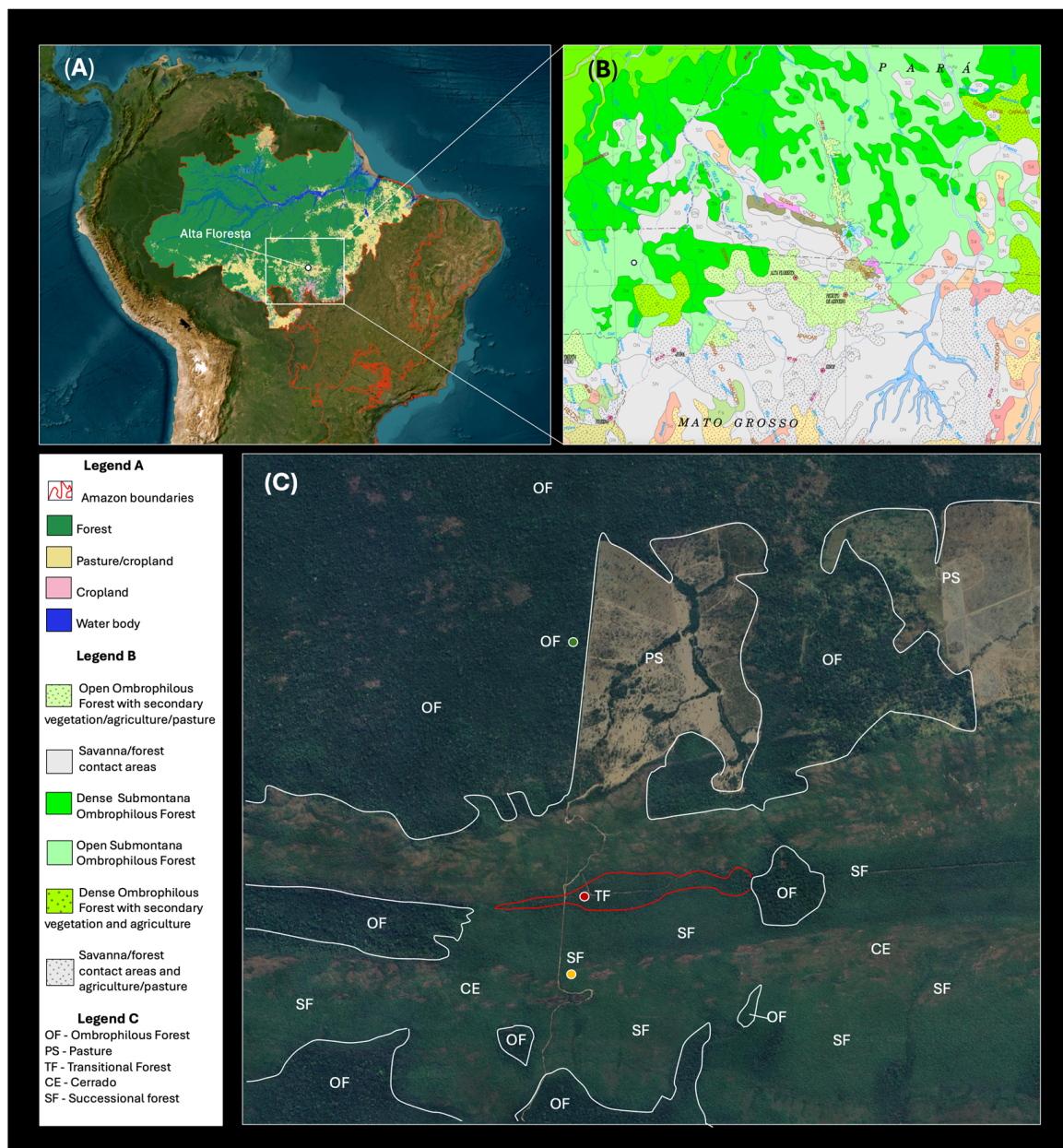


Figure 1. (A) Location of the study area in the Southern Amazon within the municipality of Alta Floresta, Mato Grosso, Brazil, highlighting the main land use classes. (B) Regional view of the study area showing the main vegetation types based on the IBGE Vegetation Classification Map (2004) available at: <https://www.ibge.gov.br/geociencias/informacoes-ambientais/estudos-ambientais/> (accessed on 25 October 2024). (C) Distribution of vegetation types in the study area: green dot indicates open ombrophilous forest, red dot indicates transitional forest, and yellow dot indicates successional forest.

Soil types vary slightly among the three sites, following a topographic gradient. According to the Brazilian Soil Classification System (SiBCS), the OF site is characterized by a Red–Yellow Latosol, the TF by a Yellow Latosol, and the SF by a Quartzarenic Neosol. The OF soil is deep, dystrophic, and allic, with a sandy clay loam texture; the TF soil is dystrophic, with a sandy loam texture; and the SF soil is dystrophic, shallow, and sandy. These three soil types form a catena from the base to the top of a hillslope.

2.2. Description of Phytophysiognomies

The identification of different phytophysiognomies was based on initial inventory data and biogeographical references from the RADAMBRASIL Project [11] as well as previous studies on the Amazon–Cerrado transition [12,13,37–40]. The study areas consisted of 1-hectare forest plots, each divided into twenty-five 400 m² subplots, designed to represent the local vegetation, including areas affected by fire. Due to increasing aboveground biomass from SF to TF and OF following a topographic catena (sensu [40]), we considered the vegetation types as forming a gradient with OF in the bottom, TF in the slope, and SF in the top of a hillslope.

In this gradient, SF represents an intermediate successional stage of Cerrado vegetation undergoing encroachment by forest species (sensu [37–39]). In our study area, SF occurs along the margins of small Cerrado enclaves embedded within the Amazon biome, shaped by edaphic–topographic conditions (e.g., hill elevation) [40,45]. In such environments, patches of ecosystems characteristic of other phytogeographic provinces emerge, though they are embedded within a distinct floristic domain [46,47].

The TF is a type of forest vegetation occurring in the transition between Cerrado and forest on both dystrophic and mesotrophic soils, with its floristic composition varying according to soil fertility [48]. This forest vegetation was frequent in eastern Mato Grosso [49–53], which has been extensively deforested, leaving only a few intact remnants [54]. Transitional forest has an almost continuous canopy, with tree cover between 70 and 90% and average height ranging from 8 to 15 m [48]. In Mato Grosso, TF generally occurs in scattered patches in contact areas between the Cerrado and pre-Amazonian transition forest [12] or contact areas with Cerrado enclaves, such as those in this study.

The open ombrophilous forest (OF) is a forest formation in the Amazon related to a climate with a greater abundance of rainfall that is better distributed throughout the year [11]. The OF in this study is of the submontane subtype [11], with canopy coverage between 60% and 80% and heights ranging from 15 to 35 m. A submontane open ombrophilous forest is characterized by more widely spaced trees, a sparse shrub layer, and rosette phanerophytes or woody lianas [55]. It occurs in a climate with more than two but fewer than four dry months, with average temperatures between 24 and 25 °C. The forest is also characterized by an open canopy with palms, lianas, or bamboos [56,57].

2.3. Inventory Procedures

We conducted the first set of inventories between June 2017 and August 2019 (before fire), prior to the fires in September 2019 and 2020. The second inventory took place from 13 to 15 August 2021 and 5 to 6 September 2021 (after fire), which coincides with the hottest and driest months in this region. The period between inventories for the SF and TF areas was four years, while for the OF, it was three years. The areas were impacted by two accidental fires (Figure 2). The first, in 2019, was of lower intensity and did not fully impact the tree flora, mainly due to the limited availability of fuel load—a natural condition in undisturbed primary forests. On that occasion, based on observations by [48], no post-fire mortality was recorded for trees in diameter classes > 10 cm in the OF. Unfortunately, no data was available for the SF or TF after the first fire. The second fire occurred in September 2020 and affected the SF, TF, and whole OF study area (Figure 3).

In the first inventory (Before), a 1 ha (100 × 100 m) permanent plot was established in each vegetation type, subdivided into 25 subplots measuring 20 × 20 m each. The study areas in the first inventory showed no visible signs of recent or past fires, leading us to classify them as undisturbed vegetation. The trees were identified to the species or genus level, marked with a specific number, and measured for diameter and height following the

RAINFOR network protocol [58]. We measured tree height and diameter at breast height (DBH) for all trees ≥ 10 cm in OF and ≥ 5 cm in TF and SF.

For the second inventory (After), we measured all live individuals following the same parameters as the first. For newly recruited individuals, we identified the species in the field using experienced botanists. When necessary, we collected botanical material samples, and when possible, we included individuals with flowers in the Herbarium of Southern Amazonia (HERBAM), State University of Mato Grosso, Alta Floresta Campus. The results of the first inventory are available in [48] as well as via the RAINFOR Forest Inventory Network portal ForestPlots: <https://forestplots.net/> (accessed on 18 March 2022). For taxon name review and updates, we used the Flora 2020 package (Tools for Interacting with the Brazilian Flora 2020 in the R software environment (R package version 0.3.4. <https://CRAN.R-project.org/package=flora>, accessed on 18 March 2022)).

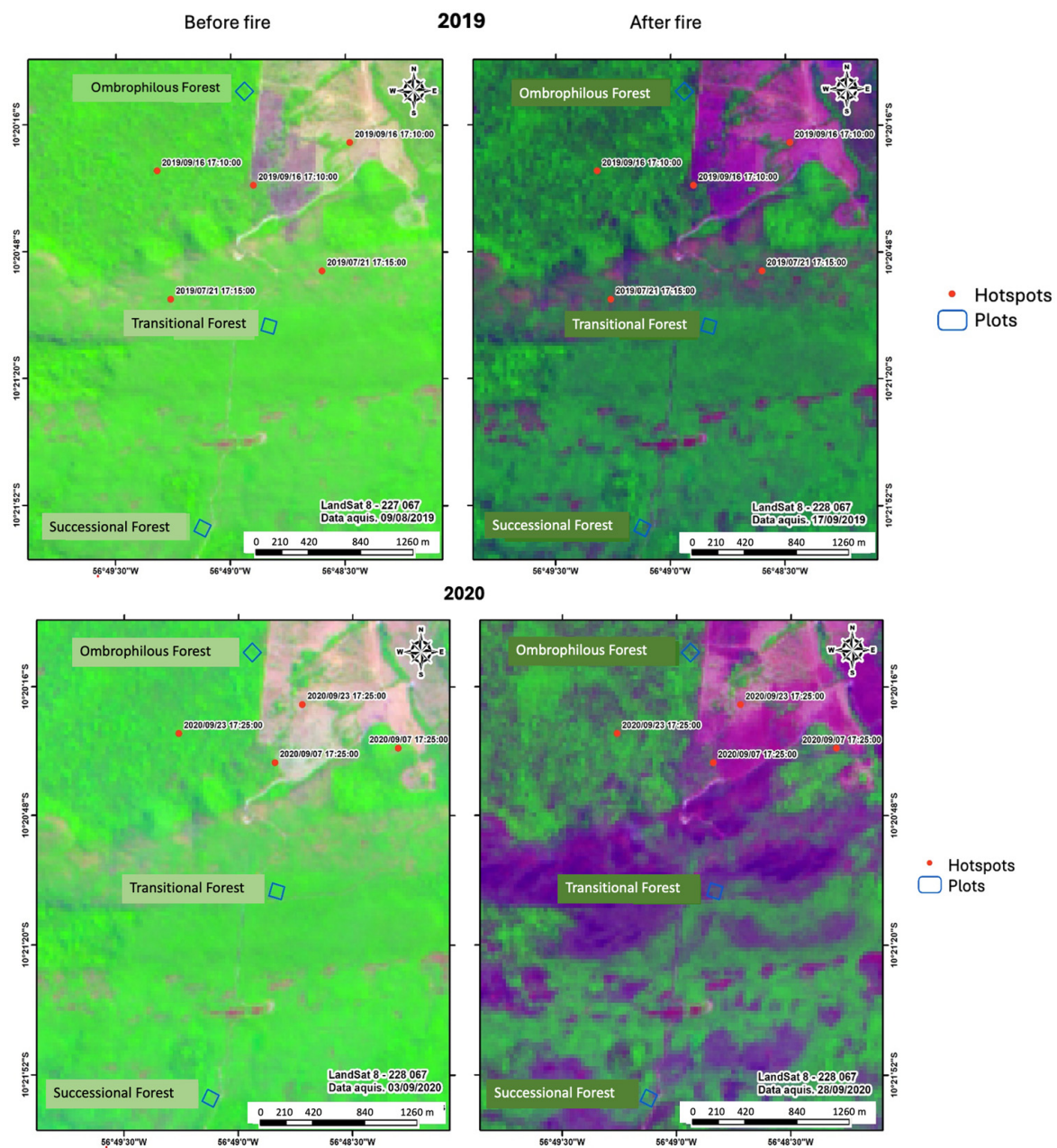


Figure 2. Landsat 8 satellite images showing hotspots (heat sources) and fire scars recorded for the study areas in 2019 and 2020 before (left) and after (right) the fire. A notably reduced impact can be observed in the study areas after the fire in 2020.



Figure 3. Images of the areas after the second fire in Southern Amazon, Alta Floresta, Mato Grosso, Brazil.

2.4. Data Analysis

We analyzed the floristic composition and phytosociological parameters using the Mata Nativa software, version 4.04. Trees that reached or exceeded the minimum inclusion diameter ($\text{DBH} \geq 5 \text{ cm}$ for TF and SF and $\geq 10 \text{ cm}$ for OF) were considered “recruits” in each subsequent measurement. We adopted the same criteria for identifying individuals classified as “dead” in the subsequent inventory. We considered the following conditions for mortality calculation: standing dead tree, fallen or broken tree due to natural or anthropogenic causes (e.g., fire). For proper identification of all individuals killed by fires, we selected only those with clear fire marks on the trunk or stem up to a minimum of 1 m in height (visible signs of charring). We also created a special classification for those individuals, organizing them by species when identification was possible.

We calculated phytosociological parameters and the Shannon–Wiener diversity index (H') for the community based on data collected from both inventories, following Müeller-Dombois and Ellenberg [59].

The species were ranked according to the importance value index (IVI), which considers the relative values of density, frequency, and dominance. This is an excellent indicator of the success of establishment, growth, and reproduction of a given species, which implies the success or failure in fulfilling its ecological niche (see [60]).

To understand how fire affects the different types of vegetation in the southern Amazon, we used the floristic diversity of three types of forest formations present in the Southern Amazon, successional forest (SF), transitional forest (TF), and ombrophilous forest (OF), at two different times: one before and another after an accidental fire. For the tests, we used the R programming environment (R Core Team, 2025), and based on a presence and absence table for the three types of vegetation, we calculated the Shannon diversity of each plot

sampled in the three areas. After calculating diversity, we performed normality tests using the Shapiro–Wilk test and homoscedasticity using the Levene test. Since the assumptions of normality were not met, we used a paired Wilcoxon test.

3. Results

3.1. Successional Forest

The number of living individuals recorded in the successional forest (SF) decreased slightly from 1534 in 2017 to 1501 in 2021 (Table 1), resulting in a net loss of 33 individuals due to fire. This reduction contributed to a lower total basal area in 2021 (11.9 m²) compared to 2017 (12.2 m²), representing a net loss of basal area of 1.9% between the two inventories. In the first inventory (2017), we recorded 95 species, 66 genera, and 36 families. By 2021, these numbers had declined to 83 species, 64 genera, and 36 families.

Table 1. Phytosociological characteristics and percentage of losses between the first inventory (2017) and the second inventory (2021) (before and after the main fire) in the successional forest (SF), transitional forest (TF), and ombrophilous forest (OF), Southern Amazon, Alta Floresta-MT. NA = not applicable.

Site	Sampling	2017	2021	Losses (%)
SF	Families	36	36	0
	Genus	66	64	3.0
	Species	95	83	12.6
	Recruits	NA	107	NA
	Dead Trees	NA	140	NA
	Individuals	1534	1501	2.1
	Shannon Index (H')	3.24	3.09	4.6
	Pielou Equability (J')	0.71	0.7	1
	Basal area (m ² ha ^{−1})	12.15	11.9	1.9
TF	Families	31	30	3.2
	Genus	48	45	6.2
	Species	63	59	6.3
	Recruits	NA	81	NA
	Dead Trees	NA	468	NA
	Individuals	1672	1285	23.1
	Shannon Index (H')	3.2	2.96	7.5
	Pielou equability (J')	0.78	0.73	6.4
	Basal area (m ² ha ^{−1})	14.5	12.2	15
OF	Families	38	32	15.8
	Genus	80	69	13.7
	Species	97	83	14.4
	Recruits	0	24	NA
	Dead Trees	0	128	NA
	Individuals	430	326	24.2
	Shannon Index (H')	3.85	3.62	6
	Pielou equability (J')	0.84	0.82	2.4
	Basal area (m ² ha ^{−1})	28.9	23.5	18.5

Over the period surveyed, 14 species disappeared (Table S1), corresponding to a 12.6% loss. None of the lost species were among those with high importance value index (IVI) (Table S2); rather, all belonged to the group classified as rare within the floristic composition of the plant community.

Among the species that disappeared due to mortality, 12 had recently deceased individuals showing signs of fire damage (Tables 1 and S1). Despite these changes in species richness and composition, no significant differences were detected in the Shannon diversity

index (H') between 2017 (3.24) and 2021 (3.09) (Figure 4) (paired Wilcoxon test: $W = 74.5$, $p = 0.647$, effect size = 0.06). Similarly, basal area and individual losses were minimal between inventories, supporting our hypothesis of a limited fire impact on the floristic and structural integrity of the SF plant community (Table 1).

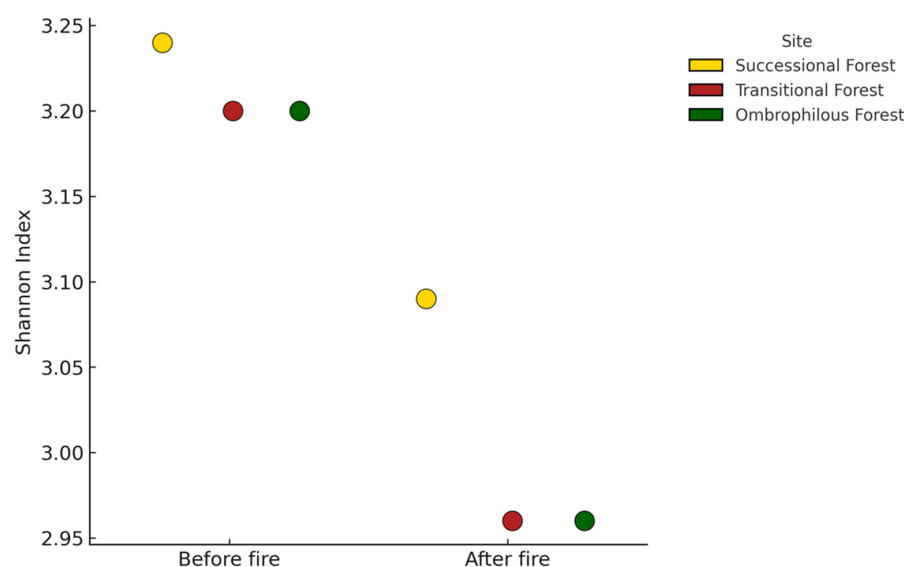


Figure 4. Floristic diversity (Shannon index) of successional forest, transitional forest, and open ombrophilous forest sampled in Southern Amazonia (Alta Floresta, MT) before and after the second fire.

The species with the highest IVI in the SF, classified as common species, were *Moquilea egleri* (48.8–50.2), *Dacryodes microcarpa* (30.2–33.1), *Caraipa densifolia* (21.9–23.4), *Bonyunia antoniifolia* (14.9–16.24), and *Ochthocosmus barrae* (15.5–15.8) in the inventories before and after fires, respectively (Table S2). These results suggest no significant alterations in species dominance caused by fire (Figures S1 and S2).

Between the surveyed years, 139 individuals died, with 76.4% of the mortality occurring in the first diameter class (5–10 cm) (Figure 5). The species contributing most to mortality within this diameter class were *Guatteria discolor* (11 individuals), *Dacryodes microcarpa* (6), and *Humiria balsamifera* (5).

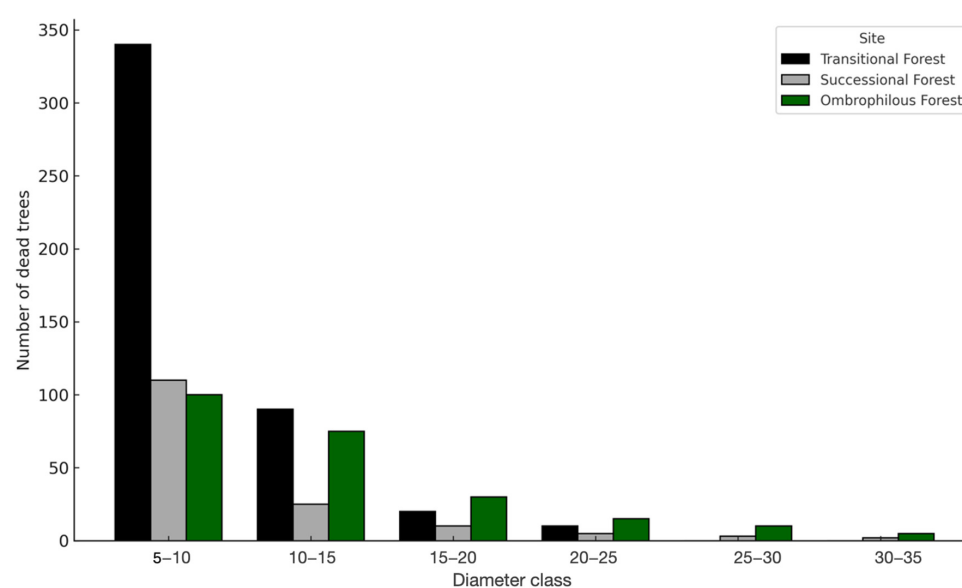


Figure 5. Tree mortality distribution by diameter class (cm) after the second fire in the transitional forest (TF), successional forest (SF), and open ombrophilous forest (OF) in the Southern Amazon, Alta Floresta-MT, Brazil.

The recruitment rate was 4.6% year⁻¹, while the mortality rate reached 5.4% year⁻¹ between inventories (Figures 5 and 6). The species contributing most to recruitment were *Dacryodes microcarpa* (20 individuals), *Caraipa densifolia* (14 individuals), and *Tachigali vulgaris* (13 individuals), the latter being a pioneer species commonly associated with forest–savanna ecotones in the Amazon–Cerrado transition. Some species, such as *Vochysia haenkeana* (12 individuals before fires and 14 after), *Emmotum nitens* (14 and 15), *Ormosia paraensis* (9 and 10), and *Oenocarpus distichus* (16 and 18), exhibited no mortality during the study period, which may suggest fire resistance.

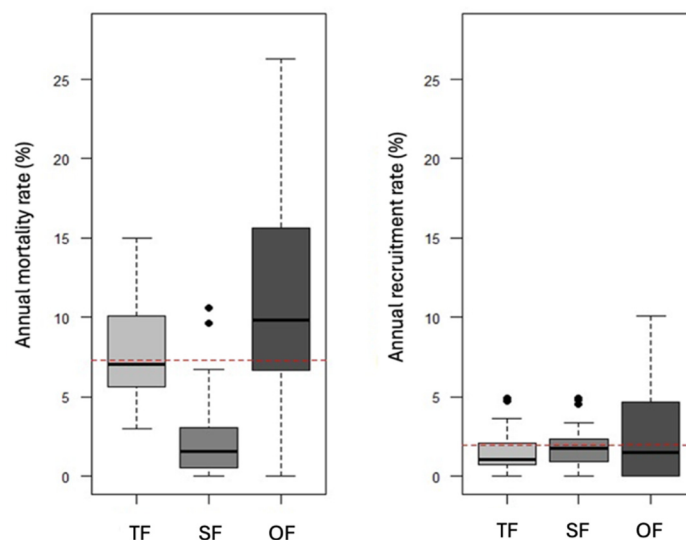


Figure 6. Demographic parameters and annual rates of tree community dynamics of the transitional forest (TF), successional forest (SF), and open ombrophilous forest (OF) after fire in Alta Floresta-MT, Brazil. Annual mortality (%) between inventories (3-year interval) and recruitment rates per sampled plot.

3.2. Transitional Forest

The floristic composition of the transitional forest (TF) changed over the four-year period. In the first inventory (2017), 63 species, 48 genera, and 31 families were recorded, while in 2021, these numbers declined to 59 species, 45 genera, and 30 families (Table 1). Four species disappeared (*Tachigali* sp., *Swartzia* sp., *Nectandra cuspidata*, and *Bonyunia antoniifolia*) (Table S1), while two new species emerged during this period (*Aspidosperma cuspa* and *Vochysia divergens*).

The families with the highest species counts also shifted between inventories (Figure S3). Fabaceae, which was the richest family in 2017 with eight species, dropped to third place in 2021 with six species. These changes in species richness and floristic composition were reflected in the Shannon diversity index (H'), which showed a significant decline from 3.22 to 2.96 (paired Wilcoxon test: $W = 0$, $p < 0.05$, effect size = 0.859) (Table 1, Figure 4).

The number of living individuals decreased from 1672 in 2017 to 1285 in 2021 (Table 1), a net loss of 387 individuals. This decline was also reflected in the total community basal area, which decreased from 14.5 m² in 2017 to 12.2 m² in 2021, corresponding to a net basal area loss of 15.8% (mortality minus recruitment) over the four-year period. The average annual mortality rate was 7.9% of individuals per hectare per year, resulting in a cumulative tree mortality of 28.0% in the transitional forest (TF) from the first to the second inventory (Figures 5 and 6).

The most stem-rich family in the latest inventory was Ixonanthaceae, with 331 individuals. Among the 45 genera identified in the TF area, 10 contributed significantly to overall abundance, collectively accounting for 72.5% of the total number of individuals. In contrast,

the least quantitatively represented group comprised only eight individuals, representing just 0.6% of all individuals in the area.

The five species with the highest IVI were *Ocathocosmus barrae* (42.9–51.05 in the first and second inventories), *Moquilea egleri* (39.2–45.8), *Oenocarpus distichus* (12.4–15.9), *Emmotum nitens* (12.3–15.5), and *Bocageopsis mattogrossensis* (10.1–12.5) (Table S3, Figure S4). Between 2017 and 2021, 468 individuals died, resulting in an average annual mortality rate of 7.9% year⁻¹. Of these, 366 individuals (78%) showed evidence of fire-related mortality. The first diameter class (5–10 cm) accounted for approximately 75% of these deaths (Figure 5). In this diameter class, the species contributing most to mortality were *Guatteria discolor* (36 individuals), *Miconia holosericea* (33), and *Myrcia sylvatica* (29).

The recruitment rate of the community (1.5% year⁻¹) did not offset the mortality rate, with most recruited individuals (91.3%) also belonging to the first diameter class. The species contributing most to recruitment were *Ocathocosmus barrae* (26 individuals), *Pagamea guianensis* (16), and *Moquilea egleri* (6).

Some species demonstrated fire resistance during the study period: *Casearia javitensis* (IVI% 0.21), with two individuals and no recorded mortality; *Erythroxylum daphnites* (IVI% 0.21), also with two individuals and no mortality; and *Pterodon emarginatus* (IVI% 0.61), with three individuals, no mortality, and one recruit (IVI% 0.33).

3.3. Open Ombrophilous Forest

The OF experienced changes in its floristic composition over the three-year period. In the first inventory (2018), 97 species, 80 genera, and 38 families were recorded, representing the highest diversity among the three study areas. By 2021, these numbers had declined to 83 species, 69 genera, and 32 families (Table 1). Over the surveyed years, 15 species disappeared (Table S1). A notable feature in OF is the dominance of palms (Arecaceae), a key component of the most representative phytophysiognomies in Southern Amazonia. The two species with the highest importance value index (IVI), *Attalea maripa* and *Euterpe precatoria*, belong to this family (Table S4, Figure S6). Together, these account for 21.2% of the community's total basal area. When all species of the Arecaceae family are considered, palm dominance increases to 21.6% of the total basal area.

The number of living individuals declined from 430 in 2018 to 326 in 2021 (Table 1), a net loss of 80 individuals, with recruitment (24) less than one-fifth that of mortality (128). Consequently, total basal area in 2021 (23.5 m²) was lower than in 2018 (28.9 m²). The mortality rate was 11.7% year⁻¹, with 24.2% of trees dying after the fire, leading to a net basal area loss of 18.5% between the first and second inventories. Fabaceae remained in first place in both inventories (Figure S5). Changes in species richness and floristic composition led to significant differences in the H' between 2018 (3.85) and 2021 (3.62) (paired Wilcoxon test: $W = 0$, $p < 0.05$, effect size = 0.825) (Table 1, Figure 4).

The most representative family in terms of the number of individuals in OF was Arecaceae (palms), with 112 individuals in the first inventory and 103 in the second (Figure S3). Among the 69 genera recorded, 10 contributed significantly to overall abundance, accounting for 56% of the total individuals. The lowest quantitative representation (only one individual per species) was observed in 26 genera, which made up just 8% of all individuals in the area. The species with the highest IVI in the forest formation were *Attalea maripa* (30.9–45.71) (palm), *Euterpe precatoria* (19.2–21.29) (palm), *Amaioua guianensis* (16.6–16.84), *Protium altissimum* (10.9–12.39), and *Sparattosperma leucanthum* (7.6–10.31) in the first and second inventories, respectively (Table S4).

The 10–15 cm diameter class accounted for approximately 54.7% of the tree deaths (Figure 5). Between the surveyed years, 128 individuals died in OF, resulting in an average annual mortality rate of 11.7% (Figure 6). In this forest community, the species

that contributed most to mortality in the initial diameter classes were *Euterpe precatoria* (10 individuals), *Croton palanostigma* (9), and *Socratea exorrhiza* (7).

The average annual mortality rate ($11.7\% \text{ year}^{-1}$) was nearly five times higher than the recruitment rate ($2.5\% \text{ year}^{-1}$), with the first diameter class (10–15 cm) accounting for the majority of the dead individuals (Figure 5). The species that contributed most to the recruitment rate were *Euterpe precatoria* (three individuals) and *Xylopia frutescens* (two individuals). In 2019, the first fire affected 70% of the forest plots [48], whereas in 2020, the fire reached almost 100% of the area, causing the death of 46 out of 128 individuals, i.e., 35.9% of the total mortality.

3.4. Comparative Results

Among the three vegetation types studied, the most severely impacted by fire was OF, where we recorded the most negative basal area balance. The mortality rate in this forest far exceeded the recruitment rate, significantly higher than what is typically observed in Amazonian forests under normal conditions (Figure 6).

Similarly, the TF recorded the second-highest net post-fire biomass loss, although its post-fire impact was lower than that of the OF. The TF exhibited the lowest net biomass loss when comparing the balance between recruitment and mortality, differing only slightly from what is typically observed for this vegetation type under normal conditions [61,62]. On the other hand, the TF showed a high post-fire mortality rate (28%), slightly lower than that of the OF (29.8%), and both were considerably higher than that observed in the SF vegetation (9.1%) (Figure 7). These findings reveal, concerning fire, the significant vulnerability of the two forest types studied and the resilience of the SF (Figure S7).

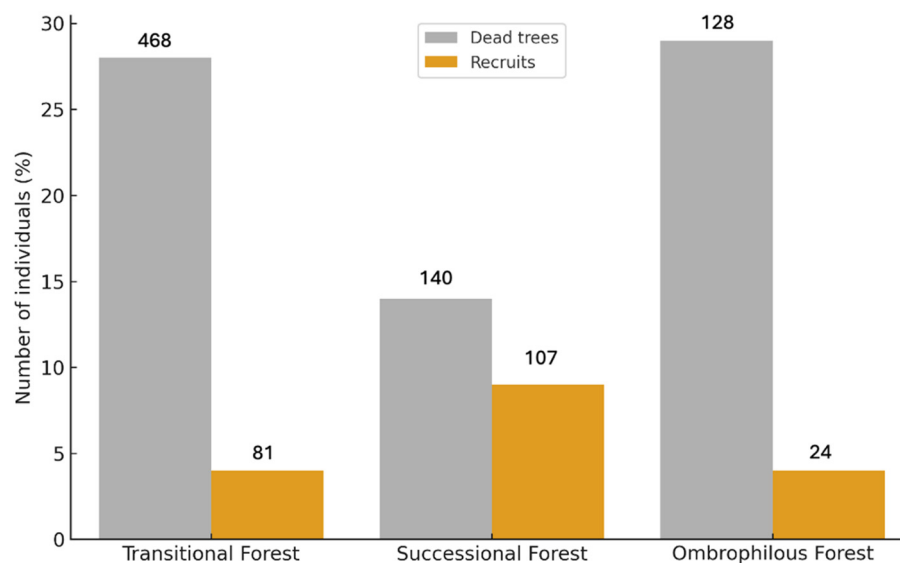


Figure 7. Annual mortality and recruitment rates (%) of trees by vegetation type in Alta Floresta, MT, Brazil, including the number of dead trees.

4. Discussion

Our results corroborate the hypothesis of a fire vulnerability gradient, characterized by the highest tree mortality in the ombrophilous forest (OF), intermediate levels in the transitional forest (TF), and the lowest in the successional forest (SF). The comparatively lower post-second-fire loss of individuals in the SF was anticipated, given its structurally open canopy and inherently lower tree density—factors that hinder fire propagation. Although mortality in the SF exceeded recruitment, resulting in a net basal area loss of 1.9%, this was insufficient to be considered a significant post-fire impact. In contrast, the TF experienced approximately 28% tree mortality following repeated fires, compromising

nearly 16% of the community's total basal area. This level of loss reflects substantial structural and floristic degradation, threatening the long-term persistence of this vegetation type. If fire events continue, the risk of local extinction of TF in the Brazilian agricultural frontier becomes evident, particularly given its restricted occurrence in forest–Cerrado ecotones and the scarcity of intact remnants [12].

We observed a similar situation in the OF, which suffered an even greater basal area loss (18.5%) in the post-second-fire inventory. The first fire was less intense, spreading as an understory fire, with no marks observed on tree trunks or palm stems above 70 cm. Additionally, no mortality of trees or palms with diameters ≥ 10 cm at 1.2 m above ground was recorded three months after the first fire in 2019 [48]. However, delayed mortality likely occurred, as minor stem injuries caused by fire can lead to tree death over time [61].

The smallest diameter class, comprising thinner-stemmed trees, accounted for 50% of the dead individuals, highlighting the vulnerability of younger generations in the tree community. As a result, the TF's and OF's present and future structures have been significantly compromised. Smaller-diameter woody plants in the Amazon, with relatively immature bark, exhibit low fire resistance compared to larger individuals with thicker, well-developed bark [62,63]. Thicker or corkier bark protects internal tissues from fire damage [64], and disturbances such as edge effects, water stress, and fire—or their combination—affect smaller individuals more severely [65]. These changes may jeopardize these ecosystems' long-term structural and floristic integrity, especially in the OF and TF.

Conversely, the species that contributed most to recruitment across all three areas was the palm *Euterpe precatoria*, followed by the pioneer tree *Xylopia frutescens*, both recognized for their high adaptability to disturbed areas. The high post-fire recruitment of *E. precatoria*, especially in the OF, may be attributed to its large stem base diameter and root cone. As only stem diameters at 1.20 m above ground were recorded in our study, it is reasonable to assume that smaller *E. precatoria* individuals benefit from these traits by surviving the fire, as noted by Liesenfeld [66] in a controlled fire study, and then growing. More of these palms will likely reach the minimum inclusion diameter in subsequent inventories, increasing their dominance.

High recruitment rates following anthropogenic or natural disturbances represent both a strategy for species establishment and a common mechanism in the natural regeneration dynamics of tropical vegetation [66,67] potentially leading to shifts in vegetation types. For example, the appearance of *Xylopia frutescens* in the OF—where it ranked second in recruitment—strongly suggests changes in the forest's species composition post-fire, as *X. frutescens* is typically found in Cerrado areas of the Amazon. Additionally, *Attalea maripa*, a palm characteristic of Amazonian forests but frequently found in successional forests, degraded areas, and even pastures [68], showed a notable increase in dominance. This species, which had the highest importance value index (IVI) in the OF, increased its IVI by 35.23% in the second inventory. Similarly, the palm *E. precatoria*, ranked second in IVI, rose from 19.26 to 21.29—an increase of 9.53%—also indicating significant changes in vegetation structure and floristics towards a degraded environment. Collectively, these findings underscore the profound consequences of fire on the plant community, which tends to evolve into a more open formation [28] with a hotter, drier microclimate due to palm dominance in the canopy [66,67].

In addition to the post-fire dominance of palms, which tends to make Amazonian forest formations more open and creates a hotter, drier microclimate [27,28], structural and floristic changes were evident in the tree species composition. For instance, *Sparattosperma leucanthum*—a pioneer species typical of anthropized and successional areas [68]—rose from 8th to 5th in the importance value index (IVI) in the open ombrophilous forest (OF) after the fire. Similarly, *Mezilaurus itauba*, a fire-resistant species characteristic of Amazonian

forests but also found in secondary forests impacted by human activity [68], moved from 34th to 21st in IVI, with one recruit and no recorded mortality. The savanna species *Miconia ferruginata*, typically associated with typical Cerrado sensu stricto [49], followed a similar trend, climbing from 39th to 25th in IVI, with one recruit and no mortality, further suggesting degradation by canopy opening.

Conversely, the small-statured tree *Theobroma speciosum*, a species typical of Amazonian forests and rarely found in disturbed areas [68], maintained a low IVI, showing little structural or floristic influence post-fire. This condition contrasts with fire-adapted palms like *Euterpe precatoria* and *Attalea maripa*, which increased dominance due to their resilience and ability to thrive in disturbed areas. For example, *E. precatoria* demonstrated high recruitment and a rise in IVI, further reinforcing its capacity to withstand fire and dominate post-disturbance scenarios [66].

The impacts of fire extended beyond species composition. Fire-induced mortality, which reached nearly 30% in the ombrophilous forest (OF) and 28% in the transitional forest (TF), caused a negative turnover where mortality far exceeded recruitment. This imbalance signals the onset of a collapse in the natural dynamics of these forest formations, with significant implications for their future structure. Although mortality data for trees < 10 cm in diameter were not collected, it is highly probable that natural regeneration—known to be highly sensitive to fire—suffered even more significant impacts, further jeopardizing the future of these ecosystems [8].

The SF exhibited the lowest fire impact, supporting its higher resilience hypothesis. However, a 9.1% mortality rate was still recorded, higher than typical post-fire levels for fire-resistant vegetation type [69]. While the overall losses in the SF were lower, the high mortality in the TF and OF resulted in the death of 736 individuals across all three areas, 511 of which (~70%) showed clear signs of burning. Scars and heat spots observed after the second fire (2020) in the OF indicate ongoing damage, as fire effects can lead to delayed mortality, particularly in younger trees in smaller diameter classes [64].

The disappearance of flame-sensitive species highlights the severe impact of fire on tree flora in these areas. In forested regions along the Southern Amazon, fire not only causes substantial losses of flame-sensitive species [8,28,62] but also drives significant shifts in regeneration [34] and floristic composition and reduces ecosystem services, such as above- and below-ground carbon storage and climate change mitigation, due to declines in above-ground biomass [8,28]. If disturbances cease, species may recover over time [70,71]. However, if fires persist, these species are likely to experience local extinction, particularly those with restricted geographic ranges, and large-scale fires could exacerbate this process [72–75].

The above-average mortality recorded in the successional forest (SF) can be attributed to the dominance of five Amazon forest species with the highest IVI—*Moquilea egleri*, *Dacryodes microcarpa*, *Caraipa densifolia*, *Bonyunia antoniifolia*, and *Ochthocosmus barrae*—all of which have low fire and drought tolerance [76]. This atypical dominance of Amazonian flora in the SF suggests an ongoing process of savanna-like vegetation replacement by forest, as observed in other Amazon–Cerrado contact zones [37–39].

Fire-induced changes in the regional environment, including increased openness, reduced humidity, and drier conditions [77], could act as additional constraints (e.g., reduced transpiration and xylem embolism) [78,79], particularly as local rainfall diminishes due to extensive deforestation in Southern Amazonia [80]. However, if extreme droughts, regional deforestation, and fires are mitigated, environmental conditions could again support these species, allowing for CE vegetation to continue transitioning into forest. The presence of *Tachigali vulgaris*—a key species in the conversion of savanna to forest [37]—and *Emmotum nitens*, which plays a pivotal role in the densification of Cerrado vegetation in

Amazon–Cerrado ecotones [40], strongly supports this trajectory. Further evidence of this transformation is that nearly 50% of the SF's basal area comprises Amazonian forest species, particularly *M. egleri*, *D. microcarpa*, and *C. densifolia*. However, if current conditions persist, this process may be jeopardized by recurrent wildfires, potentially reversing the transition and driving the SF back toward a savanna-like vegetation state—likely its original condition (sensu [37–39]). Such savannization could expand regionally, impacting SF, TF, and OF formations.

Recurrent fire is uncommon in transitional forests [50,51], making it particularly vulnerable to climate change and fire events [69]. Similarly, natural fires in Amazon forests are rare, typically occurring only over centuries or millennia [21]. The reduction in the Shannon diversity index (H') observed in the SF and OF highlights the significant biodiversity loss caused by fire. These changes, often linked to human activities, such as pasture clearing, deforestation preparation [81], or accidental burns [82,83], reduce tree diversity and increase susceptibility to fire events. Forest moisture usually provides some resistance to fire spread [34], but high-intensity droughts and recurrent fires increasingly compromise this resilience. A second fire within a few years of the first compounds the damage due to accumulated fuel load [83], lower moisture levels, and higher local temperatures coupled with floristic assemblages unadapted to fire [83–87].

High mortality rates in the study areas were expected, as fire often reduces tree numbers, basal area, live biomass, and species richness by causing partial or total population collapse [86]. Fire intensity, frequency, and duration strongly influence the severity of impact [84–86]. Younger and smaller trees are particularly vulnerable, and the likelihood of their disappearance post-fire is high. Recovery in fire-damaged areas can take significant time, while in extreme cases, intense fires may cause a total collapse of local vegetation [88]. Additionally, fire not only directly affects trees but can also cause damage to the soil seed bank [89] and litter layer, further inhibiting regeneration and altering the nutrient cycle.

The second fire in 2020 was more extensive, as indicated by a 54% increase in heat focal points in Mato Grosso from January to November compared to 2019, with August and September being the most critical months [90]. However, the second inventory in 2021 coincided with a year of no fires in the study areas, reflecting a reduction in fire activity confirmed by INPE (2021) data [91]. Heat focal points dropped from 3773 between January and August 2020 to just 344 during the same period in 2021 [92].

One factor exacerbating the mortality rates in TF and OF is the interaction between global climate change and severe drought events, such as the 2015–2016 El Niño [8]. These conditions create drier, hotter environments, further heightening fire vulnerability and resulting in higher mortality rates than typically expected [91,93–95]. Among the 25 species that disappeared across the three study areas, 15 (60%) were directly impacted by fire and could be classified as fire-sensitive [96]. This condition underscores the need for further studies on the combined effects of climate change and fire on tree survival in the region.

Parisien and Moritz [97] emphasize that advancing ecological understanding of fire requires research into its multi-scale impacts—spatially, from local to biome levels, and temporally, from short to long term. These data are critical for informing public policies that mitigate losses while maximizing ecological, cultural, and economic benefits. We support this perspective and highlight the importance of integrating spatial and temporal scales to better understand fire's exponential impact on Amazon forest composition and structure. Under current socioeconomic pressures driving deforestation and illegal burns, the Amazon risks are reaching a tipping point [98]. Such research is also essential for quantifying CO₂ emissions from Amazonian degradation and understanding their broader climatic consequences.

5. Conclusions

Significant reductions in species diversity in transitional forest (TF) and open ombrophilous forest (OF) are driven by high mortality and low recruitment, revealing a collapse in vegetation dynamics caused by recurrent fires. The high mortality observed in the smallest diameter class underscores a critical failure to replace older generations, jeopardizing these communities' future structure and floristic composition. Although pristine Amazonian forests typically inhibit fire spread due to higher humidity and less accumulated fuel load, they remain less resilient and struggle to recover from successive fires—a condition similar to that observed in TF. In contrast, the successional forest (SF) exhibits greater resilience and lower mortality rates.

Given this scenario, continued forest inventories are essential for monitoring the conservation status of these vegetation types, especially considering the presence of rare species. The data suggest a fire vulnerability feedback loop that may accelerate the degradation of OF and TG, increasing the fire-induction risk of forest secundarization along the Amazon agricultural frontier. Therefore, urgent measures and effective public policies to prevent and combat forest fires are necessary to avoid pushing these ecosystems toward a critical tipping point, exacerbated by the combined impacts of recurrent fires, global climate change, and localized climatic alterations.

Supplementary Materials: The following supporting information can be downloaded at: <https://www.mdpi.com/article/10.3390/f16081218/s1>.

Author Contributions: Conceptualization, L.G.d.R., B.H.M.J., A.d.C.B. and M.A.C.d.C.; methodology, B.S.M., C.R.A.S., M.L.G., J.A.d.R.F. and C.E.J.; software, E.A.T.M.; validation, G.H.P.d.M.R., E.A.d.O., F.E., E.A.T.M. and D.G.; formal analysis L.G.d.R., B.H.M.J., G.H.P.d.M.R., A.d.C.B. and M.A.C.d.C.; investigation, D.R.d.S., M.Z., E.S.M. and S.C.d.O.D.; resources, B.H.M.J. and M.A.C.d.C.; data curation, M.A.C.d.C., B.S.M. and C.R.A.S.; writing—original draft preparation, L.G.d.R., B.H.M.J., A.d.C.B. and M.A.C.d.C.; writing—review and editing, B.H.M.J., O.L.P., G.H.P.d.M.R., T.R.F., D.G. and I.O.; visualization, D.G. and I.O.; supervision, B.H.M.J.; project administration, B.H.M.J., B.S.M. and O.L.P.; funding acquisition, G.H.P.d.M.R., B.H.M.J., B.S.M. and O.L.P. All authors have read and agreed to the published version of the manuscript.

Funding: This research was financially supported by the Brazilian National Council of Science and Technology (CNPq/PELD 441572/202-0), Foundation for Research Support of the State of Mato Grosso and Rainfor Network (CNPq/FAPEMAT/Rainfor 0346321/2021).

Data Availability Statement: The data supporting the findings of this study can be obtained from <https://forestplots.net/en> and the corresponding author upon request.

Acknowledgments: We thank the Brazilian National Council of Science and Technology (CNPq) for the CNPq/PPBio project (457602); productivity grants PQ-1 to B.H. Marimon-Junior and B.S. Marimon (311027/2019-9-441572/2020-0); CNPq/PELD Etapa IV (LTER) (441244/2016-5-441572/2020-0) and Foundation for Research Support of the State of Mato Grosso for the Project ReFlor (FAPEMAT 0589267/2016) and PELD-FAPEMAT Etapa IV (0346321/2021).

Conflicts of Interest: The authors declare no conflicts of interest. The funders were not involved in the study design, data collection, analyses, or interpretation; the writing of the manuscript; or the decision to publish the findings.

References

1. Barlow, J.; Berenguer, E.; Carmenta, R.; França, F. Clarifying Amazonia's Burning Crisis. *Glob. Change Biol.* **2020**, *26*, 319–321. [[CrossRef](#)] [[PubMed](#)]
2. Libonati, R.; DaCamara, C.C.; Peres, L.F.; Sander De Carvalho, L.A.; Garcia, L.C. Rescue Brazil's Burning Pantanal Wetlands. *Nature* **2020**, *588*, 217–219. [[CrossRef](#)] [[PubMed](#)]

3. Alencar, A.A.; Brando, P.M.; Asner, G.P.; Putz, F.E. Landscape fragmentation, severe drought, and the new Amazon forest fire regime. *Ecol. Appl.* **2015**, *25*, 1493–1505. [CrossRef] [PubMed]
4. Sullivan, M.J.; Lewis, S.L.; Affum-Baffoe, K.; Castilho, C.; Costa, F.; Sanchez, A.C.; Ewango, C.E.N.; Hubau, W.; Marimon, B.; Monteagudo-Mendoza, A.; et al. Long-Term Thermal Sensitivity of Earth's Tropical Forests. *Science* **2020**, *368*, 869–874. [CrossRef] [PubMed]
5. Marengo, J.A.; Jimenez, J.C.; Espinoza, J.-C.; Cunha, A.P.; Aragão, L.E.O. Increased Climate Pressure on the Agricultural Frontier in the Eastern Amazonia–Cerrado Transition Zone. *Sci. Rep.* **2022**, *12*, 457. [CrossRef] [PubMed]
6. Silvério, D.; Silva, S.; Alencar, A.; Moutinho, P. Amazônia em Chamas; Nota Técnica no. 12/Instituto de Pesquisa Ambiental da Amazônia–IPAM. IPAM Amaz. **2019**. Available online: https://ipam.org.br/wp-content/uploads/2024/06/Amazonia-em-Chamas-12_v01.pdf (accessed on 18 September 2024).
7. Burton, C.; Rifai, S.; Malhi, Y. Intercomparison and Evaluation of Gridded Climate Products over Tropical Forests during the 2015/2016 El Niño. *Philos. Trans. R. Soc. B Biol. Sci.* **2018**, *373*, 20170406. [CrossRef] [PubMed]
8. Berenguer, E.; Lennox, G.D.; Ferreira, J.; Malhi, Y.; Aragão, L.E.O.C.; Barreto, J.R.; Del Bon Espírito-Santo, F.; Figueiredo, A.E.S.; França, F.; Gardner, T.A.; et al. Tracking the Impacts of El Niño Drought and Fire in Human-Modified Amazonian Forests. *Proc. Natl. Acad. Sci. USA* **2021**, *118*, e2019377118. [CrossRef] [PubMed]
9. Esquivel-Muelbert, A.; Phillips, O.L.; Brien, R.J.W.; Fauset, S.; Sullivan, M.J.P.; Baker, T.R.; Chao, K.-J.; Feldpausch, T.R.; Gloor, E.; Higuchi, N.; et al. Tree Mode of Death and Mortality Risk Factors across Amazon Forests. *Nat. Commun.* **2020**, *11*, 5515. [CrossRef] [PubMed]
10. Reis, S.M.; Marimon, B.S.; Esquivel-Muelbert, A.; Marimon, B.H., Jr.; Morandi, P.S.; Elias, F.; Phillips, O.L. Climate and Crown Damage Drive Tree Mortality in Southern Amazonian Edge Forests. *J. Ecol.* **2022**, *110*, 876–888. [CrossRef]
11. Brasil. Projeto RADAMBRASIL: Folha SC. 20 Purus; Geologia, Geomorfologia, Pedologia, Vegetação e Uso Potencial da Terra; Ministério das Minas e Energia, Departamento Nacional de Produção Mineral: Rio de Janeiro, Brazil, 1978.
12. Marques, E.Q.; Marimon-Junior, B.H.; Marimon, B.S.; Matricardi, E.A.T.; Mews, H.A.; Colli, G.R. Redefining the Cerrado–Amazonia Transition: Implications for Conservation. *Biodivers Conserv.* **2020**, *29*, 1501–1517. [CrossRef]
13. Marimon-Junior, B.H.; Haridasan, M. Comparação da Vegetação Arbórea e Características Edáficas de um Cerradão e um Cerrado sensu stricto em Áreas Adjacentes sobre Solo Distrófico no Leste de Mato Grosso, Brasil. *Acta Bot. Bras.* **2005**, *19*, 913–926. [CrossRef]
14. Silveira, M.V.F.; Petri, C.A.; Broggio, I.S.; Chagas, G.O.; Macul, M.S.; Leite, C.C.S.S.; Ferrari, E.M.M.; Amim, C.G.V.; Freitas, A.L.R.; Motta, A.Z.V.; et al. Drivers of Fire Anomalies in the Brazilian Amazon: Lessons Learned from the 2019 Fire Crisis. *Land* **2020**, *9*, 516. [CrossRef]
15. Ferreira Barbosa, M.L.; Delgado, R.C.; Forsad de Andrade, C.; Teodoro, P.E.; Silva Junior, C.A.; Wanderley, H.S.; Capristo-Silva, G.F. Recent Trends in the Fire Dynamics in Brazilian Legal Amazon: Interaction between the ENSO Phenomenon, Climate and Land Use. *Environ. Dev.* **2021**, *39*, 100648. [CrossRef]
16. Deutsch, S.; Fletcher, R. The 'Bolsonaro Bridge': Violence, Visibility, and the 2019 Amazon Fires. *Environ. Sci. Policy* **2022**, *132*, 60–68. [CrossRef]
17. Chaves, M.E.D.; Mataveli, G.; Conceição, K.V.; Adami, M.; Petrone, F.G.; Sanches, I.D. AMACRO: The Newer Amazonia Deforestation Hotspot and a Potential Setback for Brazilian Agriculture. *Perspect. Ecol. Conserv.* **2024**, *22*, 93–100. [CrossRef]
18. Ribeiro, A.F.S.; Santos, L.; Randerson, J.T.; Uribe, M.R.; Alencar, A.A.C.; Macedo, M.N.; Morton, D.C.; Zscheischler, J.; Silvestrini, R.A.; Rattis, L.; et al. The Time since Land-Use Transition Drives Changes in Fire Activity in the Amazon–Cerrado Region. *Commun. Earth Environ.* **2024**, *5*, 96. [CrossRef]
19. Oliveira, A.S.; Soares-Filho, B.S.; Oliveira, U.; Van der Hoff, R.; Carvalho-Ribeiro, S.M.; Oliveira, A.R.; Scheepers, L.C.; Vargas, B.A.; Rajão, R.G. Costs and effectiveness of public and private fire management programs in the Brazilian Amazon and Cerrado. *Forest Policy Econ.* **2021**, *127*, e102447. [CrossRef]
20. Feldpausch, T.R.; Carvalho, L.; Macario, K.D.; Ascough, P.L.; Flores, C.F.; Coronado, E.N.H.; Kalamandeen, M.; Phillips, O.L.; Staff, R.A. Forest Fire History in Amazonia Inferred from Intensive Soil Charcoal Sampling and Radiocarbon Dating. *Front. For. Glob. Change* **2022**, *5*, e815438. [CrossRef]
21. Silva Arruda, V.L.; Alencar, A.A.C.; Carvalho Júnior, O.A.; de Figueiredo Ribeiro, F.; de Arruda, F.V.; Conciani, D.E.; da Silva, W.V. Assessing four decades of fire behavior dynamics in the Cerrado biome (1985 to 2022). *Fire Ecol.* **2024**, *20*, e64. [CrossRef]
22. França, H.; Neto, M.B.R.; Setzer, A.W. *O Fogo no Parque Nacional das Emas*; Ministério do Meio Ambiente: Brasília, Brazil, 2007.
23. França, H. Metodologia de Identificação e Quantificação de Áreas Queimadas no Cerrado com Imagens AVHRR/NOAA. Ph.D. Thesis, Universidade de São Paulo, São Paulo, Brazil, 1999; p. 133.
24. Ramos-Neto, M.B.; Pivello, V.R. Lightning Fires in a Brazilian Savanna National Park: Rethinking Management Strategies. *Environ. Manage.* **2000**, *26*, 675–684. [CrossRef] [PubMed]

25. Oliveira, C.P.; Francelino, M.R.; Daher, M.; Leles, P.S.D.S.; de Andrade, F.C. Comparação de Modelos Estatísticos para Estimativa da Biomassa de Árvores, e Estimativa do Estoque de Carbono acima do Solo em Cerrado. *Ciênc. Florest.* **2019**, *29*, 255–269. [CrossRef]
26. Boulton, C.A.; Lenton, T.M.; Boers, N. Pronounced Loss of Amazon Rainforest Resilience since the Early 2000s. *Nat. Clim. Change* **2022**, *12*, 271–278. [CrossRef]
27. Barlow, J.; Haugaasen, T.; Peres, C.A. Effects of Ground Fires on Understorey Bird Assemblages in Amazonian Forests. *Biol. Conserv.* **2002**, *105*, 157–169. [CrossRef]
28. Pereira, M.B.; Elias, F.; Teixeira, N.D.A.; Feldpausch, T.; Marimon-Junior, B.H.; Marimon, B.S. Post-Fire Changes in Tree Diversity, Composition and Carbon in Seasonal Forests in the Southern Amazonia. *For. Ecol. Manag.* **2025**, *578*, e122447. [CrossRef]
29. Barlow, J.; Peres, C.A. Effects of Single and Recurrent Wildfires on Fruit Production and Large Vertebrate Abundance in a Central Amazonian Forest. *Biodivers. Conserv.* **2006**, *15*, 985–1012. [CrossRef]
30. Barlow, J.; Peres, C.A. Fire-Mediated Dieback and Compositional Cascade in an Amazonian Forest. *Phil. Trans. R. Soc. B* **2008**, *363*, 1787–1794. [CrossRef] [PubMed]
31. Góes-Neto, A.; Saliba, A.; Lopes, D. *Coleção Desafios Globais*, 1st ed.; UFMG: Belo Horizonte, MG, Brazil, 2021; Volume 2, p. 37.
32. Vedovato, L.B.; Aragão, L.E.O.C.; Almeida, D.R.A.; Bartholomew, D.C.; Assis, M.; Dalagnol, R.; Gorgens, E.B.; Silva-Junior, C.H.L.; Ometto, J.P.; Pontes-Lopes, A.; et al. Impacts of Fire on Canopy Structure and Its Resilience Depend on Successional Stage in Amazonian Secondary Forests. *Remote Sens. Ecol. Conserv.* **2025**, *363*, 1787–1794. [CrossRef]
33. Lapola, D.M.; Pinho, P.; Barlow, J.; Aragão, L.E.O.C.; Berenguer, E.; Carmenta, R.; Liddy, H.M.; Seixas, H.; Silva, C.V.J.; Silva-Junior, C.H.L.; et al. The Drivers and Impacts of Amazon Forest Degradation. *Science* **2023**, *379*, eabp8622. [CrossRef] [PubMed]
34. Nepstad, D.; Lefebvre, P.; Silva, U.L.; Tomasella, J.; Schlesinger, P.; Solórzano, L.; Moutinho, P.; Ray, D.; Benito, J.G. Amazon Drought and Its Implications for Forest Flammability and Tree Growth: A Basin-Wide Analysis. *Glob. Change Biol.* **2004**, *10*, 704–717. [CrossRef]
35. Prestes, N.C.C.D.S.; Massi, K.G.; Silva, E.A.; Nogueira, D.S.; de Oliveira, E.A.; Freitag, R.; Marimon, B.S.; Marimon-Junior, B.H.; Keller, M.; Feldpausch, T.R. Fire Effects on Understory Forest Regeneration in Southern Amazonia. *Front. For. Glob. Change* **2020**, *3*, e10. [CrossRef]
36. Cochrane, M.A.; Laurance, W.F. Fire as a Large-Scale Edge Effect in Amazonian Forests. *J. Trop. Ecol.* **2002**, *18*, 311–325. [CrossRef]
37. Marimon, B.S.; Lima, E.S.; Duarte, T.G.; Chieregatto, L.C.; Ratter, J.A. Observations on the Vegetation of Northeastern Mato Grosso, Brazil. IV. An Analysis of the Cerrado–Amazonian Forest Ecotone. *Edinb. J. Bot.* **2006**, *63*, 323–341. [CrossRef]
38. Morandi, P.S.; Marimon-Junior, B.H.; Oliveira, E.A.; Reis, S.M.; Xavier Valadão, M.B.; Forsthofer, M.; Passos, F.B.; Marimon, B.S. Vegetation Succession in the Cerrado–Amazonian Forest Transition Zone of Mato Grosso State, Brazil. *Edinb. J. Bot.* **2016**, *73*, 83–93. [CrossRef]
39. Passos, F.B.; Marimon, B.S.; Phillips, O.L.; Morandi, P.S.; das Neves, E.C.; Elias, F.; Marimon Junior, B.H. Savanna Turning into Forest: Concerted Vegetation Change at the Ecotone between the Amazon and “Cerrado” Biomes. *Braz. J. Bot.* **2018**, *41*, 611–619. [CrossRef]
40. Elias, F.; Marimon Junior, B.H.; de Oliveira, F.J.M.; de Oliveira, J.C.A.; Marimon, B.S. Soil and Topographic Variation as a Key Factor Driving the Distribution of Tree Flora in the Amazonia/Cerrado Transition. *Acta Oecologica* **2019**, *100*, 103467. [CrossRef]
41. Nogueira, D.S.; Marimon, B.S.; Marimon-Junior, B.H.; de Oliveira, E.A.; Morandi, P.; Reis, S.M.; Elias, F.; Neves, E.C.; Feldpausch, T.R.; Lloyd, J.; et al. Impacts of Fire on Forest Biomass Dynamics at the Southern Amazon Edge. *Environ. Conserv.* **2019**, *46*, 285–292. [CrossRef]
42. Guedes, D.M. Resistência das Árvores do Cerrado ao Fogo: Papel da Casca como Isolante Térmico. Master’s Thesis, Universidade de Brasília, Brasília, Brazil, 1993; p. 113.
43. Coutinho, L.M. Fire in the Ecology of the Brazilian Cerrado. In *Fire in the Tropical Biota*; Goldammer, J.G., Ed.; Springer: Berlin, Germany, 1990; pp. 82–105.
44. Caioni, C.; Caioni, S.; Silva, A.C.; Parente, T.; Araújo. Analysis of Rainfall Distribution and the Occurrence of the El Niño Phenomenon in the Municipality of Alta Floresta-MT. *Enciclop. Biosf.* **2014**, *10*, e2655.
45. Zortea, M. Determinantes Ambientais de Vegetação Savânica e Florestal em Enclaves de Cerrado na Amazônia Mato-Grossense. 2018. Available online: <https://portal.unemat.br/media/files/MARCELO%20ZORTEA.pdf> (accessed on 16 January 2022).
46. Ab’Sáber, A.N. *Os Domínios de Natureza no Brasil: Potencialidades Paisagísticas*, 3rd ed.; Ateliê Editorial: São Paulo, Brazil, 2003; p. 159.
47. Miranda, I.S.; Almeida, S.S.; Dantas, P.J. Florística e Estrutura de Comunidades Arbóreas em Cerrados de Rondônia, Brasil. *Acta Amaz.* **2006**, *36*, 419–430. [CrossRef]
48. Barradas, A.C. Ciclagem de Nutrientes e Estoque de Carbono em Floresta Ombrófila na Amazônia Meridional. Master’s Thesis, Universidade do Estado de Mato Grosso, Alta Floresta, MT, Brazil, 2020.
49. Ratter, J.A.; Bridgewater, S.; Ribeiro, J.F. Analysis of the Floristic Composition of the Brazilian Cerrado Vegetation III: Comparison of the Woody Vegetation of 376 Areas. *Edinb. J. Bot.* **2003**, *60*, 57–109. [CrossRef]

50. Ribeiro, J.F.; Walter, B.M.T. As Principais Fitofisionomias do Bioma Cerrado. In *Cerrado: Ecologia e Flora*; Sano, S.M., Almeida, S.P., Ribeiro, J.F., Eds.; Embrapa: Brasília, Brazil, 2008; Volume 1, pp. 152–212.
51. Ratter, J.A. Some Notes on Two Types of Cerradão Occurring in Northeastern Mato Grosso. In *III Simpósio Sobre o Cerrado*; Ferri, M.G., Ed.; EDUSP/Edgard Blücher: São Paulo, Brazil, 1971; pp. 110–112.
52. Ratter, J.A.; Richards, P.W.; Argent, G.; Gifford, D.R. Observations on the Vegetation of the Northeastern Mato Grosso I. The Woody Vegetation Types of the Xavantina-Cachimbo Expedition Area. *Philos. Trans. R. Soc. B* **1973**, *266*, 449–492.
53. Ratter, J.A.; Askew, G.P.; Montgomery, R.F.; Gifford, D.R. Observações Adicionais sobre o Cerradão de Solos Mesotróficos no Brasil Central. In *IV Simpósio Sobre o Cerrado: Bases para a Utilização Agropecuária*; Ferri, M.G., Ed.; EDUSP: São Paulo, Brazil, 1977; pp. 303–316.
54. Haridasan, M.; de Araújo, G.M. Aluminium-Accumulating Species in Two Forest Communities in the Cerrado Region of Central Brazil. *For. Ecol. Manag.* **1988**, *24*, 15–26. [[CrossRef](#)]
55. Instituto Brasileiro de Geografia e Estatística (IBGE). *Manual Técnico da Vegetação Brasileira*, 2nd ed.; IBGE: Rio de Janeiro, Brazil, 2005. Available online: <https://biblioteca.ibge.gov.br> (accessed on 24 July 2022).
56. Acre. Governo do Estado do Acre. *Programa Estadual de Zoneamento Ecológico Econômico do Estado do Acre, Fase II*; Escala 1:250,000; SEMA: Rio Branco, Brazil, 2006; p. 356.
57. Ribeiro, R.J.; Higuchi, N.; Santos, J.D.; de Azevedo, C.P. Estudo Fitossociológico nas Regiões de Carajás e Marabá-Pará, Brasil. *Acta Amaz.* **1999**, *29*, 207–222. [[CrossRef](#)]
58. Phillips, O.; Baker, T.; Feldpausch, T.; Brien, R. Field Manual for Plot Establishment and Remeasurement. Available online: https://forestplots.net/upload/manualsenglish/rainfor_field_manual_en.pdf (accessed on 12 June 2020).
59. Müller-Dombois, D.; Ellenberg, H. *Aims and Methods of Vegetation Ecology*; J. Wiley & Sons: New York, NY, USA, 1974.
60. Kitajima, K.; Poorter, L. Functional basis for resource niche partitioning by tropical trees. In *Tropical Forest Community Ecology*; Carson, W.P., Schnitzer, S.A., Eds.; Blackwell: Hoboken, NJ, USA, 2008; pp. 160–181.
61. Lugo, A.E.; Scatena, F.N. Background and Catastrophic Tree Mortality in Tropical Moist, Wet, and Rain Forests. *Biotropica* **1996**, *28*, 585–599. [[CrossRef](#)]
62. Barlow, J.; Peres, C.A.; Logan, B.O.; Haugaasen, T. Large Tree Mortality and the Decline of Forest Biomass Following Amazonian Wildfires. *Ecol. Lett.* **2003**, *6*, 6–8. [[CrossRef](#)]
63. Gomes, L.; Miranda, H.S.; Bustamante, M.M.C. How Can We Advance the Knowledge on the Behavior and Effects of Fire in the Cerrado Biome? *For. Ecol. Manage.* **2018**, *417*, 281–290. [[CrossRef](#)]
64. Hoffmann, W.A.; Adasme, R.; Haridasan, M.; Carvalho, M.T.; Geiger, E.L.; Pereira, M.A.B.; Gotsch, S.G.; Franco, A.C. Tree Topkill, Not Mortality, Governs the Dynamics of Savanna-Forest Boundaries under Frequent Fire in Central Brazil. *Ecology* **2009**, *90*, 1326–1337. [[CrossRef](#)] [[PubMed](#)]
65. Santos, P.F.; Tng, D.Y.P.; Garcia, P.O.; Santos, R.; Morel, J.D.; Benicio, M.H.; Apgaua, D.M.G. Temporal Changes in Tree Community Structure and Richness in a Seasonally Dry Tropical Forest in Minas Gerais, Southeastern Brazil. *Bosque* **2017**, *38*, 537–545. [[CrossRef](#)]
66. Liesenfeld, M.V.A. Revealing the Impact of Understory Fires on Stem Survival in Palms (Arecaceae): An Experimental Approach Using Predictive Models. *Fire* **2025**, *8*, 2. [[CrossRef](#)]
67. Whitmore, T.C. Canopy Gaps and Two Major Groups of Forest Trees. *Ecology* **1989**, *70*, 536–538. [[CrossRef](#)]
68. Flora e Funga do Brasil. Jardim Botânico do Rio de Janeiro. Available online: <http://floradobrasil.jbrj.gov.br/> (accessed on 24 January 2024).
69. da Silva Rios, M.N.; Souza-Silva, J.C.; Meirelles, M.L. Dinâmica Pós-Fogo da Vegetação Arbóreo-Arbustiva em Cerrado sensu stricto no Distrito Federal. *Biodiversidade* **2019**, *18*, 2–17.
70. White, P.S. Pattern, process, and natural disturbance in vegetation. *Bot. Rev.* **1979**, *45*, 229–299. [[CrossRef](#)]
71. Moreira, A.G. Effects of Fire Protection on Savanna Structure in Central Brazil. *J. Biogeogr.* **2000**, *27*, 1021–1029. [[CrossRef](#)]
72. Libano, A.M.; Felfili, J.M. Temporal Changes in the Floristic Composition and Diversity of a Cerrado sensu stricto in Central Brazil over an 18-Year Period (1985–2003). *Acta Bot. Bras.* **2006**, *20*, 927–936. [[CrossRef](#)]
73. Sato, M.N.; Miranda, H.S. Mortalidade de Plantas Lenhosas do Cerrado sensu stricto Submetidas a Diferentes Regimes de Queima. In *Impactos de Queimadas em Áreas de Cerrado e Restinga*; Miranda, H.S., Saito, C.H., Dias, B.F.S., Eds.; ECL/UnB: Brasília, Brazil, 1996; pp. 102–111.
74. Abreu, L.d.O.; Ribeiro, J.P. Impactos das Queimadas na Fauna Brasileira. Available online: <https://doity.com.br/anais/conexaounifametro2020/trabalho/169064\T1\textgreater{}> (accessed on 10 March 2023).
75. Vieira, I.C.G.; Toledo, P.M.; Silva, J.M.C.; Higuchi, H. Deforestation and threats to the biodiversity of Amazonia. *Braz. J. Biol.* **2008**, *68*, 949–956. [[CrossRef](#)] [[PubMed](#)]
76. Kinsman, S. Regeneration by Fragmentation in Tropical Montane Forest Shrubs. *Am. J. Bot.* **1990**, *77*, 1626–1633. [[CrossRef](#)]
77. Mesquita, A.G.G. Impactos das Queimadas sobre o Ambiente e a Biodiversidade Acreana. *Rev. Ramal Ideias* **2008**, *1*, 2008–2009.

78. Pittermann, J. The Evolution of Water Transport in Plants: An Integrated Approach. *Geobiology* **2010**, *8*, 112–139. [[CrossRef](#)] [[PubMed](#)]
79. Jingmin, L.; Chong, L.; Zheng, X.; Kaiping, Z.; Xue, K.; Liding, W. A Microfluidic Pump/Valve Inspired by Xylem Embolism and Transpiration in Plants. *PLoS ONE* **2012**, *7*, e50320. [[CrossRef](#)] [[PubMed](#)]
80. Bonini, I. Transição Amazônia-Cerrado: Desmatamento e Colapso do Ciclo Hidrológico. Ph.D. Thesis, Universidade do Estado de Mato Grosso, Nova Xavantina, MT, Brazil, 2019.
81. Leite-Filho, A.T.; Soares-Filho, B.S.; Davis, J.L.; Abrahão, G.M.; Börner, J. Deforestation reduces rainfall and agricultural revenues in the Brazilian Amazon. *Nat. Comm.* **2021**, *12*, e2591. [[CrossRef](#)] [[PubMed](#)]
82. Feng, X.; Merow, C.; Liu, Z.; Park, D.S.; Roehrdanz, P.R.; Maitner, B.; Newman, E.A.; Boyle, B.L.; Lien, A.; Burger, J.R.; et al. How deregulation, drought and increasing fire impact Amazonian biodiversity. *Nature* **2021**, *597*, 516–521. [[CrossRef](#)] [[PubMed](#)]
83. Anderson, L.O.; Marchezini, V.; Morello, T.F.; Cunningham, T.A. Conceptual Model of a Risk Alert and Disaster Management System Associated with Forest Fires and Challenges for Public Policies in Brazil. *Territorium* **2019**, *26*, 43–61. [[CrossRef](#)] [[PubMed](#)]
84. Hao, B.; Xu, X.; Wu, F.; Tan, L. Long-Term Effects of Fire Severity and Climatic Factors on Post-Forest-Fire Vegetation Recovery. *Forests* **2022**, *13*, 883. [[CrossRef](#)]
85. Uhl, C.; Kauffman, J.B.; Silva, E.D. Os Caminhos do Fogo na Amazônia. *Ciênc. Hoje* **1990**, *11*, 25–32.
86. Cochrane, M.A. Fire Science for Rainforests. *Nature* **2003**, *421*, 913–919. [[CrossRef](#)] [[PubMed](#)]
87. Silva, V.F.; Oliveira Filho, A.T.; Venturin, N.; Carvalho, W.A.C.; Gomes, J.B.V. Impacto do Fogo no Componente Arbóreo de uma Floresta Estacional Semidecídua no Município de Ibituruna, MG, Brasil. *Acta Bot. Bras.* **2005**, *19*, 701–716. [[CrossRef](#)]
88. Fearnside, P.M. Deforestation in the Brazilian Amazon: History, Rates, and Consequences. *Megadiversidade* **2005**, *1*, 113–123.
89. Lamont, B.B.; Witkowski, E.T.F.; Enright, N.J. Post-Fire Litter Microsites: Safe for Seeds, Unsafe for Seedlings. *Ecology* **1993**, *74*, 501–512. [[CrossRef](#)]
90. Rosot, N.C.; Dlugosz, F.L.; Rosot, M.A.D.; Kurasz, G.; de Oliveira, Y.M.M. Ações de Recuperação em Área Degradada por Fogo em Floresta Ombrófila Mista: Resultados Parciais. *Pesq. Flor. Bras.* **2007**, *55*, 23–30.
91. Celestino, C. 2021-Dados do Inpe Apontam Redução de 90,8% nos Focos de Calor no Pantanal entre 2020 e 2021. Available online: <http://www.mt.gov.br/-/17799841-dados-do-inpe-apontam-reducao-de-90-8-nos-focos-de-calor-no-pantanal-entre-2020-e-2021> (accessed on 19 February 2022).
92. Silgueiro, V.; Valdiones, A.P.; Bernasconi, P. *Balanco dos Incêndios em Mato Grosso em 2020*; Instituto Centro Vida–ICV: Mato Grosso, Brazil, 2020. Available online: <https://www.icv.org.br/publicacao/balanco-dos-incendios-em-mato-grosso-em-2020/> (accessed on 26 August 2022).
93. Hooper, E.R.; Legendre, P.; Condit, R. Factors Affecting Community Composition of Forest Regeneration in Deforested, Abandoned Land in Panama. *Ecology* **2004**, *85*, 3313–3326. [[CrossRef](#)]
94. Nepstad, D.; Carvalho, G.; Barros, A.C.; Alencar, A.; Capobianco, J.P.; Bishop, J.; Moutinho, P.; Lefebvre, P.; Silva, U.L.; Prins, E. Road paving, fire regime feedbacks, and the future of Amazon forests. *For. Ecol. Man.* **2001**, *154*, 395–407. [[CrossRef](#)]
95. Staal, A.F.; Flores, B.M.; Aguiar, A.P.D.; Bosmans, J.H.C.; Fetzer, I.; Tuinenburg, O.A. Feedback between drought and deforestation in the Amazon. *Environ. Res. Lett.* **2020**, *15*, 044024. [[CrossRef](#)]
96. Davidson, E.A.; de Araújo, A.C.; Artaxo, P.; Balch, J.K.; Brown, I.F.; Bustamante, M.M.C.; Coe, M.T.; DeFries, R.S.; Keller, M.; Longo, M.; et al. The Amazon basin in transition. *Nature* **2012**, *481*, 321–328. [[CrossRef](#)] [[PubMed](#)]
97. Parisien, M.; Moritz, M.A. Environmental controls on the distribution of wildfire at multiple spatial scales. *Ecol. Monogr.* **2009**, *79*, 127–154. [[CrossRef](#)]
98. Lovejoy, T.; Nobre, C.N. Amazon tipping point: Last chance for action. *Sci. Adv.* **2019**, *5*, eaba2949. [[CrossRef](#)] [[PubMed](#)]

Disclaimer/Publisher’s Note: The statements, opinions and data contained in all publications are solely those of the individual author(s) and contributor(s) and not of MDPI and/or the editor(s). MDPI and/or the editor(s) disclaim responsibility for any injury to people or property resulting from any ideas, methods, instructions or products referred to in the content.