



UNIVERSITY OF LEEDS

This is a repository copy of *Rapid establishment and impact assessment of the Redclaw crayfish (Cherax quadricarinatus) invasion in the Kruger National Park, South Africa.*

White Rose Research Online URL for this paper:

<https://eprints.whiterose.ac.uk/228416/>

Version: Supplemental Material

---

**Article:**

South, J. orcid.org/0000-0002-6339-4225, Stubbington, O., Kaiser-Reichel, A. et al. (8 more authors) (Accepted: 2025) Rapid establishment and impact assessment of the Redclaw crayfish (*Cherax quadricarinatus*) invasion in the Kruger National Park, South Africa. *Aquatic Conservation: Marine and Freshwater Ecosystems*. ISSN 1052-7613 (In Press)

---

This is an author produced version of an article accepted for publication in *Marine and Freshwater Ecosystems*, made available under the terms of the Creative Commons Attribution License (CC-BY), which permits unrestricted use, distribution and reproduction in any medium, provided the original work is properly cited.

**Reuse**

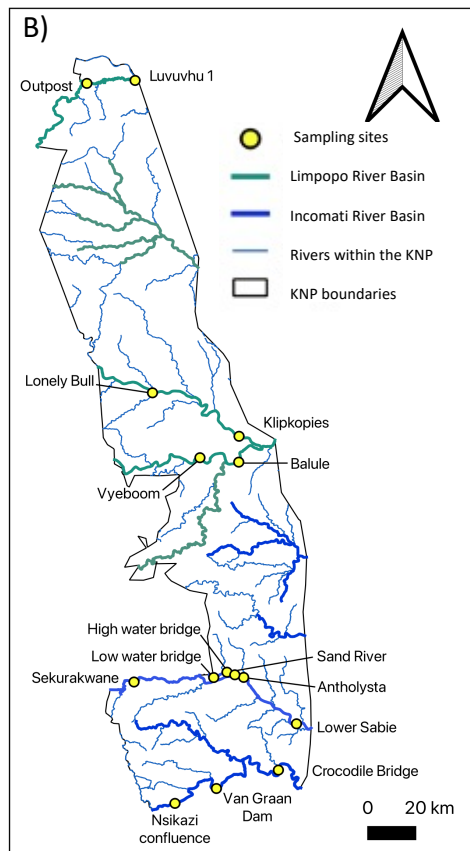
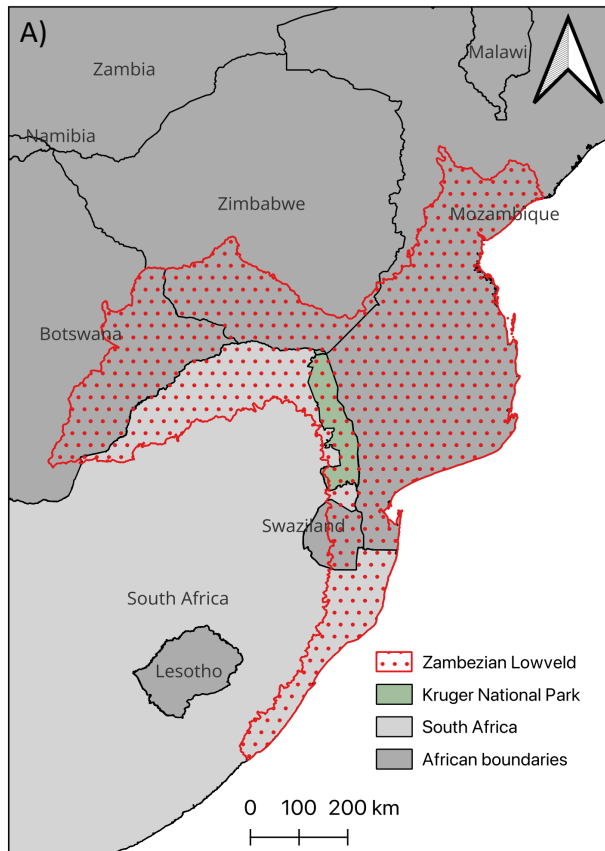
Items deposited in White Rose Research Online are protected by copyright, with all rights reserved unless indicated otherwise. They may be downloaded and/or printed for private study, or other acts as permitted by national copyright laws. The publisher or other rights holders may allow further reproduction and re-use of the full text version. This is indicated by the licence information on the White Rose Research Online record for the item.

**Takedown**

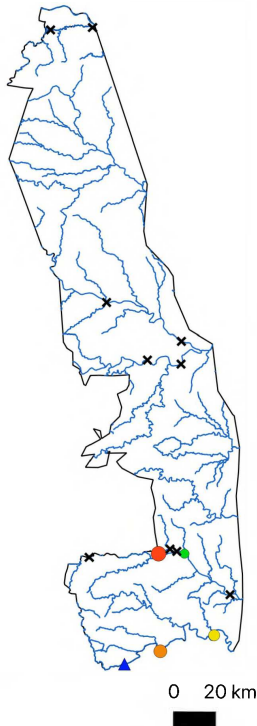
If you consider content in White Rose Research Online to be in breach of UK law, please notify us by emailing [eprints@whiterose.ac.uk](mailto:eprints@whiterose.ac.uk) including the URL of the record and the reason for the withdrawal request.



[eprints@whiterose.ac.uk](mailto:eprints@whiterose.ac.uk)  
<https://eprints.whiterose.ac.uk/>



A)

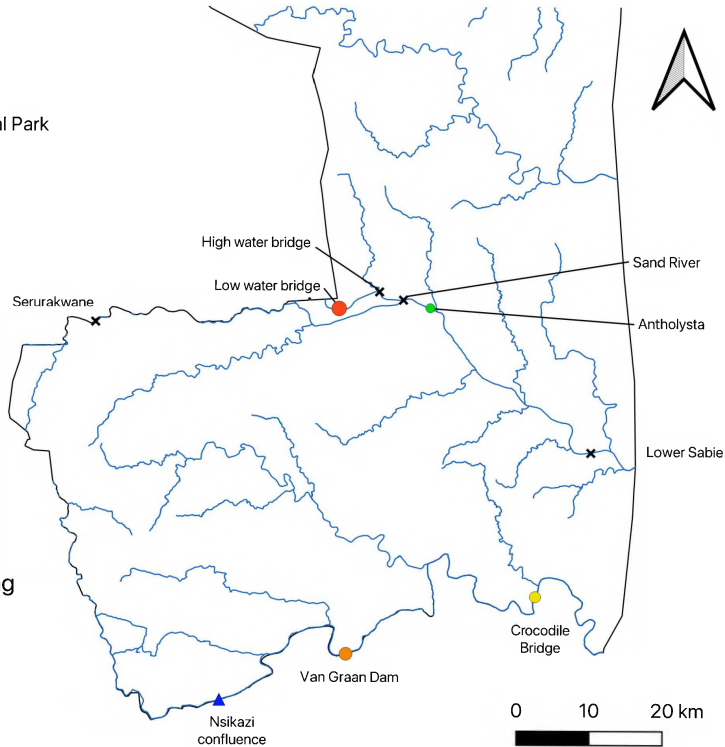


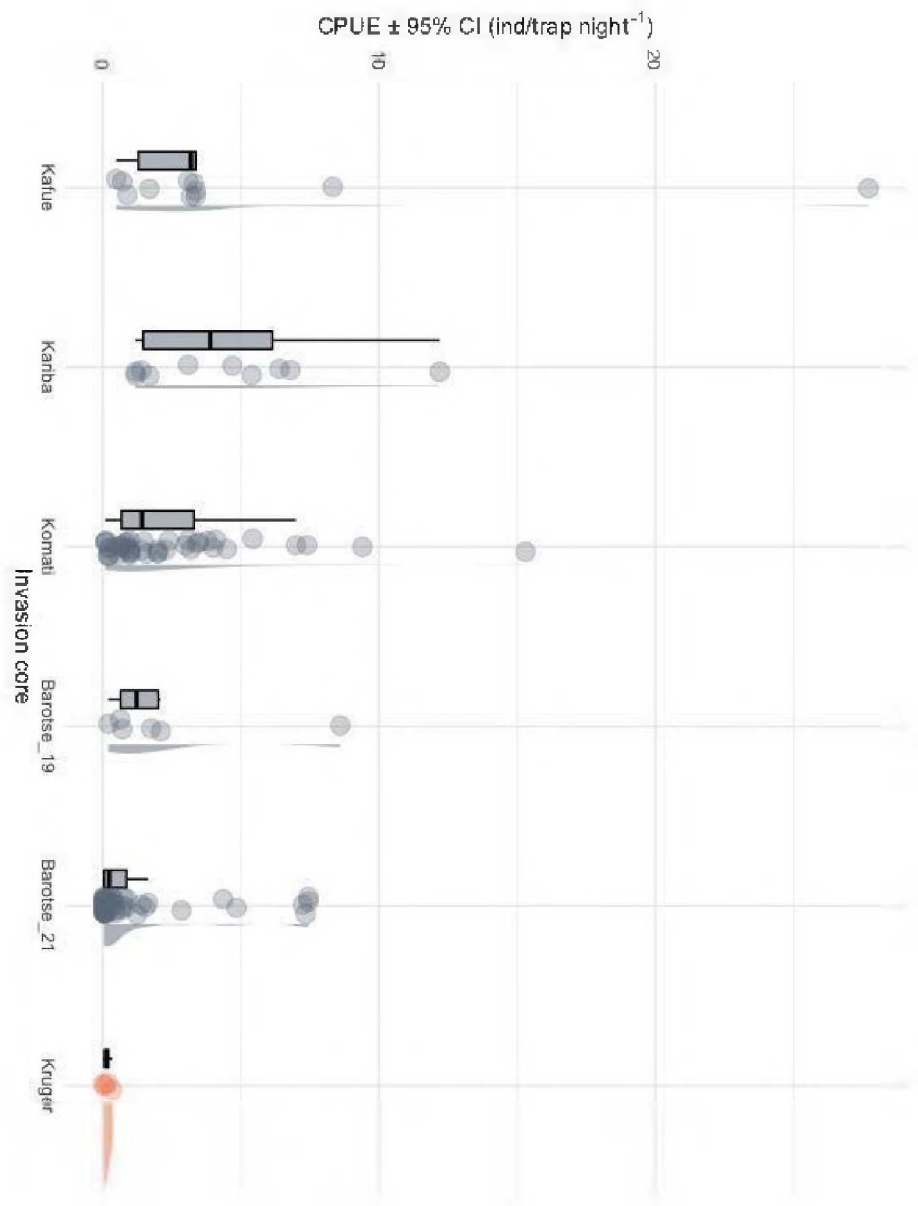
B)

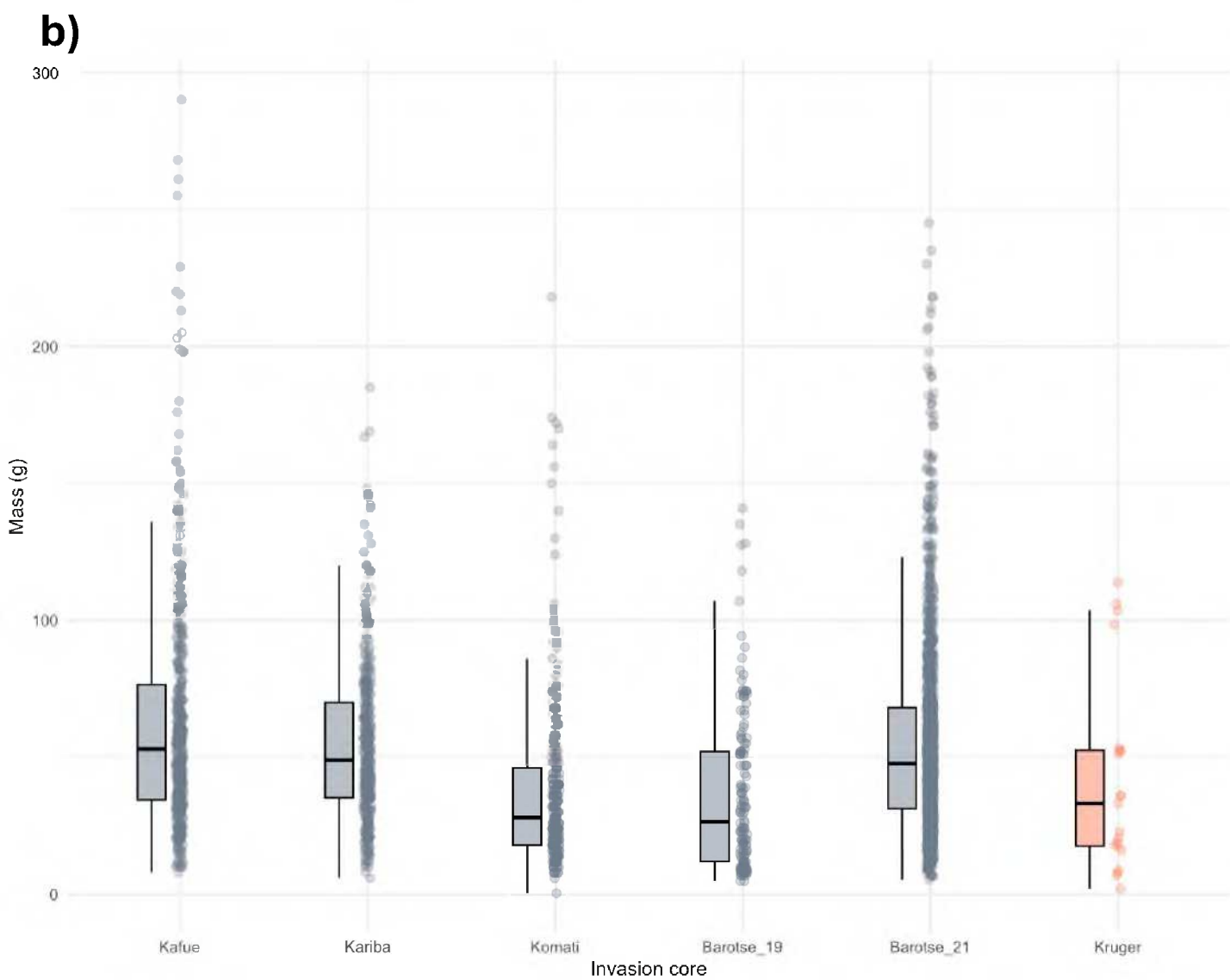
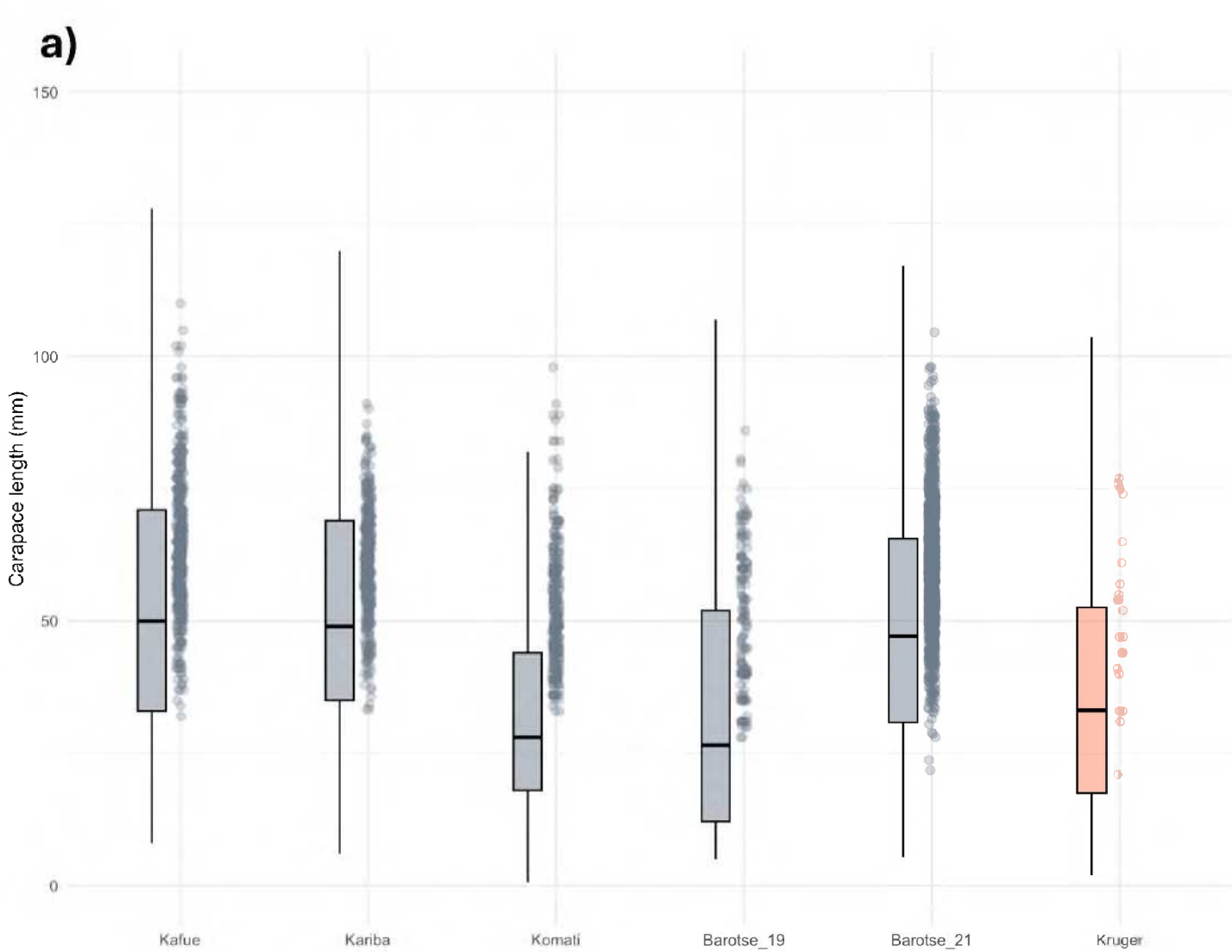
— Kruger rivers  
 □ Kruger National Park

CPUE:

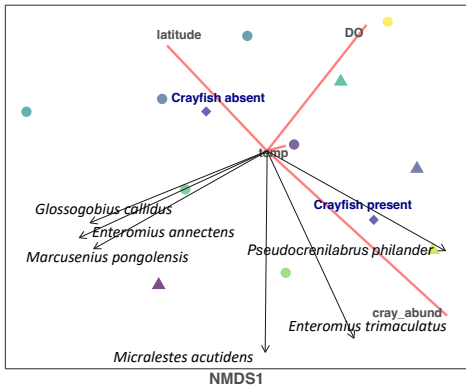
- ▲ electrofishing
- × 0
- $0 < 0.05$
- $0.05 < 0.1$
- $0.1 < 0.15$
- $0.15 < 0.2$



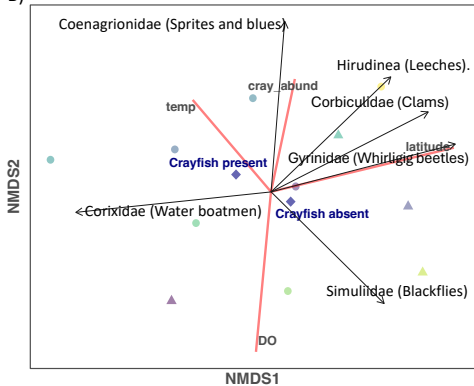




A)



B)



Crayfish presence/absence

- no
- ▲ yes

Site

- Antholysta
- Balule
- Crocodile Bridge
- Klipkoppies
- Lonely bull
- Lower Sabie
- Nsikazi Confluence
- Outpost
- Sekurakwane
- Van Graan
- Vyeboom