



UNIVERSITY OF LEEDS

This is a repository copy of *Research data sharing: what the FRIC?*.

White Rose Research Online URL for this paper:

<https://eprints.whiterose.ac.uk/219016/>

Version: Published Version

---

**Conference or Workshop Item:**

Phillips, B. and Proudfoot, R.E. orcid.org/0000-0002-6128-8533 (2016) Research data sharing: what the FRIC? In: Repository Fringe (RepoFringe) 2016, University of Edinburgh.

---

**Reuse**

Items deposited in White Rose Research Online are protected by copyright, with all rights reserved unless indicated otherwise. They may be downloaded and/or printed for private study, or other acts as permitted by national copyright laws. The publisher or other rights holders may allow further reproduction and re-use of the full text version. This is indicated by the licence information on the White Rose Research Online record for the item.

**Takedown**

If you consider content in White Rose Research Online to be in breach of UK law, please notify us by emailing [eprints@whiterose.ac.uk](mailto:eprints@whiterose.ac.uk) including the URL of the record and the reason for the withdrawal request.



[eprints@whiterose.ac.uk](mailto:eprints@whiterose.ac.uk)  
<https://eprints.whiterose.ac.uk/>



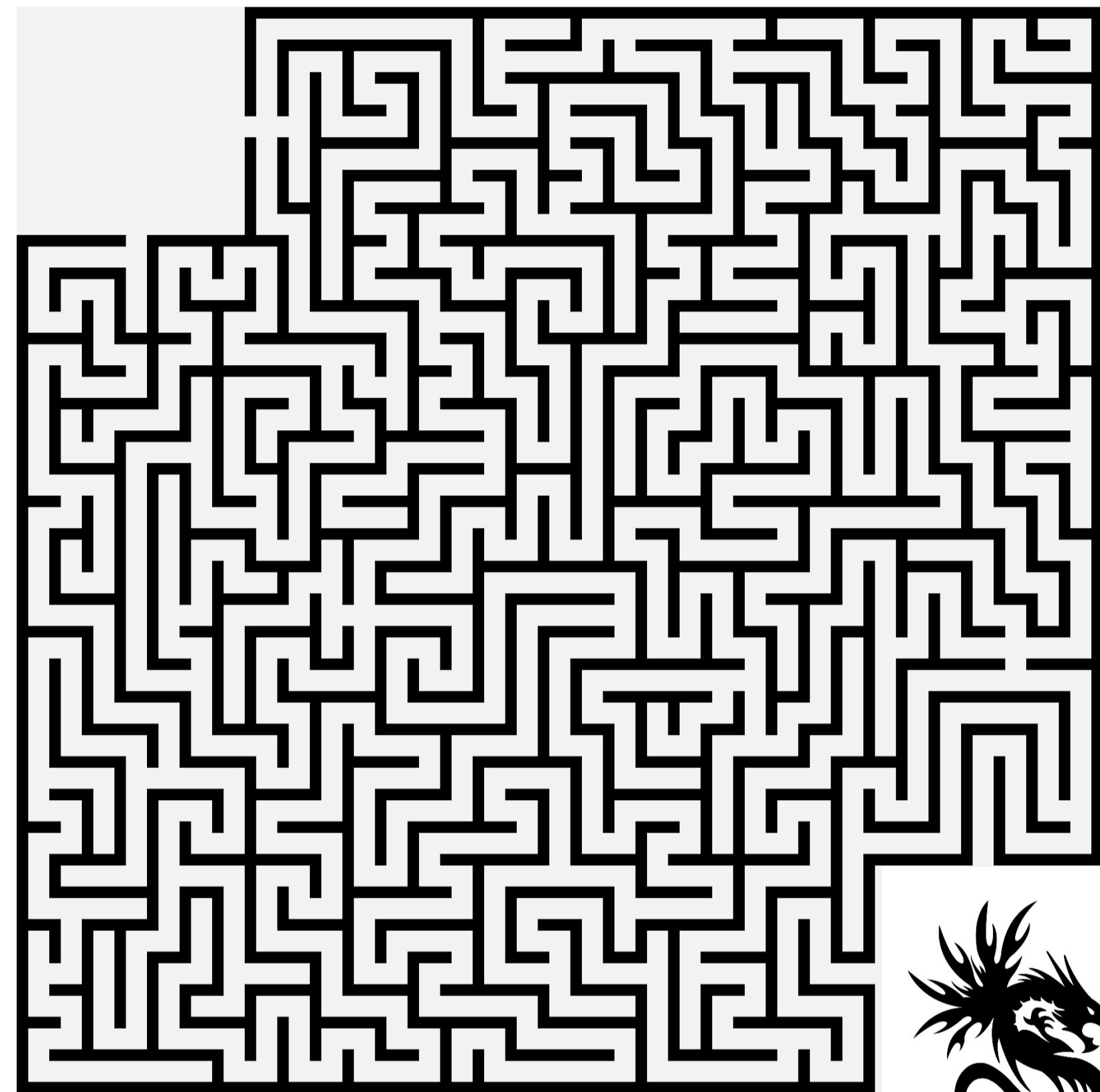
# Research data sharing: what the FRIC?

Lots of cooperation is needed to help researchers share data safely and make sure institutions have a consistent and coherent approach to data management. Here are some of the key players and policies....

## Your Quest

Use the **Sword and Shield of Safe Data Sharing** to protect you as you navigate the **Labyrinth of Trust**.

Slay the **Dragon of Data Confusion** and enter the **Kingdom of Public Good**.



## Ask an Oracle

Unlock the secrets of tribal unification as foretold by the Ancients in the forgotten treaties of safe data sharing:

- Research Data Leeds team 😊
- Leeds Institute of Data Analytics (Other Oracles are available)



**Leeds Tribes of Governance**  
To navigate successfully, the tribes must be united.



**FRICs – Faculty Research & Innovation Committees**

- ◊ Likes: saving researchers' time; clear expectations
- ◊ Dislikes: unnecessary bureaucracy
- ◊ Special power: understands discipline specific requirements, influence researcher behaviour



**FRECs – Faculty Research Ethics Committees**

- ◊ Likes: Data Protection Act, fully informed consent
- ◊ Dislikes: Risks to research participants
- ◊ Special power: influences the University Research Ethics Committee



**IPG – Information Protection Group**

- ◊ Likes: protecting sensitive and confidential information
- ◊ Dislikes: inappropriate data storage, reputational risk
- ◊ Special power: information security training



**RIB – Research and Innovation Board**

- ◊ Likes: workable solutions, research integrity and impact
- ◊ Dislikes: poor practice, missed opportunities
- ◊ Special power: owns the University Research Data Management Policy



**VEG – University Executive Group**

- ◊ The most feared tribe, characteristics are cloaked in mystery
- ◊ Special power: power!

You can only navigate the Labyrinth successfully if data sharing is covered by:

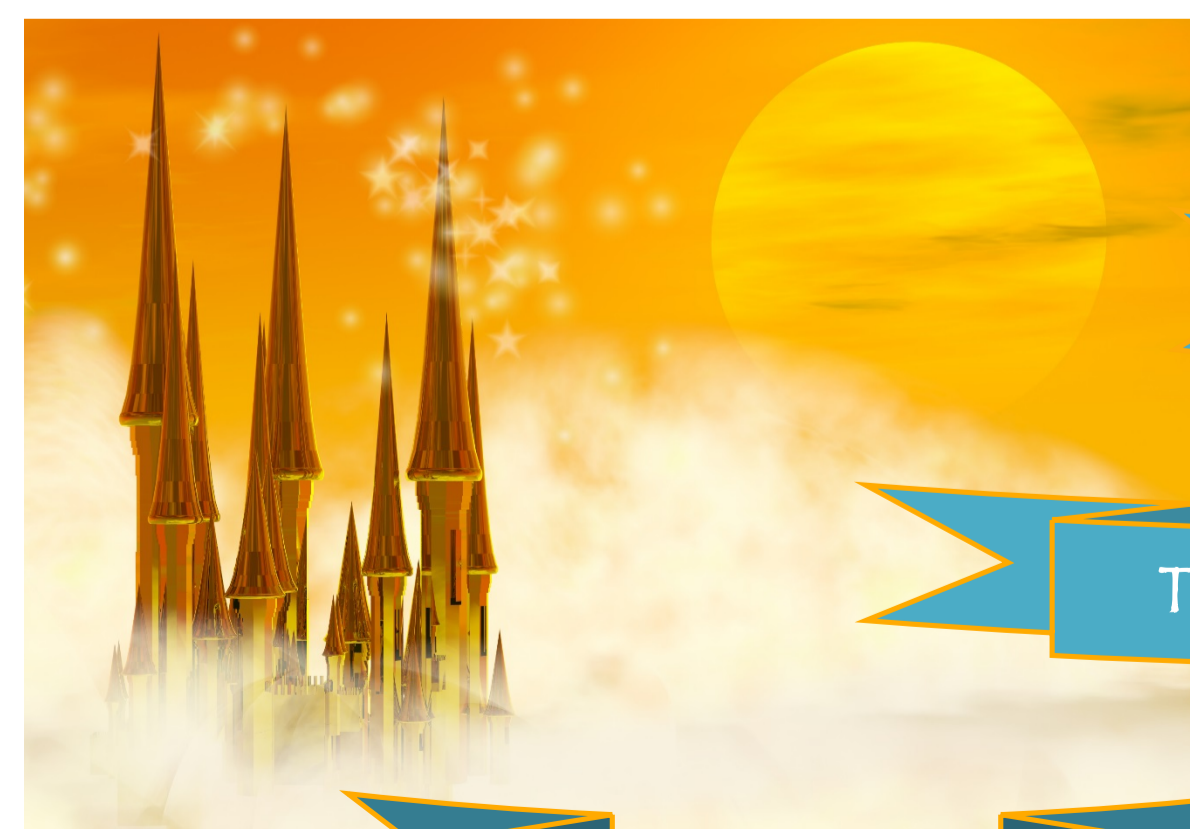
- Data Risk Assessment
- Data Security Policies
- Ethical review protocols
- Consent form and participant information sheet
- Data protection guidance
- IPR Policy
- Anonymisation code / guidance
- Research Data Management Policy
- Research related contracts
- A Data Access Committee

## Power Up Tip

Apply the ICO Anonymisation Code of Practice

## Special Bonus

Senior data management champion



Good science

Trust & transparency

Public good

Happy researchers



Brenda Phillips and Rachel Proudfoot  
Research Data Leeds  
researchdata@leeds.ac.uk

