



This is a repository copy of *Predicting the risk of disease recurrence and death following curative-intent radiotherapy for non-small cell lung cancer: The development and validation of two scoring systems from a large multicentre UK cohort.*

White Rose Research Online URL for this paper:

<https://eprints.whiterose.ac.uk/216458/>

Version: Supplemental Material

---

**Article:**

Evison, M., Barrett, E., Cheng, A. et al. (20 more authors) (2021) Predicting the risk of disease recurrence and death following curative-intent radiotherapy for non-small cell lung cancer: The development and validation of two scoring systems from a large multicentre UK cohort. *Clinical Oncology*, 33 (3). pp. 145-154. ISSN 0936-6555

<https://doi.org/10.1016/j.clon.2020.09.001>

---

Article available under the terms of the CC-BY-NC-ND licence  
(<https://creativecommons.org/licenses/by-nc-nd/4.0/>).

**Reuse**

Items deposited in White Rose Research Online are protected by copyright, with all rights reserved unless indicated otherwise. They may be downloaded and/or printed for private study, or other acts as permitted by national copyright laws. The publisher or other rights holders may allow further reproduction and re-use of the full text version. This is indicated by the licence information on the White Rose Research Online record for the item.

**Takedown**

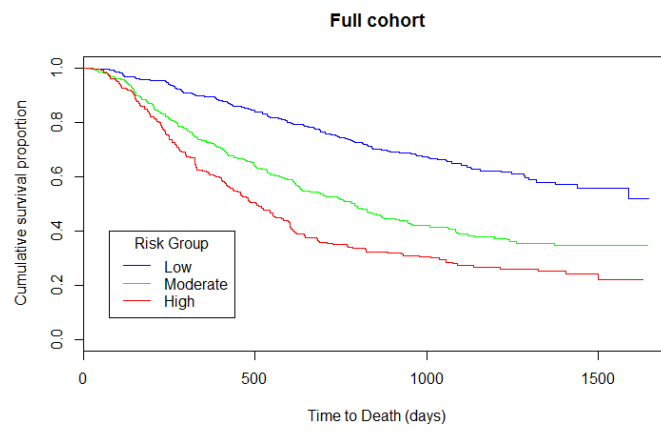
If you consider content in White Rose Research Online to be in breach of UK law, please notify us by emailing [eprints@whiterose.ac.uk](mailto:eprints@whiterose.ac.uk) including the URL of the record and the reason for the withdrawal request.



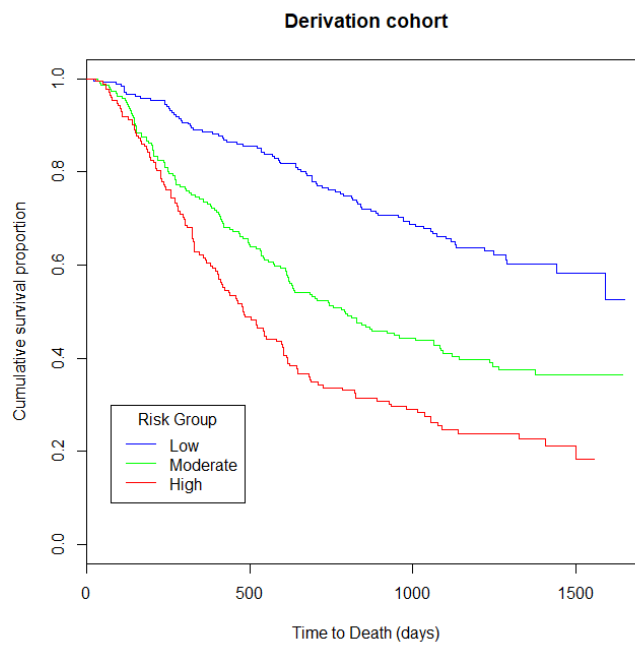
[eprints@whiterose.ac.uk](mailto:eprints@whiterose.ac.uk)  
<https://eprints.whiterose.ac.uk/>

**Figure 2:** Kaplan-Meier curves for overall survival stratified by low, moderate and high level risk groups for (A) the entire study cohort, (B) the derivation cohort, (C) the validation cohort and stratified by (D) 8<sup>th</sup> Edition TNM overall staging group

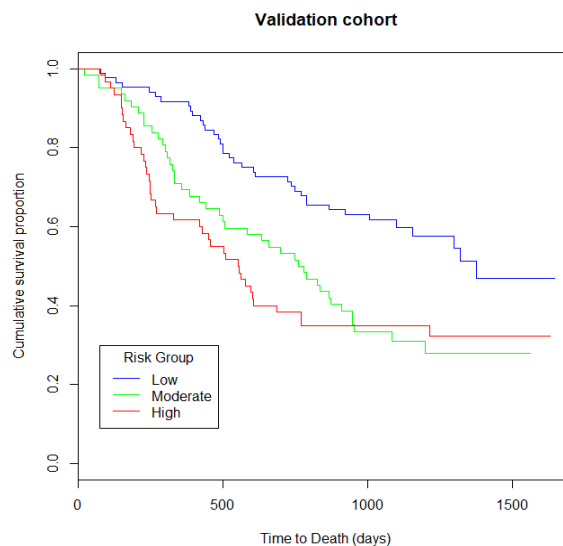
(A)



(B)



(C)



(D)

