



This is a repository copy of *Aortic flow is abnormal in HFpEF*.

White Rose Research Online URL for this paper:

<https://eprints.whiterose.ac.uk/211102/>

Version: Published Version

---

**Article:**

Mehmood, Z. [orcid.org/0000-0002-1142-7574](https://orcid.org/0000-0002-1142-7574), Assadi, H. [orcid.org/0000-0002-6143-8095](https://orcid.org/0000-0002-6143-8095), Li, R. et al. (16 more authors) (2024) Aortic flow is abnormal in HFpEF. Wellcome Open Research, 8. 577. ISSN 2398-502X

<https://doi.org/10.12688/wellcomeopenres.20192.2>

---

**Reuse**

This article is distributed under the terms of the Creative Commons Attribution (CC BY) licence. This licence allows you to distribute, remix, tweak, and build upon the work, even commercially, as long as you credit the authors for the original work. More information and the full terms of the licence here:

<https://creativecommons.org/licenses/>

**Takedown**

If you consider content in White Rose Research Online to be in breach of UK law, please notify us by emailing [eprints@whiterose.ac.uk](mailto:eprints@whiterose.ac.uk) including the URL of the record and the reason for the withdrawal request.



[eprints@whiterose.ac.uk](mailto:eprints@whiterose.ac.uk)  
<https://eprints.whiterose.ac.uk/>



## RESEARCH ARTICLE

**REVISED** **Aortic flow is abnormal in HFpEF [version 2; peer review: 2 approved]**

Zia Mehmood <sup>1</sup>, Hosamadin Assadi <sup>1,2</sup>, Rui Li<sup>1,2</sup>, Bahman Kasmai <sup>1,2</sup>, Gareth Matthews<sup>1,2</sup>, Ciaran Grafton-Clarke<sup>1,2</sup>, Aureo Sanz-Cepero<sup>1</sup>, Xiaodan Zhao <sup>3</sup>, Liang Zhong<sup>3-5</sup>, Nay Aung <sup>6,7</sup>, Kristian Skinner<sup>1</sup>, Charaka Hadinnapola <sup>1</sup>, Peter Swoboda <sup>8</sup>, Andrew J. Swift <sup>9</sup>, Vassilios S Vassiliou <sup>1,2</sup>, Christopher Miller<sup>10</sup>, Rob J. van der Geest <sup>11</sup>, Steffen Peterson <sup>6,7</sup>, Pankaj Garg <sup>1,2</sup>

<sup>1</sup>Department of Cardiology, Norfolk and Norwich University Hospitals NHS Foundation Trust, Norwich, Norfolk, NR4 7UY, UK

<sup>2</sup>Department of Cardiovascular and Metabolic Health, Norwich Medical School, University of East Anglia, Norwich, Norfolk, NR4 7TJ, UK

<sup>3</sup>National Heart Research Institute, National Heart Centre Singapore, Singapore, 169609, Singapore

<sup>4</sup>Cardiovascular Sciences Academic Clinical Program & Cardiovascular Metabolic Disorder Program, Duke National University of Singapore Medical School, Singapore, 169857, Singapore

<sup>5</sup>Department of Biomedical Engineering, National University of Singapore, Singapore, 117583, Singapore

<sup>6</sup>William Harvey Research Institute, NIHR Barts Biomedical Research Centre, Queen Mary University of London, London, EC1M 6BQ, UK

<sup>7</sup>Barts Heart Centre, St Bartholomew's Hospital, Barts Health NHS Trust, London, EC1A 7BS, UK

<sup>8</sup>Division of Biomedical Imaging, Leeds Institute of Cardiovascular and Metabolic Medicine, University of Leeds, Leeds, LS2 9JT, UK

<sup>9</sup>Department of Infection, Immunity & Cardiovascular Disease, The University of Sheffield, Sheffield, UK

<sup>10</sup>Division of Cardiovascular Sciences, School of Medical Sciences, Faculty of Biology, Medicine and Health, Manchester Academic Health Science Centre, The University of Manchester, Manchester, UK

<sup>11</sup>Department of Radiology, Division of Image Processing, Leiden University Medical Center, Leiden, 2300 RC, The Netherlands

**v2** First published: 15 Dec 2023, 8:577  
<https://doi.org/10.12688/wellcomeopenres.20192.1>

Latest published: 06 Mar 2024, 8:577  
<https://doi.org/10.12688/wellcomeopenres.20192.2>




**Abstract****Aims**


Turbulent aortic flow makes the cardiovascular system less effective. It remains unknown if patients with heart failure with preserved ejection fraction (HFpEF) have disturbed aortic flow. This study sought to investigate advanced markers of aortic flow disturbances in HFpEF.

**Methods**

This case-controlled observational study used four-dimensional flow cardiovascular magnetic resonance derived, two-dimensional phase-

**Open Peer Review****Approval Status**  

	1	2
<b>version 2</b> (revision) 06 Mar 2024		 <a href="#">view</a>
<b>version 1</b> 15 Dec 2023	 <a href="#">view</a>	 <a href="#">view</a>

1. **Nadir Elamin** , Sheffield Teaching Hospital, Sheffield, UK

2. **Jonathan Bennett**, University College

contrast reformatted plane data at an orthogonal plane just above the sino-tubular junction. We recruited 10 young healthy controls (HCs), 10 old HCs and 23 patients with HFpEF. We analysed average systolic aortic flow displacement (FDsavg), systolic flow reversal ratio (sFRR) and pulse wave velocity (PWV). In a sub-group analysis, we compared old HCs versus age-gender-matched HFpEF (N=10).

## Results

Differences were significant in mean age ( $P < 0.001$ ) among young HCs (22.9±3.5 years), old HCs (60.5±10.2 years) and HFpEF patients (73.7±9.7 years). FDsavg, sFRR and PWV varied significantly ( $P < 0.001$ ) in young HCs (8±4%, 2±2%, 4±2m/s), old HCs (16±5%, 7±6%, 11±8m/s), and HFpEF patients (23±10%, 11±10%, 8±3). No significant PWV differences existed between old HCs and HFpEF. HFpEF had significantly higher FDsavg versus old HCs (23±10% vs 16±5%,  $P < 0.001$ ). A FDsavg > 17.7% achieved 74% sensitivity, 70% specificity for differentiating them. sFRR was notably higher in HFpEF (11±10% vs 7±6%,  $P < 0.001$ ). A sFRR > 7.3% yielded 78% sensitivity, 70% specificity in differentiating these groups. In sub-group analysis, FDsavg remained distinctly elevated in HFpEF (22.4±9.7% vs 16±4.9%,  $P = 0.029$ ). FDsavg of >16% showed 100% sensitivity and 70% specificity ( $P = 0.01$ ). Similarly, sFRR remained significantly higher in HFpEF (11.3±9.5% vs 6.6±6.4%,  $P = 0.007$ ). A sFRR of >7.2% showed 100% sensitivity and 60% specificity ( $P < 0.001$ ).

## Conclusion

Aortic flow haemodynamics namely FDsavg and sFRR are significantly affected in ageing and HFpEF patients.

## Keywords

Magnetic Resonance Imaging, Aortic Flow, Haemodynamics, HFpEF, Cardiac Output

London, London, UK

Any reports and responses or comments on the article can be found at the end of the article.

**Corresponding author:** Pankaj Garg ([P.Garg@uea.ac.uk](mailto:P.Garg@uea.ac.uk))

**Author roles:** **Mehmood Z:** Conceptualization, Data Curation, Formal Analysis, Investigation, Methodology, Writing – Original Draft Preparation; **Assadi H:** Data Curation, Formal Analysis, Visualization, Writing – Review & Editing; **Li R:** Writing – Review & Editing; **Kasmai B:** Conceptualization, Methodology, Software, Writing – Review & Editing; **Matthews G:** Conceptualization, Writing – Review & Editing; **Grafton-Clarke C:** Conceptualization, Writing – Review & Editing; **Sanz-Cepero A:** Conceptualization, Writing – Review & Editing; **Zhao X:** Conceptualization, Writing – Review & Editing; **Zhong L:** Conceptualization, Writing – Review & Editing; **Aung N:** Conceptualization, Writing – Review & Editing; **Skinner K:** Conceptualization, Writing – Review & Editing; **Hadinnapola C:** Conceptualization, Writing – Review & Editing; **Swoboda P:** Conceptualization, Writing – Review & Editing; **Swift AJ:** Conceptualization, Writing – Review & Editing; **Vassiliou VS:** Conceptualization, Writing – Review & Editing; **Miller C:** Conceptualization, Writing – Review & Editing; **van der Geest RJ:** Conceptualization, Methodology, Software, Writing – Review & Editing; **Peterson S:** Conceptualization, Writing – Review & Editing; **Garg P:** Conceptualization, Resources, Writing – Original Draft Preparation, Writing – Review & Editing

**Competing interests:** PG is a clinical advisor for Pie Medical Imaging, Neosoft and Medis Medical Imaging; he provides consultancy to Edwards Lifesciences and Anteris. SEP provides Consultancy to Circle Cardiovascular Imaging Inc., Calgary, Alberta, Canada. All other authors have no competing interests to declare.

**Grant information:** PG and AJS are funded by Wellcome Trust Clinical Research Career Development Fellowships (220703/Z/20/Z & 205188/Z/16/Z). For the purpose of Open Access, the authors have applied a CC BY public copyright licence to any Author Accepted Manuscript version arising from this submission. The funders had no role in study design, data collection, analysis, publishing decision, or manuscript preparation. This work acknowledges the support of the National Institute for Health and Care Research Barts Biomedical Research Centre (NIHR203330), a delivery partnership of Barts Health NHS Trust, Queen Mary University of London, St George's University Hospitals NHS Foundation Trust and the St George's University of London.

*The funders had no role in study design, data collection and analysis, decision to publish, or preparation of the manuscript.*

**Copyright:** © 2024 Mehmood Z *et al.* This is an open access article distributed under the terms of the [Creative Commons Attribution License](https://creativecommons.org/licenses/by/4.0/), which permits unrestricted use, distribution, and reproduction in any medium, provided the original work is properly cited.

**How to cite this article:** Mehmood Z, Assadi H, Li R *et al.* **Aortic flow is abnormal in HFpEF [version 2; peer review: 2 approved]** Wellcome Open Research 2024, 8:577 <https://doi.org/10.12688/wellcomeopenres.20192.2>

**First published:** 15 Dec 2023, 8:577 <https://doi.org/10.12688/wellcomeopenres.20192.1>

**REVISED Amendments from Version 1**

The important changes made in this version include:

1. We have clarified how the diagnosis of HFpEF was made.
2. We have added internal validation of the agreement between 2D phase-contrast flow and 4D flow methods
3. We have corrected some typos and grammar.

Our results have not been changed or impacted and the message of the paper remains the same.

**Any further responses from the reviewers can be found at the end of the article**

**Abbreviations**

2D	two-dimensional
4D	four-dimensional
CMR	cardiovascular magnetic resonance imaging
FD	flow displacement
FDs <sub>avg</sub>	average systolic flow displacement
HCS	healthy controls
HFpEF	heart failure with preserved ejection fraction
HFrEF	heart failure with reduced ejection fraction
LVFP	left ventricular filling pressure
LVEF	left ventricular ejection fraction
PC	phase contrast
PWV	pulse wave velocity
sFRR	systolic flow reversal ratio
RA	rotational angle

**Introduction**

Heart failure with preserved ejection fraction (HFpEF) is a heterogeneous clinical syndrome in which patients have signs and symptoms of heart failure. The diagnosis of HFpEF has a significant negative impact on quality of life and a prognostic outcome comparable to those with heart failure with reduced ejection fraction (HFrEF)<sup>1,2</sup>. The hallmark pathophysiology of HFpEF is high left ventricular (LV) filling pressure (LVFP) despite normal or near normal LV ejection fraction (LVEF;  $\geq 50$  per cent)<sup>3</sup>. The epidemiology of heart failure with preserved ejection fraction (HFpEF) is constantly evolving as the condition continues to be a significant global health concern, with a prevalence of 2–3% in the general population and up to 50% in the elderly population<sup>2,4</sup>. There is a higher prevalence of hypertension, atrial fibrillation (AF), coronary artery disease (CAD), dyslipidemia, obesity, anaemia, diabetes mellitus, chronic kidney disease, and sleep-disordered breathing in these patients<sup>2,5,6</sup>.

The aorta is subject to unique and complex flow dynamics, characterised by high flow rates, extreme pressure variations, and intricate flow patterns in both physiological and

pathological states<sup>7</sup>. The relationship between arterial stiffness and LV diastolic function is well established<sup>8–10</sup>. Numerous studies have demonstrated and established quantitative aortic flow parameters such as flow displacement (FD) and flow reversal ratio (FRR) in pathological states such as aortopathy and aortic valve disease<sup>7,11–13</sup>. Elevated systolic flow displacement (FD<sub>avg</sub>), a marker of aortic flow eccentricity, causes turbulence within the ascending aorta. Any increase in FD leads to a rise in energy dissipation, which in turn reduces the efficiency of the cardiovascular system.

Additionally, any increase in systolic flow reversal ratio (sFRR) in the ascending aorta causes a loss of forward flow which is detrimental to the aortic conduit function, directly resulting in reduced peripheral perfusion and tissue oxygenation<sup>7</sup>. This intricate interplay between aortic haemodynamics and left ventricular function, referred to as ventricular-arterial coupling<sup>14–17</sup>, remains insufficiently researched. Even though specific aetiological factors of HFpEF, for example, hypertension or diabetes, have been associated with aortic stiffness, it remains unknown if patients with HFpEF have aortic flow abnormalities described above, which can result in heightened cardiac workload, decreased cardiac output and compromised distal perfusion subsequently causing shortness of breath.

We hypothesise that patients with HFpEF have signs of abnormal aortic flow which compromises the aortic conduit function and results in more energy expenditure, making the cardiovascular system less efficient. Hence, the main objective of this study was to investigate aortic flow haemodynamics utilising four-dimensional (4D) flow cardiovascular magnetic resonance (CMR) imaging in patients with HFpEF and healthy controls.

**Methods****Patient and Public Involvement**

The engagement of patients and the public was initiated at the project's inception through Norfolk and Suffolk Primary and Community Care Research Office (<https://nspccro.nihr.ac.uk/working-with-us/public-patient-and-carer-voice-in-research>). The PPI panel helped to make the study protocol patient friendly. PPI group provided insight into design of patient information sheet for the study. PPI group were in agreement that the research will produce open access research papers available to all to read.

**Study cohort**

We identified patients from the PREFER-CMR registry (**ClinicalTrials.gov: NCT05114785**). We enrolled 20 subjects into the healthy control (HC) group. The main inclusion criteria for the HCs were: > 18 years of age (<30 years for young HCs and, >50 years for old HCs) and no prior history of cardiovascular disease. We enrolled 23 patients with HFpEF. The main inclusion criteria for patients were over 18 years of age and a confirmed clinical diagnosis of HFpEF by clinical history of symptoms and signs, including CMR features of HFpEF (mainly raised left ventricular filling pressure >15mmHg)<sup>18</sup>. The exclusion criteria were limited to any CMR contraindication or fast atrial fibrillation (heart rate > 100 bpm) and high R-R variability.

### Ethics approval and consent to participate

This study was conducted according to the principles outlined in the Declaration of Helsinki - Version 2013. The collection and management of data were approved by the National Research Ethics Service in the United Kingdom (21/NE/0149). A pragmatic opt-out informed consent was obtained from all subjects included in the study<sup>19</sup>.

### Cardiovascular Magnetic Resonance protocol

CMR study was performed on a 1.5 Tesla Magnetom Sola Siemens system with a superconducting magnet (Siemens Healthineers AG, Erlangen, Germany). All patients were examined in the supine position, headfirst, using a respiratory sensor and electrocardiogram gating. Additionally, the scanner was equipped with a Biometric body with 18 coils.

The CMR protocol included baseline survey images and cines, gadolinium enhancement imaging, and 4D flow acquisition methods previously described by our group<sup>17,20–25</sup>. If 4D flow was not available, two-dimensional phase contrast acquisition was done at an orthogonal plane just above the sino-tubular junction.

For standard cines, we acquired 30 phases throughout the cardiac cycle. Other cine acquisition parameters include TR: 2.71, TE: 1.13, field of view (FOV): 360×289.3mm<sup>2</sup> with Phase FOV – 80.4%, number of signal averages (NSA): 1, matrix: 224×180 [phase], bandwidth: 167.4 kHz, [930Hz/Px], flip angle: 80, slice thickness: 8 mm and Grappa acceleration with a factor of 2.

For 4D flow acquisition, the initial VENC setting was 150–200 cm/s for all HCs and HFpEF cases. For 4D flow, we acquired 30 phases throughout the cardiac cycle to keep the data consistent with cines. The acquired temporal resolution was 40 ms. Other 4D flow acquisition parameters include TR: 4.98, TE: 2.71, field of view (FOV): 200×256.3 mm<sup>2</sup>, number of signal averages (NSA): 1, acquired voxel size = 3 × 3 × 3 mm<sup>3</sup>, bandwidth: 31.616 kHz, [494Hz/Px], flip angle: 5, and Grappa acceleration in the phase-encoding direction with a factor of 2 and slice direction of 1. The electrocardiogram was retrospectively gated with free breathing to avoid diastolic temporal blurring.

### CMR analysis

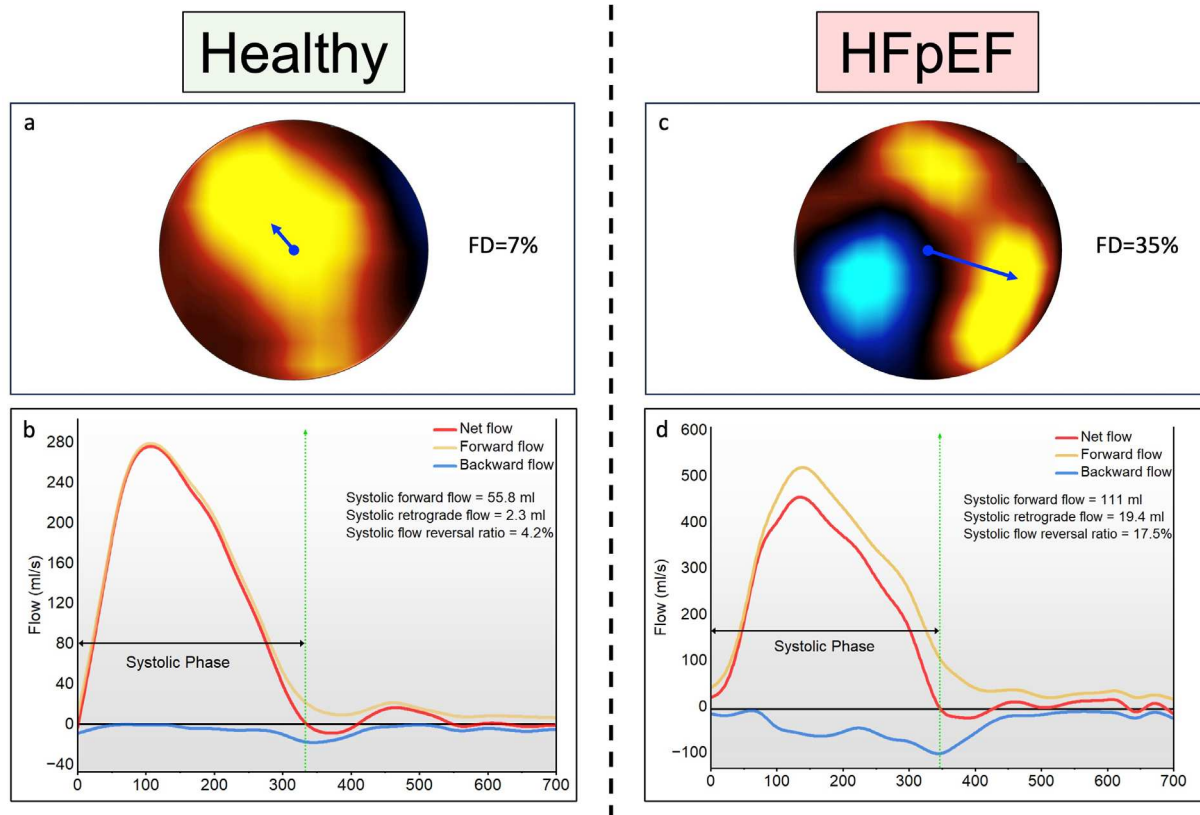
All image analyses were post-processed with the in-house developed MASS research software (MASS; Version 2022-EXP, Leiden University Medical Center, Leiden, The Netherlands). A static reformatted plane was planned through the ascending aorta at the mid-main pulmonary artery level to generate a through-plane velocity encoded two-dimensional (2D) phase contrast (PC) data using 4D flow CMR data. This plane was treated as a two-dimensional phase contrast plane. Ascending aortic helical flow was defined as the flow swirling around the aortic centre line. Ascending aorta vortex flow was defined as any flow rotating on the long axis of the aorta near the inner curvature of the aortic root<sup>26</sup> (Figure 1). The following parameters we automatically derived based on the aortic contours:

- Aortic Forward Flow: This refers to the stroke volume during a cardiac cycle.

- Aortic maximum and minimum area are the largest and smallest cross-sectional area (respectively) computed in the ascending aorta during a cardiac cycle.
- Flow displacement systolic average (FDsavg): This is the distance between the vessel's central point and the centre-of-velocity of the forward flow, normalised to the vessel size during systole. It is presented as a percentage. The centre-of-velocity of the forward flow is computed as the mean location of pixels weighted by the velocity values within a defined aortic contour on a 2D Phase Contrast (PC) image.
- Rotational Angle signifies the angle formed by the line connecting the centre of forward flow velocity and the radius pointing at 12 o'clock position within the ascending aorta cross-section on every 2D PC image during cardiac cycle. RA was established at zero when the vector pointed at 12 o'clock and progressed clockwise to 180 degrees when pointing backward (6 o'clock position). This is sensitive to errors in negligible flow displacement as the position of the centre-of-velocity and vessel are at a close proximity. Therefore, a slight modification of the aortic contour can displace the location of the centre-of-velocity flow and significantly alter RA. To circumvent this effect, we chose a FD=12% threshold based on our bench testing.
- Systolic Forward and Backward Flows: These are obtained using per-pixel information. All positive velocities within the region of interest during systole were used to derive systolic forward flow. In contrast, all negative velocities within the same region were used to derive systolic negative flow.
- Systolic Flow Reversal Ratio Flow curves generated for each cardiac cycle. sFRR= systolic retrograde flow/systolic forward flow x 100%.
- Pulse Wave Velocity is the ratio of distance and transit time between ascending to descending aorta. A 3D image is created from parallel scout images of ascending, arch and descending aorta. 2D PC aortic flow plane matched to 3D images noting exact velocity measure points. Arch length is traced between these points. Transit time, calculated as the time difference between the points where the ascending and descending aorta flow waveforms reached half maximum of their peak velocities.

### Statistical analysis

Data analyses were performed using MedCalc® Statistical Software, version 20.215 (MedCalc Software Ltd., Ostend, Belgium) and OriginPro, version 2023 (OriginLab Corporation, Northampton, MA, USA). Continuous variables are presented as the median along with the interquartile range (IQR). We treated data as non-parametric. To compare variables between the two groups, we employed the Mann-Whitney U test. For testing across three groups, we utilised the Kruskal-Wallis one-way ANOVA and followed it with a post-hoc analysis using the Conover method. To explore the independent association of



**Figure 1. Central illustration of case examples from the study cohort. A and B** – Flow mapping demonstrates normal predominantly laminar flow at peak systole in healthy individual with minimal flow reversal during systolic phases. **C and D** – Flow mapping a HFpEF patient demonstrating significant shift in flow displacement at peak systole. There is clear flow reversal observed (blue zone) at peak systole which is affecting aortic forward flow. This is quantified by FRR which is 17.5% during systole and can be noted on backward flow mapping (blue line) on the aortic flow curves.

all CMR indices, we used a partial correlation factor generated via the multiple regression method using all other CMR variables as covariates. To evaluate the ability of these blood flow parameters to distinguish HFpEF, we conducted Receiver Operator Characteristic (ROC) analysis and used Youden Index to determine cut-off values. We deemed statistical significance at a threshold of  $P < 0.05$ .

### Study size

We used healthy young versus old systolic flow displacement data to derive the possible sample size to differentiate healthy old versus HFpEF cohorts. Factoring a mean difference of 8% and standard deviations of 4 and 5, to achieve an alpha of 0.05, we need to recruit at least 11 HFpEF patients and 6 elderly patients with a total sample size of 17 to achieve a power of  $\beta = 0.20$ . To further improve the diagnostic range, we planned to recruit  $> 20$  HFpEF cases and at least 10 elderly healthy subjects.

## Results

### Study population

Patient characteristics are summarised in [Table 1](#). The study comprised 43 cases with comparable body surface area, of

which females accounted for 44%. These included ten individuals from the young HC group (females: 10%), another ten from the old HC group (females: 60%) and twenty-three HFpEF patients (females: 52%). The mean age was found to be significantly different in all three groups- younger HCs ( $22.9 \pm 3.5$  years) vs older HCs ( $60.5 \pm 10.2$  years;  $P < 0.001$ ) vs HFpEF cohorts ( $73.7 \pm 9.7$  years;  $P < 0.001$ ). The average age of HFpEF patients was found to be significantly older than that of old HCs ( $P < 0.001$ ). Among the HFpEF patients, 16 (70%) had dyslipidemia, 12 (52%) had atrial fibrillation, 11 (48%) had hypertension, 8 (35%) had coronary artery disease, and 5 (22%) were diabetics.

Both the old controls and patients with HFpEF exhibited a notable decrease in aortic forward flow in comparison to young controls ( $P = 0.02$ ) independent of gender and despite no significant variance in the left ventricular ejection fraction ([Table 2](#)). There was a significant rise in  $FD_{avg}$  in old controls and HFpEF in contrast to young controls with marked differences observed between these two groups as well ( $16 \pm 5\%$  vs  $23 \pm 10\%$ ,  $P < 0.001$ ). Likewise, the sFRR significantly differed in all three groups ( $P < 0.001$ ). Importantly, individuals

**Table 1. Study demographics.**

	Young HCs	Old HCs	HFpEF	P
<b>Number recruited</b>	<b>10</b>	<b>10</b>	<b>23</b>	
<b>Demographics</b>				
Age, years	22.9 ± 3.5	60.5 ± 10.2*	73.7 ± 9.7#	< 0.001
Female gender	1 (10)	6 (60)	12 (52)	0.076
BSA, m <sup>2</sup>	1.9 ± 0.30	1.8 ± 0.20	1.93 ± 0.27	0.409
<b>LV function</b>				
LV mass, g/m <sup>2</sup>	116 ± 19	77.6 ± 14*	117 ± 61#	0.005
LVEDV, ml/m <sup>2</sup>	194 ± 43	146 ± 40*	146 ± 53	0.006
LVESV, ml/m <sup>2</sup>	82 ± 29	55 ± 16*	62 ± 26	0.010
LVSV, ml/m <sup>2</sup>	104 ± 35	84 ± 22*	77 ± 34	0.014
LV ejection fraction, %	56 ± 6	60 ± 9	56 ± 7	0.438
<b>RV function</b>				
RVEDV, ml/m <sup>2</sup>	207 ± 49	144 ± 34*	144 ± 59	0.010
RVESV, ml/m <sup>2</sup>	93 ± 30	56 ± 23*	58 ± 29	0.008
RVSV, ml/m <sup>2</sup>	107 ± 39	80 ± 13	74 ± 38	0.066
RV ejection fraction, %	54 ± 5	58 ± 7	56 ± 14	0.276

Data were represented as median ± IQR (%). *BSA* body surface area, *EDV* end-diastolic volume, *ESV* end-systolic volume, *HCs* healthy cohorts, *HFpEF* heart failure with preserved ejection fraction, *LV* left ventricle, *RV* right ventricle, *SV* stroke volume.

\*P<0.05 compared young HCs versus old HCs; #P<0.05 compared old HCs versus HFpEF.

**Table 2. Aortic flow indices trend across the three groups.**

	Young HCs	Old HCs	HFpEF	P
<b>Number recruited</b>	<b>10</b>	<b>10</b>	<b>23</b>	
<b>Aortic flow parameters</b>				
AO Forward Flow, ml	97±35	70±18*	70±19	0.02
AO Forward Flow indexed, ml/m <sup>2</sup>	48±14	38±15*	36±10	0.01
AO Backward Flow, ml	2±1	1±4	2±3	0.86
AO Backward Flow indexed, ml	1±1	1±2	1±1	0.93
AO Max Area, mm <sup>2</sup>	7±2	9±3	10±5	0.01
AO Min Area, mm <sup>2</sup>	5±1	7±2*	8±4	<0.001
Flow Displacement systolic average, %	8±4	16±5*	23±10#	<0.001
Rotational Angle, °	0±0	-3±16	16±48#	0.04
Systolic Forward Flow, ml	90±37	66±18	77±27	0.15
Systolic Retrograde Flow, ml	2±1	4±4*	7±6#	<0.001
Systolic Flow Reversal Ratio, %	2±2	7±6*	11±10#	<0.001
Pulse Wave Velocity, m/s	4±2	11±8*	8±3	0.03

Data were represented as median ± IQR (%). *AO* aorta, *HCs* healthy cohorts, *HFpEF* heart failure with preserved ejection fraction.

\*P<0.05 compared young HCs versus old HCs; #P<0.05 compared old HCs versus HFpEF.



with HFpEF exhibited significantly higher sFRR compared to old controls ( $11\pm 10\%$  vs  $7\pm 6\%$ ,  $P<0.001$ ). These differences in FDSavg and sFRR in these two groups persisted regardless of the gender. Although the mean values of pulse wave velocity (PWV) in both old HCs and HFpEF were significantly higher than in controls, no significant differences were observed between these groups.

#### Association of aortic flow indices with age - young HCs vs old HCs

The mean age was significantly higher ( $P<0.001$ ) in older HCs ( $60.5\pm 10.2$  years) in comparison to younger HCs ( $22.9 \pm 3.5$  years). The indexed volumetric LV parameters were significantly reduced in old HCs, including indexed LV mass ( $77.6\pm 14$  g/m<sup>2</sup> vs  $116\pm 19$  g/m<sup>2</sup>,  $P=0.005$ ), LV end-diastolic volume (EDV) ( $146\pm 40$  ml/m<sup>2</sup> vs  $194\pm 43$  ml/m<sup>2</sup>,  $P=0.006$ ), LV end-systolic volume (ESV) ( $55\pm 16$  ml/m<sup>2</sup> vs  $82\pm 29$  ml/m<sup>2</sup>,  $P=0.010$ ), and LV stroke volume (SV) ( $84\pm 22$  ml/m<sup>2</sup> vs  $104\pm 35$  ml/m<sup>2</sup>,  $P=0.014$ ). The indexed aortic forward flow was significantly reduced in old HCs than young HCs ( $38\pm 15$  ml/m<sup>2</sup> vs  $48\pm 14$  ml/m<sup>2</sup>,  $P=0.001$ ). Similarly, significant differences were observed in FDSavg ( $16\pm 5\%$  vs  $8\pm 4\%$ ,  $P<0.001$ ), sFRR ( $7\pm 6\%$  vs  $2\pm 2\%$ ,  $P<0.001$ ) and PWV ( $11\pm 8$  m/s vs  $4\pm 2$  m/s,  $P<0.001$ ) between the two groups (Table 1 & Table 2).

Flow reversal ratio systolic average (sFRR), a marker of vorticity and reduced aortic conduit function, and FDSavg, a marker of flow eccentricity, were independently associated with age ( $P<0.001$  and  $P<0.0001$ , respectively) (Figure 2). sFRR was not significantly different between males and females ( $6.3\pm 8.8\%$  vs  $8.7\pm 5.3\%$ ,  $P=0.21$ ). Similarly, there was no statistically significant difference in FDSavg between males and females ( $15.5\pm 12\%$  vs  $21.5\pm 10\%$ ,  $P=0.066$ ).

On multiple regression analysis using Enter method aortic minimal area (partial  $R=0.45$ ,  $P=0.01$ ) and FDSavg (partial  $R=0.41$ ,  $P=0.03$ ) were the only two independent variables associated with age while factoring in all other CMR indices as covariates (Figure 3).

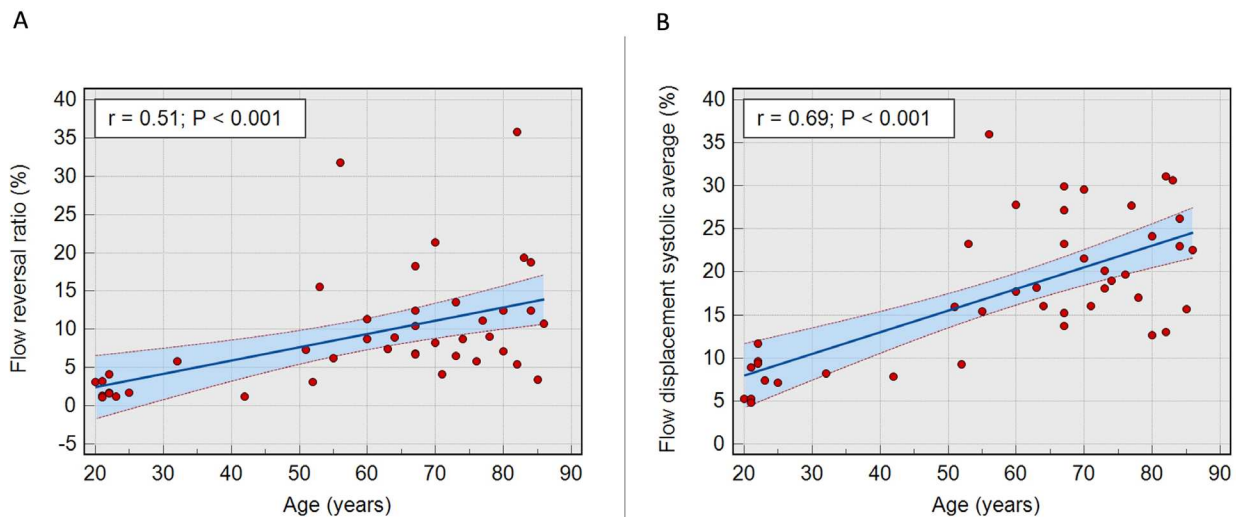
#### Aortic flow indices in Old HCs vs HFpEF

The FDSavg was significantly increased in HFpEF patients in comparison to old HCs ( $23\pm 10\%$  vs  $16\pm 5\%$ ,  $P<0.001$ ) (Figure 4). Additionally, sFRR was significantly elevated in HFpEF group vs old HCs ( $11\pm 10\%$  vs  $7\pm 6\%$ ,  $P<0.001$ ). The RA was observed to be distinctly higher in HFpEF patients when compared to old HCs ( $16\pm 48^\circ$  vs  $-37\pm 16^\circ$ ,  $P=0.04$ ). However, there was no significant difference observed in the indexed aortic forward flow and PWV between these two groups.

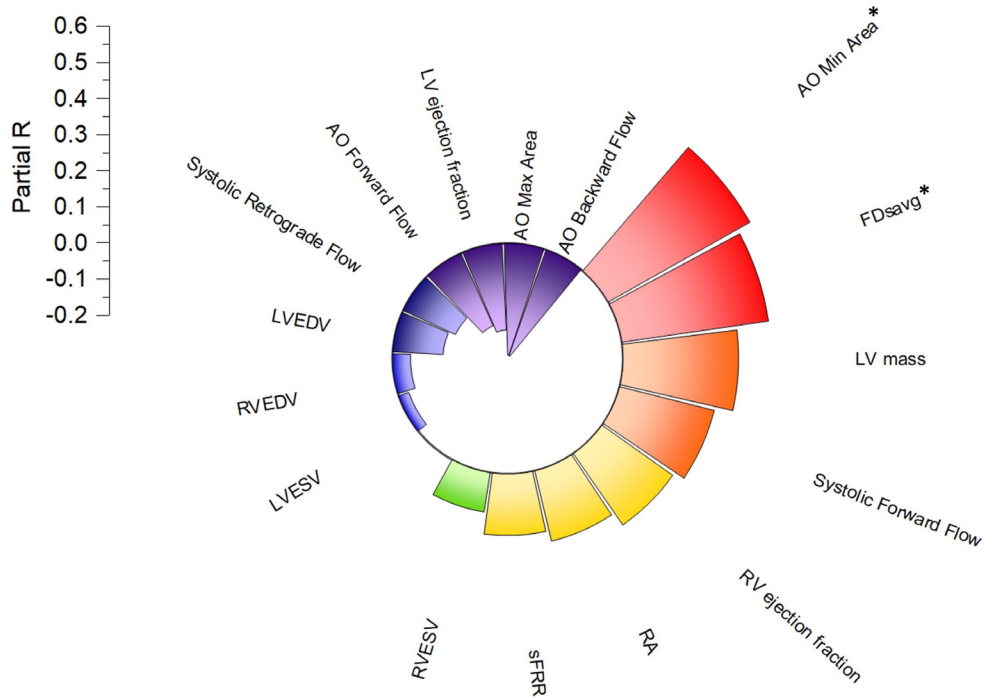
A FDS<sub>avg</sub> of  $>17.7\%$  showed 74% sensitivity and 70% specificity in differentiating between old controls and patients with HFpEF (AUC=0.71,  $P=0.05$ ). Similarly, a sFRR of  $>7.3\%$  showed 78% sensitivity and 70% specificity in distinguishing between old controls and HFpEF (AUC=0.76,  $P=0.004$ ).

#### Aortic flow indices in Old HCs vs Age-gender-matched HFpEF

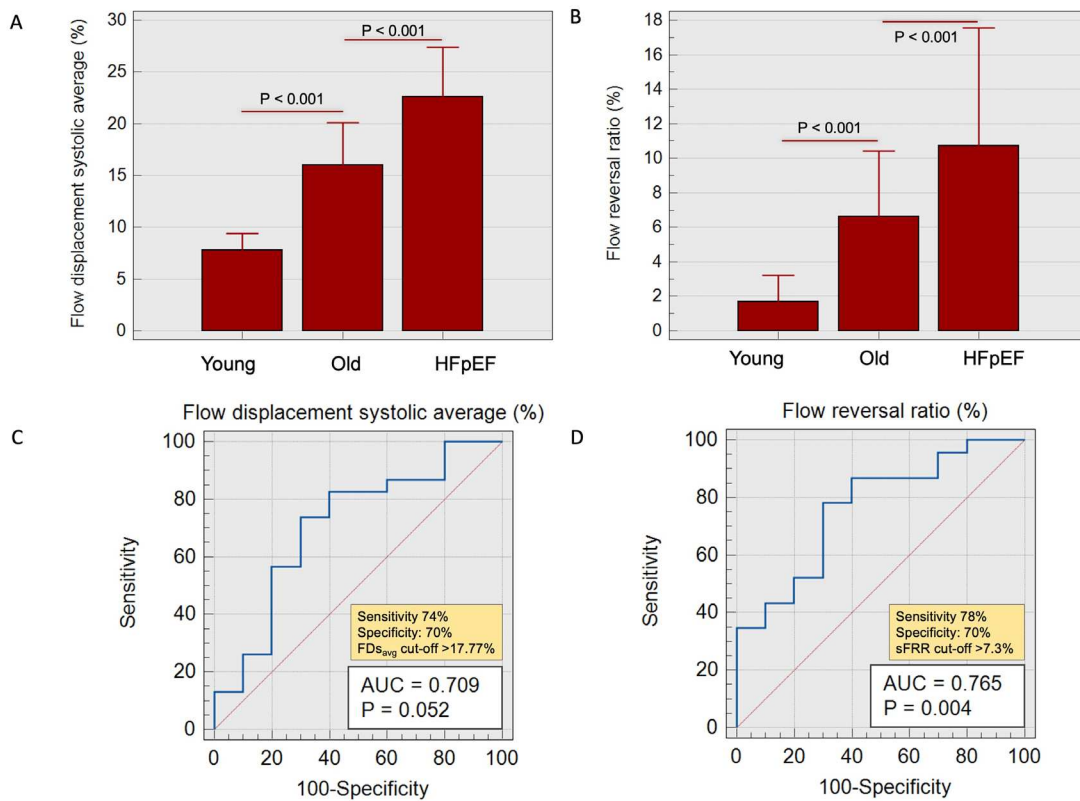
The differences in FDSavg and sFRR remained consistent and significant between HFpEF patients and old HCs when matched by age and gender. We observed a noticeable increase in FDSavg in age-gender matched HFpEF patients ( $N=10$ ) vs old HCs ( $22.4\pm 9.7\%$  vs  $16\pm 4.9\%$ ,  $P=0.029$ ) (Figure 5). Furthermore, sFRR was significantly elevated in age-gender-matched HFpEF patients vs old HCs ( $11.3\pm 9.5\%$  vs  $6.6\pm 6.4\%$ ,  $P=0.007$ ). However, there was no significant difference observed in the indexed aortic forward flow, PWV and RA among these two groups. (Table 3).



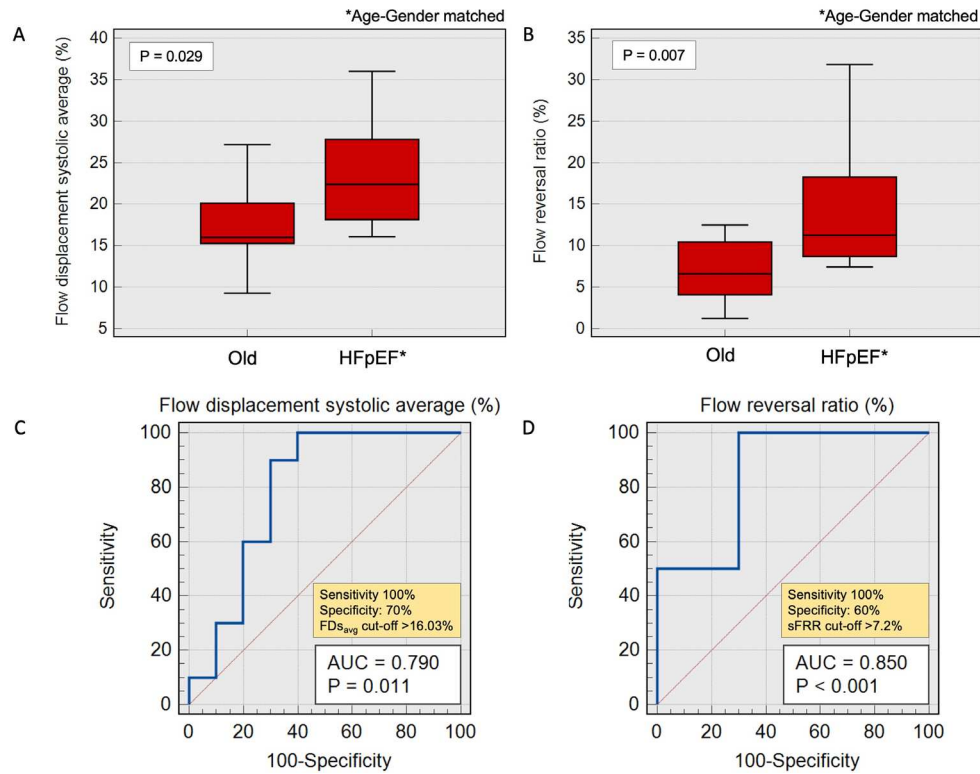
**Figure 2.** **A** - Scatter plot with 95% confidence interval illustrating a direct correlation between age and systolic flow reversal ratio ( $P<0.001$ ). **B** - Scatter plot with 95% confidence interval illustrating a linear correlation between age and flow displacement systolic average ( $P<0.001$ ).



**Figure 3.** Radial bar plot illustrating a linear partial independent correlation of age with left ventricular and aortic flow parameters. Aortic minimum area (AO min area) and FDsavg have independent association to age of the whole study cohort and both increase with age.



**Figure 4.** **A** - Bar charts demonstrating flow displacement systolic average trends in young vs old healthy cohorts vs HFpEF patients. **B** - Bar charts demonstrating systolic flow reversal ratio trends in young and old healthy cohorts and HFpEF patients. **C** and **D** - Receiver operating characteristic (ROC) with area under the curve demonstrating acceptable correlation in old HCs vs patients with HFpEF.



**Figure 5.** **A** – Bar charts demonstrating average systolic flow displacement trends in old healthy cohorts and age-gender-matched HFpEF patients. **B** - Bar charts demonstrating systolic flow reversal ratio trends in old healthy cohorts vs age-gender-matched HFpEF patients. **C** and **D** - Receiver operating characteristic (ROC) with area under the curve demonstrating acceptable correlation in old HCs vs patients with age-gender-matched HFpEF.

**Table 3.** Aortic flow indices in age-gender-matched old healthy cohort versus HFpEF.

	Old HCs N=10	HFpEF N=10	P-value
AO Forward Flow, ml	69.7±17.6	66.7±25.6	0.529
AO Forward Flow indexed, ml/m <sup>2</sup>	38±15	35.1±11.4	0.529
AO Backward Flow, ml	1.1±3.6	2.1±2.8	0.436
AO Backward Flow indexed, ml	0.6±2.1	1±1.3	0.481
AO Max Area, mm <sup>2</sup>	8.8±2.6	8.2±3.8	0.734
AO Min Area, mm <sup>2</sup>	6.8±1.5	6.9±3.2	0.496
Flow Displacement systolic average, %	16±4.9	22.4±9.7	0.029*
Rotational Angle, °	-3.3±16.2	4.7±39.5	0.579
Systolic Forward Flow, ml	66.4±18	66.7±25.3	0.529
Systolic Retrograde Flow, ml	4.2±4.4	8.3±5.7	0.017*
Systolic Flow Reversal Ratio, %	6.6±6.4	11.3±9.5	0.007*
Pulse Wave Velocity, m/s	11±8.1	8.3±0.1	0.727

Data were represented as median ± IQR (%). AO aorta, HCs healthy cohorts, HFpEF heart failure with preserved ejection fraction.

\*P<0.05 compared young HCs versus old HCs; #P<0.05 compared old HCs versus HFpEF.

A  $FD_{savg}$  exceeding 16% exhibited 100% sensitivity and 70% specificity in discerning age-gender matched HFpEF patients from old HCs (AUC=0.79,  $P=0.01$ ). Correspondingly, a sFRR higher than 7.2% demonstrated a sensitivity of 100% and 60% specificity in distinguishing age-gender matched HFpEF patients from old HCs (AUC=0.85,  $P<0.001$ ).

#### Two-dimensional phase-contrast versus four-dimensional phase-contrast reformatted plane

The coefficient of variation (CoV) between 4D flow derived and two-dimensional phase-contrast derived was 9.6% for  $FD_{savg}$  and for sFRR CoV was 10.6% with a within subject variation of only 0.7% ( $P=0.26$ ).

### Discussion

This study is one of the first to explore shifts in aortic flow hemodynamics within the ageing population and patients with HFpEF. A significant finding of this study is that both ageing and HFpEF demonstrate a rise in the systolic flow reversal ratio, which is a marker of aortic conduit function. This aortic flow biomarker, which also represents turbulent flow, exhibited marked disparities between old control group and age-gender-matched HFpEF patients. Moreover,  $FD_{savg}$ , an indicator of flow eccentricity in the ascending aortic root, increased progressively from young to old controls to HFpEF with marked differences between old controls and age-gender-matched HFpEF patients. Aortic forward flow also decreased in all respective groups despite no significant difference in left ventricular ejection fraction. We observed that the associations of sFRR and  $FD_{savg}$  were aligned with ageing rather than LV functional parameters. These CMR-derived aortic flow biomarkers have high sensitivity to detect HFpEF early in the disease process and contribute to improved phenotyping.

#### Mechanism underpinning Systolic Flow Displacement

Increased flow eccentricity in the aorta causes turbulence resulting in energy dissipation, requiring the heart to expend more energy to maintain sufficient blood flow making the cardiovascular system inefficient<sup>23,24,27,28</sup>. The clinical utility of  $FD_{savg}$  as an independent biomarker has been established in predicting the rate of aortic growth in patients with bicuspid aortic valve (BAV) and aortopathy (with and without aortic valve disease)<sup>7,28-31</sup>. We speculate that flow eccentricity, measured by  $FD_{savg}$ , develops due to left ventricular outflow tract remodelling and aortic remodelling due to an age-associated increase in afterload conditions on the ventricle<sup>32-34</sup>.

#### Mechanism underpinning Systolic Flow Reversal

Elevated sFRR, a marker of reduced aortic conduit function and increased vorticity, has been independently linked to aortic root dilatation<sup>35</sup> and shows a linear relationship with the severity of aortic stenosis<sup>36</sup>. Barker *et al.*<sup>36</sup> demonstrated an FRR of >10% in patients with BAV and significant aortic stenosis. The systolic flow reversal ratio measures the retrograde flow of vorticity and represents areas of low-pressure development near the inner curvature of the aortic root due to pressure equalisation, which will plausibly happen if left ventricular filling pressures are high or if, during systolic contraction, the left ventricle is not able to generate enough mechanical force<sup>37</sup>,

for example, after myocardial infarction. These underlying pathophysiological processes have been described in previous computational fluid dynamics simulation studies<sup>38</sup>. In our HFpEF cohort, 48% of patients had systemic hypertension, and 35% had a previous myocardial infarction.

Our study is the first to show that abnormal aortic hemodynamics correlates with age and HFpEF without significant aortic valve disease. We observed that an sFRR level greater than 7.3% was found to have a sensitivity of 78% and specificity of 70% in distinguishing between old controls and HFpEF. Moreover, an  $FD_{savg}$  level greater than 18% had a sensitivity of 74% and specificity of 70% for the same differentiation. This study highlights that the mechanism of both flow eccentricity and flow turbulence is not only associated with the stenotic aortic valve. Interestingly, this study did not reveal any significant difference in PWV between old controls and HFpEF, contrary to previous studies<sup>39,40</sup>.

#### Ageing signatures of CMR

Recently there has been a lot of interest in ageing-associated CMR signatures as ageing in itself is associated with cardiovascular outcomes. In a recent study by Shah, M. *et al.* (2023), machine learning was employed to forecast biological age by analysing multiple cardiovascular characteristics from CMR images and electrical data in 39,599 participants<sup>41</sup>. The study found that aging was associated with left ventricular and aortic stiffness, both of which emerged as a robust predictor of deviation from healthy cardiovascular aging and associated with range of cardiovascular outcomes. In addition, more recently, in a cohort of 169 healthy individuals, Zhao *et al.* have demonstrated how both  $FD_{savg}$  and sFRR are associated with exercise capacity assessed by peak oxygen uptake (PVO<sub>2</sub>) from cardiopulmonary exercise testing ( $r=-0.302$ ,  $r=-0.219$   $PP<0.05$ )<sup>42</sup>. With increase in both this aortic flow abnormalities, PVO<sub>2</sub> decreases. The findings from their research, along with our study, support the notion that breathlessness in patients with HFpEF is correlated with aortic flow abnormalities. With the growing literature, FD and sFRR analysis can be applied to 2D phase-contrast imaging, extending their applicability to wider and more diverse populations to define this causation better.

#### Clinical impact

Current echocardiogram models to estimate left ventricular filling pressure remain complex and factor in right heart haemodynamics, including tricuspid regurgitation velocity, which will get affected in the end-stage of HFpEF. An increase in right-sided pressure will result after the whole pulmonary vascular bed has been adversely remodelled, leading to a late diagnosis of HFpEF. The utility of 4D Flow CMR to quantify aortic flow hemodynamics ( $FD_{savg}$  and sFRR) could aid in the early diagnosis of HFpEF and sub-phenotyping patients with HFpEF. This is important as it will allow early pharmacological intervention and improve clinical outcomes. Moreover,  $FD_{savg}$  and FRR can be easily applied to 2D phase contrast CMR, making them widely applicable for more extensive studies. Future studies are required to evaluate the direct link between aortic flow physiology and exercise capacity. We must also establish how aortic flow influences left ventricular filling and central aortic pressures.

## Limitations

While our observational and case-controlled study suggests that there may be a link between aortic flow abnormalities with ageing and HFpEF, it is important to note that the sample size used in this study was relatively small, which limits the generalisability and calls for further research with larger and more diverse cohort to draw definitive conclusions. There is a possibility of selection bias in the HFpEF cohort, and we may be identifying individuals who are much further down the temporal changes of ageing associated with HFpEF. Nevertheless, by doing age-matched comparison, we still are able to demonstrate patho-physiological step-up changes in different ages and diseased state. With no intervention currently available to improve aortic flow hemodynamics, our study is limited in establishing causality and restricts observations to only correlations. It is possible that other prevalent systemic risk factors in HFpEF, such as hypertension, obstructive sleep apnoea (OSA), diabetes, and obesity, could also contribute to changes in flow displacement and sFRR. Therefore, caution must be exercised when interpreting these findings as they may not represent the boarder population with HFpEF and age-related changes in the cardiovascular system.

## Conclusion

Aortic flow haemodynamics, namely FD<sub>avg</sub> and sFRR, are significantly affected in ageing and patients with HFpEF. Incorporating aortic flow haemodynamics assessment in

routine clinical practice may allow early and improved detection of HFpEF.

## Ethics approval and consent to participate

This study was conducted according to the principles outlined in the Declaration of Helsinki - Version 2013. The collection and management of data were approved by the National Research Ethics Service in the United Kingdom (21/NE/0149).

## Consent

All healthy controls gave informed consent. All patients were provided with clear information about the study. A pragmatic opt-out informed consent was obtained from all patients included in the study<sup>20</sup>.

## Data availability

The datasets generated and analysed during the current study are not publicly available. Access to the raw images of patients is not permitted since specialised post-processing imaging-based solutions can identify the study patients in the future. Data are available from the corresponding author upon reasonable request.

## Acknowledgements

We acknowledge Rebecca Girling, Laura Staff and Victoria Underwood from Norfolk and Norwich University Hospitals for their constant support in managing the study.

## References

- McDonagh TA, Metra M, Adamo M, *et al.*: **2021 ESC Guidelines for the diagnosis and treatment of acute and chronic heart failure.** *Eur Heart J.* 2021; **42**(36): 3599–726.  
[PubMed Abstract](#) | [Publisher Full Text](#)
- Mentz RJ, Kelly JP, Von Lueder TG, *et al.*: **Noncardiac comorbidities in heart failure with reduced versus preserved ejection fraction.** *J Am Coll Cardiol.* 2014; **64**(21): 2281–93.  
[PubMed Abstract](#) | [Publisher Full Text](#) | [Free Full Text](#)
- Dunlay SM, Roger VL, Redfield MM: **Epidemiology of heart failure with preserved ejection fraction.** *Nat Rev Cardiol.* 2017; **14**(10): 591–602.  
[PubMed Abstract](#) | [Publisher Full Text](#)
- Tsao CW, Lyass A, Enserro D, *et al.*: **Temporal Trends in the Incidence of and Mortality Associated With Heart Failure With Preserved and Reduced Ejection Fraction.** *JACC Heart Fail.* 2018; **6**(8): 678–85.  
[PubMed Abstract](#) | [Publisher Full Text](#) | [Free Full Text](#)
- Hillege HL, Nitsch D, Pfeffer MA, *et al.*: **Renal function as a predictor of outcome in a broad spectrum of patients with heart failure.** *Circulation.* 2006; **113**(5): 671–8.  
[PubMed Abstract](#) | [Publisher Full Text](#)
- Van Deursen VM, Urso R, Laroche C, *et al.*: **Co-morbidities in patients with heart failure: an analysis of the European Heart Failure Pilot Survey.** *Eur J Heart Fail.* 2014; **16**(1): 103–11.  
[PubMed Abstract](#) | [Publisher Full Text](#)
- Burris NS, Sigovan M, Knauer HA, *et al.*: **Systolic flow displacement correlates with future ascending aortic growth in patients with bicuspid aortic valves undergoing magnetic resonance surveillance.** *Invest Radiol.* 2014; **49**(10): 635–9.  
[PubMed Abstract](#) | [Publisher Full Text](#)
- Mitchell GF: **Arterial stiffness and hypertension: chicken or egg?** *Hypertension.* 2014; **64**(2): 210–4.  
[PubMed Abstract](#) | [Publisher Full Text](#) | [Free Full Text](#)
- O'Rourke MF, Hashimoto J: **Mechanical factors in arterial aging: a clinical perspective.** *J Am Coll Cardiol.* 2007; **50**(1): 1–13.  
[PubMed Abstract](#) | [Publisher Full Text](#)
- De Tombe PP, Jones S, Burkhoff D, *et al.*: **Ventricular stroke work and efficiency both remain nearly optimal despite altered vascular loading.** *Am J Physiol.* 1993; **264**(6 Pt 2): H1817–24.  
[PubMed Abstract](#) | [Publisher Full Text](#)
- Sigovan M, Hope MD, Dyverfeldt P, *et al.*: **Comparison of four-dimensional flow parameters for quantification of flow eccentricity in the ascending aorta.** *J Magn Reson Imaging.* 2011; **34**(5): 1226–30.  
[PubMed Abstract](#) | [Publisher Full Text](#)
- Hope TA, Markl M, Wigström L, *et al.*: **Comparison of flow patterns in ascending aortic aneurysms and volunteers using four-dimensional magnetic resonance velocity mapping.** *J Magn Reson Imaging.* 2007; **26**(6): 1471–9.  
[PubMed Abstract](#) | [Publisher Full Text](#)
- Markl M, Draney MT, Hope MD, *et al.*: **Time-resolved 3-dimensional velocity mapping in the thoracic aorta: visualization of 3-directional blood flow patterns in healthy volunteers and patients.** *J Comput Assist Tomogr.* 2004; **28**(4): 459–68.  
[PubMed Abstract](#) | [Publisher Full Text](#)
- O'Rourke MF, Nichols WW: **Aortic diameter, aortic stiffness, and wave reflection increase with age and isolated systolic hypertension.** *Hypertension.* 2005; **45**(4): 652–8.  
[PubMed Abstract](#) | [Publisher Full Text](#)
- Sunagawa K, Maughan WL, Burkhoff D, *et al.*: **Left ventricular interaction with arterial load studied in isolated canine ventricle.** *Am J Physiol.* 1983; **245**(5 Pt 1): H773–80.  
[PubMed Abstract](#) | [Publisher Full Text](#)
- Bolger AF, Heiberg E, Karlsson M, *et al.*: **Transit of blood flow through the human left ventricle mapped by cardiovascular magnetic resonance.** *J Cardiovasc Magn Reson.* 2007; **9**(5): 741–7.  
[PubMed Abstract](#) | [Publisher Full Text](#)
- Assadi H, Uthayachandran B, Li R, *et al.*: **Kat-ARC accelerated 4D flow CMR: clinical validation for transvalvular flow and peak velocity assessment.** *Eur Radiol Exp.* 2022; **6**(1): 46.  
[PubMed Abstract](#) | [Publisher Full Text](#) | [Free Full Text](#)

18. Garg P, Gosling R, Swoboda P, *et al.*: **Cardiac magnetic resonance identifies raised left ventricular filling pressure: prognostic implications.** *Eur Heart J.* 2022; **43**(26): 2511–2522.  
[PubMed Abstract](#) | [Publisher Full Text](#) | [Free Full Text](#)
19. Vellinga A, Cormican M, Hanahoe B, *et al.*: **Opt-out as an acceptable method of obtaining consent in medical research: A short report.** *BMC Med Res Methodol.* 2011; **11**: 40.  
[PubMed Abstract](#) | [Publisher Full Text](#) | [Free Full Text](#)
20. Li R, Assadi H, Matthews G, *et al.*: **The Importance of Mitral Valve Prolapse Doming Volume in the Assessment of Left Ventricular Stroke Volume with Cardiac MRI.** *Med Sci (Basel).* 2023; **11**(1): 13.  
[PubMed Abstract](#) | [Publisher Full Text](#) | [Free Full Text](#)
21. Barker N, Zafar H, Fidock B, *et al.*: **Age-associated changes in 4D flow CMR derived Tricuspid Valvular Flow and Right Ventricular Blood Flow Kinetic Energy.** *Sci Rep.* 2020; **10**(1): 9908.  
[PubMed Abstract](#) | [Publisher Full Text](#) | [Free Full Text](#)
22. Garg P, Crandon S, Swoboda PP, *et al.*: **Left ventricular blood flow kinetic energy after myocardial infarction - Insights from 4D flow cardiovascular magnetic resonance.** *J Cardiovasc Magn Reson.* 2018; **20**(1): 61.  
[PubMed Abstract](#) | [Publisher Full Text](#) | [Free Full Text](#)
23. Garg P, Van Der Geest RJ, Swoboda PP, *et al.*: **Left ventricular thrombus formation in myocardial infarction is associated with altered left ventricular blood flow energetics.** *Eur Heart J Cardiovasc Imaging.* 2019; **20**(1): 108–117.  
[PubMed Abstract](#) | [Publisher Full Text](#) | [Free Full Text](#)
24. Assadi H, Grafton-Clarke C, Demirkiran A, *et al.*: **Mitral regurgitation quantified by CMR 4D-flow is associated with microvascular obstruction post reperfused ST-segment elevation myocardial infarction.** *BMC Res Notes.* 2022; **15**(1): 181.  
[PubMed Abstract](#) | [Publisher Full Text](#) | [Free Full Text](#)
25. Garg P, Broadbent DA, Swoboda PP, *et al.*: **Acute Infarct Extracellular Volume Mapping to Quantify Myocardial Area at Risk and Chronic Infarct Size on Cardiovascular Magnetic Resonance Imaging.** *Circ Cardiovasc Imaging.* 2017; **10**(7): e006182.  
[PubMed Abstract](#) | [Publisher Full Text](#)
26. Bogren HG, Buonocore MH: **4D Magnetic Resonance Velocity Mapping of Blood Flow Patterns in the Aorta in Young vs. Elderly Normal Subjects.** *J Magn Reson Imaging.* 1999; **10**(5): 861–9.  
[PubMed Abstract](#) | [Publisher Full Text](#)
27. Lorenz R, Bock J, Barker AJ, *et al.*: **4D flow magnetic resonance imaging in bicuspid aortic valve disease demonstrates altered distribution of aortic blood flow helicity.** *Magn Reson Med.* 2014; **71**(4): 1542–53.  
[PubMed Abstract](#) | [Publisher Full Text](#) | [Free Full Text](#)
28. Hope MD, Wrenn J, Sigovan M, *et al.*: **Imaging biomarkers of aortic disease: increased growth rates with eccentric systolic flow.** *J Am Coll Cardiol.* 2012; **60**(4): 356–7.  
[PubMed Abstract](#) | [Publisher Full Text](#)
29. Hope TA, Markl M, Wigström L, *et al.*: **Comparison of flow patterns in ascending aortic aneurysms and volunteers using four-dimensional magnetic resonance velocity mapping.** *J Magn Reson Imaging.* 2007; **26**(6): 1471–9.  
[PubMed Abstract](#) | [Publisher Full Text](#)
30. Markl M, Draney MT, Hope MD, *et al.*: **Time-resolved 3-dimensional velocity mapping in the thoracic aorta: visualization of 3-directional blood flow patterns in healthy volunteers and patients.** *J Comput Assist Tomogr.* 2004; **28**(4): 459–68.  
[PubMed Abstract](#) | [Publisher Full Text](#)
31. Sigovan M, Hope MD, Dyverfeldt P, *et al.*: **Comparison of four-dimensional flow parameters for quantification of flow eccentricity in the ascending aorta.** *J Magn Reson Imaging.* 2011; **34**(5): 1226–30.  
[PubMed Abstract](#) | [Publisher Full Text](#)
32. Safar M, Benessiano JR, Hornysk AL: **Asymmetric septal hypertrophy and borderline hypertension.** *Int J Cardiol.* 1982; **2**(1): 103–8.  
[PubMed Abstract](#) | [Publisher Full Text](#)
33. Maron BJ, Edwards JE, Epstein SE: **Disproportionate ventricular thickening in patients with systemic hypertension.** *Chest.* 1978; **73**(4): 466–70.  
[PubMed Abstract](#) | [Publisher Full Text](#)
34. Verdecchia P, Porcellati C, Zampi I, *et al.*: **Asymmetric left ventricular remodeling due to isolated septal thickening in patients with systemic hypertension and normal left ventricular masses.** *Am J Cardiol.* 1994; **73**(4): 247–52.  
[PubMed Abstract](#) | [Publisher Full Text](#)
35. Weiss EK, Jarvis K, Maroun A, *et al.*: **Systolic reverse flow derived from 4D flow cardiovascular magnetic resonance in bicuspid aortic valve is associated with aortic dilation and aortic valve stenosis: a cross sectional study in 655 subjects.** *J Cardiovasc Magn Reson.* 2023; **25**(1): 3.  
[PubMed Abstract](#) | [Publisher Full Text](#) | [Free Full Text](#)
36. Barker AJ, Lanning C, Shandas R: **Quantification of hemodynamic wall shear stress in patients with bicuspid aortic valve using phase-contrast MRI.** *Ann Biomed Eng.* 2010; **38**(3): 788–800.  
[PubMed Abstract](#) | [Publisher Full Text](#) | [Free Full Text](#)
37. Zhong L, Keong Poh K, Ching Lee L, *et al.*: **Attenuation of Stress-based Ventricular Contractility in Patients with Heart Failure and Normal Ejection Fraction.** *Ann Acad Med Singap.* 2011; **40**(4): 179–85.  
[PubMed Abstract](#) | [Publisher Full Text](#)
38. Xenos M, Karakitsos D, Labropoulos N, *et al.*: **Comparative study of flow in right-sided and left-sided aortas: numerical simulations in patient-based models.** *Comput Methods Biomech Biomed Engin.* 2015; **18**(4): 414–25.  
[PubMed Abstract](#) | [Publisher Full Text](#)
39. Feola M, Testa M, Ferreri C, *et al.*: **The Analysis of Arterial Stiffness in Heart Failure Patients in Comparison with Healthy Subjects and Patients with Cardiovascular Risk Factors.** *J Clin Med.* 2019; **8**(10): 1721.  
[PubMed Abstract](#) | [Publisher Full Text](#) | [Free Full Text](#)
40. Anastasio F, Testa M, Ferreri C, *et al.*: **The Analysis of Arterial Stiffness in Heart Failure Patients: The Prognostic Role of Pulse Wave Velocity, Augmentation Index and Stiffness Index.** *J Clin Med.* 2022; **11**(12): 3507.  
[PubMed Abstract](#) | [Publisher Full Text](#) | [Free Full Text](#)
41. Shah M, de A Inácio MH, Lu C, *et al.*: **Environmental and genetic predictors of human cardiovascular ageing.** *Nat Commun.* 2023; **14**(1): 4941.  
[PubMed Abstract](#) | [Publisher Full Text](#) | [Free Full Text](#)
42. Zhao X, Garg P, Assadi H, *et al.*: **Aortic flow is associated with aging and exercise capacity.** *Eur Heart J Open.* 2023; **3**(4): oead079.  
[PubMed Abstract](#) | [Publisher Full Text](#) | [Free Full Text](#)

# Open Peer Review

Current Peer Review Status:  

---

## Version 2

Reviewer Report 14 March 2024

<https://doi.org/10.21956/wellcomeopenres.23435.r76057>

© 2024 Bennett J. This is an open access peer review report distributed under the terms of the [Creative Commons Attribution License](#), which permits unrestricted use, distribution, and reproduction in any medium, provided the original work is properly cited.



**Jonathan Bennett**

University College London, London, UK

The authors have clarified the selection criteria for HFpEF patients combining symptomatic status and recently developed CMR estimations of pulmonary capillary wedge pressure. Additionally, data has been provided comparing 2D and 4D measurements with a low in-subject variation and co-efficient of the mean.

**Competing Interests:** No competing interests were disclosed.

**Reviewer Expertise:** Cardiac magnetic resonance, aortic valve disease, HFpEF, aging, preventive cardiology, heart-brain interactions.

**I confirm that I have read this submission and believe that I have an appropriate level of expertise to confirm that it is of an acceptable scientific standard.**

---

## Version 1

Reviewer Report 01 March 2024

<https://doi.org/10.21956/wellcomeopenres.22355.r72474>

© 2024 Bennett J. This is an open access peer review report distributed under the terms of the [Creative Commons Attribution License](#), which permits unrestricted use, distribution, and reproduction in any medium, provided the original work is properly cited.



**Jonathan Bennett**

<sup>1</sup> University College London, London, UK

<sup>2</sup>

University College London, London, UK

This article investigates age-related and heart failure with preserved ejection fraction (HFpEF) related differences in aortic flow dynamics. It aims to describe these variances by assessing novel markers of aortic flow hemodynamics using cardiac magnetic resonance (CMR) two-dimensional phase contrast flow measurements in young healthy controls, older healthy controls, and HFpEF patients.

*Title and abstract:*

The title is short and non-descriptive of the methods or type of abnormal flows detected – the authors could expand the title to give potential readers more insight into the article.

The abstract is clear and succinct and relates to the findings reported in the full manuscript.

The authors state the use of two-dimensional phase contrast CMR data as the method of acquisition in the abstract, however methods state that the data was derived from an initial 4D flow acquisition – the authors could be more specific in this respect.

*Introduction:*

The introduction is clear with its rationale for the study, having identified that aortic flow hemodynamics are abnormal in bicuspid aortic valve disease and that this relates to impaired aortic conduit function. The main objective for the study is clearly stated.

*Methods:*

The HFpEF cases were included based upon a confirmed diagnosis of HFpEF by CMR – the authors could expand on what would be considered diagnostic of HFpEF on CMR considering it is less commonly used compared to echocardiography. Also, an explicit statement of the symptomatic status of HFpEF patients for clarity.

The CMR protocol and analysis is well described. The authors expertly describe the various aortic hemodynamic parameters measured in bullet point form that is very useful for the reader.

The authors state that if 4D flow wasn't available 2D phase-contrast flow was used instead, some clarity regarding whether some patients had 2D phase-contrast compared with the 2D phase-contrast derived from 4D acquisition would be beneficial, and whether there was any analysis as to whether impact on results.

Figure 1 is clear in illustrating the methods.

*Results:*

The HFpEF group is reported as having 12 (52%) atrial fibrillations, and presumably the other groups all in sinus rhythm. It is not explicit as to what rhythm the HFpEF patients were in during image acquisition and the effect that this may have on the aortic flow haemodynamics – a statement on how atrial fibrillation was dealt with within the study would be useful.

The results section is clearly and logically presented taking the reader through the results of the main groups. The authors do further sub-group analysis of age-matching to confirm that aortic haemodynamic differences between these groups are unlikely to be a factor of age.

Figures are clear and well described.

*Discussion:*

The authors state that the aortic haemodynamics have a higher sensitivity to detect changes early in the HFpEF disease process – however it is unclear as to how they came to this conclusion and what they would define as early HFpEF and whether this is how they would define their HFpEF cohort.

The limitations are well described and highlight the small sample sizes used in the study that limits the generalizability in the study, however considering the relatively novel nature of the measurements in these populations this study serves as a good starting point for future research.

*Ethics:*



No ethical issues noted.

*Summary:*

The authors present a well-described and analyzed comparison of aortic flow hemodynamics in three distinct cohorts, identifying potential future biomarkers. The methodology is robust, and writing style is clear, guiding the reader through the manuscript. They acknowledge limitations in sample size and address age differences between the cohorts.

Areas for clarification:

- Specific inclusion criteria for HFpEF via CMR, an uncommon technique for identifying HFpEF.
- Integration of atrial fibrillation within the HFpEF cohort into aortic flow measurements and its potential impact on results.
- Definition of "early HFpEF" and its relevance to the HFpEF group in this study.
- Clarification on whether all patients underwent 4D flow acquisition converted to 2D phase contrast or if some only had initial 2D phase contrast acquisition, and any analysis conducted to assess methodological differences.

Addressing these points will enhance the paper's value by providing early insights into potential biomarkers and mechanisms in HFpEF for future research in this critical field.

**Is the work clearly and accurately presented and does it cite the current literature?**

Yes

**Is the study design appropriate and is the work technically sound?**

Yes

**Are sufficient details of methods and analysis provided to allow replication by others?**

Yes

**If applicable, is the statistical analysis and its interpretation appropriate?**

Yes

**Are all the source data underlying the results available to ensure full reproducibility?**

No

**Are the conclusions drawn adequately supported by the results?**

Yes

**Competing Interests:** No competing interests were disclosed.

**Reviewer Expertise:** Cardiac magnetic resonance, aortic valve disease, HFpEF, aging, preventive cardiology, heart-brain interactions.

**I confirm that I have read this submission and believe that I have an appropriate level of expertise to confirm that it is of an acceptable scientific standard, however I have significant reservations, as outlined above.**

Reviewer Report 27 February 2024

<https://doi.org/10.21956/wellcomeopenres.22355.r72475>

© 2024 Elamin N. This is an open access peer review report distributed under the terms of the [Creative Commons Attribution License](#), which permits unrestricted use, distribution, and reproduction in any medium, provided the original work is properly cited.



**Nadir Elamin** 

<sup>1</sup> Sheffield Teaching Hospital, Sheffield, UK

<sup>2</sup> Sheffield Teaching Hospital, Sheffield, UK

This study is exceptional in its structure and presentation. The authors effectively introduced the topic of heart failure with preserved ejection fraction (HFpEF) and the significance of aortic flow. The hypotheses and objectives of the study were clearly outlined, making it easy to understand the purpose of the research. To enhance the introduction further, it would be beneficial to elaborate slightly on the methods used to evaluate aortic flow and provide illustrations of why echocardiography may not be suitable for intricate flow assessment.

The methodology section is well-organised and clearly defined, allowing for seamless navigation between sections. The authors provided a comprehensive description of the study cohort and the standardised cardiovascular magnetic resonance (CMR) protocol, including image acquisition and data analysis. The different types of aortic flow assessments were also clearly defined in the methods section, and the statistical methods were well described, contributing to the reproducibility of the study.

The presentation of the results was clear and concise, with appropriate tables and figures used to support the findings. Nevertheless, incorporating a video comparing the aortic flow in the three groups would be beneficial. The authors effectively interpreted the results and integrated them with existing literature, highlighting the significance of aortic flow in HFpEF patients and older healthy control cohort. This advances our knowledge in both areas and provides opportunities for future research.

Overall, this study is of the highest quality, as evidenced by its coherent and well-organised structure. The paragraphs effectively summarised the objectives, and it is easy to create a list of bullet points from them. There are no grammatical or language errors that could impact the quality of the paper. This study will make a significant contribution to the literature on HFpEF patients, the innovative technology of CMR, and the importance of aortic flow in the aging population and patients with cardiovascular disease.

**Is the work clearly and accurately presented and does it cite the current literature?**

Yes

**Is the study design appropriate and is the work technically sound?**

Yes

**Are sufficient details of methods and analysis provided to allow replication by others?**

Yes

**If applicable, is the statistical analysis and its interpretation appropriate?**

Yes

**Are all the source data underlying the results available to ensure full reproducibility?**

Yes

**Are the conclusions drawn adequately supported by the results?**

Yes

**Competing Interests:** No competing interests were disclosed.

**Reviewer Expertise:** Anti-thrombotic therapy, Cardiovascular disease, Percutaneous coronary and structural intervention, Heart failure, Hamodynamic of the heart and vascular system.

**I confirm that I have read this submission and believe that I have an appropriate level of expertise to confirm that it is of an acceptable scientific standard.**

---