

This is a repository copy of *Decoupling speciation and extinction reveals both abiotic and biotic drivers shaped 250 million years of diversity in crocodile-line archosaurs*.

White Rose Research Online URL for this paper:

<https://eprints.whiterose.ac.uk/209918/>

Version: Published Version

---

**Article:**

Payne, Alexander R.D., Mannion, Philip D., Lloyd, Graeme T. et al. (1 more author) (2024) Decoupling speciation and extinction reveals both abiotic and biotic drivers shaped 250 million years of diversity in crocodile-line archosaurs. *Nature Ecology and Evolution*. pp. 121-132. ISSN 2397-334X

<https://doi.org/10.1038/s41559-023-02244-0>

---

**Reuse**

This article is distributed under the terms of the Creative Commons Attribution (CC BY) licence. This licence allows you to distribute, remix, tweak, and build upon the work, even commercially, as long as you credit the authors for the original work. More information and the full terms of the licence here:

<https://creativecommons.org/licenses/>

**Takedown**

If you consider content in White Rose Research Online to be in breach of UK law, please notify us by emailing [eprints@whiterose.ac.uk](mailto:eprints@whiterose.ac.uk) including the URL of the record and the reason for the withdrawal request.

# Decoupling speciation and extinction reveals both abiotic and biotic drivers shaped 250 million years of diversity in crocodile-line archosaurs

Received: 17 June 2022

Accepted: 26 September 2023

Published online: 4 December 2023

 Check for updates

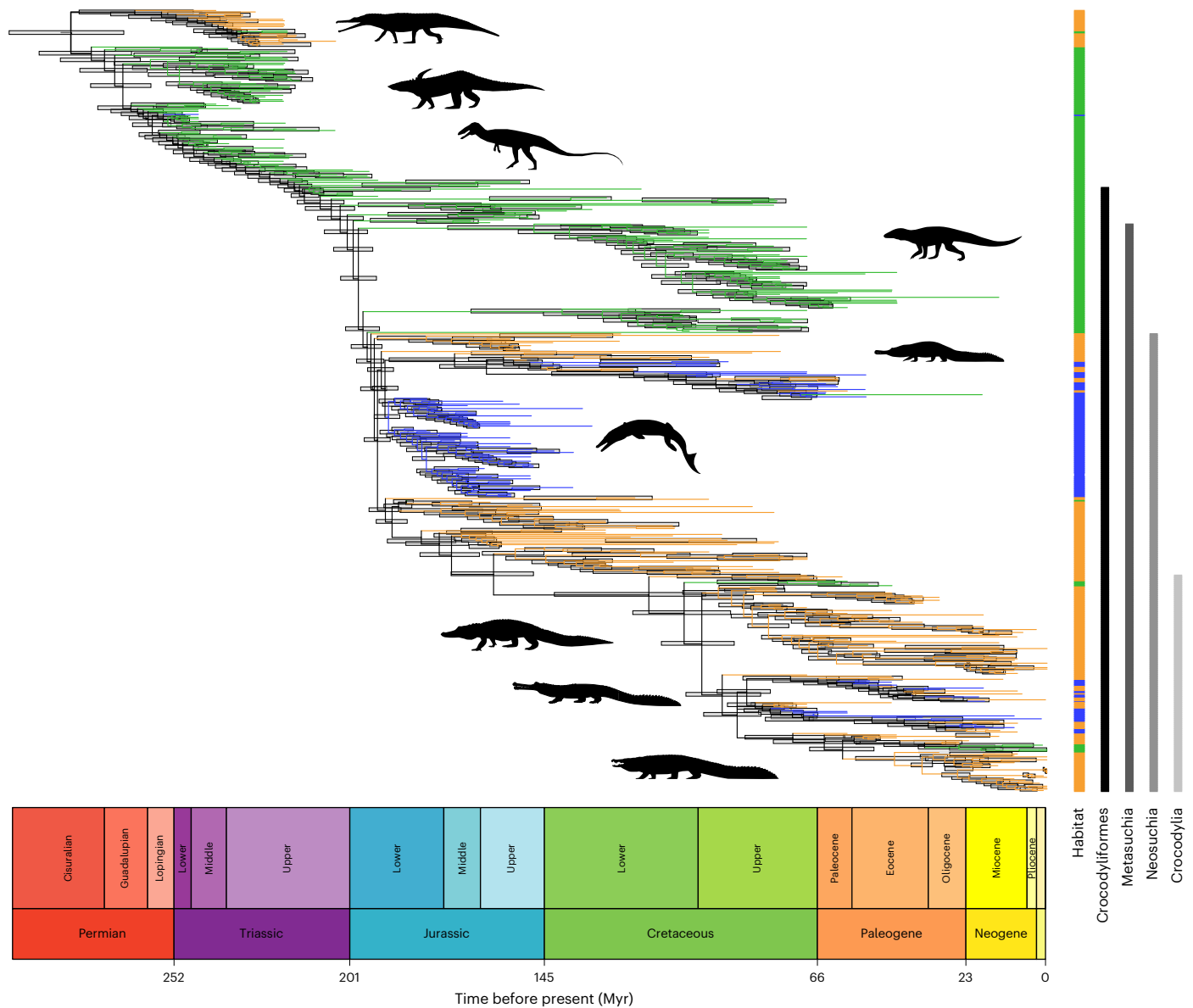
Alexander R. D. Payne<sup>1,2</sup>, Philip D. Mannion<sup>3</sup>, Graeme T. Lloyd<sup>4</sup> & Katie E. Davis<sup>1</sup>✉

Whereas living representatives of Pseudosuchia, crocodylians, number fewer than 30 species, more than 700 pseudosuchian species are known from their 250-million-year fossil record, displaying far greater ecomorphological diversity than their extant counterparts. With a new time-calibrated tree of >500 species, we use a phylogenetic framework to reveal that pseudosuchian evolutionary history and diversification dynamics were directly shaped by the interplay of abiotic and biotic processes over hundreds of millions of years, supported by information theory analyses. Speciation, but not extinction, is correlated with higher temperatures in terrestrial and marine lineages, with high sea level associated with heightened extinction in non-marine taxa. Low lineage diversity and increased speciation in non-marine species is consistent with opportunities for niche-filling, whereas increased competition may have led to elevated extinction rates. In marine lineages, competition via increased lineage diversity appears to have driven both speciation and extinction. Decoupling speciation and extinction, in combination with ecological partitioning, reveals a more complex picture of pseudosuchian evolution than previously understood. As the number of species threatened with extinction by anthropogenic climate change continues to rise, the fossil record provides a unique window into the drivers that led to clade success and those that may ultimately lead to extinction.

Global temperature, atmospheric CO<sub>2</sub>, ocean acidification and sea level are all predicted to continue to rise<sup>1</sup>, and projected climate scenarios could effectively reverse as much as 50 million years of long-term cooling<sup>2</sup>. These anthropogenically driven environmental changes are already exerting a profound effect on extant biodiversity, with rates of extinction approaching those of the ‘big five’ mass extinctions of the

geological past<sup>3</sup>, and new biotic interactions resulting from climatically driven<sup>4</sup> and human-mediated<sup>5</sup> geographic shifts in species ranges. Yet, through geological time, the diversity of life on Earth has always been shaped by changes in the physical environment<sup>6</sup> and/or by fluctuations in biotic interactions<sup>7</sup>. In reality, it is likely that some combination of these abiotic and biotic factors is responsible for the diversification

<sup>1</sup>Department of Biology, University of York, York, UK. <sup>2</sup>Leverhulme Centre for Anthropocene Biodiversity, University of York, York, UK. <sup>3</sup>Department of Earth Sciences, University College London, London, UK. <sup>4</sup>Independent Researcher, Amble, UK. ✉e-mail: [katie.davis@york.ac.uk](mailto:katie.davis@york.ac.uk)



**Fig. 1 | Time-calibrated supertree of Pseudosuchia.** Maximum agreement subtree of 534 taxa, scaled to geological time. Terminal branches are colour coded according to ecology (blue, marine; green, terrestrial; orange, freshwater), and light grey node bars represent node age ranges (95% highest posterior density). Ecologies were mapped to branches using ITol v.6.8.1<sup>26</sup>. Taxa highlighted by silhouettes from PhyloPic (phylopic.org) to showcase pseudosuchian morphological disparity are (from top to bottom): Phytosauria,

Aetosauria, Poposaurioidea, Notosuchia, Tethysuchia, Thalattosuchia, Alligatoroidea, Gavialoidea and Crocodyloidea. Silhouettes from S. Hartman, D. Bogdanov, N. Tamura and M. Keesey are licensed under CC BY 3.0; A. Reindl licensed under CC BY 4.0; and F. Sayol, S. Traver and Jagged Fang Designs under CC0 1.0 Universal. The geological timescale was added using the R package ‘strap’ v.1.6-0<sup>27</sup>.

of many clades<sup>8,9</sup>. The evolutionary history of clade diversification can therefore provide crucial insights into the long-term impact of anthropogenically driven changes to the environment and biosphere on extant biodiversity.

Pseudosuchia is a clade of archosaurian reptiles, defined as all species more closely related to crocodylians than to birds<sup>10</sup>. Extant pseudosuchians are all members of Crocodylia, a group of semi-aquatic ambush predators found predominantly in freshwater habitats of the tropics<sup>11</sup>. Of the 25–27 extant species of Crocodylia currently recognized, seven are categorized as Critically Endangered, with a further four species identified as vulnerable, with declining populations<sup>12</sup>. Many species reside in low-lying areas, meaning that rising sea levels associated with global warming may irreversibly alter the habitats on which they depend<sup>13</sup>. Although extant pseudosuchians have low species richness, more than 700 extinct species are currently recognized

in the fossil record<sup>14–19</sup>. They first appear in the fossil record shortly after the Permian/Triassic mass extinction, 252 million years ago (Ma), and evolved to occupy a variety of habitats and niches, including large terrestrial carnivores, heavily armoured herbivores and fully marine forms<sup>10,20–24</sup>.

Extant Pseudosuchia is represented by very limited ecomorphological diversity compared to their extinct representatives, yet their closest living relatives, birds (Aves), have diversified to approximately 11,000 extant species<sup>25</sup>, showing a vast array of ecomorphological diversity<sup>26</sup>. This asymmetry in the fate of sister clades is a well-documented macroevolutionary phenomenon<sup>27–30</sup>, but how it arises is not well understood. In both Pseudosuchia and Aves, climate has been proposed as a major driver of diversity<sup>15,31–40</sup>. Modern birds radiated rapidly in the wake of the Cretaceous/Paleogene mass extinction, 66 Ma<sup>41,42</sup>, and continued to diversify throughout

the Cenozoic<sup>43</sup>—an era characterized by a general long-term cooling trend<sup>44</sup>. However, pseudosuchians were at their most diverse during periods of global warming<sup>15,35</sup>, with evidence for declining diversification correlated with the Cenozoic long-term global cooling trend<sup>15,34</sup>. The relative contribution of biotic factors is less evident<sup>22,39</sup>. A recent study provided an attempt to tease apart the relative roles of biotic and abiotic drivers of diversification dynamics of Crocodylia over the past 100 million years<sup>45</sup>. These authors found evidence that net diversification of crocodylians over macroevolutionary timescales has likely been shaped by both biotic and abiotic factors.

In this Article, we go further by evaluating the relative roles of abiotic and biotic factors on the entire evolutionary history of pseudosuchian diversification dynamics. We test the effects of environmental change and clade competition, via proxies, throughout the group's 250 million year evolutionary history with a time-calibrated phylogeny comprising more than 500 species. We demonstrate that pseudosuchian evolutionary history was shaped by the interplay of ecological niche with both biotic and abiotic processes over hundreds of millions of years, supported by a direct transfer of information from our abiotic and biotic time series to speciation and extinction rates.

## Results

### Pseudosuchian phylogeny

The resultant metatree (Fig. 1) contains 534 taxa and, to our knowledge, is the most inclusive pseudosuchian phylogeny published. The overall topology is broadly consistent with recent Crocodylomorpha supertrees<sup>22</sup>. The root of the tree is placed in the Permian, 282 Ma (95% interval, 266–299 Ma), with Crocodylomorpha and Crocodyliformes estimated to have originated in the Middle Triassic (240 Ma; 95% interval, 235–247 Ma) and Late Triassic (214 Ma; 95% interval, 210–219 Ma), respectively. Neosuchia is estimated to have originated in the Early Jurassic (195 Ma; 95% interval, 191–199 Ma), which is broadly consistent with previous estimates<sup>22,46</sup>. Crocodylia diverged in the mid-Cretaceous, 100 Ma (95% interval, 90–111 Ma), which is also consistent with recent studies<sup>47,48</sup>. Within Crocodylia, Alligatoroidea is recovered outside of the Crocodyloidea + Gavialoidea clade, reflecting the relationships of molecular, but not most morphological, analyses<sup>48,49</sup>.

### Diversification dynamics through time

Exclusively terrestrial pseudosuchians experienced their highest levels of diversity during the Triassic (Fig. 2), followed by a sharp decline over the Triassic/Jurassic boundary, 201 Ma, with only the crocodylomorph lineage surviving<sup>50</sup>. This is followed by low levels of diversity, speciation and extinction throughout the Jurassic and Early Cretaceous. Pseudosuchians regained high levels of diversity in the Late Cretaceous, following a period of heightened speciation rates that marked the notosuchian radiation<sup>51</sup>. Towards the end of the Cretaceous, terrestrial pseudosuchians experienced a sharp diversity decline, which continued across the Cretaceous/Paleogene boundary, with only sebecosuchian notosuchians surviving the mass extinction<sup>52</sup>. Diversity generally declined throughout the Cenozoic, with sebecosuchians disappearing in the Middle Miocene<sup>53</sup>. The last exclusively terrestrial group, the mekosuchine crocodyloids that were endemic to Oceania and first appeared in the fossil record in the early Eocene<sup>54</sup>, survived until the Holocene, only going extinct sometime in the past 4,000 years<sup>55</sup>.

Freshwater pseudosuchians reached an initial diversity peak during the Triassic, followed by a sharp decline at the Triassic/Jurassic boundary (Fig. 2). They subsequently radiated, reaching a peak in the Late Jurassic and Early Cretaceous. Although remaining generally high, diversity of freshwater species was volatile throughout the Cretaceous with generally high speciation, extinction and net diversification across the Cretaceous/Paleogene mass extinction event. During the Cenozoic, the highest diversity of freshwater species is observed during the Miocene, comprising members of Crocodylia<sup>15,40,56,57</sup>. Subsequently, numbers declined to that of present-day diversity.

The first major marine invasion followed the Triassic/Jurassic mass extinction (Fig. 2), with the rapid radiation of thalattosuchian crocodyliforms<sup>58,59</sup>, following which speciation rate, extinction rate and diversity all reached their highest levels by the Middle Jurassic. Thalattosuchians then experienced a sharp decrease in diversity and speciation and extinction rate at the end of the Jurassic. Although they do not return to Middle Jurassic levels, both speciation/extinction rates and lineage diversity in the marine realm increased during the Cretaceous (Fig. 2), mainly driven by the independent radiation of tethysuchians<sup>16</sup>, with an additional diversification of gavialoids in the latest Cretaceous<sup>60,61</sup>. Speciation rates, extinction rates and overall diversity were unaffected by the Cretaceous/Paleogene mass extinction, with both tethysuchians (primarily dyrosaurids) and gavialoids surviving<sup>16,61</sup>. Marine diversity reached another peak early in the Paleogene, driven primarily by gavialoids, including taxa traditionally regarded as early diverging tomistomines<sup>48</sup>. Subsequently, diversity and diversification rates were low, but relatively stable, in the marine realm (Fig. 2), before the extinction of all remaining fully marine lineages during the Plio-Pleistocene interval.

### Abiotic and biotic correlations

Overall, our results show that all three variables tested, global temperature, global sea level and lineages through time (LTT), influenced pseudosuchian diversification; however, the effects are not homogenous across ecologies (see Fig. 3 and Table 1 for full results). Here we only consider results that recovered mean correlation coefficient values of greater than  $\pm 0.1$  as all were statistically significant ( $P < 2.2 \times 10^{-16}$ ).

We find that warmer temperatures are associated with increased speciation in both marine and terrestrial lineages, with a strong positive correlation for both partitions, but do not recover any relationship with temperature in freshwater lineages. There is no evidence for a relationship between temperature and extinction rates in any of the ecological partitions. The interaction of speciation and extinction rates results in increased net diversification in both marine and terrestrial lineages with increasing global temperatures.

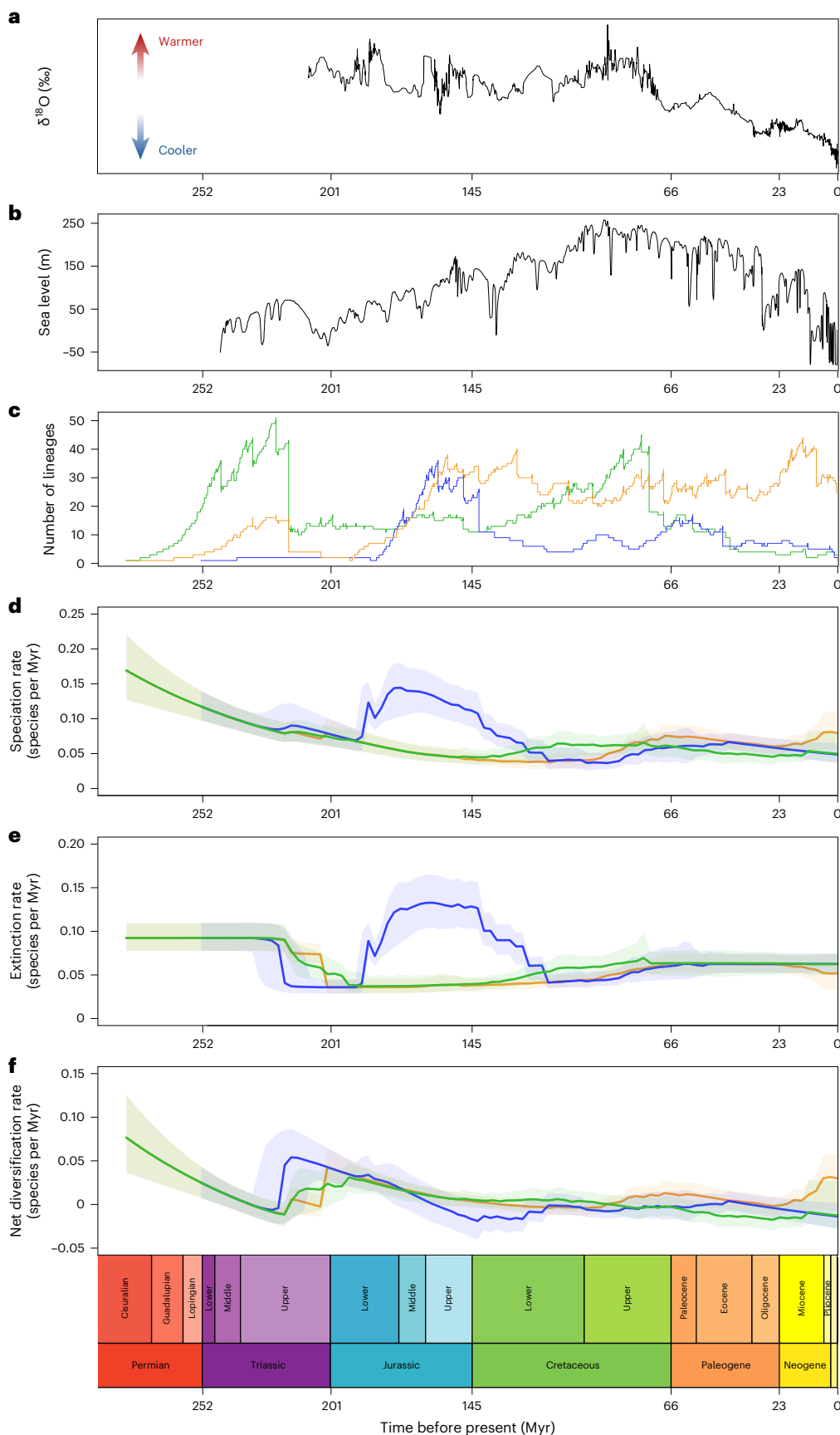
Lower sea levels are associated with increased speciation in terrestrial and freshwater lineages, whereas higher sea levels are associated with extinction in both these ecologies. There is no relationship recovered between sea level and either speciation or extinction for marine lineages. This results in a decrease in net diversification with higher sea levels for terrestrial and freshwater lineages.

For our LTT analyses, fewer numbers of lineages are strongly associated with increased speciation in terrestrial and freshwater ecologies, whereas increased numbers of lineages have a weak positive effect on marine lineages. Extinction shows a different pattern, with increased numbers of lineages associated with increased extinction in terrestrial and marine lineages, with the reverse observed in freshwater lineages; that is, fewer numbers of lineages is correlated with higher extinction rates in these ecologies. Net diversification decreases with increased numbers of lineages for terrestrial and freshwater lineages, whereas lineage diversity does not show any correlation with net diversification for marine lineages.

Due to the difficulties in confidently assigning some non-marine taxa to either terrestrial or freshwater habitats, we also analysed these categories together in a 'non-marine' partition. For this combined partition, we find no evidence for a relationship between temperature and speciation or extinction rates; however, we recover a negative correlation between sea level and speciation rates and a positive correlation between sea level and extinction rates. Net diversification is strongly negatively correlated with sea level. This partition is also strongly and negatively correlated with speciation, extinction and net diversification rates for LTT.

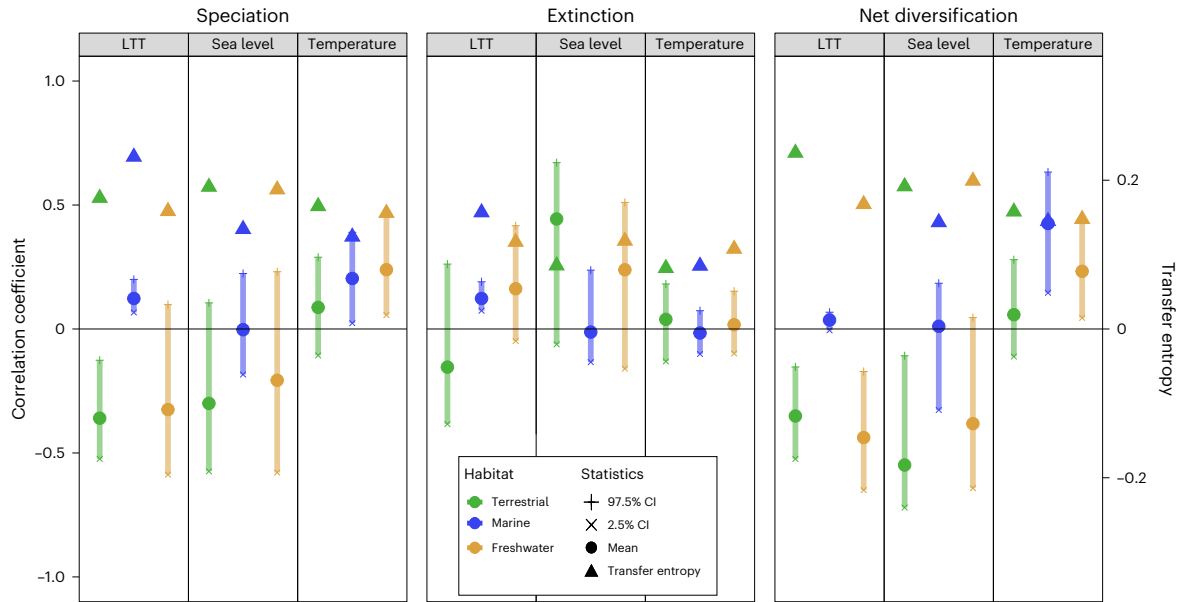
### Information transfer

For all but two of our analyses that indicate that one of our three variables is a driver of diversification, our transfer entropy results reveal the presence of information transfer (we considered our results to show



**Fig. 2 | Abiotic and biotic time series and pseudosuchian diversification dynamics.** **a**, Global temperature; **b**, eustatic sea level; **c**, lineage diversity; **d**, speciation rates; **e**, extinction rates; **f**, net diversification rates. All are scaled to geological time along the x axis. Panels **c–f** are colour coded according to ecology (blue, marine; green, terrestrial; orange, freshwater). In **d–f**, the solid

line represents the mean of 9,001 realizations of the diversification rate through time, while lighter shading represents the 95% CI. Diversification dynamics were plotted with the R package ‘BAMMtools’ v.2.1.10<sup>106</sup>, LTT were plotted with the R package ‘ape’ v.5.7-1<sup>113</sup>, and the geological timescale was added using the R package ‘strap’ v.1.6-0<sup>127</sup>.



**Fig. 3 | Time series correlations and transfer entropy results.** Results for all correlations showing the mean, 2.5% and 97.5% CIs, and transfer entropy results for each habitat partition for each time series (blue, marine; green, terrestrial; orange, freshwater).  $N = 9,001$  independent samples as derived from the

diversification rate analyses. All correlations are significant at  $P < 2.2 \times 10^{-16}$  as assessed with a Wilcoxon signed-rank test, while all transfer entropy values are significant at  $P < 0.001$  as assessed by a Markov block boot strap<sup>21</sup>.

**Table 1 | Time series correlations and transfer entropy results**

		Speciation				Extinction				Net diversification			
		Mean	2.5% CI	97.5% CI	Transfer entropy	Mean	2.5% CI	97.5% CI	Transfer entropy	Mean	2.5% CI	97.5% CI	Transfer entropy
Marine	Sea level	-0.003	-0.184	0.224	0.134	-0.012	-0.134	0.237	NA	0.011	-0.327	0.184	0.143
	Temperature	<i>0.204</i>	<i>0.024</i>	<i>0.390</i>	<i>0.124</i>	-0.016	-0.101	0.074	0.085	<i>0.425</i>	<i>0.146</i>	<i>0.633</i>	<i>0.145</i>
	LTT	<i>0.123</i>	<i>0.067</i>	<i>0.200</i>	<i>0.231</i>	<i>0.123</i>	<i>0.074</i>	<i>0.190</i>	<i>0.157</i>	0.036	-0.005	0.068	NA
Terrestrial	Sea level	-0.207	-0.579	0.231	0.187	0.239	-0.160	0.511	0.118	-0.382	-0.642	0.046	0.199
	Temperature	0.239	0.056	0.463	0.156	0.017	-0.099	0.152	0.108	0.233	0.045	0.438	0.148
	LTT	-0.325	-0.587	0.098	0.158	0.162	-0.048	0.416	0.117	-0.438	-0.650	-0.171	0.168
Freshwater	Sea level	-0.300	-0.574	0.105	0.191	0.444	-0.062	0.671	0.085	-0.549	-0.720	-0.108	0.192
	Temperature	0.087	-0.107	0.290	0.165	0.039	-0.131	0.182	0.082	0.058	-0.111	0.279	0.158
	LTT	-0.360	-0.524	-0.126	0.176	-0.154	-0.383	0.262	NA	-0.351	-0.524	-0.153	0.237
Non-marine	Sea level	-0.317	-0.604	0.121	0.182	0.329	-0.073	0.584	0.134	-0.517	-0.698	-0.114	0.184
	Temperature	0.090	-0.106	0.306	0.160	0.055	-0.104	0.209	0.113	0.043	-0.131	0.268	0.152
	LTT	-0.525	-0.696	-0.224	0.185	-0.253	-0.512	0.125	0.131	-0.470	-0.662	-0.215	0.208

Mean, 2.5% and 97.5% CIs and transfer entropy results are given for each habitat partition for each time series. All correlations are significant at  $P < 2.2 \times 10^{-16}$ , while all reported transfer entropy values are significant at  $P < 0.001$ . NA means that no significant transfer entropy values were found at that CI. Correlations with a correlation coefficient of greater than  $\pm 0.1$  are italicized.

some evidence of information transfer if they returned values  $> 0.1$ ; see Table 1). These exceptions are both found in freshwater lineage extinction rates—the first is sea level, which shows a positive correlation, but a low value (0.09) for information transfer. The second is LTT, which shows a negative correlation, but no significant results are returned for information transfer. Otherwise, our results are strongly congruent with the strength of the correlation (as measured by mean rate). All reported information transfer results are significant at  $P < 0.001$ , and only statistically significant results were retained (see Table 1 for full results).

#### Accounting for phylogenetic and temporal uncertainty

We also tested two alternative phylogenetic hypotheses—Thalattosuchia as the sister clade to Crocodyliformes, rather than Neosuchia, and excluding Phytosauria from Pseudosuchia. Furthermore, we explored the effect of temporal uncertainty on our results. Phylogenetic

uncertainty has no notable impact on our results, which are remarkably consistent regardless of the input phylogeny and in some instances yielded even stronger signals than our main results presented above. Temporal uncertainty has a more varied effect on the results, and the key differences are as follows: speciation in marine and terrestrial lineages is now positively correlated with sea level, whereas extinction in marine lineages is now positively correlated with sea level. Net diversification for these pairs of variables remains unchanged. Overall, our results remain unchanged by these sensitivity analyses. See Extended Data Figs. 1–9 for the full results of these analyses.

#### Discussion

Temperature has long been recognized as a driver of biological turnover<sup>6,62–64</sup>. Here we show that pseudosuchian speciation rates are positively correlated with fluctuations in temperature for both

marine and terrestrial ecologies, but not in freshwater taxa, whereas there is no clear relationship between temperature and extinction rate for any of our ecological partitions. The one exception to this might be marine lineages, which show a low positive correlation with extinction in our analyses that assess the impact of temporal variation. Previous work has found broadly congruent results, including a positive correlation between warmer temperatures and higher pseudosuchian diversity in general. However, all previous studies either have only evaluated taxonomic diversity or have not separated pseudosuchian taxa into these separate ecological categories<sup>15,38,40,45,65</sup>, whereas our study quantitatively shows the long-term effect of global warming on speciation rates in fully terrestrial pseudosuchians. Thermophysiology might explain why we see a positive correlation between temperature and speciation, with extant species ectothermic and characterized by a subtropical distribution, with heightened ecological sensitivity to ambient temperature<sup>11,66,67</sup>. Palaeohistological analyses indicate that although the thermophysiology of the earliest pseudosuchians was likely closer to that of endotherms<sup>68</sup>, the transition to ectothermy had occurred in the group at least by the time of the divergence of *Metasuchia* (the group comprising *Neosuchia* + *Notosuchia*)<sup>69</sup>, in the Early Jurassic. Although higher temperatures might have directly led to increased speciation rate, this also meant that more of the Earth was habitable for pseudosuchians<sup>15,34</sup>, with their fossils known from subpolar latitudes in the Eocene<sup>70</sup>. As such, the positive correlation between temperature and speciation rate might partly or primarily reflect a species-area effect, with higher speciation coincident with the latitudinal extension of the warm temperate climatic belt<sup>45</sup>. Speciation rate in freshwater pseudosuchians, however, does not appear to be related to fluctuations in global temperature. This is an unexpected finding, given that extant species are primarily freshwater<sup>66,67</sup>. One potentially confounding factor is the difficulty associated with assigning non-marine fossil taxa to either freshwater or terrestrial habitats. To account for this, we ran analyses with terrestrial and freshwater species combined into a non-marine category, but this also did not show any relationship between speciation rate and temperature. We therefore suggest that this absence of a correlation is a genuine result and not simply the result of difficulty assigning habitat states. One explanation could be that speciation in freshwater taxa is more closely tied to other environmental factors that we did not test, such as aridity<sup>15,71,72</sup>. A positive correlation between temperature and speciation rate and either no correlation, or a relatively smaller correlation, with extinction rate in marine pseudosuchians potentially reconciles conflicting results from previous studies that evaluated taxonomic diversity<sup>15,38,73</sup>, which is essentially a product of both rates.

We find that pseudosuchian speciation rates increase with lower sea levels in both terrestrial and freshwater lineages. Conversely, extinction rates for these lineages increase with higher sea levels, suggesting that sea level regressions led to increased speciation, whereas transgressions drove extinction. The net result of this is a negative correlation between net diversification and sea level for terrestrial pseudosuchians, which is in line with previous work<sup>15</sup>, in which either no relationship or a negative correlation was recovered between sea level and taxonomic diversity of non-marine pseudosuchians<sup>39</sup>. It is plausible that both terrestrial and freshwater taxa benefited from sea level regressions via the species area effect, whereby the creation of increased habitat availability allowed for increased diversification<sup>73–75</sup>. Conversely, marine transgressions might have led to higher rates of extinction in both terrestrial and freshwater lineages as a result of suitable habitat being lost during periods of continental flooding<sup>73,76</sup>. It is important to note that the results for speciation in terrestrial lineages were the most variable of our results when subjected to sensitivity analysis. Therefore, while our results are in line with previous work and our conclusions remain unchanged by our sensitivity analyses, we

cannot state with confidence that the impact of sea level on decoupled speciation and extinction rates in terrestrial pseudosuchians can be clearly delineated.

A lack of correlation between diversification rates of marine pseudosuchians and sea level is surprising and also contrasts with previous studies that have tended to recover a positive correlation<sup>38,39</sup>, at least with taxonomic diversity. A positive correlation between sea level and speciation for marine lineages is recovered when temporal variation is taken into account; therefore, our results might still be congruent with previous work. However, these results are from a random sample of just 20 trees, and therefore the maximum clade credibility results may still be representative of the results as a whole. We are therefore cautious in drawing strong conclusions at this stage.

One limitation of our abiotic correlation tests is the use of global proxies. This approach assumes that there is no spatial variation in environmental parameters, but this is patently not the case, especially for palaeotemperature<sup>77</sup>. If spatially explicit palaeoenvironmental data were available, a better solution would be to partition both the biotic and abiotic data geographically to obtain a clearer picture of the effect that temperature had on diversification at regional scales. Nevertheless, we believe that our global-scale analyses are still useful in identifying the relative role played by environmental parameters in shaping pseudosuchian diversity over macroevolutionary timescales, even if more precise conclusions cannot currently be drawn.

Diversity dependence, as a proxy for intra-clade competition, drives both speciation and extinction across all three of our ecological partitions. Both terrestrial and freshwater lineages have higher speciation rates when lineage diversity is low. This suggests that low lineage diversity results in opportunities for niche filling, accomplished through increased speciation rates, similar to what we might see in an adaptive radiation<sup>78–80</sup>. The radiation of *Neosuchia*, following the end-Triassic mass extinction, might be an example of such niche filling<sup>50</sup>. For terrestrial taxa, extinction rates are positively correlated with lineage diversity, which suggests that increased competition with more lineages leads to elevated rates of extinction<sup>8,80</sup>. This might potentially characterize the rise of pseudosuchians during the Triassic<sup>50</sup>, as well as patterns of turnover in notosuchian faunas in the Cretaceous<sup>51</sup>. Freshwater lineages show the opposite pattern, with higher extinction rates corresponding to low lineage diversity. However, standard deviation is high and confidence intervals (CIs) broad for freshwater taxa, and we therefore cannot be confident that this result is biologically meaningful. In marine lineages, both speciation and extinction rates are higher with increased lineage diversity. High speciation rates and similarly high extinction rates can result from rapid turnover<sup>81</sup>, as the traits that lead to elevated speciation rates are often the same ones that lead to higher rates of extinction<sup>82</sup>. It is therefore plausible that competition, as a result of higher lineage diversity in marine taxa, stimulated speciation while also driving extinction, as lineages were out-competed. Our analyses do not differentiate between intra-clade and inter-clade competition; therefore, the signal recovered might result from competition between marine clades or between lineages within clades. Qualitatively, such a scenario potentially corresponds to the following macroevolutionary trajectory: thalattosuchians declined as tethysuchians first appeared, with dyrosaurid tethysuchians and gavialoids only appearing towards the end of the Cretaceous, when most non-dyrosaurid tethysuchians disappeared<sup>16,60</sup>. The surviving marine lineages appear to have thrived after the Cretaceous/Paleogene mass extinction, which has been generally attributed to the vacancy of ecospace<sup>15,83</sup>.

It is also possible that competition between pseudosuchians and other clades played a role in shaping their diversity. For example, terrestrial and freshwater pseudosuchians might have been in competition with some dinosaurs; similarly, marine pseudosuchians might have competed with plesiosaurs, ichthyosaurs and mosasaurs in the Mesozoic, cetaceans from the Eocene onwards, and with sharks since

pseudosuchians first entered the marine realm. There are also other biotic factors at play that we have not considered here. One such factor is body size, with previous research showing that low body size disparity in crocodylians is associated with increased extinction risk<sup>45</sup> and that body size evolution might also be linked to environmental change<sup>22,65</sup>. The full picture of the role played by biotic variables in pseudosuchian macroevolution is therefore undoubtedly far more complex than so far revealed.

Our transfer entropy analyses are strongly supportive of our correlation results, with a high level of congruence indicating the presence of information transfer from the abiotic and biotic variables to diversification rate. The interaction between all our tested variables is most likely complex, and we would not expect to be able to perfectly reconstruct the precise impacts of each driver on diversification, as is reflected in our results. Nevertheless, it is clear that most of our statistically significant correlations show a clear transfer of information from one time series to another, which supports our interpretation that both environmental change and biotic competition played a role in driving speciation and extinction in Pseudosuchia. For marine lineages, speciation is most strongly associated with global temperature, whereas the closest association with extinction is competition. By contrast, speciation in terrestrial and freshwater lineages is most strongly linked to biotic competition, while extinction is most closely associated with sea level. Therefore, while we show that both biotic and abiotic drivers have shaped pseudosuchian macroevolution, their relative contributions differ, which is constrained by ecology.

In summary, we show that the diversification dynamics of Pseudosuchia have been shaped over macroevolutionary timescales by a complex interplay of biotic and abiotic factors, as well as ecology. These intrinsic biotic effects, often referred to as the 'Red Queen' hypothesis<sup>6</sup>, have been typically thought to operate at or within the species level and over geologically short timescales. By contrast, the effect of extrinsic changes in the physical environment, known as the 'Court Jester' hypothesis, is thought to operate over much longer timescales<sup>6</sup>. Recent research, however, shows an influence of biotic drivers at scales greater than 40 Myr<sup>84</sup>; therefore, the reality is undoubtedly more complex than previously characterized. Similar to the patterns observed in foraminifera<sup>9</sup> and sharks<sup>8,9</sup>, we find that neither the Red Queen nor the Court Jester was the dominant force in shaping pseudosuchian diversity through time; rather, we find evidence for a pluralistic model in which their interaction varies across ecologies. This unexpected complexity is revealed by the decoupling of speciation and extinction rates, which can only be evaluated by taking into account past diversity and the fossil record.

## Conclusion

In view of the current focus on using drivers of diversification rates as predictors of clade responses to anthropogenically driven climate change, our findings show that fossils must be included in diversification analyses if we wish to make predictions about the drivers of both speciation and extinction in today's at-risk clades. This is becoming increasingly important as the number of species threatened with extinction by climate change continues to rise and is particularly consequential for clades that have very low extant diversity such as today's remaining pseudosuchians. Although many studies have explored drivers of diversification in a phylogenetic framework<sup>30,85–92</sup>, our study combines both extant and extinct taxa to explicitly model both speciation and extinction rates in a phylogenetic framework, allowing a more nuanced perspective of the drivers of diversification through time. Furthermore, this type of diversification study has not previously been carried out on such a temporally extensive group: similar studies do not yet exist for other vertebrate groups with comparable evolutionary histories. The fossil record provides a unique window onto the likely drivers that led to lineage success and decline, and that may ultimately lead to their extinction, and the inclusion of extinct taxa in

diversification analyses is one way in which the potential of the fossil record can be leveraged.

## Methods

### Phylogenetic tree construction

The phylogeny was generated via a 'metatree' approach<sup>93</sup>. This approach is similar to formal supertree analysis but differs in that the input is not published trees but the original character matrices or sequence alignments that are themselves reanalysed to generate more complete sets of source topologies. Initially, we input all 1,594 available matrices classified as non-dinosaurian archosauromorphs obtained from an online resource<sup>94</sup> (see Supplementary Information 1 for a full list). Only those matrices containing at least three pseudosuchian taxa were retained for additional analysis. From these matrices, the most parsimonious trees (MPTs) were generated until all unique bipartitions for a data set were sampled. Taxonomy was reconciled via the Paleobiology Database (<https://paleobiodb.org/>)<sup>95</sup> to standardize nomenclature (for example, remove synonyms). These were then encoded into a matrix representation with parsimony matrix, using standard Baum and Ragan coding<sup>96</sup>. We also included a molecular tree containing 23 extant taxa<sup>97</sup>. This tree was upweighted in the final matrix to account for the disproportionate influence of morphology on the position of *Gavialis gangeticus*<sup>97</sup>. The resulting matrix contained 804 taxa (see Supplementary Data 1 for the final matrix representation with parsimony matrix). We analysed the matrix in TNT v1.5<sup>98</sup> using the 'xmult=10' option and ran 1,000 replicates for the analysis. The analysis found 1,320 MPTs of length 1,100,897. The strict and majority rule consensus trees were very poorly resolved, and as the diversification analyses require fully resolved trees, we inferred a Maximum Agreement Subtree (MAST) in PAUP\* 4.0a165<sup>99</sup> to remove unstable taxa. Due to computational constraints, we computed the MAST from a random sample of 10% of the MPTs. After removal of unstable taxa via MAST construction, the final phylogeny contained 534 taxa and was fully resolved.

### Time calibration

Parsimony methods do not return trees with meaningful branch lengths; therefore, we used external fossil age data to time-calibrate the tree based on the Paleobiology Database and a review of the literature<sup>15,17</sup>. Age ranges were standardized to the Geological Society of America Time Scale v5.0<sup>100</sup>, with regional ages being converted to their equivalent age in the global timescale (see Supplementary Data 2 for fossil age data). We then used the fossilized birth–death tip dating method, implemented in BEAST2 v2.6.0<sup>101</sup>, to time-scale the phylogeny. Molecular data<sup>97</sup> were used to calibrate the divergence times of extant lineages, whereas the stratigraphically oldest known occurrence of each fossil species, which is clearly attributable to that taxon using an autapomorphy-based approach, was used to calibrate divergence dates for extinct taxa. We set our phylogeny as a topological constraint and set uniform calibration priors based on the fossil occurrence dates. The root of the tree was set to a minimum age of 260 Ma, which is currently the oldest supported age for the origin of Pseudosuchia<sup>21,102,103</sup>. The proportion of living species sampled was set to 0.88 on the basis that *Crocodylus suchus*, *G. gangeticus*, *Mecistops leptorhynchus* and *Paleosuchus trigonatus* were not present in the final topology, whereas all other settings were set to the default. We ran the analysis for 10,000,000 generations, resulting in a posterior distribution of 9,001 phylogenies. We used TreeAnnotator, implemented in BEAST2<sup>101</sup>, to compute the maximum clade credibility tree for use in all downstream analyses. See Supplementary Data 3 for the BEAST2 input file.

### Diversification dynamics

Diversification dynamics were modelled from the phylogeny via Fossil BMM v.2.6<sup>104</sup>, which is an extension of the BMM Bayesian framework<sup>105</sup> that uses a Markov Chain Monte Carlo approach to



calculate diversification rates. It is explicitly designed to allow the calculation of both speciation and extinction rates, as well as net diversification rates, in phylogenies that contain extinct taxa. The number of fossil occurrences of taxa sampled in the phylogeny was set to 1,639, based on data in the Paleobiology Database and in recent publications<sup>15,17</sup>. Synonyms were removed from these data to establish the number of unique fossil operational taxonomic units, with this value then being combined with the number of extant species without fossil data to give the total number of known pseudosuchian taxa. From this, we calculated a global sampling fraction of 0.7. Four chains were executed for the analysis, each with a total of 30 million generations executed, with a minimum clade size of five taxa used to aid convergence. Ten thousand of the results were stored, with 10% discarded as 'burn-in', leaving 9,001 samples for subsequent analysis with regards to temperature correlation. For details of the Fossil BAMM set-up, see Supplementary Data 4.

To evaluate diversification dynamics with respect to environmental change, we first subdivided the tree into marine, freshwater and exclusively terrestrial taxa, based on previous compilations<sup>15,24,38</sup>, coupled with an exhaustive literature search (see Supplementary Data 2 for details). We used the R package BAMMtools<sup>106</sup> to extract subtrees for each of these categories from the main supertree. We then used the speciation, extinction and net diversification rate curves obtained from Fossil BAMM<sup>104</sup>, extracted with BAMMtools<sup>106</sup>, to test for correlations against two global palaeotemperature<sup>107,108</sup> and eustatic sea level<sup>109</sup> time series (Supplementary Data 2). These data sets were chosen for two reasons: (1) the extent of geological time covered and (2) the relatively smooth nature of the time series. A more recently published sea level data set<sup>110</sup> only extends back as far as 179 Ma, while other temperature data sets<sup>111</sup> are not smooth enough to correlate against diversification rate data. Before carrying out the correlations, the temperature time series was smoothed using a Tukey running mean to remove noise. For all environmental time series, the values were linearly interpolated to the same time values available in the diversification rate data, which occurred in 0.1 Myr bins. We used all 9,001 simulations as modelled from the phylogeny, resulting in a distribution for each set of rates and environmental variables (Table 1). We used detrended cross-correlation analysis to account for non-stationarity and autocorrelation between time series<sup>112</sup>. To test for diversity dependence as an indicator of biotic interactions, we also correlated the number of LTT with speciation, extinction and net diversification rates. We estimated the LTT for each ecology using the R package 'ape' v.5.7-1<sup>113</sup>, then correlated the resulting time series against all 9,001 realizations of the speciation, extinction and net diversification curves. We then tested for significance using a Wilcoxon signed-rank test. As for the environmental analyses, we used detrended cross-correlation analysis to account for non-stationarity and autocorrelation between time series<sup>112</sup>. All analyses were carried out in R v.3.6.0<sup>114</sup>.

### Information transfer

Information theory has previously been used to test for causality in palaeontological and ecological data sets<sup>115–117</sup>. Transfer entropy is a directional method for measuring information that quantifies how temporal change in one time series informs that of another<sup>118</sup>. Transfer entropy is based on the mutual information method<sup>118</sup> but takes into account the direction of information transfer by assuming that the processes can be described by a Markov model. It reduces to a linear Granger causality process, whereby a signal in one time series gives a linear response to the second time series. However, it makes fewer assumptions regarding the linearity of the processes involved and is therefore more suitable for analysing causality when the processes involved are unknown<sup>119,120</sup>, as is the case for information flow in natural systems. All our transfer entropy analyses were implemented in R<sup>114</sup> using the package RTransferEntropy v.0.2.21<sup>121</sup>. Our data were placed into bins of equal length, and we allowed the number of bins to vary to minimize the number of bins containing either zero or single counts,

as this can lead to bias in the results<sup>115</sup>. To determine the number of Markov states that best fit the system, we used a hidden Markov model, implemented in the R package 'depmixS4' v.1.5-0<sup>122</sup>, varying the number of states between 2 and 20. The number of states in the model with the lowest Akaike Information Criterion value was then used in the transfer entropy calculation. We then calculated transfer entropy 100 times for each pair of time series, that is, speciation and extinction rates for each habitat partition with each of our two abiotic variables and our one biotic variable. A higher positive value of transfer entropy indicates more information transfer. Statistical significance was calculated at the 95% confidence level, and only statistically significant results were retained (Table 1).

### Accounting for phylogenetic and temporal uncertainty

Both phylogenetic and temporal uncertainty can impact the results of large-scale macroevolutionary studies, and it has been questioned whether or not large, synthetic phylogenies accurately represent the underlying data and are therefore suitable for conducting macroevolutionary analyses<sup>123</sup>. Therefore, we carried out additional analyses to assess the impact of both phylogenetic and temporal variation on our results.

To assess phylogenetic uncertainty, we ran our analyses on two alternative topologies, one with Thalattosuchia as sister to Crocodyliformes and one with Phytosauria excluded from Pseudosuchia. These alternative topologies represent the most significant source of phylogenetic uncertainty within Pseudosuchia<sup>124,125</sup>. The impact of temporal variation on our results was achieved by taking a sample of 20 topologies from the posterior distribution, each of which were identical topologically but with differing node dates. This generated an additional 22 phylogenies in total (2 with an alternative topology and 20 with the same topology but differing node dates). Our full set of analyses was re-run for each of these 22 trees to assess whether, and to what extent, phylogenetic and temporal uncertainty impact upon our results.

### Reporting summary

Further information on research design is available in the Nature Portfolio Reporting Summary linked to this article.

### Data availability

The authors declare that all data supporting the findings of this study are available within the article and its supplementary information files.

### Code availability

For equity-related reasons custom code will be available on request to the corresponding author.

### References

1. Allan, R. P. *Climate Change 2021: The Physical Science Basis: Working Group I Contribution to the Sixth Assessment Report of the Intergovernmental Panel on Climate Change* (WMO, IPCC Secretariat, 2021).
2. Burke, K. D. et al. Pliocene and Eocene provide best analogs for near-future climates. *Proc. Natl Acad. Sci. USA* **115**, 13288–13293 (2018).
3. Ceballos, G. et al. Accelerated modern human-induced species losses: entering the sixth mass extinction. *Sci. Adv.* **1**, e1400253 (2015).
4. Freeman, B. G., Lee-Yaw, J. A., Sunday, J. M. & Hargreaves, A. L. Expanding, shifting and shrinking: the impact of global warming on species' elevational distributions. *Glob. Ecol. Biogeogr.* **27**, 1268–1276 (2018).
5. Harper, G. A. & Bunbury, N. Invasive rats on tropical islands: their population biology and impacts on native species. *Glob. Ecol. Conserv.* **3**, 607–627 (2015).

6. Benton, M. J. The Red Queen and the Court Jester: species diversity and the role of biotic and abiotic factors through time. *Science* **323**, 728–732 (2009).
7. Strotz, L. C. et al. Getting somewhere with the Red Queen: chasing a biologically modern definition of the hypothesis. *Biol. Lett.* **14**, 20170734 (2018).
8. Condamine, F. L., Romieu, J. & Guinot, G. Climate cooling and clade competition likely drove the decline of lamniform sharks. *Proc. Natl Acad. Sci. USA* **116**, 20584–20590 (2019).
9. Ezard, T. H. G., Aze, T., Pearson, P. N. & Purvis, A. Interplay between changing climate and species' ecology drives macroevolutionary dynamics. *Science* **332**, 349–351 (2011).
10. Nesbitt, S. J. *The Early Evolution of Archosaurs: Relationships and the Origin of Major Clades*. Thesis, Columbia Univ. (2009).
11. Grigg, G. *Biology and Evolution of Crocodylians* (Csiro, 2015).
12. Baillie, J., Hilton-Taylor, C., Stuart, S. N. & IUCN Species Survival Commission. *2004 IUCN Red List of Threatened Species: A Global Species Assessment* (IUCN, 2004).
13. Somaweera, R., Brien, M. L., Platt, S. G., Manolis, C. & Webber, B. L. Direct and indirect interactions with vegetation shape crocodylian ecology at multiple scales. *Freshw. Biol.* **64**, 257–268 (2018).
14. Stubbs, T. L. et al. Ecological opportunity and the rise and fall of crocodylomorph evolutionary innovation. *Proc. Biol. Sci.* **288**, 20210069 (2021).
15. Mannion, P. D. et al. Climate constrains the evolutionary history and biodiversity of crocodylians. *Nat. Commun.* **6**, 8438 (2015).
16. Jouve, S. & Jalil, N.-E. Paleocene resurrection of a crocodylomorph taxon: biotic crises, climatic and sea level fluctuations. *Gondwana Res.* **85**, 1–18 (2020).
17. Mannion, P. D., Chiarenza, A. A., Godoy, P. L. & Cheah, Y. N. Spatiotemporal sampling patterns in the 230 million year fossil record of terrestrial crocodylomorphs and their impact on diversity. *Palaeontology* **62**, 615–637 (2019).
18. Leardi, J. M., Yáñez, I. & Pol, D. South American crocodylomorphs (Archosauria; Crocodylomorpha): a review of the early fossil record in the continent and its relevance on understanding the origins of the clade. *J. South Am. Earth Sci.* **104**, 102780 (2020).
19. Foth, C., Sookias, R. B. & Ezcurra, M. D. Rapid initial morphospace expansion and delayed morphological disparity peak in the first 100 million years of the archosauromorph evolutionary radiation. *Front. Earth Sci. Chin.* **9**, 723973 (2021).
20. Buffetaut, E. Radiation évolutive, paléocologie et biogéographie des crocodiliens mesosuchiens. *Mem. S. Geo. F.* **60**, 88 (1981).
21. Ezcurra, M. D. & Butler, R. J. The rise of the ruling reptiles and ecosystem recovery from the Permo-Triassic mass extinction. *Proc. Biol. Sci.* **285**, 20180361 (2018).
22. Godoy, P. L., Benson, R. B. J., Bronzati, M. & Butler, R. J. The multi-peak adaptive landscape of crocodylomorph body size evolution. *BMC Evol. Biol.* **19**, 167 (2019).
23. Melstrom, K. M. & Irmis, R. B. Repeated evolution of herbivorous crocodyliforms during the age of dinosaurs. *Curr. Biol.* **29**, 2389–2395.e3 (2019).
24. Wilberg, E. W., Turner, A. H. & Brochu, C. A. Evolutionary structure and timing of major habitat shifts in Crocodylomorpha. *Sci. Rep.* **9**, 514 (2019).
25. *State of the World's Birds: Taking the Pulse of the Planet* (BirdLife International, 2018).
26. Pigot, A. L. et al. Macroevolutionary convergence connects morphological form to ecological function in birds. *Nat. Ecol. Evol.* **4**, 230–239 (2020).
27. Hoffman, A. Mass extinctions, diversification, and the nature of paleontology. *Rev. Esp. Paleontol.* **1**, 101–107 (1986).
28. von Reumont, B. M. et al. Pancrustacean phylogeny in the light of new phylogenomic data: support for Remipedia as the possible sister group of Hexapoda. *Mol. Biol. Evol.* **29**, 1031–1045 (2012).
29. Laurent, S., Robinson-Rechavi, M. & Salamin, N. Detecting patterns of species diversification in the presence of both rate shifts and mass extinctions. *BMC Evol. Biol.* **15**, 157 (2015).
30. Davis, K. E., De Grave, S., Delmer, C. & Wills, M. A. Freshwater transitions and symbioses shaped the evolution and extant diversity of caridean shrimps. *Commun. Biol.* **1**, 16 (2018).
31. Crouch, N. M. A. & Clarke, J. A. Body size evolution in palaeognath birds is consistent with Neogene cooling-linked gigantism. *Palaeogeogr. Palaeoclimatol. Palaeoecol.* **532**, 109224 (2019).
32. Clavel, J. & Morlon, H. Accelerated body size evolution during cold climatic periods in the Cenozoic. *Proc. Natl Acad. Sci. USA* **114**, 4183–4188 (2017).
33. Quintero, I. & Jetz, W. Global elevational diversity and diversification of birds. *Nature* **555**, 246–250 (2018).
34. Markwick, P. J. Crocodylian diversity in space and time: the role of climate in paleoecology and its implication for understanding K/T extinctions. *Paleobiology* **24**, 470–497 (1998).
35. Vasse, D. & Hua, S. Diversité des crocodiliens du Crétacé Supérieur et du Paléogène. Influences et limites de la crise Maastrichtien-Paléocène et des 'Terminal Eocene Events'. *Oryctos* **1**, 65–77 (1998).
36. de Souza Carvalho, I., de Gasparini, Z. B., Salgado, L., de Vasconcellos, F. M. & da Silva Marinho, T. Climate's role in the distribution of the Cretaceous terrestrial Crocodyliformes throughout Gondwana. *Palaeogeogr. Palaeoclimatol. Palaeoecol.* **297**, 252–262 (2010).
37. Claramunt, S. & Cracraft, J. A new time tree reveals Earth history's imprint on the evolution of modern birds. *Sci. Adv.* **1**, e1501005 (2015).
38. Martin, J. E., Amiot, R., Lécuyer, C. & Benton, M. J. Sea surface temperature contributes to marine crocodylomorph evolution. *Nat. Commun.* **5**, 4658 (2014).
39. Tennant, J., Mannion, P. D. & Upchurch, P. Environmental drivers of crocodyliform extinction across the Jurassic/Cretaceous transition. *Proc. R. Soc. B.* **283**, 20152840 (2016).
40. De Celis, A., Narváez, I. & Ortega, F. Spatiotemporal palaeodiversity patterns of modern crocodiles (Crocodyliformes: Eusuchia). *Zool. J. Linn. Soc.* **189**, 635–656 (2020).
41. Feduccia, A. 'Big bang' for tertiary birds? *Trends Ecol. Evol.* **18**, 172–176 (2003).
42. Prum, R. O. et al. A comprehensive phylogeny of birds (Aves) using targeted next-generation DNA sequencing. *Nature* **526**, 569–573 (2015).
43. Jetz, W., Thomas, G. H., Joy, J. B., Hartmann, K. & Mooers, A. O. The global diversity of birds in space and time. *Nature* **491**, 444–448 (2012).
44. Mudelsee, M., Bickert, T., Lear, C. H. & Lohmann, G. Cenozoic climate changes: a review based on time series analysis of marine benthic  $\delta^{18}\text{O}$  records. *Rev. Geophys.* **52**, 333–374 (2014).
45. Solórzano, A., Núñez-Flores, M., Inostroza-Michael, O. & Hernández, C. E. Biotic and abiotic factors driving the diversification dynamics of Crocodylia. *Palaeontology* **63**, 415–429 (2020).
46. Groh, S. S., Upchurch, P., Barrett, P. M. & Day, J. J. How to date a crocodile: estimation of neosuchian clade ages and a comparison of four time-scaling methods. *Palaeontology* **65**, e12589 (2022).
47. Darlim, G., Lee, M. S. Y., Walter, J. & Rabi, M. The impact of molecular data on the phylogenetic position of the putative oldest crown crocodylian and the age of the clade. *Biol. Lett.* **18**, 20210603 (2022).
48. Rio, J. P. & Mannion, P. D. Phylogenetic analysis of a new morphological dataset elucidates the evolutionary history of Crocodylia and resolves the long-standing gharial problem. *PeerJ* **9**, e12094 (2021).

49. Lee, M. S. Y. & Yates, A. M. Tip-dating and homoplasy: reconciling the shallow molecular divergences of modern gharials with their long fossil record. *Proc. Biol. Sci.* **285**, 20181071 (2018).
50. Toljagić, O. & Butler, R. J. Triassic–Jurassic mass extinction as trigger for the Mesozoic radiation of crocodylomorphs. *Biol. Lett.* **9**, 20130095 (2013).
51. Pol, D. & Leardi, J. M. Diversity patterns of Notosuchia (Crocodyliformes, Mesoeucrocodylia) during the Cretaceous of Gondwana. *Publ. Electron. Asoc. Paleontol. Argent.* **15**, 172–186 (2015).
52. Kellner, A. W. A., Pinheiro, A. E. P. & Campos, D. A. A new Sebecid from the Paleogene of Brazil and the crocodyliform radiation after the K–Pg boundary. *PLoS ONE* **9**, e81386 (2014).
53. Paolillo, A. & Linares, O. J. Nuevos cocodrilos sebecosuchia del cenozoico suramericano (Mesosuchia: Crocodylia). *Paleobiologia Neotropical* **3**, 1–25 (2007).
54. Salisbury, S. W. & Willis, P. M. A. A new crocodylian from the Early Eocene of south-eastern Queensland and a preliminary investigation of the phylogenetic relationships of crocodyloids. *Alcheringa* **20**, 179–226 (1996).
55. Mead, J. I. et al. New extinct Mekosuchine crocodile from Vanuatu, South Pacific. *Copeia* **2002**, 632–641 (2002).
56. Scheyer, T. M. et al. Crocodylian diversity peak and extinction in the late Cenozoic of the northern Neotropics. *Nat. Commun.* **4**, 1907 (2013).
57. Salas-Gismondi, R. et al. A Miocene hyperdiverse crocodylian community reveals peculiar trophic dynamics in proto-Amazonian mega-wetlands. *Proc. Biol. Sci.* **282**, 20142490 (2015).
58. Young, M. T., Bell, M. A., de Andrade, M. B. & Brusatte, S. L. Body size estimation and evolution in metriorhynchid crocodylomorphs: implications for species diversification and niche partitioning. *Zool. J. Linn. Soc.* **163**, 1199–1216 (2011).
59. Johnson, M. M., Young, M. T. & Brusatte, S. L. The phylogenetics of Teleosauroidea (Crocodylomorpha, Thalattosuchia) and implications for their ecology and evolution. *PeerJ* **8**, e9808 (2020).
60. Brochu, C. A. A new Late Cretaceous gavialoid crocodylian from eastern North America and the phylogenetic relationships of thoracosauers. *J. Vert. Paleontol.* **24**, 610–633 (2004).
61. Jouve, S. et al. The oldest African crocodylian: phylogeny, paleobiogeography, and differential survivorship of marine reptiles through the Cretaceous–Tertiary boundary. *J. Vert. Paleontol.* **28**, 409–421 (2008).
62. Vermeij, G. J. *Biogeography and Adaptation: Patterns of Marine Life* (Harvard Univ. Press, 1978).
63. Vrba, E. S. Evolution, species and fossils: how does life evolve. *S. Afr. J. Sci.* **76**, 61–84 (1980).
64. Kozak, K. H. & Wiens, J. J. Accelerated rates of climatic-niche evolution underlie rapid species diversification. *Ecol. Lett.* **13**, 1378–1389 (2010).
65. Stockdale, M. T. & Benton, M. J. Environmental drivers of body size evolution in crocodile-line archosaurs. *Commun. Biol.* **4**, 38 (2021).
66. Colbert, E. H., Cowles, R. B. & Cowles, R. B. Temperature tolerances in the American alligator and their bearing on the habits, evolution, and extinction of the dinosaurs. *Bull. Am. Mus. Nat. Hist.* **86**, 7 (1946).
67. Markwick, P. J. Fossil crocodylians as indicators of Late Cretaceous and Cenozoic climates: implications for using palaeontological data in reconstructing palaeoclimate. *Palaeogeogr. Palaeoclimatol. Palaeoecol.* **137**, 205–271 (1998).
68. Legendre, L. J., Guénard, G., Botha-Brink, J. & Cubo, J. Palaeohistological evidence for ancestral high metabolic rate in archosaurs. *Syst. Biol.* **65**, 989–996 (2016).
69. Cubo, J. et al. Were Notosuchia (Pseudosuchia: Crocodylomorpha) warm-blooded? A palaeohistological analysis suggests ectothermy. *Biol. J. Linn. Soc. Lond.* **131**, 154–162 (2020).
70. Estes, R. & Howard Hutchison, J. Eocene lower vertebrates from Ellesmere Island, Canadian Arctic Archipelago. *Palaeogeogr. Palaeoclimatol. Palaeoecol.* **30**, 325–347 (1980).
71. Pinceel, T. et al. Environmental change as a driver of diversification in temporary aquatic habitats: does the genetic structure of extant fairy shrimp populations reflect historic aridification? *Freshw. Biol.* **58**, 1556–1572 (2013).
72. Dorn, A., Musilová, Z., Platzer, M., Reichwald, K. & Cellerino, A. The strange case of East African annual fishes: aridification correlates with diversification for a savannah aquatic group? *BMC Evol. Biol.* **14**, 210 (2014).
73. Tennant, J. P., Mannion, P. D. & Upchurch, P. Sea level regulated tetrapod diversity dynamics through the Jurassic/Cretaceous interval. *Nat. Commun.* **7**, 12737 (2016).
74. van Hengstum, P. J., Cresswell, J. N., Milne, G. A. & Illiffe, T. M. Development of anchialine cave habitats and karst subterranean estuaries since the last ice age. *Sci. Rep.* **9**, 11907 (2019).
75. Klausen, T. G., Paterson, N. W. & Benton, M. J. Geological control on dinosaurs’ rise to dominance: Late Triassic ecosystem stress by relative sea level change. *Terra Nova* **32**, 434–441 (2020).
76. Benson, R. B. J. & Butler, R. J. Uncovering the diversification history of marine tetrapods: ecology influences the effect of geological sampling biases. *Geol. Soc. Spec. Publ.* **358**, 191–208 (2011).
77. Jones, L. A. & Eichenseer, K. Uneven spatial sampling distorts reconstructions of Phanerozoic seawater temperature. *Geology* **50**, 238–242 (2022).
78. Wellborn, G. A. & Langerhans, R. B. Ecological opportunity and the adaptive diversification of lineages. *Ecol. Evol.* **5**, 176–195 (2015).
79. Losos, J. B. Adaptive radiation, ecological opportunity, and evolutionary determinism. American Society of Naturalists E. O. Wilson award address. *Am. Nat.* **175**, 623–639 (2010).
80. Aristide, L. & Morlon, H. Understanding the effect of competition during evolutionary radiations: an integrated model of phenotypic and species diversification. *Ecol. Lett.* **22**, 2006–2017 (2019).
81. Gamisch, A. & Comes, H. P. Clade-age-dependent diversification under high species turnover shapes species richness disparities among tropical rainforest lineages of Bulbophyllum (Orchidaceae). *BMC Evol. Biol.* **19**, 93 (2019).
82. Greenberg, D. A. & Mooers, A. Ø. Linking speciation to extinction: diversification raises contemporary extinction risk in amphibians. *Ecol. Lett.* **1**, 40–48 (2017).
83. Jouve, S., Bouya, B. & Amaghaz, M. A long-snouted dyrosaurid (crocodyliformes, mesoeucrocodylia) from the Paleocene of Morocco: phylogenetic and palaeobiogeographic implications. *Palaeontology* **51**, 281–294 (2008).
84. Spiridonov, A. & Lovejoy, S. Life rather than climate influences diversity at scales greater than 40 million years. *Nature* **607**, 307–312 (2022).
85. Lewitus, E., Bittner, L., Malviya, S., Bowler, C. & Morlon, H. Clade-specific diversification dynamics of marine diatoms since the Jurassic. *Nat. Ecol. Evol.* **2**, 1715–1723 (2018).
86. Valente, L. M., Savolainen, V. & Vargas, P. Unparalleled rates of species diversification in Europe. *Proc. Biol. Sci.* **277**, 1489–1496 (2010).
87. Davis, K. E., Hill, J., Astrop, T. I. & Wills, M. A. Global cooling as a driver of diversification in a major marine clade. *Nat. Commun.* **7**, 13003 (2016).
88. Tang, C., Davis, K. E., Delmer, C., Yang, D. & Wills, M. A. Elevated atmospheric CO<sub>2</sub> promoted speciation in mosquitoes (Diptera, Culicidae). *Commun. Biol.* **1**, 182 (2018).
89. Thomson, R. C., Spinks, P. Q. & Shaffer, H. B. A global phylogeny of turtles reveals a burst of climate-associated diversification on continental margins. *Proc. Natl Acad. Sci. USA* **118**, e2012215118 (2021).

90. Rose, J. P. et al. Phylogeny, historical biogeography, and diversification of angiosperm order Ericales suggest ancient Neotropical and East Asian connections. *Mol. Phylogenet. Evol.* **122**, 59–79 (2018).
91. Davis, K. E. et al. Ecological transitions and the shape of the decapod tree of life. *Integr. Comp. Biol.* **62**, 332–344 (2022).
92. Thompson, J. B., Davis, K. E., Dodd, H. O., Wills, M. A. & Priest, N. K. Speciation across the Earth driven by global cooling in terrestrial orchids. *Proc. Natl Acad. Sci. USA* **120**, e2102408120 (2022).
93. Lloyd, G. T., Bapst, D. W., Friedman, M. & Davis, K. E. Probabilistic divergence time estimation without branch lengths: dating the origins of dinosaurs, avian flight and crown birds. *Biol. Lett.* **12**, 20160609 (2016).
94. Wright, A. M., Lloyd, G. T. & Hillis, D. M. Modeling character change heterogeneity in phylogenetic analyses of morphology through the use of priors. *Syst. Biol.* **65**, 602–611 (2016).
95. Peters, S. E. & McClennen, M. The Paleobiology Database application programming interface. *Paleobiology* **42**, 1–7 (2016).
96. Baum, B. R. & Ragan, M. A. The MRP method. In *Phylogenetic Supertrees: Combining Information to Reveal the Tree of Life* (ed. Bininda-Emonds, O. R. P.) 17–34 (Springer, 2004).
97. Oaks, J. R. A time-calibrated species tree of Crocodylia reveals a recent radiation of the true crocodiles. *Evolution* **65**, 3285–3297 (2011).
98. Goloboff, P. A. & Catalano, S. A. TNT version 1.5, including a full implementation of phylogenetic morphometrics. *Cladistics* **32**, 221–238 (2016).
99. Swofford, D. L. PAUP\*: Phylogenetic Analysis Using Parsimony (and Other Methods) 4.0 b8 (Sinauer, 2001).
100. Walker, J. D., Geissman, J. W., Bowring, S. A. & Babcock, L. E. *Geologic Time Scale v. 5.0* (Geological Society of America, 2018).
101. Bouckaert, R. et al. BEAST 2.5: an advanced software platform for Bayesian evolutionary analysis. *PLoS Comput. Biol.* **15**, e1006650 (2019).
102. Irmis, R. B., Nesbitt, S. J. & Sues, H.-D. Early Crocodylomorpha. *Geol. Soc. Spec. Publ.* **379**, 275–302 (2013).
103. Turner, A. H., Pritchard, A. C. & Matzke, N. J. Empirical and Bayesian approaches to fossil-only divergence times: a study across three reptile clades. *PLoS ONE* **12**, e0169885 (2017).
104. Mitchell, J. S., Etienne, R. S. & Rabosky, D. L. Inferring diversification rate variation from phylogenies with fossils. *Syst. Biol.* **68**, 1–18 (2019).
105. Rabosky, D. L. Automatic detection of key innovations, rate shifts, and diversity-dependence on phylogenetic trees. *PLoS ONE* **9**, e89543 (2014).
106. Rabosky, D. L. et al. BAMMtools: an R package for the analysis of evolutionary dynamics on phylogenetic trees. *Methods Ecol. Evol.* **5**, 701–707 (2014).
107. Veizer, J. et al.  $^{87}\text{Sr}/^{86}\text{Sr}$ ,  $\delta^{13}\text{C}$  and  $\delta^{18}\text{O}$  evolution of Phanerozoic seawater. *Chem. Geol.* **161**, 59–88 (1999).
108. Zachos, J., Pagani, M., Sloan, L., Thomas, E. & Billups, K. Trends, rhythms, and aberrations in global climate 65 Ma to present. *Science* **292**, 686–693 (2001).
109. Haq, B. U., Hardenbol, J. & Vail, P. R. Chronology of fluctuating sea levels since the Triassic. *Science* **235**, 1156–1167 (1987).
110. Miller, K. G. et al. The Phanerozoic record of global sea-level change. *Science* **310**, 1293–1298 (2005).
111. Prokoph, A., Shields, G. A. & Veizer, J. Compilation and time-series analysis of a marine carbonate  $\delta^{18}\text{O}$ ,  $\delta^{13}\text{C}$ ,  $^{87}\text{Sr}/^{86}\text{Sr}$  and  $\delta^{34}\text{S}$  database through Earth history. *Earth Sci. Rev.* **87**, 113–133 (2008).
112. Kristoufek, L. Measuring correlations between non-stationary series with DCCA coefficient. *Physica A* **402**, 291–298 (2014).
113. Paradis, E. & Schliep, K. ape 5.0: an environment for modern phylogenetics and evolutionary analyses in R. *Bioinformatics* **35**, 526–528 (2019).
114. R Core Team R: a language and environment for statistical computing (R Foundation for Statistical Computing, 2015).
115. Koehn, C. R., Petrie, M. D., Bradford, J. B., Litvak, M. E. & Strachan, S. Seasonal precipitation and soil moisture relationships across forests and woodlands in the southwestern United States. *J. Geophys. Res. Biogeosci.* **126**, e2020JG005986 (2021).
116. Dunhill, A. M., Hannisdal, B. & Benton, M. J. Disentangling rock record bias and common-cause from redundancy in the British fossil record. *Nat. Commun.* **5**, 4818 (2014).
117. Liow, L. H., Reitan, T. & Harnik, P. G. Ecological interactions on macroevolutionary time scales: clams and brachiopods are more than ships that pass in the night. *Ecol. Lett.* **18**, 1030–1039 (2015).
118. Schreiber, T. Measuring information transfer. *Phys. Rev. Lett.* **85**, 461–464 (2000).
119. Steeg, G. V., Ver Steeg, G. & Galstyan, A. Information transfer in social media. In *Proceedings of the 21st International conference on World Wide Web*, 509–518 (2012).
120. Lungarella, M., Pitti, A. & Kuniyoshi, Y. Information transfer at multiple scales. *Phys. Rev. E* **76**, 056117 (2007).
121. Behrendt, S., Dimpfl, T., Peter, F. J. & Zimmermann, D. J. RTransferEntropy—quantifying information flow between different time series using effective transfer entropy. *SoftwareX* **10**, 100265 (2019).
122. Visser, I. & Speekenbrink, M. depmixS4: an R package for hidden Markov models. *J. Stat. Softw.* **36**, 1–21 (2010). Others.
123. Title, P. O. & Rabosky, D. L. Do macrophylogenies yield stable macroevolutionary inferences? An example from squamate reptiles. *Syst. Biol.* **66**, 843–856 (2017).
124. Wilberg, E. W. What's in an outgroup? The impact of outgroup choice on the phylogenetic position of Thalattosuchia (Crocodylomorpha) and the origin of Crocodyliformes. *Syst. Biol.* **64**, 621–637 (2015).
125. Jones, A. S. & Butler, R. J. A new phylogenetic analysis of Phytosauria (Archosauria: Pseudosuchia) with the application of continuous and geometric morphometric character coding. *PeerJ* **6**, e5901 (2018).
126. Letunic, I. & Bork, P. Interactive Tree Of Life (iTOL) v5: an online tool for phylogenetic tree display and annotation. *Nucleic Acids Res.* **49**, W293–W296 (2021).
127. Bell, M. A. & Lloyd, G. T. strap: an R package for plotting phylogenies against stratigraphy and assessing their stratigraphic congruence. *Palaeontology* **58**, 379–389 (2015).

## Acknowledgements

We thank the Palaeontological Association for an Undergraduate Research Bursary awarded to K.E.D. (Principal Investigator) and A.R.D.P. (grant number PA-UB201903). P.D.M.'s contribution was supported by grants from The Royal Society (UF160216, RGF\R1\180020, RGF\EA\201037, URF\_R\_221010) and The Leverhulme Trust (RPG-2021-202). Finally, we thank M. Sadde for finding an error in our initial phylogeny plotting code. This is Paleobiology Database official publication number 460.

## Author contributions

A.R.D.P. and K.E.D. were awarded funding to support the research and carried out the analyses. G.T.L. collected the phylogenetic data and built the data matrix. A.R.D.P. and K.E.D. built the phylogeny. A.R.D.P., K.E.D. and P.D.M. collated the ecological and stratigraphic data. A.R.D.P. and K.E.D. prepared the figures. K.E.D. conceptualized the project, wrote the R code and led the writing of the manuscript. P.D.M. contributed to the writing, and all authors contributed to finalizing the text. All authors contributed to discussion and interpretation of results.

## Competing interests

The authors declare no competing interests.

## Additional information

**Extended data** is available for this paper at <https://doi.org/10.1038/s41559-023-02244-0>.

**Supplementary information** The online version contains supplementary material available at <https://doi.org/10.1038/s41559-023-02244-0>.

**Correspondence and requests for materials** should be addressed to Katie E. Davis.

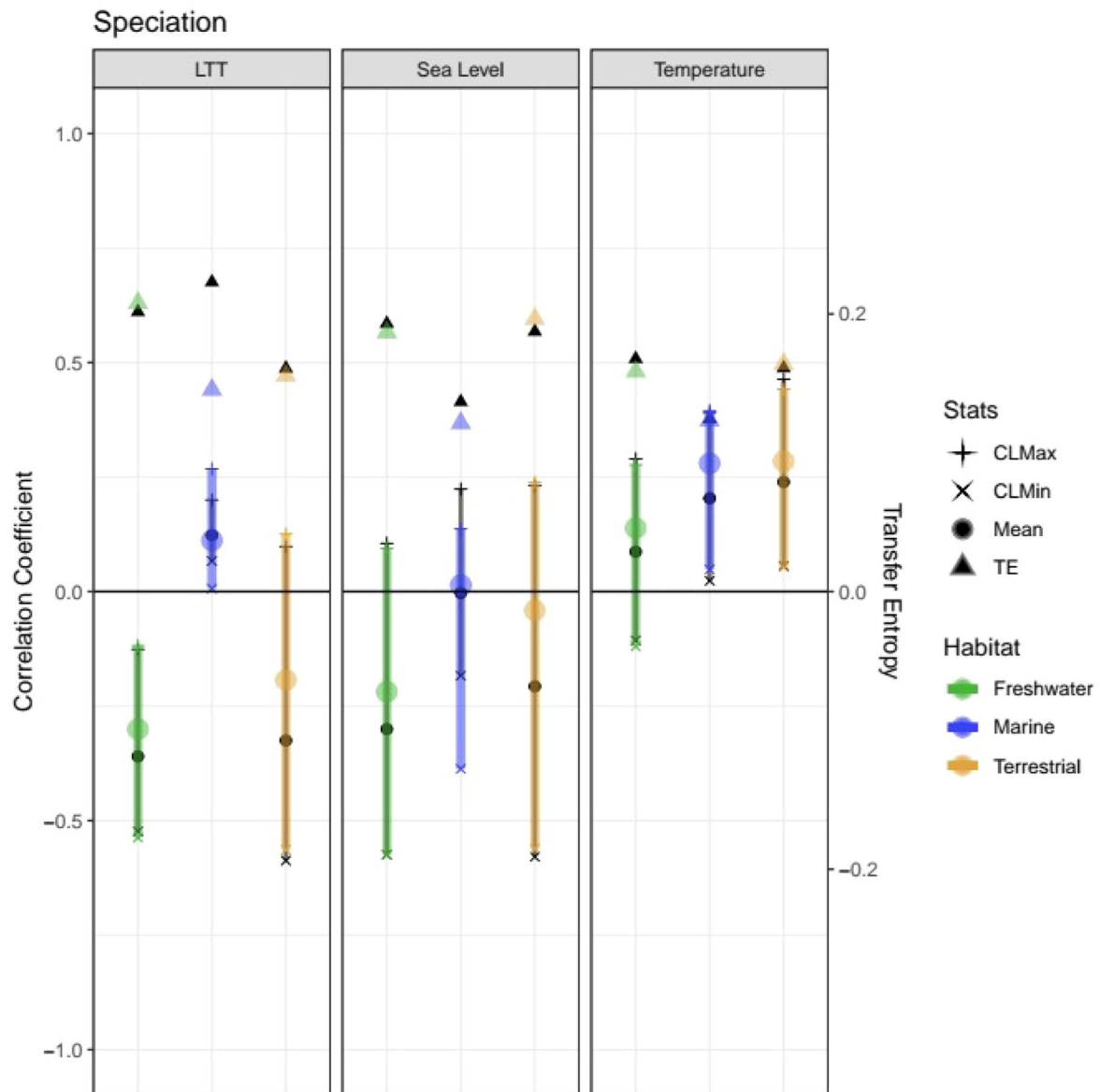
**Peer review information** *Nature Ecology & Evolution* thanks Pedro Godoy, Andres Solorzano and the other, anonymous, reviewer(s) for their contribution to the peer review of this work.

**Reprints and permissions information** is available at [www.nature.com/reprints](http://www.nature.com/reprints).

**Publisher's note** Springer Nature remains neutral with regard to jurisdictional claims in published maps and institutional affiliations.

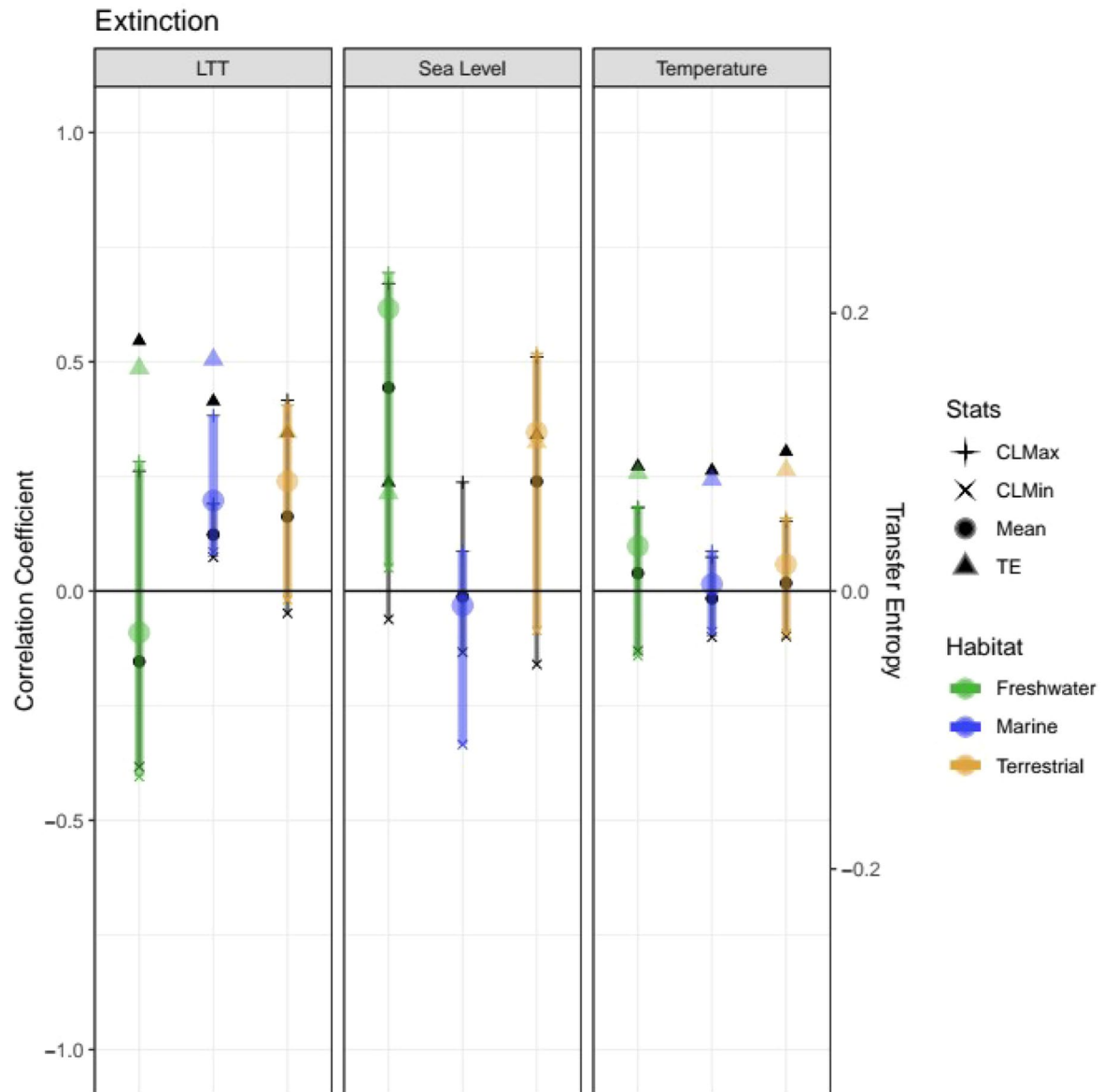
**Open Access** This article is licensed under a Creative Commons Attribution 4.0 International License, which permits use, sharing, adaptation, distribution and reproduction in any medium or format, as long as you give appropriate credit to the original author(s) and the source, provide a link to the Creative Commons license, and indicate if changes were made. The images or other third party material in this article are included in the article's Creative Commons license, unless indicated otherwise in a credit line to the material. If material is not included in the article's Creative Commons license and your intended use is not permitted by statutory regulation or exceeds the permitted use, you will need to obtain permission directly from the copyright holder. To view a copy of this license, visit <http://creativecommons.org/licenses/by/4.0/>.

© The Author(s) 2023



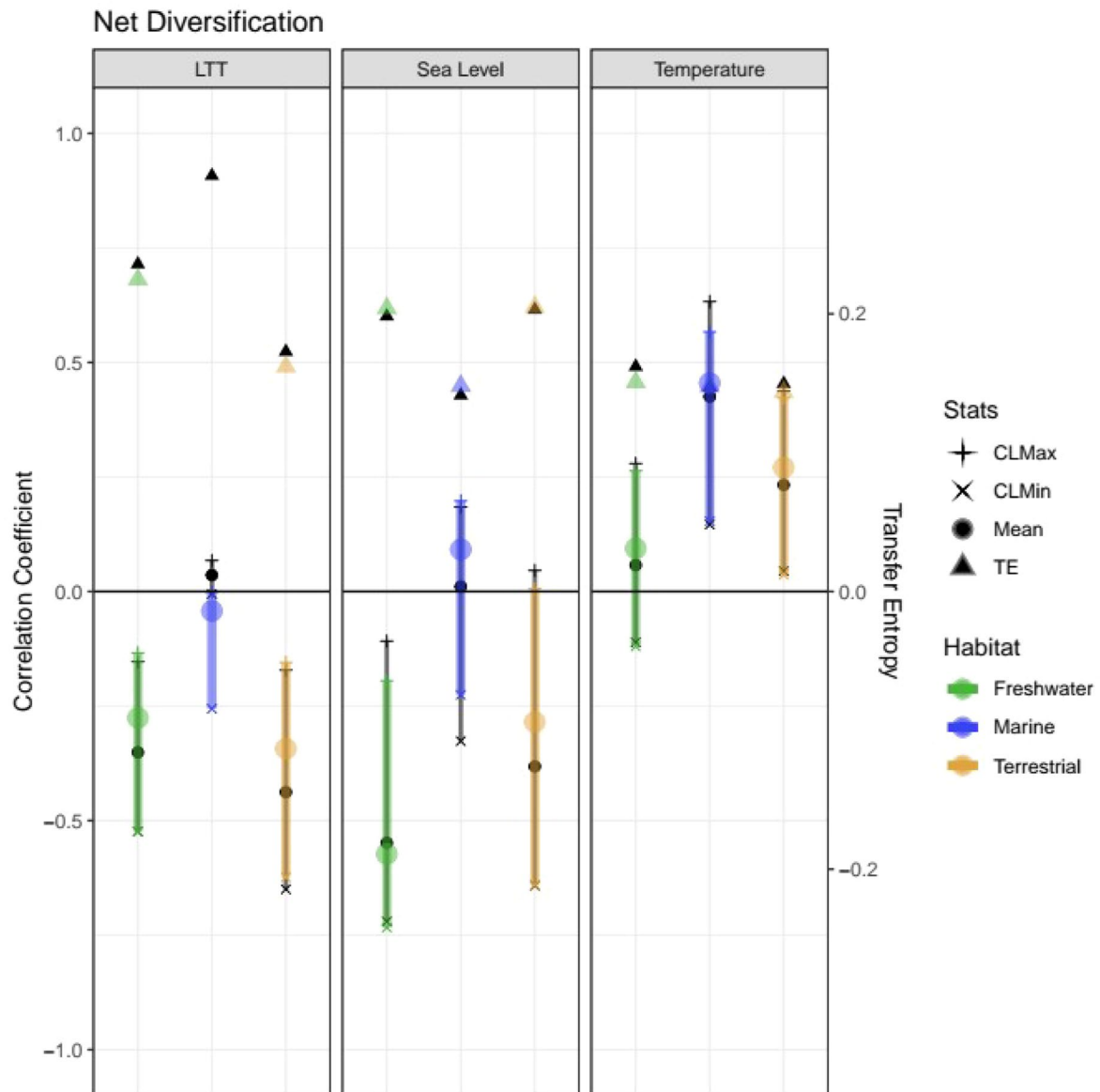
**Extended Data Fig. 1 | Time series correlations and transfer entropy results for speciation analyses with *Thalattosuchia* as sister to *Neosuchia*.** Results for all correlations showing the mean, 2.5% and 97.5% confidence intervals, and Transfer Entropy (TE) results for each habitat partition for each time series (marine = blue, terrestrial = green, freshwater = orange). N = 9,001 independent

samples as derived from the diversification rate analyses. All correlations are significant at  $p < 2.2 \times 10^{-16}$  as assessed with a Wilcoxon signed-rank test, while all transfer entropy values are significant at  $p < 0.001$  as assessed by a Markov block boot-strap<sup>121</sup>.



**Extended Data Fig. 2 | Time series correlations and transfer entropy results for extinction analyses with *Thalattosuchia* as sister to *Neosuchia*.** Results for all correlations showing the mean, 2.5% and 97.5% confidence intervals, and Transfer Entropy (TE) results for each habitat partition for each time series (marine = blue, terrestrial = green, freshwater = orange). N = 9,001 independent

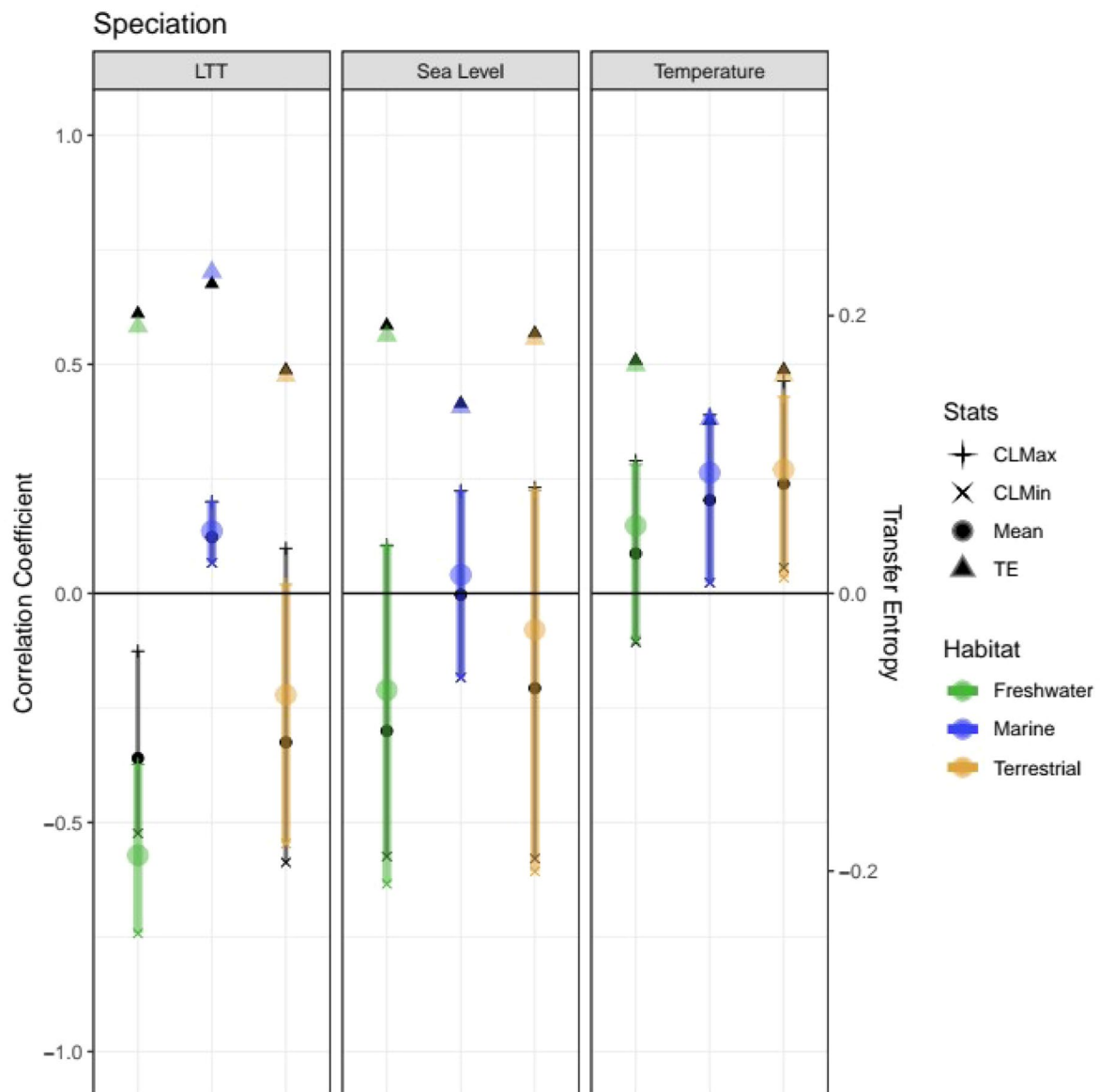
samples as derived from the diversification rate analyses. Coloured symbols represent results from sensitivity analyses, black symbols represent results from the Maximum Clade Credibility tree. All correlations are significant at  $p < 2.2e-16$  as assessed with a Wilcoxon signed-rank test, while all transfer entropy values are significant at  $p < 0.001$  as assessed by a Markov block boot-strap<sup>121</sup>.



**Extended Data Fig. 3 | Time series correlations and transfer entropy results for net diversification analyses with *Thalattosuchia* as sister to *Neosuchia*.** Results for all correlations showing the mean, 2.5% and 97.5% confidence intervals, and Transfer Entropy (TE) results for each habitat partition for each time series (marine = blue, terrestrial = green, freshwater = orange). N = 9,001 independent samples as derived from the diversification rate analyses. Coloured

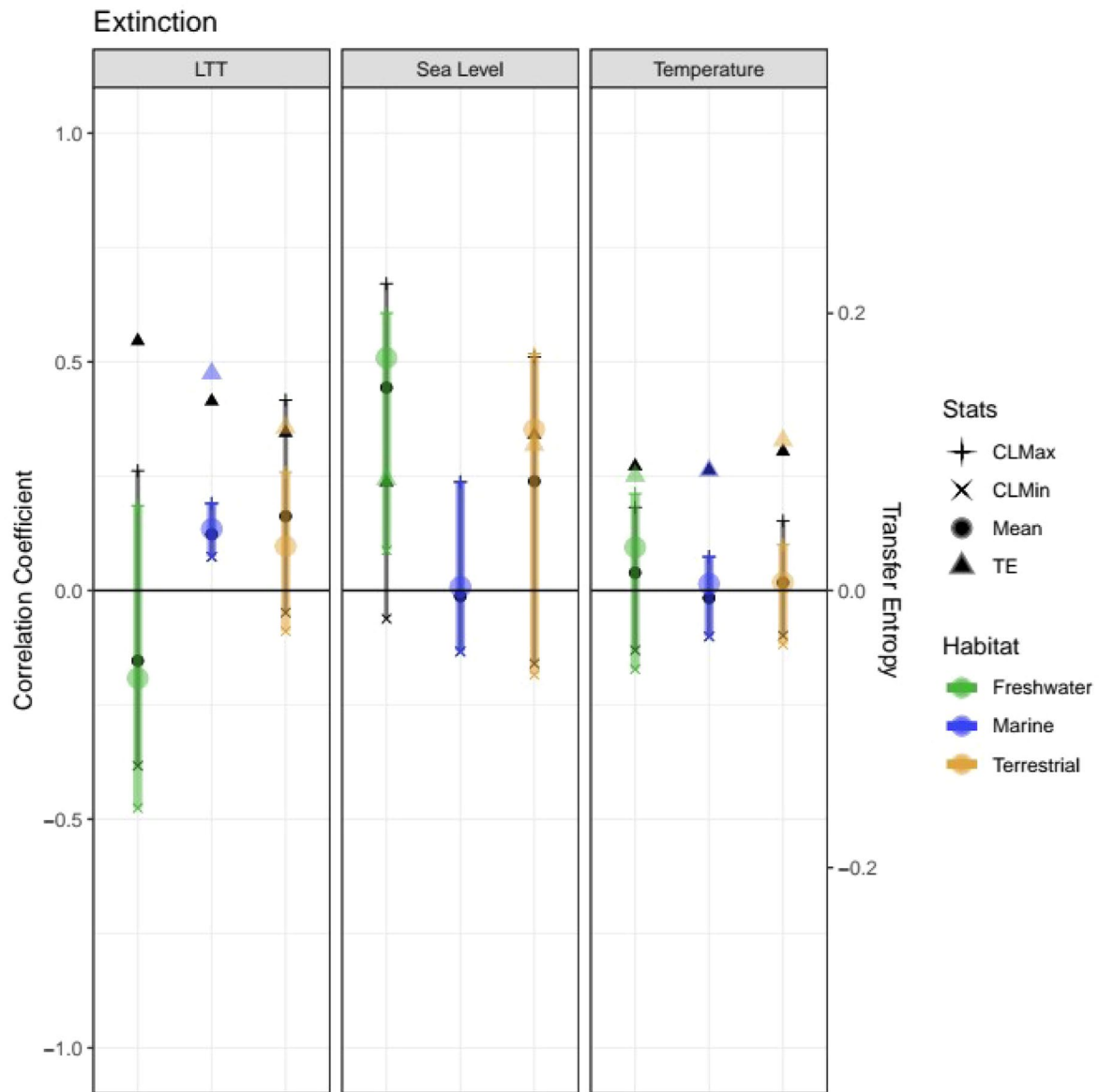
symbols represent results from sensitivity analyses, black symbols represent results from the Maximum Clade Credibility tree. All correlations are significant at  $p < 2.2e-16$  as assessed with a Wilcoxon signed-rank test, while all transfer entropy values are significant at  $p < 0.001$  as assessed by a Markov block boot-strap<sup>121</sup>.





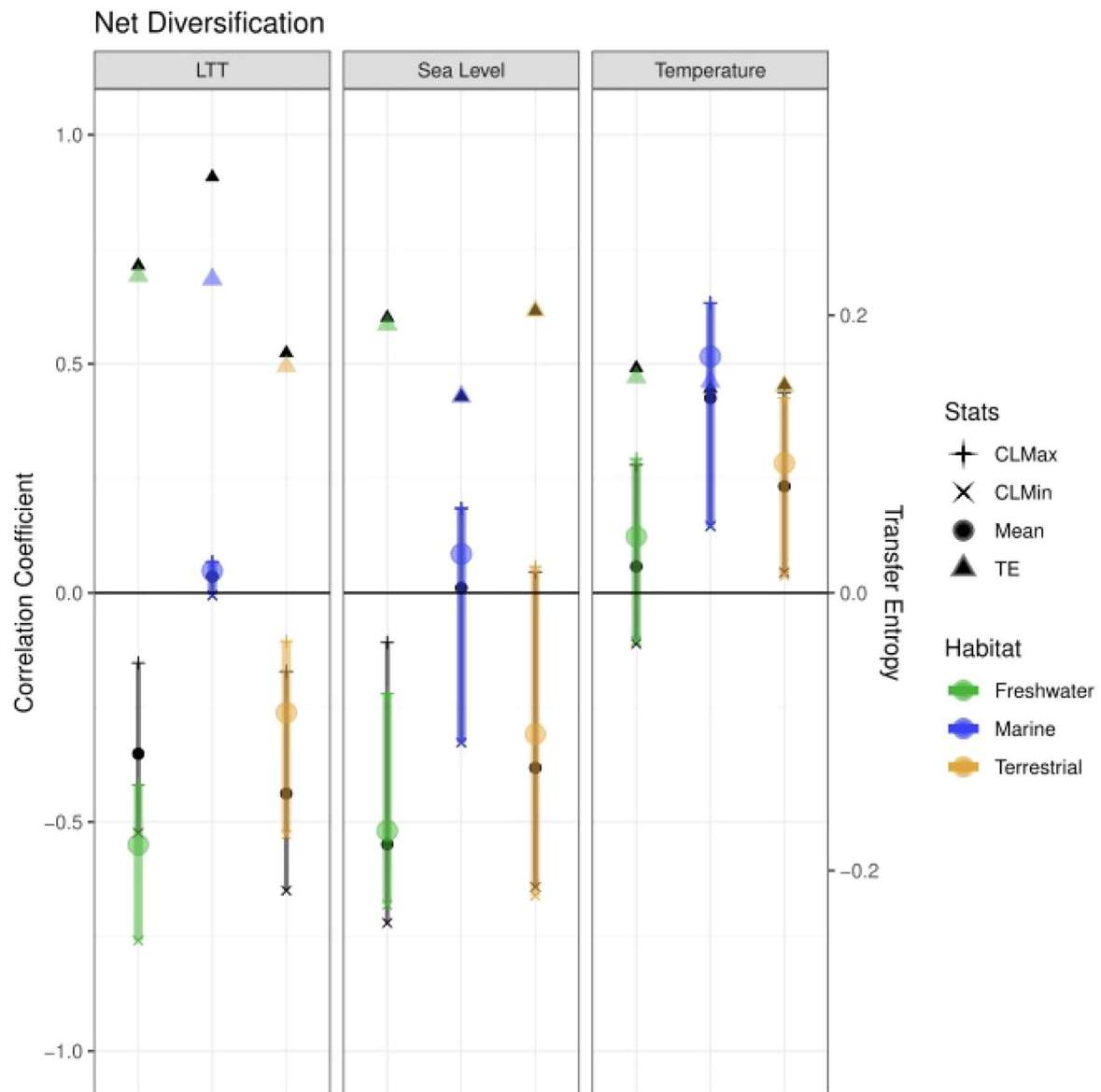
**Extended Data Fig. 4 | Time series correlations and transfer entropy results for speciation analyses with *Phytosauria* excluded.** Results for all correlations showing the mean, 2.5% and 97.5% confidence intervals, and Transfer Entropy (TE) results for each habitat partition for each time series (marine = blue, terrestrial = green, freshwater = orange).  $N = 9,001$  independent samples as

derived from the diversification rate analyses. Coloured symbols represent results from sensitivity analyses, black symbols represent results from the Maximum Clade Credibility tree. All correlations are significant at  $p < 2.2e-16$  as assessed with a Wilcoxon signed-rank test, while all transfer entropy values are significant at  $p < 0.001$  as assessed by a Markov block boot-strap<sup>121</sup>.



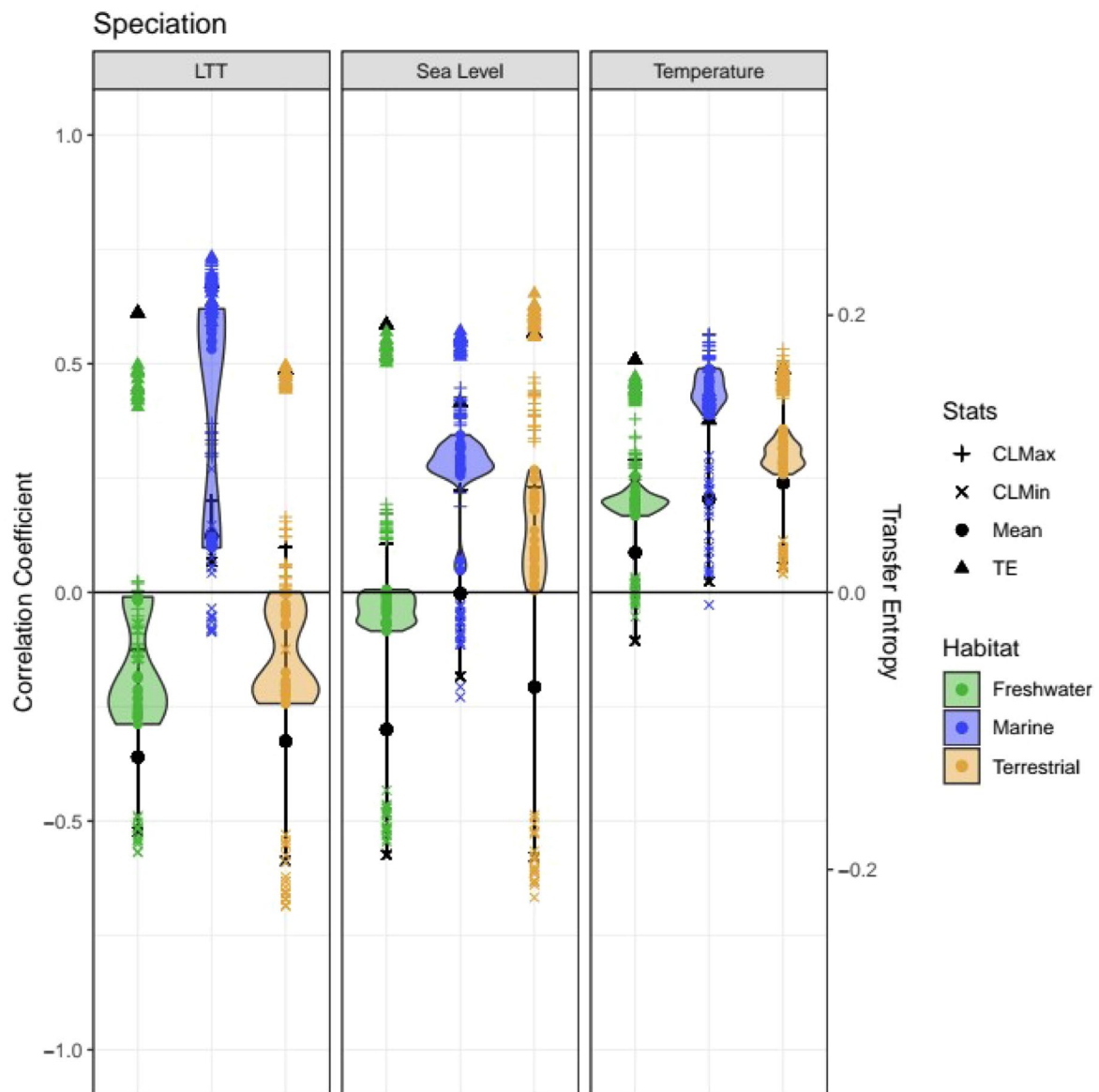
**Extended Data Fig. 5 | Time series correlations and transfer entropy results for extinction analyses with Phytosauria excluded.** Results for all correlations showing the mean, 2.5% and 97.5% confidence intervals, and Transfer Entropy (TE) results for each habitat partition for each time series (marine = blue, terrestrial = green, freshwater = orange).  $N = 9,001$  independent samples as

derived from the diversification rate analyses. Coloured symbols represent results from sensitivity analyses, black symbols represent results from the Maximum Clade Credibility tree. All correlations are significant at  $p < 2.2 \times 10^{-16}$  as assessed with a Wilcoxon signed-rank test, while all transfer entropy values are significant at  $p < 0.001$  as assessed by a Markov block boot-strap<sup>121</sup>.



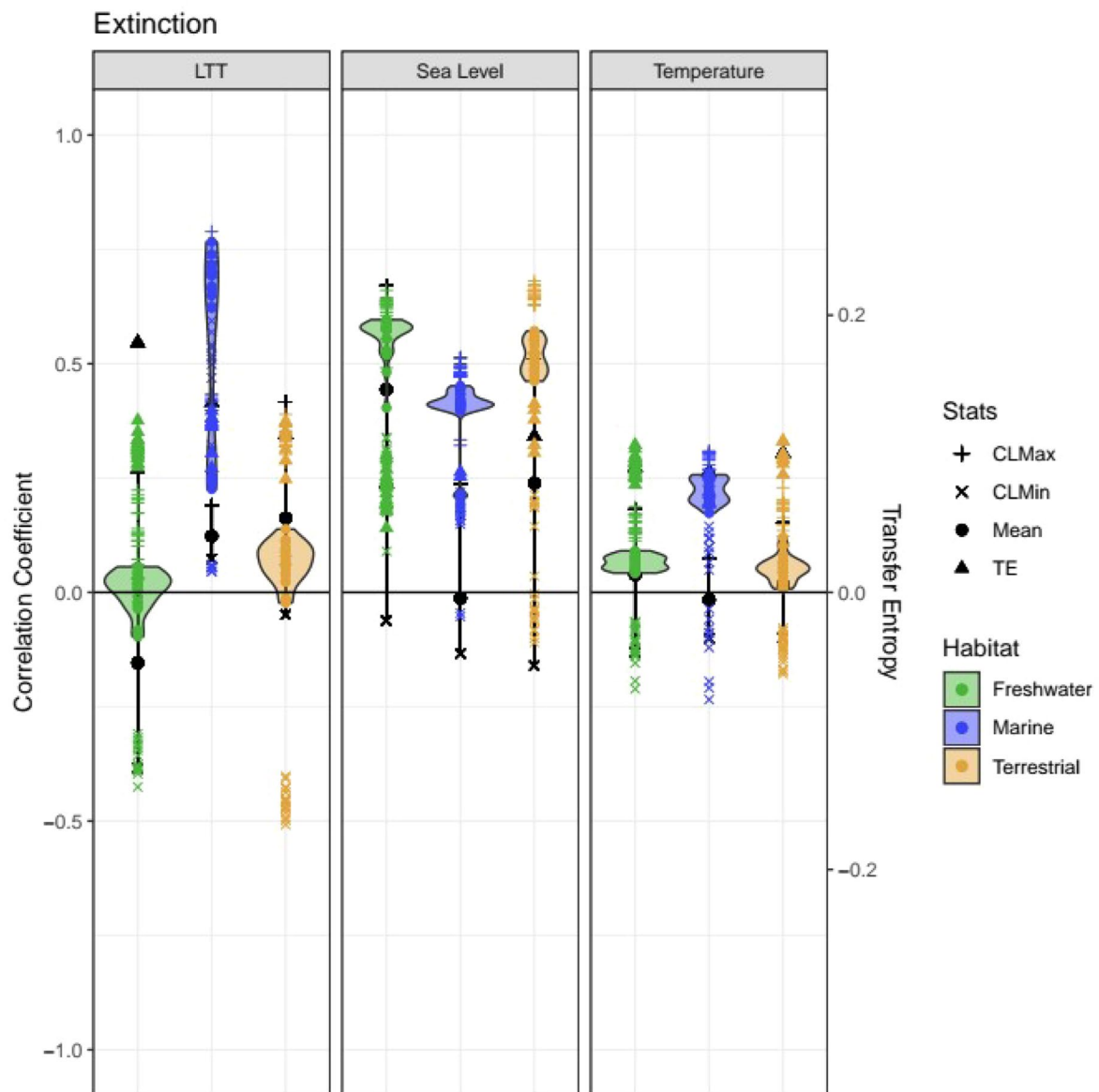
**Extended Data Fig. 6 | Time series correlations and transfer entropy results for net diversification analyses with Phytosauria excluded.** Results for all correlations showing the mean, 2.5% and 97.5% confidence intervals, and Transfer Entropy (TE) results for each habitat partition for each time series (marine = blue, terrestrial = green, freshwater = orange).  $N = 9,001$  independent samples

as derived from the diversification rate analyses. Coloured symbols represent results from sensitivity analyses, black symbols represent results from the Maximum Clade Credibility tree. All correlations are significant at  $p < 2.2e-16$  as assessed with a Wilcoxon signed-rank test, while all transfer entropy values are significant at  $p < 0.001$  as assessed by a Markov block boot-strap<sup>121</sup>.



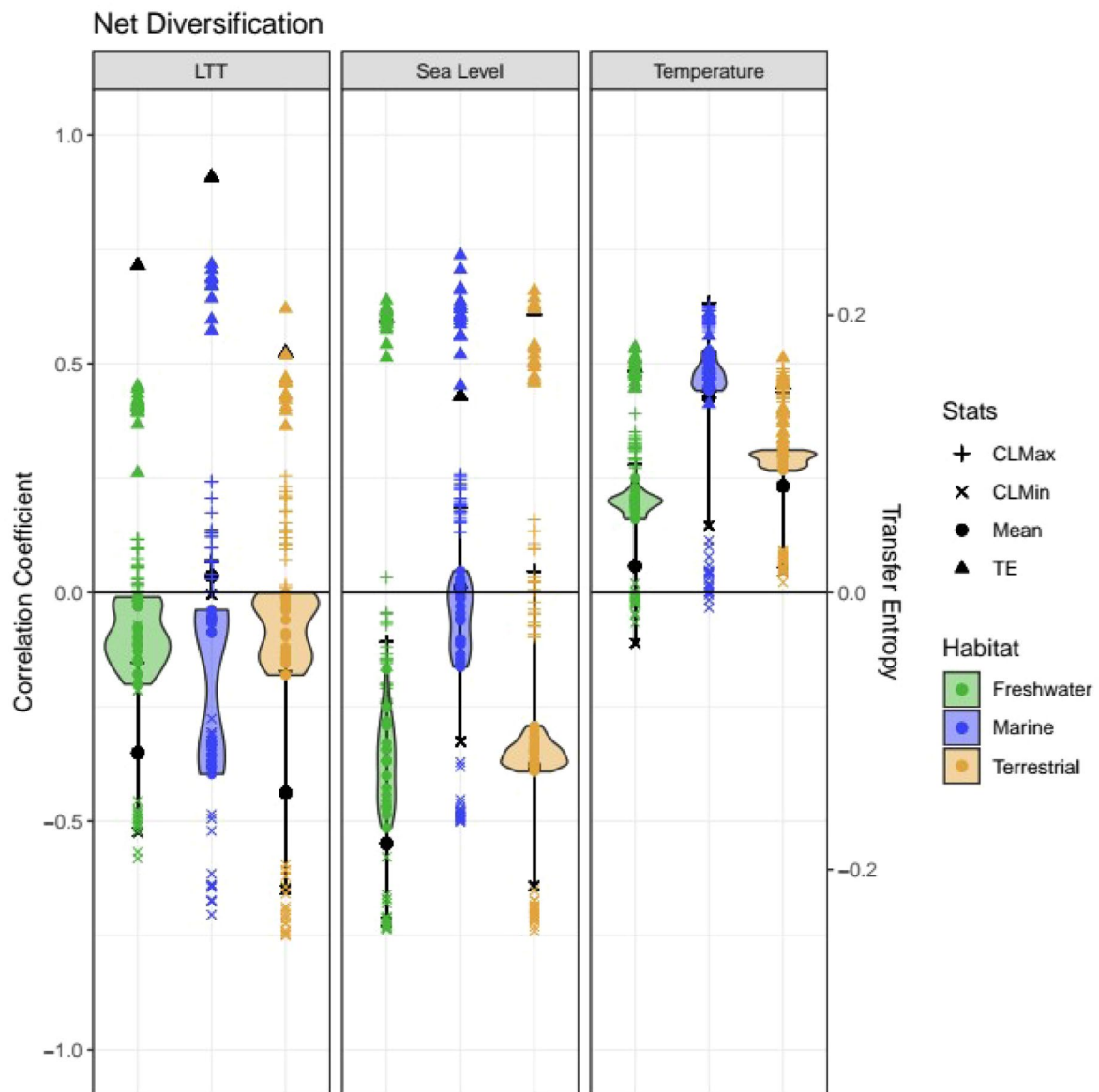
**Extended Data Fig. 7 | Time series correlations and transfer entropy results for speciation analyses assessing the impact of temporal uncertainty.** Results for all correlations showing the mean, 2.5% and 97.5% confidence intervals, and Transfer Entropy (TE) results for each habitat partition for each time series (marine = blue, terrestrial = green, freshwater = orange).  $N = 9,001$  independent samples as derived from the diversification rate analyses. Coloured symbols

represent results from sensitivity analyses, black symbols represent results from the Maximum Clade Credibility tree. Violin plots represent the distribution of results from 20 trees from the posterior distribution. All correlations are significant at  $p < 2.2e-16$  as assessed with a Wilcoxon signed-rank test, while all transfer entropy values are significant at  $p < 0.001$  as assessed by a Markov block boot-strap<sup>121</sup>.



**Extended Data Fig. 8 | Time series correlations and transfer entropy results for extinction analyses assessing the impact of temporal uncertainty.** Results for all correlations showing the mean, 2.5% and 97.5% confidence intervals, and Transfer Entropy (TE) results for each habitat partition for each time series (marine = blue, terrestrial = green, freshwater = orange).  $N = 9,001$  independent samples as derived from the diversification rate analyses. Coloured symbols

represent results from sensitivity analyses, black symbols represent results from the Maximum Clade Credibility tree. Violin plots represent the distribution of results from 20 trees from the posterior distribution. All correlations are significant at  $p < 2.2e-16$  as assessed with a Wilcoxon signed-rank test, while all transfer entropy values are significant at  $p < 0.001$  as assessed by a Markov block boot-strap<sup>121</sup>.



**Extended Data Fig. 9 | Time series correlations and transfer entropy results for net diversification analyses assessing the impact of temporal uncertainty.** Results for all correlations showing the mean, 2.5% and 97.5% confidence intervals, and Transfer Entropy (TE) results for each habitat partition for each time series (marine = blue, terrestrial = green, freshwater = orange).  $N = 9,001$  independent samples as derived from the diversification rate analyses.

Coloured symbols represent results from sensitivity analyses, black symbols represent results from the Maximum Clade Credibility tree. Violin plots represent the distribution of results from 20 trees from the posterior distribution. All correlations are significant at  $p < 2.2e-16$  as assessed with a Wilcoxon signed-rank test, while all transfer entropy values are significant at  $p < 0.001$  as assessed by a Markov block boot-strap<sup>121</sup>.

Corresponding author(s):

Last updated by author(s): YYYY-MM-DD

## Reporting Summary

Nature Portfolio wishes to improve the reproducibility of the work that we publish. This form provides structure for consistency and transparency in reporting. For further information on Nature Portfolio policies, see our [Editorial Policies](#) and the [Editorial Policy Checklist](#).

### Statistics

For all statistical analyses, confirm that the following items are present in the figure legend, table legend, main text, or Methods section.

- | n/a                                 | Confirmed  |
|-------------------------------------|--|
| <input type="checkbox"/>            | <input checked="" type="checkbox"/> The exact sample size ( $n$ ) for each experimental group/condition, given as a discrete number and unit of measurement  |
| <input checked="" type="checkbox"/> | <input type="checkbox"/> A statement on whether measurements were taken from distinct samples or whether the same sample was measured repeatedly   |
| <input type="checkbox"/>            | <input checked="" type="checkbox"/> The statistical test(s) used AND whether they are one- or two-sided<br><i>Only common tests should be described solely by name; describe more complex techniques in the Methods section.</i>   |
| <input checked="" type="checkbox"/> | <input type="checkbox"/> A description of all covariates tested  |
| <input checked="" type="checkbox"/> | <input type="checkbox"/> A description of any assumptions or corrections, such as tests of normality and adjustment for multiple comparisons   |
| <input type="checkbox"/>            | <input checked="" type="checkbox"/> A full description of the statistical parameters including central tendency (e.g. means) or other basic estimates (e.g. regression coefficient) AND variation (e.g. standard deviation) or associated estimates of uncertainty (e.g. confidence intervals) |
| <input type="checkbox"/>            | <input checked="" type="checkbox"/> For null hypothesis testing, the test statistic (e.g. $F$ , $t$ , $r$ ) with confidence intervals, effect sizes, degrees of freedom and $P$ value noted<br><i>Give <math>P</math> values as exact values whenever suitable.</i>                            |
| <input type="checkbox"/>            | <input checked="" type="checkbox"/> For Bayesian analysis, information on the choice of priors and Markov chain Monte Carlo settings   |
| <input checked="" type="checkbox"/> | <input type="checkbox"/> For hierarchical and complex designs, identification of the appropriate level for tests and full reporting of outcomes  |
| <input checked="" type="checkbox"/> | <input type="checkbox"/> Estimates of effect sizes (e.g. Cohen's $d$ , Pearson's $r$ ), indicating how they were calculated  |

*Our web collection on [statistics for biologists](#) contains articles on many of the points above.*

### Software and code

Policy information about [availability of computer code](#)

Data collection Phlyogenetic and ecological data were obtained from the literature, data on fossil age ranges were obtained from the Paleobiology database (paleobiodb.org).

Data analysis TNT 1.5 was used to analyse the phylogenetic data, FossilBAMM was used to obtain the diversification dynamics, BAMMtools 2.1.7 was used to analyse the FossilBAMM output. All analyses were carried out in R 4.1.2.

For manuscripts utilizing custom algorithms or software that are central to the research but not yet described in published literature, software must be made available to editors and reviewers. We strongly encourage code deposition in a community repository (e.g. GitHub). See the Nature Portfolio [guidelines for submitting code & software](#) for further information.

### Data

Policy information about [availability of data](#)

All manuscripts must include a [data availability statement](#). This statement should provide the following information, where applicable:

- Accession codes, unique identifiers, or web links for publicly available datasets
- A description of any restrictions on data availability
- For clinical datasets or third party data, please ensure that the statement adheres to our [policy](#)

All underlying data needed to replicate the results are available in the supplementary files. Data generated by the analyses are available from the corresponding author (KED) on reasonable request.

## Research involving human participants, their data, or biological material

Policy information about studies with [human participants or human data](#). See also policy information about [sex, gender \(identity/presentation\), and sexual orientation](#) and [race, ethnicity and racism](#).

Reporting on sex and gender	NA
Reporting on race, ethnicity, or other socially relevant groupings	NA
Population characteristics	NA
Recruitment	NA
Ethics oversight	NA

Note that full information on the approval of the study protocol must also be provided in the manuscript.

## Field-specific reporting

Please select the one below that is the best fit for your research. If you are not sure, read the appropriate sections before making your selection.

Life sciences       Behavioural & social sciences       Ecological, evolutionary & environmental sciences

For a reference copy of the document with all sections, see [nature.com/documents/nr-reporting-summary-flat.pdf](https://www.nature.com/documents/nr-reporting-summary-flat.pdf)

## Ecological, evolutionary & environmental sciences study design

All studies must disclose on these points even when the disclosure is negative.

Study description	We build a new phylogenetic tree of crocodile-line archosaurs and use it to model diversification dynamics through their evolutionary history. We partition our data set by ecology to explore the effects on ecology on macroevolutionary responses to climate change and biotic interactions. We show that both abiotic (temperature and sea level) and biotic (niche filling/competitor) variables drove diversification in crocodile-line archosaurs over their 250 million year history but that the effects are ecology dependent.
Research sample	Our raw data consist of phylogenetic trees collected from the literature. The underlying data were reanalysed to build our phylogeny, which is fundamental to our analyses.
Sampling strategy	We collected all phylogenetic data containing crocodile-line archosaurs with no exclusions.
Data collection	Phylogenetic data were collected by GTL from the literature. Ecological and fossil age data were collected by ARDP and PDM from the literature and from the paleobiology database.
Timing and spatial scale	NA - All published data were collected.
Data exclusions	NA
Reproducibility	NA - All analyses are computational in nature and the results can be replicated.
Randomization	NA - randomisation is not relevant to the nature of the data or the type of study.
Blinding	NA - blinding is not relevant to the nature of the data or the type of study.
Did the study involve field work?	<input type="checkbox"/> Yes <input checked="" type="checkbox"/> No

## Reporting for specific materials, systems and methods

We require information from authors about some types of materials, experimental systems and methods used in many studies. Here, indicate whether each material, system or method listed is relevant to your study. If you are not sure if a list item applies to your research, read the appropriate section before selecting a response.



## Materials & experimental systems

n/a	Included in the study
<input checked="" type="checkbox"/>	<input type="checkbox"/> Antibodies
<input checked="" type="checkbox"/>	<input type="checkbox"/> Eukaryotic cell lines
<input checked="" type="checkbox"/>	<input type="checkbox"/> Palaeontology and archaeology
<input checked="" type="checkbox"/>	<input type="checkbox"/> Animals and other organisms
<input checked="" type="checkbox"/>	<input type="checkbox"/> Clinical data
<input checked="" type="checkbox"/>	<input type="checkbox"/> Dual use research of concern
<input checked="" type="checkbox"/>	<input type="checkbox"/> Plants

## Methods

n/a	Included in the study
<input checked="" type="checkbox"/>	<input type="checkbox"/> ChIP-seq
<input checked="" type="checkbox"/>	<input type="checkbox"/> Flow cytometry
<input checked="" type="checkbox"/>	<input type="checkbox"/> MRI-based neuroimaging