

This is a repository copy of *Fine-scale bee species distribution models:Hotspots of richness and endemism in South Africa with species-area comparisons*.

White Rose Research Online URL for this paper:

<https://eprints.whiterose.ac.uk/209917/>

Version: Published Version

---

**Article:**

Melin, Annalie, Beale, Colin M. [orcid.org/0000-0002-2960-5666](https://orcid.org/0000-0002-2960-5666), Manning, John C. et al. (1 more author) (2024) Fine-scale bee species distribution models:Hotspots of richness and endemism in South Africa with species-area comparisons. *Insect conservation and diversity*. ISSN 1752-458X

<https://doi.org/10.1111/icad.12715>

---

**Reuse**





This article is distributed under the terms of the Creative Commons Attribution (CC BY) licence. This licence allows you to distribute, remix, tweak, and build upon the work, even commercially, as long as you credit the authors for the original work. More information and the full terms of the licence here:

<https://creativecommons.org/licenses/>

**Takedown**

If you consider content in White Rose Research Online to be in breach of UK law, please notify us by emailing [eprints@whiterose.ac.uk](mailto:eprints@whiterose.ac.uk) including the URL of the record and the reason for the withdrawal request.

# Fine-scale bee species distribution models: Hotspots of richness and endemism in South Africa with species-area comparisons

Annalie Melin<sup>1,2</sup>  | Colin M. Beale<sup>3,4,5</sup>  | John C. Manning<sup>1,6</sup>  |  
Jonathan F. Colville<sup>7</sup> 

<sup>1</sup>Compton Herbarium, South African National Biodiversity Institute, Claremont, South Africa

<sup>2</sup>African Centre for Coastal Palaeoscience, Nelson Mandela University, Port Elizabeth, South Africa

<sup>3</sup>Department of Biology, University of York, York, UK

<sup>4</sup>Leverhulme Centre for Anthropocene Biodiversity, Department of Biology, University of York, York, UK

<sup>5</sup>York Environmental Sustainability Institute, University of York, York, UK

<sup>6</sup>Research Centre for Plant Growth and Development, School of Life Sciences, University of KwaZulu-Natal, Scottsville, South Africa

<sup>7</sup>Statistics in Ecology, Environment and Conservation, Department of Statistical Sciences, University of Cape Town, Cape Town, South Africa

## Correspondence

Annalie Melin, Compton Herbarium, South African National Biodiversity Institute, Claremont, South Africa.  
Email: [annalie.melin@gmail.com](mailto:annalie.melin@gmail.com)

## Funding information

Natural Science Collections Facility; National Research Foundation, Grant/Award Number: UID127738; Mapula Trust

Editor/Associate Editor: Laurence Packer

## Abstract

1. While global patterns of bee diversity have been modelled, our understanding of fine-scale regional patterns is more limited, particularly for under-sampled regions such as Africa. South Africa is among the exceptions on the African continent; its bee fauna (ca. 1253 species) has been well collected and documented, including mass digitising of its natural history collections. It is a region with high floral diversity, high habitat heterogeneity and variable rainfall seasonality.
2. Here, we combine a South African bee species distributional database (877 bee species) with a geospatial modelling approach to determine fine-scale ( $\sim 11 \times 11$  km grid cell resolution) hotspots of bee species richness, endemism and range-restricted species.
3. Our analyses, based on the probabilities of occurrence surfaces for each species across 108,803 two-minute grid cells, reveal three bee hotspots of richness: Winter rainfall, Aseasonal rainfall and Early-to-late summer rainfall. These hotspots contain large numbers of endemic and geographically restricted taxa. Hotspots with particularly high bee diversity include the Fynbos, Succulent Karoo and Desert biomes; the latter showing 6–20 times more species per unit area than other biomes. Our results conform with global species-area patterns: areas of higher-than-expected bee density are largely concentrated in Mediterranean and arid habitats.
4. This study further enhances our knowledge in identifying regional and global hotspots of richness and endemism for a keystone group of insects and enabling these to be accounted for when setting conservation priorities.

## KEYWORDS

Apoidea, endemic species, natural history collection data, range-restricted species, species density, weighted endemism

This is an open access article under the terms of the [Creative Commons Attribution](https://creativecommons.org/licenses/by/4.0/) License, which permits use, distribution and reproduction in any medium, provided the original work is properly cited.

© 2024 The Authors. *Insect Conservation and Diversity* published by John Wiley & Sons Ltd on behalf of Royal Entomological Society.

## INTRODUCTION

Bees are keystone pollinators for both wild flowering plants (Neff & Simpson, 1993; Kearns & Inouye, 1997; Ollerton et al., 2011) and agricultural crops (Garibaldi et al., 2013; Klein et al., 2007). Despite their ecological and economic importance, a major drawback in developing effective conservation priorities is our limited understanding of the patterns of bee diversity at finer scales, including local hotspots of richness and range-restricted taxa. To remedy this, there has been an ongoing effort to mine data from natural history collections (Bartomeus et al., 2018; Bystrakova et al., 2018; Orr et al., 2021). Such data have also been used as an effective tool in assessing long-term changes in bee diversity and species declines due to global change, and in identifying priority areas for their conservation (Bartomeus et al., 2013, 2018; Critchlow et al., 2022; Kougoumoutzis et al., 2022; Soroye et al., 2020; Zattara & Aizen, 2021).

Before the mass digitization of natural history collections, bee biologist Charles Michener, using his accumulated expertise and interpretation of the literature, first described global patterns of bee species richness as highest in warm temperate, xeric regions of the world (Michener, 1979). This pattern contrasts with the diversity of many other taxonomic groups, which are concentrated in the tropics following a latitudinal gradient of diversity (Gaston, 2000). A recent global analysis modelled bee species richness using digitised natural history collection data (Orr et al., 2021). It confirmed Michener's descriptive patterns, finding bee species richness to be highest at mid-latitudes, especially in warm temperate and xeric regions, showing a bimodal latitudinal richness gradient (Orr et al., 2021).

In addition to this study, several macroecological analyses of bee richness have been done across global or biogeographic regions (Bystrakova et al., 2018; Kaloveloni et al., 2018; Leclercq et al., 2023; Michez et al., 2009; Patiny & Michez, 2007; Williams, 1998). Surprisingly, few studies investigating fine-scale (approximately  $<30 \times 30$  km grid cell) patterns of bee richness and endemism have been undertaken at the country level (i.e., regional scale) (but see Kuhlmann (2009); Kougoumoutzis et al. (2022); Patiny and Michez (2007)). Analysis at this geographic scale requires data of sufficient quantity and precision using the widest taxonomic coverage. Although regions of interest could potentially be extracted from currently available global species richness maps (e.g., Bystrakova et al., 2018; Orr et al., 2021), there are several limitations to using these datasets to assess local patterns within regions. These include using coarse-resolution data (e.g., ranging from  $110 \times 110$  to  $550 \times 550$  km grid cells), using a taxonomic subset of the data (e.g., family Colletidae) and projecting modelled Western Hemisphere bee data on to Eastern Hemisphere regions. Coarse-resolution data are likely to obscure fine-scale richness patterns, particularly in regions with high habitat heterogeneity (Cowling et al., 2017; Cowling & Lombard, 2002). The subfamily Colletinae has been put forward as a taxon to represent richness patterns for all bees (Bystrakova et al., 2018); however, this could introduce spatial biases. For example, the richness pattern retrieved for South Africa by Orr et al. (2021), which used a more comprehensive dataset of bees, strongly contrasts with Bystrakova et al.'s (2018)

richness pattern. Projecting Western Hemisphere bee models onto Eastern Hemisphere regions (e.g., Orr et al., 2021) may be problematic due to inherent biotic differences, distinct species compositions and different evolutionary histories (De Palma et al., 2016; Kreft & Jetz, 2007; Michener, 1979; Ricklefs, 2004). In addition, the diverse environmental variability between hemispheres, encompassing climate disparities and variations in habitat structures (Kreft & Jetz, 2007; Wiens, 2011), poses a challenge when extrapolating models based on geographically and taxonomically restricted data to other regions and taxa (De Palma et al., 2016; Elith & Leathwick, 2009). These limitations become less significant in data-rich regions, such as South Africa (Melin & Colville, 2019), where it would be more parsimonious to use the source data to model potential species distributions and quantify patterns of diversity.

The main aim of this paper is to explore patterns of bee species richness and endemism within South Africa, at a fine-scale resolution ( $\sim 11 \times 11$  km grid cell), and using a uniquely comprehensive digitised bee dataset that included representatives from all six bee families that occur in the region. South Africa is a region of high species richness (ca. 1253 species (Eardley & Coetzer, 2023)) and the Mediterranean and arid habitats in the southwest of the country are particularly rich in bees (Bystrakova et al., 2018; Kuhlmann, 2009; Michener, 1979, 2007; Orr et al., 2021). The South African bee fauna is characterised by high levels of endemism (Bystrakova et al., 2018; Kuhlmann, 2009) and is regarded as evolutionary significant since it includes some of the most early diverging bee lineages (Danforth et al., 2006; Litman et al., 2011), as well as genera showing specialised pollinator adaptations (Steiner & Whitehead, 1990; Whitehead & Steiner, 1993).

Uniquely within the African continent, the bee fauna of the region has received a substantial amount of focused collection and taxonomic effort over the past 250 years, including mass digitization of its natural history collections (Melin & Colville, 2019). In this study, we use publicly available natural history collection data and employ a geospatial modelling approach (Colville et al., 2020; Mecenero et al., 2015). This allows us to produce the most detailed assessment of South African bee diversity and distribution to date, with the aim of delimiting local hotspots of bee species richness and endemism. We also used richness-weighted indices to identify patterns of richness for restricted and widespread species (Crisp et al., 2001). Furthermore, we determined the extent to which there is spatial congruence among patterns of species richness, national endemic richness and range-restricted species richness, as well as between national endemic richness and range-restricted endemic richness.

The high bee diversity of Mediterranean and arid climate regions has attracted much attention over the past few years (Kaloveloni et al., 2018; Leclercq et al., 2023; Marshall et al., 2023; Meiners et al., 2019; Orr et al., 2021). We place South Africa's bee diversity within this global pattern and compare how richness scales with area (Gotelli & Colwell, 2001) within South Africa—taking into account different biomes and rainfall seasons—and with studies from other arid and Mediterranean regions worldwide. Our approach involves estimating species density of bees using a species-area relationship, building on recent studies that have employed this methodology (Meiners

et al., 2019; Minckley & Radke, 2021). Comparing bee density across these different geographic areas can provide insights into understanding global patterns of bee diversity (Minckley & Radke, 2021).

Detailed, modern biogeographic studies on South Africa's insect diversity are lacking (Colville et al., 2014; Melin & Colville, 2019). Consequently, insects are underrepresented in conservation planning, primarily due to the large numbers of species involved, and the outdated taxonomy for many groups, compounded by a decline in taxonomic expertise (Chown & McGeoch, 1995; Hamer, 2012; Scholtz & Chown, 1995). The results of this study should further enhance our knowledge in identifying important areas of insect richness and endemism in South Africa at a fine geographical scale and enabling these hotspots to be accounted for when setting conservation priorities. Given the idiosyncratic patterns of bee richness (e.g., highest in Mediterranean, xeric and temperate habitats) (Bystrrikova et al., 2018; Michener, 2007; Orr et al., 2021), finer-scale data may also help guide future studies, which aim to understand the macroecological factors driving bee diversity.

## MATERIALS AND METHODS

### Determining hotspots of bee richness from species distribution models

We obtained species locality records from digitised natural history collections, mostly (86%) from South African institutions: Albany Museum, Iziko Museums of South Africa, the National Collections of Insects and Ditsong Museums of South Africa. The remainder of the data is derived from institutions outside of South Africa; publicly available on GBIF.org (GBIF.org, 2023a, 2023b, 2023c, 2023d, 2023e, 2023f). The South African datasets constitute over 250 years of collecting bees including ad hoc and targeted collecting by museums and entomologists. Melin and Colville (2019) and Coetzer and Eardley (2019) provide detailed historic information including a summary of institutional and collector contributions. Together this original dataset is comprised of 49,498-point locality records, which underwent a range of quality checks to improve its reliability and accuracy. For common geospatial issues found in natural history collections (Robertson et al., 2016) such as point-localities outside of their range (including points out at sea) for South Africa, we verified their accuracy and either corrected or removed them if georeferencing was not feasible. Similarly, disjunct distributions were identified as any data points >200 km from its nearest neighbour. These were flagged as potential outliers and manually checked and corrected.

We restricted the data to include only valid species by removing records without a species name (e.g., spp. and sp.). To maintain taxonomic identity, we followed the published regional checklist for South African bees (Eardley & Coetzer, 2023) and concerning synonymy and spelling we followed Eardley & Urban (2010) and Coetzer and Eardley (2019). Our cleaned dataset consisted of 26,474-point locality records across 877 bee species (ca. 70% of South African species), of which 234 species had less than five-point locality records. For South African bee species that also occur in Lesotho and Eswatini,

we retained the occurrence records in our database for spatial continuity.

Several biases are inherent in the presence-only or 'atlas-type' data used here (Bartomeus et al., 2018; Graham et al., 2004). For example, collector effort might be biased towards areas that are accessed more easily (e.g., towns, cities and road verges) as opposed to areas that are difficult to access. Also, collectors may target species of special interest over common taxa (Bartomeus et al., 2018; Graham et al., 2004; Mecenero et al., 2015; Melin & Colville, 2019). Another limitation of natural history collection data is that it provides information on where species are present, not where they are absent. However, biases can be reduced by combining such data with appropriate statistical analyses (Araújo et al., 2019; Barbet-Massin et al., 2012; Colville et al., 2020; Pearce & Boyce, 2006). To account for these biases, we employed a geospatial modelling technique (Mecenero et al. (2015) and recently used by Colville et al. (2020)) to interpolate the distribution records for each bee species and to calculate a continuous probability of occurrence surface for each species at a 2-min grid cell scale (~11 × 11 km). Grid cells of this scale are considered an appropriate spatial scale for capturing the highly heterogeneous habitats of South African landscapes (e.g., Colville et al. (2020)), such as steep upland/lowland gradients and floristic and edaphic transitions. Using interpolated species distributions offered advantages over using raw presence-only data, as our measure of richness and endemism were not overly biased by gaps in the data (i.e., false absences).

We followed the same modelling approach ('Spatial Model 1') and code described in detail by Mecenero et al. (2015) and that had built on earlier models by Hengl et al. (2009). In summary, for each bee species, we built a model at 2-min resolution combining point pattern analysis methods with environmental niche information, to account for ecological similarity, inferred observer effort and geographical distance. This process involved two stages. The first stage involved selecting a sample of non-focal species records to act as pseudo-absences (reflecting the pattern of observation in the dataset), and the second stage involved interpolating distributions based on presence and pseudo-absence records. The first stage consisted of several separate steps: (1) mapping all records of the focal species and generating a kernel density estimate for records of this species, (2) identifying all records of all other bee species >100 m from records of the focal species and generating similar kernel density estimates, (3) computation of the difference in density estimates between focal and non-focal species (an approximate index of the probability of encountering the focal species), (4) computation of an environmental envelope within a principal component analysis of rainfall (mean annual rainfall and rainfall season) (Schulze, 2007) and temperature variables (mean winter and mean summer temperature) (Schulze, 2007), (5) computing the environmental distance between all 2-min raster cells and the centroid of the environmental envelope occupied by the focal species and (6) sampling records of the non-focal species using the environmental distance and geographic probability of encountering the focal species to bias selection towards locations where absence was most likely. Once pseudo-absence records were selected, the second stage of analysis used regression kriging of the presence/absence points onto the 2-min raster surface,

using the rainfall and temperature covariates. For 234 bee species recorded from <5 locations, we were unable to accurately interpolate distribution and we therefore generated a raster map with presence (1) and assumed absence (0) directly from the raw data. One of us (A.M.) verified the modelled species distributions for groups they have detailed knowledge on by checking the maps against known distributions. Mecenero et al. (2015) undertook the same approach and found that modelled species distributions matched expert opinion, stressing the general accuracy of their modelling approach.

Our final modelled bee dataset consisted of probabilities of occurrence surfaces for each bee species across 108,083 2-min grid cells. Species richness and endemism were calculated for each 2-min grid cell as the summed probability surfaces for all our bee species.

### Determining hotspots of endemism and range-restricted species

To determine endemic species richness, we compiled a national list of endemic bee species (646 species) from Eardley and Coetzer (2023). All national endemic species are not known to occur in Lesotho or Eswatini. However, our grid cells fell across political boundaries, and we therefore allowed our models to predict species distributions across these artificial boundaries. Of the 646 listed endemic bee species, our modelled species distributional dataset contained 341 (~53%). As with overall species richness, we summed the probability of occurrence for each endemic species in a grid cell to obtain a measure of endemic bee species richness.

We determined hotspots of range-restricted species richness for all species and for national endemics using two indices (weighted endemism [WE] and corrected WE [CWE]) proposed by Crisp et al. (2001) and modified to accept our probability of occurrence for each species. CWE accounts for the correlative role of species richness in determining endemic and range-restricted richness patterns. To estimate WE, we weighted the probability of occurrence for each species by the inverse of their range (1/number of cells occupied by a species, summed across all species in a cell), and for CWE we correct WE for overall species richness in a cell (WE/cell richness).

### Congruence of species richness with endemic richness and range-restricted species richness

We used Pearson's correlations to compare the spatial similarity of overall species richness with national endemic richness and range-restricted species richness. Similarly, national endemic richness was correlated with range-restricted endemic richness.

### Bee density: Biomes and rainfall seasonality

We calculated bee richness for South Africa's biomes (Mucina & Rutherford, 2006) and for rainfall seasonality (Schulze, 2007) by performing spatial overlays. Biomes and rainfall seasonality have been

considered important drivers of biogeographic patterns of plant and insect diversity (Colville et al., 2014; Procheş & Cowling, 2007).

We calculated the species density for South African biomes and rainfall seasons by dividing the number of species by the respective area of the biome ( $n = 7$ ; Figure 3a) or rainfall season ( $n = 6$ ; Figure 3b). To compare density among biomes or rainfall seasons, we calculated the ratio by dividing density of one biome/rainfall season by another.

### Bee density: Global comparisons

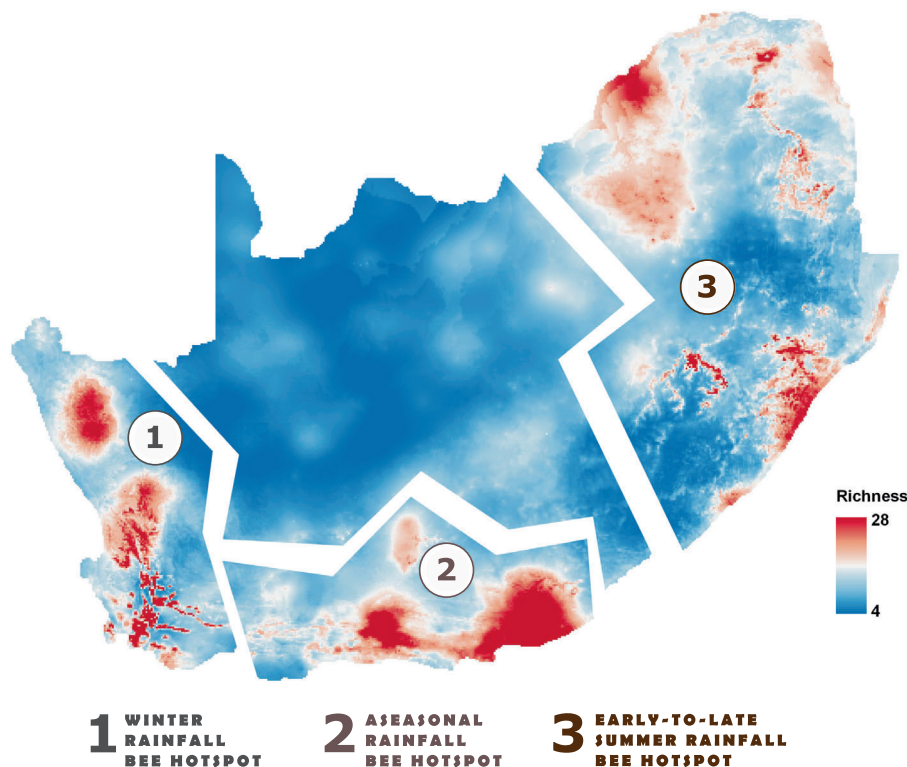
To compare South Africa's bee biome density with areas sharing similar habitat and climate conditions, we collated data for arid and Mediterranean sub-regions from nine published studies and one unpublished dataset (see Data S1). To also make comparisons at a global scale, we took advantage of recently collated (Orr et al., 2021) regional-level data for 170 countries with areas over 5000 km<sup>2</sup> (Data S1). To ascertain how richness scales with area, we used a species-area relationship as a double logarithmic equation (Rosenzweig, 1995, and as used recently in bee density studies by Meiners et al., 2019; Minckley & Radke, 2021) based on the species richness and area data presented in Data S1.

To assess whether studies conducted in arid and Mediterranean areas ( $n = 17$ , sub-region and biome data in Data S1) recorded more or fewer species than expected, we followed Meiners et al.'s (2019) and Minckley and Radke's (2021) approaches and measured the distance from each study's species-area point to the overall log-log regression line. With these measurements, we generated a bar plot to rank and compare how much the observed number of bee species deviates, either above or below, relative to the predicted number of bee species.

All analyses were carried out using the program R version 4.1.2 (R Core Team, 2021) and packages: 'ggplot2' (Wickham, 2009) was used to plot the species-area relationship for different countries, biomes and sub-regions, and 'sp' (Bivand et al., 2013) 'spatstat' (Baddeley et al., 2015), 'rgdal' (Bivand et al., 2018) and 'gstat' (Graler et al., 2016) were used to perform species distribution models and spatial overlays. Species richness maps, as in Figures 1–3, were rendered in QGIS version 2.18.14 (QGIS Development Team, 2023).

## RESULTS

Species richness concentrates into three distinct hotspots (Figures 1–3): Winter rainfall bee hotspot the arid and mesic winter rainfall zone along the west coast and incorporating parts of the Fynbos and Succulent Karoo biomes; Aseasonal rainfall bee hotspot the mesic aseasonal rainfall zone extending along the south coast incorporating parts of the Fynbos, Succulent Karoo and Albany Thicket biomes and encroaching inland towards the drier interior of the very late summer rainfall zone; and Early-to-late summer rainfall bee hotspot a narrow band along the east coast (subtropical) extending inland into the high-altitude montane region of the eastern side of the Drakensberg Mountains, and comprising the north-eastern extent of the



**FIGURE 1** South African bee richness hotspots at a  $\sim 11 \times 11$  km grid cell resolution: (1) Winter rainfall bee hotspot: along the west coast and incorporating parts of the Fynbos and Succulent Karoo biomes, (2) Aseasonal rainfall bee hotspot: extending along the south coast incorporating parts of the Fynbos, Succulent Karoo and Albany Thicket biomes, (3) Early-to-late summer rainfall bee hotspot: a narrow band along the east coast extending inland into the high-altitude montane region of the eastern side of the Drakensberg Mountains, and including parts of the Grassland and Savanna biomes.

summer rainfall zone and including parts of the Grassland and Savanna biomes.

National endemic richness (unweighted) is concentrated in the western parts of South Africa, around the Winter rainfall bee hotspot and the Aseasonal rainfall bee hotspot (Figure 2b). Hotspots of unweighted range-restricted species (Figure 2c) and range-restricted endemic species (Figure 2d) are also concentrated around these two richness hotspots, although for the latter category, the Winter rainfall bee hotspot is extended as a hotspot of range-restricted endemic species.

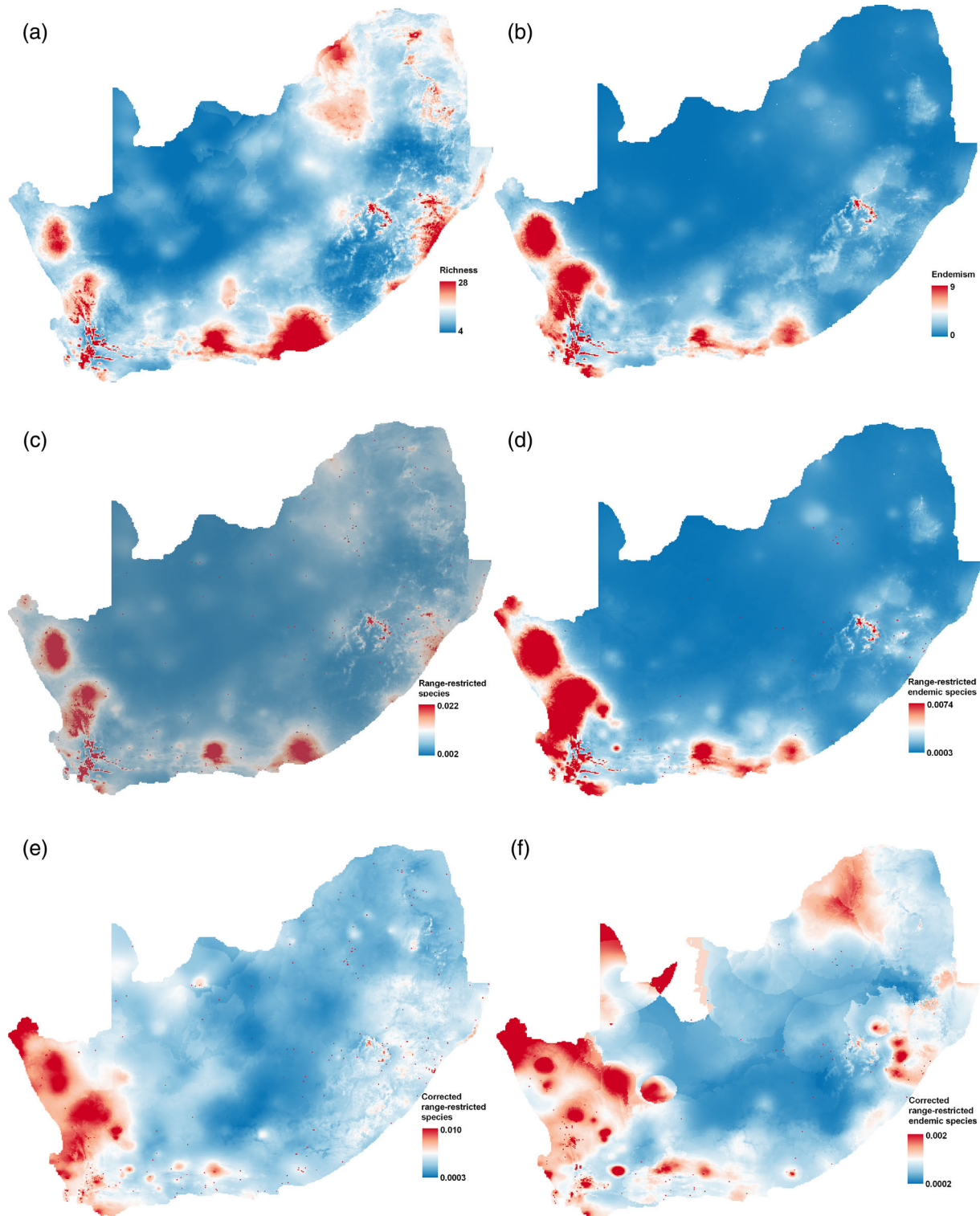
After weighting for richness of national endemics, both the Winter rainfall bee hotspot and the Aseasonal rainfall bee hotspot become more conspicuous, whereas the Early-to-late summer rainfall bee hotspot is less so, with only the eastern KwaZulu-Natal Drakensberg Mountains being rich in both species and national endemics. When correcting for the richness of range-restricted species, the Winter rainfall bee hotspot is emphasised as an area with a high proportion of bee species with narrow geographic ranges (Figure 2e). However, when correcting for range-restricted endemic richness a somewhat different pattern is retrieved (Figure 2f). The winter rainfall zone is retained but extends further into the central arid interior and includes elements of the Aseasonal rainfall bee hotspot as well as areas around the Early-to-late summer rainfall bee hotspot.

There was a significant positive correlation between species richness and national endemic richness (Pearson's  $R = 0.64$ ,  $p < 0.001$ ), as well as

between species richness and range-restricted species richness (Pearson's  $R = 0.87$ ,  $p < 0.001$ ). Despite the high correlations among these three indices, there are some differences in the locations of the hotspots (Figure 2a–c). We also found a strong positive correlation between the spatial patterns of national endemic richness and range-restricted endemic richness (Pearson's  $R = 0.93$ ,  $p < 0.001$ ; Figure 2b,d).

Comparisons across biomes and rainfall seasons showed that the number of bee species was similar (Table 1); however, when values were weighted on area size, species density was higher in the smaller-sized biomes and rainfall seasons (Figure 4a and Tables 2 and 3). The Fynbos, Succulent Karoo and Desert biomes, making-up  $\sim 16\%$  of the total area of South Africa (Mucina & Rutherford, 2006), had almost six times as many species per unit area than the three largest biomes (Savanna, Grassland and Nama Karoo), which make-up the bulk of South Africa (Table 2). The Desert biome showed the highest species density, with approximately six times more species per unit area than the Fynbos and Succulent Karoo biomes, and  $>20$  times more species per unit area than the Grassland, Savanna and Nama-Karoo biomes. A similar pattern was seen for rainfall seasonality, with the winter and aseasonal rainfall areas ( $\sim 15\%$  of the total area of South Africa) having approximately two and five times more species per unit area than the summer rainfall areas, respectively (Table 3).

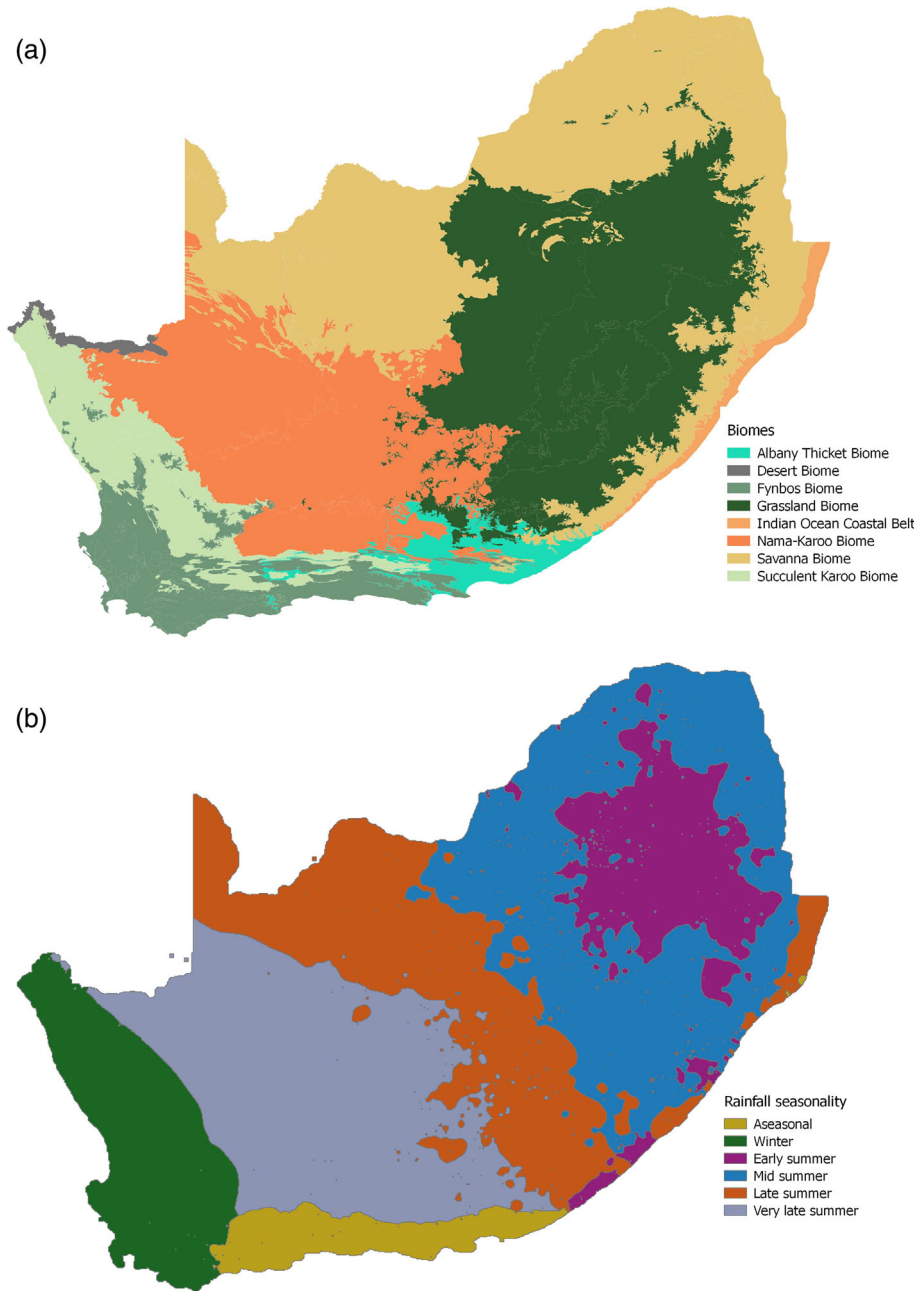
Area was a poor predictor of bee species richness explaining 6.6% of the variation in bee richness ( $F_{1,184} = 14.13$ ,  $p < 0.001$ ) (Figure 4a).



**FIGURE 2** Spatial patterns of South African bee diversity (a–f) at a  $\sim 11 \times 11$  km grid cell resolution.

All South Africa's biomes fell above the regression line and outside of the 95% confidence interval indicating that they have higher bee species density than predicted by area (Figure 4a,b). Although all biomes fell above the regression line, the smallest biomes had the largest differences in the number of species observed relative to the number of species predicted (Figure 4b). These small-sized biomes are those with arid and Mediterranean climates.

Comparison of areas with similar arid and Mediterranean climates revealed that the San Bernardino Valley (Arizona/Sonora) holds the highest rank, followed in descending order by Pinnacles National Park (California), Lesvos (Greece), Yosemite National Park (California), and Grand Staircase Escalante National Monument (Utah) (Figure 4b). These rankings surpassed those of all South Africa's biomes. Notably, the Albany Thicket and Fynbos biomes outperformed analogous areas



**FIGURE 3** Biomes (a) and rainfall seasonality (b) of South Africa.

such as Mediterranean Chile and Southwestern Australia (Figure 4b). Additionally, the more arid Succulent Karoo and Desert biomes secured higher rankings than the Mojave National Preserve, San Rafael Desert and Desert Chile.

## DISCUSSION

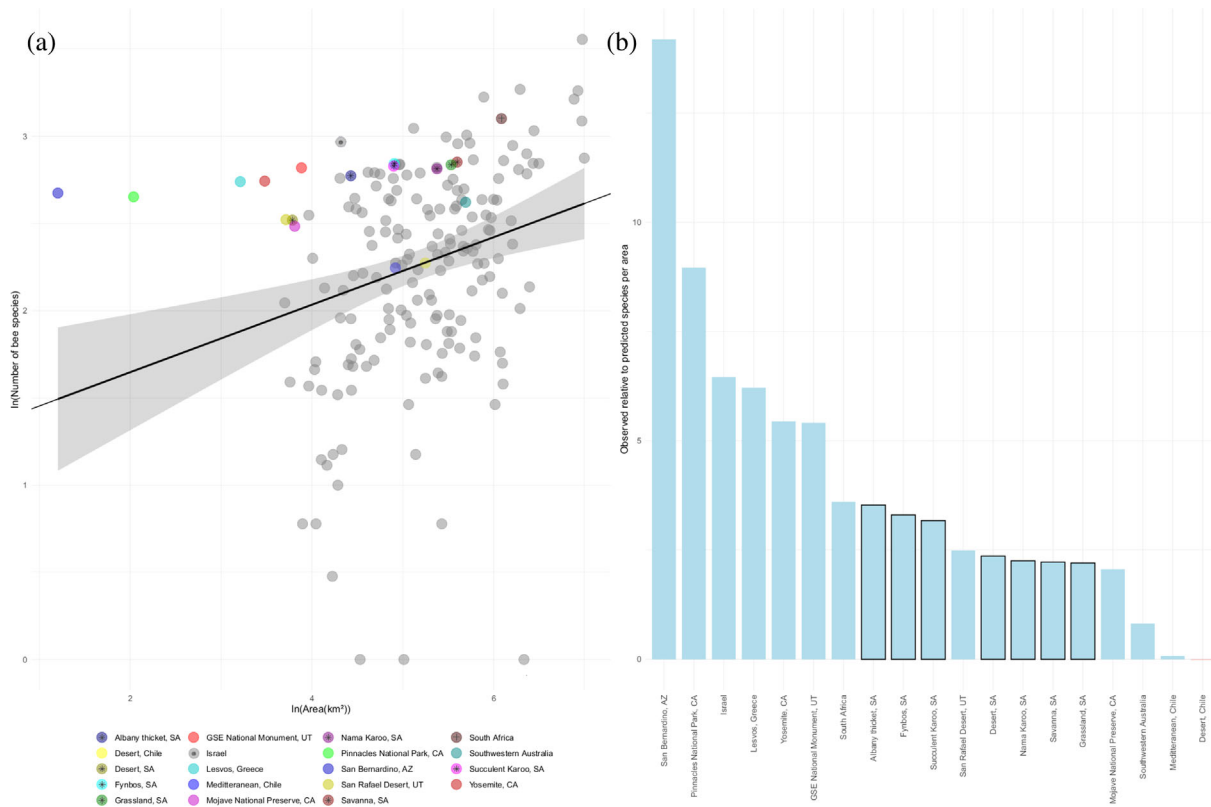
Using the widest taxonomic coverage of South African bees (877 species across 85 genera) to date, we identified three main bee richness hotspots—two are closely aligned with the winter and aseasonal

rainfall regions and the third with the summer rainfall region (Figures 1 and 3b). Hotspots of endemics were also predominantly located within the winter and aseasonal rainfall areas of the Greater Cape Floristic Region (GCFR), except for a small high-elevation hotspot of endemism found in the summer rainfall Drakensberg Mountains. Patterns of bee diversity have been assessed within South Africa to some extent, where Kuhlmann (2009) focused primarily on the bee families Apidae and Colletidae, Bystrikova et al. (2018) emphasised Colletidae, and Orr et al. (2021) used projected data for all families. This is the first fine-scale study using geospatial modelling to assess patterns of richness, endemism and range-restricted taxa. In



**TABLE 1** Number of bee species and national endemic species found in South African biomes and rainfall seasons.

Species richness (endemics)						
Biomes						
Fynbos	Succulent Karoo	Savanna	Grassland	Albany Thicket	Desert	Nama-Karoo
698.29 (233.50)	674.64 (221.90)	712 (215.00)	687.00 (221.00)	594.00 (183.25)	330.83 (114.11)	650.98 (200.00)
Rainfall seasonality						
All year	Winter	Early-summer	Mid-summer	Late-summer	Very late-summer	
650.83 (208.62)	718.55 (246.92)	737.00 (229.00)	663.90 (201.95)	667.00 (206.00)	669.00 (205.00)	



**FIGURE 4** Relationship between area and the number of bee species (log-transformed): (a) Each data point ( $n = 186$ ; Data S1) represents a country, biome, and sub-region. The solid black line represents the linear regression fit, and the grey shaded region around the line shows the 95% confidence interval. Data points that fall above the line show higher than expected bee richness for their area size. Labels for South African biomes (circle with a star) and selected sub-regions have also been included for comparison and aesthetics; two countries have been highlighted: South Africa (this study; circle with a cross) and Israel (region with the highest bee density; circle with a dot). (b) Barplot of the difference in the number of bee species observed relative to the number of bee species predicted by the regression line plotted in panel A. Areas that recorded more bee species than expected are shown in blue with the exception of one area shown in red that recorded less bee species than expected. South African biomes are outlined in black. The following have been abbreviated: GSE National Monument, Grand Staircase Escalante National Monument; SA, South Africa; for states in North America: AZ, Arizona; CA, California; UT, Utah. Full study details are given in Data S1.

addition, it is the first regional study to do this for any South African insect group.

We attribute South Africa's remarkably rich bee fauna in the Winter rainfall bee hotspot to the Succulent Karoo and Fynbos biomes (Figures 2a–f and 3a), and the Desert biome (Figures 2d–f and 3a). Bee density in these winter rainfall biomes is considerably higher compared with the larger summer rainfall South African biomes

(Figure 4a,b). This western region is characterised by having a high proportion of distinct bee genera: *Scapter*, *Fidelia* and *Patellapis* (Danforth et al., 2013; Hedtke et al., 2013; Litman et al., 2011; Michener, 1979), which elevates this hotspot's profile as an important area for bee conservation. Added to this, the region is also of evolutionary significance for bees as a centre of diversity for Melittidae, a phylogenetically deep lineage of bees and sister to all other bees

**TABLE 2** Comparisons of number of species density across South Africa's biomes.

Biomes	Fynbos	Succulent Karoo	Savanna	Grassland	Albany Thicket	Desert	Nama-Karoo
Fynbos	1.00	1.02	4.83	4.30	0.39	0.16	3.17
Succulent Karoo	0.98	1.00	4.74	4.22	0.38	0.16	3.11
Savanna	0.21	0.21	1.00	0.89	0.08	0.03	0.66
Grassland	0.23	0.24	1.12	1.00	0.09	0.04	0.74
Albany Thicket	2.55	2.60	12.32	10.97	1.00	0.41	8.09
Desert	6.25	6.38	30.20	26.87	2.45	1.00	19.82
Nama-Karoo	0.32	0.32	1.52	1.36	0.12	0.05	1.00

Note: Comparisons are read left to right, and values indicate the ratio after dividing species density of one biome by another. Biome area size (km<sup>2</sup>) from smallest to largest: Desert (6105.19); Albany Thicket (26862.81); Succulent Karoo (79367.41); Fynbos (80588.442); Nama Karoo (238102.22); Grassland (340669.32); Savanna (396837.03).

**TABLE 3** Comparisons of number of species density across South Africa's rainfall seasons.

Rainfall seasons	All year	Winter	Early-summer	Mid-summer	Late-summer	Very late-summer
All year	1.00	2.26	3.03	5.68	5.11	6.08
Winter	0.44	1.00	1.34	2.52	2.26	2.69
Early summer	0.33	0.74	1.00	1.88	1.69	2.01
Mid-summer	0.18	0.18	0.53	1.00	0.90	1.07
Late-summer	0.20	0.44	0.59	1.11	1.00	1.19
Very late-summer	0.16	0.37	0.50	0.93	0.84	1.00

Note: Comparisons are read left to right, and values indicate the ratio after dividing species density of one season by another. Rainfall season area size (km<sup>2</sup>) from smallest to largest: All-year (52272.04481); Winter (136589.81); Early-summer (149991.16); Late-summer (257857.34); Very-late-summer (305383.55); Mid-summer (318943.09).

(Danforth et al., 2013; Michez et al., 2008). The life history traits, such as the ancestral state of not lining their nests as seen in *Fidelia*, may explain the restriction of some lineages to arid environments (Litman et al., 2011). The winter rainfall Succulent Karoo and Desert (desert climates) and Fynbos (Mediterranean climate) biomes are recognised globally for their exceptional plant diversity, which is disproportionately high in comparison to its physical size and to other Mediterranean and desert regions (Cowling et al., 1998, 1999; Manning & Goldblatt, 2012; Mittermeier et al., 1998; Myers et al., 2000). Ecological factors associated with the high plant diversity within these biomes include fine-scale climatic, edaphic and topographic heterogeneity, fire regime, and biotic interactions (e.g., plant-pollinator coevolution) (Cowling et al., 2017). Areas within this region have also been strongly influenced by historical climatic stability, which is thought to have lowered rates of extinction and allowed for higher niche specialisation in plants (Colville et al., 2020; Cowling et al., 1998, 2015, 2017). This area is also known as a global centre for species richness for several other insect groups, for example, monkey beetles (Hopliini (Colville et al., 2018)), grasshoppers (Lentulidae (Otte, 2020)), weevils (Curculionidae (Hévin et al., 2022)), heelwalkers (Mantophasmatodea (Predel et al., 2012)) and several others (Colville et al., 2014). Findings to date suggest that plant species richness (Procheş et al., 2009; Wright & Samways, 1998), plant phylogenetic diversity (Procheş et al., 2009), soil-type preferences for nesting (Gess, 1992; Gess & Gess, 2014) and temperature (Botes et al., 2007; Stuckenberg, 1969)

are important ecological factors in explaining insect diversity in this western region. The generally strong relationship between plant and insect species diversity is likely due to both direct interactions and where both groups are responding to similar environmental factors (Colville et al., 2014; Procheş & Cowling, 2006).

Similar ecological factors to the Winter rainfall bee hotspot are likely to influence the diversity of bees in the western part of the Aseasonal rainfall bee hotspot because it is composed of Fynbos and Succulent Karoo vegetation (Cowling et al., 2017). This southern hotspot is characterised by having a high proportion (>50%) of species of *Compsomelissa* and *Allodapula*; both have distinctive life history traits related to their sociality and progressive feeding (Michener, 1979; Schwarz et al., 2003). The eastern part of the Aseasonal rainfall bee hotspot is also likely to be influenced by a high degree of habitat heterogeneity due to the transitional nature of several floristic elements found here: Succulent Karoo, Albany Thicket, Nama-Karoo, Savanna and Grassland biomes (Figure 3a). This region, also known as the Albany Centre, has a very old phytogeographic origin (Clark et al., 2009; Cowling & Procheş, 2005; Van Wyk & Smith, 2001), indicating an area of historical climatic stability (Colville et al., 2020; Potts et al., 2013), which may also contribute to its higher than expected bee diversity. Vertebrates (Perera et al., 2011) and several insect groups, for example, butterflies (Carcasson, 1964), damselflies (Dijkstra, 2007) and grasshoppers (Dirsch, 1965; Gordon et al., 2023) also have high species diversity in this region. After adjusting for

species richness, this hotspot maintains a higher concentration of geographically restricted taxa than would be expected based solely on species richness (Figure 2c,d). Although we have factored in collector effort through geospatial modelling, the Aseasonal rainfall bee hotspot might be the result of intensive collecting carried out by hymenopterists Sarah K. Gess and the late Friedrich W. Gess over a period of approximately 40 years (Gess & Gess, 2014; Melin & Colville, 2019). However, these hymenopterists conducted widespread sampling throughout the western parts of South Africa during this timeframe (Gess & Gess, 2014).

Between the extremes of the Winter rainfall bee hotspot and the Aseasonal rainfall bee hotspot, we see a large proportion of the GCFR as seemingly depauperate of bee diversity. Given that the Winter rainfall bee hotspot and the Aseasonal rainfall bee hotspot largely fall within the GCFR, with similar habitat and processes, it is conceivable that bee diversity is most likely higher in this area, for example, high species richness has been retrieved in well-sampled insects such as butterflies (Mecenero et al., 2013) in this area. This gap may be due to poor sampling (Melin & Colville, 2019) and therefore targeted surveying in this area, particularly in protected areas as seen in recent bee surveys (e.g., Meiners et al., 2019; Messinger Carril et al., 2018), could be used to establish if the Winter rainfall bee hotspot and the Aseasonal rainfall bee hotspot are contiguous across the south-eastern GCFR.

The Early-to-late summer rainfall bee hotspot is dominated by more widespread generalist bee species and shares many of the taxa with other Afrotropical areas (e.g., Eucerini (Eardley, 1989) and Melectini (Eardley, 1991)). The low numbers of endemic and range-restricted species richness in this hotspot, particularly away from the Drakensberg area, confirm this pattern (Figure 2b–d). In contrast, Kuhlmann (2009) using a restricted species dataset and at a coarse resolution (~200 × 200 km grid square) found the proportion of endemic bee species in the early-to-mid summer rainfall area to be almost equivalent to the winter rainfall area, although recognising that the true pattern is most likely considerably lower in the early-to-mid summer rainfall area and more in line with the results of this study. In the Early-to-late summer rainfall bee hotspot, other insects, such as butterflies (Mecenero et al., 2013, 2015), dragonflies (Deacon et al., 2020), and dung beetles (Davis, 2002) exhibit high species richness. Similar to bees, these insects demonstrate overall low values of endemism and share numerous widespread taxa with other Afrotropical areas.

As observed in other parts of the world, our bee richness and endemism patterns conform to the general pattern that bee faunas are highest in arid or Mediterranean climates (Michener, 1979; Orr et al., 2021). Across these regions, specific climatic factors and habitat heterogeneity including high floristic diversity rather than area size per se appear the more important variables in determining bee richness (but see Kaloveloni et al. (2018)). This scenario has also been hypothesized for other areas of exceptional bee richness, such as Pinnacles National Park in Central California (Meiners et al., 2019). Our results also show that these areas are not only disproportionately high in bee species richness but also high in endemics and species with narrow geographic ranges. This suggests that rates of bee diversification

and specialisation, and species turnover (beta diversity (e.g., Colville et al. (2002)), are associated with the high number of fine-scale floristic and edaphic niches of these areas (see also Cowling et al. (2015)).

In summary, the Mediterranean climate and arid areas in South Africa contain a high density of bee species and a large number of endemic and geographically restricted bee taxa. Although our diversity maps are based on 70% of South African bee species, adding records for missing species would most likely strengthen our hotspots. These hotspots have frequently been recognised as areas of high richness for a range of insects and plants. This study goes further by illustrating the entomofaunal distinctiveness of these hotspots in terms of disproportionately high numbers of species, endemics and range-restricted taxa. The strong correlations observed between diversity metrics suggest that species richness is a suitable indicator of endemic and range-restricted bees in South Africa.

## CONCLUSION

Understanding bee diversity at a regional scale can give insights into local scale patterns and can be highly informative for understanding broader global patterns of bee diversity. It can also provide important information on local areas of insect diversity, such as hotspots for conservation, areas of evolutionary interest where certain lineages are concentrated, and in understanding the historical biogeography of a region. The spatial patterns of species richness and endemism in South African bee fauna presented here corroborate but vastly extend the results of previous studies and conform with global patterns of unusually high bee diversity in Mediterranean and arid areas. The next steps in understanding these regional patterns will require an assessment of the underlying processes that shape them (Kaloveloni et al., 2018), particularly in the context of specialisation and the extraordinarily rich flora and the role of historical climatic stability. Future analysis, using our species distributional models, can also be extended to calculate other patterns of diversity such as beta-diversity (species turnover) and functional diversity (e.g., Leclercq et al., 2023; Marshall et al., 2023). Because of the high numbers of range-restricted taxa confined to small numbers of grid cells, habitat specialisation is most likely driving high species turnover and functional diversity in the Winter rainfall bee hotspot and the Aseasonal rainfall bee hotspot. As undertaken for plants (Cowling et al., 2015), comparisons across other global Mediterranean and arid areas of exceptional bee richness would also provide deeper insights into the drivers of bee diversity and the role of habitat heterogeneity, including floristic resources, and historical climate stability. In addition, determining the extent to which the existing protected area networks in South Africa, based predominantly on plant-based data (e.g., Skowno et al. (2018)), adequately cover the bee hotspots warrants further scrutiny. This could be expanded by taking into consideration the vulnerability of the South African bee fauna under several scenarios of global change (Kuhlmann et al., 2012). Finally, refining the hotspot boundaries presented here would require long-term inventories to ground truth these patterns.

## AUTHOR CONTRIBUTIONS

**Annalie Melin:** Conceptualization; methodology; data curation; formal analysis; funding acquisition; visualization; writing – original draft; writing – review and editing; investigation. **Colin M. Beale:** Methodology; formal analysis; writing – review and editing; resources; investigation; data curation. **John C. Manning:** Writing – review and editing; funding acquisition; resources. **Jonathan F. Colville:** Conceptualization; methodology; data curation; formal analysis; investigation; visualization; funding acquisition; writing – review and editing. [Correction added on 2 February 2024, after first online publication: The contribution of Jonathan F. Colville has been updated.].

## ACKNOWLEDGEMENTS

We wish to acknowledge the enormous contributions made by Sarah K. Gess (Albany Museum), Connal Eardley (National Collections of Insects) and Simon van Noort (Iziko Museums of South Africa) in managing and digitising the natural history collections. We thank Richard Cowling for reading and commenting on the manuscript and Terry Houston for advice on bee species numbers for Southwestern Australia.

## FUNDING INFORMATION

Annalie Melin was supported by Elizabeth Parker, the Mapula Trust, the Natural Science Collections Facility, and National Research Foundation (PDP postdoctoral research fellowship grant no. UID127738).

## CONFLICT OF INTEREST STATEMENT

The authors declare no conflicts of interest.

## DATA AVAILABILITY STATEMENT

The data that support the findings of this study are publicly available from GBIF.org: GBIF.org (2023) GBIF Occurrence Download, Colletidae. <https://doi.org/10.15468/dl.gktdhq>, GBIF.org (2023) GBIF Occurrence Download, Melittidae. <https://doi.org/10.15468/dl.byf3rz>, GBIF.org (2023) GBIF Occurrence Download, Megachilidae. <https://doi.org/10.15468/dl.87hk2g>, GBIF.org (2023) GBIF Occurrence Download, Andrenidae. <https://doi.org/10.15468/dl.vr67q8>, GBIF.org (2023) GBIF Occurrence Download, Apidae. <https://doi.org/10.15468/dl.wnamdv>, GBIF.org (2023) GBIF Occurrence Download, Halictidae. <https://doi.org/10.15468/dl.7rjdz2>, GBIF.org. (2023) GBIF Occurrence data for bee species of Southwestern Australia Download <https://doi.org/10.15468/dl.ksa8ng>.

## ORCID

Annalie Melin  <https://orcid.org/0000-0003-3393-1701>

Colin M. Beale  <https://orcid.org/0000-0002-2960-5666>

John C. Manning  <https://orcid.org/0000-0003-2886-8787>

Jonathan F. Colville  <https://orcid.org/0000-0003-2176-3077>

## REFERENCES

- Araújo, M.B., Anderson, R.P., Barbosa, A.M., Beale, C.M., Dormann, C.F., Early, R. et al. (2019) Standards for distribution models in biodiversity assessments. *Science Advances*, 5, 1–12.

- Baddeley, A., Rubak, E. & Turner, R. (2015) *Spatial point patterns: methodology and applications in R*. CRC Press, Taylor & Francis Group, Boca Raton, Florida.
- Barbet-Massin, M., Jiguet, F., Albert, C.H. & Thuiller, W. (2012) Selecting pseudo-absences for species distribution models: how, where and how many? *Methods in Ecology and Evolution*, 3, 327–338.
- Bartomeus, I., Ascher, J.S., Gibbs, J., Danforth, B.N., Wagner, D.L., Hedtke, S.M. et al. (2013) Historical changes in northeastern US bee pollinators related to shared ecological traits. *Proceedings of the National Academy of Sciences of the United States of America*, 110, 4656–4660.
- Bartomeus, I., Stavert, J., Ward, D. & Aguado, O. (2018) Historical colapheticallylections as a tool for assessing the global pollinator crisis. *Philosophical Transactions of the Royal Society B: Biological Sciences*, 374, 20170389.
- Bivand, R., Keitt, T. & Rowlingson, B. (2018) rgdal: bindings for the “Geospatial” Data Abstraction Library. R package.
- Bivand, S.R., Pebesma, E.J. & Gomez-Rubio, V. (2013) *Applied spatial data analysis with R*, 2nd edition. Springer, New York, NY.
- Botes, A., McGeoch, M.A. & Chown, S.L. (2007) Ground-dwelling beetle assemblages in the northern cape floristic region: patterns, correlates and implications. *Austral Ecology*, 32, 210–224.
- Bystrakova, N., Griswold, T.L., Ascher, J.S. & Kuhlmann, M. (2018) Key environmental determinants of global and regional richness and endemism patterns for a wild bee subfamily. *Biodiversity and Conservation*, 27, 287–309.
- Carcasson, R.H. (1964) A preliminary survey of the zoogeography. *African Journal of Ecology*, 2, 122–157.
- Chown, S.L. & McGeoch, M.A. (1995) South African terrestrial zoology: strengths, weaknesses and opportunities. *South African Journal of Science*, 91, 189–196.
- Clark, V.R., Barker, N.P. & Mucina, L. (2009) The Sneeuberg: a new centre of floristic endemism on the great escarpment, South Africa. *South African Journal of Botany*, 75, 196–238.
- Coetzer, W. & Eardley, C.D. (2019) Insights into 260 years of taxonomic research gained from the catalogue of Afrotropical bees. *African Invertebrates*, 60, 291–318.
- Colville, J.F., Beale, C.M., Forest, F., Altwegg, R., Huntley, B. & Cowling, R.M. (2020) Plant richness, turnover and evolutionary diversity track gradients of stability and ecological opportunity in a megadiversity centre. *Proceedings of the National Academy of Sciences*, 117, 20027–20037.
- Colville, J.F., Picker, M.D. & Cowling, R.M. (2002) Species turnover of monkey beetles (Scarabaeidae: Hopliini) along environmental and disturbance gradients in the Namaqualand region of the Succulent Karoo, South Africa. *Biodiversity and Conservation*, 11, 243–264.
- Colville, J.F., Picker, M.D. & Cowling, R.M. (2018) Feeding ecology and sexual dimorphism in a speciose flower beetle clade (Hopliini: Scarabaeidae). *PeerJ*, 6, e4632.
- Colville, J.F., Potts, A.J., Bradshaw, P.L., Measey, G.J., Snijman, D., Picker, M.D. et al. (2014) Floristic and faunal Cape biochoria: do they exist? In: Allsopp, N., Colville, J.F. & Verboom, G.A. (Eds.) *Fynbos: ecology, evolution and conservation of a megadiverse region*. Oxford University Press, Oxford, United Kingdom, pp. 73–92.
- Cowling, R.M., Bradshaw, P.L., Colville, J.F. & Forest, F. (2017) Levyns’ law: explaining the evolution of a remarkable longitudinal gradient in Cape plant diversity. *Transactions of the Royal Society of South Africa*, 72, 184–201.
- Cowling, R.M., Esler, K.J. & Rundel, P.W. (1999) Namaqualand, South Africa—an overview of a unique winter-rainfall desert ecosystem. *Plant Ecology*, 142, 3–21.
- Cowling, R.M. & Lombard, A.T. (2002) Heterogeneity, speciation/extinction history and climate: explaining regional plant diversity patterns in the Cape Floristic Region. *Diversity and Distributions*, 8, 163–179.

- Cowling, R.M., Potts, A.J., Bradshaw, P.L., Colville, J.F., Arianoutsou, M., Ferrier, S. et al. (2015) Variation in plant diversity in Mediterranean-climate ecosystems: the role of climatic and topographical stability. *Journal of Biogeography*, 42, 552–564.
- Cowling, R.M. & Procheş, Ş. (2005) Patterns and evolution of plant diversity in the Cape Floristic Region. *Biological Ecology*, 55, 273–288.
- Cowling, R.M., Rundel, P.W., Desmet, P.G. & Esler, K.J. (1998) Extraordinary high regional-scale plant diversity in southern African arid lands: subcontinental and global comparisons. *Diversity and Distributions*, 4, 27–36.
- Crisp, M.D., Laffan, S., Linder, H.P. & Monro, A. (2001) Endemism in the Australian flora. *Journal of Biogeography*, 28, 183–198.
- Critchlow, R., Cunningham, C.A., Crick, H.Q.P., Macgregor, N.A., Morecroft, M.D., Pearce-Higgins, J.W. et al. (2022) Multi-taxa spatial conservation planning reveals similar priorities between taxa and improved protected area representation with climate change. *Biodiversity and Conservation*, 31, 683–702.
- Danforth, B.N., Cardinal, S., Praz, C., Almeida, E.A.B. & Michez, D. (2013) The impact of molecular data on our understanding of bee phylogeny and evolution. *Annual Review of Entomology*, 58, 57–78.
- Danforth, B.N., Sipes, S., Fang, J. & Brady, S.G. (2006) The history of early bee diversification based on five genes plus morphology. *Proceedings of the National Academy of Sciences of the United States of America*, 103, 15118–15123.
- Davis, A.L.V. (2002) Dung beetle diversity in South Africa: influential factors, conservation status, data inadequacies and survey design. *African Entomology*, 10, 53–65.
- de Palma, A., Abrahamczyk, S., Aizen, M.A., Albrecht, M., Basset, Y., Bates, A. et al. (2016) Predicting bee community responses to land-use changes: effects of geographic and taxonomic biases. *Scientific Reports*, 6, 31153.
- Deacon, C., Samways, M.J. & Pryke, J.S. (2020) Determining drivers of dragonfly diversity patterns and the implications for conservation in South Africa. *Biological Conservation*, 245, 108548.
- Dijkstra, K.-D.B. (2007) Demise and rise: the biogeography and taxonomy of the Odonata of tropical Africa. PhD thesis, Leiden University, pp. 143–187.
- Dirsch, V.M. (1965) Revision of the family Pneumoridae (Orthoptera: Acridoidea). *Bulletin of the British Museum (Natural History)*, 15, 325–396.
- Eardley, C.D. (1989) The Afrotropical species of *Eucara* Friese, *Tetralonia* Spinola and *Tetraloniella* Ashmead (Hymenoptera: Anthophoridae). *Entomology Memoir Department of Agriculture and Water Supply Republic of South Africa*, 75, 1–62.
- Eardley, C.D. (1991) The Melectini in subsaharan Africa. *Entomology Memoir Department of Agricultural Development Republic of South Africa*, 82, 1–49.
- Eardley, C.D. & Coetzer, W. (2023) Catalogue of Afrotropical bees. Version 1.22. Agricultural Research Council. Checklist dataset. 8 July 2023. <https://doi.org/10.15468/u9ezbh>
- Eardley, C. & Urban, R. (2010). Catalogue of Afrotropical bees (Hymenoptera: Apoidea: Apiformes). *Zootaxa*, 2455, 1–548. <https://doi.org/10.11646/zootaxa.2455.1.1>
- Elith, J. & Leathwick, J.R. (2009) Species distribution models: ecological explanation and prediction across space and time. *Annual Review of Ecology, Evolution, and Systematics*, 40, 677–697.
- Garibaldi, L.A., Steffan-Dewenter, I., Winfree, R., Aizen, M.A., Bommarco, R., Cunningham, S.A. et al. (2013) Wild pollinators enhance fruits set of crops regardless of honey bee abundance. *Science*, 339, 1608–1611.
- Gaston, K.J. (2000) Global patterns in biodiversity. *Nature*, 405, 220–227.
- GBIF.org. (2023a) GBIF occurrence download, Colletidae. Available from: <https://doi.org/10.15468/dl.gktdhq> [Accessed 24th July 2023]
- GBIF.org. (2023b) GBIF occurrence download, Melittidae. Available from: <https://doi.org/10.15468/dl.byf3rz> [Accessed 24th July 2023]
- GBIF.org. (2023c) GBIF occurrence download, Megachilidae. Available from: <https://doi.org/10.15468/dl.87hk2g> [Accessed 24th July 2023]
- GBIF.org. (2023d) GBIF occurrence download, Andrenidae. Available from: <https://doi.org/10.15468/dl.vr67q8> [Accessed 24th July 2023]
- GBIF.org. (2023e) GBIF occurrence download, Apidae. Available from: <https://doi.org/10.15468/dl.wnamdv> [Accessed 24th July 2023]
- GBIF.org. (2023f) GBIF Occurrence download, Halictidae. Available from: <https://doi.org/10.15468/dl.7rjdz2> [Accessed 24th July 2023]
- Gess, S.K. (1992) Biogeography of the Masarine wasps (Hymenoptera: Vespidae: Masarinae), with particular emphasis on the southern African taxa and on correlations between Masarine and forage plant distributions. *Journal of Biogeography*, 19, 491.
- Gess, S.K. & Gess, F.W. (2014) *Wasps and bees in southern Africa*. Pretoria: SANBI Biodiversity Series, SANBI.
- Gordon, M.L., Couldridge, V.C.K., Engelbrecht, A. & Colville, J.F. (2023) Delimiting zoogeographic centres for South African Orthoptera. *Frontiers of Biogeography*, 15, 1948–6596.
- Gotelli, N.J. & Colwell, R.K. (2001) Quantifying biodiversity: procedures and pitfalls in the measurement and comparison of species richness. *Ecology Letters*, 4, 379–391.
- Graham, C.H., Ferrier, S., Huettman, F., Moritz, C. & Peterson, A.T. (2004) New developments in museum-based informatics and applications in biodiversity analysis. *Trends in Ecology and Evolution*, 19, 497–503.
- Graler, B., Pebesma, E. & Heuvelink, G. (2016) Spatio-temporal interpolation using gstat. *R Journal*, 8, 204–218.
- Hamer, M. (2012) An assessment of zoological research collections in South Africa. *South African Journal of Science*, 108, 1–11.
- Hedtke, S.M., Patiny, S. & Danforth, B.N. (2013) The bee tree of life: a supermatrix approach to apoid phylogeny and biogeography. *BMC Evolutionary Biology*, 13, 1–13.
- Hengl, T., Sierdsema, H., Radović, A. & Dilo, A. (2009) Spatial prediction of species' distributions from occurrence-only records: combining point pattern analysis, ENFA and regression-kriging. *Ecological Modelling*, 220, 3499–3511.
- Hévin, N.M.C., Hansen, S., Addison, P., Benoit, L., Kergoat, G.J. & Haran, J. (2022) Late Cenozoic environmental changes drove the diversification of a weevil genus endemic to the Cape Floristic Region. *Zoologica Scripta*, 51, 724–740.
- Kaloveloni, A., Tscheulin, T. & Petanidou, T. (2018) Geography, climate, ecology: what is more important in determining bee diversity in the Aegean Archipelago? *Journal of Biogeography*, 45, 2690–2700.
- Kearns, C.A. & Inouye, D.W. (1997) Pollinators, flowering plants, and conservation biology. *Bioscience*, 47, 297–307.
- Klein, A.M., Vaissière, B.E., Cane, J.H., Steffan-Dewenter, I., Cunningham, S.A., Kremen, C. et al. (2007) Importance of pollinators in changing landscapes for world crops. *Proceedings of the Royal Society B: Biological Sciences*, 274, 303–313.
- Kougioumoutzis, K., Kaloveloni, A. & Petanidou, T. (2022) Assessing climate change impacts on Island bees: the Aegean Archipelago. *Biology*, 11, 552.
- Kreft, H. & Jetz, W. (2007) Global patterns and determinants of vascular plant diversity. *Proceedings of the National Academy of Sciences of the United States of America*, 104, 5925–5930.
- Kuhlmann, M. (2009) Patterns of diversity, endemism and distribution of bees (Insecta: Hymenoptera: Anthophila) in southern Africa. *South African Journal of Botany*, 75, 726–738.
- Kuhlmann, M., Guo, D., Veldtman, R. & Donaldson, J. (2012) Consequences of warming up a hotspot: species range shifts within a centre of bee diversity. *Diversity and Distributions*, 18, 885–897.

- Leclercq, N., Marshall, L., Caruso, G., Schiel, K., Weekers, T., Carvalho, L.G. et al. (2023) European bee diversity: taxonomic and phylogenetic patterns. *Journal of Biogeography*, 50, 1244–1256.
- Litman, J.R., Danforth, B.N., Eardley, C.D. & Praz, C.J. (2011) Why do leaf-cutter bees cut leaves? Bew insights into the early evolution of bees. *Proceedings of the Royal Society B: Biological Sciences*, 278, 3593–3600.
- Manning, J.C. & Goldblatt, P. (2012) *Plants of The Greater Cape Floristic Region 1: the Core Cape Flora*. Strelitzia, Vol. 29. Pretoria: SANBI.
- Marshall, L., Ascher, J.S., Villagra, C., Beaugendre, A., Herrera, V., Henríquez-Piskulich, P. et al. (2023) Chilean bee diversity: contrasting patterns of species and phylogenetic turnover along a large-scale ecological gradient. *Ecosphere*, 14, e4535.
- Mecenero, S., Altwegg, R., Colville, J.F. & Beale, C.M. (2015) Roles of spatial scale and rarity on the relationship between butterfly species richness and human density in South Africa. *PLoS One*, 10, e0124327.
- Mecenero, S., Ball, J.B., Edge, D.A., Hamer, M.L., Henning, G.A., Kruger, M. et al. (2013) In: Terblanche, R.F. & Williams, M.C. (Eds.) *Conservation assessment of butterflies of South Africa*. Lesotho and Swaziland: Red List and Atlas. Safronics (Pty) Ltd., Johannesburg & Animal Demography Unit, Cape Town.
- Meiners, J.M., Griswold, T.L. & Messinger Carril, O. (2019) Decades of native bee biodiversity surveys at Pinnacles National Park highlight the importance of monitoring natural areas over time. *PLoS One*, 14, e0207566.
- Melin, A. & Colville, J.F. (2019) A review of 250 years of South African bee taxonomy and exploration (Hymenoptera: Apoidea: Anthophila). *Transactions of the Royal Society of South Africa*, 74, 86–96.
- Messinger Carril, O., Griswold, T.L., Haefner, J. & Wilson, J.S. (2018) Wild bees of Grand Staircase-Escalante National Monument: richness, abundance, and spatio-temporal beta-diversity. *PeerJ*, 2018, e5867.
- Michener, C.D. (1979) Biogeography of the bees. *Annals of the Missouri Botanical Garden*, 66, 277–347.
- Michener, C.D. (2007) *The bees of the world*, 2nd edition. Baltimore, MD: Johns Hopkins Press.
- Michez, D., Patiny, S. & Danforth, B.N. (2009) Phylogeny of the bee family Melittidae (Hymenoptera: Anthophila) based on combined molecular and morphological data. *Systematic Entomology*, 34, 574–597.
- Michez, D., Patiny, S., Rasmont, P., Timmermann, K. & Vereecken, N.J. (2008) Phylogeny and host-plant evolution in Melittidae s.l. (Hymenoptera: Apoidea). *Apidologie*, 39, 146–162.
- Minckley, R.L. & Radke, W.R. (2021) Extreme species density of bees (Apiformes, Hymenoptera) in the warm deserts of North America. *Journal of Hymenoptera Research*, 82, 317–345.
- Mittermeier, R.A., Myers, N., Tliomsen, J.B. & Olivieri, S. (1998) Biodiversity hotspots and major tropical wilderness areas: approaches to setting conservation priorities. *Conservation Biology*, 12, 516–520.
- Mucina, L. & Rutherford, M.C. (2006) *The vegetation of South Africa*. Strelitzia, Vol. 19. Lesotho and Swaziland: South African National Biodiversity Institute, Pretoria.
- Myers, N., Mittermeier, R.A., Mittermeier, C.G., Fonseca, G.A.B. & Kent, J. (2000) Biodiversity hotspots for conservation priorities. *Nature*, 403, 853–858.
- Neff, J.L. & Simpson, B.B. (1993) Bees, pollination systems and plant diversity. In: la Salle, J. & Gauld, I.D. (Eds.) *Hymenoptera and biodiversity*. Wallington: CAB International, pp. 143–167.
- Ollerton, J., Winfree, R. & Tarrant, S. (2011) How many flowering plants are pollinated by animals? *Oikos*, 120, 321–326.
- Orr, M.C., Hughes, A.C., Chesters, D., Pickering, J., Zhu, C.-D. & Ascher, J.S. (2021) Global patterns and drivers of bee distribution. *Current Biology*, 31, 451–458. <https://doi.org/10.1016/j.cub.2020.10.053>
- Otte, D. (2020) Thirty-two new south African grasshopper species in the family Lentulidae belonging to eleven genera (Orthoptera: Acridoidea). *Transactions of the American Entomological Society*, 146, 1–164.
- Patiny, S. & Michez, D. (2007) Biogeography of bees (Hymenoptera, Apoidea) in Sahara and the Arabian deserts. *Insect Systematics and Evolution*, 38, 19–34.
- Pearce, J.L. & Boyce, M.S. (2006) Modelling distribution and abundance with presence-only data. *Journal of Applied Ecology*, 43, 405–412.
- Perera, S.J., Ratnayake-Perera, D. & Procheş, Ş. (2011) Vertebrate distributions indicate a greater Maputaland-Pondoland-Albany region of endemism. *South African Journal of Science*, 107, 1–15.
- Potts, A.J., Hedderson, T.A., Franklin, J. & Cowling, R.M. (2013) The last glacial maximum distribution of South African subtropical thicket inferred from community distribution modelling. *Journal of Biogeography*, 40, 310–322.
- Predel, R., Neupert, S., Huetteroth, W., Kahnt, J., Waidelich, D. & Roth, S. (2012) Peptidomics-based phylogeny and biogeography of Manto-phasmatodea (Hexapoda). *Systematic Biology*, 61, 609–629.
- Procheş, Ş. & Cowling, R.M. (2006) Insect diversity in Cape Fynbos and neighbouring South African vegetation. *Global Ecology and Biogeography*, 15, 445–451.
- Procheş, Ş. & Cowling, R.M. (2007) Do insect distributions fit our biomes? *South African Journal of Science*, 103, 258–261.
- Procheş, Ş., Forest, F., Veldtman, R., Chown, S.L., Cowling, R.M., Johnson, S.D. et al. (2009) Dissecting the plant-insect diversity relationship in the Cape. *Molecular Phylogenetics and Evolution*, 51, 94–99.
- QGIS Development Team. (2023) QGIS Geographic Information System. Open Source Geospatial Foundation Project. (Version 2.18.14). Available from: <https://qgis.org>
- R Core Team. (2021) *R: a language and environment for statistical computing*. Vienna, Austria: R Foundation for Statistical Computing. Available from: <https://www.R-project.org/>
- Ricklefs, R.E. (2004) A comprehensive framework for global patterns in biodiversity. *Ecology Letters*, 7, 1–15.
- Robertson, M.P., Visser, V. & Hui, C. (2016) Biogeo: an R package for assessing and improving data quality of occurrence record datasets. *Ecography*, 39, 394–401.
- Rosenzweig, M.L. (1995) *Species diversity in space and time*. Cambridge University Press, Cambridge, United Kingdom.
- Scholtz, C.H. & Chown, S.L. (1995) Insects in southern Africa: how many species are there? *South African Journal of Science*, 91, 124–126.
- Schulze, R.E. (2007) *South African atlas of climatology and agrohydrology*. Water Research Commission, Pretoria, RSA, WRC Report 1489/1/06. Pretoria.
- Schwarz, M.P., Bull, N.J. & Cooper, S.J.B. (2003) Molecular phylogenetics of Allodapine bees, with implications for the evolution of sociality and progressive rearing. *Systematic Biology*, 52, 1–14.
- Skowno, A.L., Poole, C.J., Raimondo, D.C., Sink, K.J., van Venter, H. & van Niekerk, L. (2018) *National Biodiversity Assessment 2018: the status of South Africa's ecosystems and biodiversity—synthesis report*. Pretoria: SANBI.
- Soroye, P., Newbold, T. & Kerr, J.T. (2020) Climate change contributes to widespread declines among bumble bees across continents. *Science*, 367, 685–688.
- Steiner, K.E. & Whitehead, V.B. (1990) Pollinator adaptation to oil-secreting flowers—*Rediviva* and *Diascia*. *Evolution*, 44, 1701.
- Stuckenberg, B.R. (1969) Effective temperature as an ecological factor in southern Africa. *Zoologica Africana*, 4, 145–197.
- van Wyk, A.E. & Smith, G.F. (2001) *Regions of floristic endemism in southern Africa. A review with emphasis on succulents*. Pretoria: Umdaus Press.
- Whitehead, V.B. & Steiner, K.E. (1993) A new *Rediviva* bee (Hymenoptera: Apoidea: Melittidae) that collects oil from orchids. *African Entomology*, 1, 159–166.

- Wickham, H. (2009) *ggplot2: elegant graphics for data analysis*. Springer-Verlag New York.
- Wiens, J.J. (2011) The causes of species richness patterns across space, time, and clades and the role of “Ecological Limits”. *The Quarterly Review of Biology*, 86, 75–96.
- Williams, P.H. (1998) An annotated checklist of bumble bees with an analysis of patterns of description (Hymenoptera: Apidae, Bombini). *Bulletin of the Natural History Museum Entomology Series*, 67, 79–152.
- Wright, M.G. & Samways, M.J. (1998) Insect species richness tracking plant species richness in a diverse flora: gall-insects in the Cape Floristic Region, South Africa. *Oecologia*, 115, 427–433.
- Zattara, E.E. & Aizen, M.A. (2021) Worldwide occurrence records suggest a global decline in bee species richness. *One Earth*, 4, 114–123.

## SUPPORTING INFORMATION

Additional supporting information can be found online in the Supporting Information section at the end of this article.

**Data S1.** Supporting Information.

**How to cite this article:** Melin, A., Beale, C.M., Manning, J.C. & Colville, J.F. (2024) Fine-scale bee species distribution models: Hotspots of richness and endemism in South Africa with species-area comparisons. *Insect Conservation and Diversity*, 1–14. Available from: <https://doi.org/10.1111/icad.12715>