



UNIVERSITY OF LEEDS

This is a repository copy of *Using an intersectionality approach to explore the makings of health in island contexts: a case study of The Bahamas*.

White Rose Research Online URL for this paper:

<https://eprints.whiterose.ac.uk/209540/>

Version: Presentation

Conference or Workshop Item:

Poitier, F. orcid.org/0000-0003-2163-4750 Using an intersectionality approach to explore the makings of health in island contexts: a case study of The Bahamas. In: The Horizons Institute's Decolonising Research Methods Showcase, 22 Feb 2024, Leeds, UK. (Unpublished)

This is an author produced version of a conference presentation originally presented at The Horizons Institute's Decolonising Research Methods Showcase, Leeds, UK, 22 February 2024.

Reuse

Items deposited in White Rose Research Online are protected by copyright, with all rights reserved unless indicated otherwise. They may be downloaded and/or printed for private study, or other acts as permitted by national copyright laws. The publisher or other rights holders may allow further reproduction and re-use of the full text version. This is indicated by the licence information on the White Rose Research Online record for the item.

Takedown

If you consider content in White Rose Research Online to be in breach of UK law, please notify us by emailing eprints@whiterose.ac.uk including the URL of the record and the reason for the withdrawal request.



eprints@whiterose.ac.uk
<https://eprints.whiterose.ac.uk/>



Using an intersectionality approach to explore the makings of health in island contexts

A case study of The Bahamas

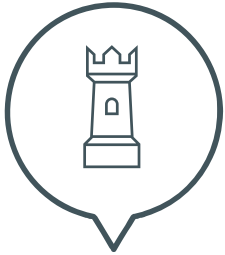
Dr Francis K. Poitier

@FrancisPoitier
francispoitier.com

Nuffield Centre for International Health and Development
University of Leeds

Reflection of intersectional methods in practice

Based on case study of exploring prevalence of obesity in The Bahamas



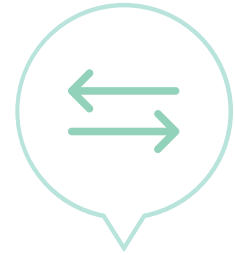
The Ivory Tower

Interrogating
knowledge-making
as an institution of
power



Participant Rapport

Appreciating
power and
self-definition

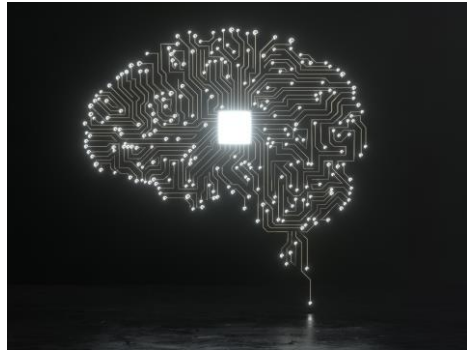


Flexibility

Being open to
the unexpected



Knowledge making and sharing imbued with (colonial) power



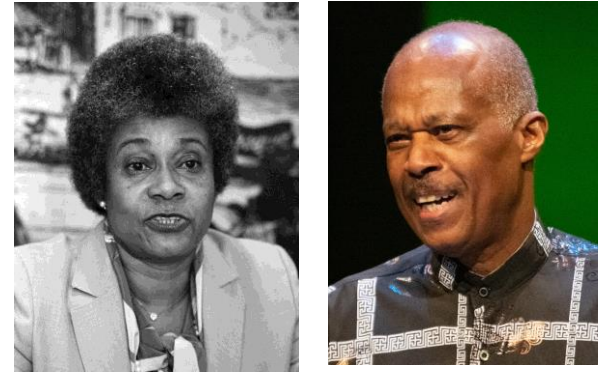
North American and Eurocentric experiences and scholarship dominate academic thought

Concept of intersectionality popularised in early 1990s



Kimberlé Crenshaw

Intersectional thinking has been around long before then



Early works of Caribbean scholars in 1970s and 1980s 'disrupted' womanhood in colonial Caribbean

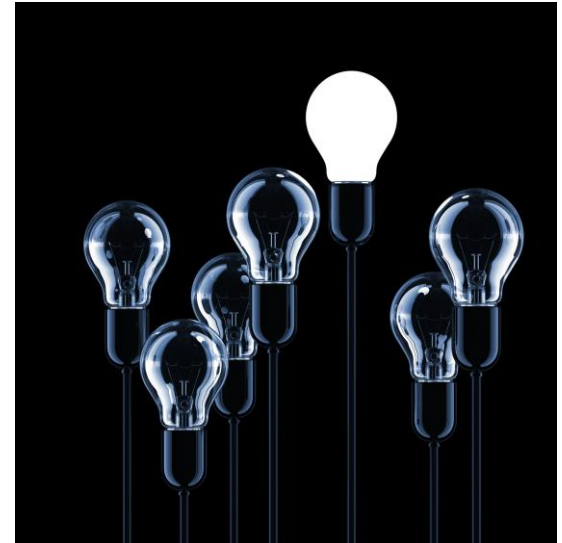


Intersectionality appreciates individuality



Conceptually: There are various intersections of importance
Practically: Should this be pre-determined?

Power of self-definition

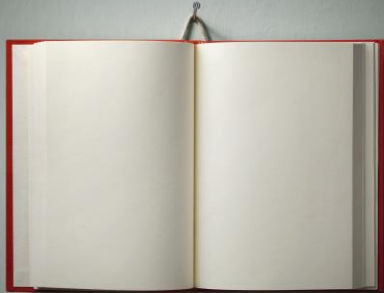


**Participant-led, trust-building,
rapport**



Flexibility in research approach and analyses

Being open to the unexpected



Obesity \neq health

Body size, food behaviour linked to the crafting of a Black Bahamian national identity

Conclusion: intersectionality and decolonisation

Intentional about highlighting individuality and disrupting structures of power



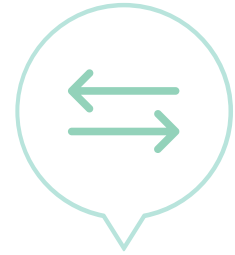
The Ivory Tower

**Question
knowledge-making**



Participant Rapport

**Empowering
participants**



Flexibility

**Open to
indigenous
knowledge**