



This is a repository copy of *Large-scale evaluation of outcomes following a genetic diagnosis in children with severe developmental disorders*.

White Rose Research Online URL for this paper:

<https://eprints.whiterose.ac.uk/208872/>

Version: Submitted Version

Preprint:

Copeland, H., Low, K.J., Wynn, S. et al. (89 more authors) (Submitted: 2023) Large-scale evaluation of outcomes following a genetic diagnosis in children with severe developmental disorders. [Preprint - medRxiv] (Submitted)

<https://doi.org/10.1101/2023.10.18.23297202>

© 2023 The Author(s). This preprint is made available under a Creative Commons Attribution 4.0 International License. (<https://creativecommons.org/licenses/by/4.0/>)

Reuse

This article is distributed under the terms of the Creative Commons Attribution (CC BY) licence. This licence allows you to distribute, remix, tweak, and build upon the work, even commercially, as long as you credit the authors for the original work. More information and the full terms of the licence here:

<https://creativecommons.org/licenses/>

Takedown

If you consider content in White Rose Research Online to be in breach of UK law, please notify us by emailing eprints@whiterose.ac.uk including the URL of the record and the reason for the withdrawal request.



eprints@whiterose.ac.uk
<https://eprints.whiterose.ac.uk/>

TITLE

Large-scale evaluation of outcomes following a genetic diagnosis in children with severe developmental disorders

AUTHORS

Harriet Copeland* 1, Karen J Low* 2, Sarah Wynn 3, Ayesha Ahmed 4, Victoria Arthur 5, Meena Balasubramanian 6, Katya Bennett 7, Jonathan Berg 8, Marta Bertoli 9, Lisa Bryson 10, Catrin Bucknall 4, Jamie Campbell 11, Kate Chandler 5, Jaynee Chauhan 12, Amy Clarkson 9, Rachel Coles 13, Hector Conti 4, Philandra Costello 14, Tessa Coupar 8, Amy Craig 15, John Dean 11, Amy Dillon 5, Abhijit Dixit 16, Kathryn Drew 17, Jacqueline Eason 16, Francesca Forzano 18, Nicky Foulds 14, Alice Gardham 13, Neeti Ghali 13, Andrew Green 19, William Hanna 20, Rachel Harrison 16, Mairead Hegarty 20, Jenny Higgs 7, Muriel Holder 18, Rachel Irving 4, Vani Jain 4, Katie Johnson 16, Rachel Jolley 17, Wendy Jones 21, Gabriela Jones 16, Shelagh Joss 10, Ruta Kalinauskiene 18, Farah Kanini 6, Karl Kavanagh 19, Mahmudur Khan 13, Naz Khan 5, Emma Kivuva 1, Nayana Lahiri 15, Neeta Lakhani 22, Anne Lampe 23, Sally Ann Lynch 19, Sahar Mansour 15, Alice Marsden 7, Hannah Massey 11, Shane McKee 20, Shehla Mohammed 18, Swati Naik 17, Mithushanaa Nesarajah 5, Ruth Newbury-Ecob 2, Fiona Osborne 23, Michael J Parker 6, Jenny Patterson 10, Caroline Pottinger 4, Matina Prapa 24, Katrina Prescott 12, Shauna Quinn 19, Jessica A Radley 13, Sarah Robart 21, Alison Ross 11, Giulia Rosti 18, Francis Sansbury 4, Ajoy Sarkar 16, Claire Searle 16, Nora Shannon 16, Debbie Shears 25, Sarah Smithson 2, Helen Stewart 25, Mohnish Suri 16, Shereen Tadros 21, Rachel Theobald 9, Rhian Thomas 15, Olga Tsoulaki 6, Pradeep Vasudevan 22, Maribel Verdesoto 4, Emma Vittery 9, Sinead Whyte 21, Emily Woods 6, Thomas Wright 5, David Zocche 25, Helen V Firth 24, and Caroline F Wright** 26 on behalf of the DDD Study

NOTE: This preprint reports new research that has not been certified by peer review and should not be used to guide clinical practice.

* These authors contributed equally

** Correspondence: caroline.wright@exeter.ac.uk

AFFILIATIONS

1 Peninsula Clinical Genetics, Clinical Genetics, Royal Devon University Healthcare NHS Foundation Trust, Gladstone Road, Exeter, EX1 2ED

2 Bristol Regional Clinical Genetics Service, Level B, St Michael's Hospital, Southwell Street, Bristol BS2 8EG

3 Unique, The Stables, Station Road West, Oxted, Surrey RH8 9EE

4 All Wales Genomics Laboratory, Institute of Medical Genetics, University Hospital of Wales, Heath Park, Cardiff CF14 4XW

5 Manchester Centre for Genomic Medicine, Manchester Centre for Genomic Medicine, 6th Floor, St Mary's Hospital, Oxford Road, Manchester M13 9WL

6 Sheffield Clinical Genetics Services, Sheffield Children's NHS Foundation Trust, Northern General NHS Trust, Herries Road, Sheffield S5 7AU

7 Liverpool Centre for Genomic Medicine, Liverpool Women's Hospital, Crown Street, Liverpool L8 7SS

8 Clinical Genetics, Human Genetics Unit, Level 6, Ninewells Hospital, Dundee DD1 9SY

9 Northern Genetics Service, The Newcastle upon Tyne Hospitals NHS Foundation Trust, Institute of Genetic Medicine, International Centre for Life, Central Parkway, Newcastle upon Tyne NE1 3BZ

10 West of Scotland Centre for Genomic Medicine, Laboratory Medicine Building, Queen Elizabeth University Hospital, 1345 Govan Road, , Glasgow G51 4TF

11 North of Scotland Regional Genetics Service, Clinical Genetics Centre, Ashgrove House, Aberdeen Royal Infirmary, Foresterhill, Aberdeen AB25 2ZA

- 12 Yorkshire Regional Genetics Service, Chapel Allerton Hospital, Chapeltown Road, Leeds LS74SA
- 13 North West Thames Regional Genetics Service, London North West University Healthcare NHS Trust, Northwick Park Hospital, Watford Road, Harrow HA1 3UJ
- 14 Wessex Clinical Genetics Service, G level, Mailpoint 105, Princess Anne Hospital, Coxford Road, Southampton SO16 5YA
- 15 SW Thames Centre for Genomics, St. George's University Hospital, Blackshaw Road, Tooting, London SW17 0QT
- 16 Nottingham Regional Genetics Service, Nottingham City Hospital Campus, The Gables, Gate 3, Hucknall Road, Nottingham NG5 1PB
- 17 West Midlands Regional Genetics Service, Department of Clinical Genetics, Birmingham Women's Hospital, Mindelsohn Way, Edgbaston B15 2TG
- 18 Department of Clinical genetics, 7th Floor Borough Wing, Guys Hospital, Great Maze Pond, London SE1 9RT
- 19 Department of Clinical Genetics, Children's Health Ireland, Crumlin, D12 N512, Ireland
- 20 Northern Ireland Regional Genetics Service, Medical Genetics Department, A floor, Belfast City Hospital, Belfast BT9 7AB
- 21 London – North East Thames Regional Genetics Service, Clinical Genetics Unit, Great Ormond Street Hospital NHS Trust, Great Ormond Street, London WC1N 3JH
- 22 Leicestershire, Northamptonshire and Rutland Genomic Medicine Service, Leicester Royal Infirmary, University Hospitals of Leicester NHS Trust, Leicester LE1 5WW
- 23 South East Scotland Clinical Genetics Service, Western General Hospital, Crewe Road South, Edinburgh EH4 2XU
- 24 East Anglian Medical Genetics Service, Clinical Genetics, Box 134, Addenbrooke's Treatment Centre, Level 6, Addenbrooke's Hospital, Hills Road, Cambridge CB2 0QQ

25 Oxford Centre for Genomic Medicine, Department of Clinical Genetics, Churchill
Hospital, Headington, Oxford OX3 7LE

26 Department of Clinical and Biomedical Sciences, Medical School, University of Exeter,
St Luke's Campus, Magdalen Road, Exeter EX1 2LU

ABSTRACT

Objective: We sought to evaluate outcomes for clinical management following a genetic diagnosis from the Deciphering Developmental Disorders (DDD) Study.

Design: Individuals in the DDD study who had a pathogenic/likely pathogenic genotype in the DECIPHER database were selected for inclusion (n=5010). Clinical notes from regional clinical genetics services notes were reviewed to assess pre-defined clinical outcomes relating to interventions, prenatal choices, and information provision.

Results: Outcomes were recorded for 4237 diagnosed probands (85% of those eligible) from all 24 recruiting centres across the UK and Ireland. Additional diagnostic or screening tests were performed in 903 (21%) probands through referral to a range of different clinical specialties, and stopped or avoided in a further 26 (0.6%). Disease-specific treatment was started in 85 (2%) probands, including seizure-control medications and dietary supplements, and contra-indicated medications were stopped/avoided as no longer necessary in a further 20 (0.5%). The option of prenatal/preimplantation genetic testing was discussed with 1204 (28%) families, despite the relatively advanced age of the parents at the time of diagnosis. Importantly, condition-specific information or literature was given to 3214 (76%) families, and 880 (21%) were involved in family support groups. In the most common condition (KBS syndrome; 79 (2%) probands), clinical interventions only partially reflected the temporal development of phenotypes, highlighting the importance of consensus management guidelines and patient support groups.

Conclusions: Our results underscore the importance of achieving a clinico-molecular diagnosis to ensure timely onward referral of patients, enabling appropriate care and anticipatory surveillance, and for accessing relevant patient support groups.

INTRODUCTION

Despite widespread use of genomic testing in children with developmental disorders (DD), relatively little has been documented about the outcomes following a genetic diagnosis in this group of patients[1]. Steady advances in genomic technologies, including DNA microarray analysis and exome/genome sequencing, have resulted in the identification of a monogenic cause in around half of individuals affected with a presumed genetic DD[2–4]. The value of a diagnosis to the family has been well documented (<https://www.undiagnosed.org.uk/support-information/what-does-getting-a-genetic-diagnosis-mean/>), including genetic counselling, accessing patient support groups and reproductive planning[5]. However, the value for clinical management has been less clearly documented, and it has sometimes been assumed that in many cases nothing different can be done to manage the affected child[6], rendering a precise molecular diagnosis an additional detail rather than a pivotal point in the ongoing management of the child and their family.

We sought to investigate outcomes in families affected by severe DD where a genetic diagnosis was made through the Deciphering Developmental Disorders (DDD) Study. By including data from across the whole of the UK and Republic of Ireland, we were able to systematically analyse interventions in >4,200 diagnosed probands and evaluate management of individuals affected by the same syndromes.

METHODS

Eligibility: Probands with severe previously undiagnosed developmental disorders were recruited into the DDD study and analysed using microarrays and exome sequencing, as described previously[7–9]. Probands were selected for follow-up to investigate outcomes if they had received a likely diagnosis from the DDD study reported to referring clinical geneticists via DECIPHER[10] as of 8 March 2021 (n=5010), herein defined as a clinician-annotated pathogenic/likely pathogenic genotype[4], or *de novo* mutation or biallelic loss-of-function variant in a DDG2P gene[11].

Data collection: Parental ages, quantitative growth data and Human Phenotype Ontology (HPO) terms were prospectively collected on all probands in the DDD study[12]. A clinical outcomes questionnaire was subsequently designed based on a pilot study[1], including questions relating to treatment, testing/screening, reproductive choice, information provision and adverse outcomes relating to receiving a diagnosis (**Table 1**). In addition to single response questions, information was collected in free-text format on medical interventions (treatments and testing/screening) and adverse outcomes. The questionnaire was codified into a standardised *pro forma* and circulated to each Regional Genetics Service to complete for their diagnosed DDD families using clinical notes from regional clinical genetics services , including a pseudonymized DECIPHER ID linked to the diagnosis for each proband. Data were collated from March 2021 – July 2022. Variants were confirmed in an NHS diagnostic laboratory where appropriate.

RESULTS

Overview of cohort

Outcomes data were recorded on 4,237 diagnosed DDD probands (47% female) by 24 Regional Genetics Services across the UK and Republic of Ireland (range = 42-316 per centre, **Figure 1**). Diagnoses included both small single-gene variants and large multigenic structural variants, with inheritance patterns[4] including autosomal dominant (68% *de novo*, 7% inherited from an affected parent, 8% with unknown inheritance), autosomal recessive (11%), X-linked (5%), as well as multiple diagnoses with different inheritance classes (1%). The average time from recruitment to result was 3.8 years (range: 1.1-9.4 years), at which point probands were an average of 12 years old (range: 1.8-55 years) and parents were an average of 44 years old (range: 20-90 years; **Figure 2**).

Management of proband

An overview of the clinical outcomes that occurred following a diagnosis in 4,237 DDD families are summarised in **Table 1** and **Figure 3**. Importantly, clinical management of the affected individual changed in 24% of diagnosed DDD probands as a result of receiving a genetic diagnosis, which ranged from 5-51% across the different regional genetics services (**Figure 1**). This range partly reflects differences in workforce capacity across different centres. Treatment was altered in 143 probands (3%), which included starting, reviewing, stopping, or avoiding specific therapies. Recurrently prescribed medications included drugs to control seizures (e.g. carbamazepine, clonazepam, lamotrigine, topiramate) and specific dietary supplements (e.g. folate, creatinine, carnitine, ornithine). Interventions include probands who accessed prophylactic treatment to reduce the risk of condition specific complications (e.g. retinal detachment in Stickler syndrome). Further medical investigations were performed in 937 probands (22%) through referral to a wide range of non-genetics specialists for further clinical input to manage associated phenotypes, including screening and/or non-genetic diagnostic testing (**Figure 3**). The largest number of referrals were made to cardiology (28%), followed by

nephrology (13%), ophthalmology (11%), radiology (10%), neurology/paediatric neurology (7%), endocrinology (7%), primary care (4%), condition-specific or specialist metabolic clinics (4%), audiology (3%), dentistry (2%), dermatology (2%) and orthopaedics (1%) as well as Ear Nose and Throat (ENT), respiratory, general paediatrics, psychiatry/clinical psychology and urology (all <1%). A third of referred probands were referred for multiple different investigations or to multiple non-genetics specialists to manage different aspects of their phenotype, highlighting the complexity of genetic DD syndromes. Free-text information gathered also indicated that additional phenotypic features were detected and managed in many probands following these referrals, reflecting the value of timely diagnosis and referral for identifying complications and providing appropriate multi-disciplinary care. In 418 probands (10%), it was reported that some interventions (such as MRI scans and muscle biopsies) could have been avoided if the diagnosis had been made earlier.

Management of family

In addition to medical management of the affected proband, we also investigated wider clinical management of the family following their diagnosis. Condition-specific information or support was provided to 3214 families (76%), including scientific literature and/or patient information leaflets. Remarkably, 772 (18%) of families had been included in condition-specific scientific publications, which likely reflects the rarity and recent discovery of many of the disease-associated genes. At the time of data collection, prenatal diagnosis or preimplantation genetic testing (PND/PGT) had been discussed with 1222 families (29%) and performed in 103 (2%). It is likely these proportions would have been higher had parents been younger at the point of receiving the diagnosis (**Figure 2**), and only 235 (6%) of parents had a confirmed pregnancy since receiving their child's genetic diagnosis. Finally, reflecting the fact that receiving a diagnosis does not always provide welcome news, a diagnosis-related adverse

outcome was reported in 20 families (0.5%), in whom parental or patient anxiety resulted in additional clinic appointments. Reasons given for anxieties related to a range of issues, including the possibility of phenotype progression (based on other individuals affected with the same condition), the prospect of additional interventions, the lack of diagnosis-specific information, potential risks to other family members, and changes to a previous diagnostic result (either a previous missed or mis-diagnosis[13]).

Data aggregation to build knowledge

We further sought to compare phenotypes and outcomes between probands of different ages diagnosed with the same condition. In our dataset, 37 genes had diagnostic variants in ≥ 20 probands, together accounting for 1218 (29%) of diagnoses[4]. Of these, we focused on three well-established exemplar genes: *ANKRD11* (KBG syndrome; n=79)[14], which has the largest number of DDD diagnoses; *CTNNA1* (neurodevelopmental disorder with spastic diplegia and visual defects, NEDSDV; n=30)[15], in which there is a clinical imperative for ophthalmic surveillance; and *MSD1* (Sotos syndrome; n=20)[16], in which the highest proportion of DDD probands (65%) had medical interventions following a diagnosis. Using HPO terms and quantitative phenotypes grouped by age and system, we created a quasi-natural history for the conditions and overlaid information about when and how often particular interventions occurred (**Figure 4**).

For *ANKRD11*, the phenotype heatmap (**Figure 4a**) demonstrates a multi-system disorder with variable expression. Short stature and neurodevelopmental features are strongly consistent throughout the age range but there is an age-dependent emergence to other features such as dental and audiologic phenotypes. The spread of other phenotypes is consistent with the body of literature already available in KBG Syndrome, but demonstrates a highly visual quasi-natural

history, useful for both parents and clinicians alike when determining management plans at a point in time. Interventions in *ANKRD11* patients demonstrated large-scale variability across the group, which is likely associated with the timing of the emergence of published clinical recommendations[17]. In contrast, the heatmap for *CTNNB1* (**Figure 4b**) illustrates a more tightly defined range of phenotypic features, demonstrating a severe early onset neurodevelopmental disorder with postnatal onset microcephaly. Interestingly, we did not observe a consistent pattern of ophthalmology referrals amongst these patients, despite a 40% risk of retinal detachment requiring regular eye surveillance to prevent total blindness[18]. This observation is potentially due to variability in data collection for onward referral and the severity of the phenotype precluding referral, but suggests an opportunity to alert clinicians to the need for ophthalmology referral in these patients. By comparison, the well-documented recommendations for baseline investigations and referrals were evident in our data for in *NSD1* (**Figure 4c**), as was the established evolution of the phenotype with age[19]. Interestingly, although patterns of phenotype progression are apparent with increasing age, all three conditions show a degree of variable expressivity, with only a few phenotypes universally present. Clinical interventions across all three conditions appear to be somewhat sporadic, and only partially reflect the temporal development of phenotypes, suggesting that systematic improvements could be made to referral practices to ensure equity of access to the most appropriate care.

Benefits of support groups

Finally, we found that 880 (20.8%) of diagnosed DDD families were involved in patient support groups. In addition to umbrella patient organisations supporting families with genetic conditions and pre-existing condition-specific organisations, numerous new condition-specific patient support groups were created as a direct result of disease-gene discovery in the DDD

Study. These groups range from small parent-led social media (e.g. Facebook) groups that bring patients and families together to share experiences, to the development of registered charities and foundations. We also note that, over the course of the study, DDD clinical collaborators have contributed to authoring >40 single gene patient information leaflets in collaboration with Unique (<https://rarechromo.org/disorder-guides/>).

DISCUSSION

We have retrospectively recorded and analysed outcomes following a genetic diagnosis in 4237 families in the DDD study. We have shown that around a quarter of individuals affected by a severe DD received a change in medical management following their genetic diagnosis, primarily through a range of referrals to non-genetics specialties for additional testing and surveillance. The clinical impact of a precise molecular diagnosis on the management pathway for an individual patient thus enables a precision medicine approach and the provision of appropriate care, sometimes preventing particular phenotypes from developing. The likely increased demand for specialist assessments following a genetic diagnosis also needs to be costed and provided. Additionally, at least three-quarters of families were given condition-specific information, which supports understanding and family adaption to a genetic diagnosis. Very few adverse outcomes were reported, suggesting that the anxiety and other mental health implications associated with receiving genetic results from a large genomics research study delivered via an expert clinical service were generally low.

We have also presented a novel approach to creating a quasi-natural history of specific genetic conditions, using data from multiple affected probands of different ages. The richness of phenotype data in KBG syndrome in particular shows the variable expressivity of this highly

penetrant condition, and highlights when and how likely particular phenotypes are to manifest. However, the link between the emergence of clinical phenotypes and the necessary clinical interventions is weak, and may vary both within a condition and between services. We hope that these representations of phenotypes and intervention data with age will provide better prognostic information to clinicians and patients, and catalyse the development of consensus management guidelines. In addition, the growing size and number of disorder-specific family support groups should be recognised and welcomed by both the clinical and patient communities, and may provide a mechanism by which referral and clinical management practices could be compared and optimised. Support groups play a vital role in the provision of information and act as a forum for patients and families to share experiences and seek advice from people in a similar situation[20]. Parents and carers of children with DD are at risk of social isolation and emotional distress, which can be exacerbated when the condition is rare[21,22]. Many participants of support groups report positive outcomes, such as reduced isolation and anxiety, improvements in coping skills and increased self-esteem and empowerment[23]. Internet-based support groups also mean that geographical location is no barrier to accessing support and making connections with others[24]. Ultimately, bringing together patients, clinicians and researchers with a common focus on a specific condition can stimulate research, enabling co-development of research questions and providing a vehicle for both recruitment and dissemination of findings.

This large-scale, nation-wide study was made possible through an extensive network of regional clinical collaborators across the National Health Service and Health System in the UK and Ireland. However, there are significant challenges to gathering comparable data on thousands of families under the care of hundreds of clinicians spread across 24 different sites. Due to the large size and geographical spread of the study, we did not attempt to gather

information directly from parents or probands relating to social, educational or other non-clinical outcomes, though there is little doubt that receiving a formal diagnosis can be of immense value to families. Provision of social, financial and educational support should be based on an individual's need, but families often report that a diagnostic label can be extremely helpful when advocating for their child's needs[1,25,26]. Within each clinic, individual data collectors were limited to information available in their local genetics notes, where the level of detail routinely recorded can vary substantially – exacerbated by the move from paper towards electronic health records – hampering our ability to compare findings between services. Moreover, the size and expertise of data collection teams varied across the sites, potentially resulting in different ways of reporting similar outcomes. There may also be differences between clinicians and regions in referral practices (e.g. refer versus test onsite) as well as the timing and purpose of testing (e.g. diagnostic versus screening, etc).

We were also limited by the retrospective collection of outcomes data, recorded at a single point in time but relating to diagnoses returned over the course of a 7-year period. This approach cannot account for the development of clinical guidelines and dissemination of best practice over time. This issue is exemplified by KBG Syndrome, for which clinical management recommendations were published in 2016, after most *ANKRD11* diagnoses were returned in DDD[17]. Similarly, we were limited by the prospective collection of phenotypes at recruitment, which does not take account of phenotypic progression. It was not always possible to determine whether a particular clinical action resulted directly from the genetic diagnosis or from the appearance of a phenotype. Our results are skewed both by the high proportion of diagnostic *de novo* variants and the relatively advanced age of parents at the point of receiving a diagnosis, which may have reduced the appropriateness of reproductive counselling and limited parental opportunity for further testing. Finally, even within our large

dataset, due to the rareness of individual conditions, there were relatively small numbers of probands with the same conditions, which reduced our ability to create accurate quasi-natural histories across different age groups. Ideally, longitudinal phenotype collection on individuals would enable true natural histories to be collected and compared, and the aggregation of data on larger numbers of patients through databases such as DECIPHER will enable these data to be systematically analysed and widely shared.

In conclusion, we have demonstrated that it is both possible and useful to collect outcomes data from clinical genetics services on the impact of receiving a genetic diagnosis. Making an accurate genetic diagnosis is often crucial for directing clinical management of affected individuals and providing advice regarding risks to other family members including reproductive advice. Although molecularly-targeted treatments for monogenic DDs are still limited, more will no doubt become available as new technologies develop. Our findings highlight the importance of onwards referral to ensure the best care for patients and families affected by rare diseases, and also underscore the value of developing best practice guidelines to ensure equity of access to appropriate clinical interventions.

ACKNOWLEDGEMENTS

We thank Professors Michael Parker and Matthew Hurles for their ongoing involvement and leadership of the DDD study. The authors are deeply indebted to the patients and families involved in the DDD study, as well as the UK NHS and Irish HSE genetics services. The DDD study presents independent research commissioned by the Health Innovation Challenge Fund [grant number HICF-1009-003], a parallel funding partnership between the Wellcome Trust and the Department of Health, and the Wellcome Sanger Institute [grant number WT098051].

The study has UK Research Ethics Committee approval (10/H0305/83, granted by the Cambridge South REC, and GEN/284/12 granted by the Republic of Ireland REC). This study was supported by the National Institute for Health and Care Research Exeter Biomedical Research Centre. The research team acknowledges the support of the National Institute for Health Research, through the Comprehensive Clinical Research Network. DECIPHER is funded by Wellcome [WT223718/Z/21/Z]. This research was funded in whole or in part by the Wellcome Trust. For the purpose of open access, the author has applied a CC-BY public copyright licence to any author accepted manuscript version arising from this submission. The views expressed are those of the author(s) and not necessarily those of the Wellcome, NIHR or the Department of Health and Social Care. This study was supported by the National Institute for Health and Care Research Exeter Biomedical Research Centre . The views expressed are those of the author(s) and not necessarily those of the NIHR or the Department of Health and Social Care.

FIGURES & TABLES

Figure 1. Summary of diagnosed DDD probands per Centre.

Number of diagnosed DDD probands included in study (left) and percentage with interventions (treatment/testing; right) separated by the 24 Regional Genetic Services across the UK and Ireland. Black dotted line = average across study.

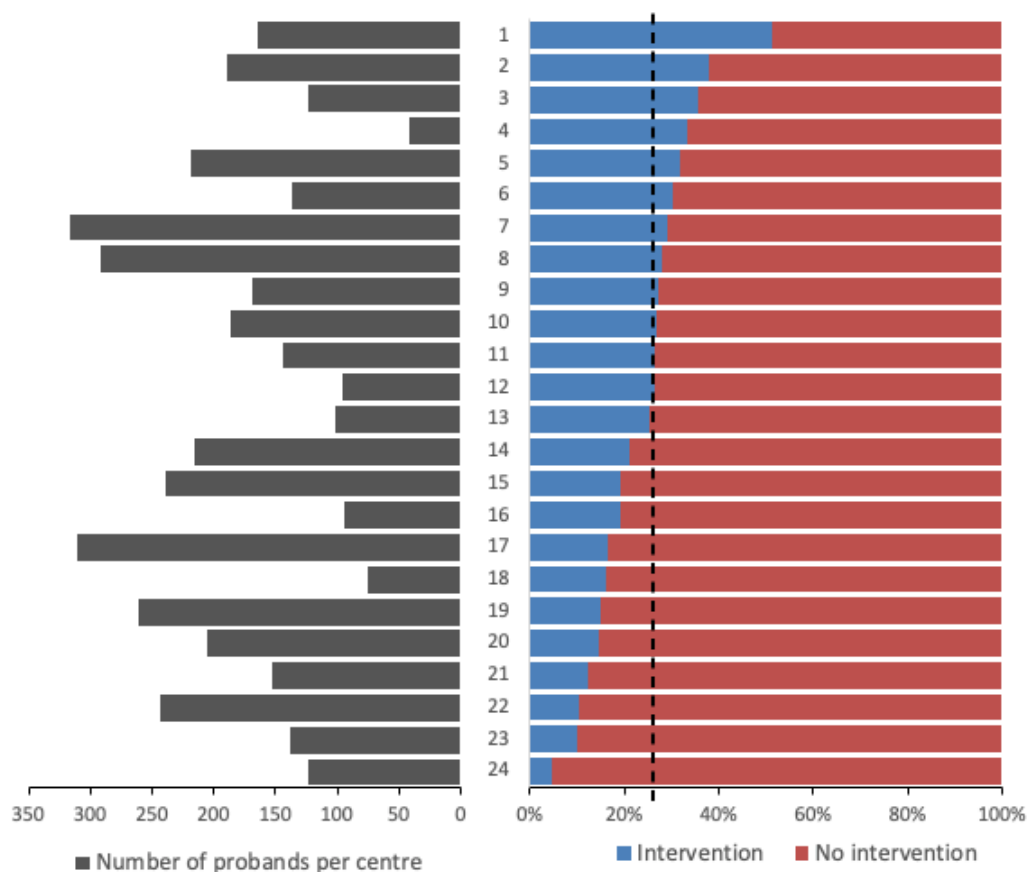


Figure 2. Time to result and age of probands and parents at the point of diagnosis.
PND = prenatal diagnosis; PGT = preimplantation genetic testing; red = no record of prenatal testing being discussed with the family; green = prenatal testing discussed or performed.

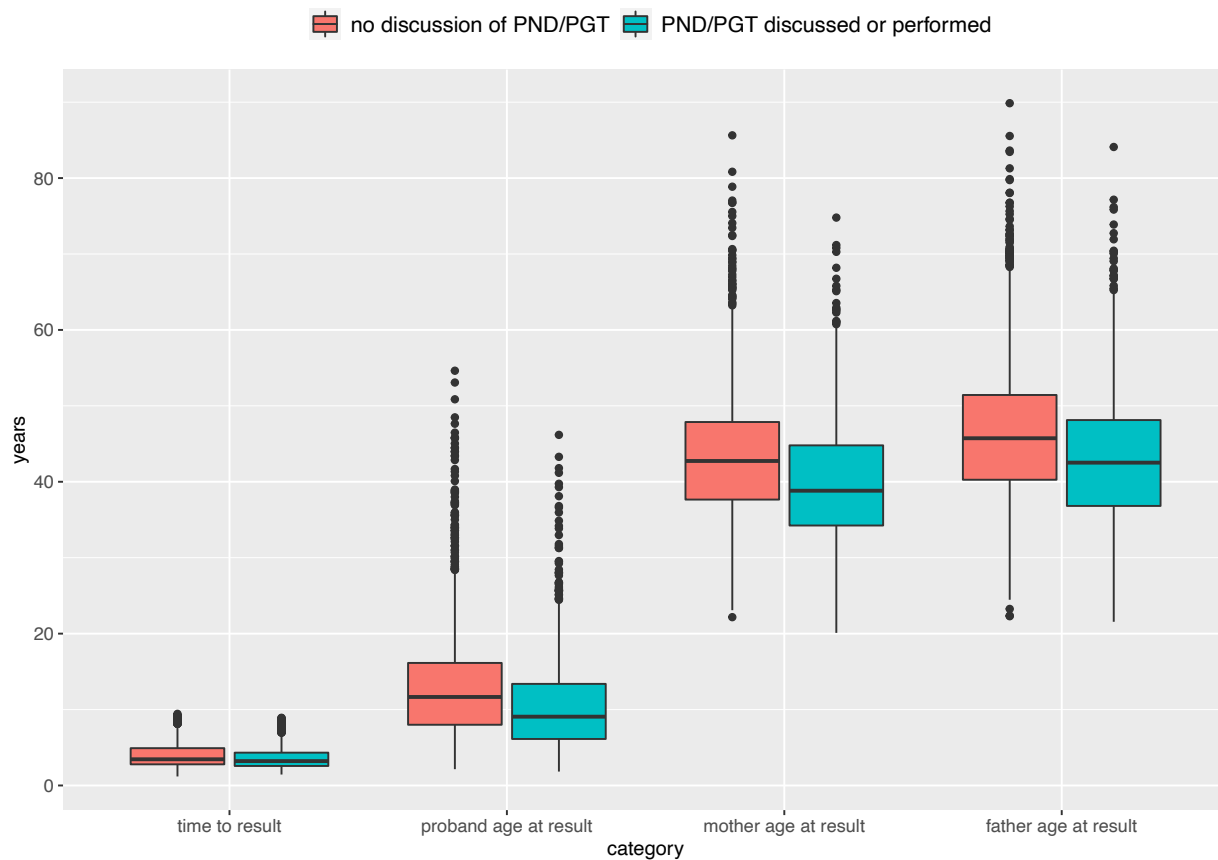


Figure 3. Flowchart summarising outcomes following a genetic diagnosis in the DDD study.
 PND = prenatal diagnosis; PGT = preimplantation genetic testing.

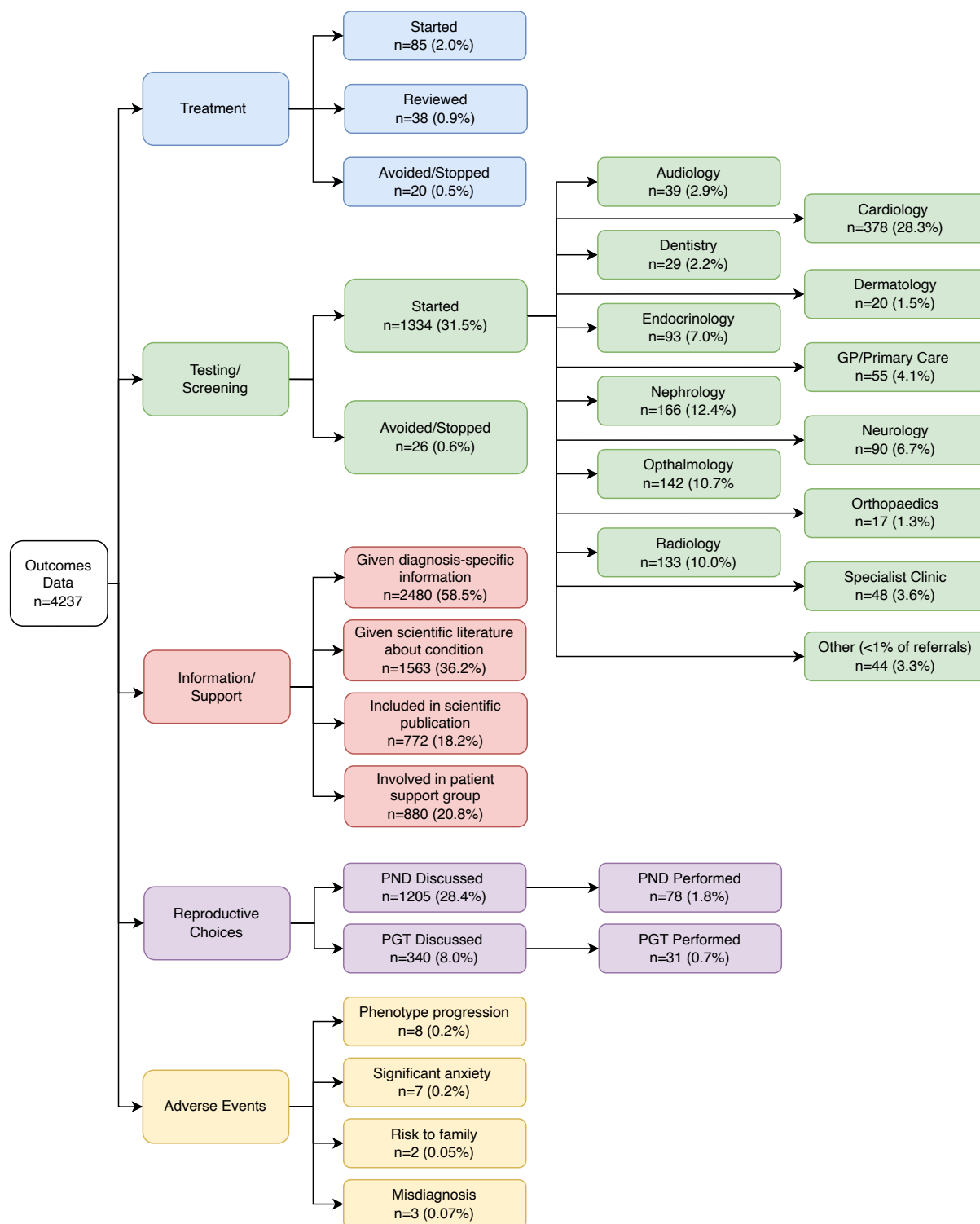


Figure 4. Quasi-natural history of disease and summary of interventions for DDD probands diagnosed with the same condition.

(a) ANKRD11, (b) CTNNB1 and (c) NSD1 (right). Top panel – heatmap of phenotypes grouped by system and age; middle panel – heatmap of interventions grouped by age; bottom panel – histogram of number of probands in each group based on age at recruitment.

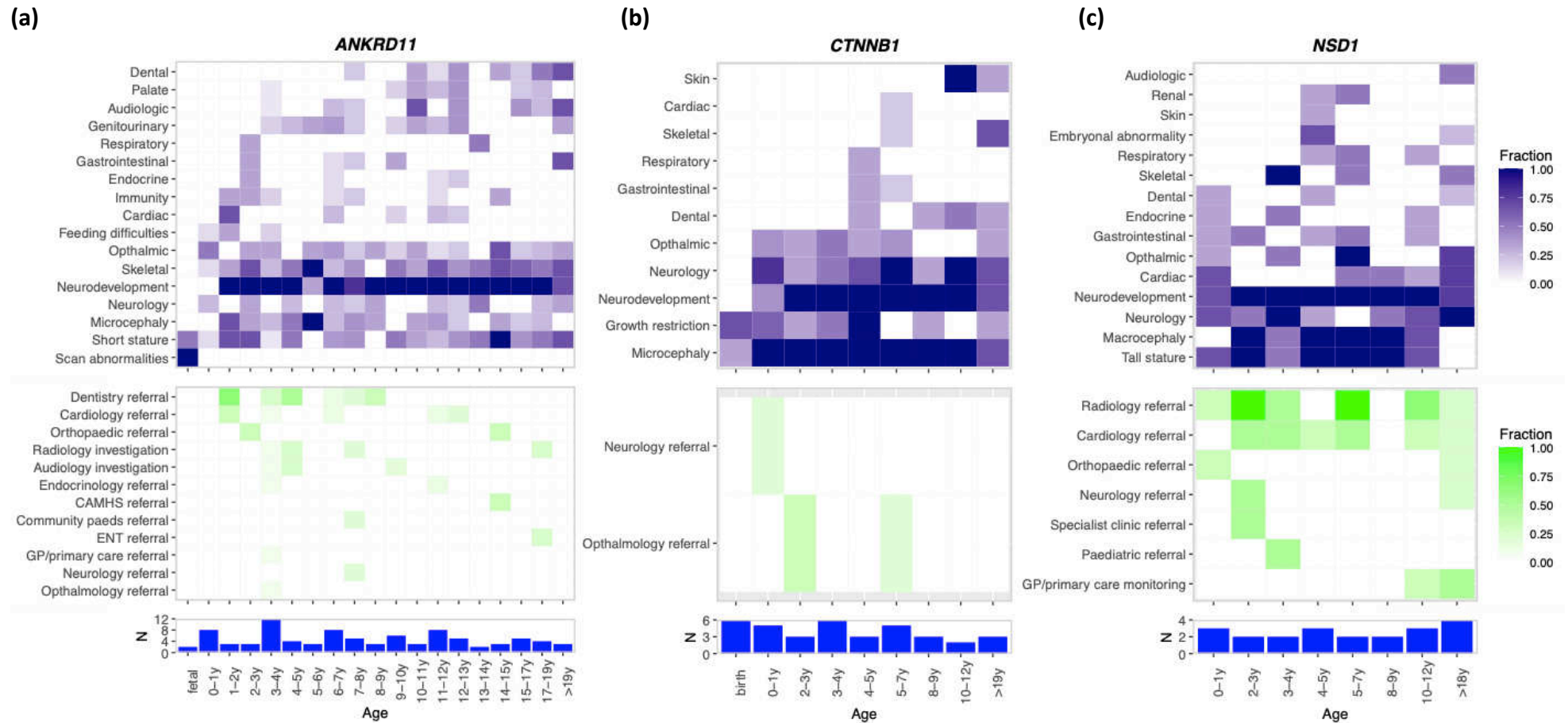


Table 1. Questionnaire results from 4237 diagnosed families in the DDD study.

Topic	Question	Yes	No	Unknown
Interventions	Is a diagnosis specific treatment available?*	144 (3%)	3928 (93%)	165 (4%)
Interventions	Were any one-off investigations performed as a result of diagnosis?*	749 (18%)	3325 (78%)	163 (4%)
Interventions	Was the proband referred to a different specialty for any screening?*	799 (19%)	3295 (78%)	143 (3%)
Interventions	Were there any interventions avoided as a result of diagnosis?*	53 (1%)	3884 (92%)	300 (7%)
Interventions	If dx earlier could any interventions have been avoided?	418 (10%)	3387 (80%)	432 (10%)
Interventions	Additional research/clinical trials available?	1207 (28%)	2483 (59%)	547 (13%)
Reproductive	Has there been any pregnancies since the result?	235 (6%)	3006 (71%)	996 (24%)
Reproductive	Would PND be an option if family wished and applicable?	3029 (71%)	544 (13%)	664 (16%)
Reproductive	Was PND discussed in clinic?	1205 (28%)	2432 (57%)	600 (14%)
Reproductive	Was PND performed?	78 (2%)	3741 (88%)	418 (10%)
Reproductive	Was PGD discussed in clinic?	340 (8%)	3293 (78%)	604 (14%)
Reproductive	Was PGD performed?	31 (1%)	3809 (90%)	397 (9%)
Information/support	Is diagnosis specific information available?	2798 (66%)	1076 (25%)	363 (9%)
Information/support	Was this information given/signposted to the family?	2480 (59%)	1308 (31%)	449 (11%)
Information/support	Were the family given any scientific literature about the condition?	1563 (37%)	2189 (52%)	485 (11%)
Information/support	Were the family included in a scientific paper?	772 (18%)	2651 (63%)	814 (19%)
Information/support	Has the family been involved in a patient support group?	880 (21%)	1395 (33%)	1962 (46%)
Adverse outcomes	Are there any known adverse outcomes?*	95 (2%)	3750 (89%)	392 (9%)

* Further information requested in free text form in separate table

REFERENCES

- 1 Copeland H, Kivuva E, Firth HV, *et al.* Systematic assessment of outcomes following a genetic diagnosis identified through a large-scale research study into developmental disorders. *Genet Med* 2021;**23**:1058–64. doi:10.1038/s41436-021-01110-3
- 2 Srivastava S, Love-Nichols JA, Dies KA, *et al.* Meta-analysis and multidisciplinary consensus statement: exome sequencing is a first-tier clinical diagnostic test for individuals with neurodevelopmental disorders. *Genet Med* 2019;**21**:2413–21. doi:10.1038/s41436-019-0554-6
- 3 Miller DT, Adam MP, Aradhya S, *et al.* Consensus statement: chromosomal microarray is a first-tier clinical diagnostic test for individuals with developmental disabilities or congenital anomalies. *Am J Hum Genet* 2010;**86**:749–64. doi:10.1016/j.ajhg.2010.04.006
- 4 Wright CF, Campbell P, Eberhardt RY, *et al.* Genomic diagnosis of rare pediatric disease in the united kingdom and ireland. *N Engl J Med* 2023;**388**:1559–71. doi:10.1056/NEJMoa2209046
- 5 Malinowski J, Miller DT, Demmer L, *et al.* Systematic evidence-based review: outcomes from exome and genome sequencing for pediatric patients with congenital anomalies or intellectual disability. *Genet Med* 2020;**22**:986–1004. doi:10.1038/s41436-020-0771-z
- 6 Scheuner MT, Rotter JI. Quantifying the health benefits of genetic tests: a clinical perspective. *Genet Med* 2006;**8**:141–2. doi:10.1097/01.gim.0000206657.19102.a0
- 7 Wright CF, Fitzgerald TW, Jones WD, *et al.* Genetic diagnosis of developmental disorders in the DDD study: a scalable analysis of genome-wide research data. *Lancet* 2015;**385**:1305–14. doi:10.1016/S0140-6736(14)61705-0
- 8 Deciphering Developmental Disorders Study. Large-scale discovery of novel genetic causes of developmental disorders. *Nature* 2015;**519**:223–8. doi:10.1038/nature14135
- 9 Deciphering Developmental Disorders Study. Prevalence and architecture of de novo mutations in developmental disorders. *Nature* 2017;**542**:433–8. doi:10.1038/nature21062
- 10 Foreman J, Perrett D, Mazaika E, *et al.* DECIPHER: improving genetic diagnosis through dynamic integration of genomic and clinical data. *Annu Rev Genomics Hum Genet* Published Online First: 7 June 2023. doi:10.1146/annurev-genom-102822-100509
- 11 Thormann A, Halachev M, McLaren W, *et al.* Flexible and scalable diagnostic filtering of genomic variants using G2P with Ensembl VEP. *Nat Commun* 2019;**10**:2373. doi:10.1038/s41467-019-10016-3
- 12 Köhler S, Doelken SC, Mungall CJ, *et al.* The Human Phenotype Ontology project: linking molecular biology and disease through phenotype data. *Nucleic Acids Res* 2014;**42**:D966-74. doi:10.1093/nar/gkt1026
- 13 Molster C, Urwin D, Di Pietro L, *et al.* Survey of healthcare experiences of Australian adults living with rare diseases. *Orphanet J Rare Dis* 2016;**11**:30. doi:10.1186/s13023-016-0409-z
- 14 Morel Swols D, Tekin M. KBG Syndrome. In: Adam MP, Ardinger HH, Pagon RA, *et al.*, eds. *GeneReviews*[®]. Seattle (WA): : University of Washington, Seattle 1993.
- 15 Ho SK, Tsang MH, Lee M, *et al.* CTNNB1 Neurodevelopmental Disorder. In: Adam MP, Everman DB, Mirzaa GM, *et al.*, eds. *GeneReviews*[®]. Seattle (WA): : University of Washington, Seattle 1993.
- 16 Tatton-Brown K, Cole TR, Rahman N. Sotos Syndrome. In: Adam MP, Ardinger HH, Pagon RA, *et al.*, eds. *GeneReviews*[®]. Seattle (WA): : University of Washington, Seattle 1993.
- 17 Low K, Ashraf T, Canham N, *et al.* Clinical and genetic aspects of KBG syndrome. *Am J Med Genet A* 2016;**170**:2835–46. doi:10.1002/ajmg.a.37842
- 18 Rossetti LZ, Bekheirnia MR, Lewis AM, *et al.* Missense variants in CTNNB1 can be associated with vitreoretinopathy-Seven new cases of CTNNB1-associated

- neurodevelopmental disorder including a previously unreported retinal phenotype. *Mol Genet Genomic Med* 2021;**9**:e1542. doi:10.1002/mgg3.1542
- 19 Jeffries AR, Maroofian R, Salter CG, *et al.* Growth disrupting mutations in epigenetic regulatory molecules are associated with abnormalities of epigenetic aging. *Genome Res* 2019;**29**:1057–66. doi:10.1101/gr.243584.118
 - 20 Worrall H, Schweizer R, Marks E, *et al.* The effectiveness of support groups: a literature review. *Mental Health Social Inclusion* 2018;**22**:85–93. doi:10.1108/MHSI-12-2017-0055
 - 21 Pelentsov LJ, Fielder AL, Laws TA, *et al.* The supportive care needs of parents with a child with a rare disease: results of an online survey. *BMC Fam Pract* 2016;**17**:88. doi:10.1186/s12875-016-0488-x
 - 22 Kolemen AB, Akyuz E, Toprak A, *et al.* Evaluation of the parents' anxiety levels before and after the diagnosis of their child with a rare genetic disease: the necessity of psychological support. *Orphanet J Rare Dis* 2021;**16**:402. doi:10.1186/s13023-021-02046-2
 - 23 Delisle VC, Gumuchian ST, Rice DB, *et al.* Perceived Benefits and Factors that Influence the Ability to Establish and Maintain Patient Support Groups in Rare Diseases: A Scoping Review. *Patient* 2017;**10**:283–93. doi:10.1007/s40271-016-0213-9
 - 24 Martin S, Struempf KL, Poblete A, *et al.* An Internet support group for parents of children with neurofibromatosis type 1: a qualitative analysis. *J Community Genet* 2018;**9**:327–34. doi:10.1007/s12687-018-0360-x
 - 25 Bauskis A, Strange C, Molster C, *et al.* The diagnostic odyssey: insights from parents of children living with an undiagnosed condition. *Orphanet J Rare Dis* 2022;**17**:233. doi:10.1186/s13023-022-02358-x
 - 26 Thevenon J, Duffourd Y, Masurel-Paulet A, *et al.* Diagnostic odyssey in severe neurodevelopmental disorders: toward clinical whole-exome sequencing as a first-line diagnostic test. *Clin Genet* 2016;**89**:700–7. doi:10.1111/cge.12732