



**Cite this article:** Graziano M, Solberg MF, Glover KA, Vasudeva R, Dyrhovden L, Murray D, Immler S, Gage MJG. 2023 Pre-fertilization gamete thermal environment influences reproductive success, unmasking opposing sex-specific responses in Atlantic salmon (*Salmo salar*). *R. Soc. Open Sci.* **10**: 231427. <https://doi.org/10.1098/rsos.231427>

Received: 21 September 2023

Accepted: 16 November 2023

**Subject Category:**

Ecology, conservation and global change biology

**Subject Areas:**

evolution/ecology/developmental biology

**Keywords:**

climate change, thermal plasticity, reproductive function, sperm damage, sex-specific responses, external fertilizers

**Authors for correspondence:**

Marco Graziano

e-mail: [marco-graziano89@gmail.com](mailto:marco-graziano89@gmail.com)

Simone Immler

e-mail: [s.immler@uea.ac.uk](mailto:s.immler@uea.ac.uk)

†Passed away.

Electronic supplementary material is available online at <https://doi.org/10.6084/m9.figshare.c.6958228>.

# Pre-fertilization gamete thermal environment influences reproductive success, unmasking opposing sex-specific responses in Atlantic salmon (*Salmo salar*)

Marco Graziano<sup>1</sup>, Monica F. Solberg<sup>2</sup>, Kevin A. Glover<sup>2</sup>, Ramakrishnan Vasudeva<sup>1,4</sup>, Lise Dyrhovden<sup>2</sup>, David Murray<sup>1,3</sup>, Simone Immler<sup>1</sup> and Matthew J. G. Gage<sup>1,†</sup>

<sup>1</sup>Centre for Ecology, Evolution, and Conservation, School of Biological Sciences, University of East Anglia, Norwich NR4 7TJ, UK

<sup>2</sup>Population Genetics Group, Institute of Marine Research, 5817 Bergen, Norway

<sup>3</sup>Centre for Environment Fisheries and Aquaculture Science (CEFAS), Lowestoft NR33 0HT, UK

<sup>4</sup>Faculty of Biological Sciences, School of Biology, University of Leeds, Leeds LS2 9JT, UK

MG, 0000-0001-8850-9036; RV, 0000-0002-3831-0384; DM, 0000-0003-4764-1641; SI, 0000-0003-1234-935X; MJGG, 0000-0003-3318-6879

The environment gametes perform in just before fertilization is increasingly recognized to affect offspring fitness, yet the contributions of male and female gametes and their adaptive significance remain largely unexplored. Here, we investigated gametic thermal plasticity and its effects on hatching success and embryo performance in Atlantic salmon (*Salmo salar*). Eggs and sperm were incubated overnight at 2°C or 8°C, temperatures within the optimal thermal range of this species. Crosses between warm- and cold-incubated gametes were compared using a full-factorial design, with half of each clutch reared in cold temperatures and the other in warm temperatures. This allowed disentangling single-sex interaction effects when pre-fertilization temperature of gametes mismatched embryonic conditions. Pre-fertilization temperature influenced hatch timing and synchrony, and matching sperm and embryo temperatures resulted in earlier hatching. Warm incubation benefited eggs but harmed sperm, reducing the hatching success and, overall, gametic thermal plasticity did

not enhance offspring fitness, indicating vulnerability to thermal changes. We highlight the sensitivity of male gametes to higher temperatures, and that gamete acclimation may not effectively buffer against deleterious effects of thermal fluctuations. From an applied angle, we propose the differential storage of male and female gametes as a tool to enhance sustainability within the hatcheries.

## 1. Introduction

Environmental changes are intrinsically related to key evolutionary concepts including adaptation, selection and speciation. Irrespective of the causes and strengths of environmental changes, they inevitably influence natural populations; the efficiency and degree of resistance of the latter depend on their ability to adjust through adaptive responses such as migration, phenotypic plasticity, and epigenetics [1,2]. These mechanisms determine the long-term perspective of organisms persisting in the face of climate change [3]. The ability to evolve an adaptive response strongly depends on genetically heritable variation and on the demographic costs of such adaptation [4]. If environmental changes are too extreme or if they occur over periods that are evolutionarily irrelevant, high mortality and extinction will prevent any adaptive evolutionary response [5]. Here, phenotypic plasticity may aid in the expression of differential phenotypes and allow for an efficient strategy to cope with sudden environmental fluctuations [6].

Phenotypic plasticity in the context of environmental change is particularly important when it affects several generations, referred to as inter- or transgenerational plasticity, where the environment or condition of the parents affects the fitness of future generation(s) [7–9]. Such multi-generational responses can be adaptive when the environment experienced by the parent/s is a good predictor for the conditions to be encountered by the offspring, enhancing its fitness in the matched environment [10–12]. In the seed beetle *Stator limbatus*, mothers raised under poor nutritional conditions pass on their environmental ‘experience’ by increasing egg size to protect their offspring against starvation [13]. In the flour beetle *Tribolium castaneum*, males that experienced an experimental heat wave produced sons whose reproductive fitness remained lower than controls despite experiencing benign conditions, demonstrating a sire effect carried over to the offspring via the sire’s sperm [14]. In a follow up study using the same model organism, a single generation exposure at 30°C or 38°C revealed that both sperm and ova were optimized (in opposing directions) for their morphology and function in the environment in which the plasticity was induced, revealing an adaptive effect [14,15]. In spiny chromis *Acanthochromis polyacanthus* and sheepshead minnows *Cyprinodon variegatus*, thermal tolerance in the offspring was enhanced by parental exposure to warm temperatures [16,17].

Among the abiotic environmental variables affecting organisms, temperature is one of the most studied [18]; specifically in the last decade, with the changing climate manifesting in higher levels of short- and long-term fluctuations [19]. Across Europe for example, the Heat Wave Magnitude Index (HWMId, adimensional), expressing the duration and intensity of heatwaves, has increased steadily from an average of –2 to +2 between 1980 and 2015, and is projected to augment until 2100, even considering the most conservative of the predictions [20,21]. In riverine systems, global mean and maximum water temperatures are projected to increase by 0.8–1.6 and 1.0–2.2°C respectively according to the Special Report on Emissions Scenario (SRES) B1–A2 for 2071–2100 relative to 1971–2000 [22]. Considering these fluctuations there is a need to assess how and if organisms (and their gametes) can cope with such changes in their habitat, especially during sensitive life stages.

Organisms can respond in a multitude of ways to thermal variation, from changes in behaviour and phenology [23] to mitochondrial function [24,25] and osmoregulatory adaptations [26]. Importantly, temperature affects a key aspect defining the survival of a species—its ability to reproduce and attain fertilization success. Experimental evidence from a wide array of species highlights how temperature has damaging impacts on fertility [27] and that the threshold temperature for fertility is much lower than for survival [28]. In fact, high temperatures have been shown to affect the germ line and the associated reproductive efficiency of both sexes [29,30], because thermal stress affects meiotic divisions much more than mitotic proliferation [31,32].

Male and female gametes may respond differently in varying environments and their optimal conditions may vary [15], before and after ejaculation. Sperm production and function are particularly sensitive to higher temperatures which result in lower sperm density (e.g. [33], Cnidarian *Acropora digitifera*), lower motility (e.g. [34], *Drosophila subobscura*; [35], *D. tripunctata*), reduced testes size,

sperm size and sperm competitiveness (e.g. [36], cowpea weevil *Callosobruchus maculatus*; [37], guppy *Poecilia reticulata*), changes in biochemical composition (e.g. [38], several teleosts) and increased DNA damage (e.g. [29], *Mus musculus*; [39], *Sus* sp.). In the whitefish *Coregonus lavaretus*, the pre-fertilization incubation of sperm to warmer temperatures resulted in smaller offspring with reduced swimming performance as compared to the colder treatment [40].

Similarly, eggs are highly sensitive to temperature experienced before fertilization [41] where higher temperatures resulted in reduced production (e.g. [42], bed bug *Cimex lectularius*), larger [15] (*T. castaneum*) or smaller egg sizes [43] (*C. maculatus*), reduced fertilization capability (e.g. [44], *Bos taurus*) and lower offspring fitness including lower survival rates (e.g. [14], *T. castaneum*; [45], fruit moth *Grapholita molesta*). External factors influencing gamete function could therefore provide the basis for the selection of adaptive responses in the resulting offspring. Such a process would allow individuals to improve their reproductive fitness by priming their gametes to the environment during fertilization and offspring development. Gamete thermal plasticity could evolve as an adaptive trait when the environment experienced by the parents matches that of the offspring [10]. However, the mechanisms by which temperature affects gametic performance and how these influence offspring fitness remain poorly understood [46–49].

Exploring the consequences of gametic thermal environments for offspring fitness is particularly important for stenothermal species like salmonids that are highly sensitive to thermal fluctuations [50–54]. Minor changes in the thermal environment experienced by sperm for instance have been found to have significant effects on its function in the common carp (*Cyprinus carpio*), in the brown trout (*Salmo trutta*) and in the greyling (*Thymallus thymallus*) and in the turbot *Lota lota* [55–58]. High temperatures can similarly cause increased production of reactive oxygen species (ROS) in human and mouse sperm that can lead to oxidative stress, disrupt the lipidic and proteic components of sperm and cause DNA damage [59,60].

We investigated the potential role of thermal plasticity and/or thermal selection in eggs or sperm and how this affects the resulting offspring and their adaptation to thermal variation. To do this, we monitored offspring survival to hatching, hatching synchrony, embryonic age at hatching and hatching success in crosses generated using warm- and cold-incubated gametes in Atlantic salmon (*Salmo salar*). These crosses were compared using a full-factorial design, with half of each clutch reared in cold temperatures and the other in warm temperatures. This specifically allowed us to test the hypothesis that the priming of gametes to warm or cold temperature before fertilization should benefit embryo development and hatching success in the same temperature and vice versa. In addition, we aimed to disentangle sex-specific effects using a full-factorial design and study offspring fitness in crosses where pre-fertilization temperatures of gametes were not matched.

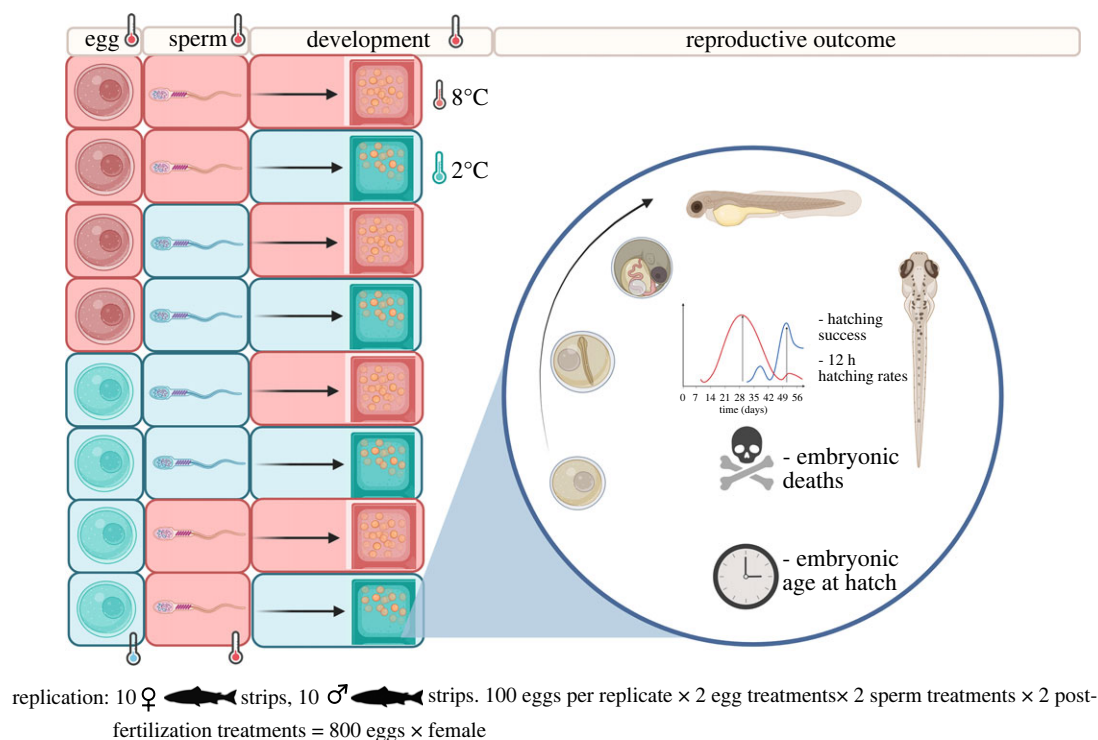
## 2. Methods

### 2.1. Fish origin and gamete handling conditions

All Atlantic salmon used in this study came from the commercial strain Mowi from the breeding facility in Askøy (Norway). Stripping of gametes was conducted using standard hatchery procedures as described previously [61,62]. Briefly, gametes from males were collected from the urogenital pore by applying gentle abdominal pressure and prior to each stripping, urogenital pores were dried to avoid sperm activation before the start of the experiments. Eggs were instead collected from the abdominal cavity of euthanized females at the peak of their sexual maturation. Using these procedures, eggs from ten females and sperm from ten males were collected. Sperm samples were transferred into sterile flasks kept on ice in sealed polystyrene boxes. Eggs in their ovarian fluid were placed into sealed egg buckets and kept on ice. Gametes were then transported to Norwegian Institute of Marine Research (IMR) experimental aquaculture facilities and laboratories in Matre and processed the following morning.

### 2.2. Experimental design and gamete temperature priming

Following collection, gametes from ten males and females were split and incubated overnight for 24 h at either 2°C (cold) or 8°C (warm). The two temperatures used were selected because they are both within thermal limits of Atlantic salmon [63]. *In vitro* fertilization assays were conducted following a full factorial design which resulted in four different treatments for each family (e.g. male 1 × female 1):



**Figure 1.** Experimental design showing the treatments (warm (red) or cold (azure)) for eggs, sperm and embryos in each unique family ( $n = 10$ ). *In vitro* fertilization assays were performed by adding 100  $\mu$ l raw milt to a batch of 200 eggs per treatment. Each of the batches was then split into two halves again after fertilization and reared in cold or warm hatchery conditions (100 fertilized eggs per family per treatment), using a full-factorial design. For each sub-clutch we assessed the reproductive outcome shown on the right including survival before and after the eyed stage, hatching success, hatching time and synchrony and developmental abnormalities.

warm sperm  $\times$  warm eggs, warm sperm  $\times$  cold eggs, cold sperm  $\times$  warm eggs, cold sperm  $\times$  cold eggs. In each fertilization assay 100  $\mu$ l of raw milt were added to a batch of 200 eggs for each treatment and the mixture was subsequently activated with 200 ml of river water ( $5.7 \pm 0.46^\circ\text{C}$ ). Each family was generated by a unique combination of male and female (e.g. male A  $\times$  female A), and all individuals were only used for one cross (e.g. female A was only ever paired with male A, and vice versa). Each of the batches was split into two halves again after fertilization and one half reared in cold or warm hatchery rearing units kept at  $2 \pm 0.72^\circ\text{C}$  or  $8 \pm 0.97^\circ\text{C}$  respectively.

For each sub-clutch, we assessed survival before and after the eyed stage, hatching success, hatching time and synchrony and developmental abnormalities (e.g. spinal deformities, incomplete neurogenesis, or abnormalities of the yolk sack; 'malformed embryos') every 12 h for the duration of the experiment (75 days for warm incubated and 180 days for cold incubated embryos; figure 1).

### 2.3. Statistical analyses

All analyses were performed using R Studio (RStudio (2021), Integrated Development for R; RStudio, PBC, Boston, MA) (v 1.3.1093) equipped with the packages reported in the electronic supplementary material. All data were analysed using linear mixed effect models (LMMs) and generalized linear mixed effect models (GLMMs) in the package *lme4*. Error distributions were determined by checking the relationship between variance and mean of the response variables as well as the necessary assumptions for data distribution [64]. Models were fitted using restricted maximum likelihood (REML) methodology for LMMs and maximum likelihood estimators for GLMMs, enabling model rectification and validation [65]. The residuals from linear models were also explored for normality and homoscedasticity. Significant main effects and interactions were extrapolated using *t*-tests with Satterthwaite's approximation controlling for degrees of freedom used as implemented in *lmerTest* and by using the functions available through *emmeans* and *emmtrends*. Additionally, the runs from the models were also generated in the form of analyses of variance with output from type III Wald Chi

square tests. Model performance was explored for each dependent variable of interest by comparing residual dispersions, model predictions, AICs and BICs for each of the computed models through the *lme4* 'summary' function output and through residual diagnostics implemented by the package *DHARMA*. Fitting improvements between different hierarchical model structures were tested for significance by using the *anova* function.

## 2.4. Differences in embryonic age at hatching as a consequence of gamete priming and developmental temperature

Divergence in embryonic age at hatching among the thermal regimes was determined using *lmer* using a Gaussian family structure. Our fixed factors were egg and sperm pre-fertilization temperature and embryo development temperature (2 or 8°C) and all their possible interactions. Family ID was included as random factor with random slopes.

## 2.5. Hatching rates

Effects of temperature on hatching was analysed using the *glmer* function with binomial error structure (logit link) from the package *lme4*. This model included the proportion of offspring hatched relative to the starting number of eggs (*cbind*) entered as response variable, and time post-fertilization, egg and sperm pre-fertilization temperature and embryo development temperature and all their possible interactions as fixed effects. Family ID was included as random factor with random slopes.

## 2.6. Hatching success

Following the thermal treatments, differences in the proportion of successful hatchlings out of total egg numbers were modelled using *glmmTMB* with binomial error structure (logit link), for the better residual diagnostics that this model showed compared to other generalized linear models. We included the number of successfully hatched embryos on the total number of starting eggs (therefore accounting for the eggs that failed to develop) by using the *cbind* function and checked that the model was not over dispersed. Our fixed factors were egg and sperm pre-fertilization temperature and embryo development temperature and all their possible interactions. Family ID was included as random factor with randomized slopes.

## 2.7. Embryonic deaths and abnormal development

The number of dead embryos whose development was arrested after reaching the eyed stage (dead embryos at eyed stage), the number of embryos that died while hatching (dead embryos at hatching), and the number of hatched embryos with evident abnormalities were all analysed as proportions on the number of starting eggs for each treatment with the *cbind* function using *glmer*, function with binomial error structure (logit link) and optimized through the 'Nelder-Mead' function. Models included pre-fertilization temperatures for sperm and eggs respectively, embryo development temperature and their interactions as fixed effects and family ID (1 to 10) as random effect. To account for our full-factorial design, we added random slopes to account for variability across families.

# 3. Results

## 3.1. Effects on embryonic age at hatching

Age at hatching was influenced by sperm pre-fertilization temperature. These effects were minor but significant and consistent across groups, with warm-incubated sperm leading to 0.74 degree-days (temperature (°C) × day) delay in the average emergence of hatchlings (table 1). However, there was a strong significant interaction between the sperm pre-fertilization temperature and embryo development temperature: when sperm pre-fertilization temperature matched embryo development temperature, larvae started hatching on average 1.02 degree-day earlier (figure 2*a,b*; table 1). On the contrary, matching eggs and developmental temperature led to an average 0.67 degree-days delay in hatching time. Embryo development temperature had the strongest effect with warm temperature

**Table 1.** Linear mixed effect model (lmer in R) for age at hatching (degree days) in response to egg incubation temperature, sperm incubation temperature, and embryo development temperature. The results are shown for a total of 80 split-design crosses, with ten males and ten females crossed pairwise. Estimates are provided with standard error (SE), confidence intervals (CI) and degrees of freedom (df).

variable						
random	variance					
<b>Family ID</b>	1.47					
<b>Residual</b>	29.44					
Fixed	Estimate	SE	CI	df1, df2	t	p
<b>Intercept</b>	347.49	0.42	346.64, 348.36	1, 9.78	812.47	<0.001
<b>Egg</b>	0.326	0.27	−0.21, 0.86	1, 6134	1.17	0.23
<b>Sperm</b>	−0.74	0.29	0.16, 1.32	1, 6133	2.52	<b>0.011</b>
<b>Dev</b>	125	0.27	−124.60, 125.66	1, 6131	460.99	<0.001
<b>Egg* Sperm</b>	−0.539	0.40	−1.33, 0.25	1, 6131	−1.33	0.182
<b>Egg* Dev</b>	0.672	0.38	−0.08, 1.42	1, 6133	1.74	<b>0.008</b>
<b>Sperm* Dev</b>	−1.024	0.40	−1.81, −0.23	1, 6132	−2.54	<b>0.011</b>
<b>Egg* Sperm* Dev</b>	−0.177	0.55	−1.27, 0.93	1, 6131	−0.31	0.749

resulting in development to be faster by 146 days compared to the cold incubated embryos (mean  $\pm$  s.d. warm:  $60.5 \pm 0.709$  days; cold:  $173.7 \pm 0.710$ ).

### 3.2. Proportion of hatchlings born every 12 h

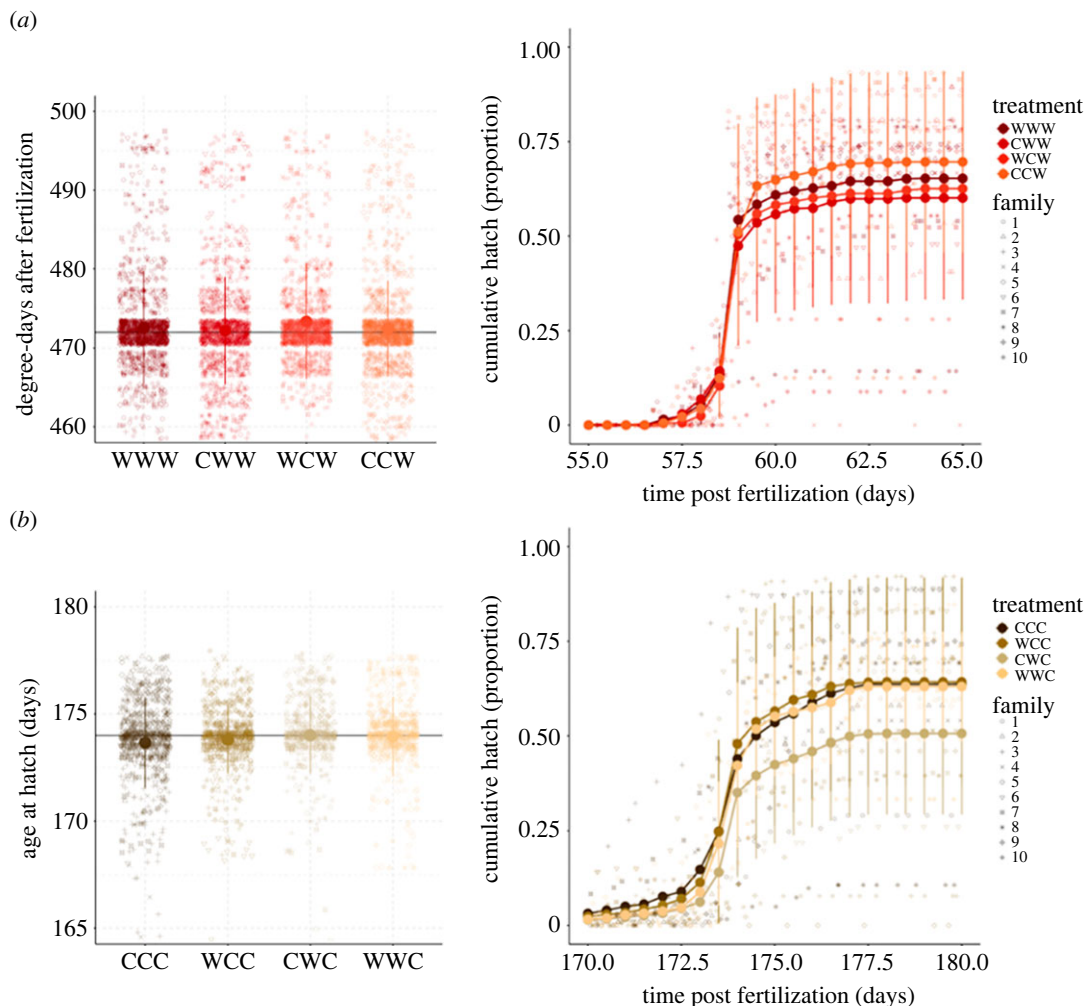
Hatching rate was influenced by gamete pre-fertilization temperature but showed opposite trends for egg and sperm. Hatching rates were on average  $18 \pm 5.1\%$  higher in eggs exposed to warm pre-fertilization temperature but were significantly lower by  $11 \pm 5.5\%$  when sperm were exposed to warm temperature. Three-way interactions and *post hoc* tests showed that when developmental temperature also matched sperm and egg temperature, hatching rate was  $28 \pm 11\%$  lower. Developmental temperature showed again the greater impact with more than double the number of hatchlings every 12 h recorded in warm groups as compared to cold groups and explaining a variation through time of  $66 \pm 5.2\%$  (figure 3, table 2).

### 3.3. Hatching success

Total hatching success showed opposite trends in response to pre-fertilization temperature for sperm and eggs, with warm-incubated sperm siring significantly lower numbers than warm-incubated eggs (a reduction in  $20 \pm 6.8\%$  and an increase in  $14 \pm 6.6\%$  respectively). We found no significant interaction between sperm and egg pre-fertilization temperature, but we found a negative effect when egg pre-fertilization temperature and embryo development temperature were set to  $8^\circ\text{C}$  (figure 4, table 3).

### 3.4. Effect on embryonic deaths and developmental abnormalities

The proportion of embryos that died after reaching the eyed stage was significantly lower in the cold embryo development treatment than in the warm treatment, although in males gametes exposed to warm pre-fertilization temperature, the number of embryos dying after the eyed stage tended to be lower (non-significant). We found no effects of gamete pre-fertilization temperature on embryo survival after the eyed stage (electronic supplementary material, figure S1, table S2). Embryo development temperature, but not the pre-fertilization gamete temperature, affected the numbers of embryos dying during the hatching process as well as the embryos showing clear signs of abnormal development. Interestingly, these effects were detected exclusively in cold-developed groups (electronic supplementary material, figures S2 and S3; tables S3 and S4).



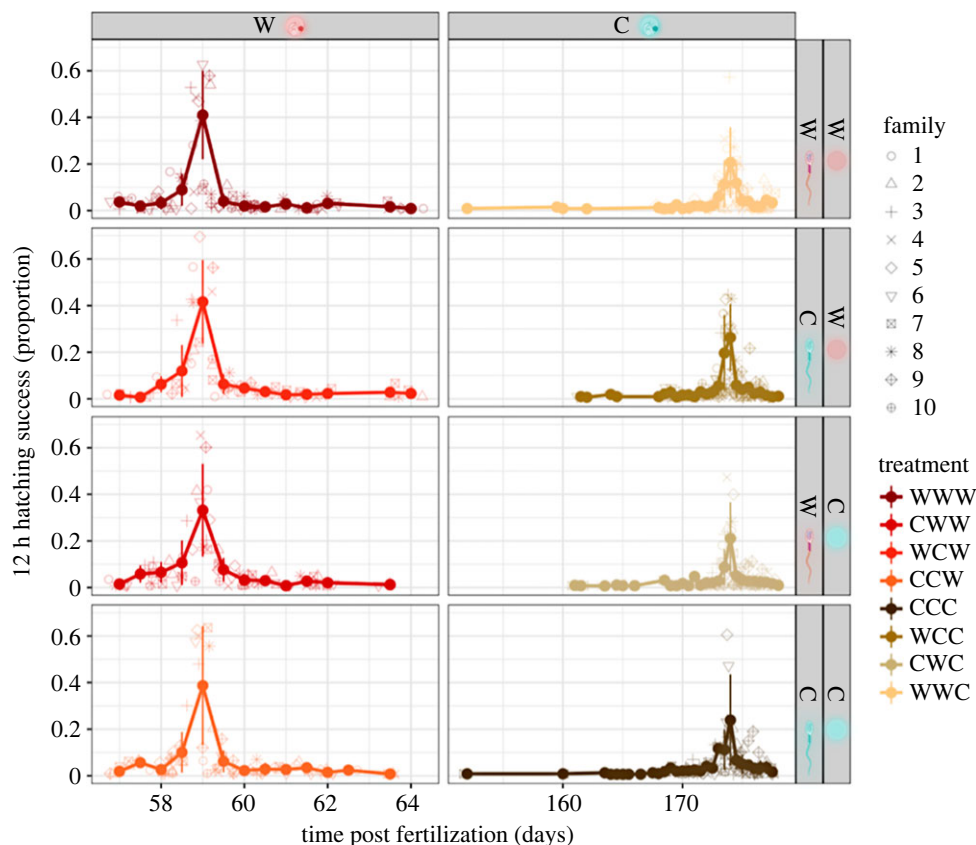
**Figure 2.** Age at hatching (left) and cumulative proportions of successfully hatched larvae (right) following the different combinations of gamete incubation regimes (cold (C), 2°C; warm (W), 8°C) in batches developing in the (a) warm (8°C) or (b) cold (2°C) embryo development treatment. Letters in the treatment acronyms are ordered as follows: egg temperature, sperm temperature, embryo development temperature. The means (dots)  $\pm$  standard deviations (vertical bars) are shown for a total of 80 split-design crosses, with ten males and ten females crossed pairwise in an equal number of unique families.

## 4. Discussion

Our study provides clear evidence that in an externally fertilizing species, the thermal environment experienced by gametes alone at the pre-fertilization stage can influence reproductive fitness. We further support the idea that thermal regimes affect gamete function [27,66–68] and found that the effect of the temperature experienced by gametes prior to fertilization was opposite in sperm and eggs. In addition, we found that temperature during embryo development was the main driver of differences in survival, age at hatching and developmental abnormalities, but it did not affect total number of offspring. The matching of gamete incubation temperature with embryo development temperature did not improve overall hatching success and again sperm and eggs showed opposite trends. We discuss our results and possible mechanisms that may explain the observed effects below.

### 4.1. Temperature effects on sperm and eggs

Sperm traits such as morphology, swimming behaviour, longevity and motility can be affected by environmental temperature [15,40,57]. In our study, sperm performance was negatively affected by warmer temperatures, translating into lower hatching success. These temperature effects on sperm can be explained by a series of non-mutually exclusive mechanisms. Sperm selection in response to varying environments could act in two ways. First, a specific gamete cohort could be selected that is particularly adapted to specific environmental conditions [69] and second, environmental conditions



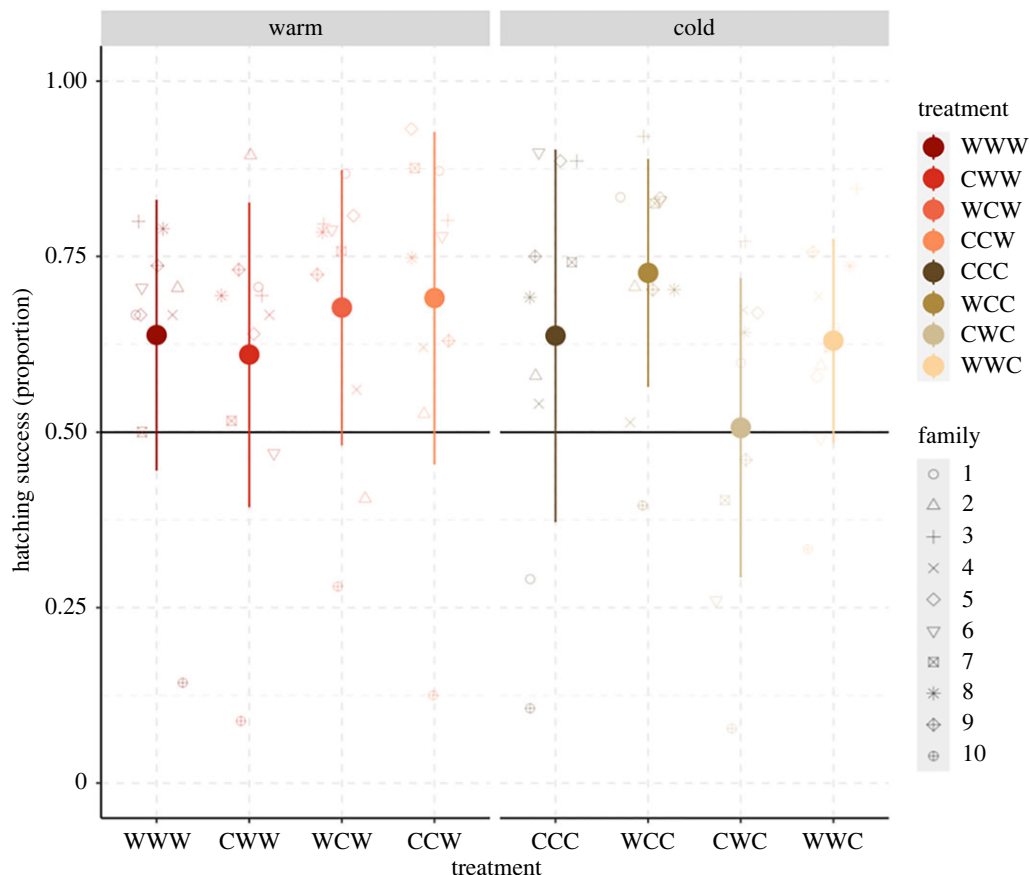
**Figure 3.** Hatching rates (proportion) assessed every 12 h under the different thermal regimes (cold (C), 2°C; warm (W), 8°C). Letters in the treatment acronyms are ordered as follows: egg temperature, sperm temperature, embryo development temperature. The means (dots)  $\pm$  standard deviations (vertical bars) are shown for a total of 80 split-design crosses, with ten males and ten females crossed pairwise.

**Table 2.** Generalized linear mixed effect model (glmer in R) for hatching rate in response to pre-fertilization temperature for eggs, sperm, and embryo development temperatures (2 or 8°C). The results are shown for a total of 80 split-design crosses, with ten males and ten females crossed pairwise and creating ten unique families (family ID = 10). Estimates are provided with standard error (SE), confidence intervals (CI), and degrees of freedom (df). Number of observations = 701.

variable							
random	variance						
Family ID							0.08
Number of obs:	701	Groups:	FAMILY,	10			
Fixed	Estimate	SE	CI	df1, df residuals	z	p	
Intercept	-2.96	0.09	-3.17, -2.76	1, 692	-30.28	<0.001	
Egg	0.18	0.05	0.08, 0.29	1, 692	3.62	<0.001	
Sperm	-0.11	0.06	-0.23, -0.01	1, 692	-2.13	0.032	
Dev	0.67	0.05	0.56, 0.77	1, 692	-12.67	<0.001	
Egg*Sperm	0.04	0.07	-0.10, 0.19	1, 692	0.55	0.58	
Egg*Dev	0.07	0.07	-0.21, 0.07	1, 692	-0.91	0.36	
Sperm*Dev	0.04	0.07	-0.11, 0.19	1, 692	0.55	0.57	
Egg*Sperm*Dev	-0.28	0.10	-0.49, -0.08	1, 692	0.10	0.007	

can hamper the biochemical and biomolecular pathways of gamete function with consequences for reproduction [49]. In our study, the warmer temperature of 8°C could increase ROS production in sperm [55] and their impact is known to reduce membrane fluidity, mitochondrial function, enzymatic





**Figure 4.** Proportion of successfully hatched embryos in response to the different thermal regimes at the pre- and post-fertilization stages (cold (C), 2°C; or warm (W), 8°C). Letters in the treatment acronyms are ordered as follows: egg temperature, sperm temperature, embryo development temperature. The data are shown as mean  $\pm$  SE for a total of 80 split-design crosses, with ten males and ten females crossed pairwise.

**Table 3.** Generalized linear model (glmer in R) for the proportion of successfully hatched embryos in response to pre-fertilization temperature for eggs, sperm, and embryo development temperatures (2 or 8°C). The results are shown for a total of 80 split-design crosses, with ten males and ten females crossed pairwise and creating ten unique families (family ID = 10). Estimates are provided with standard error (SE), confidence intervals (CI), and degrees of freedom (df). Number of observations = 78.

variable						
random	variance					
Family ID	0.08					
Number of obs:	78	Groups:	FAMILY,	10		
Fixed	Estimate	SE	CI	df1, df residuals	z	p
Intercept	-0.52	0.13	-0.79, -0.23	1, 9	-3.96	<0.001
Egg	0.14	0.06	0.01, 0.27	1, 70	2.11	0.004
Sperm	-0.20	0.06	-0.33, -0.07	1, 70	-2.94	<0.001
Dev	0.08	0.06	-0.04, 0.21	1, 70	1.29	0.15
Egg*Sperm	0.07	0.09	-0.12, 0.26	1, 70	0.74	0.32
Egg*Dev	-0.15	0.09	-0.34, 0.03	1, 70	-1.68	0.009
Sperm*Dev	0.08	0.09	-0.10, 0.27	1, 70	0.90	0.22
Egg*Sperm*Dev	-0.01	0.13	-0.27, 0.24	1, 70	0.07	0.94

activity and DNA integrity [60,70]. Similar changes have been shown in inactivated sperm in the closely related brown trout *Salmo trutta* [58]. Males in many taxa have been shown to vary sperm motility and phenotype in response to varying environmental conditions [71–73]. Such changes can be induced by a variety of abiotic environmental factors such as pH, ionic content and temperature [74]. Similar to sperm, egg quality is affected by environmental temperature and may cause variation in traits including size and biochemical composition of the yolk [15,75].

A particularly interesting finding was the opposite effect of temperature on sperm and eggs with eggs performing better at 8°C and sperm performing better at 2°C. This finding suggests that a global increase in temperature may be particularly important for male fertility, and the resulting offspring (e.g. in *Tribolium* flour beetles, see Sales *et al.* [14]). Such differences between males and females acquire relevance as salmon spawning events are characterized by a male-biased operational sex-ratio with more males competing for a smaller pool of females [76]. This reflects the intensity of breeding competition between males, as also shown by the evolution of alternative reproductive tactics [77,78] in this species [79,80] as well as in other salmonids [81]. Therefore, it is possible that warming-related effects could lower sperm competition dynamics and alter mate choice even more in an already threatened species. Post-release environmental temperature could also affect gamete function and phenotypic plasticity, as well as the interaction between male and female haplotypes in response to environmental fluctuations. However, we found no interaction effects between gamete pre-fertilization temperature and developmental environment that would support this idea (see next section).

## 4.2. Gamete effects on offspring fitness

Pre-fertilization temperature variation did not only affect gamete performance but also offspring fitness. Therefore, the pre-fertilization thermal environment could have shaped offspring fitness via epigenetic factors triggered by physiological changes [82,83], as well as via the selection of specific haplotypes as previously described [69]. Several epigenetic markers such as DNA methylation, modifications of histones or cytoplasmic and nuclear proteins could be responsible for the variation in embryonic age at hatching and hatching rates [84,85]. Interestingly, high ROS levels experienced by sperm have been linked to altered methylation patterns of the haploid DNA of sperm, as well as its lipidic and proteic content [59,60]. Furthermore, temperature can affect components of the seminal fluid including peptides, RNAs, enzymes and hormones which are known to influence offspring development [48,71,86–88]. Additionally, changes in the composition of reproductive fluids can in turn affect gamete composition and the resulting offspring fitness [89]. Such effects on sperm or seminal fluid components could have been altered in response to the thermal treatments performed in our experiment, leading to the observed lower hatching success observed among warm-exposed sperm groups. In the whitefish *Coregonus lavaretus*, offspring sired by sperm that had been exposed to 6.5°C pre-fertilization exhibited poorer swimming performance and were smaller than their siblings sired by sperm kept at 3.5°C [40]. Neither differences in sperm performance were observed between the two temperature regimes, nor were any effects on hatching success. One possible explanation for the differences between the *Coregonus* study and our own study could be the smaller temperature range used in the former, which may be less stressful for sperm than our treatments. In addition, these temperatures and their effects are likely to be highly species specific.

Survival and normal development of embryos were mainly affected by embryo development temperature whereas pre-fertilization gamete incubation temperature only showed an effect in interaction with the embryo development temperature. The number of dead embryos at the eyed stage was significantly higher in the warm-development temperature treatments and tended to be lower in groups where sperm had been exposed to warm pre-fertilization temperature. Surprisingly, malformed hatchlings and mortality during the hatching process were observed exclusively in cold-developed groups, suggesting a different purging mechanism toward sub-optimal phenotypes operated by cold developmental temperatures. Within these treatments, the number of abnormal embryos was generally higher when sperm were exposed to warm temperatures, although not statistically significant, thus providing some insight into the detrimental effects of warm pre-fertilization sperm incubation temperature. Environmental events can be carried over via sperm and negatively affect offspring fitness [14]. It would be interesting to investigate if such negative effects on sperm were at least partly responsible for the lower hatching success and whether they occurred before or during fertilization, or during early development stages rather than later in development. It is also possible that the strength of all these above-mentioned changes could have been stronger if we had used a larger number of mating pairs, thus augmenting the statistical power. The temperature used in our

experiment during fertilization was intermediate and standardized across all treatments and we cannot exclude that the abrupt change in temperature at fertilization may differentially affect some sperm cohorts leading to intra-ejaculate selection.

In crosses where sperm pre-fertilization temperatures and embryo development temperature were set to warm (8°C), offspring hatched on average ~1 degree day earlier. This could be consistent with the idea of a gamete-driven adaptive response or with a physiological optimization [90]. In salmon, timing of hatching and larval emergence are tightly correlated [91,92] and early emerging alevins can acquire competitive advantage due to prior residency, showing better growth and survival in the wild [93]. However, despite observing a statistically significant delay in hatching in the treatments where sperm did not match the embryo development temperature, these differences were so small they are unlikely to represent a competitive advantage. In a study testing the presence for additive genetic variation for egg development timing between wild and farmed salmon, differences in hatching times between 1 and 15 degree days were interpreted to be biologically irrelevant when compared to other factors such as the timing of spawning among females, which can vary by several weeks [94]. On the other hand, we also found higher numbers of hatchlings emerging every 12 h in groups where egg pre-fertilization temperature was set to warm, and the opposite effect was observed for male gametes. Thus, hatching was in general more synchronous when eggs were kept in a warmer environment. However, the beneficial effect of warm incubation of eggs was not enough to maintain a synchronized hatching peak when sperm were also exposed to warm temperatures and the embryos developed in a warm environment. This lack of synchrony could hamper offspring success, because spread-out timing of hatching may increase the *per capita* predation risk [95]. On the other hand, spreading hatching over time could be an efficient strategy to increase the chance to match a favourable environment. Therefore, further studies should focus on this aspect to better understand its biological relevance in nature.

From an applied angle, the application of a cold treatment to sperm and a warm treatment to eggs could prove a useful strategy to maximize offspring production. Thermal priming of gametes could be therefore used within the hatcheries, where synchronously maturing embryos could improve sustainability and be again a productive advantage.

Nevertheless, we cannot exclude that in relation to hatching times and synchrony, sharper environmental fluctuations at temperatures that are outside the optimal temperature range for salmon might change the observed patterns and be more realistic in a climate change context (e.g. sudden heatwave). This may be particularly important where rapid fluctuations in temperature occur, such as those characteristic of man-induced climate changes over the last two decades [96]. In thermally sensitive and cold-adapted species like salmonids, we might not expect adaptive mechanisms to be induced by high temperatures. This could affect their ability to balance the overall loss of reproductive outcome in warm environments, and therefore furnish an advantage to their offspring under environmental fluctuations. In the brook trout *Salvelinus fontinalis*, maternal and paternal temperatures modulate the methylation patterns in offspring which may drive their adaptation to predictable environments [97]. However, in this study, both females and males were exposed to cool and warm temperatures prior to fertilization, and their offspring was split and developed in both environments, development temperature having no effect on methylation. This could be in line with our finding of no effect of embryo development temperature on hatching success. It appears that the conditions during gametogenesis play a key role. Heat shock proteins are continuously expressed during spermatogenesis and are known to play a pivotal role in sperm development. It has in fact been proposed that adaptations to different thermal environments could be adaptively modulated during gonadal development so that sperm function can better withstand future challenges and be effective at reproduction in a warmer environment [98]. The fact that we detected such changes when exposing gametes alone, prior to their activation and after gametogenesis, suggests that such processes may not be strictly parentally transmitted adaptations, but that that gametes alone could be involved.

## 5. Conclusion

Our results highlight opposite effects of thermal regimes on eggs and sperm, where a warmer environment was beneficial for eggs but detrimental for sperm. These specific disadvantageous environments experienced by gametes hampered hatching success and the total number of offspring. The effects on the overall reproductive output were predominantly influenced by the conditions experienced pre-fertilization and priming gametes to future temperatures can benefit the offspring.

Our findings revealed small changes in hatching time and synchrony, but not in overall reproductive output as a consequence of gamete priming to future embryonic environmental conditions, and suggest that populations might not be able to effectively buffer the effects of unpredictable temperature fluctuations on gametes. Moreover, we highlight that salmon males could be the most affected under such climatic fluctuations and that the detrimental effect of warm temperatures on male gametes alone is enough to reduce the overall reproductive outcome. From an applied angle, we suggest that the differential storage of male and female gametes prior to fertilization protocols could be used to ameliorate the reproductive outcome within the hatcheries by increasing their productive efficiency and thus their sustainability.

**Ethics.** Gametes, zygotes and alevins prior to exogenous feeding are exempted from the Norwegian Regulation on Animal Experimentation. Therefore, ethical approval by the Norwegian Animal Research Authority (NARA) was not needed for these experimental protocols. Nonetheless, welfare and use of experimental animals were performed in strict accordance with the Norwegian Animal Welfare Act. Additionally, the personnel involved in the experimental procedures had undergone the training which is mandatory when experimenting with animals included in the Animal Welfare Act and was approved by the Norwegian Food Safety Authority. Finally, the protocols used in these experiments were also approved by the Animal Welfare & Ethical Review Board at the University of East Anglia in agreement with UK and European law.

**Data accessibility.** All the material, the raw data files and the script have been uploaded on Dryad: <https://doi.org/10.5061/dryad.wstjq2s9> [99]. A version of the Rscript has been made available on the Dryad repository.

Supplementary material is available online [100].

**Declaration of AI use.** We have not used AI-assisted technologies in creating this article.

**Authors' contributions.** M.G.: data curation, formal analysis, investigation, methodology, validation, visualization, writing—original draft, writing—review and editing; M.F.S.: conceptualization, funding acquisition, investigation, project administration, resources, writing—review and editing; K.A.G.: funding acquisition, project administration, resources, supervision, writing—review and editing; R.V.: supervision, validation, writing—review and editing; L.D.: formal analysis, investigation, methodology; D.M.: formal analysis, investigation, writing—review and editing; S.I.: methodology, supervision, validation, writing—review and editing; M.J.G.G.: conceptualization, funding acquisition, methodology, project administration, resources, supervision, writing—original draft.

All authors gave final approval for publication and agreed to be held accountable for the work performed therein.

**Conflict of interest declaration.** We declare we have no competing interests.

**Funding.** This research was supported by grants available to M.J.G.G. from the UK Research and Innovation Biotechnology and Biological Sciences Research Council and by grants available to K.A.G. and M.F.S. and financed by the Norwegian Department for Industry and Fisheries. The Open Access funding was provided by the University of East Anglia.

**Acknowledgements.** The authors would like to dedicate this work to Matthew J. Gage, who sadly passed away while this work was being written, but whose valuable contribution heavily influenced its framework. Nevertheless, Matthew's teachings, as a great scientist and exemplar human being, have indeed marked our existence and have further boosted our devotion to science and to pursue a full and stimulating life path. We would like to thank Ivar Helge for the technical support in the rearing facilities as well as Department Manager Ragnar Nortvedt, the estate staff, facilities co-workers and broader research community at the Matre Research Station for their hospitality and kindness. We also thank Kris Sales and Edward Ivmev Cook for the valuable contributions and suggested improvements of the R-Scripts in earlier versions of the manuscript.

## References

- Gaitán-Espitia JD, Hobday AJ. 2021 Evolutionary principles and genetic considerations for guiding conservation interventions under climate change. *Glob. Change Biol.* **27**, 475–488. (doi:10.1111/GCB.15359)
- Hoffmann AA, Sgrò CM. 2011 Climate change and evolutionary adaptation. *Nature* **470**, 479–485. (doi:10.1038/nature09670)
- Burrows MT *et al.* 2011 The pace of shifting climate in marine and terrestrial ecosystems. *Science* **334**, 652–655. (doi:10.1126/SCIENCE.1210288/SUPPL\_FILE/BURROWS.SOM.PDF)
- Bell G, Gonzalez A. 2009 Evolutionary rescue can prevent extinction following environmental change. *Ecol. Lett.* **12**, 942–948. (doi:10.1111/j.1461-0248.2009.01350.x)
- McGuigan K, Hoffmann AA, Sgrò CM. 2021 How is epigenetics predicted to contribute to climate change adaptation? What evidence do we need? *Phil. Trans. R. Soc. B* **376**, 20200119. (doi:10.1098/RSTB.2020.0119)
- Chevin LM, Lande R. 2010 When do adaptive plasticity and genetic evolution prevent extinction of a density-regulated population? *Evolution (N Y)* **64**, 1143–1150. (doi:10.1111/j.1558-5646.2009.00875.x)
- Agrawal AA. 2001 Transgenerational consequences of plant responses to herbivory: an adaptive maternal effect? *Am. Nat.* **157**, 555–569. (doi:10.1086/319932/ASSET/IMAGES/LARGE/FG7.JPEG)
- Harmon EA, Pfennig DW, Emily Harmon CA. 2021 Evolutionary rescue via transgenerational plasticity: evidence and implications for conservation. *Evol. Dev.* **23**, 292–307. (doi:10.1111/ede.12373)
- Mousseau TA, Fox CW. 1998 The adaptive significance of maternal effects. *Trends Ecol. Evol.* **13**, 403–407. (doi:10.1016/S0169-5347(98)01472-4)
- Burgess SC, Marshall DJ. 2014 Adaptive parental effects: the importance of estimating environmental predictability and offspring fitness appropriately. *Oikos* **123**, 769–776. (doi:10.1111/OIK.01235)
- Chirgwin E, Marshall DJ, Sgrò CM, Monro K. 2018 How does parental environment influence the potential for adaptation to global change? *Proc. R. Soc. B* **285**, 20181374. (doi:10.1098/RSPB.2018.1374)

12. Silva WTA, Otto SP, Immler S. 2021 Evolution of plasticity in production and transgenerational inheritance of small RNAs under dynamic environmental conditions. *PLoS Genet.* **17**, e1009581. (doi:10.1371/journal.pgen.1009581)
13. Fox CW, Thakar MS, Mousseau TA. 1997 Egg size plasticity in a seed beetle: an adaptive maternal effect. *Am. Nat.* **149**, 149–163. (doi:10.1086/285983)
14. Sales K *et al.* 2018 Experimental heatwaves compromise sperm function and cause transgenerational damage in a model insect. *Nat. Commun.* **9**, 4771. (doi:10.1038/s41467-018-07273-z)
15. Vasudeva R, Sutter A, Sales K, Dickinson ME, Lumley AJ, Gage MJG. 2019 Adaptive thermal plasticity enhances sperm and egg performance in a model insect. *Elife* **8**, e49452. (doi:10.7554/eLife.49452)
16. Bernal MA, Ravasi T, Rodgers GG, Munday PL, Donelson JM. 2022 Plasticity to ocean warming is influenced by transgenerational, reproductive, and developmental exposure in a coral reef fish. *Evol. Appl.* **15**, 249–261. (doi:10.1111/EVA.13337)
17. Salinas S, Munch SB. 2012 Thermal legacies: transgenerational effects of temperature on growth in a vertebrate. *Ecol. Lett.* **15**, 159–163. (doi:10.1111/J.1461-0248.2011.01721.X)
18. Harris RM *et al.* 2018 Biological responses to the press and pulse of climate trends and extreme events. *Nat. Clim. Change* **8**, 579–587. (doi:10.1038/s41558-018-0187-9)
19. Perkins SE, Alexander LV, Nairn JR. 2012 Increasing frequency, intensity and duration of observed global heatwaves and warm spells. *Geophys. Res. Lett.* **39**, 20714. (doi:10.1029/2012GL053361)
20. Zhang R, Sun C, Zhu J, Zhang R, Li W. 2020 Increased European heat waves in recent decades in response to shrinking Arctic sea ice and Eurasian snow cover. *NPJ Clim. Atmos. Sci.* **3**, 7. (doi:10.1038/s41612-020-0110-8)
21. Russo S, Sillmann J, Fischer EM. 2015 Top ten European heatwaves since 1950 and their occurrence in the coming decades. *Environ. Res. Lett.* **10**, 124003. (doi:10.1088/1748-9326/10/12/124003)
22. van Vliet MTH, Franssen WHP, Yearsley JR, Ludwig F, Haddeland L, Lettenmaier DP, Kabat P. 2013 Global river discharge and water temperature under climate change. *Glob. Environ. Change* **23**, 450–464. (doi:10.1016/j.gloenvcha.2012.11.002)
23. Beever EA, Hall LE, Varner J, Loosen AE, Dunham JB, Gahl MK, Smith FA, Lawler JJ. 2017 Behavioral flexibility as a mechanism for coping with climate change. *Front. Ecol. Environ.* **15**, 299–308. (doi:10.1002/fee.1502)
24. Hraoui G, Breton S, Miron G, Boudreau LH, Hunter-Manseau F, Pichaud N. 2021 Mitochondrial responses towards intermittent heat shocks in the eastern oyster, *Crassostrea virginica*. *J. Exp. Biol.* **224**, jeb242745. (doi:10.1242/jeb.242745)
25. Menail HA, Cormier SB, ben Youssef M, Jørgensen LB, Vickruck JL, Morin P, Boudreau LH, Pichaud N. 2022 Flexible thermal sensitivity of mitochondrial oxygen consumption and substrate oxidation in flying insect species. *Front. Physiol.* **13**, 897174. (doi:10.3389/fphys.2022.897174)
26. Cooper CE. 2017 Endocrinology of osmoregulation and thermoregulation of Australian desert tetrapods: a historical perspective. *Gen. Comp. Endocrinol.* **244**, 186–200. (doi:10.1016/j.ygcen.2015.10.003)
27. Walsh BS, Parratt SR, Hoffmann AA, Atkinson D, Snook RR, Bretman A, Price TARR. 2019 The impact of climate change on fertility. *Trends Ecol. Evol.* **34**, 249–259. (doi:10.1016/j.tree.2018.12.002)
28. Parratt SR, Walsh BS, Metelmann S, White N, Manser A, Bretman AJ, Hoffmann AA, Snook RR, Price TA. 2021 Temperatures that sterilize males better match global species distributions than lethal temperatures. *Nat. Clim. Change* **11**, 481–484. (doi:10.1038/s41558-021-01047-0)
29. Pérez-Crespo M, Pintado B, Gutiérrez-Adán A. 2008 Scrotal heat stress effects on sperm viability, sperm DNA integrity, and the offspring sex ratio in mice. *Mol. Reprod. Dev.* **75**, 40–47. (doi:10.1002/mrd.20759)
30. Vollmer JH, Sarup P, Kærsgaard CW, Dahlgård J, Loeschke V. 2004 Heat and cold-induced male sterility in *Drosophila buzzatii*: genetic variation among populations for the duration of sterility. *Heredity (Edinb)* **92**, 257–262. (doi:10.1038/sj.hdy.6800405)
31. Sage TL, Bagha S, Lundsgaard-Nielsen V, Branch HA, Sultmanis S, Sage RF. 2015 The effect of high temperature stress on male and female reproduction in plants. *Field Crops Res.* **182**, 30–42. (doi:10.1016/j.fcr.2015.06.011)
32. Paupière MJ, van Heusden AW, Bovy AG. 2014 The metabolic basis of pollen thermo-tolerance: perspectives for breeding. *Metabolites* **4**, 889–920. (doi:10.3390/metab04040889)
33. Paxton CW, Baria MVB, Weis VM, Harii S. 2016 Effect of elevated temperature on fecundity and reproductive timing in the coral *Acropora digitifera*. *Zygote* **24**, 511–516. (doi:10.1017/S0967199415000477)
34. Porcelli D, Gaston KJ, Butlin RK, Snook RR. 2017 Local adaptation of reproductive performance during thermal stress. *J. Evol. Biol.* **30**, 422–429. (doi:10.1111/jeb.13018)
35. Batista MRD, Rocha FB, Klaczko LB. 2018 Altitudinal distribution of two sibling species of the *Drosophila tripunctata* group in a preserved tropical forest and their male sterility thermal thresholds. *J. Therm. Biol.* **71**, 69–73. (doi:10.1016/j.jtherbio.2017.10.019)
36. Vasudeva R, Deeming DC, Eady PE. 2014 Developmental temperature affects the expression of ejaculatory traits and the outcome of sperm competition in *Callosobruchus maculatus*. *J. Evol. Biol.* **27**, 1811–1818. (doi:10.1111/jeb.12431)
37. Breckels RD, Neff BD. 2014 Rapid evolution of sperm length in response to increased temperature in an ectothermic fish. *Evol. Ecol.* **28**, 521–533. (doi:10.1007/s10682-014-9692-0)
38. Dadras H, Dzyuba B, Cosson J, Golpour A, Siddique MAM, Linhart O. 2017 Effect of water temperature on the physiology of fish spermatozoon function: a brief review. *Aquacult. Res.* **48**, 729–740. (doi:10.1111/are.13049)
39. Peña ST, Stone F, Gummow B, Parker AJ, Paris DBBP. 2019 Tropical summer induces DNA fragmentation in boar spermatozoa: implications for evaluating seasonal infertility. *Reprod. Fertil. Dev.* **31**, 590–601. (doi:10.1071/RD18159)
40. Kekäläinen J, Oskoei P, Janhunen M, Koskinen H, Kortet R, Huuskonen H. 2018 Sperm pre-fertilization thermal environment shapes offspring phenotype and performance. *J. Exp. Biol.* **221**, jeb181412. (doi:10.1242/jeb.181412)
41. Weber SB, Blount JD, Godley BJ, Witt MJ, Broderick AC. 2011 Rate of egg maturation in marine turtles exhibits 'universal temperature dependence'. *J. Anim. Ecol.* **80**, 1034–1041. (doi:10.1111/J.1365-2656.2011.01850.X)
42. Rukke BA, Hage M, Aak A. 2017 Mortality, fecundity and development among bed bugs (*Cimex lectularius*) exposed to prolonged, intermediate cold stress. *Pest Manag. Sci.* **73**, 838–843. (doi:10.1002/ps.4504)
43. Vasudeva R. 2023 Experimental evidence for stronger impacts of larval but not adult rearing temperature on female fertility and lifespan in a seed beetle. *Evol. Ecol.* **37**, 545–567. (doi:10.1007/S10682-022-10227-Z/FIGURES/5)
44. de Rensis F, Lopez-Gatius F, García-Ispierto I, Morini G, Scaramuzzi RJ. 2017 Causes of declining fertility in dairy cows during the warm season. *Theriogenology* **91**, 145–153. (doi:10.1016/J.THERIOGENOLOGY.2016.12.024)
45. Zheng J, Cheng X, Hoffmann AA, Zhang B, Ma CS. 2017 Are adult life history traits in oriental fruit moth affected by a mild pupal heat stress? *J. Insect. Physiol.* **102**, 36–41. (doi:10.1016/j.jinsphys.2017.09.004)
46. Kekäläinen J, Evans JP. 2018 Gamete-mediated mate choice: towards a more inclusive view of sexual selection. *Proc. R. Soc. B* **285**, 20180836. (doi:10.1098/rspb.2018.0836)
47. Evans JP, Wilson AJ, Pilastro A, Garcia-Gonzalez F. 2019 Ejaculate-mediated paternal effects: evidence, mechanisms and evolutionary implications. *Reproduction* **157**, R109–R126. (doi:10.1530/REP-18-0524)
48. Lymbery RA, Kennington WJ, Evans JP. 2021 The thermal environment of sperm affects offspring success: a test of the anticipatory paternal effects hypothesis in the blue mussel. *Biol. Lett.* **17**, 20210213. (doi:10.1098/RSBL.2021.0213)
49. Crean AJ, Immler S. 2021 Evolutionary consequences of environmental effects on gamete performance. *Phil. Trans. R. Soc. B* **376**, 20200122. (doi:10.1098/rstb.2020.0122)
50. Pankhurst NW, King HR. 2010 Temperature and salmonid reproduction: implications for aquaculture. *J. Fish Biol.* **76**, 69–85. (doi:10.1111/J.1095-8649.2009.02484.X)
51. Pankhurst NW, King HR, Anderson K, Elizur A, Pankhurst PM, Ruff N. 2011 Thermal impairment of reproduction is differentially expressed in maiden and repeat spawning Atlantic salmon. *Aquaculture* **316**, 77–87. (doi:10.1016/j.aquaculture.2011.03.009)
52. Thorstad EB *et al.* 2021 Atlantic salmon in a rapidly changing environment: facing the challenges of reduced marine survival and climate change. *Aquat. Conserv. Mar. Freshw. Ecosyst.* **31**, 2654–2665. (doi:10.1002/aqc.3624)

53. Albright R, Mason B. 2013 Projected near-future levels of temperature and pCO<sub>2</sub> reduce coral fertilization success. *PLoS ONE* **8**, e56468. (doi:10.1371/journal.pone.0056468)
54. Keshavmurthy S, Fontana S, Mezaki T, Del Caño González L, Chen CA. 2014 Doors are closing on early development in corals facing climate change. *Sci. Rep.* **4**, 5633. (doi:10.1038/srep05633)
55. Dadras H, Sampels S, Golpour A, Dzyuba V, Cosson J, Dzyuba B. 2017 Analysis of common carp *Cyprinus carpio* sperm motility and lipid composition using different in vitro temperatures. *Anim. Reprod. Sci.* **180**, 37–43. (doi:10.1016/j.anireprosci.2017.02.011)
56. Fenkes M, Shiels HA, Fitzpatrick JL, Nudds RL. 2016 The potential impacts of migratory difficulty, including warmer waters and altered flow conditions, on the reproductive success of salmonid fishes. *Comp. Biochem. Physiol. A Mol. Integr. Physiol.* **193**, 11–21. (doi:10.1016/j.cbpa.2015.11.012)
57. Fenkes M, Fitzpatrick JL, Ozolina K, Shiels HA, Nudds RL. 2017 Sperm in hot water: direct and indirect thermal challenges interact to impact on brown trout sperm quality. *J. Exp. Biol.* **220**, 2513–2520 (doi:10.1242/jeb.156018)
58. Lahnsteiner F, Mansour N. 2012 The effect of temperature on sperm motility and enzymatic activity in brown trout *Salmo trutta*, burbot *Lota lota* and grayling *Thymallus thymallus*. *J. Fish Biol.* **81**, 197–209. (doi:10.1111/j.1095-8649.2012.03323.x)
59. Lane M, McPherson NO, Fullston T, Spillane M, Sandeman L, Kang WX, Zander-Fox DL. 2014 Oxidative stress in mouse sperm impairs embryo development, fetal growth and alters adiposity and glucose regulation in female offspring. *PLoS ONE* **9**, e100832. (doi:10.1371/journal.pone.0100832)
60. Menezes YJR, Silvestris E, Dale B, Elder K. 2016 Oxidative stress and alterations in DNA methylation: two sides of the same coin in reproduction. *Reprod. Biomed. Online* **33**, 668–683. (doi:10.1016/j.rbmo.2016.09.006)
61. Yeates SE, Einum S, Fleming IA, Holt WW, Gage MJG. 2014 Assessing risks of invasion through gamete performance: farm Atlantic salmon sperm and eggs show equivalence in function, fertility, compatibility and competitiveness to wild Atlantic salmon. *Evol. Appl.* **7**, 493–505. (doi:10.1111/EVA.12148)
62. Gage MJG, Macfarlane CP, Yeates SE, Ward RG, Searle JB, Parker GA. 2004 Spermatozoal traits and sperm competition in Atlantic salmon. *Curr. Biol.* **14**, 44–47. (doi:10.1016/j.cub.2003.12.028)
63. Jonsson B, Jonsson N. 2009 A review of the likely effects of climate change on anadromous Atlantic salmon *Salmo salar* and brown trout *Salmo trutta*, with particular reference to water temperature and flow. *J. Fish Biol.* **75**, 2381–2447. (doi:10.1111/j.1095-8649.2009.02380.x)
64. Crawley MJ. 2012 *The R book*, vol. 8, 2nd edn. Chichester, UK: John Wiley & Sons.
65. Thomas RJ, Lello J. 2015 *Data analysis with R statistical software: a guidebook for scientists*. Eco-explore.
66. Pinsky ML, Eikeset AM, McCauley DJ, Payne JL, Sunday JM. 2019 Greater vulnerability to warming of marine versus terrestrial ectotherms. *Nature* **569**, 108–111. (doi:10.1038/s41586-019-1132-4)
67. Gasparini C, Lu CC, Dingemans NJ, Tuni C. 2018 Paternal-effects in a terrestrial ectotherm are temperature dependent but no evidence for adaptive effects. *Funct. Ecol.* **32**, 1011–1021. (doi:10.1111/1365-2435.13022)
68. Adriaenssens B, van Damme R, Seebacher F, Wilson RS. 2012 Sex cells in changing environments: can organisms adjust the physiological function of gametes to different temperatures? *Glob. Change Biol.* **18**, 1797–1803. (doi:10.1111/j.1365-2486.2012.02672.x)
69. Alavioon G, Hotzy C, Nakhro K, Rudolf S, Scofield DG, Zajitschek S, Maklakov AA, Immler S. 2017 Haploid selection within a single ejaculate increases offspring fitness. *Proc. Natl Acad. Sci. USA* **114**, 8053–8058. (doi:10.1073/pnas.1705601114)
70. Dadras H, Dzyuba V, Cosson J, Golpour A, Dzyuba B. 2016 The in vitro effect of temperature on motility and antioxidant response of common carp *Cyprinus carpio* spermatozoa. *J. Therm. Biol.* **59**, 64–68. (doi:10.1016/j.jtherbio.2016.05.003)
71. Crean AJ, Dwyer JM, Marshall DJ. 2013 Adaptive paternal effects? Experimental evidence that the paternal environment affects offspring performance. *Ecology* **94**, 2575–2582. (doi:10.1890/13-0184.1)
72. Zajitschek S, Hotzy C, Zajitschek F, Immler S. 2014 Short-term variation in sperm competition causes sperm-mediated epigenetic effects on early offspring performance in the zebrafish. *Proc. Biol. Sci.* **281**, 20140422. (doi:10.1098/RSPB.2014.0422)
73. Reinhardt K, Dobler R, Abbott J. 2015 An ecology of sperm: sperm diversification by natural selection. *Ann. Rev. Ecol. Syst.* **46**, 435–459. (doi:10.1146/ANNUREV-ECOLSYS-120213-091611)
74. Alavi SMH, Cosson J. 2005 Sperm motility in fishes. I. Effects of temperature and pH: a review. *Cell Biol. Int.* **29**, 101–110. (doi:10.1016/J.CELLBI.2004.11.021)
75. Foo SA, Byrne M. 2017 Marine gametes in a changing ocean: impacts of climate change stressors on fecundity and the egg. *Mar. Environ. Res.* **128**, 12–24. (doi:10.1016/j.marenvres.2017.02.004)
76. Fleming IA. 1996 Reproductive strategies of Atlantic salmon: ecology and evolution. *Rev. Fish Biol. Fish.* **6**, 379–416. (doi:10.1007/BF00164323)
77. Taborsky M. 2008 Alternative reproductive tactics in fish. In *Alternative reproductive tactics: an integrative approach* (eds RF Oliveira, M Taborsky, HJ Brockmann), pp. 251–299. Cambridge, UK: Cambridge University Press. (doi:10.1017/CBO9780511542602.011)
78. Kustra MC, Alonzo SH. 2020 Sperm and alternative reproductive tactics: a review of existing theory and empirical data. *Phil. Trans. R. Soc. B* **375**, 20200075. (doi:10.1098/rstb.2020.0075)
79. Garant D, Dodson JJ, Bernatchez L. 2003 Differential reproductive success and heritability of alternative reproductive tactics in wild Atlantic Salmon (*Salmo salar* L.). *Evolution (N Y)* **57**, 1133–1141. (doi:10.1111/J.0014-3820.2003.TB00322.X)
80. Vlačić T, Forsberg LA, Järvi T. 2010 Sperm competition between alternative reproductive tactics of the Atlantic salmon in vitro. *Aquaculture* **302**, 265–269. (doi:10.1016/j.aquaculture.2010.02.024)
81. Butts IAE, Prokopchuk G, Kašpar V, Cosson J, Pitcher TE. 2017 Ovarian fluid impacts flagellar beating and biomechanical metrics of sperm between alternative reproductive tactics. *J. Exp. Biol.* **220**, 2210–2217. (doi:10.1242/jeb.154195)
82. Danchin É, Charmantier A, Champagne FA, Mesoudi A, Pujol B, Blanchet S. 2011 Beyond DNA: integrating inclusive inheritance into an extended theory of evolution. *Nat. Rev. Genet.* **12**, 475–486. (doi:10.1038/nrg3028)
83. Jenkins TG, Carrell DT. 2012 The sperm epigenome and potential implications for the developing embryo. *Reproduction* **143**, 727. (doi:10.1530/REP-11-0450)
84. Danchin É. 2013 Avatars of information: towards an inclusive evolutionary synthesis. *Trends Ecol. Evol.* **28**, 351–358. (doi:10.1016/J.TREE.2013.02.010)
85. Castillo J, Amaral A, Oliva R. 2014 Sperm nuclear proteome and its epigenetic potential. *Andrology* **2**, 326–338. (doi:10.1111/j.2047-2927.2013.00170.x)
86. Chen Q, Yan W, Duan E. 2016 Epigenetic inheritance of acquired traits through sperm RNAs and sperm RNA modifications. *Nat. Rev. Genet.* **17**, 733–743. (doi:10.1038/nrg.2016.106)
87. Crean AJ, Bonduriansky R. 2014 What is a paternal effect? *Trends Ecol. Evol.* **29**, 554–559. (doi:10.1016/j.tree.2014.07.009)
88. Crean AJ, Adler MI, Bonduriansky R. 2016 Seminal fluid and mate choice: new predictions. *Trends Ecol. Evol.* **31**, 253–255. (doi:10.1016/J.TREE.2016.02.004)
89. Immler S. 2018 The sperm factor: paternal impact beyond genes. *Heredity (Edinb)* **121**, 239–247. (doi:10.1038/S41437-018-0111-0)
90. Angilletta MJ, Niewiarowski PH, Navas CA. 2002 The evolution of thermal physiology in ectotherms. *J. Therm. Biol.* **27**, 249–268. (doi:10.1016/S0306-4565(01)00094-8)
91. Beacham TD, Murray CB. 1990 Temperature, egg size, and development of embryos and alevins of five species of Pacific salmon: a comparative analysis. *Trans. Am. Fish Soc.* **119**, 927–945. (doi:10.1577/1548-8659(1990)119<0927:tesado>2.3.co;2)
92. Berg OK, Moen V. 1999 Inter- and intrapopulation variation in temperature sum requirements at hatching in Norwegian Atlantic salmon. *J. Fish Biol.* **54**, 636–647. (doi:10.1111/J.1095-8649.1999.TB00642.X)
93. Cutts CJ, Brembs B, Metcalfe NB, Taylor AC. 1999 Prior residence, territory quality and life-history strategies in juvenile Atlantic salmon (*Salmo salar* L.). *J. Fish Biol.* **55**, 784–794. (doi:10.1111/j.1095-8649.1999.tb00717.x)

94. Solberg MF, Fjellidal PG, Nilsen F, Glover KA, Favneboe Solberg M, Nilsen F, Glover KA. 2014 Hatching time and alevin growth prior to the onset of exogenous feeding in farmed, wild and hybrid Norwegian Atlantic salmon. *PLoS ONE* **9**, e113697. (doi:10.1371/journal.pone.0113697)
95. Colbert PL, Spencer RJ, Janzen FJ. 2010 Mechanism and cost of synchronous hatching. *Funct. Ecol.* **24**, 112–121. (doi:10.1111/J.1365-2435.2009.01602.X)
96. di Cecco GJ, Gouhier TC. 2018 Increased spatial and temporal autocorrelation of temperature under climate change. *Sci. Rep.* **8**, 14850. (doi:10.1038/s41598-018-33217-0)
97. Venney CJ, Wellband KW, Normandeau E, Houle C, Garant D, Audet C, Bernatchez L. 2022 Thermal regime during parental sexual maturation, but not during offspring rearing, modulates DNA methylation in brook charr (*Salvelinus fontinalis*). *Proc. Biol. Sci.* **289**, 20220670. (doi:10.1098/RSPB.2022.0670)
98. Dunn SR, Pernice M, Green K, Hoegh-Guldberg O, Dove SG. 2012 Thermal stress promotes host mitochondrial degradation in symbiotic cnidarians: are the batteries of the reef going to run out? *PLoS ONE* **7**, 39024. (doi:10.1371/journal.pone.0039024)
99. Graziano M, Solberg MF, Glover KA, Vasudeva R, Dyrhovden L, Murray D, Immler S, Gage MJG. 2023 Pre-fertilisation gamete thermal environment influences reproductive success, unmasking opposing sex-specific responses in Atlantic Salmon [Dataset]. *Dryad Digital Repository*. (doi:10.5061/dryad.wstjq2s9)
100. Graziano M, Solberg MF, Glover KA, Vasudeva R, Dyrhovden L, Murray D, Immler S, Gage MJG. 2023 Pre-fertilization gamete thermal environment influences reproductive success, unmasking opposing sex-specific responses in Atlantic salmon (*Salmo salar*). *Figshare*. (doi:10.6084/m9.figshare.c.6958228)