

RESEARCH

Open Access



Age- and sex-specific reference values of biventricular flow components and kinetic energy by 4D flow cardiovascular magnetic resonance in healthy subjects

Xiaodan Zhao¹, Ru-San Tan^{1,2,11}, Pankaj Garg³, Ping Chai^{4,5}, Shuang Leng^{1,2}, Jennifer Ann Bryant^{1,2,11}, Lynette L. S. Teo^{4,5}, Tee Joo Yeo^{4,5}, Marielle V. Fortier^{2,6,7}, Ting Ting Low⁴, Ching Ching Ong^{4,5}, Shuo Zhang⁸, Rob J. Van der Geest⁹, John C. Allen², Teng Hong Tan^{2,6}, James W. Yip^{4,5}, Ju Le Tan^{1,2,11}, Marina Hughes³, Sven Plein¹⁰, Jos J. M. Westenberg⁹ and Liang Zhong^{1,2*}

Abstract

Background Advances in four-dimensional flow cardiovascular magnetic resonance (4D flow CMR) have allowed quantification of left ventricular (LV) and right ventricular (RV) blood flow. We aimed to (1) investigate age and sex differences of 4D flow CMR-derived LV and RV relative flow components and kinetic energy (KE) parameters indexed to end-diastolic volume (KE_{EDV}) in healthy subjects; and (2) assess the effects of age and sex on these parameters.

Methods We performed 4D flow analysis in 163 healthy participants (42% female; mean age 43 ± 13 years) of a prospective registry study (NCT03217240) who were free of cardiovascular diseases. Relative flow components (direct flow, retained inflow, delayed ejection flow, residual volume) and multiple phasic KE_{EDV} (global, peak systolic, average systolic, average diastolic, peak E-wave, peak A-wave) for both LV and RV were analysed.

Results Compared with men, women had lower median LV and RV residual volume, and LV peak and average systolic KE_{EDV} , and higher median values of RV direct flow, RV global KE_{EDV} , RV average diastolic KE_{EDV} , and RV peak E-wave KE_{EDV} . ANOVA analysis found there were no differences in flow components, peak and average systolic, average diastolic and global KE_{EDV} for both LV and RV across age groups. Peak A-wave KE_{EDV} increased significantly ($r = 0.458$ for LV and 0.341 for RV), whereas peak E-wave KE_{EDV} ($r = -0.355$ for LV and -0.318 for RV), and KE_{EDV} E/A ratio ($r = -0.475$ for LV and -0.504 for RV) decreased significantly, with age.

Conclusion These data using state-of-the-art 4D flow CMR show that biventricular flow components and kinetic energy parameters vary significantly by age and sex. Age and sex trends should be considered in the interpretation of quantitative measures of biventricular flow.

Clinical trial registration <https://www.clinicaltrials.gov>. Unique identifier: NCT03217240.

Keywords 4D flow, Kinetic energy, Flow components, Hemodynamics, Reference values

*Correspondence:

Liang Zhong

zhong.liang@nhcs.com.sg

Full list of author information is available at the end of the article



© The Author(s) 2023. **Open Access** This article is licensed under a Creative Commons Attribution 4.0 International License, which permits use, sharing, adaptation, distribution and reproduction in any medium or format, as long as you give appropriate credit to the original author(s) and the source, provide a link to the Creative Commons licence, and indicate if changes were made. The images or other third party material in this article are included in the article's Creative Commons licence, unless indicated otherwise in a credit line to the material. If material is not included in the article's Creative Commons licence and your intended use is not permitted by statutory regulation or exceeds the permitted use, you will need to obtain permission directly from the copyright holder. To view a copy of this licence, visit <http://creativecommons.org/licenses/by/4.0/>. The Creative Commons Public Domain Dedication waiver (<http://creativecommons.org/publicdomain/zero/1.0/>) applies to the data made available in this article, unless otherwise stated in a credit line to the data.

Introduction

Accurate assessment of intracardiac blood flow is important in the assessment and clinical management of various cardiovascular diseases [1, 2]. Two-dimensional (2D) phase-contrast cardiovascular magnetic resonance (CMR) flow is commonly used in clinical practice to quantify conventional flow parameters such as mean and peak velocities and stroke volume. However, 2D imaging with one-directional velocity encoding is unable to capture complex multi-directional blood flow patterns inside the heart and great vessels. Four-dimensional (4D) CMR flow imaging enables acquisition of comprehensive blood flow in three spatial directions simultaneously within a volume of interest resolved over time, and can provide new hemodynamic parameters such as flow components and kinetic energy (KE) beyond the conventional flow parameters. The clinical application of 4D flow CMR and the diagnostic potential of derived parameters for systolic and diastolic assessment have been comprehensively reviewed [1–3].

Kinetic energy is an important part of the external work of the heart that is performed to accelerate blood from the resting state to the current velocity. Research interest in left ventricular (LV) and right ventricular (RV) KE has burgeoned [4–15]. RV KE has been shown to be significantly increased in repaired tetralogy of Fallot (rTOF) [6–8] and decreased in pulmonary arterial hypertension (PAH) [10] compared with controls. Additionally, LV direct-flow average KE was shown to be a risk prognosticator in heart failure [11]. In contrast, RV flow components are rarely assessed, except in small cohorts of healthy subjects [4, 16], rTOF [8] and PAH [10, 17], where healthy subjects have been used as controls. Direct flow, which describes blood that enters and exits the ventricle in the analysed cardiac cycle, has been observed contributing to a larger portion of the end-diastolic volume (EDV) in RV than LV, and is of high importance when assessing RV diastolic function [18]. RV direct flow has been shown to be independently associated with RV dysfunction, adverse RV remodeling and exertional capacity in rTOF [8] and PAH [10], moreover, it had better discrimination than RV ejection fraction in terms of area under curve for adverse RV remodeling and intermediate and high risk exercise capacity [8, 10]. Therefore, a standardized set of 4D flow CMR-derived parameters, with well-defined references ranges will be necessary in order to better understand and quantify RV hemodynamic changes in various pathological states. The impact of age and sex on 4D flow CMR-derived LV flow components and KE has been investigated [12, 13] and so far, only one paper has specifically reported age-associated effects on RV KE parameters among healthy subjects (n=53) [14]. To our knowledge, no study has examined

the age- and sex associated changes on RV flow components nor specifically focused on the sex trends on RV kinetic energy in a large healthy cohort. Therefore, the current study aims to fill these knowledge gaps by investigating age- and sex trends of 4D flow CMR-derived biventricular relative flow components and KE parameters indexed to end-diastolic volume (KE_{iEDV}) in a large cohort of healthy subjects.

Methods

Study population

From June 2017 to February 2022, 185 healthy subjects aged 20–80 years were identified from a prospective study, which was a multicenter registry of healthy volunteers and patients with congenital heart disease or pulmonary hypertension (*ClinicalTrials.gov* identifier NCT03217240). The exclusion criteria for healthy subjects were history of: (1) non-cardiac illness with a life expectancy of less than 2 years; (2) previous heart, kidney, liver or lung transplantation; (3) history of any major medical problems, cardiovascular disease or cardiovascular risk factor (e.g., hypertension, diabetes or dyslipidemia) or significant renal or lung disease; (4) taking medications for cardiovascular disease or cardiovascular risk factor (e.g., for hypertension) and (5) smoking (defined as over 5 sticks per day or who had quit smoking for less than 12 months and had smoked over 5 sticks per day previously). Part of the study population was included in our previous publications to investigate the impact of age, sex and ethnicity on LV flow components and KE [12], and associations of 4D flow components and KE parameters with RV functional, remodeling and cardiopulmonary exercise testing (CPET) outcomes in rTOF patients [8] and PAH patients [10]. After excluding subjects with no/incomplete CMR scan (n=6), CMR scans without/incomplete 4D flow (n=12) and inadequate image quality for 4D flow analysis (n=4), 163 healthy subjects were included in the final analysis. All subjects were stratified by age into five groups: 20–29 years (n=31, M/F: 18/13), 30–39 years (n=45, M/F: 25/20), 40–49 years (n=38, M/F: 23/15), 50–59 years (n=29, M/F: 14/15) and 60–70 years (n=20, M/F: 15/5). This study had been approved by the Institutional Review Boards, and written informed consent was obtained from each subject.

Cardiac magnetic resonance protocol

CMR acquisition was performed on 3.0 T Ingenia (Philips Healthcare, Best, The Netherlands) and 1.5 T Magnetom Aera (Siemens Healthineers, Erlangen, Germany) scanners, as previously published [8, 10, 12]. Balanced steady-state free precession end-expiratory breath-hold cine images were acquired for the 2-, 3- and 4-chamber

long-axis and a stack of short-axis images covering the entire LV and RV, and reconstructed with a temporal resolution of 30 frames per heart cycle. Whole heart 4D flow CMR was acquired per guideline recommendations [19, 20]. Typical cine and 4D flow CMR acquisition parameters in different centers are provided in Additional file 1: Table S1.

Cardiac magnetic resonance image analysis

All CMR image analysis were performed at a core laboratory using commercial research software MASS (Version 2019EXP, Leiden University Medical Center, Leiden, The Netherlands).

Biventricular measurements

A semi-automated method based on artificial intelligence (AI) and subsequent manual inspection and corrections where needed was used to segment endocardial and epicardial borders in stacks of LV and RV short-axis images [21]. In our study cohort, manual adjustments of AI segmented contours in heart apex were performed in 32/163 (19.6%) cases. Papillary and trabecular muscles were included in the volume calculation. End-diastolic volume (EDV) and end-systolic volume (ESV) were defined respectively as maximal and minimal values of the volume curve. LV mass was estimated at end-diastole. LV mass and all volumetric parameters were indexed to body surface area (BSA).

4D flow error corrections

Correction for local velocity offset errors was applied prior to particle tracing. First, for images acquired on the Philips scanner, concomitant gradient correction and local phase offset correction was performed as provided by the scanner software. Second, for images acquired on the Siemens scanner, local velocity offset correction using a 2nd order static tissue plane fit method was performed in MASS. Third, the residual velocity offset errors for both scanners were further minimized by subtracting the median velocity within the LV myocardial region at the end-systolic (ES) moment for all voxels and at every time phase, in accordance with the study by Kamphuis et al. [22].

Biventricular 4D flow analysis

The analysis techniques and definitions of both LV and RV four flow components (direct flow, retained inflow, delayed ejection flow, residual volume) and KE parameters normalized to EDV (global, peak systole, average systole, average diastole, peak E-wave and peak A-wave KE_{iEDV}) have been described in previous publications [8, 10, 12]. Briefly, spatial misalignment between short-axis cine and 4D flow acquisitions was corrected by a

rigid registration using the open-source Elastix registration toolbox [23]. The particle tracking algorithm used fourth-order Runge–Kutta numerical integration with a time-step of one fifth of the temporal resolution of the 4D flow acquisition (i.e., 8 ms). The number of particles released was dependent on the LV and RV end-diastolic volume using a particle size of 3 mm×3 mm×3 mm. The positions of the particles were evaluated at the previous and subsequent ES phases, and the particle tracing results were visually reviewed to confirm the absence of any remaining offset errors. Particles located within the LV (or RV) and below the LV (or RV) basal plane were included in the flow component calculations.

Phasic endocardial and epicardial contours from LV and RV were used for flow component and KE analyses. The positions of the traced particles at ES were used to classify flow into four functional components [24, 25]: (1) direct flow: blood that enters and exits the ventricle in the analyzed cardiac cycle; (2) retained inflow: enters the ventricle but does not exit during the analyzed cycle; (3) delayed ejection flow: starts within the ventricle and exits during the analyzed cycle; and (4) residual volume: blood that remained in the ventricle for the duration of at least one full cardiac cycle. Each component volume was indexed to the total ventricular EDV (LV EDV for LV flow components, and RV EDV for RV flow components). For each volumetric element (voxel), KE was computed using the following formula:

$$KE = 1/2 \cdot \rho_{\text{blood}} \cdot V_{\text{voxel}} \cdot v_{\text{voxel}}^2,$$

where ρ_{blood} represents blood density (1.06 g/cm³); V_{voxel} , voxel volume; and v_{voxel} , velocity of the corresponding voxel. All KE parameters were normalized to EDV (KE_{iEDV}) and presented in $\mu\text{J}/\text{ml}$. KE_{iEDV} parameters at physiologically relevant epochs (global [entire cycle], systole, diastole) and cardiac cycle time points (peak systole, peak E-wave, peak A-wave) were extracted from the time-resolved KE_{iEDV} curve. Good reproducibility of 4D flow CMR-derived LV and RV parameters had been demonstrated in our previous study [8, 10, 12]. Examples of RV KE_{iEDV} curve in each of the five age groups are illustrated in Fig. 1. The corresponding videos of the four RV flow components with appropriate color legends for the whole cardiac cycle are provided in Additional file 2.

Statistical analysis

Data were analysed using SPSS (version 25.0, Chicago, IL, USA). Continuous variables were expressed as mean \pm standard deviation (SD) for normally distributed data or median (25th percentile, 75th percentile) for non-normally distributed data. The mean \pm SD representations for 4D flow parameters were also provided in the

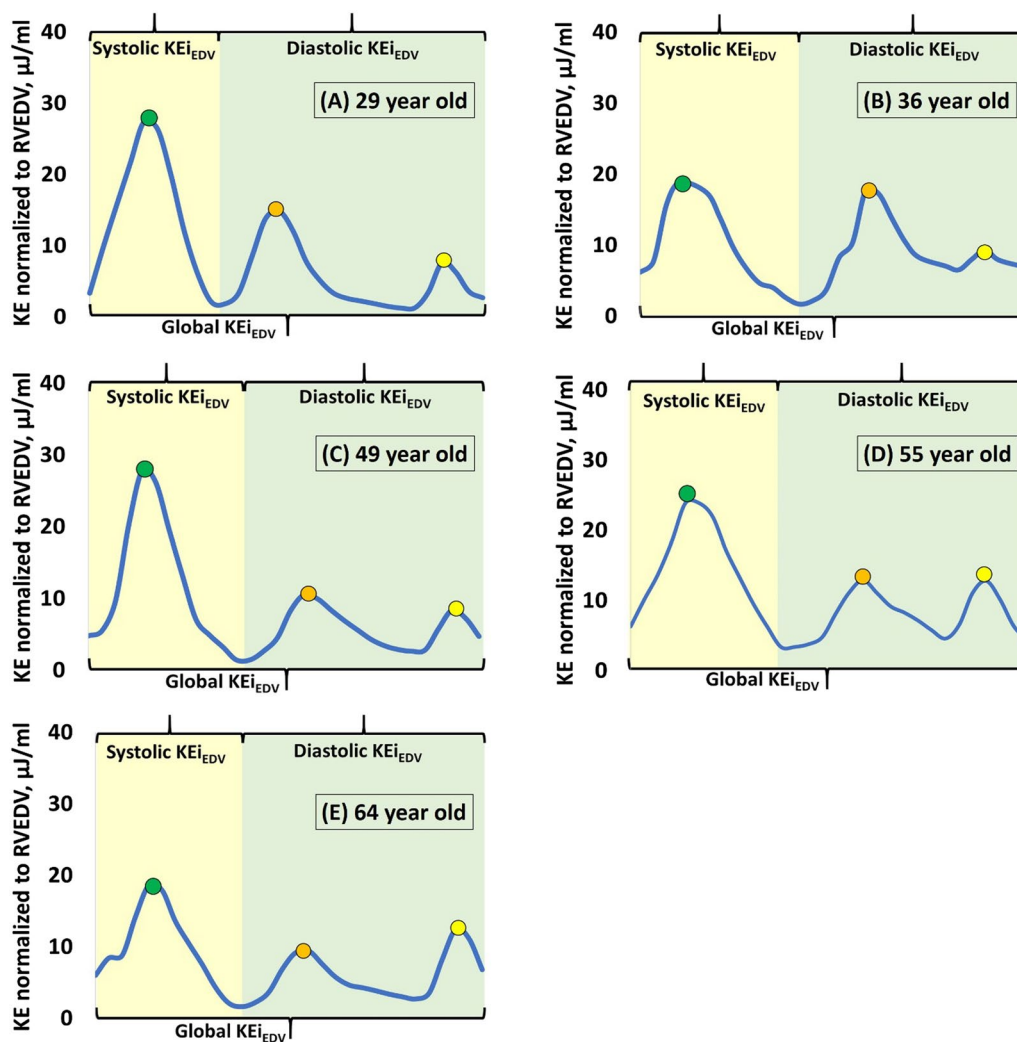


Fig. 1 Right ventricular (RV) kinetic energy (KE) curve normalized to RV end-diastolic volume (EDV) in **A** a 29-year-old normal subject, **B** a 36-year-old normal subject, **C** a 49-year-old normal subject, **D** a 55-year-old normal subject and **E** a 64-year-old normal subject. KE_{EDV} , KE normalized to RVEDV

supplemental tables to facilitate comparisons with previous findings and also provide reference values for future relevant studies. Comparison of means between two groups was analysed using two-sample *t* test for normally distributed data; Mann–Whitney U tests for non-normally distributed data; and Kruskal–Wallis (K–W) non-parametric one-way ANOVA for more than two groups with post-hoc pair-wise comparisons in the event of a significant K-W test with Bonferroni corrections where appropriate. The Chi-square test or Fisher’s exact test, as appropriate, were used for analysis of categorical variables. Bonferroni significance levels were calculated when comparing sex and age with biventricular 4D flow CMR parameters. For other results, only raw P-values were reported. Associations between continuous variables

were investigated using regression and correlation (Pearson). Statistical significance was declared at $P < 0.05$.

Results

Demographic characteristics and baseline CMR data

Demographics and LV and RV function measurements for all subjects and subjects stratified by sex are shown in Table 1. Among 163 subjects, the mean age was 43 ± 13 years with M/F: 95/68. Compared with men, women weighed less, were of shorter height, had lower systolic and diastolic blood pressures, BSA and body mass index; women also had smaller LV mass index, EDV index, ESV index, stroke volume (SV) index and smaller RVEDV/LVEDV ratio, and higher ejection fractions (EF) for both LV and RV (all $P < 0.05$). There were

Table 1 Demographics, flow components and kinetic energy (KE) parameters for the overall population, men and women

	All (n = 163)	Men (n = 95)	Women (n = 68)	<i>p</i> ^{1,2}
Demographics				
Age, years	43 ± 13	44 ± 13	42 ± 12	0.322
Gender, M/F	95/68	95/0	0/68	–
Weight, kg	65 ± 12	71 ± 10	56 ± 9	<0.001
Height, cm	167 ± 9	172 ± 7	160 ± 7	<0.001
Systolic blood pressure, mmHg	125 ± 16	129 ± 15	121 ± 17	0.002
Diastolic blood pressure, mmHg	76 ± 12	79 ± 11	73 ± 12	0.003
Body surface area, m ²	1.72 ± 0.19	1.83 ± 0.14	1.57 ± 0.14	<0.001
Body mass index, kg/m ²	23.1 ± 3.4	24.0 ± 3.4	21.8 ± 3.1	<0.001
Heart rate, bpm	73 ± 13	73 ± 14	73 ± 12	0.809
Ethnicity				0.529*
Chinese, n (%)	143 (87.7%)	84 (88.4%)	59 (86.8%)	–
Malay, n (%)	7 (4.3%)	5 (5.3%)	2 (2.9%)	–
Other, n (%)	13 (8%)	6 (6.3%)	7 (10.3%)	–
LV function				
LV mass index, g/m ²	47 ± 11	51 ± 12	42 ± 8	<0.001
LVEDV index, ml/m ²	71 ± 13	75 ± 12	65 ± 11	<0.001
LVESV index, ml/m ²	27 ± 9	29 ± 8	23 ± 8	<0.001
LVSV index, ml/m ²	44 ± 8	46 ± 7	42 ± 7	0.001
LV ejection fraction, %	63 ± 8	62 ± 7	65 ± 8	0.022
RV function				
RVEDV index, ml/m ²	77 ± 15	83 ± 14	69 ± 13	<0.001
RVESV index, ml/m ²	34 ± 10	38 ± 10	29 ± 8	<0.001
RVSV index, ml/m ²	43 ± 8	45 ± 8	40 ± 6	<0.001
RV ejection fraction, %	56 ± 7	55 ± 6	59 ± 6	<0.001
RVEDV/LVEDV ratio	1.09 ± 0.13	1.11 ± 0.12	1.07 ± 0.13	0.018
LV flow components ^a				
Direct flow, %	34 (29, 38)	33 (28, 37)	34 (31, 40)	0.132
Retained inflow, %	15 (12, 18)	14 (12, 17)	16 (14, 19)	0.041
Delayed ejection flow, %	17 (14, 20)	16 (13, 19)	17 (15, 22)	0.092
Residual volume, %	33 (29, 37)	35 (30, 39)	31 (27, 34)	<0.001
LV KE _{EDV} parameters ^a				
Global KE _{EDV} , μJ/ml	9.1 (7.5, 11.4)	9.0 (7.5, 11.3)	9.3 (7.6, 11.5)	0.894
Peak systolic KE _{EDV} , μJ/ml	18.3 (15.1, 22.9)	20.1 (16.0, 24.3)	16.6 (13.6, 20.4)	0.002
Average systolic KE _{EDV} , μJ/ml	10.2 (8.1, 12.6)	10.8 (8.8, 13.4)	9.2 (7.6, 11.3)	0.002
Average diastolic KE _{EDV} , μJ/ml	8.7 (6.8, 10.7)	8.3 (6.3, 10.3)	9.1 (7.3, 11.5)	0.054
Peak E-wave KE _{EDV} , μJ/ml	25.2 (19.0, 31.5)	23.7 (17.8, 30.2)	27.7 (22.7, 33.0)	0.010
Peak A-wave KE _{EDV} , μJ/ml	10.8 (6.8, 15.2)	11.3 (7.1, 15.9)	10.2 (6.8, 14.3)	0.543
KE _{EDV} E/A ratio	2.39 (1.40, 3.70)	2.10 (1.25, 3.70)	2.85 (1.65, 3.71)	0.060
RV flow components ^a				
Direct flow, %	35 (31, 40)	34 (30, 38)	38 (32, 42)	0.007
Retained inflow, %	17 (14, 20)	17 (14, 19)	17 (14, 20)	0.892
Delayed ejection flow, %	16 (13, 19)	15 (12, 18)	17 (13, 20)	0.043
Residual volume, %	30 (26, 37)	33 (28, 37)	27 (24, 35)	0.001
RV KE _{EDV} parameters ^a				
Global KE _{EDV} , μJ/ml	8.3 (6.8, 10.3)	7.5 (6.3, 9.8)	8.9 (7.6, 10.8)	0.005
Peak systolic KE _{EDV} , μJ/ml	21.3 (18.0, 27.4)	21.3 (18.4, 28.7)	21.2 (17.7, 27.2)	0.718
Average systolic KE _{EDV} , μJ/ml	12.0 (9.6, 14.3)	11.9 (9.1, 14.3)	12.4 (9.7, 14.4)	0.744
Average diastolic KE _{EDV} , μJ/ml	6.1 (4.8, 7.6)	5.6 (4.3, 7.5)	6.7 (5.7, 8.4)	<0.001

Table 1 (continued)

	All (n = 163)	Men (n = 95)	Women (n = 68)	<i>p</i> ^{1,2}
Peak E-wave KE _{iEDV} , μJ/ml	12.9 (9.5, 16.3)	11.9 (8.5, 14.9)	14.4 (11.3, 17.9)	<0.001
Peak A-wave KE _{iEDV} , μJ/ml	8.3 (5.7, 11.1)	8.2 (5.9, 11.2)	8.3 (5.2, 11.4)	0.996
KE _{iEDV} E/A ratio	1.41 (0.97, 2.47)	1.30 (0.93, 2.21)	1.68 (1.15, 2.64)	0.028

Data were represented as mean ± SD or *median (25th percentile, 75th percentile). EDV end-diastolic volume, ESV end-systolic volume, KE_{iEDV} KE normalized to EDV, LV left ventricle, RV right ventricle

**P* value from Fisher’s exact test; ¹*P* value from Mann–Whitney U-Test; ²Bonferroni significance levels for LV flow components, LV KE_{iEDV} parameters, RV flow components and RV KE_{iEDV} parameters are calculated as 0.05/4 = 0.0125; 0.05/7 = 0.007; 0.05/4 = 0.0125 and 0.05/7 = 0.007, respectively. Bold values denote statistical significance

no significant differences in age and heart rate between men and women.

Reference values of LV and RV 4D flow parameters

Median values of four flow components (direct flow, retained inflow, delayed ejection flow and residual volume) were 34%, 15%, 17% and 33% for LV; and 35%, 17%, 16% and 30% for RV. Median global, average systolic and average diastolic KE_{iEDV} were 9.1 μJ/ml, 10.2 μJ/ml, 8.7 μJ/ml for LV and 8.3 μJ/ml, 12.0 μJ/ml, 6.1 μJ/ml for RV, respectively (Table 1). Median peak systolic, peak E-wave, peak A-wave, and KE_{iEDV} E/A ratio were 18.3 μJ/ml,

25.2 μJ/ml, 10.8 μJ/ml and 2.39 for LV, and 21.3 μJ/ml, 12.9 μJ/ml, 8.3 μJ/ml and 1.41 for RV, respectively (Table 1). Mean ± SD representations of LV and RV 4D flow parameters for all subjects can be found in Additional file 1: Table S2.

Sex differences of LV and RV 4D flow parameters

Women had significantly lower LV and RV residual volume, and higher RV direct flow than men in terms of median values (all *P* < 0.0125, Table 1; Fig. 2A, C). Global and average diastolic KE_{iEDV} had no differences between the sexes for LV, while significantly increased in women

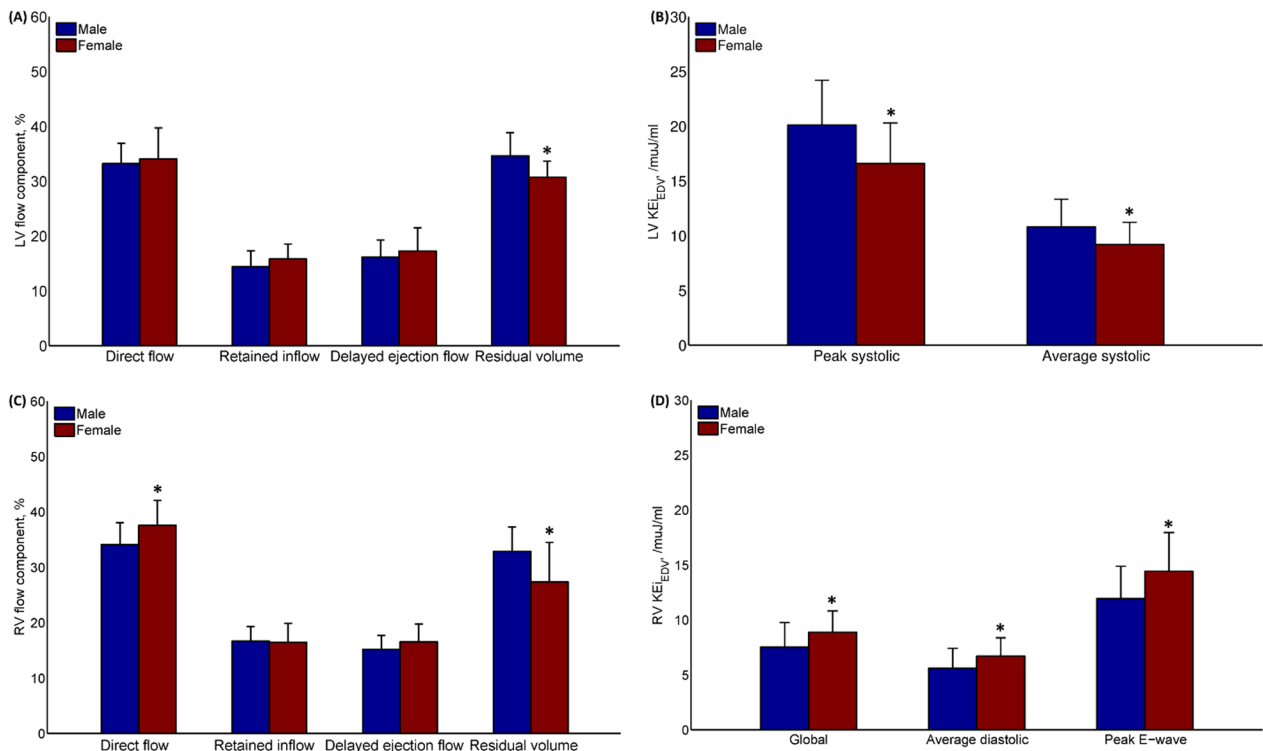


Fig. 2 Comparisons between female and male for **(A)** left ventricular (LV) flow components; **(B)** LV peak systolic and average systolic KE_{iEDV}; **(C)** right ventricular (RV) flow components; and **(D)** RV global, average diastolic, and peak E-wave KE_{iEDV}. KE_{iEDV} Kinetic energy normalized to end-diastolic volume (EDV). *denotes *P* < 0.0125 for **(A, C)** and *P* < 0.007 for **(B, D)** based on Bonferroni significance levels from Table 1

for RV (both $P < 0.007$, Table 1; Fig. 2D); systolic phase (average and peak) KEi_{EDV} decreased in women for LV (both $P < 0.007$, Table 1; Fig. 2B), while no differences for RV between the sexes. RV peak E-wave KEi_{EDV} increased in women ($P < 0.007$, Fig. 2D), and peak A-wave KEi_{EDV} and E/A ratio were similar between the sexes for both LV and RV (Table 1). Mean \pm SD representations of LV and RV 4D flow parameters for men and women can be found in Additional file 1: Table S2.

Age differences of LV and RV 4D flow parameters

The median and interquartile range (IQR) values of LV and RV 4D flow parameters for each age group

are given in Table 2. No significant differences were observed for four flow components, median global, peak systolic, average systolic and average diastolic KEi_{EDV} across all age groups for both LV and RV. Peak E-wave, peak A-wave and KEi_{EDV} E/A ratio had significant difference among five age groups for both LV and RV (Table 2). The 60–70 year old age group had significantly higher LV peak A-wave KEi_{EDV} and lower RV peak E-wave KEi_{EDV} compared with groups with age < 50 (both $P \leq 0.007$). LV and RV 4D flow parameters for each age group in terms of mean \pm SD can be found in Additional file 1: Table S3.

Table 2 4D flow components and kinetic energy (KE) parameters according to age groups

	20–29 (n = 31)	30–39 (n = 45)	40–49 (n = 38)	50–59 (n = 29)	60–70 (n = 20)	<i>P</i> ¹
Gender, M/F	18/13	25/20	23/15	14/15	15/5	0.447
LV ejection fraction, %	61 \pm 7	63 \pm 7	64 \pm 9	64 \pm 8	63 \pm 7	0.419
RV ejection fraction, %	55 \pm 6	55 \pm 7	58 \pm 8	58 \pm 6	56 \pm 5	0.164
LV flow components ^a						
Direct flow, %	37 (33, 41)	33 (29, 36)*	33 (28, 39)*	33 (28, 39)*	33 (28, 37)	0.110
Retained inflow, %	14 (11, 17)	16 (12, 19)	16 (13, 17)	16 (14, 19)	16 (12, 19)	0.294
Delayed ejection flow, %	16 (13, 19)	17 (14, 19)	17 (14, 20)	16 (13, 22)	18 (16, 20)	0.793
Residual volume, %	33 (27, 37)	33 (30, 37)	33 (29, 38)	33 (27, 39)	32 (27, 38)	0.951
LV KEi_{EDV} parameters ^a						
Global KEi_{EDV} , μ J/ml	9.5 (7.7, 11.2)	8.8 (7.0, 11.4)	8.5 (7.9, 11.0)	8.9 (7.1, 11.6)	10.2 (7.3, 12.2)	0.922
Peak systolic KEi_{EDV} , μ J/ml	17.8 (14.5, 22.9)	18.5 (15.6, 25.4)	17.0 (14.3, 23.0)	18.0 (13.3, 22.0)	18.6 (14.5, 22.8)	0.951
Average systolic KEi_{EDV} , μ J/ml	10.0 (8.4, 12.6)	10.1 (7.8, 13.3)	10.0 (8.3, 12.3)	9.8 (7.3, 12.6)	10.7 (9.0, 14.4)	0.815
Average diastolic KEi_{EDV} , μ J/ml	8.8 (7.3, 11.3)	8.5 (6.4, 10.5)	8.2 (6.9, 10.6)	8.7 (6.2, 10.8)	9.2 (6.8, 13.1)	0.874
Peak E-wave KEi_{EDV} , μ J/ml	30.9 (23.8, 37.4)	27.9 (23.9, 32.3)	23.5 (19.0, 30.1)	18.5 (14.5, 29.1)* [§]	20.1 (16.0, 24.3)* [§]	< 0.001
Peak A-wave KEi_{EDV} , μ J/ml	9.0 (6.5, 11.4)	8.0 (5.6, 13.4)	10.6 (6.8, 15.3)	13.4 (10.3, 18.6)* [§]	18.0 (12.9, 25.3)* [§]	< 0.001
KEi_{EDV} E/A ratio	3.49 (2.81, 4.63)	3.44 (2.26, 5.23)	2.10 (1.53, 3.26)* [§]	1.43 (0.90, 2.27)* [§]	1.16 (0.81, 1.47)* [§]	< 0.001
RV flow components ^a						
Direct flow, %	34 (29, 39)	35 (30, 40)	36 (31, 41)	37 (33, 40)	37 (32, 40)	0.504
Retained inflow, %	16 (14, 18)	17 (14, 18)	16 (14, 19)	17 (13, 22)	18 (15, 22)	0.625
Delayed ejection flow, %	17 (13, 19)	16 (13, 19)	16 (12, 19)	14 (11, 20)	17 (11, 19)	0.511
Residual volume, %	29 (27, 38)	33 (28, 37)	30 (25, 35)	30 (24, 38)	26 (25, 36)	0.322
RV KEi_{EDV} parameters ^a						
Global KEi_{EDV} , μ J/ml	9.0 (7.0, 11.3)	8.3 (6.9, 10.2)	8.5 (7.3, 9.6)	7.7 (6.6, 10.9)	7.3 (5.6, 9.2)	0.268
Peak systolic KEi_{EDV} , μ J/ml	23.1 (19.4, 30.9)	21.3 (18.3, 27.3)	21.7 (18.4, 28.0)	20.5 (16.3, 26.1)	19.3 (16.6, 27.0)	0.305
Average systolic KEi_{EDV} , μ J/ml	12.7 (11.3, 16.9)	11.9 (9.7, 13.9)	12.3 (10.0, 14.4)	11.7 (8.8, 13.4)	11.0 (8.5, 12.3)	0.181
Average diastolic KEi_{EDV} , μ J/ml	6.6 (5.2, 8.6)	6.0 (4.9, 7.7)	6.1 (5.3, 7.5)	6.2 (4.6, 8.3)	5.1 (3.9, 8.0)	0.467
Peak E-wave KEi_{EDV} , μ J/ml	14.8 (11.6, 21.0)	13.8 (12.1, 16.5)	12.7 (9.7, 16.0)	11.3 (8.0, 14.6)	9.3 (7.0, 12.7)* [§]	0.001
Peak A-wave KEi_{EDV} , μ J/ml	6.9 (4.8, 8.7)	7.2 (4.5, 9.4)	8.7 (7.0, 11.2)	10.3 (8.1, 14.8)* [§]	9.7 (7.8, 12.7)*	< 0.001
KEi_{EDV} E/A ratio	1.95 (1.59, 3.05)	2.13 (1.36, 3.02)	1.32 (1.06, 2.15)*	0.94 (0.73, 1.35)* [§]	1.03 (0.68, 1.25)* [§]	< 0.001

Data were represented as mean \pm SD or ^amedian (25th percentile, 75th percentile). *EDV* end-diastolic volume, KEi_{EDV} KE normalized to EDV, *LV* left ventricle, *RV* right ventricle

¹ *P* value from Kruskal–Wallis (K–W) non-parametric one-way ANOVA analysis. Bonferroni significance levels between any two age groups for LV flow components, LV KEi_{EDV} parameters, RV flow components and RV KEi_{EDV} parameters are calculated as 0.05/4 = 0.0125; 0.05/7 = 0.007; 0.05/4 = 0.0125 and 0.05/7 = 0.007, respectively. *Significant difference compared with 20–29 age group; [§]significant difference compared with 30–39 age group; [#]significant difference compared with 40–49 age group. Bold values denote statistical significance

Association of function and 4D flow parameters with age

Both LV and RV EDV index, ESV index and SV index were negatively associated with age (Table 3, $r = -0.270$, -0.227 and -0.200 for LV, $r = -0.275$, -0.251 and -0.216 for RV, respectively). Ejection fraction, flow components, global and average diastolic KE_{iEDV} were uncorrelated with age for both LV and RV (Table 3). Negative associations of RV peak systolic and average systolic KE_{iEDV} with age were observed ($r = -0.167$, $P = 0.033$ and $r = -0.158$, $P = 0.044$), while LV peak systolic and average systolic KE_{iEDV} were uncorrelated with age. Negative associations were found between age and peak E-wave ($r = -0.355$ for LV, and $r = -0.318$ for RV, $P < 0.001$) (Table 3), more so in men ($r = -0.385$ for LV and $r = -0.382$ for RV, $P < 0.01$) (Fig. 3A, D); peak A-wave KE_{iEDV} was positively correlated with age ($r = 0.458$ for LV, and $r = 0.341$ for RV, $P < 0.001$) (Table 3), more so in women ($r = 0.477$ for LV and $r = 0.456$ for RV, $P < 0.01$) (Fig. 3B, E); KE_{iEDV} E/A ratio was negatively associated with age ($r = -0.475$ for LV and -0.504 for RV, both $P < 0.001$) (Table 3), more so in women for LV ($r = -0.546$, Fig. 3C) and in men for RV ($r = -0.517$,

Fig. 3F). Regression equations, confidence and prediction intervals are also presented in the scatter plots of Fig. 3.

Discussion

To the best of our knowledge, this is the largest study to investigate age- and sex differences for 4D flow CMR derived LV and RV flow components and KE indexed to end-diastolic volume. We found that (1) women had higher RV direct flow, RV global, RV average diastolic, and RV peak E-wave, and lower LV and RV residual volume, LV peak systolic and average systolic KE_{iEDV} compared to men; (2) for both LV and RV, ageing was associated with decrease in early diastolic KE_{iEDV} and increase in late diastolic KE_{iEDV} , but not with global and average diastolic KE_{iEDV} or relative flow components.

Reference values of LV and RV 4D flow CMR parameters

With advances of 4D flow CMR techniques and availability of analysis tools, there have been multiple studies investigating 4D flow CMR-derived flow components and KE parameters, but most of the studies have focused on the LV. Our previous study established normal values of LV flow components and KE ($n = 74$, 34 female) [12], and the mean values in the current study were in agreement with those reported in [12] for LV flow components and KE_{iEDV} parameters but with a larger number of healthy subjects (Additional file 1: Table S2). As in previous 4D flow CMR studies [8, 10, 16, 17], RV flow components were categorized into 4 components with the same definitions. However, different software analyses might result in slight discrepancies in the values. Direct flow refers to the blood that enters the ventricle during diastole and leaves the ventricle during systole, and the median values were comparable between RV and LV in our study. Retained inflow and delayed ejection flow should be proportionately equivalent in healthy subjects, which was observed in our study (mean values: 17 vs. 17%, Additional file 1: Table S2). Fredriksson et al. [4] assessed the RV flow components in 10 healthy subjects (mean age: 46 ± 11 years, M/F: 6/4), and observed different mean values of direct flow (44 vs. 35%) and residual volume (23 vs. 31%) compared with our results, but similar mean retained inflow (17 vs. 17%) and delayed ejection flow (15 vs. 17%). Another study by Fredriksson et al. [16] calculated the RV flow components in 11 healthy controls (mean age: 67 ± 4 years, M/F: 2/9) using EnSight, and reported similar RV direct flow (44%) and residual volume (24%), but different retained inflow (19%) and delayed ejection flow (13%). Wang et al. [17] studied 14 healthy controls (mean age: 44 ± 12 years, M/F: 5/9) using CVI⁴², and reported slightly different values compared to our results: direct flow (40.7 vs. 35%), retained inflow (19.1 vs. 17%), delayed ejection flow (19.5 vs. 17%) and

Table 3 Correlation coefficients of 4D flow components and kinetic energy (KE) parameters with age in all subjects

	Left ventricle		Right ventricle	
	Correlation coefficient	P value	Correlation coefficient	P value
Function				
End-diastolic volume index	-0.270	0.001	-0.275	<0.001
End-systolic volume index	-0.227	0.004	-0.251	<0.001
Stroke volume index	-0.200	0.011	-0.216	0.006
Ejection fraction	0.099	0.210	0.132	0.094
4D flow components				
Direct flow	-0.117	0.139	0.131	0.094
Retained inflow	0.064	0.415	0.109	0.165
Delayed ejection flow	0.080	0.310	-0.153	0.051
Residual volume	0.014	0.862	-0.118	0.134
4D KE_{iEDV} parameters				
Global KE_{iEDV}	0.062	0.435	-0.095	0.228
Peak systolic KE_{iEDV}	0.036	0.649	-0.167	0.033
Average systolic KE_{iEDV}	0.106	0.176	-0.158	0.044
Average diastolic KE_{iEDV}	0.022	0.785	-0.042	0.592
Peak E-wave KE_{iEDV}	-0.355	<0.001	-0.318	<0.001
Peak A-wave KE_{iEDV}	0.458	<0.001	0.341	<0.001
KE_{iEDV} E/A ratio	-0.475	<0.001	-0.504	<0.001

EDV end-diastolic volume, KE_{iEDV} KE normalized to EDV. Bold values denote statistical significance

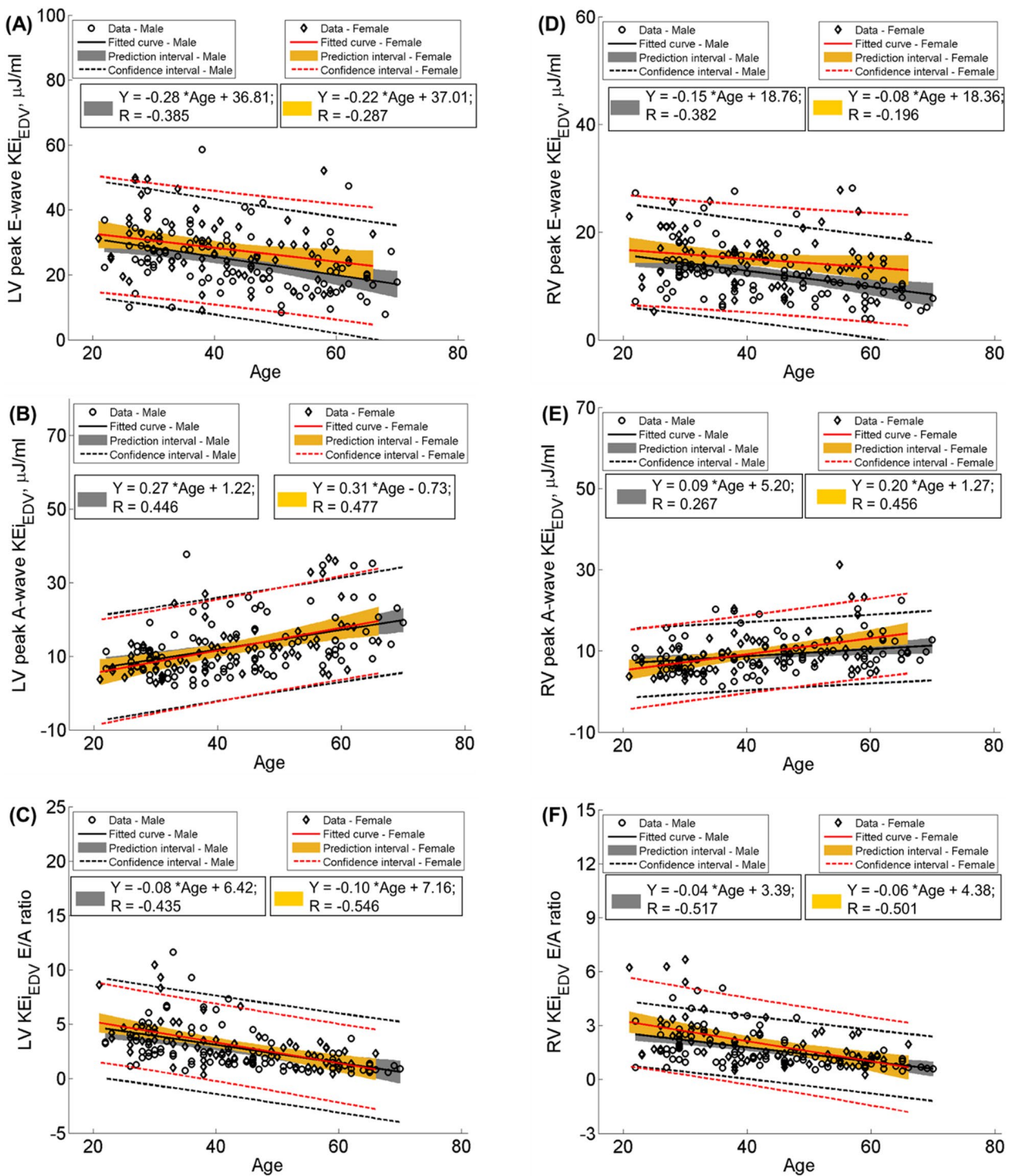


Fig. 3 Scatter plots of peak E-wave (first row), peak A-wave KE_{EDV} (middle row) and KE_{EDV} E/A ratio (last row) according to age and sex for LV (left panel) and RV (right panel). All figures show regression line, correlation coefficient R, fitted curve (solid line), prediction interval (shaded area) and confidence interval (dot lines). LV left ventricle, RV right ventricle, KE_{EDV} kinetic energy normalized to RV end-diastolic volume

residual volume (20.3 vs. 31%). All these discrepancies might be explained by differences in sample sizes, which were smaller in the aforementioned studies. Moreover, age- and sex-associated changes were not analysed in the above studies. Of note, our current findings are in line with our recent publication [8, 10] but with a larger sample size.

Non-indexed RV KE parameters were reported for 9 healthy volunteers (mean age: 39 ± 15 years, M/F: 6/3) using Ensign [6]; and RV KE, both unindexed and indexed to stroke volume parameters, were calculated for 14 healthy volunteers (mean age: 30 ± 7 years, M/F: 12/2) using Segment with an in-house algorithm [7]. We reported RV flow components and KE indexed to RVEDV in our previous studies with 49 healthy subjects [8] and 51 healthy subjects [10], all of whom were included in the current analysis. The above studies all used healthy subjects as control group, and none of these studies investigated the impact of age and sex on the reported parameters. Until now, only Barker et al. [14] has published on the normal ranges of RV KE_{iEDV} parameters in 53 healthy volunteers between the ages of 20–80 years old (mean age: 45 ± 17 years, M/F: 32/21), most of whom were Caucasian. Their reported mean values were smaller compared to our results for RV global (4.6 vs. 8.8 $\mu\text{J}/\text{ml}$), average systolic (8.12 vs. 12.3 $\mu\text{J}/\text{ml}$), average diastolic (2.68 vs. 6.6 $\mu\text{J}/\text{ml}$), peak E-wave (5.53 vs. 13.4 $\mu\text{J}/\text{ml}$), peak A-wave (4.59 vs. 9.2 $\mu\text{J}/\text{ml}$) and KE_{iEDV} E/A ratio (1.51 vs. 1.80), respectively (Additional file 1: Table S2). By the KE definition, only blood accelerated into the ventricle will cause an increase in KE. As discussed by Carlsson et al. [5], the more the valve slides over the blood volume, the less is the need for acceleration of blood through suction, and hence less KE is generated. We postulate that these discrepant findings could be explained by the relatively small sample size, larger RVEDV and longitudinal displacements observed in Caucasians compared with Asians [26].

Association of sex with LV and RV 4D flow parameters

It is well known that women have smaller heart size and larger ejection fraction than men, and sex differences in cardiac function have been reported in congenital heart disease [27]. As stated in [28], better understanding of the sex differences is urgently needed, and sex-specific diagnostic criteria should be used when diagnosing cardiac disease in women. The sex differences in LV 4D flow components have been previously discussed in 74 healthy subjects [12]. In addition, Rutkowski et al. [15] reported LV KE differences between 20 male and 19 female healthy subjects with mean ages 26 and 27 years, respectively. Our findings expanded on these by including older subjects, reporting additional LV/RV flow components and

RV KE parameters, and analysed the age trend of these parameters. As they only provided non-indexed LV KE values, direct comparison could not be made. However, as previously discussed [12], the LV peak systolic KE in both sexes were higher than our prior findings in [12], with lower values in women for both studies. Direct flow and delayed ejection flow collectively constitute the ejection portion of RV volume, which was significantly higher in women (55 vs. 49%, $P < 0.001$). Increase in RV direct flow in women could be due to the higher RVEF, as they were positively correlated ($r = 0.228$, $P = 0.003$). Similarly, higher systolic performance in women based on RV global longitudinal strain (GLS) and RA reservoir strain (peak strain during systole) measurements had been reported in Asians [29]. There were no significant sex differences in RV average and peak systolic KE_{iEDV} , and similar findings were observed for peak tricuspid annular (TA) systolic velocity and TA displacement at end-systole [29]. Unlike Barker et al. [14], we observed significantly larger RV global, average diastolic, and peak E-wave KE_{iEDV} in women compared to men. Leng et al. [29] also observed that women had significantly higher RV early diastolic GLS rate and RA conduit strain rate (peak strain rate during early diastole) compared with men using CMR feature tracking. The higher RV peak E-wave KE_{iEDV} in women was possibly due to the smaller RVEDV as non-indexed RV peak E-waves were comparable between women and men (1.65 vs. 1.87 mJ, $P = 0.082$). As discussed by Carlsson et al. [5], RV early diastolic filling is attributable to a high degree to the return of the atrioventricular plane toward the base of the heart. TA early diastolic velocities were similar in both sexes [29], which could explain the lack of significant sex differences in non-indexed peak E-wave KE values. Comparable values of RV peak A-wave KE_{iEDV} in both sexes imply that after taking account of RVEDV, the amount of blood accelerated into the RV in late diastole is similar.

Association of age with LV and RV 4D flow parameters

In our study, we observed that the biventricular EDV index, ESV index and SV index had significant negative correlations with age (all $P < 0.01$), which is in line with previous literature [30], and corroborates similar observations in healthy Singaporean Chinese [31] and the MESA-right ventricle study [32]. Relative proportions of the four LV and RV flow components were preserved across all age groups, implying a lack of association with age, which is consistent with the finding between age and LV flow components [12]. Similarly, RV global and average diastolic KE_{iEDV} were comparable across all age groups and were not associated with age, which are consistent with previous findings [14]. RV peak systolic and average systolic KE_{iEDV} had significant associations

with age ($P=0.033$ and $P=0.044$), which had not been observed in Barker et al. [14], possibly due to the small sample size in the latter. Indeed, findings of RV peak E-wave and KE_{iEDV} E/A ratio decreasing, and peak A-wave KE_{iEDV} increasing, with age have also been observed in other populations [14]. Innelli et al. [33] found a progressive reduction of early diastolic peak velocity and increase of late diastolic peak velocity on measurement of lateral tricuspid annular (TA) velocity using pulsed tissue Doppler in 298 healthy subjects (mean age: 42 ± 18 years, M/F: 186/112). Leng et al. [29] also observed similar age associations of RV velocities, RV global longitudinal strain rates, and right atrial (RA) strain rates during diastole derived from semi-automatic feature tracking in the four-chamber view in 360 healthy subjects (mean age: 50 ± 17 years, M/F: 180/180).

Influence of vendors and acceleration methods on flow component analysis

In this study, two different vendors and field strengths (3.0 T Philips and 1.5 T Siemens) were used for CMR image acquisition, with protocols for 4D flow CMR based on the latest consensus recommendations [19]. 4D flow CMR using echo-planar imaging (EPI) had good in-scan consistency and strong scan-rescan reproducibility for the LV inflow and outflow assessment [23]. As discussed by Westenberg et al. [34], only the flow velocity in the non-blip EPI direction is correctly encoded, and in particular (high) velocities in the direction of the readout gradient are fraught with systematic inaccuracies. These inaccuracies seem to be within reasonable error limits for valvular flow evaluations [34]. Flow component analysis has been demonstrated feasible and applicable for different sequences and different scanners [8–10, 16, 17]. However, the differences in valid particle tracing and four flow components between different accelerations (EPI versus non-EPI) are unknown, and we speculate that flow components are not so much sensitive to EPI and non-EPI as they are calculated basing on full cardiac cycle particle tracing within the full cardiac cavity. In age- and sex-matched subgroups from Philips (EPI) and Siemens (non-EPI), we found they had comparable numbers of valid particles ($90 \pm 4\%$ vs. $91 \pm 8\%$, $P=0.530$, Additional file 1: Table S4) and nonsignificant RV flow components. The results in current study indicated that vendors/scan accelerations did not influence the flow component analysis in healthy subjects. Additionally, we found that the retained inflow, delayed ejection flow and their differences were comparable

between scanners and field strength in healthy subjects (Additional file 1: Table S4).

Influence of phase offset correction on flow component and kinetic energy analysis

While correction for phase offset errors is recommended in consensus guidelines on 4D flow CMR applications [19], the magnitude and impact of uncorrected phase offset errors on KE measurements have not been studied. We performed preliminary analysis in 10 Philips data and 10 Siemens data to assess the impact of phase offset error corrections on biventricular 4D flow component and KE. For Philips data, as part of the phase offset errors were already corrected in the scanner, only subtraction of median velocity within the myocardial region at ES was not applied in Mass. For Siemens data, 2nd order static tissue plane fit method and subtraction of median velocity within the myocardial region at ES were not applied in Mass. Using nonparametric Wilcoxon Signed-Ranks Test, we found that all KE_{iEDV} parameters for both LV and RV had no significant differences for both Philips and Siemens data (Additional file 1: Table S5), and only LV direct flow had significant difference for Philips data ($P=0.011$, Additional file 1: Table S5). Therefore, a small offset (in the order of 1 cm/s) will have little impact on KE quantification since KE of the complete ventricle is mainly determined by the velocity of in- and outflow blood having a velocity in the range of 50–80 cm/s. In contrast, for particle tracing, an error of 1 cm/s is significant since such an error will result in particles drifting away over a distance of 1 cm/s within one cardiac cycle (assuming a heart rate of 60 bpm). The comprehensive investigation of the impact of phase offset error correction is warranted in future research.

Clinical perspective

Biventricular blood flow components and energetics derived from contemporaneous 4D flow CMR measurements offer novel insights into intracavity flow and hemodynamic changes. Reduced RV direct flow was observed in rTOF [8], PAH [10] and pediatric Fontan patients [35]. In our prior publications, we found RV direct flow to be independently associated with RV dysfunction, adverse RV remodeling and impaired exercise capacity in rTOF [8] and PAH [10]. In heart failure patients, Stoll et al. have shown that LV direct-flow average KE, but not LV ejection fraction or volumes, was an independent predictor of 6-min walk test [11]. KE computed by summing the KE of each voxel, may provide more comprehensive clinical information than 2D measurements. Therefore, further investigations are needed to obtain a deeper understanding of the physiological effects of age and gender differences on intracardiac flow parameters. The

current study takes a first step in addressing the age- and sex differences and trends for LV and RV 4D flow parameters, and reporting the associations of age and sex with these, in a sizable cohort.

Study limitations

There were some limitations to this study. First, the sample size in the 60–70 years age group is relatively small ($n=20$, 5 females) as it is challenging to recruit older subjects free of cardiovascular diseases. In addition, the size for each age group is unequal and the gender in each group is imbalanced. However, age- and gender trends of the 4D flow parameters can still be observed. Future studies with adequate and balanced numbers in the various age groups stratified by sex are needed to establish age- and sex-based normal references. Second, 4D flow CMR images were acquired using two different scanners (Philips and Siemens), which is a common practice in multicenter studies. We mitigated potential differences by standardizing the acquisition procedures as much as possible to be consistent with consensus recommendations [19, 20]. Thirdly, unlike the Philips scanner, prospective electrocardiogram (ECG) triggering was used in the Siemens scanner. To ensure the diastolic phase was fully covered and the late diastolic peak flow not missed, we deliberately set the RR interval to exceed the actual RR interval, resulting longer scan times than retrospective ECG triggering. Fourthly, in the current study, we normalized KE to end-diastolic volume, which was adopted in previous studies [8–10, 12–14]. However, a few studies have normalized KE to stroke volume [7, 15], body surface area [6, 7] and cardiac output [7]. Therefore, when referencing the flow components and KE results in the current study, special attention should be paid to the normalization parameter. Lastly, our healthy subjects were identified based on their past medical history. High readings of blood pressure measurements may appear at the time of CMR, we did not disqualify the subjects from participation in the study so long as the subjects did not have a past history of hypertension. White coat hypertension is not uncommon in our experience, especially among older adults [36]. We did not perform additional testing (e.g., repeat blood pressure measurements or ambulatory blood pressure recording) to verify normal blood pressure.

Conclusion

Age- and sex trends of 4D flow CMR-derived flow component and KE parameters for both LV and RV were investigated in a sizable cohort. We found that for both LV and RV, flow components, average KE_{EDV} for diastole and complete cardiac cycle neither change across age groups nor with age, whereas peak E-wave KE_{EDV}

decreases and peak A-wave KE_{EDV} increases with age. Additionally, sex differences in 4D flow CMR-derived parameters were observed with women having reduced LV and RV residual volume and LV peak and average systolic KE_{EDV} , and increased RV direct flow and RV KE_{EDV} of global, average diastole and peak E-wave. These findings may potentially explain the differences in individual responses of the heart to cardiopulmonary diseases and their treatment.

Abbreviations

1.5 T	1.5 Tesla
3.0 T	3.0 Tesla
2D	Two-dimensional
4D	Four-dimensional
AI	Artificial intelligence
BSA	Body surface area
CMR	Cardiovascular magnetic resonance
CPET	Cardiopulmonary exercise testing
ECG	Electrocardiogram
EDV	End-diastolic volume
EF	Ejection fraction
EPI	Echo-planar imaging
ES	End systole
ESV	End-systolic volume
GLS	Global longitudinal strain
IQR	Interquartile range
KE	Kinetic energy
KE_{EDV}	KE normalized to EDV
LV	Left ventricle
LVEDV	Left ventricular end-diastolic volume
LVEF	Left ventricular ejection fraction
LVESV	Left ventricular end-systolic volume
PAH	Pulmonary arterial hypertension
PC	Phase-contrast
rTOF	Repaired tetralogy of Fallot
RA	Right atrial
RV	Right ventricle
RVEDV	Right ventricular end-diastolic volume
RVEF	Right ventricular ejection fraction
RVESV	Right ventricular end-systolic volume
SD	Standard deviation
SENSE	Sensitivity encoding
SV	Stroke volume
TA	Tricuspid annular

Supplementary Information

The online version contains supplementary material available at <https://doi.org/10.1186/s12968-023-00960-x>.

Additional file 1: Table S1. Acquisition parameters of cine and 4D flow CMR imaging in two centres; **Table S2.** Flow components and kinetic energy (KE) parameters for the overall population, men and women; **Table S3.** Flow components and kinetic energy (KE) parameters according to age groups; **Table S4.** Right ventricular (RV) flow parameters between different scanners with age- and sex-matched subjects; **Table S5.** Impact of phase offset correction on the flow component and kinetic energy.

Additional file 2: Movies showing four-chamber views with right ventricle (RV) four flow components using particle tracing in a 29-year-old normal subject, a 36-year-old normal subject, a 49-year-old normal subject, a 55-year-old normal subject and a 64-year-old normal subject. Yellow circles denote the RV contours from stacks of short axis views. Color legend: green (RV direct flow), yellow (RV retained inflow), blue (RV delayed ejection flow), red (RV residual volume).

Acknowledgements

We would like to thank Dr Zee Pin Ding, Dr Soo Teik Lim, Dr Jie Sheng Foo, Dr Phong Teck Lee, and Dr Jonathan Jiunn Liang Yap from National Heart Centre Singapore; Dr Ivandito Kuntjoro, Dr Yinghao Lim, Dr Devinder Singh, Dr Chen Ching Kit, Dr Quek Swee Chye and Ms. Xin Yi Tan from National University Hospital Singapore, Dr Jonathan Choo Tze Liang, Dr Dyan Zhang ZheWei, Ms. Ng Jing Wen and Ms. Kathy Liaw Chiew Suan from KK Women's and Children's Hospital for the subject recruitment of the study.

Author contributions

XDZ, RST, PG, PC and LZ conceived the study design; XDZ and LS analyzed data; XDZ, RST, PG and LZ interpreted results; XDZ, SL and JCA performed statistical analysis; XDZ, RST and LZ drafted manuscript; XDZ, RST, PG, PC, SL, JB, Lynette LST, TJY, MF, TTL, CCO, SZ, RJVG, JCA, THT, JWY, JLT, MH, SP, JJMW, and LZ edited and revised manuscript. All authors read and approved the final manuscript.

Funding

This study received funding support from the National Medical Research Council of Singapore (Grant Nos. NMRC/OFIRG/0018/2016, MOH-000358, MOH-000351). The funder had no role in the design and conduct of the study; collection; management, analysis, and interpretation of the data; and preparation, review, or approval of the manuscript.

Availability of data and materials

The datasets used and/or analysed during the current study are available from the corresponding author on reasonable request.

Declarations

Ethics approval and consent to participate

The study protocol was approved by the SingHealth Centralised Institutional Review Board and Domain specific review board. Informed consent was obtained from all participants.

Consent for publication

Written informed consent was obtained from all participants for inclusion of their data in publications.

Competing interests

The authors declare that they have no competing interests.

Author details

¹National Heart Research Institute Singapore, National Heart Centre Singapore, Singapore, Singapore. ²Duke-NUS Medical School, Singapore, Singapore. ³Department of Cardiovascular Medicine, University of East Anglia, Norwich, UK. ⁴National University Hospital Singapore, Singapore, Singapore. ⁵Yong Loo Lin School of Medicine, National University of Singapore, Singapore, Singapore. ⁶KK Women's and Children's Hospital, Singapore, Singapore. ⁷Singapore Institute for Clinical Sciences, A*STAR, Singapore, Singapore. ⁸Philips Healthcare Germany, Hamburg, Germany. ⁹Department of Radiology, Leiden University Medical Center, Leiden, The Netherlands. ¹⁰Leeds Institute of Cardiovascular and Metabolic Medicine, University of Leeds, Leeds, UK. ¹¹National Heart Centre Singapore, Singapore, Singapore.

Received: 30 January 2023 Accepted: 30 August 2023

Published online: 18 September 2023

References

- Crandon S, Elbaz MSM, Westenberg JJM, van der Geest RJ, Plein S, Garg P. Clinical applications of intra-cardiac four-dimensional flow cardiovascular magnetic resonance: a systematic review. *Int J Cardiol.* 2017;249:486–93.
- Demirkiran A, van Ooij P, Westenberg JJM, Hofman MBM, van Assen HC, Schoonmade LJ, et al. Clinical intra-cardiac 4D flow CMR: acquisition, analysis, and clinical applications. *Eur Heart J Cardiovasc Imaging.* 2022;23:154–65.
- Azarine A, Garçon P, Stansal A, Canepa N, Angelopoulos G, Silvera S, et al. Four-dimensional flow MRI: principles and cardiovascular applications. *Radiographics.* 2019;39:632–48.
- Fredriksson AG, Zajac J, Eriksson J, Dyverfeldt P, Bolger AF, Ebberts T, et al. 4-D blood flow in the human right ventricle. *Am J Physiol Heart Circ Physiol.* 2011;301:H2344–50.
- Carlsson M, Heiberg E, Toger J, Arheden H. Quantification of left and right ventricular kinetic energy using four-dimensional intracardiac magnetic resonance imaging flow measurements. *Am J Physiol Heart Circ Physiol.* 2012;302:H893–900.
- Jeong D, Anagnostopoulos PV, Roldan-Alzate A, Srinivasan S, Schiebler ML, Wieben O, et al. Ventricular kinetic energy may provide a novel non-invasive way to assess ventricular performance in patients with repaired tetralogy of Fallot. *J Thorac Cardiovasc Surg.* 2015;149:1339–47.
- Sjöberg P, Bidhult S, Bock J, Heiberg E, Arheden H, Gustafsson R, et al. Disturbed left and right ventricular kinetic energy in patients with repaired tetralogy of Fallot: pathophysiological insights using 4D-flow MRI. *Eur Radiol.* 2018;28:4066–76.
- Zhao X, Hu L, Leng S, Tan RS, Chai P, Bryant J, et al. Ventricular flow analysis and its association with exertional capacity in repaired tetralogy of Fallot: 4D flow cardiovascular magnetic resonance study. *J Cardiovasc Magn Reson.* 2022;24:4.
- Garg P, Crandon S, Swoboda PP, Fent GJ, Foley JRJ, Chew PG, et al. Left ventricular blood flow kinetic energy after myocardial infarction—insights from 4D flow cardiovascular magnetic resonance. *J Cardiovasc Magn Reson.* 2018;20:61.
- Zhao X, Leng S, Tan RS, Chai P, Yeo TJ, Bryant JA, et al. Right ventricular energetic biomarkers from 4D Flow CMR are associated with exertional capacity in pulmonary arterial hypertension. *J Cardiovasc Magn Reson.* 2022;24:61.
- Stoll VM, Hess AT, Rodgers CT, Bissell MM, Dyverfeldt P, Ebberts T, et al. Left ventricular flow analysis: novel imaging biomarkers and predictors of exercise capacity in heart failure. *Circ Cardiovasc Imaging.* 2019;12:e008130.
- Zhao X, Tan RS, Garg P, Chai P, Leng S, Bryant J, et al. Impact of age, sex and ethnicity on intra-cardiac flow components and left ventricular kinetic energy derived from 4D flow CMR. *Int J Cardiol.* 2021;336:105–12.
- Crandon S, Westenberg JJM, Swoboda PP, Fent GJ, Foley JRJ, Chew PG, et al. Impact of age and diastolic function on novel, 4D flow CMR biomarkers of left ventricular blood flow kinetic energy. *Sci Rep.* 2018;8:14436.
- Barker N, Zafar H, Fidock B, Elhawaz A, Al-Mohammad A, Rothman A, et al. Age-associated changes in 4D flow CMR derived tricuspid valvular flow and right ventricular blood flow kinetic energy. *Sci Rep.* 2020;10:9908.
- Rutkowski DR, Barton GP, François CJ, Aggarwal N, Roldán-Alzate A. Sex differences in cardiac flow dynamics of healthy volunteers. *Radiol Cardiothorac Imaging.* 2020;2:e190058.
- Fredriksson AG, Svalbring E, Eriksson J, Dyverfeldt P, Alehagen U, Engvall J, et al. 4D flow MRI can detect subtle right ventricular dysfunction in primary left ventricular disease. *J Magn Reson Imaging.* 2016;43:558–65.
- Wang L, Liu M, Zhang PY, Dai JZ, Ma HY, Tao XC, et al. Analysis of right ventricular flow with 4-dimensional flow cardiovascular magnetic resonance imaging in patients with pulmonary arterial hypertension. *Quant Imaging Med Surg.* 2021;11:3655–65.
- Barker N, Fidock B, Johns CS, Kaur H, Archer G, Rajaram S, et al. A systematic review of right ventricular diastolic assessment by 4D flow CMR. *Biomed Res Int.* 2019;2019:6074984.
- Dyverfeldt P, Bissell M, Barker AJ, Bolger AF, Carlhäll CJ, Ebberts T, et al. 4D flow cardiovascular magnetic resonance consensus statement. *J Cardiovasc Magn Reson.* 2015;17:72.
- Zhong L, Schrauben EM, Garcia J, Uribe S, Grieve SM, Elbaz MSM, et al. Intracardiac 4D flow MRI in congenital heart disease: recommendations on behalf of the ISMRM flow & motion study group. *J Magn Reson Imaging.* 2019;50:677–81.
- Alabed S, Alandejani F, Dwivedi K, Karunasagarar K, Sharkey M, Garg P, et al. Validation of artificial intelligence cardiac MRI measurements: relationship to heart catheterization and mortality prediction. *Radiology.* 2022;304:E56.
- Kamphuis VP, van der Palen RLF, de Koning PJH, Elbaz MSM, van der Geest RJ, de Roos A, et al. In-scan and scan-rescan assessment of LV in- and

- outflow volumes by 4D flow MRI versus 2D planimetry. *J Magn Reson Imaging*. 2018;47:511–22.
23. Klein S, Staring M, Murphy K, Viergever MA, Pluim JP. elastix: a toolbox for intensity-based medical image registration. *IEEE Trans Med Imaging*. 2010;29:196–205.
 24. Eriksson J, Carlhäll CJ, Dyverfeldt P, Engvall J, Bolger AF, Ebbers T. Semi-automatic quantification of 4D left ventricular blood flow. *J Cardiovasc Magn Reson*. 2010;12:9.
 25. Eriksson J, Bolger AF, Ebbers T, Carlhäll CJ. Four-dimensional blood flow specific markers of LV dysfunction in dilated cardiomyopathy. *Eur Heart J Cardiovasc Imaging*. 2013;14:417–24.
 26. Addetia K, Miyoshi T, Citro R, Daimon M, Gutierrez Fajardo P, Kasliwal RR, et al. Two-dimensional echocardiographic right ventricular size and systolic function measurements stratified by sex, age, and ethnicity: results of the World Alliance of Societies of Echocardiography Study. *J Am Soc Echocardiogr*. 2021;34:1148–1157.e1.
 27. Pettit KA, Francois CJ, Aggarwal NR, Hess TM, Bartlett HL. Sex-specific differences in ventricular dimensions in repaired tetralogy of Fallot: a retrospective study. *Pediatr Cardiol*. 2019;40:1530–5.
 28. St Pierre SR, Peirlinck M, Kuhl E. Sex matters: a comprehensive comparison of female and male hearts. *Front Physiol*. 2022;13: 831179.
 29. Leng S, Guo J, Tan RS, Chai P, Teo L, Fortier MV, et al. Age- and sex-specific changes in CMR feature tracking-based right atrial and ventricular functional parameters in healthy Asians. *Front Cardiovasc Med*. 2021;8: 664431.
 30. Fiechter M, Fuchs TA, Gebhard C, Stehli J, Klaeser B, Stähli BE, et al. Age-related normal structural and functional ventricular values in cardiac function assessed by magnetic resonance. *BMC Med Imaging*. 2013;13:6.
 31. Le TT, Tan RS, De Deyn M, Goh EP, Han Y, Leong BR, et al. Cardiovascular magnetic resonance reference ranges for the heart and aorta in Chinese at 3T. *J Cardiovasc Magn Reson*. 2016;18:21.
 32. Kawut SM, Lima JA, Barr RG, Chahal H, Jain A, Tandri H, et al. Sex and race differences in right ventricular structure and function: the multi-ethnic study of atherosclerosis-right ventricle study. *Circulation*. 2011;123:2542–51.
 33. Innelli P, Esposito R, Olibet M, Nistri S, Galderisi M. The impact of ageing on right ventricular longitudinal function in healthy subjects: a pulsed tissue Doppler study. *Eur J Echocardiogr*. 2009;10:491–8.
 34. Westenberg JJM, van Assen HC, van den Boogaard PJ, Goeman JJ, Saaid H, Voorneveld J, et al. Echo planar imaging-induced errors in intracardiac 4D flow MRI quantification. *Magn Reson Med*. 2022;87:2398–411.
 35. Stone ML, Schäfer M, DiMaria MV, von Alvensleben JC, Campbell DN, Jagers J, et al. Diastolic inflow is associated with inefficient ventricular flow dynamics in Fontan patients. *J Thorac Cardiovasc Surg*. 2022;163:1195–207.
 36. Tanner RM, Shimbo D, Seals SR, Reynolds K, Bowling CB, Ogedegbe G, et al. White-coat effect among older adults: data from the Jackson Heart Study. *J Clin Hypertens (Greenwich)*. 2016;18:139–45.

Publisher's Note

Springer Nature remains neutral with regard to jurisdictional claims in published maps and institutional affiliations.

Ready to submit your research? Choose BMC and benefit from:

- fast, convenient online submission
- thorough peer review by experienced researchers in your field
- rapid publication on acceptance
- support for research data, including large and complex data types
- gold Open Access which fosters wider collaboration and increased citations
- maximum visibility for your research: over 100M website views per year

At BMC, research is always in progress.

Learn more biomedcentral.com/submissions

