



This is a repository copy of *A systematic review and meta-analysis of a 10-session cognitive behavioural therapy for non-underweight eating disorders*.

White Rose Research Online URL for this paper:

<https://eprints.whiterose.ac.uk/206090/>

Version: Supplemental Material

Article:

Keegan, E. orcid.org/0000-0002-2108-1407, Waller, G. orcid.org/0000-0001-7794-9546 and Wade, T.D. orcid.org/0000-0003-4402-770X (2022) A systematic review and meta-analysis of a 10-session cognitive behavioural therapy for non-underweight eating disorders. *Clinical Psychologist*, 26 (3). pp. 241-254. ISSN 1328-4207

<https://doi.org/10.1080/13284207.2022.2075257>

This is an Accepted Manuscript of an article published by Taylor & Francis in *Clinical Psychologist* on 15/06/2022, available online:

<http://www.tandfonline.com/10.1080/13284207.2022.2075257>.

Reuse

Items deposited in White Rose Research Online are protected by copyright, with all rights reserved unless indicated otherwise. They may be downloaded and/or printed for private study, or other acts as permitted by national copyright laws. The publisher or other rights holders may allow further reproduction and re-use of the full text version. This is indicated by the licence information on the White Rose Research Online record for the item.

Takedown

If you consider content in White Rose Research Online to be in breach of UK law, please notify us by emailing eprints@whiterose.ac.uk including the URL of the record and the reason for the withdrawal request.



eprints@whiterose.ac.uk
<https://eprints.whiterose.ac.uk/>

Figure 1

Prisma Flow Diagram

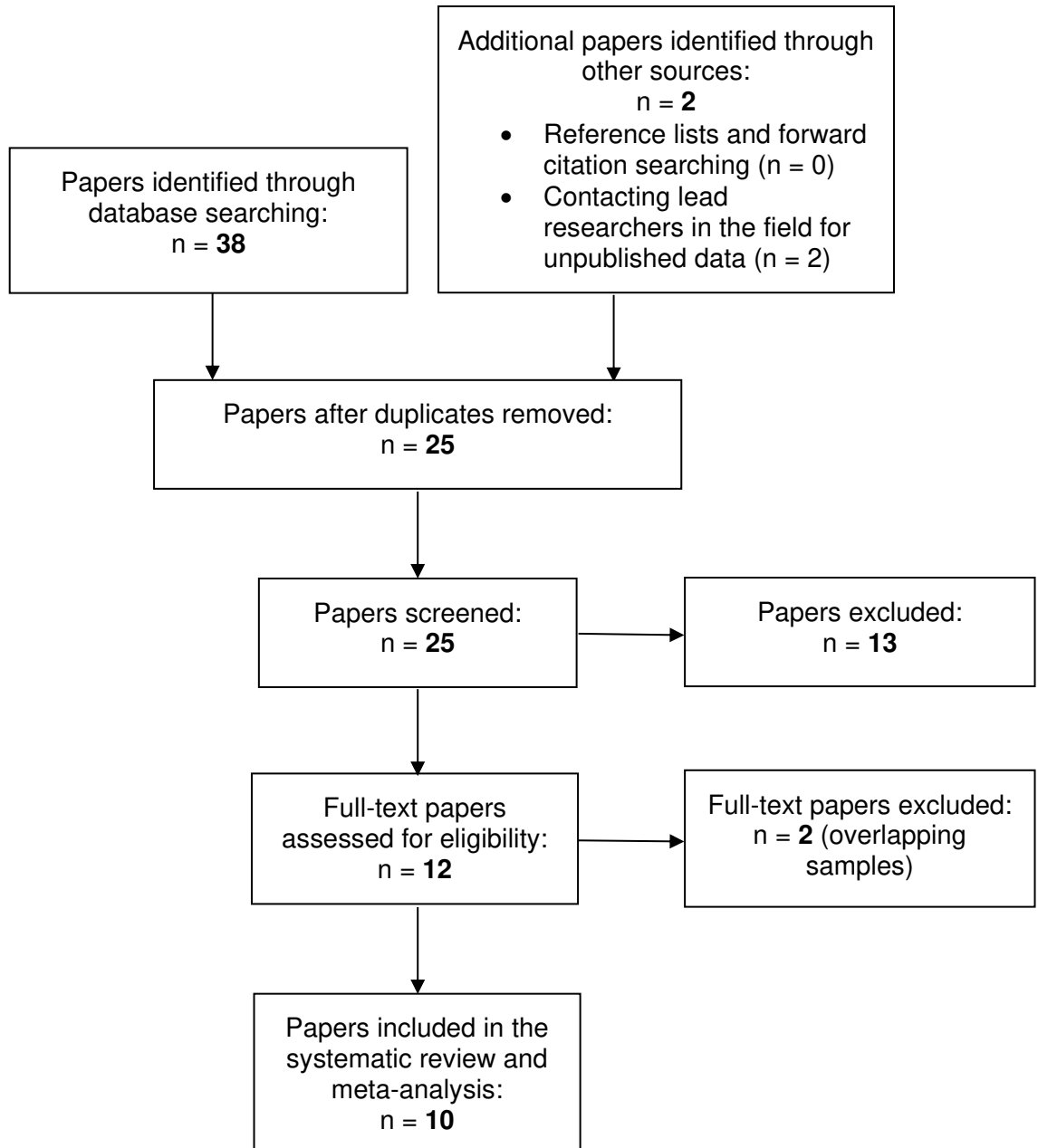


Figure 2

Forest Plot Showing the Within Groups Intent-to-Treat Effect Sizes for Global Eating Disorder Psychopathology from Pre- to Post-Treatment

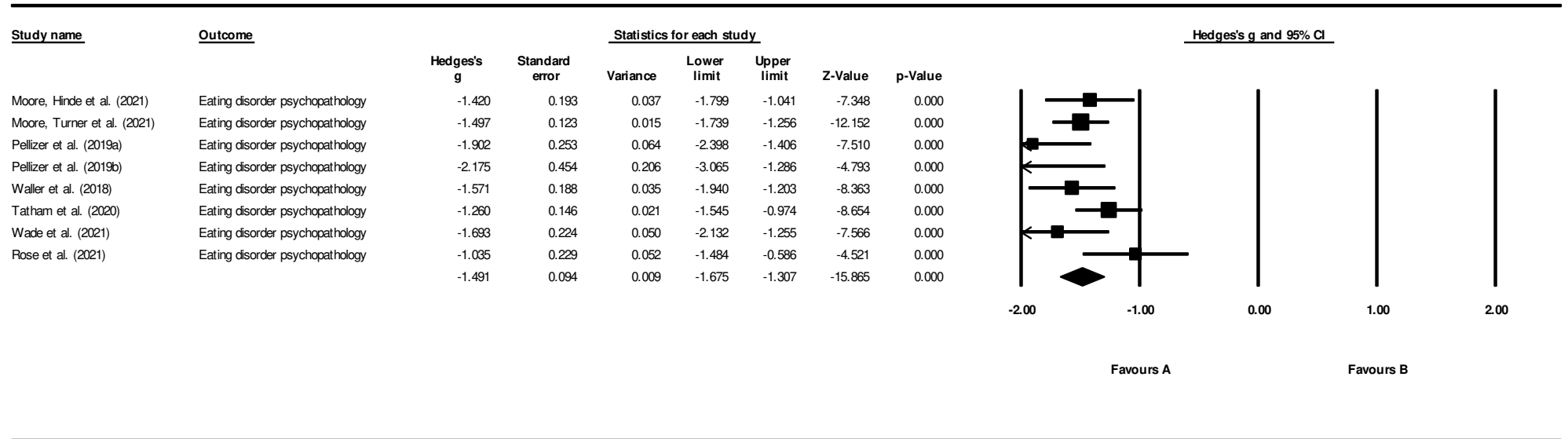


Figure 3

Forest Plot Showing the Within Groups Intent-to-Treat Effect Sizes for Clinical Impairment from Pre- to Post-Treatment

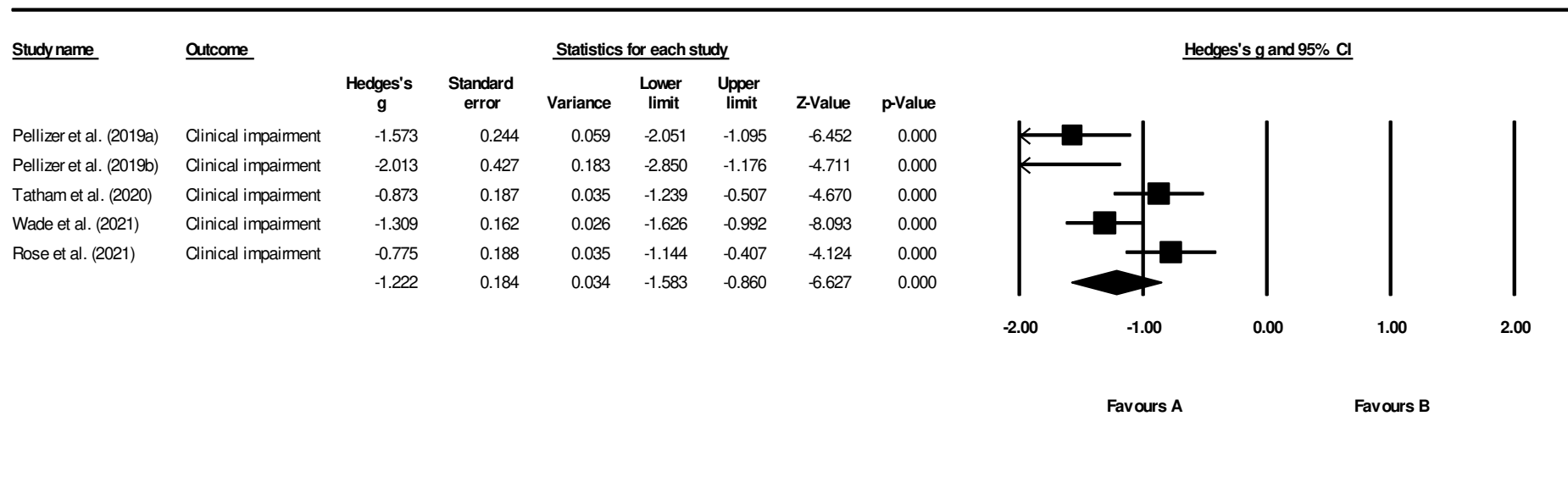


Figure 4

Forest Plot Showing the Within Groups Intent-to-Treat Effect Sizes for Eating Disorder Psychopathology from Pre-Treatment to Follow-up

