



UNIVERSITY OF LEEDS

This is a repository copy of *Standard Versus Modified Ipilimumab, in Combination With Nivolumab, in Advanced Renal Cell Carcinoma: A Randomized Phase II Trial (PRISM)*.

White Rose Research Online URL for this paper:

<https://eprints.whiterose.ac.uk/204363/>

Version: Supplemental Material

Article:

Vasudev, N.S. orcid.org/0000-0001-8470-7481, Ainsworth, G., Brown, S. et al. (24 more authors) (2023) *Standard Versus Modified Ipilimumab, in Combination With Nivolumab, in Advanced Renal Cell Carcinoma: A Randomized Phase II Trial (PRISM)*. *Journal of Clinical Oncology*. ISSN 0732-183X

<https://doi.org/10.1200/JCO.23.00236>

© 2023 by American Society of Clinical Oncology. This is an author produced version of an article published in *Journal of Clinical Oncology*. Uploaded in accordance with the publisher's self-archiving policy.

Reuse

Items deposited in White Rose Research Online are protected by copyright, with all rights reserved unless indicated otherwise. They may be downloaded and/or printed for private study, or other acts as permitted by national copyright laws. The publisher or other rights holders may allow further reproduction and re-use of the full text version. This is indicated by the licence information on the White Rose Research Online record for the item.

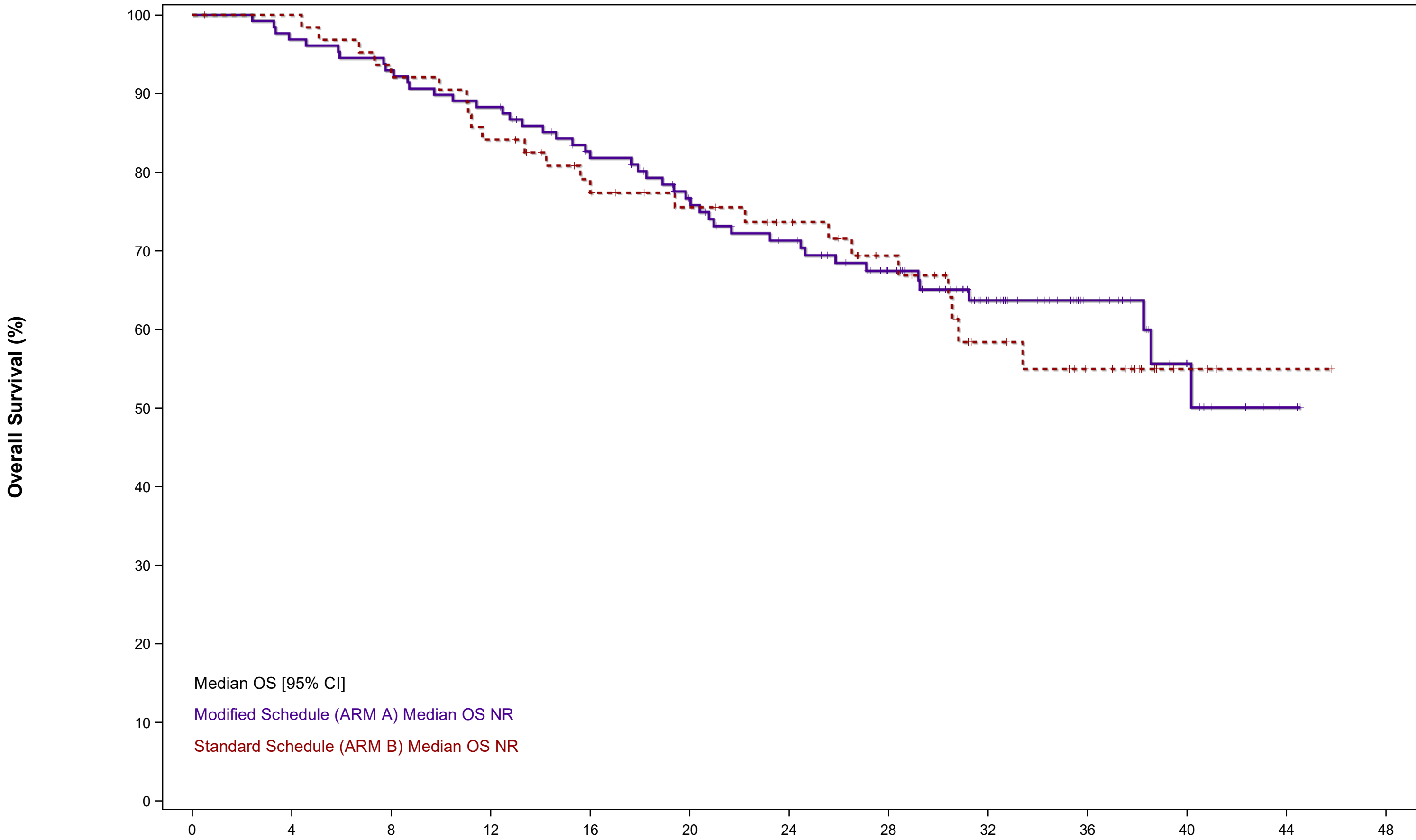
Takedown

If you consider content in White Rose Research Online to be in breach of UK law, please notify us by emailing eprints@whiterose.ac.uk including the URL of the record and the reason for the withdrawal request.



eprints@whiterose.ac.uk
<https://eprints.whiterose.ac.uk/>

B) Overall survival by treatment allocation amongst the mITT population



Median OS [95% CI]
 Modified Schedule (ARM A) Median OS NR
 Standard Schedule (ARM B) Median OS NR

Number at risk (number censored)

Modified Schedule	128 (0)	124 (0)	119 (0)	113 (0)	99 (7)	87 (12)	77 (16)	62 (27)	41 (45)	23 (63)	11 (74)	2 (81)	0 (83)
Standard Schedule	64 (0)	63 (1)	59 (1)	53 (1)	46 (5)	41 (8)	37 (11)	28 (18)	18 (24)	13 (28)	4 (37)	1 (40)	0 (41)