



UNIVERSITY OF LEEDS

This is a repository copy of *Standard Versus Modified Ipilimumab, in Combination With Nivolumab, in Advanced Renal Cell Carcinoma: A Randomized Phase II Trial (PRISM)*.

White Rose Research Online URL for this paper:

<https://eprints.whiterose.ac.uk/204363/>

Version: Supplemental Material

---

**Article:**

Vasudev, N.S. [orcid.org/0000-0001-8470-7481](https://orcid.org/0000-0001-8470-7481), Ainsworth, G., Brown, S. et al. (24 more authors) (2023) *Standard Versus Modified Ipilimumab, in Combination With Nivolumab, in Advanced Renal Cell Carcinoma: A Randomized Phase II Trial (PRISM)*. *Journal of Clinical Oncology*. ISSN 0732-183X

<https://doi.org/10.1200/JCO.23.00236>

---

© 2023 by American Society of Clinical Oncology. This is an author produced version of an article published in *Journal of Clinical Oncology*. Uploaded in accordance with the publisher's self-archiving policy.

**Reuse**

Items deposited in White Rose Research Online are protected by copyright, with all rights reserved unless indicated otherwise. They may be downloaded and/or printed for private study, or other acts as permitted by national copyright laws. The publisher or other rights holders may allow further reproduction and re-use of the full text version. This is indicated by the licence information on the White Rose Research Online record for the item.

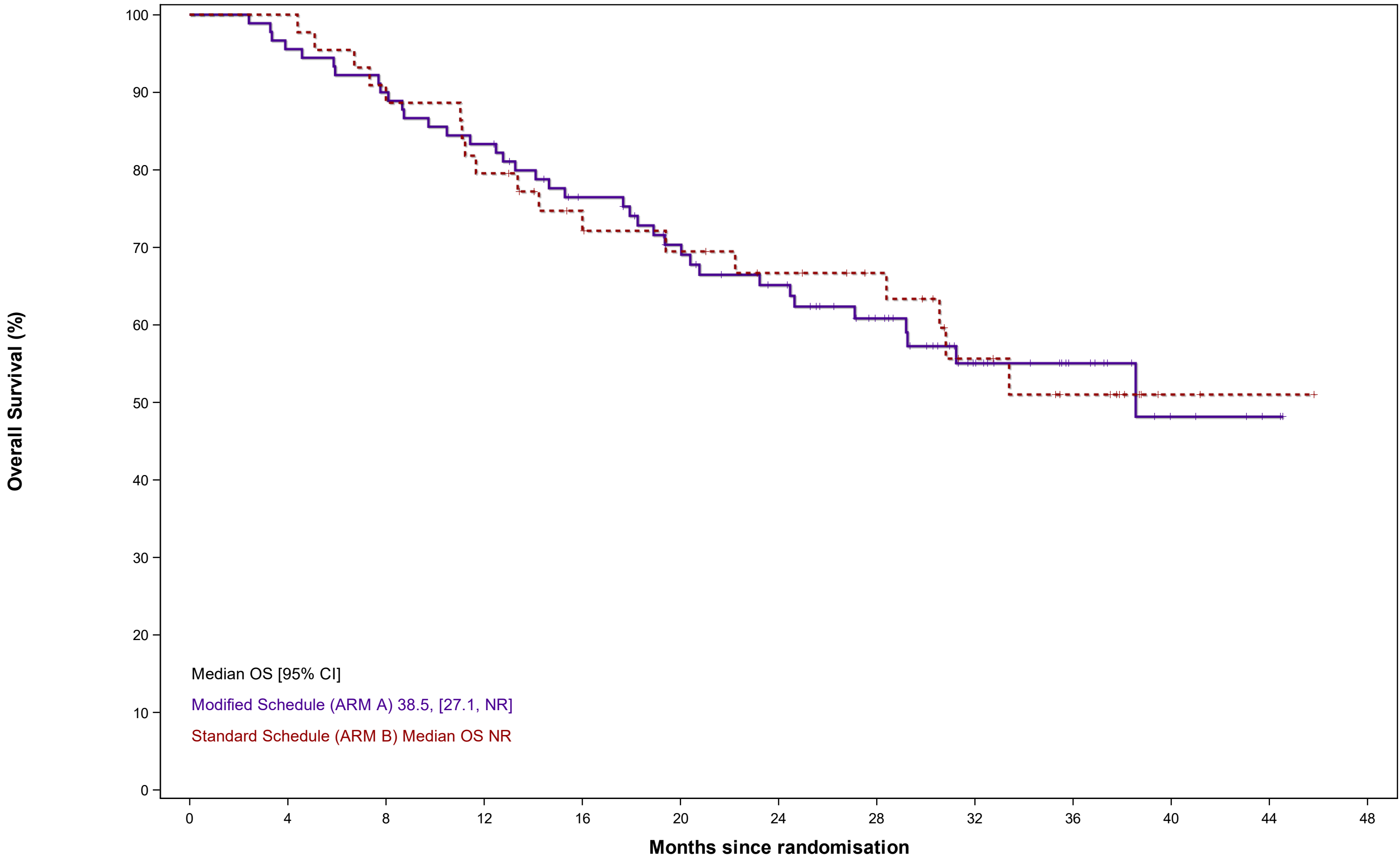
**Takedown**

If you consider content in White Rose Research Online to be in breach of UK law, please notify us by emailing [eprints@whiterose.ac.uk](mailto:eprints@whiterose.ac.uk) including the URL of the record and the reason for the withdrawal request.



[eprints@whiterose.ac.uk](mailto:eprints@whiterose.ac.uk)  
<https://eprints.whiterose.ac.uk/>

B) Overall survival by treatment allocation amongst the IMDC intermediate/poor risk population



Number at risk (number censored)

Modified Schedule	90 (0)	86 (0)	81 (0)	75 (0)	64 (5)	55 (9)	48 (12)	37 (20)	22 (32)	13 (41)	5 (48)	2 (51)	0 (53)
Standard Schedule	44 (0)	44 (0)	40 (0)	35 (0)	29 (4)	26 (5)	23 (7)	20 (10)	13 (14)	9 (17)	2 (24)	1 (25)	0 (26)