



UNIVERSITY OF LEEDS

This is a repository copy of *Author Correction: Functional diversity and community assembly of river invertebrates show globally consistent responses to decreasing glacier cover*.

White Rose Research Online URL for this paper:

<https://eprints.whiterose.ac.uk/201858/>

Version: Accepted Version

Article:

Brown, L.E. orcid.org/0000-0002-2420-0088, Khamis, K. orcid.org/0000-0002-5203-3221, Wilkes, M. orcid.org/0000-0002-2377-3124 et al. (16 more authors) (2023) Author Correction: Functional diversity and community assembly of river invertebrates show globally consistent responses to decreasing glacier cover. *Nature Ecology & Evolution*, 7 (3). pp. 472-476. ISSN 2397-334X

<https://doi.org/10.1038/s41559-023-01989-y>

© The Author(s), under exclusive licence to Springer Nature Limited 2023. This is an author produced version of an article published in *Nature Ecology and Evolution*. Uploaded in accordance with the publisher's self-archiving policy.

Reuse

Items deposited in White Rose Research Online are protected by copyright, with all rights reserved unless indicated otherwise. They may be downloaded and/or printed for private study, or other acts as permitted by national copyright laws. The publisher or other rights holders may allow further reproduction and re-use of the full text version. This is indicated by the licence information on the White Rose Research Online record for the item.

Takedown

If you consider content in White Rose Research Online to be in breach of UK law, please notify us by emailing eprints@whiterose.ac.uk including the URL of the record and the reason for the withdrawal request.



eprints@whiterose.ac.uk
<https://eprints.whiterose.ac.uk/>

Author correction: Functional diversity and community assembly of river invertebrates show globally consistent responses to decreasing glacier cover

Lee E. Brown ^{1*}, Kieran Khamis ², Martin Wilkes ³, Phillip Blaen², John E. Brittain⁴,
Jonathan L. Carrivick¹, Sarah C. Fell¹, Nikolai Friberg^{1,5}, Leopold Füreder⁶, Gisli M. Gislason ⁷,
Sarah Hainie⁸, David M. Hannah ², William H. M. James¹, Valeria Lencioni ⁹, Jon S. Olafsson¹⁰,
Christopher T. Robinson¹¹, Svein J. Saltveit⁴, Craig Thompson¹² and Alexander M. Milner^{2,13}

¹ water@leeds and School of Geography, University of Leeds, Leeds, UK.

² School of Geography, Earth & Environmental Sciences, University of Birmingham, Birmingham, UK.

³ Centre for Agroecology, Water and Resilience, Coventry University, Coventry, UK.

⁴ Natural History Museum, University of Oslo, Oslo, Norway.

⁵ Norsk Institutt for Vannforskning, Oslo, Norway.

⁶ River Ecology and Conservation Research, Institute of Ecology, University of Innsbruck, Innsbruck, Austria.

⁷ Institute of Life and Environmental Sciences, University of Iceland, Reykjavik, Iceland.

⁸ Environment Agency, Birmingham, UK.

⁹ Climate and Ecology Unit, Research and Museum Collections Office, MUSE-Museo delle Scienze, Trento, Italy.

¹⁰ Marine and Freshwater Research Institute, Hafnafjörður, Iceland.

¹¹ EAWAG, Dübendorf, Switzerland.

¹² Department of Environmental Science, Western Wyoming Community College, Rock Springs, WY, USA.

¹³ Institute of Arctic Biology, University of Alaska, Fairbanks, AK, USA.

*e-mail: l.brown@leeds.ac.uk

In the published version of this article, the deposited data files included incorrect glacier cover values for the Greenland sampling sites. These values were linked with only 8 out of the total 364 samples in our database but they were used subsequently in the analyses and plots leading to minor errors in Figures 1, 2, 4 and 5 of the main article, Supplementary Tables 2 and 4, Supplementary Figure 4, and some reported statistical values in the main text. The amended figures are presented below for the main article, and both the online data files and Supplementary materials have been updated.

The changes can be summarised as follows:

Figure 1: Panel h updated to include the correct glacier cover values for each data point, and panels a-i have updated grey background values.

Figure 2: Columns FG1 and FG3 (Greenland row) updated to include the correct glacier cover values for each data point, and other panels have updated grey background values.

Figure 4: Greenland row updated to include the correct glacier cover values for each data point, and other panels have updated grey background values.

Figure 5: Greenland row updated to include the correct glacier cover values for each data point, and other panels have updated grey background values.

Supplementary Table 2: Updated regression co-efficient and fit values

Supplementary Table 4: Updated regression co-efficient and fit values

Supplementary Figure 4: Greenland row updated to include the correct glacier cover values for each data point, and other panels have updated grey background values.

Results reported directly in the main article text are updated as follows:

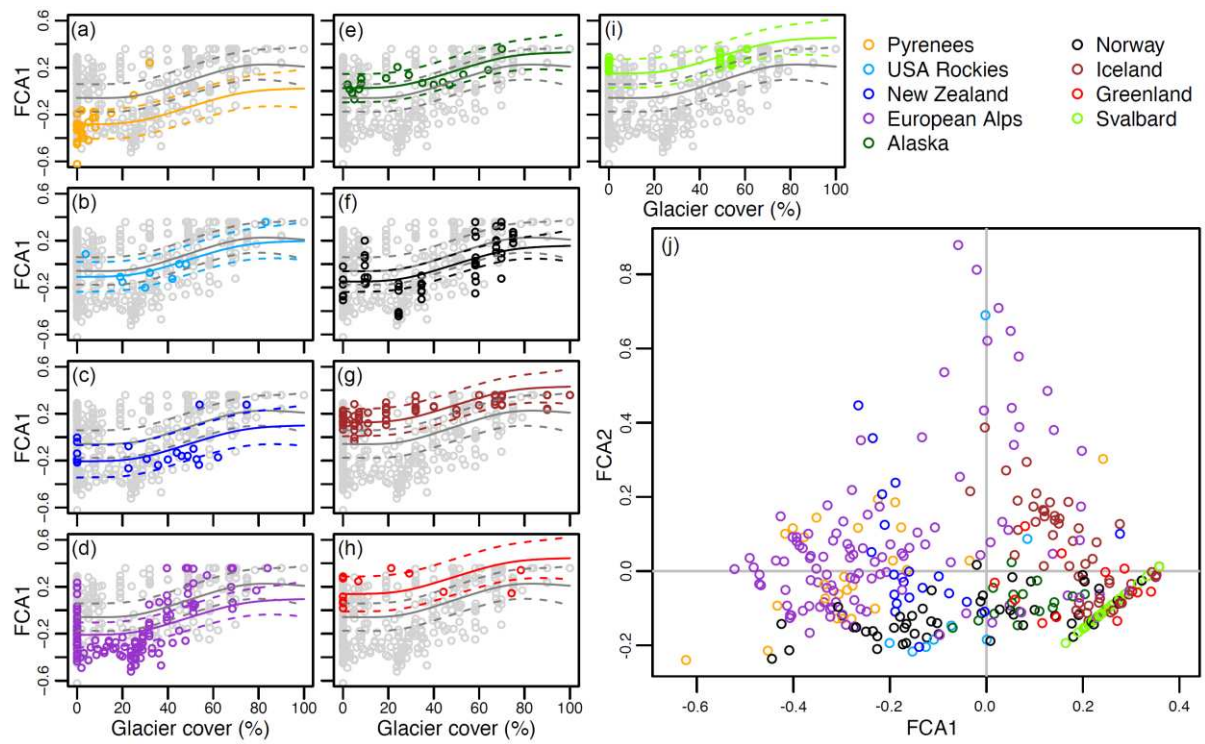
Original text: FRic increased significantly with less glacier cover ($P < 0.001$; $R^2 = 0.17$); *Updated text:* FRic increased significantly with less glacier cover ($P < 0.001$; $R^2 = 0.18$)

Original text: FEve showed more regular distributions of organisms in trait space with decreasing glacier cover ($P < 0.001$; $R^2 = 0.28$); *Updated text:* FEve showed more regular distributions of organisms in trait space with decreasing glacier cover ($P < 0.001$; $R^2 = 0.29$);

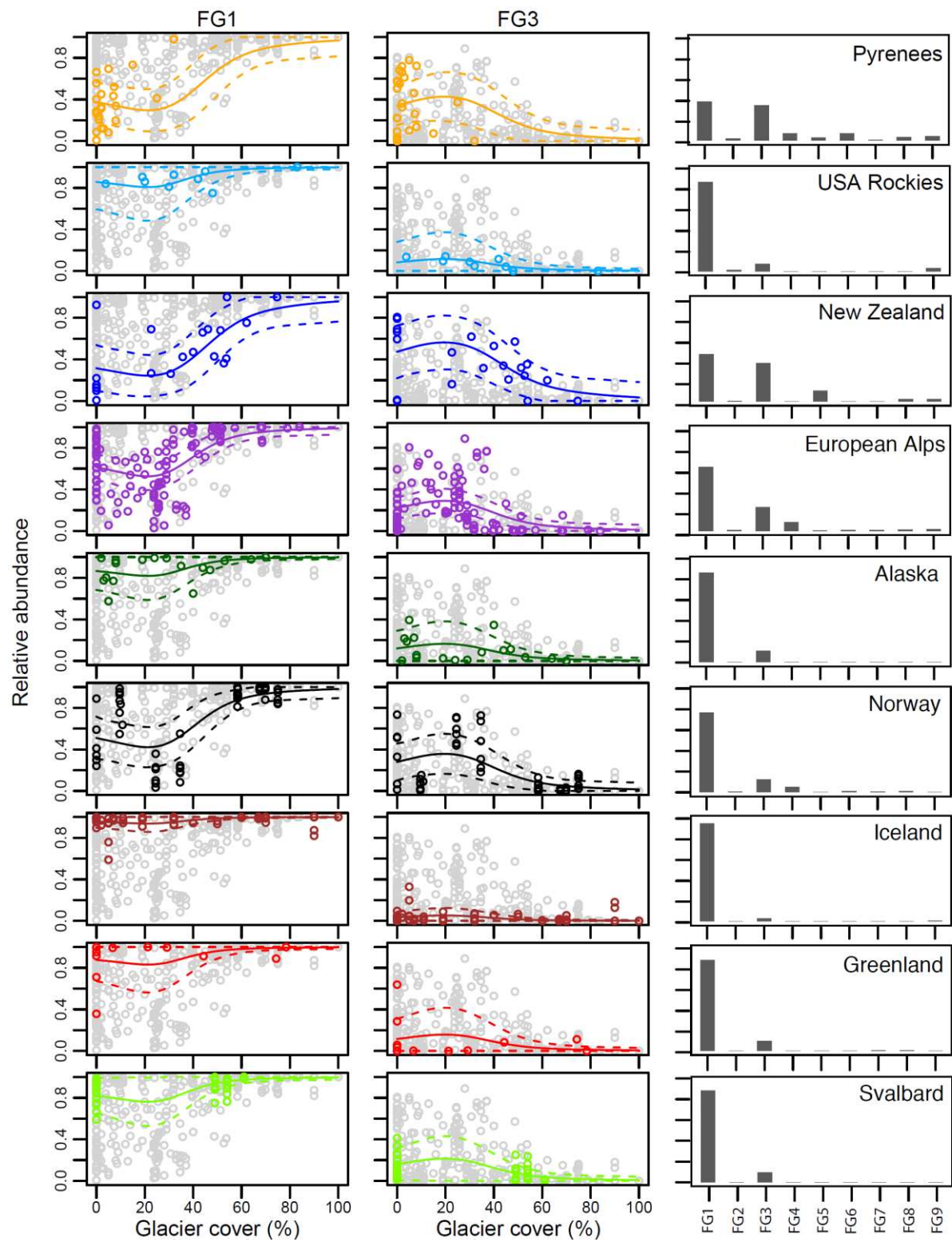
Original text: FDis ($P < 0.001$; $R^2 = 0.47$) and FEnt ($P < 0.001$; $R^2 = 0.44$) also increased significantly with declining glacier cover; *Updated text:* FDis ($P < 0.001$; $R^2 = 0.46$) and FEnt ($P < 0.001$; $R^2 = 0.44$) also increased significantly with declining glacier cover

None of these changes alter the conclusions of the study.

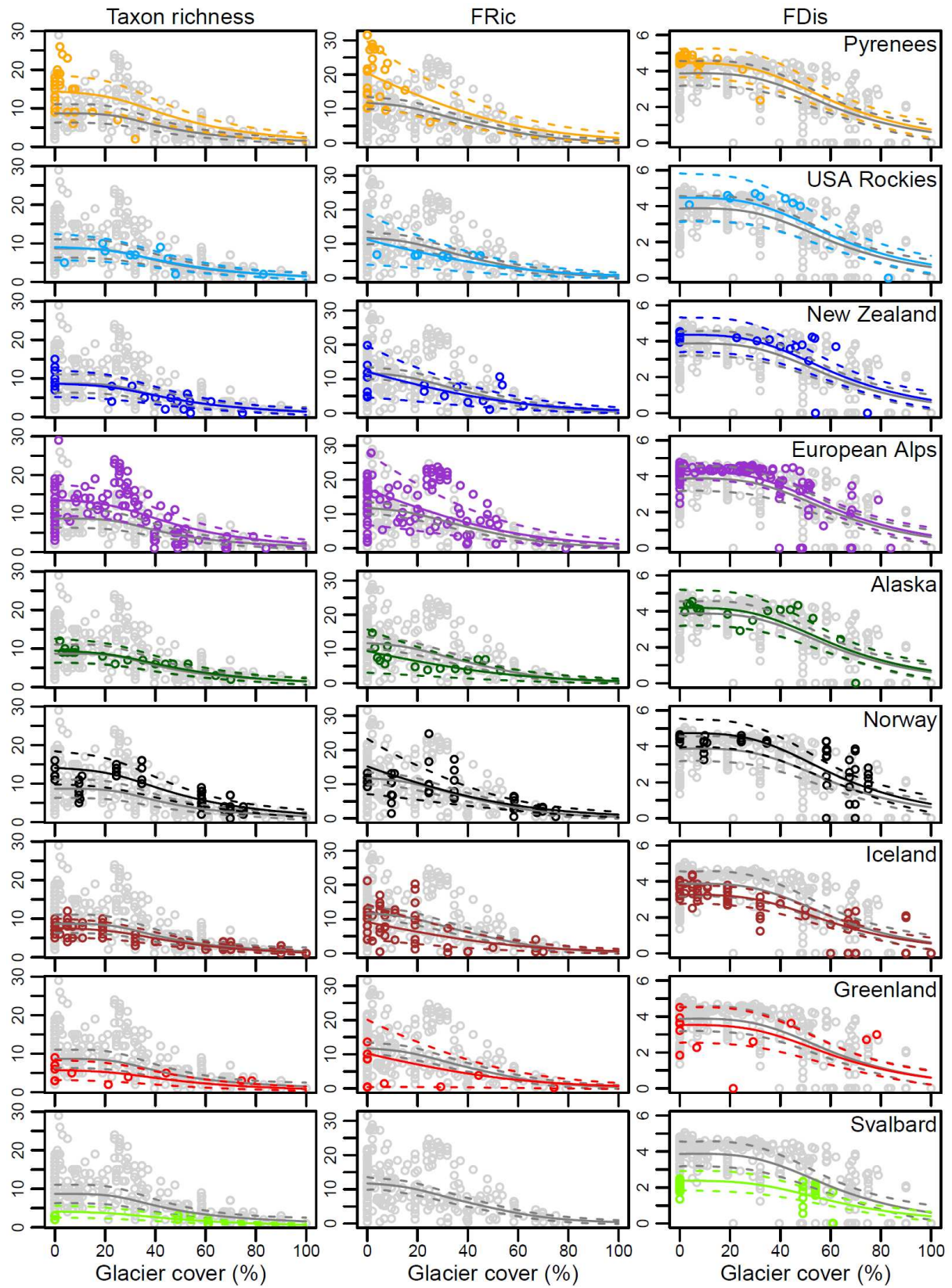
Updated Figure 1



Updated Figure 2



Updated Figure 4



Updated Figure 5

