



This is a repository copy of *Renal tissue engineering for regenerative medicine using polymers and hydrogels*.

White Rose Research Online URL for this paper:

<https://eprints.whiterose.ac.uk/201369/>

Version: Published Version

Article:

Syed Mohamed, S.M.D. orcid.org/0000-0002-7722-9634, Welsh, G.I. and Roy, I. orcid.org/0000-0001-5602-1714 (2023) Renal tissue engineering for regenerative medicine using polymers and hydrogels. *Biomaterials Science*, 11 (17). pp. 5706-5726. ISSN 2047-4830

<https://doi.org/10.1039/d3bm00255a>

Reuse

This article is distributed under the terms of the Creative Commons Attribution (CC BY) licence. This licence allows you to distribute, remix, tweak, and build upon the work, even commercially, as long as you credit the authors for the original work. More information and the full terms of the licence here:

<https://creativecommons.org/licenses/>

Takedown

If you consider content in White Rose Research Online to be in breach of UK law, please notify us by emailing eprints@whiterose.ac.uk including the URL of the record and the reason for the withdrawal request.



eprints@whiterose.ac.uk
<https://eprints.whiterose.ac.uk/>



Cite this: DOI: 10.1039/d3bm00255a

Renal tissue engineering for regenerative medicine using polymers and hydrogels

Syed Mohammad Daniel Syed Mohamed, ^a Gavin I. Welsh ^b and Ipsita Roy ^{*a}

Chronic Kidney Disease (CKD) is a growing worldwide problem, leading to end-stage renal disease (ESRD). Current treatments for ESRD include haemodialysis and kidney transplantation, but both are deemed inadequate since haemodialysis does not address all other kidney functions, and there is a shortage of suitable donor organs for transplantation. Research in kidney tissue engineering has been initiated to take a regenerative medicine approach as a potential treatment alternative, either to develop effective cell therapy for reconstruction or engineer a functioning bioartificial kidney. Currently, renal tissue engineering encompasses various materials, mainly polymers and hydrogels, which have been chosen to recreate the sophisticated kidney architecture. It is essential to address the chemical and mechanical aspects of the materials to ensure they can support cell development to restore functionality and feasibility. This paper reviews the types of polymers and hydrogels that have been used in kidney tissue engineering applications, both natural and synthetic, focusing on the processing and formulation used in creating bioactive substrates and how these biomaterials affect the cell biology of the kidney cells used.

Received 15th February 2023,
Accepted 21st June 2023

DOI: 10.1039/d3bm00255a

rsc.li/biomaterials-science

Introduction

About 10% of the world's population is affected by kidney diseases.¹ It is considered a global burden by World Health Organisation, with 5–10 million deaths estimated annually due to this condition.² Kidney failure or end-stage renal disease (ESRD) occurs when chronic kidney disease reaches an advanced state with the kidney having less than 15% of its

^aDepartment of Materials Science and Engineering, Faculty of Engineering, University of Sheffield, Sheffield S37HQ, UK. E-mail: i.roy@sheffield.ac.uk

^bRenal Bristol, Translational Health Sciences, Bristol Medical School, University of Bristol, Bristol BS1 3NY, UK



Syed Mohammad Daniel Syed Mohamed

He has authored and co-authored six papers in peer-reviewed journals while studying PHAs as a biomaterial. The Government of Malaysia has funded his PhD under the "Excellence Student Programme" scholarship.

Syed Mohammad Daniel Syed Mohamed is a PhD student from the Department of Materials Science and Engineering, The University of Sheffield, Sheffield, United Kingdom. He completed his Bachelor of Science (BSc) and Master of Science (MSc) degrees from the University of Malaya, Kuala Lumpur, Malaysia. He has over eight years of experience in materials science and characterisation, focusing on polyhydroxyalkanoate (PHAs) biopolymers.



Gavin I. Welsh

Bristol, working for six years as a research fellow in the Department of Biochemistry. He is currently a Professor in Renal Cell Biology at Bristol Renal.

Professor Gavin Welsh graduated with a degree and a PhD in Biochemistry from the University of Bristol. After four further years at Bristol doing postdoctoral research, he spent two years at the University of Kent at Canterbury before being awarded an EMBO Long Term fellowship to work for two years in the Virology and Cellular Immunology Unit at the Institute Pasteur, Paris, France. He then moved back to the University of



usual efficiency both as a crucial excretory organ to filter the blood and in maintaining the homeostatic balance in humans. The most common causes that lead to kidney failure are diabetes and high blood pressure. ESRD is categorised into two major groups, acute kidney diseases and chronic kidney diseases.

Acute kidney disease (AKD) or acute kidney injury (AKI) is defined as the rapid deterioration of kidney functionality, usually within hours, which involves structural damage and loss of functionality.^{3,4} These conditions are incurred abruptly, typically due to a physical blow during an accident, by a severe infection or sepsis,⁵ or ischemia; restriction of blood supply to carry oxygen to tissues,⁶ and kidney reperfusion that causes tissue injury.⁷ Besides that, autoimmune diseases may also contribute to this type of kidney failure, such as systemic lupus erythematosus, when autoimmune antibodies attack body tissues, and vasculitis, when the immune system attacks and causes detrition of blood vessels.⁸ Current diagnosis of AKI is based on the drop in glomerular filtration rate (GFR) value, and the elevation of serum creatinine (sCr) level, and urine output. These criteria classify AKI, as laid out in RIFLE staging, or risk-injury-failure-loss-ESRD, by assessing the GFR post-injury.³

Chronic kidney disease (CKD) happens when a kidney fails due to some detrimental effects on the vessels within the kidney, especially in the glomerulus. They mostly give rise to problems specific to the glomerular vasculature and the nephrotic tubular structure, such as tubulointerstitial inflammation, tubulointerstitial fibrosis, glomerulosclerosis, glomerulonephritis and glomerular hypertrophy. Glomerulonephritis is the inflammation of the glomerulus due to certain conditions which remove its ability to filter blood. Just like AKI, the effect can be assessed by the kidney's GFR. Besides GFR, albuminuria, the presence of albumin or protein in the urine

also indicates a CKD problem.⁹ Common causes of CKD include high blood pressure when continuous strain damages small vessels within the kidney¹⁰ and diabetes, caused by metabolic changes due to hyperglycaemia.¹¹ There are several other causes, including autoimmune disease such as lupus nephritis,¹² a congenital condition such as polycystic kidney disease, a state where the kidney contains multiple fluid-filled cysts,¹³ neuropathy such as diabetic and obstructive nephropathy,¹⁴ and also urinary tract condition such as reflux nephropathy, a condition where kidney scarring happens due to urine backflow from the bladder towards the kidney,¹⁵ can cause CKD. These conditions damage the kidney, initially affecting filtration efficiency and, eventually, its overall functionality, both mechanically and physiologically.

This article reviews current treatment options for kidney diseases and explores the progress made in engineering kidney tissue. The current treatment for CKD and ESRD has been briefly described. Then, the need for kidney tissue engineering for regenerative medicine purposes is emphasised along with current strategies that have been used. The article continues with a detailed review of materials, specifically polymers and hydrogels, both synthetic and natural, used in exploring their compatibility with kidney cell culture. The content primarily focuses on using biomaterials in research efforts and strategies to develop functional kidney tissues by utilising these materials through fabrication and modification. This review will shed light on the advancements and challenges in creating functional kidney tissues for potential therapeutic interventions by examining these biomaterials, their properties, and their applications in kidney tissue engineering.

Current treatment for CKD and ESRD

Current treatment options for ESRD are inadequate as there is a lack of suitable donor organs for transplantation, and conventional haemodialysis acts merely as a filter without replacing the normal physiological, metabolic, endocrine and regulatory functions of the kidney.^{3,4} Hence, novel treatment approaches are urgently required. There is increasing interest worldwide in developing a bioartificial kidney using tissue engineering. This is a difficult problem since the kidney is a complex organ and consists of at least 26 types of cells operating in a single system.^{16–19}

Haemofiltration by dialysis

There are two well-known approaches to addressing CKD and ESRD. One approach is dialysis, an artificial way of undergoing haemofiltration that the diseased kidney lacks. This method was invented by a Dutch physician, Willem Johan Kolff, in the 1940s using a tank equipped with cellulose membrane and tubing that allows blood to flow out of the patient's body into the haemofiltration unit. The Kolff-Bringham dialyser uses the osmosis principle to diffuse the waste and excess fluid across the membrane into the dialysate. His dialyser prototype pioneered the modern dialysis machine.²⁰ Peritoneal dialysis is



Ipsita Roy

Professor Roy is a Professor of Biomaterials, the Department of Materials Science and Engineering, Faculty of Engineering, University of Sheffield (USFD). She obtained her doctorate at the University of Cambridge. Her postdoctoral work was at the University of Minnesota, USA. IR jointly leads the Advanced Biomedical Materials CDT with the University of Manchester and is the Biomaterial Lead from

Sheffield at the Henry Royce Institute. She is part of the Steering Committee of Royce Bio. She has published over 100 papers in biomaterials journals and has delivered plenary lectures at numerous national and international conferences (H-index: 45 and 8566 citations).



another type of dialysis that relies on the abdominal lining, *i.e.* the patient's peritoneum to perform haemofiltration. A dialysate is introduced within the peritoneal cavity, allowing excess fluid and waste from the blood vessels to pass through the peritoneal membrane by diffusion.²¹ The dialysate is later drained and replaced with a fresh one.

Dialysis is the main and much accessible treatment that has been used worldwide since kidney failure affects millions of people worldwide. According to the United States Renal Data System (USRDS) 2020 Annual Data Report, more than 500 000 people in the United States and 2.6 million worldwide undergo dialysis per annum.²² Therefore, kidney failure is very common; and because of this, dialysis is also common and deemed as a conducive treatment. However, it does not improve the quality of life of a patient. They need to be attached to the dialyser for a standard four-hour session frequently, through a surgically made arteriovenous fistula, up to four times a week.

Dialysis is also very expensive and requires several types of drugs to balance some dialysis-induced conditions. One of the common drugs used is an erythropoiesis-stimulating agent to address anaemic episodes among diabetic patients and allow the formation of new blood cells.²³ Hypertension is also common among the patients, and medication such as angiotensin-converting enzyme (ACE) inhibitor, angiotensin II receptor blockers (ARBs), beta-blockers and calcium channel blockers help to decrease complications such as heart conditions.²⁴ Other supplements, help in alleviating deficiencies such as iron and vitamin D, while a phosphate binder reduces phosphate in the blood due to ineffective phosphate elimination by the impaired kidney.

Kidney transplantation

Kidney transplantation is another treatment for CKD and ESRD, mainly for patients suffering from glomerulonephritis, diabetic nephropathy and polycystic kidney disease.¹¹ The procedure introduces a healthy kidney into a patient, surgically, to replace the diseased one. The first ever successful human kidney transplant was done by Dr Richard Lawler in Illinois, USA, on a lady with polycystic kidney disease.¹² Through the procedure, a healthy and functional kidney is harvested from a living donor or a deceased donor and transplanted into the patient.

Although this procedure is ideal in significantly improving the quality of life for the patient with kidney failure, the major hurdle is finding a suitable donor. In fortunate cases, the patient might have a donor among family members willing to donate one of the pairs and is physiologically compatible. Otherwise, the patient must be on an extraordinarily long waiting list to get an organ from a deceased donor. The challenge continues as the patient needs immunosuppressive agents such as calcineurin inhibitors, antiproliferative agents that suppress immune cells, and corticosteroids to reduce inflammation. Some of them might need to start a diabetic medication regime for new-onset diabetes after transplantation or NODAT, or even those with diabetes pre-transplantation.²⁵ Given that some patients are not accustomed to a

healthy lifestyle, they are prone to relapse and face the risk of failure of the transplanted kidney.

The available treatments for kidney failure, which are haemodialysis and kidney transplantation, provide an option to manage renal patients. While they have proven to prolong life expectancy, their effectiveness and feasibility may vary across individuals. Therefore, personalised approaches are necessary since the needs of each patient needs are different.

Kidney tissue engineering

Tissue engineering research provides the opportunity to mimic organs and potentially develop fully functional organs to replace diseased or damaged ones. A suitable material that serves as a biological substrate is vital to promote the required cell proliferation, maintenance, and maturation, to allow functional tissues to develop at the cellular level. There are three aspects of kidney functionality that need to be addressed in any model, specifically in kidney tissue engineering; haemofiltration (glomerular cells), reabsorption of water (tubule cells) and metabolic and endocrine activities (interstitial cells).¹⁸

Organ shortage is the main reason of why transplantation is not usually an option in the event of organ failure, including the kidney. Tissue engineering strives to address this problem by developing an improved treatment option. Since tissue engineering is a type of personalised medicine, this approach would reduce the risk complication and be less heavily dependent on medication by considering patient's immunological and physiological need, case by case.²⁶ Also, tissue engineering offers a step forward in developing an advanced diagnostic tool to detect disease in patients without major intervention, in the form of *in vitro* organ models. Again, the diagnosis can be tailored to a specific patient's condition and generate results for precise treatment regimes.

Kidney tissue engineering has been attracting major attention and in multiple ways, scientists are attempting to recreate a functional kidney. Since it is a relatively new area, it is important to understand (1) the cellular biology of kidney cells and potential materials that may support the growth of kidney tissue; (2) the selection of suitable biomaterials is crucial, especially with respect to biocompatibility, *i.e.* the lack of any adverse effects that hinder development of functional tissue; and (3) the fabrication of the biomaterial should be precise in order to facilitate tissue engineering in three-dimensional scaffolds to imitate the native structure of cell organisation in the kidney. Other methods, such as enhanced biocompatibility induced by material modification and creation of a drug release system, provide added value to the engineered scaffold.

The materials most frequently used in kidney tissue engineering are polymers and hydrogels. Polymers are known for their processability to replicate kidney features in terms of mechanical properties. In addition, polymers can be blended with bioactive components such as an extracellular matrix and growth factors that would in turn enhance the bioactivity of the polymer.^{27,28} Hydrogels, on the other hand, are widely



used to imitate the extracellular matrix *in vivo*, as well as carriers for the cells, and are commonly used in cell therapy approaches. Furthermore, polymers and hydrogels are very robust and amenable to majority of the material processing techniques, for example, 3D printing and electrospinning for shape-tailored scaffolds, salt-leaching for introducing porosity in polymers,²⁸ polymer emulsification method to control the size of cells encapsulation, and development of bioinks for spatially controlled cell culture using 3D printing of hydrogels.²⁹

Brief overview of kidney tissue engineering: strategies and application

Several attempts at kidney regeneration have been undertaken using allotransplantation of kidney components with the goal of restoring the original functionality of the kidney. Current work is mainly based on small animal models, *i.e.*, rats and mice. Even though the animal study may not be considered a perfect representative of human physiological makeup, especially by direct comparison to the human kidney's complexity, it serves as a preliminary tool in shedding light on certain biological mechanisms, in addition to gaining validation through proof-of-concept experiments. Some approaches include the implantation of embryonic nephros into the kidney, implantation of nephros beneath the renal capsule, *in situ* kidney regeneration, utilisation of stem cells and bioengineering of an artificial kidney.¹⁸

Allograft of kidney tissue

Starting with the allograft approach, researchers introduced foetal renal tissue into a specified location, such as the renal capsule.^{30–33} However, this approach is only partially sustainable, with rejection in most cases. One set of studies focused on metanephrons, a type of renal tissue that is in the early structures involved in kidney development in an embryo. In murine models, allogenic grafts of embryonic metanephrons were transplanted into the anterior eye chamber and the renal capsule within the renal cortex, as a proof-of-concept study. These grafts showed high vascularity and the formation of new nephrons. Also, glomerular and tubular cells in the graft exhibited cytodifferentiation. However, graft rejection occurred after approximately 16 days.³⁰ Another approach involved the allograft of adult and foetal renal tissue beneath the murine renal capsule. The adult renal tissue experienced rejection after 10 days, while the foetal renal tissue demonstrated growth, neovascularization, and limited signs of rejection after 10 days.³¹ In a different study, renal tissue derived from foetal midgestational tissue grafts were placed beneath the renal capsule. It was observed that the graft had a prolonged survival due to the lack of major histocompatibility complex or MHC, class I and II mRNA production. Furthermore, the transplantation of human foetal renal tissue revealed that the immune response leading to kidney rejection was dependent on the cell source, with foetal grafts exhibiting a favourable allogenic response for implantation.^{32,33}

On the other hand, an extraordinary attempt with a chimeric animal model approach involving kidneys from murine and avian sources observed the development of glomeruli and tubules, which extended to the medulla of the kidney after transplantation.³⁴ In another study a similar approach was adopted, utilising gelatine microspheres as a cell carrier for rat kidney tubular cells in a cellular therapy approach. Some neovascularisations had occurred that may promote the development of healthy kidney structure.³⁵

In summary, the tissue engineering approach involving the implantation of early-stage kidney tissue derived from an embryo was deemed feasible in repairing damage in the injured kidney. This tissue possess a greater capacity for proliferation and differentiation ability due to the availability of progenitors that can condition themselves in the new environment. This is crucial in developing fully functional and properly organised tissue. In contrast, the readily developed and differentiated adult kidney tissue may not properly adapt and thrive to give rise to a functional tissue; hence the chance of rejection is high. However, further optimisation still needs to be carried out since the goal is to enable essential functions of the kidney, especially haemofiltration and water reabsorption. The studies are summarised in Table 1.

Development of bioartificial kidney

The main aim of developing a bioartificial kidney is to address shortages in artificial kidneys. Bioartificial kidneys work with the incorporation of renal cells within an engineered artificial construct, which would extend the device's functionality with the presence of metabolically active components. Since the kidney's primary function is to filter blood, hence, the focus is to create a bioartificial filtration barrier that can mimic *in vivo* haemofiltration mechanism. The tissue engineering strategy for this objective is to create a confluent monolayer of kidney cells on a support material. Then, the cell-scaffold hybrid will serve as a filtering membrane while sustaining cellular growth over time.

The emphasis of the bioartificial kidney is the presence of living cells within the construct. Hence, their metabolic activities are the key focus in ensuring optimum performance and determining the feasibility of the artificial environment. In renal epithelium, for instance, metabolic activities such as ammoniogenesis; a way to excrete excess acids, production of calcitriol; responsible for the activation of vitamin D₃, and cytokine response to endotoxin are the indication of its viability with proper functionality.³⁶ Renal interstitial cells, on the other hand, produce a hormone called erythropoietin responsible for blood production.³⁷

A limited number of bioartificial kidney devices have been developed with viable renal cells. Examples are the renal assist device (RAD) and bioartificial renal epithelial cells system (BRECS), which use proximal tubule cells and renal epithelial cells, respectively. These devices have been involved in pre-clinical trials in animals in the form of extracorporeal circuit devices. They have successfully led to blood filtration and restoration of metabolic components of blood (Table 2).



Table 1 Kidney tissue growth approaches

Cells/tissue involved	Source	Strategies	Results	Ref.
Metanephrons; nephron	Murine	Allogenic graft of embryonic metanephrons into the anterior eye chamber and renal capsule, within the renal cortex	Highly vascularised New formation of nephrons Cytodifferentiation of glomerulus and tubular cells Graft rejection after 16 days	30
		Allograft of adult and foetal renal tissue beneath the renal capsule over the renal parenchyma	Adult renal tissue: rejection after 10 days Foetal renal tissue: growth and neovascularisation after 10 days, little sign of rejection	31
		Midgestational renal graft beneath the renal capsule	Prolonged survival of the immature graft due to lack of major histocompatibility complex (MHC) class I and II mRNA production	32
		Transplantation of human foetal renal tissue	Immune response of kidney rejection dependent on cell sourcing (foetal or adult) Foetal graft has allogenic response favourable for implantation	33
Tubular cells	Murine and avian	Creating chimeric kidney by implanting avian and murine embryonic renal tissue to avian mesonephric mesoderm or cortex of the murine neonatal kidney	Quail: bilobed organ developed	34
		Implantation of nephrons into tunnels fashioned in the cortex which are eventually incorporated into the collecting system when the glomeruli were vascularised, formation of proximal tubules, extension of metanephric tubules	Mouse: postnatal transplanted metanephric tissue grew and developed glomeruli, proximal tubules and cords of cells extended to the medulla	
Tubular cells	Rodent	Encapsulating kidney cells into cross-linked gelatine microspheres injected orthotopically and conducted <i>in vivo</i> assessment by histological evaluation	Observed non-excessive fibro cellular response and some interstitial inflammation and neovascularisation	35

Table 2 Preclinical trials of bioartificial kidney in animals

Animal	Cells involved	Material involved	Strategy	Results	Ref.
Uremic dogs	Human and porcine proximal tubule cells	Polysulphone hollow fibres	Development of RAD containing human renal cells in an extracorporeal circuit	Increased excretion of ammonia, glutathione metabolism and 1,25-dihydroxyvitamin D ₃	17 and 38
Anephric sheep	Renal epithelial cells	Porous carbon discs within carbonate housing	Usage of BRECS with continuous flow peritoneal dialysis circuit benefiting the peritoneal dialysis fluid to sustain the cells in the device	Retained neutrophil oxidative activities Improved the immunological homeostasis and endocrinal needs in uremic condition	36

Despite the favourable outcome, the cellular component of the RAD approach and BRECS only reinstate the essential metabolic activity of kidney cells. The involvement of a synthetic haemofiltration device equipped with a size-selective membrane is still essential to remove toxins from the blood. Hence, blood ultrafiltration still relies on artificial components within the system. Hence, the need to recreate a bioartificial filtration barrier to replace the synthetic unit is imperative in completing the endeavour towards developing a bioartificial kidney.

The development of a bioartificial filtration barrier mainly aims to re-establish the distinctive feature of the glomerulus in filtering blood. In addition, the presence of cells is allowing a myogenic response such as in the blood vessel, assumed to be from endothelial cells for renal auto-regulation to happen in order to regulate the glomerular blood flow.³⁹ The engineered construct will provide more physiological relevance to the kidney tissue engineering model.⁴⁰

Polymers in kidney tissue engineering

Polymers have emerged as potential materials in scaffold development in tissue engineering, including kidney tissue engineering. Their versatile properties allow easy fabrication, which is important to mimic the extracellular matrix in native tissue in terms of integrity and bioactivity. They are well-known to play an important role in creating a suitable substrate and providing structural framework to allow cell proliferation and differentiation. In kidney tissue engineering, the polymeric material should ideally possess mechanical properties that allow withstanding the shear force from blood flow and porosity to allow gaseous exchange and nutrient transport in addition to being biocompatible. Polymers can be synthetic or natural, and both type exhibit benefits towards perfecting the design of the kidney tissue engineering scaffold. Synthetic polymers are usually known for structural integrity and tailorable degradability, meanwhile natural polymers are known to be highly biocompatible for the application.



Synthetic polymers

In general, synthetic polymers exhibit tailorability and customisable properties to fit a specific application. For instance, polylactic acid and polyglycolic acid can be synthesised so that the product would possess the specific chemical composition needed. These can even be co-synthesised to produce polylactic-*co*-glycolic acid in order to further broaden the range of mechanical properties, and controlled degradation.^{41,42}

Polysulphone. Polysulphone (PS) is a thermostable and high mechanical strength polymer with great potential as a base material for developing biological membranes. It is a type of polymer with aromatic-sulphonyl monomers connected by ether linkages and has a reputation for being biocompatible, offering an apt blood ultrafiltration rate and is efficient in separating target solutes (Fig. 2). Synthesis of PS is usually carried out *via* a nucleophilic substitution cascade reaction between Bisphenol A and 4,4'-dichlorodiphenyl sulphone, DCDPS.⁴³ Neat PS has a drawback as it can activate platelet adhesion, leading to neutrophil production of reactive oxygen species.⁴⁴

PS has significant potential in developing bioartificial kidneys to perform haemodialysis due to its rigidity.^{45–47} Scientists have created a more functional material, improving its physical attributes, such as hydrophilicity, by blending with reactive components and surface modification.⁴⁸ A clinical study of a bioartificial kidney equipped with a PS membrane has been created using Lewis lung cancer-porcine kidney 1 or LLC-PK1 and Madin–Darby canine kidney (MDCK) cells (Fig. 1). The cells were seeded onto PS coated with extracellular matrices (ECM) such as collagen type I, laminin and pronectin-F and then assessed for monolayer formation and functionality.⁴⁹ The device managed to decrease the amount of urea, uric acid, and creatinine by up to 50% and β_2 -microglobulin under 20 mg L^{-1} in a human patient.⁵⁰

Ongoing kidney tissue engineering studies that utilise PS biocompatibility have led to the development of superior bioartificial devices for haemodialysis. One study focused on attaching two types of renal cells, human kidney 2 (HK-2) proximal tubule cells and Madin–Darby canine kidney (MDCK) epithelial cells, to fabricate PS hollow tubes. The tube fibres were prepared by extruding polymer-in-solvent solution through double injection nozzles with different diameters to create different tube curvatures. Assessment of the water flux showed significant ultrafiltration properties, between $190\text{--}256 \text{ L m}^{-2} \text{ h}^{-1}$, with a high bovine serum albumin rejection percentage, *i.e.* above 70%. All cells managed to achieve confluent growth on the materials. Ultimately, higher curvature or lesser diameter of the hollow tubes promoted cell functionality, allegedly due to mechanical stress akin to natural minuscule tubular kidney architecture.⁴⁶

Meanwhile, another PS fibre membrane fabrication was investigated for its enhanced biocompatibility and ability to remove uremic toxins. Before cell culture, the membrane was coated either with a single coat of *D*- α -tocopheryl polyethylene glycol 1000 succinate; or a double coating of *L*-3,4-dihydroxyphenylalanine (*L*-DOPA) and human collagen type IV to

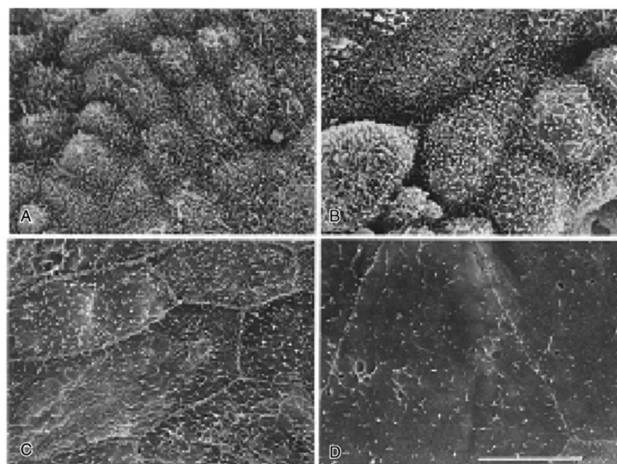


Fig. 1 Electron micrographs of MDCK cells, renal tubular cells on PS (A) one week, (B) two weeks, (C) three weeks, and (D) four weeks. The scale bar size is unknown. Republished from Saito, 2004 with permission.⁵⁰

improve hydrophilicity and biocompatibility towards human blood. Human embryonic kidney cells 293 (HEK 293) were used and observed to form a confluent monolayer on the coated membrane, indicating improved biocompatibility. As tested in the study, the membrane also managed to effectively remove uremic toxins, such as urea, creatinine, and phosphorus, to a significantly greater extent than the commercial PS membrane. This suggests this fibre membrane has excellent potential for developing bioartificial kidneys as a 'living' haemofilter.⁴⁹

PS, specifically PES-50, was coated with *L*-DOPA and human collagen type IV before cell culture involving a conditionally immortalised proximal tubule epithelial cell (ciPTEC) line. The optimised coating promoted water permeability and cell monolayer formation, as well as retained proteins such as bovine serum albumin and immunoglobulin G.⁵¹ A similar investigation involving different fabricated PS membrane surface designs were carried out. PS was blended with polyvinyl pyrrolidone K90 or PVP and made porous by a phase separating micro-moulding technique,⁵² using a specified silicon mould design produced by photolithography. CiPTEC were also used in this study, cultured onto them, and observed. A confluent monolayer was easily formed by the cells on the membrane with small features and wider gaps without any coating compared to the larger ones. Different topographical arrangements of PS were concluded to have the ability to influence cell orientation and morphology, defined by the size and gaps of micro-features that are distributed on the membrane.⁵³

Poly- ϵ -caprolactone. Poly- ϵ -caprolactone, or PCL, is a widely known synthetic polymer in tissue engineering, especially in bone reconstruction research and as a drug delivery material. It is typically synthesised *via* ring-opening polymerisation of ϵ -caprolactone using a catalyst, usually stannous octanoate.^{54,55} Bio-based PCL is also possible to obtain through the treatment



of saccharides with ethanol or acetic acid, conversion into cyclohexanone by chromic acid and later into ϵ -caprolactone through a Bayer-Viliger oxidation reaction.⁵⁶ PCL is known for its biodegradability, biocompatibility, and thermoplastic properties, with a melting point of around 60 °C. PCL is also deemed as a suitable material for developing a bioartificial kidney in kidney tissue engineering for its processability.

The work by Basu *et al.*⁵⁷ assessed and compared the interaction of different kinds of polymer with kidney cells. At first, the use of PCL was not promising; direct implantation of PCL beads into healthy adult Lewis rat kidneys caused an inflammatory reaction in the first week, which continued leading to dilation and hydronephrosis after 4 weeks. Direct seeding of sunitinib-resistant renal carcinoma, or SRRC cells onto PCL also showed poor adherence after one day of culture.⁵⁷ Despite this, modification of PCL has resulted in it becoming a suitable kidney tissue engineering material. Physical modification of PCL has been carried out by electrospinning, a method that extrudes polymer fibres with an electrical charge from melted polymer or polymer solution. Work by Burton *et al.*,⁵⁸ for instance, produced different types of PCL-electrospun fibres, random, aligned, and cryogenic, for kidney tissue engineering purposes. The polymer fibre scaffolds were plasma-treated to introduce hydrophilicity before cell culture. The fibres supported the growth of human kidney primary epithelial (RC-124) cells regardless of fibre orientation. However, the growth was improved with larger diameters, presumably due

to a higher degree of porosity that promotes cell incorporation.⁵⁸ Another group incorporated laminin, a component of the extracellular membrane, into the electrospun PCL to form a hybrid scaffold to enhance the bioactive properties. This scaffold supported RC124 kidney cell growth (Fig. 3). The cells were metabolically active across 21 days of culturing and showed an increase in E-cadherin expression, a component responsible for cell junction formation.⁵⁹

Another exciting approach is a way to use a PCL-based material with polyethylene glycol, or PEG, as a coating material. ϵ -caprolactone was co-synthesised with PEG to produce PCL-PEG-PCL, which is more hydrophilic due to the PEG component.⁶⁰ Neat PCL was initially prepared by Fused Deposition Modelling (FDM) to create a 3D scaffold with a criss-cross design, later spray-coated with the triblock copolymer. The coated PCL was reported to promote three times higher cell growth of embryonic kidney cells than non-coated PCL, with no cytotoxicity response.⁶¹

Other PCL modification approaches to promote bio-responsive properties have been undertaken, such as surface modification with arginyl-glycyl-aspartic acid or an RGD peptide motif to enhance the cell attachment.^{62,63} However, this technique is yet to be explored with kidney cells as a novel functional material development.

Poly(lactic acid). Poly(lactic acid) or PLA is another biodegradable and biocompatible synthetic polymer widely used in medical and biomedical applications (Fig. 2). It is derived

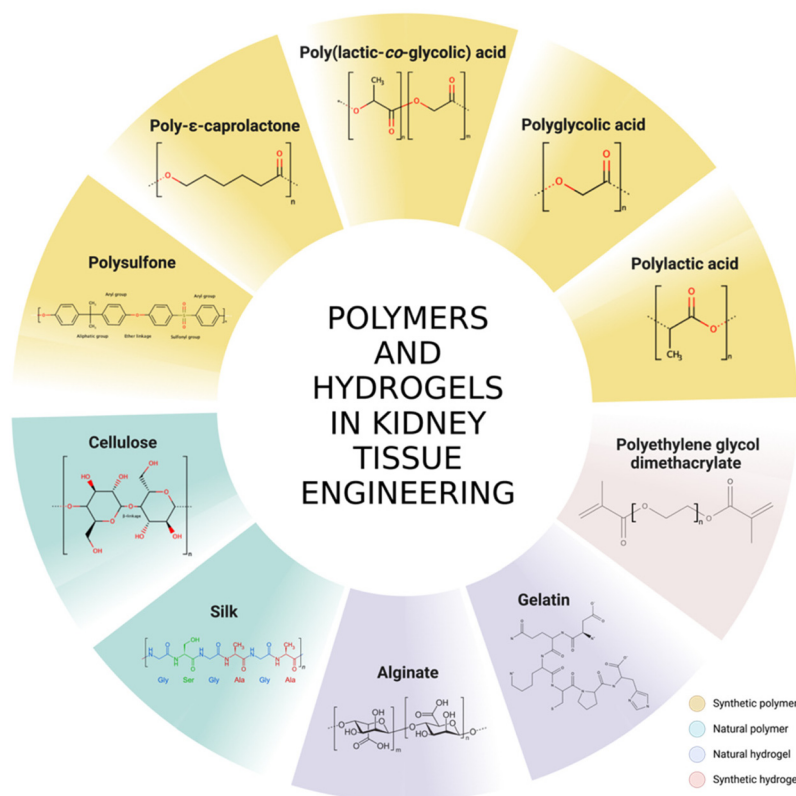


Fig. 2 The molecular structures of polymers and hydrogels used in kidney tissue engineering.



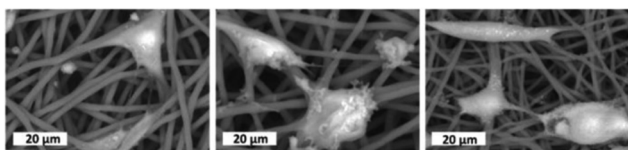


Fig. 3 RC-124 cells, a type of renal epithelial cells on PCL electrospun fibres scaffold. (a) Neat PCL, (b) PCL prepared by blending with laminin, and (c) PCL prepared by emulsification with laminin. Adapted from Baskapan & Callanan, 2021.⁵⁹ Copyright © the authors.

from either lactic acid, or its cyclic dimer form called lactide, which can be synthetically produced or made from bacterial fermentation. The polymerisation of the monomer involves a water removal reaction called polycondensation, with a longer condensation period yielding higher molecular weight polylactic acid.^{64,65} In tissue engineering, PLA has its niche as a base material for scaffolds in bone tissue regeneration.⁶⁶ Kidney tissue engineering utilising PLA has recently taken place, showing potential for PLA to be a robust biomaterial for this application.

A cytocompatibility test was carried out using primary kidney cells derived from rats on electrospun PLA fibres of different diameters. The scaffold fabrication produced fibres of different diameters; $0.88 \pm 0.16 \mu\text{m}$ for small fibres, $2.46 \pm 0.43 \mu\text{m}$ for medium fibres, and $3.30 \pm 0.17 \mu\text{m}$ for large fibres. Furthermore, the introduction of a cryogenic condition when collecting the fibres also yielded a slightly larger fibre diameter at $3.71 \pm 0.36 \mu\text{m}$. Interestingly, this fibre was the best at supporting cell proliferation by having the highest DNA content after three and seven days of culture, which may be due to its higher porosity. Overall, protein assays confirmed the viability of four types of kidney cells on PLA, namely the proximal tubules, collecting ducts, podocytes, and glomerular endothelial cells (Fig. 4).⁶⁷

Another electrospinning technique was adopted to fabricate PLA for a similar application. This work addressed the hydrophobicity of PLA by adopting coaxial electrospinning with polyvinyl alcohol or PVA, which drastically increased the wettability by more than four times compared to neat PLA. A cell compatibility test was done using HEK 293 cells; however, it showed that neat PLA still performed as the best scaffold supporting up to 75% cell viability, compared to fabricated PLA fibres supporting only 35–40% cell viability. Even though fabricated PLA fibres do not demonstrate as high cell viability as neat PLA, SEM imaging confirmed that they do support the HEK 293 cell attachment.⁶⁸ It is hypothesised that neat electrospun PLA produces more porous fibres that possibly influence the attachment of cells, resulting in high viability.

Polyglycolic acid. Polyglycolic acid, or PGA, is a relatively new material in kidney tissue engineering (Fig. 2). This simple polyester, like PLA, is synthesised by polycondensation of glycolic acid or by ring-opening polymerisation of cyclic dimers of glycolic acid called glycolide.⁶⁹ Similar to PLA, the application of PGA in kidney tissue engineering is currently limited, however promising.

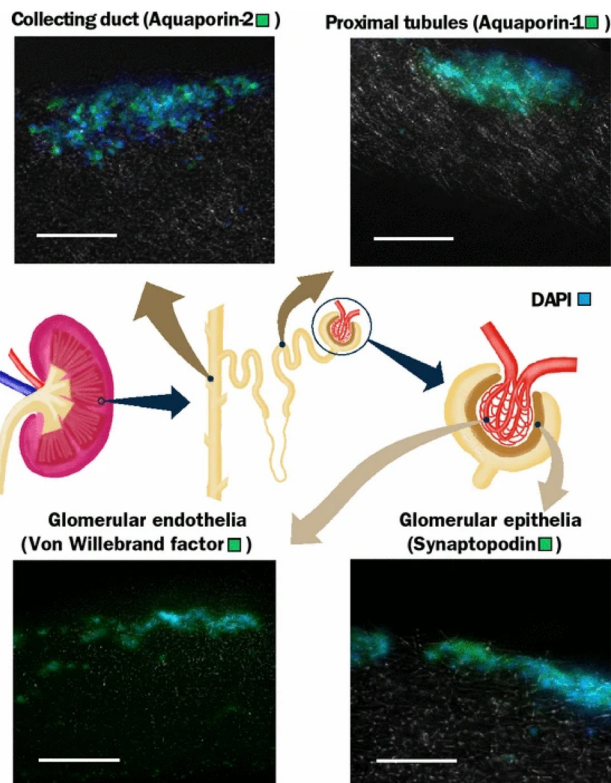


Fig. 4 Different types of renal cells culture showing expression of respective protein expression by immunohistochemical staining using a PLA scaffold at 7 days. Scale bar is 100 μm . Adapted from Burton & Callanan, 2018.⁶⁷

In a study of the effect of a 3D scaffold on glomerular cells, PGA was fabricated with fibrin gel to improve its bioactive properties upon culture. Two types of conditionally immortalized human glomerular cells were used, podocytes and glomerular endothelial cells. The unique scaffold was seeded with either mono- and co-cultures, with the co-cultures exhibiting an interesting self-assembly behaviour besides displaying good proliferation and cell adhesion patterns. Importantly, expression of collagen IV, a key glomerular basement membrane (GBM), was confirmed, showing the potential of the scaffold in developing a kidney filtration barrier.⁴⁰

Poly(lactic-co-glycolic) acid. Poly(lactic-co-glycolic) acid (PLGA) is a copolymer, co-synthesised from lactic acid and glycolic acid (Fig. 2), also by ring opening copolymerisation using catalysts.⁴¹ This novel material is well-known to be biocompatible and biodegradable. It is widely used as a drug vehicle for its tailorable erosion capability,⁷⁰ which includes research to treat kidney fibrosis.^{71,72}

An assessment of PLGA as a polymer scaffold for kidney tissue engineering was done by Basu *et al.*, who compared it with PCL.⁵⁷ A week after injection of neat PLGA particles into the medulla and cortex of the kidney of living Lewis rats, no necrosis, embolism, or infarction was observed; however, there was chronic inflammation and formation of granulomatous cells (giant cells) around PLGA at the medulla. Meanwhile,



implantation of PLGA beads showed induced embolism and acute infraction at the cortex, as well as minimal fibrosis, chronic inflammation and also formation of granulomatous cells. Despite that, the implantation of a porous PLGA scaffold equipped with magnesium hydroxide as an anti-inflammatory agent and porcine renal extracellular matrix into a nephrectomised mouse kidney demonstrated the regeneration of the glomerulus, interestingly, later restoring the kidney function for the mouse.⁷³

Silicon. There are limited reports on the use of silicon-based material in kidney tissue engineering. However, it has the potential as a good material to develop a bioartificial kidney. Biocompatibility tests with silicon-based materials have been successful with multiple types of cells in developing microelectronic mechanical systems (MEMS), with silicon as a semiconductor component for implantable medical devices.^{74,75}

Several silicon-based materials have been fabricated into a nanopore membrane, adapting sophisticated step-by-step wafering and coating techniques. The fabrication involved a set of silicon-based components, namely single-crystal silicon, polycrystalline silicon, silicon dioxide, and silicon nitride. The nanopore membrane design was developed with different pore sizes ranging from 10 nm to 500 nm as a haemofilter. Initially, human cortical tubular epithelial cells (HCTC) were grown to form a monolayer, separately with each component for cytocompatibility and showed consistent and favourable growth. Meanwhile, cell behaviour on the fabricated silicon nanopore membranes allowed cell differentiation with cilia and tight junction formations.⁷⁶

A strategy using a ribbed design membrane involving silicon and polysilicon components as a potential haemofilter in a bioartificial kidney has been developed.⁷⁷ Surface modification of silicon has also been investigated to enhance wettability and promote cell adhesion, such as by hydrosilylation.⁷⁸ Although, to date, there is a lack of reported work using silicon-based kidney tissue engineering, this material exhibits the potential to be used to successfully develop a bioartificial haemofiltration membrane, which might also be a cell-seeded 'living' membrane on a smaller scale for transplantable devices.

Natural polymers and biopolymers

Cellulose. Cellulose is a linear polysaccharide of D-glucose units linked by β -linkages. It is a major component of the plant cell wall which provides it with rigidity (Fig. 2). There are two types of cellulose, depending on the size: microcellulose and nanocellulose.⁷⁹ Both are typically extracted from plant sources; however, bacterial cellulose is a type of nanocellulose. Cellulose has been gaining attention recently as a sustainable material, used mainly as a haemodialysis membrane substitute, replacing widely used synthetic membranes and as a hydrogel for kidney tissue engineering.

There is little reported so far on utilising cellulose as a material to be used for dialysis in order to address kidney failure. MacLeod *et al.* compared cellulose membranes from regenerated cellulose sourced from cotton with polysulphone

and showed cellulose exhibits less biocompatibility and more immune response than synthetic membranes. The authors, however, concluded that the membrane replacement did not contribute to adversity for patients undergoing haemodialysis.^{71,72} In other reported studies, further fabrication of cellulose into cellulose triacetate⁷³ or cellulose diacetate⁷⁴ reduced platelet activation, making it closer to the commercial dialyser membrane properties in terms of biocompatibility for a more feasible product.

In kidney tissue engineering, the involvement of cellulose-based hydrogels has been investigated as a potential scaffold for cell growth. UPM Biomedicals has developed a product called GrowDex® nanofibrillar cellulose (NFC) hydrogel for kidney organoid growth, using primary embryonic metanephric mesenchyme of murine source (Fig. 5). The material successfully provides a 3D culture of the kidney cells and demonstrates a chemically induced nephrogenesis of the organoid.⁷⁵ This product is deemed a potential drug testing, disease model and a kidney development and regeneration study model.

Meanwhile, a unique approach to develop a cellulose-based scaffold for kidney tubule tissue engineering has been carried out using spinach and chive as base materials. The wet market-bought vegetables are decellularised using a 5% v/v sodium dodecyl sulfate (SDS) solution for 7 days. The scaffold is then coated with L-3,4-dihydroxyphenylalanine (L-DOPA) to introduce a bioactive surface to allow cell attachment. Conditionally immortalised proximal tubule epithelial cells (ciPTEC) were used to seed the scaffold. It is concluded that spinach and chives cellulose matrix are not favourable for fostering transepithelial solute exchange due to the micro-anatomical structure of the scaffold providing a lack of permeability.⁸⁰

Further work focused on developing a functional material with cellulose, specifically using bacterial cellulose for a tissue engineering application. The cellulose was produced by fermentation of *Gluconacetobacter saccharivorans* LMG 158, in parallel fed with D-glucose and cultured with the presence of carboxymethyl cellulose sodium salt and hydroxyapatite for *in situ* incorporation. The cytocompatibility of the composite material was tested using HEK 293 cells, showing high cellular

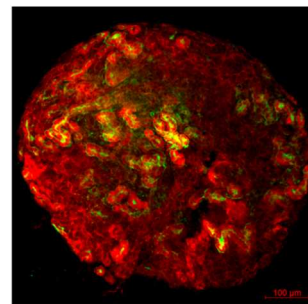


Fig. 5 Renal organoid cultured in GrowDex®. Organoids were stained with Pax2 (kidney tubules, red) and Lotus Tetragnolobus Lectin (LTL, proximal tubules, green).



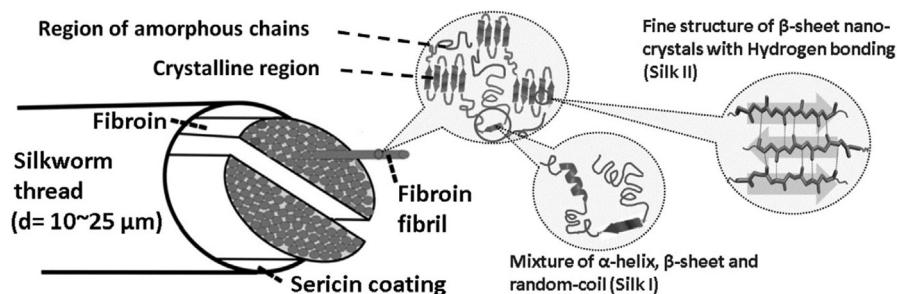


Fig. 6 Schematic diagram of silk. Reproduced with permission from Volkov *et al.*, 2015.¹⁴⁸

viability up to 97.2%.⁸¹ However, further strategies are needed to promote cell adherence since despite the high viability of the matrix, the cells were not attaching to the BC surfaces.

Silk. Silk is an attractive protein-based biomaterial made of fibroin that has gained interest in tissue engineering (Fig. 6). It is typically produced by insect larvae in the form of cocoons at the stage of metamorphosis to become an adult. Generally, silk is recognised in tissue engineering for its biocompatibility, biodegradability and bioresorbable properties,^{82,83} in addition to its processability by spin coating,⁸⁴ electrospinning⁸⁵ and cross-linking.⁸⁶ Typical silk used for tissue engineering includes silkworms from the Bombycidae and Saturniidae family, with *Bombyx mori* as a common species with high-quality fibres.⁸⁷ Endeavours in utilising silk for research as a biomaterial in kidney tissue engineering have proven its potential to be used as a scaffold for kidney disease models.

Organoids are being increasingly used to replicate much of the complexity of an organ, and silk has proven to be a great substrate for these applications due to its high cytocompatibility as well as significant cell adhesion property.⁸⁸ Gupta *et al.* successfully developed kidney organoids induced from pluripotent stem cells with a silk scaffold through spin seeding, which supported differentiation into epithelial cells from kidney progenitor cells with nephron markers (Fig. 7).⁸⁹ Engraftment of the organoid epithelial cells under the renal capsule showed vascularisation and induced mesenchymal cell proliferation within the scaffold. Despite this model lacking the cellular organisation akin to renal tissue, further fabrication plans are possible, as demonstrated by Szymkowiak *et al.*, who developed an aligned silk sponge by directional freezing to imitate the kidney tubule structure. This scaffold was seeded with adult proximal tubule cells and cultured in a perfused reactor, which was proven to induce cell polarity.⁹⁰ Upregulation of key proximal tubule markers, especially SLC9A3, a sodium-hydrogen exchanger protein, was observed in the perfused condition but not in the static, indicating that the fabricated silk scaffold is necessary for maturation. Hence, this method opens the potential for a bioartificial renal assist device with a close-to-real kidney component.

For disease modelling that addresses the morphogenesis of kidney epithelial cells, silk-based scaffolds were developed to compare healthy and diseased kidneys, focusing on autosomal dominant polycystic kidney disease. Subramanian *et al.* used

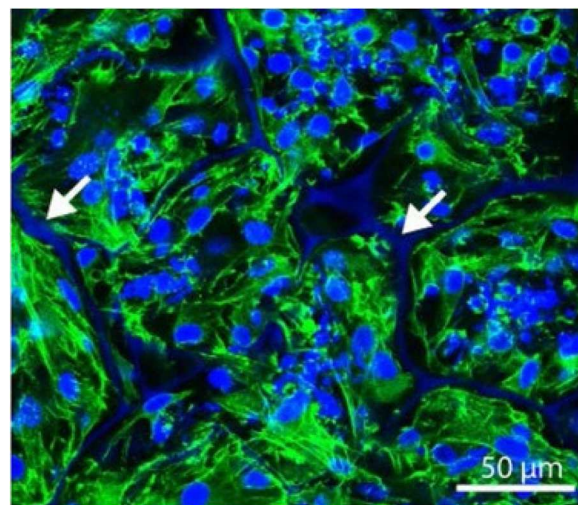


Fig. 7 Kidney progenitor cells seeded on a silk scaffold, stained with Phalloidin 488 (green) and DAPI (blue), showing cells were packed into the scaffold. Reproduced with permission from Gupta *et al.* 2019.⁸⁹

murine kidney epithelial and fibroblast cells, which were co-cultured in a collagen-Matrigel matrix to promote morphogenesis before being infused into a porous three-dimensional cylindrical silk scaffold. The cell-scaffold system was later introduced into a perfused bioreactor setup and showed better structural development than a static culture. This strategy produced a sustainable tissue model with stability for up to six weeks for both healthy and diseased cells, given the low degradation property of silk, and most importantly, allowed for tissue morphogenesis that much better mimicked what is seen *in vivo*.⁹¹ Similar work from the same research group used the 3D printing technique to generate a porous silk scaffold in which normal or polycystin-1 silenced murine inner medullary collecting duct cells were mixed with a collagen-Matrigel matrix. The use of these scaffolds showed that in the silenced *Pkd1* cells, there are autocrine signalling loops which lead to unusual matrix deposition and changes in the integrin- β 1 protein subunit, leading to a higher rate of cystogenesis in the tissue.⁹²

Silk has also been processed into fibres by electrospinning to serve as a tissue engineering scaffold considered biomimetic. Work performed by Mou *et al.* utilised podocytes



derived from induced pluripotent stem cells and demonstrated maturation of the cells on the laminin-functionalised silk sheet for the first time with the expression of podocyte-specific markers such as podocin and nephrin. The cells were also sustained for up to two weeks.⁹³

Hence, these results point to the utility of silk in kidney tissue engineering applications as a highly potential biomaterial.

Hydrogels in kidney tissue engineering

Bio-based hydrogels

Natural polymer-based hydrogels that have been considered suitable candidates, especially for kidney tissue engineering, include gelatin and collagen, known for manipulating the extracellular matrix protein composition.²⁸ These materials are inherently biocompatible and non-toxic without significantly triggering immune responses within human physiology, which makes remodelling convenient. Since natural hydrogels are bio-based, they are easily functionalised to improve biocompatibility even if they are not bioactive. Also, the water retention capacity generally helps nurture cellular sustainability within a 3D structure. In kidney tissue engineering, renal researchers recognise the importance of renal cell growth, and strategies were developed to emulate an ideal cellular matrix in promoting bioactivity and cell signalling to mimic native environment.

Extracellular matrix. The extracellular matrix, or ECM, is an essential component in biological systems to allow cellular dynamics and functionality apart from maintaining structural integrity. The kidney is no exception, by comprising mainly of collagen IV, laminin, nidogen-1 and heparin sulphate proteoglycan (of perlecan, agrin and collagen type XVII),⁹⁴ which maintain the specific functions of this organ. Given the kidney's complexity, different parts have different ECM compositions depending on their function and biological mechanism. The glomerular basement membrane (GBM), for instance, consists of collagen IV, laminin, nidogen, and negatively charged sulphated proteoglycan in contact with endothelial cells and podocytes, which is suited for haemofiltration.⁹⁵ The GBM contains members of these protein families, including laminin-521, collagen $\alpha 3\alpha 4\alpha 5(\text{IV})$, and agrin and these are proven crucial for the sustaining a healthy functioning glomerulus (Fig. 8).⁹⁶

Several ECM experiments have been carried out as a kidney regenerative medicine approach.⁹⁴ One of the techniques is recolonising decellularised kidneys with kidney cells. The decellularisation is usually done using surfactants, normally sodium dodecyl sulphate (SDS) and Triton X-100, to wash out all cellular components leaving out only the ECM. Several types of cells have been used to recolonise these structures, such as primary renal cells,^{97,98} induced pluripotent stem cells,^{99–102} embryonic stem cells,^{103–105} and tubular cells¹⁰⁶ showing positive outcomes in both supporting cell attachment and growth, as well as allowing urine production.

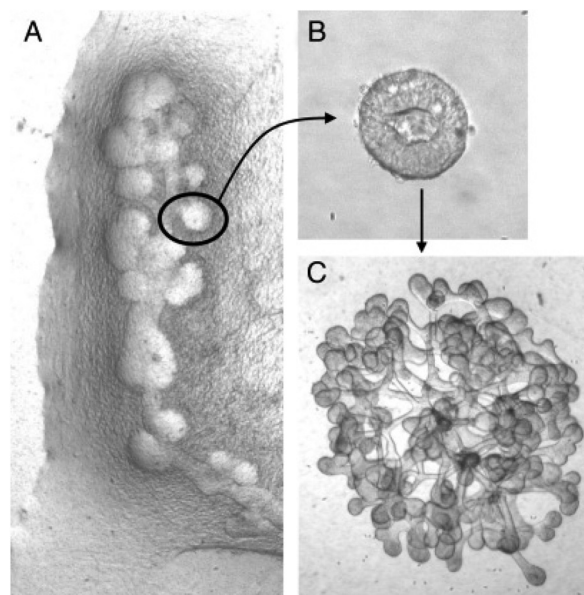


Fig. 8 Figures of (A) budding of Wolffian duct, (B) isolated single bud cultured in 3D ECM matrix and induced to branch, and (C) branched organoid. Reproduced from Rosines *et al.*⁹⁶ Copyright © 2007 by The National Academy of Sciences of the USA.

Kidney ECM also has been further processed and fabricated, demonstrating the processability and versatility of this biomaterial in tissue engineering applications. It has been lyophilised and cryomilled (Fig. 9), allowing composition tailoring to make up a scaffold as a hydrogel.^{107–111} Blending has been adopted as well, as reported by Lih *et al.*, who incorporated kidney-derived ECM within PLGA 3D scaffold with magnesium hydroxide to address the acidification and inflammation response.^{73,112} Furthermore, ECM has been successfully electrospun to mimic the filtration barrier using PCL as the base material. The ECM promoted the formation of a tight junction,¹¹³ and brush-border microvilli and cell polarisation were also observed.¹¹⁴ Kidney ECM has also been made into “tissue paper” that can be cut, rolled, folded and sutured, which has been proven to be very porous at $85.5 \pm 1.8\%$, and 2.4 ± 0.8 MPa of Young's modulus.¹¹⁵ Meanwhile, Matrigel, a type of ECM derived from Englebreth-Holm Swarm mice tumours consists mainly of laminin and collagen type IV, has also been used as a 3D matrix culture environment. Matrigel has the typical composition of glomerular and tubular basement membranes. In an attempt to design whole kidney tissue engineering for implantation applications, Matrigel was shown to be one of the best materials to support the branching of an isolated cellular bud derived from a rat mesonephric duct (Wolffian duct).⁹⁶

Another unique approach using ECM in kidney tissue engineering is the development of bioinks. One group developed a photo-cross-linkable ECM by introducing methacrylic components along the ECM fibres. Using a heterogeneous human primary kidney cell mixture, the bioink was formulated with thermosensitive gelatin, hyaluronic acid to promote





Fig. 9 Step-by-step process obtaining ECM from kidney, (1) kidney collected, (2) cut into small pieces, (3) decellularised in SDS and Triton X-100, (4) lyophilised and ground into powder, and (5) rehydrated and solubilised. Adapted with permission from Magno *et al.*, 2017.¹⁰⁸

uniform dispersion, and glycerol to assist the ink extrusion.¹¹⁶ Another bioink approach blended the ECM with sodium alginate to assist cell encapsulation which was later crosslinked by calcium chloride; in this case, using human proximal tubular cells, stem cells and human umbilical vein endothelial cells (HUVEC).¹¹⁷

Generally, ECM, especially kidney-derived, has been shown to support kidney cell growth and proliferation with good adhesion properties. For attempts to create an ideal kidney replacement method through a tissue engineering approach, ECM is deemed as an essential component, and several approaches rely on *in situ* excretion by the renal cells themselves to better mimic the ECM observed *in vivo*.

Collagen. Another biomaterial that is gaining interest in kidney tissue engineering is collagen which forms a triple-helix protein called tropocollagen, a building block of collagen fibril that eventually becomes the collagen fibre (Fig. 10). Collagen is a major component of the kidney ECM, especially those found within basement membranes with collagen I, collagen IV (mainly in the form of $\alpha3\alpha4\alpha5(\text{IV})$ network), collagen VI, and collagen XVIII as part of proteoglycan component.⁹⁴ Hence, it is relevant to incorporate collagen in developing kidney tissue material formulation to obtain the best scaffold to encourage kidney cell growth and maturation. The bioactive properties of neat collagen, in particular type I collagen has been shown to restore renal function after an ischemic injury. An injected collagen hydrogel promoted glomerular and tubular regeneration, providing a simple yet effective approach to address a renal injury problem.¹¹⁸

In terms of cell culture, collagen type I extracted from the scales of Egyptian Nile Tilapia, *Oreochromis niloticas*, has

demonstrated cytocompatibility with a baby hamster kidney (BHK-21) cell line, with no toxicity effects observed, even across different collagen concentrations (Fig. 11).¹¹⁹ In another study, collagen type I extracted from the swim bladder of grass carp has been investigated for renal tissue engineering application; initially using protein functionalised with methacrylic anhydride to allow crosslinking for structural stability and blended with chondroitin sulphate as an anti-fibrotic component. This biomimetic hydrogel has been shown to heal nephrectomised rat kidneys by promoting kidney cell growth, regenerating damaged tubular structures and restoring cellular metabolic function.¹²⁰

Rehydrated collagen vitrigel (collagen type I), has been prepared by vitrification, a method of drying to form a glass-like material, and has been shown to support the co-culture growth of glomerular epithelial cells with renal mesangial cells, promoting the polarisation of cells observed in *in vivo* glomeruli.¹²² Meanwhile, the collagen-Matrigel matrix has been demonstrated as a scaffold that fostered the self-assembly of tubular and glomerular cells, with tube- and tuft-like architectures, respectively.¹²³

In a scaffold engineering approach, collagen was used to create an *in vitro* biomimetic branched vasculature containing kidney scaffold. Laboratory-grade collagen type I was used to coat the PCL cast perfused in a rat kidney as mould. The PCL has been washed away with acetone, leaving a hollow collagen scaffold colonised with MS-1 endothelial cells to enhance vascularisation. The 3D construct can be perfused, endothelialised and vascularised (Fig. 12).¹²⁴

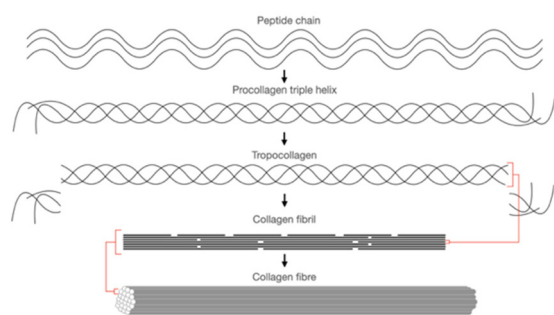


Fig. 10 The building block of collagen from peptide chain to collagen fibre. Adapted from Kruger *et al.*, 2013.¹²¹

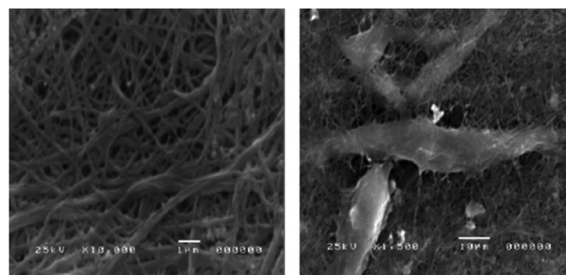


Fig. 11 Electron micrograph of collagen from Egyptian Nile Tilapia, neat collagen (left) and collagen cultured with BHK-21 (right) showing good attachment. Reused with permission from El-Rashidy *et al.*, 2015.¹¹⁹



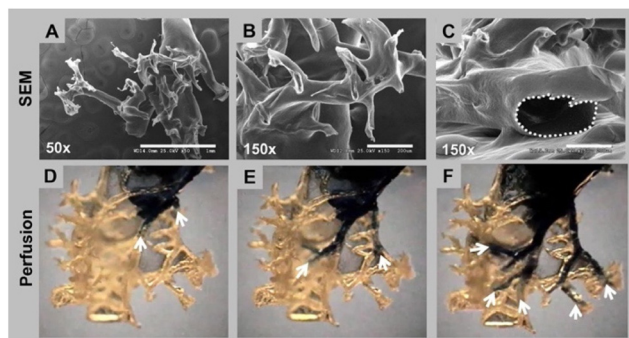


Fig. 12 Branching and hollow structure of collagen vascular scaffold. The top row (A–C) shows the branching through electron microscopy, and the bottom row (D–F) shows the perfusion of trypan blue dye for the structure continuity and interconnection. Reproduced with permission from Huling *et al.*, 2016.¹²⁴

Given its bioactive property and as a naturally occurring component within almost all cellular environments, collagen is a great candidate to bring renal research forward. Whether developing a practical cell therapy approach or an ideal scaffold in tissue engineering, it provides a highly suitable tool for renal regenerative medicine.

Gelatin. Gelatin is a type of polypeptide derived from the hydrolysis of collagen fibrils. It is typically extracted from beef and pork; Isinglass is a form of gelatin from fish swim bladders with lower mechanical strength.¹²⁵ Gelatin is well known for being one of the ingredients for making gel-textured desserts. It is thermosensitive with a melting point of around 30 °C, making it processable. Gelatin has been acknowledged to be biocompatible in kidney tissue engineering and has been used to develop tools to suppress certain nephropathic conditions.

For instance, a human renal progenitor cell was encapsulated in a gelatin-based hydrogel equipped with hyaluronic acid to address immunoglobulin A (IgA) nephropathy in a renal cell therapy study. The hydrogel was injected under the renal cortex of high serum IgA mice, also known as ddY or HIGA mice, a mouse strain that develops spontaneous IgA nephropathy, to enable treatment by a cell therapy approach. Injected mice were seen to have a normal appearance of the kidney with a decreased expression of pro-inflammatory and pro-fibrotic components, increased expression of anti-inflammatory genes, and much reduced IgA deposition.¹²⁶ In another study, murine pluripotent embryonic stem cells were packed into a gelatin microcryogel as a cell carrier to regenerate kidneys damaged using the 5/6 nephrectomy model of chronic kidney diseases. The cell-hydrogel was wrapped with the incised kidney by the omental flap. In the treated animals, plasma creatinine levels decreased by 30–40% and plasma urea nitrogen by 20–26% after 12 weeks, and there was a marked reduction in glomerulosclerosis and tubular injury.¹²⁷ Similar work from the same group utilising mesenchymal stem cells further demonstrated that this method ameliorated fibrosis and promoted antitubular inflammation suppressing CKD progression.¹²⁸

In addressing the sensitivity of renal cells towards the mechanical properties of the material, work studying podocyte behaviour was conducted using gelatin as a culture substrate. The gelatin was enzymatically crosslinked by gelatin transglutaminase to link glutamine and lysine groups, producing a biomimetic matrix akin to a healthy glomerulus, with Young's modulus between 2–5 kPa. Interestingly, the podocytes expressed genes and proteins that reflect their specificity, differentiation, and functionality, in contrast to those cultured in a soft and stiff hydrogel.¹²⁹ Gelatin was also fabricated into microspheres, crosslinked by a carbodiimide-based crosslinker solution to tune the mechanical property, in this case, to control its biodegradability. Instead of encapsulation, rat kidney cells were cultured and injected into rat kidney parenchyma. Beads with a lower degree of crosslinking were more susceptible to degradation, producing good cell performance without inducing fibrosis.³⁵

Besides capsules and microspheres, the processibility of gelatin has enabled it to be electrospun to construct nanofibrous scaffolds. The initial hydrogel solution was formulated with an array of gelatin and acetic acid concentration ratios, in which the presence of acetic acid was to assist dissolution that leads to a tuneable electrospinning solution viscosity. A cytocompatibility test with human endothelial kidney cells, HEK 293 cells, demonstrated that electrospun gelatine scaffold with 25% acetic acid has the highest cell viability up to 90%, which was suggested to be due to the smallest amount of acid traces available, post-processing.¹³⁰

In a sophisticated fabrication of a perfusable scaffold on-a-chip, a 7.5% w/v gelatin-fibrinogen matrix was housed in a microchannel formed by printing Pluronic F127 as fugitive ink. After flushing the fugitive ink, the channel was conditioned with media before being seeded by perfusion with renal proximal tubular cells. They maintained the culture for over two months, with clear epithelial morphology and functionality comparable to those in 2D structure (Fig. 13).¹³¹

In terms of developing bioink, gelatin is one of the most suitable cell carriers with an ideal melting temperature that could support kidney cells.¹¹⁶ A bioprinting approach utilising human endothelial kidney cells, HEK293FT, has been carried out and optimised to maintain the viability of the cells by more than 90% within the hydrogel matrix. The approach has

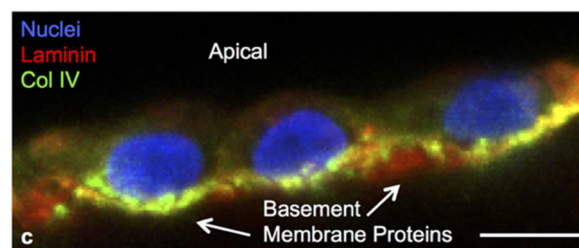


Fig. 13 Podocytes expressing key basement membrane components namely laminin and collagen IV, at six weeks on a perfusable channel wall made with a gelatin-fibrinogen. The scale bar is 10 μ m. Reused from Homan *et al.*, 2016.¹³¹



formulated 10% of gelatin as the main component within the bioink, along with 1% alginate and 2% fibrinogen, supporting 3D cell growth into spheroids.¹³²

Alginate. Alginate is an attractive biomaterial that is gaining attention in tissue engineering applications. As a natural polysaccharide, it is mainly extracted from brown algae despite being produced by certain bacteria from the *Pseudomonas* and *Azotobacter* genera.¹³³ It is made up of β -D-mannuronic acid and the C5 epimer α -L-guluronic acid, linked by 1,4-glycosidic bonds (Fig. 14).⁶⁵ Renal tissue engineering considers alginate a potential material, given its non-toxic and tailorable stiffness for soft tissue application as well as having a matrix conformation akin to ECM.¹³⁴ Research involving alginate in the renal field uses it as a cell-laden matrix to mimic the extracellular environment to allow maturation.

A cell therapy experiment was carried out *in vivo* and *in vitro*, using a formulation of decellularised porcine kidney extracellular matrix with alginate hydrogel crosslinked by calcium chloride solution. *In vitro* cytocompatibility study utilised rat renal progenitor cells, showing that a composition of 2% of alginate was optimal for supporting cell proliferation over 7 days of culture (Fig. 15). *In vivo* injection of the progenitor cell encapsulated hydrogel stimulated early-stage healing by accumulating M1 and M2 macrophages, along with hydrogel degradation over 21 days.¹³⁶ A similar strategy encapsulated mesenchymal stem cells into alginate microspheres coated

with poly-L-lysine hydrogel construct as a graft,¹³⁷ which was intended for implantation as a cell-laden scaffold into an impaired kidney. The microspheres were shown to be stationary over 25 days, with no inflammation and fibrosis, and without significant change in renal function in terms of concentration of creatinine and urea in plasma, compared to sham rats as control.¹³⁸

Alginate is also seen as a potential material to enable the engraftment of cells to a damaged kidney through advanced processing. A thiolene functionalisation technique was adapted to design an alginate-based hydrogel that is photocrosslinkable. The soft hydrogel is an *in vitro* matrix to culture kidney organoids pre-implantation. It was prepared using norbornene functionalised alginate, mixed with PEG and lithium phenyl (2,4,6-trimethyl benzoyl) phosphinate (LAP) photoinitiator, and was shown to suppress the abnormal collagen type I α 1 and α -smooth muscle actin (α SMA) production observed during fibrotic instances, nurturing proper organoid maturation *in vitro*.¹³⁹ Another approach designed a biomimetic matrix for organoid culture utilising oxidised alginate (alginate with the C₂ and C₃ bond cleaved within the hexose ring, forming two aldehyde group).¹⁴⁰ The structurally dynamic alginate produced benefited in terms of promoting most kidney cellular segments development, tubule polarisation and cilia formation. The stress-relaxing hydrogel as well eliminated early marker of renal fibrosis.¹⁴¹

Alginate was also used as a bioink in an extended application for encapsulating renal cells for 3D tissue engineering. An *in vitro* kidney model was developed *via* bioprinting, utilising primary murine tubular epithelial cells in combination with HUVEC cells within a concentric tubular design, spatially separating the two cells in a tubular structure using a core-shell printhead. The viability of cells over seven days of culture was not promising for both commercially obtained AG-10TM Matrix alginate and alginate from brown algae.¹⁴² It was assumed that further effort is required to make a more bio-

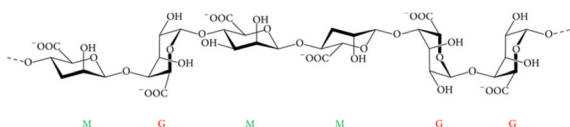


Fig. 14 Alginate general molecular structure consists of β -D-mannuronic acid (M) and the C5 epimer α -L-guluronic acid (G), all linked by glycosidic bonds. Adapted from Szekalska *et al.*, 2016.¹³⁵

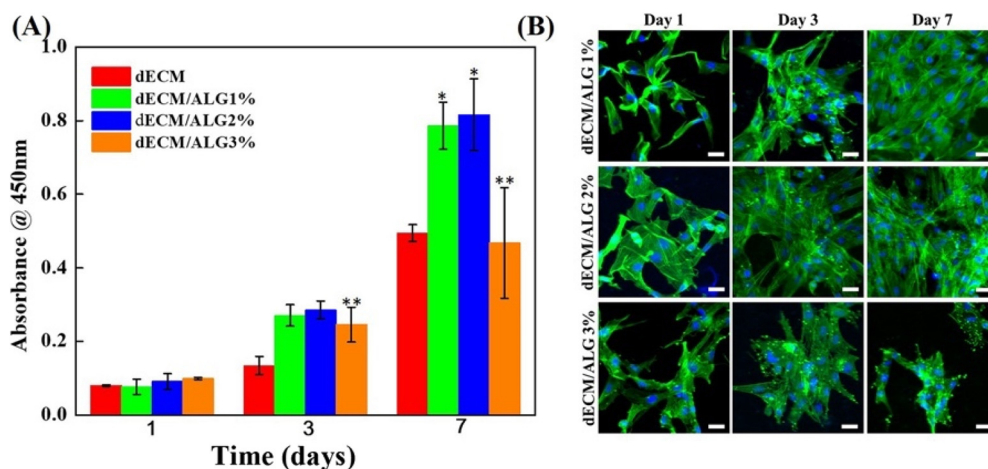


Fig. 15 Cell viability test of renal progenitor cells across different ECM/alginate blend compositions, showing that 2% of alginate has the best performance over seven days of culture *in vitro* where (a) CKK-8 assay and (b) confocal microscopy. Reproduced with permission from Chu *et al.*, 2022.¹³⁶



active alginate bioink formulation. For bioengineering applications, alginate has mechanical versatility and is easily modified to improve its biocompatibility. Improving biocompatibility, especially for *in vitro* matrix design for renal culture, is crucial for renal tissue modelling or implantable organoid culture.

Synthetic hydrogels

Synthetic hydrogels are defined as a type of material that is chemically synthesised, which enables it to swell and retain water, as well as form a matrix. Typically, the building block of synthetic hydrogels is synthetic polymers. Polyethylene glycol, polyethylene oxide, polyvinyl alcohol, poly(2-hydroxyethyl methacrylate) polyacrylic acid, and poly(propylene fumarate-co-ethylene glycol) are some examples of synthetic, biocompatible, and gel-forming polymers suitable for tissue engineering applications.¹⁴³ To date, there are limited reports on the use of synthetic hydrogels in kidney tissue engineering. Since one of the crucial aspects to enable cell growth is for any material to be bioactive, most hydrogels selected so far for this purpose have been naturally-derived.

In the work carried out by Astashkina *et al.*, a 3D kidney model was developed from a proximal tubule extracted from a murine kidney using a synthetic hydrogel-based matrix. Formulation of 7.5% polyethylene glycol dimethacrylate (PEGDA) and 1.5% thiol-modified carboxymethylated hyaluronic acid (CMHA-S) to introduce a bioactive environment, made up of the hydrogel to enable a 3D culture of the cells. The organoid formed is claimed to maintain cellular activity observed *in vivo* and was stable for up to six weeks, which is relevant for a drug screening model focusing on nephrotoxic effects.^{144,145} Clerkin *et al.* developed an organic-based synthetic hydrogel, gelatin methacryloyl, widely known as GelMA, to grow iPSC-derived kidney organoids. It has been shown to nurture the development of both distal and proximal tubular structures as well as the glomerulus, with gene expression analysis showing upregulation of nephron-related genes, including PAX8, NPHS2, NPHS1, SLC3A1 and AQP1.¹⁴⁶

Synthetic hydrogels are the future of tissue engineering, with the possibilities of tailoring an ideal cell culture matrix. However, their bioactive properties still need to be properly addressed. Generally, cells in microenvironment need biochemical cues and signals that promote proliferation and differentiation in order to be fully functional. Kidney cells for instance respond well with presence of bioactive materials such as collagen^{118–120} and laminin,⁵⁹ both of which are integral in healthy kidney tissues. Other types of biomolecules that can be considered include RGD-peptides to improve cells attachment onto the substrate,⁶² and growth factors such as vascular endothelial growth factor, or VEGF, especially for glomerular endothelial cells in order to promote vascularisation.¹⁴⁷ Kidney extracellular matrix is one of the biomaterials that proven to nurture kidney cells, given all of its composition allow kidney cells to stay viable to become fully functional.

Hence, synthetic hydrogels are yet to be explored for their potential in kidney tissue engineering. The strategy for the enhancement of their biocompatibility and bioactivity by the incorporation of certain compounds in order to enable cell-matrix interaction and ultimately promote a better design for kidney regenerative application (Table 3).

Conclusion and future prospective in kidney tissue engineering

Kidney tissue engineering is rapidly growing with the aim of producing the closest imitation to an organ that performs haemofiltration and complements biochemical processes to restore the innate physiological balance. Any tissue engineering attempt acknowledges the importance of creating a suitable base for regenerating functional tissue, whether it provides mechanical integrity to support appropriate cell proliferation and differentiation or creates a viable microenvironment; both are equally important.

Suitability of polymers and hydrogels

Polymers and hydrogels are common materials used for kidney tissue engineering, widely tailored to optimise using the combination of multiple materials to achieve the best composition and formulation. Polymers, for instance, need to be appropriate for soft tissue engineering applications, which is important for a kidney. A material that is too stiff may affect proper cell development, as observed in the culture of podocytes.¹²⁹ A bioactive substrate that supports growth and differentiation, is a major aspect of the material composition. In most cases, ECM derived from the kidney or Matrigel^{91,92,96} have been extensively utilised. Using other bioactive components such as hyaluronic acid^{116,126,144} and fibrin^{40,131,132} has also created a better renal cell growth environment. Hence, work carried out shows that renal tissue engineering is feasible in generating a cellularly functional kidney tissue that can perform the intended function within the human body. Silk has a special ability to support kidney cell growth without any further modification as described in this review.^{89–92}

Each material category offers specific benefits and addresses different aspects in kidney tissue engineering. Hence, to state that one type of material is superior to another would be inaccurate. They complement each other and hence, multi-material structures are a way forward to creating the best material formulation.

Challenges in developing bioartificial kidney

A step forward will be the use of these materials in a medical setting, either developing a practical and effective regenerative therapeutic approach to repair partially degenerated kidneys or a functional bioartificial kidney to replace damaged kidneys. For bioartificial kidneys, the renal cell biology needs complement the physical aspect of a natural kidney with fluid flow and dynamics, to adequately address the functionality and stability of the cells. The design needs to address the intricacy



**Table 3** A summary table of materials that have been used in kidney tissue engineering

Material	Modification	Cell line	Results	Ref.
Synthetic polymers				
Polysulphone (PS)	Coated with extracellular matrices (ECM) such as collagen type I, laminin and pronectin-F	Lewis lung cancer-porcine kidney 1 or LLC-PK1 and Madin-Darby canine kidney (MDCK) cells	Resulted in a decreased amount of urea, uric acid, and creatinine by up to 50% and β_2 -microglobulin under 20 mg L^{-1} in a human patient	49 and 50
	Creating hollow tubes by extruding polymer-in-solvent solution through double injection nozzles with different diameters to create different tube curvatures	Human kidney 2 (HK-2) proximal tubule cells and Madin-Darby canine kidney (MDCK) epithelial cells	Significant ultrafiltration properties were achieved, between $190\text{--}256 \text{ L m}^{-2} \text{ h}^{-1}$, with a high bovine serum albumin rejection percentage, <i>i.e.</i> above 70%; higher curvature or lesser diameter of the hollow tubes promoted cell functionality	46
	Coated either with a single coat of <i>D</i> - α -tocopheryl polyethylene glycol 1000 succinate; or a double coating of <i>L</i> -3,4-dihydroxyphenylalanine (<i>L</i> -DOPA) and human collagen type IV	Human embryonic kidney cells 293 (HEK 293)	Effective removal of uremic toxins, such as urea, creatinine, and phosphorus, to a significantly greater extent than the commercial PS membrane	49
	PS-50, was coated with <i>L</i> -DOPA and human collagen type IV	Conditionally immortalised proximal tubule epithelial cell (ciPTEC) line	Promoted water permeability and cell monolayer formation, as well as retained proteins such as bovine serum albumin and immunoglobulin G	51
	Blended with polyvinyl pyrrolidinone K90 (PVP) and made porous by a phase separating micro-moulding technique	ciPTEC	Different topographical arrangements of PS were found to have the ability to influence cell orientation and morphology, defined by the size and gaps of micro-features that were distributed on the membrane	53
Poly- ϵ -caprolactone (PCL)	Electrospinning: random, aligned, and cryogenic and plasma treated	Human kidney primary epithelial (RC-124) cells	Growth was improved with larger diameters of the fibres, presumably it makes the scaffold to have a higher degree of porosity	58
	Co-synthesised with polyethylene glycol (PEG) to produce PCL-PEG-PCL as coating on PCL	Embryonic kidney cells	Promoted three times higher cell growth than non-coated PCL, with no cytotoxicity response	60 and 61
Polylactic acid (PLA)	Electrospinning with different fibre diameters	Rodent primary kidney cells; proximal tubular cells, collecting duct cells, podocytes, and glomerular endothelial cells	Larger diameter fibres, around $3.30 \pm 0.17 \mu\text{m}$, compared to smaller ones around $0.88 \pm 0.16 \mu\text{m}$ supported cell proliferation proven by the highest DNA content after three and seven days of culture	67
	Coaxial electrospinning with polyvinyl alcohol (PVA)	HEK 293	Neat PLA still performed as the best scaffold supporting up to 75% cell viability, compared to coaxial electrospun PLA/PVA fibres supporting only 35–40% cell viability	68
Polyglycolic acid (PGA)	Fabricated with fibrin gel	Conditionally immortalized human glomerular cells; podocytes and glomerular endothelial cells	Co-cultures exhibited an interesting self-assembly behaviour besides displaying good proliferation and cell adhesion patterns	40
Poly(lactic-co-glycolic) acid (PLGA)	Porous PLGA scaffold containing magnesium hydroxide as an anti-inflammatory agent and porcine renal extracellular matrix	Nephrectomised mouse kidney	Expression of collagen IV was observed, a key glomerular basement membrane (GBM)	
			Regeneration of the glomerulus, was observed with restoration of kidney function in the mouse model	73
Silicon	Nanopore membrane with different pore sizes ranging from 10 nm to 500 nm as a haemofilter	Human cortical tubular epithelial cells (HCTC)	Allowed cell differentiation with cilia and tight junction formations	76
Natural polymers and biopolymers				
Cellulose	Cellulose membranes from regenerated cellulose sourced from cotton blended with polysulphone	—	Exhibited less biocompatibility and more immune response than polysulphone	73 and 74
	Fabrication of cellulose into cellulose triacetate and cellulose diacetate	—	The membrane replacement did not contribute to any adverse reactions for patients undergoing haemodialysis	
			Reduced platelet activation	75 and 76
	Nanofibrillar cellulose (NFC) hydrogel	Primary embryonic metanephric mesenchymal cells of murine source	Demonstrated a chemically induced nephrogenesis of the organoid	77
	Decellularised spinach and chive leaves coated with <i>L</i> -3,4-dihydroxyphenylalanine (<i>L</i> -DOPA)	ciPTEC	Not favourable for fostering transepithelial solute exchange due to the micro-anatomical structure of the scaffold providing a lack of permeability	80
	Produced by fermentation of <i>Gluconacetobacter saccharivorans</i> LMG 158, in parallel fed with <i>D</i> -glucose and cultured with the presence of carboxymethyl cellulose sodium salt and hydroxyapatite for <i>in situ</i> incorporation	HEK 293	High cellular viability up to 97.2%	81
Silk	Solvent-casted without any modification	Kidney organoids from induced pluripotent stem cells (iPSC)	Supported differentiation into epithelial cells from kidney progenitor cells with nephron markers	89
			Showed vascularisation and induced mesenchymal cell proliferation within the scaffold under the renal capsule	
	Aligned silk sponge by directional freezing; introduced in a perfusion bioreactor	Adult proximal tubule cells	Induce cell polarity	90
			Upregulation of key proximal tubule markers, especially SLC9A3, a sodium-hydrogen exchanger protein, was observed in the perfused condition	
	Porous three-dimensional cylindrical silk scaffold; introduced in a perfusion bioreactor	Murine kidney epithelial and fibroblast cells in collagen-Matrigel matrix	Sustainable tissue model was generated with stability for up to six weeks for both healthy and diseased cells due to the low degradation property of silk	91
	3D printing technique generated a porous silk scaffold	Normal and polycystin-1 silenced murine inner medullary collecting duct cells encapsulated in collagen-Matrigel matrix	Allowed for tissue morphogenesis that much better mimicked what is seen <i>in vivo</i>	92
			There are autocrine signalling loops in the silenced <i>Pkd1</i> cells	
			Unusual matrix deposition and changes in the integrin- $\beta 1$ protein subunit	
	Electrospinning; laminin-functionalised silk sheet	Podocytes derived from iPSC	Higher rate of cystogenesis was observed in the tissue	93
			Demonstrated maturation of the cells	
			Expression of podocyte-specific markers such as podocin and nephrin	
			Sustained for up to two weeks	



Table 3 (Contd.)

Material	Modification	Cell line	Results	Ref.	
Bio-based hydrogel Extracellular matrix (ECM)	Recolonising decellularised kidneys	Primary renal cells, iPSC, embryonic stem cells, and tubular cells	Supported cell attachment and growth, as well as allowed urine production	97–106	
	Incorporated kidney-derived ECM within a PLGA 3D scaffold with magnesium hydroxide	Human renal cortical epithelial cells (HRCePC)	Regeneration of renal glomerular tissue with a low inflammatory response	73 and 112	
	Decellularised kidney ECM (dKECM) electrospinning with PCL	HK-2	Promoted the formation of a tight junction, brush-border microvilli and cell polarisation Cellular metabolic activity, proliferation and protein content increased with an increase in dKECM concentrations (30, 50 and 70%) Expression of zona occludens-1 was revealed on the dKECM-containing membranes but not on pure PCL membranes	113 and 114	
	ECM “tissue paper” by suspension casting from ECM ink	Human mesenchymal stem cells	Supported cell adhesion, viability, and proliferation over four weeks	115	
	Matrigel	Rat mesonephric duct (Wolffian duct) cells	Supported the branching of an isolated cellular bud	96	
	Photo-cross-linkable porcine kidney ECM bioink by introducing methacrylic components along the ECM fibres	Heterogeneous human primary kidney cell mixture	The cells-maintained kidney-specific phenotype and genotype, as well as forming tubular and glomerulus-like structure	116	
	Formulated with gelatin, hyaluronic acid and glycerol				
	ECM bioink produced with sodium alginate crosslinked by calcium chloride, and printed using by coaxial 3D cell-printing technique	Human renal proximal tubular cells (RPTEC), stem cells and human umbilical vein endothelial cells (HUVEC)	Long term graft survival was observed with expression of functional marker such as AQP1 and VE-cadherin	117	
	Collagen	Collagen type I extracted from the scales of Egyptian Nile Tilapia	Baby hamster kidney (BHK-21) cell line	No toxicity effects observed, even across different collagen concentrations	119
		Collagen type I extracted from the swim bladder of grass carp	Scaffold introduced within nephrectomised rat kidneys	Promoted healing and kidney cell growth, led to the regeneration of damaged tubular structures and restoration of cellular metabolic function	120
Protein functionalised with methacrylic anhydride and blended with chondroitin sulphate					
Rehydrated collagen vitrigel, a vitrified collagen type I		Co-culture growth of glomerular epithelial cells with renal mesangial cells	Promoted the polarisation of cells observed in <i>in vivo</i> glomeruli	122	
Collagen-Matrigel matrix		Mixed neonatal rat renal cells	Fostered the self-assembly of cells, with tube-like structure containing CK18-positive cells and tuft-like structure Flk-1-positive cells.	123	
Collagen type I coated on a PCL cast, later the PCL was washed away with acetone to form a hollow collagen scaffold		MS-1 endothelial cells	Good cell attachment and formation of endothelium layer	124	
Gelatin	Gelatin-based hydrogel with hyaluronic acid	Human renal progenitor cell; injected under the renal cortex of mice with high serum IgA (dDY or HIGA mice)	Decreased expression of pro-inflammatory and pro-fibrotic components was observed, increased expression of anti-inflammatory genes was observed and much reduced immunoglobulin A	126	
	Gelatin microcryogel	Murine pluripotent embryonic stem cells	The plasma creatinine levels decreased by 30–40% The plasma urea nitrogen decreased by 20–26% after 12 weeks There was a marked reduction in glomerulosclerosis and tubular injury	127	
	Gelatin microcryogel	Mesenchymal stem cells	Decreased fibrosis, promoted antitubular inflammation and suppressing CKD progression	128	
	Enzymatically crosslinked gelatin by gelatin transglutaminase to link glutamine and lysine groups	Podocytes	Expressed genes and proteins that reflect their specificity, differentiation, and functionality	129	
	Microspheres crosslinked by a carbodiimide-based crosslinker	Rat kidney cells were cultured and injected into rat kidney parenchyma	Beads with a lower degree of crosslinking were more susceptible to degradation, producing good cell performance without inducing fibrosis	35	
	Electrospinning formulated with a range of gelatin and acetic acid concentration ratios	HEK 293	The electrospun fibres spun using 25% acetic acid exhibited the highest cell viability of up to 90%	130	
	Gelatin-fibrinogen matrix housed in a microchannel formed by printing Pluronic F127 as fugitive ink	Renal proximal tubular cell	Maintained the culture for over two months Clear epithelial morphology and functionality comparable to those in 2D structure	131	
	Gelatin as the main bioink component, with alginate and fibrinogen	HEK293FT	Maintained the viability of the cells by more than 90% within the hydrogel matrix	132	
	Alginate hydrogel with decellularised porcine kidney ECM crosslinked with calcium chloride	Rat renal progenitor cells	<i>In vivo</i> injection of the progenitor cells encapsulated within the hydrogel stimulated early-stage healing by accumulating M1 and M2 macrophages, along with hydrogel degradation over 21 days	136	
	Alginate microspheres coated with poly-L-lysine hydrogel	Mesenchymal stem cells injected into the damaged kidney	No inflammation and fibrosis No significant change in renal function in terms of concentration of creatinine and urea in plasma	137 and 138	
Alginate	Thiolene functionalisation by norbornene functionalised alginate, mixed with PEG	iPSC	Suppressed the abnormal collagen type I $\alpha 1$ and α -smooth muscle actin (α SMA) production observed during fibrosis	139	
	Oxidised alginate	iPSC	Promoting most kidney cellular segment development, tubule polarisation and cilia formation Eliminated early marker of renal fibrosis	141	
	AG-10 TM Matrix alginate and alginate from brown algae; printing of concentric tubular designs using a core-shell printhead	Primary murine tubular endothelial cells ((pmTECs), with HUVEC cells	High cell viability and metabolic activity in an appropriate arrangement led to the production of a proximal tubule wrapped by endothelial cells	142	
	Synthetic hydrogels Polyethylene glycol	Polyethylene glycol dimethacrylate (PEGDA) and 1.5% thiol-modified carboxymethylated hyaluronic acid (CMHA-S)	Immortalized porcine LLC-PK1 renal proximal tubule epithelial cells HEK 293 and RPTEC	Stable for up to six weeks, relevant for a drug screening model focusing on nephrotoxic effects	144 and 145
		Gelatin methacryloyl (GelMA)	iPSC-derived kidney organoids	Supported the development of both distal and proximal tubular structures as well as the glomerulus	146
				Upregulation of nephron-related genes, including PAX8, NPHS2, NPHS1, SLC3A1 and AQP1 was observed	

of the natural kidney architecture, to allow proper functionality. Further, the challenge continues with the need to sustain the cells by integration within the patient's physiological system. This is also accompanied by immunological issues. Also, the bioartificial kidney unit should last for a significant amount of time to avoid frequent interventions which would still affect the patient's quality of life. Finally, regulatory issues for the unit's viability, reliability, and safety need to be addressed to allow patients to have a clinically approved approach. This endeavour is thus challenging but not unrealistic, given that some prototypes have already been used in animal trials,^{17,36,38} suggesting that they only need to be further refined for a human clinical trial.

Author contributions

S. M. D. S. M.: conceptualisation, resources, visualisation, writing – original draft. G. W.: conceptualisation, writing – reviewing & editing, supervision. I. R.: conceptualisation, project administration, writing – reviewing & editing, supervision.

Conflicts of interest

There are no conflicts to declare.

Acknowledgements

S. M. D. S. M. acknowledges funding by a scholarship programme, 'Program Pelajar Cemerlang' (Excellent Student Programme) by The Public Service Department, The Government of Malaysia. IR acknowledges funding by the EPSRC funded project (Grant no. EP/V012126/1) "SEE MORE MAKE MORE: Secondary Electron Energy Measurement Optimization for Reliable Manufacturing of Key Materials: Opportunities, Realisation & Exploitation (SM3)". Authors also acknowledge Dr Santosh S. V. Tetali for her kind insights and inputs on kidney diseases from medical perspective for this review write-up.

References

- N. K. Foundation, Global Facts About Kidney Disease, 2015. <https://www.kidney.org/kidneydisease/global-facts-about-kidney-disease>, (accessed 3/9/2020, 2021).
- V. A. Luyckx, M. Tonelli and J. W. Stanifer, *Bull. W. H. O.*, 2018, **96**, 414–422D.
- K. Makris and L. Spanou, *Clin. Biochem. Rev.*, 2016, **37**, 85–98.
- A. L. Magno, L. Y. Herat, R. Carnagarin, M. P. Schlaich and V. B. Matthews, *Biomedicines*, 2019, **7**, 19.
- S. Peerapornratana, C. L. Manrique-Caballero, H. Gómez and J. A. Kellum, *Kidney Int.*, 2019, **96**, 1083–1099.
- S. Spiliopoulos, M. Tsitskari, A. H. Holden and E. Brountzos, in *Image-Guided Interventions*, ed. M. A. Mauro, K. P. Murphy, K. R. Thomson, A. C. Venbrux and R. A. Morgan, Elsevier, Boston, 3rd edn, 2020, pp. 263–270. DOI: [10.1016/B978-0-323-61204-3.00031-2](https://doi.org/10.1016/B978-0-323-61204-3.00031-2).
- H. K. Eltzschig and T. Eckle, *Nat. Med.*, 2011, **17**, 1391–1401.
- J. Robinson, *What Are Autoimmune Disorders?*, 2020. <https://www.webmd.com/a-to-z-guides/autoimmune-diseases>, (accessed 6 Jun, 2021).
- A. S. Levey and J. Coresh, *Lancet*, 2012, **379**, 165–180.
- U. Department of Health and Human Services, High Blood Pressure & Kidney Disease, 2020, <https://www.niddk.nih.gov/health-information/kidney-disease/high-blood-pressure>, (accessed 6 June, 2021).
- R. Z. Alicic, M. T. Rooney and K. R. Tuttle, *Clin. J. Am. Soc. Nephrol.*, 2017, **12**, 2032.
- A. D. Salama and B. Caplin, *J. Rheumatol.*, 2020, **47**, 1303–1304.
- C. Bergmann, L. M. Guay-Woodford, P. C. Harris, S. Horie, D. J. M. Peters and V. E. Torres, *Nat. Rev. Dis. Primers*, 2018, **4**, 50.
- S. Klahr, *Intern. Med.*, 2000, **39**, 355–361.
- N. R. Aeddula and K. M. Baradhi, in *StatPearls*, Treasure Island (FL), 2021.
- H. D. Humes, D. Buffington, A. J. Westover, S. Roy and W. H. Fissell, *Pediatr. Nephrol.*, 2014, **29**, 343–351.
- H. D. Humes, W. H. Fissell, W. F. Weitzel, D. A. Buffington, A. J. Westover, S. M. MacKay and J. M. Gutierrez, *Am. J. Kidney Dis.*, 2002, **39**, 1078–1087.
- M. R. Hammerman, *Kidney Int.*, 2003, **63**, 1195–1204.
- Q. Al-Awqati and J. A. Oliver, *Kidney Int.*, 2002, **61**, 387–395.
- J. F. Maher, *Replacement of Renal Function by Dialysis: A Textbook of Dialysis*, Springer Netherlands, 1989.
- R. Khanna, *Am. J. Kidney Dis.*, 2017, **69**, 461–472.
- K. L. Johansen, G. M. Chertow, R. N. Foley, D. T. Gilbertson, C. A. Herzog, A. Ishani, A. K. Israni, E. Ku, M. Kurella Tamura, S. Li, S. Li, J. Liu, G. T. Obrador, A. M. O'Hare, Y. Peng, N. R. Powe, N. S. Roetker, W. L. St Peter, K. C. Abbott, K. E. Chan, I. H. Schulman, J. Snyder, C. Solid, E. D. Weinhandl, W. C. Winkelmayr and J. B. Wetmore, *Am. J. Kidney Dis.*, 2021, **77**, A7–a8.
- A. Hayat, D. Haria and M. O. Salifu, *Patient Prefer. Adherence*, 2008, **2**, 195–200.
- N. J. Brown and D. E. Vaughan, *Circulation*, 1998, **97**, 1411–1420.
- P.-T. T. Pham, P.-M. T. Pham, S. V. Pham, P.-A. T. Pham and P.-C. T. Pham, *Diabetes, metabolic syndrome and obesity: targets and therapy*, 2011, pp. 175–186.
- N. Anandakrishnan and E. U. Azeloglu, *Nat. Rev. Nephrol.*, 2020, **16**, 623–624.
- B. S. Freedman and B. Ratner, *ACS Cent. Sci.*, 2019, **5**, 380–382.
- A. F. Tarantal and C. A. Batchelder, *Woodhead Publ. Ser. Biomed.*, 2019, 477–492, DOI: [10.1016/B978-0-08-102561-1.00020-8](https://doi.org/10.1016/B978-0-08-102561-1.00020-8).



- 29 K. Jansen, C. C. L. Schuurmans, J. Jansen, R. Masereeuw and T. Vermonden, *Curr. Pharm. Des.*, 2017, **23**, 3845–3857.
- 30 D. R. Abrahamson, P. L. St John, D. J. Pillion and D. C. Tucker, *Lab. Invest.*, 1991, **64**, 629–639.
- 31 R. P. Foglia, J. DiPreta, M. B. Statter and P. K. Donahoe, *Ann. Surg.*, 1986, **204**, 402–410.
- 32 M. B. Statter, K. J. Fahrner, E. M. Barksdale, D. E. Parks, R. A. Flavell and P. K. Donahoe, *Transplantation*, 1989, **47**, 651–660.
- 33 B. Dekel, H. Marcus, B.-H. Herzel, W. O. Böcher, J. H. Passwell and Y. Reisner, *Transplantation*, 2000, **69**, 1470–1478.
- 34 A. S. Woolf, A. Hornbruch and L. G. Fine, *Am. J. Kidney Dis.*, 1991, **17**, 611–614.
- 35 M. A. Serban, T. Knight, R. G. Payne, J. Basu, E. A. Rivera, N. Robbins, D. McCoy, C. Halberstadt, D. Jain and T. A. Bertram, *Biotechnol. Appl. Biochem.*, 2014, **61**, 75–81.
- 36 K. A. Johnston, A. J. Westover, A. Rojas-Pena, D. A. Buffington, C. J. Pino, P. L. Smith and H. D. Humes, *J. Tissue Eng. Regener. Med.*, 2017, **11**, 3048–3055.
- 37 T. Souma, N. Suzuki and M. Yamamoto, *Front. Physiol.*, 2015, **6**, 167.
- 38 W. H. Fissell, J. Kimball, S. M. MacKay, A. Funke and H. D. Humes, *Ann. N. Y. Acad. Sci.*, 2001, **944**, 284–295.
- 39 M. R. Pollak, S. E. Quaggin, M. P. Hoenig and L. D. Dworkin, *Clin. J. Am. Soc. Nephrol.*, 2014, **9**, 1461–1469.
- 40 J. Tuffin, M. Burke, T. Richardson, T. Johnson, M. A. Saleem, S. Satchell, G. I. Welsh and A. Perriman, *Adv. Healthc. Mater.*, 2019, **8**, 1–11.
- 41 A. Little, A. M. Wemyss, D. M. Haddleton, B. Tan, Z. Sun, Y. Ji and C. Wan, *Polymer*, 2021, **13**, 2458.
- 42 A. T. C. R. Silva, B. C. O. Cardoso, M. E. S. R. e Silva, R. F. S. Freitas and R. G. Sousa, *J. Biomater. Nanobiotechnol.*, 2015, **6**, 8.
- 43 A. Igder, S. Pye, A. H. Mohammed Al-Antaki, A. Keshavarz, C. L. Raston and A. Nosrati, *RSC Adv.*, 2020, **10**, 14761–14767.
- 44 Y. Koga, H. Fujieda, H. Meguro, Y. Ueno, T. Aoki, K. Miwa and M. Kainoh, *Artif. Organs*, 2018, **42**, E246–e258.
- 45 W. H. Fissell, J. Kimball, S. M. MacKay, A. Funke and H. D. Humes, *Ann. N. Y. Acad. Sci.*, 2001, **944**, 284–295.
- 46 C. Shen, Q. Meng and G. Zhang, *Biotechnol. Bioeng.*, 2013, **110**, 2173–2183.
- 47 S. Yamanaka and T. Yokoo, *Stem Cells Int.*, 2015, **2015**, 724047.
- 48 I. G. Wenten, P. T. P. Aryanti, K. Khoiruddin, A. N. Hakim and N. F. Himma, *J. Membr. Sci. Res.*, 2016, **2**, 78–89.
- 49 A. Modi, S. K. Verma and J. Bellare, *Colloids Surf., B*, 2018, **167**, 457–467.
- 50 A. Saito, *Artif. Organs*, 2004, **28**, 58–63.
- 51 C. M. S. Schophuizen, I. E. De Napoli, J. Jansen, S. Teixeira, M. J. Wilmer, J. G. J. Hoenderop, L. P. W. Van den Heuvel, R. Masereeuw and D. Stamatialis, *Acta Biomater.*, 2015, **14**, 22–32.
- 52 L. Vogelaar, J. N. Barsema, C. J. M. van Rijn, W. Nijdam and M. Wessling, *Adv. Mater.*, 2003, **15**, 1385–1389.
- 53 F. Hulshof, C. Schophuizen, M. Mihajlovic, C. van Blitterswijk, R. Masereeuw, J. de Boer and D. Stamatialis, *J. Tissue Eng. Regener. Med.*, 2018, **12**, E817–E827.
- 54 W. Punyodom, W. Limwanich, P. Meepowpan and B. Thapsukhon, *Des. Monomers Polym.*, 2021, **24**, 89–97.
- 55 M. Labet and W. Thielemans, *Chem. Soc. Rev.*, 2009, **38**, 3484–3504.
- 56 G. U. Rani and S. Sharma, in *Encyclopedia of Materials: Plastics and Polymers*, ed. M. S. J. Hashmi, Elsevier, Oxford, 2022, pp. 474–486, DOI: [10.1016/B978-0-12-820352-1.00131-0](https://doi.org/10.1016/B978-0-12-820352-1.00131-0).
- 57 J. Basu, C. W. Genheimer, E. A. Rivera, R. Payne, K. Mihalko, K. Guthrie, A. T. Bruce, N. Robbins, D. McCoy, N. Sangha, R. Ilagan, T. Knight, T. Spencer, B. J. Wagner, M. J. Jayo, D. Jain, J. W. Ludlow and C. Halberstadt, *Cell Transplantation*, 2011, **20**, 1771–1790.
- 58 T. P. Burton, A. Corcoran and A. Callanan, *Biomed. Mater.*, 2017, **13**, 015006.
- 59 B. Baskapan and A. Callanan, *Tissue Eng. Regener. Med.*, 2022, **19**, 73–82.
- 60 W. J. Jia, Y. C. Gu, M. L. Gou, M. Dai, X. Y. Li, B. Kan, J. L. Yang, Q. F. Song, Y. Q. Wei and Z. Y. Qian, *Drug Delivery*, 2008, **15**, 409–416.
- 61 J. Sun, X. Liu, Z. Chen, L. Jiang, M. Yuan and M. Yuan, *Materials*, 2022, **15**, 1591.
- 62 M. Gabriel, G. P. V. N. Amerongen, W. M. V. Hinsbergh and A. V. V. N. Amerongen, *J. Biomater. Sci., Polym. Ed.*, 2006, **17**, 567–577.
- 63 Z. Guler, J. C. Silva and A. Sezai Sarac, *Int. J. Polym. Mater. Polym. Biomater.*, 2017, **66**, 139–148.
- 64 N. Msuya, J. H. Y. Katima, E. Masanja and A. K. Temu, *SciFed J. Polym. Sci.*, 2017, **1**(1), 1–15.
- 65 J. D. Hinchliffe, A. Parassini Madappura, S. M. D. Syed Mohamed and I. Roy, *Polymer*, 2021, **13**, 1–47.
- 66 J. Zan, G. Qian, F. Deng, J. Zhang, Z. Zeng, S. Peng and C. Shuai, *J. Mater. Res. Technol.*, 2022, **17**, 2369–2387.
- 67 T. P. Burton and A. Callanan, *Tissue Eng. Regener. Med.*, 2018, **15**, 301–310.
- 68 H. F. Alharbi, M. Luqman, K. A. Khalil, Y. A. Elnakady, O. H. Abd-Elkader, A. M. Rady, N. H. Alharthi and M. R. Karim, *Eur. Polym. J.*, 2018, **98**, 483–491.
- 69 M. Ayyoob, D. H. Lee, J. H. Kim, S. W. Nam and Y. J. Kim, *Fibers Polym.*, 2017, **18**, 407–415.
- 70 H. K. Makadia and S. J. Siegel, *Polymer*, 2011, **3**, 1377–1397.
- 71 X. Chen, Q. Liu, J. Yang, M. Kan, R. Jin, T. Pu, Y. Yang, T. Xing, X. Meng and H. Zang, *Phytother. Res.*, 2021, **35**, 6401–6416.
- 72 H. Yu, T. Lin, W. Chen, W. Cao, C. Zhang, T. Wang, M. Ding, S. Zhao, H. Wei, H. Guo and X. Zhao, *Biomaterials*, 2019, **219**, 119368.
- 73 E. Lih, W. Park, K. W. Park, S. Y. Chun, H. Kim, Y. K. Joung, T. G. Kwon, J. A. Hubbell and D. K. Han, *ACS Cent. Sci.*, 2019, **5**, 458–467.



- 74 S. C. Bayliss, P. J. Harris, L. D. Buckberry and C. Rousseau, *J. Mater. Sci. Lett.*, 1997, **16**, 737–740.
- 75 G. Kotzar, M. Freas, P. Abel, A. Fleischman, S. Roy, C. Zorman, J. M. Moran and J. Melzak, *Biomaterials*, 2002, **23**, 2737–2750.
- 76 W. H. Fissell, S. Manley, A. Westover, H. D. Humes, A. J. Fleischman and S. Roy, *ASAIO J.*, 2006, **52**, 221–227.
- 77 B. W. Chui, N. J. Wright, J. Ly, D. A. Maginnis, T. M. Haniff, C. Blaha, W. H. Fissell and S. Roy, *J. Microelectromech. Syst.*, 2020, **29**, 762–768.
- 78 C. Dahmen, A. Janotta, D. Dimova-Malinovska, S. Marx, B. Jeschke, B. Nies, H. Kessler and M. Stutzmann, *Thin Solid Films*, 2003, **427**, 201–207.
- 79 T. Abitbol, A. Rivkin, Y. Cao, Y. Nevo, E. Abraham, T. Ben-Shalom, S. Lapidot and O. Shoseyov, *Curr. Opin. Biotechnol.*, 2016, **39**, 76–88.
- 80 K. Jansen, M. Evangelopoulou, C. Pou Casellas, S. Abrishamcar, J. Jansen, T. Vermonden and R. Masereeuw, *AAPS J.*, 2020, **23**, 11.
- 81 C. J. Grande, F. G. Torres, C. M. Gomez and M. C. Bano, *Acta Biomater.*, 2009, **5**, 1605–1615.
- 82 M. McGill, N. Raol, K. S. Gipson, S. N. Bowe, J. Fulk-Logan, A. Nourmahnad, J. Y. Chung, M. J. Whalen, D. L. Kaplan and C. J. Hartnick, *Laryngoscope*, 2019, **129**, 2189–2194.
- 83 H. Tao, S. W. Hwang, B. Marelli, B. An, J. E. Moreau, M. Yang, M. A. Brenckle, S. Kim, D. L. Kaplan, J. A. Rogers and F. G. Omenetto, *Proc. Natl. Acad. Sci. U. S. A.*, 2014, **111**, 17385–17389.
- 84 A. Bucciarelli, V. Mulloni, D. Maniglio, R. K. Pal, V. K. Yadavalli, A. Motta and A. Quaranta, *Opt. Mater.*, 2018, **78**, 407–414.
- 85 S. Mohammadzadehmoghadam and Y. Dong, *Front. Mater.*, 2019, **6**, 91.
- 86 M. Farokhi, M. Aleemardani, A. Solouk, H. Mirzadeh, A. H. Teuschl and H. Redl, *Biomed. Mater.*, 2021, **16**, 022004.
- 87 D. A. Gregory, M. A. Tomeh and X. Zhao, *Int. J. Mol. Sci.*, 2021, **22**(3), 1499.
- 88 J.-L. Duval, T. Dinis, G. Vidal, P. Vigneron, D. L. Kaplan and C. Egles, *J. Tissue Eng. Regener. Med.*, 2017, **11**, 354–361.
- 89 A. K. Gupta, J. M. Coburn, J. Davis-Knowlton, E. Kimmerling, D. L. Kaplan and L. Oxburgh, *J. Tissue Eng. Regener. Med.*, 2019, **13**, 812–822.
- 90 S. Szymkowiak, N. Sandler and D. L. Kaplan, *ACS Appl. Mater. Interfaces*, 2021, **13**, 10768–10777.
- 91 B. Subramanian, D. Rudym, C. Cannizzaro, R. Perrone, J. Zhou and D. L. Kaplan, *Tissue Eng., Part A*, 2010, **16**, 2821–2831.
- 92 B. Subramanian, W.-C. Ko, V. Yadav, T. M. DesRochers, R. D. Perrone, J. Zhou and D. L. Kaplan, *Biomaterials*, 2012, **33**, 8383–8394.
- 93 X. Mou, J. Shah, R. Bhattacharya, T. D. Kalejaiye, B. Sun, P.-C. Hsu and S. Musah, *Bioengineering*, 2022, **9**, 188.
- 94 R. Sobreiro-Almeida, R. Quinteira and N. M. Neves, *Adv. Healthc. Mater.*, 2021, **10**, 2100160.
- 95 D. L. Paz, Y. Le Meur and Y. Renaudineau, in *Autoantibodies*, ed. Y. Shoenfeld, P. L. Meroni and M. E. Gershwin, Elsevier, San Diego, 3rd edn, 2014, pp. 553–560, DOI: [10.1016/B978-0-444-56378-1.00065-4](https://doi.org/10.1016/B978-0-444-56378-1.00065-4).
- 96 E. Rosines, R. V. Sampogna, K. Johkura, D. A. Vaughn, Y. Choi, H. Sakurai, M. M. Shah and S. K. Nigam, *Proc. Natl. Acad. Sci. U. S. A.*, 2007, **104**, 20938–20943.
- 97 S. H. Choi, S. Y. Chun, S. Y. Chae, J. R. Kim, S. H. Oh, S. K. Chung, J. H. Lee, P. H. Song, G.-S. Choi, T.-H. Kim and T. G. Kwon, *J. Biomed. Mater. Res., Part A*, 2015, **103**, 1391–1403.
- 98 M. Abolbashari, S. M. Agcaoili, M.-K. Lee, I. K. Ko, T. Aboushwareb, J. D. Jackson, J. J. Yoo and A. Atala, *Acta Biomater.*, 2016, **29**, 52–61.
- 99 O. Ciampi, B. Bonandrini, M. Derosas, S. Conti, P. Rizzo, V. Benedetti, M. Figliuzzi, A. Remuzzi, A. Benigni, G. Remuzzi and S. Tomasoni, *Sci. Rep.*, 2019, **9**, 8001.
- 100 I. Ullah, J. F. Busch, A. Rabien, B. Ergün, C. Stamm, C. Knosalla, S. Hippenstiel, P. Reinke and A. Kurtz, *Adv. Sci.*, 2020, **7**, 1901198.
- 101 C. Du, K. Narayanan, M. F. Leong, M. S. Ibrahim, Y. P. Chua, V. M. H. Khoo and A. C. A. Wan, *Adv. Healthc. Mater.*, 2016, **5**, 2080–2091.
- 102 D. G. Leuning, F. M. R. Witjas, M. Maanaoui, A. M. A. de Graaf, E. Lievers, T. Geuens, C. M. Avramut, L. E. Wiersma, C. W. van den Berg, W. M. P. J. Sol, H. de Boer, G. Wang, V. L. S. LaPointe, J. van der Vlag, C. van Kooten, B. M. van den Berg, M. H. Little, M. A. Engelse and T. J. Rabelink, *Am. J. Transplant.*, 2019, **19**, 1328–1343.
- 103 Z. Tan, A. Rak-Raszewska, I. Skovorodkin and S. J. Vainio, *Cells*, 2020, **9**(2), 329.
- 104 A. Remuzzi, M. Figliuzzi, B. Bonandrini, S. Silvani, N. Azzollini, R. Nossa, A. Benigni and G. Remuzzi, *Sci. Rep.*, 2017, **7**, 43502.
- 105 Y. Guan, S. Liu, C. Sun, G. Cheng, F. Kong, Y. Luan, X. Xie, S. Zhao, D. Zhang, J. Wang, K. Li and Y. Liu, *Oncotarget*, 2015, **6**(34), 36126–36138.
- 106 M. Caralt, J. S. Uzarski, S. Iacob, K. P. Oberfell, N. Berg, B. M. Bijonowski, K. M. Kiefer, H. H. Ward, A. Wandinger-Ness, W. M. Miller, Z. J. Zhang, M. M. Abecassis and J. A. Wertheim, *Am. J. Transplant.*, 2015, **15**, 64–75.
- 107 R. J. Nagao, J. Xu, P. Luo, J. Xue, Y. Wang, S. Kotha, W. Zeng, X. Fu, J. Himmelfarb and Y. Zheng, *Tissue Eng., Part A*, 2016, **22**, 1140–1150.
- 108 V. Magno, J. Friedrichs, H. M. Weber, M. C. Prewitz, M. V. Tsurkan and C. Werner, *Acta Biomater.*, 2017, **55**, 109–119.
- 109 J. Su, S. C. Satchell, R. N. Shah and J. A. Wertheim, *J. Biomed. Mater. Res., Part A*, 2018, **106**, 2448–2462.
- 110 C. Zhou, L. Zhou, J. Liu, L. Xu, Z. Xu, Z. Chen, Y. Ge, F. Zhao, R. Wu, X. Wang, N. Jiang, L. Mao and R. Jia, *Acta Biomater.*, 2020, **115**, 250–263.
- 111 J. D. O'Neill, D. O. Freytes, A. J. Anandappa, J. A. Oliver and G. V. Vunjak-Novakovic, *Biomaterials*, 2013, **34**, 9830–9841.



- 112 E. Lih, K. W. Park, S. Y. Chun, H. Kim, T. G. Kwon, Y. K. Joung and D. K. Han, *ACS Appl. Mater. Interfaces*, 2016, **8**, 21145–21154.
- 113 R. Sobreiro-Almeida, D. R. Fonseca and N. M. Neves, *Mater. Sci. Eng., C*, 2019, **103**, 109866.
- 114 R. Sobreiro-Almeida, M. E. Melica, L. Lasagni, P. Romagnani and N. M. Neves, *Acta Physiol.*, 2020, **230**, e13491.
- 115 A. E. Jakus, M. M. Laronda, A. S. Rashedi, C. M. Robinson, C. Lee, S. W. Jordan, K. E. Orwig, T. K. Woodruff and R. N. Shah, *Adv. Funct. Mater.*, 2017, **27**, 1700992.
- 116 M. Ali, A. K. Pr, J. J. Yoo, F. Zahran, A. Atala and S. J. Lee, *Adv. Healthc. Mater.*, 2019, **8**, 1800992.
- 117 N. K. Singh, W. Han, S. A. Nam, J. W. Kim, J. Y. Kim, Y. K. Kim and D.-W. Cho, *Biomaterials*, 2020, **232**, 119734.
- 118 S. J. Lee, H.-J. Wang, T.-H. Kim, J. S. Choi, G. Kulkarni, J. D. Jackson, A. Atala and J. J. Yoo, *Stem Cells Transl. Med.*, 2018, **7**, 241–250.
- 119 A. A. El-Rashidy, A. Gad, A. E.-H. G. Abu-Hussein, S. I. Habib, N. A. Badr and A. A. Hashem, *Int. J. Biol. Macromol.*, 2015, **79**, 618–626.
- 120 H. Wu, R. Zhang, B. Hu, Y. He, Y. Zhang, L. Cai, L. Wang, G. Wang, H. Hou and X. Qiu, *Chin. Chem. Lett.*, 2021, **32**, 3940–3947.
- 121 T. E. Kruger, A. H. Miller and J. Wang, *Sci. World J.*, 2013, **2013**, 812718.
- 122 P. C. Wang and T. Takezawa, *J. Biosci. Bioeng.*, 2005, **99**, 529–540.
- 123 S. H. Lu, Q. X. Lin, Y. N. Liu, Q. Gao, T. Hao, Y. Wang, J. Zhou, H. B. Wang, Z. Y. Du, J. Wu and C. Y. Wang, *J. Tissue Eng. Regener. Med.*, 2012, **6**, 786–792.
- 124 J. Huling, I. K. Ko, A. Atala and J. J. Yoo, *Acta Biomater.*, 2016, **32**, 190–197.
- 125 J. M. Koli, S. Basu, B. B. Nayak, N. Kannuchamy and V. Gudipati, *J. Food Sci.*, 2011, **76**, E503–E509.
- 126 S. Khunmanee, S. Y. Chun, Y.-S. Ha, J. N. Lee, B. S. Kim, W.-W. Gao, I. Y. Kim, D. K. Han, S. You, T. G. Kwon and H. Park, *Tissue Eng. Regener. Med.*, 2022, **19**, 643–658.
- 127 X. D. Geng, W. Zheng, C. M. Wu, S. Q. Wang, Q. Hong, G. Y. Cai, X. M. Chen and D. Wu, *China Med. J.*, 2016, **129**, 392–398.
- 128 X. Geng, Q. Hong, K. Chi, S. Wang, G. Cai and D. Wu, *BioMed Res. Int.*, 2019, **2019**, 6749326.
- 129 M. Hu, E. U. Azeloglu, A. Ron, K.-H. Tran-Ba, R. C. Calizo, I. Tavassoly, S. Bhattacharya, G. Jayaraman, Y. Chen, V. Rabinovich, R. Iyengar, J. C. Hone, J. C. He and L. J. Kaufman, *Sci. Rep.*, 2017, **7**, 43934.
- 130 M. Erencia, F. Cano, J. A. Tornero, M. M. Fernandes, T. Tzanov, J. Macanás and F. Carrillo, *J. Appl. Polym. Sci.*, 2015, **132**(25), 1–11.
- 131 K. A. Homan, D. B. Kolesky, M. A. Skylar-Scott, J. Herrmann, H. Obuobi, A. Moisan and J. A. Lewis, *Sci. Rep.*, 2016, **6**, 34845.
- 132 L. Ouyang, R. Yao, X. Chen, J. Na and W. Sun, *Biofabrication*, 2015, **7**, 015010.
- 133 I. D. Hay, Z. Ur Rehman, M. F. Moradali, Y. Wang and B. H. Rehm, *Microb. Biotechnol.*, 2013, **6**, 637–650.
- 134 A. D. Augst, H. J. Kong and D. J. Mooney, *Macromol. Biosci.*, 2006, **6**, 623–633.
- 135 M. Szekalska, A. Puciłowska, E. Szymańska, P. Ciosek and K. Winnicka, *Int. J. Polym. Sci.*, 2016, **2016**, 7697031.
- 136 T. L. Chu, G. Tripathi, M. Park, S.-H. Bae and B.-T. Lee, *Int. J. Biol. Macromol.*, 2022, **211**, 616–625.
- 137 M. F. A. Goosen, G. M. O'Shea, H. M. Gharapetian, S. Chou and A. M. Sun, *Biotechnol. Bioeng.*, 1985, **27**, 146–150.
- 138 E. Trouche, S. G. Fullana, C. Mias, C. Ceccaldi, F. Tortosa, M. H. Seguelas, D. Calise, A. Parini, D. Cussac and B. Sallerin, *Cell Transplantation*, 2010, **19**, 1623–1633.
- 139 T. Geuens, F. A. A. Ruiter, A. Schumacher, F. L. C. Morgan, T. Rademakers, L. E. Wiersma, C. W. van den Berg, T. J. Rabelink, M. B. Baker and V. L. S. LaPointe, *Biomaterials*, 2021, **275**, 120976.
- 140 S. Reakasame and A. R. Boccaccini, *Biomacromolecules*, 2018, **19**, 3–21.
- 141 F. A. A. Ruiter, F. L. C. Morgan, N. Roumans, A. Schumacher, G. G. Slaats, L. Moroni, V. L. S. LaPointe and M. B. Baker, *Adv. Sci.*, 2022, **9**, 2200543.
- 142 G. Addario, S. Djurdjaj, S. Farè, P. Boor, L. Moroni and C. Mota, *Bioprinting*, 2020, **20**, e00108.
- 143 A. Z. Unal and J. L. West, *Bioconjugate Chem.*, 2020, **31**, 2253–2271.
- 144 A. I. Astashkina, B. K. Mann, G. D. Prestwich and D. W. Grainger, *Biomaterials*, 2012, **33**, 4700–4711.
- 145 A. I. Astashkina, B. K. Mann, G. D. Prestwich and D. W. Grainger, *Biomaterials*, 2012, **33**, 4712–4721.
- 146 S. Clerkin, J. K. Wychowanec, K. Singh, J. L. Davis, N. J. Treacy, I. Krupa, D. F. Brougham and J. Crean, *FASEB J.*, 2022, **36**, R3064.
- 147 S. C. Satchell, C. H. Tasman, A. Singh, L. Ni, J. Geelen, C. J. von Ruhland, M. J. O'Hare, M. A. Saleem, L. P. van den Heuvel and P. W. Mathieson, *Kidney Int.*, 2006, **69**, 1633–1640.
- 148 V. Volkov, A. V. Ferreira and A. Cavaco-Paulo, *Macromol. Mater. Eng.*, 2015, **300**(12), 1199–1216.

