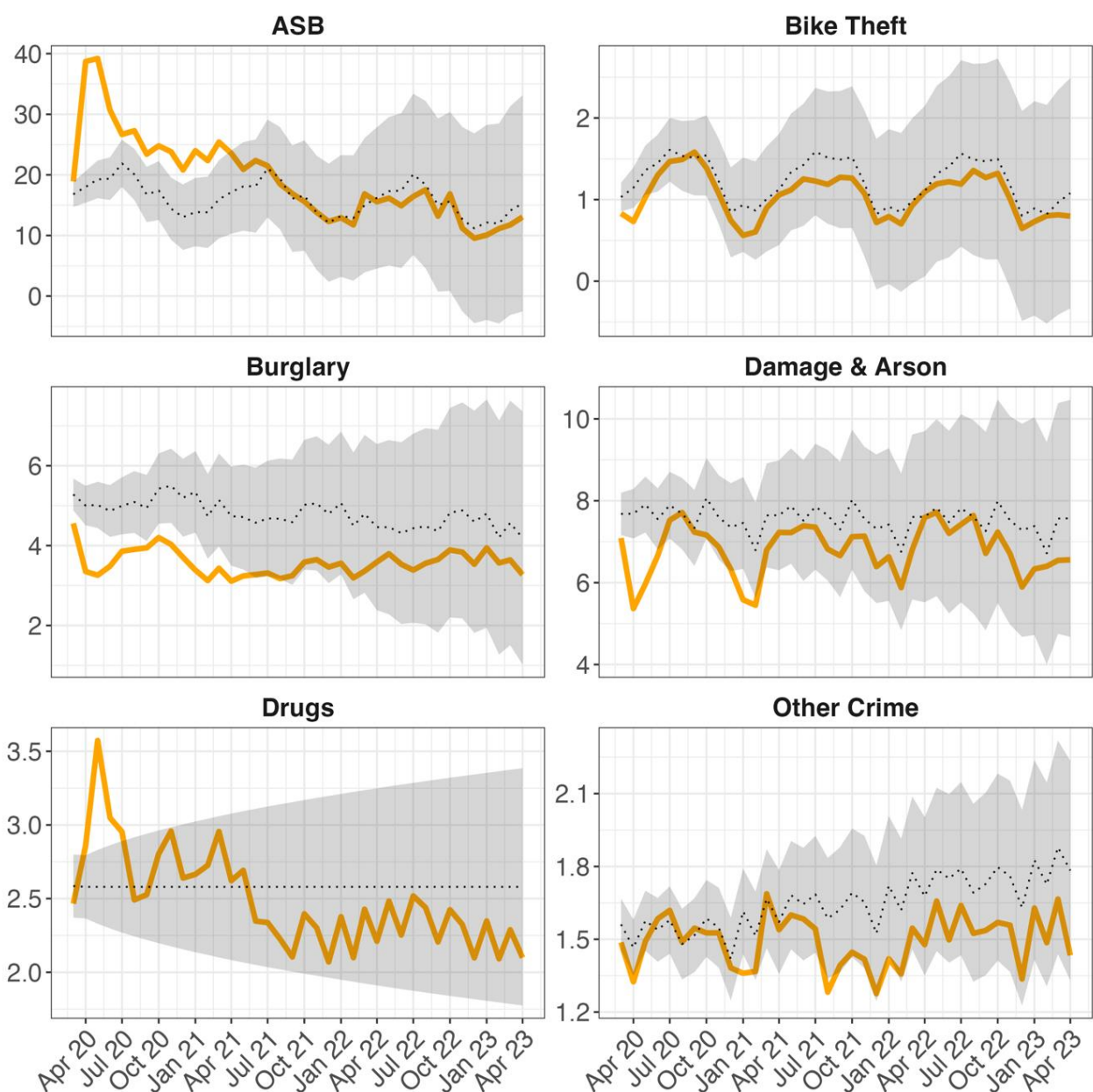


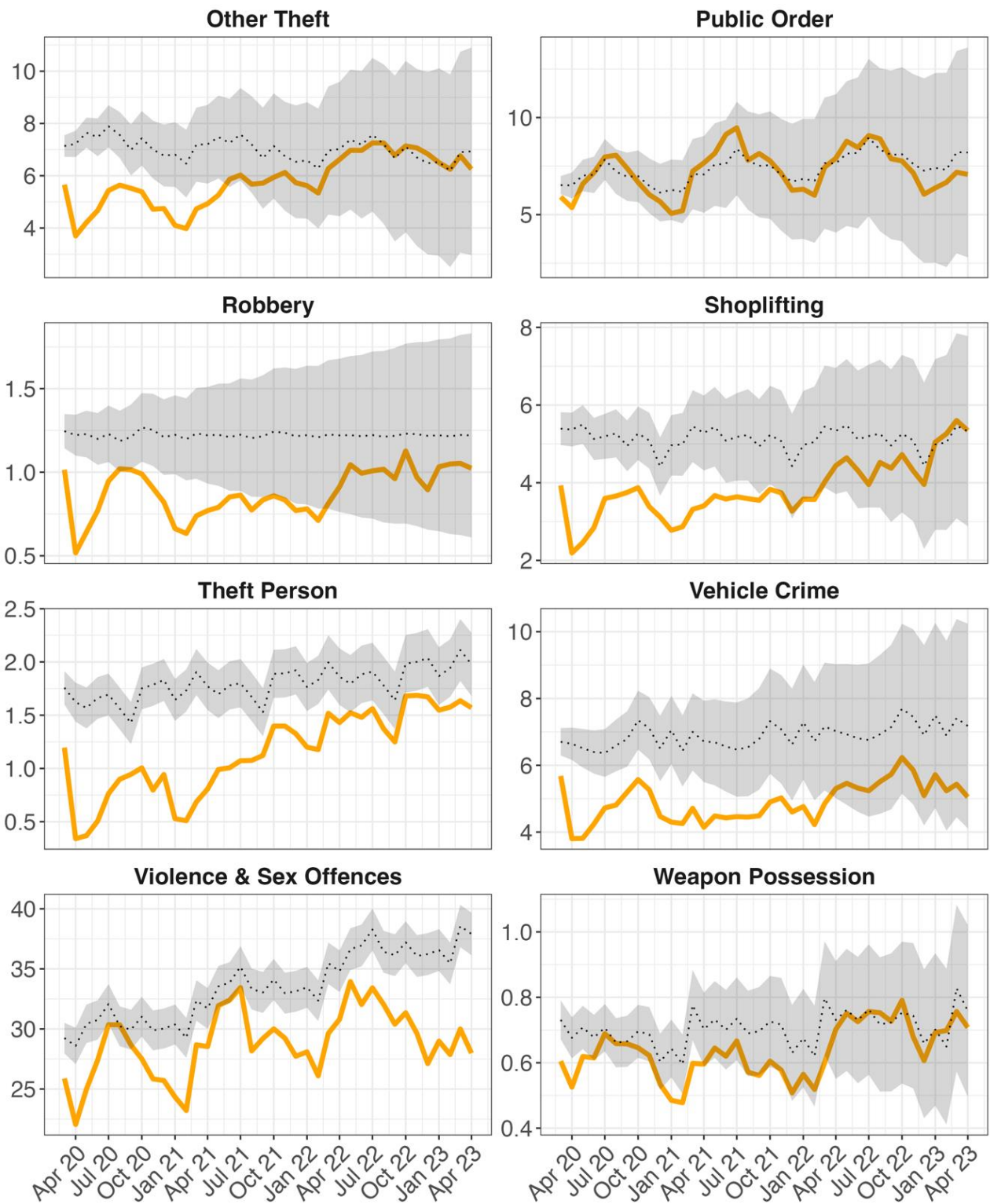


Post-Pandemic? Crime in England and Wales to April 2023

Hulya Seyidoglu, Anthony Dixon, Jose Pina-Sanchez, Nicolas Malleson and Graham Farrell, University of Leeds

Recorded shoplifting increased sharply in 2023 to meet expected levels for the first time. However many crimes remained well below expected level including violence and sexual offences (-25%), theft from the person (-20%), burglary (-20%), damage and arson (-13%), robbery (-16%) and vehicle crime (-29%), suggesting WFH and other legacies continue to affect many crime rates. Recorded crime rates per 10,000 population are in orange, expected rates are dashed, with grey-shaded 95% CIs. The confidence intervals around the ARIMA model forecasts are larger by 2023, but for the most part the predictions still work well: note how ASB, bike theft and weapons possession have tracked their forecasts for some time.





Source: data.police.uk - all police services except Greater Manchester. Expected rates calculated with Hyndman et al.'s (2020) AutoARIMA R package. © The Authors (2023). DOI: <http://doi.org/10.5518/100/42> ISSN: 2634-4424. This work licensed under a Creative Commons (CC-BY 4.0). Acknowledgement to Economic and Social Research Council grant ES/V00445X/1. See www.covid19-crime.com.