



Deposited via The University of Leeds.

White Rose Research Online URL for this paper:

<https://eprints.whiterose.ac.uk/id/eprint/196395/>

Version: Supplemental Material

Article:

Kuttippurath, J, Ardra, D, Raj, S et al. (2023) A seasonal OH minimum region over the Indian Ocean? *Atmospheric Environment*, 295. 119536. ISSN: 1352-2310

<https://doi.org/10.1016/j.atmosenv.2022.119536>

© 2022 Elsevier Ltd. All rights reserved. This manuscript version is made available under the CC-BY-NC-ND 4.0 license <http://creativecommons.org/licenses/by-nc-nd/4.0/>.

Reuse

This article is distributed under the terms of the Creative Commons Attribution-NonCommercial-NoDerivs (CC BY-NC-ND) licence. This licence only allows you to download this work and share it with others as long as you credit the authors, but you can't change the article in any way or use it commercially. More information and the full terms of the licence here: <https://creativecommons.org/licenses/>

Takedown

If you consider content in White Rose Research Online to be in breach of UK law, please notify us by emailing eprints@whiterose.ac.uk including the URL of the record and the reason for the withdrawal request.



SUPPLEMENTARY DATA

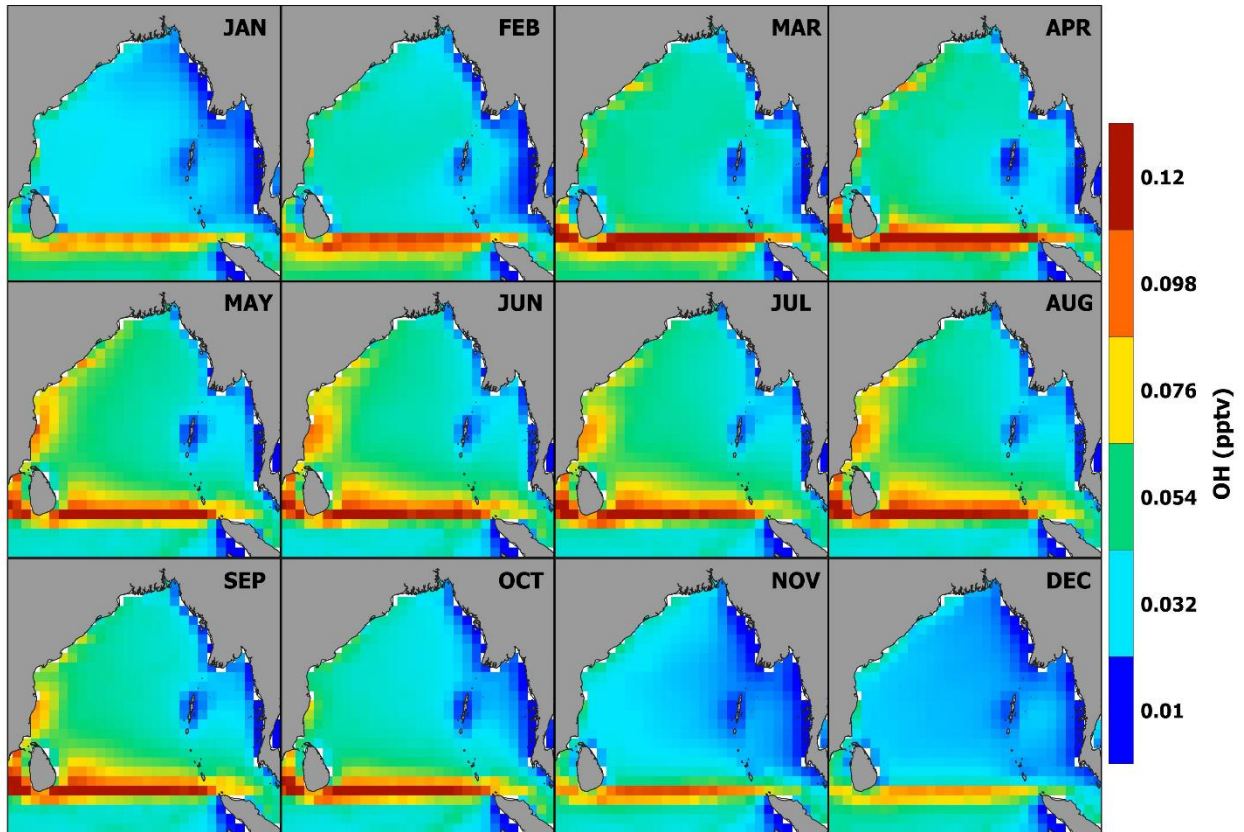


Figure S1: Monthly distribution of surface OH as analysed from the CAMS reanalyses, averaged over the period 2003-2018. The months are denoted by the first three letters of each month (e.g. JAN is January).

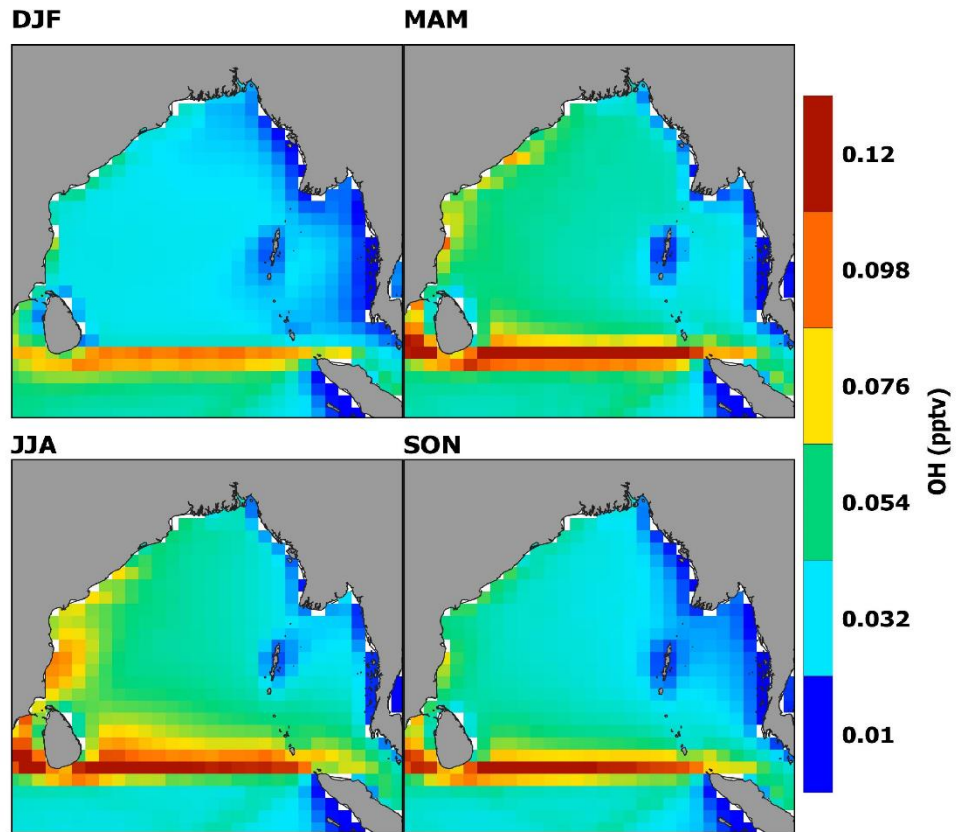


Figure S2: Seasonal distribution of surface OH as analysed from the CAMS reanalyses, averaged over the period 2003-2018. The seasons are defined by winter as DJF, spring as MAM, summer as JJA and autumn as SON.

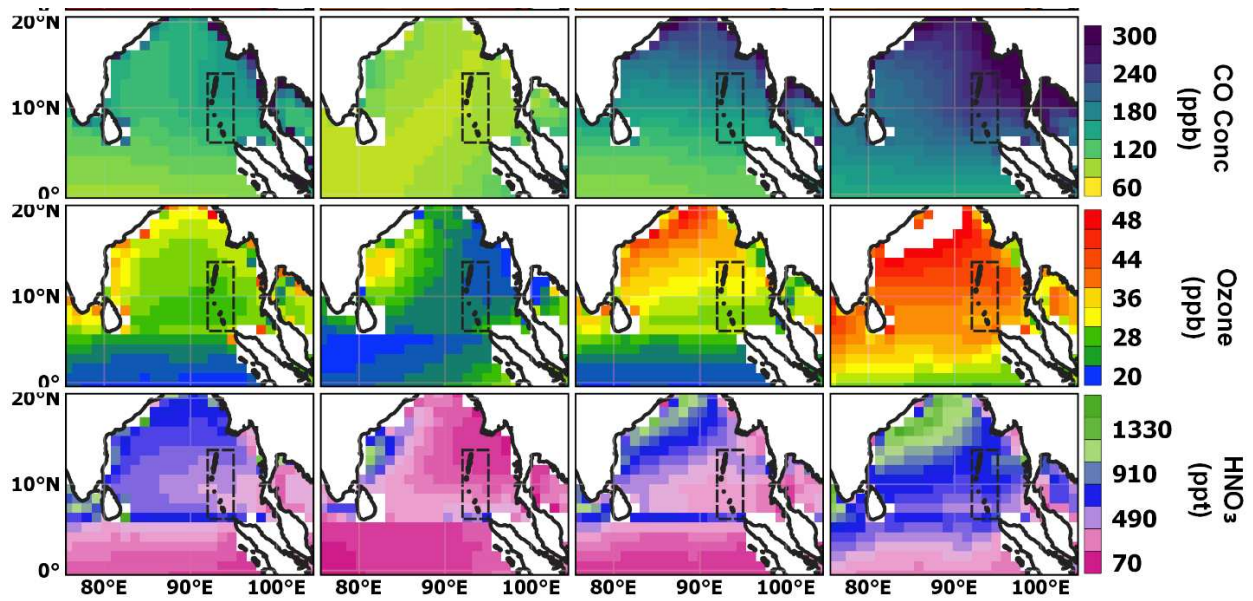


Figure S3: Seasonal distribution of CO, ozone and HNO₃ as analysed from the TES reanalyses, averaged over the period 2003-2018. The seasonal data are presented as spring (left), summer (second column from left), autumn (third column from left) and winter (right).

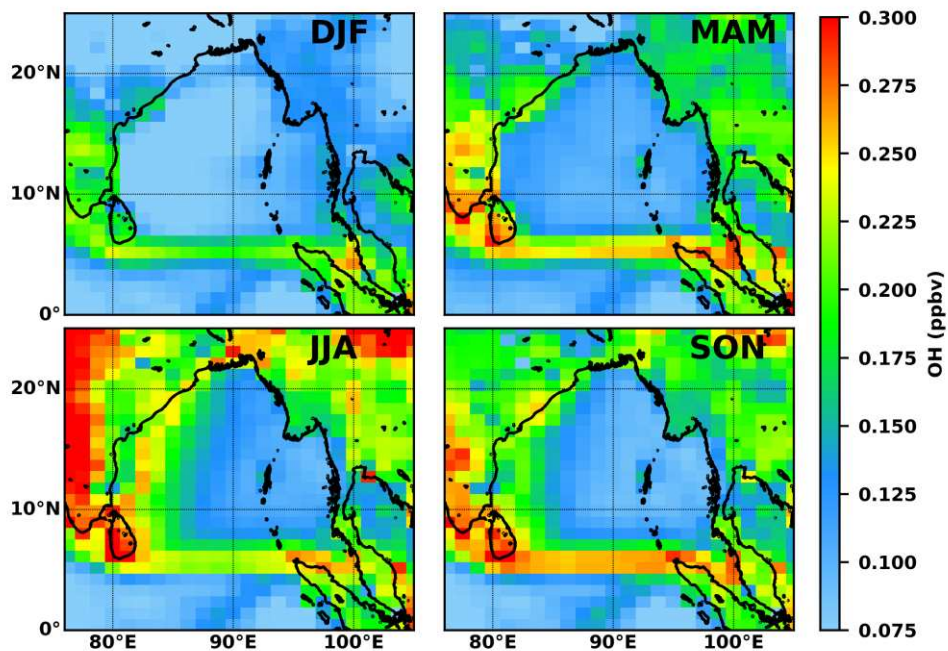


Figure S4: Seasonal distribution of surface OH as analysed from the WACCM model results for the year 2005. The seasons are defined by winter as DJF, spring as MAM, summer as JJA and autumn as SON.

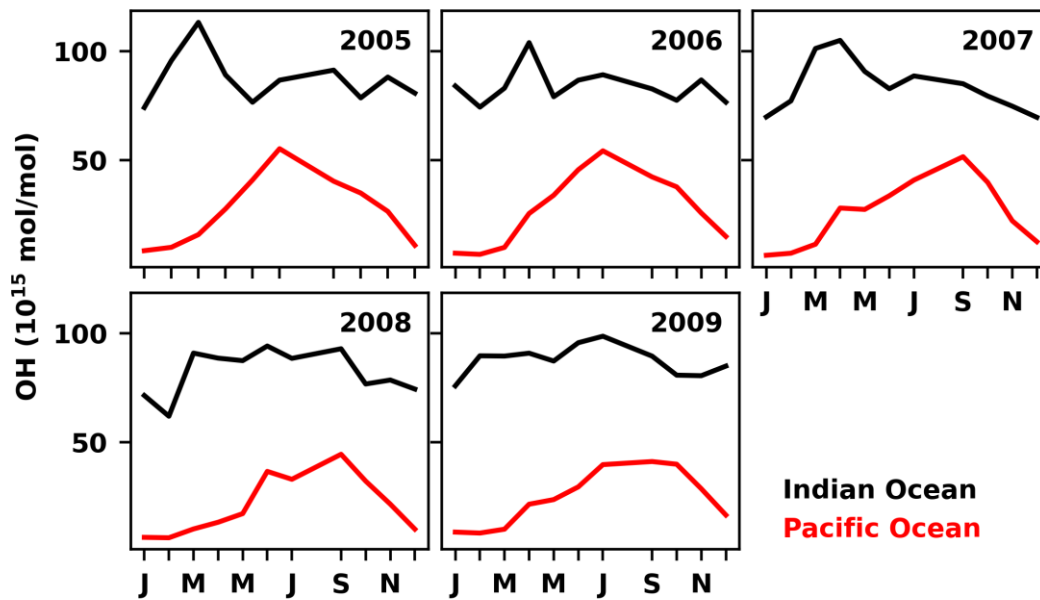


Figure S5: Monthly distribution of surface OH minimum values in Indian and Pacific Oceans as analysed from the WACCM model results for selected years. The months are marked with the first letter of their names, starting with J as January on the x-axis.