

This is a repository copy of *Pathways of degradation in rangelands in Northern Tanzania show their loss of resistance, but potential for recovery.*

White Rose Research Online URL for this paper:

<https://eprints.whiterose.ac.uk/196124/>

Version: Accepted Version

Article:

Wiethase, Joris, Critchlow, Rob, Foley, Charles et al. (9 more authors) (Accepted: 2023)
Pathways of degradation in rangelands in Northern Tanzania show their loss of resistance, but potential for recovery. Scientific Reports. ISSN 2045-2322 (In Press)

Reuse

Items deposited in White Rose Research Online are protected by copyright, with all rights reserved unless indicated otherwise. They may be downloaded and/or printed for private study, or other acts as permitted by national copyright laws. The publisher or other rights holders may allow further reproduction and re-use of the full text version. This is indicated by the licence information on the White Rose Research Online record for the item.

Takedown

If you consider content in White Rose Research Online to be in breach of UK law, please notify us by emailing eprints@whiterose.ac.uk including the URL of the record and the reason for the withdrawal request.

1 Pathways of degradation in rangelands in Northern 2 Tanzania show their loss of resistance, but potential 3 for recovery

4 Joris H. Wiethase^{1,*,+}, Rob Critchlow^{1,+}, Charles Foley², Lara Foley², Elliot J. Kinsey³,
5 Brenda G. Bergman³, Boniface Osujaki⁴, Zawadi Mbwambo⁵, Paul Baran Kirway⁴, Kelly R.
6 Redeker¹, Susan E. Hartley⁶, and Colin M. Beale^{1,7}

7 ¹University of York, Department of Biology, York, YO10 5DD, GB

8 ²Lincoln Park Zoo, Tanzania Conservation Research Program, Chicago, Illinois, 60614, US

9 ³The Nature Conservancy, Arlington, Virginia, 22203, US

10 ⁴Independent contributor

11 ⁵Zoological Society of London, Tanzania Program, London, NW1 4RY, GB

12 ⁶University of Sheffield, School of Biosciences, Sheffield, S10 2TN, GB

13 ⁷University of York, York Environmental Sustainability Institute, York, YO10 5DD, GB

14 *jhw538@york.ac.uk

15 +these authors contributed equally to this work

16 ABSTRACT

17 Semiarid rangelands are identified as at high risk of degradation due to anthropogenic pressure and climate change. Through tracking timelines of degradation we aimed to identify whether degradation results from a loss of resistance to environmental shocks, or loss of recovery, both of which are important prerequisites for restoration. Here we combined extensive field surveys with remote sensing data to explore whether long-term changes in grazing potential demonstrate loss of resistance (ability to maintain function despite pressure) or loss of recovery (ability to recover following shocks). To monitor degradation, we created a bare ground index: a measure of grazeable vegetation cover visible in satellite imagery, allowing for machine learning based image classification. We found that locations that ended up the most degraded tended to decline in condition more during years of widespread degradation but maintained their recovery potential. These results suggest that resilience in rangelands is lost through declines in resistance, rather than loss of recovery potential. We show that the long-term rate of degradation correlates negatively with rainfall and positively with human population and livestock density, and conclude that sensitive land and grazing management could enable restoration of degraded landscapes, given their retained ability to recover.

18 Introduction

19 Covering 47% of the terrestrial surface, rangelands are home to one third of the global population, many of whom are
20 pastoralists who depend on rangelands to meet their daily need for shelter, water and food¹⁻³. Rangelands are also home to
21 diverse ecosystems, including iconic wilderness areas such as the Serengeti and Ngorongoro. Because rangelands develop in
22 semi-arid areas and are primarily used for grazing, they are often perceived as highly vulnerable to changes in rainfall and
23 anthropogenic pressures^{4,5}. With evidence of growing loss and degradation within rangelands and other semi-arid regions, the
24 UN established the Convention to Combat Desertification (UNCCD) in 1996⁶). Although a primary concern that led to the
25 UNCCD were a series of Sahelian droughts that have now ended, concern about loss of rangelands and increasing degradation
26 among the remaining rangeland areas has continued^{7,8}). If we are to effectively combat degradation within rangelands, it is
27 important that we understand the drivers of mechanisms by which degradation occurs.

28
29 The UNCCD identifies Africa as particularly vulnerable, estimating that land degradation is affecting more than half the
30 continent's population⁹. Here, rangelands are synonymous with savanna, a biome defined by the presence of C4 grasses,
31 generally occurring in regions with rainfall between 450 mm and 1500 mm per year and often maintained by fire¹⁰⁻¹². The
32 savanna biome encompasses several habitats, from open grasslands to deciduous woodlands. A key aspect of savanna ecosys-
33 tems is their high temporal and spatial heterogeneity, a factor that necessitates mobility in human and wildlife populations to
34 exploit patchy resources^{13,14}. Societal and land use constraints limit the ability of populations to move when conditions be-

35 come temporarily unsuitable, and sustained grazing alters the dynamics of savannas, reducing their ability to sustain grazing^{15,16}.

36
37 Heavy, year-round grazing in savannas reduces grazing potential (i.e. quantity of vegetation palatable to grazers) through
38 two pathways that result in either land invaded by toxic and unpalatable plants, including bush encroachment^{8,17}, or in bare
39 ground experiencing soil loss¹⁸. Rangeland degradation has been defined as a long-term decline in productivity resulting in
40 rangelands unsuitable for grazing (IPBES¹⁹), rather than short-term declines driven by temporal variability of environmental
41 conditions (e.g. rainfall, grazing pressure). Such degradation has been linked to rainfall patterns²⁰, and might be exacerbated
42 by climate-change driven changes in annual rainfall variability, already widely observed across African savannas²¹. At either
43 end of the savanna rainfall gradient, continued precipitation change may interact with pressures like grazing in a way that
44 leads to permanent loss of savannas. Further research into the relationship of these interacting factors with long-term trends of
45 degradation is needed to better understand their importance for sustainable rangeland management.

46
47 Degradation and loss of savannas is already a primary driver of poverty and displacement of human populations in Africa.
48 With a rapidly growing human population (averaging a growth rate of 2.2% per year in Africa²²), the anthropogenic demands
49 on savannas are growing, while the pressures from climate change are simultaneously mounting^{3,23}. In a recent study, Hill and
50 Guerschman (2020) identified East Africa as a focal point for increases in bare ground cover, and recommended investigating
51 these trends at a finer spatial scale²⁴. In order to meet growing demands from humans and their livestock in the face of
52 potentially deteriorating environmental conditions we must identify how to increase sustainability of savanna use.

53
54 Resistance and recovery are two processes that underpin sustainable use of ecological resources²⁵, particularly in environ-
55 ments that normally function within cycles of change. Together, these processes define the 'resilience' of a system²⁶. Resistance
56 describes the ability of an ecosystem to continue to maintain function (such as the provision of grazing) despite external
57 pressures, while recovery describes the internal processes that pull a system back towards the pre-disturbed state²⁶. In this
58 context, 'shocks' are referred to as any event in the environment that leads to reductions in rangeland condition beyond the
59 typical, interannual oscillation around the baseline state of rangeland health. Such events might include extreme droughts, or
60 heavy rain resulting in floods. It is important to distinguish between resistance and recovery because management aimed at
61 increasing recovery might be different to that designed to increase resistance. For example, in rangelands, resistance may be
62 increased by promoting a high diversity of grass species or a particularly beneficial grass community composition²⁷, while
63 recovery may require, in addition, temporal variation in grazing pressure, for example through temporary grazing exclusion²⁸.

64
65 It is unclear whether the recent trend in savanna degradation is driven by reduced recovery potential, a decline in resis-
66 tance, or both²⁹. Observing the long-term trends of rangeland condition, quantified by a degradation index, helps reveal
67 the mechanisms behind eventual degradation of habitats: If degradation is driven by a loss of recovery, areas that become
68 degraded will show the same short-term response (i.e. reduction in rangeland condition) to external shocks as comparable sites,
69 but would be expected to recover more slowly, and potentially insufficiently, before the next shock occurs. Alternatively, if
70 degradation is driven by a loss of resistance, areas that become degraded will show a greater initial response to shocks, and will
71 therefore be less likely to have recovered to pre-shock conditions before another shock occurs, despite similar recovery rates to
72 more resistant areas. Recovery and resistance are not mutually exclusive, and may interact with land management or rainfall
73 conditions to generate different relative impacts in different areas. Quantifying the relative effects of resistance and recovery is
74 important to identify management priorities for savannas²⁹.

75
76 The rangelands of Northern Tanzania are typical of many African savannas. They are home to significant populations
77 of pastoralists^{3,30} and hold globally important wildlife populations³¹, yet there is widespread concern about their loss and
78 degradation³². Wildlife numbers are falling and poverty is high: degradation has been identified as a key contributor to
79 this problem³³ but is not ubiquitous. Across Northern Tanzanian rangelands there is considerable variation in the degree of
80 degradation and in anthropogenic and environmental drivers of degradation. For example, in our study area, rainfall varies from
81 400 to 900 mm³⁴, human population from 5 to 35 people per km²³⁵ and livestock densities up to 250 head of cattle per km²³⁶.
82 These landscape conditions are also moderated by a variety of conservation-related land use restrictions. The combination of all
83 of these interacting components makes Northern Tanzania an ideal location to study the processes that shape recovery and
84 resistance in rangeland dynamics.

85
86 Here we combine field data on vegetation structure with high-resolution satellite data gathered over the last two decades
87 (a period spanning two severe droughts) to identify the drivers of degradation within Northern Tanzanian rangelands. Our
88 aims were to (1) test whether long-term changes in grazing potential demonstrate loss of resistance, loss of recovery, or
89 both, and (2) identify how spatial variation in land use designation, human and livestock density, and rainfall patterns impact

90 degradation pathways at a fine spatial scale. We hypothesize that drier areas experience higher rates of degradation, and we
91 expect both livestock and human population density to be positively correlated with degradation. We predict that long-term
92 rates of degradation correspond to the degree to which grazing is managed by official land use designation, with areas that have
93 the most grazing restrictions (i.e. national parks) exhibiting the lowest increases in degradation. Finally, we hypothesize that
94 loss of recovery and loss of resistance both contribute to long term degradation patterns.

95 **Methods**

96 To test whether loss of resistance or recovery is the primary mechanism driving degradation in Northern Tanzanian rangelands,
97 we (a) chose key parameters that defined degradation within our study area, (b) quantified variation in degradation across the
98 landscape, and (c) evaluated how degradation changed at specific locations over time. We evaluated bare ground cover and the
99 number of invasive & toxic plants (ITP), measured as the abundance of three key plant species, as candidates for degradation
100 parameters. We used field survey data gathered in 2016 and 2018, across sampling sites stratified throughout the study region,
101 to train a machine learning algorithm. Using this algorithm, we estimated degradation parameters for the years 2000 to 2020,
102 based on Landsat satellite images and rainfall data, taking into account seasonal variation of vegetation productivity. Subsets
103 of survey data were used to ground truth and test model outputs. We then tested whether estimated degradation outcomes
104 correlated with spatial maps of anthropogenic and environmental variation. When considering long-term trends in degradation,
105 we accounted for the effects of temporal and spatial variation in annual rainfall.

106 **Study area**

107 The study area consisted of 30,300 km² of the Tarangire-Manyara ecosystem and Maasai Steppe of northern Tanzania (Figure 1).
108 This is a semi-arid ecosystem, dominated by Acacia-Commiphora woodland². Annual rainfall is bimodal (rains in November
109 to January and March to May) with large inter-annual variability³⁷. The 20 years considered in this study covered multiple
110 positive and negative phases of Indian Ocean Dipole (IOD) and the El Niño–Southern Oscillation (ENSO), which represent
111 large scale climate processes that impact rainfall in East Africa³⁸. Notable droughts in the study region were recorded in 2003-4
112 and 2016-17, when average rainfall was around 50% below average (Foley, unpublished data). The period between October
113 2019 – January 2020 was the wettest recorded in East Africa in over two decades³⁹. The stratified sampling locations fell into
114 areas of four different land use strategies. These included, in descending order according to the degree of grazing restrictions:

- 115 • NP: Two national parks (Tarangire, established 1970, and Lake Manyara, established 1960, where grazing is outlawed,
116 but some illegal grazing persists⁴⁰.
- 117 • WMA: Four wildlife management areas (WMAs) (Enduimet, Randilen, Burunge and Makame), established beginning in
118 2003⁴¹. WMAs primarily give communities the rights to manage wildlife on their lands, as well as grazing activities, but
119 all activities are managed by a WMA board.
- 120 • CCRO: Areas secured by the Certificate of Customary Right of Occupancy (CCRO) initiative⁴², a relatively new
121 intervention implemented beginning in 2015, whereby communities retain land ownership and decide on land use
122 practices.
- 123 • NONE: Land not covered under any official management/protection scheme.

124 **Choice of degradation parameters**

125 Since this study focused on rangeland habitats, we chose degradation parameters from a grazing potential perspective.
126 We followed the Intergovernmental Science-Policy Platform on Biodiversity and Ecosystem Services (IPBES) definition
127 of rangeland degradation, as “persistent loss of vegetation productivity cover, especially of those plants which support
128 herbivores.”¹⁹. Our proposed parameters consisted of an index of bare ground cover (absence of grazeable vegetation cover)
129 and the number of individual ITP, which replace plants palatable to herbivores. The latter consisted of three key plant species,
130 all native to the area, but behaving like invasive plants: *Ipomea hildebrandtii*, an evergreen woody shrub that can significantly
131 decrease grass biomass production^{43,44}; *Solanum campylacanthum*, a thorny shrub which has been shown to be highly toxic
132 to livestock⁴⁵; and *Dichrostachys cinerea*, a fast growing tree species that accounts for the majority of bush encroachment in
133 African savannas⁴⁶.

134 **Baseline ground surveys**

135 We used ground survey data to train and validate remote sensing estimates of degradation. To select survey sites across the
136 study area (Figure 1), we stratified the ecosystem to ensure data collection from a complete representative selection of land
137 cover, vegetation quality and rainfall levels. This survey stratification also allowed manageable sampling and route planning

138 for accessing sites across the ecosystem. The strata were based on combinations of rainfall, mean annual NDVI (vegetation
139 greenness) for the year 2015, and land cover type (grassland and woodland) (see section 'Survey site stratification' for details).
140 We chose April and May as the sampling months since this coincided with the end of the wet season and consequential peak
141 vegetation growth, enabling plant species identification⁴⁷. We randomly selected 250 cells evenly across all strata to sample
142 using a basic vegetation survey, with the centre of each 500 m cell selected as the focal sampling point for the vegetation survey.
143 Neighbouring cells were excluded. Some 43 target cells were unsuitable (e.g. recently cleared crops) or inaccessible, resulting
144 in 208 cells sampled between April and May 2016. To increase the geographic spread of sampling locations, during April 2018
145 additional 48 vegetation surveys were carried out across the ecosystem, three of which targeted areas containing *D. cinerea*.
146 This allowed us to train the machine learning algorithm on a wider range of values, improving the performance when applied
147 over the full study region. The total number of survey locations used in the analysis was 256.

148 At each survey site (Figure 1), we collected data based on the Monitoring Rangeland Health guide⁴⁷, which is designed for
149 rapid vegetation and degradation assessments with minimal equipment. Measurements were taken at sampling points every five
150 meters along four 25 m transects extending north, east, south and west, resulting in a 50 x 50 m cross, diagonally covering a
151 plot of 35 x 35 m. At every sampling point, measurements were recorded at 5 notches along a 1 m measuring stick, leading to a
152 total of 100 individual data points (25 for each of the four 25 m transects). The following measurements were quantified: (1)
153 The number of invasive and/or toxic rangeland species (*I. hildebrandtii*, *S. campylacanthum* and *D. cinerea*), as a total count of
154 stems at the survey site across all sampling points. (2) The percentage of bare ground, as the percentage of notches falling onto
155 bare ground, across sampling points at the survey site. Measures of plant density and bare ground were not mutually exclusive,
156 e.g. a count of one plant of *D. cinerea* could coincide with a high percentage of bare ground at a given sampling point, in the
157 absence of ground vegetation.

158 Survey site stratification

159 We used remote sensing data (MODIS), accessed and downloaded using the Google Earth Engine (GEE) cloud computing
160 platform⁵⁰, to stratify vegetation survey locations. This stratification allowed us to collect samples over a range of different
161 environmental conditions. The MODIS products included: MOD13A1⁵¹, a 16-day Normalized Difference Vegetation Index
162 (NDVI) composite (a measure of vegetation productivity), at a 500 m resolution from which we calculated the mean NDVI
163 value per grid cell from all 2015 data; MCD12Q1⁵², a land cover product providing five annual classification layers for global
164 land cover at a 500m resolution. Land cover per grid cell was calculated at the most common annual BIOME-Biogeochemical
165 Cycles (BGC) classification between 2001 and 2013; MOD09A1⁵³, an 8-day land surface reflectance product, downloaded for
166 May 2015–April 2016. We further retrieved rainfall data at 0.05° resolution for the years 2000–2020 from CHIRPS version
167 2⁵⁴, a quasi-global dataset, ranging from 50°S to 50°N, that combines satellite imagery with rainfall station data to create
168 a gridded rainfall time series. We calculated mean rainfall for the period 2000–2020, interpolated to the same resolution as
169 the MODIS data. For each 8-day MODIS reflectance tile, we interpolated single missing values in all seven bands due to
170 cloud cover based on the average of the preceding and succeeding tiles. Where there were cells with two or three successive
171 missing values, these were replaced by linear interpolation using the 'na.approx()' function in the 'zoo' package⁵⁵ in R 3.2.2⁵⁶.
172 The sample stratification resulted in a design that spanned a wide rainfall gradient, from 360 mm to 1095 mm total annual rainfall.

174 Estimating degradation parameters, using machine learning

175 We obtained remotely sensed satellite data for the machine learning regression from Landsat through Google Earth Engine, at
176 30 m resolution, which closely matched the 35 m vegetation survey plots. We combined Landsat 5, 7 and 8 products (courtesy
177 of the U.S. Geological Survey) to maximise data coverage for our study period and region. For Landsat 7 products, the scan
178 line correction device failed in May 2003, leading to a 22% loss in values for each scene⁵⁷. A gap-filling function was applied
179 in GEE to mitigate this. For each Landsat product, we calculated per-pixel cloud scores and only included pixels with less than
180 10% cloud cover.

181 Based on the Landsat images, we calculated yearly indices that had the potential to indicate patterns of rangeland degradation
182 at 30 m resolution. All composites were created starting in November the previous year, and ending in October of the given year
183 used for predictions, to capture the seasonality in the region. Vegetation indices are used as a quantitative measure of vegetation
184 productivity; we therefore calculated the enhanced vegetation index (EVI), an index that is optimised for areas with high
185 productivity and variations in soil brightness⁵⁸. Next, we calculated a bare soil index (BSI) based on a formula introduced by
186 Rikimaru et al., which combines the NDVI and normalised difference built-up index⁵⁹, and has been used in similar studies⁶⁰.
187 We calculated the modified soil-adjusted vegetation index (MSAVI), a vegetation index with increased dynamic range over
188 NDVI, and reduced soil background bias⁶¹. We used harmonic regression to calculate trend variables (magnitude, phase) for
189 EVI, BSI, and MSAVI. This allowed us to capture the seasonal change of vegetation indices (i.e. variation in plant phenologies),
190 a quantification that can improve the predictive power of classifiers⁶², and was lacking from the yearly averages used for the
191 remaining indices. Finally, we included the total yearly rainfall at the pixel level, based on CHIRPS data, to account for the

192 potentially strong effect rainfall might have on the chosen degradation parameters. Recognising that the amount of grass present
193 at the end of a rainy season is influenced both by the severity of the preceding dry season and the total rainfall across the
194 previous rainy season, we computed annual rainfall from May in the previous calendar year, to the end of April in the focal
195 year. Supplementary Fig. S1 online provides a conceptual overview of the steps involved in creating the composite layers.
196 Supplementary Table S1 online gives a summary of all predictor variables used to train the model algorithm. To minimise
197 unnecessary computations, a mask layer was created that excluded any data for non-savanna habitat. Supplementary Table S2
198 online gives an overview of data products and parameters used to create the mask.

199
200 Supervised Machine learning regression algorithms were trained and evaluated in GEE. The surface survey data were joined
201 with predictor variables at the respective sampling locations and years (2016 or 2018), and randomly split into a holdout testing
202 partition (25%) and training partition (75%). The training partition was used for repeated random cross-validation, using ten
203 repeats, and 75%-25% splits for training and validation subsets. Model performance was evaluated using the average r-squared
204 value and RMSE with standard deviation for observed vs. predicted results, across all ten repeats. Model parameters were
205 tuned in GEE, and the final, best performing model was evaluated against the testing holdout partition, previously unseen
206 by the model. This workflow provided us with an unbiased approach to evaluate the models ability to generalize, and avoid
207 overfitting⁶³. The predictor variables had very different ranges, and were standardised to improve model performance. The bare
208 ground cover values were skewed towards zero, and an improved model performance was achieved by log-transforming the
209 response: $\log(x+1)$. The final model for the classification was trained using all of the ground truth data available. Different
210 classification algorithms were evaluated. Random forest (RF) and support vector regression (SVR) with radial kernel and nu
211 parameter were chosen since they are known to perform well in remote sensing applications⁶⁴. The accuracy performance of
212 one over the other differs between studies⁶⁴⁻⁶⁶, warranting a direct comparison. While less often used in remote sensing studies,
213 gradient boosting trees (GBT) have outperformed SVR and RBF algorithms on some occasions^{67,68}, and it was therefore
214 included in the comparison. The resulting predictions were back-transformed from the log scale to the original scale for bare
215 ground scores and scaled using the 2016 mean and standard deviation. Final prediction maps were visualised in GEE for every
216 year, to check for abnormalities. Figure 2 gives a conceptual overview of all steps involved in predicting degradation scores,
217 based on the annual composite maps.

218 Data analysis

219 Estimates were made at a 30 m resolution to match the 35 m vegetation plots, but aggregated to 200 m resolution for further
220 analyses using a median. This aggregation reduces stochastic noise potentially arising from extreme values across the 200
221 m pixels (i.e. very high degradation pixels neighbouring very low degradation pixels), at the cost of ignoring fine-scale
222 patterns. We argue, however, that degradation from a grazing perspective is most meaningful if observed at a scale above 30 m
223 resolution and across the larger scales at which grazing decisions are made. To test hypotheses about resistance and recovery,
224 we normalized degradation scores between 0 and 1, and divided the savanna landscape into three even-sized classes identifying
225 the most, least, and medium degraded areas, based on the median degradation scores of the final three years of the time series
226 (2018–2020). If loss of resistance underpins degradation, we anticipated that sites that are most degraded by the end of the time
227 series would show bigger changes during years with large declines in degradation. If lack of recovery underpins degradation we
228 anticipated that the first year of recovery following a large decline would see smaller recoveries in the most degraded areas. As
229 recovery could be measured in absolute or relative terms (i.e. number of units recovered, or proportion of decline recovered) we
230 considered both quantifications. We used two-way ANOVAs in R to statistically compare classes. We estimated the marginal
231 means for covariates based on the model using the 'emmeans' package⁷⁰, and conducted Tukey's post hoc tests for pairwise
232 comparisons. It should be noted that, due to the large sample sizes in these comparisons, traditional statistical significance
233 becomes almost inevitable⁷¹.

234 To test hypotheses regarding the mechanisms leading to degradation, we computed the pixel-wise linear rate of degradation
235 parameters at a 200 m resolution across the entire time series (long-term trend), taking into account the annual variation of
236 rainfall when calculating the slope. We fitted a spatially-explicit hierarchical Bayesian regression model using Integrated
237 Nested Laplace Approximation (INLA) with the Stochastic Partial Differential Equation (SPDE) approach in the package 'R-
238 INLA'⁷²⁻⁷⁴ in R. INLA offers a fast, flexible alternative to Markov-Chain Monte-Carlo methods for fitting complex regression
239 models and allows us to estimate the effects of spatial covariates while accounting for the non-independence of spatial data⁷⁵.
240 The model correlated the long-term rate of degradation to human population density for 2017 (from the Landsat dataset⁷⁶),
241 livestock density for the year 2010 (measured in Tropical Livestock Units based on cattle, goats, and sheep, data from the
242 Gridded Livestock of the World database, FAO⁷⁷), the land use designation (NP, WMA, CCRO, and NONE) as a categorical
243 variable, and total annual rainfall (from the CHIRPS data). Including rainfall as a covariate explicitly accounted for the spatial
244 variation in rainfall, a variable that drives large amounts of variation in grassland productivity^{78,79}, and would likely mask
245 trends if unaccounted for. The statistical power of the regression analysis was related to the number of pixels considered.

246 Supplementary Table S3 online gives an overview of the sample sizes used for the land use designation analysis.

247 Initial models revealed that the estimated range of the spatial autocorrelation was very small, requiring a very fine mesh
248 resolution to fit a smooth SPDE. We created a simple spatial mesh at the point locations using the 'inla.mesh.create' function
249 in 'INLA', extending beyond the study region (using the default settings), to avoid boundary effects of the SPDE. We
250 cross-validated the fit of the model by visually inspecting probability integral transform (PIT) values⁸⁰.

251 Results

252 Model performance

253 The random forest (RF) model slightly outperformed support vector regression (SVR) for predicting the bare ground scores
254 during cross-validation but performed considerably worse on the holdout partition (Table 1), and SVR was chosen for the final
255 classifier model for the bare ground index. Gradient boosting trees performed best on the holdout partition for predicting the
256 number of invasive & toxic plants (ITP), but considerably worse than SVR and RF during cross-validation. SVR performed
257 better than RF during cross-validation, but performed slightly worse than RF on the holdout partition (Table 1), and RF was
258 chosen for the final classifier model for the number of ITP. See Supplementary Fig. S2 online for validation plots of the final
259 models. When visualizing the prediction maps for the number of ITP, we observed inter-annual variation far greater than
260 plausible for relatively slow-growing woody plants (see Supplementary Fig. S3 online), suggesting that the model did not
261 sufficiently differentiate ITP from the remaining vegetation. We therefore excluded this parameter from further analysis and
262 focused on bare ground cover only.

Table 1. Model performance of the different classifiers evaluated for the prediction of a bare ground (BG) and invasive & toxic plants (ITP) index. Values represent averages across 10 random splits of the training partition, with standard deviation. 'Final performance' represents the performance against the holdout partition.

Classifier	Response	RMSE	R ²	Final performance
Random Forest	BG	0.16 (± 0.02)	0.41 (± 0.10)	RMSE: 0.17, R ² : 0.33
	ITP	48 (± 8)	0.53 (± 0.70)	RMSE: 46, R ² : 0.57
Gradient Boosting Tree	BG	0.21 (± 0.02)	0.38 (± 0.1)	RMSE: 0.20, R ² : 0.31
	ITP	57 (± 12)	0.42 (± 0.11)	RMSE: 51, R ² : 0.60
Nu SVR	BG	0.17(± 0.02)	0.38 (± 0.11)	RMSE: 0.15, R ² : 0.43
	ITP	48 (± 9)	0.59 (± 0.11)	RMSE: 65, R ² : 0.54

263 Spatial patterns

264 Maps of bare ground index scores showed expected spatial patterns. We found lower bare ground cover in Tarangire and Lake
265 Manyara national parks, as well as in the forests surrounding the peaks in the north of the study area (Figure 3).

266 Time series analysis

267 Annual rainfall in the study area was variable and corresponded to recorded rainfall extremes. During the drought years of
268 2003–2004, rainfall in the study area remained at a lower level, and rainfall dipped during the drought of 2016–2017 (Figure 4).
269 The extreme rainfall of 2020 had a strong impact in the study area, with the year exhibiting highest recorded rainfall during the
270 timeline (Figure 4). We found clear year-to-year variation in bare ground scores (Figure 4). Consistent land use designation
271 effects were visible throughout the timeline (4A). In most years, national parks showed lower bare ground scores than any other
272 land use designation, with notable exceptions in years of high rainfall (e.g. 2001, 2020). Land that would eventually become
273 CCROs or WMAs often had similarly high bare ground scores to land in the 'NONE' category (4A). Areas that were classified
274 as having most, least and medium bare ground scores at the end of the timeline maintained the same classification throughout
275 the study period (Figure 4B). Recovery years were frequently associated with high annual rainfall (eg. 2001, 2018, 2020)
276 (Figure 4).

277 To assess resistance, we focused on the four years with the largest increase in bare ground scores (2002, 2009, 2011 and
 278 2019). We found that cells in the high bare ground percentile increased in bare ground cover more, on average, than other cells
 279 in three of the four years assessed (Figure 5). Similarly, lowest bare ground percentiles in 2018–2020 also showed the lowest
 280 average increase in bare ground in three of the four years (Figure 5).

281 Looking at the recovery year following large declines, we found that cells ending in the highest bare ground percentile
 282 exhibited lower absolute and relative recovery than other cells in the driest recovery year (2003) 6). In the remaining years, cells
 283 in the ultimately highest bare ground percentile showed higher absolute recovery than other cells, and the difference increased
 284 with higher annual rainfall (6A). In terms of relative recovery, cells in the ultimately highest bare ground percentile showed the
 285 same trend of higher recovery in wetter years, and were the only cells with median net improvement in the wettest year (2020)
 286 (6B).

287 Formal statistical analysis of the cell-specific change of bare ground scores between 2000 and 2020 showed significant
 288 effects of all covariates (Figure 7, Table 2). We found evidence that mean annual rainfall had the strongest effect on the
 289 long-term trend of bare ground scores compared to the other covariates in the model, with drier areas showing steeper increases
 290 in bare ground scores than wetter areas (Figure 7B). We found increases of bare ground scores over the last 20 years in all areas,
 291 independent of land use designation (Figure 7, Table 2). The bare ground cover change in land that had been designated as
 292 CCROs by the end of the time period was no different from land in the NONE category, while national parks and WMAs had
 293 a lower rate of increase in bare ground than NONE (Figure 7D). Both human population density and livestock density had
 294 small correlations with the change of bare ground scores, such that areas with higher human density, as well as more livestock,
 295 experienced increasing bare ground cover rates (Figure 7A, C).

Table 2. Parameter estimates and their 95% credible intervals for INLA model results predicting the rate of bare ground scores over time. Positive estimates correspond with positive rates of bare ground scores, and negative estimates with negative rates of bare ground scores. Parameters with credible intervals that do not overlap zero (bold) may be considered well supported by these Bayesian models.

Parameter	Estimate	Credible intervals
Intercept	0.621	(0.611, 0.631)
Human population density	0.015	(0.011, 0.015)
Rainfall	-0.052	(-0.059, -0.045)
Livestock density	0.015	(0.008, 0.023)
Designation: CCRO	-0.004	(-0.017, 0.008)
Designation: NP	-0.04	(-0.056, -0.025)
Designation: WMA	-0.018	(-0.028, -0.009)

296 Discussion

297 We found evidence that, in our study area, degradation seems to result primarily from a loss of resistance to change, not a lack
 298 of recovery. Land identified in the highest bare ground percentile by the end of the time period experienced slightly larger
 299 declines in condition in most years of widespread annual decline, but maintained recovery potential throughout. Absolute
 300 recovery in ultimately more degraded sites (i.e. sites in the highest bare ground percentile during the last three years of the time
 301 period) was actually slightly greater in all but the driest recovery year. Our results show that, as one shock rapidly follows
 302 another, sites that are ultimately degraded do not have time to fully recover between shocks. Sites with ultimately highest bare
 303 ground scores would have had to repeatedly exhibit net improvement to balance out the increased decline, but this degree of
 304 recovery only occurred during years of high rainfall. As we explicitly included annual rainfall in our models, we do not consider
 305 that large-scale climatic processes on the decadal scale can explain our overall findings. It should be noted that our estimated
 306 degradation scores exhibited significant variation, leading to small median effects. Nonetheless, we observed consistent patterns

307 across years, suggesting that these trends go beyond statistical noise.

308
309 Although there is much in the ecological literature that defines separate concepts for resistance and recovery^{25,26,81}, our
310 results provide evidence that, in this area, repeated environmental shocks are a driver of bare ground cover. However, defining
311 recovery will require more than measuring improvements in our bare ground index. The conceptualization of degradation as
312 delivered through a repeated process of shock followed by partial recovery is important because it gives hope for eventual
313 restoration of these rangelands. Although it seems unlikely that ecological shocks are to decline in frequency given global
314 perturbations of the climate system^{82,83}, the fact that recovery potential remains suggests that reducing factors that decrease
315 resistance to change could allow rapid recovery. Indeed, the ability to recover quickly from year to year has long been at the
316 core of traditional management of these rangelands: heavy use over a few years could lead to severe local degradation, but
317 nomadic people moved away for a few years allowing natural recovery^{84,85}. Today, such movements are increasingly restricted
318 by fragmentation of rangelands, mainly through increasing agriculture^{86,87}, rendering it necessary for pastoralists to remain in
319 what may otherwise have been only temporarily degraded sites^{88,89}, resulting in declining grassland productivity and increased
320 degradation^{20,90,91}.

321
322 Under the current prediction of overall increased rainfall in East Africa^{83,92}, the increased recovery potential with higher
323 rainfall could give hope for the eventual restoration of these rangelands. However, rainfall predictions for the region are
324 complex. Historically, long season rainfall in East Africa has declined^{93,94}. Future climate change is predicted to lead to more
325 intense rainfall on individual days during the long rain season^{83,95,96} and increasing rainfall during the short rain season^{96,97},
326 but also an increase in dry days⁹⁸ and frequency and duration of droughts^{34,99}. Overall, studies predict an increased frequency
327 of high rainfall events associated with storms over Africa, linked to climate change^{100,101}. It is currently unclear how these
328 changing patterns will affect rangeland recovery potential. Due to the temporal resolution of our study, considering total annual
329 rainfall only, we are lacking this insight into the finer scale rainfall patterns driving bare ground cover change. The clear
330 association of rangeland recovery with total rainfall during our study period suggests that temporal variation in rainfall does not
331 yet override the spatial effect of total annual rainfall, but the relationship with rainfall patterns should be explored to evaluate the
332 future risk to rangeland recovery posed by climate change in East Africa. Furthermore, the spatial pattern of rainfall in relation
333 to recovery should be considered. Rainfall in savanna grasslands is characterized by a high spatial patchiness¹⁰². Our study
334 related recovery to rainfall averaged over the whole study area, disregarding local trends, and thus the finer scale responses to
335 rain. Our results are applicable at the wider scale, but more research is needed to confirm the relationship between rainfall and
336 recovery at the regional scale of management areas.

337
338 The general association of rangeland recovery with rainfall highlights a potential caveat of studies including bare ground as
339 a parameter: While bare ground is the most visible expression of resistance and recovery on a wider landscape scale (enabling
340 coarse satellite analyses), it is also potentially misleading, because of the high sensitivity to rainfall. Even rangeland well on its
341 path to degradation (resulting from loss of resistance and/or recovery potential) may show a flush of growth following high
342 rainfall events, leading to short-term variability of bare ground estimates. It is therefore crucial to account for rainfall, as it
343 was done here: i) use rainfall to inform estimates of bare ground cover, ii) consider the long-term trends of bare ground, after
344 factoring out temporal variation in rainfall, and iii) account for spatial variation in rainfall when analysing spatial patterns
345 of bare ground cover. But even where rainfall is accounted for, the use of bare ground alone may present problems. In the
346 context of recovery, for example, we registered a rangeland as 'recovered' if vegetation cover had sufficiently increased, even
347 though this might be through fast-growing invasive or toxic species, rather than palatable grasses. For this bias to lead to false
348 conclusions, however, such invasive and toxic plants would have to be more dominant than grazeable vegetation, during times
349 of regrowth, across the hundreds of pixels considered for this study. Surveys suggest that the majority of these invasives are still
350 low in numbers in the region¹⁰³, although this might become a greater risk in the future.

351
352 We succeeded in generating classified maps of bare ground scores from Landsat images since 2000. Formal validation
353 confirmed pixel-level correlations between observed and predicted test regions for both parameters of interest, bare ground and
354 ITP, but further evaluation based on expected year-to-year variation only validated predictions of bare ground. Using satellite
355 imagery to identify specific vegetation types, particularly at a taxonomic level, has long been a challenge in the field of remote
356 sensing, requiring data at higher resolution than used in this study^{65,66}. With the establishment of the Sentinel-2 program,
357 providing imagery with high spatial (10 m) and temporal (5-day) resolution¹⁰⁴, researchers have increasingly overcome this
358 challenge, particularly through the use of time series analyses, utilizing images at peak vegetation intensity^{66,105}. However,
359 data are not available before 2015, making these data unsuitable for the analysis of longer term trends, as are expected in
360 savanna habitats. The final generated landscape level patterns of bare ground cover in our study were consistent with known
361 land use patterns. Our bare ground scores showed considerable variation year to year, which is consistent with known patterns

of inter-annual variation in grass productivity in semi-arid savannas^{106,107}. We found evidence for increases in bare ground scores across the study area, particularly in the driest areas, exactly as reported elsewhere^{108–110}, and in line with the large scale increases in bare ground observed in East African grasslands over the last two decades²⁴.

We found the expected positive relationship between human density and degradation^{22,108}. Furthermore, we found that increases in bare ground cover were positively correlated with livestock density. While this result corroborates the negative relationship between high grazing intensity and grass biomass observed in African savannas²⁰, the relatively low spatial resolution of the FAO product used to estimate livestock density⁷⁷ lends only limited interpretability to this finding. Under the current predictions of continued growth in human population and demand for livestock products, however, this potential pressure on rangelands is unlikely to decrease. The signs of lower increases of bare ground cover in WMAs and national parks point to their effectiveness in mitigating large scale declines. Finally, we found no evidence for reduced bare ground increases in land that became CCROs. CCROs are a relatively new tool being promoted to enable the effective management of rangelands by local communities^{111–113}, so it may seem surprising that these areas do not show improvements during the final years, especially as our analysis accounts for differences in rainfall and human population density that may differ between sites. In practice, however, CCROs are not in themselves a solution to the problem of degradation: although they establish areas dedicated for grazing, they do not yet provide sufficient management guidance around that grazing¹¹¹. Consequently, once established they may generate grazing honeypots that increase degradation locally, rather than resolve the problems associated with poor land use. However, several CCROs are now engaged in sustainable grazing and management schemes, which might lead to a future reduction of degradation in these areas. Our results show that the ability of these sites to recover if effectively managed is undiminished, which speaks to the potential effectiveness of sustainable management schemes in CCROs. Establishing responsible community management may well be the first step that is needed if degradation is to be reduced. Continued monitoring of rangeland conditions in these areas is needed to establish the effectiveness of these new management strategies. It should be added that the list of CCROs included for the study area is not exhaustive: Due to the time-consuming process involved in establishing these areas, not all boundaries were available at the time of analysis.

Future research should include measurements of finer-scale qualities of rangeland health, to overcome some of the caveats highlighted in this study. Such measurements could include species composition of the vegetation cover, plant traits related to palatability, individual resistance and recovery capacity of plants, or soil properties (e.g. composition, compaction). The latter could provide important insights into the mechanisms of grassland degradation and recovery at a finer spatial scale, given its influence on water retention¹¹⁴, soil erosion^{115,116}, and soil microbial activity¹¹⁷. Additional management techniques could be considered, such as the frequency of fires, an important historic and contemporary management strategy in the region¹¹⁸. These variables may reveal a more complete picture of the pathways to degradation, and enable more effective rangeland management strategies. If the qualities underlying rangelands resistant to degradation are identified, they could be targeted in order to further promote rangeland resistance in the face of greater shocks and stress.

Data and code availability

The code used in Google Earth Engine can be accessed online using the following link:

https://anonymous.4open.science/r/GEE_code_Wiethase_et_al-2246. R code for the data analysis can be accessed online using the following link:

<https://github.com/jwiethase/Wiethase-Scientific-Reports-2022>.

References

1. Asner, G. P., Elmore, A. J., Olander, L. P., Martin, R. E. & Harris, A. T. Grazing systems, ecosystem responses, and global change. *Annu. Rev. Environ. Resour.* **29**, 261–299 (2004).
2. Millenium Ecosystem Assessment Board. *Ecosystems and Human Well-Being: Wetlands and Water: Synthesis* (Island Press, Washington, DC, 2005).
3. Lind, J., Sabates-Wheeler, R., Caravani, M., Kuol, L. B. D. & Nightingale, D. M. Newly evolving pastoral and post-pastoral rangelands of eastern africa. *Pastoralism* **10**, 24 (2020).
4. Hoffman, T. & Vogel, C. Climate change impacts on african rangelands. *Rangelands* **30**, 12–17 (2008).
5. Joyce, L. A. *et al.* Climate change and north american rangelands: assessment of mitigation and adaptation strategies. *Rangel. Ecol. Manag.* **66**, 512–528 (2013).
6. Stringer, L. C., Reed, M. S., Dougill, A. J., Seely, M. K. & Rokitzki, M. Implementing the UNCCD: Participatory challenges. *Nat. Resour. Forum* **31**, 198–211 (2007).

- 413 7. Vågen, T.-G., Winowiecki, L. A., Tondoh, J. E., Desta, L. T. & Gumbricht, T. Mapping of soil properties and land
414 degradation risk in africa using MODIS reflectance. *Geoderma* **263**, 216–225 (2016).
- 415 8. Stevens, N., Lehmann, C. E. R., Murphy, B. P. & Durigan, G. Savanna woody encroachment is widespread across three
416 continents. *Glob. Chang. Biol.* **23**, 235–244 (2017).
- 417 9. Muñoz, P. *et al.* Land degradation, poverty and inequality (2019).
- 418 10. Bond, W. & Keeley, J. Fire as a global ‘herbivore’: the ecology and evolution of flammable ecosystems. *Trends Ecol.*
419 *Evol.* **20**, 387–394 (2005).
- 420 11. Lehmann, C. E. R., Archibald, S. A., Hoffmann, W. A. & Bond, W. J. Deciphering the distribution of the savanna biome.
421 *New Phytol.* **191**, 197–209 (2011).
- 422 12. Staver, A. C., Archibald, S. & Levin, S. A. The global extent and determinants of savanna and forest as alternative biome
423 states. *Science* **334**, 230–232 (2011).
- 424 13. Fuhlendorf, S. D., Fynn, R. W. S., McGranahan, D. A. & Twidwell, D. Heterogeneity as the basis for rangeland
425 management. In Briske, D. D. (ed.) *Rangeland Systems: Processes, Management and Challenges*, Springer Series on
426 Environmental Management, 169–196 (Springer International Publishing, Cham, 2017).
- 427 14. Liao, C., Agrawal, A., Clark, P. E., Levin, S. A. & Rubenstein, D. I. Landscape sustainability science in the drylands:
428 mobility, rangelands and livelihoods. *Landsc. Ecol.* **35**, 2433–2447 (2020).
- 429 15. Galvin, K. A. Transitions: pastoralists living with change. *Annu. Rev. Anthropol.* **38**, 185–198 (2009).
- 430 16. López-i Gelats, F., Fraser, E. D. G., Morton, J. F. & Rivera-Ferre, M. G. What drives the vulnerability of pastoralists to
431 global environmental change? a qualitative meta-analysis. *Glob. Environ. Chang.* **39**, 258–274 (2016).
- 432 17. Obiri, J. F. Invasive plant species and their disaster-effects in dry tropical forests and rangelands of kenya and tanzania.
433 *Jàmhá: J. Disaster Risk Stud.* **3**, 417–428 (2011).
- 434 18. Kioko, J., Kiringe, J. W. & Seno, S. O. Impacts of livestock grazing on a savanna grassland in kenya. *J. Arid Land* **4**,
435 29–35 (2012).
- 436 19. Kotiaho, J. S., Halme, P. & Others. The IPBES assessment report on land degradation and restoration. *Intergov. Sci. Platf.*
437 *on Biodivers. Ecosyst.* (2018).
- 438 20. Western, D., Mose, V. N., Worden, J. & Maitumo, D. Predicting extreme droughts in savannah africa: A comparison of
439 proxy and direct measures in detecting biomass fluctuations, trends and their causes. *PLoS One* **10**, e0136516 (2015).
- 440 21. Dai, A. Drought under global warming: a review. *WIREs Clim. Chang.* **2**, 45–65 (2011).
- 441 22. Holechek, J. L., Cibils, A. F., Bengaly, K. & Kinyamario, J. I. Human population growth, african pastoralism, and
442 rangelands: A perspective. *Rangel. Ecol. Manag.* **70**, 273–280 (2017).
- 443 23. Midgley, G. F. & Bond, W. J. Future of african terrestrial biodiversity and ecosystems under anthropogenic climate
444 change. *Nat. Clim. Chang.* **5**, 823–829 (2015).
- 445 24. Hill, M. J. & Guerschman, J. P. The MODIS global vegetation fractional cover product 2001–2018: Characteristics of
446 vegetation fractional cover in grasslands and savanna woodlands. *Remote. Sens.* **12**, 406 (2020).
- 447 25. Lake, P. S. Resistance, resilience and restoration. *Ecol. Manag. Restor.* **14**, 20–24 (2013).
- 448 26. Hodgson, D., McDonald, J. L. & Hosken, D. J. What do you mean, ‘resilient’? *Trends Ecol. Evol.* **30**, 503–506 (2015).
- 449 27. Tilman, D. & Downing, J. A. Biodiversity and stability in grasslands. *Nature* **367**, 363–365 (1994).
- 450 28. Fedrigo, J. K. *et al.* Temporary grazing exclusion promotes rapid recovery of species richness and productivity in a
451 long-term overgrazed campos grassland. *Restor. Ecol.* **26**, 677–685 (2018).
- 452 29. Ruppert, J. C. *et al.* Quantifying drylands’ drought resistance and recovery: the importance of drought intensity, dominant
453 life history and grazing regime. *Glob. Chang. Biol.* **21**, 1258–1270 (2015).
- 454 30. Homewood, K. M. Policy, environment and development in african rangelands. *Environ. Sci. Policy* **7**, 125–143 (2004).
- 455 31. Caro, T. & Davenport, T. R. B. Wildlife and wildlife management in tanzania. *Conserv. Biol.* **30**, 716–723 (2016).
- 456 32. Bollig, M. & Schulte, A. Environmental change and pastoral perceptions: degradation and indigenous knowledge in two
457 african pastoral communities. *Hum. Ecol.* **27**, 493–514 (1999).
- 458 33. Veldhuis, M. P. *et al.* Cross-boundary human impacts compromise the Serengeti-Mara ecosystem. *Science* **363**, 1424–1428
459 (2019).

- 460 **34.** Nicholson, S. E. Climate and climatic variability of rainfall over eastern africa. *Rev. Geophys.* **55**, 590–635 (2017).
- 461 **35.** *2012 Population and Housing Census* (National Bureau of Statistics, Ministry of Finance, 2013).
- 462 **36.** Kiffner, C., Nagar, S., Kollmar, C. & Kioko, J. Wildlife species richness and densities in wildlife corridors of northern
463 tanzania. *J. Nat. Conserv.* **31**, 29–37 (2016).
- 464 **37.** Foley, C. A. H. & Faust, L. J. Rapid population growth in an elephant *loxodonta africana* population recovering from
465 poaching in tarangire national park, tanzania. *Oryx* **44**, 205–212 (2010).
- 466 **38.** Kebacho, L. L. Large-scale circulations associated with recent interannual variability of the short rains over east africa.
467 *Meteorol. Atmos. Phys.* **134**, 10 (2021).
- 468 **39.** Wainwright, C. M., Finney, D. L., Kilavi, M., Black, E. & Marsham, J. H. Extreme rainfall in east africa, october
469 2019–january 2020 and context under future climate change. *Weather* **76**, 26–31 (2021).
- 470 **40.** Abukari, H. & Mwalyosi, R. B. Comparing pressures on national parks in ghana and tanzania: The case of mole and
471 tarangire national parks. *Glob. Ecol. Conserv.* **15**, e00405 (2018).
- 472 **41.** Kaswamila, A. An analysis of the contribution of community wildlife management areas on livelihood in tanzania.
473 *Sustain. natural resources management* 139–54 (2012).
- 474 **42.** NTRI. Maps | ntri - northern tanzania rangelands initiative. <https://www.ntri.co.tz/maps/> (2016). Accessed: 2021-3-29.
- 475 **43.** Mworira, J., Kinyamario, J. & John, E. Impact of the invader *Ipomoea hildebrandtii* on grass biomass, nitrogen
476 mineralisation and determinants of its seedling establishment in kajiado, kenya. *Afr. J. Range Forage Sci.* **25**, 11–16
477 (2008).
- 478 **44.** Manyanza, N. M. & Ojija, F. Invasion, impact and control techniques for invasive *ipomoea hildebrandtii* on maasai steppe
479 rangelands. *NATO Adv. Sci. Inst. Ser. E Appl. Sci.* **17**, 12 (2021).
- 480 **45.** Thaiyah, A. G. *et al.* Acute, sub-chronic and chronic toxicity of *solanum incanum* L in sheep in kenya. *Kenya Vet.* **35**,
481 1–8 (2011).
- 482 **46.** Roques, K. G., O'Connor, T. G. & Watkinson, A. R. Dynamics of shrub encroachment in an african savanna: relative
483 influences of fire, herbivory, rainfall and density dependence. *J. Appl. Ecol.* **38**, 268–280 (2001).
- 484 **47.** Riginos, C. & Herrick, J. E. Monitoring rangeland health: a guide for pastoralists and other land managers in eastern
485 africa. *Version II* (2010).
- 486 **48.** Farr, T. G. *et al.* The shuttle radar topography mission. *Rev. Geophys.* **45**, RG2004 (2007).
- 487 **49.** QGIS Development Team. *QGIS Geographic Information System*. QGIS Association (2022).
- 488 **50.** Gorelick, N. *et al.* Google earth engine: Planetary-scale geospatial analysis for everyone. *Remote. Sens. Environ.* **202**,
489 18–27 (2017).
- 490 **51.** Didan, K. *MOD13Q1 MODIS/Terra Vegetation Indices 16-Day L3 Global 250m SIN Grid V006 [Data set]* (NASA
491 EOSDIS Land Processes DAAC, 2015).
- 492 **52.** Friedl, M. & Sulla-Menashe, D. *MCD12Q1 MODIS/Terra+ Aqua Land Cover Type Yearly L3 Global 500m SIN Grid*
493 *V006* (NASA EOSDIS Land Processes DAAC, 2019).
- 494 **53.** Vermote, E. MOD09A1 MODIS/terra surface reflectance 8-day L3 global 500m SIN grid V006. *NASA EOSDIS Land*
495 *Process. DAAC* **10** (2015).
- 496 **54.** Funk, C. *et al.* The climate hazards infrared precipitation with stations—a new environmental record for monitoring
497 extremes. *Sci. Data* **2**, 1–21 (2015).
- 498 **55.** Zeileis, A. & Grothendieck, G. zoo: S3 infrastructure for regular and irregular time series. *arXiv:math/0505527* (2005).
- 499 **56.** R Core Team. R: A language and environment for statistical computing. *R Foundation for Stat. Comput. Vienna, Austria*.
500 (2016).
- 501 **57.** Scaramuzza, P. & Barsi, J. Landsat 7 scan line corrector-off gap-filled product development. In *Proceeding of Pecora*,
502 vol. 16, 23–27 (2005).
- 503 **58.** Huete, A. *et al.* Overview of the radiometric and biophysical performance of the MODIS vegetation indices. *Remote.*
504 *Sens. Environ.* **83**, 195–213 (2002).
- 505 **59.** Rikimaru, A., Roy, P. S. & Miyatake, S. Tropical forest cover density mapping. *Trop. Ecol.* 39–47 (2002).

- 506 **60.** Diek, S., Fornallaz, F., Schaepman, M. E. & De Jong, R. Barest pixel composite for agricultural areas using landsat time
507 series. *Remote. Sens.* **9**, 1245 (2017).
- 508 **61.** Qi, J., Chehbouni, A., Huete, A. R., Kerr, Y. H. & Sorooshian, S. A modified soil adjusted vegetation index. *Remote.*
509 *Sens. Environ.* **48**, 119–126 (1994).
- 510 **62.** Adams, B. *et al.* Mapping forest composition with landsat time series: An evaluation of seasonal composites and harmonic
511 regression. *Remote. Sens.* **12**, 610 (2020).
- 512 **63.** Nwanganga, F. & Chapple, M. *Practical machine learning in R* (John Wiley and Sons, Indianapolis, 2020), 1st edn.
- 513 **64.** Adam, E., Mutanga, O., Odindi, J. & Abdel-Rahman, E. M. Land-use/cover classification in a heterogeneous coastal
514 landscape using RapidEye imagery: evaluating the performance of random forest and support vector machines classifiers.
515 *Int. J. Remote. Sens.* **35**, 3440–3458 (2014).
- 516 **65.** Mansour, K., Mutanga, O., Adam, E. & Abdel-Rahman, E. M. Multispectral remote sensing for mapping grassland
517 degradation using the key indicators of grass species and edaphic factors. *Geocarto Int.* **31**, 477–491 (2016).
- 518 **66.** Hunter, F. D. L., Mitchard, E. T. A., Tyrrell, P. & Russell, S. Inter-Seasonal time series imagery enhances classification
519 accuracy of grazing resource and land degradation maps in a savanna ecosystem. *Remote. Sens.* **12**, 198 (2020).
- 520 **67.** Yang, L. *et al.* Estimating surface downward shortwave radiation over china based on the gradient boosting decision tree
521 method. *Remote. Sens.* **10**, 185 (2018).
- 522 **68.** Pham, T. D. *et al.* Estimating mangrove Above-Ground biomass using extreme gradient boosting decision trees algorithm
523 with fused sentinel-2 and ALOS-2 PALSAR-2 data in can gio biosphere reserve, vietnam. *Remote. Sens.* **12**, 777 (2020).
- 524 **69.** Adobe Inc. Adobe illustrator.
- 525 **70.** Lenth, R. V. emmeans: Estimated marginal means, aka Least-Squares means. R package version 1.5.4 (2021).
- 526 **71.** Royall, R. M. The effect of sample size on the meaning of significance tests. *Am. Stat.* **40**, 313–315 (1986).
- 527 **72.** Rue, H., Martino, S. & Chopin, N. Approximate bayesian inference for latent gaussian models by using integrated nested
528 laplace approximations. *J. R. Stat. Soc. Ser. B Stat. Methodol.* **71**, 319–392 (2009).
- 529 **73.** Lindgren, F. & Rue, H. Bayesian spatial modelling with R-INLA. *J. Stat. Softw.* **63**, 1–25 (2015).
- 530 **74.** Bakka, H. *et al.* Spatial modelling with R-INLA: A review. *arXiv:1802.06350 [stat]* (2018).
- 531 **75.** Lobora, A. L. *et al.* Modelling habitat conversion in miombo woodlands: Insights from tanzania. *J. Land Use Sci.*
532 1747423X.2017.1331271 (2017).
- 533 **76.** Bright, E. A., Rose, A. N., Urban, M. L. & McKee, J. LandScan 2017 High-Resolution global population data set. Tech.
534 Rep., Oak Ridge National Lab.(ORNL), Oak Ridge, TN (United States) (2018).
- 535 **77.** Gilbert, M. *et al.* Global distribution data for cattle, buffaloes, horses, sheep, goats, pigs, chickens and ducks in 2010. *Sci*
536 *Data* **5**, 180227 (2018).
- 537 **78.** Yang, Y., Fang, J., Ma, W. & Wang, W. Relationship between variability in aboveground net primary production and
538 precipitation in global grasslands. *Geophys. Res. Lett.* **35** (2008).
- 539 **79.** Guo, Q. *et al.* Spatial variations in aboveground net primary productivity along a climate gradient in eurasian temperate
540 grassland: effects of mean annual precipitation and its seasonal distribution. *Glob. Chang. Biol.* **18**, 3624–3631 (2012).
- 541 **80.** Wang, X., Yue, Y. & Faraway, J. J. *Bayesian Regression Modeling with Inla* (Chapman and Hall/CRC, 2018), 1 edn.
- 542 **81.** Côté, I. M. & Darling, E. S. Rethinking ecosystem resilience in the face of climate change. *PLoS Biol.* **8**, e1000438
543 (2010).
- 544 **82.** O’Loughlin, J. *et al.* Climate variability and conflict risk in east africa, 1990-2009. *Proc. Natl. Acad. Sci.* **109**,
545 18344–18349 (2012).
- 546 **83.** Ongoma, V., Chen, H., Gao, C., Nyongesa, A. M. & Polong, F. Future changes in climate extremes over equatorial east
547 africa based on CMIP5 multimodel ensemble. *Nat. Hazards* **90**, 901–920 (2018).
- 548 **84.** Homewood, K. & Rodgers, W. A. Pastoralism, conservation and the overgrazing controversy. *Conserv. Afr. People,*
549 *policies practice* 111–128 (1987).
- 550 **85.** Scoones, I. Exploiting heterogeneity: habitat use by cattle in dryland zimbabwe. *J. Arid Environ.* **29**, 221–237 (1995).
- 551 **86.** Goldman, M. J. & Riosmena, F. Adaptive capacity in tanzanian maasailand: Changing strategies to cope with drought in
552 fragmented landscapes. *Glob. Environ. Chang.* **23**, 588–597 (2013).

- 553 **87.** Selemani, I. S. & Others. Communal rangelands management and challenges underpinning pastoral mobility in tanzania:
554 a review. *Livest. Res. Rural. Dev.* **26**, 1–12 (2014).
- 555 **88.** Middleton, N. Rangeland management and climate hazards in drylands: dust storms, desertification and the overgrazing
556 debate. *Nat. Hazards* **92**, 57–70 (2018).
- 557 **89.** Sallu, S. M., Twyman, C. & Stringer, L. C. Resilient or vulnerable livelihoods? assessing livelihood dynamics and
558 trajectories in rural botswana. *Ecol. Soc.* **15** (2010).
- 559 **90.** Oba, G. & Lusigi, W. J. *An overview of drought strategies and land use in African pastoral systems* (Agricultural
560 Administration Unit, Overseas Development Institute, 1987).
- 561 **91.** Russell, S., Tyrrell, P. & Western, D. Seasonal interactions of pastoralists and wildlife in relation to pasture in an african
562 savanna ecosystem. *J. Arid Environ.* **154**, 70–81 (2018).
- 563 **92.** Girvetz, E. *et al.* Future climate projections in africa: Where are we headed? In Rosenstock, T. S., Nowak, A. & Girvetz,
564 E. (eds.) *The Climate-Smart Agriculture Papers: Investigating the Business of a Productive, Resilient and Low Emission*
565 *Future*, 15–27 (Springer International Publishing, Cham, 2019).
- 566 **93.** Lyon, B. & DeWitt, D. G. A recent and abrupt decline in the east african long rains. *Geophys. Res. Lett.* **39** (2012).
- 567 **94.** Liebmann, B. *et al.* Climatology and interannual variability of boreal spring wet season precipitation in the eastern horn
568 of africa and implications for its recent decline. *J. Clim.* **30**, 3867–3886 (2017).
- 569 **95.** Shongwe, M. E., van Oldenborgh, G. J., van den Hurk, B. & van Aalst, M. Projected changes in mean and extreme
570 precipitation in africa under global warming. part II: East africa. *J. Clim.* **24**, 3718–3733 (2011).
- 571 **96.** Dunning, C. M., Black, E. & Allan, R. P. Later wet seasons with more intense rainfall over africa under future climate
572 change. *J. Clim.* **31**, 9719–9738 (2018).
- 573 **97.** Rowell, D. P., Booth, B. B. B., Nicholson, S. E. & Good, P. Reconciling past and future rainfall trends over east africa. *J.*
574 *Clim.* **28**, 9768–9788 (2015).
- 575 **98.** Vizzy, E. K. & Cook, K. H. Mid-Twenty-First-Century changes in extreme events over northern and tropical africa. *J.*
576 *Clim.* **25**, 5748–5767 (2012).
- 577 **99.** Gebremeskel Haile, G. *et al.* Droughts in east africa: Causes, impacts and resilience. *Earth-Sci. Rev.* **193**, 146–161
578 (2019).
- 579 **100.** Kendon, E. J. *et al.* Enhanced future changes in wet and dry extremes over africa at convection-permitting scale. *Nat.*
580 *Commun.* **10**, 1794 (2019).
- 581 **101.** Finney, D. L. *et al.* Effects of explicit convection on future projections of mesoscale circulations, rainfall, and rainfall
582 extremes over eastern africa. *J. Clim.* **33**, 2701–2718 (2020).
- 583 **102.** Prins, H. H. T. & Loth, P. E. Rainfall patterns as background to plant phenology in northern tanzania. *J. Biogeogr.* **15**,
584 451–463 (1988).
- 585 **103.** Ngondya, I. B., Treydte, A. C., Ndakidemi, P. A. & Munishi, L. K. Invasive plants: ecological effects, status, management
586 challenges in tanzania and the way forward. *J. Biodivers. Environ. Sci. (JBES)* **10**, 204–217 (2017).
- 587 **104.** Drusch, M. *et al.* Sentinel-2: ESA’s optical High-Resolution mission for GMES operational services. *Remote. Sens.*
588 *Environ.* **120**, 25–36 (2012).
- 589 **105.** Rapinel, S. *et al.* Evaluation of sentinel-2 time-series for mapping floodplain grassland plant communities. *Remote. Sens.*
590 *Environ.* **223**, 115–129 (2019).
- 591 **106.** Li, W. *et al.* Accelerating savanna degradation threatens the maasai mara socio-ecological system. *Glob. Environ. Chang.*
592 **60**, 102030 (2020).
- 593 **107.** Wonkka, C. L., Twidwell, D., Franz, T. E., Taylor, C. A. & Rogers, W. E. Persistence of a severe drought increases
594 desertification but not woody dieback in semiarid savanna. *Rangel. Ecol. Manag.* **69**, 491–498 (2016).
- 595 **108.** Vierich, H. I. D. & Stoop, W. A. Changes in west african savanna agriculture in response to growing population and
596 continuing low rainfall. *Agric. Ecosyst. Environ.* **31**, 115–132 (1990).
- 597 **109.** Fynn, R. W. S. & O’Connor, T. G. Effect of stocking rate and rainfall on rangeland dynamics and cattle performance in a
598 semi-arid savanna, south africa. *J. Appl. Ecol.* **37**, 491–507 (2000).
- 599 **110.** Wang, S., Chen, W., Xie, S. M., Azzari, G. & Lobell, D. B. Weakly supervised deep learning for segmentation of remote
600 sensing imagery. *Remote. Sens.* **12**, 207 (2020).

- 601 **111.** Alananga, S., Makupa, E. R., Moyo, K. J., Matotola, U. C. & Mrema, E. F. Land administration practices in tanzania: A
602 replica of past mistakes. *J. Prop. Plan. Environ. Law* (2019).
- 603 **112.** Huggins, C. Village land use planning and commercialization of land in tanzania. *LANDac Res. Brief* **1** (2016).
- 604 **113.** Stein, H., Maganga, F. P., Odgaard, R., Askew, K. & Cunningham, S. The formal divide: Customary rights and the
605 allocation of credit to agriculture in tanzania. *J. Dev. Stud.* **52**, 1306–1319 (2016).
- 606 **114.** Hall, D. G. M., Reeve, M. J., Thomasson, A. J. & Wright, V. F. *Water retention, porosity and density of field soils* (No.
607 Tech. Monograph N9, 1977).
- 608 **115.** Moore, D. C. & Singer, M. J. Crust formation effects on soil erosion processes. *Soil Sci. Soc. Am. J.* **54**, 1117–1123
609 (1990).
- 610 **116.** Cotler, H. & Ortega-Larrocea, M. P. Effects of land use on soil erosion in a tropical dry forest ecosystem, chamela
611 watershed, mexico. *Catena* **65**, 107–117 (2006).
- 612 **117.** Bach, E. M., Baer, S. G., Meyer, C. K. & Six, J. Soil texture affects soil microbial and structural recovery during grassland
613 restoration. *Soil Biol. Biochem.* **42**, 2182–2191 (2010).
- 614 **118.** Butz, R. J. Traditional fire management: historical fire regimes and land use change in pastoral east africa. *Int. J. Wildland*
615 *Fire* **18**, 442–450 (2009).

616 **Acknowledgements**

617 The research was part of the Northern Tanzanian Rangelands Initiative and funded by USAID through their Endangered
618 Ecosystem Northern Tanzania Initiative (AID-621-A-15-00004), and implemented by The Nature Conservancy. This study
619 received research approval from the Tanzanian Commission for Science and Technology (permit numbers 2016-80-NA-92-43,
620 2016-81-NA-92-43, 2016-97-NA-92-43, 2017-143-ER-92-43 and 2017-147-ER-92-43).

621 Permission for research in communities was obtained from relevant local and district authorities. We are extremely grateful
622 to support from the Tanzania National Parks Authority (TANAPA) and Tanzania Wildlife Management Authority (TAWA) for
623 allowing access to rangelands throughout the study area. We would also like to acknowledge the field and support team - Dr.
624 Alex Lobora, Jumanne Ramadhani (Tanzania Wildlife Research Institute), John Mkindi and Mustafa Hassanali.

625 **Author contributions statement**

626 R.C., C.M.B., C.F., L.F., E.J.K., B.B. conceived and designed the data collection; R.C., B.O., Z.M., and P.B.K. participated in
627 collecting the data; J.H.W., R.C. and C.M.B. analysed the data and interpreted the results; J.H.W., R.C. and C.M.B. drafted the
628 manuscript; J.H.W., R.C., C.M.B., E.J.K., B.B., K.R., S.E.H., C.F. and L.F. substantially revised the manuscript.

629 **Additional information**

630 **Competing interests:** The authors declare no competing interests.

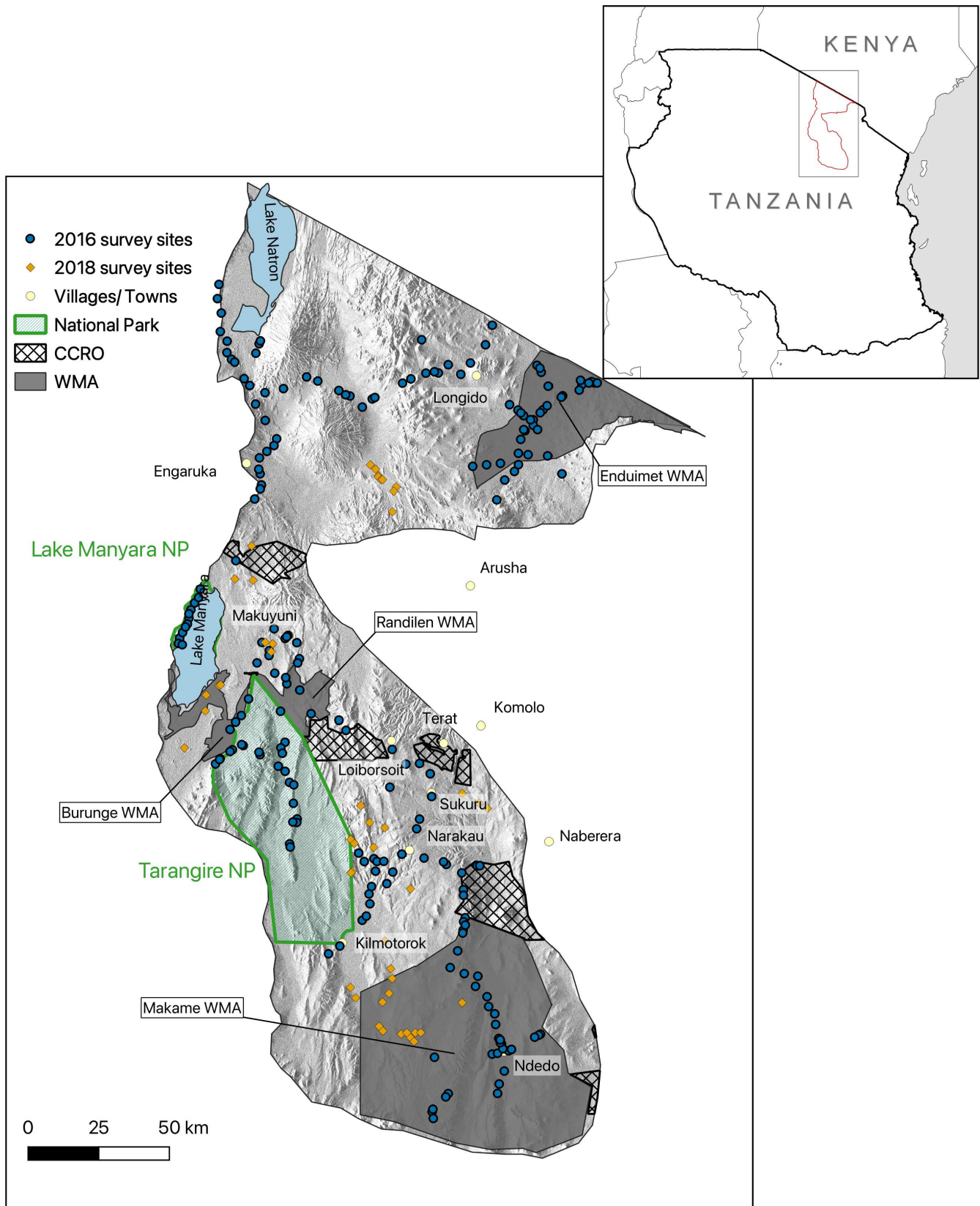


Figure 1. Location of the study area and sites for the baseline vegetation survey in April–May 2016 (blue circles) and April 2018 (orange diamonds). Background shading represents terrain elevation, derived from Shuttle Radar Topography Mission data⁴⁸. Areas not falling into the National Park (NP), Wildlife Management Area (WMA), or Certificate of Customary Right of Occupancy (CCRO) designation were included in the study under the ‘NONE’ category. The map was created using QGIS 3.14⁴⁹.

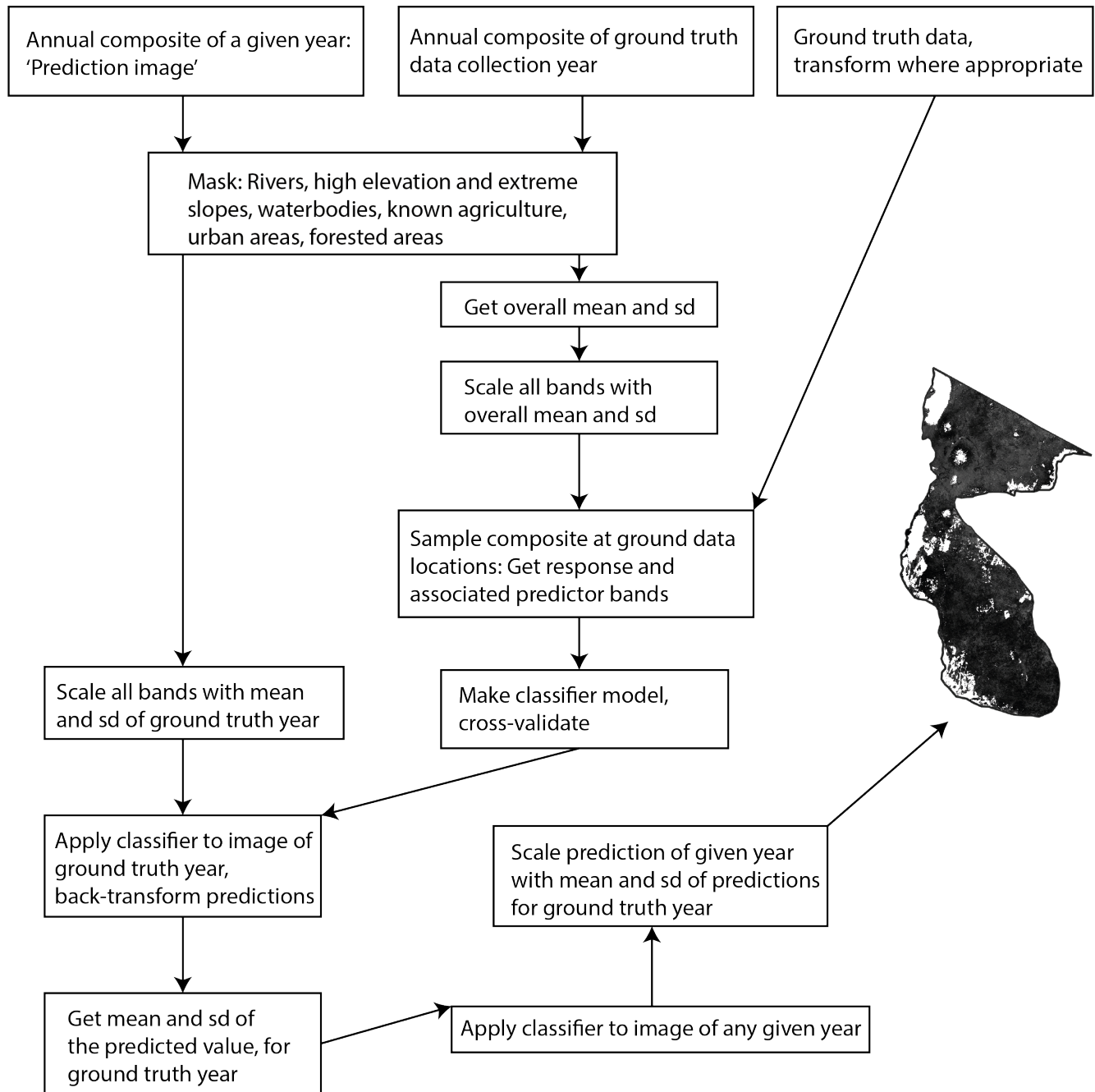


Figure 2. Conceptual overview of the steps involved in creating annual maps of predicted degradation scores for the study area. The map was created using R 3.2.2⁵⁶, and the flowchart was created using Adobe Illustrator Version 23.0.3⁶⁹.

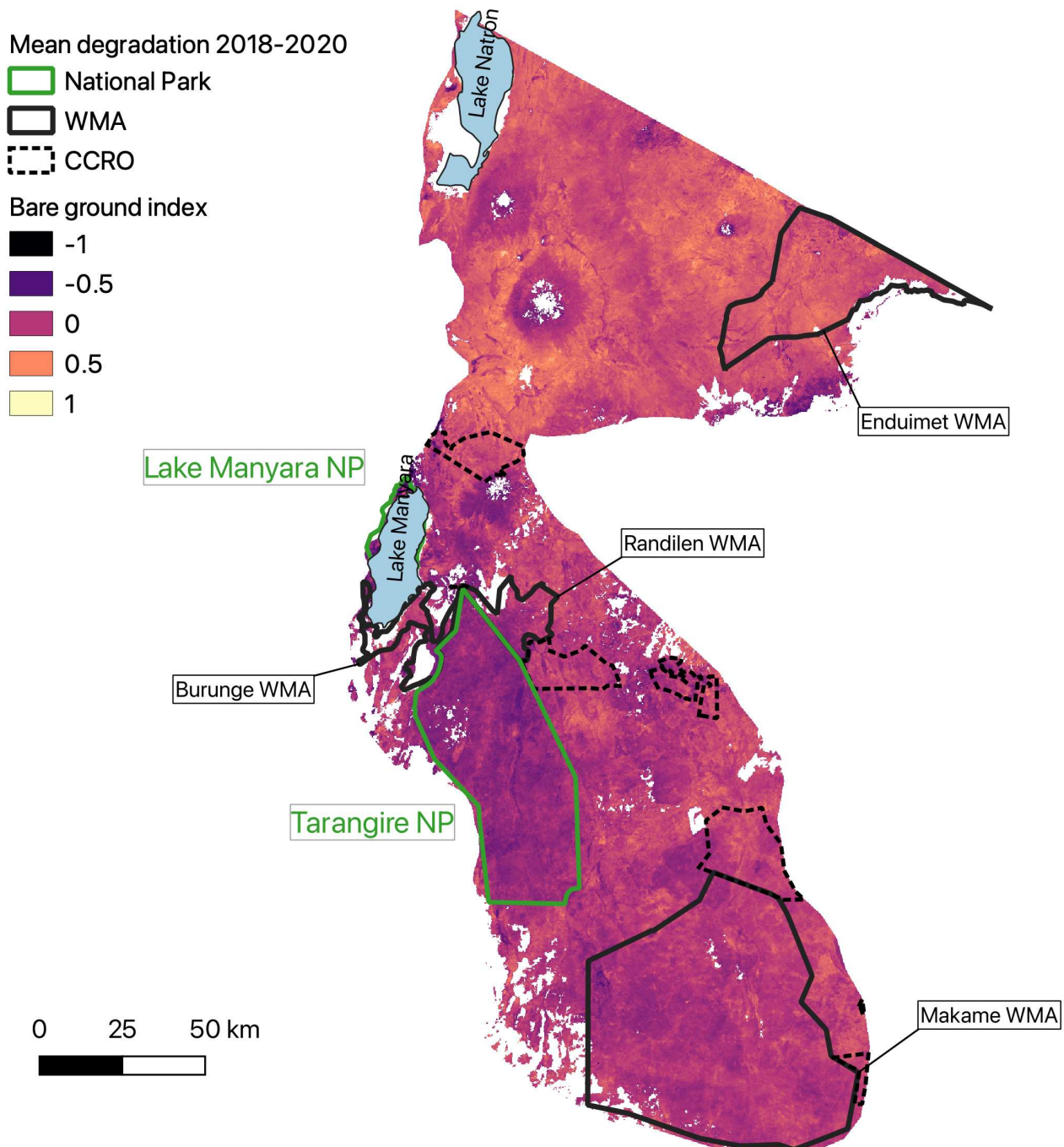


Figure 3. Map of normalized bare ground index scores in the study area, averaged for the years 2018–2020. Areas of high bare ground cover receive higher scores (max index = 1) and are coloured yellow, areas of low bare ground cover have lower scores (max index = -1) and are coloured purple. Gaps in the data (coloured white) are areas removed by the masking layer. The map was created using QGIS 3.14⁴⁹.

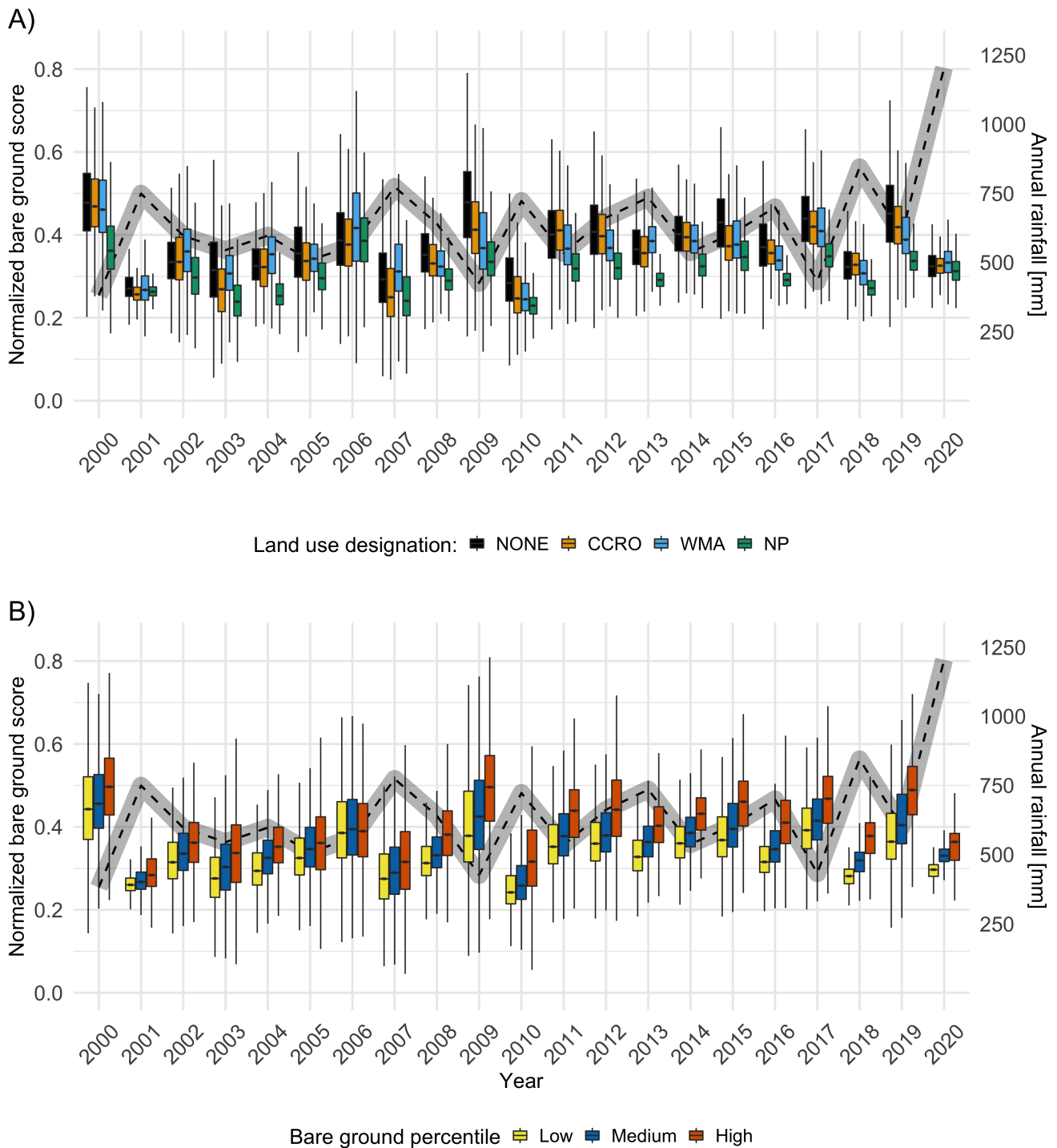


Figure 4. Normalized bare ground index scores over time – areas of high bare ground cover receive higher scores. A) Split by land use designation (black: No official management/protection scheme (NONE), orange: Certificate of Customary Right of Occupancy (CCRO), blue: Wildlife Management Area (WMA), cyan: National Park (NP)) and B) Split by bare ground percentile, based on the median degradation scores of the final three years of the time series (2018-2020). Whiskers represent 95% confidence intervals around the median. Outliers are not shown. The dashed gray line in the background indicates annual median rainfall (November to October), based on CHIRPS version 2⁽⁵⁴⁾ data retrieved for the study area.

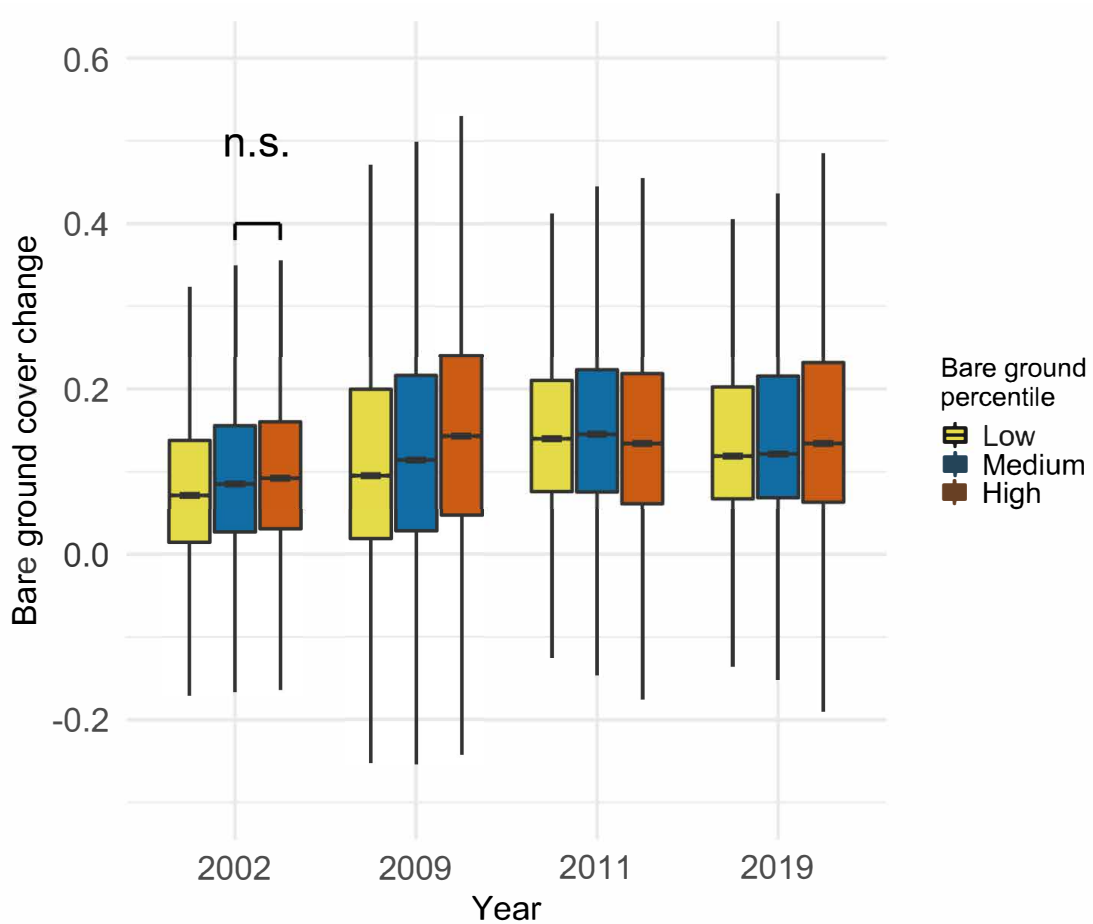
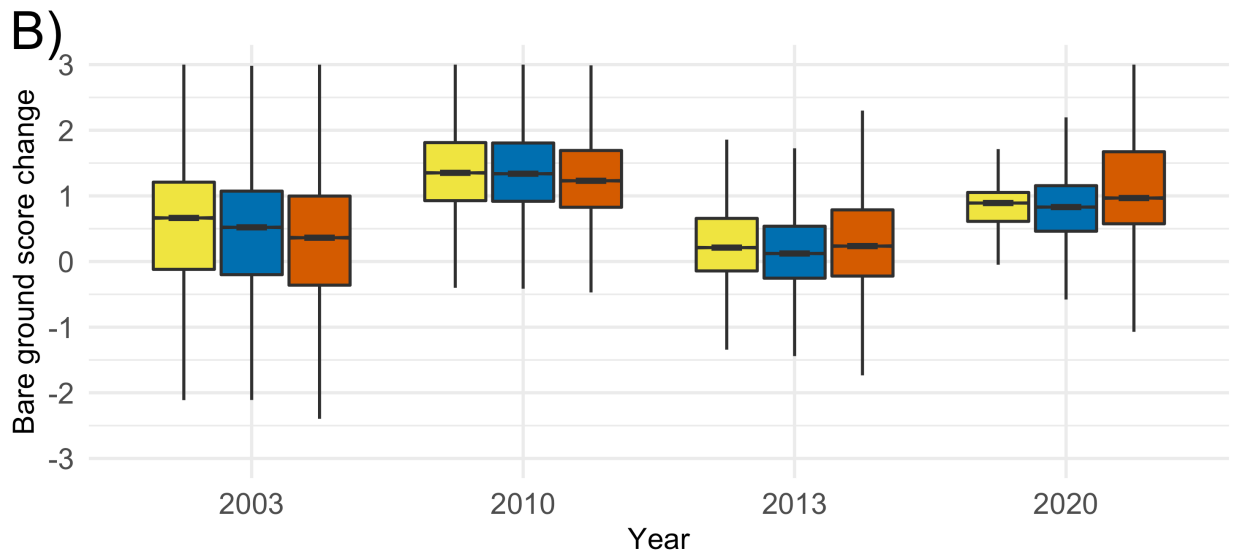
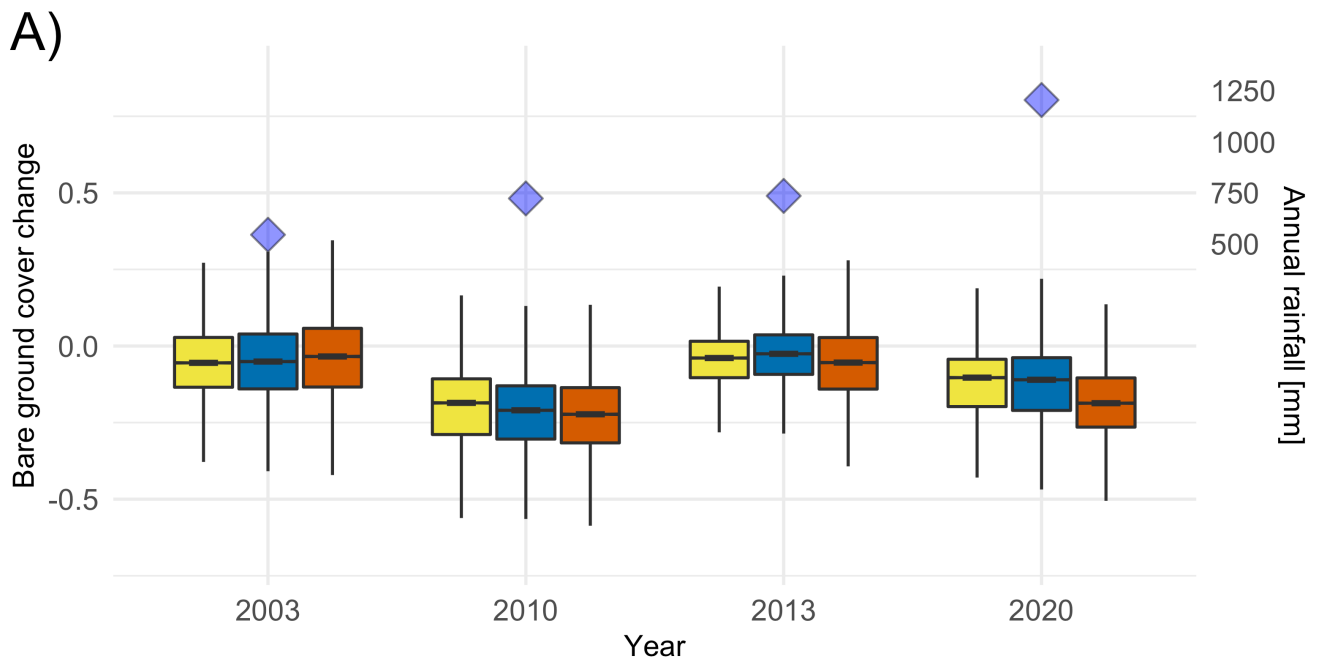


Figure 5. Changes in normalized bare ground index scores during the four years of greatest increase in bare ground cover, Split by bare ground percentile, based on the median degradation scores of the final three years of the time series (2018-2020). Positive numbers along the y axis signify an increase in bare ground cover, while negative numbers signify a decrease. Whiskers represent 95% confidence intervals around the median. Outliers are not shown. All contrasts were statistically different in the ANOVA tests, unless otherwise indicated. n.s.: not significant.



Bare ground percentile: ■ Low ■ Medium ■ High

Figure 6. Recovery in bare ground scores following the four years of largest degradation. Split by bare ground percentile,

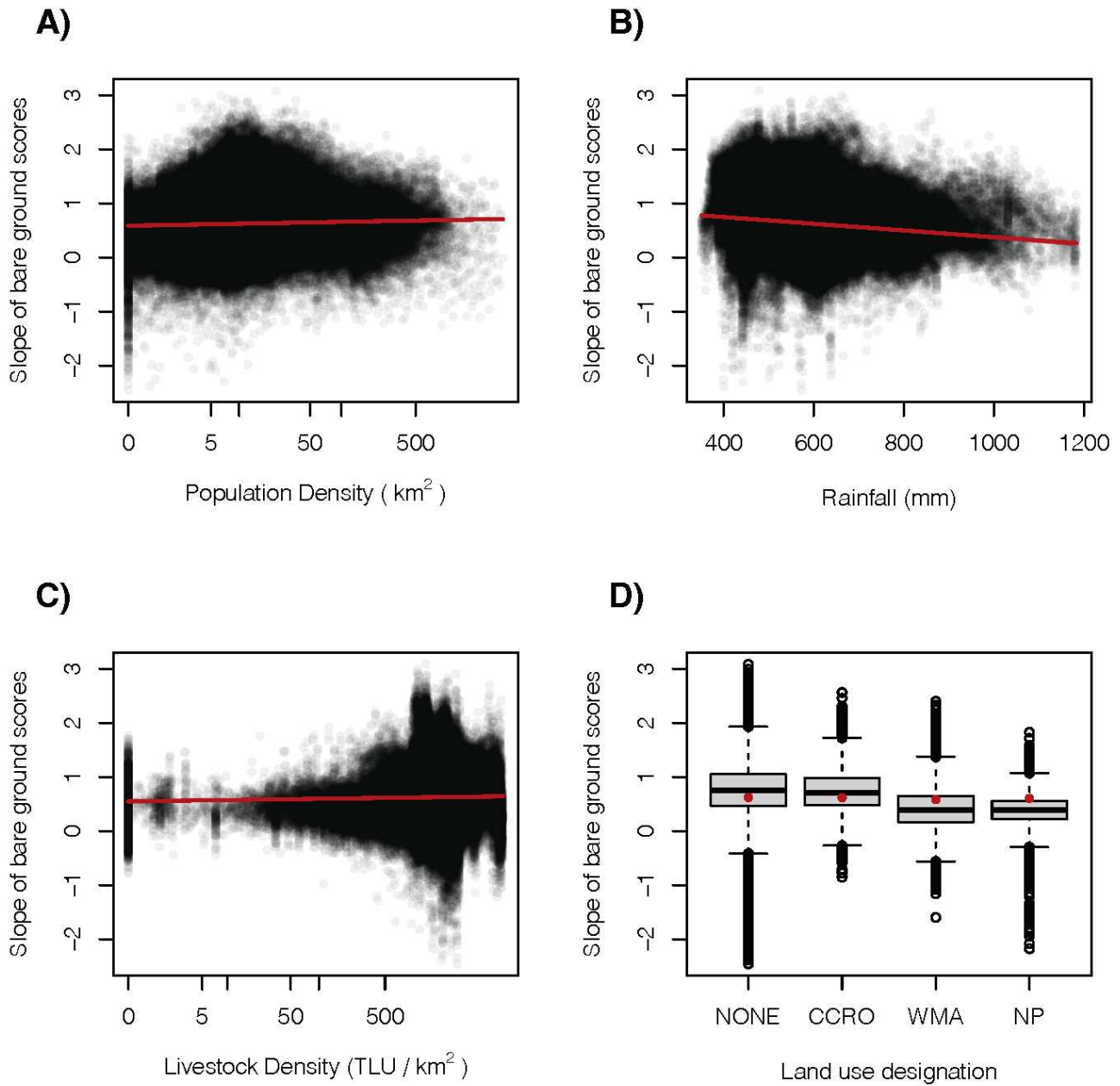


Figure 7. Effect plots showing the correlations between covariates and the rate of change in bare ground cover across the time period. A) Human population density, B) Mean annual rainfall, C) Livestock density and D) Land use designation.