



This is a repository copy of *Major histocompatibility complex I-induced endoplasmic reticulum stress mediates the secretion of pro-inflammatory muscle-derived cytokines.*

White Rose Research Online URL for this paper:  
<https://eprints.whiterose.ac.uk/id/eprint/193836/>

Version: Published Version

---

**Article:**

Thoma, A., Earl, K.E., Goljanek-Whysall, K. et al. (1 more author) (2022) Major histocompatibility complex I-induced endoplasmic reticulum stress mediates the secretion of pro-inflammatory muscle-derived cytokines. *Journal of Cellular and Molecular Medicine*, 26 (24). pp. 6032-6041. ISSN 1582-1838

<https://doi.org/10.1111/jcmm.17621>

---

**Reuse**

This article is distributed under the terms of the Creative Commons Attribution (CC BY) licence. This licence allows you to distribute, remix, tweak, and build upon the work, even commercially, as long as you credit the authors for the original work. More information and the full terms of the licence here:  
<https://creativecommons.org/licenses/>

**Takedown**

If you consider content in White Rose Research Online to be in breach of UK law, please notify us by emailing [eprints@whiterose.ac.uk](mailto:eprints@whiterose.ac.uk) including the URL of the record and the reason for the withdrawal request.



[eprints@whiterose.ac.uk](mailto:eprints@whiterose.ac.uk)  
<https://eprints.whiterose.ac.uk/>

# Major histocompatibility complex I-induced endoplasmic reticulum stress mediates the secretion of pro-inflammatory muscle-derived cytokines

Anastasia Thoma<sup>1,2</sup> | Kate E. Earl<sup>3</sup> | Katarzyna Goljanek-Whysall<sup>4,5</sup> | Adam P. Lightfoot<sup>6</sup> 

<sup>1</sup>Musculoskeletal Science & Sports Medicine Research Centre, Department of Life Sciences, Faculty of Science & Engineering, Manchester Metropolitan University, Manchester, UK

<sup>2</sup>Sheffield Institute for Translational Neuroscience, University of Sheffield, Sheffield, UK

<sup>3</sup>School of Life and Medical Sciences, University of Hertfordshire, Hertfordshire, UK

<sup>4</sup>Institute for Life Course and Medical Sciences, University of Liverpool, Liverpool, UK

<sup>5</sup>Discipline of Physiology, School of Medicine, National University of Ireland, Galway, Ireland

<sup>6</sup>School of Pharmacy and Biomolecular Sciences, Liverpool John Moores University, Liverpool, UK

## Correspondence

Adam P. Lightfoot, School of Pharmacy and Biomolecular Sciences, Liverpool John Moores University, UK.

Email: [a.p.lightfoot@ljmu.ac.uk](mailto:a.p.lightfoot@ljmu.ac.uk)

## Abstract

Major histocompatibility complex (MHC) I is an important component of intracellular antigen presentation. However, improper expression of MHC I upon the cell surface has been associated with several autoimmune diseases. Myositis is a rare acquired autoimmune disease which targets skeletal muscle, and MHC I overexpression on the surface of muscle fibres and immune cell infiltration are clinical hallmarks. MHC I overexpression may have an important pathogenic role, mediated by the activation of the endoplasmic reticulum (ER) stress response. Given the evidence that muscle is a diverse source of cytokines, we aimed to investigate whether MHC I overexpression can modify the profile of muscle-derived cytokines and what role the ER stress pathway may play. Using C2C12 myoblasts we overexpressed MHC I with a H-2k<sup>b</sup> vector in the presence or absence of salubrinal an ER stress pathway modifying compound. MHC I overexpression induced ER stress pathway activation and elevated cytokine gene expression. MHC I overexpression caused significant release of cytokines and chemokines, which was attenuated in the presence of salubrinal. Conditioned media from MHC I overexpressing cells induced in vitro T-cell chemotaxis, atrophy of healthy myotubes and modified mitochondrial function, features which were attenuated in the presence of salubrinal. Collectively, these data suggest that MHC I overexpression can induce pro-inflammatory cytokine/chemokine release from C2C12 myoblasts, a process which appears to be mediated in-part by the ER stress pathway.

## KEYWORDS

ER stress, major histocompatibility complex (MHC) I, myokines, skeletal muscle

## 1 | INTRODUCTION

The major histocompatibility complex (MHC) I is an integral component of antigen presentation processes and the immune response. Localized to the endoplasmic reticulum, MHC I plays a key role in the presentation of endogenous peptides upon the cell surface. Dysfunction in MHC I is a typical hallmark of several autoimmune

diseases, with improper expression and overexpression of MHC I upon several cell and tissue types. One such disorder is myositis, a group of rare autoimmune diseases, including Dermatomyositis (DM), polymyositis (PM) and inclusion body myositis (IBM) which primarily affects skeletal muscle and is associated with overexpression of MHC I on the surface of muscle fibres.<sup>1</sup> Patients with myositis typically present with symmetrical proximal muscle weakness

This is an open access article under the terms of the [Creative Commons Attribution](https://creativecommons.org/licenses/by/4.0/) License, which permits use, distribution and reproduction in any medium, provided the original work is properly cited.

© 2022 The Authors. *Journal of Cellular and Molecular Medicine* published by Foundation for Cellular and Molecular Medicine and John Wiley & Sons Ltd.

and infiltration of CD4<sup>+</sup> and CD8<sup>+</sup> T cells into per fascicular and endomysial regions around non-necrotic fibres.<sup>1</sup> The mechanisms underlying myositis remain poorly understood, though immune cell mediated and immune cell independent processes (e.g. ER stress) likely both play a role.<sup>2-4</sup> Overexpression of MHC I on and within muscle cells in myositis patients are associated with activation of the ER stress pathway within muscle cells, in both murine myositis models and in human disease.<sup>5</sup> Markers of ER stress pathway activation (e.g. Grp75 and Grp94) co-localize within muscle fibres staining positive for MHC I in myositis patient biopsies.<sup>6</sup> Moreover, activation of the ER stress response is known to activate inflammatory pathways, such as nuclear factor kappa B (NF- $\kappa$ B), a pleiotropic transcription factor capable of activating many downstream pathways to initiate and propagate inflammation.<sup>7</sup>

Skeletal muscle is increasingly recognized as an endocrine organ capable of secreting a diverse range of peptides and proteins, components of the secretome.<sup>8</sup> The issue of muscle-derived cytokine production and release has mostly been examined in the context of exercise.<sup>9</sup> Studies of diagnostic muscle biopsies from myositis patients have demonstrated elevated gene expression of several cytokines and chemokines including: CCL3, CCL4, CCL5, IL-6, IL-15 and CCL2.<sup>10,11</sup> Specifically, an early study by Sugiura et al. (2000) demonstrated increased CD40 expression on both skeletal muscle cells and infiltrating mononuclear cells in patients with PM and DM that led to the elevated IL-6, IL-8 and IL-15 production by the muscle cells.<sup>10</sup> Further to this study, it was found that IL-15 was highly expression on the cytoplasm of PM- and DM-derived myoblasts and only slightly expressed in infiltrating mononuclear cells or in healthy controls.<sup>12</sup> Muscle tissue homogenates from patients with DM also showed elevated IFN $\gamma$  and IL-4 levels, which seemed to be negatively correlated with muscle strength grades.<sup>13</sup> A recent study has also suggested growth differentiation factor-15 as a myositis biomarker, which has been observed to be strongly expressed in both myositis sera and muscle tissue, specifically co-localizing with protein aggregates in sporadic IBM (sIBM) samples.<sup>14</sup> Overall, there has been increased interest in better understanding the potential (patho-) physiological roles of muscle-derived cytokines (myokines) in the inflammatory myopathies.<sup>15</sup> However, the source of biopsy-localized cytokines remains poorly understood, where muscle and infiltrating immune cells will both likely harbour these factors.

Given the established involvement of MHC I upregulation in myositis and association with ER stress, the ER overload response (EOR) and nuclear factor kappa B (NF- $\kappa$ B) activation<sup>5</sup> we have used a cell model to determine whether MHC I overexpression can induce cytokine production and release from C2C12 myotubes, and whether compounds which affect the ER stress response, via translational attenuation (salubrinal) can augment these changes. Furthermore, we tested whether factors secreted from MHC I overexpressing cells can elicit changes in normal untreated C2C12 cells.

## 2 | METHODS

### 2.1 | Cell culture, treatment and transfection

C2C12 myoblasts<sup>16</sup> were grown in culture under standard conditions in Dulbecco's modified eagles' medium (DMEM) growth media supplemented with 10% foetal calf serum, 2 mM L-glutamine, then differentiated into mature myotubes over 7 days in media supplemented with 2% horse serum (HS).<sup>17</sup> To upregulate MHC I levels, myoblasts were transfected with 1 g of the MHC I (H2-k<sup>b</sup>) overexpression plasmid using Lipofectamine™ 2000 reagent for a period of 6 h (Invitrogen), both without and with the addition of the ER stress blocking agent, salubrinal (1 M), with a green fluorescent protein (GFP) plasmid used as an additional control, transfection efficiency was between 40% and 70% for each construct.<sup>18</sup> Cells and conditioned media were harvested 18h later in and stored at -80°C pending subsequent analyses. The plasmid used (MDH1-PGK-H2-Kb<sup>2</sup>) was a gift from Chang-Zheng Chen (Addgene plasmid #17852).<sup>19</sup> Pharmacological induction of ER stress in C2C12 myotubes was achieved by treating cells with Tunicamycin (0.1 g/ml) for 24 h.<sup>20</sup>

### 2.2 | Conditioned media experiments and microscopy

Normal C2C12 myotubes were grown in culture as previously described, and following which, were treated for 5 days with conditioned media harvested from C2C12 myotubes, transfected with H2-k<sup>b</sup>, GFP with or without the presence of salubrinal. After 5 days of treatment with conditioned media, cells were imaged to assess myotube morphology/diameter. Images were acquired using a Nikon Eclipse TE 2000 microscope (Nikon Instruments B.V), and analysed using ImageJ software. Following imaging, cells were harvested in ice-cold PBS and stored at -80°C for gene expression analyses by qPCR.

### 2.3 | RNA extraction, cDNA synthesis and qPCR

RNA was extracted from myotubes using the TRIzol method, purified using Genejet RNA kit (Thermo Fisher Scientific) and cDNA synthesized using the iScript first strand kit (Bio-Rad). Quantitative PCR was performed with SYBR green (Roche Diagnostics) and analysed by the 2<sup>- $\Delta\Delta$ C<sub>t</sub></sup> method, with ribosomal protein S29 used at the house-keeping gene.<sup>21</sup> The primer sequences used are detailed in (Table 1). The choice of the analysed ER stress pathway genes (i.e. PERK, IRE1 and ATF6) was made because these represent the three main branches of the ER stress pathway thus permitting analysis of the whole pathway.<sup>22</sup> In addition to examining Grp78, which has been previously examined in myositis.<sup>5,23</sup>

TABLE 1 Primer sequences for qPCR analyses

Gene	Forward	Reverse	Amplicon (bp)
Grp78	TTCAGCCAATTATCAGCAAACCTCT	TTTTCTGATGTATCCTCTTCACCAGT	73
IRE1	ACGAAGGCCTGACGAAACTT	ATCAGCAAAGGCCGATGACA	167
H2-k <sup>b</sup>	GCACAGATTCCCAAAGG	CAAGAGGCACCACCACAGAT	213
ATF6	GACTGGGAGTCGACGTTGTT	TGTCTGAGCAGAAGTGGCTG	175
PERK	GCGGCAGTGAGAAGTGAAT	TCCACCCGGTTAAAGGTGC	107
ATF4	GAAACCTCATGGGTTCTCCA	AGCTCATCTGGCATGGTTTC	201
IL-6	GCCTTCTTGGGACTGATGCT	TGCCATTGCACAACCTCTTTTC	181
CCL2	TGAATGTGAAGTTGACCCGT	TTAAGGCATCACAGTCCGAG	129
CCL4	GCAACACCATGAAGCTCTGC	CCATTGGTGCTGAGAACCCT	87
CCL5	GTGCCACGTC AAGGAGTAT	CCCCTTCTCTCTGGGTTG	111
TNF	ATGGCCTCCCTCTCATCAGT	CTTGGTGGTTTGTCTACGACG	105
CXCL1	CTTGAAGGTGTTGCCCTCAG	TCTCCGTTACTTGGGGACAC	151
RPS29	ATGGGTCACCAGCAGCTCTA	GTATTTGCGGATCAGACCGT	102

## 2.4 | Multiplex cytokine analysis

Conditioned media from transfected cells were analysed for cytokine content by multiplex bead analysis with antibodies specific to IL-6, CXCL1, TNF- $\alpha$ , CCL2, CCL4 and CCL5 using a Bioplex-200 platform in accordance with the manufacturers protocol (Bio-Rad). This choice of cytokine and chemokine targets was not designed to be comprehensive but based instead on the results from our previous work, which identified several specific cytokines/chemokines released from C2C12 myotubes.<sup>17</sup>

## 2.5 | Chemotaxis assay

The murine CD4<sup>+</sup> T lymphocyte cell line (BW5147.3) used in the chemotaxis assay studies was obtained from the American Tissue Culture Collection (ATCC), and cultured in suspension, in growth media comprising DMEM containing 10% HS, 2mM L-glutamine. The ability of conditioned media from H2-K<sup>b</sup> transfected cells ( $\pm$ salubrinal) to chemoattract murine CD4<sup>+</sup> T lymphocytes was assessed using a CytoSelect 96-well Cell Migration Assay, with a lymphocyte specific 5 M pore filter (Cell Biolabs Inc), in accordance with the manufacturers protocol.

## 2.6 | Mitochondrial function analyses

C2C12 cells were cultured and exposed to conditioned media as previously described, in 8-well Seahorse XFp plates. Real time oxygen consumption in cells was measured using a Seahorse XFp extracellular flux analyser, using the XFp mito stress test (Agilent Technologies, Manchester), performed in accordance with manufacturer's instructions.<sup>20</sup>

## 2.7 | Statistical analysis

Data are presented as mean  $\pm$  SEM; statistical analyses of data were undertaken using analysis of variance (ANOVA) with Tukey post hoc test and Kruskal-Wallis test, following Shapiro-Wilk assessment of normality, using GraphPad Prism 8.

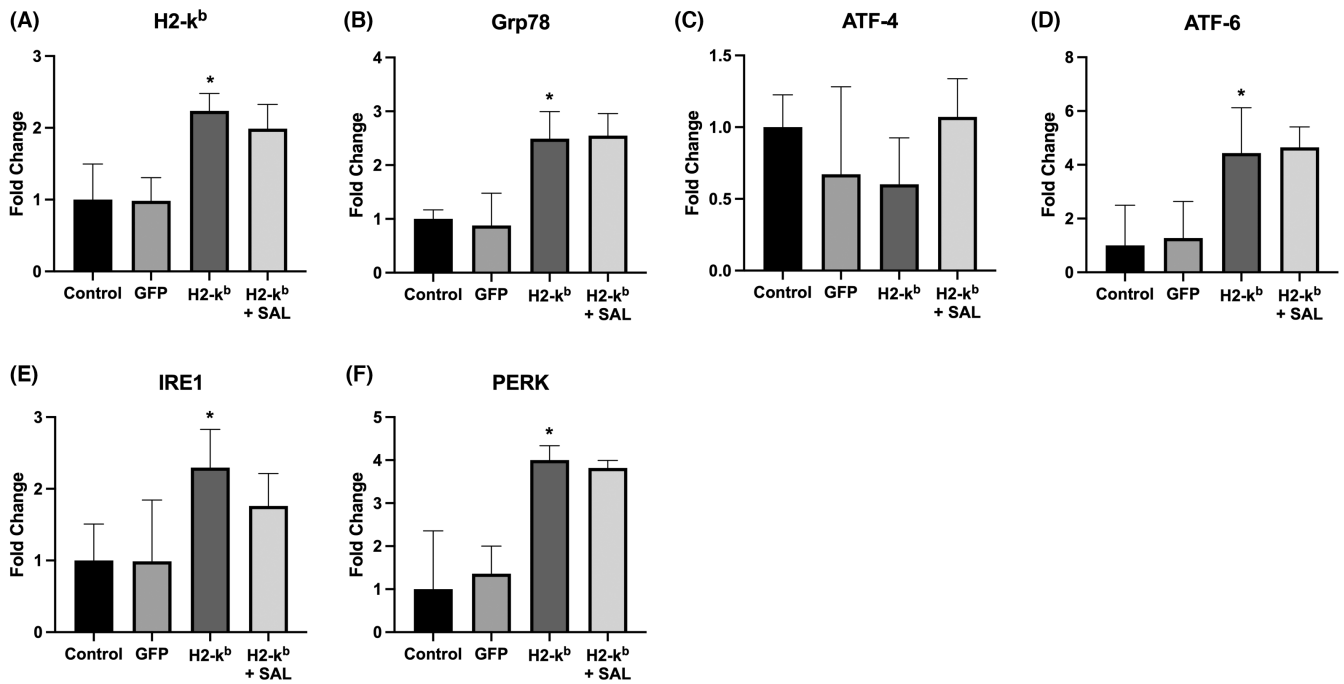
## 3 | RESULTS

### 3.1 | Overexpression of MHC I resulted in activation of the ER stress pathway

Transfection of myotubes with the MHC I (H2-k<sup>b</sup>) vector in the presence or absence of salubrinal resulted in significant increase in MHC I gene expression (Figure 1A). MHC I overexpression resulted in activation of several ER stress pathway components examined, that is *IRE1*, *PERK* and *ATF6*, as well as the chaperone *Grp78*, irrespective of the presence of salubrinal (Figure 1B–F). In contrast, no changes were seen in ATF-4 expression levels upon MHC I overexpression compared with vehicle control (Figure 1C).

### 3.2 | MHC I overexpression resulted in increased cytokine gene expression and ER stress-induced release of chemotactic myokines

The overexpression of MHC I in C2C12 myotubes resulted in significant increases in cytokine gene expression (Figure 2A) and cytokine release into the culture media, including of: IL-6, CXCL-1, CCL2, CCL4 and CCL5. Salubrinal treatment resulted in a reduced release of IL-6, CCL2, CCL4 and CCL5, but not of CXCL-1 (Figure 2B). In contrast, TNF- $\alpha$  mRNA gene expression was undetectable, and



**FIGURE 1** H2-k<sup>b</sup> (MHC I) (A), Grp78 (B), ATF-4 (C), ATF-6 (D), IRE1 (E), PERK (F), gene expression levels in C2C12 myotubes transfected with the GFP vector, H2-k<sup>b</sup> vector with or without the presence of salubrinal. Data are presented as mean  $\pm$  SEM ( $n = 3-6$ ), \* $p \leq 0.05$  compared with vehicle control (GFP).

cytokine release not increased in response to MHC I overexpression (Figure 2B). Conditioned media from MHC I overexpressing cells induced significant chemotaxis of CD4<sup>+</sup> T lymphocytes, an effect significantly reduced by salubrinal (Figure 3). Treatment of C2C12 myotubes with tunicamycin induced the upregulation in the gene expression (Figure 4A) and protein release of IL-6, CXCL1, CCL2 and CCL5 from normal C2C12 cells (Figure 4B).

### 3.3 | Conditioned media from MHC I overexpressing cells induced atrophy and mitochondrial dysfunction in untreated C2C12 cells

C2C12 cells incubated with conditioned media from MHC I overexpressing cells demonstrated a significant reduction in diameters (Figure 5E). The latter was clearly less marked in myotubes, which were incubated in conditioned media from cells overexpressing MHC I in the presence of salubrinal (Figure 5A–D). Conditioned media from MHC I overexpressing cells induced a significant up-regulation in the gene expression of two key genes which have been associated with muscle atrophy,<sup>24</sup> *Atrogin-1* and *MuRF-1* (Figure 5F,G). *MuRF-1* expression was reduced in cells treated with conditioned media from MHC I transfected cells in the presence of salubrinal. Conditioned media from MHC I overexpressing cells induced a decline in oxygen consumption (Figure 6A), specifically increased proton leak (Figure 6D) from mitochondria and significant reduction in non-mitochondrial respiration (Figure 6E). No change was observed in basal respiration (Figure 6B) or maximal respiration (Figure 6C) in response to treatment with conditioned media.

## 4 | DISCUSSION

The aim of this study was to investigate the impact of overexpressing MHC I in skeletal muscle cells on cytokine secretion and the potential role of ER stress modifying compound salubrinal. Further, to assess the impact of secreted factors on normal C2C12 cells.

Our findings provide insight into the impact of MHC I overexpression in skeletal muscle cells, suggesting that MHC I-induced ER stress may play a role in cytokine expression and release from C2C12 myotubes. The observation of increased Grp78 expression in MHC I overexpressing cells validates previous evidence suggesting that ER stress activation is downstream of MHC I upregulation and is somewhat analogous to observations seen in certain in vivo murine myositis models as well as human myositis.<sup>5</sup> The demonstrated increased expression of key ER stress pathway receptors (i.e. IRE1 and ATF6) following upregulation of MHC I is novel, and perhaps suggests broad activation of the pathway. Moreover, the pharmacological induction of ER stress, showed similar patterns of muscle-derived inflammatory cytokine expression and release to that of the MHC I overexpression.

Many cytokines have been detected in muscle tissue from myositis patients, and the current data suggest that muscle may also be a source of some of the chemokines and cytokines detectable in muscle biopsies from myositis patients.<sup>25-27</sup> The cytokines released by myotubes in our study do not reflect the full spectrum of cytokines detected in myositis patient muscle biopsies. Equally, infiltrating immune or vascular endothelial cells may also be significant sources for these and other cytokines detected in myositis patient biopsies.<sup>25,28</sup> TNF- $\alpha$  was not induced by MHC I overexpression in our

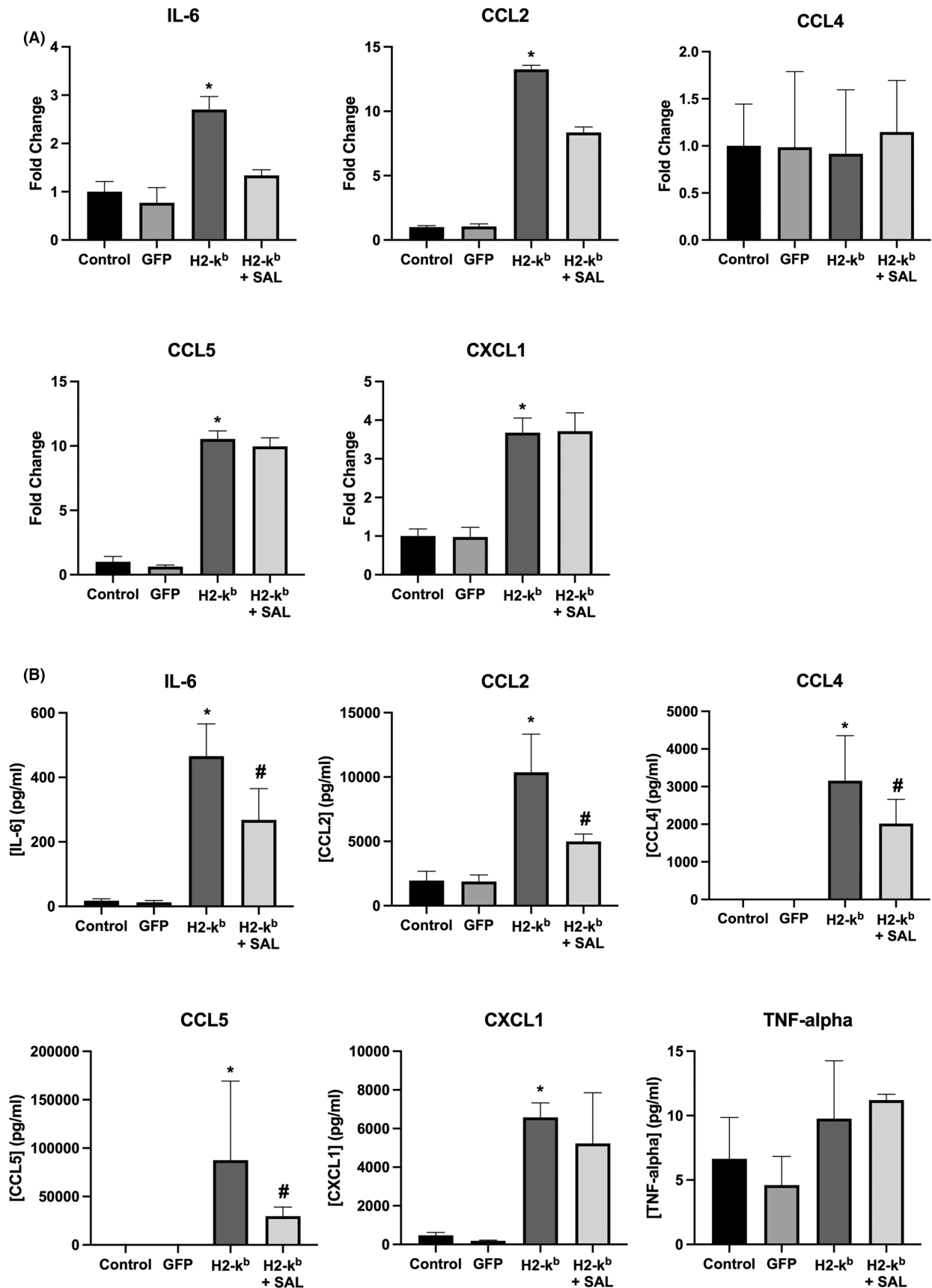
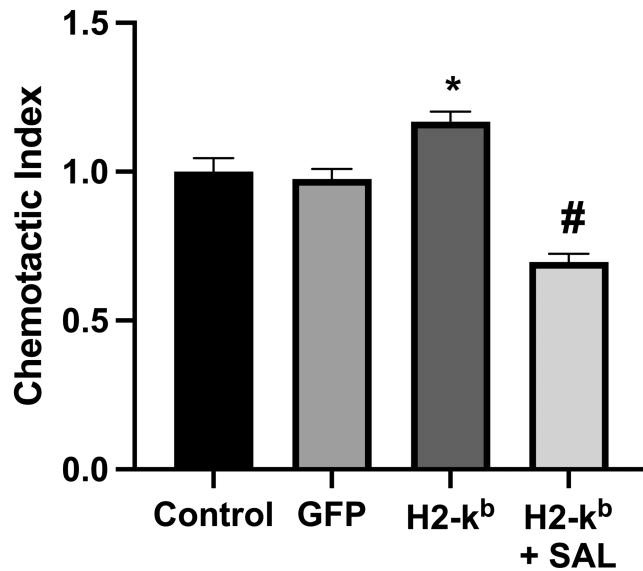


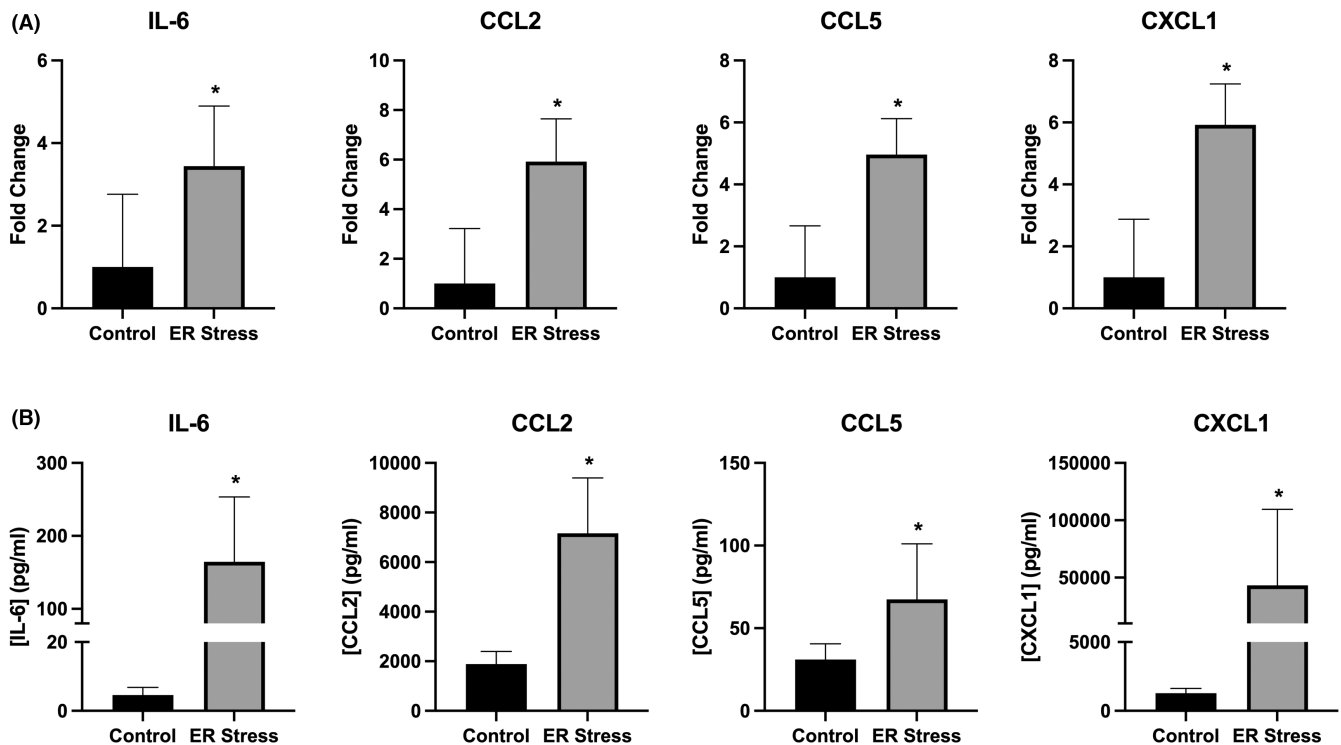
FIGURE 2 IL-6, CCL2, CCL4, CCL5, CXCL1 (A), gene expression levels and protein levels (B) released from C2C12 myotubes transfected with the GFP vector, H2-k<sup>b</sup> vector with or without the presence of salubriinal. Data are presented as mean  $\pm$  SEM ( $n = 3-6$ ), \* $p \leq 0.05$  compared with vehicle control (GFP) or H2-k<sup>b</sup> vector (#).



**FIGURE 3** T-cell chemotaxis in response to cell culture media taken from C2C12 myotubes transfected with the H2-k<sup>b</sup> vector with or without the presence of salubrin. Data are presented as mean ± SEM ( $n = 3-6$ ), \* $p < 0.05$  compared with vehicle control (GFP) or H2-k<sup>b</sup> vector (#).

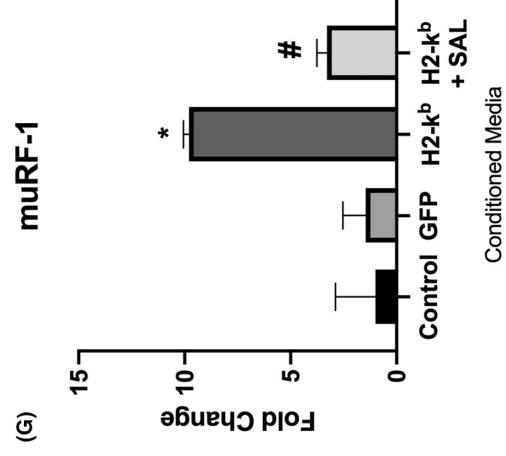
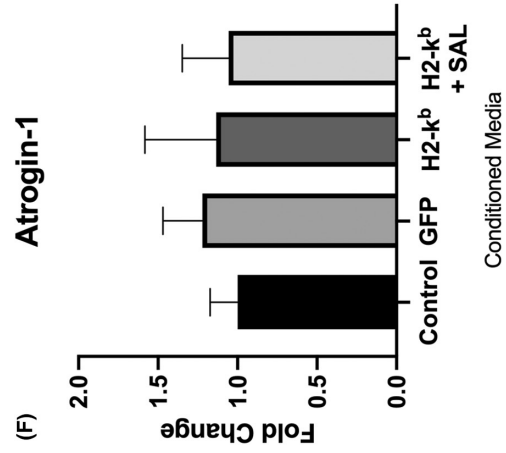
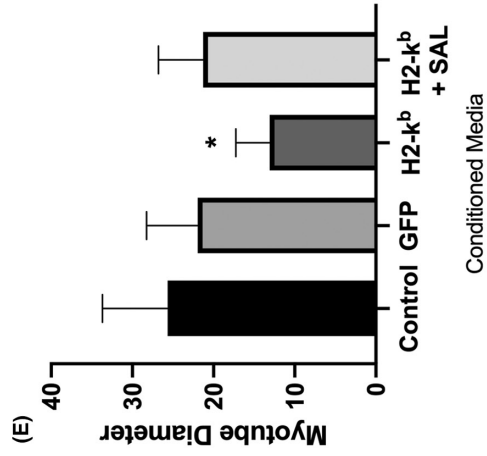
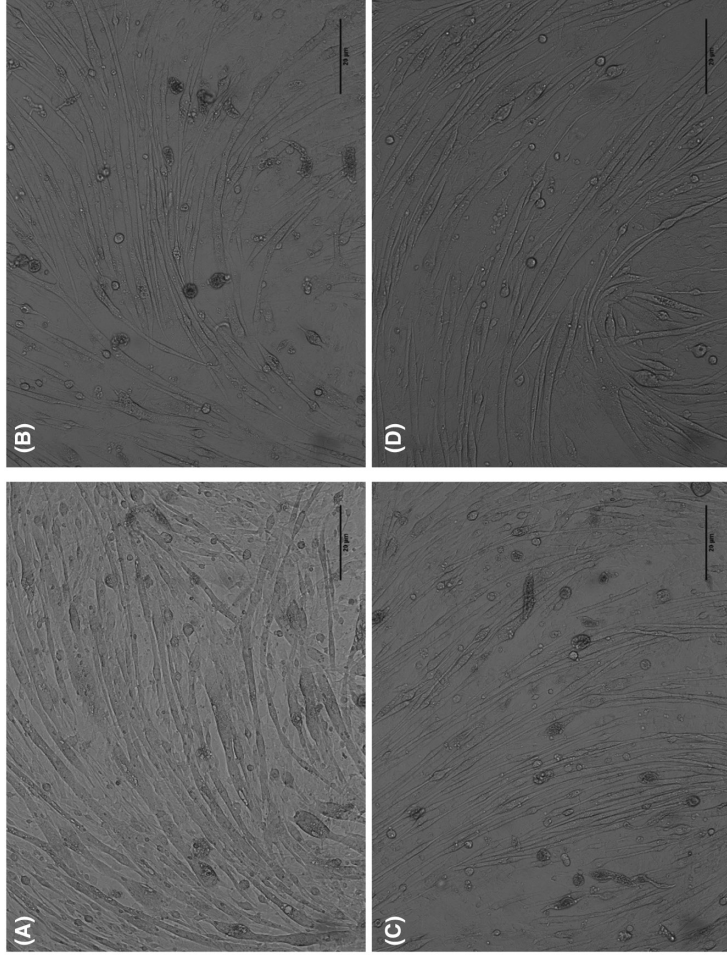
cell model, given that this cytokine has so frequently and specifically been implicated in contributing directly to muscle dysfunction in a considerably variety of systemic diseases.<sup>7</sup> TNF- $\alpha$  gene expression has, for instance, been detected in the sarcopenic skeletal muscle of older individuals, and co-localized to type I muscle fibres and in myositis patient biopsies.<sup>29-31</sup> However, there is little evidence to suggest that skeletal muscle secretes TNF- $\alpha$ , though transcript levels are detectable in some cellular models, albeit at very low levels.<sup>32</sup> The expression of both CXCL and CCL chemokines in our model is consistent with similar in vitro studies, following TNF- $\alpha$  stimulation.<sup>17</sup> CCL2 (MCP-1) has been reported to be associated with T-cells in non-necrotic muscle fibres of patients with PM and sIBM.<sup>33</sup> Moreover, the expression of CCL4 and CCL5, along with their requisite receptors has been reported in biopsies from patients with inflammatory myopathies.<sup>34</sup> The function of these potential myokines remains poorly understood.

The release of IL-6 downstream of MHC I is an interesting observation, there is a significant juxtaposition towards the function of IL-6 in muscle. Studies have reported IL-6 can induce muscle atrophy<sup>35</sup>; however, IL-6 has been shown to be protective in a murine model of myositis.<sup>36</sup> Despite these somewhat paradoxical observations, the

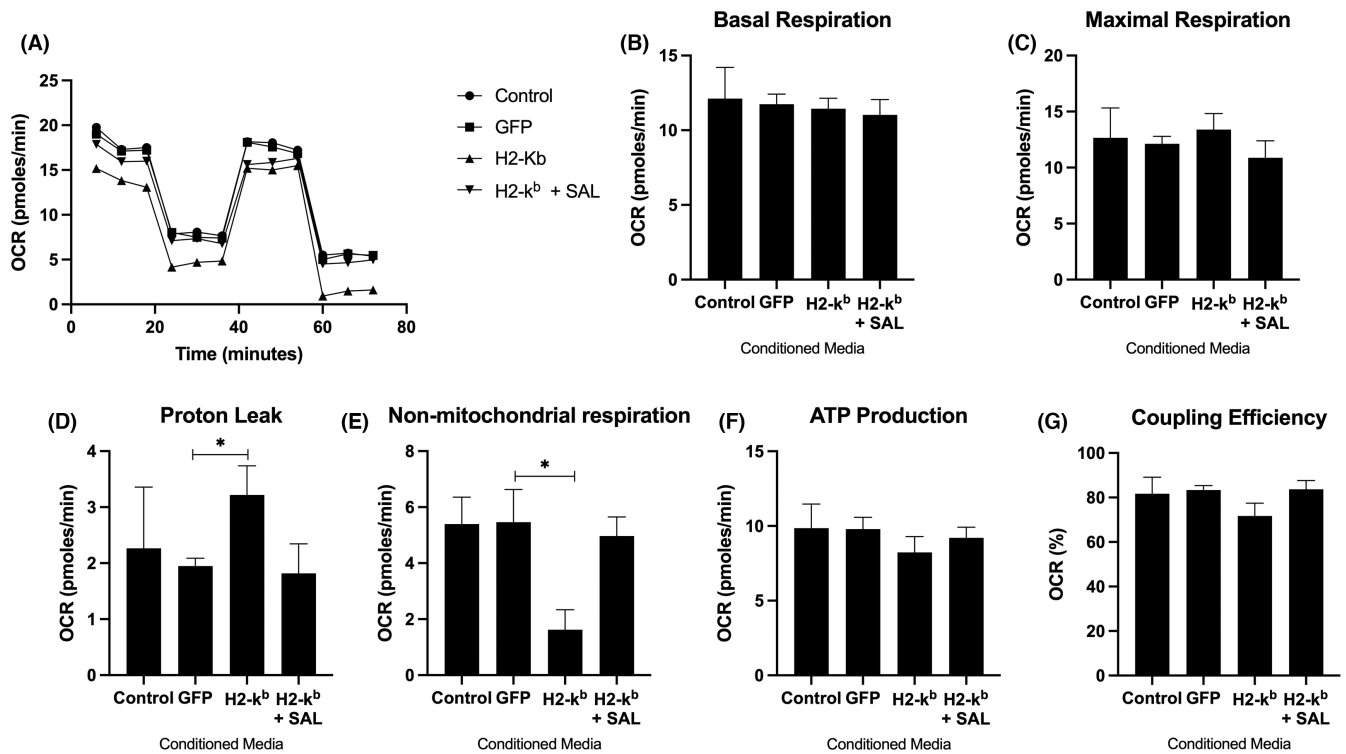


**FIGURE 4** Gene expression (A) and released protein levels (B) of IL-6, CXCL1, CCL2 and CCL5 from C2C12 myotubes treated with 0.1 g/ml of the ER stress-inducing compound tunicamycin for 24 h. Data are presented as mean ± SEM ( $n = 3-6$ ), \* $p < 0.05$ .

**FIGURE 5** Representative images ( $\times 10$  magnification) of normal C2C12 myotubes treated with conditioned media taken from control (A), GFP transfected (B), H2-k<sup>b</sup> transfected (C) and H2kb transfected with salubrin (1 mM) (D) C2C12 myotubes. Quantified myotube diameter (E) and gene expression levels of *Atrogin-1* (F) and *MuRF-1* (G) in normal C2C12 myotubes treated with conditioned media taken from C2C12 myotubes transfected with control, GFP, H2-k<sup>b</sup> or H2-k<sup>b</sup> with salubrin. Data are presented as mean ± SEM ( $n = 4$ ) \* $p < 0.05$  compared with vehicle control (GFP) or H2-k<sup>b</sup> vector (#).







**FIGURE 6** Mitochondrial function measures, showing overall oxygen consumption rate (A), basal respiration (B), maximal respiration (C), proton leak (D), non-mitochondrial respiration (E), ATP-linked respiration (F) and coupling efficiency (G) in normal C2C12 myotubes treated with conditioned media taken from C2C12 myoblasts transfected with control, GFP, H2-k<sup>b</sup> or H2-k<sup>b</sup> with salubrinal. Data are presented as mean  $\pm$  SEM ( $n = 4$ ) \* $p \leq 0.05$  compared with vehicle control (GFP).

pursuit of anti-IL-6 therapies in inflammatory myopathies (and wider autoimmune diseases) is highly prevalent.<sup>37,38</sup>

The suppressed cytokine release in the presence of salubrinal is likely a consequence of its role in translational attenuation, through preventing the de-phosphorylation of eIF2- $\alpha$ .<sup>18</sup> Studies in Parkinson's disease have reported similar attenuation of the circulating levels of cytokines IL-1b, IL-6 and TNF- $\alpha$  in LPS treated mice.<sup>39</sup> Our findings support the hypothesis that, in myositis, muscle-derived cytokines may play an important local influential role to effect neighbouring fibres, and in creating a milieu, which could contribute to disease pathogenesis.<sup>40</sup>

Given that myofiber atrophy and ER stress are the characteristic hallmarks of myositis,<sup>41</sup> our findings suggest that muscle-derived factors could play a pathogenic role in these processes. For instance, myokines released following upregulation of MHC I, could exert pro-atrophic effects in neighbouring muscle fibres. In our model, myotube atrophy was lessened in cells treated with conditioned media derived from MHC I overexpressing cells when these were treated with salubrinal. Surprisingly, *atrogen-1* gene expression levels remained elevated, despite incubation with conditioned media derived from MHC I overexpressing cells treated with salubrinal. This may be due to the fact that *MuRF-1* and *atrogen-1* have different regulators.

Mitochondrial dysfunction has been described in both experimental and human models of myositis; moreover, mitochondrial dysfunction has been associated with ER stress.<sup>42,43</sup> The mechanisms

responsible are overall poorly characterized, however, exogenous factors such as type I interferon have been heavily implicated.<sup>42</sup> Muscle precursor cells have been reported as a potential source of type I interferon in myositis.<sup>44</sup> Moreover, recent data has shown primary cells from myositis patients display an intrinsic deficit in mitochondrial function.<sup>45</sup> Our data showed a reduction in overall OCR and evidence of mitochondrial dysfunction through increased proton leak (a marker of mitochondrial damage) in cells treated with conditioned media from MHC I overexpressing cells, where media from salubrinal treated cells ameliorated these changes. Furthermore, the decline in non-mitochondrial respiration suggests perhaps a deficiency in broader metabolic processes. Collectively, our data suggest that secreted factors from disease phenotype cells may affect function in neighbouring cells/fibres through augmenting the local milieu and compound the intrinsic mitochondrial deficits that have previously been reported.<sup>45</sup>

The ER stress pathway is a cellular mechanism highly conserved across a wide range of eukaryotes.<sup>46</sup> Thus, although our experiments were performed in a murine cell line only, we anticipate the mechanisms reported here would be conserved across species. Previous studies in a murine model of antibody-induced inflammatory arthritis reported that reduction of ER stress by salubrinal decreased the levels of induced joint inflammation.<sup>47</sup>

There are clear limitations to this study, the applicability of these findings towards human disease remains unknown, the use

of a murine cell line is indeed a limiting factor—future studies on human cells are needed. Equally, the overexpression of MHC I is an artificial induction in our model, in human myositis, there a likely an array of driving factors, further the magnitude of MHC I overexpression in our model may not be truly reflective of the phenotype seen in patients. Furthermore, although the MHC I overexpression is a hallmark of myositis, MHC II expression has been evident, in PM, DM and proportionally more prevalent in IBM,<sup>48,49</sup> and therefore, the role of MHC II in myokine production is of great interest for further studying myositis (patho)-physiology. Even though our findings provide the foundation for the role of MHC I-mediated myokine release, further experiments on patient-derived cells are needed to contextualize these findings. We are mindful that MHC I expression is not wholly restricted to myositis and that analysis of biopsies from a range of muscular dystrophies, also report significant sarco-capillary expression of MHC I.<sup>50</sup>

### AUTHOR CONTRIBUTIONS

**Anastasia Thoma:** Conceptualization (equal); data curation (equal); formal analysis (equal); funding acquisition (supporting); investigation (equal); methodology (equal); project administration (supporting); software (equal); supervision (equal); validation (equal); visualization (equal); writing – original draft (lead); writing – review and editing (lead). **Kate E Earl:** Data curation (equal); formal analysis (equal); investigation (equal); methodology (equal); software (equal); validation (equal); visualization (equal); writing – original draft (equal); writing – review and editing (equal). **Katarzyna Goljanek-Whysall:** Conceptualization (equal); data curation (equal); formal analysis (equal); investigation (equal); methodology (equal); resources (equal); software (equal); supervision (equal); validation (equal); visualization (equal); writing – original draft (equal); writing – review and editing (equal). **Adam Paul Lightfoot:** Conceptualization (lead); data curation (equal); formal analysis (equal); funding acquisition (lead); investigation (equal); methodology (equal); project administration (lead); resources (equal); software (equal); supervision (lead); validation (equal); visualization (equal); writing – original draft (lead); writing – review and editing (equal).

### ACKNOWLEDGEMENTS

The authors are deeply grateful to Professor Robert G Cooper for his invaluable input into the design and development of this study.

### FUNDING INFORMATION

This study was funded by the University of Liverpool, Myositis UK and The Manchester Metropolitan University.

### CONFLICT OF INTEREST

The authors have no competing interests to declare.

### DATA AVAILABILITY STATEMENT

The data that support the findings of this study are available from the corresponding author upon reasonable request.

### ORCID

Adam P. Lightfoot  <https://orcid.org/0000-0003-1501-7879>

### REFERENCES

- Mastaglia FL, Phillips BA. Idiopathic inflammatory myopathies: epidemiology, classification, and diagnostic criteria. *Rheum Dis Clin*. 2002;28(4):723-741.
- Salomonsson S, Lundberg IE. Cytokines in idiopathic inflammatory myopathies. *Autoimmunity*. 2006;39(3):177-190.
- Lightfoot AP, Nagaraju K, McArdle A, Cooper RG. Understanding the origin of non-immune cell-mediated weakness in the idiopathic inflammatory myopathies—potential role of ER stress pathways. *Curr Opin Rheumatol*. 2015;27(6):580-585.
- Lightfoot AP, McArdle A, Jackson MJ, Cooper RG. In the idiopathic inflammatory myopathies (IIM), do reactive oxygen species (ROS) contribute to muscle weakness? *Ann Rheum Dis*. 2015;74(7):1340-1346.
- Nagaraju K, Casciola-Rosen L, Lundberg I, et al. Activation of the endoplasmic reticulum stress response in autoimmune myositis: potential role in muscle fiber damage and dysfunction. *Arthritis Rheum*. 2005;52(6):1824-1835.
- Coley W, Rayavarapu S, Pandey GS, et al. The molecular basis of skeletal muscle weakness in a mouse model of inflammatory myopathy. *Arthritis Rheum*. 2012;64(11):3750-3759.
- Thoma A, Lightfoot AP. NF- $\kappa$ B and inflammatory cytokine signalling: role in skeletal muscle atrophy. *Muscle Atrophy*. 2018;1088:267-279.
- Benatti FB, Pedersen BK. Exercise as an anti-inflammatory therapy for rheumatic diseases—myokine regulation. *Nat Rev Rheumatol*. 2015;11(2):86-97.
- Ost M, Coleman V, Kasch J, Klaus S. Regulation of myokine expression: role of exercise and cellular stress. *Free Radic Biol Med*. 2016;98:78-89.
- Sugiura T, Kawaguchi Y, Harigai M, et al. Increased CD40 expression on muscle cells of polymyositis and dermatomyositis: role of CD40-CD40 ligand interaction in IL-6, IL-8, IL-15, and monocyte chemoattractant protein-1 production. *J Immunol*. 2000;164(12):6593-6600.
- De Paepe B, Bracke KR, De Bleecker JL. An exploratory study of circulating cytokines and chemokines in patients with muscle disorders proposes CD40L and CCL5 represent general disease markers while CXCL10 differentiates between patients with an autoimmune myositis. *Cytokine X*. 2022;4(1):100063.
- Sugiura T, Harigai M, Kawaguchi Y, et al. Increased IL-15 production of muscle cells in polymyositis and dermatomyositis. *Int Immunol*. 2002;14(8):917-924.
- Giriş M, Durmuş H, Yetimler B, Taşlı H, Parman Y, Tüzün E. Elevated IL-4 and IFN- $\gamma$  levels in muscle tissue of patients with dermatomyositis. *in Vivo*. 2017;31(4):657-660.
- De Paepe B, Verhamme F, De Bleecker JL. The myokine GDF-15 is a potential biomarker for myositis and associates with the protein aggregates of sporadic inclusion body myositis. *Cytokine*. 2020;1(127):154966.
- Cerezo LA, Vencovský J, Šenolt L. Cytokines and inflammatory mediators as promising markers of polymyositis/dermatomyositis. *Curr Opin Rheumatol*. 2020;32(6):534-541.
- Yaffe D, Saxel OR. Serial passaging and differentiation of myogenic cells isolated from dystrophic mouse muscle. *Nature*. 1977;270(5639):725-727.
- Lightfoot AP, Sakellariou GK, Nye GA, et al. SS-31 attenuates TNF- $\alpha$  induced cytokine release from C2C12 myotubes. *Redox Biol*. 2015;6:253-259.
- Boyce M, Bryant KF, Jousse C, et al. A selective inhibitor of eIF2 $\alpha$  dephosphorylation protects cells from ER stress. *Science*. 2005;307(5711):935-939.

19. Li QJ, Chau J, Ebert PJ, et al. miR-181a is an intrinsic modulator of T cell sensitivity and selection. *Cell*. 2007;129(1):147-161.
20. Thoma A, Lyon M, Al-Shanti N, Nye GA, Cooper RG, Lightfoot AP. Eukarion-134 attenuates endoplasmic reticulum stress-induced mitochondrial dysfunction in human skeletal muscle cells. *Antioxidants*. 2020;9(8):710.
21. Livak KJ, Schmittgen TD. Analysis of relative gene expression data using real-time quantitative PCR and the 2<sup>-</sup>ΔΔCT method. *Methods*. 2001;25(4):402-408.
22. Walter P, Ron D. The unfolded protein response: from stress pathway to homeostatic regulation. *The Unfolded Protein Response: From Stress Pathway to Homeostatic Regulation Science*. 2011;334(6059):1081-1086.
23. Kim S, Joe Y, Kim HJ, et al. Endoplasmic reticulum stress-induced IRE1α activation mediates cross-talk of GSK-3β and XBP-1 to regulate inflammatory cytokine production. *J Immunol*. 2015;194(9):4498-4506.
24. Bodine SC, Baehr LM. Skeletal muscle atrophy and the E3 ubiquitin ligases MuRF1 and MAFbx/atrogen-1. *Am J Physiol Endocrinol Metab*. 2014;307(6):E469-E484.
25. Lundberg I, Ulfgren AK, Nyberg P, Andersson U, Klareskog L. Cytokine production in muscle tissue of patients with idiopathic inflammatory myopathies. *Arthritis Rheum*. 1997;40(5):865-874.
26. Tateyama M, Nagano I, Yoshioka M, Chida K, Nakamura S, Itoyama Y. Expression of tumor necrosis factor-α in muscles of polymyositis. *J Neurol Sci*. 1997;146(1):45-51.
27. Zong M, Loell I, Lindroos E, et al. Effects of immunosuppressive treatment on interleukin-15 and interleukin-15 receptor α expression in muscle tissue of patients with polymyositis or dermatomyositis. *Ann Rheum Dis*. 2012;71(6):1055-1063.
28. Lepidi H, Frances V, Figarella-Branger D, Bartoli C, Machado-Baeta A, Pellissier JF. Local expression of cytokines in idiopathic inflammatory myopathies. *Neuropathol Appl Neurobiol*. 1998;24(1):73-79.
29. Greiwe JS, Cheng BO, Rubin DC, Yarasheski KE, Semenkovich CF. Resistance exercise decreases skeletal muscle tumor necrosis factor α in frail elderly humans. *FASEB J*. 2001;15(2):475-482.
30. Plomgaard P, Penkowa M, Pedersen BK. Fiber type specific expression of TNF-α, IL-6 and IL-18 in human skeletal muscles. *Exerc Immunol Rev*. 2005;11(4):53-63.
31. Kuru S, Inukai A, Liang Y, Doyo M, Takano A, Sobue G. Tumor necrosis factor-α expression in muscles of polymyositis and dermatomyositis. *Acta Neuropathol*. 2000;99(5):585-588.
32. Bhatnagar S, Panguluri SK, Gupta SK, Dahiya S, Lundy RF, Kumar A. Tumor necrosis factor-α regulates distinct molecular pathways and gene networks in cultured skeletal muscle cells. *PLoS One*. 2010;5(10):e13262.
33. De Bleecker JL, De Paepe B, Vanwalleghem IE, Schröder JM. Differential expression of chemokines in inflammatory myopathies. *Neurology*. 2002;58(12):1779-1785.
34. Civatte M, Bartoli C, Schleinitz N, Chetaille B, Pellissier JF, Figarella-Branger D. Expression of the β chemokines CCL3, CCL4, CCL5 and their receptors in idiopathic inflammatory myopathies. *Neuropathol Appl Neurobiol*. 2005;31(1):70-79.
35. Haddad F, Zaldivar F, Cooper DM, Adams GR. IL-6-induced skeletal muscle atrophy. *J Appl Physiol*. 2005;98(3):911-917.
36. Zeng L, Maruyama S, Nakamura K, et al. The injury-induced myokine insulin-like 6 is protective in experimental autoimmune myositis. *Skelet Muscle*. 2014;4(1):1-4.
37. Zhang X, Zhou S, Wu C, et al. Tocilizumab for refractory rapidly progressive interstitial lung disease related to anti-MDA5-positive dermatomyositis. *Rheumatology*. 2021;60(7):e227-e228.
38. Su CF, Liao HT, Tsai CY. Tocilizumab and rituximab for anti-MDA-5 positive amyopathic dermatomyositis complicated with macrophage activation syndrome and progressive fibrosing interstitial lung disease. *Scand J Rheumatol*. 2022;51(2):166-168.
39. Cankara FN, Kuş MS, Günaydin C, et al. The beneficial effect of salubrinal on neuroinflammation and neuronal loss in intranigral LPS-induced hemi-Parkinson disease model in rats. *Immunopharmacol Immunotoxicol*. 2022;44(2):168-177.
40. Reed AM, Ernste F. The inflammatory milieu in idiopathic inflammatory myositis. *Curr Rheumatol Rep*. 2009;11(4):295-301.
41. Rayavarapu S, Coley W, Nagaraju K. An update on pathogenic mechanisms of inflammatory myopathies. *Curr Opin Rheumatol*. 2011;23(6):579-584.
42. Meyer A, Laverny G, Allenbach Y, et al. IFN-β-induced reactive oxygen species and mitochondrial damage contribute to muscle impairment and inflammation maintenance in dermatomyositis. *Acta Neuropathol*. 2017;134(4):655-666.
43. Askanas V, Engel WK, Nogalska A. Sporadic inclusion-body myositis: a degenerative muscle disease associated with aging, impaired muscle protein homeostasis and abnormal mitophagy. *Biochim Biophys Acta*. 2015;1852(4):633-643.
44. Tournadre A, Lenief V, Eljaafari A, Miossec P. Immature muscle precursors are a source of interferon-β in myositis: role of toll-like receptor 3 activation and contribution to HLA class I up-regulation. *Arthritis Rheum*. 2012;64(2):533-541.
45. Basualto-Alarcón C, Urrea FA, Bozán MF, et al. Idiopathic inflammatory myopathy human derived cells retain their ability to increase mitochondrial function. *PLoS One*. 2020;15(11):e0242443.
46. Hollien J. Evolution of the unfolded protein response. *Biochimica et Biophysica Acta (BBA)-molecular. Cell Res*. 2013;1833(11):2458-2463.
47. Hamamura K, Nishimura A, Chen A, Takigawa S, Sudo A, Yokota H. Salubrinal acts as a Dusp2 inhibitor and suppresses inflammation in anti-collagen antibody-induced arthritis. *Cell Signal*. 2015;27(4):828-835.
48. Rigolet M, Hou C, Amer YB, et al. Distinct interferon signatures stratify inflammatory and dysimmune myopathies. *RMD Open*. 2019;5(1):e000811.
49. Das L, Blumbergs PC, Manavis J, Limaye VS. Major histocompatibility complex class I and II expression in idiopathic inflammatory myopathy. *Appl Immunohistochem Mol Morphol*. 2013;21(6):539-542.
50. Kurdi M, Alshareef A, Bamaga AK, et al. The assessment of major histocompatibility complex (MHC) class-I expression in different neuromuscular diseases. *Degener Neurol Neuromuscul Dis*. 2021;11:61-68.

**How to cite this article:** Thoma A, Earl KE, Goljanek-Whysall K, Lightfoot AP. Major histocompatibility complex I-induced endoplasmic reticulum stress mediates the secretion of pro-inflammatory muscle-derived cytokines. *J Cell Mol Med*. 2022;00:1-10. doi:[10.1111/jcmm.17621](https://doi.org/10.1111/jcmm.17621)