



This is a repository copy of *Matrix metalloproteinase-induced cervical extracellular matrix remodelling in pregnancy and cervical cancer*.

White Rose Research Online URL for this paper:

<https://eprints.whiterose.ac.uk/191910/>

Version: Published Version

---

**Article:**

Amabebe, E. [orcid.org/0000-0002-3924-5270](https://orcid.org/0000-0002-3924-5270), Ogidi, H. and Anumba, D.O. [orcid.org/0000-0003-2502-3033](https://orcid.org/0000-0003-2502-3033) (2022) Matrix metalloproteinase-induced cervical extracellular matrix remodelling in pregnancy and cervical cancer. *Reproduction and Fertility*, 3 (3). R177-R191.

<https://doi.org/10.1530/raf-22-0015>

---

**Reuse**

This article is distributed under the terms of the Creative Commons Attribution-NonCommercial-NoDerivs (CC BY-NC-ND) licence. This licence only allows you to download this work and share it with others as long as you credit the authors, but you can't change the article in any way or use it commercially. More information and the full terms of the licence here: <https://creativecommons.org/licenses/>

**Takedown**

If you consider content in White Rose Research Online to be in breach of UK law, please notify us by emailing [eprints@whiterose.ac.uk](mailto:eprints@whiterose.ac.uk) including the URL of the record and the reason for the withdrawal request.



[eprints@whiterose.ac.uk](mailto:eprints@whiterose.ac.uk)  
<https://eprints.whiterose.ac.uk/>

REVIEW

# Matrix metalloproteinase-induced cervical extracellular matrix remodelling in pregnancy and cervical cancer

Emmanuel Amabebe<sup>1,\*</sup>, Henry Ogidi<sup>2,\*</sup> and Dilly O Anumba<sup>1</sup>

<sup>1</sup>Department of Oncology and Metabolism, University of Sheffield, Sheffield, UK

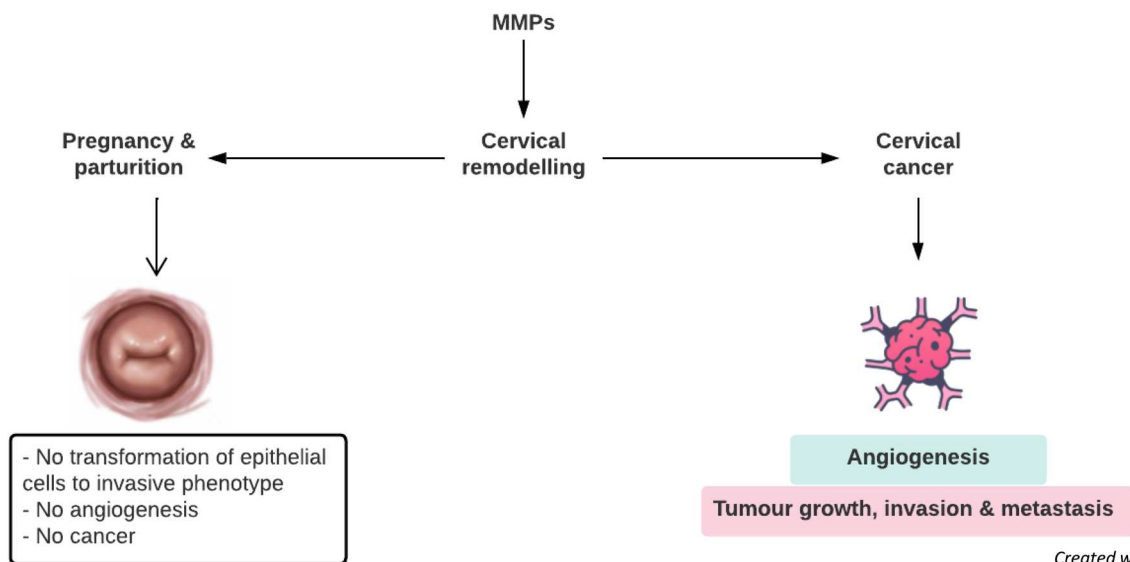
<sup>2</sup>Department of Obstetrics and Gynaecology, Glan Clwyd Hospital North Wales, Gwynedd, UK

Correspondence should be addressed to E Amabebe: [e.amabebe@sheffield.ac.uk](mailto:e.amabebe@sheffield.ac.uk)

\*(E Amabebe and H Ogidi contributed equally to this work)

## Graphical abstract

### MMP-induced ECM remodelling in pregnancy and cervical cancer



Created with Lucidchart

- Matrix metalloproteinases (MMPs) are pivotal to the complex extracellular matrix (ECM) modulation, which contribute to cervical remodelling during pregnancy and puerperium.
- However, in cancer of the uterine cervix, this ECM modulation is altered leading to disrupted cell-cell and cell-basement membrane adhesion, abnormal tissue growth, neovascularization and metastasis that disrupt homeostasis.
- Cervical ECM remodelling during pregnancy and puerperium could be a physiological albeit benign neoplasm.

## Abstract

The phenomenal extracellular matrix (ECM) remodelling of the cervix that precedes the myometrial contraction of labour at term or preterm appears to share some common mechanisms with the occurrence, growth, invasion and metastasis of cervical carcinoma. Matrix metalloproteinases (MMPs) are zinc-dependent endopeptidases that are pivotal to the complex extracellular tissue modulation that includes degradation, remodelling and exchange of ECM components, which contribute to homeostasis under normal physiological conditions such as cervical remodelling during pregnancy and puerperium. However, in cancer such as that of the uterine cervix, this extensive network of extracellular tissue modulation is altered leading to disrupted cell–cell and cell–basement membrane adhesion, abnormal tissue growth, neovascularization and metastasis that disrupt homeostasis. Cervical ECM remodelling during pregnancy and puerperium could be a physiological albeit benign neoplasm. In this review, we examined the pathophysiological differences and similarities in the role of MMPs in cervical remodelling and cervical carcinoma.

## Lay summary

During pregnancy and childbirth, the cervix, which is the barrel-shaped lower portion of the womb that connects to the vagina, gradually softens, shortens and opens to allow birth of the baby. This process requires structural and biochemical changes in the cervix that are stimulated by enzymes known as matrix metalloproteinases. Interestingly, these enzymes also affect the structural and biochemical framework of the cervix during cervical cancer, although cervical cancers usually occur after infection by human papillomavirus. This review is intended to identify and explain the similarities and differences between the structural and chemical changes in the cervix during pregnancy and childbirth and the changes seen in cervical cancer.

**Keywords:** ▶ cervical remodelling ▶ cervical carcinoma ▶ matrix metalloproteinase ▶ preterm birth ▶ extracellular matrix ▶ tissue inhibitors of metalloproteinases

*Reproduction and Fertility* (2022) 3 R177–R191

## Introduction

During normal pregnancy and childbirth, the extracellular matrix (ECM) of the uterine cervix undergoes several histological, catabolic and biomechanical changes collectively termed cervical remodelling. This physiological process involves controlled degradation and remodelling (disorganization) of the ECM collagen framework by matrix metalloproteinases (MMPs) to facilitate cellular proliferation and invasion (Geng *et al.* 2016). Cervical remodelling is crucial for successful pregnancy and delivery both at term or preterm. During pregnancy, the collagenous ECM of fetal membranes and cervix undergo continuous remodelling induced by MMPs in order to adapt to the growing fetus and uterus.

MMPs (matrixins) are zinc-dependent proteolytic enzymes (endopeptidases) that are either constitutively expressed during gestation (e.g. MMP-1, MMP-2 and MMP-3) or induced by active labour (e.g. MMP-9) (Reunanen & Kähäri 2000–2013, Tency *et al.* 2012). The remodelling action of MMPs is balanced by their inhibitors, that is, tissue inhibitors of metalloproteinases (TIMPs, e.g. TIMP-1,

TIMP-2, TIMP-3 and TIMP-4) (Arpino *et al.* 2015), which are expressed in fetal membranes, decidua and placenta (Tency *et al.* 2012, Sundrani *et al.* 2017). Successful pregnancy also requires a balanced expression of both MMPs and TIMPs (Heng *et al.* 2012).

There are about 23 MMPs in humans classified based on their amino acid sequences and substrate specificities (Ye 2015). They include collagenases (MMP-1, -8 and -13), gelatinases (MMP-2 and -9), matrilysins (MMP-7 and -26), stromelysins (MMP-3 and -10), MMPs stromelysin-3 type (MMP-11, -19, -21, and -28), membrane-type MMPs (MMP-14, -15, -16, -17, -23, -24 and -25) and others, for example, MMP-12, -20 (enamelysin) and -27 (Zhang & Nothnick 2005, Nagase *et al.* 2006, Ye 2015, Quintero-Fabián *et al.* 2019).

The two main inhibitors of MMPs are TIMPs and serum-borne inhibitor (e.g. alpha 2-macroglobulin). TIMP is the main inhibitor of distinct MMPs produced locally (Gomez *et al.* 1997). Four identical TIMPs have been described (TIMP 1–4). TIMP-1 selectively binds to MMP-1, -2, -3

and -9 (Zhang & Nothnick 2005). TIMP-2 inhibits MMP-2 (Howard *et al.* 1991), while TIMP-3, which is exclusively found in the ECM, has strong affinity for MMP-9 compared to other MMPs (Geng *et al.* 2016). TIMP-1 and TIMP-2 inhibit the activities of all known MMPs; hence, they are crucial in maintaining the balance between ECM deposition and degradation in several physiological processes (Gomez *et al.* 1997). TIMP-4 may have no significant preferential inhibitory action against MMPs (Curry & Osteen 2003), but it is involved in ECM homeostasis in a tissue-specific manner (Gomez *et al.* 1997).

An imbalance in the MMPs:TIMPs ratio, such as an increase in MMPs over TIMPs, results in aberrant ECM degradation and preterm rupture of membranes and preterm birth (PTB) (Athayde *et al.* 1999, Sundrani *et al.* 2017). Intrauterine (intraamniotic) infection, often ascending from the vagina through the cervix, is a major inducer of MMP production by immune cells and causes spontaneous PTB (sPTB) (Maymon *et al.* 2000b, 2001, Park *et al.* 2003, Becher *et al.* 2010). Consequently, MMPs and TIMPs have been employed as markers of PTB (Tency *et al.* 2012).

Similarly, MMPs perform critical roles in malignant tumour growth and cancer cell survival, for example, cervical carcinoma cells may utilize stromal MMPs to develop an invasive phenotype (Reunanen & Kähäri 2000–2013, Fullár *et al.* 2015). MMPs are not only implicated in the physiological process of cervical remodelling during gestation but are also involved in malignant tumour growth, invasion and metastasis (Kugler 1999, Gonzalez *et al.* 2013, Geng *et al.* 2016). A distorted MMP:TIMP ratio has been implicated in various human disease conditions including cancers, endometriosis, osteoarthritis, rheumatoid arthritis, amyotrophic lateral sclerosis, systemic sclerosis, sepsis, vasculopathies, preeclampsia, spontaneous and recurrent pregnancy loss, diabetes, chronic obstructive pulmonary disease, acute respiratory distress syndrome, glaucoma, HIV-1-associated neurocognitive disorders, periodontitis, etc. (Tayebjee *et al.* 2005, Amălinei *et al.* 2007, Montagnana *et al.* 2007, Rysz *et al.* 2007, Kubota *et al.* 2008, Raffetto & Khalil 2008, Anumba *et al.* 2010, Brew & Nagase 2010, Niebroj-Dobosz *et al.* 2010, Stojanovic *et al.* 2010, Mühl *et al.* 2011, Navratilova *et al.* 2012, Nissi *et al.* 2013, Nga *et al.* 2014, Xing *et al.* 2017).

Due to the pleiotropic effect of MMPs, it can be hypothesized that cervical remodelling may be akin to a physiological albeit benign neoplastic process. Furthermore, the physiological limit of MMP expression and/or other possible regulatory mechanisms that induce degradation of the ECM of the cervix, cell growth

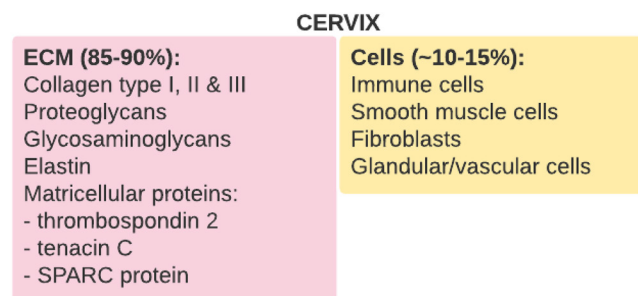
and invasion without stimulating overt malignant transformation of the cervical tissue during gestation is yet to be elucidated. Therefore, this review seeks to examine the pathophysiologic differences in the role of MMPs in cervical remodelling and carcinoma. The similarities and differences between MMP-induced cervical ECM remodelling in pregnancy and childbirth vs cervical carcinoma were highlighted.

### Cervical architecture and remodelling during gestation

The normal human cervical tissue is the barrel-shaped lower portion of the uterus. It has a central (cervical) canal that connects the uterine cavity at the internal os and vaginal lumen at the external os (Vink & Mourad 2017). Although its shape depends on the age, parity and menstrual status of the woman, it measures 3–4 cm in length and 2.5 cm in diameter (Vink & Mourad 2017).

The cervix comprises an epithelium and a stromal region (Yoshida *et al.* 2019). The stromal region is predominately a homogenous, hydrated collagenous structure containing relatively fewer cells. The ECM constitutes 85–90% of the cervix and contains collagen fibrils (types I and III), proteoglycans, glycosaminoglycans (hyaluronan), elastin and matricellular proteins (thrombospondin 2, tenascin C, and secreted protein acidic and rich in cysteine protein), while immune cells, smooth muscle cells, fibroblasts and glandular/vascular cells make up ~10–15% (Fig. 1).

The mechanical (tensile) strength of the cervix is attributed to the fibrillar collagen orientation and degree of cross-links in the ECM, which is secreted by fibroblast and epithelial cells within the tissue (Danforth *et al.* 1974, Akins *et al.* 2011, Vink & Mourad 2017). The other components of the ECM also influence its global tensile



**Figure 1** Composition of the uterine cervical stroma. Glycosaminoglycans (e.g. hyaluronan). ECM, extracellular matrix; SPARC protein, secreted protein acidic and rich in cysteine (basement-membrane protein 40 or osteonectin).

strength. The proteoglycans organize collagen fibrils, while hyaluronan enhances tissue hydration and redistribution of collagen fibres. Hyaluronan also impairs the interaction of fibronectin and collagen (Word *et al.* 2007) and promotes cervical ripening by stimulating macrophages, which produce cytokines that attract other inflammatory cells into the cervical stroma (Word *et al.* 2007, House *et al.* 2009). The matricellular proteins regulate matrix formation and cell–matrix interactions and undergo increased turnover during remodelling (Danforth *et al.* 1974, Leppert 1995, Akins *et al.* 2011, Vink & Mourad 2017).

The normal cervical tissue structure also comprises an endocervix and ectocervix. The endocervical canal is lined by a mucus-secreting simple columnar epithelium, which forms numerous tubular mucous glands. The vaginal portion of the cervix (ectocervix) is lined by non-keratinized stratified squamous epithelium. The junction between the endo- and ectocervical cells is the squamocolumnar junction. Both the endo- and ectocervical cells confer some degree of protection against ascending vaginal infection (Vink & Mourad 2017).

Blood is supplied to the cervix via the descending branch of the uterine artery and drained via the uterine vein. Oxygen, hormones, immune cells, cytokines/chemokines, etc. reach the cervix via the blood supply. Like other pelvic organs, it is innervated mainly by autonomic nerves from the inferior hypogastric plexus (pelvic plexus) that is a combination of hypogastric (sympathetic, T10–L2) and pelvic splanchnic (parasympathetic, S2–S4) nerves. Painful stimuli is transmitted via afferent sensory nerve fibres through the pelvic splanchnic nerves to the S2–S4 sacral nerves (Vink & Mourad 2017).

### Cervical remodelling

Parturition in mammals involves transformation of the myometrium from a quiescent to a contractile state. The cervix also remodels from a closed rigid structure to a distensible and elastic ring that opens sufficiently to allow the delivery of the fetus (Timmons *et al.* 2010, Gonzalez *et al.* 2013). Cervical remodelling is essential for safe birth. It is a nonlinear, time-dependent and anisotropic process determined by structural changes in the ECM (Myers *et al.* 2008).

Because it is quite challenging to obtain whole cervical tissue or biopsies during pregnancy in humans, most of the understanding of the molecular mechanisms and biochemical changes associated with cervical remodelling emanate from rodent studies (Timmons

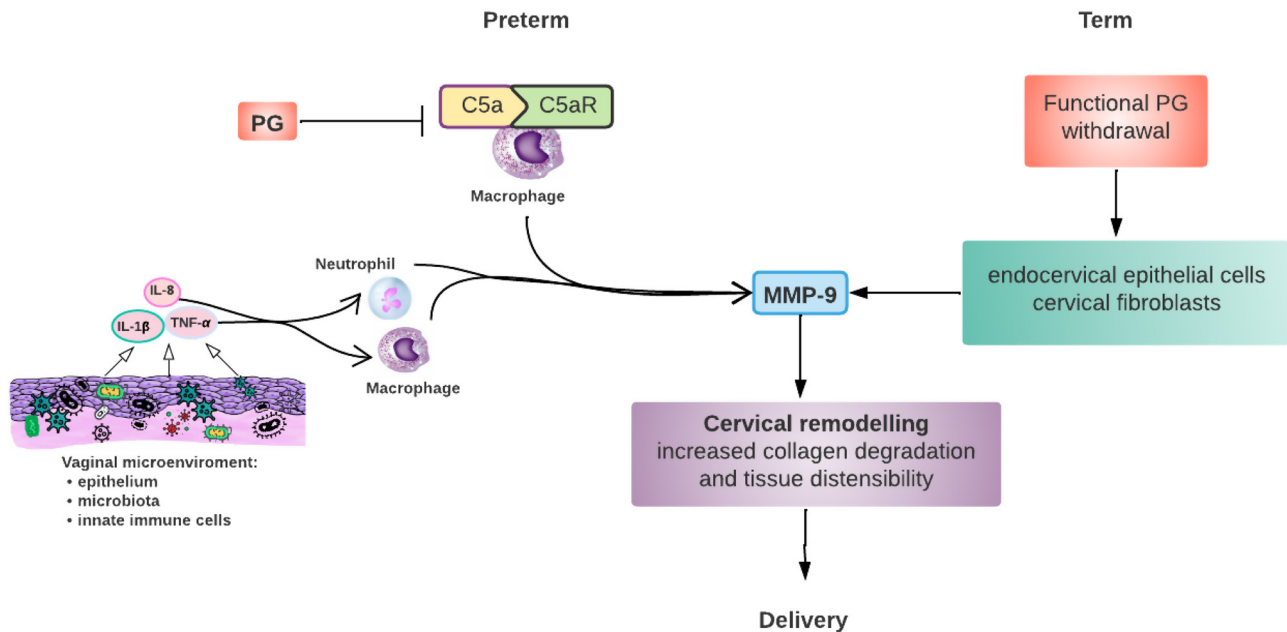
*et al.* 2010, Mahendroo 2012, Vink & Mourad 2017, Yellon 2017, Yoshida *et al.* 2019). Cervical remodelling involves reorganization of collagen fibril network with a gradual loss of tensile strength (Akins *et al.* 2011). It is an active dynamic process that begins from the subepithelial stroma long before uterine contraction (labour) and involves four overlapping phases, that is, softening, ripening, dilatation and postpartum repair (Read *et al.* 2007, Word *et al.* 2007, Timmons *et al.* 2010). These phases involve progressive loss of tensile strength, tissue compliance and integrity. The ripened cervix dilates sufficiently to allow passage of a term fetus. The process of cervical remodelling occurs as a continuum during gestation and may not be distinctly differentiated in relation to time (Word *et al.* 2007). Cervical ripening may also be described as involving increased tissue softening, effacement, dilation (Yellon 2019) and shortening, and it is clinically identified by an elevated Bishop's score (House *et al.* 2009).

Cervical remodelling affects the composition and structure of the ECM, as well as epithelial, stromal, immune and endothelial cell function in a closely regulated endocrine environment. After initiation of the remodelling (softening) process by the cervical stromal tissues, the cervical epithelial cells provide an immunomucosal barrier that protects the stromal compartment from inappropriate access of invading microorganisms during ECM remodelling (Read *et al.* 2007). This is achieved by epithelial proliferation, differentiation and secretion of large amounts of mucus (Timmons *et al.* 2010, Mahendroo 2012). After birth, tissue integrity and competency are rapidly recovered (postpartum repair) to prevent ascending intrauterine infection (Gonzalez *et al.* 2013).

### Role of matrix metalloproteinases in cervical remodelling associated with term and preterm delivery

Activation of MMPs and collagen degradation are involved in the common pathway to cervical remodelling in both term and preterm birth (Fig. 2). MMPs are ECM remodelling proteinases and their activities are tightly regulated during pregnancy. For instance, MMPs are temporally expressed in the cervix and cervicovaginal fluid during the final ripening processes. Though MMP-2 is constitutively expressed during pregnancy, it increases gradually as cervical ripening approaches in order to enhance collagen denaturation. In contrast, MMP-1 and -9 are selectively expressed and are only activated during the final cervical ripening process. Upregulation of MMP-1, -3, -7 and -8 has





**Figure 2** Matrix metalloproteinase-9 (MMP-9) induced cervical remodelling in term and preterm birth. At term, functional progesterone (PG) withdrawal (not mere reduction) stimulates endocervical epithelial cells and cervical fibroblasts to produce MMP-9, whereas MMP-9 is released by macrophages after the binding of complement component 5a (C5a) to its receptor (C5aR) during preterm labour. MMP-9 can also be released by both neutrophils and macrophages stimulated by pro-inflammatory cytokines and chemokines induced by host immune response to vaginal dysbiosis. The released MMP-9 stimulates increased cervical collagen degradation and tissue distensibility leading to remodelling and delivery eventually. Progesterone inhibits MMP-9 release by inhibiting C5aR expression on macrophages.

also been reported in cervical tissues around labour (Geng *et al.* 2016).

MMP-9 appears to be the main collagenase involved in cervical remodelling in term and preterm labour via plausibly different functional mechanisms (Fig. 2). The mechanisms indicate that PTB is not a mere quickening of the normal physiological cervical processes that lead to term delivery (Gonzalez *et al.* 2011a). At term, endocervical epithelial cells and cervical fibroblasts produce MMP-9 induced by functional progesterone (PG) withdrawal (not mere reduction) (Gonzalez *et al.* 2011a, Yellon 2017). Cytokines released by other gestational tissues, such as the myometrium, placenta and fetal membranes, also augment the release of MMPs in the cervix in the absence of inflammatory cells at term (Thomson *et al.* 1999, Gomez-Lopez *et al.* 2010). By contrast, during preterm labour, MMP-9 is released by macrophages stimulated by binding of complement component 5a (C5a) to its receptor (C5aR) on macrophages (Gonzalez *et al.* 2011b). PG prevented PTB in mouse model by decreasing the expression of C5aR on macrophages and inhibiting the release of MMP-9 (Fig. 2) (Gonzalez *et al.* 2011b). Therefore, cervical remodelling at term and preterm are essentially the same mechanism triggered by different mediators and effector cells (Fig. 2) (Gonzalez *et al.* 2011a,b, 2013).

### Pathomechanism of MMPs- and TIMPs-induced ECM modulation during pregnancy and delivery

Prior to labour at term, cervicovaginal MMP-9 correlated with cervical ripening (Choi *et al.* 2009). Serum MMP-9 has been shown to be higher in women that deliver preterm compared to term women (Tency *et al.* 2012). The MMP-9:TIMP-1 and MMP-9:TIMP-2 ratios were increased in women who delivered preterm (<34 weeks) compared to gestational age-matched controls (i.e. not in preterm labour) or women in labour at term. These ratios facilitated gelatinolysis and ECM degradation in preterm labour (Tency *et al.* 2012). While TIMP-1 and -2 concentrations were lower in preterm, irrespective of labour, TIMP-4 and MMP-9 concentrations were increased in labour.

Microbial invasion of the amniotic cavity possibly due to cervicovaginal and/or intrauterine infection induces inflammatory responses that lead to preterm prelabour rupture of membranes and sPTB. A crucial part of this process is the increase in MMP-9 and reduction in MMP-2 that induces labour (Maymon *et al.* 2000a). Intrauterine infection can also induce an increase in MMP-3 and reduction in TIMP-2 (Maymon *et al.* 2001, Park *et al.* 2003). The inflammatory responses leading to the release of MMPs are mediated by cytokines. For example, tumour necrosis factor (TNF- $\alpha$ ) stimulated the release of MMP-1 and -3 and

suppressed TIMP in a dose-dependent manner in chorionic cells (So *et al.* 1992). TNF- $\alpha$  also upregulated proMMP-9 in human myometrial smooth muscle cells (Roh *et al.* 2000). TNF- $\alpha$  mediated upregulation of MMPs and subsequent degradation of collagen and other components of the ECM is believed to be dependent on nuclear factor kappa B (NF- $\kappa$ B) signalling. This is because of the correlation between MMP-9 activity and NF- $\kappa$ B in human term myocyte cultures (Choi *et al.* 2007). Various inflammatory cytokines also induce the release of MMPs from cervical tissues and fetal membranes as well as inflammatory cells such as leukocytes (Geng *et al.* 2016).

In addition to mediating cervical ECM remodelling during pregnancy and childbirth, MMPs also induce similar ECM degradation in cervical tissues as part of cancer formation and progression although triggered by a different stimulus. However, MMP-induced cervical ECM degradation in cervical carcinoma appears to be a part in a complex pathological pathway that transforms normal cells to neoplastic phenotype. The subsequent sections of this review shall highlight various molecular mechanisms through which cervical epithelial tissues are transformed to cancer phenotypes and how they gain access to the bloodstream to metastasize to distant tissues.

### Role of MMPs in cervical carcinoma

Cervical carcinoma is the fourth most common cancer worldwide (Yuan *et al.* 2017) and the most common gynaecological cancer (Chen *et al.* 2021). It is the second leading cause of cancer death among young women, with persistent human papillomavirus (HPV) infection identified as the main aetiological risk factor (Siegel *et al.* 2018, Chen *et al.* 2021). Cancer-associated high-risk papillomavirus types (hrHPV) immortalize and transform cervical epithelial cells using viral E5, E6 and E7 oncogenes (Kivi *et al.* 2012).

Tumour metastasis is a complex process involving loss of cell–cell and cell–matrix adhesion, degradation of ECM and induction of angiogenesis (Zhang *et al.* 2014). Apart from degrading matrix proteins, MMPs also cleave several non-matrix proteins including cytokines, growth factors, adhesion molecules, lipoproteins and clotting factors, leading to their shedding, activation or inactivation. Although the levels of MMPs in normal adult tissues are typically low, tissues with inflammation or undergoing active remodelling in certain physiological or pathological processes/conditions express increased levels of MMPs (Ye 2015). For instance, elevated expression of MMPs including MMP-2, -9, -11 and -12 has been observed in invasive cervical carcinomas compared with normal tissues (Sheu

*et al.* 2003, Vazquez-Ortiz *et al.* 2005). MMPs have been implicated in pathophysiological processes such as cell apoptosis, matrix remodelling, epithelial–mesenchymal transition (EMT) (Rosas *et al.* 2008, Quintero-Fabián *et al.* 2019) and cellular proliferation by which they regulate the microenvironment and behaviours of cancer cells (Chen *et al.* 2021).

EMT, which involves destruction of intercellular junctions and cell–basement membrane adhesion, degradation of ECM and components of basement membrane induced by MMPs, increases infiltration and tumour cell migration ability. The cells become motile and invasive and can metastasize to distant tissues via the bloodstream (Quintero-Fabián *et al.* 2019).

MMPs regulate ECM turnover and facilitate cancer occurrence, invasion and metastasis (Libra *et al.* 2009, Zhu *et al.* 2018). Overexpression of MMPs indicates poor prognosis for cervical cancer (Chen *et al.* 2021). MMP-1 regulates cervical cancer growth and lymph node metastasis via EMT and shows promise as a prognosticator of lymph node metastasis of cervical carcinoma (Tian *et al.* 2018). Knockdown of MMP-1 resulted in decreased proliferation, migration and invasion of cervical cancer cell lines, upregulated expression of the epithelial marker E-cadherin and downregulated expression of the metastasis-associated gene vimentin (Tian *et al.* 2018).

MMP-7 is involved in cell proliferation, migration and invasion acting as an oncogene in cervical cancer cells. MMP-7 expression in the tissue and serum was significantly higher in cervical cancer patients compared to healthy individuals and correlated with increased pathological grade, clinical stage and lymph metastasis. Therefore, MMP-7 may be a clinically applicable biomarker for cervical carcinoma (Zhu *et al.* 2018). Similarly, MMP-7 mRNA and proteins were reported to be higher in cervical neoplastic tissues than normal tissues and in nodal metastatic group than in no nodal metastatic group. The authors concluded that MMP-7 may be a useful marker in determining the invasive and metastatic potential of cervical squamous cell carcinoma (Wu *et al.* 2006). MMP-7 is primarily produced by neoplastic cells, while most MMPs are expressed by stromal cells, such as fibroblasts, vascular and inflammatory cells (Overall & Kleinfeld 2006). MMP-7 may be a specific tumour cell signal that induces stromal cell components required for angiogenesis (Ito *et al.* 2007). For instance, it reactivates inactive vascular endothelial growth factor (VEGF) from stromal fibroblasts, thereby stimulating angiogenesis in pancreatic cancer cells (Ito *et al.* 2007).

Sheu *et al.* reported that while MMP-7 expression was much lower, the expression of MMP-2 and MMP-9

was significantly higher in squamous cell carcinoma of the uterine cervix, and their gelatinolytic activity was strongly correlated with lymphovascular permeation and subsequent lymph node metastasis. MMP-2 and MMP-9 were related to clinical stage, nodal metastasis and recurrence of the squamous cell carcinoma (Sheu *et al.* 2003). However, MMP-2 and MMP-9 may exhibit different roles in cervical tumour progression. For instance, MMP-2 could be associated with aggressive behaviour and poor/worse prognosis (Sier *et al.* 2006, Noriyuki *et al.* 2007, Azevedo Martins *et al.* 2020), while MMP-9 expression reduces in high-grade tumours (Rauvala *et al.* 2006) and is associated with favourable prognosis (Azevedo Martins *et al.* 2020).

Furthermore, MMP-10 promotes tumour progression in the cervix through regulation of angiogenic and apoptotic pathways. MMP-10 regulates cervical tumour cell migration and invasion, and endothelial cell tube formation with associated resistance to apoptosis. Increasing MMP-10 expression stimulates the expression of pro-angiogenic (hypoxia-inducible factor (HIF)-1 $\alpha$  and MMP-2) and pro-metastatic factors (plasminogen activator inhibitor-1 (PAI-1) and CXCR2). Inhibition of MMP-10 action, for example, with siRNA *in vivo*, reduced tumour growth and associated angiogenesis and stimulated apoptosis (Zhang *et al.* 2014).

### Pathomechanism of MMPs- and TIMPs-induced cancer invasion, migration, progression and metastasis

The process of tumour invasion commences with the disruption of intercellular junctions of neoplastic epithelial cells *in situ* and their adhesion to the basement membrane (Fig. 3 and Table 1). The collagen fibrils and other proteins of the basement membrane are then degraded by proteolytic enzymes including MMP-2, MMP-9 (collagen IV) and MMP-14 (collagen I) (Zhai *et al.* 2005, Zhang & Nothnick 2005) secreted by the neoplastic epithelial cells. Tumour cell degradation of ECM also involves MMP-1 and -3 (Sato *et al.* 2009). The spaces created by the degraded basement membrane permit tumour cell invasion into the stroma. The stromal fibroblasts cells respond by producing more ECM and reinforce collagen fibres that encourage cell motility (Jodele *et al.* 2006). The invading neoplastic epithelial cells (Azevedo Martins *et al.* 2020) and stromal fibroblast cells (Jodele *et al.* 2006) continue to secrete proteolytic enzymes (MMPs) to degrade the surrounding ECM (remodelling) to facilitate migration and tumour enlargement, while they (tumour cells) interact with the stromal (fibroblasts,

vascular, lymphovascular, endothelial and immune) cells and ECM to form the tumour microenvironment (Jodele *et al.* 2006, Azevedo Martins *et al.* 2020).

The tumour–stroma interaction or tumour–stroma ratio appears crucial in the prognosis of certain cancers including cervical cancer (Azevedo Martins *et al.* 2020). For example, cellular interaction between human cervical carcinoma cells and normal cervical fibroblasts transformed the cancer cells to the invasive phenotype by enhancing production and gene expression of proMMP-1, proMMP-3 and MMP-14, as well as activation of proMMP-2 (Sato *et al.* 2004). The interaction between tumour and fibroblast cells also enhances the expression of extracellular matrix metalloproteinase inducer (EMMPRIN)/CD147 on cervical cancer cell surface. The EMMPRIN mainly engages in the improvement of stromal MMP-1 and -3 expressions (Sato *et al.* 2009).

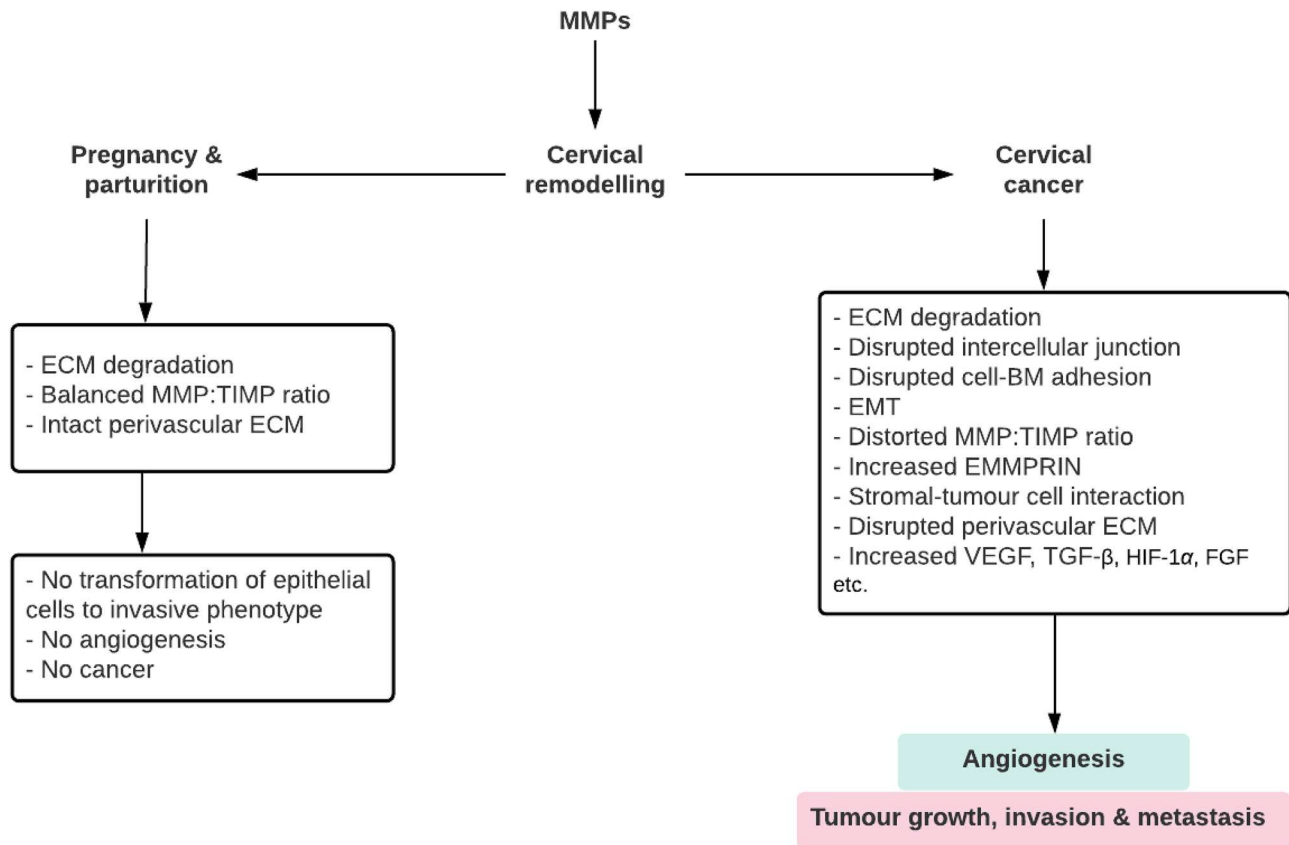
The innermost zone of the growing tumour forms a hypoxic and necrotic core due to oxygen and nutrient deprivation. The tumour cells respond to the decrease in oxygen and nutrient levels by secreting large amounts of VEGF-A that stimulates the formation of new blood vessels (angiogenesis) to promote tumour survival, growth and progression (Rundhaug 2005, Azevedo Martins *et al.* 2020). Angiogenesis is the rate-limiting step in tumour progression (Bielenberg & Zetter 2015). The MMPs also remodel the perivascular ECM to release angiogenic factors (Roy *et al.* 2006).

Subsequently, the basement membrane of adjacent blood vessels is degraded by the proteolytic actions of MMPs (particularly MMP-2 and MMP-9), exposing VEGF-A receptors (e.g. VEGF receptor-1 and 2) (Quintero-Fabián *et al.* 2019) expressed on pericytes and endothelial cells of the blood vessels and encouraging more angiogenesis. Tumour cells gain entrance into the bloodstream through the spaces created by the ruptured basement membrane of the blood vessels and increase their chances of metastasis to distant tissues.

The activities of the MMPs are directly inhibited by TIMP-1 and TIMP-2 which regulate tumour occurrence and progression (Azevedo Martins *et al.* 2020). Both inhibitors inhibit tumour growth, invasion and metastasis by inhibiting MMPs and exhibiting growth factor-like activities by which they inhibit angiogenesis (Gomez *et al.* 1997). The overall survival of women with advanced cervical cancer has been increased by Bevacizumab – a humanized monoclonal anti-VEGF antibody (Tewari *et al.* 2014).

In addition to remodelling of ECM, MMP-2 and MMP-9 can also act synergistically to establish the angiogenic phenotype and invasiveness of neoplastic





**Figure 3** Mechanisms and outcome of matrix metalloproteinase-induced cervical extracellular matrix remodelling in pregnancy and childbirth vs cervical carcinoma. Though the ECM of cervical tissues is degraded in both processes, there is no epithelial cell transformation to invasive phenotype and angiogenesis in pregnancy-associated cervical remodelling, hence, no cancer. Apart from the initial trigger, for example, human papilloma virus infection, the threshold and/or pattern of MMP expression that alter the normal proliferative, invasive and immune tolerance mechanisms of cervical remodelling to cancer growth, invasion and metastasis are yet to be determined and warrant further investigation. BM, basement membrane; ECM, extracellular matrix; EMMPRIN, extracellular matrix metalloproteinase inducer; EMT, epithelial-mesenchymal transformation; FGF, fibroblast growth factor; HIF-1 $\alpha$ , hypoxia-inducible factor-1 alpha; MMP, matrix metalloproteinase; TGF- $\beta$ , transforming growth factor-beta; TIMP, tissue inhibitor of matrix metalloproteinase; VEGF, vascular endothelial growth factor.

keratinocytes (Masson *et al.* 2005). Another mechanism employed by MMP-2, MMP-9 and MMP-14 to induce cancer angiogenesis thereby promoting tumour growth and invasion involves the cleavage of pro-transforming growth factor- $\beta$  (TGF- $\beta$ ) in a CD44-dependent manner (Yu & Stamenkovic 2000, Quintero-Fabián *et al.* 2019). TGF- $\beta$  stimulates changes in cancer-associated fibroblasts such as increase in myofibroblasts, fibronectin, laminin and actin alpha 2 that promote tumour invasion (Casey *et al.* 2008). TGF- $\beta$  also induces EMT that enhances the ability of cancer cells to metastasize. TGF- $\beta$  can either inhibit or stimulate cell growth. Cells undergo a phenotypic switch during cancer development that activates the growth-promoting/invasive action of TGF- $\beta$ . The ability of cells to activate this tumour promoter action of TGF- $\beta$  is attributed to several cellular and nuclear factors, including deficiency of cyclin-dependent kinase inhibitors (Bachman & Park 2005).

There is a close correlation in the expression of MMP-2 and MMP-14 in cervical cancer cells (Sheu *et al.* 2003). MMP-14 activates pro-MMP-2 to MMP-2 which determines ECM adhesion and human endothelial cell maturation (Lee *et al.* 2013).

The hypoxic tumour microenvironment also stimulates other growth factors that enhance (in synergy with VEGF) neovascularization that ensures the exchange of oxygen and nutrients with the tumour cells. These growth factors include HIF, endothelial growth factor, basic and acidic fibroblast growth factor (FGF), oestrogen, prostaglandin E<sub>1</sub> and E<sub>2</sub>, interleukin-8 (IL-8), TNF and neuropilins (Quintero-Fabián *et al.* 2019). VEGF and FGF-2 also stimulate endothelial cells to secrete MMP-2- and MMP-9-containing vesicles thereby facilitating the proteolytic activity necessary for the angiogenesis-related invasive and morphogenic processes (Taraboletti *et al.*

**Table 1** Similarities and differences between matrix metalloproteinase-induced cervical extracellular matrix remodelling in pregnancy and childbirth vs cervical carcinoma.

Mechanism	Pregnancy/childbirth	Cervical carcinoma	References
Origin	Subepithelial stroma	Epithelial cells	Read <i>et al.</i> (2007), Timmons <i>et al.</i> (2010), Mahendroo (2012)
Stimulus	Progesterone withdrawal, complement activation	Altered vaginal microbiota, HPV infection	Gonzalez <i>et al.</i> (2011a,b), Yellon (2017), Siegel <i>et al.</i> (2018), Norenhag <i>et al.</i> (2020), So <i>et al.</i> (2020), Chen <i>et al.</i> (2021), Short <i>et al.</i> (2021), Kyrgiou & Moscicki (2022), Lin <i>et al.</i> (2022)
Epithelial-mesenchymal transformation	No	Yes	Bachman & Park (2005), Tian <i>et al.</i> (2018), Quintero-Fabián <i>et al.</i> (2019)
Intercellular junction	Intact	Disrupted	Zhai <i>et al.</i> (2005), Zhang & Nothnick (2005), Zhang <i>et al.</i> (2014), Quintero-Fabián <i>et al.</i> (2019)
Cell-BM adhesion	Intact	Disrupted	Zhai <i>et al.</i> (2005), Zhang & Nothnick (2005), Zhang <i>et al.</i> (2014), Quintero-Fabián <i>et al.</i> (2019)
Perivascular ECM	Intact	Disrupted	Roy <i>et al.</i> (2006), Quintero-Fabián <i>et al.</i> (2019)
Stromal-tumour cell interaction	No	Yes	Sato <i>et al.</i> (2004, 2009), Jodele <i>et al.</i> (2006), Azevedo Martins <i>et al.</i> (2020)
Angiogenesis	No	Yes	Gomez <i>et al.</i> (1997), Yu & Stamenkovic (2000), Taraboletti <i>et al.</i> (2002), Word <i>et al.</i> (2007), Rundhaug (2005), Roy <i>et al.</i> (2006), Ito <i>et al.</i> (2007), Zhang <i>et al.</i> (2014), Bielenberg & Zetter (2015), Quintero-Fabián <i>et al.</i> (2019), Azevedo Martins <i>et al.</i> (2020), Chen <i>et al.</i> (2020)
MMP:TIMP ratio	Balanced	Distorted	Athayde <i>et al.</i> (1999), Sundrani <i>et al.</i> (2017), Quintero-Fabián <i>et al.</i> (2019)
EMMPRIN	No significant change	Increased	Sato <i>et al.</i> (2009)
VEGF, TGF- $\beta$ , HIF-1 $\alpha$ , FGF levels	Low or inactive	Increased	Yu & Stamenkovic (2000), Ito <i>et al.</i> (2007), Quintero-Fabián <i>et al.</i> (2019)
MMP levels	Increased	Increased	Sheu <i>et al.</i> (2003), Sato <i>et al.</i> (2004), Zhai <i>et al.</i> (2005), Sier <i>et al.</i> (2006), Wu <i>et al.</i> (2006), Noriyuki <i>et al.</i> (2007), Sato <i>et al.</i> (2009), Zhang <i>et al.</i> (2014), Tian <i>et al.</i> (2018), Zhu <i>et al.</i> (2018), Azevedo Martins <i>et al.</i> (2020)
ECM degradation	Yes	Yes	Gomez <i>et al.</i> (1997), Athayde <i>et al.</i> (1999), Choi <i>et al.</i> (2007), Libra <i>et al.</i> (2009), Sato <i>et al.</i> (2009), Gonzalez <i>et al.</i> (2011a,b), Zhang <i>et al.</i> (2014), Geng <i>et al.</i> (2016), Sundrani <i>et al.</i> (2017), Yellon (2017, 2020), Zhu <i>et al.</i> (2018), Quintero-Fabián <i>et al.</i> (2019)

BM, basement membrane; ECM, extracellular matrix; EMMPRIN, extracellular matrix metalloproteinase inducer; FGF, fibroblast growth factor; HIF-1 $\alpha$ , hypoxia-inducible factor-1 alpha; HPV, human papillomavirus; MMP, matrix metalloproteinase; TGF- $\beta$ , transforming growth factor-beta; TIMP, tissue inhibitor of matrix metalloproteinase; VEGF, vascular endothelial growth factor.

2002). With the new blood supply and drainage, tumour cells are able to exist as an independent organ (Egeblad *et al.* 2010). Further details on the roles of MMPs and their interactions with growth factors, inhibitor proteins and the EMT process in tumour formation and propagation can be found in the review by Quintero-Fabián and colleagues (Quintero-Fabián *et al.* 2019).

### Role of vaginal microbiome in altering MMP activity for both labour and CIN/cancer

The normal vaginal microbiota is dominated by lactobacilli and exhibits low immunostimulatory capacity in pregnant

and non-pregnant state (Amabebe & Anumba 2018, 2020). An altered vaginal microbiota with depleted lactobacilli and overgrowth of pathobionts may attract immune cells such as neutrophils and macrophages which release MMPs. The pathway of sub-optimal vaginal microbiota, genital tract inflammation, release of MMP-9 by polymorphonuclear leucocytes, ascending genital tract infection promoted by MMP-induced cervical ECM degradation and subsequent PTB have been suggested in pregnant women living with HIV infection (Short *et al.* 2021). That is, during pregnancy, the trigger for MMP release may be vaginal dysbiosis and resultant host immune response. Though causality is yet to be proven, the mechanism here is somewhat different

from binding of C5a and C5aR on macrophages (Fig. 2). Instead of complement activation on macrophages, there is an increase in MMP-9/TIMP-1 ratio that correlates with dominance of pathogenic anaerobes, increase in IL-1 $\beta$ , IL-8 and TNF- $\alpha$ , and polymorphonuclear leucocyte counts in a positive feedback fashion. MMP-9 may be released by both neutrophils and macrophages (Short *et al.* 2021) and not macrophages alone.

Similarly, an altered vaginal microbiota deficient in lactobacilli with associated HPV infection and proinflammatory state is also found in women with cervical intra-epithelial neoplasia (CIN) and is associated with disease progression (Mitra *et al.* 2020, 2021). With such dysbiotic vaginal microbiota, there is persistent or slower regression of the disease (Mitra *et al.* 2020). Even surgical excision of the disease may not restore the vaginal microbiota and cytokine levels to optimal levels (Mitra *et al.* 2021). Inability to restore a lactobacilli microbiota could be responsible for the high susceptibility of such women to pre-invasive and invasive disease recurrence after treatment (Mitra *et al.* 2020). However, in another cohort of non-pregnant women, surgery was associated with decrease in *Atopobium vaginae* and concentrations of IL-1 $\beta$ , TNF- $\alpha$ , MIP-1 $\alpha$  and eotaxin (Kawahara *et al.* 2021).

Apart from inhibiting CIN regression, a dysbiotic vaginal microbiota may also stimulate a pro-inflammatory state that enhances proliferation of malignant cells and HPV E6 and E7 oncogene expression (Kyrgiou & Moscicki 2022). By contrast, a lactobacilli-enriched vaginal microbiota is associated with regression of untreated CIN-2 within 12 months (Mitra *et al.* 2020).

Furthermore, a vaginal microbiota dominated by non-lactobacilli species or *Lactobacillus iners* may be a favourable niche for HPV infection. Such dysbiotic microbiota is associated with three- to five-fold greater risk of any prevalent HPV and two to three times higher odds for high-risk HPV infection as well as cervical dysplasia and carcinoma compared with *Lactobacillus crispatus* (Norenhag *et al.* 2020). *L. crispatus* is often decreased in women with CIN/cancer (So *et al.* 2020). CIN or cervical cancer with HPV infection is associated with increased vaginal bacteria diversity predominated by *Gardnerella vaginalis*, *Prevotella* spp., *A. vaginae*, *Dialister invisus*, *Sneathia* spp., *Pseudomonas* spp., and *Fingoldia magna* (So *et al.* 2020, Xie *et al.* 2020, Lin *et al.* 2022). Sialidase secreted by *G. vaginalis* and *Prevotella* spp. (Amabebe & Anumba 2022) may contribute significantly to the progression of HPV infection to CIN/cancer (Lin *et al.* 2022).

Taking together, vaginal dysbiosis is a strong stimulus for the release of MMP-9 which can facilitate the

pathway to labour prematurely or progression of cervical neoplasia through several mechanisms including cervical ECM degradation and angiogenesis. The downstream mechanisms and structural and biochemical changes (in pregnancy/labour vs carcinoma) as highlighted in Table 1 may differ. For instance, in normal pregnancy/labour, the MMP/TIMP ratio is usually balanced with no angiogenesis. However, disrupted MMP/TIMP ratios in favour of MMPs and angiogenesis are common in cervical neoplasia (Table 1) and vaginal dysbiosis-induced MMP release during gestation (Short *et al.* 2021). CIN/cancer-associated vaginal microbiota may be useful in predicting the risk of HPV-related diseases and guiding treatment strategies (Norenhag *et al.* 2020). Whether vaginal dysbiosis without clinical infections of HPV or HIV causes CIN or cancer is yet to be fully elucidated and necessitates further investigation. The roles of specific vaginal bacterial community types in the development/progression or prevention/regression of HPV-related diseases (Castanheira *et al.* 2021) need to be unravelled.

## Conclusion and future perspectives

MMPs are involved in complex extracellular tissue modulation that includes degradation, remodelling and exchange of ECM, which contribute to homeostasis under normal physiological conditions (Quintero-Fabián *et al.* 2019) such as cervical remodelling during pregnancy and puerperium (Geng *et al.* 2016). However, in cancer such as that of the uterine cervix, this extensive network of extracellular tissue modulation is altered leading to abnormal tissue growth, neovascularization and metastasis that disrupt homeostasis (Quintero-Fabián *et al.* 2019).

Though the initial stimulus may differ, that is, pregnancy hormones or complement activation vs altered vaginal microbiota (dysbiosis) or HPV infection, MMPs induce cervical ECM remodelling during pregnancy and childbirth (Geng *et al.* 2016), as well as in cervical carcinoma. However, the origin, molecular mechanisms and eventual outcome of both MMP-associated processes differ (Table 1). Pregnancy-associated cervical remodelling originates from the subepithelial stroma while the epithelium provides immunomucosal protection against opportunistic infections (Read *et al.* 2007, Timmons *et al.* 2010, Mahendroo 2012). An interesting subject for future investigation is the likelihood of attributing the changes in the stromal compartment to activities of genes and proteins expressed by the overlying epithelium. During pregnancy and parturition-induced cervical remodelling

which is a physiological (normal) process, there is a balance in the MMP:TIMP ratio. MMPs do not stimulate the perivascular ECM to release pro-angiogenic factors such as VEGF. VEGF is usually present in low inactive form (Ito *et al.* 2007). Hence, angiogenesis, the hallmark of cancer growth and development, is absent, though there may be increased vascular permeability due to increased inducible nitric oxide synthase (Word *et al.* 2007). The MMPs do not degrade basement membrane of blood vessels, so there is no entry of epithelial cells into the bloodstream and metastasis. The MMP-induced EMT and stromal fibroblast-neoplastic epithelial cell interaction characteristic of tumour formation and progression are also absent (Fig. 3 and Table 1). MMP-9 appears to be the primary proteolytic enzyme involved, although its release is triggered by different pathways depending on the gestational age at birth, that is, term or preterm (Fig. 2) (Gonzalez *et al.* 2011a,b, 2013).

By contrast, besides the presence of HPV infection, cancer-associated cervical remodelling commences with disruption of cell-cell and cell-basement membrane adhesion, EMT (Zhai *et al.* 2005, Zhang & Nothnick 2005, Zhang *et al.* 2014, Quintero-Fabián *et al.* 2019) and tumour cell-stromal interaction (Sato *et al.* 2004, 2009, Jodele *et al.* 2006, Azevedo Martins *et al.* 2020) (Fig. 3 and Table 1). During cervical carcinoma, more MMPs and TIMPs are involved including MMP-1, -2, -3, -7, -9, -10 and -14 (Sheu *et al.* 2003, Sato *et al.* 2004, 2009, Zhai *et al.* 2005, Sier *et al.* 2006, Wu *et al.* 2006, Noriyuki *et al.* 2007, Zhang *et al.* 2014, Tian *et al.* 2018, Zhu *et al.* 2018, Azevedo Martins *et al.* 2020), TIMP-1 and -2 (Sheu *et al.* 2003, Azevedo Martins *et al.* 2020) and EMMPRIN (Sato *et al.* 2009). The MMP:TIMP ratio is dysregulated leading to unregulated degradation of ECM components of cervical tissue and surrounding blood vessels (Quintero-Fabián *et al.* 2019). Through the degradation of ECM components and activation of pro-angiogenic factors such as VEGF and TGF- $\beta$ , MMPs promote angiogenesis, invasion and metastasis in diverse cancer tissues including cervical cancer (Quintero-Fabián *et al.* 2019) (Fig. 3 and Table 1). As demonstrated with pancreatic tumour cells, inactive VEGF released by fibroblast is reactivated by tumour cells in the tumour microenvironment, thereby stimulating angiogenesis (Ito *et al.* 2007). Connective tissue growth factor that sequesters VEGF *in vivo* and *in vitro* (Chen *et al.* 2020) inactivates VEGF from fibroblasts and inhibits angiogenesis, whereas MMPs such as MMP-7 from tumour cells reactivates it and promotes angiogenesis (Ito *et al.* 2007). Therefore, MMPs are regarded as angiomodulators that may modulate cancer-related angiogenesis in a cell context-dependent

manner (Quintero-Fabián *et al.* 2019). The absence or perhaps insufficiency of this angiomodulatory role in pregnancy and puerperium is intriguing and necessitates further investigation.

Regardless of the initial stimulus, although elevated MMP expression is observed in both cervical remodelling during pregnancy and birth, and cervical carcinoma, the point (threshold) at which such expression of MMP becomes metabolically problematic is still unresolved. It is believed that high MMP expression induced erroneous metabolic cascades that stimulate the development of complex abnormal cell pathways that eventually alter cell architecture to a cancerous phenotype. MMPs do not cause cancer *per se*, but they induce cancer progression by increasing growth, invasiveness and metastasis through angiogenesis. Therefore, they are targets for regulation of tumour development (Quintero-Fabián *et al.* 2019). To the best of our knowledge, whether high levels of MMPs can stimulate cervical ECM remodelling and lead to cervical cancer in non-pregnant HPV negative women is yet to be extensively demonstrated.

Furthermore, the trigger of MMP-induced angiogenesis in cervical carcinoma that is absent in physiological pregnancy-associated cervical remodelling is yet to be elucidated, or is cervical remodelling at pregnancy and puerperium a physiological (benign) neoplasm? Perhaps, the action of MMPs in cervical carcinoma is another mechanism whereby tumour cells exploit the physiological proliferative, invasive and immune tolerance mechanisms that promote normal human pregnancy and childbirth to establish a nutrient supply and circumvent or alter the host immune response (Holtan *et al.* 2009). Further investigations are required to determine the threshold signal(s), the determinant factors and the molecular mechanisms of microenvironmental tissue-specific alteration of cell metabolism and phenotype leading to cancer such as cervical carcinoma. The prognosis of pregnant women with positive diagnosis of CIN and cervical carcinoma also requires further evaluation.

#### Declaration of interest

The authors declare that there is no conflict of interest that could be perceived as prejudicing the impartiality of this review.

#### Funding

This work did not receive any specific grant from any funding agency in the public, commercial or not-for-profit sector.



**Author contribution statement**

E A conceived the idea and created the figures, while E A, H O and D A drafted, revised the manuscript and approved it for submission.

**References**

- Akins ML, Luby-Phelps K, Bank RA & Mahendroo M** 2011 Cervical softening during pregnancy: regulated changes in collagen cross-linking and composition of matricellular proteins in the mouse. *Biology of Reproduction* **84** 1053–1062. (<https://doi.org/10.1095/biolreprod.110.089599>)
- Amabebe E & Anumba DOC** 2018 The vaginal microenvironment: the physiologic role of lactobacilli. *Frontiers in Medicine* **5** 181. (<https://doi.org/10.3389/fmed.2018.00181>)
- Amabebe E & Anumba DOC** 2020 Female gut and genital tract microbiota-induced crosstalk and differential effects of short-chain fatty acids on immune sequelae. *Frontiers in Immunology* **11** 2184. (<https://doi.org/10.3389/fimmu.2020.02184>)
- Amabebe E & Anumba DOC** 2022 Mechanistic insights into immune suppression and evasion in bacterial vaginosis. *Current Microbiology* **79** 84. (<https://doi.org/10.1007/s00284-022-02771-2>)
- Amălinei C, Căruntu ID & Bălan RA** 2007 Biology of metalloproteinases. *Romanian Journal of Morphology and Embryology* **48** 323–334.
- Anumba DO, El Gelany S, Elliott SL & Li TC** 2010 Circulating levels of matrix proteases and their inhibitors in pregnant women with and without a history of recurrent pregnancy loss. *Reproductive Biology and Endocrinology* **8** 62. (<https://doi.org/10.1186/1477-7827-8-62>)
- Arpino V, Brock M & Gill SE** 2015 The role of TIMPs in regulation of extracellular matrix proteolysis. *Matrix Biology* **44–46** 247–254. (<https://doi.org/10.1016/j.matbio.2015.03.005>)
- Athayde N, Romero R, Gomez R, Maymon E, Pacora P, Mazor M, Yoon BH, Fortunato S, Menon R, Ghezzi F, et al.** 1999 Matrix metalloproteinases-9 in preterm and term human parturition. *Journal of Maternal-Fetal Medicine* **8** 213–219. ([https://doi.org/10.1002/\(SICI\)1520-6661\(199909\)10\(8\):5<213::AID-MFM3>3.0.CO;2-R](https://doi.org/10.1002/(SICI)1520-6661(199909)10(8):5<213::AID-MFM3>3.0.CO;2-R))
- Azevedo Martins JM, Rabelo-Santos SH, do Amaral Westin MC & Zeferino LC** 2020 Tumoral and stromal expression of MMP-2, MMP-9, MMP-14, TIMP-1, TIMP-2, and VEGF-A in cervical cancer patient survival: a competing risk analysis. *BMC Cancer* **20** 660. (<https://doi.org/10.1186/s12885-020-07150-3>)
- Bachman KE & Park BH** 2005 Dual nature of TGF-beta signaling: tumor suppressor vs. tumor promoter. *Current Opinion in Oncology* **17** 49–54. (<https://doi.org/10.1097/01.cco.0000143682.45316.ae>)
- Becher N, Hein M, Danielsen CC & Uldbjerg N** 2010 Matrix metalloproteinases in the cervical mucus plug in relation to gestational age, plug compartment, and preterm labor. *Reproductive Biology and Endocrinology* **8** 113. (<https://doi.org/10.1186/1477-7827-8-113>)
- Bielenberg DR & Zetter BR** 2015 The contribution of angiogenesis to the process of metastasis. *Cancer Journal* **21** 267–273. (<https://doi.org/10.1097/PPO.0000000000000138>)
- Brew K & Nagase H** 2010 The tissue inhibitors of metalloproteinases (TIMPs): an ancient family with structural and functional diversity. *Biochimica et Biophysica Acta* **1803** 55–71. (<https://doi.org/10.1016/j.bbamcr.2010.01.003>)
- Casey TM, Eneman J, Crocker A, White J, Tessitore J, Stanley M, Harlow S, Bunn JY, Weaver D, Muss H, et al.** 2008 Cancer associated fibroblasts stimulated by transforming growth factor beta1 (TGF-beta 1) increase invasion rate of tumor cells: a population study. *Breast Cancer Research and Treatment* **110** 39–49. (<https://doi.org/10.1007/s10549-007-9684-7>)
- Castanheira CP, Sallas ML, Nunes RAL, Lorenzi NPC & Termin L** 2021 Microbiome and cervical cancer. *Pathobiology* **88** 187–197. (<https://doi.org/10.1159/000511477>)
- Chen Z, Zhang N, Chu HY, Yu Y, Zhang ZK, Zhang G & Zhang BT** 2020 Connective tissue growth factor: from molecular understandings to drug discovery. *Frontiers in Cell and Developmental Biology* **8** 593269. (<https://doi.org/10.3389/fcell.2020.593269>)
- Chen W, Huang S, Shi K, Yi L, Liu Y & Liu W** 2021 Prognostic role of matrix metalloproteinases in cervical cancer: a meta-analysis. *Cancer Control* **28** 10732748211033743. (<https://doi.org/10.1177/10732748211033743>)
- Choi SJ, Oh SY, Kim JH & Roh CR** 2007 Changes of nuclear factor kappa B (NF-kappaB), cyclooxygenase-2 (COX-2) and matrix metalloproteinase-9 (MMP-9) in human myometrium before and during term labor. *European Journal of Obstetrics, Gynecology, and Reproductive Biology* **132** 182–188. (<https://doi.org/10.1016/j.ejogrb.2006.07.024>)
- Choi SJ, Jung KL, Oh SY, Kim JH & Roh CR** 2009 Cervicovaginal matrix metalloproteinase-9 and cervical ripening in human term parturition. *European Journal of Obstetrics, Gynecology, and Reproductive Biology* **142** 43–47. (<https://doi.org/10.1016/j.ejogrb.2008.08.009>)
- Curry Jr TE & Osteen KG** 2003 The matrix metalloproteinase system: changes, regulation, and impact throughout the ovarian and uterine reproductive cycle. *Endocrine Reviews* **24** 428–465. (<https://doi.org/10.1210/er.2002-0005>)
- Danforth DN, Veis A, Breen M, Weinstein HG, Buckingham JC & Manalo P** 1974 The effect of pregnancy and labor on the human cervix: changes in collagen, glycoproteins, and glycosaminoglycans. *American Journal of Obstetrics and Gynecology* **120** 641–651. ([https://doi.org/10.1016/0002-9378\(74\)90608-5](https://doi.org/10.1016/0002-9378(74)90608-5))
- Egeblad M, Nakasone ES & Werb Z** 2010 Tumors as organs: complex tissues that interface with the entire organism. *Developmental Cell* **18** 884–901. (<https://doi.org/10.1016/j.devcel.2010.05.012>)
- Fullár A, Dudás J, Oláh L, Hollósi P, Papp Z, Sobel G, Karászi K, Paku S, Baghy K & Kovalszky I** 2015 Remodeling of extracellular matrix by normal and tumor-associated fibroblasts promotes cervical cancer progression. *BMC Cancer* **15** 256. (<https://doi.org/10.1186/s12885-015-1272-3>)
- Geng J, Huang C & Jiang S** 2016 Roles and regulation of the matrix metalloproteinase system in parturition. *Molecular Reproduction and Development* **83** 276–286. (<https://doi.org/10.1002/mrd.22626>)
- Gomez DE, Alonso DE, Yoshiji H & Thorgeirsson UP** 1997 Tissue inhibitors of metalloproteinases: structure, regulation and biological functions. *European Journal of Cell Biology* **74** 111–122.
- Gomez-Lopez N, Guilbert LJ & Olson DM** 2010 Invasion of the leukocytes into the fetal-maternal interface during pregnancy. *Journal of Leukocyte Biology* **88** 625–633. (<https://doi.org/10.1189/jlb.1209796>)
- Gonzalez JM, Dong Z, Romero R & Girardi G** 2011a Cervical remodeling/ripening at term and preterm delivery: the same mechanism initiated by different mediators and different effector cells. *PLoS ONE* **6** e26877. (<https://doi.org/10.1371/journal.pone.0026877>)
- Gonzalez JM, Franzke CW, Yang F, Romero R & Girardi G** 2011b Complement activation triggers metalloproteinases release inducing cervical remodeling and preterm birth in mice. *American Journal of Pathology* **179** 838–849. (<https://doi.org/10.1016/j.ajpath.2011.04.024>)
- Gonzalez JM, Romero R & Girardi G** 2013 Comparison of the mechanisms responsible for cervical remodeling in preterm and term labor. *Journal of Reproductive Immunology* **97** 112–119. (<https://doi.org/10.1016/j.jri.2012.07.008>)
- Heng YJ, Di Quinzio MK, Liong S, Permez M, Rice GE & Georgiou HM** 2012 Temporal investigation of matrix metalloproteinases and their inhibitors in human cervicovaginal fluid in late pregnancy and labor. *Reproductive Sciences* **19** 55–63. (<https://doi.org/10.1177/1933719111413299>)



- Holtan SG, Creedon DJ, Haluska P & Markovic SN** 2009 Cancer and pregnancy: parallels in growth, invasion, and immune modulation and implications for cancer therapeutic agents. *Mayo Clinic Proceedings* **84** 985–1000. ([https://doi.org/10.1016/S0025-6196\(11\)60669-1](https://doi.org/10.1016/S0025-6196(11)60669-1))
- House M, Kaplan DL & Socrate S** 2009 Relationships between mechanical properties and extracellular matrix constituents of the cervical stroma during pregnancy. *Seminars in Perinatology* **33** 300–307. (<https://doi.org/10.1053/j.semperi.2009.06.002>)
- Howard EW, Bullen EC & Banda MJ** 1991 Preferential inhibition of 72- and 92-kDa gelatinases by tissue inhibitor of metalloproteinases-2. *Journal of Biological Chemistry* **266** 13070–13075. ([https://doi.org/10.1016/S0021-9258\(18\)98804-6](https://doi.org/10.1016/S0021-9258(18)98804-6))
- Ito TK, Ishii G, Chiba H & Ochiai A** 2007 The VEGF angiogenic switch of fibroblasts is regulated by MMP-7 from cancer cells. *Oncogene* **26** 7194–7203. (<https://doi.org/10.1038/sj.onc.1210535>)
- Jodele S, Blavier L, Yoon JM & DeClerck YA** 2006 Modifying the soil to affect the seed: role of stromal-derived matrix metalloproteinases in cancer progression. *Cancer Metastasis Reviews* **25** 35–43. (<https://doi.org/10.1007/s10555-006-7887-8>)
- Kawahara R, Fujii T, Kukimoto I, Nomura H, Kawasaki R, Nishio E, Ichikawa R, Tsukamoto T & Iwata A** 2021 Changes to the cervicovaginal microbiota and cervical cytokine profile following surgery for cervical intraepithelial neoplasia. *Scientific Reports* **11** 2156. (<https://doi.org/10.1038/s41598-020-80176-6>)
- Kivi N, Rönty M, Tarkkanen J, Auvinen P & Auvinen E** 2012 Cell culture model predicts human disease: altered expression of junction proteins and matrix metalloproteinases in cervical dysplasia. *BMC Clinical Pathology* **12** 9–9. (<https://doi.org/10.1186/1472-6890-12-9>)
- Kubota T, Itagaki M, Hoshino C, Nagata M, Morozumi T, Kobayashi T, Takagi R & Yoshie H** 2008 Altered gene expression levels of matrix metalloproteinases and their inhibitors in periodontitis-affected gingival tissue. *Journal of Periodontology* **79** 166–173. (<https://doi.org/10.1902/jop.2008.070159>)
- Kugler A** 1999 Matrix metalloproteinases and their inhibitors. *Anticancer Research* **19** 1589–1592. (<https://doi.org/10.1385/1-59259-144-2:139>)
- Kyrgiou M & Moscicki AB** 2022 Vaginal microbiome and cervical cancer. *Seminars in Cancer Biology* In press. (<https://doi.org/10.1016/j.semcancer.2022.03.005>)
- Lee H, Chang KW, Yang HY, Lin PW, Chen SU & Huang YL** 2013 MT1-MMP regulates MMP-2 expression and angiogenesis-related functions in human umbilical vein endothelial cells. *Biochemical and Biophysical Research Communications* **437** 232–238. (<https://doi.org/10.1016/j.bbrc.2013.06.046>)
- Leppert PC** 1995 Anatomy and physiology of cervical ripening. *Clinical Obstetrics and Gynecology* **38** 267–279. (<https://doi.org/10.1097/00003081-199506000-00009>)
- Libra M, Scalisi A, Vella N, Clementi S, Sorio R, Stivala F, Spandidos DA & Mazarino C** 2009 Uterine cervical carcinoma: role of matrix metalloproteinases (review). *International Journal of Oncology* **34** 897–903. (<https://doi.org/10.3892/ijco.00000215>)
- Lin W, Zhang Q, Chen Y, Dong B, Xue H, Lei H, Lu Y, Wei X & Sun P** 2022 Changes of the vaginal microbiota in HPV infection and cervical intraepithelial neoplasia: a cross-sectional analysis. *Scientific Reports* **12** 2812. (<https://doi.org/10.1038/s41598-022-06731-5>)
- Mahendroo M** 2012 Cervical remodeling in term and preterm birth: insights from an animal model. *Reproduction* **143** 429–438. (<https://doi.org/10.1530/REP-11-0466>)
- Masson V, De La Ballina LR, Munaut C, Wielockx B, Jost M, Maillard C, Blacher S, Bajou K, Itoh T, Itohara S, *et al.*** 2005 Contribution of host MMP-2 and MMP-9 to promote tumor vascularization and invasion of malignant keratinocytes. *FASEB Journal* **19** 234–236. (<https://doi.org/10.1096/fj.04-2140fje>)
- Maymon E, Romero R, Pacora P, Gervasi MT, Gomez R, Edwin SS & Yoon BH** 2000a Evidence of in vivo differential bioavailability of the active forms of matrix metalloproteinases 9 and 2 in parturition, spontaneous rupture of membranes, and intra-amniotic infection. *American Journal of Obstetrics and Gynecology* **183** 887–894. (<https://doi.org/10.1067/mob.2000.108878>)
- Maymon E, Romero R, Pacora P, Gomez R, Athayde N, Edwin S & Yoon BH** 2000b Human neutrophil collagenase (matrix metalloproteinase 8) in parturition, premature rupture of the membranes, and intrauterine infection. *American Journal of Obstetrics and Gynecology* **183** 94–99. (<https://doi.org/10.1067/mob.2000.105344>)
- Maymon E, Romero R, Pacora P, Gomez R, Mazor M, Edwin S, Chaiworapongsa T, Kim JC, Yoon BH, Menon R, *et al.*** 2001 A role for the 72 kDa gelatinase (MMP-2) and its inhibitor (TIMP-2) in human parturition, premature rupture of membranes and intraamniotic infection. *Journal of Perinatal Medicine* **29** 308–316. (<https://doi.org/10.1515/JPM.2001.044>)
- Mitra A, MacIntyre DA, Ntrisots G, Smith A, Tsilidis KK, Marchesi JR, Bennett PR, Moscicki AB & Kyrgiou M** 2020 The vaginal microbiota associates with the regression of untreated cervical intraepithelial neoplasia 2 lesions. *Nature Communications* **11** 1999. (<https://doi.org/10.1038/s41467-020-15856-y>)
- Mitra A, MacIntyre DA, Paraskevaidi M, Moscicki AB, Mahajan V, Smith A, Lee YS, Lyons D, Paraskevaidis E, Marchesi JR, *et al.*** 2021 The vaginal microbiota and innate immunity after local excisional treatment for cervical intraepithelial neoplasia. *Genome Medicine* **13** 176. (<https://doi.org/10.1186/s13073-021-00977-w>)
- Montagnana M, Volpe A, Lippi G, Caramaschi P, Salvagno GL, Biasi D, Bambara LM & Guidi GC** 2007 Relationship between matrix metalloproteinases/tissue inhibitors of matrix metalloproteinases systems and autoantibody patterns in systemic sclerosis. *Clinical Biochemistry* **40** 837–842. (<https://doi.org/10.1016/j.clinbiochem.2007.03.023>)
- Mühl D, Nagy B, Woth G, Falusi B, Bogár L, Weber G & Lantos J** 2011 Dynamic changes of matrix metalloproteinases and their tissue inhibitors in severe sepsis. *Journal of Critical Care* **26** 550–555. (<https://doi.org/10.1016/j.jcrc.2011.02.011>)
- Myers KM, Paskaleva AP, House M & Socrate S** 2008 Mechanical and biochemical properties of human cervical tissue. *Acta Biomaterialia* **4** 104–116. (<https://doi.org/10.1016/j.actbio.2007.04.009>)
- Nagase H, Visse R & Murphy G** 2006 Structure and function of matrix metalloproteinases and TIMPs. *Cardiovascular Research* **69** 562–573. (<https://doi.org/10.1016/j.cardiores.2005.12.002>)
- Navratilova Z, Zatloukal J, Kriegova E, Kolek V & Petrek M** 2012 Simultaneous up-regulation of matrix metalloproteinases 1, 2, 3, 7, 8, 9 and tissue inhibitors of metalloproteinases 1, 4 in serum of patients with chronic obstructive pulmonary disease. *Respirology* **17** 1006–1012. (<https://doi.org/10.1111/j.1440-1843.2012.02197.x>)
- Nga AD, Yap SL, Samsudin A, Abdul-Rahman PS, Hashim OH & Mimiwati Z** 2014 Matrix metalloproteinases and tissue inhibitors of metalloproteinases in the aqueous humour of patients with primary angle closure glaucoma – a quantitative study. *BMC Ophthalmology* **14** 33. (<https://doi.org/10.1186/1471-2415-14-33>)
- Niebroj-Dobosz I, Janik P, Sokołowska B & Kwiecinski H** 2010 Matrix metalloproteinases and their tissue inhibitors in serum and cerebrospinal fluid of patients with amyotrophic lateral sclerosis. *European Journal of Neurology* **17** 226–231. (<https://doi.org/10.1111/j.1468-1331.2009.02775.x>)
- Nissi R, Talvensaaari-Mattila A, Kotila V, Niinimäki M, Järvelä I & Turpeenniemi-Hujanen T** 2013 Circulating matrix metalloproteinase MMP-9 and MMP-2/TIMP-2 complex are associated with spontaneous early pregnancy failure. *Reproductive Biology and Endocrinology* **11** 2. (<https://doi.org/10.1186/1477-7827-11-2>)
- Norenhag J, Du J, Olovsson M, Verstraelen H, Engstrand L & Brusselsaers N** 2020 The vaginal microbiota, human papillomavirus and cervical dysplasia: a systematic review and network meta-analysis. *BJOG* **127** 171–180. (<https://doi.org/10.1111/1471-0528.15854>)
- Noriyuki M, Sumi T, Zhi X, Misugi F, Nobeyama H, Yoshida H, Matsumoto Y, Yasui T, Honda K & Ishiko O** 2007 Vascular

- endothelial growth factor, matrix metalloproteinases, and cyclooxygenase-2 influence prognosis of uterine cervical cancer in young women. *International Journal of Oncology* **31** 531–536. (<https://doi.org/10.3892/ijo.31.3.531>)
- Overall CM & Kleinfeld O** 2006 Tumour microenvironment – opinion: validating matrix metalloproteinases as drug targets and anti-targets for cancer therapy. *Nature Reviews: Cancer* **6** 227–239. (<https://doi.org/10.1038/nrc1821>)
- Park KH, Chaiworapongsa T, Kim YM, Espinoza J, Yoshimatsu J, Edwin S, Gomez R, Yoon BH & Romero R** 2003 Matrix metalloproteinase 3 in parturition, premature rupture of the membranes, and microbial invasion of the amniotic cavity. *Journal of Perinatal Medicine* **31** 12–22. (<https://doi.org/10.1515/JPM.2003.002>)
- Quintero-Fabián S, Arreola R, Becerril-Villanueva E, Torres-Romero JC, Arana-Argáez V, Lara-Riegos J, Ramírez-Camacho MA & Alvarez-Sánchez ME** 2019 Role of matrix metalloproteinases in angiogenesis and cancer. *Frontiers in Oncology* **9** 1370. (<https://doi.org/10.3389/fonc.2019.01370>)
- Raffetto JD & Khalil RA** 2008 Matrix metalloproteinases and their inhibitors in vascular remodeling and vascular disease. *Biochemical Pharmacology* **75** 346–359. (<https://doi.org/10.1016/j.bcp.2007.07.004>)
- Rauvala M, Aglund K, Puistola U, Turpeenniemi-Hujanen T, Horvath G, Willén R & Stendahl U** 2006 Matrix metalloproteinases-2 and -9 in cervical cancer: different roles in tumor progression. *International Journal of Gynecological Cancer* **16** 1297–1302. (<https://doi.org/10.1111/j.1525-1438.2006.00448.x>)
- Read CP, Word RA, Ruschinsky MA, Timmons BC & Mahendroo MS** 2007 Cervical remodeling during pregnancy and parturition: molecular characterization of the softening phase in mice. *Reproduction* **134** 327–340. (<https://doi.org/10.1530/REP-07-0032>)
- Reunanen N & Kähäri V** 2000–2013 Matrix metalloproteinases in cancer cell invasion. In *Madame Curie Bioscience Database* [Internet]. TX, Austin: Landes Bioscience. (available at: <https://www.ncbi.nlm.nih.gov/books/NBK6598/>)
- Roh CR, Oh WJ, Yoon BK & Lee JH** 2000 Up-regulation of matrix metalloproteinase-9 in human myometrium during labour: a cytokine-mediated process in uterine smooth muscle cells. *Molecular Human Reproduction* **6** 96–102. (<https://doi.org/10.1093/molehr/6.1.96>)
- Rosas IO, Richards TJ, Konishi K, Zhang Y, Gibson K, Lokshin AE, Lindell KO, Cisneros J, Macdonald SD, Pardo A, et al.** 2008 MMP1 and MMP7 as potential peripheral blood biomarkers in idiopathic pulmonary fibrosis. *PLoS Medicine* **5** e93. (<https://doi.org/10.1371/journal.pmed.0050093>)
- Roy R, Zhang B & Moses MA** 2006 Making the cut: protease-mediated regulation of angiogenesis. *Experimental Cell Research* **312** 608–622. (<https://doi.org/10.1016/j.yexcr.2005.11.022>)
- Rundhaug JE** 2005 Matrix metalloproteinases and angiogenesis. *Journal of Cellular and Molecular Medicine* **9** 267–285. (<https://doi.org/10.1111/j.1582-4934.2005.tb00355.x>)
- Rysz J, Banach M, Stolarek RA, Pasnik J, Cialkowska-Rysz A, Koktyz R, Piechota M & Baj Z** 2007 Serum matrix metalloproteinases MMP-2 and MMP-9 and metalloproteinase tissue inhibitors TIMP-1 and TIMP-2 in diabetic nephropathy. *Journal of Nephrology* **20** 444–452.
- Sato T, Sakai T, Noguchi Y, Takita M, Hirakawa S & Ito A** 2004 Tumor-stromal cell contact promotes invasion of human uterine cervical carcinoma cells by augmenting the expression and activation of stromal matrix metalloproteinases. *Gynecologic Oncology* **92** 47–56. (<https://doi.org/10.1016/j.ygyno.2003.09.012>)
- Sato T, Ota T, Watanabe M, Imada K, Nomizu M & Ito A** 2009 Identification of an active site of EMMPRIN for the augmentation of matrix metalloproteinase-1 and -3 expression in a co-culture of human uterine cervical carcinoma cells and fibroblasts. *Gynecologic Oncology* **114** 337–342. (<https://doi.org/10.1016/j.ygyno.2009.04.004>)
- Sheu BC, Lien HC, Ho HN, Lin HH, Chow SN, Huang SC & Hsu SM** 2003 Increased expression and activation of gelatinolytic matrix metalloproteinases is associated with the progression and recurrence of human cervical cancer. *Cancer Research* **63** 6537–6542.
- Short C-ES, Quinlan RA, Wang X, Preda VG, Smith A, Marchesi JR, Lee YS, MacIntyre DA, Bennett PR & Taylor GP** 2021 Vaginal microbiota, genital inflammation and extracellular matrix remodelling collagenase: MMP-9 in pregnant women with HIV, a potential preterm birth mechanism warranting further exploration. *Frontiers in Cellular and Infection Microbiology* **11** 750103. (<https://doi.org/10.3389/fcimb.2021.750103>)
- Siegel RL, Miller KD & Jemal A** 2018 Cancer statistics, 2018. CA: *A Cancer Journal for Clinicians* **68** 7–30. (<https://doi.org/10.3322/caac.21442>)
- Sier CF, Zuidwijk K, Zijlmans HJ, Hanemaaijer R, Mulder-Stapel AA, Prins FA, Dreef EJ, Kenter GG, Fleuren GJ & Gorter A** 2006 EMMPRIN-induced MMP-2 activation cascade in human cervical squamous cell carcinoma. *International Journal of Cancer* **118** 2991–2998. (<https://doi.org/10.1002/ijc.21778>)
- So T, Ito A, Sato T, Mori Y & Hirakawa S** 1992 Tumor necrosis factor-alpha stimulates the biosynthesis of matrix metalloproteinases and plasminogen activator in cultured human chorionic cells. *Biology of Reproduction* **46** 772–778. (<https://doi.org/10.1095/biolreprod46.5.772>)
- So KA, Yang EJ, Kim NR, Hong SR, Lee JH, Hwang CS, Shim SH, Lee SJ & Kim TJ** 2020 Changes of vaginal microbiota during cervical carcinogenesis in women with human papillomavirus infection. *PLoS ONE* **15** e0238705. (<https://doi.org/10.1371/journal.pone.0238705>)
- Stojanovic N, Lewandowski K, Salata I, Bienkiewicz M, Tuck S, Prelevic G & Press M** 2010 Serum levels of matrix metalloproteinases MMP-2 and MMP-9 and their inhibitors in women with glucose intolerance in pregnancy and normal controls. *Gynecological Endocrinology* **26** 201–207. (<https://doi.org/10.1080/09513590902972026>)
- Sundrani D, Narang A, Mehendale S, Joshi S & Chavan-Gautam P** 2017 Investigating the expression of MMPs and TIMPs in preterm placenta and role of CpG methylation in regulating MMP-9 expression. *IUBMB Life* **69** 985–993. (<https://doi.org/10.1002/iub.1687>)
- Taraboletti G, D'Ascenzo S, Borsotti P, Giovazzi R, Pavan A & Dolo V** 2002 Shedding of the matrix metalloproteinases MMP-2, MMP-9, and MT1-MMP as membrane vesicle-associated components by endothelial cells. *American Journal of Pathology* **160** 673–680. ([https://doi.org/10.1016/S0002-9440\(10\)64887-0](https://doi.org/10.1016/S0002-9440(10)64887-0))
- Tayebjee MH, Karalis I, Nadar SK, Beevers DG, MacFadyen RJ & Lip GY** 2005 Circulating matrix metalloproteinase-9 and tissue inhibitors of metalloproteinases-1 and -2 levels in gestational hypertension. *American Journal of Hypertension* **18** 325–329. (<https://doi.org/10.1016/j.amjhyper.2004.09.014>)
- Tency I, Verstraelen H, Kroes I, Holtappels G, Verhasselt B, Vanechoutte M, Verhelst R & Tempelman M** 2012 Imbalances between matrix metalloproteinases (MMPs) and tissue inhibitor of metalloproteinases (TIMPs) in maternal serum during preterm labor. *PLoS ONE* **7** e49042. (<https://doi.org/10.1371/journal.pone.0049042>)
- Tewari KS, Sill MW, Long 3rd HJ, Penston RT, Huang H, Ramondetta LM, Landrum LM, Oaknin A, Reid TJ, Leitao MM, et al.** 2014 Improved survival with bevacizumab in advanced cervical cancer. *New England Journal of Medicine* **370** 734–743. (<https://doi.org/10.1056/NEJMoa1309748>)
- Thomson AJ, Telfer JF, Young A, Campbell S, Stewart CJ, Cameron IT, Greer IA & Norman JE** 1999 Leukocytes infiltrate the myometrium during human parturition: further evidence that labour is an inflammatory process. *Human Reproduction* **14** 229–236. (<https://doi.org/10.1093/humrep/14.1.229>)
- Tian R, Li X, Gao Y, Li Y, Yang P & Wang K** 2018 Identification and validation of the role of matrix metalloproteinase-1 in cervical cancer. *International Journal of Oncology* **52** 1198–1208. (<https://doi.org/10.3892/ijo.2018.4267>)



- Timmons B, Akins M & Mahendroo M** 2010 Cervical remodeling during pregnancy and parturition. *Trends in Endocrinology and Metabolism* **21** 353–361. (<https://doi.org/10.1016/j.tem.2010.01.011>)
- Vazquez-Ortiz G, Pina-Sanchez P, Vazquez K, Duenas A, Taja L, Mendoza P, Garcia JA & Salcedo M** 2005 Overexpression of cathepsin F, matrix metalloproteinases 11 and 12 in cervical cancer. *BMC Cancer* **5** 68. (<https://doi.org/10.1186/1471-2407-5-68>)
- Vink J & Mourad M** 2017 The pathophysiology of human premature cervical remodeling resulting in spontaneous preterm birth: where are we now? *Seminars in Perinatology* **41** 427–437. (<https://doi.org/10.1053/j.semperi.2017.07.014>)
- Word RA, Li XH, Hnat M & Carrick K** 2007 Dynamics of cervical remodeling during pregnancy and parturition: mechanisms and current concepts. *Seminars in Reproductive Medicine* **25** 69–79. (<https://doi.org/10.1055/s-2006-956777>)
- Wu SH, Zhang J, Li Y & Li JM** 2006 Expression of ETV5 and MMP-7 in early stage cervical squamous cell carcinoma and its role in lymphatic metastasis. *Ai Zheng* **25** 315–319.
- Xie Y, Feng Y, Li W, Zhan F, Huang G, Hu H, Xiong Y, Tan B & Chen T** 2020 Revealing the disturbed vaginal Microbiota caused by cervical cancer using high-throughput sequencing technology. *Frontiers in Cellular and Infection Microbiology* **10** 538336. (<https://doi.org/10.3389/fcimb.2020.538336>)
- Xing Y, Shepherd N, Lan J, Li W, Rane S, Gupta SK, Zhang S, Dong J & Yu Q** 2017 MMPs/TIMPs imbalances in the peripheral blood and cerebrospinal fluid are associated with the pathogenesis of HIV-1-associated neurocognitive disorders. *Brain, Behavior, and Immunity* **65** 161–172. (<https://doi.org/10.1016/j.bbi.2017.04.024>)
- Ye S** 2015 Putative targeting of matrix metalloproteinase-8 in atherosclerosis. *Pharmacology and Therapeutics* **147** 111–122. (<https://doi.org/10.1016/j.pharmthera.2014.11.007>)
- Yellon SM** 2017 Contributions to the dynamics of cervix remodeling prior to term and preterm birth. *Biology of Reproduction* **96** 13–23. (<https://doi.org/10.1095/biolreprod.116.142844>)
- Yellon SM** 2019 Immunobiology of cervix ripening. *Frontiers in Immunology* **10** 3156. (<https://doi.org/10.3389/fimmu.2019.03156>)
- Yoshida K, Jayyosi C, Lee N, Mahendroo M & Myers KM** 2019 Mechanics of cervical remodelling: insights from rodent models of pregnancy. *Interface Focus* **9** 20190026. (<https://doi.org/10.1098/rsfs.2019.0026>)
- Yu Q & Stamenkovic I** 2000 2000 cell surface-localized matrix metalloproteinase-9 proteolytically activates TGF-beta and promotes tumor invasion and angiogenesis. *Genes and Development* **14** 163–176. (<https://doi.org/10.1101/gad.14.2.163>)
- Yuan H, Krawczyk E, Blancato J, Albanese C, Zhou D, Wang N, Paul S, Alkhalawi F, Palechor-Ceron N, Dakic A, et al.** 2017 HPV positive neuroendocrine cervical cancer cells are dependent on Myc but not E6/E7 viral oncogenes. *Scientific Reports* **7** 45617. (<https://doi.org/10.1038/srep45617>)
- Zhai Y, Hotary KB, Nan B, Bosch FX, Muñoz N, Weiss SJ & Cho KR** 2005 Expression of membrane type 1 matrix metalloproteinase is associated with cervical carcinoma progression and invasion. *Cancer Research* **65** 6543–6550. (<https://doi.org/10.1158/0008-5472.CAN-05-0231>)
- Zhang X & Nothnick WB** 2005 The role and regulation of the uterine matrix metalloproteinase system in menstruating and non-menstruating species. *Frontiers in Bioscience* **10** 353–366. (<https://doi.org/10.2741/1533>)
- Zhang G, Miyake M, Lawton A, Goodison S & Rosser CJ** 2014 Matrix metalloproteinase-10 promotes tumor progression through regulation of angiogenic and apoptotic pathways in cervical tumors. *BMC Cancer* **14** 310. (<https://doi.org/10.1186/1471-2407-14-310>)
- Zhu L, Zheng X, Du Y, Xing Y, Xu K & Cui L** 2018 Matrix metalloproteinase-7 may serve as a novel biomarker for cervical cancer. *OncoTargets and Therapy* **11** 4207–4220. (<https://doi.org/10.2147/OTT.S160998>)

Received in final form 14 July 2022

Accepted 22 July 2022

Accepted Manuscript published online 22 July 2022