



This is a repository copy of *Preoperative chest radiograph*.

White Rose Research Online URL for this paper:

<https://eprints.whiterose.ac.uk/189313/>

Version: Supplemental Material

---

**Article:**

Salehi, M. and Rea, B. [orcid.org/0000-0002-4568-0359](https://orcid.org/0000-0002-4568-0359) (2022) Preoperative chest radiograph. *Heart*, 108 (15). pp. 1224-1246. ISSN 1355-6037

<https://doi.org/10.1136/heartjnl-2022-320973>

---

© 2022 Author(s) (or their employer(s)). This is an author-produced version of a paper subsequently published in *Heart*. Reuse of this manuscript version (excluding any databases, tables, diagrams, photographs and other images or illustrative material included where a another copyright owner is identified) is permitted strictly pursuant to the terms of the Creative Commons Attribution-Non Commercial 4.0 International License (<http://creativecommons.org/licenses/by-nc/4.0/>).

**Reuse**

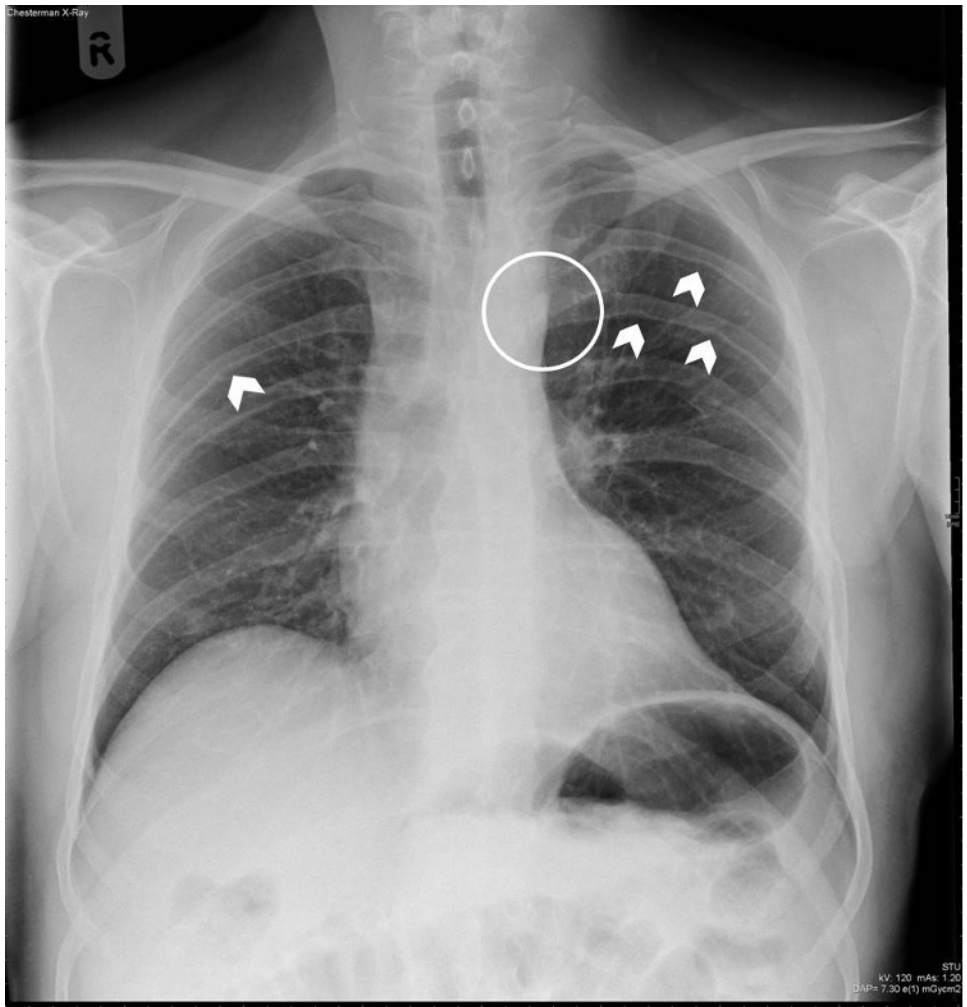
This article is distributed under the terms of the Creative Commons Attribution-NonCommercial (CC BY-NC) licence. This licence allows you to remix, tweak, and build upon this work non-commercially, and any new works must also acknowledge the authors and be non-commercial. You don't have to license any derivative works on the same terms. More information and the full terms of the licence here: <https://creativecommons.org/licenses/>

**Takedown**

If you consider content in White Rose Research Online to be in breach of UK law, please notify us by emailing [eprints@whiterose.ac.uk](mailto:eprints@whiterose.ac.uk) including the URL of the record and the reason for the withdrawal request.



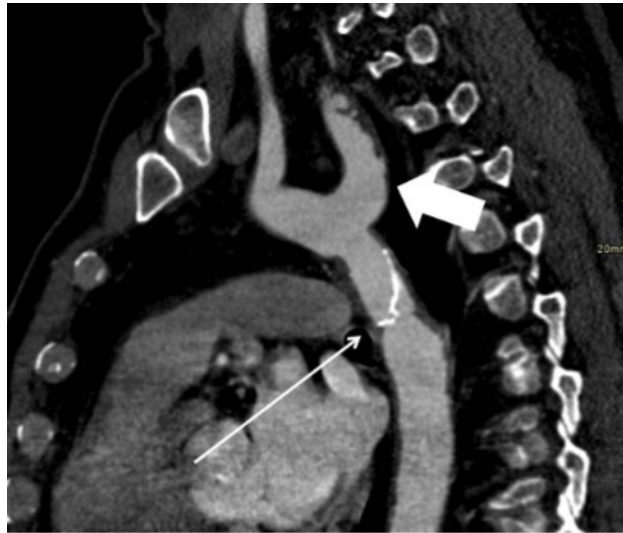
[eprints@whiterose.ac.uk](mailto:eprints@whiterose.ac.uk)  
<https://eprints.whiterose.ac.uk/>



Supplementary Figure 1



Supplementary Figure 2



Supplementary Figure 3