



This is a repository copy of *Assessing the comparative feasibility, acceptability and equivalence of videoconference interviews and face-to-face interviews using the time trade-off technique*.

White Rose Research Online URL for this paper:

<https://eprints.whiterose.ac.uk/189195/>

Version: Supplemental Material

Article:

Rowen, D. orcid.org/0000-0003-3018-5109, Mukuria, C., Bray, N. et al. (6 more authors) (2022) Assessing the comparative feasibility, acceptability and equivalence of videoconference interviews and face-to-face interviews using the time trade-off technique. *Social Science & Medicine*, 309. 115227. ISSN 0277-9536

<https://doi.org/10.1016/j.socscimed.2022.115227>

Reuse

This article is distributed under the terms of the Creative Commons Attribution-NonCommercial-NoDerivs (CC BY-NC-ND) licence. This licence only allows you to download this work and share it with others as long as you credit the authors, but you can't change the article in any way or use it commercially. More information and the full terms of the licence here: <https://creativecommons.org/licenses/>

Takedown

If you consider content in White Rose Research Online to be in breach of UK law, please notify us by emailing eprints@whiterose.ac.uk including the URL of the record and the reason for the withdrawal request.



eprints@whiterose.ac.uk
<https://eprints.whiterose.ac.uk/>

Supplementary materials: Assessing the equivalence and feasibility of video interviews and in-person interviews using the time trade-off technique

Section 1: Supplementary analyses on age, interview location and travel time

Figure A1: Age distribution by mode

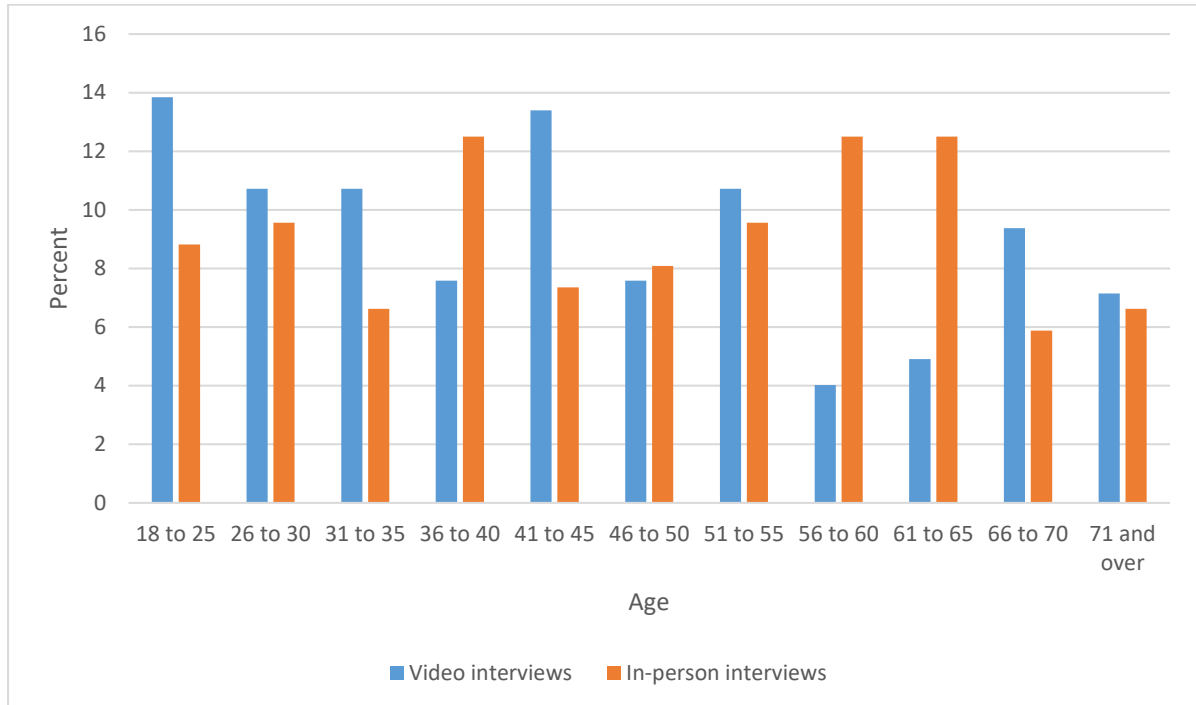


Table A1: Characteristics of respondents interviewed by stated preference of how they would have chosen to be interviewed

		Prefer video interview, n=135	Prefer in-person interview, n=102	Don't mind, n=123	P-value (two-sample test of proportions for prefer video vs in-person)
Gender	Male	37.8	54.9	56.1	0.009
	Female	62.2	45.1	43.1	
Mean age (SD)		41.8 (14.7)	51.2 (16.5)	45.4 (15.8)	
Age	Age 18 to 40	49.6	29.4	40.7	0.002
	Age 41 to 64	38.5	45.1	42.3	0.307
	Age 65 and over	11.9	25.5	17.1	0.007
IMD Index of multiple deprivation	1 or 2 (most deprived quintile)	7.4	8.8	11.4	0.694
	3,4,5,6,7,8	61.5	49.0	56.1	0.055
	9,10 (least deprived quintile)	29.6	39.2	27.6	0.122
	Prefer not to say	1.5	2.9	4.9	0.457
Marital status	Single	29.6	26.5	30.1	0.600
	Married/Partner	62.2	62.8	57.7	0.925
	Separated	2.2	1.0	4.1	0.477
	Divorced	3.7	5.9	6.5	0.426
	Widowed	2.2	2.9	1.6	0.733
	Prefer not to say		1.0	0	0.244
Employment status	In employment or self-employment	63.0	47.1	58.5	0.015
	Retired	8.9	30.4	20.3	<0.001
	Housework	1.5	0	2.4	0.214
	Student	10.4	14.7	8.1	0.318
	Seeking work	1.5	0	1.6	0.214

		Prefer video interview, n=135	Prefer in-person interview, n=102	Don't mind, n=123	P-value (two-sample test of proportions for prefer video vs in-person)
	Unemployed	3.0	2.0	1.6	0.630
	Long-term sick	4.4	2.0	4.9	0.311
	Carer or volunteer	3.0	1.0	2.4	0.273
	Prefer not to say	4.4	3.0	0	0.577
Educated after age of 16	Yes	97.0	94.1	94.3	0.273
	No	3.0	5.9	4.9	0.273
	Prefer not to say	0	0	0.8	
Degree or equivalent professional qualification	Yes	85.5	86.5	85.3	0.827
	No	13.0	13.5	14.7	0.910
	Prefer not to say	1.5	0	0	0.214
Home ownership/rental	Own your home outright, or with a mortgage	53.3	64.7	64.2	0.078
	Rent from a local authority	11.9	11.8	10.6	0.981
	Rent from the private sector	28.9	17.7	20.3	0.046
	Other	3.7	4.9	4.9	0.649
	Prefer not to say	2.2	1.0	0	0.477
Annual household income before tax (including benefits)	Up to £5,199	1.5	2.9	2.4	0.457
	£5,200 and up to £10,399	3.7	7.8	5.7	0.169
	£10,400 and up to £15,599	5.2	3.9	7.3	0.638
	£15,600 and up to £20,799	9.6	5.9	5.7	0.299
	£20,800 and up to £25,999	6.7	11.8	12.2	0.172
	£26,000 and up to £31,199	11.9	9.8	8.1	0.609
	£31,200 and up to £36,399	8.2	6.9	6.5	0.709
	£36,400 and up to £51,999	15.6	13.7	12.2	0.683
	£52,000 and above	23.0	23.5	25.2	0.928

		Prefer video interview, n=135	Prefer in-person interview, n=102	Don't mind, n=123	P-value (two-sample test of proportions for prefer video vs in-person)
	Prefer not to say	14.8	13.7	14.6	0.811
Day-to-day activities limited because of a health problem or disability	Yes, limited a lot	11.1	6.9	8.1	0.270
	Yes, limited a little	25.9	25.5	22.0	0.944
	No	63.0	67.7	70.0	0.453
Parent or guardian for a child or children aged under 18 years	Yes	34.1	13.7	27.6	<0.001
	No	65.2	86.3	72.4	
	Prefer not to say	0.7	0	0	
Ethnicity	White British	57.8	79.4	71.5	<0.001
	White non-British	11.1	10.8	6.5	0.942
	Asian / Asian British	10.4	2.9	7.3	0.027
	Black / African / Caribbean / Black British	10.4	2.9	8.1	0.027
	Mixed / Multiple ethnic groups	4.4	2.0	3.3	0.311
	Other ethnic group	3.7	0	2.4	0.050
	Prefer not to say	2.2	2.0	0.8	0.916
Have experienced ill health	In you, yourself	37.0	30.4	31.7	0.289
	In your family	77.0	83.3	81.3	0.232
	In caring for others	47.4	48.0	44.7	0.927

Section 2: Supplementary analyses on the interviewers

Table A2: Number of interviews taken and completed by interviewer (combined and by mode)

		Complete interviews retained		
	Interviews dropped (and not reported elsewhere in this report) due to quality concerns	Total interviews (n=360)	Video interviews (n=222)	In-person interviews (n=138)
Interviewer 1	13	49	34	15
Interviewer 2	8	68	36	32
Interviewer 3	0	72	47	25
Interviewer 4	10	57	35	22
Interviewer 5	9	81	55	26
Interviewer 6	0	33	17	16

Table A3: Flagged interviews using the EQ-VT quality control criteria by interviewer and by mode (generated using QC reports)

Interviewer	Video interviews, N=224						In-person interviews, N=136					
	N	Flagged N(%)	WC LT N(%)	Incon size N(%)	WC time N(%)	TTO time N(%)	N	Flagged N(%)	WC LT N(%)	Incon size N(%)	WC time N(%)	TTO time N(%)
1	34	3(9%)	1(3%)	1(3%)	0(0%)	1(3%)	15	2(13%)	2(13%)	0(0%)	0(0%)	0(0%)
2	36	1(3%)	0(0%)	1(3%)	0(0%)	0(0%)	32	1(3%)	0(0%)	0(0%)	0(0%)	1(3%)
3	47	0(0%)	0(0%)	0(0%)	0(0%)	0(0%)	25	0(0%)	0(0%)	0(0%)	0(0%)	0(0%)
4	35	0(0%)	0(0%)	0(0%)	0(0%)	0(0%)	22	1(5%)	0(0%)	0(0%)	0(0%)	1(5%)
5	55	9(16%)	0(0%)	5(9%)	0(0%)	4(7%)	26	2(8%)	0(0%)	2(8%)	0(0%)	0(0%)
6	17	1(6%)	0(0%)	1(6%)	0(0%)	0(0%)	16	0(0%)	0(0%)	0(0%)	0(0%)	0(0%)
In total	222	14(6%)	1(0%)	8(4%)	0(0%)	5(2%)	138	6(4%)	2(1%)	2(1%)	0(0%)	2(1%)

Notes: This table shows how many times each interviewer's TTO data have been flagged for data quality reasons. The total number of flagged interviews is shown in column 2, and the proportion of flagged interviews is shown in column 3. A given interview may be flagged for more than one reason. The flags are defined as follows:

- 1) WC LT - Interview is flagged if the interviewer does not enter the worse-than-dead element of one of the wheelchair examples
- 2) Incon size - Interview is flagged if the respondent has a clear inconsistency in their TTO ratings (the value for 55555 is not the lowest and is at least 0.5 higher than that of the state with the lowest value).
- 3) WC time - Interview is flagged if the interviewer does not spend at least 180 seconds (3 minutes) on the wheelchair example.
- 4) TTO time - Interview is flagged if the respondent does not spend at least 5 minutes on the 10 TTO tasks

Table A4: Clustering of TTO values by interviewer and by mode (generated using QC reports)

Interviewer	Video interviews, N=224						In-person interviews, N=136					
	Total Obs.	% Obs. at 1	% Obs. at 0.5	% Obs. at 0	% Obs. at -0.5	% Obs. at -1	Total Obs.	% Obs. at 1	% Obs. at 0.5	% Obs. at 0	% Obs. at -0.5	% Obs. at -1
1	340	1.2%	5.0%	2.6%	2.1%	7.4%	150	10.0%	2.7%	3.3%	5.3%	9.3%
2	360	16.1%	3.6%	3.3%	2.2%	11.7%	320	14.1%	4.4%	2.8%	0.9%	11.6%
3	470	12.8%	4.9%	1.3%	5.7%	1.1%	250	12.8%	7.6%	1.6%	2.0%	2.8%
4	350	12.0%	8.3%	5.7%	1.1%	10.3%	220	14.1%	3.2%	6.4%	5.9%	19.5%
5	550	13.1%	10.9%	2.4%	2.9%	5.3%	260	15.4%	4.6%	1.9%	3.8%	10.8%
6	170	18.8%	9.4%	17.6%	4.1%	5.9%	160	19.4%	5.6%	5.0%	0.0%	5.0%

Figure A2: Number of interviews retained, by interviewer and by mode

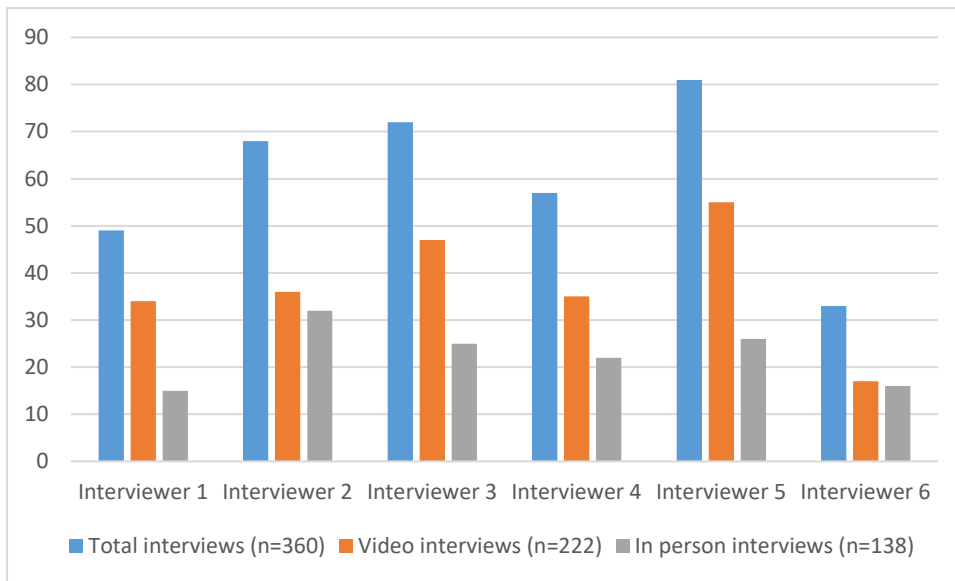


Figure A3: Interview duration in minutes, mean and standard deviation by interviewer and by mode

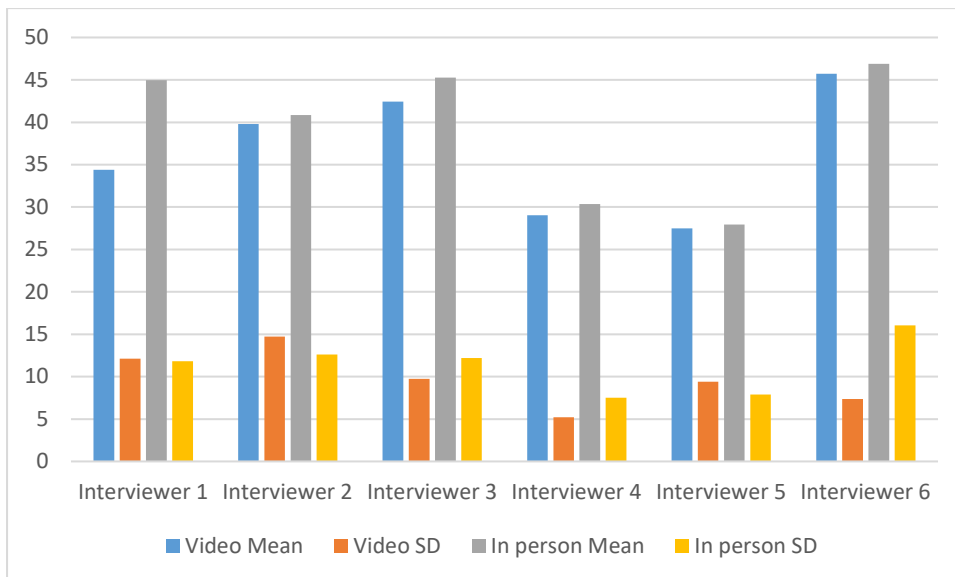


Figure A4: TTO duration per task in seconds, reported as mean and standard deviation across the 10 TTO tasks by interviewer and by mode

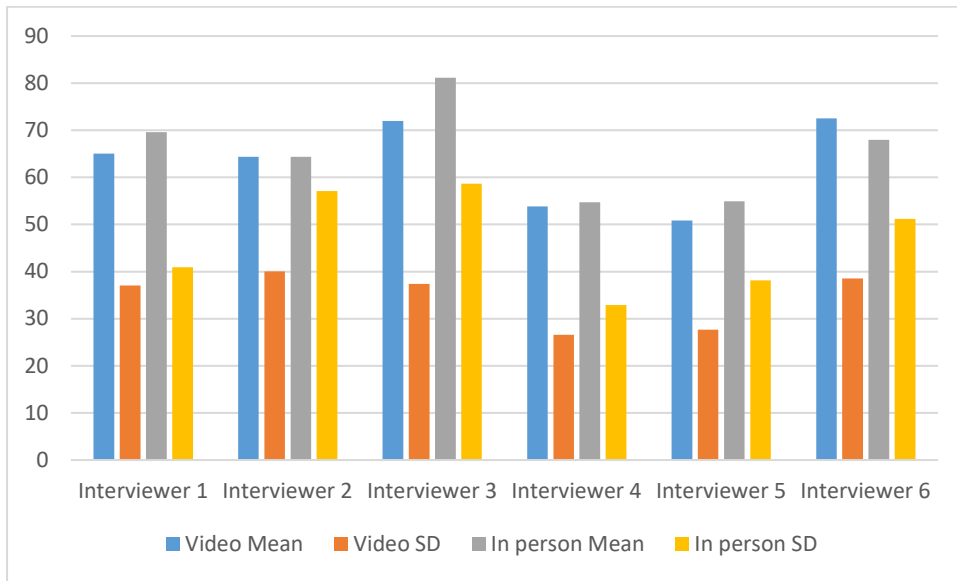


Figure A5: Feedback module duration in seconds, mean and standard deviation by interviewer and by mode

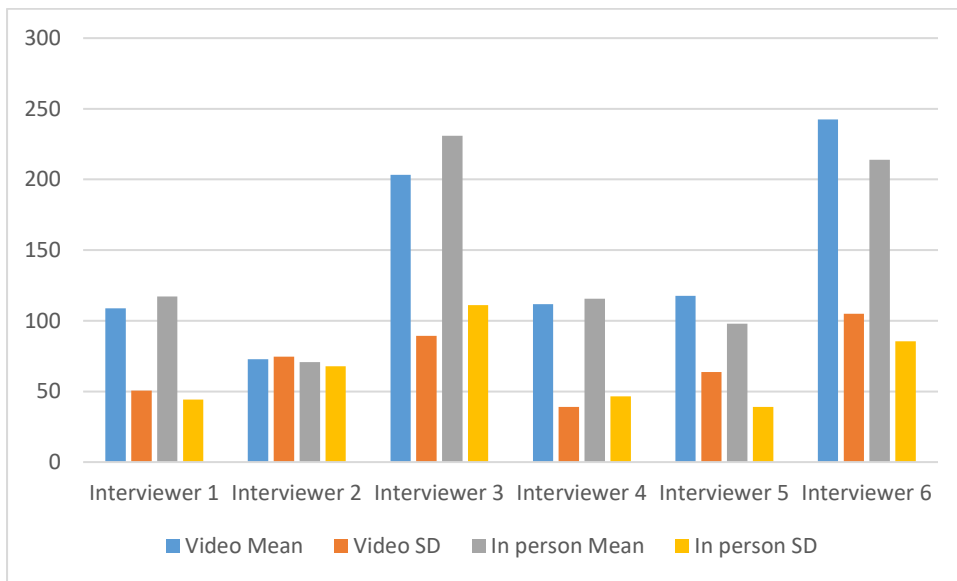
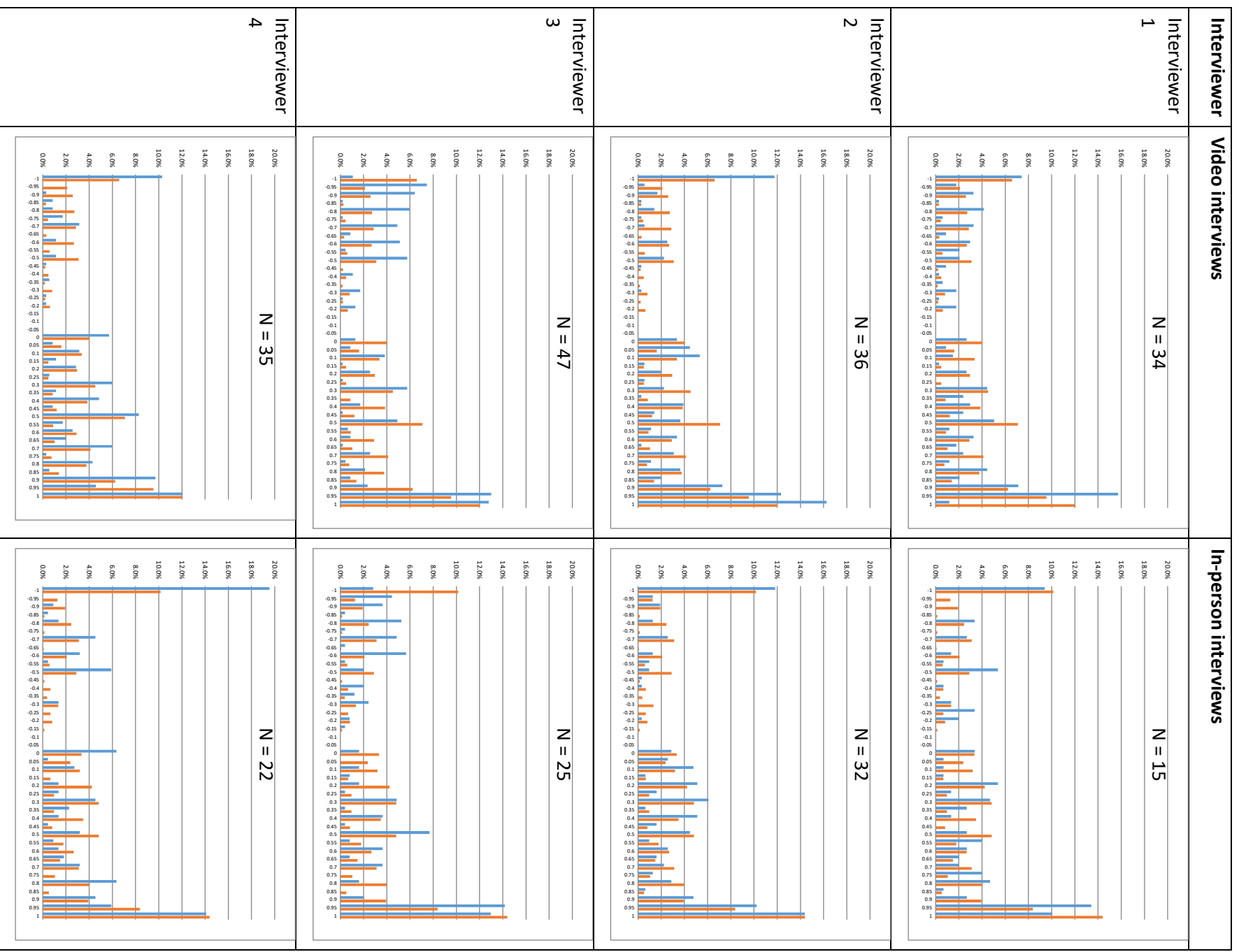


Figure A6: TTO distribution per interviewer per mode



Interviewer	Video interviews	In-person interviews
Interviewer 5	<p>N = 55</p>	<p>N = 26</p>
Interviewer 6	<p>N = 17</p>	<p>N = 16</p>

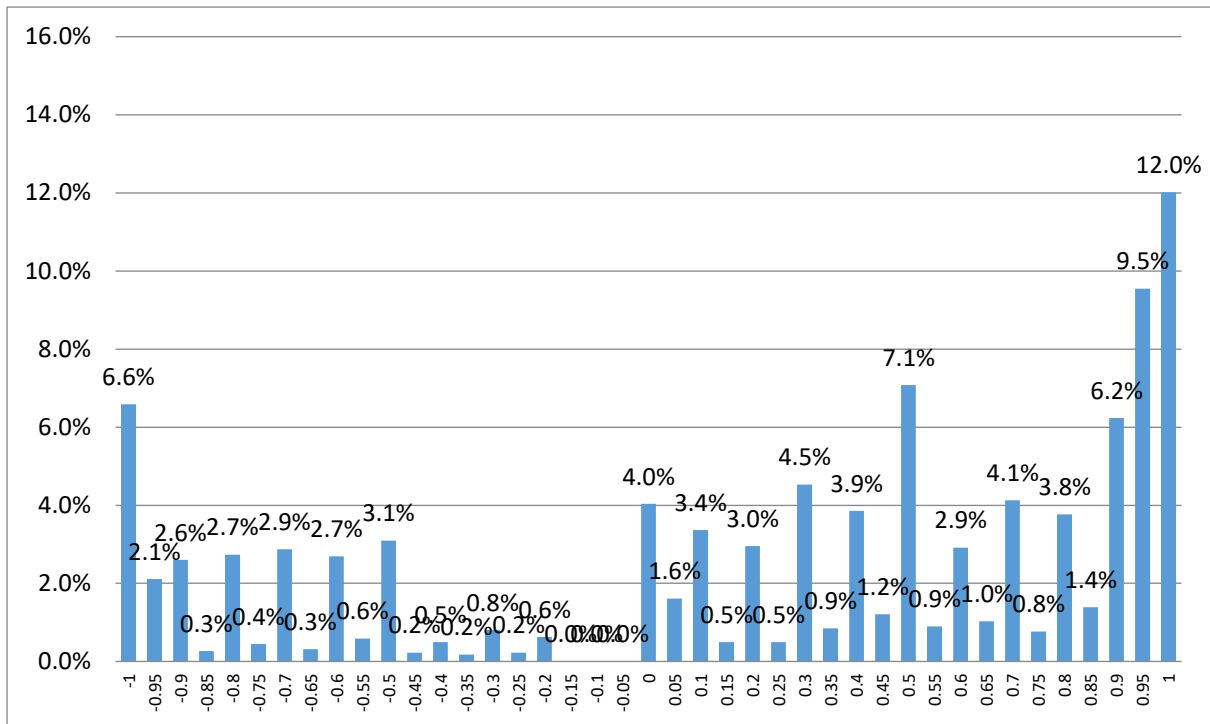
Individual interviewer distribution

Distribution across interviewers for the given mode

Section 3: Supplementary analyses on TTO data

Figure A7: Overall TTO value distribution by mode

Video interviews (n=244, 2440 observations)



In-person interviews (n=136, 1360 observations)

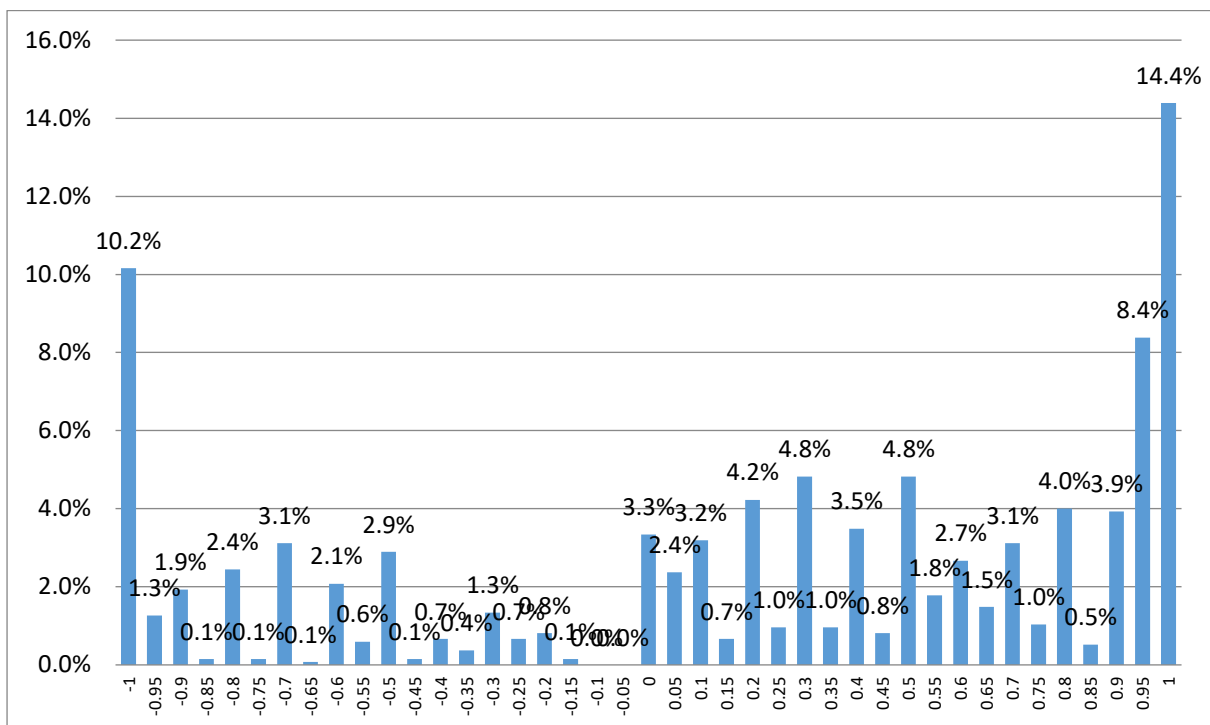


Table A5: Logical ordering within the sample health states.

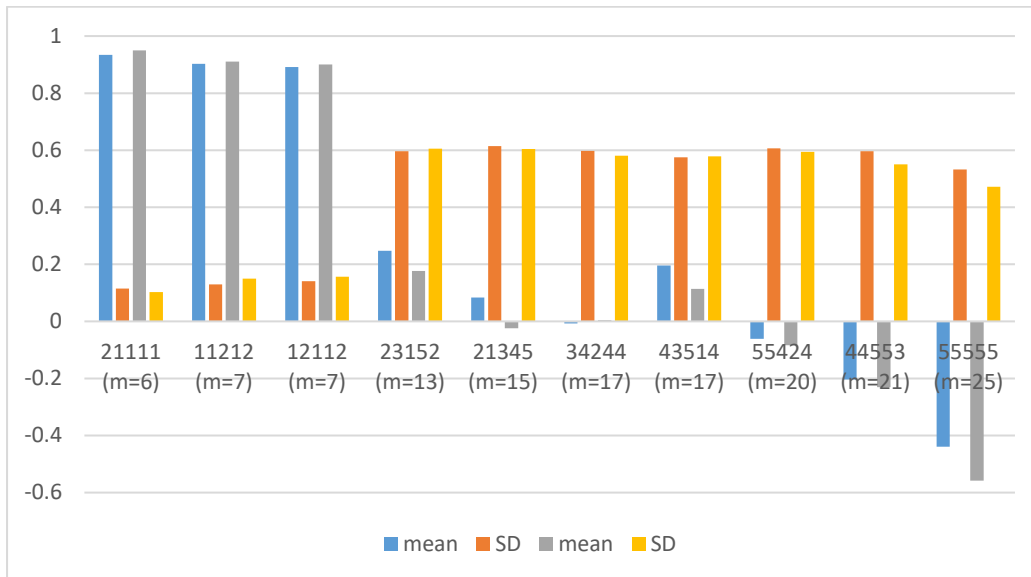
State	Logically worse than
12112	No other state
12112	No other state
44553	11212, 21111, 12112
21345	11212, 21111
34244	11212, 21111, 12112
23152	21111, 12112
43514	11212, 21111, 12112
55424	11212, 21111, 12112
21111	No other state
55555	All other states

Table A6: Number of moves taken to reach the TTO value for each state across mode

No. of moves	Video interviews, n=224		In-person interviews, n=136		P-value
	mean	SD	mean	SD	P-value (t test of mean)
11212	8.08	2.84	7.79	2.44	0.317
12112	7.82	2.30	7.85	3.28	0.923
21111	8.01	2.52	8.06	2.87	0.863
21345	6.35	2.52	6.48	2.57	0.650
23152	6.29	2.44	7.08	3.74	0.016
34244	7.12	3.92	7.05	3.13	0.862
43514	6.34	2.64	6.21	2.97	0.647
44553	6.70	3.03	6.82	2.43	0.696
55424	6.47	2.62	7.01	3.27	0.087
55555	7.63	2.97	8.21	3.04	0.076
All states					
Respondent completes all tasks within 3 moves	N	%	N	%	
	1	0.4%	0	0	

Figure A8: Mean TTO value (and SD), by health state ordered by misery score for each of the 10 states by mode, all responses and with those excluded using the feedback module

All responses



Responses excluding those flagged in the feedback module

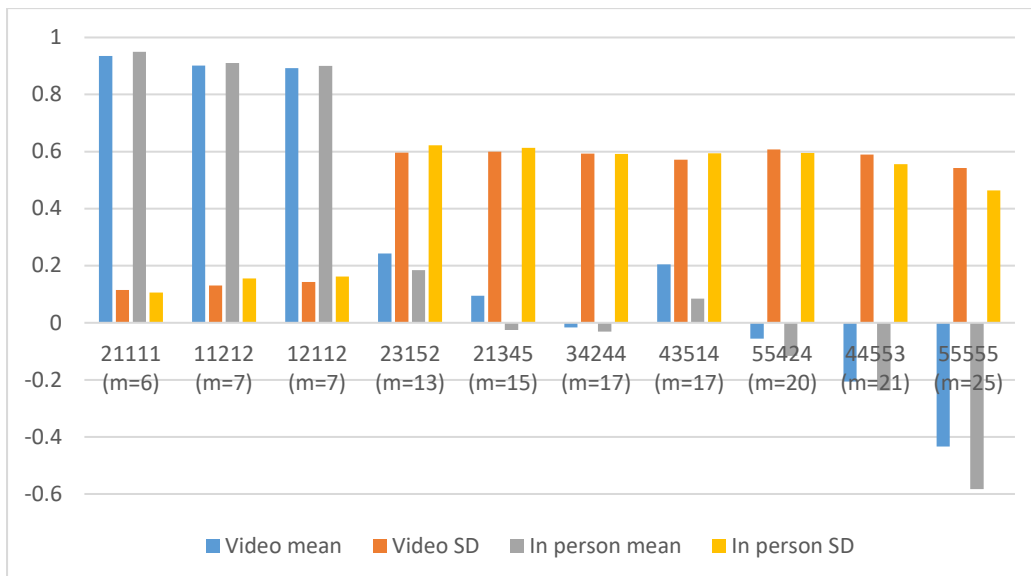


Table A7: Distribution of utilities, all responses

Health state	Health state & values	Video interviews, n=222 (%)	In-person interviews, n=138 (%)
11212	Mean	0.903	0.911
	SD	0.130	0.052
	Mode	0.95	1
	Median	0.95	0.95
	Range of values	0.3 to 1	0.05 to 1
	Value of 1 (non-trader)	29.5%	42.2%
	Value of 0.5	3.1%	1.5%
	Value of 0	0%	0%
	Value of -0.5	0%	0%
	Value of -1	0%	0%
	Proportion of values <0	0%	0%
12112	Mean	0.892	0.901
	SD	0.141	0.157
	Mode	0.95	1
	Median	0.95	0.95
	Range of values	0.3 to 1	0 to 1
	Value of 1 (non-trader)	25.5%	36.8%
	Value of 0.5	3.1%	2.2%
	Value of 0	0%	0.7%
	Value of -0.5	0%	0%
	Value of -1	0%	0%
	Proportion of values <0	0%	0%
21111	Mean	0.934	0.950
	SD	0.115	0.103
	Mode	1	1
	Median	0.95	1

Health state	Health state & values	Video interviews, n=222 (%)	In-person interviews, n=138 (%)
	Range of values	0.3 to 1	0.4 to 1
	Value of 1 (non-trader)	49.6%	61.8%
	Value of 0.5	1.8%	0%
	Value of 0	0%	0%
	Value of -0.5	0%	0%
	Value of -1	0%	0%
	Proportion of values <0	0%	0%
21345	Mean	0.084	-0.024
	SD	0.614	0.604
	Mode	0.5	-1
	Median	0.3	0.2
	Range of values	-1 to 1	-1 to 0.95
	Value of 1 (non-trader)	2.2%	0%
	Value of 0.5	13.0%	3.7%
	Value of 0	4.0%	4.4%
	Value of -0.5	0.9%	3.7%
	Value of -1	7.6%	12.5%
	Proportion of values <0	30.4%	39.7%
23152	Mean	0.247	0.177
	SD	0.596	0.605
	Mode	0.5	0.3 and -1
	Median	0.4	0.35
	Range of values	-1 to 1	-1 to 1
	Value of 1 (non-trader)	3.6%	0.7%
	Value of 0.5	10.3%	8.1%
	Value of 0	3.6%	1.5%
	Value of -0.5	2.7%	2.9%
	Value of -1	4.5%	10.3%

Health state	Health state & values	Video interviews, n=222 (%)	In-person interviews, n=138 (%)
	Proportion of values <0	21.9%	25.7%
34244	Mean	-0.007	0.004
	SD	0.597	0.581
	Mode	0.5	-1
	Median	0.175	0.2
	Range of values	-1 to 1	-1 to 0.95
	Value of 1 (non-trader)	1.3%	0%
	Value of 0.5	10.3%	10.3%
	Value of 0	4.9%	2.9%
	Value of -0.5	5.8%	2.2%
	Value of -1	8.5%	11.0%
	Proportion of values <0	38.8%	36.0%
43514	Mean	0.196	0.114
	SD	0.575	0.578
	Mode	0.5	0.3
	Median	0.375	0.3
	Range of values	-1 to 1	-1 to 1
	Value of 1 (non-trader)	4.0%	1.5%
	Value of 0.5	12.1%	9.6%
	Value of 0	3.1%	5.9%
	Value of -0.5	2.2%	3.7%
	Value of -1	5.8%	8.8%
	Proportion of values <0	25.0%	27.2%
44553	Mean	-0.204	-0.231
	SD	0.596	-0.083
	Mode	-1	-1
	Median	-0.1	-0.558
	Range of values	-1 to 1	-1 to 0.95

Health state	Health state & values	Video interviews, n=222 (%)	In-person interviews, n=138 (%)
	Value of 1 (non-trader)	1.3%	0%
	Value of 0.5	8.5%	6.6%
	Value of 0	7.6%	5.2%
	Value of -0.5	6.3%	6.6%
	Value of -1	9.8%	15.4%
	Proportion of values <0	50.0%	50.7%
55424	Mean	-0.061	-0.083
	SD	0.606	0.594
	Mode	-1	-1
	Median	0.075	0.05
	Range of values	-1 to 1	-1 to 0.95
	Value of 1 (non-trader)	1.8%	0%
	Value of 0.5	6.7%	5.9%
	Value of 0	6.7%	6.6%
	Value of -0.5	6.7%	5.2%
	Value of -1	8.9%	12.5%
	Proportion of values <0	40.6%	41.2%
55555	Mean	-0.439	-0.558
	SD	0.532	0.472
	Mode	-1	-1
	Median	-0.6	-0.7
	Range of values	-1 to 1	-1 to 0.95
	Value of 1 (non-trader)	0.9%	0%
	Value of 0.5	1.8%	0%
	Value of 0	10.3%	5.9%
	Value of -0.5	6.3%	4.4%
	Value of -1	20.5%	30.2%
	Proportion of values <0	64.7%	75.7%

Table A8: Percentage of times each state was flagged during the feedback module

State	Video interviews N=224, %	In-person interviews N=136, %
11212	2.68	7.35
12112	3.13	8.82
21111	4.91	5.88
21345	7.14	7.35
23152	4.46	10.29
34244	4.02	11.03
43514	6.25	11.76
44553	8.48	8.09
55424	8.04	9.56
55555	13.84	8.82

Table A9: Average (Mean & Median) TTO values and distribution of values for each health state by mode (excluded responses flagged by the feedback module)

	Video interviews						In-person interviews						Difference		Tests of significance	
	Mean	SD	Median	Lower quartile	Upper quartile	n	Mean	SD	Median	Lower quartile	Upper quartile	n	Difference in mean TTO values	Difference in median TTO values	Difference in mean TTO values ¹	Equality of standard deviations ²
11212	0.902	0.131	0.95	0.9	1.0	218	0.910	0.155	0.95	0.9	1.0	126	0.008	0	0.034	0.327
12112	0.892	0.143	0.95	0.9	1.0	217	0.900	0.162	0.95	0.9	1.0	124	0.009	0	0.039	0.401
21111	0.935	0.115	1	0.9	1.0	213	0.950	0.106	1	0.95	1.0	128	0.014	0	0.031	0.367
21345	0.095	0.600	0.3	-0.55	0.5	208	-0.025	0.613	0.15	-0.6	0.5	126	-0.120	0.15	0.066	0.464
23152	0.243	0.596	0.4	0	0.7	214	0.184	0.622	0.4	-0.2	0.7	122	-0.058	0	0.360	0.491
34244	-0.016	0.593	0.1	-0.6	0.5	215	-0.031	0.592	0.2	-0.6	0.5	121	-0.015	-0.1	0.708	0.969
43514	0.205	0.572	0.4	0	0.6	210	0.085	0.594	0.275	-0.5	0.5	120	-0.120	0.125	0.048	0.393
44553	-0.206	0.590	0	-0.8	0.3	205	-0.237	0.556	-0.05	-0.8	0.2	125	-0.031	0.05	0.620	0.248
55424	-0.055	0.608	0.1	-0.6	0.5	206	-0.116	0.595	0	-0.7	0.4	123	-0.061	0.1	0.309	0.743
55555	-0.434	0.542	-0.55	-0.95	0.05	193	-0.583	0.464	-0.75	-1	-0.125	124	-0.148	0.2	0.016	0.003

Notes: ¹P-value testing difference in means (Wilcoxon's rank-sum test). ²P-value testing equality of standard deviations using Levene's robust test statistic.

Section 4: Supplementary regression analyses on the TTO data

Table A10: Random effects Generalised Least Squares regression of all TTO observations

Variables	(1)	(2)	(3)	(4)
State 11212	-0.034 (0.228)	-0.034 (0.228)	-0.034 (0.228)	-0.031 (0.386)
State 12112	-0.045 (0.110)	-0.045 (0.110)	-0.045 (0.110)	-0.043 (0.233)
State 21345	-0.897*** (0.000)	-0.897*** (0.000)	-0.897*** (0.000)	-0.851*** (0.000)
State 23152	-0.719*** (0.000)	-0.719*** (0.000)	-0.719*** (0.000)	-0.687*** (0.000)
State 34244	-0.943*** (0.000)	-0.943*** (0.000)	-0.943*** (0.000)	-0.941*** (0.000)
State 43514	-0.775*** (0.000)	-0.775*** (0.000)	-0.775*** (0.000)	-0.739*** (0.000)
State 44553	-1.155*** (0.000)	-1.155*** (0.000)	-1.155*** (0.000)	-1.138*** (0.000)
State 55424	-1.010*** (0.000)	-1.010*** (0.000)	-1.010*** (0.000)	-0.996*** (0.000)
State 55555	-1.424*** (0.000)	-1.424*** (0.000)	-1.424*** (0.000)	-1.373*** (0.000)
Interview conducted in-person	-0.038 (0.296)	-0.031 (0.406)	-0.040 (0.280)	
State 11212 * interview conducted in person				0.006 (0.909)
State 12112 * interview conducted in person				0.007 (0.889)
State 21111 * interview conducted in person				0.014 (0.793)
State 21345 * interview conducted in person				-0.109** (0.043)
State 23152 * interview conducted in person				-0.072

Variables	(1)	(2)	(3)	(4)
				(0.182)
State 34244 * interview conducted in person				0.009
				(0.866)
State 43514 * interview conducted in person				-0.083
				(0.123)
State 44553 * interview conducted in person				-0.029
				(0.592)
State 55424 * interview conducted in person				-0.023
				(0.670)
State 55555 * interview conducted in person				-0.120**
				(0.025)
Male		0.077**	0.070*	0.070*
		(0.033)	(0.051)	(0.051)
Aged 41 to 64		-0.072*	-0.051	-0.051
		(0.086)	(0.219)	(0.219)
Aged 65 and over		-0.009	-0.014	-0.014
		(0.880)	(0.817)	(0.817)
Ethnicity of White British or White Other		0.018	0.022	0.022
		(0.700)	(0.646)	(0.646)
Day-to-day activities are limited a lot because of a health problem or disability		0.096	0.086	0.086
		(0.158)	(0.204)	(0.204)
Have experienced illness in you, yourself		-0.045	-0.050	-0.050
		(0.275)	(0.215)	(0.215)
Parent/guardian for a child or children aged under 18 years		0.048	0.065	0.065
		(0.267)	(0.135)	(0.135)
In employment or self-employment		0.027	0.021	0.021
		(0.510)	(0.612)	(0.612)
Married		0.066*	0.060	0.060
		(0.095)	(0.122)	(0.122)
IMD most deprived quintile		-0.086	-0.044	-0.044
		(0.196)	(0.513)	(0.513)
IMD least deprived quintile		-0.066	-0.050	-0.050

Variables	(1)	(2)	(3)	(4)
Rent (home) from a local authority		(0.104)	(0.218)	(0.218)
		-0.047	-0.041	-0.041
		(0.443)	(0.501)	(0.501)
No degree or equivalent professional qualification		0.060	0.051	0.051
		(0.268)	(0.344)	(0.344)
Interviewer 1			-0.131**	-0.131**
			(0.033)	(0.033)
Interviewer 2			-0.018	-0.018
			(0.743)	(0.743)
Interviewer 3			-0.197***	-0.197***
			(0.000)	(0.000)
Interviewer 4			-0.090	-0.090
			(0.122)	(0.122)
Interviewer 6			-0.034	-0.034
			(0.630)	(0.630)
Constant	0.955***	0.899***	0.970***	0.950***
	(0.000)	(0.000)	(0.000)	(0.000)
Observations	3,600	3,600	3,600	3,600
Number of participants	360	360	360	360

Notes: P-values in parentheses: *** p<0.01, ** p<0.05, * p<0.1. Baseline for model 4: Interviewed by video interview, health state 21111, female, aged 18 to 40 years, ethnicity is not white, no or some limitations in daily activities as a result of health, no experience of illness in yourself, not a parent or guardian of child aged under 18 years, not employed, not married, IMD middle three quintiles, do not rent a house from a local authority, have degree or equivalent professional qualification, interviewed by interviewer 5.

Table A11: Heteroscedastic Tobit regression of all TTO observations

	(1)	(2)	(3)	(4)
State 11212	-0.034*** (0.000)	-0.034*** (0.000)	-0.034*** (0.000)	-0.031*** (0.000)
State 12112	-0.045*** (0.000)	-0.045*** (0.000)	-0.045*** (0.000)	-0.043*** (0.000)
State 21345	-0.924*** (0.000)	-0.924*** (0.000)	-0.924*** (0.000)	-0.872*** (0.000)
State 23152	-0.736*** (0.000)	-0.736*** (0.000)	-0.736*** (0.000)	-0.698*** (0.000)
State 34244	-0.970*** (0.000)	-0.970*** (0.000)	-0.970*** (0.000)	-0.965*** (0.000)
State 43514	-0.792*** (0.000)	-0.792*** (0.000)	-0.792*** (0.000)	-0.752*** (0.000)
State 44553	-1.192*** (0.000)	-1.192*** (0.000)	-1.193*** (0.000)	-1.169*** (0.000)
State 55424	-1.041*** (0.000)	-1.041*** (0.000)	-1.041*** (0.000)	-1.023*** (0.000)
State 55555	-1.517*** (0.000)	-1.517*** (0.000)	-1.517*** (0.000)	-1.449*** (0.000)
Interview conducted in-person	0.004 (0.754)	0.000 (0.980)	-0.004 (0.753)	
State 11212 * interview conducted in person				-0.001 (0.942)
State 12112 * interview conducted in person				0.000 (0.988)
State 21111 * interview conducted in person				0.007 (0.531)
State 21345 * interview conducted in person				-0.132* (0.070)
State 23152 * interview conducted in person				-0.094 (0.180)

	(1)	(2)	(3)	(4)
State 34244 * interview conducted in person				-0.005 (0.940)
State 43514 * interview conducted in person				-0.098 (0.146)
State 44553 * interview conducted in person				-0.055 (0.433)
State 55424 * interview conducted in person				-0.042 (0.566)
State 55555 * interview conducted in person				-0.175** (0.014)
Male		0.031** (0.013)	0.034*** (0.006)	0.034*** (0.006)
Aged 41 to 64		0.003 (0.837)	0.001 (0.944)	0.001 (0.946)
Aged 65 and over		0.010 (0.646)	0.010 (0.663)	0.010 (0.664)
Ethnicity of White British or White Other		0.015 (0.311)	0.014 (0.318)	0.014 (0.318)
Day-to-day activities are limited a lot because of a health problem or disability		0.030 (0.278)	0.033 (0.217)	0.034 (0.217)
Have experienced illness in you, yourself		-0.024 (0.149)	-0.022 (0.167)	-0.022 (0.166)
Parent/guardian for a child or children aged under 18 years		0.013 (0.370)	0.011 (0.421)	0.011 (0.420)
In employment or self-employment		0.017 (0.252)	0.024 (0.105)	0.024 (0.106)
Married		0.018 (0.207)	0.018 (0.211)	0.018 (0.210)
IMD most deprived quintile		0.021 (0.155)	0.016 (0.281)	0.016 (0.283)
IMD least deprived quintile		-0.009 (0.518)	-0.009 (0.486)	-0.009 (0.485)

	(1)	(2)	(3)	(4)
Rent (home) from a local authority		-0.045*	-0.042*	-0.042*
		(0.052)	(0.083)	(0.083)
No degree or equivalent professional qualification		0.003	0.006	0.006
		(0.855)	(0.738)	(0.736)
Interviewer 1			-0.037	-0.037
			(0.169)	(0.169)
Interviewer 2			0.035*	0.034*
			(0.095)	(0.096)
Interviewer 3			0.033**	0.033**
			(0.042)	(0.042)
Interviewer 4			0.018	0.018
			(0.372)	(0.374)
Interviewer 6			0.035*	0.035*
			(0.084)	(0.084)
Constant	0.939***	0.898***	0.882***	0.878***
	(0.000)	(0.000)	(0.000)	(0.000)
Observations	3,600	3,600	3,600	3,600

Notes: P-values in parentheses: *** p<0.01, ** p<0.05, * p<0.1. Baseline for model 4: Interviewed by video interview, health state 21111, female, aged 18 to 40 years, ethnicity is not white, no or some limitations in daily activities as a result of health, no experience of illness in yourself, not a parent or guardian of child aged under 18 years, not employed, not married, IMD middle three quintiles, do not rent a house from a local authority, have degree or equivalent professional qualification, interviewed by interviewer 5.

Table A12: Ordinary least squares regressions reported separately for each health state

Variables	Health state									
	11212	12112	21111	21345	23152	34244	43515	44553	55424	55555
Interview conducted in-person	0.001 (0.945)	0.003 (0.864)	0.010 (0.402)	-0.092 (0.170)	-0.065 (0.313)	0.010 (0.881)	-0.057 (0.375)	-0.010 (0.881)	-0.004 (0.954)	-0.104* (0.066)
Male	0.009 (0.526)	0.025 (0.114)	0.031*** (0.008)	0.151** (0.021)	0.113* (0.073)	0.176*** (0.005)	0.060 (0.340)	0.075 (0.225)	0.050 (0.445)	0.078 (0.159)
Aged 41 to 64	0.014 (0.407)	0.023 (0.205)	0.009 (0.515)	- (0.016)	-0.186** (0.011)	-0.079 (0.279)	-0.069 (0.340)	-0.138* (0.054)	-0.005 (0.950)	-0.103 (0.105)
Aged 65 and over	0.018 (0.458)	0.025 (0.345)	0.003 (0.875)	-0.102 (0.347)	-0.099 (0.347)	-0.146 (0.169)	-0.041 (0.697)	-0.056 (0.586)	0.221** (0.043)	0.086 (0.351)
Ethnicity of White British or White Other	0.036* (0.067)	-0.004 (0.860)	0.012 (0.441)	-0.043 (0.615)	0.162* (0.052)	0.101 (0.226)	-0.083 (0.317)	0.070 (0.392)	-0.071 (0.408)	0.003 (0.965)
Day-to-day activities are limited a lot because of a health problem or disability	0.023 (0.402)	0.029 (0.327)	0.021 (0.346)	0.091 (0.459)	0.142 (0.232)	0.087 (0.464)	0.062 (0.599)	0.195* (0.095)	0.201 (0.101)	0.107 (0.305)
Have experienced illness in you, yourself	-0.016 (0.330)	-0.020 (0.270)	-0.023* (0.085)	-0.122* (0.099)	-0.097 (0.172)	-0.046 (0.525)	-0.047 (0.514)	-0.043 (0.537)	-0.052 (0.483)	0.019 (0.760)
Parent/guardian for a child or children aged under 18 years	0.001 (0.958)	0.005 (0.785)	0.010 (0.462)	0.034 (0.663)	0.136* (0.075)	0.019 (0.803)	0.051 (0.506)	0.119 (0.113)	0.053 (0.498)	0.056 (0.403)
In employment or self-employment	0.020 (0.236)	0.029 (0.109)	0.006 (0.650)	0.010 (0.888)	0.011 (0.883)	-0.057 (0.436)	-0.020 (0.787)	0.029 (0.682)	0.120 (0.109)	0.123* (0.052)
Married	0.016 (0.321)	0.003 (0.850)	0.011 (0.374)	0.164** (0.021)	0.214*** (0.002)	0.092 (0.185)	0.045 (0.511)	0.055 (0.414)	0.023 (0.745)	0.035 (0.564)
IMD most deprived quintile	0.040 (0.146)	0.042 (0.148)	0.026 (0.239)	-0.084 (0.483)	0.004 (0.970)	-0.175 (0.132)	-0.080 (0.487)	-0.185 (0.103)	- (0.027)	-0.177* (0.080)
IMD least deprived quintile	-0.006 (0.712)	-0.006 (0.722)	0.006 (0.659)	-0.104 (0.154)	-0.104 (0.143)	-0.147** (0.040)	-0.074 (0.296)	-0.149** (0.033)	-0.022 (0.765)	-0.053 (0.391)

Variables	Health state									
	11212	12112	21111	21345	23152	34244	43515	44553	55424	55555
Rent (home) from a local authority	-0.018	-	-0.049**	-0.138	-0.096	-0.077	0.033	-0.068	-0.008	0.021
	(0.475)	0.069***	(0.015)	(0.210)	(0.366)	(0.472)	(0.757)	(0.519)	(0.946)	(0.819)
No degree or equivalent professional qualification	0.006	-0.013	-0.009	0.105	0.167*	0.101	-0.009	0.178*	0.071	0.007
	(0.772)	(0.597)	(0.627)	(0.285)	(0.079)	(0.292)	(0.921)	(0.058)	(0.470)	(0.937)
Constant	0.846***	0.864***	0.904***	0.098	0.034	-0.068	0.269***	-	-0.145	-
	(0.000)	(0.000)	(0.000)	(0.319)	(0.721)	(0.477)	(0.005)	0.266***	(0.143)	0.545***
Observations	360	360	360	360	360	360	360	360	360	360

Notes: P-values in parentheses: *** p<0.01, ** p<0.05, * p<0.1. Baseline: Interviewed by video interview, female, aged 18 to 40 years, ethnicity is not white, no or some limitations in daily activities as a result of health, no experience of illness in yourself, not a parent or guardian of child aged under 18 years, not employed, not married, IMD middle three quintiles, do not rent a house from a local authority, have degree or equivalent professional qualification.

Table A13: Tobit regressions, reported separately for each health state

Variables	Health state									
	11212	12112	21111	21345	23152	34244	43515	44553	55424	55555
Interview conducted in-person	0.001 (0.943)	0.003 (0.861)	0.010 (0.392)	-0.106 (0.141)	-0.079 (0.246)	0.003 (0.967)	-0.064 (0.345)	-0.028 (0.692)	-0.011 (0.881)	-0.146** (0.042)
Male	0.009 (0.517)	0.025 (0.107)	0.031*** (0.007)	0.176** (0.012)	0.126* (0.055)	0.193*** (0.005)	0.071 (0.282)	0.096 (0.160)	0.059 (0.405)	0.108 (0.119)
Aged 41 to 64	0.014 (0.397)	0.023 (0.195)	0.009 (0.506)	- (0.010)	- (0.007)	-0.095 (0.229)	-0.082 (0.281)	-0.151* (0.056)	-0.010 (0.902)	-0.134* (0.097)
Aged 65 and over	0.018 (0.448)	0.025 (0.335)	0.003 (0.872)	-0.106 (0.365)	-0.109 (0.319)	-0.155 (0.175)	-0.048 (0.666)	-0.063 (0.581)	0.239** (0.044)	0.115 (0.323)
Ethnicity of White British or White Other	0.036* (0.061)	-0.004 (0.857)	0.012 (0.432)	-0.036 (0.698)	0.172** (0.049)	0.114 (0.205)	-0.078 (0.368)	0.076 (0.400)	-0.096 (0.303)	-0.010 (0.912)
Day-to-day activities are limited a lot because of a health problem or disability	0.023 (0.392)	0.029 (0.317)	0.021 (0.336)	0.065 (0.621)	0.120 (0.333)	0.067 (0.605)	0.038 (0.758)	0.179 (0.165)	0.165 (0.216)	0.101 (0.442)
Have experienced illness in you, yourself	-0.016 (0.320)	-0.020 (0.260)	-0.023* (0.079)	-0.137* (0.085)	-0.095 (0.201)	-0.048 (0.531)	-0.054 (0.467)	-0.063 (0.420)	-0.052 (0.512)	0.015 (0.854)
Parent/guardian for a child or children aged under 18 years	0.001 (0.957)	0.005 (0.781)	0.010 (0.453)	0.053 (0.529)	0.151* (0.058)	0.029 (0.724)	0.059 (0.460)	0.148* (0.073)	0.064 (0.455)	0.096 (0.253)
In employment or self-employment	0.020 (0.226)	0.029 (0.101)	0.006 (0.643)	0.004 (0.961)	0.006 (0.934)	-0.065 (0.406)	-0.029 (0.699)	0.024 (0.761)	0.123 (0.128)	0.151* (0.058)
Married	0.016 (0.310)	0.003 (0.847)	0.011 (0.364)	0.183** (0.017)	0.233*** (0.001)	0.102 (0.170)	0.056 (0.438)	0.068 (0.362)	0.042 (0.588)	0.044 (0.560)
IMD most deprived quintile	0.040 (0.138)	0.042 (0.139)	0.026 (0.229)	-0.068 (0.596)	0.025 (0.833)	-0.161 (0.195)	-0.072 (0.549)	-0.180 (0.148)	- (0.044)	-0.190 (0.135)
IMD least deprived quintile	-0.006 (0.706)	-0.006 (0.717)	0.006 (0.652)	-0.113 (0.150)	-0.105 (0.158)	-0.152** (0.048)	-0.075 (0.315)	-0.178** (0.021)	-0.027 (0.736)	-0.068 (0.386)
Rent (home) from a local authority	-0.018 (0.706)	- (0.717)	-0.049** (0.652)	-0.120 (0.150)	-0.088 (0.158)	-0.059 (0.048)	0.052 (0.315)	-0.056 (0.021)	-0.013 (0.736)	0.016 (0.386)

Variables	Health state									
	11212	12112	21111	21345	23152	34244	43515	44553	55424	55555
		0.069***								
No degree or equivalent professional qualification	(0.466) 0.006	(0.008) -0.013	(0.013) -0.009	(0.308) 0.119	(0.427) 0.171*	(0.607) 0.112	(0.643) -0.005	(0.624) 0.196*	(0.911) 0.096	(0.891) 0.009
Constant	(0.767) 0.846***	(0.589) 0.864***	(0.620) 0.904***	(0.257) 0.063	(0.085) 0.004	(0.273) -0.106	(0.958) 0.252**	(0.056) - 0.304***	(0.366) -0.173	(0.932) - 0.641***
Observations	(0.000) 360	(0.000) 360	(0.000) 360	(0.553) 360	(0.966) 360	(0.305) 360	(0.012) 360	(0.003) 360	(0.107) 360	(0.000) 360

Notes: P-values in parentheses: *** p<0.01, ** p<0.05, * p<0.1. Baseline: Interviewed by video interview, female, aged 18 to 40 years, ethnicity is not white, no or some limitations in daily activities as a result of health, no experience of illness in yourself, not a parent or guardian of child aged under 18 years, not employed, not married, IMD middle three quintiles, do not rent a house from a local authority, have degree or equivalent professional qualification.

Table A14: Ordinary least squares regressions reported separately for each health state, controlling for interviewer effects

Variables	Health state									
	11212	12112	21111	21345	23152	34244	43515	44553	55424	55555
Interview conducted in-person	-0.005	-0.001	0.007	-0.100	-0.082	-0.007	-0.060	-0.025	-0.007	-0.119**
	(0.723)	(0.954)	(0.535)	(0.130)	(0.206)	(0.918)	(0.359)	(0.683)	(0.923)	(0.033)
Male	0.015	0.030*	0.036***	0.129**	0.101	0.162**	0.043	0.066	0.047	0.073
	(0.318)	(0.057)	(0.002)	(0.046)	(0.108)	(0.010)	(0.503)	(0.275)	(0.473)	(0.181)
Aged 41 to 64	0.013	0.017	0.003	-0.143*	-0.159**	-0.042	-0.061	-0.086	0.013	-0.063
	(0.447)	(0.351)	(0.832)	(0.054)	(0.029)	(0.562)	(0.404)	(0.220)	(0.869)	(0.314)
Aged 65 and over	0.017	0.025	0.004	-0.112	-0.114	-0.157	-0.047	-0.063	0.229**	0.079
	(0.478)	(0.348)	(0.829)	(0.295)	(0.274)	(0.133)	(0.658)	(0.532)	(0.037)	(0.382)
Ethnicity of White British or White Other	0.034*	-0.005	0.010	-0.033	0.172**	0.110	-0.074	0.073	-0.079	0.007
	(0.077)	(0.812)	(0.516)	(0.698)	(0.037)	(0.179)	(0.372)	(0.357)	(0.362)	(0.925)
Day-to-day activities are limited a lot because of a health problem or disability	0.027	0.036	0.027	0.059	0.120	0.069	0.039	0.183	0.195	0.102
	(0.329)	(0.224)	(0.211)	(0.628)	(0.309)	(0.560)	(0.747)	(0.108)	(0.117)	(0.317)
Have experienced illness in you, yourself	-0.016	-0.016	-0.021	-0.131*	-0.099	-0.053	-0.045	-0.062	-0.067	0.007
	(0.344)	(0.356)	(0.112)	(0.072)	(0.163)	(0.458)	(0.534)	(0.364)	(0.369)	(0.909)
Parent/guardian for a child or children aged under 18 years	-0.000	0.000	0.007	0.062	0.149*	0.047	0.056	0.162**	0.080	0.087
	(0.991)	(0.983)	(0.600)	(0.430)	(0.052)	(0.535)	(0.467)	(0.028)	(0.317)	(0.189)
In employment or self-employment	0.029*	0.037**	0.014	-0.003	0.007	-0.070	-0.007	-0.008	0.121	0.091
	(0.089)	(0.045)	(0.284)	(0.967)	(0.922)	(0.337)	(0.922)	(0.907)	(0.113)	(0.150)
Married	0.016	0.004	0.012	0.153**	0.205***	0.080	0.038	0.045	0.019	0.027
	(0.319)	(0.831)	(0.348)	(0.028)	(0.003)	(0.239)	(0.575)	(0.492)	(0.787)	(0.650)
IMD most deprived quintile	0.036	0.030	0.013	-0.010	0.064	-0.097	-0.072	-0.072	-0.242**	-0.087

Variables	Health state									
	11212	12112	21111	21345	23152	34244	43515	44553	55424	55555
	(0.182)	(0.300)	(0.558)	(0.934)	(0.586)	(0.405)	(0.544)	(0.522)	(0.049)	(0.392)
IMD least deprived quintile	-0.006	-0.010	0.003	-0.077	-0.084	-0.117*	-0.068	-0.108	-0.007	-0.021
	(0.697)	(0.576)	(0.843)	(0.288)	(0.234)	(0.096)	(0.340)	(0.111)	(0.929)	(0.726)
Rent (home) from a local authority	-0.013	-0.069**	-0.047**	-0.126	-0.083	-0.068	0.048	-0.068	0.001	0.018
	(0.588)	(0.010)	(0.016)	(0.247)	(0.433)	(0.521)	(0.655)	(0.505)	(0.990)	(0.843)
No degree or equivalent professional qualification	0.011	-0.007	-0.005	0.082	0.158*	0.082	-0.024	0.159*	0.059	-0.005
	(0.608)	(0.755)	(0.789)	(0.399)	(0.095)	(0.382)	(0.804)	(0.081)	(0.553)	(0.947)
Interviewer 1	-0.052**	-0.012	-0.016	-0.230**	-0.225**	-0.235**	-0.203*	-0.133	-0.125	-0.083
	(0.041)	(0.664)	(0.431)	(0.038)	(0.038)	(0.029)	(0.063)	(0.200)	(0.270)	(0.373)
Interviewer 2	0.056**	0.041*	0.035*	-0.125	-0.028	-0.059	-0.134	0.008	-0.005	0.027
	(0.014)	(0.092)	(0.054)	(0.212)	(0.778)	(0.545)	(0.177)	(0.932)	(0.960)	(0.749)
Interviewer 3	0.040*	0.071***	0.066***	-0.409***	-0.271***	-0.378***	-0.170*	-0.446***	-0.148	-0.331***
	(0.079)	(0.004)	(0.000)	(0.000)	(0.005)	(0.000)	(0.082)	(0.000)	(0.143)	(0.000)
Interviewer 4	0.015	0.038	0.044**	-0.237**	-0.206**	-0.178*	-0.150	-0.136	0.003	-0.093
	(0.540)	(0.135)	(0.021)	(0.024)	(0.044)	(0.080)	(0.146)	(0.166)	(0.974)	(0.293)
Interviewer 6	0.034	0.057*	0.042*	-0.127	-0.009	-0.031	-0.056	-0.090	-0.138	-0.020
	(0.235)	(0.063)	(0.066)	(0.313)	(0.940)	(0.800)	(0.651)	(0.447)	(0.284)	(0.853)
Constant	0.825***	0.831***	0.875***	0.274**	0.146	0.070	0.379***	-0.142	-0.093	-0.464***
	(0.000)	(0.000)	(0.000)	(0.016)	(0.186)	(0.527)	(0.001)	(0.183)	(0.424)	(0.000)
Observations	360	360	360	360	360	360	360	360	360	360
R-squared	0.107	0.093	0.133	0.126	0.134	0.111	0.041	0.136	0.050	0.111

Notes: P-values in parentheses: *** p<0.01, ** p<0.05, * p<0.1. Baseline: Interviewed by video interview, female, aged 18 to 40 years, ethnicity is not white, no or some limitations in daily activities as a result of health, no experience of illness in yourself, not a parent or guardian of child aged under 18 years, not employed, not married, IMD middle three quintiles, do not rent a house from a local authority, have degree or equivalent professional qualification, interviewed by interviewer 5.

Table A15: Tobit regressions reported separately for each health state, controlling for interviewer effects

Variables	Health state									
	11212	12112	21111	21345	23152	34244	43515	44553	55424	55555
Interview conducted in-person	-0.005	-0.001	0.007	-0.113	-0.094	-0.013	-0.066	-0.042	-0.011	-0.156**
	(0.715)	(0.952)	(0.523)	(0.111)	(0.160)	(0.846)	(0.331)	(0.537)	(0.878)	(0.027)
Male	0.015	0.030*	0.036***	0.151**	0.112*	0.175***	0.052	0.081	0.055	0.100
	(0.305)	(0.051)	(0.002)	(0.028)	(0.086)	(0.009)	(0.434)	(0.219)	(0.437)	(0.143)
Aged 41 to 64	0.013	0.017	0.003	-0.172**	-0.181**	-0.060	-0.077	-0.101	0.003	-0.104
	(0.434)	(0.337)	(0.827)	(0.031)	(0.017)	(0.442)	(0.316)	(0.189)	(0.970)	(0.191)
Aged 65 and over	0.017	0.025	0.004	-0.117	-0.126	-0.168	-0.056	-0.071	0.246**	0.098
	(0.466)	(0.334)	(0.824)	(0.306)	(0.245)	(0.131)	(0.611)	(0.521)	(0.037)	(0.388)
Ethnicity of White British or White Other	0.034*	-0.005	0.010	-0.024	0.183**	0.125	-0.067	0.081	-0.102	-0.000
	(0.069)	(0.806)	(0.504)	(0.788)	(0.033)	(0.154)	(0.436)	(0.354)	(0.274)	(0.997)
Day-to-day activities are limited a lot because of a health problem or disability	0.027	0.036	0.027	0.033	0.096	0.047	0.014	0.165	0.157	0.092
	(0.315)	(0.211)	(0.198)	(0.800)	(0.433)	(0.712)	(0.912)	(0.187)	(0.241)	(0.478)
Have experienced illness in you, yourself	-0.016	-0.016	-0.021	-0.145*	-0.095	-0.053	-0.050	-0.077	-0.065	0.011
	(0.330)	(0.342)	(0.102)	(0.064)	(0.195)	(0.486)	(0.508)	(0.303)	(0.418)	(0.887)
Parent/guardian for a child or children aged under 18 years	-0.000	0.000	0.007	0.076	0.160**	0.052	0.060	0.183**	0.084	0.105
	(0.990)	(0.982)	(0.589)	(0.363)	(0.044)	(0.523)	(0.455)	(0.023)	(0.328)	(0.206)
In employment or self-employment	0.029*	0.037**	0.014	-0.005	0.005	-0.074	-0.014	-0.006	0.128	0.125
	(0.080)	(0.039)	(0.270)	(0.950)	(0.942)	(0.342)	(0.851)	(0.942)	(0.121)	(0.116)
Married	0.016	0.004	0.012	0.171**	0.224***	0.090	0.049	0.055	0.039	0.038

Variables	Health state									
	11212	12112	21111	21345	23152	34244	43515	44553	55424	55555
	(0.306)	(0.826)	(0.334)	(0.022)	(0.002)	(0.215)	(0.490)	(0.447)	(0.616)	(0.605)
IMD most deprived quintile	0.036	0.030	0.013	0.001	0.080	-0.088	-0.069	-0.075	-0.248*	-0.119
	(0.170)	(0.286)	(0.547)	(0.997)	(0.506)	(0.477)	(0.576)	(0.539)	(0.060)	(0.350)
IMD least deprived quintile	-0.006	-0.010	0.003	-0.088	-0.087	-0.125*	-0.071	-0.140*	-0.016	-0.048
	(0.688)	(0.565)	(0.838)	(0.255)	(0.232)	(0.098)	(0.340)	(0.061)	(0.841)	(0.536)
Rent (home) from a local authority	-0.013	-	-0.047**	-0.107	-0.074	-0.048	0.067	-0.054	-0.003	0.016
	(0.577)	(0.008)	(0.013)	(0.356)	(0.499)	(0.667)	(0.545)	(0.625)	(0.977)	(0.887)
No degree or equivalent professional qualification	0.011	-0.007	-0.005	0.096	0.162*	0.095	-0.019	0.177*	0.085	0.005
	(0.597)	(0.748)	(0.783)	(0.352)	(0.098)	(0.346)	(0.851)	(0.074)	(0.422)	(0.961)
Interviewer 1	-0.052**	-0.012	-0.016	-0.242**	-0.234**	-0.251**	-0.209*	-0.156	-0.117	-0.063
	(0.035)	(0.655)	(0.418)	(0.040)	(0.037)	(0.029)	(0.066)	(0.171)	(0.338)	(0.591)
Interviewer 2	0.056**	0.041*	0.035**	-0.140	-0.041	-0.068	-0.146	-0.016	-0.016	0.007
	(0.012)	(0.083)	(0.048)	(0.193)	(0.689)	(0.513)	(0.159)	(0.880)	(0.882)	(0.946)
Interviewer 3	0.040*	0.071***	0.066***	-	-	-	-0.157	-	-0.114	-0.230**
	(0.071)	(0.003)	(0.000)	(0.000)	(0.008)	(0.000)	(0.121)	(0.000)	(0.294)	(0.028)
Interviewer 4	0.015	0.038	0.044**	-0.266**	-0.232**	-0.209*	-0.167	-0.176	-0.010	-0.158
	(0.529)	(0.124)	(0.018)	(0.017)	(0.029)	(0.054)	(0.120)	(0.102)	(0.931)	(0.163)
Interviewer 6	0.034	0.057*	0.042*	-0.137	-0.014	-0.028	-0.044	-0.086	-0.137	0.013
	(0.222)	(0.056)	(0.058)	(0.305)	(0.910)	(0.829)	(0.733)	(0.503)	(0.321)	(0.919)
Constant	0.825***	0.831***	0.875***	0.249**	0.125	0.039	0.364***	-0.165	-0.123	-
	(0.000)	(0.000)	(0.000)	(0.039)	(0.274)	(0.736)	(0.002)	(0.155)	(0.323)	(0.000)
Observations	360	360	360	360	360	360	360	360	360	360

Notes: P-values in parentheses: *** $p < 0.01$, ** $p < 0.05$, * $p < 0.1$. Baseline: Interviewed by video interview, female, aged 18 to 40 years, ethnicity is not white, no or some limitations in daily activities as a result of health, no experience of illness in yourself, not a parent or guardian of child aged under 18 years, not employed, not married, IMD middle three quintiles, do not rent a house from a local authority, have degree or equivalent professional qualification, interviewed by interviewer 5.

Table A16: Tobit regressions with only mode and interviewer effects as dummies

Variables	Health state									
	11212	12112	21111	21345	23152	34244	43515	44553	55424	55555
Interview conducted in-person	0.001	0.005	0.013	-0.125*	-0.095	-0.007	-0.089	-0.056	-0.035	-0.175**
	(0.920)	(0.742)	(0.283)	(0.079)	(0.167)	(0.923)	(0.185)	(0.415)	(0.634)	(0.013)
Interviewer 1	-0.048**	-0.012	-0.020	-0.267**	-0.246**	-0.290**	-0.207*	-0.166	-0.110	-0.050
	(0.046)	(0.638)	(0.309)	(0.023)	(0.030)	(0.011)	(0.061)	(0.140)	(0.355)	(0.664)
Interviewer 2	0.051**	0.035	0.027	-0.180*	-0.077	-0.117	-0.153	-0.047	-0.015	0.009
	(0.021)	(0.148)	(0.132)	(0.093)	(0.456)	(0.261)	(0.130)	(0.647)	(0.891)	(0.935)
Interviewer 3	0.044**	0.071***	0.065***	-0.448***	-0.283***	-0.407***	-0.181*	-0.459***	-0.156	-0.274***
	(0.041)	(0.003)	(0.000)	(0.000)	(0.005)	(0.000)	(0.067)	(0.000)	(0.143)	(0.007)
Interviewer 4	0.018	0.033	0.036*	-0.304***	-0.255**	-0.237**	-0.186*	-0.209*	-0.060	-0.194*
	(0.443)	(0.182)	(0.052)	(0.007)	(0.019)	(0.030)	(0.078)	(0.054)	(0.599)	(0.083)
Interviewer 6	0.034	0.056*	0.041*	-0.126	-0.014	-0.057	-0.028	-0.095	-0.118	0.021
	(0.218)	(0.060)	(0.067)	(0.348)	(0.916)	(0.661)	(0.824)	(0.457)	(0.389)	(0.874)
Constant	0.888***	0.864***	0.911***	0.284***	0.387***	0.160**	0.307***	-0.063	-0.017	-0.417***
	(0.000)	(0.000)	(0.000)	(0.000)	(0.000)	(0.029)	(0.000)	(0.382)	(0.821)	(0.000)
Observations	360	360	360	360	360	360	360	360	360	360

Notes: P-values in parentheses: *** p<0.01, ** p<0.05, * p<0.1. Baseline: Interviewed by video interview, by interviewer 5.

Table A17: Tobit regressions with only mode and interviewer effects as dummies

Variables	Health state									
	11212	12112	21111	21345	23152	34244	43515	44553	55424	55555
Interview conducted in-person	0.020 (0.527)	0.003 (0.936)	0.043* (0.088)	-0.211 (0.168)	-0.145 (0.326)	-0.070 (0.632)	-0.215 (0.137)	-0.195 (0.183)	-0.342** (0.029)	-0.249* (0.096)
Interviewer 1	-0.044 (0.135)	-0.016 (0.610)	-0.019 (0.424)	-0.337** (0.016)	-0.291** (0.031)	-0.346** (0.011)	-0.260** (0.049)	-0.315** (0.019)	-0.238* (0.094)	-0.212 (0.118)
Interviewer 2	0.065** (0.023)	0.040 (0.200)	0.041* (0.074)	-0.230* (0.096)	-0.029 (0.824)	-0.205 (0.124)	-0.229* (0.079)	-0.086 (0.511)	-0.101 (0.470)	0.071 (0.593)
Interviewer 3	0.054** (0.041)	0.065** (0.023)	0.087*** (0.000)	-0.508*** (0.000)	-0.410*** (0.001)	-0.495*** (0.000)	-0.281** (0.020)	-0.537*** (0.000)	-0.366*** (0.005)	-0.376*** (0.002)
Interviewer 4	0.027 (0.354)	0.035 (0.256)	0.048** (0.039)	-0.210 (0.131)	-0.173 (0.197)	-0.090 (0.499)	-0.156 (0.235)	-0.130 (0.327)	-0.133 (0.346)	-0.073 (0.588)
Interviewer 6	0.027 (0.466)	0.053 (0.185)	0.052* (0.078)	-0.266 (0.136)	-0.051 (0.765)	-0.083 (0.626)	-0.080 (0.633)	-0.240 (0.157)	-0.231 (0.203)	-0.055 (0.747)
Interviewed in person by Interviewer 1	-0.015 (0.774)	0.012 (0.831)	-0.002 (0.955)	0.227 (0.367)	0.147 (0.544)	0.184 (0.448)	0.168 (0.479)	0.480** (0.046)	0.408 (0.111)	0.518** (0.033)
Interviewed in person by Interviewer 2	-0.036 (0.427)	-0.010 (0.837)	-0.040 (0.273)	0.134 (0.540)	-0.086 (0.684)	0.208 (0.325)	0.202 (0.328)	0.130 (0.533)	0.285 (0.202)	-0.111 (0.604)
Interviewed in person by Interviewer 3	-0.030 (0.509)	0.015 (0.755)	-0.068* (0.065)	0.181 (0.412)	0.368* (0.084)	0.257 (0.225)	0.296 (0.155)	0.236 (0.261)	0.630*** (0.005)	0.295 (0.164)
Interviewed in person by Interviewer 4	-0.026 (0.584)	-0.005 (0.923)	-0.035 (0.362)	-0.235 (0.315)	-0.208 (0.356)	-0.377* (0.095)	-0.059 (0.790)	-0.183 (0.413)	0.244 (0.303)	-0.331 (0.158)
Interviewed in person by Interviewer 6	0.009 (0.879)	0.008 (0.899)	-0.034 (0.452)	0.319 (0.240)	0.094 (0.717)	0.077 (0.769)	0.151 (0.555)	0.346 (0.180)	0.339 (0.218)	0.181 (0.488)
Constant	0.882***	0.865***	0.901***	0.311***	0.403***	0.181**	0.348***	-0.018	0.081	-0.391***

	(0.000)	(0.000)	(0.000)	(0.000)	(0.000)	(0.030)	(0.000)	(0.822)	(0.358)	(0.000)
Observations	360	360	360	360	360	360	360	360	360	360

Notes: P-values in parentheses: *** p<0.01, ** p<0.05, * p<0.1. Baseline: Interviewed by video interview, by interviewer 5.

Table A18: Tobit regressions including impact of education with interaction by mode, reported separately for each health state

Variables	Health state									
	11212	12112	21111	21345	23152	34244	43515	44553	55424	55555
Interview conducted in-person	-0.009	-0.003	-0.000	-0.122	-0.095	-0.029	-0.092	-0.021	-0.009	-0.146*
	(0.587)	(0.849)	(0.994)	(0.113)	(0.188)	(0.702)	(0.206)	(0.782)	(0.905)	(0.057)
Male	0.008	0.024	0.030**	0.174**	0.124*	0.188***	0.066	0.097	0.059	0.108
	(0.593)	(0.122)	(0.010)	(0.013)	(0.060)	(0.006)	(0.316)	(0.156)	(0.404)	(0.120)
Aged 41 to 64	0.013	0.022	0.007	-0.211***	-0.210***	-0.100	-0.087	-0.150*	-0.010	-0.134*
	(0.450)	(0.215)	(0.588)	(0.009)	(0.006)	(0.204)	(0.255)	(0.059)	(0.904)	(0.098)
Aged 65 and over	0.015	0.023	-0.000	-0.111	-0.115	-0.165	-0.056	-0.061	0.239**	0.115
	(0.525)	(0.373)	(0.996)	(0.344)	(0.298)	(0.149)	(0.610)	(0.595)	(0.044)	(0.325)
Ethnicity of White British or White Other	0.037*	-0.003	0.013	-0.033	0.174**	0.119	-0.074	0.075	-0.096	-0.010
	(0.051)	(0.890)	(0.374)	(0.718)	(0.046)	(0.186)	(0.394)	(0.408)	(0.302)	(0.912)
Day-to-day activities are limited a lot because of a health problem or disability	0.025	0.030	0.023	0.068	0.123	0.072	0.044	0.178	0.165	0.101
	(0.356)	(0.299)	(0.291)	(0.606)	(0.322)	(0.576)	(0.726)	(0.168)	(0.218)	(0.443)
Have experienced illness in you, yourself	-0.018	-0.021	-0.024*	-0.139*	-0.097	-0.052	-0.058	-0.062	-0.052	0.015
	(0.285)	(0.243)	(0.062)	(0.080)	(0.193)	(0.499)	(0.439)	(0.427)	(0.515)	(0.854)
Parent/guardian for a child or children aged under 18 years	0.001	0.005	0.011	0.054	0.151*	0.030	0.060	0.148*	0.064	0.096
	(0.945)	(0.774)	(0.437)	(0.525)	(0.057)	(0.716)	(0.453)	(0.073)	(0.456)	(0.253)
In employment or self-employment	0.019	0.028	0.004	0.001	0.003	-0.070	-0.034	0.025	0.124	0.151*
	(0.265)	(0.114)	(0.740)	(0.989)	(0.965)	(0.367)	(0.653)	(0.749)	(0.128)	(0.059)
Married	0.018	0.004	0.013	0.186**	0.236***	0.108	0.061	0.067	0.041	0.044
	(0.263)	(0.800)	(0.293)	(0.015)	(0.001)	(0.148)	(0.400)	(0.372)	(0.591)	(0.561)

Variables	Health state									
	11212	12112	21111	21345	23152	34244	43515	44553	55424	55555
IMD most deprived quintile	0.038	0.041	0.023	-0.071	0.022	-0.168	-0.078	-0.179	-0.262**	-0.190
	(0.157)	(0.151)	(0.265)	(0.579)	(0.854)	(0.178)	(0.519)	(0.151)	(0.044)	(0.135)
IMD least deprived quintile	-0.006	-0.006	0.006	-0.113	-0.105	-0.152**	-0.074	-0.178**	-0.027	-0.068
	(0.709)	(0.718)	(0.645)	(0.151)	(0.158)	(0.048)	(0.316)	(0.021)	(0.736)	(0.386)
Rent (home) from a local authority	-0.019	-0.070***	-0.050**	-0.122	-0.090	-0.062	0.049	-0.056	-0.013	0.016
	(0.441)	(0.008)	(0.011)	(0.302)	(0.419)	(0.590)	(0.659)	(0.627)	(0.912)	(0.891)
No degree or equivalent professional qualification	-0.019	-0.028	-0.036*	0.077	0.127	0.030	-0.077	0.215*	0.100	0.009
	(0.467)	(0.310)	(0.085)	(0.539)	(0.285)	(0.809)	(0.517)	(0.081)	(0.431)	(0.943)
Interview conducted in-person * No degree or equivalent professional qualification	0.079*	0.049	0.084**	0.129	0.135	0.255	0.223	-0.057	-0.014	-0.000
	(0.079)	(0.307)	(0.019)	(0.551)	(0.509)	(0.227)	(0.276)	(0.787)	(0.951)	(1.000)
	0.851***	0.867***	0.909***	0.071	0.013	-0.090	0.265***	-0.308***	-0.174	-0.641***
	(0.000)	(0.000)	(0.000)	(0.507)	(0.901)	(0.385)	(0.009)	(0.003)	(0.108)	(0.000)
	360	360	360	360	360	360	360	360	360	360

Notes: P-values in parentheses: *** p<0.01, ** p<0.05, * p<0.1. Baseline: Interviewed by video interview, female, aged 18 to 40 years, ethnicity is not white, no or some limitations in daily activities as a result of health, no experience of illness in yourself, not a parent or guardian of child aged under 18 years, not employed, not married, IMD middle three quintiles, do not rent a house from a local authority, have degree or equivalent professional qualification.

Section 5: Additional analyses

Table A19: Interview location and travel time

	Video interviews N=224, %	In-person interviews N=136, %
Where are you taking this interview?		
Interview in-person in a university room		100%
Online at home	96.0%	
Online but not at home ¹	4.0%	
Travel time to get to the interview, mean minutes (SD), Interquartile range	N/A	23.8 (13.8), 15-30 ²

Notes: ¹Participants specified work (n=5), gym, library, accommodation, home of a friend. ² n=134

Table A20: The achieved sample in comparison to invited participants who had already expressed an interest in participating and provided contact details, by mode

		Video interview N=224 (%)	Invited to video interview N=414 (%)	In- person interview N=136 (%)	Invited to in- person interview N=358 (%)
Gender	Male	44.6	58.5	44.1	59.5
	Female	55.4	41.3	55.2	39.7
	Prefer not to say	0	0.2	0.7	0.8
Female	Age 18 to 40	24.1	22.2	21.3	25.7
	Age 41 to 64	21.4	27.1	25.7	27.7
	Age 65 and over	9.8	9.2	8.1	6.2
Male	Age 18 to 40	18.8	15.2	15.4	22.1
	Age 41 to 64	17.4	15.9	20.6	12.0
	Age 65 and over	8.5	10.1	8.1	5.6
Prefer not to say	Prefer not to say	0	0.2	0.7	0.8
Ethnicity	White	73.2		86.0	
	White British	63.8	66.4	76.5	64.8
	White non- British	9.4	8.7	9.6	8.7
	Asian / Asian British	6.7	6.8	8.1	9.2
	Black / African / Caribbean / Black British	11.2	9.2	1.5	9.5
	Mixed / Multiple ethnic groups	4.5	5.3	1.5	3.9
	Other ethnic group	3.1	2.2	0.7	3.4

		Video interview N=224 (%)	Invited to video interview N=414 (%)	In- person interview N=136 (%)	Invited to in- person interview N=358 (%)
	Prefer not to say	1.3	1.5	2.2	0.6
IMD Index of multiple deprivation	1 or 2 (most deprived quintile)	9.4	16.0	8.8	10.1
	3,4,5,6,7,8	56.7	56.8	55.1	58.9
	9,10 (least deprived quintile)	30.4	27.2	33.8	31.0
	Prefer not to say/no response	3.6	0.5	2.2	0
Day-to-day activities limited because of a health problem or disability	Yes, limited a lot	10.3	11.6	6.6	8.1
	Yes, limited a little	22.3	25.1	27.9	22.6
	No	67.4	56.5	65.4	57.8
No response/prefer not to say					

Table A21: How invited participants heard about the study

	Invited participants N=772 (%)
Advert in newspaper	10.5
Call for Participants website	14.6
Facebook	19.2
From a friend or family member	12.3
From an interviewer	1.2
Gumtree advert	2.2
Instagram	0.4
Letter through the post	29.0
Noticeboard/flyer	4.4
Twitter	5.6
Missing	0.6