



Deposited via The University of Sheffield.

White Rose Research Online URL for this paper:

<https://eprints.whiterose.ac.uk/id/eprint/187720/>

Version: Published Version

Article:

Saxon, L., Bromfield, S., Leow-Taylor, S.H. et al. (2022) Counting on U training to enhance trusting relationships and mental health literacy among business advisors : protocol for a randomised controlled trial. BMC Psychiatry, 22 (1). 400.

<https://doi.org/10.1186/s12888-022-04034-7>

Reuse

This article is distributed under the terms of the Creative Commons Attribution (CC BY) licence. This licence allows you to distribute, remix, tweak, and build upon the work, even commercially, as long as you credit the authors for the original work. More information and the full terms of the licence here:

<https://creativecommons.org/licenses/>

Takedown


If you consider content in White Rose Research Online to be in breach of UK law, please notify us by emailing eprints@whiterose.ac.uk including the URL of the record and the reason for the withdrawal request.

STUDY PROTOCOL

Open Access



Counting on U training to enhance trusting relationships and mental health literacy among business advisors: protocol for a randomised controlled trial

L. Saxon^{1*†} , S. Bromfield^{1†}, S. H. Leow-Taylor¹, C. E. Vega¹, M. Berk^{2,3,4,5,6}, A. D. LaMontagne⁷, A. J. Martin⁸, M. Mohebbi⁹, K. Nielsen¹⁰, N. J. Reavley¹¹, A. Walker¹², A. Conway¹³, A. de Silva^{14,15}, K. Memish¹⁶, A. Rossetto^{11,17}, G. Tanewski¹ and A. Noblet¹

Abstract

Background: Financial distress is thought to be a key reason why small-medium enterprise (SME) owners experience higher levels of mental health conditions compared with the broader population. Business advisors who form trusting, high-quality relationships with their SME clients, are therefore well placed to: (1) help prevent/reduce key sources of financial distress, (2) better understand the business and personal needs of their clients and, (3) recognise the signs and symptoms of mental health conditions and encourage help-seeking where appropriate. The aim of this study is to compare the effectiveness of relationship building training (RBT) combined with mental health first aid (MHFA) training for business advisors with MHFA alone, on the financial and mental health of their SME-owner clients.

Methods: This is a single blind, two-arm randomised controlled trial. Participants will be business advisors who provide information, guidance and/or assistance to SME owner clients and are in contact with them at least 3 times a year. The business advisors will invite their SME-owner clients to complete 3 online surveys at baseline, 6- and 12-months. Business advisors will be randomised to one of two conditions, using a 1:1 allocation ratio: (1) MHFA with RBT; or (2) MHFA alone, and complete 3 online surveys at baseline, 2- and 6-months. Primary outcomes will be measured in the business advisors and consist of the quality of the relationship, stigmatizing attitude, confidence to offer mental health first aid, quality of life and provision of mental health first aid. Secondary outcomes will be measured in the SME owners and includes trust in their business advisors, the quality of this relationship, financial wellbeing, financial distress, psychological distress, help-seeking behaviour, and quality of life. To complement the quantitative data, we will include a qualitative process evaluation to examine what contextual factors impacted the reach, effectiveness, adoption, implementation, and maintenance of the training.

Discussion: As there is evidence for the connections between client trust, quality of relationship and financial and mental wellbeing, we hypothesise that the combined RBT and MHFA training will lead to greater improvements in these outcomes in SME owners compared with MHFA alone.

[†]L. Saxon and S. Bromfield shared as co-first authors.

*Correspondence: l.saxon@deakin.edu.au

¹ Deakin Business School, Deakin University, Burwood, VIC, Australia
Full list of author information is available at the end of the article



Trial registration: [ClinicalTrials.gov: NCT04982094](https://clinicaltrials.gov/ct2/show/study/NCT04982094). Retrospectively registered 29/07/2021. The study started in February 2021 and the recruitment is ongoing.

Keywords: Mental health first aid, Depression, Prevention, Mental health conditions, Relationships, Business advisors, SMEs

Background

Small to Medium Enterprises (SMEs) account for 99% of all businesses in Australia and at least 95% of enterprises in all OECD countries [1, 2]. They contribute significantly to Australia's social and economic prosperity, with small businesses employing approximately 4.7 million people and accounting for 41% of total employment [3]. Despite their importance, SME owners face significant ongoing challenges. Externally, these challenges include increasing market volatility, lending restrictions, extensive legislative reform, and rapid technological advancements, while internally they include monitoring cash flow, managing staff, and ensuring the smooth administration of the business [2, 4]. These challenges can generate significant financial pressure and in turn, financial distress (or a lack of financial wellbeing) among SME owners [5].

Financial distress, the SME owner's working conditions (e.g., long hours, burden of responsibility, isolation, obligation to work when sick) and their low rates of help seeking are thought to be why this group experiences higher levels of mental health conditions compared with the broader population [5–11]. The COVID-19 pandemic has also triggered a sharp increase in psychological distress among small business owners, as a recent study commissioned by the Australian Government shows 1 in 3 rated their mental health as fair to poor during the first three months of the pandemic [12]. Developing strategies that can help alleviate the financial distress experienced by SME owners, but at the same time encourage owners to seek help for potential mental health conditions, are therefore critical for protecting and promoting their mental health.

One group that has the potential to address financial distress and act as an intermediary between SME owners and mental health services are business advisors, particularly accountants and bookkeepers. SME owners draw on the technical expertise provided by business advisors on a regular basis, and advisors can often form trusting, long-term relationships with their clients [13]. Intuitively, the formation of these more trusting, longer-term relationships provides the potential for business advisors to better understand the business and personal challenges faced by SME owners, to identify the early signs of mental health conditions and to take action to help alleviate the sources of financial distress.

Mental health literacy programs, such as Mental Health First Aid (MHFA) training, are a key strategy for the early identification of mental health conditions (e.g., depression, anxiety) and are designed to reduce their impact (i.e., secondary, and tertiary prevention) rather than preventing them from occurring in the first instance (i.e., primary prevention) [14–17]. A systematic review has shown that MHFA training can improve knowledge of mental health and the treatments available, recognition of mental health conditions and reduce stigma [18]. This training is popular in the health and human service sectors, and one observational study on financial counsellors has been conducted, however it is not known to what extent their clients received mental health first aid-related advice and support [9, 18–23].

The aim of the current study called Counting on U is to evaluate the effectiveness of relationship building training (RBT) combined with mental health first aid (MHFA) for business advisors, compared with MHFA alone, on the relationship between business advisors and their SME-owner clients, and the financial and mental health wellbeing of their clients [20]. The RBT has been guided by primary prevention principles and aims to equip business advisors with the skills to: (1) form more trusting relationships with their clients so that SME owners feel more comfortable disclosing financial difficulties and/or mental health conditions, (2) better understand the needs of the business and the business owner and thus, (3) prevent/reduce the financial distress experienced by SME owners.

In view of the above, we have formulated a set of hypotheses for testing in the current study. We expect that for business advisors randomised to the RBT and MHFA training compared with MHFA alone: (1) will be in a better position to recognise signs of distress in their SME-owner clients, so the quality of their relationship will be stronger, (2) better understand how financial distress may lead to poor mental health, and decrease any stigmatizing attitudes they may have (e.g., depression is a sign of personal weakness) and, (3) be more confident to provide mental health first aid and the frequency in which they do so, will be greater. SME owners whose advisors undertake the RBT and MHFA, compared with MHFA alone will report: (1) greater trust in their business advisor, (2) the quality of the relationship with their business advisor will be stronger, (3) improved financial

wellbeing, psychological distress, and quality of life, and (4) greater help seeking intentions and behaviour. This will be an Australian and New Zealand wide study targeting eligible participants across all regions, urban/regional/rural and states, to ensure SME owner clients such as farmers in drought-stricken areas, to city coffee shop owners, have an opportunity to benefit from the program.

Methods/design

Study design

This is a two-arm, single blind, superiority, randomised control trial to assess the effectiveness of the intervention arm (RBT and MHFA), relative to the control arm (MHFA alone) on the respective primary and secondary outcomes for business advisors and their SME-owner clients. Using a mixed-methods approach, we will collect quantitative survey data from business advisors and their SME owner clients and qualitative data from interviews with business advisors, SME-owners, instructors, training vendors, and the accounting and bookkeeper member bodies (Supplementary file 1).

Recruitment

Business advisory professionals

The recruitment of business advisors into the online training program, Counting on U, will be conducted over 18 months via membership of their respective professional organisation (i.e., Chartered Accountants of Australia and New Zealand (CAANZ), Certified Practising Accountants (CPA) Australia, Institute of Public Accountants (IPA), Institute of Certified Bookkeepers (ICB)). Representatives from each organisation will invite their members via email to participate in the training and research program. The project will also be advertised through Deakin University and professional organisations' newsletters, websites, and social media pages.

Convenience sampling will be used, with all respondents who meet the inclusion criteria offered places in the training program until a total of 984 participants have been recruited. The research team will monitor the participants' location in urban/regional/rural areas and state, and if a selection bias has occurred, advertising will be targeted to these underrepresented groups. All business advisors will be requested to complete a short online survey at three time-points: baseline, 2 months, and 6 months post-training (equivalent to 1- and 5-months follow-up post-training) (Figs. 1 and 2).

SME owners

Business advisors will be asked to invite their SME owner clients to take part in the study to help assess the effectiveness of the training from the perspective of someone who is expected to benefit from it. The SME owner clients will complete 3 online surveys at baseline, 6 and 12 months (or 5- and 11 months follow-up post-training). Business advisors will be requested to send a pre-prepared email to 2–5 of their SME owner clients inviting them to participate (Figs. 1 and 2). However, this is not a mandatory requirement for business advisors.

Inclusion criteria

The business advisor sample will be selected according to the following inclusion criteria: any qualified business advisor from Australia or New Zealand who provides business-related advice to a small-medium enterprise (SME) client. Business advice refers to the information, guidance and/or assistance provided by an external advisor that either directly or indirectly helps to prevent/reduce the financial pressures experienced by SME owner-clients. The SME owner client must be the owner-manager of the business (i.e., non-operational owners or 'silent partners' are not included) and the business needs to employ 1–199 employees. The business advisor must be in contact with their client at least three times a year. The exclusion criteria will be any business advisor who has completed Mental Health First Aid training within the last two years.

Because of our recruitment strategy, eligible participants will be randomised to one of two arms prior to receiving a generic invitation to join the study. They will be informed what study arm they are in, after they have agreed to participate. Thus, participants will only be blind to group allocation prior to providing consent to avoid self-selection bias. Participants must read a plain language statement and sign an online consent form hosted by Deakin University prior to starting (Supplementary file 2). Participants can withdraw at any time by contacting the research team at Deakin University.

Intervention conditions

Relationship building and Mental Health First Aid training

Business advisors randomised to the intervention arm will attend Relationship Building Training (RBT) over a 2-hour live zoom session. The module, which will be delivered by qualified instructors, aims to equip business advisors with the skills they need to enhance trustworthiness, reduce information asymmetry and how to harness their communication skills when having a difficult conversation about finances or mental health with their clients. The RBT module's content was developed

TIMEPOINT	STUDY PERIOD								
	Enrolment	Allocation	Intervention Training Sessions					Post intervention	
	-t ₁	0	t ₁	t ₂	t ₃	t ₄	t ₅	6-months	12-months
ENROLMENT:									
Eligibility screen	X								
Informed consent	X								
Allocation		X							
INTERVENTIONS									
Business advisors:									
RBT+MHFA			—————						
MHFA alone			—————						
ASSESSMENTS for Business Advisors:									
Survey 1		X							
Survey 2						X			
Survey 3								X	
Interview						X			
ASSESSMENTS for SME owners									
Survey 1		X							
Survey 2								X	
Survey 3									X
Interview								X	

Fig. 1 Counting on U schedule of enrolment, interventions, and assessments

by the principal investigators (AN, GT) and is partially drawn from a post-graduate client relationship building unit taught to accountants and financial planners at Deakin University. This module will be followed by a global, certified, blended Mental Health First Aid (MHFA) training program [20]. The training requires 5 hours of online course work followed by 2 × 2.5-hour live zoom sessions delivered by qualified instructors. MHFA aims to enhance mental health literacy, teach business advisors the skills to identify the signs of mental health conditions, and how to have a conversation with SME owner clients who may need professional help. Participants will also attend 2 × 1-hour Booster sessions 1 and 3-months after completing the training. These booster sessions aim to give participants the opportunity to consolidate their learning, to identify factors that help or hinder the transfer of learning into a change in behaviour and to share experiences on how to maximise their learning. The importance of the business advisors using self-care to protect their own

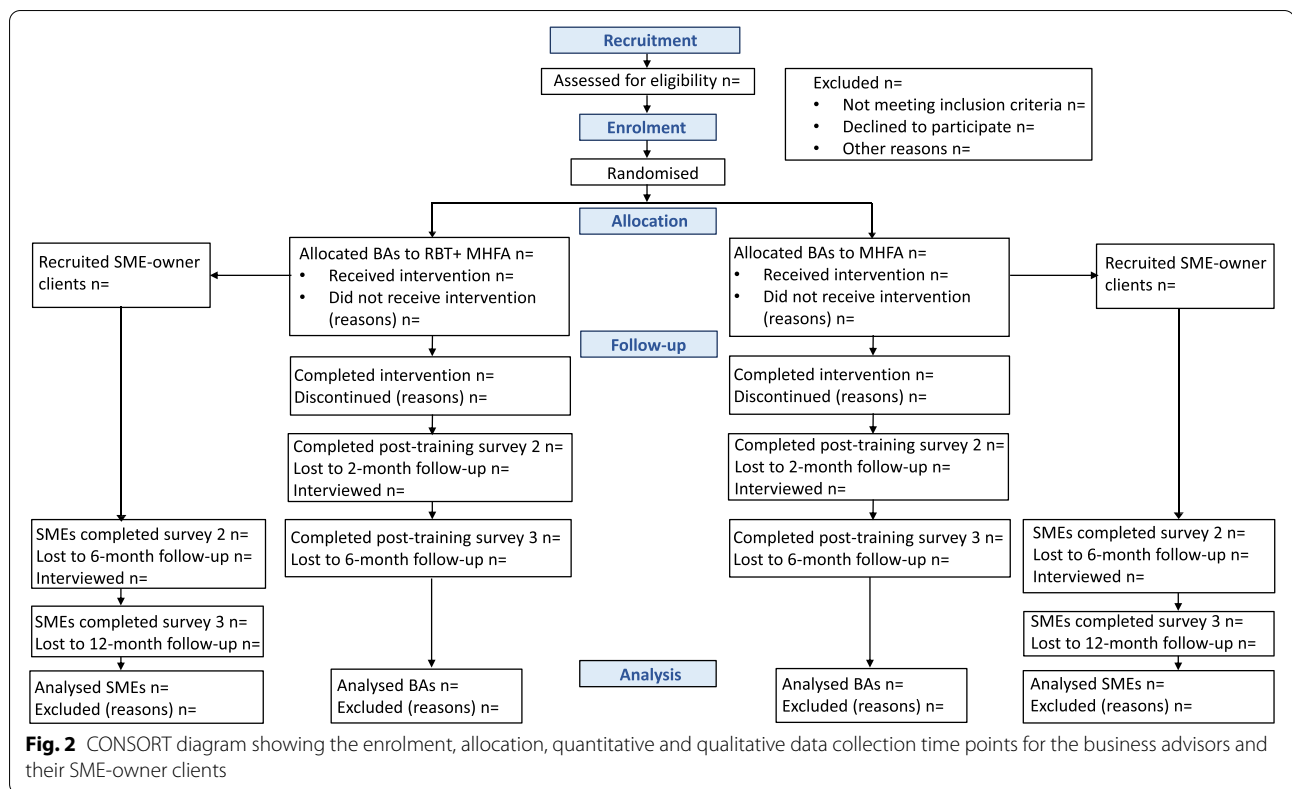
well-being will be reinforced in the RBT and Booster sessions.

Mental Health First Aid control group

Participants in the control group will complete the MHFA training alone and attend the two MHFA Booster sessions only.

Measures

Demographic information including age, sex, and residential data will be collected from the registration forms. The training will have direct effects on the business advisors and in turn, have indirect effects on their SME owner-clients. For this reason, the outcomes measured from business advisors are classed as primary, and for the SME owners they are secondary.



Primary outcomes for business advisors

Quality of the relationship

At each of the data collection points, the quality of the relationship between the business advisor and their SME owner clients will be measured using a Quality of the Relationship Questionnaire. The questions will measure the business advisor’s belief about how much attention they are giving their clients, their awareness about their client’s financial and emotional needs, the quality of the advice they provide and the impact they have on their business. Ten items will be used, four are from the Relationship Flourishing Scale [24] that has a Cronbach’s alpha of 0.93, and six are from a validated newly developed tool by the principal investigators (AN, GT) with factor loadings ranging from 0.81 to 0.87. The Relationship Flourishing Scale has demonstrated acceptable concurrent, convergent and content validities [24]. All items are on a 7-point Likert scale (1 strongly disagree, 7 strongly agree) with a higher total score indicating a higher quality relationship.

Stigmatising attitude

The business advisors personal stigmatising attitude will be measured at each time point using eight statements that queries the respondent’s opinion of a person

described in a modified vignette (personal stigma) [25]. The statements are based on those developed by Griffiths et al., who also reported on their psychometric properties, showing moderately high convergent validity and acceptable Cronbach alphas of 0.78 to 0.82 [26]. The vignette portrays a 35-year-old business owner who is showing signs of depression. An example of a personal stigma item is: “A problem like John’s is a sign of personal weakness”. All 8 items will be scored on 5-point Likert scale (1 strongly agree, 5 strongly disagree), with a higher score indicating stronger stigmatising attitudes.

Previous work has shown that the 8 items are multi-dimensional and by grouping certain items they can provide two distinct stigma dimensions “weak-not-sick” and “dangerous/unpredictable” [27, 28]. “Weak-not-sick” suggests the problem portrayed in the vignette is a personal weakness under the control of the person rather than as a medical condition. While “dangerous/unpredictable” characterizes the vignette character as unpredictable and dangerous. These two dimensions can inform whether participants better understand mental health is not a sickness but are still fearful of their behaviour. A factor loading analysis will be conducted to assess which items best load onto each dimension and a total mean and standard deviation score will be generated for each.

Confidence to provide Mental Health First Aid

One question will capture the business advisor's confidence to help a person described in a vignette (see stigmatization) who has a mental health problem. The question will assess their confidence on a 5-point Likert scale (1 not at all confident, 5 extremely confident) and will be included in all three surveys.

Provision of Mental Health First Aid

Provision of mental health first aid questions will ask whether the business advisor has talked to a SME owner about their mental health over the past month using a 4-point Likert scale (1 never, 4 many times) [29]. A score of 1 will be given if they answer A Few or Many Times, with higher scores indicating they delivered mental health first aid more often. If they have talked with a SME owner client, they will be asked to indicate how many out of 12 actions they had taken. A score of 1 will be allocated to any action they have answered A Few or Many Times and summing these scores. Business advisors will complete these questions at baseline, 2- and 6-months follow-up.

Secondary outcomes for SME owners**Trust**

The degree of trust the SME owner has in their business advisor will be measured using the trust in Business Advisor Questionnaire [30]. This tool assesses three elements of trust: confidence, acting proactively and not exploiting vulnerabilities. In addition, the SME owner's confidence in the services (i.e., beyond compliance services) offered by the business advisor will be assessed. Eleven questions will be used to assess these elements on a 5-point Likert scale (1 strongly disagree, 5 strongly agree) with a higher total score indicating a more trusting relationship. Factor loadings for these items range from 0.43 to 0.95 and show good reliability, with Cronbach's alpha of 0.931 to 0.937. The items have demonstrated content validity, i.e., they assess all relevant components of trust [30]. The SME owner will answer these questions at baseline, 6- and 12-months follow-up.

Quality of the relationship

At each of the data collection points, the quality of the relationship between the SME owner and their business advisor will be measured using a Quality of the Relationship Questionnaire. The questions will measure the SME owner's satisfaction on how aware their business advisor is about their wellbeing, whether they can turn to their advisor when things are going badly, and whether they seek their advice on a range of business matters. Six items will be used from a newly developed tool by the principal

investigators (AN, GT) with factor loadings of 0.81 to 0.87, and uniqueness scores of 24 to 34%, indicating they are highly relevant to measuring the quality of relationship. All items are on a 7-point Likert scale (1 strongly disagree, 7 strongly agree) with a higher total score indicating a higher quality relationship.

Financial wellbeing

The financial wellbeing of the SME owners will be measured at each time point using the Perceived Financial Wellbeing Questionnaire [31]. The SME owners must consider how much they agree with 5 statements such as "I am behind with my finances". Their answers will be scored on a 5-point Likert scale (1 strongly agree, 5 strongly disagree) and a lower total mean score will indicate a more positive outlook. Perceived financial wellbeing is a strong predictor of overall well-being and the items have a Cronbach's alpha of 0.86 to 0.94 [31]. The questionnaire has demonstrated discriminate and incremental validity [31].

Financial distress

The financial distress of the SME owners will be measured using the Financial Distress/Financial Wellbeing Scale [32]. This comprises of 8 items designed to assess how positively they view their financial situation, on a score from 1 to 10. A higher mean total score indicates no financial distress/high financial well-being. It has robust internal reliability, with a Cronbach's alpha of 0.956 indicating that the items consistently yield similar scores. Factor loadings of the 8-items range from 0.83 to 0.93, indicating the measurement of only one dimension and have shown robust content validity [32]. The SME owner's financial distress will be assessed at baseline, 6- and 12-months follow-up.

Psychological distress

Psychological Distress of the SME owners at all time points will be measured using the Kessler 6 (K6) [33]. This broad screening scale assesses individuals for psychological distress as defined as a K6 score ≥ 13 . The K6 asks respondents, "In the past four weeks how often did you feel the following: nervous, hopeless, restless, fidgety, worthless, depressed and felt that everything was an effort?" For each question, a value of zero to four is assigned (0 none of the time, 4 all the time), and the total score is summed out of 24 with a higher score indicating greater psychological distress. The scale has demonstrated excellent internal consistent reliability (Cronbach's alpha = 0.89) and convergent, incremental and divergent validity [33].

Quality of life

Quality of Life questions will measure the general health of the SME owners at all time points. The Short Form-12 questionnaire (SF-12) produces two summary scores – a mental component score (MCS-12) and a physical component score (PCS-12). This test has a test re-test reliability of 0.76 to 0.89 for the mental (MCS-12) and physical (PCS-12) health components [34]. Both components can discriminate among groups known to differ in their physical and mental conditions, yielding relative validities of 0.63 to 1.07 [34]. The answers are weighted and the results are presented relative to the United States population profile at the time of the original publication in 1994. A higher score for MCS and PCS indicates a better health state.

Help Seeking Behaviour

Actual Help Seeking Behaviour questions will assess the SME owners behaviour of actively seeking assistance for any mental health problems at all time points [35]. The scale covers informal and formal assistance, as well as physical and emotional aspects of help-seeking behaviour. The participant is asked to select from a list of people they have gone to for advice or help in the past two-weeks.

Other outcomes will be included in the surveys to test longitudinal models designed by the investigators (AN and GT) that describe how the characteristics of an individual business advisor or SME owner (e.g., resilience) and working conditions (e.g., autonomy, workload) may impact their financial and/or mental wellbeing. These outcomes are described in Supplementary file 3.

Process evaluation

The second aim of this project is to undertake a comprehensive, research-to-practice process evaluation to ensure that the assessment of Counting on U extends beyond the effectiveness of the interventions [36, 37]. We will draw on the research translation evaluation framework, RE-AIM (i.e., Reach, Effectiveness, Adoption, Implementation, and Maintenance), to explore: the processes used to Reach a nationally representative sample of practising business advisors; how Effective and relevant the intervention is to business advisors and SME owners, and what factors helped or hindered the business advisors to apply what they learnt; what factors influenced the professional member bodies to Adopt the training; whether the instructors Implemented the training in the way it was intended, and; why or why not the professional member bodies decide to Maintain the training as part of their ongoing career professional development program

and whether any benefits of the training are Maintained long-term.

To measure these outcomes, field notes and qualitative structured interviews via zoom will be conducted during the training with the business advisors, SME owners, instructors, training vendors, and professional member organization representatives who will assist with the recruitment of business advisors. A risk mitigation-strategy will be designed for the researchers to use in case any interviewee is experiencing poor mental health. To assess intervention fidelity (Implementation), the research team will observe training sessions and complete a fidelity checklist to ensure all topics are covered and that the quality of the teaching is meeting expectations. The research team will observe all 14 instructors deliver the five training sessions (i.e., 1 x RBT, 2 x MHFA, 2 x Booster). The training program will also be monitored through regular weekly meetings between the research team, the instructors, and the training vendor.

Instructors

The training program will be delivered by 14 instructors who are either accredited MHFA Master Instructors (conducted over 30 MHFA courses) or accredited MHFA Principal Master Instructors (Master Instructors must conduct over 10 MHFA courses in a 12-month period) in Australia and New Zealand. All instructors are accredited to deliver the Blended Online Financial Services Professionals MHFA course. Instructors will also undergo training to deliver the RBT.

Data management and confidentiality

All participant data will be de-identified using a unique identifier to maintain anonymity. Results will be published in peer-reviewed journals and disseminated to the professional member bodies to communicate with their members. The Deakin University core research team (AN,GT,LS,SB,SHLT,CEV) will have access to the trial data set for the duration of the trial. All data will be kept electronically on a password protected server at Deakin University and securely stored for 5 years with AN and GT. Public access to the full protocol, participant level data-set and statistical code will be available upon request.

Ethical principles

This study has been approved by Deakin University Human Research Ethics Committee (2020–399). It has been registered with [ClinicalTrials.gov](https://www.clinicaltrials.gov) with the international standard randomised controlled trial number NCT04982094. Any amendments to the protocol will be approved by the Ethics Committee, will be

communicated with [ClinicalTrials.gov](https://www.clinicaltrials.gov) and any other relevant party (i.e., trainers, participants).

Trial governance

Appropriate governance structures have been developed to ensure the research team is able to access the advice and guidance provided by each partner organisation that includes WorkSafe Victoria, Beyond Blue, MHFA Australia, The Australian Treasury, CAANZ, CPA, ICB and IPA. A steering committee will be formed consisting of representation from the research team and the eight partner organisations. In addition, the Council of Small Business Owners Australia (COSBOA) has also agreed to be represented on the steering committee. They will play a key role in ensuring this work is grounded in the realities of SME owners (including those who have [or have had] mental health conditions). A small business consultant with high level expertise in working with SME owners and their business advisors will also be employed on a fractional basis (0.1) to work with the steering committee to identify high-impact knowledge translation strategies that can address the needs of both SME owners and their intermediaries. The steering committee will meet on a quarterly basis to oversee trial conduct and monitor data collection. A collaborative decision-making process will be used to ensure all members are actively involved in overseeing the project. Investigators will provide an annual report to the Ethics Committee and NHMRC, which will include interim data analysis, any unintended effects of the trial and raise any need to stop the trial.

Incentives

Business advisors will be incentivised to take part in the training by obtaining continuing professional development (CPD) points that will count towards fulfilling their biennial professional membership requirements, certification as a mental health first aider, and a \$30 gift voucher for completing surveys 2 and 3. SME owner participation will be incentivised with a \$25 gift card for each survey they complete. One-hundred-dollar gift cards will also be provided to SME owners and business advisors who agree to be interviewed as part of the process evaluation. For SME owners and business advisors who are Australian residents and complete all 3 surveys, they will have a chance to win a \$6000 AUD travel voucher via a prize-draw.

Randomisation

Simple random allocation will be used to ensure the sample size is balanced across the two groups (1:1). Should differential attrition arise part-way through the project, i.e., due to a preference to partake in the intervention, the allocation ratio will be adjusted to compensate for this,

i.e., a 1:2 ratio (MHFA+RBT: MHFA). The membership engagement officer at each business advisor's member organisation (i.e., CAANZ, CPA, IPA, ICB) will conduct the randomisation process by providing eligible participants with a computer-generated unique numeric ID and allocating them to RBT + MHFA or MHFA alone. The participant's names will be concealed throughout this process. Allocation concealment will be achieved because the member organisations will be unable to predict the unique ID allocated to each participant before they are sorted and randomised to a group. Participants will use their unique ID for completing the surveys, and the researchers will not have access to the business advisor's contact details only unique ID, group allocation and survey results. Any contact will occur via member bodies or training vendor.

Sample size and power analysis

The sample size estimation was conducted using Power Analysis and Sample Size (PASS) software (version 15, PASS, NCSS, LLC). The calculations were based on detecting a small effect size (Cohen's $d=0.20$) in the business advisors primary outcome quality of the relationship as measured from an amended Relationship Flourishing Scale [24]. A sample of 786 business advisors randomly allocated (1:1) to the two study arms will achieve 80% power to detect an effect size $d=0.2$ in the primary outcome or a mean difference of 1.52 between the two groups. The mean difference of 1.52 was calculated using the results from a validation study of the Relationship Flourishing Scale on 408 participants who reported a mean score of 46.36 and standard deviation of 7.60 [24]. Assuming a 20% attrition rate, we will recruit 984 business advisors. Calculations are based on a two-tailed test and $\alpha=0.05$.

Statistics

A report of the findings will follow CONSORT guidelines. The quantitative analysis will examine whether the magnitude of change in primary and secondary outcomes is different between the SME owners and their business advisors randomly allocated to the MFHA or RBT + MHFA arm (i.e., between-group differential change). Population average models, using a generalised estimated equation (GEE) approach accounting for within-individual repeated measures, will be used to assess for a treatment effect in the primary outcome. The analysis will employ an unstructured correlation structure for the GEE analysis and include a robust covariance matrix estimator, or Sandwich estimator, to provide a consistent estimate of the treatment effect. The GEE approach models the average response of the population rather than modelling the

within-subject covariance structure, and unlike a basic regression model, it does not require distributional assumptions. It considers the correlation of within-subject data (longitudinal data) by using all available data for each subject, and it can be used on data with non-normal distributions. The GEE model will contain the fixed effect of intervention allocation and nominal time points as the main effects, and a two-way interaction between intervention allocation and time. The two-way interaction will estimate the effect of differential change from baseline measure in the intervention compared with control group at 2- and 6-months measurements. The GEE model will compare the between-group mean change for business advisors from baseline to 2-months (1-month post-training), baseline to 6-months (4 months post-training), 2-months to 6-months to test the hypothesis (i.e., the two-way interaction between intervention allocation and measurement at 2-months and its 95% confidence interval). For SME owners, the between-group differential change will be assessed from baseline to 6-months, baseline to 12-months, and 6-months to 12-months.

In unblinded randomised control trials, participants allocated to the control group who are aware of a more desirable treatment group, may be envious of participants in the treatment group and be less willing to complete surveys [38, 39]. Because of the appeal the new RBT may offer to business advisors, we anticipate that participants in our MHFA alone group may be unmotivated to attend training sessions, complete surveys and ultimately dropout. If such a trend is observed in this study, we may take a pragmatic decision to change the random allocation ratio to allocate more participants to MHFA alone to have equal number of participants in both groups to enhance statistical power. If such a change in the allocation ratio is needed (e.g., from 1:1 to 1:2 to account for differential attrition), the participants will no longer have an equal chance of receiving each of the treatments. Bias could also arise if participants differ in important characteristics, hence the data from these two parts of the trial will be tested for homogeneity. If any significant differences are identified, the results will be analysed separately and then combined, as in a meta-analysis [40].

All analyses will be tested with a significance level of $p < 0.05$ by using the intention to treat principle. Participants classified as lost to follow-up will be compared with the study group for baseline demographic data using ordinary t test and χ^2 test for homogeneity. A sensitivity analysis will be conducted to investigate the impact of dropouts on our primary hypothesis. Magnitude of change will be estimated through effect sizes using Cohen's guidelines, whereby a value of 0.2 denotes a small, 0.5 a medium, and 0.8 a large effect size

[41–43]. Data will be entered into Excel using Microsoft Office (version 16.0.1). Professional for Windows XP and StataSE (version 16) software for statistical analysis.

Qualitative analysis

The structured interviews will be audiotaped and transcribed, then combined with field notes to form a narrative database to be analysed thematically using NVivo (QRS International Version 11) for Windows. A codebook will be created by LS and SB to help identify blocks of texts that represents one of the five RE-AIM constructs. The results of the first round will be compared and any discrepancies will be adjudicated by CEV. A more detailed second round of coding by LS and SB will identify specific themes within these blocks of texts. The results will be discussed by LS, SB and CEV, and a consensus will be reached on the emerging themes. The findings from the qualitative analysis will be used to complement those from the quantitative analysis, so we can better understand what worked for whom in which circumstances.

Discussion

The aim of this paper is to describe how we will: 1) deliver and evaluate an RCT designed to assess the effectiveness of combining RBT with MHFA for business advisors and their SME owner clients, and 2) conduct a process evaluation to assess what contextual factors impacted the reach, effectiveness, adoption, implementation, and maintenance of the program. To the best of our knowledge, this is the first study to test the effectiveness of using business advisors as a conduit for providing SME owners with mental health support. We believe this approach will ensure SME owners who need help are more likely to receive it.

One of the key strengths of the current research is that the RCT has been developed by a multi-disciplinary team of researchers (spanning the accounting and management sciences, public health and clinical psychiatry), working in conjunction with accounting and bookkeeping member bodies (IPA, CPA, CAANZ, ICB), influential policy makers (Beyond Blue, WorkSafe Victoria, The Treasury) and Australia's largest provider of MHFA training services (MHFA Australia). The strong partnerships with the professional member bodies are particularly important for ensuring that the trial could be delivered on a sector-wide scale and as part of the CPD training that accountants and bookkeepers are expected to undertake as part of their professional accreditation requirements. The accreditation points gained from the training will help incentivise business advisors to take part and to increase the likelihood that the required number of participants are recruited. In addition, collaborating with

member bodies and policy makers will help the authors identify future knowledge translation and sustainability opportunities to address mental wellbeing in the business sector.

The COVID-19 pandemic has increased the likelihood that SME owners will contact their accountant and bookkeeper in heightened states of distress. While this increased demand reinforces the need to equip business advisors with the skills to work with clients experiencing high levels of stress, the anticipated surges in business advisor workloads also represent a key barrier to advisers undertaking the training. To address this, the program has been designed with the business advisors' operational needs in mind (e.g., fully online, range of training dates offered, incentivised participation). The process evaluation and ongoing dialogue with the professional organisational bodies will also identify any recruitment and retention problems early and to implement appropriate mitigation strategies as soon as possible.

Another strength of this study is using a rigorous RCT design to assess the benefit of offering RBT in combination with MHFA compared with MHFA alone. This design will minimise confounding factors, such as lockdowns during the pandemic, that could have a significant impact on the outcomes. The length of follow-up in business advisors (5-months post training) and SME owners (11-months post training) will also inform whether there are any long-term benefits. Another unique component of this RCT is the recruitment of SME owner clients, who as end-users or beneficiaries of the training, will provide insight into the effectiveness of the training. However, the recruitment of SME owners is expected to be difficult largely because of the busy, all-consuming nature of their role (e.g., long work hours, burden of responsibility). It is for this reason, we introduced gift voucher incentives for SME owners to complete the surveys and to participate in interviews. Another strength of the study is its large sample size predicated on conservative effect size estimates.

To date, the business environment has not been leveraged as a platform for delivering mental health interventions, notwithstanding the major impact of mental health conditions on the sector. The findings from this research will provide important information on the benefits of incorporating a mental health literacy program like MHFA within a more mainstream client relationship building program. If the current research supports the hypothesis that the combined approach leads to more beneficial outcomes than MHFA alone, then the approach could be adopted by other small business intermediaries (e.g., human resource consultants, lawyers, bankers). Similarly, these findings could also be used to inform how business accounting

and finance students are trained prior to entering the workforce (i.e., via undergraduate and post-graduate degrees). Finally, the process evaluation will be critical for developing a more detailed understanding of the range of factors that helped or hindered program effectiveness and the success of its roll-out. This information, along with the outcomes of the RCT, can be used to guide efforts to enhance program reach, adoption, implementation, and maintenance in the business sector.

Abbreviations

CONSORT: Consolidated standards of reporting trials; GEE: Generalised estimated equation; MHFA: Mental health first aid; RCT: Randomised control trial; RE-AIM: Reach, effectiveness, adoption, implementation, maintenance; RBT: Relationship building training; SME: Small-medium entrepreneurs.

Supplementary Information

The online version contains supplementary material available at <https://doi.org/10.1186/s12888-022-04034-7>.

Additional file 1. Survey and Interview guides.

Additional file 2. Plain Language Statement for business advisors.

Additional file 3. Additional Outcomes.

Acknowledgements

We would like to thank the instructors and staff from Mentally Well Workplaces and Human Ex, professional member co-ordinators for helping to recruit participants, and other staff from Deakin Business School for supporting this project including Patricia Dobson and Arla Marlow.

Trial sponsors

Andrew Noblet, Andrew.noblet@deakin.edu.au and George Tanewski g.tanewski@deakin.edu.au, are the principal investigators from Deakin Business School, Deakin University, 221 Burwood Highway, Burwood, VIC, Australia.

Authors' contributions

GT and AN are the lead investigators of the trial and led the writing of the manuscript. LS, SB are collaborating investigators who co-wrote the manuscript. SHLK; CEV; MB; ADLM; AJM; KN; NJR; AW provided manuscript editing. MM provided statistical advice and co-wrote the manuscript and AR provided advice on the design of the intervention, assisted with recruitment and manuscript editing. AC, ADS, KM contributed to conceptual design of the RCT. All authors read and approved the final manuscript.

Funding

The study is funded by a National Health and Medical Research Council (NHMRC) Partnership Grant (APP1179330) in 2020 for 3 years, and contributions were made from Beyond Blue, Institute of Public Accountants, Mental Health First Aid Australia, and WorkSafe Victoria. The funding bodies played no role in the design of the study and collection, analysis, and interpretation of data and in writing the manuscript. MB is supported by a NHMRC Senior Principal Research Fellowship (1156072).

Availability of data and materials

The data for this study will be made available upon request to George Tanewski: g.tanewski@deakin.edu.au. The research team will make the findings publicly available at national and international conferences, and in peer-reviewed journal publications.

Declarations

Ethics approval and consent to participate

This study has been approved by Deakin University Human Research Ethics Committee (2020–399). Written informed consent to participate in the study will be obtained from all participants prior to their involvement.

Consent for publication

N/A. Individual data will not be used in this study.

Competing interests

AR works for Mental Health First Aid Australia. All other authors declare that they have no competing interests. No professional writers will be used to write any manuscripts that arise from this study.

Author details

¹Deakin Business School, Deakin University, Burwood, VIC, Australia. ²The Institute for Mental and Physical Health and Clinical Translation (IMPACT), Food and Mood Centre, School of Medicine, Barwon Health, Deakin University, Burwood, VIC, Australia. ³Orygen, The National Centre of Excellence in Youth Mental Health, Melbourne, VIC, Australia. ⁴Centre for Youth Mental Health, Florey Institute for Neuroscience and Mental Health, Melbourne, VIC, Australia. ⁵Department of Psychiatry, The University of Melbourne, Melbourne, VIC, Australia. ⁶Department of Public Health and Preventive Medicine, Monash University, Melbourne, VIC, Australia. ⁷Institute for Health Transformation, Deakin University, Burwood, VIC, Australia. ⁸Tasmanian School of Business and Economics, University of Tasmania, Hobart, TAS, Australia. ⁹Biostatistics Unit, Faculty of Health, Deakin University, Burwood, VIC, Australia. ¹⁰Sheffield University Management School, Sheffield, UK. ¹¹Centre for Mental Health, Melbourne School of Population and Global Health, The University of Melbourne, Melbourne, VIC, Australia. ¹²School of Psychology, Deakin University, Geelong, VIC, Australia. ¹³Institute of Public Accountants, Melbourne, VIC, Australia. ¹⁴Research Division, WorkSafe Victoria, Geelong, VIC, Australia. ¹⁵School of Public Health and Preventive Medicine, Monash University, Melbourne, VIC, Australia. ¹⁶Beyond Blue, Melbourne, VIC, Australia. ¹⁷Mental Health First Aid Australia, Parkville, VIC, Australia.

Received: 20 April 2022 Accepted: 1 June 2022

Published online: 15 June 2022

References

- Storey DJ. Understanding the small business sector: Routledge; 2016.
- IPA-Deakin SME Research Centre: Australian Small Business White Paper. Melbourne; 2018.
- 8165.0 Counts of Australian Businesses, including Entries and Exits [<https://www.abs.gov.au/statistics/industry/industry-overview/australian-industry/latest-release#data-download>].
- Ramsden M, Bennett R. The benefits of external support to SMEs: “Hard” versus “soft” outcomes and satisfaction levels. *J Small Bus Enterp Dev*. 2005;12(2):227–43.
- icare and Everymind. White Paper: Can digital interventions help to improve mental health and reduce mental ill-health in small business? NSW; 2017.
- Cocker F, Martin A, Scott J, Venn A, Sanderson K. Psychological Distress, Related Work Attendance, and Productivity Loss in Small-to-Medium Enterprise Owner/Managers. *Int J Environ Res Public Health*. 2013;10(10):5062–82.
- Busch C, Dreyer R, Janneck M. Blended recovery and burnout coaching for small-business copreneurs. *Consulting Psychol J Pract Res*. 2021;73(1):65–87.
- Torrès O, Thurik R. Small business owners and health. *Small Bus Econ*. 2019;53(2):311–21.
- Martin A, Kilpatrick M, Scott J, Cocker F, Dawkins S, Brough P, et al. Protecting the Mental Health of Small-to-Medium Enterprise Owners: A Randomized Control Trial Evaluating a Self-Administered Versus Telephone Supported Intervention. *J Occup Environ Med*. 2020;62(7):503–10.
- Stansfeld S, Candy B. Psychosocial work environment and mental health - a meta-analytic review. *Scand J Work Environ Health*. 2006;32(6):443–62.
- Tennant C. Work-related stress and depressive disorders. *J Psychosom Res*. 2001;51:697–704.
- Report Department for Industry S, Energy and Resources: Small business and mental health: supporting small business when they are facing challenges. Australia; 2020.
- Blackburn R, Carey P, Tanewski G. Business advice by accountants to SMEs: relationships and trust. *Qual Res Account Manag*. 2018.
- LaMontagne AD, Martin A, Page KM, Reavley NJ, Noblet AJ, Milner AJ, et al. Workplace mental health: developing an integrated intervention approach. *BMC Psychiatry*. 2014;14(1):131.
- LaMontagne AD, Milner AJ, Allisey AF, Page KM, Reavley NJ, Martin A, et al. An integrated workplace mental health intervention in a policing context: Protocol for a cluster randomised control trial. *BMC Psychiatry*. 2016;16(1):49.
- Noblet A, LaMontagne AD. The role of workplace health promotion in addressing job stress. *Health Promot Int*. 2006;21(4):346–53.
- Noblet AJ, LaMontagne AD. The challenges of planning, implementing and evaluating interventions. In: Cartwright S, Cooper CL, editors. *The Oxford Handbook of Organizational Well-Being*. Oxford: Oxford University Press; 2009. p. 466–96.
- Morgan AJ, Ross A, Reavley NJ. Systematic review and meta-analysis of Mental Health First Aid training: Effects on knowledge, stigma, and helping behaviour. *PLoS One*. 2018;13(5):e0197102.
- Bovopoulos N, LaMontagne AD, Martin A, Jorm A. Exploring the role of mental health first aid officers in workplaces: A qualitative study using case study methodology. *Int J Workplace Health Manag*. 2018;11(6):366–81.
- Reavley NJ, Morgan AJ, Fischer J-A, Kitchener B, Bovopoulos N, Jorm AF. Effectiveness of eLearning and blended modes of delivery of Mental Health First Aid training in the workplace: randomised controlled trial. *BMC Psychiatry*. 2018;18(1):312.
- Reavley NJ, Morgan AJ, Fischer JA, Kitchener BA, Bovopoulos N, Jorm AF. Longer-term effectiveness of eLearning and blended delivery of Mental Health First Aid training in the workplace: 2-Year follow-up of a randomised controlled trial. *Internet Interv*. 2021;25:100434.
- Kitchener BA, Jorm AF. Mental health first aid training in a workplace setting: a randomized controlled trial [ISRCTN13249129]. *BMC Psychiatry*. 2004;4:23.
- Bond KS, Chalmers KJ, Jorm AF, Kitchener BA, Reavley NJ. Assisting Australians with mental health problems and financial difficulties: a Delphi study to develop guidelines for financial counsellors, financial institution staff, mental health professionals and carers. *BMC Health Serv Res*. 2015;15(1):218.
- Fowers BJ, Laurenceau J-P, Penfield RD, Cohen LM, Lang SF, Owens MB, et al. Enhancing relationship quality measurement: The development of the Relationship Flourishing Scale. *J Fam Psychol*. 2016;30(8):997.
- Reavley N, Jorm A. Stigmatizing attitudes towards people with mental disorders: findings from an Australian National Survey of Mental Health Literacy and Stigma. *Aust N Z J Psychiatry*. 2011;45:1086–93.
- Griffiths KM, Christensen H, Jorm AF. Predictors of depression stigma. *BMC Psychiatry*. 2008;8:25.
- Jorm A, Wright A. Influences on young people’s stigmatising attitudes towards peers with mental disorders: national survey of young Australians and their parents. *Br J Psychiatry*. 2008;192:144–9.
- Yap M, Reavley N, Jorm A. Is the use of accurate psychiatric labels associated with intentions and beliefs about responses to mental illness in a friend? Findings from two national surveys of Australian youth. *Epidemiol Psychiatr Sci*. 2015;24(1):54–68.
- Jorm AF, Kitchener BA, Sawyer MG, Scales H, Cvetkovski S. Mental health first aid training for high school teachers: a cluster randomized trial. *BMC Psychiatry*. 2010;10(1):51.
- Cherry M, McGrath D, Baumann C. Client Intimacy & Performance Advice: Determinants of Trust in the Public Accountant - SME Client Relationship. *Australas Account Bus Financ J*. 2018;12(1):3–32.
- Netemeyer RG, Warmath D, Fernandes D, Lynch JG Jr. How am I doing? Perceived financial well-being, its potential antecedents, and its relation to overall well-being. *J Consum Res*. 2018;45(1):68–89.
- Prawitz A, Garman ET, Sorhaundo B, O’Neill B, Kim J, Drentea P. InCharge financial distress/financial well-being scale: Development, administration, and score interpretation. *J Financ Couns Plan*. 2006;17(1).

33. Kessler RC, Barker PR, Colpe LJ, Epstein JF, Gfroerer JC, Hiripi E, et al. Screening for serious mental illness in the general population. *Arch Gen Psychiatry*. 2003;60(2):184–9.
34. Ware JE, Kosinski M, Keller SD. A 12-Item Short-Form Health Survey: Construction of Scales and Preliminary Tests of Reliability and Validity. *Med Care*. 1996;34(3):220–33.
35. Rickwood D, Dean F, Wilson C, Ciarrochi J. Young people's help-seeking for mental health problems. *Aust e-J Adv Mental Health*. 2005;4(3):1–34.
36. Glasgow RE, Vogt TM, Boles SM. Evaluating the public health impact of health promotion interventions: the RE-AIM framework. *Am J Public Health*. 1999;89(9):1322–7.
37. Holton EF III, Bates RA, Ruona WE. Development of a generalized learning transfer system inventory. *Hum Resour Dev Q*. 2000;11(4):333–60.
38. Floyd A, Moyer A. Effects of Participant Preferences in Unblinded Randomized Controlled Trials. *J Empir Res Hum Res Ethics*. 2010;1556-2654:81–93.
39. Wortman C, Hendricks M, Hills J. Factors affecting participant reaction to random assignment to ameliorative social programs. *J Pers Soc Psychol*. 1976;33(3):256–66.
40. Altman DG: Avoiding bias in trials in which allocation ratio is varied. *JLL Bulletin: Commentaries on the history of treatment evaluation 2017*.
41. Cohen J. *Statistical power analysis for the behavioral sciences*. 2nd ed: Lawrence Erlbaum Associates; 1988.
42. Klee M, Groenvold M, Machin D. Quality of life of Danish women: population-based norms of the EORTC QLQ-C30. *Qual Life Res*. 1997;6:27–34.
43. Nakagawa S, Cuthill I. Effect size, confidence interval and statistical significance: a practical guide for biologists. *Biol Rev Camb Philos Soc*. 2007;82:591–605.

Publisher's Note

Springer Nature remains neutral with regard to jurisdictional claims in published maps and institutional affiliations.

Ready to submit your research? Choose BMC and benefit from:

- fast, convenient online submission
- thorough peer review by experienced researchers in your field
- rapid publication on acceptance
- support for research data, including large and complex data types
- gold Open Access which fosters wider collaboration and increased citations
- maximum visibility for your research: over 100M website views per year

At BMC, research is always in progress.

Learn more biomedcentral.com/submissions

