



# Numerical Experiments on Extreme Waves Through Oblique–Soliton Interactions

J. Choi<sup>1</sup> · O. Bokhove<sup>2</sup> · A. Kalogirou<sup>3</sup> · M. A. Kelmanson<sup>2</sup>

Received: 18 February 2022 / Accepted: 14 April 2022 / Published online: 2 June 2022  
© The Author(s) 2022

## Abstract

Extreme water-wave motion is investigated analytically and numerically by considering two-soliton and three-soliton interactions on a horizontal plane. We successfully determine numerically that soliton solutions of the unidirectional Kadomtsev–Petviashvili equation (KPE), with equal far-field individual amplitudes, survive reasonably well in the bidirectional and higher-order Benney–Luke equations (BLE). A well-known exact two-soliton solution of the KPE on the infinite horizontal plane is used to seed the BLE at an initial time, and we confirm that the KPE-fourfold amplification approximately persists. More interestingly, a known three-soliton solution of the KPE is analysed further to assess its eight- or ninefold amplification, the latter of which exists in only a special and difficult-to-attain limit. This solution leads to an extreme splash at one point in space and time. Subsequently, we seed the BLE with this three-soliton solution at a suitable initial time to establish the maximum amplification: it is approximately 7.8 for a KPE amplification of 8.4. Herein, the computational domain and solutions are truncated approximately to a fully periodic or half-periodic channel geometry of sufficient size, essentially leading to cnoidal-wave solutions. Moreover, special geometric (finite-element) variational integrators in space and time have been used in order to eradicate artificial numerical damping of, in particular, wave amplitude.

---

✉ A. Kalogirou  
Anna.Kalogirou@nottingham.ac.uk

J. Choi  
junho.choi@skku.edu

O. Bokhove  
O.Bokhove@leeds.ac.uk

M. A. Kelmanson  
M.Kelmanson@leeds.ac.uk

- 1 Institute of Basic Science, Sungkyunkwan University, 2066 Seobu-ro, Suwon-si, Gyeonggi-do, Republic of Korea
- 2 School of Mathematics, University of Leeds, Leeds LS2 9JT, UK
- 3 School of Mathematical Sciences, University of Nottingham, Nottingham NG7 2RD, UK

**Keywords** Abnormal waves · Benney–Luke equations · Kadomtsev–Petviashvili equation

## 1 Introduction

Of crucial practical importance in the maritime sector is that structures such as, e.g., ships, wind-turbines and harbour walls should be constructed so as to be able to resist extreme events such as freak waves, primarily to ensure the safety of the crew and staff that maintain and/or occupy such structures. Additionally, at the stage of structural design and manufacture, an a priori knowledge, even estimated, of the external forces to be anticipated is essential in terms of both improving safety and minimising repair costs. It is within this context that the motivation for the present work lies: that of augmenting both existing comprehension and, where possible, quantification, of the formation and dynamics of freak waves, with the goal of ameliorating safety and cost-effectiveness in a real-world maritime setting.

Abnormal, freak or rogue waves are roughly defined as rare waves with an extreme height  $H_r$  larger than twice the ambient wave height  $H_a$ , so that the abnormality index  $AI = H_r/H_a > 2$ . More advanced definitions are given in [9, 17]. Such rogue waves can be found at sea, on lakes or in laboratory wave tanks at larger or smaller scales, relative to the ambient wave height, in sole terms of which they are defined. In general, however, rogue waves are associated with rare and extremely large waves at sea, either in the open ocean or near the coast [27]. These waves are rare in that they may not often occur and can emerge suddenly out of a sea of ambient waves. There are various approaches for explaining the rare-event or extreme-value statistics of rogue waves, with some theories attributing third-order nonlinear effects as being important for describing the statistical distributions simulated and observed [26], and alternative theories showing that the observed statistics are described well by linear wave-height models and “second-order narrow-band models” [30]. Further comparison with oceanic measurements is needed to resolve which theories are most convincing in explaining extreme-wave statistics and predictions.

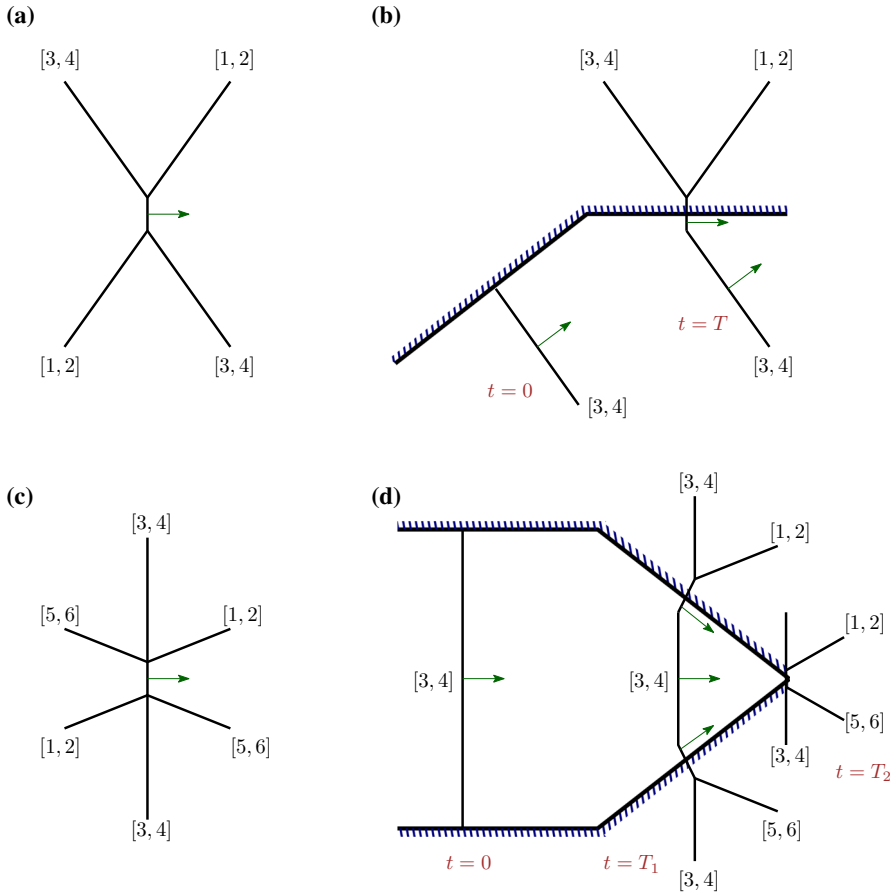
Of present interest is recent research [3] in which spatio-temporal observations of rogue waves reveal that they are more common than can be deduced from point measurements and, additionally, that crest-trough correlations are highly significant [12] in predicting rogue-wave occurrence. Herein, the constructive interference of dispersive three-dimensional wave interactions in combination with effects of second-order bound modes, described by the skewness, have been found to contribute in a major way to the probability density function of spatio-temporal extreme (nonlinear) crest heights. The three-dimensionality in particular results from sea states being short-crested, involving crossing seas stemming from interacting waves with two (or three) distinct main directions, as argued by Benetazzo et al. [3]. Given the high wave amplitudes associated to rogue waves, Hafner et al. [12] perhaps surprisingly conclude that linear superposition forms the main pathway to predicting “everyday” rogue waves with minor corrections due to weak nonlinearity. They therefore argue that the term “rogue wave” should perhaps be restricted to more exclusive and exceptionally high and steep waves. While we will not consider rogue-wave statistics, this study is inspired

by the aforementioned rogue-wave investigations of short-crested waves of extremely high amplitude. We will focus on a particular type of extreme wave emerging in crossing seas, with waves described analytically as solutions of the Kadomtsev–Petviashvili equation (KPE) [15] and resolved numerically in higher-order wave models, for which the KPE is an asymptotic approximation.

Water waves are commonly modelled by the potential-flow wave equations (e.g., [24, 31]), using incompressible flow with a free surface in the absence of vorticity so that the three-dimensional velocity field can be expressed as the gradient of a velocity potential, or by asymptotic approximations thereof. Both direct representations, as partial differential equations, or spectral representations are used of these potential-flow equations [22]. Solutions to two approximations to these potential-flow equations will be considered here: the bidirectional Benney–Luke equations (BLE) [4, 7, 28], and the unidirectional KPE [15, 18]. The KPE is also an asymptotic approximation of the BLE. The advantage of using this simplified KPE is that it has exact solutions in the form of web solitons [1, 18]. The KPE is a two-dimensional extension of the one-dimensional Korteweg–De-Vries (KdV) equation, based on introducing or keeping weak interactions in the other horizontal, i.e. lateral, direction [15]. The famous KdV-sech soliton is therefore also a single-line soliton solution of the KPE. Web solutions of the KPE comprise interacting line solitons, each consisting of such a sech-solution with with an orientation differing from that of the others in the far field on an infinite plane. As per the KdV-equation, the KPE also allows periodic wave solutions in the form of cnoidal waves (but these exist for the KPE in two horizontal dimensions), leading to high-amplitude short-crested wave solutions where these “individual” cnoidal waves interact with or cross one another [13]. Such short-crested high-amplitude crossing waves have also been observed, both at sea and in the laboratory [13, 21], which links them to some extent to the rogue waves in crossing seas discussed above.

Alternatively, certain two-soliton solutions of the KPE on the infinite plane can be used to describe approximately the interaction of one soliton travelling along a wall encountering, and thus interacting with, a corner or sharp turn in that wall, see Fig. 1a, b). This corresponds to a certain KPE-solution of two-line solitons, with the solid wall seen as the line of symmetry where the normal velocity equals zero. For a certain angle of this corner or turn, the amplification of an incoming soliton of amplitude  $\tilde{A}$  can be shown analytically to become fourfold over time [18, 25], i.e. to reach an asymptotic amplitude of  $4\tilde{A}$  when it has travelled for a while along the straight wall after the turn; for the two interacting line solitons this fourfold amplification is sustained and propagating on an infinite plane. One difference between the infinite-plane and finite-domain solutions is that in the latter case it takes time for the solution interacting with the wall to reach asymptotically the fourfold amplification [18, 25]. Note that the KPE is unidirectional so the introduction of actual walls is not allowed, since there cannot be any factual reflection, and the above conclusions are based on comparison with laboratory experiments [23] as well as on numerical simulations of the BLE [11].

As part of a fluid-dynamics’ demonstration conducted in 2010 [8], it was shown that a soliton-complex travelling along a channel led to a tenfold amplification into a so-called soliton-splash at the apex of a linear contraction found at the channel end. A simplified set-up instead considers a sech-soliton travelling along the channel which, when interacting with the two turns at the contraction entrance, can lead to two



**Fig. 1** Sketches of (a, b) two or (c, d) three interacting line solitons. (a, c) portray the infinite-plane cases, (b) shows a soliton turning a corner, and (d) shows a soliton running into a linear contraction. The various far-field line solitons involved, e.g. [1, 2], [3, 4], [5, 6] have been indicated, including their phase shift due to interactions

waves growing towards this maximum fourfold amplification in the KPE, and these two colliding amplified waves can in turn form the soliton splash at the apex, see also Fig. 1c, d. Of course, in the closed contraction, reflection occurs at and around the apex, so that the amplification could be larger than in the infinite-plane KPE-analogue of a similar set-up. In the latter case on an infinite plane, three-line solitons will be interacting, with the two interactions of two-times-two-line solitons colliding at one point in space and time into a localised soliton splash, which subsequently decomposes again into two-times-two-line solitons.

Several researchers have analysed such three-soliton interactions on an infinite horizontal plane within the KPE framework. Below follows a brief overview. Biondini et al. [5] analysed the interactions of line solitons that lead to large amplitudes. For three interacting solitons, six wavenumbers are needed, which can be ordered

as  $k_1 < k_2 < k_3 < 0 < k_4 < k_5 < k_6$  as we will see later. Biondini et al. [5] state an upper bound of the maximum splash amplitude of  $\frac{1}{2}(k_{\max} - k_{\min})^2$  with far-field solitons of amplitude  $\frac{1}{2}$ , which we will analyse in detail for a three-soliton interaction (note that here  $k_{\max} = k_6$  and  $k_{\min} = k_1$ ). The three-line solitons have amplitudes  $\frac{1}{2}(k_2 - k_1)^2$ ,  $\frac{1}{2}(k_6 - k_5)^2$ ,  $\frac{1}{2}(k_4 - k_3)^2$  in the far field. However, whether the upper-bound maximum is obtained depends on the details of the soliton configuration. Kodama [19, 20] calculated the three-line-soliton interactions using the values  $(k_1, k_2, k_3, k_4, k_5, k_6) = (-1.501, -0.501, -0.5, 0.5, 0.501, 1.501)$ , leading to a maximum amplification of circa nine times, in fact 8.6; this is in line with Biondini's estimate given above, leading here to a just-above-ninefold amplification (for a video of such a splash in a miniature-tank set-up see [32]). Using these coefficients, Baker [2] and Gidel [10] checked and reproduced these calculations. Overarching questions are whether such high-amplitude solutions of the KPE will survive as approximate solutions of the potential-flow water wave equations, or higher-order bidirectional approximations thereof, and, furthermore, to what extent such amplifications can be observed in reality?

The fourfold amplification of a soliton against a channel bend as counterpart of two interacting line solitons has been observed in experiments. Li et al. [23] observed a nearly threefold amplification in Mach-stem reflection, i.e. the two-line-soliton analogue of a soliton travelling along a wall and encountering a corner. In Gidel et al. [11], numerical simulations were performed to check whether the fourfold amplification predicted in the KPE is valid for the interaction of a soliton encountering a corner in a wall, while using the more accurate, higher-order (in wave amplitude and dispersion parameters) bidirectional BLE. Such simulations are more challenging than imposing the solution for two-line solitons as an initial-value problem, because the amplitude of the soliton after it turns into a Mach-stem wave at the corner grows only slowly, over time, to its asymptotic value. Such simulations of the Benney–Luke system showed that the maximum amplification obtained reached 3.6, somewhat short of the fourfold amplification in the KPE or the amplification of 3.9 observed for simulations in which the KPE solution was imposed as a pair of initial values in the BLE [1].

The goals of the current paper are “extreme-wave” extensions of these investigations—of two interacting line solitons with equal far-field amplitudes—into the realm of three interacting line solitons of equal far-field amplitudes. The strategy to achieve these goals is as follows:

- to derive the conditions for which three-line solitons of equal amplitude  $\tilde{A}$  in the far field reach a maximum-amplitude factor of nine, i.e. amplitude  $9\tilde{A}$  at one point in space and time, as solution of the KPE; and,
- to establish numerically the extent to which this three-line-soliton solution of the asymptotic KPE remains valid in the bidirectional and more accurate higher-order BLE.

The outline of the paper is as follows. The BLE and KPE are introduced in Sect. 2 as well as their respective coordinate systems and the relation between them. The three-line-soliton solution of the KPE is introduced in Sect. 3 in order to allow initialisation within the BLE. Moreover, a proof of the maximum amplification of these solitons is given and detailed further in an Appendix. Numerical simulations of the amplification

of interacting line solitons in the BLE, initialised with exact solutions of the KPE, are shown and interpreted in Sect. 4 before we draw a conclusion in Sect. 5.

## 2 Mathematical Models

In this section, two mathematical approaches for modelling water waves are considered—the Benney–Luke equations and the Kadomtsev–Petviashvili equation—including the scalings used to arrive at a standardised form.

### 2.1 The Benney–Luke Equations

We define a Cartesian coordinate system  $(x, y, z)$ , in which  $(x, y)$  are the horizontal coordinates and  $z$  is the vertical coordinate, the latter of which is positive above a flat sea bed at  $z = 0$ . In dimensionless form, the water depth is described by  $h(x, y, t) = 1 + \epsilon\eta(x, y, t)$ , where  $t$  is time,  $\eta(x, y, t)$  is the free-surface deviation from the rest depth, and  $\epsilon$  is an amplitude parameter. The domain is denoted by  $\Omega$ , with  $z \in [0, h(x, y, t)]$  and horizontal extent  $\Omega_h$ . In deriving the BLE, potential-flow theory, which considers the fluid as irrotational, is applied. This allows us to write the fluid velocity in terms of a scalar velocity potential  $\phi$  through  $\mathbf{u}(x, y, z, t) = \nabla_3\phi(x, y, z, t)$ , where  $\nabla_3 = (\partial_x, \partial_y, \partial_z)$  is the three-dimensional Cartesian gradient operator. The corresponding gradient operator in two-dimensional horizontal space will be denoted by  $\nabla = (\partial_x, \partial_y)$ .

The Benney–Luke approximation is based on the assumption of long and shallow water waves and allows us to reduce the dynamics to two-dimensions by tracking only the free-surface evolution and the velocity potential at a specified height. The BLE were first derived in [4] and in a variational manner also in [7, 11, 28]. Only these variational versions of the BLE will be considered here. The non-dimensional governing BLE are given by

$$\partial_t \Phi - \frac{\mu}{2} \partial_t \nabla^2 \Phi + \frac{\epsilon}{2} |\nabla \Phi|^2 + \eta = 0 \quad \text{in } \Omega_h, \quad (1a)$$

$$\partial_t \eta - \frac{\mu}{2} \partial_t \nabla^2 \eta + \nabla \cdot ((1 + \epsilon\eta) \nabla \Phi) - \frac{2\mu}{3} \nabla^4 \Phi = 0 \quad \text{in } \Omega_h, \quad (1b)$$

$$\mathbf{n} \cdot \nabla \Phi = 0 \quad \text{on } \partial\Omega_h, \quad (1c)$$

$$\mathbf{n} \cdot \nabla (\nabla^2 \Phi) = 0 \quad \text{on } \partial\Omega_h, \quad (1d)$$

where  $\Phi(x, y, t) = \phi(x, y, z = 0, t)$  is the sea-bed potential. The two boundary conditions (1c), (1d) represent no-flux conditions at the boundary of the domain  $\partial\Omega_h$ , where  $\mathbf{n}$  is the outward unit normal vector. The Benney–Luke equations include two parameters,  $\epsilon$  and  $\mu$ , which are both assumed to be small in the current approximation; in particular, the amplitude parameter  $\epsilon$  is defined as the ratio of wave amplitude over the mean water depth, and  $\mu$  is a dispersion parameter proportional to ratio of wavelength over water depth.

The energy of the Benney–Luke system in (1) is defined by

$$E(t) = \int_{\Omega_h} \left[ \frac{1}{2} \eta^2 + \frac{1}{2} (1 + \epsilon \eta) |\nabla \Phi|^2 + \frac{\mu}{3} (\nabla^2 \Phi)^2 \right] dx dy, \tag{2}$$

where the first term in the integrand is the potential energy and the remaining terms therein represent the kinetic energy of the system. The total energy defined above is conserved in time, with a proof given in Appendix A.

### 2.2 The Kadomtsev–Petviashvili Equation

The Kadomtsev–Petviashvili equation is a two-dimensional analogue of the KdV equation and describes unidirectional propagation of waves in two dimensions. While the KdV equation is appropriate for wave propagation in the  $x$ -direction, the KPE also includes weak diffraction effects in the  $y$ -direction (as can be seen below in (3) where the  $y$ -scale is smaller than the  $x$ -scale). The KPE can be obtained from the BLE by using the following transformation (see also the combined asymptotic and variational approach in [7])

$$\tilde{X} = \sqrt{\frac{\epsilon}{\mu}} (x - t), \quad \tilde{Y} = \frac{\epsilon}{\sqrt{\mu}} y, \quad \tilde{\tau} = \epsilon \sqrt{\frac{\epsilon}{\mu}} t, \tag{3}$$

and taking  $\mu = \epsilon^2$ , where the domain of validity of the new variables is  $(\tilde{X}, \tilde{Y}, \tilde{\tau}) \in \mathbb{R}^2 \times \mathbb{R}^+$ . Subsequently, we introduce the formal perturbation expansions

$$\eta = \tilde{u} + \mathcal{O}(\epsilon^2), \quad \Phi = \sqrt{\epsilon} \left( \tilde{\Psi} + \mathcal{O}(\epsilon^2) \right), \tag{4}$$

where  $\tilde{\Psi}_{\tilde{X}} = \tilde{u}$ . Substituting these expansions into Eqs. (1a), (1b) and retaining terms up to order  $\epsilon^2$ , yields the leading-order equation, cf. [11]

$$\partial_{\tilde{X}} \left( 2\partial_{\tilde{\tau}} \tilde{u} + 3\tilde{u} \partial_{\tilde{X}} \tilde{u} + \frac{1}{3} \partial_{\tilde{X} \tilde{X} \tilde{X}} \tilde{u} \right) + \partial_{\tilde{Y} \tilde{Y}} \tilde{u} = 0. \tag{5}$$

We finally take another transformation in order to cast Eq. (5) in the “standard” KPE form [18, 21], as follows

$$X = \left( \frac{3}{\sqrt{2}} \right)^{1/3} \tilde{X}, \quad Y = \left( \frac{3}{\sqrt{2}} \right)^{2/3} \tilde{Y}, \quad \tau = \sqrt{2} \tilde{\tau}, \quad u = \left( \frac{3}{4} \right)^{1/3} \tilde{u}; \tag{6}$$

applying this on Eq. (5) results in the well-known KPE [15] of the form

$$\partial_X (4\partial_\tau u + 6u\partial_X u + \partial_{XXX} u) + 3\partial_{YY} u = 0. \tag{7}$$

The coordinates and variables in the KPE (7) are connected to those in the BLE (1) through the rescaling below, obtained by combining scalings (3) and (6), with  $\mu = \epsilon^2$ ,

and given by

$$x = \sqrt{\frac{\mu}{\epsilon}} \left( \frac{\sqrt{2}}{3} \right)^{1/3} X + \frac{1}{\epsilon} \sqrt{\frac{\mu}{2\epsilon}} \tau, \quad y = \frac{\sqrt{\mu}}{\epsilon} \left( \frac{\sqrt{2}}{3} \right)^{2/3} Y, \quad t = \frac{1}{\epsilon} \sqrt{\frac{\mu}{2\epsilon}} \tau, \quad (8a)$$

$$\eta(x, y, t) = \left( \frac{4}{3} \right)^{1/3} u(X, Y, \tau), \quad (8b)$$

$$\Phi(x, y, t) = 2\sqrt{\epsilon} \left( \frac{4\sqrt{2}}{9} \right)^{1/3} \partial_X \ln(K(X, Y, \tau)), \quad (8c)$$

which will be used later to set up the KPE-solutions in  $X, Y, \tau$ -space for the BLE. The function  $K(X, Y, \tau)$  emerges in the next section as  $u(X, Y, \tau) \equiv 2\partial_{XX} \ln(K(X, Y, \tau))$ .

### 3 Maximum Amplification with Three Equal-Amplitude Line Solitons

After transforming the KPE in the standard form (7), line-soliton solutions of the following form can be constructed using Hirota's transformation [14]

$$u(X, Y, \tau) = 2\partial_{XX} \ln(K(X, Y, \tau)) = 2 \left[ \frac{\partial_{XX} K}{K} - \left( \frac{\partial_X K}{K} \right)^2 \right], \quad (9)$$

where function  $K(X, Y, \tau)$  can be obtained from the Wronskian

$$K(X, Y, \tau) = \begin{vmatrix} f_1 & f_1^{(1)} & \dots & f_1^{(N-1)} \\ f_2 & f_2^{(1)} & \dots & f_2^{(N-1)} \\ \vdots & \vdots & & \vdots \\ f_N & f_N^{(1)} & \dots & f_N^{(N-1)} \end{vmatrix}, \quad (10a)$$

in which  $f_i^{(n)}$  denotes the  $n$ th partial derivative of  $f_i$  with respect to  $X$ , and the  $f_i$  are such that they satisfy the linear equations  $\partial_Y f_i = \partial_{XX} f_i$  and  $\partial_\tau f_i = -\partial_{XXX} f_i$  [5, 18]. Particular line-soliton solutions are obtained by taking

$$f_i = \sum_{j=1}^M a_{ij} e^{\theta_j}, \quad (10b)$$

where  $\theta_j = k_j X + k_j^2 Y - k_j^3 \tau$ , with coefficients  $k_j$  being ordered as  $k_1 < k_2 < \dots < k_M$ , and the  $a_{ij}$ 's are the elements of an  $N \times M$  matrix  $\mathcal{A}$  (see also [18]).

The solution written in the form (9) is also called a  $(N_-, N_+)$ -soliton, which comprises  $N_- = M - N$  line solitons as  $Y \rightarrow -\infty$  and  $N_+ = N$  line solitons as  $Y \rightarrow \infty$  [18]. Therefore single-line solitons have  $(N, M) = (1, 2)$ , two-line solitons  $(N, M) = (2, 4)$  and three-line solitons  $(N, M) = (3, 6)$ , the latter explaining why we had used six  $k_j$ 's, for  $j = 1, 2, \dots, 6$ , in the introduction. These three cases are now



discussed in turn, so as to set up the analysis and expression for the three-line-soliton case with equal amplitudes in the far field.

### 3.1 Single-Line Soliton

For the single-line soliton, we use  $N = 1, M = 2$  in Eqs. (10) and take  $a_{11} = 1, a_{12} = a > 0$ , resulting in  $K = f_1 = e^{\theta_1} + a e^{\theta_2}$ . The solution then becomes

$$\begin{aligned} u(X, Y, \tau) &= \frac{1}{2}(k_1 - k_2)^2 \operatorname{sech}^2 \frac{1}{2}(\theta_1 - \theta_2 - \ln a) \\ &= \frac{(k_1 - k_2)^2}{2} \operatorname{sech}^2 \frac{1}{2}((k_1 - k_2)X + (k_1^2 - k_2^2)Y - (k_1^3 - k_2^3)\tau - \ln a), \end{aligned} \tag{11}$$

which is a line soliton with centreline at  $X + (k_1 + k_2)Y = (k_1^2 + k_1k_2 + k_2^2)\tau + (\ln a)/(k_1 - k_2)$ , as found by setting the argument of the  $\operatorname{sech}^2$  function to zero. Here, the parameter  $a$  essentially determines the location of the soliton solution. Note that when  $k_1 + k_2 = 0$  and  $k_1 < k_2$ , this soliton propagates in the positive  $X$ -direction and its crest lies parallel to the  $Y$ -axis, an observation used later for the case with three-line solitons.

### 3.2 Two Interacting Line or O-Solitons of Equal Amplitude

The two-line soliton has the following set-up with the  $2 \times 4$  matrix

$$A = \begin{pmatrix} 1 & a & 0 & 0 \\ 0 & 0 & 1 & b \end{pmatrix}, \tag{12}$$

such that

$$f_1 = e^{\theta_1} + a e^{\theta_2}, \quad f_2 = e^{\theta_3} + b e^{\theta_4}, \tag{13}$$

where  $a, b$  are positive constants. Hence, the interim function  $K$  becomes

$$\begin{aligned} K(X, Y, \tau) &= (k_3 - k_1) e^{\theta_1 + \theta_3} + a(k_3 - k_2) e^{\theta_2 + \theta_3} \\ &\quad + b(k_4 - k_1) e^{\theta_1 + \theta_4} + ab(k_4 - k_2) e^{\theta_2 + \theta_4} \end{aligned} \tag{14a}$$

$$\begin{aligned} &= (k_3 - k_1) e^{\theta_3} \left( e^{\theta_1} + a \frac{(k_3 - k_2)}{(k_3 - k_1)} e^{\theta_2} \right) \\ &\quad + b(k_4 - k_1) e^{\theta_4} \left( e^{\theta_1} + a \frac{(k_4 - k_2)}{(k_4 - k_1)} e^{\theta_2} \right) \end{aligned} \tag{14b}$$

$$\begin{aligned} &= (k_3 - k_1) e^{\theta_1} \left( e^{\theta_3} + b \frac{(k_4 - k_1)}{(k_3 - k_1)} e^{\theta_4} \right) \\ &\quad + a(k_3 - k_2) e^{\theta_2} \left( e^{\theta_3} + b \frac{(k_4 - k_2)}{(k_3 - k_2)} e^{\theta_4} \right), \end{aligned} \tag{14c}$$

and the parameters  $k_{1,2,3,4}$  satisfy the ordering  $k_1 < k_2 < 0 < k_3 < k_4$  without loss of generality. On the one hand, in the limit  $Y \rightarrow \infty$  when  $X > 0$ , the second term in (14b) dominates since  $k_4 > k_3$ , which recovers the [1, 2] single-line soliton

$$u_{[1,2]}(X, Y, \tau) = \frac{1}{2}(k_2 - k_1)^2 \operatorname{sech}^2 \frac{1}{2}(\theta_1 - \theta_2 - \ln \tilde{a}). \quad (15a)$$

On the other hand, taking the limit  $Y \rightarrow \infty$  when  $X < 0$  causes the second term in (14c) to dominate since  $k_2 > k_1$ , and we obtain the [3, 4] single-line soliton

$$u_{[3,4]}(X, Y, \tau) = \frac{1}{2}(k_4 - k_3)^2 \operatorname{sech}^2 \frac{1}{2}(\theta_3 - \theta_4 - \ln \tilde{b}), \quad (15b)$$

with shift factors

$$\tilde{a} = a \left( \frac{k_4 - k_2}{k_4 - k_1} \right) \quad \text{and} \quad \tilde{b} = b \left( \frac{k_4 - k_2}{k_3 - k_2} \right). \quad (16)$$

The above arguments also hold when  $k_1 < k_2 < k_3 = -k_4 < 0 < k_4$  or  $k_1 = -k_2 < 0 < k_2 < k_3 < k_4$ , in the case where one of the [3, 4] or [1, 2] single-line soliton propagates in the positive  $X$ -direction. We refer to these cases as limits in the three-line soliton case.

Defining the far-field soliton amplitudes by

$$A_{[1,2]} = \frac{1}{2}(k_2 - k_1)^2, \quad A_{[3,4]} = \frac{1}{2}(k_4 - k_3)^2, \quad (17)$$

and assuming the solitons have equal amplitudes  $A_{[1,2]} = A_{[3,4]} = \tilde{A}$ , Kodama [18] (and others) showed that

$$A_{[1,2]} + A_{[3,4]} \leq \max_{(X,Y,\tau)} u(X, Y, \tau) \leq A_{[1,2]} + A_{[3,4]} + 2 \frac{1 - \sqrt{\Delta_O}}{1 + \sqrt{\Delta_O}} \sqrt{A_{[1,2]} A_{[3,4]}}, \quad (18a)$$

with

$$\Delta_O = \frac{(k_3 - k_2)(k_4 - k_1)}{(k_4 - k_2)(k_3 - k_1)}, \quad (18b)$$

so that the amplification lies between two and four, since  $0 \leq \Delta_O \leq 1$ . The minimum (twofold) amplitude is reached when  $k_1 = k_2$  or  $k_3 = k_4$ , that is for  $\Delta_O = 1$ , while the maximum (fourfold) amplification is reached when  $k_2 = k_3$ , i.e. for  $\Delta_O = 0$ . In the latter case of maximum amplification, (15a) and (15b) diverge but the general solution (14a) does not. Hence, for later use we set  $a = b = 1$ ,  $k_4 = -k_1$  and  $k_3 = k_2 = 0$ , so the dominant balance in (14) for  $X \gg 1$ ,  $Y \gg 1$  is

$$K \approx 2k_4 e^{\theta_1 + \theta_4} + k_4 e^{\theta_4} = 2\sqrt{2} k_4 e^{\theta_4 + \frac{\theta_1}{2}} \cosh \frac{1}{2}(\theta_1 + \ln 2), \quad (19a)$$

and for  $X \ll -1, Y \gg 1$  we find

$$K \approx 2k_4 e^{\theta_1 + \theta_4} + k_4 e^{\theta_1} = 2\sqrt{2} k_4 e^{\theta_1 + \frac{\theta_4}{2}} \cosh \frac{1}{2}(\theta_4 + \ln 2). \quad (19b)$$

### 3.3 Three Interacting Line Solitons of Equal Amplitude

It is possible to find an analytical exact solution of the KPE that describes the interaction of three solitary waves, as shown in [2, 18]. Such a solution is called a (3, 3)-soliton and it follows from equation (9) with  $N = 3, M = 6$ , and using the matrix

$$A = \begin{pmatrix} 1 & a & 0 & 0 & 0 & 0 \\ 0 & 0 & 1 & b & 0 & 0 \\ 0 & 0 & 0 & 0 & 1 & c \end{pmatrix}, \quad (20)$$

where the positive constants  $a, b, c$  shift the location of the solution; in what follows we take  $a = b = c = 1$  which corresponds to no shift. The functions  $f_i, i = 1, 2, 3$  in (10b) are hence given by

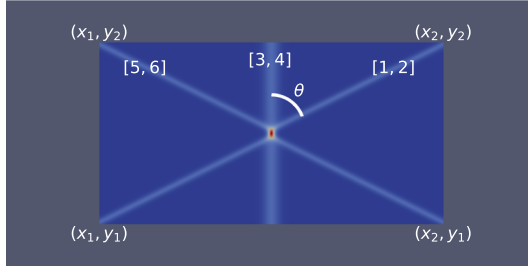
$$f_1 = e^{\theta_1} + a e^{\theta_2}, \quad f_2 = e^{\theta_3} + b e^{\theta_4}, \quad f_3 = e^{\theta_5} + c e^{\theta_6}, \quad (21)$$

and are such that they would each form a single-line soliton when considered alone, as described in Sect. 3.1. The interim function  $K$  in (10a) then becomes

$$\begin{aligned} K(X, Y, \tau) = & (k_3 k_5^2 - k_5 k_3^2 - k_1 k_5^2 + k_1 k_3^2 + k_5 k_1^2 - k_3 k_1^2) e^{\theta_1 + \theta_3 + \theta_5} \\ & + a(k_3 k_5^2 - k_5 k_3^2 - k_2 k_5^2 + k_2 k_3^2 + k_5 k_2^2 - k_3 k_2^2) e^{\theta_2 + \theta_3 + \theta_5} \\ & + c(k_3 k_6^2 - k_6 k_3^2 - k_1 k_6^2 + k_1 k_3^2 + k_6 k_1^2 - k_3 k_1^2) e^{\theta_1 + \theta_3 + \theta_6} \\ & + ac(k_3 k_6^2 - k_6 k_3^2 - k_2 k_6^2 + k_2 k_3^2 + k_6 k_2^2 - k_3 k_2^2) e^{\theta_2 + \theta_3 + \theta_6} \\ & + b(k_4 k_5^2 - k_5 k_4^2 - k_1 k_5^2 + k_1 k_4^2 + k_5 k_1^2 - k_4 k_1^2) e^{\theta_1 + \theta_4 + \theta_5} \\ & + ab(k_4 k_5^2 - k_5 k_4^2 - k_2 k_5^2 + k_2 k_4^2 + k_5 k_2^2 - k_4 k_2^2) e^{\theta_2 + \theta_4 + \theta_5} \\ & + bc(k_4 k_6^2 - k_6 k_4^2 - k_1 k_6^2 + k_1 k_4^2 + k_6 k_1^2 - k_4 k_1^2) e^{\theta_1 + \theta_4 + \theta_6} \\ & + abc(k_4 k_6^2 - k_6 k_4^2 - k_2 k_6^2 + k_2 k_4^2 + k_6 k_2^2 - k_4 k_2^2) e^{\theta_2 + \theta_4 + \theta_6} \end{aligned} \quad (22a)$$

$$\begin{aligned} \equiv & A_{135} e^{\theta_1 + \theta_3 + \theta_5} + \underline{A_{235}} e^{\theta_2 + \theta_3 + \theta_5} \\ & + \underline{A_{136}} e^{\theta_1 + \theta_3 + \theta_6} + A_{236} e^{\theta_2 + \theta_3 + \theta_6} \\ & + A_{145} e^{\theta_1 + \theta_4 + \theta_5} + \underline{A_{245}} e^{\theta_2 + \theta_4 + \theta_5} \\ & + \underline{A_{146}} e^{\theta_1 + \theta_4 + \theta_6} + \underline{A_{246}} e^{\theta_2 + \theta_4 + \theta_6}, \end{aligned} \quad (22b)$$

with the following conditions satisfied between parameters  $k_j, j = 1, \dots, 6: k_1 < k_2 < k_3 < 0 < k_4 < k_5 < k_6$  (marked pairs indicate equal pre-factors, i.e.  $A_{135} = A_{246}, A_{235} = A_{245}, A_{136} = A_{146}$  and  $A_{236} = A_{145}$  for  $k_1 = -k_6, k_2 = -k_5, k_3 =$



**Fig. 2** Definition of the subscript notation for three interacting solitary waves. Subscripts [5, 6], [1, 2], and [3, 4] indicate solitary waves extending from top-left to bottom-right in the  $(x, y)$ -plane, from top-right to bottom-left, and from top to bottom, respectively. The angle  $\theta$  is defined between the positive  $y$ -axis and the solitary wave [1, 2]. Points  $(x_1, y_1)$ ,  $(x_2, y_1)$ ,  $(x_1, y_2)$ , and  $(x_2, y_2)$  are the southwest, southeast, northwest, and northeast corners, respectively

$-k_4$ ; more details will be provided later in Sect. 3.4). Note that, without loss of generality, herein the middle line soliton is aligned to propagate in the positive  $X$ -direction, leading to the choice  $k_3 + k_4 = 0$ . We also note that the above ordering of parameters  $k_j$  has been directed by the nature of the far-field expressions of the line solitons, which is explained next.

By using the KPE solution (9) in the case of three-line solitons, we can find approximate solutions for each solitary wave far away from the region of interaction. This can be achieved by considering waves along lines  $X + (k_i + k_j)Y = c_0$ , for some constant  $c_0$  and for  $|Y| \rightarrow \infty$ , where the pair  $(i, j)$  takes the values (1, 2), (3, 4), or (5, 6), and keeping only the dominant exponential terms in (22). The three solitary wave solutions in separation, i.e. far from the interaction region, are then approximately given by the following expressions (see also Sect. 3.4)

$$u_{[1,2]} \approx \frac{1}{2}(k_2 - k_1)^2 \operatorname{sech}^2 \frac{1}{2} (\Theta_{[1,2]} - \ln G_{[1,2]}), \quad \text{for } XY \gg 1, \quad (23a)$$

$$u_{[5,6]} \approx \frac{1}{2}(k_6 - k_5)^2 \operatorname{sech}^2 \frac{1}{2} (\Theta_{[5,6]} - \ln G_{[5,6]}), \quad \text{for } XY \ll -1, \quad (23b)$$

$$u_{[3,4]} \approx \frac{1}{2}(k_4 - k_3)^2 \operatorname{sech}^2 \frac{1}{2} (\Theta_{[3,4]}), \quad \text{for } X = 0, \quad (23c)$$

with

$$\Theta_{[i,j]} = \theta_i - \theta_j = (k_i - k_j) \left( X + (k_i + k_j)Y - (k_i^2 + k_i k_j + k_j^2)\tau \right), \quad (23d)$$

and

$$G_{[1,2]} = \begin{cases} A_{246}/A_{146}, & \text{for } X > 0, Y \rightarrow \infty \\ A_{235}/A_{135}, & \text{for } X < 0, Y \rightarrow -\infty, \end{cases} \quad (23e)$$

$$G_{[5,6]} = \begin{cases} A_{136}/A_{135}, & \text{for } X < 0, Y \rightarrow \infty \\ A_{246}/A_{245}, & \text{for } X > 0, Y \rightarrow -\infty. \end{cases}$$

The solitary waves indicated by subscripts [5, 6], [3, 4] or [1, 2] are travelling in a northeast, east or southeast direction in the  $(x, y)$ -plane when viewed from above, as seen in Fig. 2. The equations in (23) provide information about the amplitude, speed and angle of each solitary wave (angle  $\theta$  is between wave and positive  $y$ -axis, see Fig. 2). In particular, the wave characterised by subscript  $[i, j]$  has amplitude  $\frac{1}{2}(k_j - k_i)^2$ , speed  $(k_i^2 + k_j k_i + k_j^2)$ , and angle with  $\tan \theta = -(k_i + k_j)$ , where the pair  $[i, j]$  takes values [1, 2], [3, 4] or [5, 6].

Without loss of generality, we take the middle [3, 4] soliton to be parallel to the  $Y$ -axis and travelling in the positive  $X$ -direction, and the other two-line solitons, [1, 2] and [5, 6], are assumed to have equal and opposite angles  $\pm\theta$  with the  $Y$ -axis as that should make the amplitude at the collision of the three solitons maximal. Finally, the outer two solitons are assumed to have equal amplitude, taken to be  $1/\lambda$  times the amplitude  $\tilde{A} = \frac{1}{2}(k_4 - k_3)^2$  of the [3, 4] soliton. We will ultimately take  $\lambda = 1$  to determine the maximum amplitude of three colliding solitons of equal amplitude  $\tilde{A}$ , but here we allow exploration around  $\lambda \approx 1$ .

Consequently, the following conditions hold for the parameters  $k_1, \dots, k_6$ ,

$$k_3 + k_4 = 0, \tag{24a}$$

$$k_1 + k_2 = -\tan \theta, \tag{24b}$$

$$k_5 + k_6 = \tan \theta, \tag{24c}$$

$$k_4 - k_3 = \sqrt{2\tilde{A}}, \tag{24d}$$

$$k_2 - k_1 = \sqrt{2\tilde{A}/\lambda}, \tag{24e}$$

$$k_6 - k_5 = \sqrt{2\tilde{A}/\lambda}, \tag{24f}$$

with angle  $\theta > 0$ . The equations in (24) can be solved to give the solutions

$$k_6 = -k_1 = \frac{1}{2} \tan \theta + \sqrt{\tilde{A}/2\lambda} = \sqrt{\tilde{A}} \left( \sqrt{2/\lambda} + \sqrt{1/2} + \delta \right), \tag{25a}$$

$$k_5 = -k_2 = \frac{1}{2} \tan \theta - \sqrt{\tilde{A}/2\lambda} = \sqrt{\tilde{A}} \left( \sqrt{1/2} + \delta \right), \tag{25b}$$

$$k_4 = -k_3 = \sqrt{\tilde{A}/2}. \tag{25c}$$

In Eqs. (25), we have introduced a new parameter  $\delta$  defined by

$$\delta = \frac{k_5 - k_4}{\sqrt{\tilde{A}}} = \frac{k_3 - k_2}{\sqrt{\tilde{A}}} = \frac{\tan \theta}{2\sqrt{\tilde{A}}} - \left( \sqrt{1/2\lambda} + \sqrt{1/2} \right) > 0, \tag{26a}$$

which allows us to eliminate  $\tan \theta$  from the expressions for  $k_i$ . Note that by using definition (26a), we can express the amplitude in terms of  $\theta$  and  $\delta$  as follows

$$\tilde{A} = \frac{1}{2}(k_4 - k_3)^2 = \frac{1}{2} \left( \frac{\tan \theta \sqrt{\lambda}}{\sqrt{\lambda} + 1 + \delta \sqrt{2\lambda}} \right)^2, \tag{26b}$$

noting that we do not yet know when and where the maximum will occur. The symmetry of the set-up immediately seems to make clear that the maximum will occur when the three intersection points coincide at a space-time point  $(X^*, Y^*, \tau^*)$  based on the far-field expressions.

### 3.4 Proof of Maximum Amplification

We begin by finding the location  $(X_*, Y_*, \tau_*)$  in space-time where the KPE solution  $u$  given in (9), with  $K$  given in (22), attains its maximum. The argument is entirely geometrical: we calculate the two intersection points of the centrelines of the [5, 6] and [3, 4] line solitons, as well as the the centrelines of the [1, 2] and [3, 4] line solitons. This yields two  $Y$ -positions,  $Y_{[1,2]}$  and  $Y_{[5,6]}$ , the mean of which is  $Y_*$ . The  $X$ -position  $X_*$  and time  $\tau_*$  when the maximum is attained then follow by satisfying  $Y_{[1,2]} = Y_{[5,6]} = Y_*$ .

The solution (22) is rewritten as follows

$$\begin{aligned} K(X, Y, \tau) &= A_{135} e^{\theta_1+\theta_3+\theta_5} + A_{235} e^{\theta_2+\theta_3+\theta_5} \\ &\quad + A_{136} e^{\theta_1+\theta_3+\theta_6} + A_{236} e^{\theta_2+\theta_3+\theta_6} \\ &\quad + A_{145} e^{\theta_1+\theta_4+\theta_5} + A_{245} e^{\theta_2+\theta_4+\theta_5} \\ &\quad + A_{146} e^{\theta_1+\theta_4+\theta_6} + A_{246} e^{\theta_2+\theta_4+\theta_6} \end{aligned} \quad (27a)$$

$$\begin{aligned} &= \underline{\underline{A_{135} e^{\theta_3+\theta_5} \left( e^{\theta_1} + \frac{A_{235}}{A_{135}} e^{\theta_2} \right)}} + A_{136} e^{\theta_3+\theta_6} \left( e^{\theta_1} + \frac{A_{236}}{A_{136}} e^{\theta_2} \right) \\ &\quad + \underline{A_{145} e^{\theta_4+\theta_5} \left( e^{\theta_1} + \frac{A_{245}}{A_{145}} e^{\theta_2} \right)} + \underline{A_{146} e^{\theta_4+\theta_6} \left( e^{\theta_1} + \frac{A_{246}}{A_{146}} e^{\theta_2} \right)} \end{aligned} \quad (27b)$$

$$\begin{aligned} &= A_{135} e^{\theta_1+\theta_5} \left( e^{\theta_3} + \frac{A_{145}}{A_{135}} e^{\theta_4} \right) + A_{235} e^{\theta_2+\theta_5} \left( e^{\theta_3} + \frac{A_{245}}{A_{235}} e^{\theta_4} \right) \\ &\quad + \underline{A_{136} e^{\theta_1+\theta_6} \left( e^{\theta_3} + \frac{A_{146}}{A_{136}} e^{\theta_4} \right)} + A_{236} e^{\theta_2+\theta_6} \left( e^{\theta_3} + \frac{A_{246}}{A_{236}} e^{\theta_4} \right) \end{aligned} \quad (27c)$$

$$\begin{aligned} &= \underline{\underline{A_{135} e^{\theta_1+\theta_3} \left( e^{\theta_5} + \frac{A_{136}}{A_{135}} e^{\theta_6} \right)}} + A_{235} e^{\theta_2+\theta_3} \left( e^{\theta_5} + \frac{A_{236}}{A_{235}} e^{\theta_6} \right) \\ &\quad + \underline{A_{145} e^{\theta_1+\theta_4} \left( e^{\theta_5} + \frac{A_{146}}{A_{145}} e^{\theta_6} \right)} + A_{245} e^{\theta_2+\theta_4} \left( e^{\theta_5} + \frac{A_{246}}{A_{245}} e^{\theta_6} \right). \end{aligned} \quad (27d)$$

We note that all expressions in (27) are equivalent, but each one of them will be used to obtain the dominant term in the limits  $Y \rightarrow \pm\infty$  and for different values of  $X$ . For  $X > 0, Y \rightarrow \infty$ , we find that  $e^{\theta_4} \gg e^{\theta_3}$  and  $e^{\theta_6} \gg e^{\theta_5}$  in (27b), making the term underlined therein dominant, thereby leading to the [1, 2] soliton (23a). However, for  $X < 0, Y \rightarrow -\infty$  we obtain the double-underlined term as the dominant one (in particular, substitute  $X + (k_1 + k_2)Y = 0$  to determine the dominant term), which is

the one we need for comparing the pair of intersection points of the (perturbed) [5, 6] and [1, 2] line solitons with the (perturbed) [3, 4] line soliton. For  $X \approx 0, Y \rightarrow \infty$ , we find that  $e^{\theta_6} \gg e^{\theta_5}$  and  $e^{\theta_1} \gg e^{\theta_2}$ , so the underlined term in (27c) dominates over the other terms and leads to the [3, 4] soliton (23c). For  $X < 0, Y \rightarrow \infty$ , we find that  $e^{\theta_1} \gg e^{\theta_2}$  and  $e^{\theta_3} \gg e^{\theta_4}$  in (27d), making the underlined term therein dominant, thereby leading to the [5, 6] soliton (23b).

Recall that we have set  $a = b = c = 1$ . Therefore in the far-field, we obtain,

$$K_{[1,2]} \approx A_{135} e^{\theta_3+\theta_5} \left( e^{\theta_1} + \frac{A_{235}}{A_{135}} e^{\theta_2} \right) = A_{135} e^{\theta_3+\theta_5} \left( e^{\theta_1} + G_{[1,2]} e^{\theta_2} \right), \quad (28a)$$

$$K_{[3,4]} \approx A_{136} e^{\theta_1+\theta_6} \left( e^{\theta_3} + \frac{A_{146}}{A_{136}} e^{\theta_4} \right) = A_{136} e^{\theta_1+\theta_6} \left( e^{\theta_3} + e^{\theta_4} \right), \quad (28b)$$

$$K_{[5,6]} \approx A_{135} e^{\theta_1+\theta_3} \left( e^{\theta_5} + \frac{A_{136}}{A_{135}} e^{\theta_6} \right) = A_{135} e^{\theta_1+\theta_3} \left( e^{\theta_5} + G_{[5,6]} e^{\theta_6} \right), \quad (28c)$$

with  $G_{[1,2]} = A_{235}/A_{135}, G_{[5,6]} = A_{136}/A_{135}$ . From (22) we find that

$$\begin{aligned} A_{135} &= A_{246} = k_4 k_6 (k_6 - k_4) + k_5 k_6 (k_6 + k_5) - k_5 k_4 (k_5 + k_4) \\ &= k_5^2 (k_6 - k_4) + k_6^2 (k_4 + k_5) - k_4^2 (k_6 + k_5) \\ &= -k_5^2 k_4 + k_6^2 (k_4 + k_5) - k_4^2 k_5 + k_6 (k_5^2 - k_4^2) \\ &\xrightarrow{\delta=0} k_6^2 (k_4 + k_5) - k_4 k_5 (k_4 + k_5) = 2k_5 (k_6^2 - k_5^2) \end{aligned} \quad (29a)$$

$$A_{245} = A_{235} = 2k_5 (k_5^2 - k_4^2) \xrightarrow{\delta=0} 0 \quad (29b)$$

$$A_{146} = A_{136} = 2k_6 (k_6^2 - k_4^2) \xrightarrow{\delta=0} 2k_6 (k_6^2 - k_5^2) \quad (29c)$$

$$\begin{aligned} A_{145} &= A_{236} = k_5^2 (k_6 + k_4) + k_6^2 (k_5 - k_4) - k_4^2 (k_6 + k_5) \\ &\xrightarrow{\delta=0} k_5^2 (k_6 + k_4) - k_4^2 (k_6 + k_5) = k_5^2 (k_6 + k_5) - k_5^2 (k_6 + k_5) = 0, \end{aligned} \quad (29d)$$

in which we have used  $k_1 = -k_6, k_2 = -k_5, k_3 = -k_4$  and  $k_4 = k_5$ , the latter of which is true when  $\delta = 0$  (see (25)). The limit  $\delta \rightarrow 0$  provides the optimal angle: it will be used later to establish the maximum amplification. We note that, in the above calculations, it is important to take either the branches for  $X < 0$  or those for  $X > 0$  in determining the average  $Y = Y_*$ , on which plane the maximum will have to occur. The corresponding three-line-soliton solutions for  $X < 0$  and  $Y \rightarrow \pm\infty$  thus become, using (28),

$$u_{[1,2]} = \frac{1}{2} (k_1 - k_2)^2 \operatorname{sech}^2 \frac{1}{2} (\theta_1 - \theta_2 - \ln G_{[1,2]}), \quad (30a)$$

$$u_{[5,6]} = \frac{1}{2} (k_5 - k_6)^2 \operatorname{sech}^2 \frac{1}{2} (\theta_5 - \theta_6 - \ln G_{[5,6]}), \quad (30b)$$

$$u_{[3,4]} = \frac{1}{2} (k_3 - k_4)^2 \operatorname{sech}^2 \frac{1}{2} (\theta_3 - \theta_4). \quad (30c)$$

The centrelines of these line solitons coincide with the arguments of the  $\text{sech}^2$  functions in (30) being zero, i.e. when

$$\begin{aligned} \theta_1 - \theta_2 - \ln G_{[1,2]} &= (k_1 - k_2)X + (k_1^2 - k_2^2)Y - (k_1^3 - k_2^3)\tau - \ln G_{[1,2]} \\ &= -(k_6 - k_5)X + (k_6^2 - k_5^2)Y + (k_6^3 - k_5^3)\tau - \ln G_{[1,2]} = 0, \end{aligned} \quad (31a)$$

$$\theta_5 - \theta_6 - \ln G_{[5,6]} = (k_5 - k_6)X + (k_5^2 - k_6^2)Y - (k_5^3 - k_6^3)\tau - \ln G_{[5,6]} = 0, \quad (31b)$$

$$\begin{aligned} \theta_3 - \theta_4 &= (k_3 - k_4)X + (k_3^2 - k_4^2)Y - (k_3^3 - k_4^3)\tau \\ &= (k_3 - k_4)X - (k_3^3 - k_4^3)\tau = 0, \end{aligned} \quad (31c)$$

while again using  $k_1 = -k_6$ ,  $k_2 = -k_5$ ,  $k_3 = -k_4$ . Hence, the centreline of the [3, 4] soliton resides at

$$X = (k_3^2 + k_3k_4 + k_4^2)\tau. \quad (32)$$

Substitution of this relation (32) into (31a)–(31b) yields

$$Y = Y_{[1,2]} = \tau \left( \frac{k_3^2 + k_3k_4 + k_4^2}{k_6 + k_5} - \frac{k_6^2 + k_5k_6 + k_6^2}{k_6 + k_5} \right) + \frac{\ln G_{[1,2]}}{(k_6^2 - k_5^2)}, \quad (33a)$$

$$Y = Y_{[5,6]} = -\tau \left( \frac{k_3^2 + k_3k_4 + k_4^2}{k_6 + k_5} - \frac{k_6^2 + k_5k_6 + k_6^2}{k_6 + k_5} \right) - \frac{\ln G_{[5,6]}}{(k_6^2 - k_5^2)}, \quad (33b)$$

respectively, the average of which yields

$$Y_* = \frac{1}{2}(Y_{[1,2]} + Y_{[5,6]}) = \frac{1}{2} \frac{\ln \left( k_5(k_5^2 - k_4^2) / [k_6(k_6^2 - k_4^2)] \right)}{(k_6^2 - k_5^2)}. \quad (34)$$

The  $Y$ -coordinates in relations (33) equal  $Y_*$  when  $\tau_* = 0$  for which  $X_* = 0$  from (32). Hence, the space-time point with the maximum amplitude is

$$(X_*, Y_*, \tau_*) = \left( 0, \frac{1}{2} \frac{\ln \left( k_5(k_5^2 - k_4^2) / [k_6(k_6^2 - k_4^2)] \right)}{(k_6^2 - k_5^2)}, 0 \right), \quad (35)$$

where we have assumed that this is where the three-soliton centrelines coalesce.

The next step is to assess the maximum possible amplification

$$u(X_*, Y_*, \tau_*) / \tilde{A}.$$

After defining  $\theta_{lmn} = (k_l^2 + k_m^2 + k_n^2)Y_*$ , with  $l, m, n = 1, 2, \dots, 6$  and  $l \neq m \neq n$ , we observe and determine the following relations



$$\theta_{235} - \theta_{135} = (k_5^2 - k_6^2)Y_*, \tag{36a}$$

$$\theta_{136} - \theta_{135} = (k_6^2 - k_5^2)Y_*, \tag{36b}$$

$$\theta_{236} - \theta_{135} = 0, \tag{36c}$$

$$\theta_{145} - \theta_{135} = 0, \tag{36d}$$

$$\theta_{245} - \theta_{135} = (k_5^2 - k_6^2)Y_*, \tag{36e}$$

$$\theta_{146} - \theta_{135} = (k_6^2 - k_5^2)Y_*, \tag{36f}$$

$$\theta_{246} - \theta_{135} = 0. \tag{36g}$$

Using these relations together with those in (29), the following relations emerge when taking the derivatives in  $\partial_{XX}K$

$$(k_1 + k_3 + k_5)^2 = (k_2 + k_4 + k_6)^2 = \frac{\tilde{A}}{2\lambda} \left( \sqrt{\lambda} + 2 \right)^2, \tag{37a}$$

$$\begin{aligned} (k_2 + k_3 + k_5)^2 &= (k_1 + k_3 + k_6)^2 = (k_2 + k_4 + k_5)^2 \\ &= (k_1 + k_4 + k_6)^2 = \frac{\tilde{A}}{2}, \end{aligned} \tag{37b}$$

$$(k_2 + k_3 + k_6)^2 = (k_1 + k_4 + k_5)^2 = \frac{\tilde{A}}{2\lambda} \left( \sqrt{\lambda} - 2 \right)^2, \tag{37c}$$

as well as the definition (coming from (34))

$$F = e^{(k_6^2 - k_5^2)Y_*} = \left( \frac{k_5(k_5^2 - k_4^2)}{k_6(k_6^2 - k_4^2)} \right)^{1/2} = \left( \frac{k_2(k_2^2 - k_3^2)}{k_1(k_1^2 - k_3^2)} \right)^{1/2}, \tag{38}$$

we find that

$$\begin{aligned} Ke^{-\theta_{135}} &= \underline{A_{135}} + \underline{A_{246}} + A_{236} + A_{145} + (\underline{A_{235}} + \underline{A_{245}})/F + (\underbrace{A_{136}} + \underbrace{A_{146}})F \\ &= 2(A_{246} + A_{236} + A_{245}/F + A_{146}F) \end{aligned} \tag{39a}$$

$$\begin{aligned} \partial_{XX}Ke^{-\theta_{135}} &= (k_1 + k_3 + k_5)^2 A_{135} + (k_2 + k_4 + k_6)^2 A_{246} \\ &\quad + (k_2 + k_3 + k_6)^2 A_{236} + (k_1 + k_4 + k_5)^2 A_{145} \\ &\quad + (k_2 + k_3 + k_5)^2 A_{235}/F + (k_2 + k_4 + k_5)^2 A_{245}/F \\ &\quad + (k_1 + k_3 + k_6)^2 A_{136}F + (k_1 + k_4 + k_6)^2 A_{146}F \end{aligned} \tag{39b}$$

$$\begin{aligned} &= \frac{1}{2}\tilde{A} \left( (A_{135} + A_{246}) \frac{(\sqrt{\lambda} + 2)^2}{\lambda} + (A_{235} + A_{245})/F \right. \\ &\quad \left. + (A_{136} + A_{146})F + (A_{236} + A_{145}) \frac{(\sqrt{\lambda} - 2)^2}{\lambda} \right) \\ &= \tilde{A} \left( A_{246} \frac{(\sqrt{\lambda} + 2)^2}{\lambda} + A_{245}/F + A_{146}F + A_{236} \frac{(\sqrt{\lambda} - 2)^2}{\lambda} \right), \end{aligned} \tag{39c}$$

where equal pairs have been indicated (the four pairs are in principle different prior to fixing the  $k_i$ 's, except for using the properties  $k_1 = -k_6$ ,  $k_2 = -k_5$ ,  $k_3 = -k_4$ ). Hence, the amplification at the peak relative to the largest soliton with amplitude  $\tilde{A}$  and with  $\lambda \geq 1$  becomes as follows

$$\begin{aligned} \frac{u(0, Y_*, 0)}{\tilde{A}} &= \frac{2\partial_{XX} \ln K}{\tilde{A}} = 2 \frac{(\partial_{XX} K)K - (\partial_X K)^2}{\tilde{A}K^2} = \frac{2\partial_{XX} K}{\tilde{A}K} \\ &= \frac{\left( A_{246} \frac{(\sqrt{\lambda}+2)^2}{\lambda} + A_{245}/F + A_{146}F + A_{236} \frac{(\sqrt{\lambda}-2)^2}{\lambda} \right)}{(A_{246} + A_{236} + A_{245}/F + A_{146}F)} \end{aligned} \quad (40a)$$

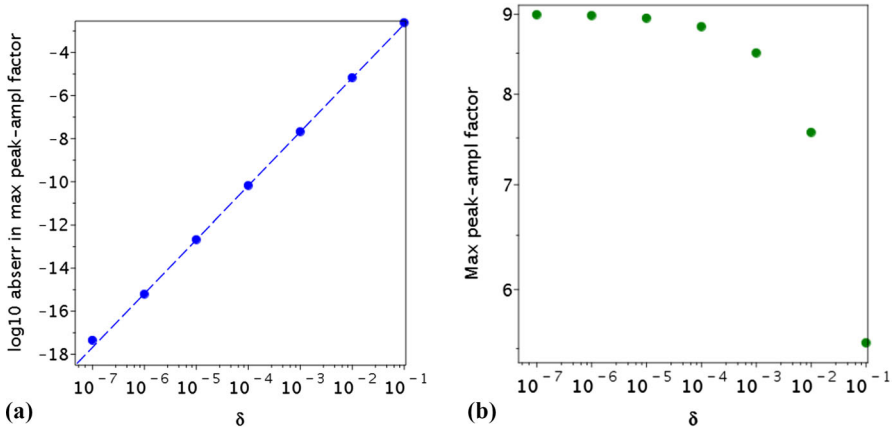
$$\begin{aligned} &= \frac{(\sqrt{\lambda}+2)^2}{\lambda} - \left( \frac{2^{11}}{\lambda^3} \right)^{1/4} ((\sqrt{\lambda}+1)(\sqrt{\lambda}+2))^{1/2} \sqrt{\delta} \\ &\quad + \left( \frac{2^5}{\lambda} \right)^{1/2} (\sqrt{\lambda}+3)\delta + \left( \frac{2^5}{\lambda^3} \right)^{1/4} \frac{(\lambda^{3/2} + 9\lambda + 11\sqrt{\lambda} - 2)}{((\sqrt{\lambda}+1)(\sqrt{\lambda}+2))^{1/2}} \delta^{3/2} \\ &\quad + \frac{4(3\lambda + 3\sqrt{\lambda} - 2)}{(\sqrt{\lambda}+1)\sqrt{\lambda}} \delta^2 + O(\delta^{5/2}) \end{aligned} \quad (40b)$$

$$\xrightarrow{\delta=0} 1 + \frac{4}{\lambda} + \frac{4}{\sqrt{\lambda}}, \quad (40c)$$

in which the definitions of  $k_1, \dots, k_6$  found in (25), with their dependence on  $\delta, \lambda, \tilde{A}$ , have been substituted as well as (29), the latter also in the limit  $\delta \rightarrow 0$ . Quantitative illustrations of the dependence upon  $\delta$  of both the absolute error in (40b) (computed relative to (40a)), and the maximum peak-amplification factor predicted by (40b) are shown in Fig. 3 for the specific value  $\lambda = 1$ .

Since both  $\lambda > 0$  and  $\delta > 0$ , the series form (40b) implies that the peak-amplification factor,  $\mu_p$  say, is maximised when  $\delta = 0$ , at which its value is given by (40c). This follows from the positive-definiteness of the coefficient of  $\sqrt{\delta}$  in (40), wherein neglected terms are of order  $O(\delta^{5/2})$ . Immediately obvious from (40b) is that  $\frac{\partial}{\partial \delta} \mu_p$  is of order  $O(\delta^{-1/2})$  as  $\delta \rightarrow 0$ , whereas  $\frac{\partial}{\partial \lambda} \mu_p$  is of order  $O(\delta^{1/2})$  as  $\delta \rightarrow 0$ . Thus the maximum value of  $\mu_p$  is respectively cusped and smooth with respect to variations in  $\delta$  and  $\lambda$ .

That the maximum peak-amplification factor (40c) as  $\delta \rightarrow 0$  is the unique global maximum (with respect to both  $\delta$  and  $\lambda$ ) can be proven explicitly using the algebraic manipulator `Maple`. Differentiating the exact expression (40a) with respect to  $\delta$  yields a rational fraction in which both numerator and denominator are cumbersome transcendental functions of  $\lambda, \delta > 0$ ; their presentation is facilitated using the pictorial form in Fig. 4, in which the negative sign initiating the numerator and positive-definiteness of all other terms confirms that  $\frac{\partial}{\partial \delta} \mu < 0$  for all  $\lambda, \delta > 0$ . The conclusion  $\frac{\partial}{\partial \lambda} \mu < 0$  for all  $\lambda, \delta > 0$  can be similarly reached; the details are omitted. Hence, since (40a) is positive-definite and partial derivatives with respect to both its independent variables are globally negative-definite in the domain of definition, the maximum value (40c) as  $\delta \rightarrow 0$  is unique.



**Fig. 3** (a) Log–log plot of the absolute error, as a function of  $\delta$ , between exact maximum peak-amplification factor (40a) and series approximation (40b) for the “base state”  $\lambda = 1$ . The dashed line indicates  $23 \delta^{5/2} / (2^{11/4} 3^{3/2})$ , confirming the error in (40b) with  $\lambda = 1$ , departure from which at the smallest value of  $\delta$  signifies entry of the calculations into the rounding plateau of the double-precision arithmetic used. (b) Semi-log plot of the maximum peak-amplification factor (40a) as a function of  $\delta$ , for  $\lambda = 1$ : the nine-fold amplification as  $\delta \rightarrow 0$  is evident

```

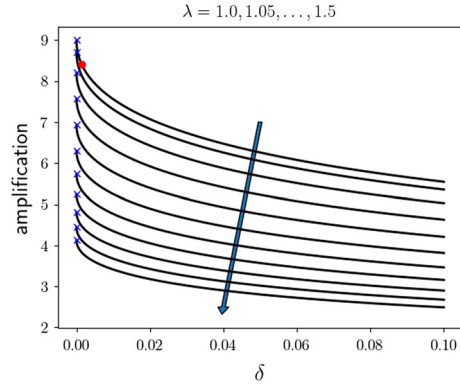
> dPn := simplap( numer( dP ) );
dPn := -64 72 sqrt(2 + 2 delta) ( ( 61 delta^5/2 + 35 delta^9/2 + delta^13/2 + 1/72 sqrt(delta) + 1/8 delta^3/2 sqrt(2) + 425 delta^7/2 sqrt(2) + 119 sqrt(2) delta^11/2 + 1/8 sqrt(2) delta^15/2 ) lambda^7/2
+ 5/16 ( 1/45 lambda^4 + 5/3 lambda^3 + 38 lambda^2 + lambda^2 + 133 lambda^5/2 + 2/15 lambda ) sqrt(2) delta^3/2 + ( 1/2 lambda^3/2 + 245 lambda^5/2 + 1/36 lambda + 1/12 lambda^4 + 31 lambda^3 + 37 lambda^2 ) delta^5/2
+ ( 21 delta^9/2 + 7/36 sqrt(delta) + 875 delta^7/2 sqrt(2) + 7/16 sqrt(2) delta^11/2 ) lambda^5/2 + 1/8 ( 61 lambda^4 + 105 lambda^3 + 55 lambda^2 + lambda^2 ) sqrt(2) delta^7/2 + 85 lambda^2 ( lambda^2 + 651 lambda
+ 66 ) delta^9/2 + 35 lambda^3 ( lambda + 33/10 ) sqrt(2) delta^11/2 + 1/8 sqrt(delta) lambda^3/2 + 17/36 lambda ( lambda^2 + 33/34 ) delta^13/2 + 9/34 sqrt(2) delta^15/2 lambda^3 + 1/17 delta^17/2 lambda^3 + 3/17 sqrt(delta) ( lambda^2 + 8/3 lambda
+ 1/3 ) sqrt(2 + delta) sqrt( (2 + 2 delta) sqrt(lambda) + 2 sqrt(2) ) sqrt( (2 sqrt(2) delta + 2) sqrt(lambda) + delta^2 lambda + sqrt(2) delta lambda + 2 ) + ( (224 delta^2 + 1 + 3312 delta^6 + 4533 delta^4 + 6 delta^10
+ 1355 delta^8 ) sqrt(2) + delta ( 38 + 2635 delta^2 + 315 delta^6 + delta^10 + 5589 delta^6 + 9731 delta^4 ) ) lambda^15/4 + ( (3618 delta^6 + 8865 delta^4 + 750 delta^2 + 6 delta^10 + 695 delta^8
+ 8 ) sqrt(2) + 66 delta^9 + 4275 delta^7 + 7224 delta^5 + 6705 delta^3 + 177 delta ) lambda^13/4 + ( (240 delta^6 + 1206 delta^4 + 860 delta^2 + 41 ) sqrt(2) + 60 delta^7 + 962 delta^5 + 1880 delta^3
+ 417 delta ) lambda^7/4 + ( (150 delta^8 + 2220 delta^6 + 4806 delta^4 + 1355 delta^2 + 26 ) sqrt(2) + 417 delta + 9415 delta^3 + 1005 delta^7 + 30 delta^9 + 5942 delta^5 ) lambda^11/4 + 24 ( ( delta^9 + 105 delta^7
+ 121 delta^5 + 377 delta^3 + 5/4 delta ) sqrt(2) + 11 delta^8 + 285 delta^6 + 133 delta^4 + 165 delta^2 + 1/8 ) delta lambda^17/4 + 4 delta^2 ( ( 6 delta^8 + 95 delta^6 + 57 delta^4 + 99 delta^2 + 1/4 ) sqrt(2) + delta^9
+ 63/2 delta^7 + 363/4 delta^5 + 377/8 delta^3 + 15/4 delta ) lambda^19/4 + ( (24 delta^6 + 270 delta^4 + 284 delta^2 + 20 ) sqrt(2) + 168 delta^5 + 510 delta^3 + 168 delta ) lambda^5/4 + ( (40 delta^8 + 906 delta^6
+ 3084 delta^4 + 1416 delta^2 + 44 ) sqrt(2) + 360 delta^7 + 2982 delta^5 + 3870 delta^3 + 552 delta ) lambda^9/4 + 8 lambda^3/4 ( ( 3 delta^4 + 5 delta^2 + 1/2 ) sqrt(2) + delta + 15/2 delta^3 + 7/2 delta ) sqrt(delta)

> dPd := simplap( denom( dP ) );
dPd := sqrt( (2 + 2 delta) sqrt(lambda) + 2 sqrt(2) ) sqrt( (2 + 2 delta) sqrt(lambda) + 2 sqrt(2) ) sqrt( (2 sqrt(2) delta + 2) sqrt(lambda) + delta^2 lambda + sqrt(2) delta lambda + 2 ) ( sqrt(2) + 2 delta ) sqrt( (2 + 2 delta) sqrt(lambda) + 2 sqrt(2) ) ( ( 3 delta^5/2 sqrt(2)
+ 2 delta^3/2 + 2 delta^7/2 ) lambda^7/4 + ( sqrt(delta) sqrt(2) + 3 delta^5/2 sqrt(2) + 6 delta^3/2 ) lambda^5/4 + lambda^3/4 ( 2 delta^3/2 + sqrt(delta) sqrt(2) ) ) sqrt(2) + delta sqrt( (2 + 2 delta) sqrt(lambda) + delta^2 lambda + sqrt(2) delta lambda + 2
+ 4 delta ( delta ( ( 3 delta^3 + 3 delta ) sqrt(2) + delta^4 + 13/2 delta^2 + 1 ) lambda^5/2 + ( 6 delta^3 + 12 delta^2 sqrt(2) + 15 delta + 3 sqrt(2) ) lambda^3/2 + 3 lambda ( ( 4 delta + ( 13/3 lambda + 2/3 ) delta^2 + 1/3 lambda
+ 2/3 ) sqrt(2) + 5 delta^3 lambda + ( 3 lambda + 2 ) delta ) )^2 sqrt(2) + delta

```

**Fig. 4** Maple-generated explicit forms of the numerator  $dPn$  and denominator  $dPd$  of the derivative with respect to  $\delta$  of (40a). Clearly the numerator and denominator are respectively negative- and positive-definite for all  $\lambda, \delta > 0$ . An analogous inference follows when the derivative with respect to  $\lambda$  is considered, though the corresponding formulae are not presented

**Fig. 5** Maximum amplification  $u(0, Y_*, 0)/\bar{A}$  as a function of  $\delta$  for  $\lambda = 1, 1.05, \dots, 1.5$ , increasing in the direction of the arrow. The maximum at  $\delta = 0$  is a cusp, indicated by the blue crosses. Indicated by a circle is  $\delta = 0.00140445$  with amplification 8.41 for  $\lambda = 1$ , used later in simulation SP3



Note that  $Y_*$  in (34) diverges when  $k_4 \rightarrow k_5$  in the limit  $k_5 - k_4 = \delta\sqrt{\bar{A}} \rightarrow 0$ , as follows

$$Y_* = \frac{1}{2} \frac{\ln \left( \delta\sqrt{\bar{A}} k_5(k_5 + k_4) / [k_6(k_6^2 - k_4^2)] \right)}{(k_6^2 - k_5^2)} \xrightarrow{\delta \rightarrow 0} -\infty, \tag{41}$$

and also that the term  $A_{146}F \rightarrow 0$  when  $\delta \rightarrow 0$ . Moreover, in the above calculation we have used that  $A_{245} \rightarrow 0$  and  $A_{236} \rightarrow 0$  when  $\delta \rightarrow 0$ , as shown in (29). However, it may be useful to adjust the  $\mathcal{A}$ -matrix in (20) by using  $a, b, c \neq 1$  such that  $Y_*$  resides by construction at  $Y = 0$ , if possible. We have therefore established that the maximum amplification occurs for  $\delta = 0$ , shown both asymptotically from the Taylor expansion in (40) and graphically, see Fig. 5.

The reason that the above result comprises a valid rather than heuristic proof, despite the fact that it is based on the far-field expressions, is as follows. Prior to reaching the maximum at  $(X_*, Y_*, \tau_*)$ , there is a phase shift between the branches of [1, 2], [5, 6] for  $Y < Y_*$  and  $Y > Y_*$ , seemingly meaning that the far-field expressions cannot be used to find the interaction point geometrically. However, the phase shift swaps directions when it passes through the time at which the maximum occurs. That is, the symmetry of the set-up implies that the phase shift becomes zero at the maximum point  $(X_*, Y_*, \tau_*)$  in space-time. Given that we have calculated and therefore know  $(X_*, Y_*, \tau_*)$ , an *a posteriori* proof that it is indeed the maximum is provided in Appendix B.

## 4 Numerical Verification of Maximum Amplification for the BLE

### 4.1 Use of Geometric/Conservative Finite-Element Method

The BLE are a Hamiltonian pair of wave equations that conserve mass, energy and phase-space volume. Since we are interested in assessing numerically the maximum wave amplification of interacting solitons, it is important to choose a numerical method that preserves wave amplitude and, preferably, the entire geometric or Hamiltonian structure of the underlying partial differential equations. Without such conservation

**Table 1** Overview of the simulations undertaken with the KPE parameter values employed

Simulation	Solitons	$\tan \theta$	$\tilde{A}$	$\lambda$
SP2	2	$\left(\frac{2}{9}\right)^{1/6} \frac{1}{4\sqrt{\epsilon}} \approx 8.7013 \times 10^{-1}$	$\frac{\tan^2 \theta}{2} \approx 3.7856 \times 10^{-1}$	–
SP3	3	$\left(\frac{2}{9}\right)^{1/6} \frac{1}{4\sqrt{\epsilon}} \approx 8.7013 \times 10^{-1}$	$9.4454 \times 10^{-2}$	1

In all simulations, we take  $\epsilon = 0.05$ ,  $\mu = \epsilon^2$ . The expression taken for  $\tan \theta = \left(\frac{2}{9}\right)^{1/6} \frac{1}{4\sqrt{\epsilon}}$  is such that to make the tangent of the angle between  $\eta_{0[1,2]}$  and the  $y$ -axis for BLE equal to  $1/4$ . SP2/SP3 concern simulations in a domain periodic in the  $x$ -direction

**Table 2** Values of parameters  $k_i$ , obtained from (25) with the parameters in Table 1

Simulation	$k_1$	$k_2$	$k_3$	$\delta$
SP2	$-\tan \theta$	0	0	0
SP3	$-0.65238$	$-0.21775$	$-0.21732$	$\frac{k_3 - k_2}{\sqrt{A}} \approx 0.00140445$

properties, the maximum amplification obtained numerically could be too low due to artificial dissipation; additionally, (computationally expensive) high resolution may be required to minimise such dissipation. We therefore solve the BLE by employing a continuous Galerkin (CG) finite-element method (FEM) based on a geometric or variational space-time discretisation. In particular, we employ a second-order Störmer-Verlet scheme in time, and Lagrange interpolation polynomials of order one, two, three and four to discretise space, denoted by CG1/CG2/CG3/CG4 in the rest of this section. The reader is directed to references [7, 8, 11] for details on this geometric-discretisation approach. In addition, the method is implemented and available in Firedrake [29], which is “an automated system for the solution of partial differential equations using the finite element method”.

### 4.2 Numerical Strategies

Two solutions of the KPE will be used as initial conditions for simulations of the BLE, in order to test whether the calculated maximum amplification is reached and/or maintained. We therefore run two sets of simulations, each using the parameter values shown in Tables 1 and 2, and described as follows:

- simulations SP2 use initial conditions formed by the two-line soliton solution (9), with  $K(X, Y, \tau)$  given in (14) and  $k_1 < k_2 = 0 = k_3 < k_4$ ; and,
- simulations SP3 use initial conditions formed by the three-line soliton solution (9), with  $K(X, Y, \tau)$  given in (22) and the  $k_i$ 's given in (25).

However, these KPE solutions hold on an infinite horizontal plane, and the region of interaction, where the far-field line solitons cross, propagates in the  $x$ -direction. Consequently, a numerical simulation ideally needs to occur within a domain that is sufficiently large to admit influence or decay, to nearly zero, of the effect of the inter-

actions near the domain boundaries. The remaining issue is then how to deal with the moving single-line solitons at these domain edges. To achieve energy conservation, such far-field single-line solitons should be normal to the domain walls: clearly, this would necessitate awkwardly shaped domains, which concomitantly places challenging computational demands on the numerical methodology deployed. Accordingly, the following strategy has been devised for the simulations.

The solutions can be set to become approximately periodic when the domain is sufficiently large. Consider Fig. 2 as one cell in a domain either periodic in  $X$ - or periodic in both the  $X$ - and  $Y$ -directions, in which we have placed the  $X$ -shaped [1, 2], [5, 6] line solitons exactly at the corners of a periodic domain. Such domains can be patched together to form crossing seas. Hence, a domain periodic in only the  $X$ -direction or in both  $X$ - and  $Y$ -directions is chosen. This approach has the additional advantage that energy will be approximately conserved, with any energy oscillations remaining bounded and decaying to zero as  $O(\Delta t^2)$  when the time step  $\Delta t \rightarrow 0$ , given the second-order geometric time integrators and geometric spatial FEM used. However, while the reconstructed  $\eta$  is periodic, the velocity potential  $\Phi$  is not and requires to be split into  $\Phi = (U_0 x + c_0) + \tilde{\Phi}$  for a suitable choice of  $U_0$  and  $c_0$ . The rewritten BLE for the periodic  $\eta$ ,  $\tilde{\Phi}$  are given below in Sect. 4.3.

Furthermore, in the numerical simulations, we halve the  $X$ - and  $Y$ -directional periodic domain with respect to  $Y = Y_*$ . After that, whilst retaining  $X$ -directional periodicity, we impose Neumann boundary conditions on the top and the bottom  $Y = Y_*$  of the half domain using the symmetry of  $K$ . These Neumann boundary conditions are approximate – with  $\partial_y \Phi_0 = 0$ ,  $\partial_y \eta_0 = 0$  – and required for the proof, because  $\partial_y \Phi_0$  and  $\partial_y \eta_0$  are not exactly zero on the top boundary whereon there will be “kinks” due to the periodicity procedure imposed. Note that  $K$  is symmetric about  $Y = Y_*$ , that is,  $K(X, Y_* - Y, \tau) = K(X, Y_* + Y, \tau)$ , for all  $(X, Y, \tau) \in \mathbb{R}^3$ . On the other hand, if  $K$  is  $Y$ -directional periodic with  $2p$ -periodicity ( $p > 0$ ), then  $K(X, Y_* + p - Y, \tau) = K(X, Y_* - (p - Y), \tau) = K(X, Y_* - (p - Y) + 2p, \tau) = K(X, Y_* + p + Y, \tau)$ , i.e.  $K$  is symmetric with respect to  $Y_* + p$  or  $Y_* - p$ . Thus, the symmetry allows  $\partial_y K = 0$  on  $Y = Y_* + pk$  for an integer  $k$ . Therefore, we can halve the  $X$ -,  $Y$ -directional periodic domain about  $Y = Y_*$ , or  $Y = Y_* + p$  while imposing Neumann boundary condition on  $Y = Y_*$  and  $Y = Y_* + p$ . To assess the approximations made, we will shortly compare two simulations, one of which uses the full periodic domain and the other the half-periodic domain.

The resolution for each simulation is provided in Table 3. Meshes are regular and, given  $\Delta x$ ,  $\Delta y$ , the time step is determined by trial and error such that the energy oscillations are stable, which we will confirm per simulation when discussing numerical results. By using a posteriori the linear dispersion relationship of the BLE and the stability criterion for the Störmer–Verlet time-stepping scheme, as well as our choice of  $\Delta x$ ,  $\Delta y$ , we verified that our chosen time step was (linearly) stable.

### 4.3 Initial Conditions and Set-Up in (Half) Periodic Domain

As described in the previous section, the solutions can be made approximately periodic when the domain is sufficiently large. Assuming a doubly periodic domain with

**Table 3** Values of several numerical parameters for each simulation set

Simulation	$L_x$	$L_y$	$T$	$N_x$	$N_y$	$\Delta x = \frac{L_x}{N_x}$	$\Delta y = \frac{L_y}{N_y}$	$\Delta t$
SP2–CG1/2/3	10.2772	40	50	132	480	0.0779	0.0833	0.005
SP3–CG1								
SP3–CG2	20.8934	47	200	252	564	0.0829	0.0833	0.005
SP3–CG3								
SP3–CG4	20.8934	47	200	126	282	0.1658	0.1666	0.005

Here,  $T$  is the total simulation time defined as  $T = t_{\text{end}} - t_0$  with  $t_0 = 0, -200$  for SP2 and SP3, respectively. For SP2,  $L_x = x_2 - x_1 \approx 10.2772$  (see (46)), so  $\Delta x \approx \Delta y$  given that the fields are quite isotropic in space. For SP3,  $L_x = x_2 - x_1 \approx 20.8934$  (see (48)), so again  $\Delta x \approx \Delta y$ . The time step used was chosen by trial and error to give convergence for the higher-order polynomials used in CG2/CG3. The CG4 simulations use a quarter of the elements and have a slightly higher number of degrees-of-freedom than CG2

$\{(x, y) \in [x_1, x_2] \times [y_1, y_2]\}$ , we set up a half-periodic domain by truncating the width of the domain in half, i.e. we take  $\Omega_h = \{(x, y) \in [x_1, x_2] \times [y_*, y_2]\}$  where  $y_* = (y_1 + y_2)/2$  is either the branch point (simulation SP2) or the location of the maximum (simulation SP3). The value of  $y_*$  is found by the exact solution of KPE for a specific choice of parameters  $k_i$ .

The BLE (1) are rewritten for (half-)periodic  $\eta$  and  $\tilde{\Phi}$ , where  $\tilde{\Phi}$  is defined through  $\Phi = (U_0x + c_0) + \tilde{\Phi}$ , as follows

$$\partial_t \tilde{\Phi} - \frac{\mu}{2} \partial_t \nabla^2 \tilde{\Phi} + \frac{\epsilon}{2} U_0^2 + U_0 \partial_x \tilde{\Phi} + \frac{\epsilon}{2} |\nabla \tilde{\Phi}|^2 + \eta = 0, \tag{42a}$$

$$\partial_t \eta - \frac{\mu}{2} \partial_t \nabla^2 \eta + \epsilon U_0 \partial_x \eta + \nabla \cdot ((1 + \epsilon \eta) \nabla \tilde{\Phi}) - \frac{2\mu}{3} \nabla^4 \tilde{\Phi} = 0, \tag{42b}$$

and are both satisfied on  $\Omega_h = \{(x, y) \in [x_1, x_2] \times [y_*, y_2]\}$  for appropriately chosen  $x_1, x_2, y_2$ . The domain size is hence  $|\Omega_h| = L_x \times L_y = (x_2 - x_1) \times (y_2 - y_*)$ . The initial conditions imposed are

$$\eta_0(x, y) = \eta(x, y, t_0) = 2 \left(\frac{4}{3}\right)^{1/3} \partial_{XX} \ln(K(X, Y, \tau)), \tag{43a}$$

$$\Phi_0(x, y) = \Phi(x, y, t_0) = 2\sqrt{\epsilon} \left(\frac{4\sqrt{2}}{9}\right)^{1/3} \partial_X \ln(K(X, Y, \tau)), \tag{43b}$$

in which we use transformations (8) with  $t = t_0$ . For the given initial conditions,  $U_0$  can be calculated using the periodicity of  $\tilde{\Phi}$ , and  $c_0$  is found by setting  $\tilde{\Phi}(x_1, y) = \tilde{\Phi}(x_2, y) = 0$ , as given below

$$U_0 = U_0(y) = \frac{\Phi_0(x_2, y) - \Phi_0(x_1, y)}{x_2 - x_1}, \quad \text{for } y \in [y_1, y_2], \tag{44a}$$

$$c_0 = c_0(y) = -U_0(y)x_1 + \Phi_0(x_1, y), \tag{44b}$$

in which  $c_0(y)$  is defined to make  $U_0x_1 + c_0 = \Phi_0(x_1, y)$ . Hence, when defining the line  $F(x) = U_0x + c_0$  connecting  $(x_1, \Phi_0(x_1, y))$  to  $(x_2, \Phi_0(x_2, y))$ , we observe that  $F(x) = U_0(x - x_1) + \Phi_0(x_1, y)$  such that  $c_0 = F(0)$ .

### 4.3.1 Simulation SP2 with Two-Soliton Interaction

The initial condition for the case with two interacting solitons in an  $x$ -periodic domain is set up as follows. Given the KPE solution  $u(X, Y, \tau)$  and  $K(X, Y, \tau)$  in (14) for the two interacting web solitons, we use (43) to find the initial condition for the BLE at  $\tau = 0$  and corresponding  $t = 0$ . Furthermore, the four values  $k_1, k_2 = k_3 = 0, k_4 = -k_1$  used are defined in Table 2. We introduce the initial condition using the expressions of the far-field solitons

$$\eta_{0[1,2]}(x, y) \approx \left(\frac{4}{3}\right)^{1/3} \frac{1}{2} (k_2 - k_1)^2 \operatorname{sech}^2 \frac{1}{2} a_{[1,2]}, \quad \text{for } x > 0, y \rightarrow \infty, \quad (45a)$$

$$\eta_{0[3,4]}(x, y) \approx \left(\frac{4}{3}\right)^{1/3} \frac{1}{2} (k_4 - k_3)^2 \operatorname{sech}^2 \frac{1}{2} a_{[3,4]}, \quad \text{for } x < 0, y \rightarrow \infty, \quad (45b)$$

with arguments  $a_{[i,j]} = a_{[i,j]}(x, y)$  defined by

$$a_{[1,2]}(x, y) = k_1 \sqrt{\frac{\epsilon}{\mu}} \left(\frac{3}{\sqrt{2}}\right)^{1/3} \left[ x + k_1 \left(\frac{3}{\sqrt{2}}\right)^{1/3} \sqrt{\epsilon} y \right] + \ln 2, \quad (45c)$$

$$a_{[3,4]}(x, y) = k_4 \sqrt{\frac{\epsilon}{\mu}} \left(\frac{3}{\sqrt{2}}\right)^{1/3} \left[ x + k_4 \left(\frac{3}{\sqrt{2}}\right)^{1/3} \sqrt{\epsilon} y \right] + \ln 2, \quad (45d)$$

from the arguments in (19). We choose the ends of the domains  $x_1, x_2, y_2$  such that to make the [1, 2] line soliton (45a) exactly pass through the corner  $(x_2, y_2)$ , and the [3, 4] line soliton (45b) pass through the corner  $(x_1, y_2)$ .

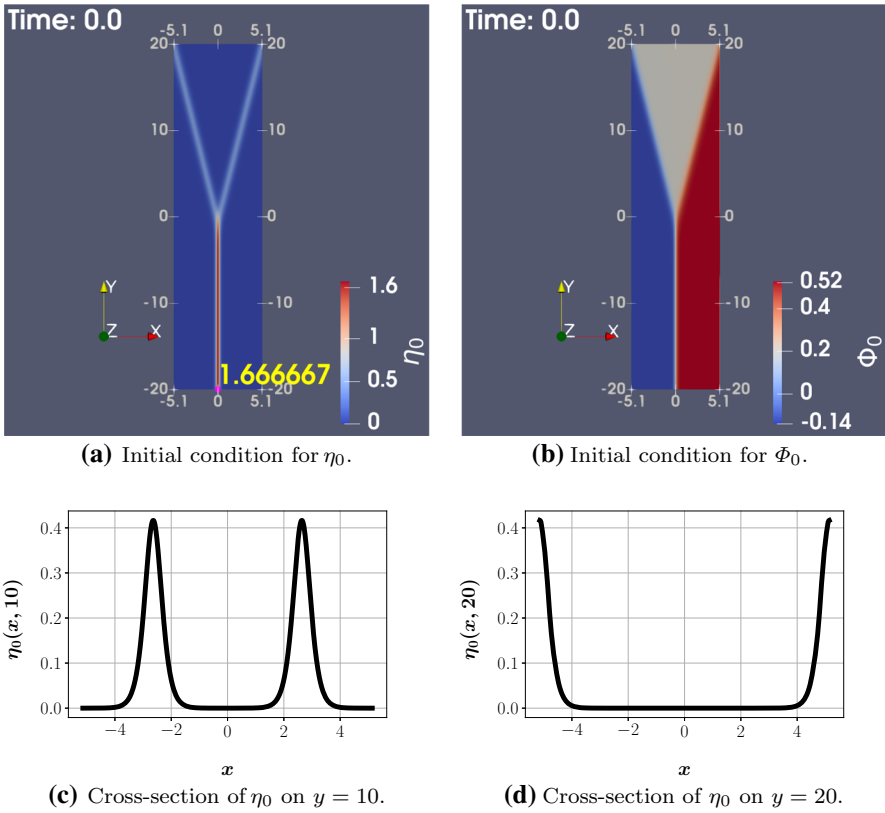
Firstly, we choose  $y_2$  to be sufficiently larger than  $y_*$ , here,  $y_2 = y_* + 40 = -20 + 40 = 20$ . We note that when a full periodic domain is used, the lower end of the domain is at  $y_1 = y_* - 40$ . We can subsequently find  $x_2$  such that  $\eta_{0[1,2]}(x_2, y_2) = \max(\eta_{0[1,2]})$ , that is where the argument of the  $\operatorname{sech}^2$ -function (45c) is zero,  $a_{[1,2]}(x_2, y_2) = 0$ . Following a similar argument, we can obtain  $x_1$  by setting  $a_{[3,4]}(x_1, y_2) = 0$  using (45d). Consequently we find

$$x_2 = -k_1 \left(\frac{3}{\sqrt{2}}\right)^{1/3} \sqrt{\epsilon} y_2 - \sqrt{\frac{\mu}{\epsilon}} \left(\frac{\sqrt{2}}{3}\right)^{1/3} k_1^{-1} \ln 2 \approx 5.1386, \quad (46a)$$

$$x_1 = -k_4 \left(\frac{3}{\sqrt{2}}\right)^{1/3} \sqrt{\epsilon} y_2 - \sqrt{\frac{\mu}{\epsilon}} \left(\frac{\sqrt{2}}{3}\right)^{1/3} k_4^{-1} \ln 2 \approx -5.1386. \quad (46b)$$

These initial conditions for SP2 are shown in Fig. 6.





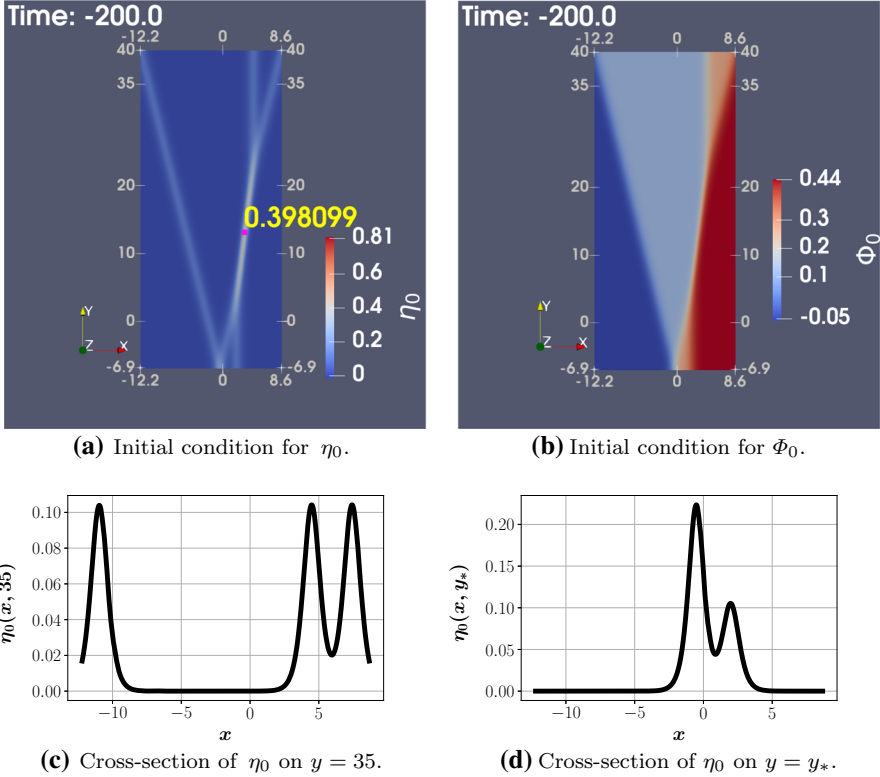
**Fig. 6** Initial conditions for **(a)**  $\eta_0$ , and **(b)**  $\Phi_0$ , at initial time  $t_0 = 0$  in the case of SP2. **(c, d)** show cross-sections of  $\eta_0$  on  $y = 10$ , and on the upper boundary  $y = y_2 = 20$ , respectively. The initial data  $(\eta_0, \Phi_0)$  are defined such that the height of each solitary wave is 0.4167, as seen in **(c)**, and the angles between each line soliton and the positive  $y$ -axis are  $\tan \theta_{[1,2]} = 1/4 = -\tan \theta_{[3,4]}$ , so that both line solitons exactly pass through the respective corners of the domain

### 4.3.2 Simulation SP3 with Three-Soliton Interaction

The initial condition for the case with three interacting web-solitons in an  $x$ -periodic domain is set up as follows. Given the KPE solution  $u(X, Y, \tau)$  and  $K(X, Y, \tau)$  in (27) for the three interacting web-solitons, we define the initial condition for the BLE at  $t = t_0 = -200$  (the corresponding value of  $\tau$  is found from (8a)). Note that we start the simulation at a negative time  $t_0 < 0$  to allow the solution to reach its maximum at  $t = 0$ , according to the results of Sect. 3.4. Furthermore, the six values  $k_1, k_2, k_3, k_4 = -k_3, k_5 = -k_2, k_6 = -k_1$  used in the simulations are defined in Table 2.

We calculate the end-points of the domain in a similar manner as done for SP2, that is, by using the expressions of the far-field solitons at the initial time,

$$\eta_{0[1,2]}(x, y) \approx \left(\frac{4}{3}\right)^{1/3} \frac{1}{2} (k_2 - k_1)^2 \operatorname{sech}^2 \frac{1}{2} a_{[1,2]}, \quad \text{for } x > 0, y \rightarrow \infty, \quad (47a)$$



**Fig. 7** Initial conditions for **(a)**  $\eta_0$ , and **(b)**  $\Phi_0$ , at initial time  $t_0 = -200$  in the case of SP3. **(c, d)** show cross-sections of  $\eta_0$  at the far-field  $y = 35$ , and on the upper boundary  $y = y_* = -6.9716$ , respectively. The initial data  $(\eta_0, \Phi_0)$  are defined such that the height of each solitary wave is 0.1040, as seen in **(c)**, and the angles between each line soliton and the positive  $y$ -axis are  $\tan \theta_{[1,2]} = 1/4 = -\tan \theta_{[5,6]}$

$$\eta_{0[5,6]}(x, y) \approx \left(\frac{4}{3}\right)^{1/3} \frac{1}{2} (k_6 - k_5)^2 \operatorname{sech}^2 \frac{1}{2} a_{[5,6]}, \quad \text{for } x < 0, y \rightarrow \infty, \quad (47b)$$

with arguments  $a_{[i,j]} = a_{[i,j]}(x, y)$  defined by

$$a_{[i,j]}(x, y) = (k_i - k_j) \sqrt{\frac{\epsilon}{\mu}} \left(\frac{3}{\sqrt{2}}\right)^{1/3} \left[ x + c + (k_i + k_j) \left(\frac{3}{\sqrt{2}}\right)^{1/3} \sqrt{\epsilon} y - \left(1 + (k_i^2 + k_i k_j + k_j^2) \left(\frac{4}{3}\right)^{1/3} \epsilon\right) (-200) \right] - \ln G_{[i,j]}, \quad (47c)$$

where functions  $G_{[i,j]}$  are defined in (23e), and  $c = -5 + t_0$  is given as a shifting constant in  $x$  for convenience (the value of this constant is chosen such that to have initial conditions ‘centered’ around  $x = 0$ ). Our goal is to make the [1, 2] line soliton (47a) exactly pass through the corner  $(x_2, y_2)$ , and the [5, 6] line soliton (47b) pass through corner  $(x_1, y_2)$ —see also Fig. 2.

**Table 4** Height of a line soliton,  $\tilde{A}(t) := \max_x(\eta(\cdot, y, t))$ , maximum amplitude of  $\eta$ , and their ratio, both for the re-scaled KPE solution,  $\eta_{KP}$ , and the BLE solution,  $\eta$

Case	Equation	$\tilde{A}$	max	$\max / \tilde{A}$
	$\eta_{KP}$	0.415	1.66	4.0
SP2–CG1	$\eta$	0.414–0.488	1.67–1.91	3.77–4.49
SP2–CG2	$\eta$	0.399–0.435	1.56–1.69	3.64–4.01
SP2–CG3	$\eta$	0.399–0.435	1.56–1.70	3.64–4.01
	$\eta_{KP}$	0.104	0.396–0.875	8.41
SP3–CG1	$\eta$	0.104–0.126	0.398–0.990	3.69–8.49
SP3–CG2	$\eta$	0.103–0.111	0.390–0.818	3.60–7.83
SP3–CG3	$\eta$	0.103–0.111	0.390–0.817	3.60–7.82

Results are shown for simulations SP2 and SP3, using CG1/2/3 in each case. See also Figs. 9 and 12, for the respective simulation results. The corresponding parameter values are found in Table 2

We begin by again choosing a sufficiently large  $y_2$ , compared to  $y_*$ , here taken to be  $y_2 = y_* + 47 = -6.9716 + 47 = 40.0284$ . The value of  $y_*$  is found by scaling  $Y_*$  found in (34) using (8a). Then we find  $x_2$  such that  $\eta_{0[1,2]}(x_2, y_2) = \max(\eta_{0[1,2]})$ , that is where the argument of the  $\text{sech}^2$ -function is zero,  $a_{[1,2]}(x_2, y_2) = 0$ . Following a similar argument, we can obtain  $x_1$  by setting  $a_{[5,6]}(x_1, y_2) = 0$ . We therefore find

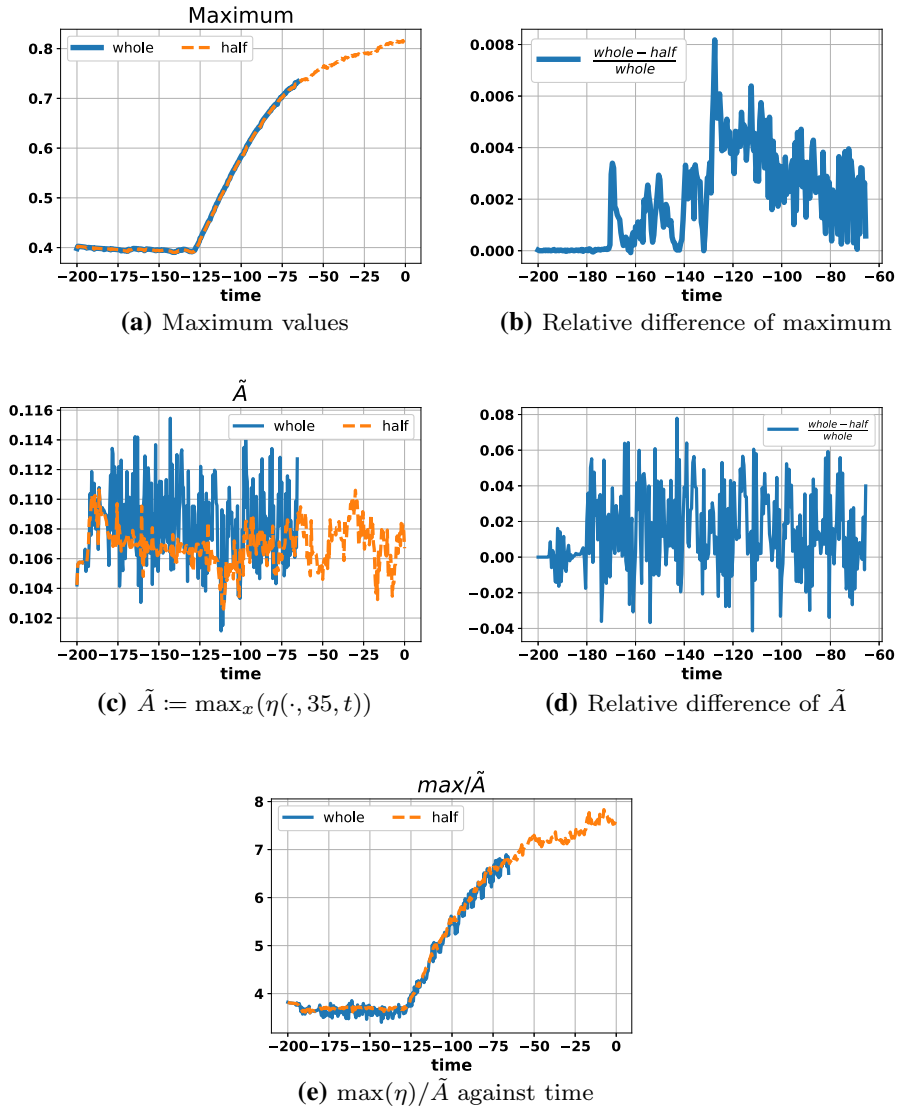
$$\begin{aligned}
 x_2 = 5 - (k_1 + k_2) \left(\frac{3}{\sqrt{2}}\right)^{1/3} \sqrt{\epsilon} y_2 + \left((k_1^2 + k_1 k_2 + k_2^2) \left(\frac{4}{3}\right)^{1/3} \epsilon\right) (-200) \\
 - \sqrt{\frac{\mu}{\epsilon}} \left(\frac{\sqrt{2}}{3}\right)^{1/3} \frac{1}{k_2 - k_1} \ln \frac{A_{246}}{A_{146}} \approx 8.6769,
 \end{aligned}
 \tag{48a}$$

$$\begin{aligned}
 x_1 = 5 - (k_5 + k_6) \left(\frac{3}{\sqrt{2}}\right)^{1/3} \sqrt{\epsilon} y_2 + \left((k_5^2 + k_5 k_6 + k_6^2) \left(\frac{4}{3}\right)^{1/3} \epsilon\right) (-200) \\
 - \sqrt{\frac{\mu}{\epsilon}} \left(\frac{\sqrt{2}}{3}\right)^{1/3} \frac{1}{k_6 - k_5} \ln \frac{A_{136}}{A_{135}} \approx -12.2165.
 \end{aligned}
 \tag{48b}$$

These initial conditions for SP3 are shown in Fig. 7.

### 4.4 Discussion of Numerical Simulations

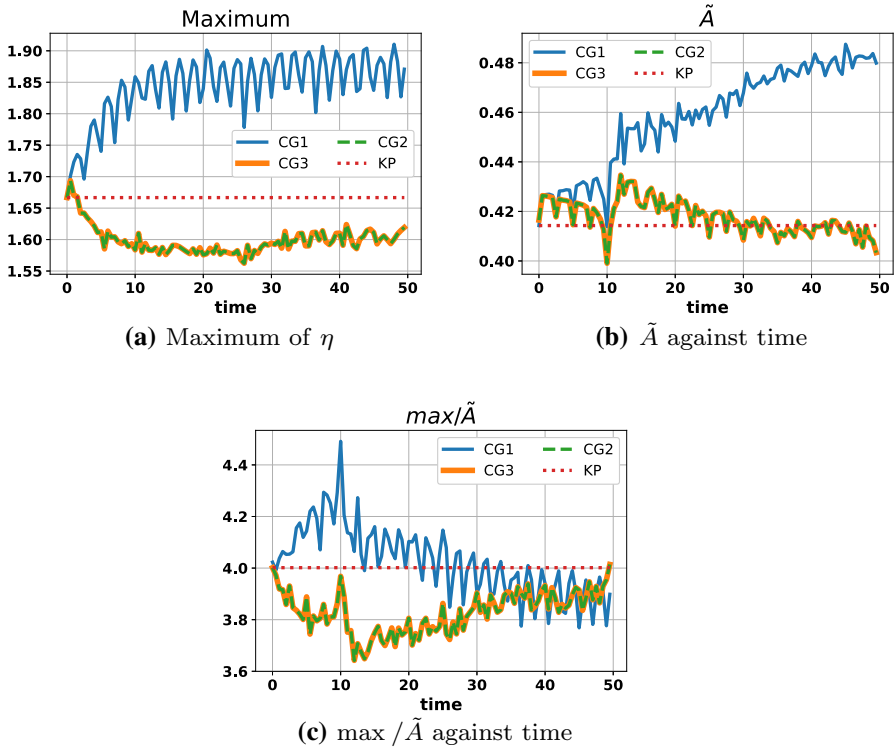
In discussing the simulations, we will address the following points: first, we demonstrate that the difference in simulations between the fully periodic and  $x$ -periodic domain is sufficiently minor to warrant usage of the smaller  $x$ -periodic domain; second, simulations with the higher-order polynomial resolution CG2 and CG3 are more suitable for the above numerical experiments than the simulation with CG1; third, BLE can explain short-crested high-amplitude crossing waves; and, finally, BLE numerical solutions are consistent with ones of KPE, that is, their difference is within order  $\epsilon$ . An



**Fig. 8** SP3–CG2: demonstration that using the half-periodic domain strategy compares sufficiently well with the full  $x$ - and  $y$ -periodic domain strategy. The scaled amplitude  $\tilde{A}$  relevant for BLE is used, using (8a), for both SP2 and SP3 diagnostics

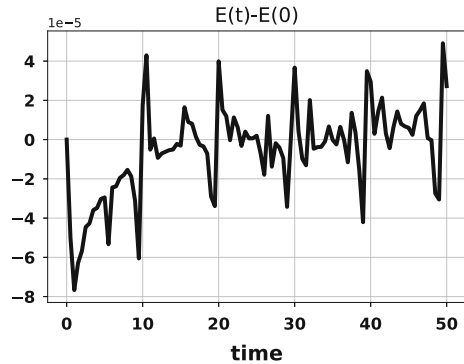
overview of the amplitude and maximum amplifications attained in each simulation is provided in Table 4.

Regarding the first point on domain periodicity, we show this by performing three-soliton interaction simulations (SP3) in a domain periodic in both the  $x$ - and  $y$ -directions, as well as the half-periodic domain in a channel with solid walls and periodicity in the  $x$ -direction only, as described in Sect. 4.2. The maximum values of

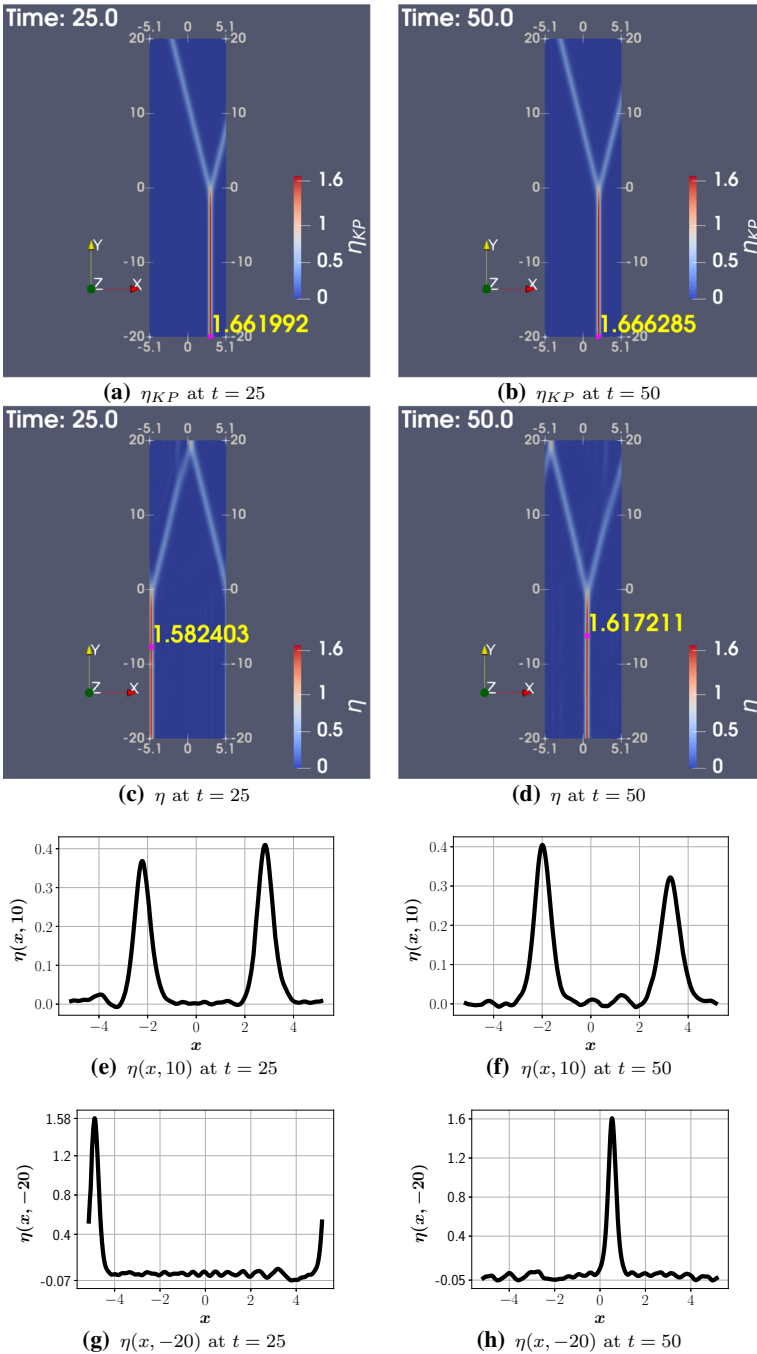


**Fig. 9** Results obtained from SP2 simulations, employing different basis function spaces, CG1, CG2, and CG3. (a) Maximum values of  $\eta$  over time. While the result with CG1 is overshoot, the results with CG2 and CG3 are stable and similar to each other. (b)  $\tilde{A}(t) := \max_x(\eta(\cdot, 10, t))$  versus time. (c) Amplification  $\max(\eta)/\tilde{A}$  against time

**Fig. 10** Deviation of energy  $E(t) - E(0)$  in time for simulation SP2-CG2, where  $E(t)$  is defined in (2) for the BLE system. The energy deviation from  $E(0) = 19.01$  is of the order of  $10^{-5}$ , which indicates a stable numerical integration



$\eta$  and the relative difference is shown in Fig. 8. The more computationally expensive simulation crashes before the end-time is reached, but the proximity between the two simulations shows that we are warranted to use the half-domain computational strategy for SP3.



**Fig. 11** SP2-CG2: (a, b) re-scaled KPE solution  $\eta_{KP}$  using (8a), and (c, d) numerical solution of  $\eta$ , at times  $t = 25$  (panels on the left) and  $t = 50$  (panels on the right), respectively. Cross-sections of  $\eta$  on  $y = 10$  are shown in (e, f), and cross sections on  $y = y_* = -20$  are shown in (g, h)

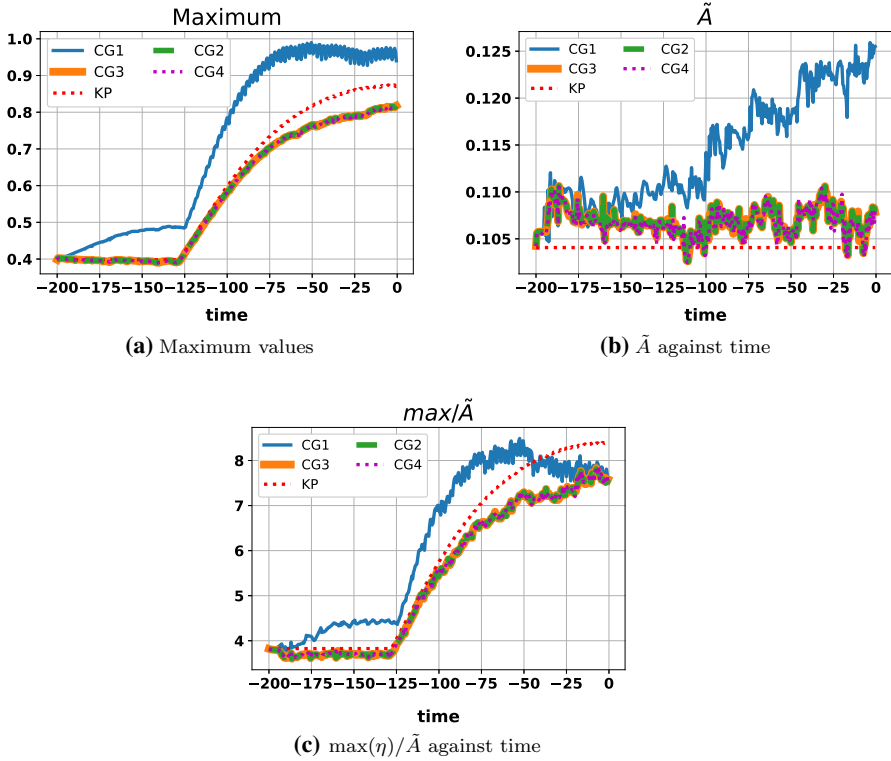
#### 4.4.1 SP2 Simulations

The evolution of the wave amplitude in time, the maximum amplification and the ratio of the two is presented in Fig. 9, for the three polynomial orders CG1/CG2/CG3. The profiles obtained with CG1 are overshoot compared to those of CG2 and CG3, and compared with the exact solutions of the KPE. Hence, the simulation with CG1 seems unreliable with insufficient spatial and possibly temporal resolution, even though the energy oscillations appear to be bounded. Clearly, the results obtained using CG2 and CG3 are close to each other with their point-wise difference in  $L^\infty$  at most  $10^{-4}$ . We can therefore conclude that CG2 and CG3 have converged, and that these computations are therefore reliable. Because computations using CG3 are computationally much more expensive, we focus on explaining the CG2 results next.

Starting from the initial conditions seen in Fig. 6, the solution evolves in time as seen in Fig. 11; top views of solutions at two different times  $t = 25, 50$  are shown for (rescaled) KPE and BLE, as well as cross-sections of the BLE solution in  $y$  at the same times. The location and value of the solution maximum is also seen in the top and bottom panels. The evolution of the respective energy (2) is shown in Fig. 10, indicating bounded oscillations and hence a stable numerical integration. Furthermore, Fig. 9a shows that the maximum of  $\eta$  is maintained around 1.6, while Fig. 9b illustrates that  $\tilde{A}$  is around 0.41. So their amplification turns out to be about 3.8 as seen in Fig. 9c. We note that the oscillations are due to dispersion effects in BLE. Unlike the exact KPE solution  $\eta_{KPE}$ , the numerically-obtained  $\eta$  initially grows in amplitude. Subsequently, dispersion separates small ripples behind the main solitary waves, so both the maximum and  $\tilde{A}$  are seen to decrease for a while. By the time the maximum and  $\tilde{A}$  start to increase again, small ripples have circulated around the periodic domain and meet the main solitary waves. That is why the amplification is oscillating somewhat, but still remains around 3.9. Finally, we note that our result is consistent with the amplification of circa 3.6 found in Gidel et al. [11] and that of 3.9 found in Ablowitz and Curtis [1].

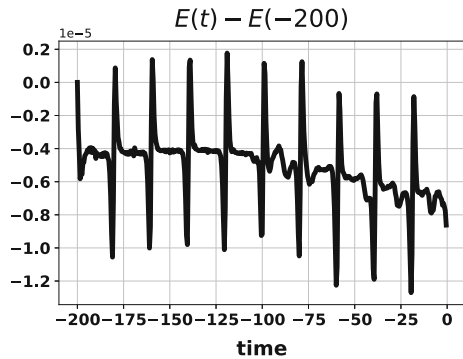
#### 4.4.2 SP3 Simulations

In SP3 simulations with three soliton interactions, an amplification of 7.8 is attained despite the initial increasing, separation of ripples and oscillation of amplitudes, as seen in Fig. 12, similarly to the phenomena observed in SP2 where a 5% error was found between numerically-obtained and exact amplifications (3.8 vs. 4.0). The amplification of 7.8 for three-soliton interactions is within 7.25% error when compared to the amplification of 8.41 for the exact solution of the KPE, obtained for the same value of  $\delta \approx 0.0014$  (see Fig. 5 and Table 2). The BLE numerical solutions are observed to be only different relative to the exact solution of the KPE within  $O(\epsilon)$ , with  $\epsilon = 0.05$  here, see Figs. 14 and 15. This means that the BLE modelling is consistent with the KPE modelling, in that extreme-wave propagation and creation exists and is sustained in the BLE as well. The bounded energy fluctuations in Fig. 13 confirm that SP3-CG2 is stable. Finally, the time evolution of the free surface can be seen in the video available in [16], where all variables are transformed to dimensional units using  $\epsilon = 0.05$ ,  $\tilde{A} = 0.5$ , and a rest water level  $H_0 = 20\text{m}$ . The video ends with two figures showing

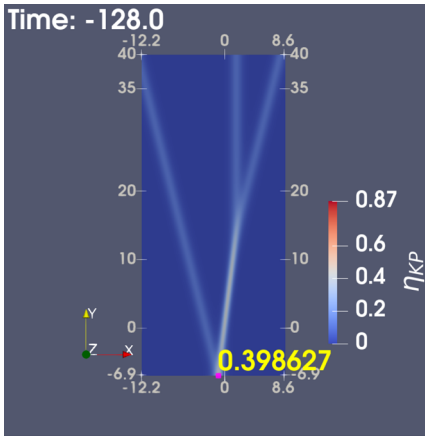


**Fig. 12** Results obtained from SP3 simulations, employing finite-element polynomials of order CG1, CG2, CG3 and CG4. (a) Maximum values of  $\eta$  over time. CG1 is not resolved (may not be stable) and yields maximum values that are too large. (b)  $\tilde{A}(t) := \max_x(\eta(\cdot, 35, t))$  indicating that the basic amplitude is unstable for CG1. (c) Amplification  $\max(\eta)/\tilde{A}$  against time. Both CG2 and CG3 appear to have converged and are reliable. Results obtained with CG4 further confirm the CG2/3 results but with reduced dispersion and amplitude errors

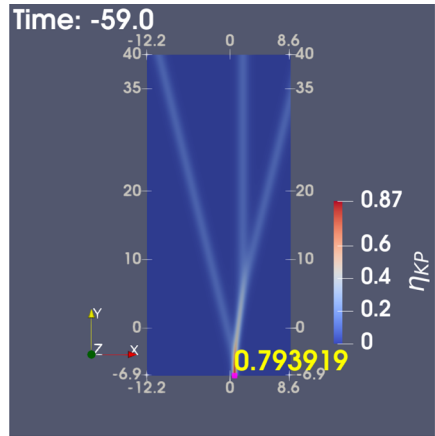
**Fig. 13** Deviation of energy  $E(t) - E(-200)$  in time for simulation SP3-CG2, where  $E(t)$  is defined in (2) for the BLE system. The energy deviation from  $E(-200) = 3.11$  is of the order of  $10^{-5}$ , which indicates a stable numerical integration



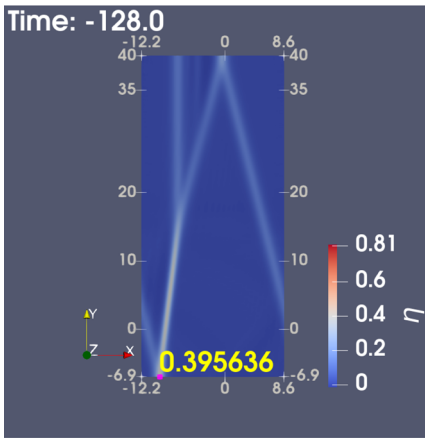




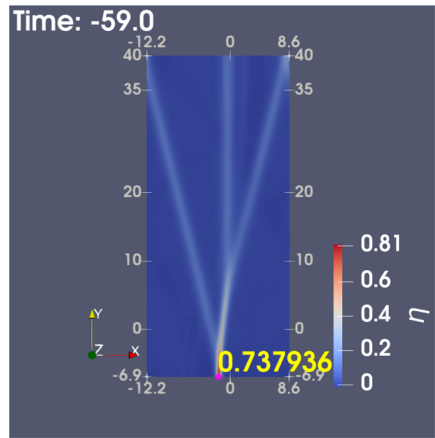
(a)  $\eta_{KP}$  at  $t = -128$



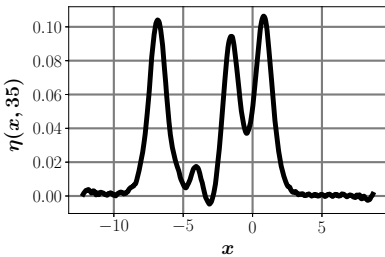
(b)  $\eta_{KP}$  at  $t = -59$



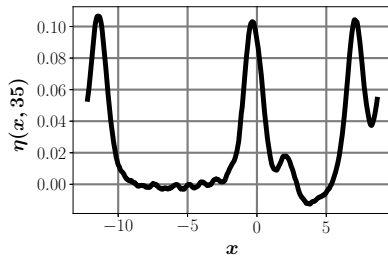
(c)  $\eta$  at  $t = -128$



(d)  $\eta$  at  $t = -59$

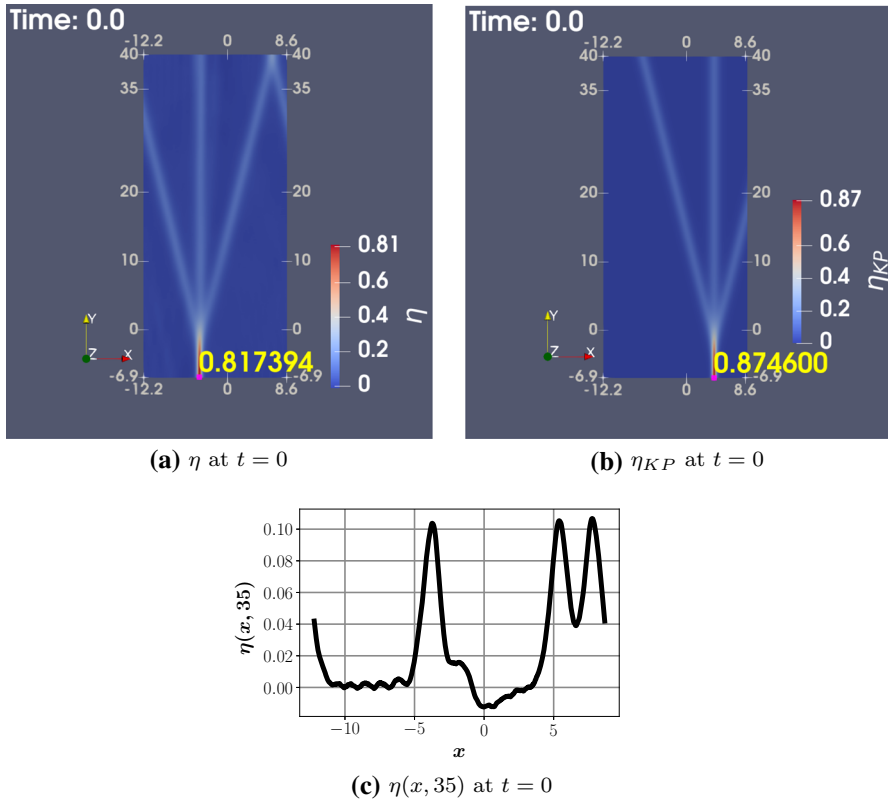


(e)  $\eta(x, 35)$  at  $t = -128$



(f)  $\eta(x, 35)$  at  $t = -59$

**Fig. 14** SP3-CG2: (a, b) re-scaled KPE solution  $\eta_{KP}$  using (8a), and (c, d) numerical solution of  $\eta$ , at times  $t = -128$  (panels on the left) and  $t = -59$  (panels on the right), respectively. At  $t = -128$ , the maximum of  $\eta$  in both (a, c) first reaches the symmetry boundary. (e, f) show that the height of  $\eta$  in the far field  $y = 35$  is close to the initial height 0.1040, at both times  $t = -128$  and  $t = -59$



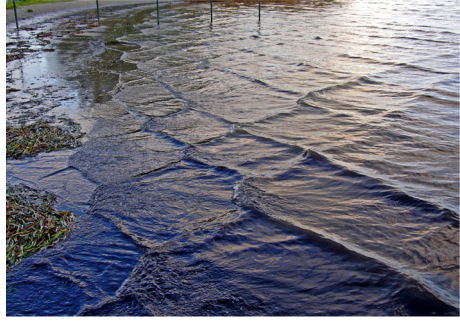
**Fig. 15** SP3-CG2: continued from Fig. 14: (a, b) show that the global maximum values of  $\eta$  and  $\eta_{KP}$  are attained at  $t = 0$ . (c) shows  $\eta$  in the far field ( $y = 35$ ) at  $t = 0$ , where the height can be seen to retain its initial value 0.1040, similarly to Fig. 12e, f

the time evolution and spatial location of the free-surface maximum, for both KPE and BLE. We note that running the simulation for much longer allows for repetition of the maximum amplification in time, due to the cnoidal-wave structure of the solution (see also video reference in [16]).

## 5 Summary and Conclusions

Extreme waves may arise randomly in crossing seas comprising waves aligned with two or more directions of travel. Linear superposition with weak nonlinearity has been proposed to explain so-called “everyday” extreme waves, those with an amplitude of at least twice that of those in the surrounding ambient sea. Extreme waves may alternatively arise through higher-order nonlinear effects in statistical distributions; these have been simulated and observed to lead to extreme waves. In the former case, it has been proposed to reserve the term “rogue waves” for exceptionally high and steep water waves. Thus motivated, we have investigated exact and numerical “rogue-wave” solu-

**Fig. 16** Cnoidal waves created by crossing seas (photo courtesy: V. Zwart; also used with permission in [6])



tions of water-wave equations for crossing seas, but here in a deterministic manner. Two exact web-solitons have been analysed for the unidirectional Kadomtsev–Petviashvili equation (KPE), and numerical solutions have been simulated for the bi-directional and higher-order Benney–Luke equations (BLE) in two horizontal dimensions, the latter seeded at an initial time by either one of the two exact web-soliton solutions of the KPE. The first exact solution of the KPE is well known and consists of two main soliton branches of amplitude  $\tilde{A}$ , interacting at an angle, and leading to a soliton branch with fourfold amplitude  $4\tilde{A}$ . The second exact solution of the KPE is less well-known and consists of three main soliton branches, each of amplitude  $\tilde{A}$  in the far field, involving waves coming from three directions, leading to a wave splash of extreme height at one point in space and time. We have analysed this exact three-line soliton solution in detail under a symmetric set-up and show in a novel analysis that its maximum amplification peaks at  $9\tilde{A}$  for a certain angle between a main solitary wave travelling in a given direction (we use the positive Cartesian  $x$ -direction) and two other solitary waves whose directions of travel are symmetrically disposed thereto. However, due to a phase shift, it is currently possible to prove the theoretical nine-fold amplification only analytically for the KPE, in terms of a suitably defined small parameter  $\delta$ , and it is an open question how to set up the numerical BLE simulation in the limit  $\delta \rightarrow 0$ . This is because the spatial location of the maximum amplification is determined only for positive values of  $\delta$ , as shown in Sect. 3.4. Finally, we note that the limit of  $\delta \rightarrow 0$  also provides the optimal angle for maximum amplification which is given by  $\tan \theta = \sqrt{8\tilde{A}}$  for KPE (this is found from Eq. (26b) with  $\lambda = 1$ ). The corresponding optimal angle for BLE (and the respective dimensional equations),  $\theta_{\text{BLE}}$ , can be calculated through  $\tan \theta_{\text{BLE}} = \sqrt{\epsilon} \left(\frac{9}{2}\right)^{1/6} \tan \theta = \sqrt{\frac{12A}{H_0}}$  (by using (8) and (26)), with dimensional far-field soliton amplitude  $A$  and (rest) water depth  $H_0$ .

Computational simulation of such solutions is challenging and potentially cumbersome given both the speed of wave propagation and infinite nature of the 2-D solution domain. Given the symmetries inherent in the two KPE web-soliton solutions, we have (necessarily artificially) imposed them as initial conditions on a 2-D computational domain that is sufficiently large (in an experimentally determined sense) and periodic in both  $x$ - and  $y$ -directions. Additionally, by using a symmetry relative to a fixed value of  $y$ , we have shown that it suffices to conduct computations on only a half-domain, bounded by two solid walls in the  $y$ -direction and periodic in the  $x$ -direction. By doing

so, we have effectively created cnoidal-wave solutions of crossing seas (see, for example, Fig. 16). Hence, we have seeded simulations of the BLE with two exact solutions of the KPE at some initial time, and have used geometric or variational (finite-element) integrators to discretise the BLE in space and time. The numerical methodology is specifically designed to avert artificial numerical damping of wave amplitudes, as it allows conservation of phase-space volume and mass, and keeps energy oscillations small and bounded. Simulations at different resolutions (using polynomial or  $p$ -refinement) reveal that these two types of extreme waves or web-solitons reach maximum-amplification factors of  $\sim 3.6$ – $4.0$  when the corresponding factor for the exact solutions of the KPE is  $4.0$ , and of  $\sim 7.8$  when it is  $8.4$ . Deviations from the exact KPE solutions have moreover emerged because of minor secondary waves, created after the initial time, which induce small-scale oscillations in the far-field soliton(s) of original amplitude  $\bar{A}$ ; this has the effect of eroding the (computed) maximum amplification. Computed maximum amplitudes and amplifications are summarised in Table 4 and depicted in Figs. 9 and 12.

The final soliton splash examined in our simulations does indeed create a rogue wave in the sense of the definition thereof based on the abnormality-index calculation (see Appendix C). In the case of three interacting line solitons, we find an abnormality index of  $AI = \max(\eta)/H_s = 4.0$ , where  $H_s$  is the “significant wave height”,<sup>1</sup> and the maximum value of  $\eta$  is the yellow text annotating Fig. 15a. Details of this calculation are included in Appendix C.

Several research extensions based on the present study emerge naturally. An amalgamation of bespoke numerics and appropriate wave theory could seed simulations able to achieve (more closely) the theoretically predicted nine-fold maximum amplification factor. The three-line-soliton solution for the BLE could be simulated in a suitable channel geometry, as indicated in Fig. 1. The two web-soliton solutions could be simulated using potential-flow water-wave equations, possibly combined with a wave-breaking parametrisation scheme, in both periodic and channel-geometry settings. Such potential-flow simulations could offer a means of assessing how realistic these “KPE/BLE-rogue” waves are and whether they would endure sufficiently to attain their theoretical maximum amplitudes.

**Acknowledgements** It is a pleasure to acknowledge the various discussions on the [3, 3] KP-soliton with Professor Yuji Kodama, at the 2011 workshop in Dresden as well as later, when coefficients for  $k_1, \dots, k_6$  were kindly supplied and facilitated our numerical testing. The original codes for testing the KPE-solutions were set up by Chloe Baker [2] and extended for inclusion into *Firedrake* by Dr Floriane Gidel [11]. OB and MK acknowledge support via the EU project “Eagre: high-seas wave-impact modelling” (GA859983) and JC by the Sejong Science Fellowship Grant “Research on approximate hierarchy among abnormal wave models” (2021R1C1C2008763), funded by the National Research Foundation of Korea and the Korean government (MSIT).

**Data availability** Codes and instructions are found on GitHub (<https://github.com/cjunho/cjh.git>) and will be released also on Zenodo (<https://zenodo.org/record/6477584#.YmKcAy8w2t9>).

## Declaration

**Conflict of interest** The authors declare that they have no conflict of interest.

<sup>1</sup> Defined as four times the standard deviation of the surface elevation [9].

**Open Access** This article is licensed under a Creative Commons Attribution 4.0 International License, which permits use, sharing, adaptation, distribution and reproduction in any medium or format, as long as you give appropriate credit to the original author(s) and the source, provide a link to the Creative Commons licence, and indicate if changes were made. The images or other third party material in this article are included in the article’s Creative Commons licence, unless indicated otherwise in a credit line to the material. If material is not included in the article’s Creative Commons licence and your intended use is not permitted by statutory regulation or exceeds the permitted use, you will need to obtain permission directly from the copyright holder. To view a copy of this licence, visit <http://creativecommons.org/licenses/by/4.0/>.

### A Conservation of Energy

The total energy  $E(t)$  as defined in Eq. (2) is conserved at all times, as shown below. Multiplying Eq. (1b) by  $(-\partial_t \Phi)$  and integrating in  $\Omega_h$ , gives

$$\begin{aligned}
 0 &= \int_{\Omega_h} -\partial_t \Phi \left( \partial_t \eta - \frac{\mu}{2} \partial_t \nabla^2 \eta + \nabla \cdot ((1 + \epsilon \eta) \nabla \Phi) - \frac{2\mu}{3} \nabla^4 \Phi \right) dx dy \\
 &= \int_{\Omega_h} \left[ \partial_t \eta \left( -\partial_t \Phi + \frac{\mu}{2} \partial_t \nabla^2 \Phi \right) - \nabla \cdot ((1 + \epsilon \eta) \nabla \Phi) \partial_t \Phi + \frac{2\mu}{3} (\nabla^4 \Phi) (\partial_t \Phi) \right] dx dy \\
 &= \int_{\Omega_h} \left[ \partial_t \eta \left( \eta + \frac{\epsilon}{2} |\nabla \Phi|^2 \right) + (1 + \epsilon \eta) \nabla \Phi \cdot \nabla \partial_t \Phi + \frac{2\mu}{3} (\nabla^2 \Phi) (\nabla^2 \partial_t \Phi) \right] dx dy \\
 &= \frac{d}{dt} \int_{\Omega_h} \left[ \frac{1}{2} \eta^2 + \frac{1}{2} (1 + \epsilon \eta) |\nabla \Phi|^2 + \frac{\mu}{3} (\nabla^2 \Phi)^2 \right] dx dy \\
 &= \frac{dE(t)}{dt},
 \end{aligned} \tag{49}$$

where the other equations in (1) were used to get to the final result.

### B Further Proof of Maximum Amplification

*A posteriori*, we will confirm that (40) is the maximum value of (9), provided that  $Y_*$  and  $\tau_*$  are known *a priori*. As in the main text, let  $A_{pqr} = k_r^2(k_q - k_p) + k_q^2(k_p - k_r) + k_p^2(k_r - k_q)$ , for  $p < q < r$ . Expression (22) for  $K(X, Y, \tau)$ , after some algebra, can be shown to be equivalent to

$$\begin{aligned}
 K(X, Y, \tau) &= C_1 \left\{ C_2 \left( A_{135} \cosh((k_1 + k_3 + k_5)X + (k_1^3 + k_3^3 + k_5^3)\tau) \right. \right. \\
 &\quad \left. \left. + A_{236} \cosh((k_2 + k_3 + k_6)X + (k_2^3 + k_3^3 + k_6^3)\tau) \right) \right. \\
 &\quad \left. + C_3 A_{136} \cosh(k_3 X + k_3^3 \tau) \cosh((k_1^2 - k_2^2)(Y - Y_*)) \right\}, \tag{50a}
 \end{aligned}$$

where we have defined the coefficients

$$C_1 = e^{(k_1^2+k_3^2+k_5^2)Y} e^{(k_1^2-k_2^2)Y_*}, \quad C_2 = 2e^{-(k_1^2-k_2^2)Y_*}, \quad C_3 = 4. \tag{50b}$$

We can now calculate the following derivatives of  $K$  from (50a),

$$\begin{aligned}
 K_X = C_1 \Big\{ & C_2 \left( (A_{135}(k_1 + k_3 + k_5) \sinh((k_1 + k_3 + k_5)X + (k_1^3 + k_3^3 + k_5^3)\tau) \right. \\
 & + A_{236}(k_2 + k_3 + k_6) \sinh((k_2 + k_3 + k_6)X + (k_2^3 + k_3^3 + k_6^3)\tau) \\
 & \left. + C_3 A_{136} k_3 \sinh(k_3 X + k_3^3 \tau) \cosh((k_1^2 - k_2^2)(Y - Y_*)) \right) \Big\}, \quad (51a)
 \end{aligned}$$

and

$$\begin{aligned}
 K_{XX} = C_1 \Big\{ & C_2 \left( A_{135}(k_1 + k_3 + k_5)^2 \cosh((k_1 + k_3 + k_5)X + (k_1^3 + k_3^3 + k_5^3)\tau) \right. \\
 & + A_{236}(k_2 + k_3 + k_6)^2 \cosh((k_2 + k_3 + k_6)X + (k_2^3 + k_3^3 + k_6^3)\tau) \\
 & \left. + C_3 A_{136} k_3^2 \cosh(k_3 X + k_3^3 \tau) \cosh((k_1^2 - k_2^2)(Y - Y_*)) \right) \Big\}. \quad (51b)
 \end{aligned}$$

Looking at the ratios  $K_{XX}/K$  and  $K_X/K$  which are used to define  $u$  in (9), it becomes evident that  $u$  is symmetric about  $Y = Y_*$  (since  $C_1$  cancels from both numerator and denominator), as well as about  $X = 0$  when  $\tau = 0$ . Therefore the solution  $u$  given in (9) satisfies two symmetries: first,  $u(X, Y - Y_*, \tau) = u(X, Y + Y_*, \tau)$ , and second,  $u(X, Y, 0) = u(-X, Y, 0)$ ; when both of these symmetries are valid, then the three solitary waves (23a)-(23c) gather at  $(0, Y_*, 0)$ .

We will now prove that  $(0, Y_*, 0)$  is the maximum point of (9) in two steps:

- *Step 1:*  $\max u(X, Y, 0) = u(X, Y_*, 0)$ .

Considering  $X$  is fixed, we concentrate on the  $Y$ -dependence of  $u$  as follows

$$u(X, Y, 0) = \frac{K \partial_{XX} K - (\partial_X K)^2}{K^2} = \frac{\alpha + \beta \cosh(Y - Y_*) + \gamma \cosh^2(Y - Y_*)}{(\zeta + \xi \cosh(Y - Y_*))^2}, \quad (52)$$

where we have defined the following parameters (which are all functions of  $X$  only)

$$\begin{aligned}
 \alpha = C_1 C_2 \Big\{ & A_{135}(k_1 + k_3 + k_5)^2 \cosh((k_1 + k_3 + k_5)X) \\
 & + A_{236}(k_2 + k_3 + k_6)^2 \cosh((k_2 + k_3 + k_6)X) \Big\} \\
 & \times C_1 C_2 \Big\{ A_{135} \cosh((k_1 + k_3 + k_5)X) + A_{236} \cosh((k_2 + k_3 + k_6)X) \Big\} \\
 & - (C_1 C_2)^2 \Big\{ A_{135}(k_1 + k_3 + k_5) \sinh((k_1 + k_3 + k_5)X) \\
 & + A_{236}(k_2 + k_3 + k_6) \sinh((k_2 + k_3 + k_6)X) \Big\}^2, \quad (53a)
 \end{aligned}$$

$$\begin{aligned}
 \beta = C_1 C_2 \Big\{ & A_{135}(k_1 + k_3 + k_5)^2 \cosh((k_1 + k_3 + k_5)X) \\
 & + A_{236}(k_2 + k_3 + k_6)^2 \cosh((k_2 + k_3 + k_6)X) \Big\}
 \end{aligned}$$

$$\begin{aligned}
 & - C_1 C_2 \left\{ A_{135} (k_1 + k_3 + k_5) \sinh \left( (k_1 + k_3 + k_5) X \right) \right. \\
 & \left. + A_{236} (k_2 + k_3 + k_6) \sinh \left( (k_2 + k_3 + k_6) X \right) \right\} \\
 & \times C_3 A_{136} k_3 \sinh(k_3 X), \tag{53b}
 \end{aligned}$$

$$\gamma = (C_3 A_{135} k_3)^2, \tag{53c}$$

$$\zeta = C_1 C_2 \left( A_{135} \cosh \left( (k_1 + k_3 + k_5) X \right) + A_{236} \cosh \left( (k_2 + k_3 + k_6) X \right) \right), \tag{53d}$$

$$\xi = C_1 C_3 A_{136} \cosh(k_3 X). \tag{53e}$$

Given the cosh-dependence in (52), it can be observed that the maximum of  $u(X, Y, 0)$  must lie at  $Y = Y_*$ . Of course, this is not a constructive argument given that we needed to have an alternative proof for determining  $Y_*$  in the first place, since it was used to obtain (50a). However,  $Y_*$  is unambiguously determined by the symmetry of the set up.

- *Step 2:*  $\max u(X, Y_*, 0) = u(0, Y_*, 0)$ .

We define

$$G(X) = g_1 \cosh(b_1 X) + g_2 \cosh(b_2 X) + g_3 \cosh(b_3 X), \tag{54}$$

where the cosh arguments are assumed to satisfy  $b_1 \leq b_2 \leq b_3$ . The derivatives of this function are

$$G_X = g_1 b_1 \sinh(b_1 X) + g_2 b_2 \sinh(b_2 X) + g_3 b_3 \sinh(b_3 X), \tag{55a}$$

$$G_{XX} = g_1 b_1^2 \cosh(b_1 X) + g_2 b_2^2 \cosh(b_2 X) + g_3 b_3^2 \cosh(b_3 X), \tag{55b}$$

so we find

$$\begin{aligned}
 \partial_{XX} \ln(G(X)) &= \frac{G_{XX} G - (G_X)^2}{G^2} \\
 &= \frac{g_1 b_1^2 + g_2 b_2^2 + g_3 b_3^2}{G^2} \tag{55c}
 \end{aligned}$$

$$\begin{aligned}
 & + \frac{g_1 g_2 (b_1^2 + b_2^2) \cosh \left( (b_2 - b_1) X \right)}{G^2} \\
 & + \frac{g_1 g_3 (b_1^2 + b_3^2) \cosh \left( (b_3 - b_1) X \right) + g_2 g_3 (b_2^2 + b_3^2) \cosh \left( (b_3 - b_2) X \right)}{G^2}. \tag{55d}
 \end{aligned}$$

Since (55c) is the reciprocal of a summation of the cosh-functions, (55c) has the maximum at  $X = 0$ . Moreover, (55d) also has its maximum at  $X = 0$  due to the following inequality

$$\max \left\{ \cosh \left( (b_2 - b_1) X \right), \cosh \left( (b_3 - b_1) X \right), \cosh \left( (b_3 - b_2) X \right) \right\} \leq \cosh(b_3 X). \tag{56}$$

Therefore, the maximum of  $\partial_{XX} \ln G$  lies at  $X = 0$ . Finally, we claim that  $G(X) = K(X, Y_*, 0)$ ; this is clear by finding  $K(X, Y_*, 0)$  from (50a) and comparing with

the expression for  $G$  in (54), where we set

$$g_1 = C_1 C_2 A_{135}, \quad g_2 = C_1 C_3 A_{136}, \quad g_3 = C_1 C_2 A_{236}, \quad (57a)$$

$$b_1 = k_1 + k_3 + k_5, \quad b_2 = k_3, \quad b_3 = k_2 + k_3 + k_6, \quad (57b)$$

such that  $b_1 < b_2 < b_3$  is satisfied. This leads us to  $u(X, Y_*, 0) = 2\partial_{XX} \ln K(X, Y_*, 0) = 2\partial_{XX} \ln G(X)$ . As a consequence, the maximum of  $u(X, Y_*, 0)$  lies at  $X = 0$ .

Now that the two steps above are proved, we can conclude that

$$\max u(X, Y, \tau) = \max_X \max_Y u(\cdot, \cdot, 0) = \max_X u(\cdot, Y_*, 0) = u(0, Y_*, 0). \quad (58)$$

## C Abnormality Index

Based on the results of simulation SP3, we can calculate the abnormality index  $AI$  defined as the ratio of the maximum wave amplification,  $\max(\eta)$ , to the significant wave height,  $H_s$ . The maximum of  $\eta$  is attained at  $t = 0$  as shown in Fig. 15a, and the significant wave height is defined as four times the standard deviation of the surface elevation [9]. Hence we need to determine  $H_s$  at  $t = 0$ , i.e. at the time when the surface elevation is maximised. The computational domain in SP3 is  $\Omega_h = [-12.2465, 8.6769] \times [-6.97, 40.03]$  (see also Sect. 4.3.2), which has area  $|\Omega_h| = L_x \times L_y = 20.8934 \times 47 = 981.99$ , so the average of  $\eta$  is

$$\bar{\eta} = \frac{1}{|\Omega_h|} \int_{\Omega_h} \eta(x, y, 0) \, dx \, dy = \frac{23.107}{981.99} = 2.35 \times 10^{-2}, \quad (59)$$

and the standard deviation is

$$\sigma = \left( \frac{1}{|\Omega_h|} \int_{\Omega_h} (\eta(x, y, 0) - \bar{\eta})^2 \, dx \, dy \right)^{1/2} = \sqrt{\frac{2.564}{981.99}} = 5.11 \times 10^{-2}. \quad (60)$$

Therefore the abnormality index is found to be

$$AI = \frac{\max(\eta)}{H_s} = \frac{\max(\eta)}{4\sigma} = \frac{0.8174}{0.2044} = 4.0. \quad (61)$$

## References

1. Ablowitz, M.J., Curtis, C.W.: Conservation laws and web-solutions for the Benney–Luke equation. Proc. R. Soc. A **469**, 20120690 (2013)
2. Baker, C.: Making a splash with solitons. Master's thesis, School of Mathematics, University of Leeds (2017)
3. Benetazzo, A., Arduin, F., Bergamasco, F., Cavaleri, L., Guimarães, P.V., Schwendeman, M., Sclavo, M., Thomson, J., Torsello, A.: On the shape and likelihood of oceanic rogue waves. Sci. Rep. **7**, 8276 (2017)



4. Benney, D., Luke, J.: On the interactions of permanent waves of finite amplitude. *J. Math. Phys.* **43**, 309–313 (1964)
5. Biondini, G., Maruno, K.-I., Oikawa, M., Tsuji, H.: Soliton interactions of the Kadomtsev–Petviashvili equation and generation of large-amplitude water waves. *Stud. Appl. Math.*, 377–394 (2009)
6. Bokhove, O.: Variational water-wave modeling: from deep water to beaches. In: Deleersnijder, H., Schuttelaars (eds) *Mathematics of Marine Modeling*. Springer. (in press) (2022)
7. Bokhove, O., Kalogirou, A.: Variational water wave modelling: from continuum to experiment. In: T.J. Bridges, M.G. Groves, D.P. Nicholls (eds.) *Lectures on the Theory of Water Waves*, LMS Lecture Note Series. Cambridge University Press (2016)
8. Bokhove, O., Kalogirou, A., Zweers, W.: From bore-soliton-splash to a new wave-to-wire wave-energy model. *Water Waves* **1**(2), 217–258 (2019)
9. Dysthe, K., Krogstad, H.E., Muller, P.: Oceanic rogue waves. *Ann. Rev. Fluid Mech.* **40**, 287–310 (2008)
10. Gidel, F.: Variational Water-Wave Models and Pyramidal Freak Waves. PhD thesis, University of Leeds (2018)
11. Gidel, F., Bokhove, O., Kalogirou, A.: Variational modelling of extreme waves through oblique interaction of solitary waves: application to Mach reflection. *Nonlinear Process. Geoph.* **24**(1), 43–60 (2017)
12. Häfner, D., Gemmrich, J., Jochum, M.: Real-world rogue wave probabilities. *Sci. Rep.* **11**, 10084 (2021)
13. Hammack, J., Scheffner, N., Segur, H.: Two-dimensional periodic waves in shallow water. *J. Fluid Mech.* **209**, 567–589 (1989)
14. Hirota, R.: *The Direct Method in Soliton Theory*. Cambridge University Press, Cambridge (2004)
15. Kadomtsev, B.B., Petviashvili, V.I.: The stability of solitary waves in weakly dispersive media. *Dokl. Akad. Nauk SSSR* **192**, 532–541 (1970)
16. Kalogirou, A.: Benney–Luke simulation of three obliquely interacting solitary waves (2022). <https://youtu.be/Dx8-vhXwJSU>
17. Khariff, C., Pelinovsky, E., Slunyaev, A.: *Rogue Waves in the Ocean Advances in Geophysical and Environmental Mechanics and Mathematics*. Springer, Berlin (2009)
18. Kodama, Y.: KP solitons in shallow water. *J. Phys. A Math. Theor.* **43**, 434004 (2010)
19. Kodama, Y.: Personal communication with OB (2011, 2017)
20. Kodama, Y.: *Solitons in Two-Dimensional Shallow Water*. SIAM, Philadelphia (2018). (Exercise 6.7)
21. Kodama, Y., Oikawa, M., Tsuji, H.: Soliton solutions of the KP equation with V-shape initial waves. *J. Phys. A Math. Theor.* **42**(312001), 1–9 (2009)
22. Komen, G.: *Dynamics and Modelling of Ocean Waves*. Cambridge University Press, Cambridge (2008)
23. Li, W., Yeh, H., Kodama, Y.: On the Mach reflection of a solitary wave: revisited. *J. Fluid Mech.* **672**, 326–357 (2011)
24. Luke, J.C.: A variational principle for a fluid with a free surface. *J. Fluid Mech.* **27**, 395–397 (1967)
25. Miles, J.W.: Obliquely interacting solitary waves. *J. Fluid Mech.* **79**(1), 157–169 (1977)
26. Mori, N., Janssen, P.A.E.M.: On kurtosis and occurrence probability of freak waves. *J. Phys. Ocean.* **36**, 1471–1483 (2006)
27. Nikolkina, I., Didenlenkova, I.: Rogue waves in 2006–2010. *Nat. Hazards Earth Syst. Sci.* **11**, 2913–2924 (2011)
28. Pego, R.L., Quintero, J.R.: Two-dimensional solitary waves for a Benney–Luke equation. *Phys. D* **132**, 476–496 (1999)
29. Rathgeber, F., Ham, D.A., Mitchell, L., Lange, M., Luporini, F., McRae, A.T.T., Bercea, G.-T., Markall, G.R., Kelly, P.H.J.: Firedrake: automating the finite element method by composing abstractions. *ACM Trans. Math. Software (TOMS)* **43** (2016)
30. Tayfun, M.A., Fedele, F.: Wave-height distributions and nonlinear effects. *Ocean Eng.* **34**, 1631–1649 (2007)
31. Zakharov, V.E.: Stability of periodic waves of finite amplitude on the surface of a deep fluid. *J. Appl. Mech. Tech. Phys.* **9**, 190–194 (1968)
32. Zweers, W.: Portable bore-soliton-splash (2011). <https://www.youtube.com/watch?v=k7fE5OoQtbs>