

This is a repository copy of *On the roles of AA15 lytic polysaccharide monooxygenases derived from the termite Coptotermes gestroi*.

White Rose Research Online URL for this paper:

<https://eprints.whiterose.ac.uk/185535/>

Version: Accepted Version

Article:

Walton, Paul Howard orcid.org/0000-0002-1152-1480, Lourenco Franco Cairo, Joao Paulo orcid.org/0000-0002-4744-3111, Cannella, David et al. (11 more authors) (2021) On the roles of AA15 lytic polysaccharide monooxygenases derived from the termite *Coptotermes gestroi*. JOURNAL OF INORGANIC BIOCHEMISTRY. 111316. ISSN 0162-0134

<https://doi.org/10.1016/j.jinorgbio.2020.111316>

Reuse

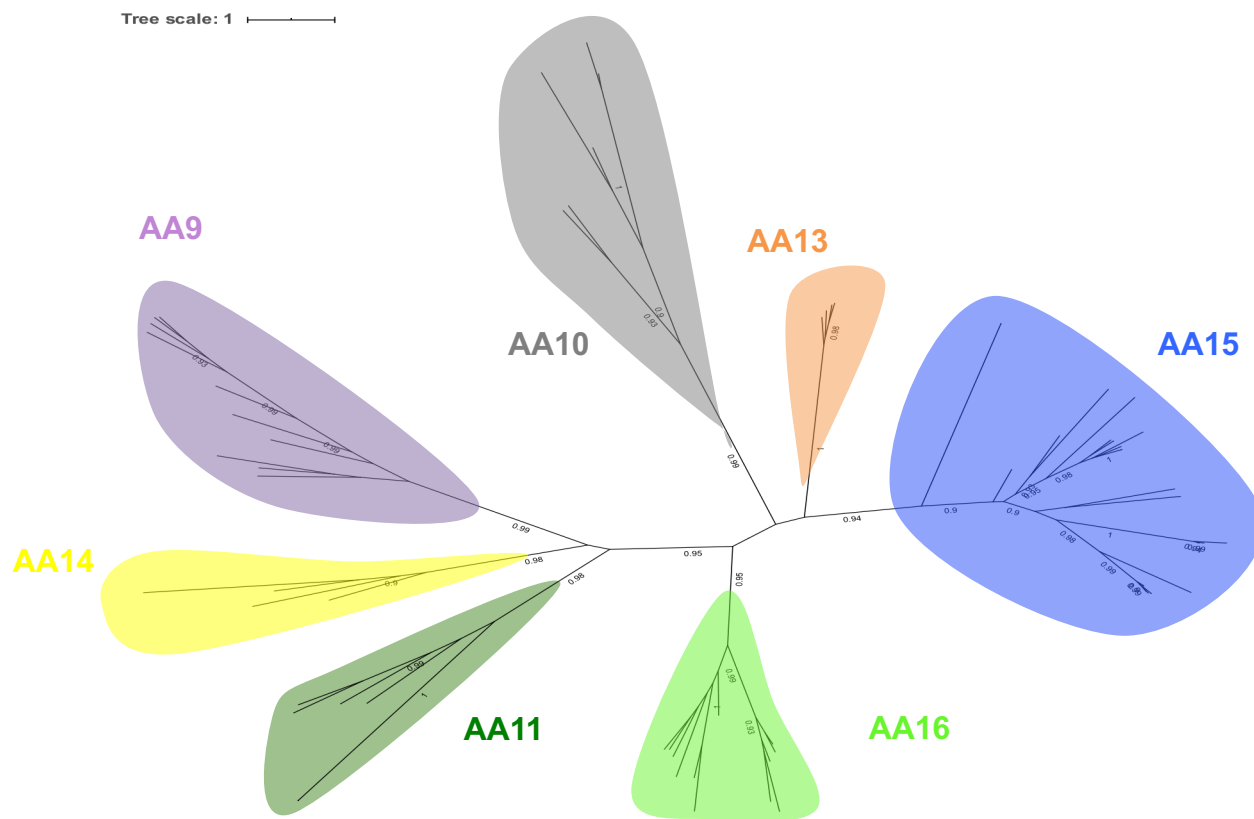
This article is distributed under the terms of the Creative Commons Attribution-NonCommercial-NoDerivs (CC BY-NC-ND) licence. This licence only allows you to download this work and share it with others as long as you credit the authors, but you can't change the article in any way or use it commercially. More information and the full terms of the licence here: <https://creativecommons.org/licenses/>

Takedown

If you consider content in White Rose Research Online to be in breach of UK law, please notify us by emailing eprints@whiterose.ac.uk including the URL of the record and the reason for the withdrawal request.

Figure 1

A. Tree scale: 1



B.

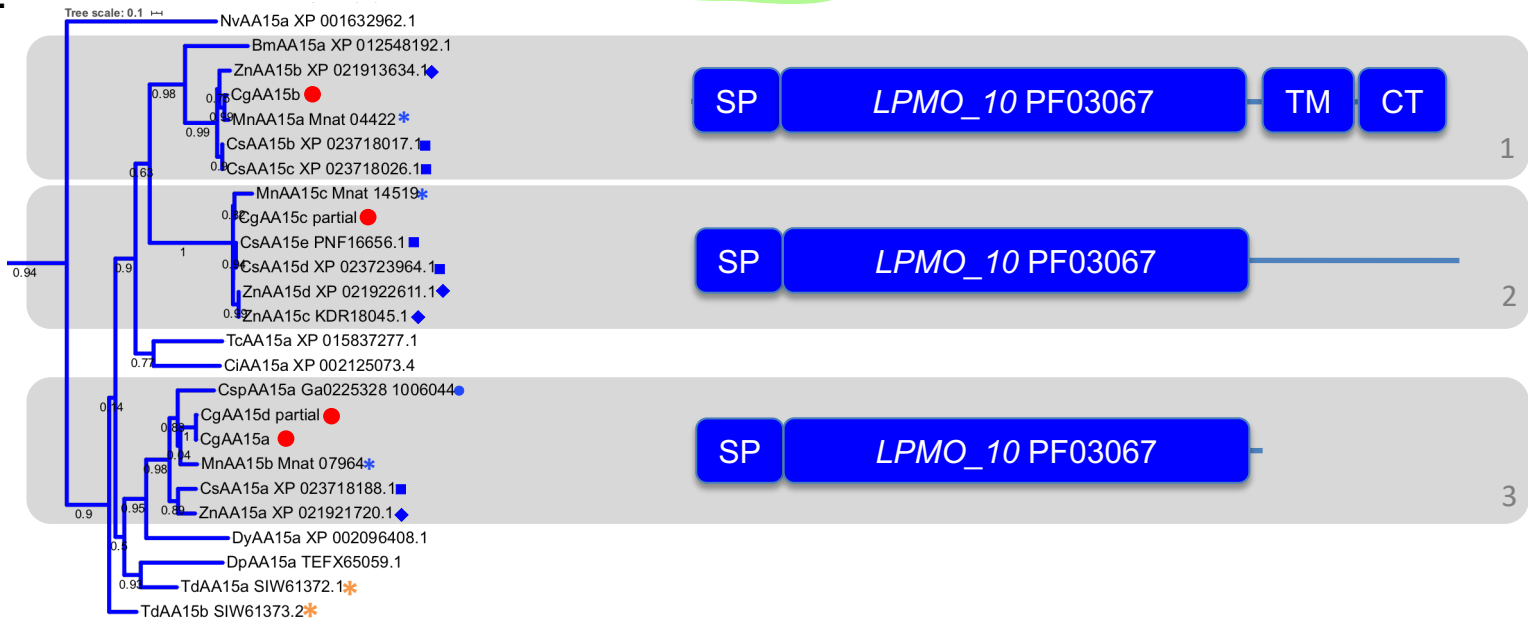
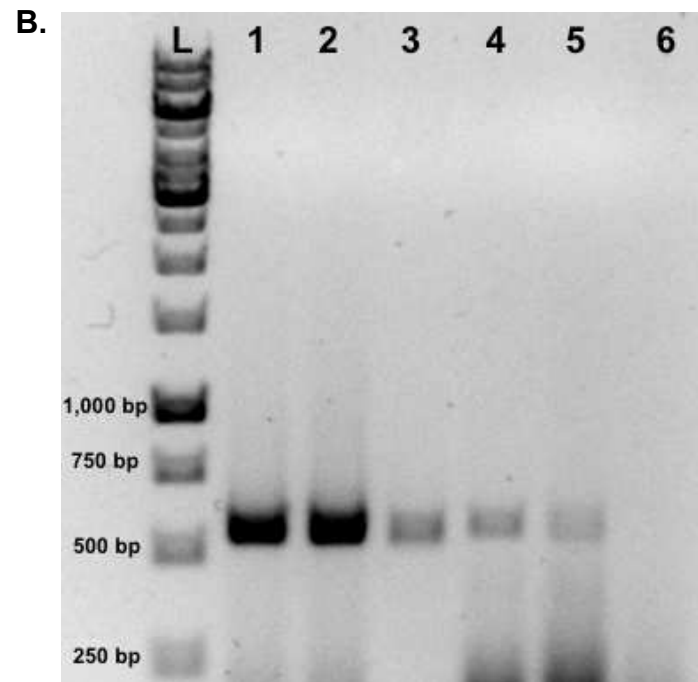
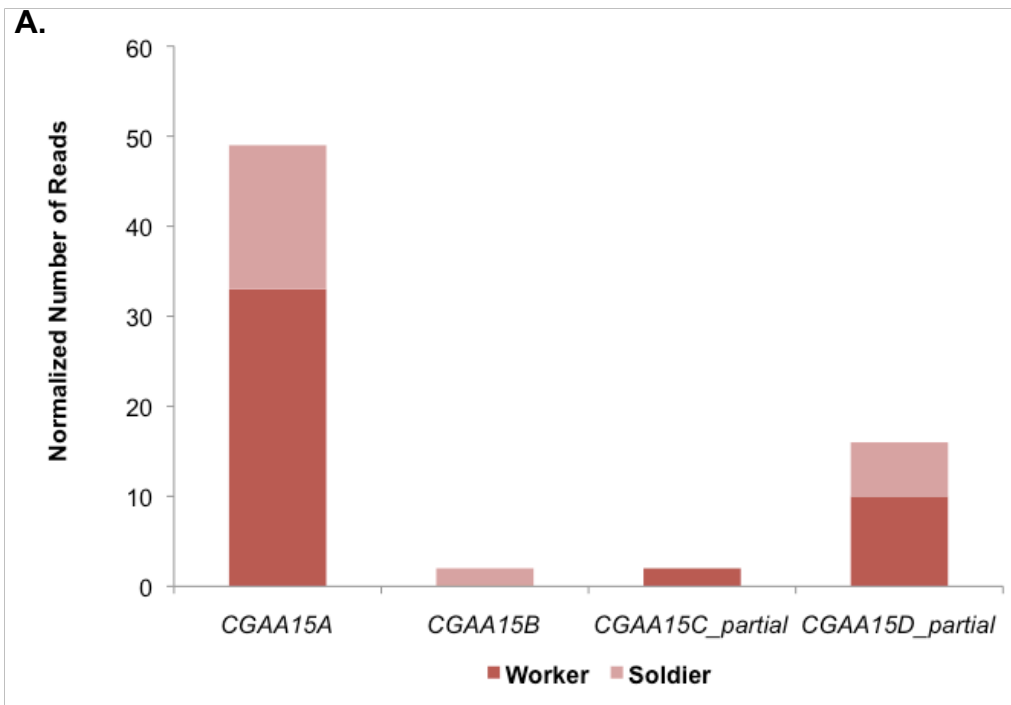
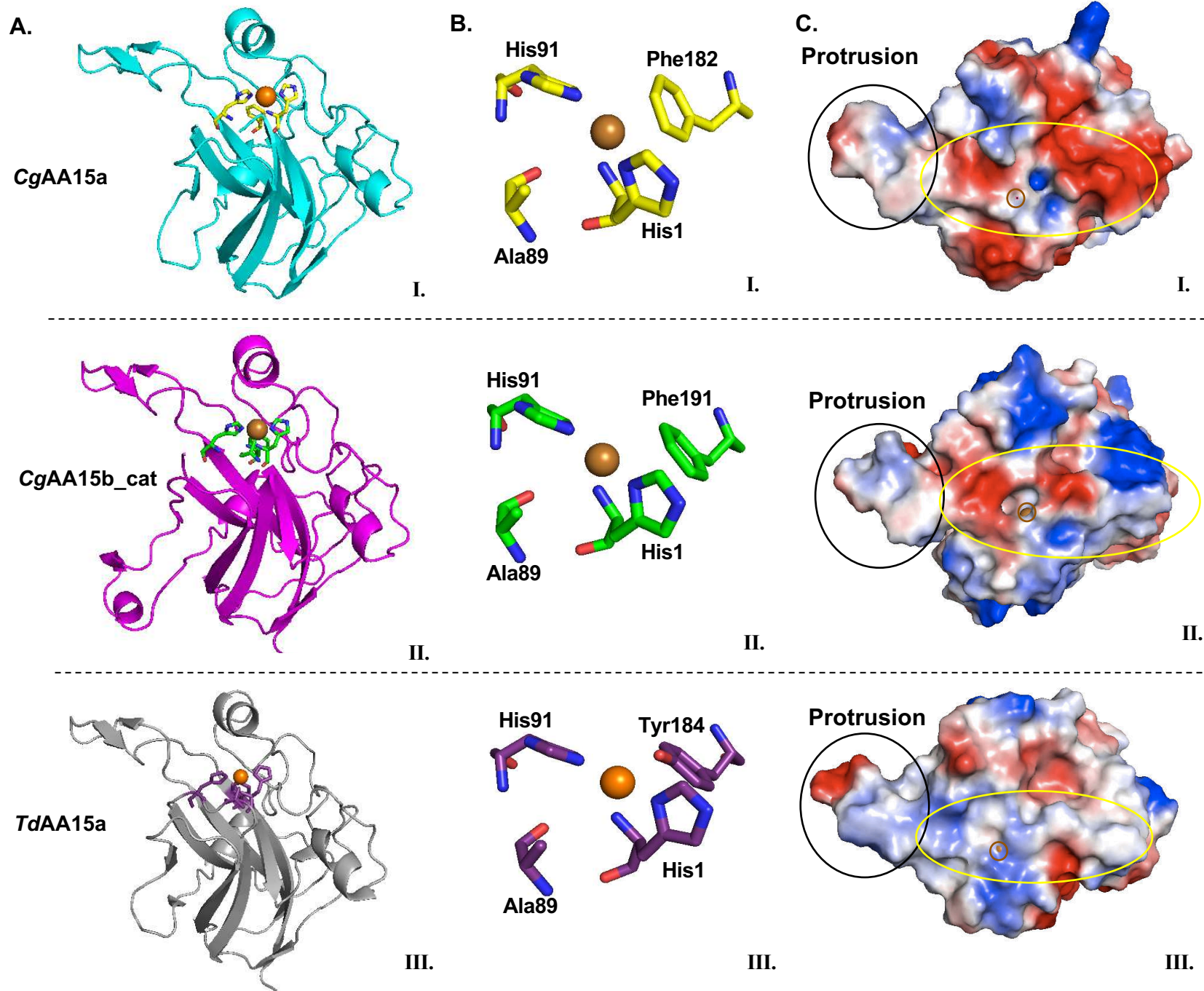


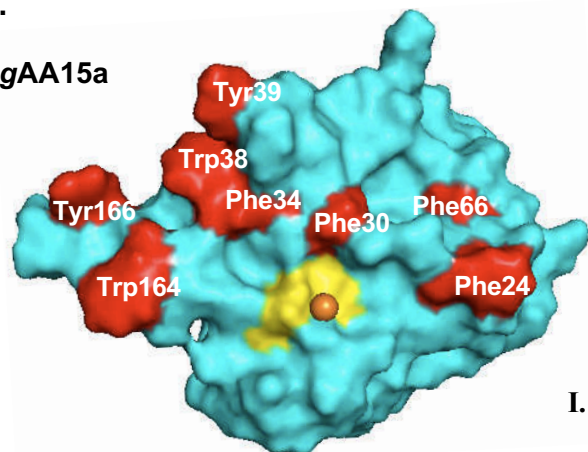


Figure S2

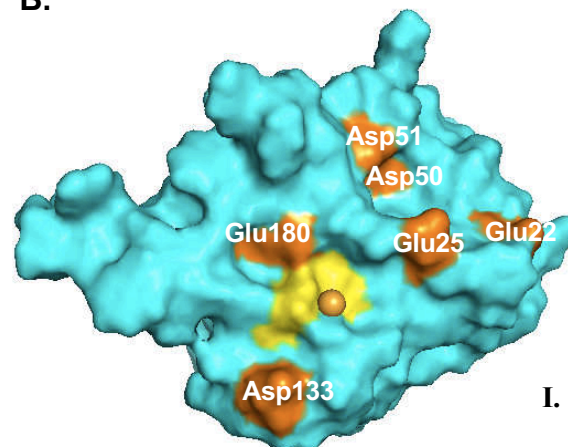




A.

CgAA15a

B.



C.

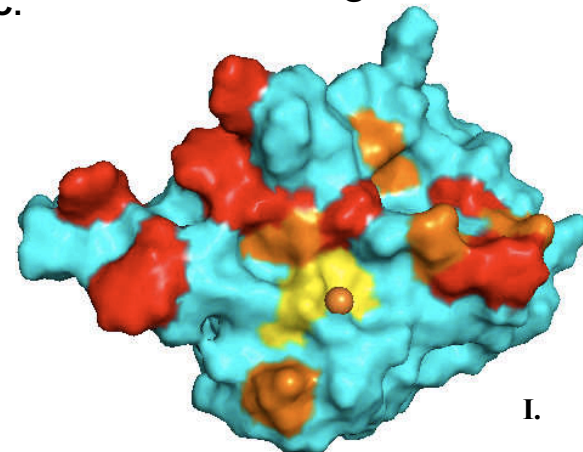
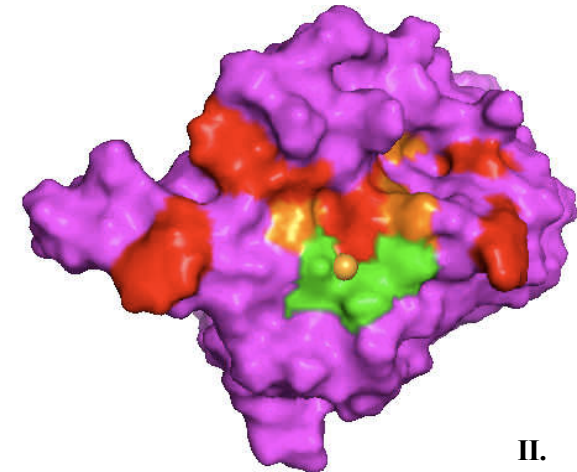
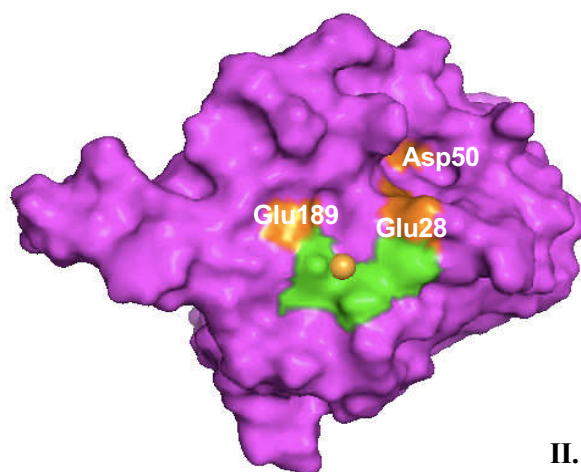
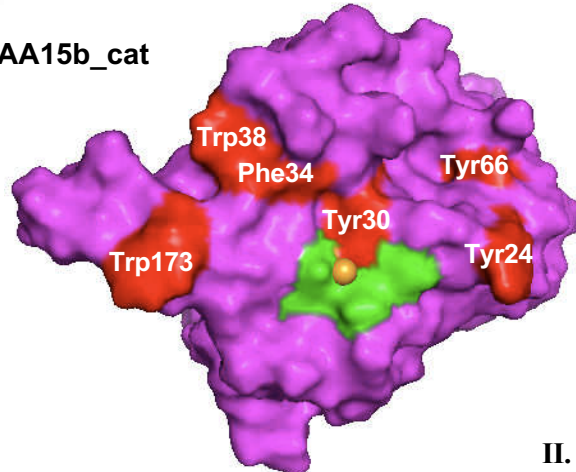
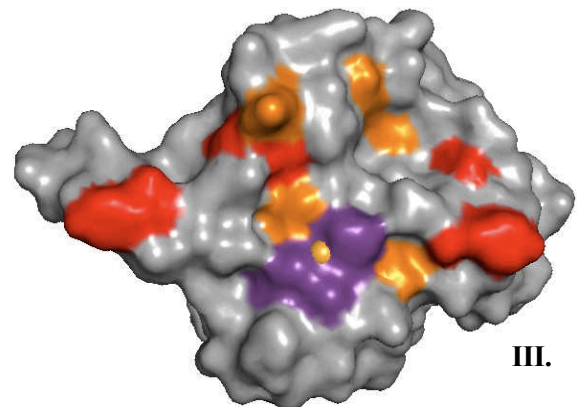
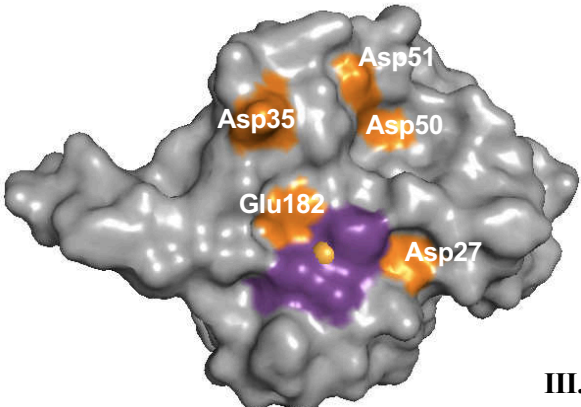
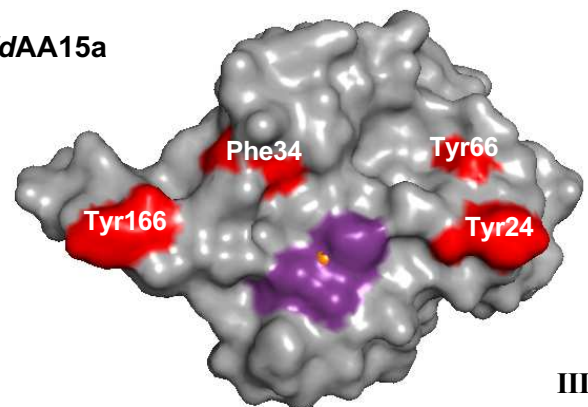
*CgAA15b_cat**TdAA15a*

Figure S4

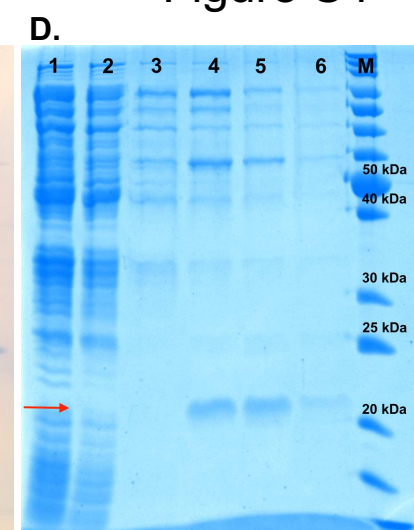
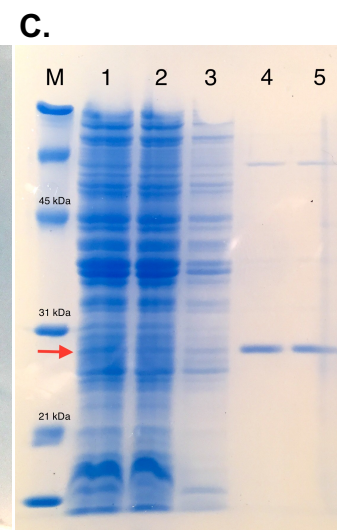
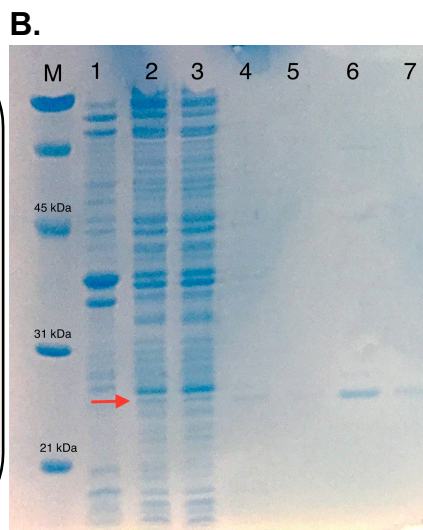
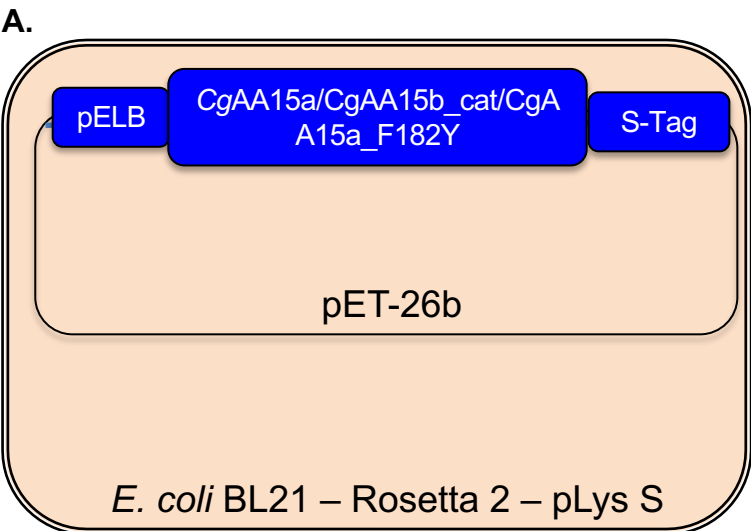


Figure 3

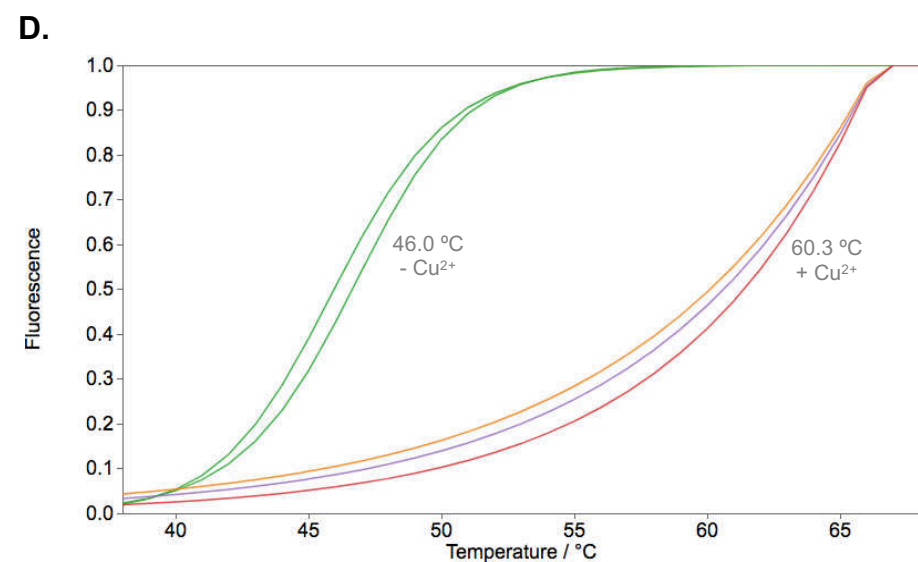
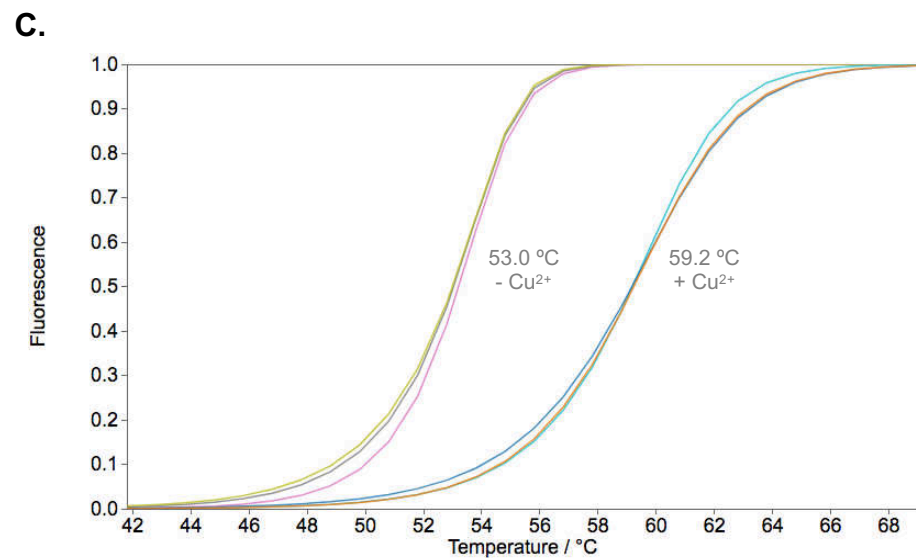
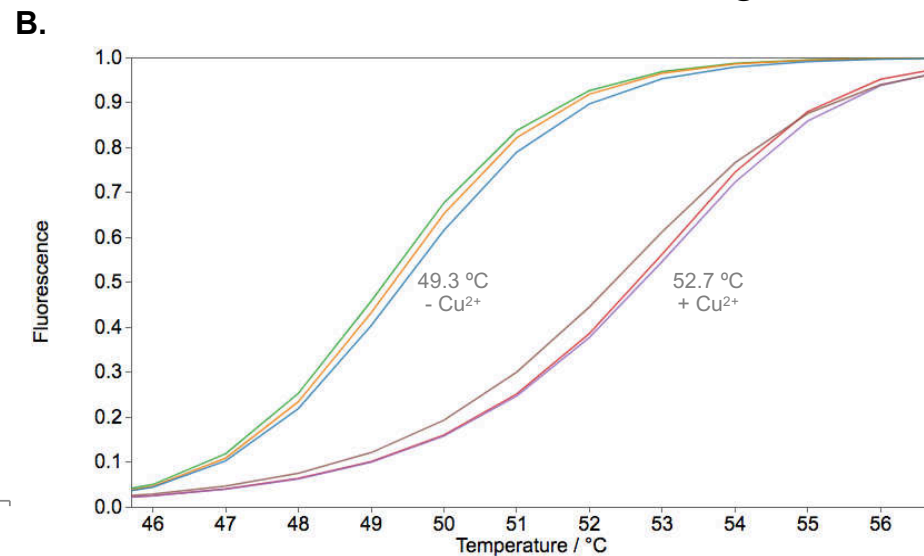
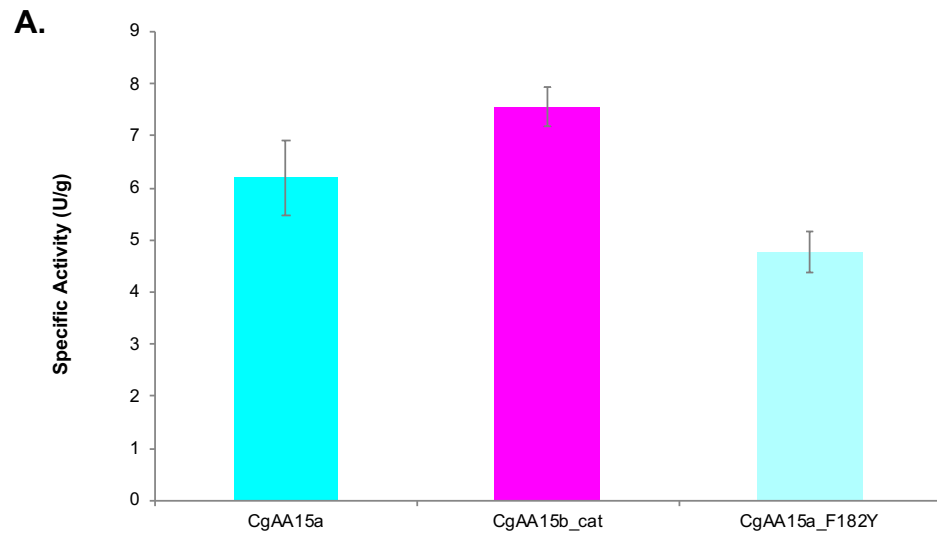


Figure 4

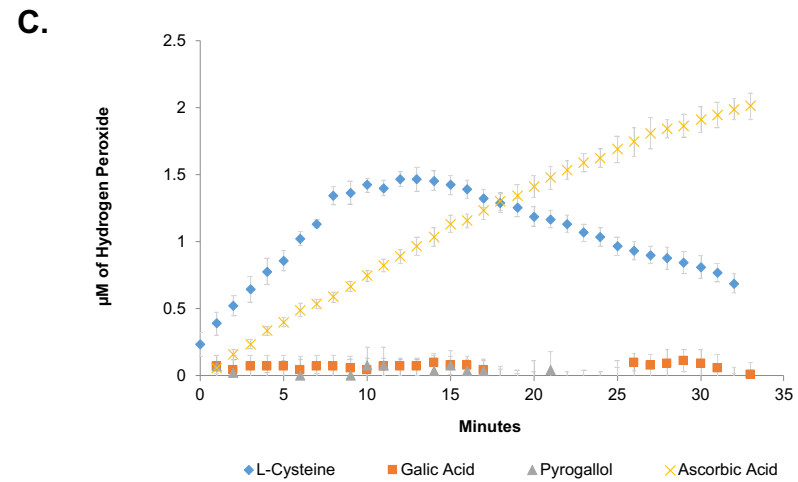
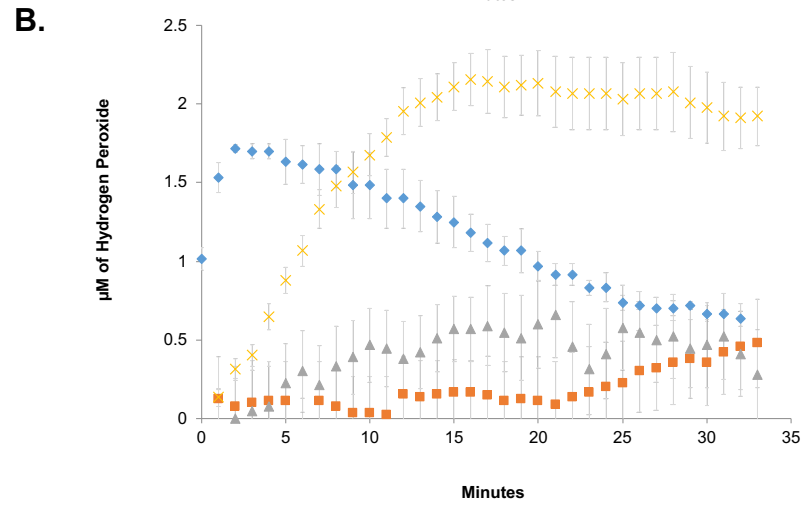
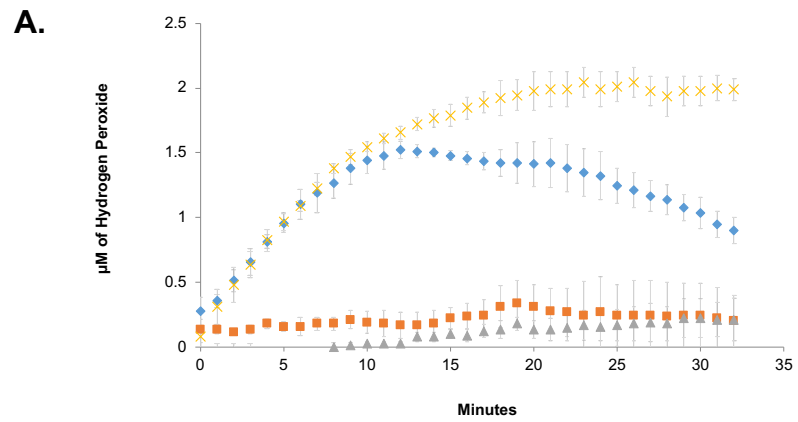
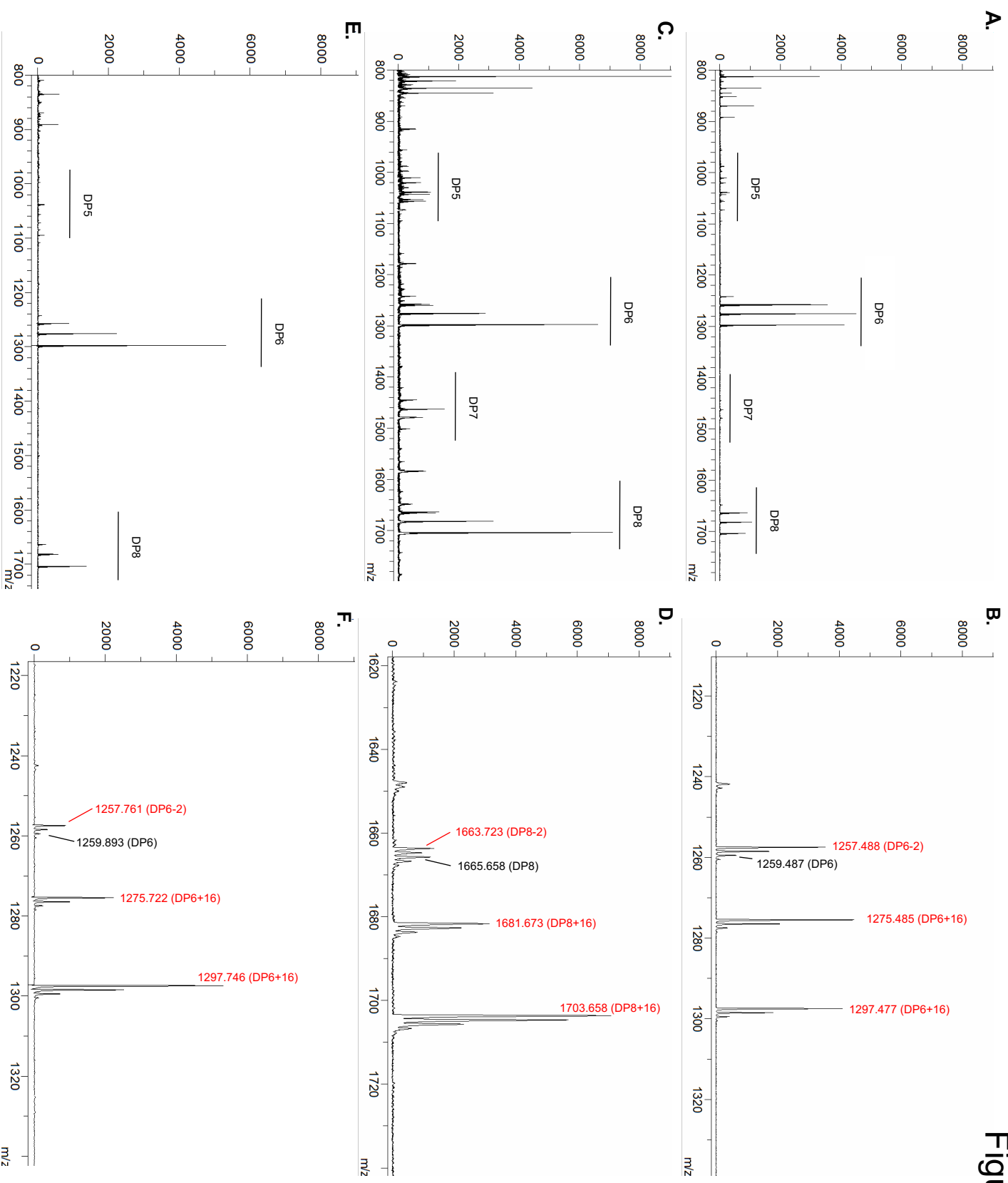


Figure 5



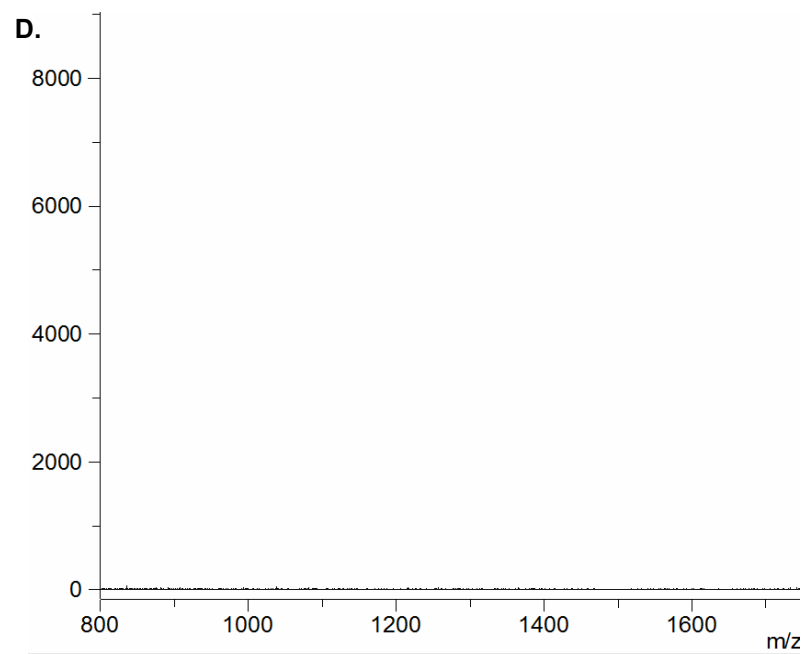
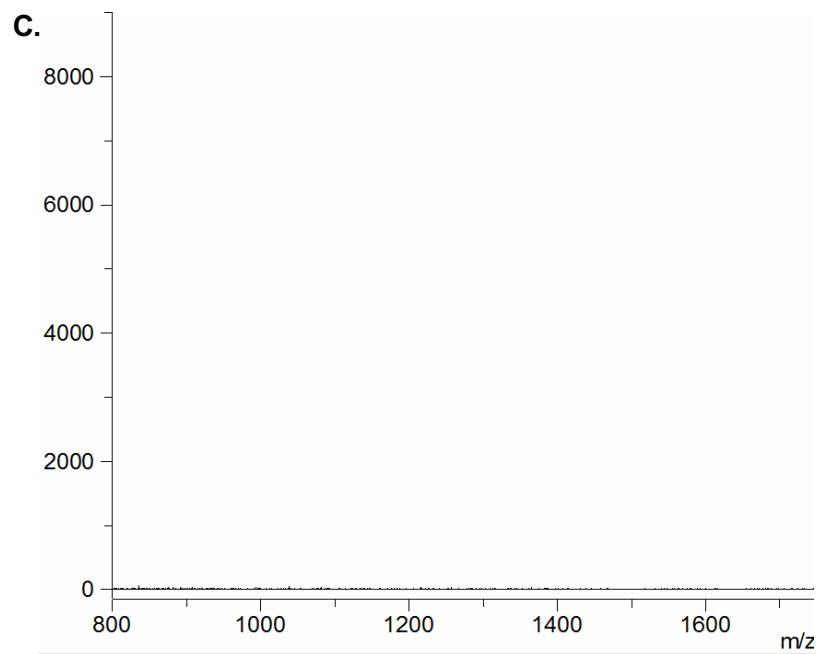
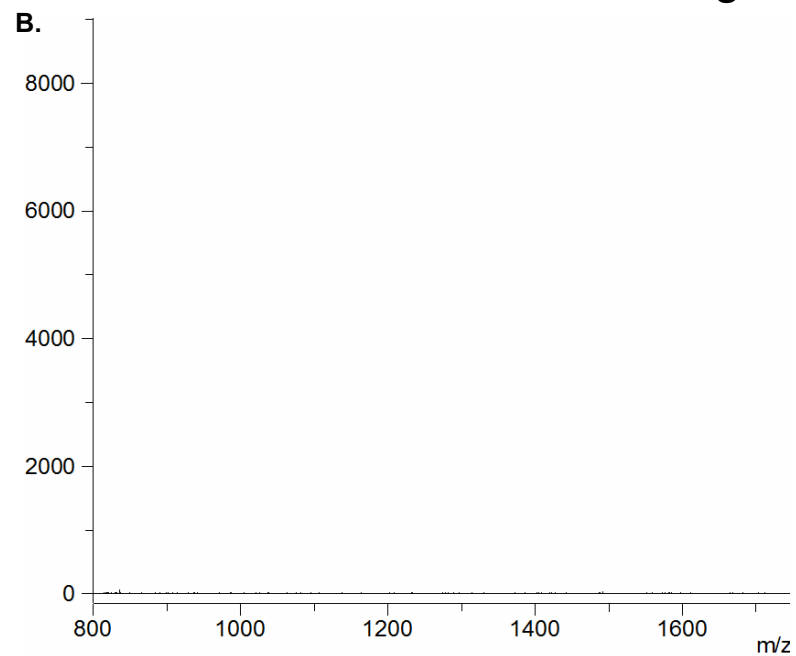
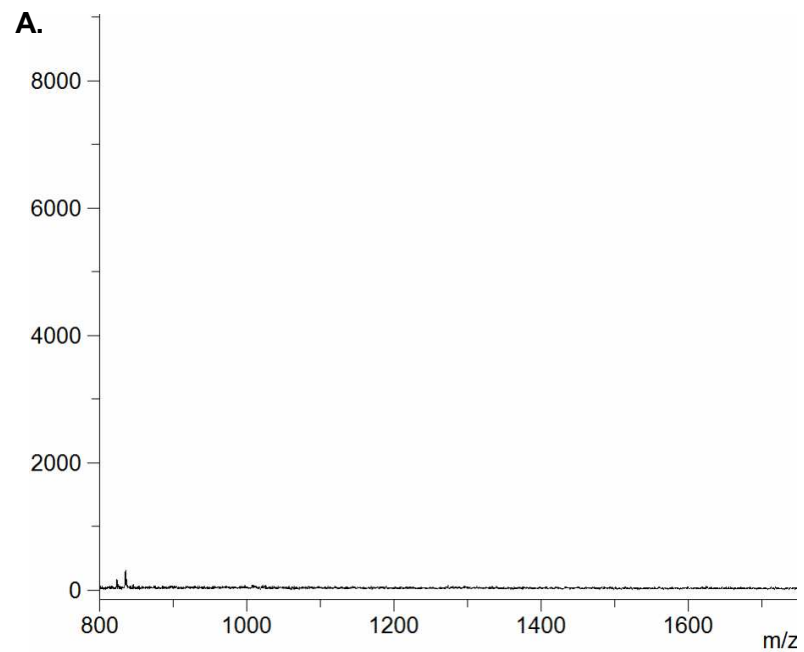
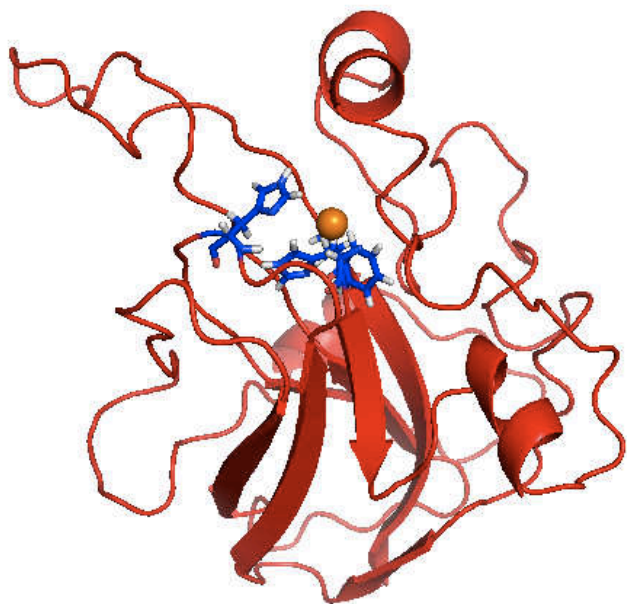


Figure S6

A.



B.

