



Deposited via The University of Sheffield.

White Rose Research Online URL for this paper:

<https://eprints.whiterose.ac.uk/id/eprint/185447/>

Version: Supplemental Material

---

**Article:**

Craven, B., Lester, W.A., Boyce, S. et al. (2022) Natural history of PF4 antibodies in vaccine induced immune thrombocytopenia and thrombosis. *Blood*, 139 (16). pp. 2553-2560. ISSN: 0006-4971

<https://doi.org/10.1182/blood.2021014684>

---

This research was originally published in Blood Online. Brian Craven, William A Lester, Sara Boyce, Will Thomas, Angela Kanny, Claire Davies, Sue Pavord, Joannes Hermans, Michael Makris, Emily Bart-Smith, Sarah Arnott, Beverly J Hunt, Pavel Chudakou, Anthony Calvert, Deepak Singh, Marie Scully; Natural history of PF4 antibodies in vaccine induced immune thrombocytopenia and thrombosis. *Blood* 2022; blood.2021014684. doi: <https://doi.org/10.1182/blood.2021014684>. © 2022 American Society of Hematology.

**Reuse**

Items deposited in White Rose Research Online are protected by copyright, with all rights reserved unless indicated otherwise. They may be downloaded and/or printed for private study, or other acts as permitted by national copyright laws. The publisher or other rights holders may allow further reproduction and re-use of the full text version. This is indicated by the licence information on the White Rose Research Online record for the item.

**Takedown**

If you consider content in White Rose Research Online to be in breach of UK law, please notify us by emailing [eprints@whiterose.ac.uk](mailto:eprints@whiterose.ac.uk) including the URL of the record and the reason for the withdrawal request.

## Supplementary material

### Figure legends

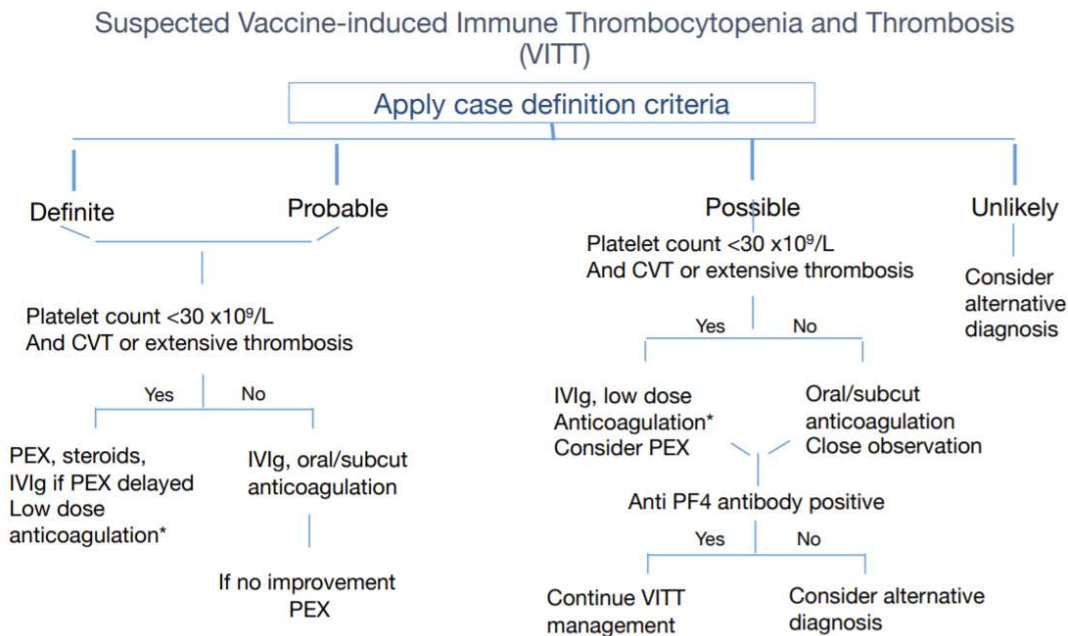
**Figure S1.** Suggested management algorithm for suspected VITT cases as proposed in Pavord S, Scully M, Hunt BJ, et al. Clinical Features of Vaccine-Induced Immune Thrombocytopenia and Thrombosis. N. Engl. J. Med. 2021; 385:1680-1689

**Figure S2.** Suggested clinical and laboratory follow up monitoring of VITT cases post discharge. Please note this represented the monitoring that was carried out on patients when little was known about the natural history of the condition and it is likely that less intensive monitoring can be implemented.

**Figure S3(a) and S3(b)** Representative graphs of individual relapse patient's PF4 OD values, platelet counts and D-dimer values over time. Figure S3(a) and 3(b) show a patient who was monitored by the Stago assay. The positivity cut-off for the Stago PF4 assay was an OD value of 0.238. Normal platelet values 150-400x10<sup>9</sup>/L. D-dimer normal values 0-500 mcg/L (FEU).

**Figure S4** Representative graph of individual relapse patient's PF4 OD values and platelet counts over time who was monitored by the Immucor assay. The positivity cut-off for the Immucor PF4 assay was an OD value of 0.4. Normal platelet values 150-400x10<sup>9</sup>/L.

Figure S1



Platelet transfusion may be required for neurosurgery, and fibrinogen supplementation if concentration  $< 1.5\text{g/L}$ . Current recommendation for anticoagulation is with non-heparin-based therapies; intravenous argatroban, subcutaneous fondaparinux or direct oral anticoagulants (DOACs).

\*Low dose anticoagulation is usually with critical illness dose argatroban, initiated at 0.25 to 0.5mg/kg/hr. CVT: Cerebral venous thrombosis. PEX: plasma exchange. PF4: platelet factor 4

Figure S2

	Month 1	Month 2	Months 2-6	Month 6+
<b>Clinical review</b>	Weekly	Fortnightly	Every 1-2 months	Every 3-6 months**
<b>Full blood count</b>	Weekly	Fortnightly	Every 1-2 months	Every 3-6 months
<b>D-dimer</b>	Weekly	Fortnightly	Every 1-2 months	Every 3-6 months
<b>Fibrinogen</b>	Weekly	Fortnightly	Clinician's discretion	Clinician's discretion
<b>PF4 ELISA</b>	Weekly*	Fortnightly	Every 1-2 months	Every 3-6 months

**\*PF4 ELISA may not be available weekly in some centres and reasonable to proceed straight to fortnightly if no other concerns on clinical or laboratory parameters**

**\*\*Likely will be able to proceed to annual follow up as more data emerges, providing evidence of late relapses does not arise**

Figure S3(a)

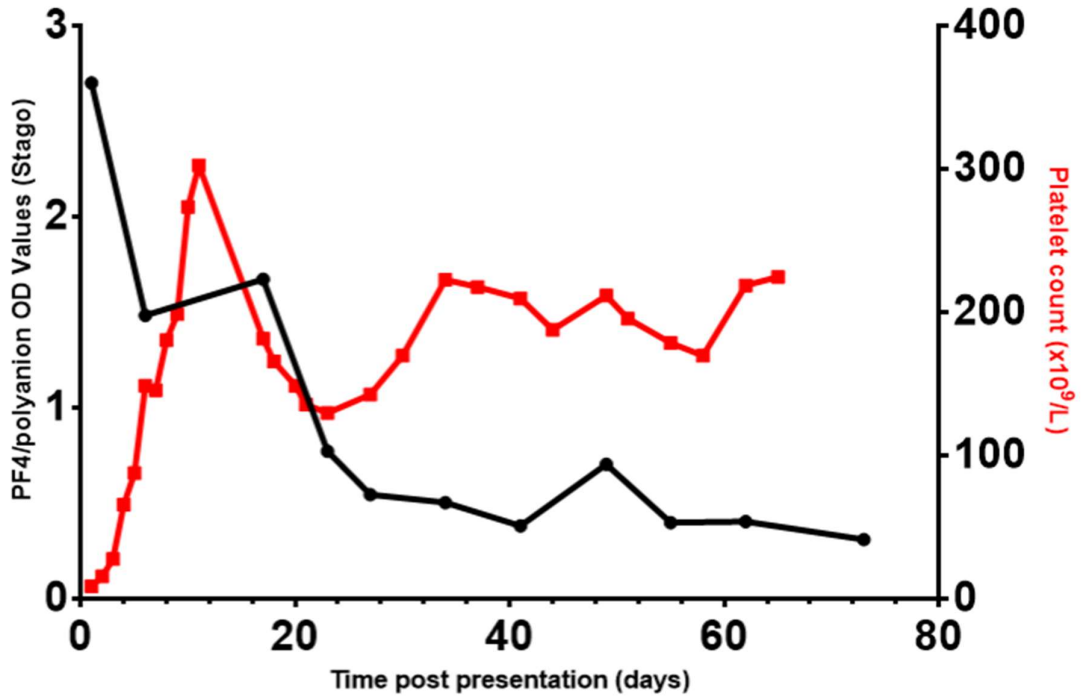


Figure S3(b)

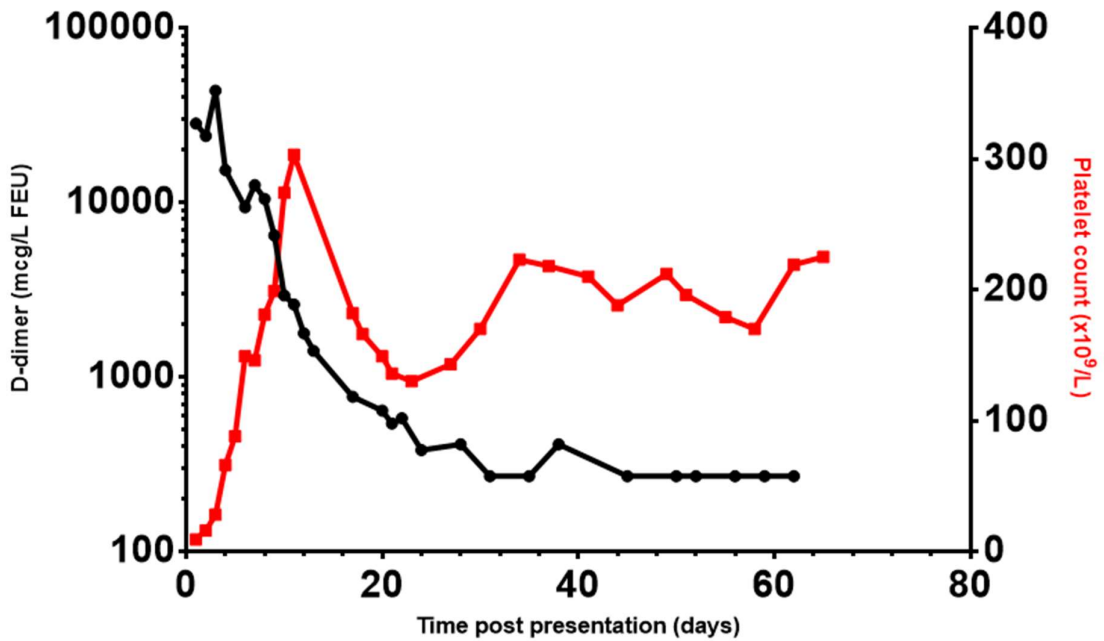


Figure S4

