



This is a repository copy of *Net zero by 2050 : investigating carbon-budget compliant retrofit measures for the English housing stock*.

White Rose Research Online URL for this paper:

<https://eprints.whiterose.ac.uk/185018/>

Version: Accepted Version

Article:

Li, X., Arbabi, H. orcid.org/0000-0001-8518-9022, Bennett, G. et al. (2 more authors) (2022) Net zero by 2050 : investigating carbon-budget compliant retrofit measures for the English housing stock. *Renewable and Sustainable Energy Reviews*, 161. 112384. ISSN 1364-0321

<https://doi.org/10.1016/j.rser.2022.112384>

© 2022 Elsevier Ltd. This is an author produced version of a paper subsequently published in *Renewable and Sustainable Energy Reviews*. Uploaded in accordance with the publisher's self-archiving policy. Article available under the terms of the CC-BY-NC-ND licence (<https://creativecommons.org/licenses/by-nc-nd/4.0/>).

Reuse

This article is distributed under the terms of the Creative Commons Attribution-NonCommercial-NoDerivs (CC BY-NC-ND) licence. This licence only allows you to download this work and share it with others as long as you credit the authors, but you can't change the article in any way or use it commercially. More information and the full terms of the licence here: <https://creativecommons.org/licenses/>

Takedown

If you consider content in White Rose Research Online to be in breach of UK law, please notify us by emailing eprints@whiterose.ac.uk including the URL of the record and the reason for the withdrawal request.



eprints@whiterose.ac.uk
<https://eprints.whiterose.ac.uk/>



This is a repository copy of *Net zero by 2050: Investigating carbon-budget compliant retrofit measures for the English housing stock*.

White Rose Research Online URL for this paper:
<https://eprints.whiterose.ac.uk/185018/>

Version: Accepted Version

Article:

Li, X, Arbabi, H, Bennett, G et al. (2 more authors) (2022) Net zero by 2050: Investigating carbon-budget compliant retrofit measures for the English housing stock. *Renewable and Sustainable Energy Reviews*, 161. 112384. ISSN 1364-0321

<https://doi.org/10.1016/j.rser.2022.112384>

Reuse

Items deposited in White Rose Research Online are protected by copyright, with all rights reserved unless indicated otherwise. They may be downloaded and/or printed for private study, or other acts as permitted by national copyright laws. The publisher or other rights holders may allow further reproduction and re-use of the full text version. This is indicated by the licence information on the White Rose Research Online record for the item.

Takedown

If you consider content in White Rose Research Online to be in breach of UK law, please notify us by emailing eprints@whiterose.ac.uk including the URL of the record and the reason for the withdrawal request.



eprints@whiterose.ac.uk
<https://eprints.whiterose.ac.uk/>

1 **Net Zero by 2050: investigating carbon-budget compliant retrofit measures for the English housing**
2 **stock**

3 Li, X.^{1*}, Arbabi, H.¹, Bennett, G.², Oreszczyn, T.², and Densley Tingley, D.¹

4 ¹ =Department of Civil & Structural Engineering, University of Sheffield, Sir Frederick Mapping Building,
5 Sheffield S1 3JD, United Kingdom

6 ² =UCL Energy Institute, University College London, 14 Upper Woburn Place, WC1H 0NN, United Kingdom

7 * = Corresponding Author, xinyi.li@sheffield.ac.uk

8

9 **Abstract**

10 The UK has enacted one of the most ambitious carbon reduction targets striving for net zero emissions by 2050.
11 A major challenge to achieving this is decarbonizing heating demand with almost 25m homes in need of retrofit.
12 This paper explores a range of retrofit interventions to the English residential stock. These are deployed
13 immediately in 2021 to investigate the maximum carbon reduction that could be achieved. The impact of these
14 interventions on embodied and operational carbon emissions is estimated from 2021-2050. The resulting
15 emissions are compared to estimated national carbon budgets, in order to ascertain, if, and with what
16 combination of retrofit measures, the English housing stock can stay within carbon budgets. The results show
17 that mass deployment of air source or ground source heat pumps can reliably achieve combined embodied and
18 operational emissions within national carbon budgets by 2050. The careful selection of insulation materials is
19 key in bringing down the embodied emissions, particularly to meet stricter carbon budgets. The identified scale
20 and pace of deployment thus needed to stay within carbon budgets is likely to pose enormous practical
21 challenges. To overcome these challenges, we argue for (a) urgently increasing both heat pump deployment,
22 and renewable generation targets beyond existing pledges, (b) increasing social awareness of residential retrofit
23 benefits, and (c) providing more attractive financing options to incentivise and facilitate retrofit uptake.

24

25 **Highlights**

- 26 • Exploration of retrofit measures to meet carbon budget for English housing stock
- 27 • Whole life carbon analysis including both embodied and operational carbon emissions
- 28 • Carbon payback for all measures except PV estimated to be within 5 years
- 29 • CCC Carbon budget only met with rapid deployment of air/ground source heat pumps
- 30 • Meeting Tyndall carbon budget also requires wall insulation using low carbon materials

31

32 **Keywords:** Retrofit scenarios, Decarbonisation pathways, Embodied carbon, Operational carbon, Whole life
33 carbon, Residential stock, Carbon budget

34

35 **Word count:** 6830

36

List of abbreviations

ASHP	Air Source Heat Pump
AWI	All Walls Insulated
BL	Baseline
CCC	Committee on Climate Change
CCS	Carbon Capture and Storage
CI	Cavity Insulation
COP	Coefficient Of Performance
DG	Double Glazing
EHS	English Housing Survey
EI	External Insulation
EPC	Energy Performance Certificate
GHG	Greenhouse Gas
GSHP	Ground Source Heat Pump
GWP	Global Warming Potential
HBHP	Hybrid Heat Pump
II	Internal Insulation
NHM	National Household Model
PV	Photovoltaic
TG	Triple Glazing

1

2 **1 Introduction**

3 To keep the global temperature rise to within 1.5°C, in line with the Paris climate accord, drastic decarbonisation
4 measures are needed [1]. In 2019, the UK became one of the first advanced economies to pass legislation to
5 target net zero greenhouse gas emissions by 2050 [2]. Prior to the disruption caused by the COVID-19 pandemic,
6 the UK was projected to miss its previously set 2030s fourth and fifth carbon budgets even though it
7 overachieved the targets set for 2020 [3]. As the world recovers from the pandemic, global carbon emissions
8 have rebounded to near pre-pandemic levels [4]. Therefore, efforts are still urgently needed to keep UK carbon
9 emissions within the pre-set carbon budgets.

10

11 **1.1 UK residential emissions and retrofit**

12 Direct and indirect greenhouse gas (GHG) emissions from the residential building sector accounted for 16% of
13 the UK's total emissions in 2019 [5]. A recent report by the Committee on Climate Change points out that
14 achieving the net zero emissions goal is all but impossible without decarbonizing England's existing residential
15 stock of almost 25m homes [6]. Between 1990 and 2004 the residential stock saw next to no reduction in direct
16 carbon dioxide emissions, and between 2004 and 2019 it saw a 25% reduction [6]. Decarbonisation of the

1 English stock can be achieved by a range of measures, applied both on the supply side and demand side.
2 Upgrades to deliver a net zero carbon energy supply system include switching to decarbonised electricity, e.g.
3 on and offshore wind, district heating with biomass, and repurposing the existing gas network for 100%
4 hydrogen. These, however, often need to be designed in conjunction with building level retrofit measures. For
5 example, an increased renewable electricity grid mix/capacity still requires building retrofit to electrify heating,
6 i.e. through installation of heat pumps. Whereas hydrogen, at least in the UK, is unlikely to be reliably available
7 in the network before 2030[7]. This would leave nearly a decade of unmitigated residential emissions. Building
8 level retrofit measures on the demand side, include improving the efficiency of the building fabric, heating
9 systems, lighting and appliances. In England, more than half the stock has an energy efficiency band of D or
10 worse (rated from A-G, with A being the top rating) with a large portion of the housing stock built before 1980
11 [8].The significant size and age of the stock means that, in addition to its importance to the decarbonisation
12 targets, building retrofit can also provide a significant opportunity to boost economic activity by increasing
13 employment and wages [9]. Although there are many options for achieving net zero, practically delivering this
14 transition will pose several challenges, including identifying the stock most in need of intervention, the
15 deployment of the right mix of intervention measures that are practical, and most cost effective, for both
16 homeowners and the wider energy system.

17 The 2020-released UK Energy Performance Certificate (EPC) action plan aims to make energy performance
18 data more accurate, reliable, and accessible in order to better plan for the net zero transition [10]. By November
19 2021, 11 of the 35 actions were already completed, and the remaining had commenced [11]. Furthermore, the
20 UK Government’s Green Industrial Revolution aims to reduce carbon emissions by 71MtCO_{2e} between 2023-
21 2032 by installing 600 thousand heat pumps annually by 2028, improving the energy efficiency of 2.8m houses
22 by 2030, and ensuring ‘zero carbon ready’ new build construction [12]. Concurrently, the government has made
23 a pledge to invest in offshore wind capacity such that every home in the country can be wind powered by 2030
24 [13].

25

26 **1.2 Whole-life emissions and emissions budget**

27 Many aspects of residential building retrofit have already been explored within the literature, from financing
28 and governance requirements to the development of various scenario modelling tools to support decision making
29 in the area. Ahlrichs et al. [14] have studied retrofit investment and financial barriers highlighting a need for
30 increased carbon taxes to influence retrofit-related investment decisions. Meanwhile, a recent study of British
31 landlords’ behaviour relating to retrofit activity points at diversifying information channels targeted at landlords.
32 This is seen as a key factor in ensuring policy and financial incentives are adopted despite differing financial
33 means and attitudes among landlords [15]. Decision support studies have also looked at susceptibility of various
34 geodemographic groups of homeowners to invest in retrofit measures [16] and the potential unintended
35 consequences of thermal retrofit resulting in a consumption rebound [17]. Studies in a UK context, have focused
36 particularly on identifying retrofit actions required to meet decarbonisation targets [18, 19] or the potential role

1 for various public and private stakeholders to enable these [20, 21]. ~~However, Despite these,~~ currently the
2 majority of the UK residential stock retrofit studies focus on operational impacts, largely excluding embodied
3 impacts [22]. There is little research investigating the whole life carbon performance of building stock retrofit,
4 which includes accounting for the embodied carbon emissions from the retrofit measures themselves [22], and
5 it is this research gap that this study is aiming to fill. Moreover, with the current UK housing retrofit rates too
6 low to achieve net zero by 2050 [23], a novel research question arises: what retrofit measures need to be
7 deployed to keep the English residential stock within carbon budgets?

8 In summary existing knowledge gaps include:

- 9 • understanding of the embodied impacts of retrofit,
- 10 • whole-life carbon performance of various retrofit measures globally, and
- 11 • compatibility of retrofit measures with Paris-compliant national and sectoral emissions budgets.

12 To answer these questions, we scale down the total UK carbon budget into a carbon budget for English
13 residential buildings. The whole life carbon emissions of the English housing stock, including the embodied
14 carbon emissions from retrofit measures and the buildings' operational carbon emissions post-retrofit operation,
15 are then estimated for 2021-2050. Making an assumption that wide-spread residential retrofit is essential, we
16 identify the retrofit measure combinations that meet residential carbon budgets, estimating these budgets using
17 two different interpretations of global to national budget allocations. The results of this study provide insights
18 for decision and policy makers working on retrofit or decarbonisation in the UK, as well as providing broader
19 insights into the potential solutions that drastically decarbonise similarly aged housing stock in similar climates.

21 **2 Methodology**

22 This study starts by estimating carbon budgets for the English residential sector from 2021-2050. It then models
23 deployment of a series of retrofit measures across the English housing stock. The whole life carbon emissions
24 of English residential stock retrofit, including both operational emissions and embodied emissions, are
25 estimated. Finally, the combined emissions over the period 2021-2050 are compared against the developed
26 budget to determine the ability of retrofit scenarios to meet the budget or the additional renewables required to
27 accelerate grid decarbonisation in order to meet the pre-set carbon budget.

28 We make a simplifying assumption about the deployment of the retrofit interventions, such that all scenarios
29 considered are immediately deployed at the start of 2021. This represents the maximum energy saving potential
30 of all studied retrofit scenarios. In the real world, the deployment of retrofit interventions takes time and results
31 in lower cumulative energy savings.

33 **2.1 Long-term targets and emissions budget**

34 Based on a UK carbon budget developed by the Committee on Climate Change (CCC) [24] and one by the
35 Tyndall Centre [25], we develop two budgets specifically for the English residential building stock, b_p , for the
36 period p following

$$b_p = B_p * F_{be} * F_d * F_e \quad (1)$$

where B_p is the CCC or Tyndall-developed carbon budget for UK for the period p ; F_{be} is the fraction of carbon emissions from UK built environment to UK total carbon emissions, which was around 40% in 2019, including embodied carbon emissions from new construction, operational carbon emissions from existing built assets and direct emissions from transportation [26]; F_d is the fraction of UK residential carbon emissions (including both residential embodied and operational carbon emissions) to the UK built environment carbon emissions (considering embodied and operational carbon emissions of three sectors, namely residential buildings, non-residential buildings and infrastructure), which was 61% in 2010 [27]; F_e is the fraction of England's residential carbon emissions to the UK residential carbon emissions which is calculated based on the prediction of Tyndall carbon budget between that for England and the UK (as shown in 3).

The Tyndall carbon budget is more stringent than the CCC carbon budget, as the Tyndall interpretation of the Paris agreement is that developed nations should be apportioned a smaller proportion of the global carbon budget, with developing nations given a larger share to facilitate their development. In addition, global elements of the budget are also allocated to areas such as land use change, see Anderson et al. [28] and Kuriakose et al. [29] for further details. The CCC carbon budgets cover 5-year periods and are set every five years, with the sixth CCC carbon budget (2033-2037) published in December 2020. The Tyndall carbon budgets also cover five-year periods from 2018 to 2047 with additional budgets covering 2048 to 2100. The total budget from 2021 to 2050 is then disaggregated assuming a linear proportionality across the years during the periods 2018-2022 and 2048-2100 according to equation 2.

$$b_{2021-2050} = \frac{2}{5}b_{2018-2022} + b_{2023-2027} + b_{2028-2032} + b_{2033-2037} + b_{2038-2042} + b_{2043-2047} + \frac{3}{53}b_{2048-2100} \quad (2)$$

Table 1 shows the extracted carbon budgets from CCC and Tyndall for the UK and the scaled budget for the English residential stock. It is worth mentioning that the current indicative path to the UK's net zero target shows the annual GHG emissions will not reach this target before 2050 [30], and the CCC carbon budget for 2033 to 2037 has only just been published [31]. Therefore, our estimated CCC England carbon budget for the period 2021-2050 is likely to be an underestimation. Furthermore, the Tyndall carbon budgets are for carbon dioxide emissions only instead of carbon equivalents. To simplify the comparison of carbon budgets between countries with residential stock of different size, the England residential carbon intensity restriction is also calculated (shown in Table 1), as the England residential carbon budget divided by total floor area nationally, which is around 2.44E+09 m² according to EHS 2012 [32].

With this study focusing on how to successfully mitigate English residential stock's carbon emissions, whilst keeping to the 2050 carbon budget, we only consider the total carbon budget between 2021-2050 as an aggregated benchmark, instead of trying to meet periodic intermediate 5-year targets. The study takes a consumption-based approach [33] to carbon accounting, including the embodied emissions from all materials whether they are produced in the UK or internationally.

1

2 *Table 1. Carbon budgets for the UK and England residential sector – note that only [Committee on Climate Change \(CCC\)](#) values are in carbon equivalent*

Period	CCC UK	Tyndall UK	Tyndall	F_e	England residential		England residential carbon	
	carbon	carbon	England	the fraction of England's	carbon budget		intensity restriction	
	budget	budget	carbon	residential carbon	CCC	Tyndall	CCC	Tyndall
	(MtCO _{2e})	(MtCO ₂)	budget	emissions to the UK	(MtCO _{2e})	(MtCO ₂)	(MtCO _{2e} /m ²)	(MtCO ₂ /m ²)
			(MtCO ₂)	residential carbon				
				emissions				
2018-2022	2544	1456.9	1175.6	80.7%	500.9	286.8	205.60	145.92
2023-2027	1950	741.0	599.6	80.9%	385.0	146.3	158.04	74.22
2028-2032	1725	366.3	297.3	81.2%	341.6	72.5	140.23	36.69
2033-2037	965	181.3	147.7	81.5%	191.8	36.0	78.74	18.16
2038-2042	/	89.9	73.5	81.8%	/	17.9	/	9.00
2043-2047	/	44.9	36.9	82.2%	/	9.0	/	4.50
2048-2100	/	44.4	36.8	82.9%	/	9.0	/	4.45
2021-2050	4692.6	2008.7	1627.3		1118.8	397.1	459.2	201.2

3

1 **2.2 Retrofit scenarios**

2 We consider four main types of retrofit measures in this study: wall insulation, glazing replacement, PV modules
 3 and heating system upgrades. They are applied individually and combined. In the combined retrofit measures,
 4 only double glazing is considered due to its higher financial effectiveness in retrofitting UK residential
 5 dwellings when compared with triple glazing [34]. The retrofit scenarios considered in this study are detailed
 6 in *Table 2*.

7 *Table 2. Retrofit scenarios and the description of the interventions modelled for the stock.*

Retrofit Scenario	Description
BL	Baseline (BL), no retrofit, the stock stays as it is currently without upgrade.
PV	Add photovoltaic (PV) modules on all buildings with available roof space for PV. The PV modules are assumed to be installed on 30% of all available building roof space, with an efficiency of 20% for electricity generation. All PV has an encumbered view of the sky according to the orientation of the building.
CI	Cavity insulation (CI) applied to all buildings with cavity walls where no previous cavity wall insulation is installed to achieve a post retrofit U-value of 0.1 W/(m ² ·K) .
EI	External insulation (EI) applied to all buildings with solid walls where no previous external wall insulation is installed, to achieve a post retrofit U-value of 0.1 W/(m ² ·K) .
II	Internal insulation (II) applied to all buildings of any wall type where no previous internal wall insulation was installed, to achieve a post retrofit U-value of 0.1 W/(m ² ·K).
DG	Replace windows in homes where the glazing U-value is greater than 3 W/(m ² ·K) to double glazing (DG) with U-value of 1.6 W/(m ² ·K).
TG	Replace windows in homes where the glazing U-value is greater than 2 W/(m ² ·K) to triple glazing (TG) with U-value of 0.8 W/(m ² ·K) .
GSHP	Switch to ground source heat pump (GSHP) with seasonal Coefficient of performance (COP) of 3 if outdoor space is available and the current heating system efficiency is less than 100% or uses community heating.
ASHP	Switch to air source heat pump (ASHP) with seasonal COP of 2.5 ¹ if the current heating system efficiency is less than 100% or uses community heating.
HBHP	Switch to hybrid heat pump (HBHP) with 50:50 split of heating supply between ASHP (COP2.5) and condensing gas boiler, where the current heating system efficiency is less than 100% and the house is connected to the gas network.
AWI	All Walls Insulated (AWI). Apply CI, EI, and II sequentially to all the stock with the same rules as above. No individual home receives more than a single insulation measure to achieve a post retrofit U-value of 0.1 W/(m ² ·K) for the treated walls. Many homes which were not classified as simple CI or EI suitable homes and have mixed wall and layout types will result in non-uniform application of insulation measures resulting in a higher than 0.1 W/(m ² ·K) for the dwelling.
AWI+DG+ASHP	Combining the all wall insulation, glazing and heating system switch to air source heat pump
AWI+ASHP	or hybrid heat pump as per the listed combinations, the measures are applied to the stock as
AWI+DG	per their individual rules.
DG+ASHP	
AWI+HBHP	
DG+HBHP	
AWI+DG+HBHP	

¹ In practice heat pumps vary significantly in operational performance (seasonal COP of 1.5 to 4.5 for ASHPs), due to installation quality, product performance and maintenance [35] Lowe R, Summerfield A, Oikonomou E, Love J, Biddulph P, Gleeson C, et al. Final report on analysis of heat pump data from the renewable heat premium payment (RHPP) scheme https://assets.publishing.service.gov.uk/government/uploads/system/uploads/attachment_data/file/606818/DECC_RHPP_161214_Final_Report_v1-13.pdf; 2017, [35] *ibid.*. This variation in COPs is much greater than the variance in boiler efficiency, resulting in a greater variance in energy demand.

1 The post retrofit U-value for wall insulation is set to 0.1 W/(m²·K) as the most energy efficient retrofit solution.
2 It exceeds the requirements of the current maximum requirement of UK building regulations, part L1B of 0.3
3 W/(m²·K) [36] and EnerPHit building retrofit standard, which ranges from 0.12-0.30 W/(m²·K) in the UK [37],
4 but still proved to be feasible for a 1960s housing estate with solid walls [38]. The various measures under
5 consideration are applied to the building stock in such a way that the definition of the measure and the homes
6 to which it could be applied are explicitly programmed. For example, cavity wall insulation is defined as
7 providing a U-value of 0.1 W/(m²·K) after installation and is only applied to homes with cavity walls currently
8 without cavity insulation. The National Household Model then searches the stock for suitable homes and applies
9 the measure as defined. *Table 3* provides information on the aggregate scope of each scenario when applied to
10 all eligible stock across the nearly 25m units available to retrofit.

11

1 *Table 3. Retrofit measures deployment scope across the eligible English housing stock.*

Retrofit Scenario	PV module area (m ²)	Wall insulation total applied area (m ²)			Glazing replacement total applied area (m ²)		Annual generated thermal energy for domestic space heating from the retrofitted heating system (kWh _t)		
		Cavity	External	Internal	Triple glazing	Double glazing	GSHP	ASHP	Boiler
PV	3.89E+08								
CI		9.52E+08							
EI			6.36E+08						
II				1.65E+09					
TG					4.06E+08				
DG						1.12E+08			
GSHP							1.90E+11		
ASHP								2.07E+11	
HBHP								9.25E+10	9.25E+10
AWI		9.52E+08	6.36E+08	5.90E+07					
AWI+DG+ASHP		9.52E+08	6.36E+08	5.90E+07		1.12E+08		1.37E+11	
AWI+ASHP		9.52E+08	6.36E+08	5.90E+07				1.42E+11	
AWI+DG		9.52E+08	6.36E+08	5.90E+07		1.12E+08			
DG+ASHP						1.12E+08		2.03E+11	
AWI+HBHP		9.52E+08	6.36E+08	5.90E+07				5.46E+09	5.46E+09
DG+HBHP						1.12E+08		9.06E+10	9.06E+10
AWI+DG+HBHP		9.52E+08	6.36E+08	5.90E+07		1.12E+08		4.39E+09	4.39E+09

2

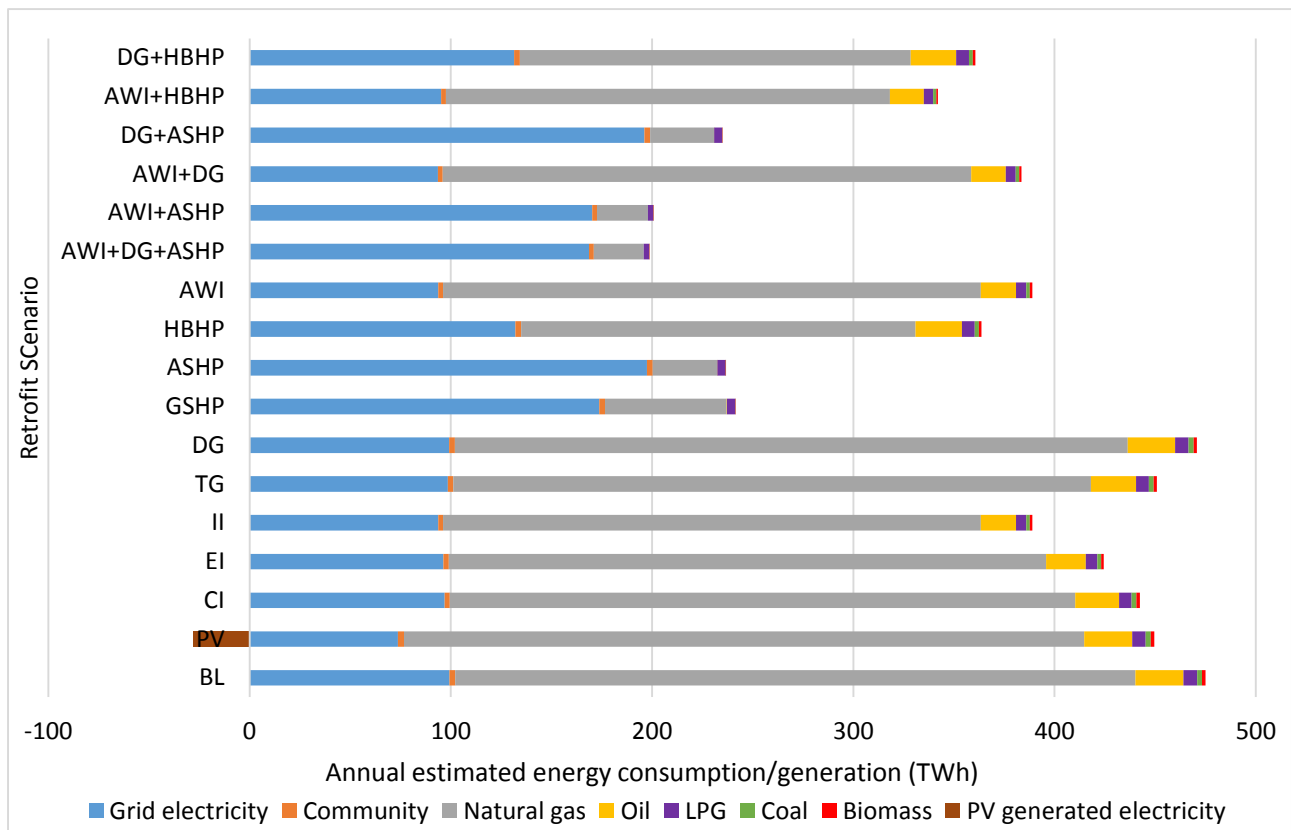
1 **2.3 Modelling operational carbon**

2 *2.3.1 National Household Model*

3 The National Household Model (NHM) is an open-source modelling tool developed for the UK Department
4 of Business Energy and Industrial Strategy [39]. The model (v 7.2.2 used in this study) brings together the
5 standard monthly building energy assessment calculation methods with the representative UK residential
6 building stock. The energy assessment models available are the Standard Assessment Procedure (SAP) and
7 Building Research Establishment Domestic Energy Model (BREDEM), which are closely related in terms of
8 being monthly energy balance methods and SAP having been derived from BREDEM to fulfil the role of the
9 National Calculation Model for the UK to conform to the EU Energy Performance of Buildings Directive [40,
10 41]. For the purposes of calculating operational carbon, here, we use the BREDEM 2012 energy calculator.

11 The NHM requires building stock data and has been designed to take English Housing Survey (EHS) data as
12 a primary building stock. For the purposes of this analysis, we use data from the EHS 2012 [32]. Although the
13 NHM has the capability to perform scenario modelling over time, with programmable interventions and
14 changes to the building stock, the operational carbon calculations in this analysis are done over one calendar
15 year with all interventions implemented on the first day of the model run. This is because we are primarily
16 interested in investigating the combined embodied and operational carbon implications of retrofit measures
17 and a deploy-all-first approach represents the most favourable approach in minimizing accumulating
18 operational emissions in the absence of practical constraints. At-the-meter energy consumption of the stock as
19 a whole is modelled before and after intervention measures in order to assess the impact of installing each
20 intervention. The detailed NHM energy consumption results of different scenarios and a brief discussion of
21 the results can be found in the SI. The energy demand by fuel from all energy vectors was also collected to
22 gain an accurate picture of the operational carbon resulting from the intervention measure.

23 The annual energy consumption of the whole English housing stock after undertaking different retrofit
24 measures is presented in Figure 1. The detailed data can be found in the SI.



1
2 *Figure 1. The energy consumption of the English house stock under different retrofit scenarios*

3
4 *2.3.2 Grid emissions and decarbonisation scenarios*

5 To arrive at emissions related to residential consumption we need to assume a carbon intensity for the national
6 grid in the period 2021-2050. From 2008 to 2019, the carbon emissions from the power sector fell by 67% with
7 the decarbonisation of the power sector dominating the UK carbon emissions fall for the last decade [30].
8 However, the power sector needs to be further decarbonised to achieve the net zero carbon emissions target. In
9 this study, the effect of grid decarbonisation on the carbon emission factor of electricity is explored by initially
10 considering six future grid decarbonisation scenarios based on the analysis of Committee on Climate Change
11 and that of the national grid:

12 S1: In 2019, the electricity carbon emissions for the UK were 200 gCO₂/kWh [42]. According to the analysis
13 and targets set by the CCC [3], the grid carbon emissions are assumed as 50gCO₂ /kWh in 2030 and
14 10gCO₂ /kWh in 2050. Interpolation is used to calculate the grid carbon emissions of other years in-between,
15 with a constant decarbonisation pace assumed between 2019-2030 and 2030-2050.

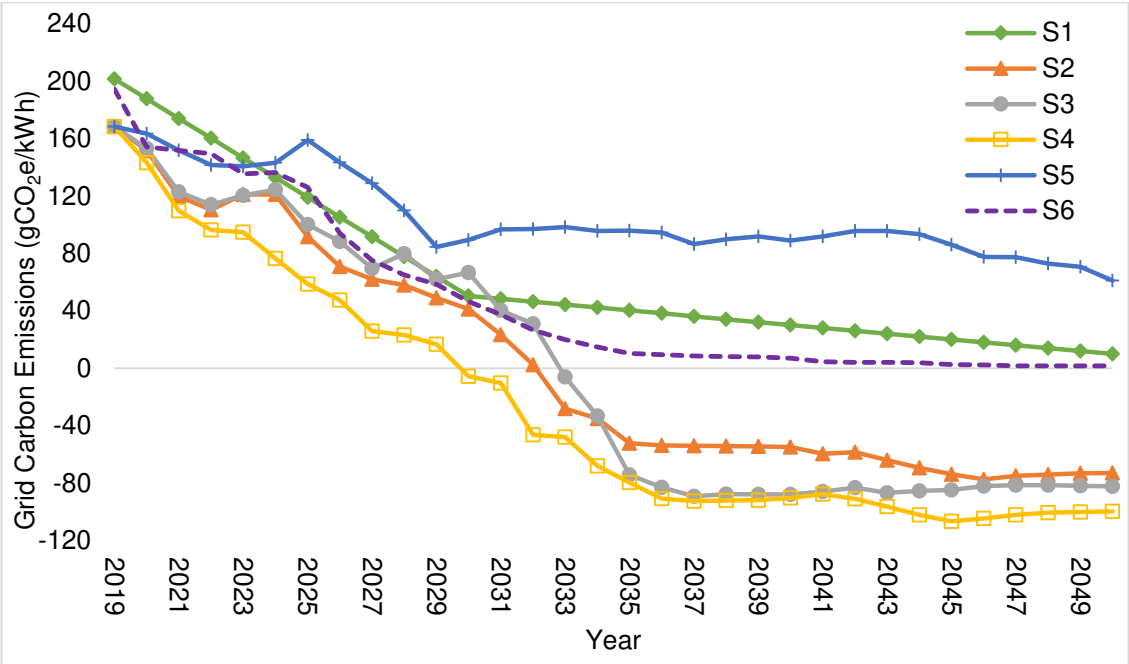
16 S2 to S5: The national grid [43] has developed a set of four future energy scenarios with different CO₂ intensities
17 of electricity generation, namely consumer transformation (S2), system transformation (S3), leading the way
18 (S4) and steady progression (S5). The three scenarios, S2-S4, all rely on bioenergy with carbon capture and
19 storage (CCS) and achieve negative emissions prior to 2050.

1 S6: In the Committee on Climate Change’s sixth carbon budget [31], a balanced net zero pathway for electricity
 2 generation was developed, which very largely decarbonises electricity generation by 2030, and decarbonises it
 3 completely by 2035. Actions thereafter focus on meeting rising demand with low-carbon generation.
 4 These grid carbon emissions scenarios only account for direct CO₂ emissions. In this paper, we make
 5 adjustments to include all GHG emission in the grid emissions. By assuming the ratio between grid emitted
 6 GHG and CO₂ remains constant at its 2017 value of 1.008 [44], the emission factor of electricity accounting for
 7 all GHG is calculated following:

$$OC_{e,y} = G_{CO_2,y} * 1.008 \quad (3)$$

9 $OC_{e,y}$ is the carbon emission factor of electricity in year y in gCO₂e/kWh; $G_{CO_2,y}$ is the grid carbon emissions
 10 considering only CO₂ in year y measured in gCO₂/KWh. The grid carbon emissions of all scenarios from 2019
 11 to 2050 are presented in *Figure 2*. The grid carbon emissions in 2019 are lower for national grid scenarios (S2
 12 to S5) as the analysis of the national grid ignores network and operability constraints on the transmission or
 13 lower voltage networks [45].

14



15
 16 *Figure 2. Future grid carbon emissions for all scenarios*

17
 18 Since a successful and scalable deployment of CCS before 2050 could ensure a net zero transition almost
 19 independently from other available interventions, we will only use scenarios S1, S5 and S6 in our grid emissions
 20 results moving forward. Results from the other three future grid carbon emissions scenarios can be accessed in
 21 the supplementary material. It is also worth considering, given current progress on CCS scalability and
 22 deployment, that CCS mass deployment is an unlikely scenario before 2050 [46].

23

1 2.3.3 Operational carbon

2 Finally, the total annual operational carbon emissions for 2021-2050, O , is then calculated based on the
3 operational energy consumption after:

$$4 \quad O = \sum_{2021}^{2050} O_y = \sum_{2021}^{2050} [(M_e + P) \times OC_{e,y} + M_g \times OC_g + M_o \times OC_o + M_l \times OC_l + M_c \times OC_c + M_m \times \\ 5 \quad OC_m + M_b \times OC_b] \quad (4)$$

6 where M is the annual consumption of a specific fuel in kWh; P is the annual photovoltaic electricity generation
7 fed back to grid in kWh; OC is the carbon emission factor of a specific fuel in gCO₂e/kWh, with the subscript
8 e, g, o, l, c, m , and b standing for electricity, natural gas, oil, LPG, coal, community, and biomass, respectively.
9 The values for OC are taken as $OC_g = 184$, $OC_o = 247$, $OC_l = 214$, $OC_c = 345$, $OC_m = 50$, $OC_b = 16$ [44,
10 47]. Although in the future, more sustainable fuels, e.g. biogas, hydrogen might be able to replace some portion
11 of the carbon intensive fossil fuels currently consumed within residential stock, the approach taken in this study,
12 using the NHM model is based on SAP methodology, which utilises present-day energy vectors and does not
13 take direct account of innovative fuels such as biogas and hydrogen. As such, the implications of these fuels are
14 excluded from the analysis, both in terms of residential demand, as well as, implications such as additional grid
15 generation for fuel production. Therefore, constant carbon emission factors are assumed for natural gas, oil,
16 LPG, coal, community and biomass between 2021 and 2050.

17

18 2.4 Embodied carbon calculation

19 Embodied carbon measures greenhouse gas emissions during the non-operational phase and as such includes
20 emissions released through extraction, manufacture, transportation, assembly, maintenance, replacement,
21 deconstruction, disposal, and end-of-life aspects of the materials and systems that make up a building [48]. The
22 scope of embodied emissions in this study covers cradle-to-gate, i.e., A1-A3 embodied carbon [49]. This
23 essentially covers the supply-chain up to the point that construction products are ready for use at the factory
24 gate.

25

26 2.4.1 Retrofit embodied carbon

27 Insulation: We consider three types of wall insulation in this study. These are solid wall external insulation,
28 internal insulation and cavity wall insulation. Thirteen different insulation materials have been considered in
29 this study to estimate mean embodied emissions across available options. (See SI for the characteristics of the
30 individual insulation materials used.) The thickness of insulation material to meet the required U-value specified
31 in *Table 2* is calculated using

$$32 \quad \delta = \lambda \times (1/U_b - 1/U_a) \quad (5)$$

33 where U_b and U_a are the thermal transmittance of the wall before and after the retrofit in W/(m²·K); δ is the
34 thickness of chosen insulation material in meters; and λ is the thermal conductivity of chosen insulation material
35 in W/(m·K). The embodied carbon of wall insulation, E_w , can then be calculated following

$$E_w = \delta \times A_w \times D \times EC_w \quad (6)$$

where A_w is the total area of retrofitted wall in m^2 , see *Table 3*; D is the density of the chosen insulation material in kg/m^3 ; and EC_w is the cradle-to-gate embodied carbon intensities of the insulation measured in $kgCO_2e/kg$.

Glazing: We consider double and triple glazing as the two types of market available retrofit measures for openings. The embodied carbon of window replacement, E_d , is calculated following

$$E_d = EC_d \times A_d \quad (7)$$

where A_d is the retrofitted window area in m^2 and EC_d is the cradle-to-gate embodied carbon intensities of the replaced window taken as $32.5 \text{ kgCO}_2e/m^2$ for double glazing and $52.4 \text{ kgCO}_2e/m^2$ for triple glazing, respectively [50].

Heat pump and boiler: In the UK, governmental renewable heat schemes like Domestic Renewable Heat Incentive (RHI) have historically promoted the deployment of heat pumps [51]. Air source, ground source, and hybrid heat pumps, i.e., combined air source heat pump and condensing gas boiler, are considered to replace existing boilers in eligible stocks. The embodied carbon of heating system replacement, E_h , is calculated through

$$E_h = EC_h \times T_h + EC_b \times T_b \quad (8)$$

where EC_h is the cradle-to-gate embodied carbon intensities of heat pump in $kgCO_2e/kWh$; T_h is the thermal energy generated by heat pumps for residential space heating and hot water in kWh ; EC_b is the cradle-to-gate embodied carbon intensities of condensing gas boilers in $kgCO_2e/kWh$; and T_b is the thermal energy generated by boilers for residential space heating and hot water measured in kWh . Based on a study by Greening and Azapagic [52], assuming that 95% of global warming potential (GWP) impact is from the operational energy consumption, the life cycle embodied carbon intensities of air source heat pumps, ground source heat pumps and condensing gas boilers are taken as $0.014kgCO_2e/kWh$, $0.009kgCO_2e/kWh$, and $0.015kgCO_2e/kWh$, respectively. Including extraction and processing of fuels and raw materials; system manufacture; installation; maintenance; decommissioning and transportation for heat pumps, as well as extraction and processing of fuels and raw materials; boiler manufacture; decommissioning and transportation for boiler. Given that these values include emissions beyond cradle-to-gate, such as installation and disassembly, our values for these components are likely to lead to a slight overestimation of their cradle-to-gate embodied carbon.

Photovoltaics: We calculate the embodied carbon of the PV modules, E_p , following

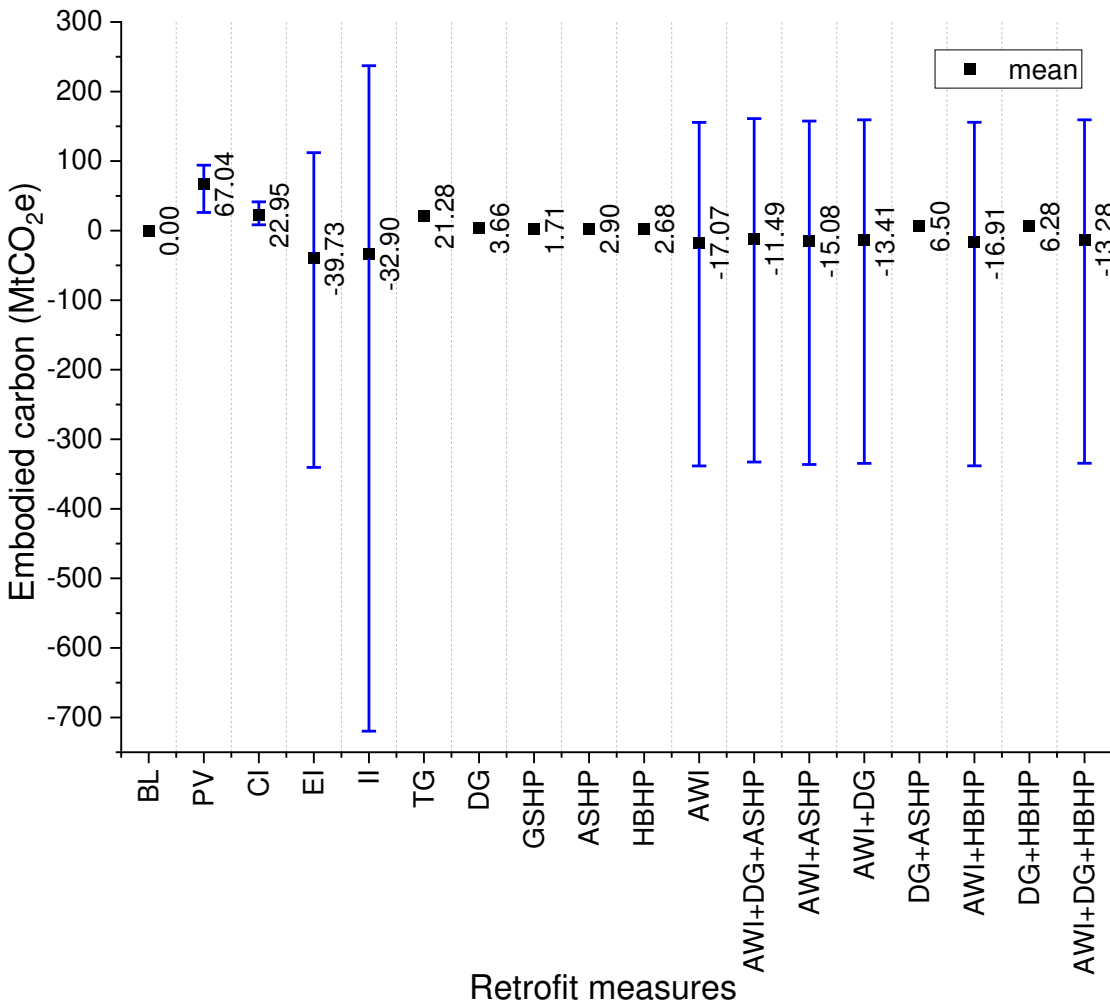
$$E_p = EC_p \times A_p \quad (9)$$

where A_p is the area of PV modules installed in m^2 and EC_p is the cradle-to-gate embodied carbon intensities of PV modules taken as $242 \text{ kgCO}_2/m^2$ for monocrystalline PV modules, $208 \text{ kgCO}_2/m^2$ for polycrystalline PV modules, and $67 \text{ kgCO}_2/m^2$ for thin-film PV modules [50]. The embodied carbon intensities of PV modules only accounts for CO_2 instead of all GHG meaning the overall embodied carbon of PV modules are generally underestimated.

1 **3 Results and discussion**

2 **3.1 Whole-life carbon emissions from retrofit**

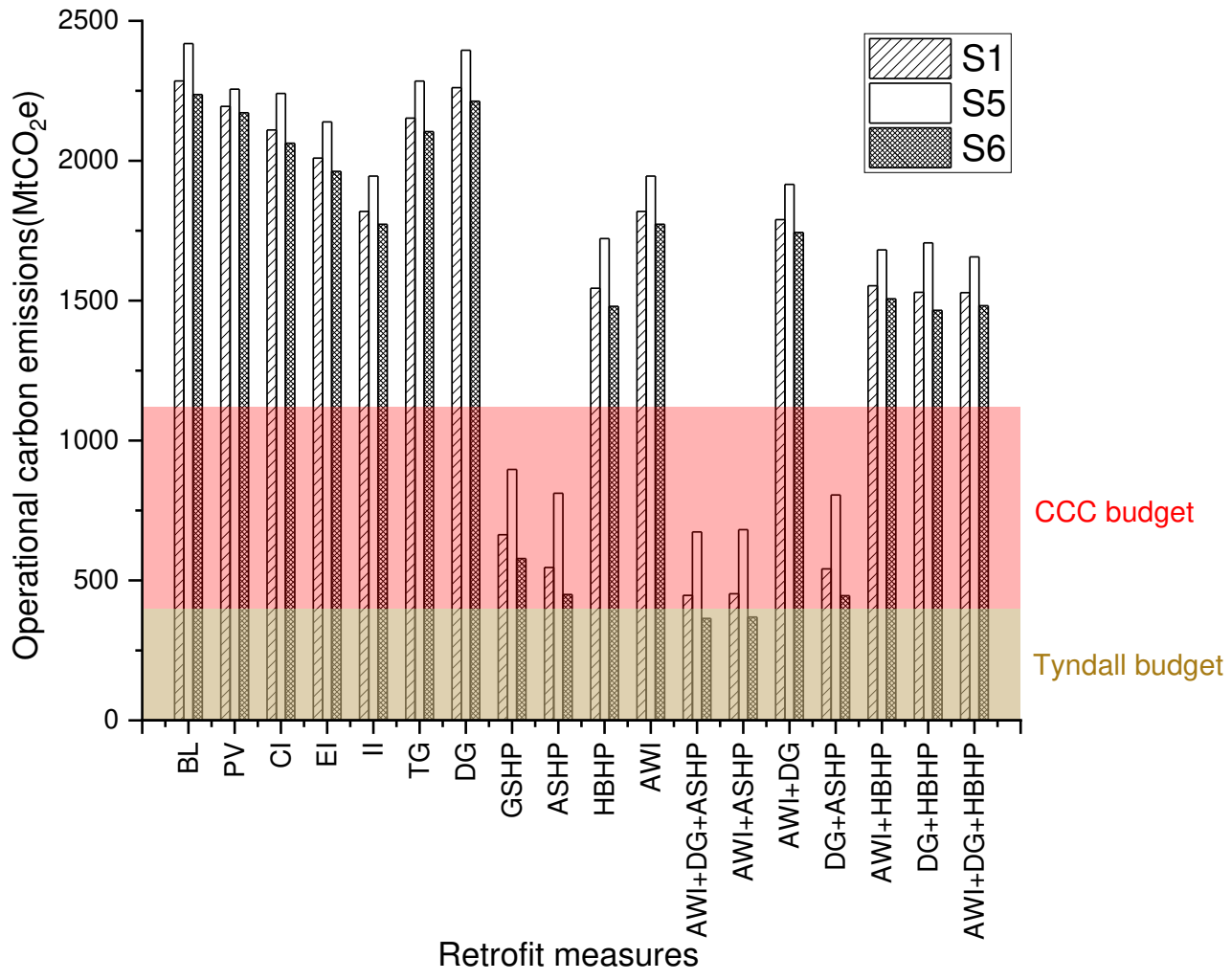
3 The embodied carbon emissions of applying the aforementioned retrofit measures for all suitable residential
 4 buildings in the English housing stock is presented in *Figure 3*. The error bars for embodied emissions account
 5 for the variation in material for insulation and PVs, as more than one material and one type of PV module are
 6 considered. It is clear that retrofit scenarios which include installation of insulation, especially external and
 7 internal insulation, can have a wide range of embodied emissions highlighting the importance of material
 8 selection. For example, when using wood fibre as insulating material, real-terms emission saving can be
 9 achieved as a result of the overall sequestration of carbon within the product.



10
 11 *Figure 3. Embodied carbon emissions of different retrofit scenarios*

12
 13 Figure 4, shows the corresponding operational carbon emissions over a 30-year period up to 2050 and how these
 14 operational emissions relate to the Tyndall and CCC carbon budgets, assuming that all the measures were
 15 undertaken at the beginning of 2021 and that the grid decarbonises at three different rates/scenarios. The
 16 measure that has the biggest impact on operational carbon emissions, while applied on its own, is the ASHP.
 17 However, this has to be combined with insulation measures, AWI+DG+ASHP and AWI +ASHP under S6, to

1 meet the strictest Tyndall carbon budget. When compared with the baseline of undertaking no retrofit at all, the
 2 operational carbon emissions savings of all retrofit scenarios considered range from 1% for DG to 81% for
 3 AWI+DG+ASHP under S1 grid decarbonisation scenario, 1% to 72% under scenario S5, and 1% to 84% under
 4 scenario S6. What is crucial to note, is that, without a mass deployment of air or ground source heat pumps, the
 5 30-year operational carbon emissions from any of the retrofit scenarios would exceed both CCC and Tyndall
 6 carbon budgets.



7
 8 *Figure 4. 30 years (2021-2050) operational carbon emissions of different retrofit scenarios – highlighted*
 9 *regions show the CCC and Tyndall budgets between 2021-2050.*

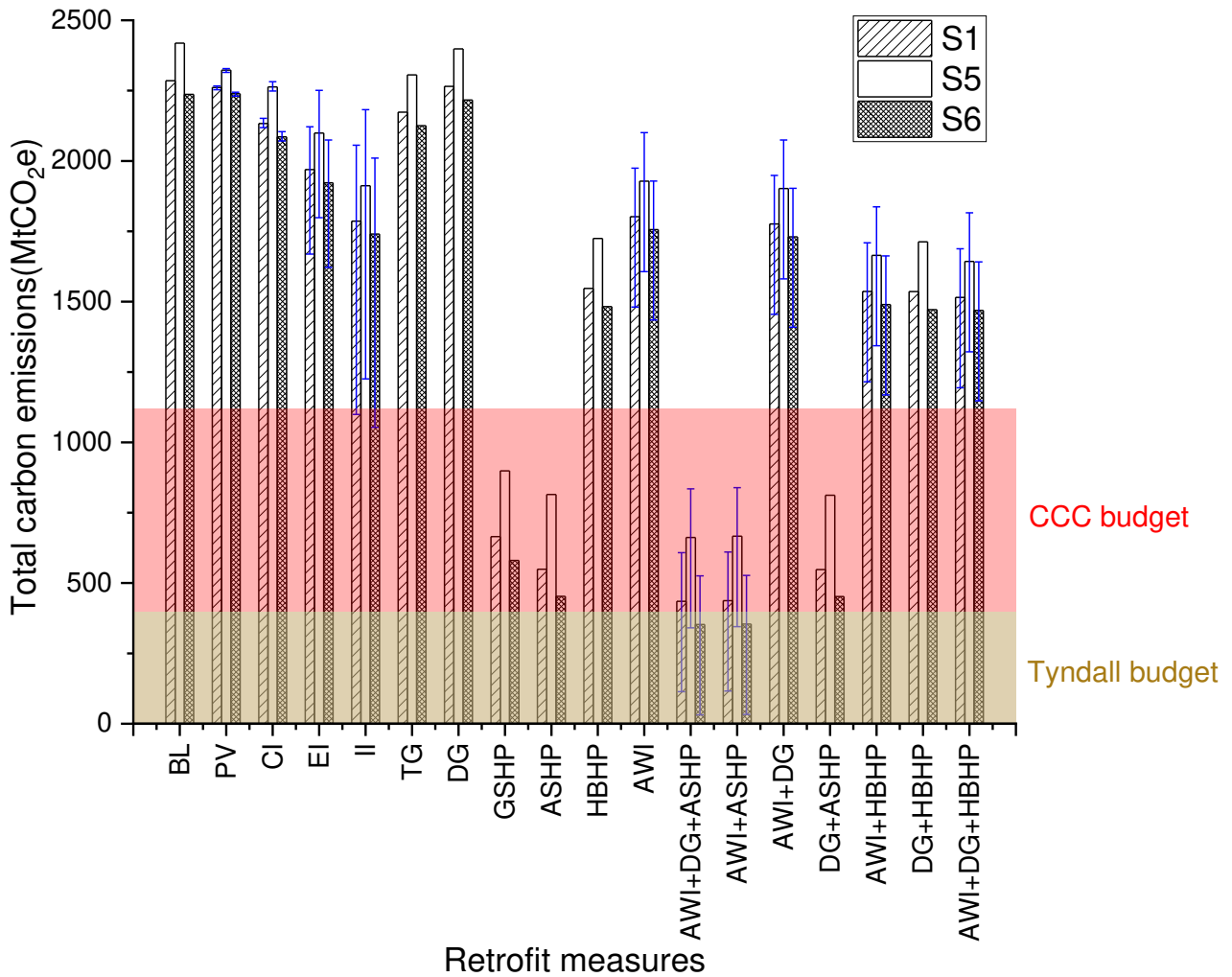
10
 11 Compared with the 30 years of post-retrofit operational carbon emissions, however, the mean embodied carbon
 12 emissions from retrofit measures are almost negligible. Under S1, S5 and S6, the carbon payback of applying
 13 various retrofit measures is presented in Table 4, apart from PV, all scenarios achieved carbon reduction through
 14 retrofit within 5 years, while many of them emit less carbon compared to the baseline from the first year. The
 15 carbon payback for PV modules is over 10 years, and it is not able to payback at the end of our study period (30
 16 years from 2021 to 2050) under the S6 grid decarbonisation scenario. It is of interest to note that both double

1 glazing and triple glazing can achieve carbon payback within 5 years when applied alone. Although the cradle-
 2 to-gate embodied carbon intensities for triple glazing are 1.6 times that of double glazing, the triple glazing
 3 achieved bigger energy savings as more properties can accommodate this upgrade.

4 *Table 4. The carbon payback time [unit: year(s)]*

Retrofit scenario	S1	S5	S6
PV	13	10	>30
CI	4	4	4
EI	1	1	1
II	1	1	1
TG	5	5	5
DG	5	5	5
GSHP	1	1	1
ASHP	1	1	1
HBHP	1	1	1
AWI	1	1	1
AWI+DG+ASHP	1	1	1
AWI+ASHP	1	1	1
AWI+DG	1	1	1
DG+ASHP	1	1	1
AWI+HBHP	1	1	1
DG+HBHP	1	1	1
AWI+DG+HBHP	1	1	1

5
 6 As mentioned, the selection of low environmental impact materials and systems in retrofit can significantly
 7 reduce embodied carbon emissions, as is the case with the external and internal wall insulation. Considering
 8 total whole-life carbon emissions, as shown in Figure 5, careful selection of materials and systems used in
 9 retrofit provides a greater chance to meet stricter carbon budgets. However, there must also be a focus on
 10 ensuring the materials perform well in situ, i.e. to reduce the performance gap [53].



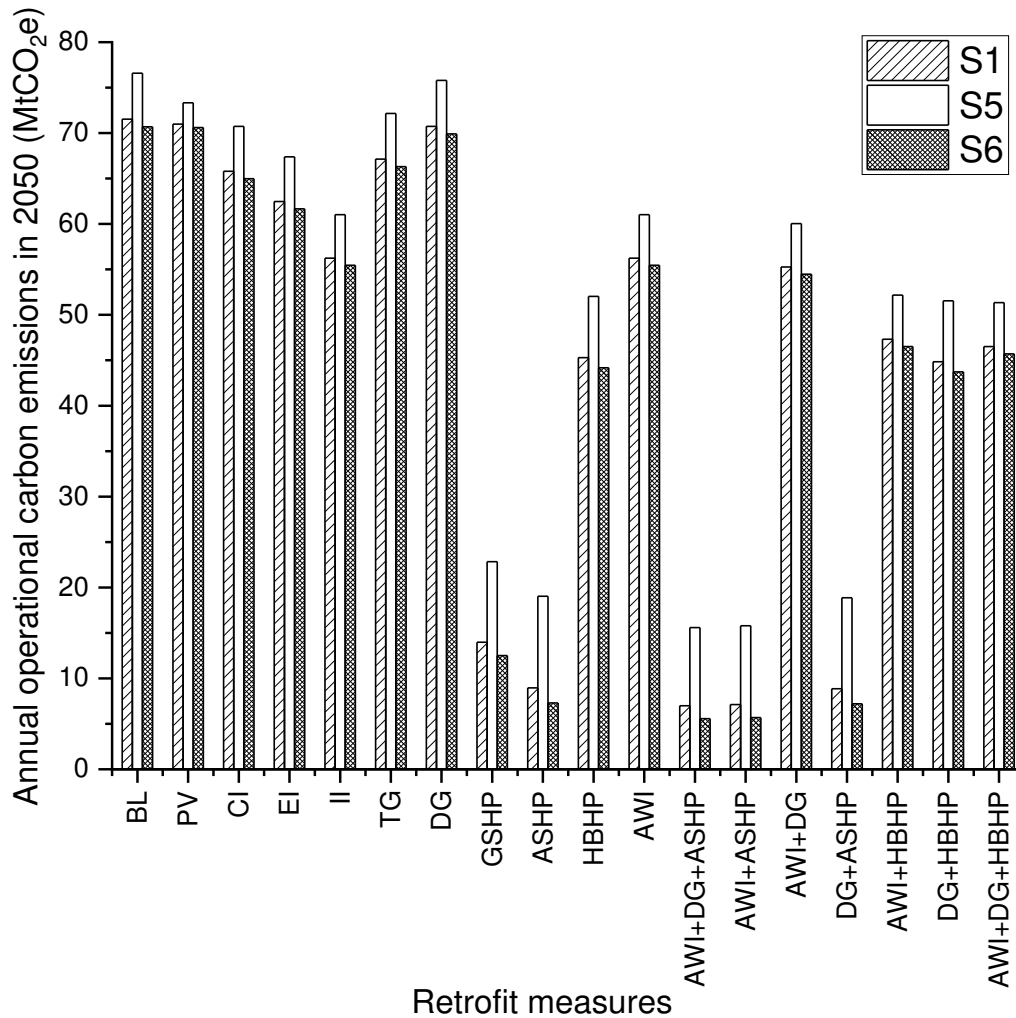
1

2 *Figure 5. 30 years (2021-2050) total embodied and operational carbon emissions when considering different*
 3 *retrofit measures and grid decarbonisation scenarios for English residential stock – note that heat pumps are*
 4 *the only way that the budgets can be met with the Tyndall budget requiring careful selection of insulation*
 5 *material across the entirety of the stock.*

6

7 **3.2 England’s house stock carbon emissions in 2050**

8 The English housing stock will play a key role on whether net zero emissions can be achieved in the UK by
 9 2050. The operational carbon emissions per annum in 2050 for different grid decarbonisation scenarios and
 10 retrofit combinations are presented in Figure 6, by using electricity carbon emission factors in 2050. Based on
 11 the stock operational energy prediction results from NHM, the English housing stock is not likely to achieve
 12 net zero carbon emissions by 2050 through building retrofit measures alone, even when considering non-
 13 transformational grid decarbonisation. Achieving net zero in 2050 therefore likely requires both retrofit,
 14 complete electrification of cooking, successful deployment of CCS technologies and a massive increase in
 15 renewables capacity, likely to be wind, by 2050.



1

2 *Figure 6. Operational carbon emissions in 2050 (one year) for different grid decarbonisation and retrofit*
 3 *scenarios.*

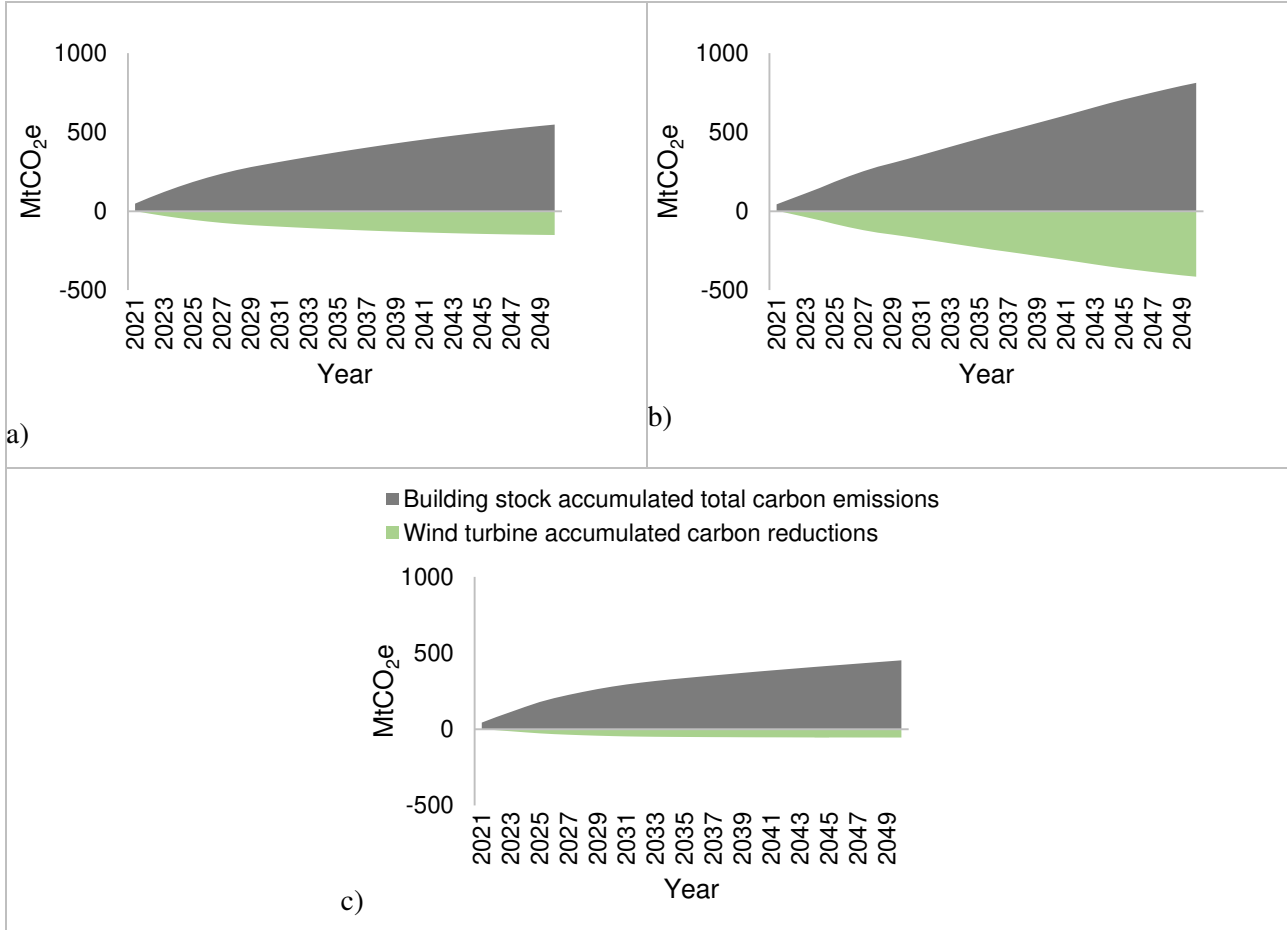
4

5 **3.3 Additional wind capacity to meet carbon budget**

6 UK wind capacity has continuously increased from 5.4 GW in 2010 to 24 GW in 2019. By 2019, wind made
 7 up the UK’s second largest source of electricity [54]. Current ambitious plans to power all UK homes with wind
 8 by 2030 could theoretically provide carbon reduction benefits as well [55]. According to Smoucha and
 9 Fitzpatrick [56], an onshore 2 MW turbine with annual electricity generation of 4520 MWh has 787 tCO₂e of
 10 embodied carbon emissions from the manufacturing stage. Under S1, S5 and S6 grid scenarios, a 2 MW turbine
 11 achieves net carbon reduction at the end of the 2nd year. Whilst a 30-year operation provides for an emissions
 12 offset of 6929 tCO₂e, 13007 tCO₂e and 4721 tCO₂e, respectively, when compared with the grid electricity. This
 13 we use to estimate the wind capacity required to meet Tyndall carbon budget targets.

14 For all the retrofit scenarios considered in this study, among those failing to meet the Tyndall carbon target,
 15 DG+ASHP has the lowest total carbon emissions. After the retrofit interventions, the 30-year total carbon
 16 emissions from the English housing stock (from 2021 to 2050) are 150.88 MtCO₂e, 414.79 MtCO₂e and 54.99

1 MtCO₂e over the Tyndall carbon target under S1, S5 and S6 scenarios, respectively. To help meet the Tyndall
 2 carbon target, 21,776, 31,890 and 11,650 2MW turbines need to be installed in 2021 depending on the grid
 3 scenario. The accumulated carbon emissions from the stock after DG+ASHP retrofit and accumulated carbon
 4 reductions from the wind turbines from 2021 to 2050 are presented in Figure 7.
 5



6 Figure 7. The carbon emissions from English house stock after DG+ASHP retrofit and carbon reduction from
 7 wind turbines between 2021 and 2050 under S1 (a), S5 (b) and S6 (c)– the accumulated carbon reduction
 8 from wind turbines are assigned with negative values to offset the accumulated carbon emissions from the
 9 stock.

10
 11 With the installation of enough wind turbines, the Tyndall carbon target can be achieved. However, deploying
 12 the equivalent capacity of up to nearly 32 thousand 2 MW wind turbines would pose practical challenges to
 13 load management in the national grid, and construction challenges to deliver this level of capacity. More
 14 generally, our results highlight mass deployment of heat pumps to be fundamental when trying to meet carbon
 15 targets for the residential stock in England. This on its own means that the electrification of residential demand
 16 is crucial in meeting targets. The increase of electricity demand for space heating ranges from 1.76 TWh to
 17 82.72 TWh in 9 out of 18 retrofit scenarios utilizing heat pumps, i.e 0.5% to 23.9% of the total UK electricity

1 demand in 2019 [57], which is in itself a challenge to grid supply balance and grid decarbonisation in the UK
2 [58].

3 4 **3.4 Limitations**

5 The embodied carbon calculated here covers only cradle-to-site (A1-A3) unless otherwise specified. This means
6 our embodied carbon estimates, while low, do not include the emissions associated with the construction process
7 stage (A4-A5), use stage (B1-B7), and end of life stage (C1-C4) of the retrofit interventions [59]. Moreover, we
8 have not considered circumstances under which retrofit interventions might require replacement during the 30-
9 year study period of 2021-2050. Depending on the working environment and the service life of the specific
10 retrofit materials and PV modules used, they may need to be replaced. The embodied carbon emissions of retrofit
11 materials and PV modules in this study are, as such, likely to be underestimated.

12 During the NHM simulations, fixed regionally specific weather profiles were used to calculate the annual energy
13 consumption of the English housing stock without considering the potential impacts of climate change. The
14 monthly climatic conditions are taken from the SAP2012 (Appendix U) regional values and were considered
15 not to change from year to year. With the progress of global warming, the residential energy consumption
16 structure will switch from space heating to space cooling, leading to higher space cooling loads and lower space
17 heating loads compared to SAP2012 weather data. We have utilized a constant annual operational energy
18 consumption for 30 years, although the energy saving efficiency of retrofit interventions tends to decrease over
19 time due to factors such as system degradation and occupant behaviour [60]. These would potentially lead to
20 stricter requirements for building retrofit carbon efficiency in order to meet the carbon budgets.

21 The NHM model also makes in-built assumptions regarding the types of PV modules which result in an
22 electricity generation efficiency of 20%. In reality, the efficiency of different modules as deployed may differ,
23 with the efficiencies of monocrystalline, polycrystalline and thin-film PV panels ranging between 10% to 22%
24 [61]. The embodied carbon emissions of the PV retrofit scenario is likely to be underestimated as we only
25 accounted for PV modules, while a house-integrated PV system have other components, such as inverter and
26 batteries.

27 For all retrofit scenarios including wall insulation measures, a U-value of 0.1 W/(m²·K) is assumed to have been
28 achieved after retrofit, which as stated in section 2.2 is stricter compared to the current standard requirement.
29 Such low U-values may not be feasible to achieve due to their high cost and the space they would physically
30 require to be installed. This would lead to a higher post retrofit U-value and a smaller operational carbon
31 reduction compared to our estimates.

32 The above-mentioned limitations are likely to result in an underestimation of whole life carbon emissions of the
33 building stock, which in turn makes meeting the carbon targets even more challenging in practice. As the results
34 of the study show, even immediate residential stock retrofit deployment requires combined retrofit actions to
35 meet carbon budgets. The retrofit challenge will increase exponentially with delays in deployment.

1 Finally, the carbon budget projection in this study is based on the historical proportions of carbon emissions
2 from residential stock. Depending on the difficulty of carbon reduction in different sectors, the carbon budget
3 assigned to residential stock might be higher or lower than what is estimated here.

4 **4 Conclusions and Policy Implications**

6 By combining the operational carbon calculated and cradle-to-gate embodied carbon of retrofit materials and
7 systems in this study, we have investigated the whole-life carbon performance of retrofit measures in the whole
8 English house stock. The results are compared with carbon targets to support retrofit policy making in achieving
9 net zero emissions without overspending the emissions budget. At our current emissions rate, we have shown
10 England's homes to have produced somewhere over 2200 MtCO_{2e} by 2050. This leads to surpassing the CCC
11 and Tyndall carbon budget by over 1100 MtCO_{2e} and over 1800 MtCO_{2e} respectively under S1, S5 and S6. We
12 have also shown that even under large-scale residential retrofit scenarios, total emissions consistently overshoot
13 the 2050 carbon budget, except for those aggressively deploying heat pumps and thus electrifying heating.
14 Given our implicit assumption that all retrofit measures have already been implemented at the start of 2021, the
15 following policy recommendations are critical to achieve net zero by 2050 within in the residential sector:

- 16 1. Rapidly increased heat pump deployment, without the current planned delays until 2028. Given
17 nearly 20 million homes in England alone are eligible for heat-pumps, installing at the pace of current
18 targets, i.e., achieving a deployment rate of only 600 thousand heat pumps annually by 2028, will
19 require an additional 25 years after 2028 before every home is converted.
- 20 2. Carefully select materials to retrofit building envelopes to drive down the embodied carbon
21 emissions from retrofit, whilst reducing the heating demand to maintain a comfortable indoor
22 environment. Thus, leading to less electricity consumption during operation and lower electricity bills
23 for heating when switched to heat pump systems.
- 24 3. Current targets for offshore wind are insufficient to achieve net zero carbon by 2050 and need
25 to be made more ambitious. Our estimates suggest deployment of over 11 thousand additional 2 MW
26 wind turbines in the beginning of 2021 is required in tandem with the nationwide installation of heat
27 pumps and double glazing in order to meet the Tyndall carbon budget for the English house stock.

28 Measures 1 and 2 need to be deployed across all homes, creating challenges in financing, and incentivising what
29 can be disruptive retrofits. Thus, there is a need to increase awareness about the potential energy/carbon/cost
30 savings, from residential retrofit, in addition to the thermal comfort benefits. Attractive financing options will
31 need to be provided to enable all homeowners to undertake retrofits given their key role in delivering widespread
32 decarbonisation, and these need to be made available near immediately given the pace of change we have shown
33 is required to meet carbon budgets. Measure 3 is in some respects simpler in that it is not at the mercy of millions
34 of individual homeowners, but the need is no less urgent and requires significant government investment and
35 leadership.

1 **Acknowledgements:** This research is financially supported by EPSRC Active Building Centre program of
2 work [EP/S016627/1, EP/V012053/1], and EPSRC UKCRIC-CORONA: City Observatory Research Platform
3 for Innovation and Analytics [EP/R013411/1]. EPSRC had no involvement in study design; in the collection,
4 analysis and interpretation of data; in the writing of the report; and in the decision to submit the article for
5 publication

6 **Data Accessibility** The data used for the analysis presented in this paper is available at the online supplementary
7 materials for this paper.

9 References

- 10 [1] Morton A. Countries must triple climate emission cut targets to limit global heating to
11 2C.[https://www.theguardian.com/environment/2019/sep/23/countries-must-triple-climate-emissions-targets-](https://www.theguardian.com/environment/2019/sep/23/countries-must-triple-climate-emissions-targets-to-limit-global-heating-to-2c)
12 [to-limit-global-heating-to-2c](https://www.theguardian.com/environment/2019/sep/23/countries-must-triple-climate-emissions-targets-to-limit-global-heating-to-2c); 2019 [accessed 28 Dec 2020].
- 13 [2] GOV. UK becomes first major economy to pass net zero emissions
14 law.<https://www.gov.uk/government/news/uk-becomes-first-major-economy-to-pass-net-zero-emissions-law>;
15 2019 [accessed 12 Aug 2019].
- 16 [3] CCC. Net Zero: The UK's Contribution to Stopping Global Warming. [https://www.theccc.org.uk/wp-](https://www.theccc.org.uk/wp-content/uploads/2019/05/Net-Zero-The-UKs-contribution-to-stopping-global-warming.pdf)
17 [content/uploads/2019/05/Net-Zero-The-UKs-contribution-to-stopping-global-warming.pdf](https://www.theccc.org.uk/wp-content/uploads/2019/05/Net-Zero-The-UKs-contribution-to-stopping-global-warming.pdf); 2019.
- 18 [4] Januta A. Global carbon emissions rebound to near pre-pandemic
19 levels.[https://www.reuters.com/business/cop/global-carbon-emissions-rebound-near-pre-pandemic-levels-](https://www.reuters.com/business/cop/global-carbon-emissions-rebound-near-pre-pandemic-levels-2021-11-04/)
20 [2021-11-04/](https://www.reuters.com/business/cop/global-carbon-emissions-rebound-near-pre-pandemic-levels-2021-11-04/); 2021 [accessed 2021 12 Nov].
- 21 [5] CCC. The Sixth Carbon Budget Methodology Report. [https://www.theccc.org.uk/wp-](https://www.theccc.org.uk/wp-content/uploads/2020/12/The-Sixth-Carbon-Budget-Methodology-Report.pdf)
22 [content/uploads/2020/12/The-Sixth-Carbon-Budget-Methodology-Report.pdf](https://www.theccc.org.uk/wp-content/uploads/2020/12/The-Sixth-Carbon-Budget-Methodology-Report.pdf); 2020.
- 23 [6] CCC. UK housing: Fit for the future? [https://www.theccc.org.uk/wp-content/uploads/2019/02/UK-housing-](https://www.theccc.org.uk/wp-content/uploads/2019/02/UK-housing-Fit-for-the-future-CCC-2019.pdf)
24 [Fit-for-the-future-CCC-2019.pdf](https://www.theccc.org.uk/wp-content/uploads/2019/02/UK-housing-Fit-for-the-future-CCC-2019.pdf); 2019.
- 25 [7] HM Government. UK Hydrogen
26 Strategy.[https://assets.publishing.service.gov.uk/government/uploads/system/uploads/attachment_data/file/10](https://assets.publishing.service.gov.uk/government/uploads/system/uploads/attachment_data/file/1011283/UK-Hydrogen-Strategy_web.pdf)
27 [11283/UK-Hydrogen-Strategy_web.pdf](https://assets.publishing.service.gov.uk/government/uploads/system/uploads/attachment_data/file/1011283/UK-Hydrogen-Strategy_web.pdf); 2021 [accessed
- 28 [8] Henretty N. Energy efficiency of housing in England and
29 Wales.[https://www.ons.gov.uk/peoplepopulationandcommunity/housing/articles/energyefficiencyofhousingin](https://www.ons.gov.uk/peoplepopulationandcommunity/housing/articles/energyefficiencyofhousinginenglandandwales/2020-09-23#energy-efficiency-of-new-and-existing-dwellings)
30 [englandandwales/2020-09-23#energy-efficiency-of-new-and-existing-dwellings](https://www.ons.gov.uk/peoplepopulationandcommunity/housing/articles/energyefficiencyofhousinginenglandandwales/2020-09-23#energy-efficiency-of-new-and-existing-dwellings); 2020 [accessed 1 Mar 2021].
- 31 [9] Nieto J, Brockway P, Barrett J. Socio-macroeconomic impacts of meeting new build and retrofit UK building
32 energy targets to 2030: a MARCO-UK modelling study. Sustainability Research Institute (SRI) Working Paper
33 No 1212020.
- 34 [10] BEIS & MHCLG. Energy Performance Certificates for buildings: Action plan.
35 [https://assets.publishing.service.gov.uk/government/uploads/system/uploads/attachment_data/file/922660/EP](https://assets.publishing.service.gov.uk/government/uploads/system/uploads/attachment_data/file/922660/EP_C_Action_Plan.pdf)
36 [C Action Plan.pdf](https://assets.publishing.service.gov.uk/government/uploads/system/uploads/attachment_data/file/922660/EP_C_Action_Plan.pdf); 2020.
- 37 [11] BEIS & DLUHC. Improving Energy Performance Certificates: action plan - progress report.
38 [https://www.gov.uk/government/publications/improving-energy-performance-certificates-action-plan-](https://www.gov.uk/government/publications/improving-energy-performance-certificates-action-plan-progress-report/improving-energy-performance-certificates-action-plan-progress-report)
39 [progress-report/improving-energy-performance-certificates-action-plan-progress-report](https://www.gov.uk/government/publications/improving-energy-performance-certificates-action-plan-progress-report/improving-energy-performance-certificates-action-plan-progress-report); 2021.
- 40 [12] HM Government. The Ten Point Plan for a Green Industrial
41 Revolution.<https://www.gov.uk/government/publications/the-ten-point-plan-for-a-green-industrial-revolution>;
42 2020 [accessed 3 Mar 2021].
- 43 [13] GOV. New plans to make UK world leader in green energy.[https://www.gov.uk/government/news/new-](https://www.gov.uk/government/news/new-plans-to-make-uk-world-leader-in-green-energy)
44 [plans-to-make-uk-world-leader-in-green-energy](https://www.gov.uk/government/news/new-plans-to-make-uk-world-leader-in-green-energy); 2020 [accessed 21 Jan 2021].
- 45 [14] Ahlrichs J, Rockstuhl S, Tränkler T, Wenninger S. The impact of political instruments on building energy
46 retrofits: A risk-integrated thermal Energy Hub approach. Energy Policy. 2020;147.
- 47 [15] Miu L, Hawkes AD. Private landlords and energy efficiency: Evidence for policymakers from a large-scale
48 study in the United Kingdom. Energy Policy. 2020;142.

1 [16] Trotta G. The determinants of energy efficient retrofit investments in the English residential sector. *Energy*
2 *Policy*. 2018;120:175-82.

3 [17] Galassi V, Madlener R. Shall I open the window? Policy implications of thermal-comfort adjustment
4 practices in residential buildings. *Energy Policy*. 2018;119:518-27.

5 [18] Broad O, Hawker G, Dodds PE. Decarbonising the UK residential sector: The dependence of national
6 abatement on flexible and local views of the future. *Energy Policy*. 2020;140.

7 [19] Gillich A, Saber EM, Mohareb E. Limits and uncertainty for energy efficiency in the UK housing stock.
8 *Energy Policy*. 2019;133.

9 [20] Killip G, Owen A. The construction industry as agents of energy demand configuration in the existing
10 housing stock. *Energy Policy*. 2020;147.

11 [21] Wade F, Bush R, Webb J. Emerging linked ecologies for a national scale retrofitting programme: The role
12 of local authorities and delivery partners. *Energy Policy*. 2020;137.

13 [22] Li X, Densley Tingley D. Solid wall insulation of the Victorian house stock in England: A whole life carbon
14 perspective. *Building and Environment*. 2021;191.

15 [23] Piddington J, Nicol S, Garrett H, Custard M. The Housing Stock of The United Kingdom.
16 https://files.bregroup.com/bretrust/The-Housing-Stock-of-the-United-Kingdom_Report_BRE-Trust.pdf; 2020.

17 [24] CCC. Advice on reducing the UK's emissions. [https://www.theccc.org.uk/about/our-expertise/advice-on-](https://www.theccc.org.uk/about/our-expertise/advice-on-reducing-the-uks-emissions/)
18 [reducing-the-uks-emissions/](https://www.theccc.org.uk/about/our-expertise/advice-on-reducing-the-uks-emissions/); 2020 [accessed 7 Mar 2021].

19 [25] Tyndall center. The Tyndall Carbon Budget Tool. <https://carbonbudget.manchester.ac.uk/reports/>; [accessed
20 25 May 2020].

21 [26] UKGBC. Climate Change: UKGBC's vision for a sustainable built environment is one that mitigates and
22 adapts to climate change. <https://www.ukgbc.org/climate-change/>; 2020 [accessed 8 May 2020].

23 [27] Green Construction Board. Low Carbon Routemap for the UK Built Environment.
24 <https://www.greenconstructionboard.org/otherdocs/Routemap%20final%20report%2005032013.pdf>; 2013.

25 [28] Anderson K, Broderick JF, Stoddard I. A factor of two: how the mitigation plans of 'climate progressive'
26 nations fall far short of Paris-compliant pathways. *Climate Policy*. 2020;20:1290-304.

27 [29] Kuriakose J, Jones C, Anderson K, Broderick J, McLachlan C. Setting Climate Commitments for
28 Cambridge. <https://carbonbudget.manchester.ac.uk/reports/E07000008/print/>; 2021 [accessed 1 Mar 2021].

29 [30] CCC. Reducing UK emissions: Progress Report to Parliament.
30 <https://www.theccc.org.uk/publication/reducing-uk-emissions-2020-progress-report-to-parliament/>; 2020.

31 [31] CCC. The Sixth Carbon Budget The UK's path to Net Zero. [https://www.theccc.org.uk/wp-](https://www.theccc.org.uk/wp-content/uploads/2020/12/The-Sixth-Carbon-Budget-The-UKs-path-to-Net-Zero.pdf)
32 [content/uploads/2020/12/The-Sixth-Carbon-Budget-The-UKs-path-to-Net-Zero.pdf](https://www.theccc.org.uk/wp-content/uploads/2020/12/The-Sixth-Carbon-Budget-The-UKs-path-to-Net-Zero.pdf); 2020.

33 [32] DCLG. English Housing Survey: Profile of English Housing 2012.
34 [https://assets.publishing.service.gov.uk/government/uploads/system/uploads/attachment_data/file/335753/EH](https://assets.publishing.service.gov.uk/government/uploads/system/uploads/attachment_data/file/335753/EH_S_Profile_of_English_housing_2012.pdf)
35 [S_Profile_of_English_housing_2012.pdf](https://assets.publishing.service.gov.uk/government/uploads/system/uploads/attachment_data/file/335753/EH_S_Profile_of_English_housing_2012.pdf); 2014.

36 [33] Bhattacharya M, Inekwe JN, Sadorsky P. Consumption-based and territory-based carbon emissions
37 intensity: Determinants and forecasting using club convergence across countries. *Energy Economics*. 2020;86.

38 [34] Salem R, Bahadori-Jahromi A, Mylona A, Godfrey P, Cook D. Life-cycle cost analysis of retrofit scenarios
39 for a UK residential dwelling. *Proceedings of the Institution of Civil Engineers - Engineering Sustainability*.
40 2020;173:57-72.

41 [35] Lowe R, Summerfield A, Oikonomou E, Love J, Biddulph P, Gleeson C, et al. Final report on analysis of
42 heat pump data from the renewable heat premium payment (RHPP) scheme
43 https://assets.publishing.service.gov.uk/government/uploads/system/uploads/attachment_data/file/606818/DE
44 [CC RHPP 161214 Final Report v1-13.pdf](https://assets.publishing.service.gov.uk/government/uploads/system/uploads/attachment_data/file/606818/DE); 2017.

45 [36] HM Government. Approved Document L1B: conservation of fuel and power in existing dwellings, 2010
46 edition (incorporating 2010, 2011, 2013, 2016 and 2018 amendments). 2018.

47 [37] Passivhaus trust. The UK no longer just cool. <https://www.passivhaustrust.org.uk/news/detail/?nId=597>;
48 2016 [accessed 8 Nov 2021].

49 [38] Downson. M. CIBSE Case Study: 1960s Housing Estate Refurbishment Creates Low Carbon
50 Homes. <https://www.cibse.org/knowledge/knowledge-items/detail?id=a0q20000008JgXY>; 2012 [accessed 15
51 Oct 2021].

52 [39] BEIS. National Household Model. [https://data.gov.uk/dataset/957eadbe-43b6-4d8d-b931-](https://data.gov.uk/dataset/957eadbe-43b6-4d8d-b931-8594cb346ecd/national-household-model)
53 [8594cb346ecd/national-household-model](https://data.gov.uk/dataset/957eadbe-43b6-4d8d-b931-8594cb346ecd/national-household-model); 2017 [accessed 11 Feb 2021].

1 [40] BRE. The Government's Standard Assessment Procedure for Energy Rating of
2 Dwellings.https://www.bre.co.uk/filelibrary/SAP/2012/SAP-2012_9-92.pdf; 2014 [accessed 12 Jan 2021].

3 [41] BRE. BREDEM 2012: A technical description of the BRE Domestic Energy
4 Model.<https://www.bre.co.uk/filelibrary/bredem/BREDEM-2012-specification.pdf>; 2013 [accessed 12 Jan
5 2021].

6 [42] BEIS. 2019 UK greenhouse gas emissions, provisional
7 figures.[https://www.gov.uk/government/statistics/provisional-uk-greenhouse-gas-emissions-national-
8 statistics-2019](https://www.gov.uk/government/statistics/provisional-uk-greenhouse-gas-emissions-national-statistics-2019); 2020 [accessed 24 Dec 2020].

9 [43] national grid. Future Energy Scenarios. <https://www.nationalgrideso.com/document/173821/download>;
10 2020.

11 [44] BEIS. Greenhouse gas reporting: conversion factors
12 2019.<https://www.gov.uk/government/publications/greenhouse-gas-reporting-conversion-factors-2019>; 2019
13 [accessed 9 Feb 2021].

14 [45] national grid. FES Modelling Methods 2020.
15 <https://www.nationalgrideso.com/document/173796/download>; 2020.

16 [46] Bui M, Adjiman CS, Bardow A, Anthony EJ, Boston A, Brown S, et al. Carbon capture and storage (CCS):
17 the way forward. *Energy & Environmental Science*. 2018;11:1062-176.

18 [47] DECC. Assessment of the costs, performance and characteristics of UK heat networks.
19 [https://www.gov.uk/government/publications/assessment-of-the-costs-performance-and-characteristics-of-uk-
20 heat-networks](https://www.gov.uk/government/publications/assessment-of-the-costs-performance-and-characteristics-of-uk-heat-networks); 2015.

21 [48] UK Green Building Council. Tackling embodied carbon in buildings. The Crown Estate; 2015.

22 [49] RICS. Whole life carbon assessment for the built environment. 2017.

23 [50] Jones C, Hammond G. Inventory of carbon & energy (ICE) V3.0 - 7 Nov 2019. 2019.

24 [51] GOV. Domestic Renewable Heat Incentive (RHI).<https://www.gov.uk/domestic-renewable-heat-incentive>;
25 2015 [accessed 16 Jun 2020].

26 [52] Greening B, Azapagic A. Domestic heat pumps: Life cycle environmental impacts and potential
27 implications for the UK. *Energy*. 2012;39:205-17.

28 [53] Gupta R, Kotopoulos A. Magnitude and extent of building fabric thermal performance gap in UK low
29 energy housing. *Applied Energy*. 2018;222:673-86.

30 [54] Department for Business EIS. Energy Trends: March 2020, special feature article - Wind powered
31 electricity in the UK. GOV. 2020.

32 [55] Elgot J, Ambrose J, Harvey F. Boris Johnson to unveil plan to power all UK homes with wind by
33 2030.[https://www.theguardian.com/politics/2020/oct/05/boris-johnson-to-unveil-plan-to-power-all-uk-homes-
34 with-wind-by-2030?CMP=Share_AndroidApp_Other](https://www.theguardian.com/politics/2020/oct/05/boris-johnson-to-unveil-plan-to-power-all-uk-homes-with-wind-by-2030?CMP=Share_AndroidApp_Other); 2020 [accessed 21 Dec 2020].

35 [56] Smoucha EA, Fitzpatrick K. Life Cycle Analysis of the Embodied Carbon Emissions from 14 Wind
36 Turbines with Rated Powers between 50 Kw and 3.4 Mw. *Journal of Fundamentals of Renewable Energy and
37 Applications*. 2016;6.

38 [57] BEIS. Digest of UK Energy Statistics (DUKES):
39 electricity.[https://www.gov.uk/government/statistics/electricity-chapter-5-digest-of-united-kingdom-energy-
40 statistics-dukes](https://www.gov.uk/government/statistics/electricity-chapter-5-digest-of-united-kingdom-energy-statistics-dukes); 2020 [accessed 30 Nov 2020].

41 [58] Johnson RC, Mayfield M, Beck SBM. Utilization of stochastically located customer owned battery energy
42 storage systems for violation management on UK LV residential feeders with varying renewables penetrations.
43 *Journal of Energy Storage*. 2018;19:52-66.

44 [59] BSI. BS EN 15978: 2011. Sustainability of construction works Assessment of environmental performance
45 of buildings Calculation method. 2011.

46 [60] BEIS. National Energy Efficiency Data-Framework
47 (NEED).<https://www.gov.uk/government/collections/national-energy-efficiency-data-need-framework>; 2020
48 [accessed 25 Oct 2020].

49 [61] Sendy A. Types of solar panels: which one is the best choice?[https://www.solarreviews.com/blog/pros-
50 and-cons-of-monocrystalline-vs-polycrystalline-solar-panels](https://www.solarreviews.com/blog/pros-and-cons-of-monocrystalline-vs-polycrystalline-solar-panels); 2020 [accessed 3 Nov 2020].

51

Net Zero by 2050: investigating carbon-budget compliant retrofit measures for the English housing stock

Li, X.^{1*}, Arbabi, H.¹, Bennett, G.², Oreszczyn, T.², and Densley Tingley, D.¹

¹ =Department of Civil & Structural Engineering, University of Sheffield, Sir Frederick Mapping Building, Sheffield S1 3JD, United Kingdom

² =UCL Energy Institute, University College London, 14 Upper Woburn Place, WC1H 0NN, United Kingdom

* = Corresponding Author, xinyi.li@sheffield.ac.uk

Abstract

The UK has enacted one of the most ambitious carbon reduction targets striving for net zero emissions by 2050. A major challenge to achieving this is decarbonizing heating demand with almost 25m homes in need of retrofit. This paper explores a range of retrofit interventions to the English residential stock. These are deployed immediately in 2021 to investigate the maximum carbon reduction that could be achieved. The impact of these interventions on embodied and operational carbon emissions is estimated from 2021-2050. The resulting emissions are compared to estimated national carbon budgets, in order to ascertain, if, and with what combination of retrofit measures, the English housing stock can stay within carbon budgets. The results show that mass deployment of air source or ground source heat pumps can reliably achieve combined embodied and operational emissions within national carbon budgets by 2050. The careful selection of insulation materials is key in bringing down the embodied emissions, particularly to meet stricter carbon budgets. The identified scale and pace of deployment thus needed to stay within carbon budgets is likely to pose enormous practical challenges. To overcome these challenges, we argue for (a) urgently increasing both heat pump deployment, and renewable generation targets beyond existing pledges, (b) increasing social awareness of residential retrofit benefits, and (c) providing more attractive financing options to incentivise and facilitate retrofit uptake.

Highlights

- Exploration of retrofit measures to meet carbon budget for English housing stock
- Whole life carbon analysis including both embodied and operational carbon emissions
- Carbon payback for all measures except PV estimated to be within 5 years
- CCC Carbon budget only met with rapid deployment of air/ground source heat pumps
- Meeting Tyndall carbon budget also requires wall insulation using low carbon materials

Keywords: Retrofit scenarios, Decarbonisation pathways, Embodied carbon, Operational carbon, Whole life carbon, Residential stock, Carbon budget

Word count: 6830

List of abbreviations

ASHP	Air Source Heat Pump
AWI	All Walls Insulated
BL	Baseline
CCC	Committee on Climate Change
CCS	Carbon Capture and Storage
CI	Cavity Insulation
COP	Coefficient Of Performance
DG	Double Glazing
EHS	English Housing Survey
EI	External Insulation
EPC	Energy Performance Certificate
GHG	Greenhouse Gas
GSHP	Ground Source Heat Pump
GWP	Global Warming Potential
HBHP	Hybrid Heat Pump
II	Internal Insulation
NHM	National Household Model
PV	Photovoltaic
TG	Triple Glazing

1 Introduction

To keep the global temperature rise to within 1.5°C, in line with the Paris climate accord, drastic decarbonisation measures are needed [1]. In 2019, the UK became one of the first advanced economies to pass legislation to target net zero greenhouse gas emissions by 2050 [2]. Prior to the disruption caused by the COVID-19 pandemic, the UK was projected to miss its previously set 2030s fourth and fifth carbon budgets even though it overachieved the targets set for 2020 [3]. As the world recovers from the pandemic, global carbon emissions have rebounded to near pre-pandemic levels [4]. Therefore, efforts are still urgently needed to keep UK carbon emissions within the pre-set carbon budgets.

1.1 UK residential emissions and retrofit

Direct and indirect greenhouse gas (GHG) emissions from the residential building sector accounted for 16% of the UK's total emissions in 2019 [5]. A recent report by the Committee on Climate Change points out that achieving the net zero emissions goal is all but impossible without decarbonizing England's existing residential stock of almost 25m homes [6]. Between 1990 and 2004 the residential stock saw next to no reduction in direct carbon dioxide emissions, and between 2004 and 2019 it saw a 25% reduction [6]. Decarbonisation of the

English stock can be achieved by a range of measures, applied both on the supply side and demand side. Upgrades to deliver a net zero carbon energy supply system include switching to decarbonised electricity, e.g. on and offshore wind, district heating with biomass, and repurposing the existing gas network for 100% hydrogen. These, however, often need to be designed in conjunction with building level retrofit measures. For example, an increased renewable electricity grid mix/capacity still requires building retrofit to electrify heating, i.e. through installation of heat pumps. Whereas hydrogen, at least in the UK, is unlikely to be reliably available in the network before 2030[7]. This would leave nearly a decade of unmitigated residential emissions. Building level retrofit measures on the demand side, include improving the efficiency of the building fabric, heating systems, lighting and appliances. In England, more than half the stock has an energy efficiency band of D or worse (rated from A-G, with A being the top rating) with a large portion of the housing stock built before 1980 [8].The significant size and age of the stock means that, in addition to its importance to the decarbonisation targets, building retrofit can also provide a significant opportunity to boost economic activity by increasing employment and wages [9]. Although there are many options for achieving net zero, practically delivering this transition will pose several challenges, including identifying the stock most in need of intervention, the deployment of the right mix of intervention measures that are practical, and most cost effective, for both homeowners and the wider energy system.

The 2020-released UK Energy Performance Certificate (EPC) action plan aims to make energy performance data more accurate, reliable, and accessible in order to better plan for the net zero transition [10]. By November 2021, 11 of the 35 actions were already completed, and the remaining had commenced [11]. Furthermore, the UK Government’s Green Industrial Revolution aims to reduce carbon emissions by 71MtCO_{2e} between 2023-2032 by installing 600 thousand heat pumps annually by 2028, improving the energy efficiency of 2.8m houses by 2030, and ensuring ‘zero carbon ready’ new build construction [12]. Concurrently, the government has made a pledge to invest in offshore wind capacity such that every home in the country can be wind powered by 2030 [13].

1.2 Whole-life emissions and emissions budget

Many aspects of residential building retrofit have already been explored within the literature, from financing and governance requirements to the development of various scenario modelling tools to support decision making in the area. Ahlrichs et al. [14] have studied retrofit investment and financial barriers highlighting a need for increased carbon taxes to influence retrofit-related investment decisions. Meanwhile, a recent study of British landlords’ behaviour relating to retrofit activity points at diversifying information channels targeted at landlords. This is seen as a key factor in ensuring policy and financial incentives are adopted despite differing financial means and attitudes among landlords [15]. Decision support studies have also looked at susceptibility of various geodemographic groups of homeowners to invest in retrofit measures [16] and the potential unintended consequences of thermal retrofit resulting in a consumption rebound [17]. Studies in a UK context, have focused particularly on identifying retrofit actions required to meet decarbonisation targets [18, 19] or the potential role

1 for various public and private stakeholders to enable these [20, 21]. However, currently the majority of the UK
2 residential stock retrofit studies focus on operational impacts, largely excluding embodied impacts [22]. There
3 is little research investigating the whole life carbon performance of building stock retrofit, which includes
4 accounting for the embodied carbon emissions from the retrofit measures themselves [22], and it is this research
5 gap that this study is aiming to fill. Moreover, with the current UK housing retrofit rates too low to achieve net
6 zero by 2050 [23], a novel research question arises: what retrofit measures need to be deployed to keep the
7 English residential stock within carbon budgets?
8
9

10 In summary existing knowledge gaps include:

- 11 • understanding of the embodied impacts of retrofit,
- 12 • whole-life carbon performance of various retrofit measures globally, and
- 13 • compatibility of retrofit measures with Paris-compliant national and sectoral emissions budgets.

14 To answer these questions, we scale down the total UK carbon budget into a carbon budget for English
15 residential buildings. The whole life carbon emissions of the English housing stock, including the embodied
16 carbon emissions from retrofit measures and the buildings' operational carbon emissions post-retrofit operation,
17 are then estimated for 2021-2050. Making an assumption that wide-spread residential retrofit is essential, we
18 identify the retrofit measure combinations that meet residential carbon budgets, estimating these budgets using
19 two different interpretations of global to national budget allocations. The results of this study provide insights
20 for decision and policy makers working on retrofit or decarbonisation in the UK, as well as providing broader
21 insights into the potential solutions that drastically decarbonise similarly aged housing stock in similar climates.
22
23
24
25
26
27
28
29
30
31

32 **2 Methodology**

33 This study starts by estimating carbon budgets for the English residential sector from 2021-2050. It then models
34 deployment of a series of retrofit measures across the English housing stock. The whole life carbon emissions
35 of English residential stock retrofit, including both operational emissions and embodied emissions, are
36 estimated. Finally, the combined emissions over the period 2021-2050 are compared against the developed
37 budget to determine the ability of retrofit scenarios to meet the budget or the additional renewables required to
38 accelerate grid decarbonisation in order to meet the pre-set carbon budget.
39
40
41
42
43
44

45 We make a simplifying assumption about the deployment of the retrofit interventions, such that all scenarios
46 considered are immediately deployed at the start of 2021. This represents the maximum energy saving potential
47 of all studied retrofit scenarios. In the real world, the deployment of retrofit interventions takes time and results
48 in lower cumulative energy savings.
49
50
51
52

53 **2.1 Long-term targets and emissions budget**

54 Based on a UK carbon budget developed by the Committee on Climate Change (CCC) [24] and one by the
55 Tyndall Centre [25], we develop two budgets specifically for the English residential building stock, b_p , for the
56 period p following
57
58
59

$$b_p = B_p * F_{be} * F_d * F_e \quad (1)$$

where B_p is the CCC or Tyndall-developed carbon budget for UK for the period p ; F_{be} is the fraction of carbon emissions from UK built environment to UK total carbon emissions, which was around 40% in 2019, including embodied carbon emissions from new construction, operational carbon emissions from existing built assets and direct emissions from transportation [26]; F_d is the fraction of UK residential carbon emissions (including both residential embodied and operational carbon emissions) to the UK built environment carbon emissions (considering embodied and operational carbon emissions of three sectors, namely residential buildings, non-residential buildings and infrastructure), which was 61% in 2010 [27]; F_e is the fraction of England's residential carbon emissions to the UK residential carbon emissions which is calculated based on the prediction of Tyndall carbon budget between that for England and the UK (as shown in 3).

The Tyndall carbon budget is more stringent than the CCC carbon budget, as the Tyndall interpretation of the Paris agreement is that developed nations should be apportioned a smaller proportion of the global carbon budget, with developing nations given a larger share to facilitate their development. In addition, global elements of the budget are also allocated to areas such as land use change, see Anderson et al. [28] and Kuriakose et al. [29] for further details. The CCC carbon budgets cover 5-year periods and are set every five years, with the sixth CCC carbon budget (2033-2037) published in December 2020. The Tyndall carbon budgets also cover five-year periods from 2018 to 2047 with additional budgets covering 2048 to 2100. The total budget from 2021 to 2050 is then disaggregated assuming a linear proportionality across the years during the periods 2018-2022 and 2048-2100 according to equation 2.

$$b_{2021-2050} = \frac{2}{5}b_{2018-2022} + b_{2023-2027} + b_{2028-2032} + b_{2033-2037} + b_{2038-2042} + b_{2043-2047} + \frac{3}{53}b_{2048-2100} \quad (2)$$

Table 1 shows the extracted carbon budgets from CCC and Tyndall for the UK and the scaled budget for the English residential stock. It is worth mentioning that the current indicative path to the UK's net zero target shows the annual GHG emissions will not reach this target before 2050 [30], and the CCC carbon budget for 2033 to 2037 has only just been published [31]. Therefore, our estimated CCC England carbon budget for the period 2021-2050 is likely to be an underestimation. Furthermore, the Tyndall carbon budgets are for carbon dioxide emissions only instead of carbon equivalents. To simplify the comparison of carbon budgets between countries with residential stock of different size, the England residential carbon intensity restriction is also calculated (shown in Table 1), as the England residential carbon budget divided by total floor area nationally, which is around 2.44E+09 m² according to EHS 2012 [32].

With this study focusing on how to successfully mitigate English residential stock's carbon emissions, whilst keeping to the 2050 carbon budget, we only consider the total carbon budget between 2021-2050 as an aggregated benchmark, instead of trying to meet periodic intermediate 5-year targets. The study takes a consumption-based approach [33] to carbon accounting, including the embodied emissions from all materials whether they are produced in the UK or internationally.

16
17
18
19
20
21
22
23
24
25
26
27
28
29
30
31
32
33
34
35
36
37
38
39
40
41
42
43
44
45
46
47
48
49
50
51
52
53
54
55
56
57
58
59
60
61
62
63
64
65

Table 1. Carbon budgets for the UK and England residential sector – note that only Committee on Climate Change (CCC) values are in carbon equivalent

Period	CCC UK carbon budget (MtCO ₂ e)	Tyndall UK carbon budget (MtCO ₂)	Tyndall England carbon budget (MtCO ₂)	F_e the fraction of England's residential carbon emissions to the UK residential carbon emissions	England residential carbon budget		England residential carbon intensity restriction	
					CCC (MtCO ₂ e)	Tyndall (MtCO ₂)	CCC (MtCO ₂ e/m ²)	Tyndall (MtCO ₂ /m ²)
2018-2022	2544	1456.9	1175.6	80.7%	500.9	286.8	205.60	145.92
2023-2027	1950	741.0	599.6	80.9%	385.0	146.3	158.04	74.22
2028-2032	1725	366.3	297.3	81.2%	341.6	72.5	140.23	36.69
2033-2037	965	181.3	147.7	81.5%	191.8	36.0	78.74	18.16
2038-2042	/	89.9	73.5	81.8%	/	17.9	/	9.00
2043-2047	/	44.9	36.9	82.2%	/	9.0	/	4.50
2048-2100	/	44.4	36.8	82.9%	/	9.0	/	4.45
2021-2050	4692.6	2008.7	1627.3		1118.8	397.1	459.2	201.2

2.2 Retrofit scenarios

We consider four main types of retrofit measures in this study: wall insulation, glazing replacement, PV modules and heating system upgrades. They are applied individually and combined. In the combined retrofit measures, only double glazing is considered due to its higher financial effectiveness in retrofitting UK residential dwellings when compared with triple glazing [34]. The retrofit scenarios considered in this study are detailed in *Table 2*.

Table 2. Retrofit scenarios and the description of the interventions modelled for the stock.

Retrofit Scenario	Description
BL	Baseline (BL), no retrofit, the stock stays as it is currently without upgrade.
PV	Add photovoltaic (PV) modules on all buildings with available roof space for PV. The PV modules are assumed to be installed on 30% of all available building roof space, with an efficiency of 20% for electricity generation. All PV has an encumbered view of the sky according to the orientation of the building.
CI	Cavity insulation (CI) applied to all buildings with cavity walls where no previous cavity wall insulation is installed to achieve a post retrofit U-value of 0.1 W/(m ² ·K) .
EI	External insulation (EI) applied to all buildings with solid walls where no previous external wall insulation is installed, to achieve a post retrofit U-value of 0.1 W/(m ² ·K) .
II	Internal insulation (II) applied to all buildings of any wall type where no previous internal wall insulation was installed, to achieve a post retrofit U-value of 0.1 W/(m ² ·K).
DG	Replace windows in homes where the glazing U-value is greater than 3 W/(m ² ·K) to double glazing (DG) with U-value of 1.6 W/(m ² ·K).
TG	Replace windows in homes where the glazing U-value is greater than 2 W/(m ² ·K) to triple glazing (TG) with U-value of 0.8 W/(m ² ·K) .
GSHP	Switch to ground source heat pump (GSHP) with seasonal Coefficient of performance (COP) of 3 if outdoor space is available and the current heating system efficiency is less than 100% or uses community heating.
ASHP	Switch to air source heat pump (ASHP) with seasonal COP of 2.5 ¹ if the current heating system efficiency is less than 100% or uses community heating.
HBHP	Switch to hybrid heat pump (HBHP) with 50:50 split of heating supply between ASHP (COP2.5) and condensing gas boiler, where the current heating system efficiency is less than 100% and the house is connected to the gas network.
AWI	All Walls Insulated (AWI). Apply CI, EI, and II sequentially to all the stock with the same rules as above. No individual home receives more than a single insulation measure to achieve a post retrofit U-value of 0.1 W/(m ² ·K) for the treated walls. Many homes which were not classified as simple CI or EI suitable homes and have mixed wall and layout types will result in non-uniform application of insulation measures resulting in a higher than 0.1 W/(m ² ·K) for the dwelling.
AWI+DG+ASHP	Combining the all wall insulation, glazing and heating system switch to air source heat pump
AWI+ASHP	or hybrid heat pump as per the listed combinations, the measures are applied to the stock as
AWI+DG	per their individual rules.
DG+ASHP	
AWI+HBHP	
DG+HBHP	
AWI+DG+HBHP	

¹ In practice heat pumps vary significantly in operational performance (seasonal COP of 1.5 to 4.5 for ASHPs), due to installation quality, product performance and maintenance [35] Lowe R, Summerfield A, Oikonomou E, Love J, Biddulph P, Gleeson C, et al. Final report on analysis of heat pump data from the renewable heat premium payment (RHPP) scheme https://assets.publishing.service.gov.uk/government/uploads/system/uploads/attachment_data/file/606818/DECC_RHPP_161214_Final_Report_v1-13.pdf; 2017, [35] *ibid.*. This variation in COPs is much greater than the variance in boiler efficiency, resulting in a greater variance in energy demand.

1 The post retrofit U-value for wall insulation is set to 0.1 W/(m²·K) as the most energy efficient retrofit solution.
2 It exceeds the requirements of the current maximum requirement of UK building regulations, part L1B of 0.3
3 W/(m²·K) [36] and EnerPHit building retrofit standard, which ranges from 0.12-0.30 W/(m²·K) in the UK [37],
4 but still proved to be feasible for a 1960s housing estate with solid walls [38]. The various measures under
5 consideration are applied to the building stock in such a way that the definition of the measure and the homes
6 to which it could be applied are explicitly programmed. For example, cavity wall insulation is defined as
7 providing a U-value of 0.1 W/(m²·K) after installation and is only applied to homes with cavity walls currently
8 without cavity insulation. The National Household Model then searches the stock for suitable homes and applies
9 the measure as defined. *Table 3* provides information on the aggregate scope of each scenario when applied to
10 all eligible stock across the nearly 25m units available to retrofit.
11
12
13
14
15
16
17
18
19
20
21
22
23
24
25
26
27
28
29
30
31
32
33
34
35
36
37
38
39
40
41
42
43
44
45
46
47
48
49
50
51
52
53
54
55
56
57
58
59
60
61
62
63
64
65

16
17
18
19
20
21
22
23
24
25
26
27
28
29
30
31
32
33
34
35
36
37
38
39
40
41
42
43
44
45
46
47
48
49
50
51
52
53
54
55
56
57
58
59
60
61
62
63
64
65

Table 3. Retrofit measures deployment scope across the eligible English housing stock.

Retrofit Scenario	PV module area (m ²)	Wall insulation total applied area (m ²)			Glazing replacement total applied area (m ²)		Annual generated thermal energy for domestic space heating from the retrofitted heating system (kWh _t)		
		Cavity	External	Internal	Triple glazing	Double glazing	GSHP	ASHP	Boiler
PV	3.89E+08								
CI		9.52E+08							
EI			6.36E+08						
II				1.65E+09					
TG					4.06E+08				
DG						1.12E+08			
GSHP							1.90E+11		
ASHP								2.07E+11	
HBHP								9.25E+10	9.25E+10
AWI		9.52E+08	6.36E+08	5.90E+07					
AWI+DG+ASHP		9.52E+08	6.36E+08	5.90E+07		1.12E+08		1.37E+11	
AWI+ASHP		9.52E+08	6.36E+08	5.90E+07				1.42E+11	
AWI+DG		9.52E+08	6.36E+08	5.90E+07		1.12E+08			
DG+ASHP						1.12E+08		2.03E+11	
AWI+HBHP		9.52E+08	6.36E+08	5.90E+07				5.46E+09	5.46E+09
DG+HBHP						1.12E+08		9.06E+10	9.06E+10
AWI+DG+HBHP		9.52E+08	6.36E+08	5.90E+07		1.12E+08		4.39E+09	4.39E+09

2.3 Modelling operational carbon

2.3.1 National Household Model

1
2 The National Household Model (NHM) is an open-source modelling tool developed for the UK Department
3 of Business Energy and Industrial Strategy [39]. The model (v 7.2.2 used in this study) brings together the
4 standard monthly building energy assessment calculation methods with the representative UK residential
5 building stock. The energy assessment models available are the Standard Assessment Procedure (SAP) and
6 Building Research Establishment Domestic Energy Model (BREDEM), which are closely related in terms of
7 being monthly energy balance methods and SAP having been derived from BREDEM to fulfil the role of the
8 National Calculation Model for the UK to conform to the EU Energy Performance of Buildings Directive [40,
9 41]. For the purposes of calculating operational carbon, here, we use the BREDEM 2012 energy calculator.

10
11 The NHM requires building stock data and has been designed to take English Housing Survey (EHS) data as
12 a primary building stock. For the purposes of this analysis, we use data from the EHS 2012 [32]. Although the
13 NHM has the capability to perform scenario modelling over time, with programmable interventions and
14 changes to the building stock, the operational carbon calculations in this analysis are done over one calendar
15 year with all interventions implemented on the first day of the model run. This is because we are primarily
16 interested in investigating the combined embodied and operational carbon implications of retrofit measures
17 and a deploy-all-first approach represents the most favourable approach in minimizing accumulating
18 operational emissions in the absence of practical constraints. At-the-meter energy consumption of the stock as
19 a whole is modelled before and after intervention measures in order to assess the impact of installing each
20 intervention. The detailed NHM energy consumption results of different scenarios and a brief discussion of
21 the results can be found in the SI. The energy demand by fuel from all energy vectors was also collected to
22 gain an accurate picture of the operational carbon resulting from the intervention measure.

23
24 The annual energy consumption of the whole English housing stock after undertaking different retrofit
25 measures is presented in Figure 1. The detailed data can be found in the SI.
26
27
28
29
30
31
32
33
34
35
36
37
38
39
40
41
42
43
44
45
46
47
48
49
50
51
52
53
54
55
56
57
58
59
60
61
62
63
64
65

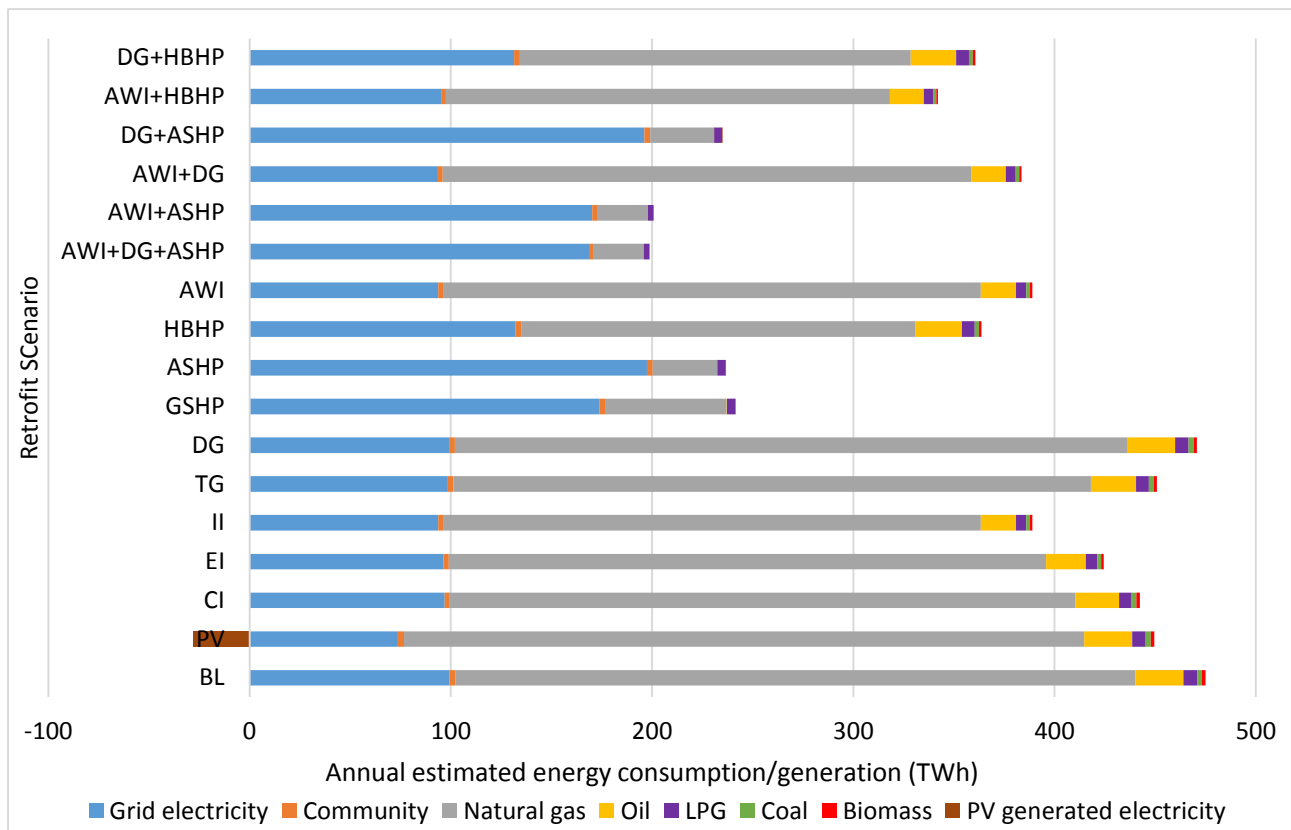


Figure 1. The energy consumption of the English house stock under different retrofit scenarios

2.3.2 Grid emissions and decarbonisation scenarios

To arrive at emissions related to residential consumption we need to assume a carbon intensity for the national grid in the period 2021-2050. From 2008 to 2019, the carbon emissions from the power sector fell by 67% with the decarbonisation of the power sector dominating the UK carbon emissions fall for the last decade [30]. However, the power sector needs to be further decarbonised to achieve the net zero carbon emissions target. In this study, the effect of grid decarbonisation on the carbon emission factor of electricity is explored by initially considering six future grid decarbonisation scenarios based on the analysis of Committee on Climate Change and that of the national grid:

S1: In 2019, the electricity carbon emissions for the UK were 200 gCO₂/kWh [42]. According to the analysis and targets set by the CCC [3], the grid carbon emissions are assumed as 50gCO₂ /kWh in 2030 and 10gCO₂ /kWh in 2050. Interpolation is used to calculate the grid carbon emissions of other years in-between, with a constant decarbonisation pace assumed between 2019-2030 and 2030-2050.

S2 to S5: The national grid [43] has developed a set of four future energy scenarios with different CO₂ intensities of electricity generation, namely consumer transformation (S2), system transformation (S3), leading the way (S4) and steady progression (S5). The three scenarios, S2-S4, all rely on bioenergy with carbon capture and storage (CCS) and achieve negative emissions prior to 2050.

S6: In the Committee on Climate Change’s sixth carbon budget [31], a balanced net zero pathway for electricity generation was developed, which very largely decarbonises electricity generation by 2030, and decarbonises it completely by 2035. Actions thereafter focus on meeting rising demand with low-carbon generation.

These grid carbon emissions scenarios only account for direct CO₂ emissions. In this paper, we make adjustments to include all GHG emission in the grid emissions. By assuming the ratio between grid emitted GHG and CO₂ remains constant at its 2017 value of 1.008 [44], the emission factor of electricity accounting for all GHG is calculated following:

$$OC_{e,y} = G_{CO_2,y} * 1.008 \quad (3)$$

$OC_{e,y}$ is the carbon emission factor of electricity in year y in gCO₂e/kWh; $G_{CO_2,y}$ is the grid carbon emissions considering only CO₂ in year y measured in gCO₂/KWh. The grid carbon emissions of all scenarios from 2019 to 2050 are presented in *Figure 2*. The grid carbon emissions in 2019 are lower for national grid scenarios (S2 to S5) as the analysis of the national grid ignores network and operability constraints on the transmission or lower voltage networks [45].

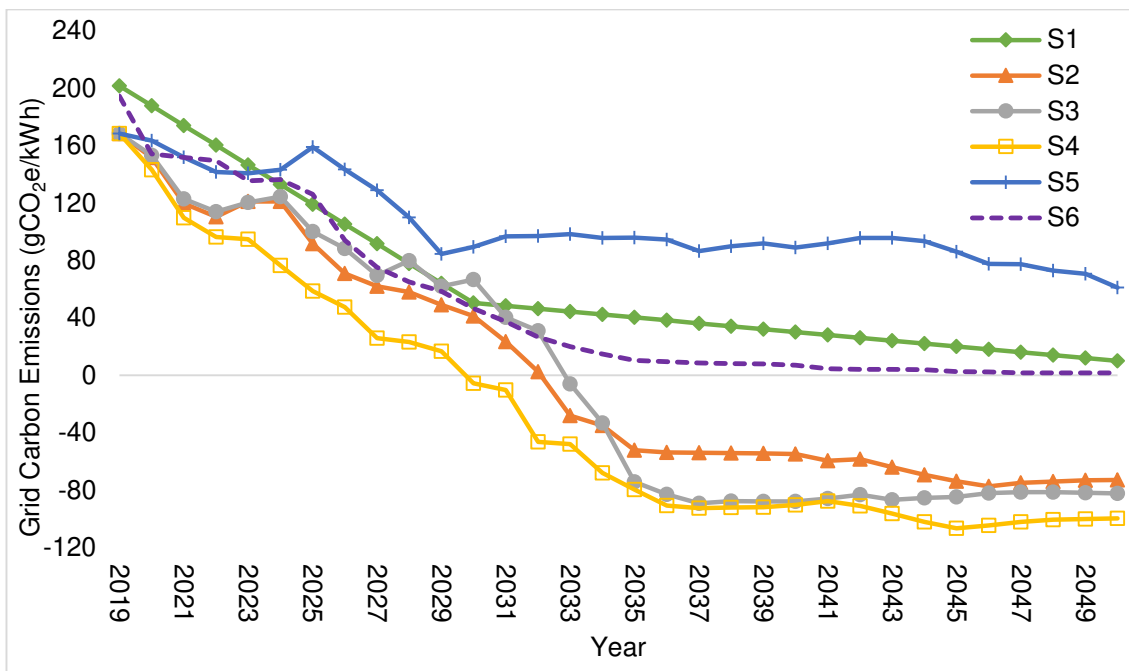


Figure 2. Future grid carbon emissions for all scenarios

Since a successful and scalable deployment of CCS before 2050 could ensure a net zero transition almost independently from other available interventions, we will only use scenarios S1, S5 and S6 in our grid emissions results moving forward. Results from the other three future grid carbon emissions scenarios can be accessed in the supplementary material. It is also worth considering, given current progress on CCS scalability and deployment, that CCS mass deployment is an unlikely scenario before 2050 [46].

2.3.3 Operational carbon

Finally, the total annual operational carbon emissions for 2021-2050, O , is then calculated based on the operational energy consumption after:

$$O = \sum_{2021}^{2050} O_y = \sum_{2021}^{2050} [(M_e + P) \times OC_{e,y} + M_g \times OC_g + M_o \times OC_o + M_l \times OC_l + M_c \times OC_c + M_m \times OC_m + M_b \times OC_b] \quad (4)$$

where M is the annual consumption of a specific fuel in kWh; P is the annual photovoltaic electricity generation fed back to grid in kWh; OC is the carbon emission factor of a specific fuel in gCO₂e/kWh, with the subscript $e, g, o, l, c, m,$ and b standing for electricity, natural gas, oil, LPG, coal, community, and biomass, respectively. The values for OC are taken as $OC_g = 184, OC_o = 247, OC_l = 214, OC_c = 345, OC_m = 50, OC_b = 16$ [44, 47]. Although in the future, more sustainable fuels, e.g. biogas, hydrogen might be able to replace some portion of the carbon intensive fossil fuels currently consumed within residential stock, the approach taken in this study, using the NHM model is based on SAP methodology, which utilises present-day energy vectors and does not take direct account of innovative fuels such as biogas and hydrogen. As such, the implications of these fuels are excluded from the analysis, both in terms of residential demand, as well as, implications such as additional grid generation for fuel production. Therefore, constant carbon emission factors are assumed for natural gas, oil, LPG, coal, community and biomass between 2021 and 2050.

2.4 Embodied carbon calculation

Embodied carbon measures greenhouse gas emissions during the non-operational phase and as such includes emissions released through extraction, manufacture, transportation, assembly, maintenance, replacement, deconstruction, disposal, and end-of-life aspects of the materials and systems that make up a building [48]. The scope of embodied emissions in this study covers cradle-to-gate, i.e., A1-A3 embodied carbon [49]. This essentially covers the supply-chain up to the point that construction products are ready for use at the factory gate.

2.4.1 Retrofit embodied carbon

Insulation: We consider three types of wall insulation in this study. These are solid wall external insulation, internal insulation and cavity wall insulation. Thirteen different insulation materials have been considered in this study to estimate mean embodied emissions across available options. (See SI for the characteristics of the individual insulation materials used.) The thickness of insulation material to meet the required U-value specified in *Table 2* is calculated using

$$\delta = \lambda \times (1/U_b - 1/U_a) \quad (5)$$

where U_b and U_a are the thermal transmittance of the wall before and after the retrofit in W/(m²·K); δ is the thickness of chosen insulation material in meters; and λ is the thermal conductivity of chosen insulation material in W/(m·K). The embodied carbon of wall insulation, E_w , can then be calculated following

$$E_w = \delta \times A_w \times D \times EC_w \quad (6)$$

where A_w is the total area of retrofitted wall in m^2 , see *Table 3*; D is the density of the chosen insulation material in kg/m^3 ; and EC_w is the cradle-to-gate embodied carbon intensities of the insulation measured in $kgCO_2e/kg$.

Glazing: We consider double and triple glazing as the two types of market available retrofit measures for openings. The embodied carbon of window replacement, E_d , is calculated following

$$E_d = EC_d \times A_d \quad (7)$$

where A_d is the retrofitted window area in m^2 and EC_d is the cradle-to-gate embodied carbon intensities of the replaced window taken as $32.5 \text{ kgCO}_2e/m^2$ for double glazing and $52.4 \text{ kgCO}_2e/m^2$ for triple glazing, respectively [50].

Heat pump and boiler: In the UK, governmental renewable heat schemes like Domestic Renewable Heat Incentive (RHI) have historically promoted the deployment of heat pumps [51]. Air source, ground source, and hybrid heat pumps, i.e., combined air source heat pump and condensing gas boiler, are considered to replace existing boilers in eligible stocks. The embodied carbon of heating system replacement, E_h , is calculated through

$$E_h = EC_h \times T_h + EC_b \times T_b \quad (8)$$

where EC_h is the cradle-to-gate embodied carbon intensities of heat pump in $kgCO_2e/kWh$; T_h is the thermal energy generated by heat pumps for residential space heating and hot water in kWh ; EC_b is the cradle-to-gate embodied carbon intensities of condensing gas boilers in $kgCO_2e/kWh$; and T_b is the thermal energy generated by boilers for residential space heating and hot water measured in kWh . Based on a study by Greening and Azapagic [52], assuming that 95% of global warming potential (GWP) impact is from the operational energy consumption, the life cycle embodied carbon intensities of air source heat pumps, ground source heat pumps and condensing gas boilers are taken as $0.014kgCO_2e/kWh$, $0.009kgCO_2e/kWh$, and $0.015kgCO_2e/kWh$, respectively. Including extraction and processing of fuels and raw materials; system manufacture; installation; maintenance; decommissioning and transportation for heat pumps, as well as extraction and processing of fuels and raw materials; boiler manufacture; decommissioning and transportation for boiler. Given that these values include emissions beyond cradle-to-gate, such as installation and disassembly, our values for these components are likely to lead to a slight overestimation of their cradle-to-gate embodied carbon.

Photovoltaics: We calculate the embodied carbon of the PV modules, E_p , following

$$E_p = EC_p \times A_p \quad (9)$$

where A_p is the area of PV modules installed in m^2 and EC_p is the cradle-to-gate embodied carbon intensities of PV modules taken as $242 \text{ kgCO}_2/m^2$ for monocrystalline PV modules, $208 \text{ kgCO}_2/m^2$ for polycrystalline PV modules, and $67 \text{ kgCO}_2/m^2$ for thin-film PV modules [50]. The embodied carbon intensities of PV modules only accounts for CO_2 instead of all GHG meaning the overall embodied carbon of PV modules are generally underestimated.

3 Results and discussion

3.1 Whole-life carbon emissions from retrofit

The embodied carbon emissions of applying the aforementioned retrofit measures for all suitable residential buildings in the English housing stock is presented in *Figure 3*. The error bars for embodied emissions account for the variation in material for insulation and PVs, as more than one material and one type of PV module are considered. It is clear that retrofit scenarios which include installation of insulation, especially external and internal insulation, can have a wide range of embodied emissions highlighting the importance of material selection. For example, when using wood fibre as insulating material, real-terms emission saving can be achieved as a result of the overall sequestration of carbon within the product.

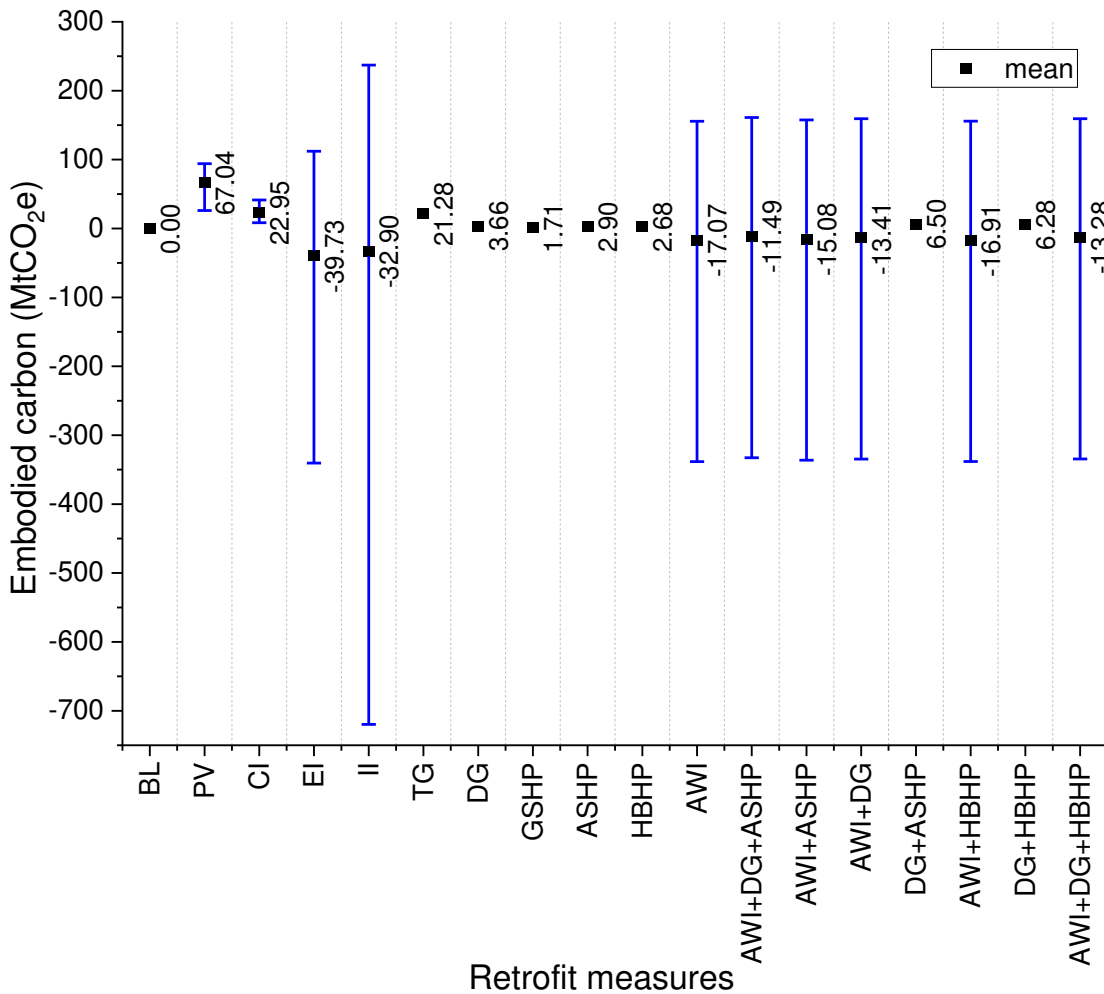


Figure 3. Embodied carbon emissions of different retrofit scenarios

Figure 4, shows the corresponding operational carbon emissions over a 30-year period up to 2050 and how these operational emissions relate to the Tyndall and CCC carbon budgets, assuming that all the measures were undertaken at the beginning of 2021 and that the grid decarbonises at three different rates/scenarios. The measure that has the biggest impact on operational carbon emissions, while applied on its own, is the ASHP. However, this has to be combined with insulation measures, AWI+DG+ASHP and AWI +ASHP under S6, to

meet the strictest Tyndall carbon budget. When compared with the baseline of undertaking no retrofit at all, the operational carbon emissions savings of all retrofit scenarios considered range from 1% for DG to 81% for AWI+DG+ASHP under S1 grid decarbonisation scenario, 1% to 72% under scenario S5, and 1% to 84% under scenario S6. What is crucial to note, is that, without a mass deployment of air or ground source heat pumps, the 30-year operational carbon emissions from any of the retrofit scenarios would exceed both CCC and Tyndall carbon budgets.

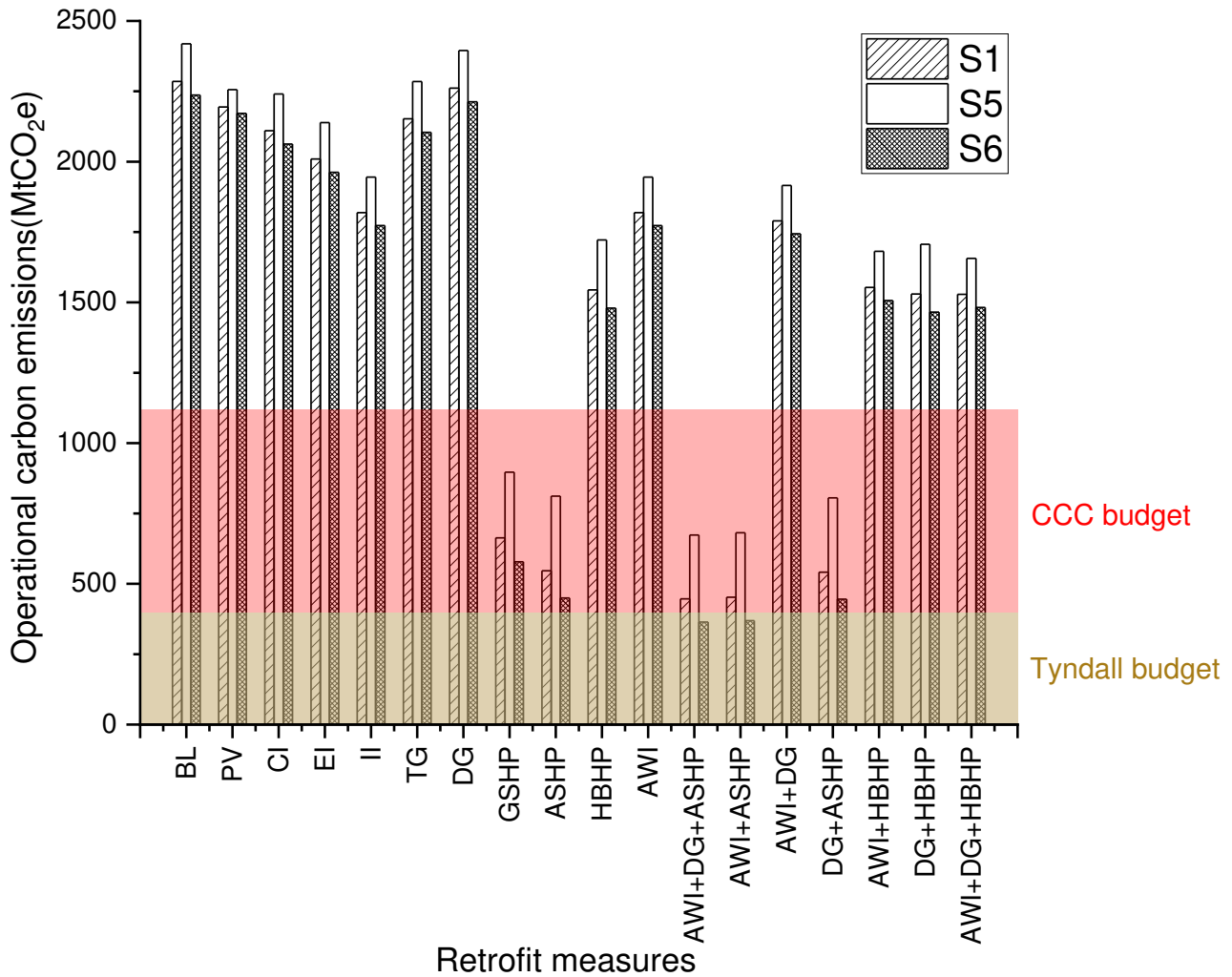


Figure 4. 30 years (2021-2050) operational carbon emissions of different retrofit scenarios – highlighted regions show the CCC and Tyndall budgets between 2021-2050.

Compared with the 30 years of post-retrofit operational carbon emissions, however, the mean embodied carbon emissions from retrofit measures are almost negligible. Under S1, S5 and S6, the carbon payback of applying various retrofit measures is presented in Table 4, apart from PV, all scenarios achieved carbon reduction through retrofit within 5 years, while many of them emit less carbon compared to the baseline from the first year. The carbon payback for PV modules is over 10 years, and it is not able to payback at the end of our study period (30 years from 2021 to 2050) under the S6 grid decarbonisation scenario. It is of interest to note that both double

glazing and triple glazing can achieve carbon payback within 5 years when applied alone. Although the cradle-to-gate embodied carbon intensities for triple glazing are 1.6 times that of double glazing, the triple glazing achieved bigger energy savings as more properties can accommodate this upgrade.

Table 4. The carbon payback time [unit: year(s)]

Retrofit scenario	S1	S5	S6
PV	13	10	>30
CI	4	4	4
EI	1	1	1
II	1	1	1
TG	5	5	5
DG	5	5	5
GSHP	1	1	1
ASHP	1	1	1
HBHP	1	1	1
AWI	1	1	1
AWI+DG+ASHP	1	1	1
AWI+ASHP	1	1	1
AWI+DG	1	1	1
DG+ASHP	1	1	1
AWI+HBHP	1	1	1
DG+HBHP	1	1	1
AWI+DG+HBHP	1	1	1

As mentioned, the selection of low environmental impact materials and systems in retrofit can significantly reduce embodied carbon emissions, as is the case with the external and internal wall insulation. Considering total whole-life carbon emissions, as shown in Figure 5, careful selection of materials and systems used in retrofit provides a greater chance to meet stricter carbon budgets. However, there must also be a focus on ensuring the materials perform well in situ, i.e. to reduce the performance gap [53].

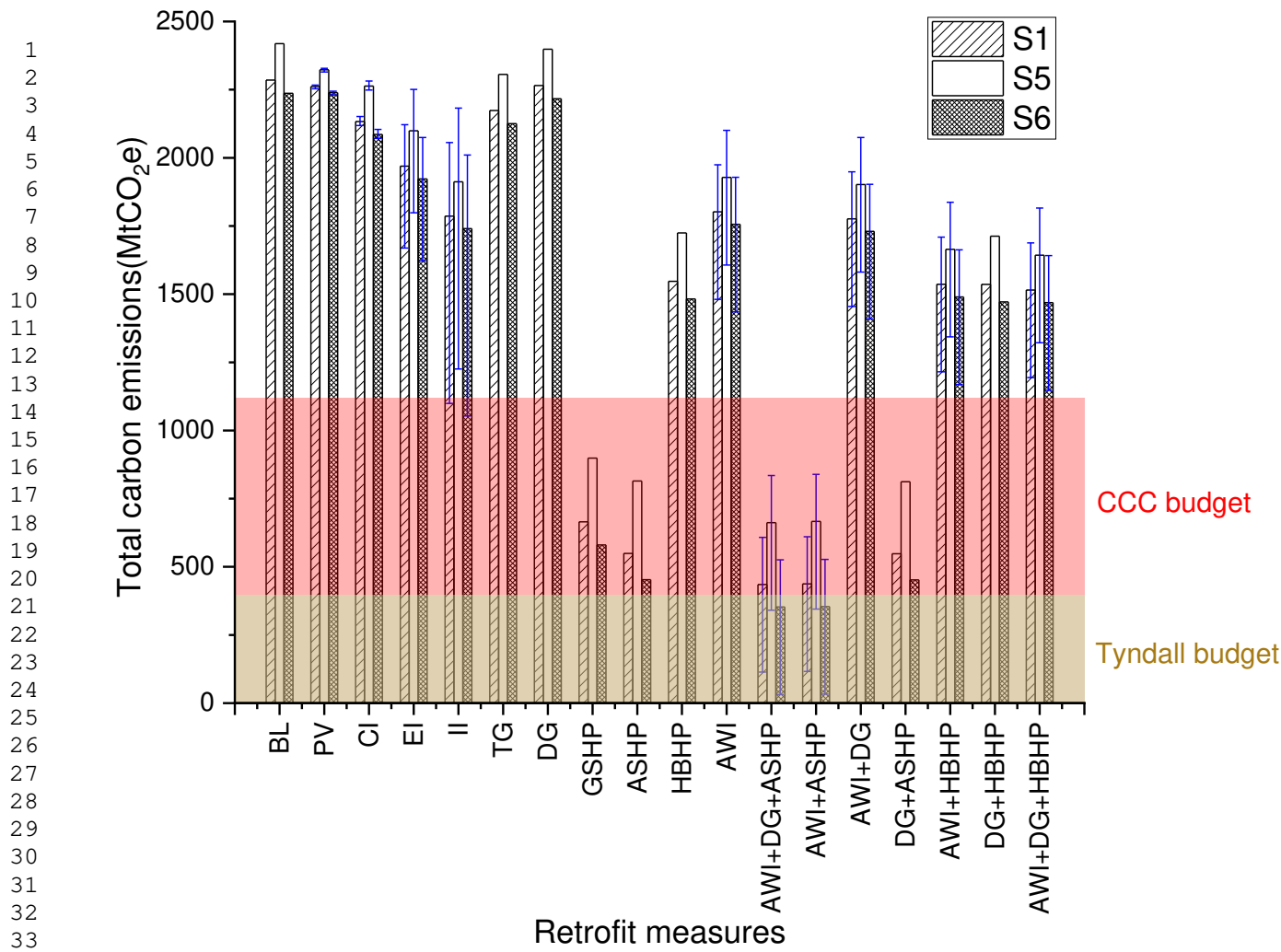


Figure 5. 30 years (2021-2050) total embodied and operational carbon emissions when considering different retrofit measures and grid decarbonisation scenarios for English residential stock – note that heat pumps are the only way that the budgets can be met with the Tyndall budget requiring careful selection of insulation material across the entirety of the stock.

3.2 England’s house stock carbon emissions in 2050

The English housing stock will play a key role on whether net zero emissions can be achieved in the UK by 2050. The operational carbon emissions per annum in 2050 for different grid decarbonisation scenarios and retrofit combinations are presented in Figure 6, by using electricity carbon emission factors in 2050. Based on the stock operational energy prediction results from NHM, the English housing stock is not likely to achieve net zero carbon emissions by 2050 through building retrofit measures alone, even when considering non-transformational grid decarbonisation. Achieving net zero in 2050 therefore likely requires both retrofit, complete electrification of cooking, successful deployment of CCS technologies and a massive increase in renewables capacity, likely to be wind, by 2050.

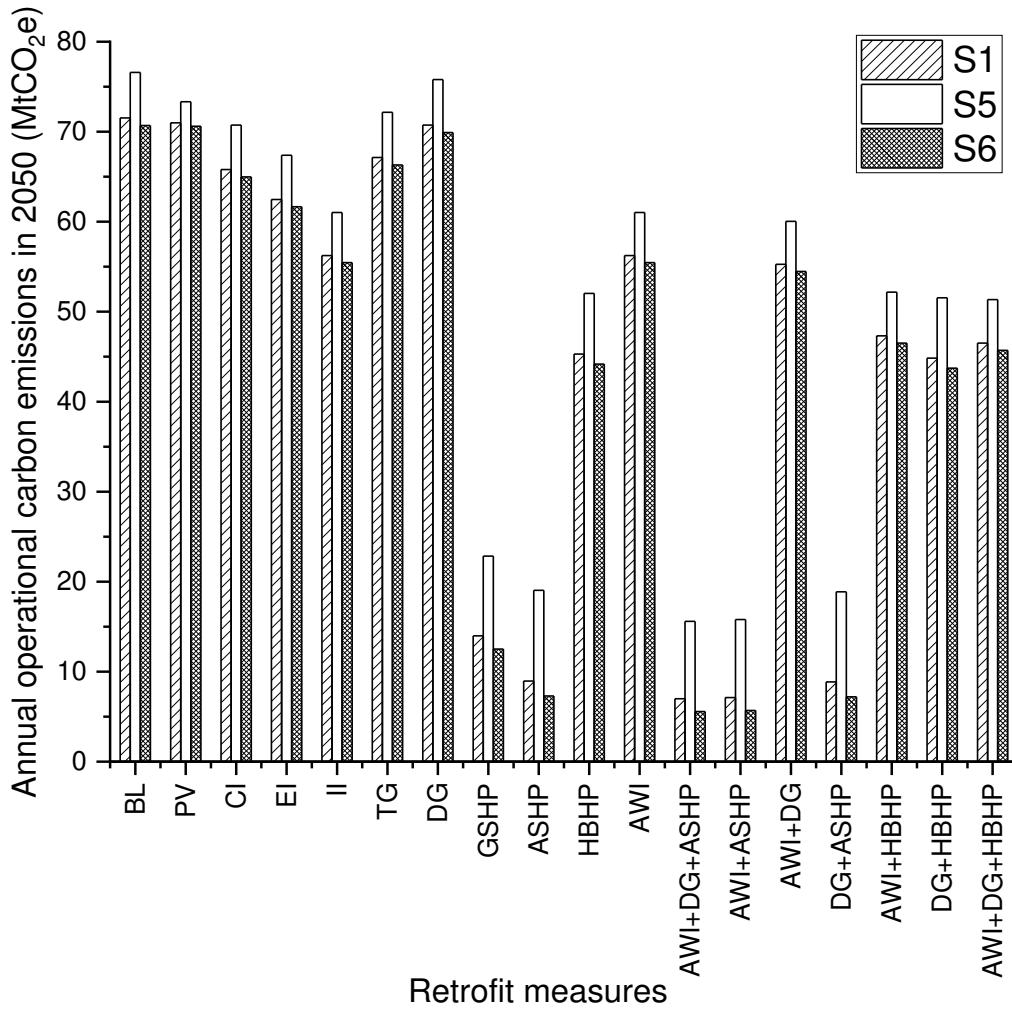


Figure 6. Operational carbon emissions in 2050 (one year) for different grid decarbonisation and retrofit scenarios.

3.3 Additional wind capacity to meet carbon budget

UK wind capacity has continuously increased from 5.4 GW in 2010 to 24 GW in 2019. By 2019, wind made up the UK's second largest source of electricity [54]. Current ambitious plans to power all UK homes with wind by 2030 could theoretically provide carbon reduction benefits as well [55]. According to Smoucha and Fitzpatrick [56], an onshore 2 MW turbine with annual electricity generation of 4520 MWh has 787 tCO₂e of embodied carbon emissions from the manufacturing stage. Under S1, S5 and S6 grid scenarios, a 2 MW turbine achieves net carbon reduction at the end of the 2nd year. Whilst a 30-year operation provides for an emissions offset of 6929 tCO₂e, 13007 tCO₂e and 4721 tCO₂e, respectively, when compared with the grid electricity. This we use to estimate the wind capacity required to meet Tyndall carbon budget targets.

For all the retrofit scenarios considered in this study, among those failing to meet the Tyndall carbon target, DG+ASHP has the lowest total carbon emissions. After the retrofit interventions, the 30-year total carbon emissions from the English housing stock (from 2021 to 2050) are 150.88 MtCO₂e, 414.79 MtCO₂e and 54.99 MtCO₂e over the Tyndall carbon target under S1, S5 and S6 scenarios, respectively. To help meet the Tyndall

carbon target, 21,776, 31,890 and 11,650 2MW turbines need to be installed in 2021 depending on the grid scenario. The accumulated carbon emissions from the stock after DG+ASHP retrofit and accumulated carbon reductions from the wind turbines from 2021 to 2050 are presented in Figure 7.

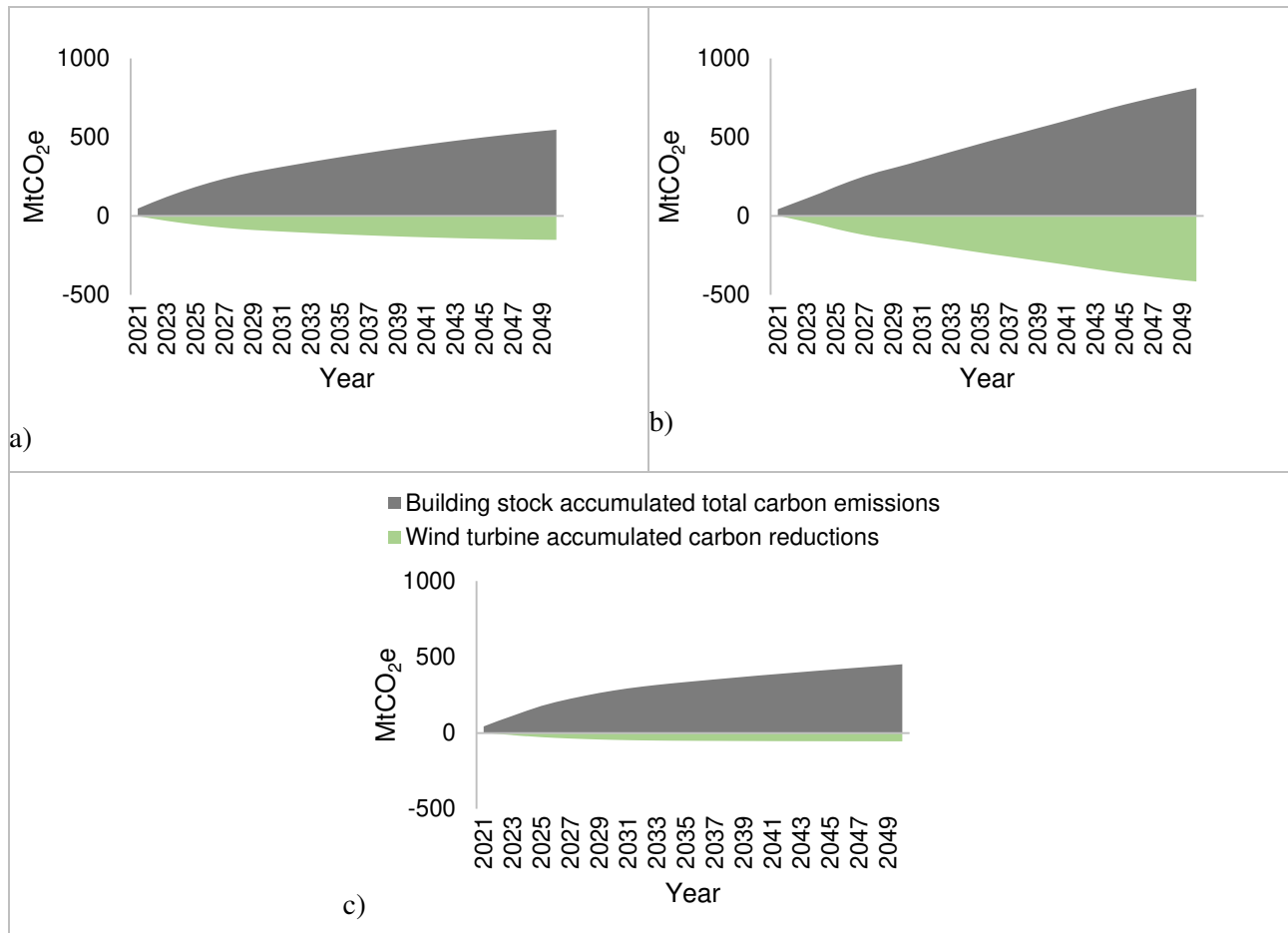


Figure 7. The carbon emissions from English house stock after DG+ASHP retrofit and carbon reduction from wind turbines between 2021 and 2050 under S1 (a), S5 (b) and S6 (c)– the accumulated carbon reduction from wind turbines are assigned with negative values to offset the accumulated carbon emissions from the stock.

With the installation of enough wind turbines, the Tyndall carbon target can be achieved. However, deploying the equivalent capacity of up to nearly 32 thousand 2 MW wind turbines would pose practical challenges to load management in the national grid, and construction challenges to deliver this level of capacity. More generally, our results highlight mass deployment of heat pumps to be fundamental when trying to meet carbon targets for the residential stock in England. This on its own means that the electrification of residential demand is crucial in meeting targets. The increase of electricity demand for space heating ranges from 1.76 TWh to 82.72 TWh in 9 out of 18 retrofit scenarios utilizing heat pumps, i.e. 0.5% to 23.9% of the total UK electricity

1 demand in 2019 [57], which is in itself a challenge to grid supply balance and grid decarbonisation in the UK
2 [58].
3
4

5 **3.4 Limitations**

6 The embodied carbon calculated here covers only cradle-to-site (A1-A3) unless otherwise specified. This means
7 our embodied carbon estimates, while low, do not include the emissions associated with the construction process
8 stage (A4-A5), use stage (B1-B7), and end of life stage (C1-C4) of the retrofit interventions [59]. Moreover, we
9 have not considered circumstances under which retrofit interventions might require replacement during the 30-
10 year study period of 2021-2050. Depending on the working environment and the service life of the specific
11 retrofit materials and PV modules used, they may need to be replaced. The embodied carbon emissions of retrofit
12 materials and PV modules in this study are, as such, likely to be underestimated.
13
14

15 During the NHM simulations, fixed regionally specific weather profiles were used to calculate the annual energy
16 consumption of the English housing stock without considering the potential impacts of climate change. The
17 monthly climatic conditions are taken from the SAP2012 (Appendix U) regional values and were considered
18 not to change from year to year. With the progress of global warming, the residential energy consumption
19 structure will switch from space heating to space cooling, leading to higher space cooling loads and lower space
20 heating loads compared to SAP2012 weather data. We have utilized a constant annual operational energy
21 consumption for 30 years, although the energy saving efficiency of retrofit interventions tends to decrease over
22 time due to factors such as system degradation and occupant behaviour [60]. These would potentially lead to
23 stricter requirements for building retrofit carbon efficiency in order to meet the carbon budgets.
24
25

26 The NHM model also makes in-built assumptions regarding the types of PV modules which result in an
27 electricity generation efficiency of 20%. In reality, the efficiency of different modules as deployed may differ,
28 with the efficiencies of monocrystalline, polycrystalline and thin-film PV panels ranging between 10% to 22%
29 [61]. The embodied carbon emissions of the PV retrofit scenario is likely to be underestimated as we only
30 accounted for PV modules, while a house-integrated PV system have other components, such as inverter and
31 batteries.
32
33

34 For all retrofit scenarios including wall insulation measures, a U-value of 0.1 W/(m²·K) is assumed to have been
35 achieved after retrofit, which as stated in section 2.2 is stricter compared to the current standard requirement.
36 Such low U-values may not be feasible to achieve due to their high cost and the space they would physically
37 require to be installed. This would lead to a higher post retrofit U-value and a smaller operational carbon
38 reduction compared to our estimates.
39
40

41 The above-mentioned limitations are likely to result in an underestimation of whole life carbon emissions of the
42 building stock, which in turn makes meeting the carbon targets even more challenging in practice. As the results
43 of the study show, even immediate residential stock retrofit deployment requires combined retrofit actions to
44 meet carbon budgets. The retrofit challenge will increase exponentially with delays in deployment.
45
46
47
48
49
50
51
52
53
54
55
56
57
58
59
60
61
62
63
64
65

1
2
3
4
5
6
7
8
9
10
11
12
13
14
15
16
17
18
19
20
21
22
23
24
25
26
27
28
29
30
31
32
33
34
35
36
37
38
39
40
41
42
43
44
45
46
47
48
49
50
51
52
53
54
55
56
57
58
59
60
61
62
63
64
65

Finally, the carbon budget projection in this study is based on the historical proportions of carbon emissions from residential stock. Depending on the difficulty of carbon reduction in different sectors, the carbon budget assigned to residential stock might be higher or lower than what is estimated here.

4 Conclusions and Policy Implications

By combining the operational carbon calculated and cradle-to-gate embodied carbon of retrofit materials and systems in this study, we have investigated the whole-life carbon performance of retrofit measures in the whole English house stock. The results are compared with carbon targets to support retrofit policy making in achieving net zero emissions without overspending the emissions budget. At our current emissions rate, we have shown England's homes to have produced somewhere over 2200 MtCO_{2e} by 2050. This leads to surpassing the CCC and Tyndall carbon budget by over 1100 MtCO_{2e} and over 1800 MtCO_{2e} respectively under S1, S5 and S6. We have also shown that even under large-scale residential retrofit scenarios, total emissions consistently overshoot the 2050 carbon budget, except for those aggressively deploying heat pumps and thus electrifying heating. Given our implicit assumption that all retrofit measures have already been implemented at the start of 2021, the following policy recommendations are critical to achieve net zero by 2050 within in the residential sector:

1. Rapidly increased heat pump deployment, without the current planned delays until 2028. Given nearly 20 million homes in England alone are eligible for heat-pumps, installing at the pace of current targets, i.e., achieving a deployment rate of only 600 thousand heat pumps annually by 2028, will require an additional 25 years after 2028 before every home is converted.
2. Carefully select materials to retrofit building envelopes to drive down the embodied carbon emissions from retrofit, whilst reducing the heating demand to maintain a comfortable indoor environment. Thus, leading to less electricity consumption during operation and lower electricity bills for heating when switched to heat pump systems.
3. Current targets for offshore wind are insufficient to achieve net zero carbon by 2050 and need to be made more ambitious. Our estimates suggest deployment of over 11 thousand additional 2 MW wind turbines in the beginning of 2021 is required in tandem with the nationwide installation of heat pumps and double glazing in order to meet the Tyndall carbon budget for the English house stock.

Measures 1 and 2 need to be deployed across all homes, creating challenges in financing, and incentivising what can be disruptive retrofits. Thus, there is a need to increase awareness about the potential energy/carbon/cost savings, from residential retrofit, in addition to the thermal comfort benefits. Attractive financing options will need to be provided to enable all homeowners to undertake retrofits given their key role in delivering widespread decarbonisation, and these need to be made available near immediately given the pace of change we have shown is required to meet carbon budgets. Measure 3 is in some respects simpler in that it is not at the mercy of millions of individual homeowners, but the need is no less urgent and requires significant government investment and leadership.

Acknowledgements: This research is financially supported by EPSRC Active Building Centre program of work [EP/S016627/1, EP/V012053/1], and EPSRC UKCRIC-CORONA: City Observatory Research Platform for Innovation and Analytics [EP/R013411/1]. EPSRC had no involvement in study design; in the collection, analysis and interpretation of data; in the writing of the report; and in the decision to submit the article for publication

Data Accessibility The data used for the analysis presented in this paper is available at the online supplementary materials for this paper.

References

- [1] Morton A. Countries must triple climate emission cut targets to limit global heating to 2C. <https://www.theguardian.com/environment/2019/sep/23/countries-must-triple-climate-emissions-targets-to-limit-global-heating-to-2c>; 2019 [accessed 28 Dec 2020].
- [2] GOV. UK becomes first major economy to pass net zero emissions law. <https://www.gov.uk/government/news/uk-becomes-first-major-economy-to-pass-net-zero-emissions-law>; 2019 [accessed 12 Aug 2019].
- [3] CCC. Net Zero: The UK's Contribution to Stopping Global Warming. <https://www.theccc.org.uk/wp-content/uploads/2019/05/Net-Zero-The-UKs-contribution-to-stopping-global-warming.pdf>; 2019.
- [4] Januta A. Global carbon emissions rebound to near pre-pandemic levels. <https://www.reuters.com/business/cop/global-carbon-emissions-rebound-near-pre-pandemic-levels-2021-11-04/>; 2021 [accessed 2021 12 Nov].
- [5] CCC. The Sixth Carbon Budget Methodology Report. <https://www.theccc.org.uk/wp-content/uploads/2020/12/The-Sixth-Carbon-Budget-Methodology-Report.pdf>; 2020.
- [6] CCC. UK housing: Fit for the future? <https://www.theccc.org.uk/wp-content/uploads/2019/02/UK-housing-Fit-for-the-future-CCC-2019.pdf>; 2019.
- [7] HM Government. UK Hydrogen Strategy. https://assets.publishing.service.gov.uk/government/uploads/system/uploads/attachment_data/file/1011283/UK-Hydrogen-Strategy_web.pdf; 2021 [accessed 2021 12 Nov].
- [8] Henretty N. Energy efficiency of housing in England and Wales. <https://www.ons.gov.uk/peoplepopulationandcommunity/housing/articles/energyefficiencyofhousinginenglandandwales/2020-09-23#energy-efficiency-of-new-and-existing-dwellings>; 2020 [accessed 1 Mar 2021].
- [9] Nieto J, Brockway P, Barrett J. Socio-macroeconomic impacts of meeting new build and retrofit UK building energy targets to 2030: a MARCO-UK modelling study. Sustainability Research Institute (SRI) Working Paper No 1212020.
- [10] BEIS & MHCLG. Energy Performance Certificates for buildings: Action plan. https://assets.publishing.service.gov.uk/government/uploads/system/uploads/attachment_data/file/922660/EP_C_Action_Plan.pdf; 2020.
- [11] BEIS & DLUHC. Improving Energy Performance Certificates: action plan - progress report. <https://www.gov.uk/government/publications/improving-energy-performance-certificates-action-plan-progress-report/improving-energy-performance-certificates-action-plan-progress-report>; 2021.
- [12] HM Government. The Ten Point Plan for a Green Industrial Revolution. <https://www.gov.uk/government/publications/the-ten-point-plan-for-a-green-industrial-revolution>; 2020 [accessed 3 Mar 2021].
- [13] GOV. New plans to make UK world leader in green energy. <https://www.gov.uk/government/news/new-plans-to-make-uk-world-leader-in-green-energy>; 2020 [accessed 21 Jan 2021].
- [14] Ahlrichs J, Rockstuhl S, Tränkler T, Wenninger S. The impact of political instruments on building energy retrofits: A risk-integrated thermal Energy Hub approach. Energy Policy. 2020;147.
- [15] Miu L, Hawkes AD. Private landlords and energy efficiency: Evidence for policymakers from a large-scale study in the United Kingdom. Energy Policy. 2020;142.

- [16] Trotta G. The determinants of energy efficient retrofit investments in the English residential sector. *Energy Policy*. 2018;120:175-82.
- [17] Galassi V, Madlener R. Shall I open the window? Policy implications of thermal-comfort adjustment practices in residential buildings. *Energy Policy*. 2018;119:518-27.
- [18] Broad O, Hawker G, Dodds PE. Decarbonising the UK residential sector: The dependence of national abatement on flexible and local views of the future. *Energy Policy*. 2020;140.
- [19] Gillich A, Saber EM, Mohareb E. Limits and uncertainty for energy efficiency in the UK housing stock. *Energy Policy*. 2019;133.
- [20] Killip G, Owen A. The construction industry as agents of energy demand configuration in the existing housing stock. *Energy Policy*. 2020;147.
- [21] Wade F, Bush R, Webb J. Emerging linked ecologies for a national scale retrofitting programme: The role of local authorities and delivery partners. *Energy Policy*. 2020;137.
- [22] Li X, Densley Tingley D. Solid wall insulation of the Victorian house stock in England: A whole life carbon perspective. *Building and Environment*. 2021;191.
- [23] Piddington J, Nicol S, Garrett H, Custard M. The Housing Stock of The United Kingdom. https://files.bregroup.com/bretrust/The-Housing-Stock-of-the-United-Kingdom_Report_BRE-Trust.pdf; 2020.
- [24] CCC. Advice on reducing the UK's emissions. <https://www.theccc.org.uk/about/our-expertise/advice-on-reducing-the-uks-emissions/>; 2020 [accessed 7 Mar 2021].
- [25] Tyndall center. The Tyndall Carbon Budget Tool. <https://carbonbudget.manchester.ac.uk/reports>; [accessed 25 May 2020].
- [26] UKGBC. Climate Change: UKGBC's vision for a sustainable built environment is one that mitigates and adapts to climate change. <https://www.ukgbc.org/climate-change/>; 2020 [accessed 8 May 2020].
- [27] Green Construction Board. Low Carbon Routemap for the UK Built Environment. <https://www.greenconstructionboard.org/otherdocs/Routemap%20final%20report%2005032013.pdf>; 2013.
- [28] Anderson K, Broderick JF, Stoddard I. A factor of two: how the mitigation plans of 'climate progressive' nations fall far short of Paris-compliant pathways. *Climate Policy*. 2020;20:1290-304.
- [29] Kuriakose J, Jones C, Anderson K, Broderick J, McLachlan C. Setting Climate Commitments for Cambridge. <https://carbonbudget.manchester.ac.uk/reports/E07000008/print/>; 2021 [accessed 1 Mar 2021].
- [30] CCC. Reducing UK emissions: Progress Report to Parliament. <https://www.theccc.org.uk/publication/reducing-uk-emissions-2020-progress-report-to-parliament/>; 2020.
- [31] CCC. The Sixth Carbon Budget The UK's path to Net Zero. <https://www.theccc.org.uk/wp-content/uploads/2020/12/The-Sixth-Carbon-Budget-The-UKs-path-to-Net-Zero.pdf>; 2020.
- [32] DCLG. English Housing Survey: Profile of English Housing 2012. https://assets.publishing.service.gov.uk/government/uploads/system/uploads/attachment_data/file/335753/EH_S_Profile_of_English_housing_2012.pdf; 2014.
- [33] Bhattacharya M, Inekwe JN, Sadorsky P. Consumption-based and territory-based carbon emissions intensity: Determinants and forecasting using club convergence across countries. *Energy Economics*. 2020;86.
- [34] Salem R, Bahadori-Jahromi A, Mylona A, Godfrey P, Cook D. Life-cycle cost analysis of retrofit scenarios for a UK residential dwelling. *Proceedings of the Institution of Civil Engineers - Engineering Sustainability*. 2020;173:57-72.
- [35] Lowe R, Summerfield A, Oikonomou E, Love J, Biddulph P, Gleeson C, et al. Final report on analysis of heat pump data from the renewable heat premium payment (RHPP) scheme https://assets.publishing.service.gov.uk/government/uploads/system/uploads/attachment_data/file/606818/DECC_RHPP_161214_Final_Report_v1-13.pdf; 2017.
- [36] HM Government. Approved Document L1B: conservation of fuel and power in existing dwellings, 2010 edition (incorporating 2010, 2011, 2013, 2016 and 2018 amendments). 2018.
- [37] Passivhaus trust. The UK no longer just cool. <https://www.passivhaustrust.org.uk/news/detail/?nId=597>; 2016 [accessed 8 Nov 2021].
- [38] Downson. M. CIBSE Case Study: 1960s Housing Estate Refurbishment Creates Low Carbon Homes. <https://www.cibse.org/knowledge/knowledge-items/detail?id=a0q2000008JgXY>; 2012 [accessed 15 Oct 2021].
- [39] BEIS. National Household Model. <https://data.gov.uk/dataset/957eadbe-43b6-4d8d-b931-8594cb346ecd/national-household-model>; 2017 [accessed 11 Feb 2021].

- [40] BRE. The Government's Standard Assessment Procedure for Energy Rating of Dwellings. https://www.bre.co.uk/filelibrary/SAP/2012/SAP-2012_9-92.pdf; 2014 [accessed 12 Jan 2021].
- [41] BRE. BREDEM 2012: A technical description of the BRE Domestic Energy Model. <https://www.bre.co.uk/filelibrary/bredem/BREDEM-2012-specification.pdf>; 2013 [accessed 12 Jan 2021].
- [42] BEIS. 2019 UK greenhouse gas emissions, provisional figures. <https://www.gov.uk/government/statistics/provisional-uk-greenhouse-gas-emissions-national-statistics-2019>; 2020 [accessed 24 Dec 2020].
- [43] national grid. Future Energy Scenarios. <https://www.nationalgrideso.com/document/173821/download>; 2020.
- [44] BEIS. Greenhouse gas reporting: conversion factors 2019. <https://www.gov.uk/government/publications/greenhouse-gas-reporting-conversion-factors-2019>; 2019 [accessed 9 Feb 2021].
- [45] national grid. FES Modelling Methods 2020. <https://www.nationalgrideso.com/document/173796/download>; 2020.
- [46] Bui M, Adjiman CS, Bardow A, Anthony EJ, Boston A, Brown S, et al. Carbon capture and storage (CCS): the way forward. *Energy & Environmental Science*. 2018;11:1062-176.
- [47] DECC. Assessment of the costs, performance and characteristics of UK heat networks. <https://www.gov.uk/government/publications/assessment-of-the-costs-performance-and-characteristics-of-uk-heat-networks>; 2015.
- [48] UK Green Building Council. Tackling embodied carbon in buildings. The Crown Estate; 2015.
- [49] RICS. Whole life carbon assessment for the built environment. 2017.
- [50] Jones C, Hammond G. Inventory of carbon & energy (ICE) V3.0 - 7 Nov 2019. 2019.
- [51] GOV. Domestic Renewable Heat Incentive (RHI). <https://www.gov.uk/domestic-renewable-heat-incentive>; 2015 [accessed 16 Jun 2020].
- [52] Greening B, Azapagic A. Domestic heat pumps: Life cycle environmental impacts and potential implications for the UK. *Energy*. 2012;39:205-17.
- [53] Gupta R, Kotopouleas A. Magnitude and extent of building fabric thermal performance gap in UK low energy housing. *Applied Energy*. 2018;222:673-86.
- [54] Department for Business EIS. Energy Trends: March 2020, special feature article - Wind powered electricity in the UK. GOV. 2020.
- [55] Elgot J, Ambrose J, Harvey F. Boris Johnson to unveil plan to power all UK homes with wind by 2030. https://www.theguardian.com/politics/2020/oct/05/boris-johnson-to-unveil-plan-to-power-all-uk-homes-with-wind-by-2030?CMP=Share_AndroidApp_Other; 2020 [accessed 21 Dec 2020].
- [56] Smoucha EA, Fitzpatrick K. Life Cycle Analysis of the Embodied Carbon Emissions from 14 Wind Turbines with Rated Powers between 50 Kw and 3.4 Mw. *Journal of Fundamentals of Renewable Energy and Applications*. 2016;6.
- [57] BEIS. Digest of UK Energy Statistics (DUKES): electricity. <https://www.gov.uk/government/statistics/electricity-chapter-5-digest-of-united-kingdom-energy-statistics-dukes>; 2020 [accessed 30 Nov 2020].
- [58] Johnson RC, Mayfield M, Beck SBM. Utilization of stochastically located customer owned battery energy storage systems for violation management on UK LV residential feeders with varying renewables penetrations. *Journal of Energy Storage*. 2018;19:52-66.
- [59] BSI. BS EN 15978: 2011. Sustainability of construction works Assessment of environmental performance of buildings Calculation method. 2011.
- [60] BEIS. National Energy Efficiency Data-Framework (NEED). <https://www.gov.uk/government/collections/national-energy-efficiency-data-need-framework>; 2020 [accessed 25 Oct 2020].
- [61] Sedy A. Types of solar panels: which one is the best choice? <https://www.solarreviews.com/blog/pros-and-cons-of-monocrystalline-vs-polycrystalline-solar-panels>; 2020 [accessed 3 Nov 2020].

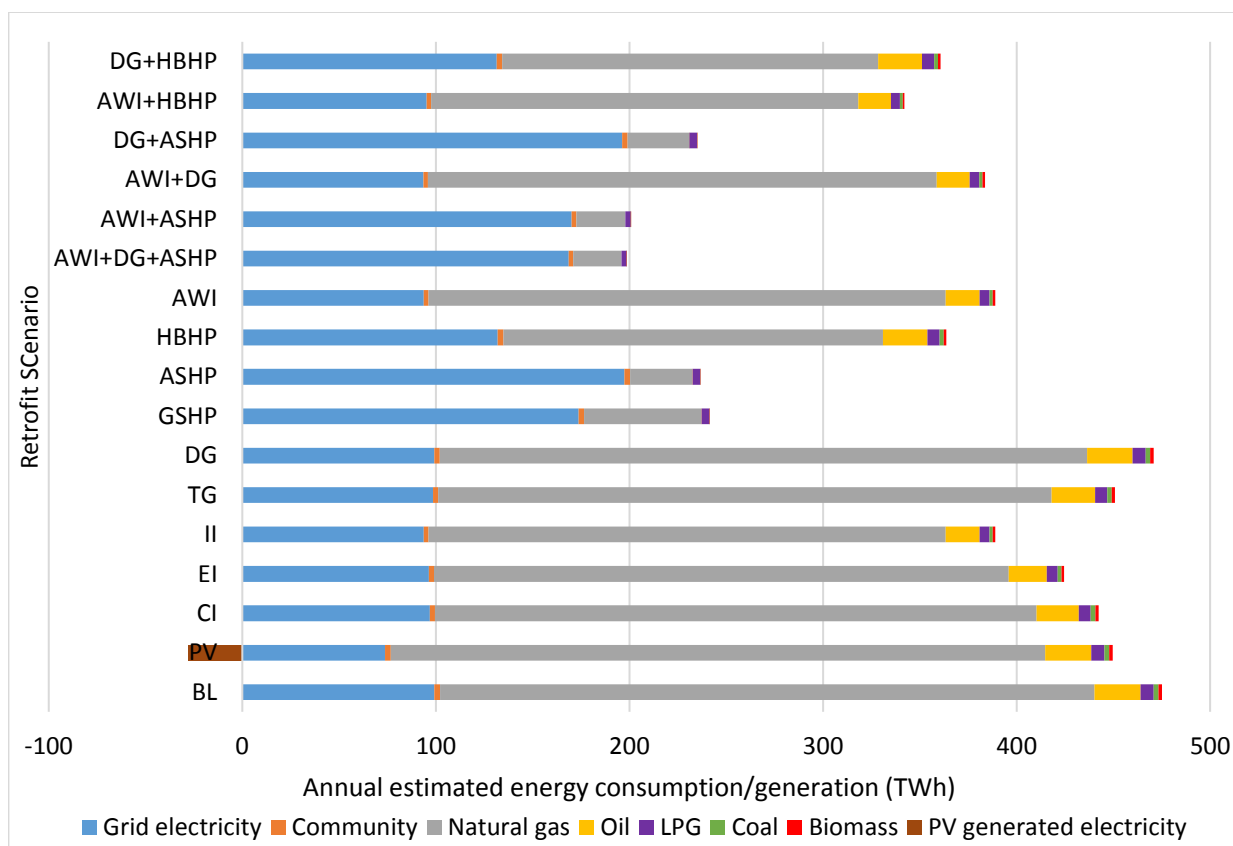


Figure 2

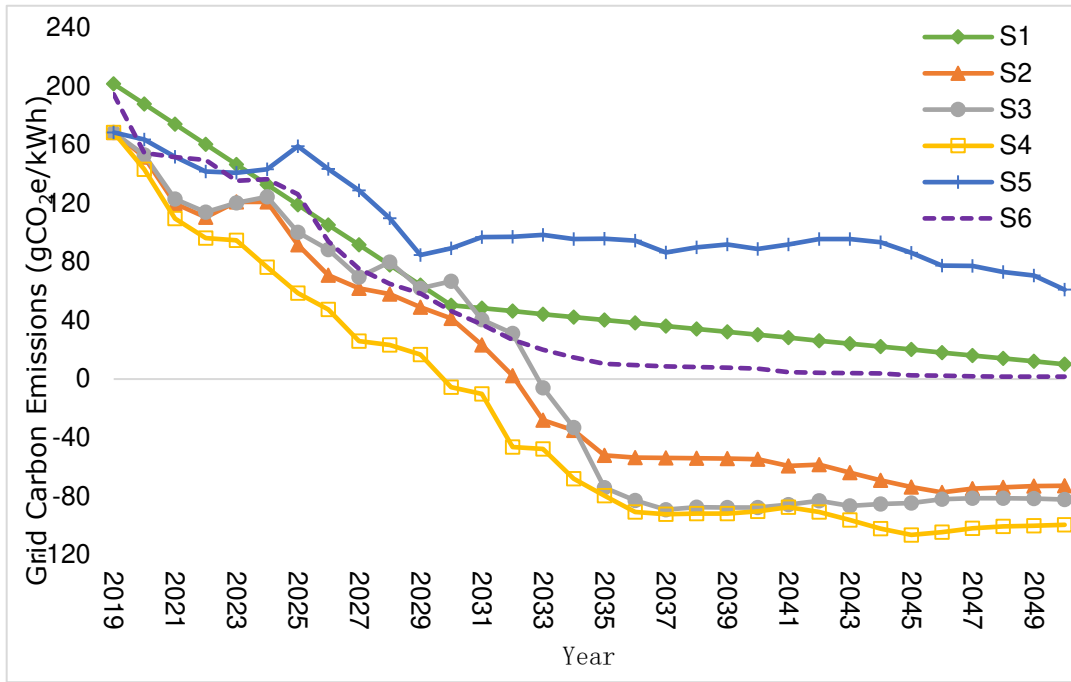


Figure 3

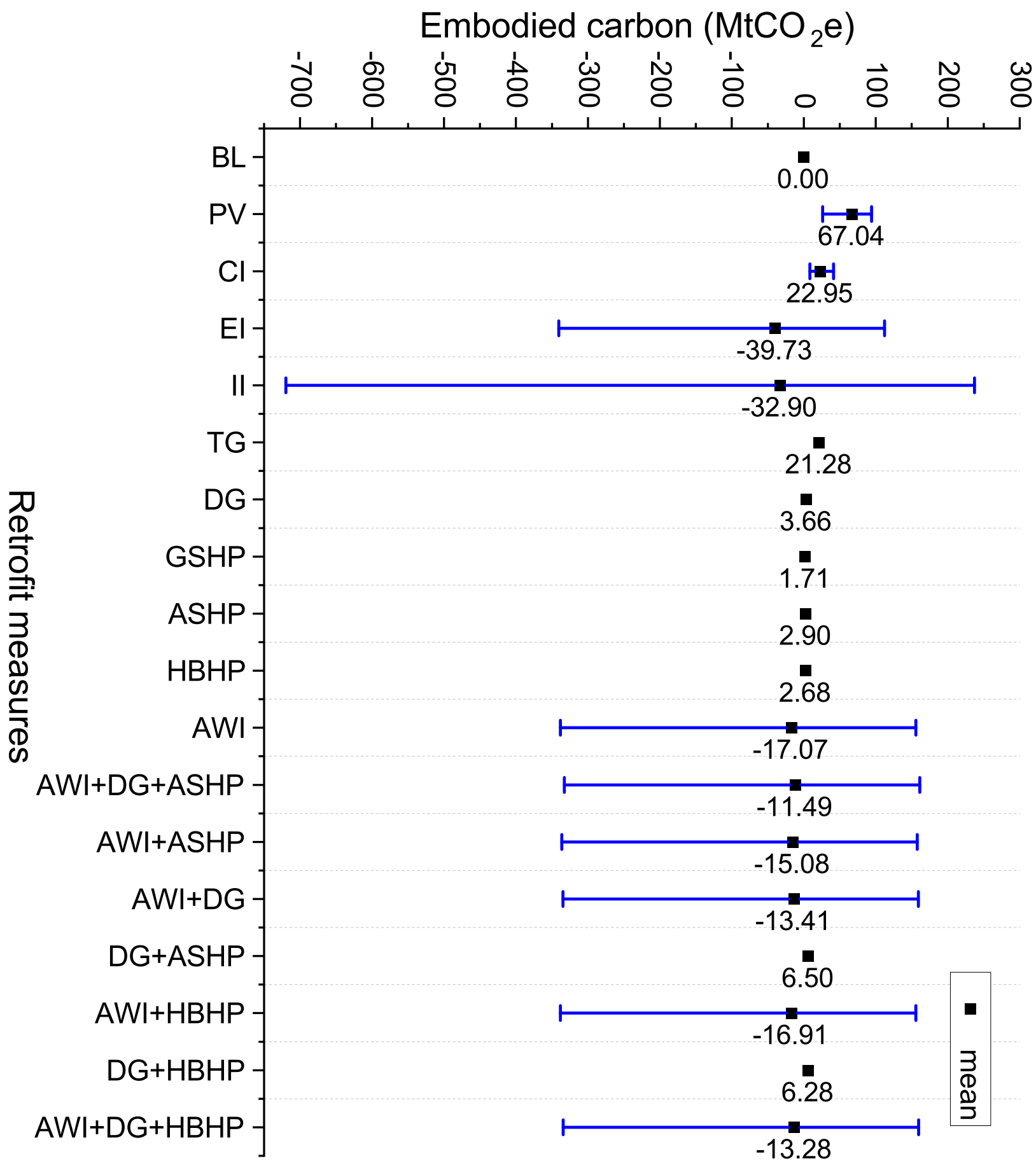


Figure 4

Operational carbon emissions(MtCO₂e)

Retrofit measures

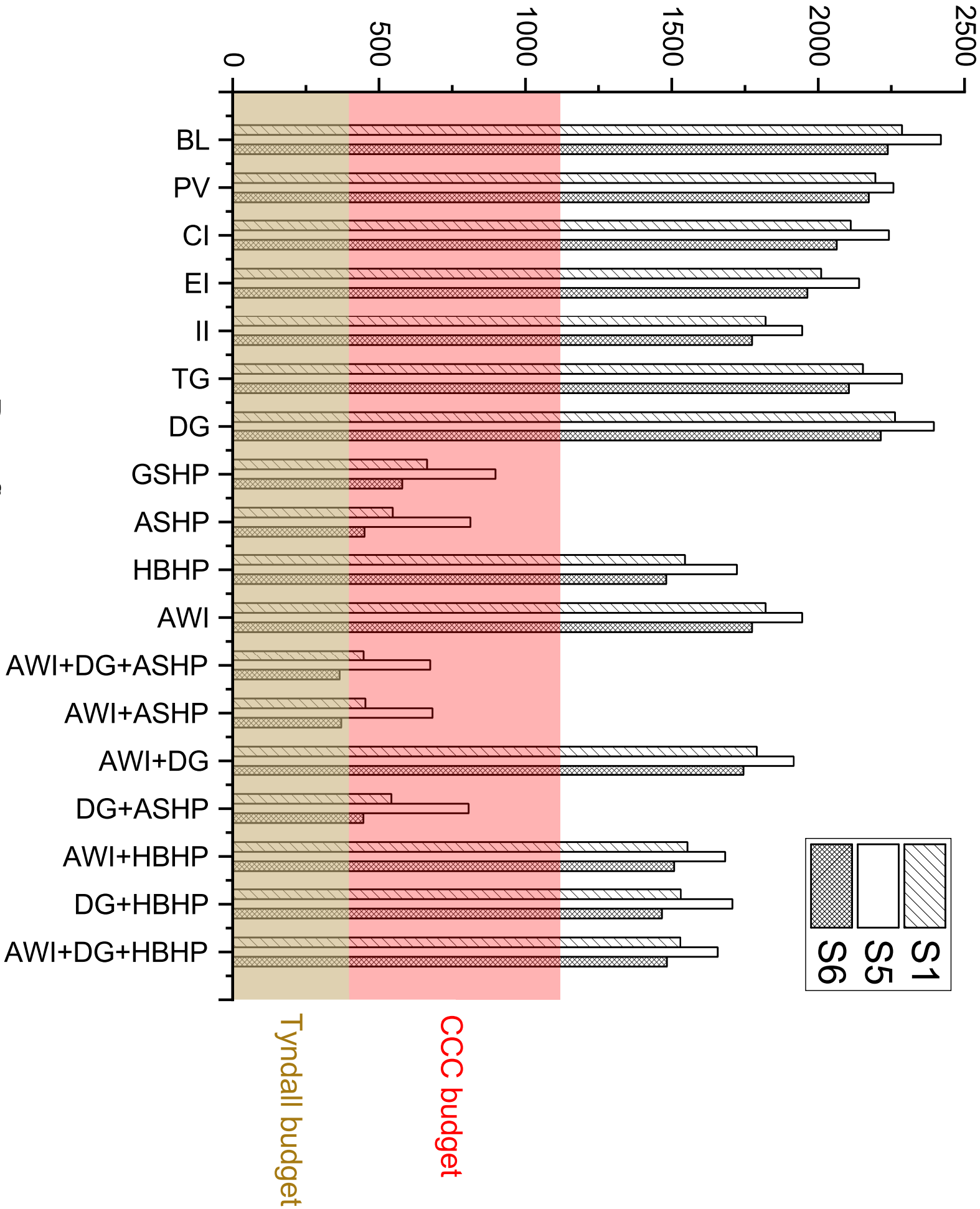
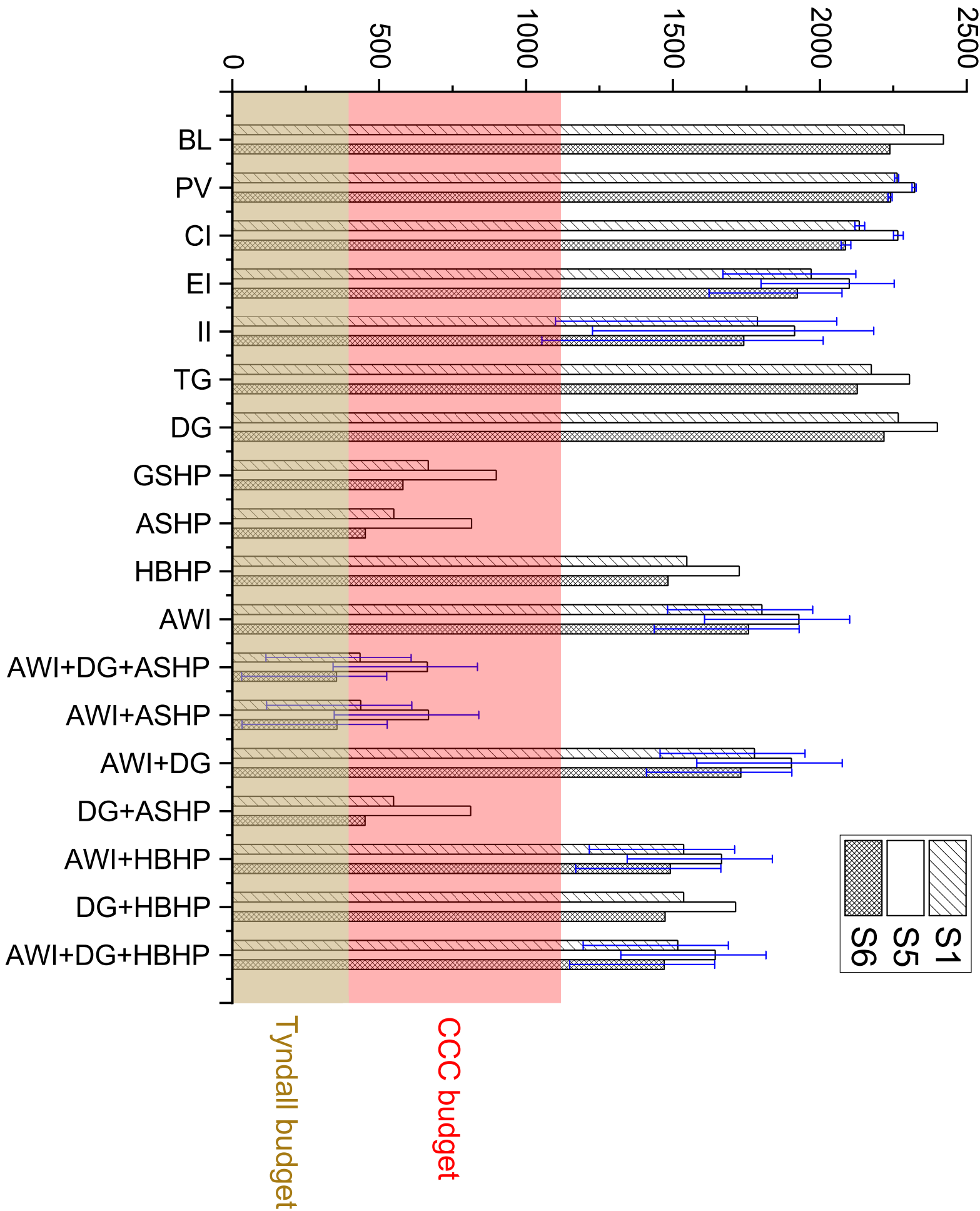
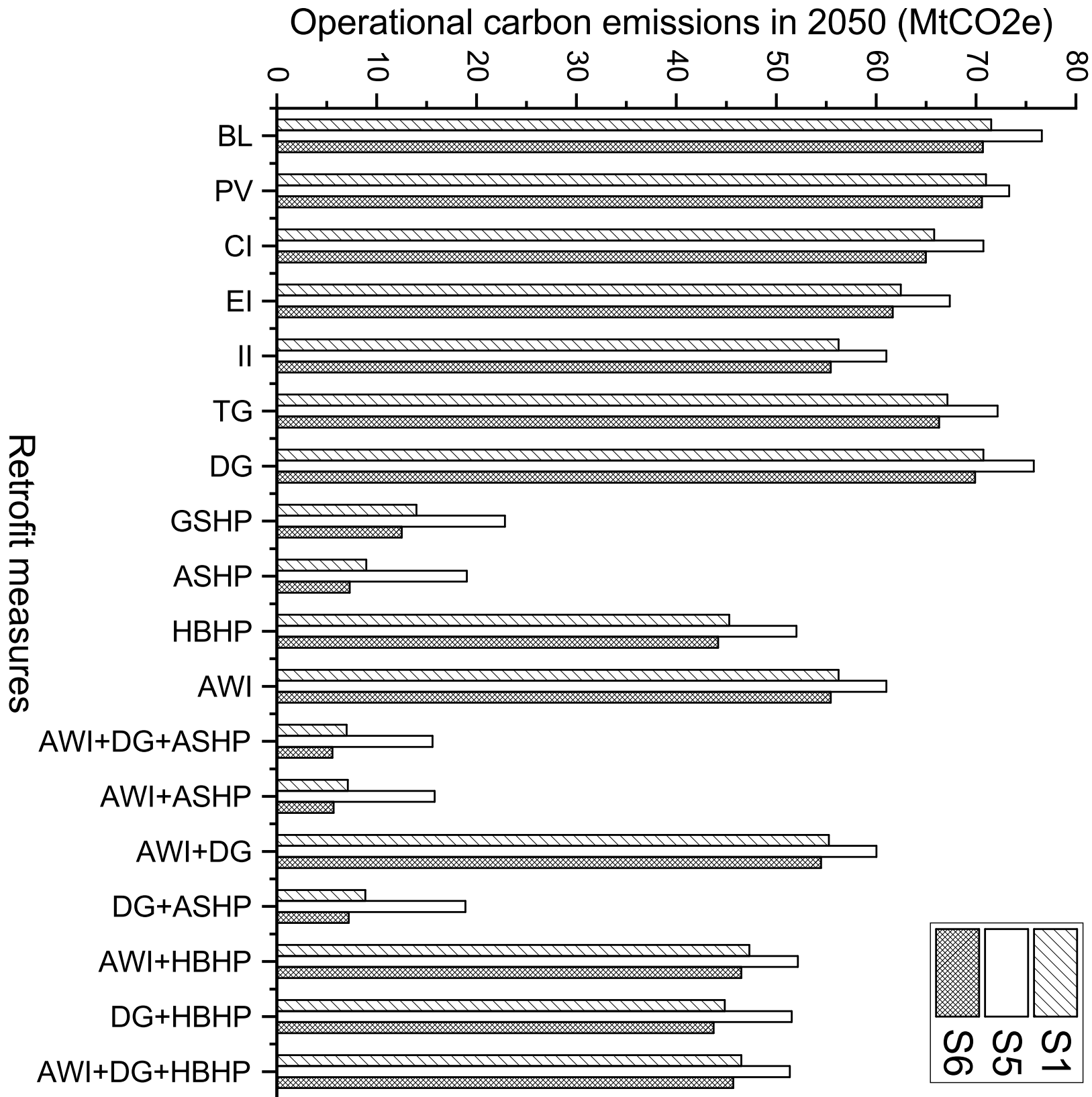


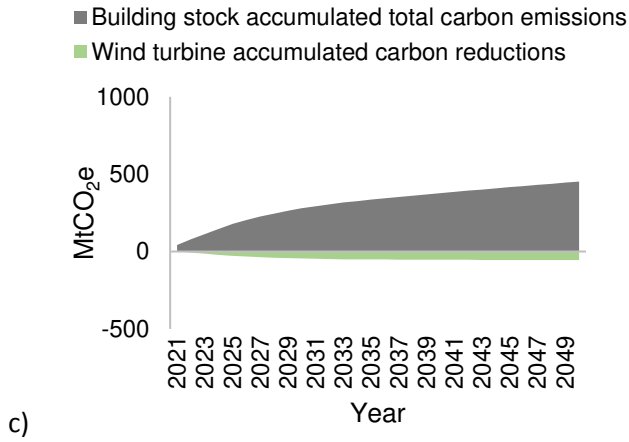
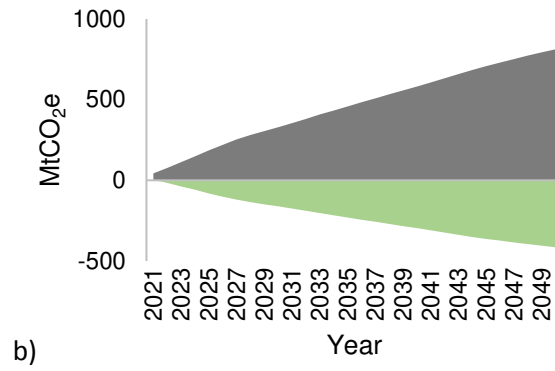
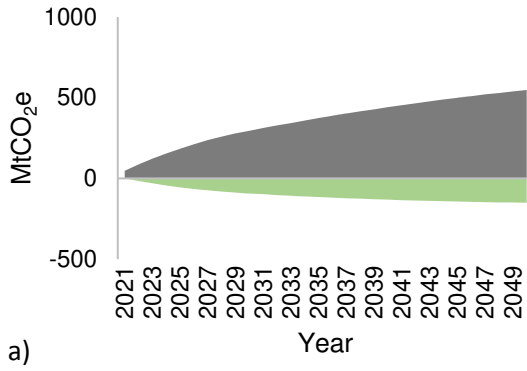
Figure 5

Total carbon emissions (MtCO₂e)

Retrofit measures







Highlights

- Exploration of retrofit measures to meet carbon budget for English housing stock
- Whole life carbon analysis including both embodied and operational carbon emissions
- Carbon payback for all measures except PV estimated to be within 5 years
- CCC Carbon budgets only met with rapid deployment of air/ground source heat pumps
- Meeting Tyndall carbon budget also requires wall insulation using low carbon materials

Declaration of interests

The authors declare that they have no known competing financial interests or personal relationships that could have appeared to influence the work reported in this paper.

The authors declare the following financial interests/personal relationships which may be considered as potential competing interests:

Li, X: Methodology, Investigation, Writing - Original Draft, Writing - review & editing.;

Arbabi, H: Methodology, Investigation, Writing - Original Draft, Writing - review & editing.;

Bennett, G: Methodology, Investigation, Writing - Original Draft.; **Oreszczyn, T:**

Conceptualization, Methodology, Writing - review & editing.; **Densley Tingley, D.:**

Conceptualization, Methodology, Writing - review & editing