

This is a repository copy of *The DIAMONDS intervention to support self-management of type 2 diabetes in people with severe mental illness: study protocol for a single-group feasibility study*.

White Rose Research Online URL for this paper:

<https://eprints.whiterose.ac.uk/184383/>

Version: Published Version

Article:

Brown, Jennifer Valeska Elli orcid.org/0000-0003-0943-5177, Ajjan, Ramzi, Alderson, Sarah et al. (19 more authors) (2022) The DIAMONDS intervention to support self-management of type 2 diabetes in people with severe mental illness: study protocol for a single-group feasibility study. *SSM - Mental Health*. ISSN 2666-5603

<https://doi.org/10.1016/j.ssmmh.2022.100086>

Reuse

This article is distributed under the terms of the Creative Commons Attribution-NonCommercial-NoDerivs (CC BY-NC-ND) licence. This licence only allows you to download this work and share it with others as long as you credit the authors, but you can't change the article in any way or use it commercially. More information and the full terms of the licence here: <https://creativecommons.org/licenses/>

Takedown

If you consider content in White Rose Research Online to be in breach of UK law, please notify us by emailing eprints@whiterose.ac.uk including the URL of the record and the reason for the withdrawal request.



The DIAMONDS intervention to support self-management of type 2 diabetes in people with severe mental illness: Study protocol for a single-group feasibility study



Jennifer V.E. Brown^{a,*}, Ramzi Ajjan^b, Sarah Alderson^c, Jan R. Böhnke^{a,d}, Claire Carswell^a, Patrick Doherty^a, Keith Double^e, Simon Gilbody^{a,f}, Michelle Hadjiconstantinou^g, Catherine Hewitt^a, Richard I.G. Holt^h, Rowena Jacobsⁱ, Vicki Johnson^j, Ian Kellar^k, David Osborn^l, Steve Parrott^a, David Shiers^m, Johanna Taylor^a, Jacqui Troughton^j, Judith Watson^a, Najma Siddiqi^{a,f,n}, Peter A. Coventry^a, on behalf of the DIAMONDS research team

^a Department of Health Sciences, University of York, York, UK

^b Leeds Institute of Cardiovascular and Metabolic Medicine, University of Leeds, Leeds, UK

^c Leeds Institute of Health Sciences, University of Leeds, Leeds, UK

^d School of Health Sciences, University of Dundee, Dundee, UK

^e DIAMONDS Voice Member (service user), UK

^f Hull York Medical School, York, UK

^g Diabetes Research Centre, College of Life Sciences, University of Leicester, Leicester, UK

^h Human Development and Health, Faculty of Medicine, University of Southampton, Southampton National Institute for Health Research Biomedical Research Centre, University Hospital Southampton NHS Foundation Trust, Southampton, UK

ⁱ Centre for Health Economics, University of York, York, UK

^j Leicester Diabetes Centre, University Hospitals of Leicester NHS Trust, Leicester, UK

^k School of Psychology, University of Leeds, Leeds, UK

^l Division of Psychiatry, University College London, Camden & Islington NHS Foundation Trust, London, UK

^m Psychosis Research Unit, Greater Manchester Mental Health NHS Trust, University of Manchester, Primary Care and Health Sciences, Keele University, Keele, UK

ⁿ Bradford District Care NHS Foundation Trust, Bradford, UK

ARTICLE INFO

Keywords:

Severe mental illness
Diabetes
Feasibility study
Continuous glucose monitoring
Mental health
Multimorbidity

ABSTRACT

Introduction.

The DIAMONDS programme aims to evaluate a novel supported diabetes self-management intervention for people with severe mental illness (the “DIAMONDS intervention”). The purpose of this study is to test the feasibility of intervention delivery and data collection procedures to inform a definitive randomised controlled trial (RCT).

Methods.

Adults aged 18 years or over with a diagnosis of type 2 diabetes and severe mental illness (schizophrenia, schizoaffective disorder, or bipolar disorder) will be eligible for inclusion. Individuals with other types of diabetes or non-psychotic mental illness and those lacking capacity to consent will not be eligible. Participants will be recruited from NHS mental health trusts and general practices across the North of England. All participants will receive the DIAMONDS intervention: weekly one-to-one sessions with a trained facilitator (“DIAMONDS Coach”) to support goal setting, action planning, and diabetes education; ongoing self-management supported by a paper-based workbook and optional digital application (app); and monthly peer-support group sessions with other participants. The primary outcomes are: 1. Recruitment rate, measured as proportion of the recruitment target (N

Abbreviations: BCT, behaviour change technique; BMI, Body Mass Index; CGM, continuous glucose monitoring; CTC, consent-to-contact; GP, general practitioner; HbA1c, glycated haemoglobin A1c; LTC, long-term condition; MoA, Mechanism of Action; NHS, National Health Service; NIHR, National Institute for Health Research; RCT, randomised controlled trial; R&D, research and development; SMI, severe mental illness; TFA, Theoretical Framework of Acceptability.

* Corresponding author. Mental Health & Addiction Research Group, Department of Health Sciences, University of York, York, YO10 5DD, UK.

E-mail address: jennifer.brown@york.ac.uk (J.V.E. Brown).

<https://doi.org/10.1016/j.ssmmh.2022.100086>

Received 1 December 2021; Received in revised form 1 March 2022; Accepted 1 March 2022

Available online 4 March 2022

2666-5603/© 2022 The Authors. Published by Elsevier Ltd. This is an open access article under the CC BY-NC-ND license (<http://creativecommons.org/licenses/by-nc-nd/4.0/>).

= 30) achieved at 5 months from start of recruitment, 2. Attrition measured as the proportion of missing outcomes data at the end of the recruitment period (5 months from start of recruitment) for physiological and self-reported data items, 3. Intervention delivery rate recorded as the proportion of planned sessions delivered (measured by the number of completed intervention session logs per participant within 15 weeks of the first intervention session). Secondary outcomes include completeness of data collection at baseline and of process evaluation data at follow-up as well as the feasibility and acceptability of the intervention and of wearing a blinded continuous glucose monitoring device. An intervention fidelity framework will also be developed. Recruitment started in July 2021. The study was prospectively registered: ISRCTN15328700 (12th March 2021).

Discussion.

The results of this feasibility study will inform the refinement of the content and delivery of the DIAMONDS intervention, as well as research procedures, including recruitment and data collection, in preparation for the main DIAMONDS RCT.

1. Introduction

People with severe mental illness (SMI; i.e. long-term mental illnesses such as schizophrenia, schizoaffective disorder, and bipolar disorder) (Ruggeri et al., 2000) experience higher rates of physical illness and poorer health outcomes than the general population. People with SMI die 15–20 years earlier than the general population (Brown et al., 2010; De Hert et al., 2009; Osborn et al., 2007; Reilly et al., 2015), mainly from comorbid long-term conditions (LTCs) (Schoepf et al., 2012; Vinogradova et al., 2010; Wu et al., 2015). The provision of clinically and cost-effective healthcare for people with combinations of mental and physical illness is recognised as challenging (Mercer et al., 2012). Symptoms associated with co-existing mental and physical conditions and treatment regimens may interact antagonistically and exacerbate disease and treatment burden (NICE, 2016).

Diabetes is two to three times more common in people with SMI than in the general population (Reilly et al., 2015; Ward & Druss, 2015), and is associated with poorer outcomes than for individuals with diabetes alone (Schoepf et al., 2012; Vinogradova et al., 2010; Wu et al., 2015). Over 99% of diabetes care falls to self-management (All-Party Parliamentary Group, 2015). Appropriate self-management in diabetes (in common with other LTCs) is fundamental to improving clinical outcomes in this population (Diabetes UK, 2009; NHS England, 2014; NICE, 2015). Self-management refers to the skills, practices, and behaviours that a person engages in to protect and promote their health. Diabetes self-management activities include: consuming a healthy diet; increasing physical activity; smoking cessation; monitoring glycaemic levels; preventing complications; and taking medicines as prescribed (Newman et al., 2004; Nobis et al., 2015). “Self-management education” is key to supporting self-management (NICE, 2015; Norris et al., 2001; Worswick et al., 2013). In England, diabetes self-management education programmes are recommended for people with recently diagnosed type 2 diabetes and their family members or supporters (NICE, 2015). Such programmes typically include educational and behavioural elements to increase knowledge, skills, and ability for self-management (Fan & Sidani, 2009), and target healthy diet, exercise, smoking cessation, appropriate self-monitoring, and medication taking (NICE, 2015; Powers et al., 2015). Self-management education programmes for the general population with diabetes have been found to be both clinically worthwhile and cost-effective (All-Party Parliamentary G, 2015; Chrvala et al., 2016; Fan & Sidani, 2009; Loveman et al., 2008; Steinsbekk et al., 2012; Tricco et al., 2012).

For people with SMI and diabetes, self-management support is rarely offered, although reliable data on this are difficult to obtain (Smith et al., 2019). Moreover, the effectiveness of diabetes self-management programmes for people with SMI is largely unknown as research typically excludes them (McBain et al., 2016; Chwastiak et al., 2015; Davies et al., 2008). SMI is characterised by disturbances of thought, perception, affect, and motivation (Harvey, 2011; Holt, 2012), which may adversely influence self-efficacy, literacy, lifestyle, behaviour, and family life (Chen et al., 2014; Davis & Brekke, 2014; Firth et al., 2016; Wykes et al., 2016). Diabetes self-management programmes designed for the general

population do not address these important barriers (Aschbrenner et al., 2013; Kaufman et al., 2012a; Roberts and Bailey, 2011a, 2013a).

The DIAMONDS programme aims to develop and evaluate a diabetes self-management intervention for people with SMI and type 2 diabetes (The DIAMONDS Research Team, 2021). The goal of the intervention is to support people to engage in type 2 diabetes self-management behaviours, alongside managing mental health comorbidities in order to improve glycaemic levels.

We have developed a blended-delivery self-management intervention that is based on the Theoretical Domains Framework and its extension, the Mechanism of Action (MoA) framework (Cane et al., 2012; Carey et al., 2019). MoAs are the processes through which behaviour change techniques (BCTs) influence behaviour. These processes can relate to characteristics of the individual or characteristics of the wider social and physical environment (Carey et al., 2019). This process involved systematically reviewing the literature with a focus on living with SMI and LTCs to identify MoAs that underpin candidate BCTs (Coventry et al., 2021; Carswell et al., 2021; Balogun-Katung et al., 2021). Additionally, we conducted in-depth semi-structured interviews to better understand the lived experience of people with SMI and LTCs and their carers. Health professionals supporting people with SMI were also interviewed (DIAMONDS Quest) to ascertain barriers and facilitators to optimal diabetes care for this population. Findings from the qualitative interviews will be published separately. These qualitative data were integrated with the review findings to inform a consensus exercise to identify which MoA-BCT links and modes of delivery offered the most potential and utility to modify self-management behaviours in people with SMI and LTCs.

We then worked in partnership with people with SMI and diabetes, along with their family members/friends, as well as healthcare staff who support people with SMI and diabetes, to co-design prototypes of the diabetes self-management intervention (Government Digital Service, 2017; International Organization for Standardization, 2015, p. 23; The King's Fund, 2014; Ward-Horner & Sturmey, 2010). Preliminary user testing of these prototypes has helped to establish acceptability and functionality of the intervention in the DIAMONDS Co-design study. Details of the development process and outcomes will also be reported separately; the intervention components are described in the methods section.

Before we can definitively test clinical and cost-effectiveness of the DIAMONDS intervention, we first need to test the feasibility and acceptability of study processes and the means to deliver the intervention.

1.1. Objectives

The objectives of the feasibility study are to:

1. Test the feasibility of procedures for recruitment and retention of participants.
2. Test the feasibility of quantitative and qualitative data collection.

3. Undertake an evaluation of the acceptability and feasibility of the DIAMONDS intervention.
4. Undertake an exploratory economic evaluation.
5. Undertake an exploratory evaluation of the acceptability and feasibility of continuous glucose monitors among individuals with type 2 diabetes and SMI.
6. Develop an intervention fidelity framework for use in a future RCT.

2. Material and methods

This study protocol is reported in line with the SPIRIT checklist for trial protocols which can be found in [Appendix A](#). Ethical approval was obtained from the Research Ethics Committee Leeds West (reference: 21/YH/0059).

This is a protocol for a single-group feasibility study which incorporates a mixed-methods process evaluation. The study setting will include six mental health trusts (secondary care) and approximately ten general practices (primary care) in the North of England.

2.1. Study population

Inclusion criteria: The target population will be adults (aged 18 years or older) with SMI (schizophrenia, bipolar disorder, schizoaffective disorder, psychosis not otherwise specified) and type 2 diabetes (insulin and non-insulin treated). For participants recruited via health services, a diagnosis of SMI will be confirmed by specialist psychiatric services or by a general practitioner (GP) and be documented in the patient's medical records in general practice or secondary care. The diagnosis of type 2 diabetes needs to be of at least three months' duration and documented in the medical records. For participants who are recruited from third sector and mental health service user groups, self-reported type 2 diabetes will be confirmed from primary care medical records.

Exclusion criteria: People who have cognitive impairment and those with a diagnosis of gestational diabetes, type 1 diabetes, diabetes due to a specific genetic defect or secondary to pancreatitis or endocrine conditions will be excluded. We will also exclude patients who lack capacity to participate in the study, guided by the 2005 Mental Capacity Act.

2.2. Sample size

We aim to recruit 30 participants with SMI and type 2 diabetes. This sample size is sufficient to collect feasibility data on the specified outcomes and in line with the median sample size used in feasibility studies funded by NIHR ([Billingham et al., 2013](#)). In addition, approximately seven informal carers and up to ten healthcare professionals trained to deliver the DIAMONDS intervention ("DIAMONDS Coaches") will be recruited to take part in qualitative interviews.

2.3. Service user recruitment and consent procedures

Recruitment of participants will employ methods successfully deployed in the SCIMITAR+ ([Gilbody et al., 2019](#)), STEPWISE ([Holt et al. 2019](#)), and PRIMROSE ([Osborn et al., 2018](#)) trials and use a staged consent procedure. All participant-facing documents were produced in collaboration with DIAMONDS Voice, our service user and carer group. Eligible patients will first receive a brief study information leaflet which will be followed by a study information pack containing an invitation letter to join the study, a participant information sheet, and consent form. Potential participants will be contacted a few days later to discuss the study and to arrange a face-to-face or virtual meeting where they will be given a further opportunity to ask questions about the study. If the individual is willing to join the study at this point, informed consent will be taken. A sample consent form can be found in [Appendix B](#).

2.4. Recruitment sources

GP database screening: General practices will be asked to consult their SMI and LTC Quality and Outcomes Framework registers to screen for potentially eligible patients ([NHS Digital, 2021](#)). GPs at participating practices will check the lists produced by the database search to confirm eligibility. Study information documents will be sent from these organisations, following the staged process as described previously. Consent-to-contact (CTC) will be obtained from patients approached in this way prior to study information being sent out by the research team.

Primary care referral following annual health check: A brief study information leaflet and CTC form will be given to interested and potentially eligible patients during their health check. Once CTC has been obtained, the consent process as described previously will be followed.

Community mental health teams: Authorised staff at participating sites will run searches in databases held in secondary care and screen community mental health team caseloads for potentially eligible patients. Individuals identified will be approached using the processes as described previously.

Identification from previous studies and research cohorts: We will also explore the option to use records from previous related studies and existing research cohorts to contact potentially eligible patients who have given consent to be contacted about other research. We will send a brief study information leaflet and a CTC form to the interested individual to complete and return to the study team. Before sending out the study information pack, the study team will use a diabetes screening question over the telephone with all individuals who return the CTC form.

Recruitment from third sector and service user groups: We will further aim to recruit from relevant local third sector organisations and service user groups. People who are interested in taking part in the study will be directed to the person in the organisation/service supporting the study, or the DIAMONDS study team. As detailed earlier, they will be provided with a brief study information leaflet and will be asked to complete and return the CTC form.

Regardless of the route of recruitment, potential participants will have a further opportunity to clarify any points they did not understand and ask any questions when they meet a member of the Research & Development (R&D) team at the participating NHS site who will be responsible for taking consent and completing baseline measures. Potential participants identified outside of secondary care will also be consented by a member of the R&D team of the NHS trust whose care they are under. Only those under the care of a participating trust will be eligible. It will be emphasised that the participant may withdraw their consent to participate at any time, without having to provide a reason, and without it affecting their usual care or benefits to which they are entitled. The participant will also be informed that by consenting, they agree to their GP being made aware of their participation in the study and their medical records may be inspected by the study team. The person taking consent will have training and competence in assessing capacity and taking consent in people with SMI. Written informed consent will be obtained with both the participant and the researcher signing and dating the consent forms prior to enrolment. However, appropriate procedures for taking verbal consent over the telephone will be in place, where an in-person meeting is not possible. An overview of the study management and governance structures can be found in [Appendix C](#).

2.5. The DIAMONDS intervention

The focus of the intervention was specified following a co-design process that involved service-users, carers, and health professionals. The methodological and substantive content of the co-design process will be described in full in a separate publication. The intervention content is described using the Template for Intervention Description and Replication (TIDieR) checklist ([Appendix D](#)). ([Hoffmann et al., 2014](#)) Intervention materials cannot be offered open access at this stage because they

have not undergone definitive evaluation yet and may be developed further in preparation for the main trial. All participants will receive the DIAMONDS intervention and access to standard care will continue as usual. The DIAMONDS intervention is a tailored self-management support programme to help people with type 2 diabetes and SMI self-manage their diabetes through:

- Increasing knowledge and skills for type 2 diabetes self-management.
- Providing support to increase physical activity levels and make healthier food choices.
- Identifying and addressing barriers to taking medications.
- Identifying and addressing sleep problems.
- Supporting participants to manage their diabetes within the context of fluctuating and low mood.
- Facilitating peer support.

The intervention will be delivered by a trained facilitator (the “DIAMONDS Coach”), over 16 weeks, using a combination of individual weekly sessions and daily use of a paper-based workbook (the “DIAMONDS Workbook”) which will be supported by daily use of an optional digital app (“Change One Thing”), as well as optional monthly group sessions (see Fig. 1).

Using a specially developed and standardised training programme, we will train healthcare staff with experience of working in mental health services to become DIAMONDS Coaches. The training will be delivered by means of interactive workshops and supported by a training handbook and online videos and resources. All Coaches will receive and be

instructed to use a Coach Manual to deliver the intervention. The Coach training materials and the Manual will cover the philosophy underpinning DIAMONDS, key coach behaviours, facilitation skills, and BCTs required to deliver the DIAMONDS intervention. Self-reflection will be encouraged and mentorship from the training team will also be provided.

Participants will be offered up to 16 individual weekly sessions with a DIAMONDS Coach. The first session will last between 60 and 90 min and follow-up sessions will each last between 30 and 60 min depending on the needs and preferences of the participant. All sessions will ideally be delivered face-to-face; however, they may be delivered by telephone or video call if participants express a preference for this and/or if ongoing COVID-19 restrictions necessitate remote delivery. In partnership with stakeholders, we decided to test a version of the intervention that allows us to work safely and take precautions to manage the risk of COVID-19 rather than redesigning it to be fully remote.

The main aim of the weekly sessions is to set goals and make plans to improve sleep, medication taking, or another area of self-management chosen by the participant in partnership with their Coach. In addition, the sessions aim to provide information about diabetes, and to support participants to increase physical activity levels and make other healthy lifestyle changes. As part of their training, DIAMONDS Coaches will be encouraged to adopt a flexible and person-centred approach to intervention delivery, taking into account participant preferences. This approach includes options for participants to engage with the intervention materials at their own pace and in a sequence that matches their priorities for self-management. Participants will be encouraged to engage with the intervention in between the weekly sessions. This process will be

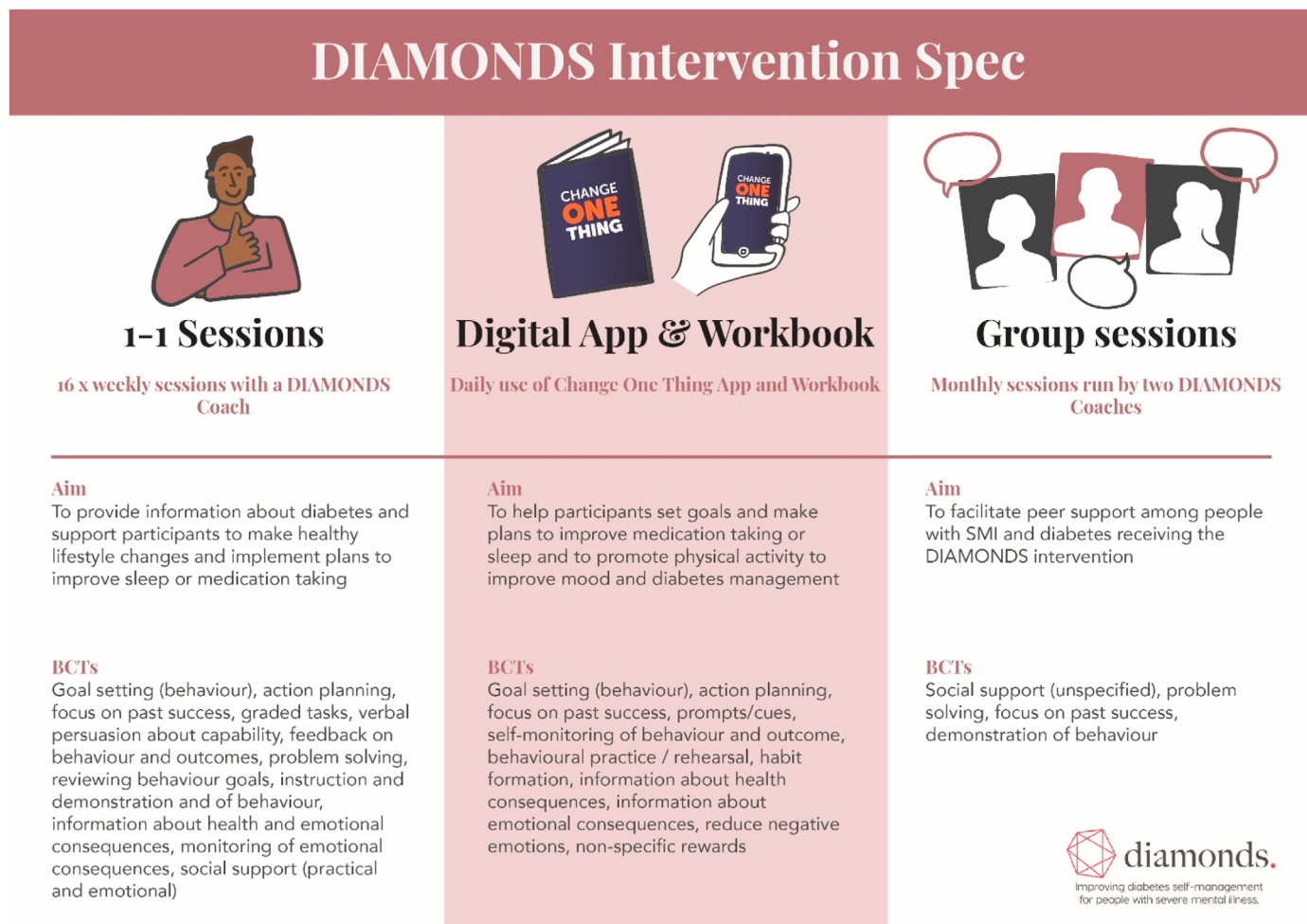


Fig. 1. The DIAMONDS intervention.

supported by the DIAMONDS Workbook and the Change One Thing app.

The intervention endpoint will be at 15 weeks after the participant's first session with their DIAMONDS Coach regardless of the number of sessions attended by the participant. Session content will not be sequential but will instead be tailored to the participant's needs; "missed" sessions will not necessarily mean that the participant misses out on intervention content. Participants will be able to continue engaging with intervention content on their own after follow-up process data are collected. From the outset, participants will be informed that sessions will stop 15 weeks after their first session. During the last month, the Coach will support participants to set longer-term goals and action plans for self-management and help them to access appropriate and existing support to implement these.

Where possible, monthly group sessions will be provided by two DIAMONDS Coaches (in a community-based venue, e.g. local town hall, community hub). Sessions will be held in the afternoons for 90 min. A healthy lunch will be provided at the start of each group session. Sessions will be attended by six to ten participants. The aim of the sessions is to facilitate peer-to-peer support among people with SMI and type 2 diabetes.

2.6. Service-user and carer involvement

Since the start of the DIAMONDS research programme in 2015, we have closely and continually collaborated with DIAMONDS Voice, a service-user and carer group dedicated to supporting this work. The group consists of approximately ten adults and includes members with severe mental illness as well as family carers. DIAMONDS Voice members have contributed critically to the intervention content as well as the development of the intervention materials (app and workbook). For this feasibility study, they reviewed all participant-facing documentation, including consent forms, invitation letters, and questionnaires, and were consulted about the acceptability of taking blood and undertaking measurements of their physical health.

2.7. Objectives 1 and 2: Testing the feasibility of study procedures

Outcomes for objective 1 (feasibility of recruitment and attrition):

- a) Recruitment rate, measured as proportion of the recruitment target (N = 30) achieved at 5 months from start of recruitment.
- b) Attrition measured as the proportion of missing outcomes data at the end of the recruitment period (5 months from start of recruitment) for physiological and self-reported data items.
- c) Intervention delivery rate recorded as the proportion of planned sessions delivered (measured by the number of completed intervention session logs per participant within 15 weeks of the first intervention session).

Outcomes for objective 2 (feasibility of data collection):

Additionally, the feasibility of quantitative data collection methods will be tested by collecting all planned primary and secondary outcomes for the main RCT as specified in Table 1.

Figure E1 (Appendix E) summarises the schedule of enrolment and recruitment, intervention delivery, and outcome assessments for this feasibility study.

Data collection: To assess the primary outcomes of this feasibility study (recruitment rate, attrition rate, and intervention delivery rate), the number of individuals approached, completing the intervention and/or signposted to other services, and providing outcome data will be recorded (along with withdrawals and, where available, reasons for withdrawal). Trained R&D staff at participating trusts will support participants to complete quantitative self-report measures as baseline and take physical measurements. Results will be recorded on standardised case report forms. Blood samples will be analysed at a centralised laboratory, with HbA1c results returned to the study team.

Table 1
Summary of data collection to be tested in the feasibility study.

Data item	Data collection method	Baseline	Follow-up
HbA1c	Measured by study team	x	-
<i>Sociodemographics</i>			
Age	Self-report	x	-
Sex	Self-report	x	-
Ethnicity	Self-report	x	-
Index of Multiple Deprivation	Determined by study team based on participant's postcode	x	-
<i>Physical health status</i>			
Date diagnosed with diabetes	Primary care records	x	-
Height	Measured by study team	x	-
Weight	Measured by study team	x	-
BMI (calculated from height and weight)	Calculated by study team	x	-
Waist circumference	Measured by study team	x	-
Blood pressure	Measured by study team	x	-
Haemoglobin ^a	Measured by study team	-	-
Cholesterol ^a	Measured by study team	-	-
Medical co-morbidities	Primary care records	x	-
Smoking status	Self-report	x	-
<i>Mental health</i>			
Type of SMI	Primary care records	x	-
Date diagnosed with SMI	Primary care records	x	-
Brief Psychiatric Rating Scale (BPRS)	Self-report	x	-
Patient Health Questionnaire-9 (PHQ-9)	Self-report	x	-
<i>Diabetes measures</i>			
Diabetes microvascular and macrovascular complications	Medical record	x	-
Diabetes distress	Self-report	x	-
Summary of Diabetes Self-Care Activities	Self-report	x	-
<i>Physical activity</i>			
International Physical Activity Questionnaire (IPAQ)	Self-report	x	-
Physical activity	Wrist-worn accelerometer	x	-
<i>Health economic outcomes</i>			
Health-related quality of life (EQ-5D-5L)	Self-report	x	-
Health resource use	Self-report & Medical records	x	-
Medication for SMI	Primary care records	x	-
Medication for diabetes	Primary care records	x	-
<i>Process evaluation measures</i>			
Mechanisms of Action questionnaire ^b	Self-report	-	x
Engagement with the Change One Thing app ^b	User data collected within the app	x	x
Acceptability of the intervention	Qualitative interviews	-	x

^a For logistical reasons it will not be possible to collect haemoglobin and cholesterol as part of this feasibility study. The feasibility of conducting blood tests is being tested through HbA1c assessment at baseline.

^b User data from the Change One Thing app will be collected throughout the intervention period while participants are engaging with the app. Information about Mechanisms of Action will be requested from participants via the app on a monthly basis and also collected at follow-up.

Objective 1 and 2 analyses: Data will be summarised descriptively using means and standard deviations (or medians and interquartile ranges) for continuous data and the frequency and proportion of events for categorical data. The number of sessions attended, and length of sessions will also be summarised. A Consolidated Standards for Reporting Trials (CONSORT) diagram will be used to display the flow of participants through the study.

To assess feasibility of quantitative data collection methods, we will record the proportion of missing data from questionnaires and case

report forms, including data missing from medical records. We will also record the proportion of participants declining any of the physical measures (height, weight, blood test) and/or the accelerometers. Further, information about any data lost due to processing issues (e.g., blood results or accelerometer data) will be reported.

2.8. Objective 3: Evaluation of acceptability and feasibility of the DIAMONDS intervention

We will use a parallel mixed-methods approach in which qualitative and quantitative data will be collected to address this objective.

Recruitment and data collection: Quantitative process data will include: 1) descriptive markers of intervention content and mode of delivery (face to face or via telephone; digital; workbook; blended; remote or in-person); 2) dosage and reach: number of completed sessions, characteristics of participants; 3) satisfaction with intervention (sessions completed, 'Did-not-attend', dropouts). The research team will conduct semi-structured in-depth interviews with participants, carers/significant others, and DIAMONDS Coaches to determine how recipients responded to and engaged with the intervention across different contexts (e.g. service settings, organisations) and to examine the extent to which the study processes (including Coach training and support) were acceptable and fit for purpose.

Participants: At the point of consenting to take part in the DIAMONDS study, participants will have indicated their willingness (or not) to be contacted about taking part in an interview. From the pool of participants who have given consent to be contacted for an interview, we will select a purposive sample of up to 15 participants to include a range of ages and genders as well as intervention completers (i.e., participants who have completed at least 50% of intervention sessions within 16 weeks) and non-completers (i.e., participants who have completed less than 50% of intervention sessions within 16 weeks). If possible, we will also use information about baseline health, comorbidities, and level of engagement with the app and workbook to inform sampling. We will work with the trust R&D teams and the DIAMONDS Coaches to identify suitable participants if necessary.

A separate consent process, including the option of verbal consent for interviews undertaken remotely, will be in place, allowing participants to make an informed decision to contribute to this part of the study. If any risk of self-harm or suicide is identified during an interview, the researcher conducting the interview will follow the DIAMONDS Self-harm/Suicide Risk Protocol.

Interviews will last approximately 45 min and will explore experiences of recruitment, study procedures, and acceptability of the intervention (including important elements of the intervention and delivery).

Carers: We will aim to conduct interviews with seven carers, with interviews lasting approximately 45 min. For the purposes of this study, informal carers are defined as unpaid carers who are not subject to working regulations and provide support to a dependent person who they have a social relationship with, such as a spouse, other relative, neighbour, friend or other non-kin. Care includes support with household chores or other practical errands, transport to doctors or social visits, social companionship, emotional guidance, or help with arranging professional care (The King's Fund, 2006).

Carers will be given information about the interviews and full informed consent will be taken (verbally if necessary) before the start of the interview. Participants and carers will be interviewed alone to enable separate accounts to be generated. However, patients and carers may commonly wish to be interviewed together and in these cases, interviews will be run in a dyadic fashion. While dyadic patient-carer interviews can impose limits on response, they can also maximise opportunities for participants to co-construct their narratives about their experiences of the intervention and offer similar benefits to focus groups (Morgan, 2012).

DIAMONDS Coaches: We will aim to interview between five and ten Coaches, aiming for interview participation from at least one Coach from

each participating study site as well as a range of NHS bands. We will aim to also interview Coaches who left the role before the end of the intervention delivery phase to learn about reasons for their withdrawal. To avoid any potential coercion from employers or co-workers, the research team, who are independent of employers, will approach Coaches to participate in semi-structured interviews. Informed consent will be secured from Coaches before the start of the interview. Coach interviews are expected to last approximately 30 min and will explore questions around the experience of being trained as a DIAMONDS Coach and delivering the intervention to study participants. Feedback on study and data collection procedures will also be sought and engagement with Coach support (mentoring calls, "booster" training sessions) recorded.

Objective 3 analysis: All interview data will be audio recorded (where appropriate; if not, extensive notes will be taken), transcribed verbatim (by a contracted third party) and analysed thematically using a Framework approach (Gale et al., 2013). This process will draw on the theoretical framework of acceptability (TFA) that offers a robust and evidence-based approach to defining and evaluating anticipated and experienced forms of intervention delivery from the perspective of users and facilitators (Sekhon et al., 2017). An initial coding framework will be developed, and transcripts checked against the framework to ensure that there are no significant omissions. Codes in each interview will be examined across individual transcripts as well as across the entire data set and allocated to the framework. Using aspects of the constant comparative method of analysis, broader categories using linking codes will be developed across interviews. Analysis will be guided by drawing on the theoretical foundations of the intervention and the findings from systematic reviews about determinants of self-management behaviour in SMI.

2.9. Objective 4: Exploratory Economic Analysis

An exploratory economic analysis will be conducted to evaluate the feasibility of collecting resource use and health-related quality of life data for the economic evaluation in the future RCT. As part of baseline assessment, participants will complete a service use questionnaire recording their utilisation of health (primary and secondary care) and social care resources. This will be complemented by a review of medical records. We will assess the results from both techniques to inform future data collection in the RCT.

Objective 4 analysis: To determine if questions about healthcare use may need to be adapted, the questionnaire response rates and the rate of missing data at item-level will be evaluated. The accuracy of the responses and the response consistency within the same participant will be checked to ensure that the questionnaires and the wording can yield accurate and reliable results. Both resource use (including intervention costs) and health-related quality of life outcomes will be summarised descriptively.

2.10. Objective 5: Acceptability and feasibility of continuous glucose monitors

We will embed (as part of a PhD study led by JVEB), an evaluation of the acceptability of wearing continuous glucose monitors (CGMs). While use of CGMs is becoming increasingly widespread to support the self-management of diabetes across a range of populations, there is no evidence about the feasibility and acceptability of using this technology among people with diabetes and comorbid SMI. To address this gap in the evidence, we are planning an embedded mixed-methods evaluation of the acceptability and feasibility of the Abbott Freestyle Libre Pro (Ajjan et al., 2019) sensor within the DIAMONDS feasibility study. This is a blinded glucose sensor that is worn for 14 days, does not require calibration and provides 96 glucose readings/day (i.e. up to 1344 glucose readings per sensor). Using unblinded glucose sensors was considered but concerns were raised over potential anxiety related to the glucose readings and it was decided to use a blinded sensor in the first instance.

Recruitment and data collection: All participants will be asked to wear a blinded continuous glucose monitor (Abbott Freestyle Libre Pro) following the 16-week DIAMONDS intervention period. Sensors will be affixed to the participant's upper arm by appropriately trained staff at the participating study sites. Participants will be asked to leave the sensor in place for 14 days and then return it to the study team for data download and analysis. Participants will remain blinded to the data collected by the sensor throughout.

Subsequently, participants and their informal carers will be asked to participate in semi-structured interviews to discuss their experience of having the sensor fitted, wearing, and removing the sensor as well as any problems they might have experienced with it. The interviews will also provide a chance to collect information about participants' and carers' attitudes about using technology to support self-management of their health more generally, e.g. through the use of wearables, such as activity trackers, or fitness or diet apps. Both participants who agreed to wear a continuous glucose monitor and those who declined will be invited for an interview.

The interviews about the continuous glucose monitors and attitudes towards technology-supported self-management will be separate from the process evaluation interviews as described previously.

Objective 5 analysis: To quantitatively assess the acceptability of the continuous glucose monitors, we will record the proportion of participants agreeing to wear a sensor, the average wear-period, the proportion of participants completing at least ten days of wear and of those completing at least five days, the number of sensors not returned, and any adverse events or side effects reported. In addition, the data collected by the sensors will be used to produce ambulatory glucose profiles that will be further shown to study participants to help explain their glucose profile. As per international guidance, time-in-range data will be saved, together with glycaemic variability (measured as the coefficient of variation) and hypoglycaemic exposure (Battelino et al., 2019), while also recording HbA1c values. Due to the small sample size, these data will be summarised descriptively without any formal statistical analysis.

The same methods for recording and transcribing will be used for the interviews about CGMs as described for the interviews relating to the acceptability of the intervention. Similarly, a framework analysis approach will also be used for the CGM interviews drawing on the TFA to guide analysis. The coding will further be informed by findings from a systematic review of the acceptability of continuous glucose monitors with the most salient points identified in collaboration with DIAMONDS Voice. The focus of the analysis will be exclusively on the experience of wearing a CGM and attitudes about technology-supported self-management irrespective of thoughts or feelings about the DIAMONDS study or intervention.

2.11. Objective 6: development of the intervention fidelity framework

Assessing fidelity of a complex intervention such as the DIAMONDS intervention is important in order to increase confidence in the interpretation of study results (Bellg et al., 2004). With this in mind, we will adapt tools and content from previous self-management programmes for long-term conditions, and use discussions with the study team, early findings from the feasibility study, the Coach training materials, and the intervention specification to determine the key components to include in the intervention fidelity framework. The framework will be developed iteratively and feasibility tested, in preparation for the main DIAMONDS RCT.

The intervention fidelity framework will consist of elements to measure: (i) adherence (whether the content of the intervention sessions was delivered as it was designed, including BCTs); (ii) dose (number of sessions delivered); (iii) quality of delivery of intervention sessions (BCTs and the manner/behaviour [both prescribed and proscribed] in which the coach delivers the programme); (iv) duration of the programme sessions (have the sessions been delivered within the estimated time?); and (v) participant responsiveness to the DIAMONDS intervention (was

the intervention understood and 'received' by participants?).

Objective 6 data collection and analysis: In order to develop and refine the intervention fidelity tools (i.e. Coach behaviour checklists) used to assess the fidelity of Coach delivery, we will evaluate a sample of up to 10% of sessions (1:1 and group). Remote observation methods (e.g. through audio or video recording coaching sessions on encrypted devices) will be used for 1:1 sessions. Direct observations of group sessions will be carried out, unless COVID-19 restrictions prevent this; in which case they will be audio recorded. Trained assessors will use the intervention fidelity tools while observing/listening to the sample sessions. Three assessors will evaluate the recordings, check for consistency in scores and refine the tools where necessary until agreement is achieved so the tools are ready for use in a future RCT. Method of evaluation (e.g. direct observation or audio recordings) will also be documented to find out what is feasible for the main trial.

Refinement of the Coach training and Coach manual will be informed by findings from the qualitative interviews with coaches and participants (see objective 3 for further details); evaluation (pre- and post-) questionnaires of training (content, satisfaction, confidence with their role as a Coach); and group feedback with the Coaches post-training (sharing experience of the training and resources). Participant receipt will be measured via process evaluation/qualitative interviews. This will include specific determinants of self-management (e.g. participant engagement in writing their own action plan; cognitive strategies and behavioural skills used). This will enhance fidelity for the RCT.

2.12. Progression criteria

Progression from the feasibility study to the RCT will be contingent on achieving:

1. Recruitment of at least 20 participants with Red-Amber-Green stop-go ratings based on <20 participants (Red); 20–25 (Amber); 26–30 (Green).
2. At least 50% of the intervention sessions delivered to 80% of participants.
3. Development of a coach training package.
4. Development of an intervention fidelity framework.
5. A self-management intervention that is acceptable and feasible to patients and Coaches. Any necessary modifications identified will be made prior to progression to a definitive trial.

3. Discussion

There is ample evidence showing that people with SMI experience substantial health inequalities that result in greater ill health, poorer quality of life, and reduced life expectancy than the general population. This so-called mortality gap is mainly driven by excess deaths among people with SMI attributable to preventable physical LTCs. The causes are complex and relate to behavioural factors (e.g. people with SMI are less likely to be non-smokers), social determinants such as unemployment and poor housing, the metabolic side effects of antipsychotic medication, and system level factors associated with disjointed care between physical and mental health teams, as well as primary and secondary care, and a lack of access to bespoke support (Carswell et al., 2021; Han et al., 2021; Bellass et al., 2021). However, there is now an emerging consensus that tackling excess mortality among people with SMI is a public health priority that demands interventions at the individual, system, and community level (Liu et al., 2017).

We have mapped the mechanisms of action of health behaviours associated with physical health using the novel MoA framework to prompt identification of candidate behaviour change techniques with empirical evidence of effectiveness for managing LTCs (Coventry et al., 2021). Building on these findings and working with service users, carers, and healthcare professionals, we have developed an intervention to support people with SMI to self-manage type 2 diabetes. Before

proceeding to test the clinical and cost effectiveness of our novel intervention, it is imperative that we first test the feasibility and acceptability of study procedures and intervention content and delivery. The main DIAMONDS RCT, which is planned to open for recruitment in 2022, will be one of the largest trials including people with SMI nationwide with a recruitment target of over 400 participants.

Research aimed at reducing health inequalities and the mortality gap is often considered challenging. However, we have previously shown that people with SMI are willing to participate in research and behavioural interventions have met with some success in reducing risk behaviours associated with poor physical health and premature mortality (Gilbody et al., 2019). The DIAMONDS programme builds on this previous learning and maintains a critical focus on developing interventions to improve the physical health of people with SMI.

Furthermore, this feasibility study will also provide a platform to test out novel and innovative self-monitoring health technologies in the context of SMI and diabetes. There is a body of evidence to suggest that people with SMI engage differently with healthcare systems than the general population (Becker & Hux, 2011; Chadwick et al., 2012; De Hert et al., 2011; Karim et al., 2021; van Hasselt et al., 2013/10). As such, it is important that they are included in research from an early stage to make sure they are not left behind in clinical and research innovations which could lead to a widening of the health inequalities already faced by this group (Kaufman et al., 2012b; Roberts and Bailey, 2011b, 2013b). To our knowledge, our study will be the first time that people with SMI have been invited to wear a continuous glucose monitor and share their feedback about their utility and acceptability.

3.1. Dissemination plan

As part of our dissemination plan for this feasibility study, we will work with DIAMONDS Voice, our service-user and carer group, to communicate key milestones on social media and our project website. Where appropriate, DIAMONDS Voice members will be involved in the production and presentation of academic outputs, such as journal publications and conference submissions. We will continue to share findings and progress with our regional, national, and international networks through the DIAMONDS newsletter.

3.2. COVID-19 contingency planning

The COVID-19 pandemic has reduced capacity in the NHS to support non-COVID clinical research, limiting the scope of this feasibility study. The single-group design preserves opportunities to test intervention feasibility and acceptability as well as feasibility of study procedures with reduced burden on the NHS. Strong evidence supports the feasibility of recruiting and randomising individuals with SMI and LTCs to trials of complex interventions (STEPWISE (Holt et al. 2019), SCIMITAR+ (Gilbody et al., 2019)), offering crucial intelligence about the optimal ways to recruit to target in the context of randomised controlled trials for people with SMI. Additionally, the definitive DIAMONDS trial will include an internal pilot phase which will offer the means to check and refine strategies to recruit to target.

Funding/role of the funder

This project is funded by the National Institute for Health Research (NIHR) Programme for Applied Research (project number RP-PG-1016-20003). The views and opinions expressed therein are those of the authors and do not necessarily reflect those of the NHS, NIHR, or the Department of Health. The NIHR did not have any involvement in the study design or the decision to submit the article for publication.

Declaration of competing interest

The authors declare that they have no known competing financial

interests or personal relationships that could have appeared to influence the work reported in this paper.

Acknowledgments

On behalf of the DIAMONDS Research Team we would like to thank DIAMONDS Voice, our service user and carer group, for their continued, enthusiastic, and expert contribution to the DIAMONDS Research Programme and specifically the participant-facing documents to be used in this study. We would also like to thank the NIHR Clinical Research Network Yorkshire & Humber for their continued support. Furthermore, we would like to thank our partners within the NHS for agreeing to be part of this study.

Appendix A. Supplementary data

Supplementary data to this article can be found online at <https://doi.org/10.1016/j.ssmmh.2022.100086>.

References

- Ajjan, R. A., Jackson, N., & Thomson, S. A. (2019). Reduction in HbA1c using professional flash glucose monitoring in insulin-treated type 2 diabetes patients managed in primary and secondary care settings: A pilot, multicentre, randomised controlled trial. *Diabetes and Vascular Disease Research*, 16(4), 385–395.
- , *Taking Control: Supporting people to self-manage their diabetes*All-party parliamentary group for diabetes.(2015), 28/02/2017.
- Aschbrenner, K., Carpenter-Song, E., Mueser, K., Kinney, A., Pratt, S., & Bartels, S. (Apr 2013). A qualitative study of social facilitators and barriers to health behavior change among persons with serious mental illness. *Community Mental Health Journal*, 49(2), 207–212.
- Balogun-Katung, A., Carswell, C., Brown, JVE, Coventry, P, Ajjan, R, Alderson, S, , ... Taylor, J, & The DIAMONDS Research Team. (2021). Exploring the facilitators, barriers, and strategies for self-management in adults living with severe mental illness, with and without long-term conditions: A qualitative evidence synthesis. *PLoS One*, 16(10), e0258937. <https://doi.org/10.1371/journal.pone.0258937>
- Battelino, T., Danne, T., Bergenstal, R.M., Amiel, S.A., Beck, R., Biester, T., , ... Heller, S, et al. (2019). Clinical targets for continuous glucose monitoring data interpretation: Recommendations from the international consensus on time in range. *Diabetes Care*, dci190028.
- Becker, T., & Hux, J. (2011). Risk of acute complications of diabetes among people with schizophrenia in ontario, Canada. *Diabetes Care*, 34(2), 398–402.
- Bellass, S., Lister, J., Kitchen, CEW, Kramer, L., Alderson, SL, Doran, T, & Taylor, J (2021). Living with diabetes alongside a severe mental illness: A qualitative exploration with people with severe mental illness, family members and healthcare staff. *Diabetic Medicine*, 38(7), e14562. <https://doi.org/10.1111/dme.14562>, 07/01 2021.
- Bellg, AJ, Borrelli, B, Resnick, B, Hecht, J, Sharp Minicucci, D, Ory, M, Czajkowski, S, & Treatment Fidelity Workgroup of the NIH Behavior Change Consortium. (Sep 2004). Enhancing treatment fidelity in health behavior change studies: Best practices and recommendations from the NIH behavior change consortium. *Health Psychology*, 23(5), 443–451.
- Billingham, S. A. M., Whitehead, A. L., & Julious, S. A. (2013). An audit of sample sizes for pilot and feasibility trials being undertaken in the United Kingdom registered in the United Kingdom Clinical Research Network database. *BMC Medical Research Methodology*, 13(1), 104, 2013/08/20.
- Brown, S., Kim, M., Mitchell, C., & Inskip, H. (Feb 2010). Twenty-five year mortality of a community cohort with schizophrenia. *British Journal of Psychiatry*, 196(2), 116–121.
- Cane, J., O'Connor, D., & Michie, S. (2012). Validation of the theoretical domains framework for use in behaviour change and implementation research. *Implementation Science*, 7(1), 37. /04/24 2012.
- Carey, RN, Connell, LE, Johnston, M, Rothman, AJ, de Bruin, M, Kelly, MP, & Michie, S (2019). Behavior change techniques and their mechanisms of action: A synthesis of links described in published intervention literature. *Annals of Behavioral Medicine*, 53(8), 693–707.
- Carswell, C., Brown, JVE, Balogun, AO, Taylor, J, Coventry, P, Kitchen, CEW, ... Siddiqi, N (2021). Exploring determinants of self-management in adults with severe mental illness: A qualitative evidence synthesis. *BJPsych Open*, 7(S1). S13-S13.
- Chadwick, A., Street, C., McAndrew, S., & Deacon, M. (2012). Minding our own bodies: Reviewing the literature regarding the perceptions of service users diagnosed with serious mental illness on barriers to accessing physical health care. *International Journal of Mental Health Nursing*, 21(3), 211–219.
- Chen, S. R., Chien, Y. P., Kang, C. M., Jeng, C., & Chang, W. Y. (Jun 2014). Comparing self-efficacy and self-care behaviours between outpatients with comorbid schizophrenia and type 2 diabetes and outpatients with only type 2 diabetes. *Journal of Psychiatric and Mental Health Nursing*, 21(5), 414–422.
- Chrvala, C. A., Sherr, D., & Lipman, R. D. (Jun 2016). Diabetes self-management education for adults with type 2 diabetes mellitus: A systematic review of the effect on glycemic control. *Patient Education and Counseling*, 99(6), 926–943.

- Chwastiak, L.A., Freudenreich, O., Tek, C., McKibbin, C., Han, J., McCarron, R., & Wisse, B. (2015). Clinical management of comorbid diabetes and psychotic disorders. *The Lancet Psychiatry*, 2(5), 465–476.
- Coventry, P.A., Young, B., Balogun-Katung, A., Taylor, J., Brown, J.V.E., Kitchen, C., ... Siddiqi, N., & The DIAMONDS Research Team. (2021). Determinants of physical health self-management behaviours in adults with serious mental illness: A systematic review. *Frontiers in Psychiatry, Systematic Review*, 12(1423).
- Davies, M.J., Heller, S., Skinner, T.C., Campbell, M.J., Carey, M.E., Craddock, S., ... Khunti, K., & Diabetes Education and Self Management for Ongoing and Newly Diagnosed Collaborative. (2008). Effectiveness of the diabetes education and self management for ongoing and newly diagnosed (DESMOND) programme for people with newly diagnosed type 2 diabetes: Cluster randomised controlled trial. *BMJ*, 336(7642), 491–495.
- Davis, L., & Brekke, J. (Jan 30 2014). Social support and functional outcome in severe mental illness: The mediating role of proactive coping. *Psychiatry Research*, 215(1), 39–45.
- De Hert, M., Cohen, D., Bobes, J., Cetkovich-Bakmas, M., Leucht, S., Ndeti, D.M., ... Correll, C.U. (2011). Physical illness in patients with severe mental disorders. II. Barriers to care, monitoring and treatment guidelines, plus recommendations at the system and individual level. *World Psychiatry*, 10(2), 138–151.
- De Hert, M., Dekker, J. M., Wood, D., Kahl, K. G., Holt, R. I., & Moller, H. J. (Sep 2009). Cardiovascular disease and diabetes in people with severe mental illness position statement from the European Psychiatric Association (EPA), supported by the European Association for the Study of Diabetes (EASD) and the European Society of Cardiology (ESC). *European Psychiatry*, 24(6), 412–424.
- Diabetes, U. K. (2009). *Improving supported self-management for people with diabetes*, 31/03/2017.
- England, N. H. S. (2014). *Action for diabetes*, 28/03/2017.
- Fan, L. F., & Sidani, S. (Mar 2009). Effectiveness of diabetes self-management education intervention elements: A meta-analysis. *Canadian Journal of Diabetes*, 33(1), 18–26.
- Firth, J., Rosenbaum, S., Stubbs, B., Gorcezynski, P., Yung, A. R., & Vancampfort, D. (Oct 2016). Motivating factors and barriers towards exercise in severe mental illness: A systematic review and meta-analysis. *Psychological Medicine*, 46(14), 2869–2881.
- Gale, N. K., Heath, G., Cameron, E., Rashid, S., & Redwood, S. (2013/09/18 2013). Using the framework method for the analysis of qualitative data in multi-disciplinary health research. *BMC Medical Research Methodology*, 13(1), 117.
- Digital service standard. (2017). Government Digital Service, 23/03/2017.
- Gilbody, S., Peckham, E., Bailey, D., Arundel, C., Heron, P., Crosland, S., ... Reilly, J., et al. (May 2019). Smoking cessation for people with severe mental illness (SCIMITAR+): A pragmatic randomised controlled trial. *The Lancet Psychiatry*, 6(5), 379–390.
- Han, L., Doran, T., Holt, R.I.G., Hewitt, C., Jacobs, R., Prady, S.L., ... Siddiqi, N. (2021). Impact of severe mental illness on healthcare use and health outcomes for people with type 2 diabetes: A longitudinal observational study in England. *British Journal of General Practice*, 71(709), e565–e573.
- Harvey, P. D. (Oct 2011). Mood symptoms, cognition, and everyday functioning: In major depression, bipolar disorder, and schizophrenia. *Innovations in Clinical Neuroscience*, 8(10), 14–18.
- Tricco, A.C., Ivers, N.M., Grimshaw, J.M., Moher, D., Turner, L., Galipeau, J., & Shojania, K. (2012). Effectiveness of quality improvement strategies on the management of diabetes: A systematic review and meta-analysis. *Lancet*, 379(9833), 2252–2261.
- van Hasselt, F. M., Oud, M. J. T., & Loonen, A. J. M. (2013/10/21 2013). Improvement of care for the physical health of patients with severe mental illness: A qualitative study assessing the view of patients and families. *BMC Health Services Research*, 13(1), 426.
- Hoffmann, T.C., Gaszious, P.P., Boutron, I., Milne, R., Perera, R., Moher, D., ... Michie, S. (2014). Better reporting of interventions: Template for intervention description and replication (TIDieR) checklist and guide. *BMJ British Medical Journal*, 348, g1687.
- Holt, R.I.G., Gossage-Worrall, R., Hind, D., Bradburn, M.J., McCrone, P., Morris, T., ... Laugharne, R., et al. (Feb 2019). Structured lifestyle education for people with schizophrenia, schizoaffective disorder and first-episode psychosis (STEPWISE): Randomised controlled trial. *British Journal of Psychiatry*, 214(2), 63–73.
- Holt, R. I. (2012). Cardiovascular disease and diabetes in people with severe mental illness : Causes, consequences and pragmatic management : Review," South African journal of diabetes and vascular disease. *Journal Article*, 9(3), 107–111.
- International Organization for Standardization. (2015). *ISO 9241-210:2010 Ergonomics of human-system interaction – Part 210: Human-centred design for interactive systems*. /03/2017.
- Karim, M.A., Al-Baz, N., Ouane, S., Khalil, A., Assar, A.H., Alsiddiqi, A., ... Haddad, P.M. (2021). Quality of diabetes care in patients with schizophrenia: A case-control study in Qatar. *BMC Psychiatry*, 21(1), 149, 2021.
- Kaufman, E. A., McDonell, M. G., Cristofalo, M. A., & Ries, R. K. (2012b). Exploring barriers to primary care for patients with severe mental illness: Frontline patient and provider accounts. *Issues in Mental Health Nursing*, 33(3), 172–180. /02/28 2012.
- Kaufman, E. A., McDonell, M. G., Cristofalo, M. A., & Ries, R. K. (Mar 2012). Exploring barriers to primary care for patients with severe mental illness: Frontline patient and provider accounts. *Issues in Mental Health Nursing*, 33(3), 172–180.
- Liu, N.H., Daumit, G.L., Dua, T., Aquila, R., Charlson, F., Cuijpers, P., ... Prabhakaran, D., et al. (2017). Excess mortality in persons with severe mental disorders: A multilevel intervention framework and priorities for clinical practice, policy and research agendas. *World Psychiatry*, 16(1), 30–40.
- Loveman, E., Frampton, G. K., & Clegg, A. J. (Apr 2008). The clinical effectiveness of diabetes education models for type 2 diabetes: A systematic review. *Health Technology Assessment*, 12(9), 1–116. iii.
- McBain, H., Mulligan, K., Haddad, M., Flood, C., Jones, J., & Simpson, A. (Apr 27 2016). Self management interventions for type 2 diabetes in adult people with severe mental illness. *Cochrane Database of Systematic Reviews*, 4(4), CD011361.
- Mercer, S. W., Gunn, J., Bower, P., Wyke, S., & Guthrie, B. (Sep 3 2012). Managing patients with mental and physical multimorbidity. *BMJ*, 345, e5559.
- Morgan, M. D. (2012). Focus groups and social interaction. In J. Gubrium, & J. Holstein (Eds.), *Handbook of interview research* (2nd ed., pp. 161–176). Thousand Oaks: CA: Sage.
- National Institute for Health and Clinical Excellence (NICE). (2015). *Type 2 diabetes in adults: Management*. NICE guideline [NG28].
- National Institute for Health and Clinical Excellence (NICE). (2016). *Multimorbidity: Clinical assessment and management NICE guideline (NG 56)*. NICE, London.
- Newman, S., Steed, L., & Mulligan, K. (1523). Self-management interventions for chronic illness. *Lancet*, 364(9444), 1523–1537. Oct 23-29.
- NHS Digital. (2021, 10 August). *Quality Outcomes Framework (QOF) - disease prevalence and care quality achievement rates*. Available: <https://digital.nhs.uk/data-and-information/data-tools-and-services/data-services/general-practice-data-hub/quality-outcomes-framework-qof>.
- Nobis, S., Lehr, D., Ebert, D.D., Baumeister, H., Snoek, F., Ripper, H., & Berking, M. (2015). Efficacy of a web-based intervention with mobile phone support in treating depressive symptoms in adults with type 1 and type 2 diabetes: A randomized controlled trial. *Diabetes Care*, 38(5), 776–783.
- Norris, S. L., Engelgau, M. M., & Narayan, K. M. (Mar 2001). Effectiveness of self-management training in type 2 diabetes: A systematic review of randomized controlled trials. *Diabetes Care*, 24(3), 561–587.
- Osborn, D., Burton, A., Hunter, R., Marston, L., Atkins, L., Barnes, T., ... Peveler, R., et al. (2018). Clinical and cost-effectiveness of an intervention for reducing cholesterol and cardiovascular risk for people with severe mental illness in English primary care: A cluster randomised controlled trial. *The Lancet Psychiatry*, 5(2), 145–154.
- Osborn, D. P., Levy, G., Nazareth, I., Petersen, I., Islam, A., & King, M. B. (Feb 2007). Relative risk of cardiovascular and cancer mortality in people with severe mental illness from the United Kingdom's General Practice Research Database. *Archives of General Psychiatry*, 64(2), 242–249.
- Powers, M.A., Bardsley, J., Cypress, M., Duker, P., Funnell, M.M., Hess Fischl, A., ... Vivian, E. (2015). Diabetes self-management education and support in type 2 diabetes: A joint position statement of the American diabetes association, the American association of diabetes educators, and the academy of nutrition and dietetics. *Diabetes Care*, 38(7), 1372–1382.
- Reilly, S., Olier, I., Planner, C., Doran, T., Reeves, D., Ashcroft, D.M., ... Kontopantelis, E. (2015). Inequalities in physical comorbidity: A longitudinal comparative cohort study of people with severe mental illness in the UK. *BMJ Open*, 5(12), e009010. December 1, 2015.
- Roberts, S. H., & Bailey, J. E. (2011b). Incentives and barriers to lifestyle interventions for people with severe mental illness: A narrative synthesis of quantitative, qualitative and mixed methods studies. *Journal of Advanced Nursing*, 67(4), 690–708.
- Roberts, S. H., & Bailey, J. E. (2013b). An ethnographic study of the incentives and barriers to lifestyle interventions for people with severe mental illness. *Journal of Advanced Nursing*, 69(11), 2514–2524.
- Roberts, S. H., & Bailey, J. E. (Apr 2011). Incentives and barriers to lifestyle interventions for people with severe mental illness: A narrative synthesis of quantitative, qualitative and mixed methods studies. *Journal of Advanced Nursing*, 67(4), 690–708.
- Roberts, S. H., & Bailey, J. E. (Nov 2013). An ethnographic study of the incentives and barriers to lifestyle interventions for people with severe mental illness. *Journal of Advanced Nursing*, 69(11), 2514–2524.
- Ruggeri, M., Leese, M., Thornicroft, G., Bisoffi, G., & Tansella, M. (Aug 2000). Definition and prevalence of severe and persistent mental illness. *British Journal of Psychiatry*, 177, 149–155.
- Schoepf, D., Potluri, R., Uppal, H., Natalwala, A., Narendran, P., & Heun, R. (Jan 2012). Type-2 diabetes mellitus in schizophrenia: Increased prevalence and major risk factor of excess mortality in a naturalistic 7-year follow-up. *European Psychiatry*, 27(1), 33–42.
- Sekhon, M., Cartwright, M., & Francis, J. J. (2017/01/26 2017). Acceptability of healthcare interventions: An overview of reviews and development of a theoretical framework. *BMC Health Services Research*, 17(1), 88.
- Smith, R., Han, L., Ali, S., Prady, S. L., Taylor, J., Hughes, T., Ajjan, R. A., Siddiqi, N., & Doran, T. (2019). Glucose, cholesterol and blood pressure in type II diabetes: A longitudinal observational study comparing patients with and without severe mental illness. *Journal of Psychiatric and Mental Health Nursing*, 26(9–10), 347–357. <https://doi.org/10.1111/jpm.12546>
- Steinsbekk, A., Rygg, L. O., Lisulo, M., Rise, M. B., & Fretheim, A. (Jul 23 2012). Group based diabetes self-management education compared to routine treatment for people with type 2 diabetes mellitus. A systematic review with meta-analysis. *BMC Health Services Research*, 12, 213.
- The DIAMONDS Research Team. (2021). *Diamonds - improving diabetes self-management and outcomes for people with severe mental illness*. Available: <http://www.diamondscollaboration.org.uk/>.
- The King's Fund. (2014). *Experience-based co-design toolkit* (Vol. 25). /05/2016.
- The King's Fund. (2006). *Informal care in England*.
- Vinogradova, Y., Coupland, C., Hippisley-Cox, J., Whyte, S., & Penny, C. (Oct 2010). Effects of severe mental illness on survival of people with diabetes. *British Journal of Psychiatry*, 197(4), 272–277.
- Ward-Horner, J., & Sturme, P. (2010). Component analyses using single-subject experimental designs: A review. *Journal of Applied Behavior Analysis*, 43(4), 685–704.
- Ward, M., & Druss, B. (May 2015). The epidemiology of diabetes in psychotic disorders. *The Lancet Psychiatry*, 2(5), 431–451.

- Worswick, J, Wayne, SC, Bennett, R, Fiander, M, Mayhew, A, Weir, MC, ... Grimshaw, JM (2013). Improving quality of care for persons with diabetes: An overview of systematic reviews - what does the evidence tell us? *Systematic Reviews*, 2, 26.
- Wu, C. S., Lai, M. S., & Gau, S. S. (Nov 2015). Complications and mortality in patients with schizophrenia and diabetes: Population-based cohort study. *British Journal of Psychiatry*, 207(5), 450–457.
- Wykes, T. L., Lee, A. A., McKibbin, C. L., & Laurent, S. M. (Apr 2016). Self-efficacy and hemoglobin A1C among adults with serious mental illness and type 2 diabetes: The roles of cognitive functioning and psychiatric symptom severity. *Psychosomatic Medicine*, 78(3), 263–270.