










# An ALMA study of hub-filament systems – I. On the clump mass concentration within the most massive cores

Michael Anderson <sup>1,★</sup>, Nicolas Peretto <sup>1</sup>, Sarah E. Ragan <sup>1</sup>, Andrew J. Rigby <sup>1</sup>, Adam Avison <sup>2,3</sup>,  
Ana Duarte-Cabral <sup>1</sup>, Gary A. Fuller <sup>2</sup>, Yancy L. Shirley,<sup>4</sup> Alessio Traficante <sup>5</sup> and Gwenllian  
M. Williams <sup>6</sup>

<sup>1</sup>*School of Physics and Astronomy, Cardiff University, Queens Buildings, The Parade, Cardiff CF24 3AA, UK*

<sup>2</sup>*Jodrell Bank Centre for Astrophysics, Department of Physics and Astronomy, School of Natural Sciences, The University of Manchester, Oxford Road, Manchester M13 9PL, UK*

<sup>3</sup>*UK Atacama Large Millimeter/submillimeter Array Regional Centre Node, Manchester M13 9PL, UK*

<sup>4</sup>*Steward Observatory, University of Arizona, 933 North Cherry Avenue, Tucson, AZ 85721, USA*

<sup>5</sup>*IAPS-INAF, Via Fosso del Cavaliere, 100, I-00133 Rome, Italy*

<sup>6</sup>*Centre for Astrophysics Research, Department of Physics, Astronomy and Mathematics, University of Hertfordshire, College Lane, Hatfield AL10 9AB, UK*

Accepted 2021 September 7. Received 2021 September 7; in original form 2021 February 26

## ABSTRACT

The physical processes behind the transfer of mass from parsec-scale clumps to massive star-forming cores remain elusive. We investigate the relation between the clump morphology and the mass fraction that ends up in its most massive core (MMC) as a function of infrared brightness, i.e. a clump evolutionary tracer. Using Atacama Large Millimeter/submillimeter Array (ALMA) 12 m and Atacama Compact Array, we surveyed six infrared dark hubs in 2.9 mm continuum at  $\sim 3$  arcsec resolution. To put our sample into context, we also re-analysed published ALMA data from a sample of 29 high-mass surface density ATLASGAL sources. We characterize the size, mass, morphology, and infrared brightness of the clumps using *Herschel* and *Spitzer* data. Within the six newly observed hubs, we identify 67 cores, and find that the MMCs have masses between 15 and 911  $M_{\odot}$  within a radius of 0.018–0.156 pc. The MMC of each hub contains 3–24 per cent of the clump mass ( $f_{\text{MMC}}$ ), becoming 5–36 per cent once core masses are normalized to the median core radius. Across the 35 clumps, we find no significant difference in the median  $f_{\text{MMC}}$  values of hub and non-hub systems, likely the consequence of a sample bias. However, we find that  $f_{\text{MMC}}$  is  $\sim 7.9$  times larger for infrared dark clumps compared to infrared bright ones. This factor increases up to  $\sim 14.5$  when comparing our sample of six infrared dark hubs to infrared bright clumps. We speculate that hub-filament systems efficiently concentrate mass within their MMC early on during its evolution. As clumps evolve, they grow in mass, but such growth does not lead to the formation of more massive MMCs.

**Key words:** methods: observational – techniques: interferometric – stars: formation – stars: massive – ISM: clouds – submillimetre: ISM.

## 1 INTRODUCTION

Understanding what physical processes determine the mass of stars is an active area of astrophysics research. The similarity between the shape of the mass distribution of prestellar cores identified in nearby star-forming regions and that of the initial mass function of stars suggests that the latter may be inherited from the former, with a one to one correlation between core and stellar masses, and a uniform core to star formation efficiency across all core masses of  $\sim 30$  per cent (e.g. Motte, Andre & Neri 1998; Johnstone et al. 2001; Nutter & Ward-Thompson 2007; Könyves et al. 2010, 2015). The determination of stellar masses via core accretion is often referred to as *core-fed* accretion (e.g. Wang et al. 2010). As a result of the analysis of *Herschel* observations of Gould belt star-forming regions (André et al. 2010), it has been proposed that the mass of cores is,

in turn, determined by the fragmentation of gravitationally unstable filaments whose local Jeans mass is  $\sim 1 M_{\odot}$ , i.e. the peak of the core mass function (CMF) in these regions (André et al. 2010, 2014, 2019; Roy et al. 2015).

While the scenario described above might be relevant for determining the masses of low-mass cores and stars, it seems rather inappropriate when it comes to the formation of the most massive stars ( $M_{\star} > 8 M_{\odot}$ ). The most massive prestellar cores identified in the far-infrared and submillimetre surveys of Gould Belt regions are typically about  $10 M_{\odot}$  (Könyves et al. 2015, 2020), implying a stellar mass of about  $3 M_{\odot}$  when accounting for the core to star formation efficiency derived by the same authors. Much more massive prestellar cores, typically  $30 M_{\odot}$  and above, would need to be found in order to form massive stars in a core-fed-type scenario. Searches for such massive cores have now failed to find a significant population (e.g. Motte et al. 2007; Sanhueza et al. 2019; Svoboda et al. 2019), and as of today only a few exceptional cases are known (e.g. Cyganowski et al. 2014; Nony et al. 2018), despite an ever-increasing data

\* E-mail: [michael.anderson@astro.cf.ac.uk](mailto:michael.anderson@astro.cf.ac.uk)

base of high-angular resolution observations of cold and compact sources.

Recently, Peretto et al. (2020) have used (sub)millimetre dust continuum observations of Galactic plane star-forming regions to show that the evolution of massive compact sources ( $m_{\text{gas}} > 30 M_{\odot}$ ) in mass versus temperature diagrams is better explained by an accretion scenario in which cores gain mass while simultaneously collapsing to form protostars. In a similar manner, Rigby et al. (2021) find evidence for the mass growth of clumps, suggesting that same accretion processes may occur over a wider range of scales. The mass growth of the core is believed to be the result of the collapse of the surrounding parsec-scale mass reservoir called *clump*, hence the accretion scenario described above is referred to as *clump-fed* (Wang et al. 2010).

The results from Rigby et al. (2021) suggest that there must be a link between the properties of a clump and the stars that form within it. Such a link has been searched for in the past. For instance, Palau et al. (2014, 2021) found a correlation between the fragmentation level within massive 0.1 pc-size cores and their average volume density, as expected from Jeans instability. On larger scales, Barnes et al. (2021) found a similar result, larger parsec-size clouds having larger number of cores embedded within them. They also find a correlation between the cloud mass and the mass of its most massive core (MMC). The existence of such a relation has also been explored by Lin et al. (2019), who found a tight correlation between the mass of a subsample of massive ATLASGAL clumps and the mass of the most massive fragment they identify on SABOCA 350  $\mu\text{m}$  continuum images. However, the small difference in angular resolution between LABOCA (18 arcsec) and SABOCA (8.5 arcsec) might play a significant part in driving the observed correlation. On the other hand, Urquhart et al. (2014) argued that clumps with signposts of active massive star formation are more spherical than those which do not have such associated tracers, while Rigby et al. (2018) suggested that more spherical clumps are more efficient at concentrating their mass within their MMC. These studies suggest that a combination of clump mass and morphology might be important parameters for the formation of massive stars.

Here, we focus on a specific morphological category of clumps: hub-filamentary systems (HFS; Myers 2009). Hubs are small networks of converging interstellar filaments, at the centre of which active star formation is often observed (e.g. Liu et al. 2012; Kirk et al. 2013; Peretto et al. 2013, 2014; Treviño-Morales et al. 2019). They are found in all types of region, from low-mass star-forming clouds (e.g. Myers 2009; Kirk et al. 2013), to high-mass star-forming regions (e.g. Peretto et al. 2013; Schwörer et al. 2019), and have even been observed in our closest neighbouring galaxy (Fukui et al. 2019; Tokuda et al. 2019). The formation mechanism of such hubs is not yet fully understood (see Myers 2009, for a description of possible mechanisms). However, hubs are naturally formed in simulations of collapsing clouds with non-isotropic density fields (Kuznetsova, Hartmann & Ballesteros-Paredes 2018; Vázquez-Semadeni et al. 2019). Observationally, there is increasing evidence that hubs are indeed in a state of global collapse (e.g. Kirk et al. 2013; Peretto et al. 2013, 2014; Hacar et al. 2018; Schwörer et al. 2019; Treviño-Morales et al. 2019). Williams et al. (2018) argued that the centres of hub filament systems, where the filaments converge, are privileged locations of massive core formation as they correspond to the locations of maximum gradient of gravitational acceleration, as opposed to individual uniform density filaments where these are located at their ends (e.g. Hartmann & Burkert 2007; Clarke & Whitworth 2015). Clump global collapse, hub morphology, and formation of massive cores might therefore all be interconnected.

In this paper, we aim at constraining the efficiency of hubs at concentrating their mass into their MMC, and this for a large range

of clump masses. The end goal is to disentangle the effects of clump mass to those related to clump morphology. We do this by analysing new Atacama Large Millimeter/submillimeter Array (ALMA) observations of a sample of hubs. In Section 2, we describe the observations and data used in this paper. In Section 3, we discuss the method used to extract cores from the ALMA continuum data, present the extracted core properties, and describe how we obtain physical properties for the host clumps. In Section 4, we present our test sample of ALMA cores taken from the literature, describe our clump classification scheme, and discuss the clump efficiency at forming their MMCs as a function of their morphology. Finally, we present our conclusions in Section 5.

## 2 OBSERVATIONS

### 2.1 Sample selection

For the purpose of this study, we selected six infrared dark clouds, all part of the Peretto & Fuller (2009) catalogue. One of these, SDC335, was already examined by our team in a series of studies (Peretto et al. 2013; Avison et al. 2015, 2021). These six clouds have been selected to exhibit a well-defined hub morphology seen in extinction at 8  $\mu\text{m}$ , with an easily identified filament convergence point (see Section 4.2 for more details on the hub classification). They all have high extinction contrast against a relatively uniform mid-infrared background. They have been selected so that their distances lie within a narrow range, i.e. from 2 to 3.2 kpc, so that their properties can easily be compared to each other. Finally, they have been chosen so that they cover a large range of masses, from a few hundred to a few thousand solar masses, to try to evaluate the impact of the hub morphology on core formation independently of the clump mass.

### 2.2 ALMA observations

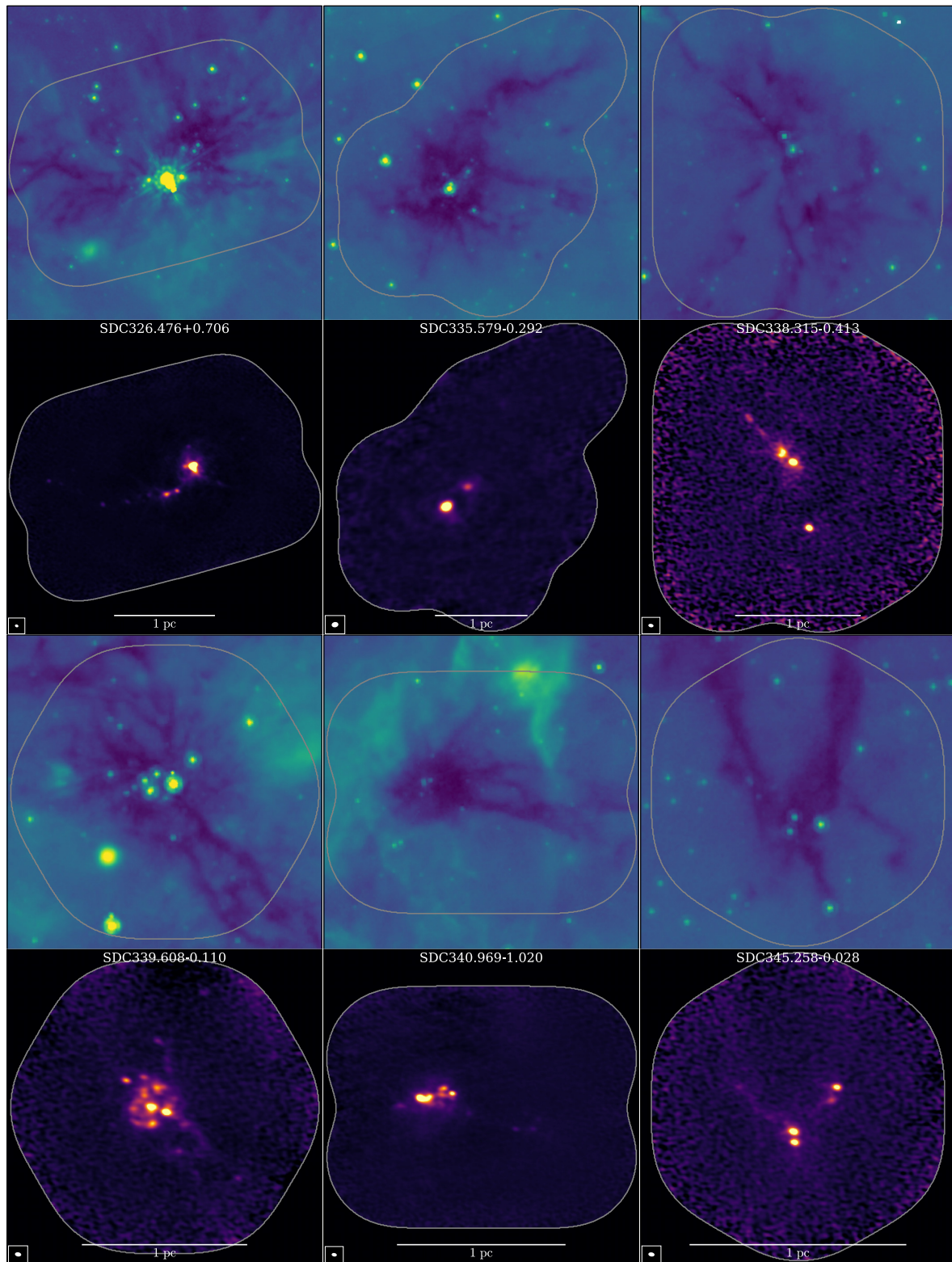
Five IRDCs (see Table 1) were observed with the ALMA 12 m array between 2016 January 20 and 23 with a total of 41–46 antennas (C36-1 configuration), and with the Atacama Compact Array (ACA) between 2016 April 17 and July 25 (during Cycle 3) with 11 antennas (Project ID: 2015.1.01014.S; PI: Peretto). The number of 12 m (7 m) pointings was 61 (23), with a total on-source observing duration of 3.81 h (10.76 h).

An additional IRDC, SDC335, was observed with the ALMA 12 m array between 2011 September 27 and November 19 with the 16 available antennas during Cycle 0 in the compact configuration (Project ID: 2011.0.00474.S; PI: Peretto). A complete description of the observations is presented in Peretto et al. (2013). Follow-up observations of SDC335 were performed with the ACA between 2016 November 6 and 8 (during Cycle 4) with 10 antennas (Project ID: 2016.1.00810.S; PI: Peretto). The total number of 12 m (7 m) pointings was 11 (6), with a total on-source observing duration of 4.11 h (1.33 h).

We achieve an angular resolution of  $\sim 2.8$ – $4.7$  arcsec, which at the distance of the targets corresponds to a linear resolution of 0.029–0.073 pc. This is at least a factor of two smaller than the Jeans length (which ranges between 0.10 and 0.21 pc) computed from the clump's average density, assuming a sound speed of  $0.2 \text{ km s}^{-1}$ .

The data were reduced and calibrated using the same CASA<sup>1</sup> (McMullin et al. 2007) versions as used by the ALMA pipeline, using the standard pipeline scripts. The quasars J1531–5108, J1604–4441,

<sup>1</sup><https://casa.nrao.edu>



**Figure 1.** (First and third row) *Spitzer* 8  $\mu\text{m}$  images of the six IRDCs we observed with ALMA, showing prominent extinction features in a hub-filament system configuration. Below each *Spitzer* image is the corresponding ALMA combined 7 + 12 m continuum images at 2.9 mm of each IRDC. The synthesized beam size of each image is shown in the lower left hand corner, the grey contour shows the extent of our ALMA fields.

**Table 1.** The six IRDCs we observed with ALMA, their estimated distances, and a summary of observational properties of our combined 7 + 12 m observations at 2.9 mm. The IRDCs will hereafter be referred to by their shorthand names highlighted in bold. The linear resolution corresponds to the physical size of the beam major axis at the distance of the clump. The mass sensitivities were calculated assuming a source temperature of 12 K.

Clump name	SDC name (Peretto & Fuller 2009)	$d$ (pc)	Synthesized beam (arcsec $\times$ arcsec)	PA ( $^\circ$ )	RMS noise ( $\mu$ Jy beam $^{-1}$ )	Linear resolution (pc)	$M_{\min}$ ( $M_{\odot}$ )
G326.4745+0.7027	<b>SDC326.476+0.706</b>	2610	2.80 $\times$ 2.16	69.12	78.68	0.035	0.27
G335.5857-0.2906	<b>SDC335.579-0.292</b>	3230	4.69 $\times$ 3.63	-79.00	379.72	0.073	1.98
G338.3150-0.4130	<b>SDC338.315-0.413</b>	2940	2.91 $\times$ 1.92	80.19	49.00	0.041	0.21
G339.6080-0.1130	<b>SDC339.608-0.113</b>	2740	2.88 $\times$ 1.90	80.42	66.06	0.038	0.24
G340.9698-1.0212	<b>SDC340.969-1.020</b>	2210	2.88 $\times$ 1.92	79.92	100.10	0.031	0.24
G345.2580-0.0280	<b>SDC345.258-0.028</b>	2090	2.84 $\times$ 1.87	80.65	50.88	0.029	0.12

J1617-5848, J1706-4600, and J1650-5044 were used for phase calibration. Flux and bandpass calibration were performed using Mars, Ganymede, Neptune, J1427-4206, J1617-5848, J1733-1304, J1924-2914. The uncertainty in absolute flux calibration is  $\sim 5$  per cent in Band 3, according to the ALMA Cycle 3 Technical Handbook.<sup>2</sup> The weights of the 12 m SDC335 data were adjusted using `statwt()` on line-free channels prior to combination with the Cycle 4 ACA data.

The calibrated ACA and 12 m visibilities were then concatenated and imaged using CASA version 5.5.0, utilizing its implementation of the Multi-Scale CLEAN (Cornwell 2008) within the `tclean()` task. This was to better recover extended emission features that are larger than the beam. The data were imaged with Briggs weighting (Briggs 1995) with a robust parameter of 0.5. All of the images were primary beam corrected. For the five hubs observed in Cycle 3, the central frequency was 103.6 GHz and the total continuum bandwidth used was 3.735 GHz. For SDC335, only 0.2 GHz of continuum bandwidth was used for imaging (split over two bands 104.0-104.1 and 105.0-105.1 GHz), as this was the frequency coverage of the original Cycle 0 data set. The central frequency was 104.55 GHz. Table 1 contains a summary of the observational parameters for the six fields.

### 2.3 Spitzer, WISE, and Herschel data

We use publicly available *Spitzer* GLIMPSE 8  $\mu$ m data<sup>3</sup> (Churchwell et al. 2009) and *WISE* 12  $\mu$ m data<sup>4</sup> (Wright et al. 2010), at an angular resolution of  $\sim 2.4$  and  $\sim 6.5$  arcsec, respectively. We use temperature and column density maps presented in Peretto et al. (2016) at a resolution of  $\sim 18$  arcsec, which were constructed from 160 and 250  $\mu$ m data from the *Herschel* Hi-GAL survey (Molinari et al. 2010). Finally, we also make use of the Molinari et al. (2016) 70  $\mu$ m compact source catalogue. Fig. 1 shows the *Spitzer* 8  $\mu$ m fields for all six IRDCs, along with the final imaged ALMA 2.9 mm continuum fields.

## 3 MASS FRAGMENTATION

### 3.1 Core extraction

To extract the structures from our ALMA continuum images, we use a dendrogram-based method using ASTRODENDRO, a PYTHON

package based on the Rosolowsky et al. (2008) implementation of dendrograms to analyse astronomical data. Our extraction method required that the minimum structure size  $n_{\text{pix}, \min}$  must be greater than half the synthesized beam size (typically 18 pixels), the faintest included emission structure to be at a specific intensity of  $I_{\min} = 5 \times \sigma_{\text{global}}$ , and minimum structure significance  $\Delta I_{\min} = 1 \times \sigma_{\text{global}}$ , where  $\sigma_{\text{global}}$  is the rms specific intensity calculated from the residual image of the field produced after imaging (see Table 1). This ensured that all of the extracted emission structures were at least detected five times above the global rms in an image, with a peak at least six times the rms.

For our analysis, we consider the leaves of the dendrogram (i.e. emission structures that do not have any detectable substructure) to be ‘cores’. We are aware that these sources may well be subfragmented at higher resolution. We impose the constraint that only cores that are contained within the contour at  $>50$  per cent of the primary beam power are included in the dendrogram. This is to avoid noise peaks that appear brighter and occur more frequently towards the edges of the fields, caused by the non-uniform response of the primary beam. After applying this constraint, the constructed dendrograms contained 71 candidate cores across the six fields.

We produced error maps by performing a windowed rms calculation on our residuals, with a window size of  $4 \times 4$  beam major axis lengths. We then construct signal-to-noise (SNR) maps to better estimate the strength of the detections, given that the noise varies across the fields, and to help remove any spurious detections. Core candidates with at least  $n_{\text{pix}, \min}$  pixels with an  $\text{SNR} \geq 3$  are classed as detections. Extracted structures that do not satisfy this condition are discarded (see Fig. C1 and Fig. C2 for examples of our core candidate checking). After applying this criteria we obtain a set of 67 cores. Fig. A1 shows a zoomed-in view of these 67 cores, along with their extent as defined by the dendrogram.

### 3.2 Core sizes and masses

Assuming that the cores are in local thermodynamic equilibrium (LTE) and that the dust emission is optically thin, the core masses can then be calculated using

$$M_{\text{core}} = \frac{d^2 S_{\nu}}{\kappa_{\nu} B_{\nu}(T)}, \quad (1)$$

where  $d$  is the distance to the IRDC,  $S_{\nu}$  is the integrated flux density of the source,  $\kappa_{\nu}$  is the specific dust opacity, and  $B_{\nu}(T)$  is the Planck function at a given dust temperature  $T$  (Kauffmann et al. 2008). We assume the same specific dust opacity relation as Marsh,

<sup>2</sup><https://almascience.eso.org/documents-and-tools/cycle3/alma-technical-handbook>

<sup>3</sup><https://irsa.ipac.caltech.edu/data/SPITZER/GLIMPSE>

<sup>4</sup><https://irsa.ipac.caltech.edu/applications/wise/>

Whitworth & Lomax (2015) and Marsh et al. (2017)

$$\kappa_{\nu}(\lambda) = 0.1 \text{ cm}^2 \text{ g}^{-1} \left( \frac{\lambda}{300 \mu\text{m}} \right)^{-\beta} \quad (2)$$

with a dust opacity index  $\beta = 2$ , for a given wavelength  $\lambda$ , and accounting for a gas-to-dust mass ratio of 100. The uncertainty in the dust opacity is around  $\pm 50$  per cent (Ossenkopf & Henning 1994; Roy et al. 2013, 2015).

To estimate core temperatures we use a combination of two methods. Our primary method is to use dust temperature maps derived from *Herschel* 160  $\mu\text{m}$ /250  $\mu\text{m}$  ratio maps as presented in Peretto et al. (2016). We simply take the temperature ( $T_{\text{col}}$ ) at the position of each core's intensity-weighted centroid. These maps cover a temperature range of around 12–30 K for our set of fields. Note that because we assume a unique temperature along the line of sight and that the typical background temperature of the Galactic Plane is  $\sim 18$  K, we may overestimate the temperatures of dense clumps colder than this background value (Peretto et al. 2010; Battersby et al. 2011; Marsh et al. 2015).

For warmer sources (such as massive protostellar cores), this may be significantly underestimating their temperature, and hence overestimating their mass. To try and counter this effect, we use the Hi-GAL 70  $\mu\text{m}$  Compact Source Catalogue (Molinari et al. 2016) to see which cores in our sample have an associated 70  $\mu\text{m}$  source, as the 70  $\mu\text{m}$  flux density is known to be a good tracer of the luminosity of embedded sources (Dunham et al. 2008; Ragan et al. 2012). If a 70  $\mu\text{m}$  source is present within the equivalent radius  $R_{\text{eq}}$  of a core, which is the radius of a circle with equal area to the core's corresponding dendrogram mask, we say they are associated. We then convert the 70  $\mu\text{m}$  flux densities to bolometric (internal) luminosities using the following relation (Elia et al. 2017)

$$L_{\text{int}} = 25.6 \left( \frac{S_{70 \mu\text{m}}}{10 \text{ Jy}} \right) \left( \frac{d}{1 \text{ kpc}} \right)^2 L_{\odot}, \quad (3)$$

where  $S_{70 \mu\text{m}}$  is the integrated 70  $\mu\text{m}$  flux density of the source and  $d$  is the distance to the clump. Assuming that the dust emission from a protostellar core is optically thin and is predominantly in the far-infrared, we calculate the mean mass-weighted temperature of the core,  $\bar{T}_d$  (Emerson 1988; Terebey, Chandler & Andre 1993)

$$\bar{T}_d = \frac{3}{2} T_0 \left( \frac{L_{\text{int}}}{L_0} \right)^{1/6} \left( \frac{r}{r_0} \right)^{-1/3}, \quad (4)$$

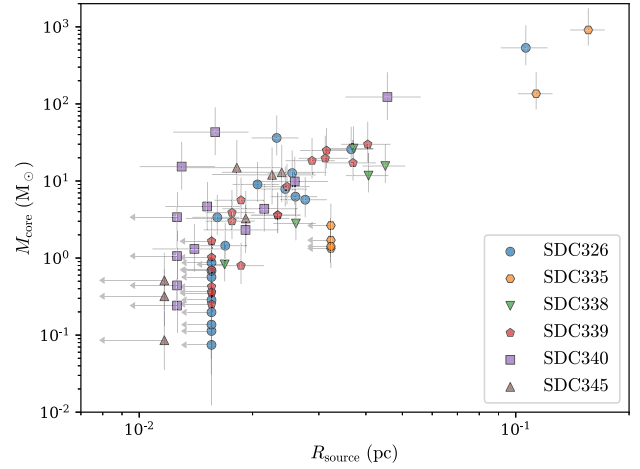
where  $L_{\text{int}}$  is the source's internal luminosity,  $r$  is the core's radius, and reference values  $T_0 = 25$  K,  $L_0 = 520 L_{\odot}$ , and  $r_0 = 0.032$  pc. This form of the equation assumes  $\beta = 2$ , and that the density profile of the core follows  $\rho(r) \propto r^{-2}$ , (as used by e.g. Bontemps et al. 2010; Svoboda et al. 2019).

We use equation (4) to calculate the mean temperature within core equivalent radius  $r = R_{\text{eq}}$ . For our set of sources,  $\bar{T}_d$  ranges between 18 and 76 K.

If a 70  $\mu\text{m}$  flux density derived temperature can be obtained for a core, we assign the core  $T_{\text{core}} = \bar{T}_d$ , and otherwise assign  $T_{\text{core}} = T_{\text{col}}$ . We assume that the temperature of the gas and dust is coupled as the cores have a density at least  $\sim 10^6 \text{ cm}^{-3}$ , the threshold at which Goldsmith (2001) states that the dust and gas temperatures become essentially equal.

We use the Revised Kinematic Distance Calculator<sup>5</sup> (Reid et al. 2009, 2014) to estimate the distances to the IRDCs, using the LSR velocities for each clump. We assume that the IRDCs are located

<sup>5</sup>[http://bessel.vlbi-astrometry.org/revised\\_kd\\_2014](http://bessel.vlbi-astrometry.org/revised_kd_2014)



**Figure 2.** Core mass against deconvolved radius ( $R_{\text{source}}$ ) plot for all extracted cores from all six IRDCs. Upper limits for the radii of unresolved sources are indicated with arrows pointing towards the left.

at the near distance as they are IR-dark at 8  $\mu\text{m}$ , but do not assume whether the clump is located within a spiral arm or in an inter-arm region. The typical distance uncertainty is between 10 and 20 per cent.

The integrated flux density of the cores comes from our dendrogram extraction, following the ‘clipped’ paradigm (see Rosolowsky et al. 2008). Since we care about the cores as being overdensities, by using a clipped method we minimize the contribution from the background on the mass estimates, which could be particularly large for the crowded areas at the centre of the HFSs. This way, we are being conservative in the mass estimates, and are possibly underestimating the mass of some of these cores at the centre of the hubs. The error in integrated flux calculated from the quadrature sum within the core mask of our error maps, multiplied by pixel area.

By substituting all of these values into equation (1), we obtain masses for all cores. The error in the core masses was calculated using Monte Carlo methods, by randomly sampling over each variable in equation (1), assuming Gaussian errors. We also calculate a deconvolved source radius,  $R_{\text{source}}$ , which is given by

$$R_{\text{source}} = \sqrt{R_{\text{eq}}^2 - \frac{\theta_{\text{maj}}\theta_{\text{min}}}{4}}, \quad (5)$$

where  $\theta_{\text{maj}}$  and  $\theta_{\text{min}}$  are the major and minor beam axes, respectively. A table of derived core properties is supplied as online supplementary material, and a plot of core mass against deconvolved radius is shown in Fig. 2.

We see that our sample of extracted cores cover a broad mass range of 0.07–911  $M_{\odot}$ , with a mean mass of 32  $M_{\odot}$ . The core masses we present here follow the ‘clipped’ paradigm, which subtracts all of the flux below the core's contour in the dendrogram (similar to a background subtraction). Our mass sensitivity ranges between 0.12 and 0.27  $M_{\odot}$ , depending on the field, with the exception of SDC335 for which the mass sensitivity is 1.98  $M_{\odot}$ . Note that these mass sensitivities were calculated assuming a source temperature of 12 K, and hence when cores are assigned a temperature warmer than 12 K they can have a lower calculated mass than our listed sensitivity. Also note that these mass sensitivities correspond to a clipped mass sensitivity, whereas often in literature the ‘bijective’ mass sensitivity is quoted. Given the dendrogram parameters we have used for our extraction, a corresponding bijective mass sensitivity would be  $\sim 6$  times higher than the sensitivities quoted above.

**Table 2.** Core properties of the MMCs within each IRDC in our sample, ordered by clump mass.  $R_{\text{source}}$  is the deconvolved equivalent radius of the core, and  $R_{\text{clump}}$  is the equivalent radius of the clump. The full table can be found online, along with a table of properties for all of the extracted cores.

Core ID	$R_{\text{source}}$ (pc)	$T_{\text{core}}$ (K)	$M_{\text{core}}$ ( $M_{\odot}$ )	$R_{\text{clump}}$ (pc)	$M_{\text{clump}}$ ( $M_{\odot}$ )	$f_{\text{MMC}}$ (per cent)	CFE (per cent)
SDC345-MM2	0.018	14.6	$15^{+19}_{-9}$	0.27	135	11.0	32.7
SDC338-MM3	0.037	15.9	$26^{+25}_{-10}$	0.42	213	12.4	27.0
SDC339-MM3	0.040	15.9	$30^{+29}_{-12}$	0.54	942	3.2	15.3
SDC340-MM1	0.046	46.3	$123^{+134}_{-61}$	0.53	1768	7.0	11.8
SDC326-MM1	0.106	41.5	$534^{+512}_{-216}$	0.80	2399	22.2	26.9
SDC335-MM1	0.156	41.2	$911^{+835}_{-338}$	0.95	3739	24.4	28.2

Contrary to Csengeri et al. (2017), we do find intermediate-mass cores in the sample, likely due to not using a single  $T_{\text{core}} = 25$  K for all cores, the assumption made in their core mass calculations. Two cores (SDC335-MM1 and SDC326-MM1) are exceptionally high mass, at 911 and 534  $M_{\odot}$  contained within a deconvolved radius of 0.156 and 0.106 pc, respectively. They also correspond to the two of the largest sources identified. They are therefore excellent candidates for the formation of very high mass stars.

Four of the HFS contain at least one core with  $M_{\text{core}} \geq 30 M_{\odot}$  and so, assuming a core to star formation efficiency of 30 per cent, could form at least one high-mass star with  $M_{\star} > 8 M_{\odot}$ .

### 3.3 Core formation efficiencies

As discussed in the introduction, the ability of a clump to concentrate its mass within cores is a fundamental, but poorly understood characteristic of star-forming regions. In this paper, we will refer to parsec-scale dense molecular cloud structures as ‘clumps’, within which stellar clusters and large systems can form (Eden et al. 2012; Motte, Bontemps & Louvet 2018b). Here, we calculate the core formation efficiency (CFE)

$$\text{CFE} = \frac{\sum_i M_{\text{core},i}}{M_{\text{clump}}}, \quad (6)$$

which is the sum of core masses in a given clump, divided by the clump’s mass. This tells us how much of a clump’s mass is contained within compact sources. The clump masses are obtained from *Herschel* column density maps (Peretto et al. 2016), where the clump boundary is defined by the  $\text{H}_2$  column density contour at  $N_{\text{H}_2} = 3 \times 10^{22} \text{ cm}^{-2}$ .

As far as massive star formation is concerned, another quantity of interest is the fraction of the clump mass contained within its MMC

$$f_{\text{MMC}} = \frac{M_{\text{MMC}}}{M_{\text{clump}}}. \quad (7)$$

Table 2 shows a summary of the properties of the MMCs for each IRDC in our sample, and the CFE for each clump. We see that the CFE varies between 11 and 33 per cent, while  $f_{\text{MMC}}$  ranges between 3 and 24 per cent. Note that the CFE calculated here does not take into account the variation in sensitivity between each field, and hence are not directly comparable.

## 4 THE RELATIONSHIP BETWEEN CLUMP AND CORE MASSES

### 4.1 Broader sample of clumps and cores

In order to get a sense of how  $f_{\text{MMC}}$  values from our hub sample compare to those from a less biased Galactic plane population

of clumps, we use the Csengeri et al. (2017) sample of high-mass ATLASGAL sources observed with ALMA (Project ID: 2013.1.00960.S; PI: Csengeri). This sample contains 35 clumps that have been observed with ALMA ACA at 878  $\mu\text{m}$  (Band 7). These ACA data have similar angular resolution as ours, with a mean beam size of 3.8 arcsec. Also, the distance of these clumps span a very similar range ( $1.3 \text{ kpc} < d < 4.2 \text{ kpc}$ ) to our set of sources. Note that as our 7 + 12 m observations are Band 3, and hence the dust emission we are comparing between data sets may arise from slightly different layers of the cores.

For consistency we use the same procedure for source extraction as described in Section 3.1. However, note that the Csengeri et al. (2017) observations are single-pointing only, and are somewhat less sensitive. We therefore cannot compare the CFE values from both samples, and instead focus on comparing  $f_{\text{MMC}}$ . Core temperatures and clump masses for the Csengeri et al. (2017) sample are estimated in the same way as for our sample of clumps (see Section 3).

Three of the clumps overlap between our samples, so we preferentially choose extracted fluxes from our data due to greater coverage, sensitivity, and resolution. In the two instances where two clumps share the same  $N_{\text{H}_2}$  contour, we merge the clumps and assign it the name of the ‘original’ clump containing the brightest source. Given that our method to measure clump mass is dependent on *Herschel* coverage, one source from the Csengeri et al. (2017) sample has been discarded. The joined sample therefore contains 35 clumps in total, and within those clumps we detect 129 cores. *Spitzer* 8  $\mu\text{m}$  cutout images of each clump are shown in Fig. B1, with the *Herschel* column density contours (that define our clump boundaries) overlaid.

### 4.2 Clump classification

In this paper, we use two distinct clump classification schemes, one that qualitatively identifies the amount of star formation activity within it, and another that determines whether or not an MMC is at the centre of a hub filament system. Despite both schemes having their own limitations (see below), they can still provide insight into the time evolution of the clumps for the former, and the filamentary environment of the MMCs for the latter.

We first classify the clumps based on the mid-infrared brightness within the  $N_{\text{H}_2} = 3 \times 10^{22} \text{ cm}^{-2}$  contour used to define the clump boundaries (see Fig. B1). Infrared brightness has recently been shown to be a reliable time evolution tracer (Rigby et al. 2021; Watkins et al., in preparation). We classify clumps into three infrared brightness category, from the less evolved to the more evolved: ‘IR-dark’, no 8  $\mu\text{m}$  extended emission within clump, prominent extinction features; ‘IR-bright’, significant 8  $\mu\text{m}$  extended emission within the clump, without prominent extinction features; or ‘Intermediate’,

having both clear extinction and emission features within the clump. This classification is made by eye, and is therefore subject to some subjectivity, especially for borderline cases. However, it still provides a reasonable classification of the inner star formation activity of a clump. Out of the 35 clumps, we classify 13 as IR-dark, 16 as Intermediate, and 6 as IR-bright.

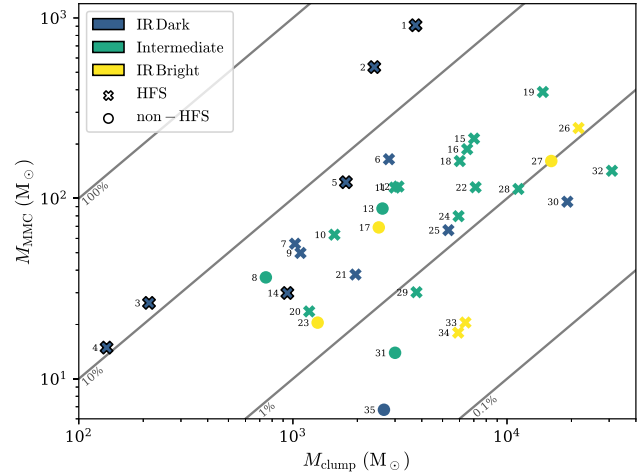
Clumps are then further classified as either HFS or non-HFS according to the location of the MMC with respect to its local network of filaments. For that purpose we utilize a Hessian-based method, similar to Schisano et al. (2014) and Orkisz et al. (2019), to extract filamentary structures from *Herschel* 250  $\mu\text{m}$  images of the clumps. We then classify a clump as an HFS if there are at least three filaments pointing towards the location of the MMC. One caveat of this method is the relatively low angular resolution of the *Herschel* 250  $\mu\text{m}$  image compared to the ALMA data ( $\sim 18$  arcsec versus  $\sim 3$  arcsec) which prevents us from making a robust association between filaments and cores. Also, for the same reason, a lot of the filamentary structures within the clumps will not be resolved or even identified. We therefore use the *Spitzer* 8  $\mu\text{m}$  images in conjunction with our extracted filaments to inform our final classification, by checking each one of the clumps for filamentary structures seen in extinction at 8  $\mu\text{m}$ . Instances where clumps were classified by *Spitzer* 8  $\mu\text{m}$  are noted in our table of MMC properties as part of the online supplementary materials associated with this paper.

Out of the 35 clumps, 28 are classified as hubs and 7 as non-hubs, making our sample hub-dominated. This is likely to be a consequence of how the sample has been built: the merging of 6 infrared dark hubs with a sample of 29 massive clumps, which are known to often be associated with hubs (Kumar et al. 2020).

### 4.3 Mass concentration within most massive cores

One argument is that a clump’s ability to form high-mass stars is directly linked to the amount of material within that clump (Beuther et al. 2013). Therefore, we first investigate the relation between the clump mass ( $M_{\text{clump}}$ ) and the mass of their MMCs ( $M_{\text{MMC}}$ ). Fig. 3 shows that, when considering the entire clump sample, there is only a fairly moderate correlation between these two quantities, with a Spearman’s rank correlation coefficient  $r_s = 0.535$ , and a  $p$ -value = 0.0009. It is possible that this correlation may be influenced by the sparse sampling of the parameter space below a clump mass of  $< 1000 M_{\odot}$ . Above a clump mass of  $1000 M_{\odot}$ , the distribution of the MMC mass is fairly uniform between 10 and  $1000 M_{\odot}$ , suggesting a wide range of  $f_{\text{MMC}}$  values. If we exclude all data points (four clumps) with  $M_{\text{clump}} < 1000 M_{\odot}$ , then we obtain a correlation coefficient of  $r_s = 0.447$  ( $p$ -value = 0.01), which is moderately weaker than for the full sample. However, if we now only consider the six new infrared dark hubs we observed, we notice that the correlation, even though less statistically significant, is much stronger, with a correlation coefficient of 1 ( $p$ -value = 0). We speculate that this could point towards a time-dependent correlation between clump and core mass. We will discuss that point further below.

A tight correlation between clump mass and mass of the MMC was found by Lin et al. (2019) for a sample of ATLASGAL clumps covering a large range of evolutionary stages as traced by their luminosity to mass ratio. This is at odds with the results discussed above for the full sample. It is likely that the tight correlation observed by Lin et al. (2019) is artificially driven by the small range of scales they probe, typically 0.3 pc for what they call cores and 0.7 pc for their clumps (a factor of  $\sim 2.3$ ). In our study, the range of scales we probe between the median core size (0.08 pc) and the median clump

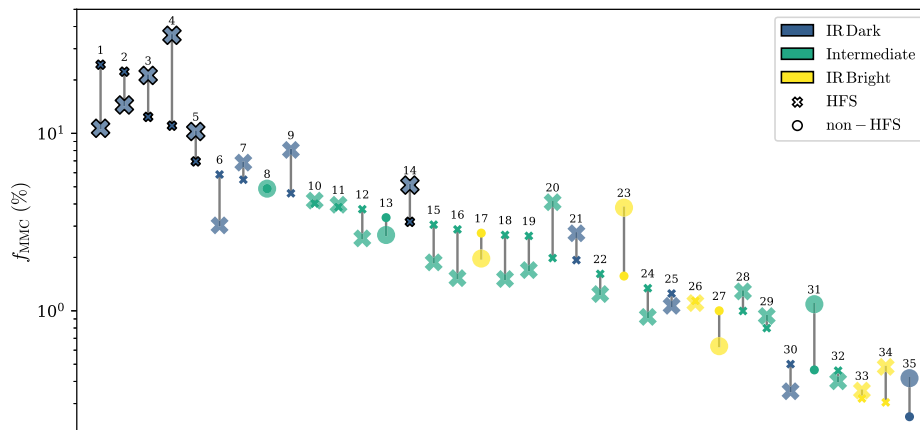


**Figure 3.** Mass of clumps against the mass of the MMC within that clump. The crosses represent clumps that have been classified as HFS, and circular points are non-HFS clumps. The point fill colours represent the three IR-brightness classes. Points with a black outline are sources observed at 2.9 mm, and points without outlines are sources observed at 878  $\mu\text{m}$ . Clump 20 (G339.6802-1.2090) had no *Spitzer* 8  $\mu\text{m}$  coverage, so *WISE* 12  $\mu\text{m}$  was used for IR-brightness classification. The diagonal grey lines represent lines of constant  $f_{\text{MMC}}$ .

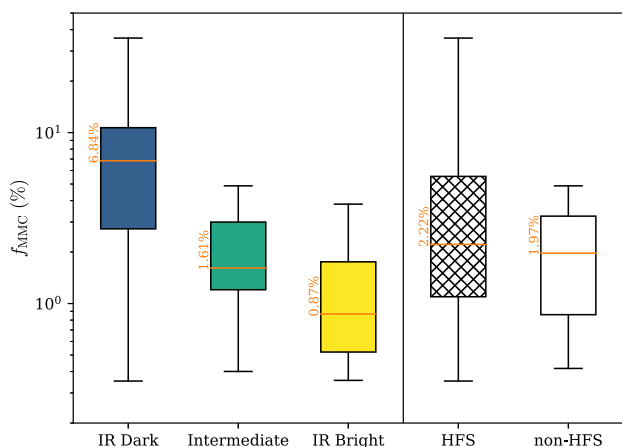
size (1.5 pc) is a lot larger, a factor of  $\sim 18.8$ , therefore probing clearly distinct structures.

The smaller set of symbols in Fig. 4 shows the same information as presented in Fig. 3 but in the form of  $f_{\text{MMC}}$  values, with each clump marked by their unique ID number. The points use the same colour scheme as used in Fig. 3. What is apparent is that some of the clump categories, such as IR-dark clumps, have on average larger  $f_{\text{MMC}}$  values than others. However, one possible bias that may affect such comparison is the difference in core radii, with some cores being more massive simply by being much larger. In order to remove that bias, the larger set of symbols in Fig. 4 shows the same quantity as the small set of symbols but rescaled by the median  $R_{\text{eq}}$  of the MMCs (0.07 pc) over the core’s  $R_{\text{eq}}$ . By doing this rescaling we effectively compare  $f_{\text{MMC}}$  at the same core radius, assuming that the density profiles of these cores scale as  $\rho(r) \propto r^{-2}$  (Bontemps et al. 2010; Svoboda et al. 2019). We now see that, even though there has been a bit of reshuffling, the individual  $f_{\text{MMC}}$  have not drastically changed.

Fig. 5 shows the distribution of rescaled  $f_{\text{MMC}}$  values for each category of clump, where the orange line represents the median, and the ‘whiskers’ of the box-plot represent the full extent of the data. We can see that IR-dark clumps have a median  $f_{\text{MMC}}$  around 7.9 times higher than IR-bright clumps, while Intermediate clumps have a median value 2.4 times higher than their IR-bright counterparts. Even more striking, is our sample of 6 IR-dark hubs (see Table 2) that have a median value of 12.6 per cent, which is 14.5 times higher than IR-bright clumps. In contrast, the median rescaled  $f_{\text{MMC}}$  values for HFS and non-HFS are only separated by a factor of 1.1. Although the median values for these two clump categories are close, the distributions shown in Fig. 5 appear to be different. To test this we perform a two-sample Kolmogorov–Smirnov (K–S) test to check whether the two samples (HFS and non-HFS) come from the same distribution. We find a  $p$ -value of 0.705 for the test, and therefore we cannot reject the null hypothesis that the two samples were drawn from the same distribution (at a significance level of 5 per cent). Although this test is inconclusive, it is likely biased by the very small sample size of non-HFS clumps.



**Figure 4.** Fraction of each clump’s total mass contained within its MMC ( $f_{\text{MMC}}$ ). The larger points are the  $f_{\text{MMC}}$  values multiplied by the median core radius of 0.07 pc over the radius of that MMC. The number above each pair of points represents the clump ID number.



**Figure 5.** Distribution of rescaled  $f_{\text{MMC}}$  values for each of our clump categories. The orange lines represent the median (with the values also in orange), the boxes represent the interquartile range (IQR), and the ‘whiskers’ represent the full extent (i.e. the 0th and 100th percentile) of the data. From left to right, there are 13, 16, 6, 28, and 7 clumps in each category.

## 5 CONCLUSIONS

As shown in Section 4, although the distributions of  $f_{\text{MMC}}$  values of the hub filament and non-hub systems appear different, this apparent difference is not statistically significant. Whether this is because there is a common mass concentration efficiency between the two types of clumps or due to the small size of the non-HFS sample and a bias in the sample construction is unclear. Distinguishing between these two possibilities requires observations of a larger, well selected sample of non-HFS sources. The source selection bias is such that we are, by construction, focusing on high-mass star-forming clumps. These have been shown to be preferentially associated with hubs (Kumar et al. 2020). As a result, we may be missing out on a large population of non-hub clumps that have much lower  $f_{\text{MMC}}$  values. The relatively low resolution of the data used to derive filamentation skeletons (compared to the ALMA data used for core characterization) may cause us to misclassify a large fraction of clumps altogether, in either direction, which would lead to averaging out  $f_{\text{MMC}}$  values for both hub and non-hub clumps. As it is, we believe that we cannot provide

any robust conclusions on the ability of hubs to concentrate more mass within their MMCs compared to non-hub clumps.

Interestingly, Fig. 5 shows a clear trend of  $f_{\text{MMC}}$  values with our infrared brightness classification,  $f_{\text{MMC}}$  decreases by more than one order of magnitude when going from IR-dark to IR-bright clumps. If one takes this infrared brightness classification as a rough proxy for time evolution, then our results suggest that the clump efficiency in concentrating mass within their MMCs decreases with time. When inspecting in detail the origin of this decrease, we realize that this trend is due to an increase of median clump masses (IR-dark clump: 1961  $M_{\odot}$ ; Intermediate clump: 4859  $M_{\odot}$ ; IR-bright clump: 6155  $M_{\odot}$ ) and not due to a decrease of median core masses (IR-dark clumps: 56  $M_{\odot}$ ; Intermediate clumps: 114  $M_{\odot}$ ; IR-bright clumps: 45  $M_{\odot}$ ). Note as well that the subsample of six infrared dark hubs we observed displays the highest median  $f_{\text{MMC}}$  value (12.6 per cent) of all categories. While it is not completely clear what bias in the way we selected these six sources is responsible for driving such high  $f_{\text{MMC}}$  values, in the context of the trend discussed above, these sources represent some of the earliest stages of clump evolution (with a median clump mass of 1355  $M_{\odot}$  and a median MMC mass of 76  $M_{\odot}$ ). It is possible that we overestimate the temperatures of our clumps, and hence underestimate their mass leading to a potentially artificially higher  $f_{\text{MMC}}$  for IR-dark clumps in particular. However, fig. 3 in Peretto et al. (2016) shows that for a clump with a mean temperature of 12 K and  $N_{\text{H}_2} \geq 3 \times 10^{22} \text{ cm}^{-2}$  the column density (and therefore mass) is at worst underestimated by  $\sim 30$  per cent, far from the factor of 3 required to bring the median mass of IR-dark and IR-bright clumps in line.

In light of these results, we propose a scenario in which HFS are formed very early on during the time evolution of a clump, efficiently funnelling mass into its MMC. The early global collapse of the clump is likely to be driving force behind the early formation of these cores (Peretto et al. 2013, 2014; Williams et al. 2018). During these early stages of clump evolution the mass of the MMC most likely correlates with the mass of the clump itself. As time goes on, clump mass grows (Peretto et al. 2020; Rigby et al. 2021), accreting matter from its surrounding environment (without increasing the mass of its MMC), resulting in a decreasing  $f_{\text{MMC}}$  over time.

There are a couple of consequences to this scenario. First, the CMF at early stages is likely to be top-heavy, as observed by Zhang et al. (2015) and Motte et al. (2018a). Second, despite the subsequent mass growth of the clump, the MMCs that are formed within are those



that are formed at early stages. This could be explained by radiative feedback disrupting the hubs after the first few massive stars have formed (Geen, Soler & Hennebelle 2017), or by mechanisms such as fragmentation induced starvation (Peters et al. 2010). By using observations of the optically thick HCO<sup>+</sup> (1–0) line, Jackson et al. (2019) measured the level of the blue asymmetry – which signifies the presence of gravitational collapse – in a sample of ∼1000 MALT90 clumps. The significance of the asymmetry feature was found to decrease as a function of evolutionary stage in these clumps, which would seem to support our proposed reduction in the efficiency of mass concentration over time.

This scenario needs to be further tested by enlarging the sample to cover a wider range of masses, and selected to be representative of the population of Galactic clumps. Mapping the kinematics of these HFS would allow us to look for signatures of clump collapse and accretion, infer whether the filaments in these hubs are really converging, and investigate any link with various core properties. We will address the latter in a following study.

## ACKNOWLEDGEMENTS

MA is supported by the Science and Technology Facilities Council (STFC). NP and AJR acknowledge the support of the STFC consolidated grant number ST/S00033X/1. ADC acknowledges the support from the Royal Society University Research Fellowship (URF/R1/191609). GMW acknowledges support from STFC under grant number ST/R000905/1. This paper makes use of the following ALMA data: ADS/JAO.ALMA#2011.0.00474.S, ADS/JAO.ALMA#2015.1.01014.S, ADS/JAO.ALMA#2016.1.00810.S, and ADS/JAO.ALMA#2013.1.00960.S. ALMA is a partnership of ESO (representing its member states), NSF (USA) and NINS (Japan), together with NRC (Canada), MOST and ASIAA (Taiwan), and KASI (Republic of Korea), in cooperation with the Republic of Chile. The Joint ALMA Observatory is operated by ESO, AUI/NRAO, and NAOJ. We would like to thank Timea Csengeri for supplying us with the additional ALMA data. This research made use of the PYTHON packages ASTROPY<sup>6</sup> (Astropy Collaboration 2013, 2018), ASTRODENDRO,<sup>7</sup> IPYTHON<sup>8</sup> (Pérez & Granger 2007), NUMPY<sup>9</sup> (Harris et al. 2020), SCIPY<sup>10</sup> (Virtanen et al. 2020), MATPLOTLIB<sup>11</sup> (Hunter 2007), and SCIKIT-IMAGE<sup>12</sup> (van der Walt et al. 2014). This research also made use of NASA’s Astrophysics Data System Bibliographic Services, TOPCAT<sup>13</sup> (Taylor 2005), and SAOImageDS9<sup>14</sup> (Joye & Mandel 2003).

## DATA AVAILABILITY

The data underlying this article are available in the article and in its online supplementary material. Any additional data will be shared on reasonable request to the corresponding author.

<sup>6</sup><https://astropy.org/>

<sup>7</sup><http://dendrograms.org/>

<sup>8</sup><https://ipython.org/>

<sup>9</sup><https://numpy.org/>

<sup>10</sup><https://scipy.org/>

<sup>11</sup><https://matplotlib.org/>

<sup>12</sup><https://scikit-image.org>

<sup>13</sup><http://www.star.bris.ac.uk/~mbt/topcat/>

<sup>14</sup><http://ds9.si.edu/>

## REFERENCES

- André P. et al., 2010, *A&A*, 518, L102  
 André P., Di Francesco J., Ward-Thompson D., Inutsuka S.-I., Pudritz R. E., Pineda J., 2014, *Protostars and Planets VI*. University of Arizona Press, Tucson, AZ  
 André P., Arzoumanian D., Könyves V., Shimajiri Y., Palmeirim P., 2019, *A&A*, 629, L4  
 Astropy Collaboration, 2013, 558, A33  
 Astropy Collaboration, 2018, *AJ*, 156, 123  
 Avison A., Peretto N., Fuller G. A., Duarte-Cabral A., Traficante A., Pineda J. E., 2015, *A&A*, 577, A30  
 Avison A. et al., 2021, *A&A*, 645, A142  
 Barnes A. T. et al., 2021, *MNRAS*, 503, 4601  
 Battersby C. et al., 2011, *A&A*, 535, A128  
 Beuther H. et al., 2013, *A&A*, 553, A115  
 Bontemps S., Motte F., Csengeri T., Schneider N., 2010, *A&A*, 524, A18  
 Briggs D. S., 1995, PhD thesis, The New Mexico Institute of Mining and Technology  
 Churchwell E. et al., 2009, *PASP*, 121, 213  
 Clarke S. D., Whitworth A. P., 2015, *MNRAS*, 449, 1819  
 Cornwell T. J., 2008, *IEEE J. Sel. Top. Signal Process.*, 2, 793  
 Csengeri T. et al., 2017, *A&A*, 600, L10  
 Cyganowski C. J. et al., 2014, *ApJ*, 796, L2  
 Dunham M. M., Crapsi A., Evans II N. J., Bourke T. L., Huard T. L., Myers P. C., Kauffmann J., 2008, *ApJS*, 179, 249  
 Eden D. J., Moore T. J. T., Plume R., Morgan L. K., 2012, *MNRAS*, 422, 3178  
 Elia D. et al., 2017, *MNRAS*, 471, 100  
 Emerson J. P., 1988, in Dupree A. K., Lago M. T. V. T., eds, *Formation and Evolution of Low Mass Stars*. Springer, Dordrecht, p. 21  
 Fukui Y. et al., 2019, *ApJ*, 886, 14  
 Geen S., Soler J. D., Hennebelle P., 2017, *MNRAS*, 471, 4844  
 Goldsmith P. F., 2001, *ApJ*, 557, 736  
 Hacar A., Tafalla M., Forbrich J., Alves J., Meingast S., Grossschedl J., Teixeira P. S., 2018, *A&A*, 610, A77  
 Harris C. R. et al., 2020, *Nature*, 585, 357  
 Hartmann L., Burkert A., 2007, *ApJ*, 654, 988  
 Hunter J. D., 2007, *Comput. Sci. Eng.*, 9, 90  
 Jackson J. M. et al., 2019, *ApJ*, 870, 5  
 Johnstone D., Fich M., Mitchell G. F., Moriarty-Schieven G., 2001, *ApJ*, 559, 307  
 Joye W. A., Mandel E., 2003, in Payne H. E., Jędrzejewski R. I., Hook R. N., eds, *ASP Conf. Ser. Vol. 295, Astronomical Data Analysis Software and Systems XII*. Astron. Soc. Pac., San Francisco, p. 489  
 Kauffmann J., Bertoldi F., Bourke T. L., Evans N. J., Lee C. W., 2008, *A&A*, 487, 993  
 Kirk H., Myers P. C., Bourke T. L., Gutermuth R. A., Hedden A., Wilson G. W., 2013, *ApJ*, 766, 115  
 Könyves V. et al., 2010, *A&A*, 518, L106  
 Könyves V. et al., 2015, *A&A*, 584, A91  
 Könyves V. et al., 2020, *A&A*, 635, A34  
 Kumar M. S. N., Palmeirim P., Arzoumanian D., Inutsuka S. I., 2020, *A&A*, 642, A87  
 Kuznetsova A., Hartmann L., Ballesteros-Paredes J., 2018, *MNRAS*, 473, 2372  
 Lin Y., Csengeri T., Wyrowski F., Urquhart J. S., Schuller F., Weiss A., Menten K. M., 2019, *A&A*, 631, A72  
 Liu H. B., Jiménez-Serra I., Ho P. T. P., Chen H.-R., Zhang Q., Li Z.-Y., 2012, *ApJ*, 756, 10  
 McMullin J. P., Waters B., Schiebel D., Young W., Golap K., 2007, in Shaw R. A., Hill F., Bell D. J., eds, *ASP Conf. Ser. Vol. 376, Astronomical Data Analysis Software and Systems XVI*. Astron. Soc. Pac., San Francisco, p. 127  
 Marsh K. A., Whitworth A. P., Lomax O., 2015, *MNRAS*, 454, 4282  
 Marsh K. A. et al., 2017, *MNRAS*, 471, 2730  
 Molinari S. et al., 2010, *A&A*, 518, L100  
 Molinari S. et al., 2016, *A&A*, 591, A149

- Motte F., Andre P., Neri R., 1998, *A&A*, 336, 150
- Motte F., Bontemps S., Schilke P., Schneider N., Menten K. M., Brogière D., 2007, *A&A*, 476, 1243
- Motte F. et al., 2018a, *Nat. Astron.*, 2, 478
- Motte F., Bontemps S., Louvet F., 2018b, *ARA&A*, 56, 41
- Myers P. C., 2009, *ApJ*, 700, 1609
- Nony T. et al., 2018, *A&A*, 618, L5
- Nutter D., Ward-Thompson D., 2007, *MNRAS*, 374, 1413
- Orkisz J. H. et al., 2019, *A&A*, 624, A113
- Ossenkopf V., Henning T., 1994, *A&A*, 291, 943
- Palau A. et al., 2014, *ApJ*, 785, 42
- Palau A. et al., 2021, *ApJ*, 912, 159
- Peretto N., Fuller G. A., 2009, *A&A*, 505, 405
- Peretto N. et al., 2010, *A&A*, 518, L98
- Peretto N. et al., 2013, *A&A*, 555, A112
- Peretto N. et al., 2014, *A&A*, 561, A83
- Peretto N., Lenfestey C., Fuller G. A., Traficante A., Molinari S., Thompson M. A., Ward-Thompson D., 2016, *A&A*, 590, A72
- Peretto N. et al., 2020, *MNRAS*, 496, 3482
- Pérez F., Granger B. E., 2007, *Comput. Sci. Eng.*, 9, 21
- Peters T., Klessen R. S., Low M.-M. M., Banerjee R., 2010, *ApJ*, 725, 134
- Ragan S. et al., 2012, *A&A*, 547, A49
- Reid M. J. et al., 2009, *ApJ*, 700, 137
- Reid M. J. et al., 2014, *ApJ*, 783, 130
- Rigby A. J. et al., 2018, *A&A*, 615, A18
- Rigby A. J. et al., 2021, *MNRAS*, 502, 4576
- Rosolowsky E. W., Pineda J. E., Kauffmann J., Goodman A. A., 2008, *ApJ*, 679, 1338
- Roy A. et al., 2013, *ApJ*, 763, 55
- Roy A. et al., 2015, *A&A*, 584, A111
- Sanhueza P. et al., 2019, *ApJ*, 886, 102
- Schisano E. et al., 2014, *ApJ*, 791, 27
- Schwörer A. et al., 2019, *A&A*, 628, A6
- Svoboda B. E. et al., 2019, *ApJ*, 886, 36
- Taylor M. B., 2005, in Shopbell P., Britton M., Ebert R., eds, *ASP Conf. Ser. Vol. 347, Astronomical Data Analysis Software and Systems XIV*. Astron. Soc. Pac., San Francisco, p. 29
- Terebey S., Chandler C. J., Andre P., 1993, *ApJ*, 414, 759
- Tokuda K. et al., 2019, *ApJ*, 886, 15
- Treviño-Morales S. P. et al., 2019, *A&A*, 629, A81
- Urquhart J. S. et al., 2014, *MNRAS*, 443, 1555
- van der Walt S., Schönberger J. L., Nunez-Iglesias J., Boulogne F., Warner J. D., Yager N., Gouillart E., Yu T., 2014, *PeerJ*, 2, e453
- Vázquez-Semadeni E., Palau A., Ballesteros-Paredes J., Gómez G. C., Zamora-Avilés M., 2019, *MNRAS*, 490, 3061
- Virtanen P. et al., 2020, *Nat. Methods*, 17, 261
- Wang P., Li Z.-Y., Abel T., Nakamura F., 2010, *ApJ*, 709, 27
- Williams G. M., Peretto N., Avison A., Duarte-Cabral A., Fuller G. A., 2018, *A&A*, 613, A11
- Wright E. L. et al., 2010, *AJ*, 140, 1868
- Zhang Q., Wang K., Lu X., Jiménez-Serra I., 2015, *ApJ*, 804, 141

## SUPPORTING INFORMATION

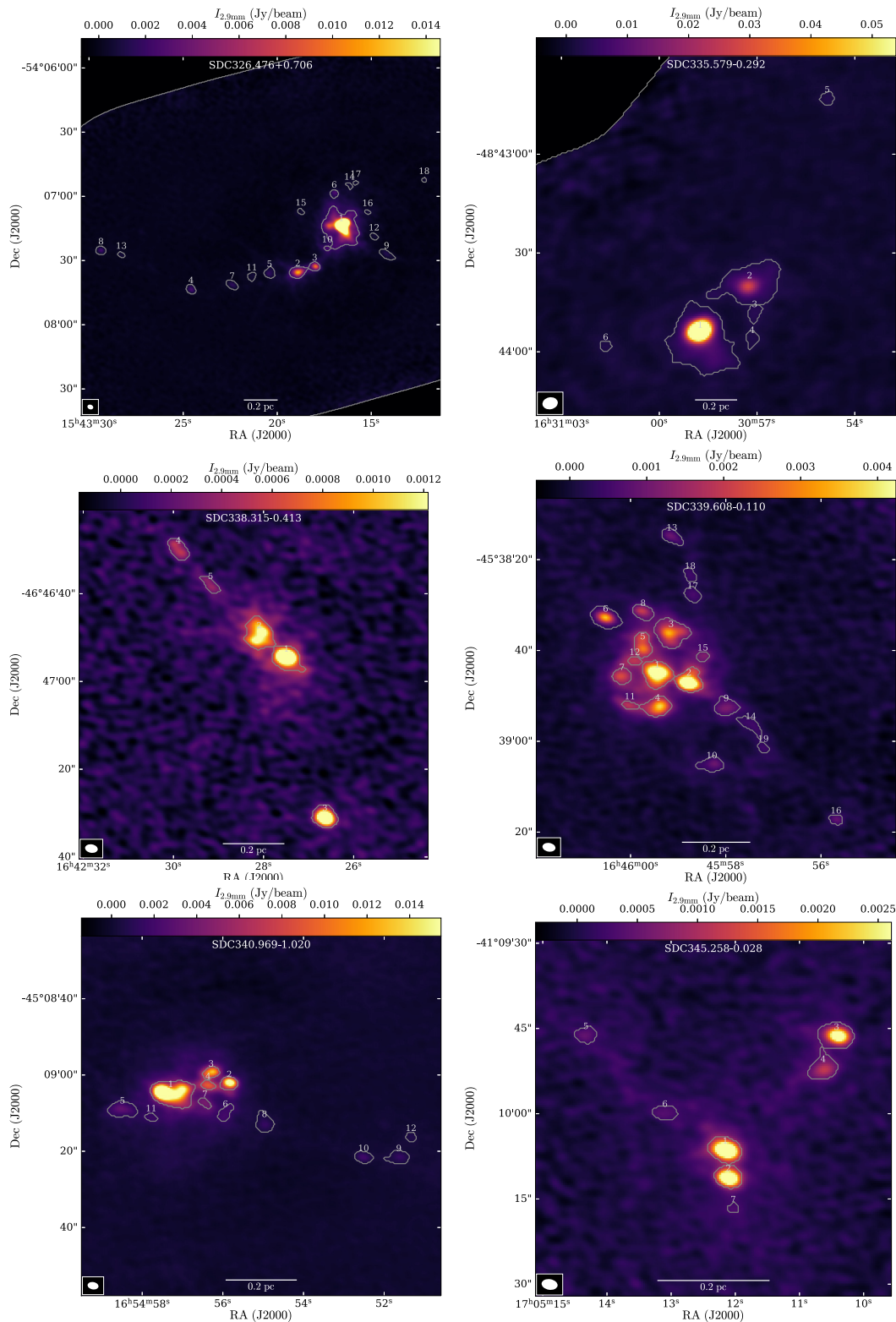
Supplementary data are available at *MNRAS* online.

**Table 2.** Core properties of the MMCs within each IRDC in our sample, ordered by clump mass.

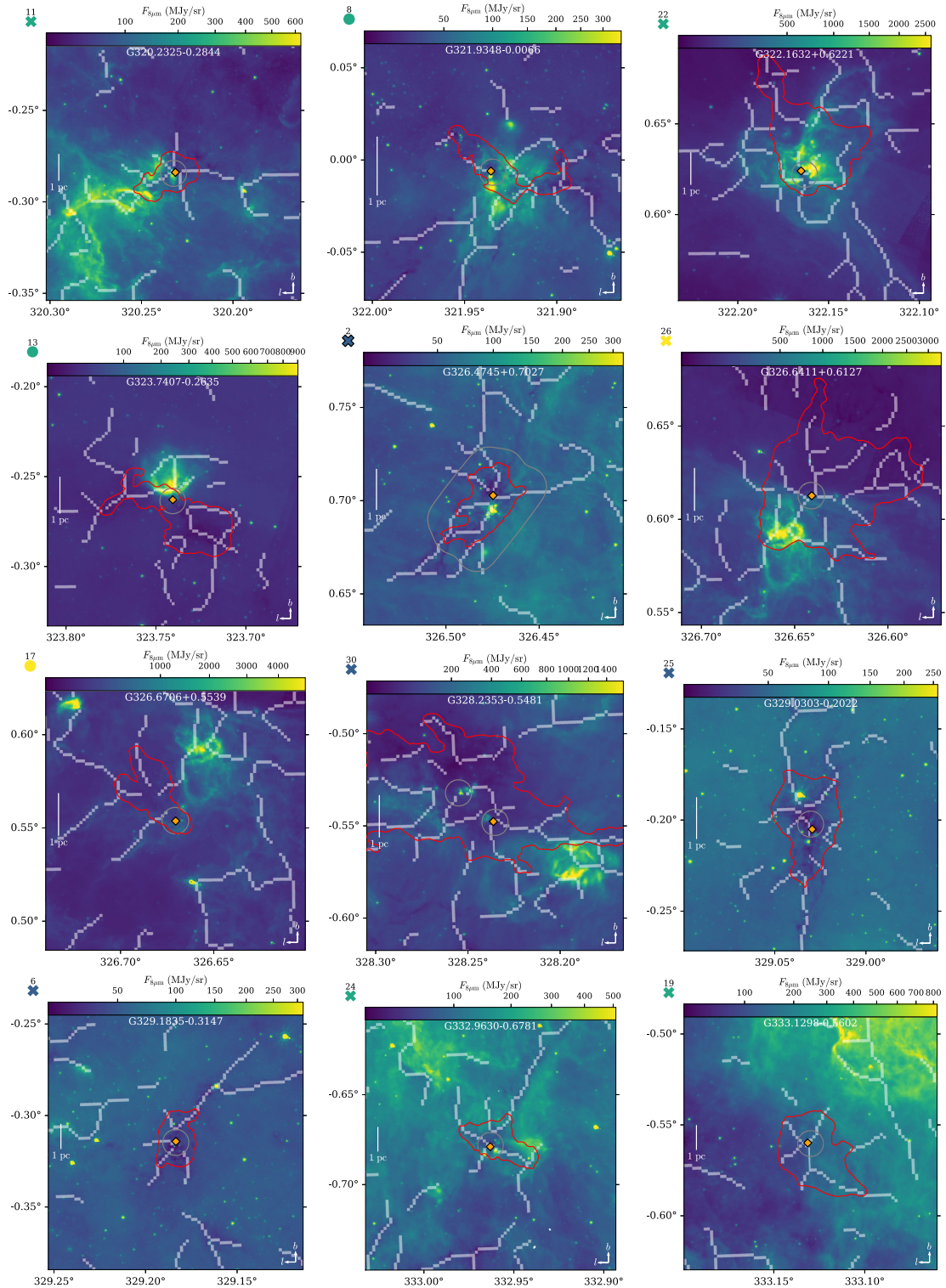
**A2021\_cores.fits**  
**core\_properties.fits**  
**MMCs.fits**

Please note: Oxford University Press is not responsible for the content or functionality of any supporting materials supplied by the authors. Any queries (other than missing material) should be directed to the corresponding author for the article.

## APPENDIX A: ALMA 2.9 MM CONTINUUM IMAGES



**Figure A1.** Close-up view of ALMA 2.9 mm continuum images of our sample of six hub-filament systems, showing all of our extracted ‘cores’. Each extracted core is labelled with their MM#, with the grey contours showing each core’s dendrogram structure footprint.

APPENDIX B: *Spitzer* 8  $\mu$ M CLUMP CUTOUTS

**Figure B1.** *Spitzer* 8  $\mu$ m images of each clump in our sample. The images are in Galactic longitude and latitude ( $l$ ,  $b$ ), with the axes marked in the lower right. The red contours represent the ‘boundary’ of our clumps defined by the  $N_{\text{H}_2} = 3 \times 10^{22} \text{ cm}^{-2}$  level in our *Herschel* column density maps. The orange diamond marks the location of the MMC in each clump, and the grey contours show the ALMA field of view coverage for each object. The filamentary structures identified in the *Herschel* 250  $\mu$ m maps are overlaid in white. The symbol to the upper left represents how we classified each clump, along with the clump ID number. Crosses represent clumps that have been classified as HFS, and circular points are non-HFS clumps. The point fill colours represent the three IR-brightness classes. Points with a black outline are sources observed at 2.9 mm, and points without outlines are sources observed at 878  $\mu$ m.

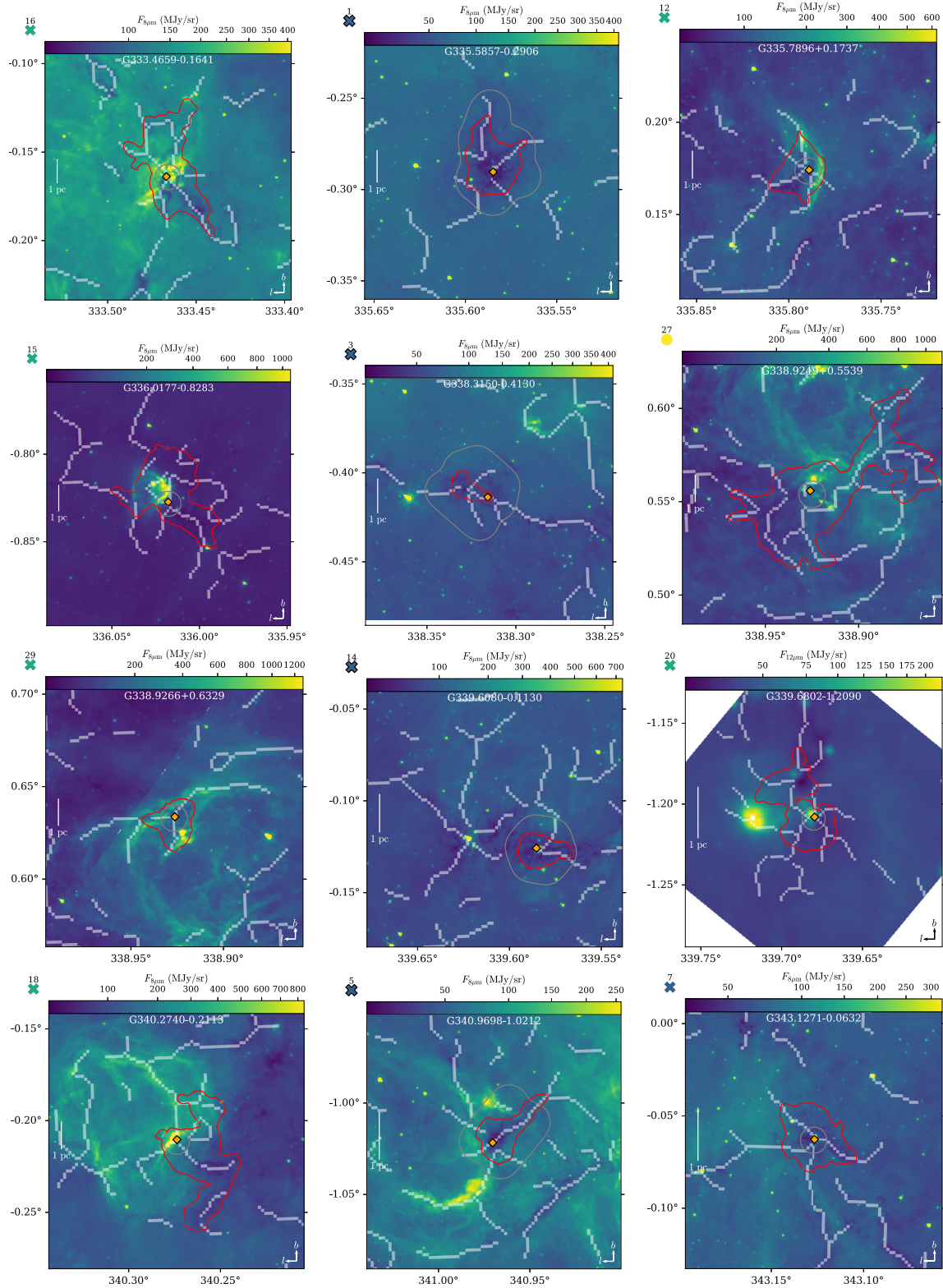


Figure B1. – *continued*

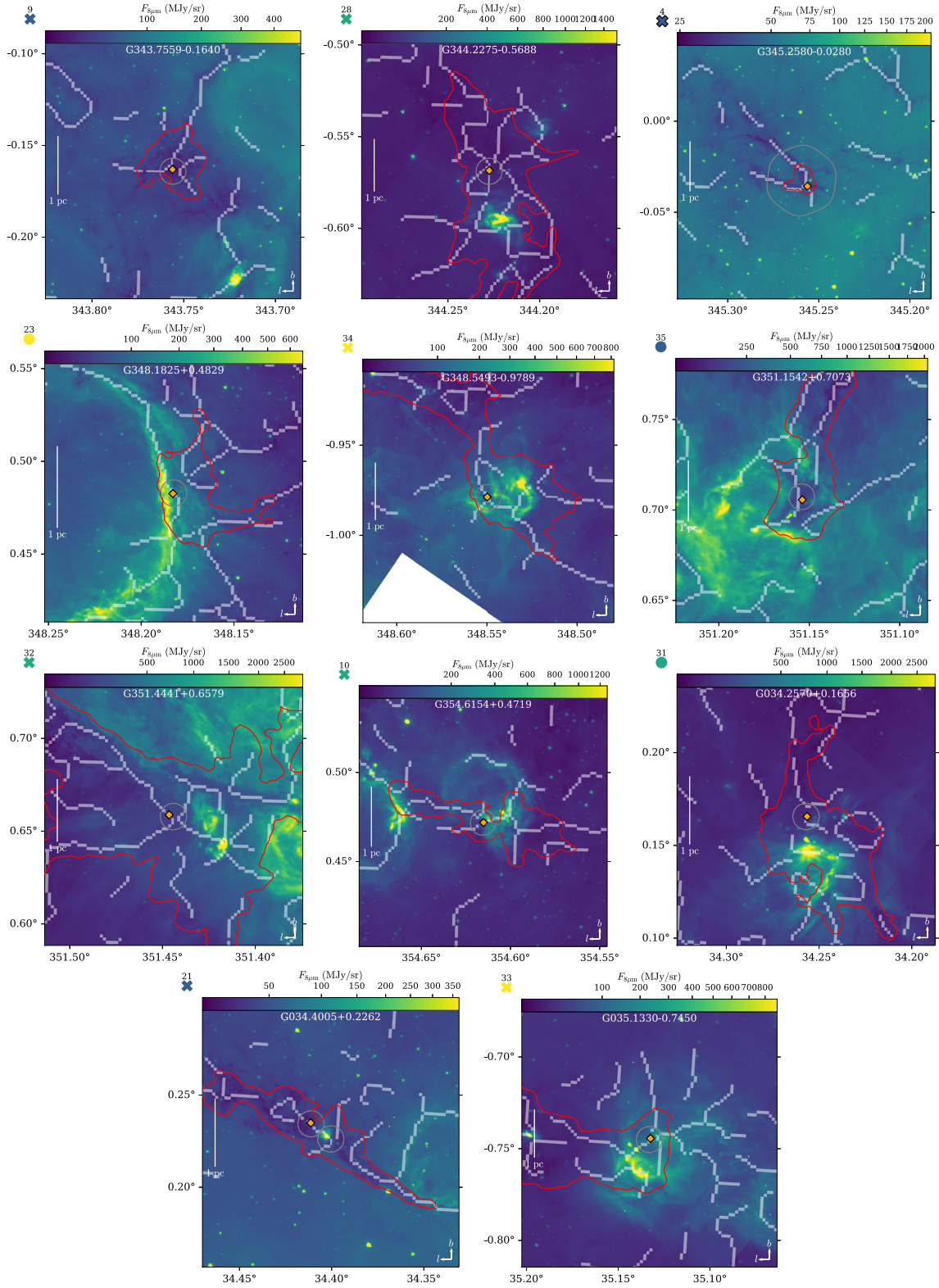
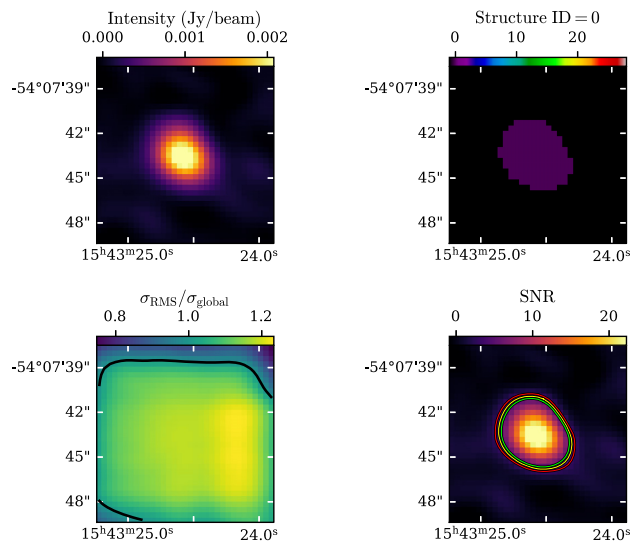
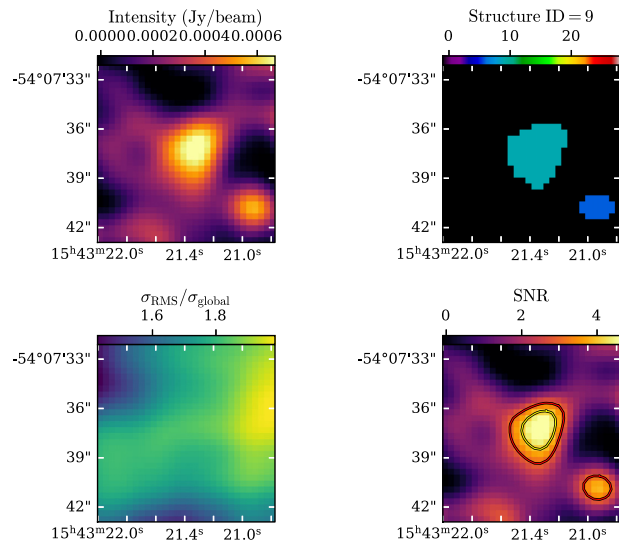


Figure B1. – continued

### APPENDIX C: CORE DETECTION QUALITY CHECKING



**Figure C1.** Example of core checking plot for Structure ID 0 in SDC326 (G326.4745 + 0.7027-MM4), which was flagged as a detection. (*top left*) Continuum image. (*top right*) Dendrogram leaf of structure extracted from image. (*bottom left*) rms noise map divided by global rms value used for dendrogram construction. The black contour represents where  $\sigma_{\text{rms}}/\sigma_{\text{global}} = 1$ . (*bottom right*) SNR map, with contours for SNR levels of 3, 4, and 5 shown in red, yellow, and green, respectively.



**Figure C2.** Another example of a core checking plot (as above) for Structure ID 9 in SDC326 (G326.4745 + 0.7027-MM11), which was also flagged as a detection. Structure ID 6 is shown to the lower right, which was discarded due to its small size and low SNR.

This paper has been typeset from a  $\text{\TeX}/\text{\LaTeX}$  file prepared by the author.