



This is a repository copy of *Subcutaneous cladribine to treat multiple sclerosis : experience in 208 patients.*

White Rose Research Online URL for this paper:  
<https://eprints.whiterose.ac.uk/181219/>

Version: Published Version

---

**Article:**

Allen-Philbey, K., De Trane, S., Mao, Z. et al. (35 more authors) (2021) Subcutaneous cladribine to treat multiple sclerosis : experience in 208 patients. *Therapeutic Advances in Neurological Disorders*, 14. ISSN 1756-2864

<https://doi.org/10.1177/17562864211057661>

---

**Reuse**

This article is distributed under the terms of the Creative Commons Attribution-NonCommercial (CC BY-NC) licence. This licence allows you to remix, tweak, and build upon this work non-commercially, and any new works must also acknowledge the authors and be non-commercial. You don't have to license any derivative works on the same terms. More information and the full terms of the licence here:  
<https://creativecommons.org/licenses/>




**Takedown**

If you consider content in White Rose Research Online to be in breach of UK law, please notify us by emailing [eprints@whiterose.ac.uk](mailto:eprints@whiterose.ac.uk) including the URL of the record and the reason for the withdrawal request.



[eprints@whiterose.ac.uk](mailto:eprints@whiterose.ac.uk)  
<https://eprints.whiterose.ac.uk/>

# Subcutaneous cladribine to treat multiple sclerosis: experience in 208 patients

Kimberley Allen-Philbey<sup>\*</sup> , Stefania De Trane<sup>\*</sup>, Zhifeng Mao, Cesar Álvarez-González, Joela Mathews, Amy MacDougall, Andrea Stennett, Xia Zhou, Ozlem Yildiz, Ashok Adams, Lucia Bianchi, Camilla Blain, Christine Chapman, Karen Chung, Cris S Constantinescu, Catherine Dalton, Rachel A Farrell, Leonora Fisniku, Helen Ford, Bruno Gran, Jeremy Hobart, Zhaleh Khaleeli, Miriam Mattoscio, Sue Pavitt, Owen Pearson, Luca Peruzzotti-Jametti, Antonio Scalfari, Basil Sharrack, Eli Silber, Emma C Tallantyre, Stewart Webb, Benjamin P Turner, Monica Marta, Sharmilee Gnanapavan, Gunnar Juliusson, Gavin Giovannoni<sup>\*</sup> , David Baker and Klaus Schmierer<sup>\*</sup> 

## Abstract

**Objective:** To report on safety and effectiveness of subcutaneous cladribine (Litak<sup>®</sup>) in multiple sclerosis (MS) patients.

**Methods:** Litak<sup>®</sup> was offered to MS-patients irrespective of disease course. Litak<sup>®</sup> 10 mg was administered for 3–4 days during week 1. Based on lymphocyte count at week 4, patients received another 0–3 doses at week 5. A second course was administered 11 months later. Follow-up included adverse events, relapses, expanded disability status scale (EDSS), 9-hole-peg and Timed-25-foot-walking tests, no-evidence-of-disease-activity (NEDA), no-evidence-of-progression-or-active-disease (NEPAD), MRI, cerebrospinal fluid (CSF) neurofilament light chain (NfL), and lymphocyte counts.

**Results:** In all, 208 patients received at least one course of treatment. Age at baseline was 44 (17–72) years and EDSS 0–8.5. Cladribine was generally well tolerated. One myocardial infarction, one breast cancer, and three severe skin reactions occurred without long-term sequelae. Two patients died (one pneumonia, one encephalitis). Lymphopenia grade 3 occurred in 5% and grade 4 in 0.5%. In 94 out of 116 pwMS with baseline and follow-up (BaFU) data after two treatment courses, EDSS remained stable or improved. At 18 months, 64% of patients with relapsing MS and BaFU data ( $n = 39$ ) had NEDA. At 19 months, 62% of patients with progressive MS and BaFU data ( $n = 13$ ) had NEPAD. Of  $n = 13$  patients whose CSF-NfL at baseline was elevated, 77% were normalised within 12 months.

**Conclusions:** Litak<sup>®</sup> was well tolerated. Effectiveness in relapsing MS appeared similar to cladribine tablets and was encouraging in progressive MS. Our data suggest cladribine may be safe and effective in MS-patients irrespective of their disease stage.

**Keywords:** cladribine, disease-modifying treatment, multiple sclerosis, NEDA, NEPAD, treatment access

Received: 22 July 2021; revised manuscript accepted: 15 October 2021.

## Introduction

Multiple sclerosis (MS) is a chronic immune-mediated, demyelinating, and degenerative disease of the central nervous system (CNS) affecting about 2.8 million Worldwide.<sup>1</sup> While the course of MS is highly variable, it is generally associated

with chronic accelerated loss of CNS tissue and disability accrual.

Numerous disease-modifying treatments (DMT) have been licenced for people with MS (pwMS). However, access to DMT is highly regulated. In the

*Ther Adv Neurol Disord*

2021, Vol. 14: 1–16

DOI: 10.1177/  
17562864211057661

© The Author(s), 2021.  
Article reuse guidelines:  
sagepub.com/journals-  
permissions

Correspondence to:  
**Klaus Schmierer**  
Neuroscience, Clinical  
Board Medicine, The Royal  
London Hospital, Barts  
Health NHS Trust, London,  
UK Neuroscience, Surgery  
and Trauma, The Blizard  
Institute, Barts and The  
London School of Medicine  
& Dentistry, Queen Mary  
University of London, 4  
Newark Street, London E1  
2AT, UK  
[k.schmierer@qmul.ac.uk](mailto:k.schmierer@qmul.ac.uk)

**Kimberley Allen-Philbey**  
**Ozlem Yildiz**  
**Benjamin P Turner**  
**Monica Marta**  
**Sharmilee Gnanapavan**  
**Gavin Giovannoni**  
Neuroscience, Clinical  
Board Medicine, The Royal  
London Hospital, Barts  
Health NHS Trust, London,  
UK

Neuroscience, Surgery  
and Trauma, The Blizard  
Institute, Barts and The  
London School of Medicine  
& Dentistry, Queen Mary  
University of London,  
London, UK

**Stefania De Trane**  
**Lucia Bianchi**  
**Christine Chapman**  
**David Baker**  
Neuroscience, Surgery  
and Trauma, The Blizard  
Institute, Barts and The  
London School of Medicine  
& Dentistry, Queen Mary  
University of London,  
London, UK

**Zhifeng Mao**  
Kingmed College of  
Laboratory Medicine,  
Guangzhou Medical  
University, Guangzhou,  
China

Department of Clinical  
Medicine, Medical School,  
Xiangnan University,  
Chenzhou, China

**Cesar Álvarez-González**  
Neurologic Clinic and  
Policlinic, Departments  
of Medicine, Biomedicine  
and Clinical Research,  
University Hospital Basel,  
Basel, Switzerland

Research Center for Clinical Neuroimmunology and Neuroscience, University of Basel, Basel, Switzerland

**Joela Mathews**

Pharmacy Department, The Royal London Hospital, Barts Health NHS Trust, London, UK

**Amy MacDougall**

Department of Medical Statistics, London School of Hygiene and Tropical Medicine, London, UK

**Andrea Stennett**

Neuroscience, Clinical Board Medicine, The Royal London Hospital, Barts Health NHS Trust, London, UK

Preventive Neurology Unit, Wolfson Institute of Preventive Medicine, Barts and The London School of Medicine & Dentistry, Queen Mary University of London, London, UK

**Xia Zhou**

Neuroscience, Clinical Board Medicine, The Royal London Hospital, Barts Health NHS Trust, London, UK

**Ashok Adams**

Neuroradiology Department, The Royal London Hospital, Barts Health NHS Trust, London, UK

**Camilla Blain**

**Catherine Dalton**  
St George's University Hospitals NHS Foundation Trust, London, UK

**Christine Chapman**

Neuroscience, Surgery and Trauma, The Blizard Institute, Queen Mary University of London, London, UK

**Karen Chung**

The National Hospital for Neurology and Neurosurgery, University College London Hospitals NHS Foundation Trust, London, UK

**Cris S Constantinescu**

**Bruno Gran**

Department of Neurology, Nottingham University Hospitals NHS Trust, Nottingham, UK

Mental Health and Clinical Neuroscience Academic Unit, School of Medicine, University of Nottingham, Nottingham, UK

**Rachel A Farrell**

The National Hospital for Neurology and Neurosurgery, University College London Hospitals NHS Foundation Trust, London, UK

United Kingdom (UK), DMT-eligibility is established by the National Institute for Health and Care Excellence (NICE), Scottish Medicines Consortium and Belfast Health and Social Care Trust.

Cladribine tablets, CladT, were first licenced in Australia in 2010. However, CladT were suspended less than 12 months after rejection of licence applications to the European Medicines Agency (EMA) and U.S. Food and Drug Administration in 2010/11.<sup>2</sup> Key for these rejections were safety concerns related to lymphopenia and a potential risk of malignancies. However, independent research into the mechanism of action of cladribine in MS,<sup>3–5</sup> the cancer risk<sup>6</sup> and publication of further data from the pivotal studies<sup>5,7</sup> supported a reappraisal and ultimately licencing of CladT (Mavenclad<sup>®</sup>) from August 2017. In the UK National Health Service (NHS), Mavenclad<sup>®</sup> was subsequently fast-tracked to become the first MS-DMT of the Accelerated Access Collaborative.<sup>8</sup>

We started using subcutaneously injected cladribine (Litak<sup>®</sup>), licenced for treatment of hairy-cell leukaemia since 1993,<sup>9</sup> as an off-label immunotherapy from late 2014, that is, 3 years prior to EMA licencing of Mavenclad<sup>®</sup>. As part of our plans to make cladribine available to pwMS we confirmed, in a meeting with the UK Medicines and Healthcare Regulatory Authority on 18 April 2013, the bioequivalence of parenteral and oral cladribine. Dosing, however, had to be adjusted to 100% bioavailability of parenteral cladribine compared to about 42% of CladT.<sup>10</sup> We previously described preliminary findings in our emerging cohort of pwMS undergoing Litak<sup>®</sup> treatment.<sup>9</sup> Here, we report on a significantly expanded cohort including new information on the risks and potential benefits of this treatment.

## Methods

This service development was registered with the Clinical Effectiveness Unit at Barts Health NHS Trust (Barts Health; registration number: 11483). The use of Litak<sup>®</sup> in pwMS was approved by the Barts Health Neuroscience Clinical Network.

From October 2014, pwMS were offered Litak<sup>®</sup> irrespective of whether they were eligible for NHS DMT. Patients considering the treatment were provided with comprehensive information to aid their understanding and decision regarding Litak<sup>®</sup> treatment.<sup>11</sup>

Between October 2014 and February 2016, treatment decisions were largely based on clinical judgement (chronic disability accrual, relapses) although gadolinium-enhancing (Gd<sup>+</sup>) lesion(s) and new/enlarging T<sub>2</sub> lesion(s) on MRI were considered. From February 2016 onwards disease activity based on MRI and/or cerebro-spinal fluid (CSF) neurofilament light chain (NfL) levels, over and above clinical activity, was mandatory for treatment eligibility.<sup>12</sup> Treatment with Litak<sup>®</sup> in all cases was approved by the neuroinflammation multidisciplinary team of Barts Health.

## Safety review

Prior to treatment initiation, pwMS had to pass a safety checklist<sup>11</sup> including blood tests (full blood and differential white cell counts, biochemistry, liver function tests, creatinine) and urinalysis. The presence of active and/or latent infections was ruled out, and the absence of other contraindications, as per Litak<sup>®</sup> SmPC confirmed. Minimum lymphocyte count (TLC) had to be  $1.0 \times 10^9 \text{ L}^{-1}$ . Active malignancies were excluded based on history and clinical examination. Compliance with regular cervical cancer screening was mandatory.

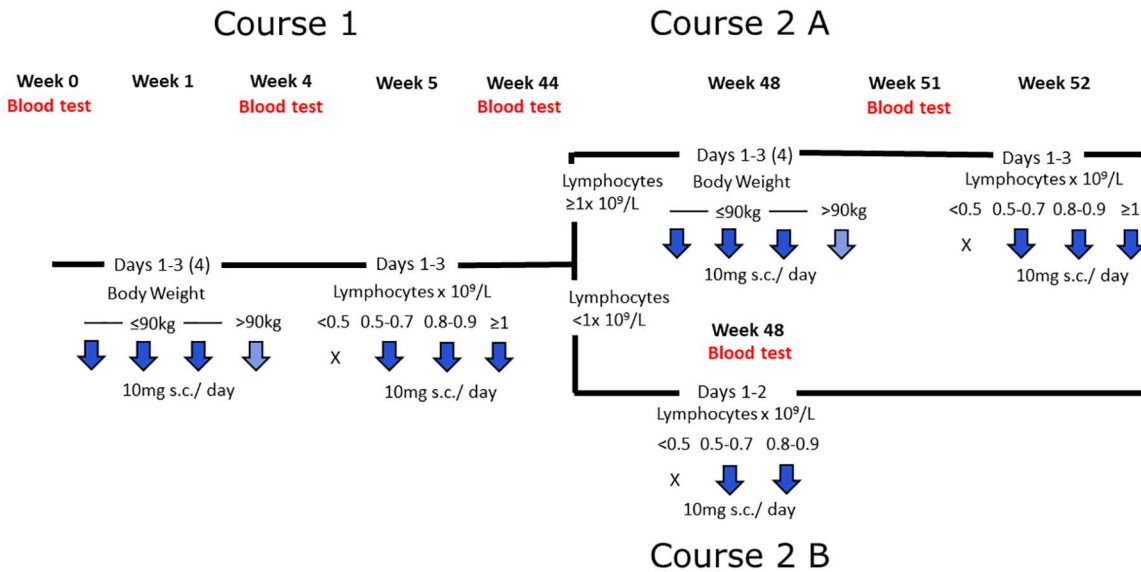
In patients without immunoreactivity against *Varicella zoster* virus, vaccination was mandatory. We also recommended concomitant famciclovir 500 mg twice daily as a herpes prophylaxis for 60 days from the first Litak<sup>®</sup> administration. Reassured that very few cases developed significant lymphocyte toxicity, the dose of famciclovir was reduced to 250 mg per day. We discontinued antiviral prophylaxis after Mavenclad<sup>®</sup> was licenced in August 2017.

Patients of childbearing potential had to use effective contraception during treatment, and for at least 6 months after receiving the last dose of Litak<sup>®</sup>. Due to the potential impact of cladribine on male fertility as per Litak<sup>®</sup> SmPC,<sup>13</sup> men were offered cryopreservation of sperm.

Informed consent was documented using a form designed in 2015, revised in 2016 and 2018.<sup>11</sup>

## Treatment

The Litak<sup>®</sup> dose administered to each patient was personalised to body weight and total lymphocyte count (TLC) as previously described.<sup>9,14</sup> In short,



**Figure 1.** Dosing schedule of Litak<sup>®</sup> adjusted to body weight and lymphocyte count. *Treatment course 1:* Following injections of Litak<sup>®</sup> 10 mg on 3–4 consecutive days in week 1, total lymphocyte count (TLC) was measured at week 4. If TLC was  $\geq 1.0 \times 10^9 \text{ L}^{-1}$ , further injections of Litak<sup>®</sup> 10 mg were given on three consecutive days in week 5. If TLC was  $0.8\text{--}0.9 \times 10^9 \text{ L}^{-1}$ , further injections of Litak<sup>®</sup> 10 mg were given on two consecutive days in week 5. If TLC was  $0.5\text{--}0.7 \times 10^9 \text{ L}^{-1}$ , one further injection of Litak<sup>®</sup> 10 mg was given in week 5. If TLC was  $<0.5 \times 10^9 \text{ L}^{-1}$ , no further injection of Litak<sup>®</sup> was given during this treatment course. *Treatment course 2A:* If TLC at week 44 was  $\geq 1.0 \times 10^9 \text{ L}^{-1}$ , injections of Litak<sup>®</sup> 10 mg were given on three consecutive days in week 48. TLC was then measured at week 51. If TLC was  $\geq 1.0 \times 10^9 \text{ L}^{-1}$ , further injections of Litak<sup>®</sup> 10 mg were given on three consecutive days in week 52. If TLC was  $0.8\text{--}0.9 \times 10^9 \text{ L}^{-1}$ , further injections of Litak<sup>®</sup> 10 mg were given on two consecutive days in week 52. If TLC was  $0.5\text{--}0.7 \times 10^9 \text{ L}^{-1}$ , one further injection of Litak<sup>®</sup> 10 mg was given in week 52. If TLC was  $<0.5 \times 10^9 \text{ L}^{-1}$ , no further injection of Litak<sup>®</sup> was given. *Treatment course 2B:* If TLC at week 44 was  $0.8\text{--}0.9$ , injections of Litak<sup>®</sup> 10 mg were given on two consecutive days in week 48. If TLC was  $0.5\text{--}0.7 \times 10^9 \text{ L}^{-1}$ , one further injection of Litak<sup>®</sup> 10 mg was given in week 48. If TLC was  $<0.5 \times 10^9 \text{ L}^{-1}$ , no further injection of Litak<sup>®</sup> was given.

Litak<sup>®</sup> 10 mg was administered on three consecutive days (four if body weight was  $>90 \text{ kg}$ ). Based on TLC at week 4, another 0–3 injections were given in week 5 (Figure 1). The treatment course was repeated in weeks 48 and 52, again depending on weight and TLC.

### Outcomes

Patients were clinically assessed at baseline and annually thereafter, though some were seen more frequently. Relapse and expanded disability status scale (EDSS)<sup>15</sup> data were extracted from the electronic health record at the point of care. From September 2016, we introduced the nine-hole-peg (9HPT) and Timed-25-foot-walking (T25FW) tests as additional assessments.<sup>16</sup> Follow-up included adverse events (AEs), presence/absence of Gd<sup>+</sup> lesions on T<sub>1</sub>-weighted MRI and new lesion(s), or an increased lesion size, compared to a reference scan on T<sub>2</sub>-weighted

MRI. CSF-NfL levels were quantified using a commercial ELISA (UmanDiagnostics NF-Light ELISA).<sup>17</sup> The upper limit of normal (ULN) of the CSF-NfL level was 290 pg/mL for patients aged  $<30$  years, 380 pg/mL for 31–39 year olds, and 830 pg/mL for patients  $\geq 40$  years.<sup>18</sup>

Disability progression was defined as an increase in EDSS between two assessments of (1)  $\geq 1$  point if baseline EDSS was  $\leq 5.5$  and (2)  $\geq 0.5$  point if baseline EDSS was  $\geq 6.0$ . Cut-offs of 20% change (speed) were used for both T25FW and 9HPT.<sup>19</sup> The proportion of patients with ‘no evidence of disease activity’ (NEDA) and ‘no evidence of progression or active disease’ (NEPAD) were calculated for patients with complete datasets. Since a number of patients in our cohort were unable to complete the T25FW, the test was dropped to create a measure called NEPAD\*. Figure 2 illustrates the process of selecting suitable patients with complete datasets. NEDA was

Department of Neuroinflammation, National Hospital for Neurology and Neurosurgery, London, UK

#### Leonora Fisniku

Brighton and Sussex University Hospitals NHS Trust, Brighton, UK; Brighton and Sussex Medical School, Brighton, UK

#### Helen Ford

Leeds Teaching Hospitals NHS Trust, Leeds, UK

#### Jeremy Hobart

Plymouth University Peninsula Schools of Medicine and Dentistry, Plymouth, UK

#### Zhaleh Khaleeli

Department of Neuroinflammation, National Hospital for Neurology and Neurosurgery, London, UK

#### Miriam Mattosco

Queen’s Hospital, Barking Havering and Redbridge Hospital NHS Trust, Romford, UK; Department of Brain Sciences, Faculty of Medicine, Imperial College London, London, UK

#### Sue Pavitt

Dental Translational and Clinical Research Unit, School of Dentistry, University of Leeds, Leeds, UK

#### Owen Pearson

Department of Neurology, Swansea Bay University Health Board, Port Talbot, UK

#### Luca Peruzzotti-Jametti

Department of Clinical Neurosciences and National Institute for Health Research (NIHR) Biomedical Research Centre, University of Cambridge, Cambridge, UK

#### Antonio Scalfari

Centre of Neuroscience, Department of Medicine, Charing Cross Hospital, Imperial College London, London, UK

#### Basil Sharrack

Department of Neurology, Sheffield Teaching Hospitals NHS Foundation Trust, Sheffield, UK

Department of Neuroscience and NIHR Neurosciences Biomedical Research Centre, University of Sheffield, Sheffield, UK

#### Eli Silber

Department of Neurology, King’s College Hospital, London, UK

**Emma C Tallantyre**  
Department of Neurology,  
University Hospital of  
Wales, Cardiff, UK

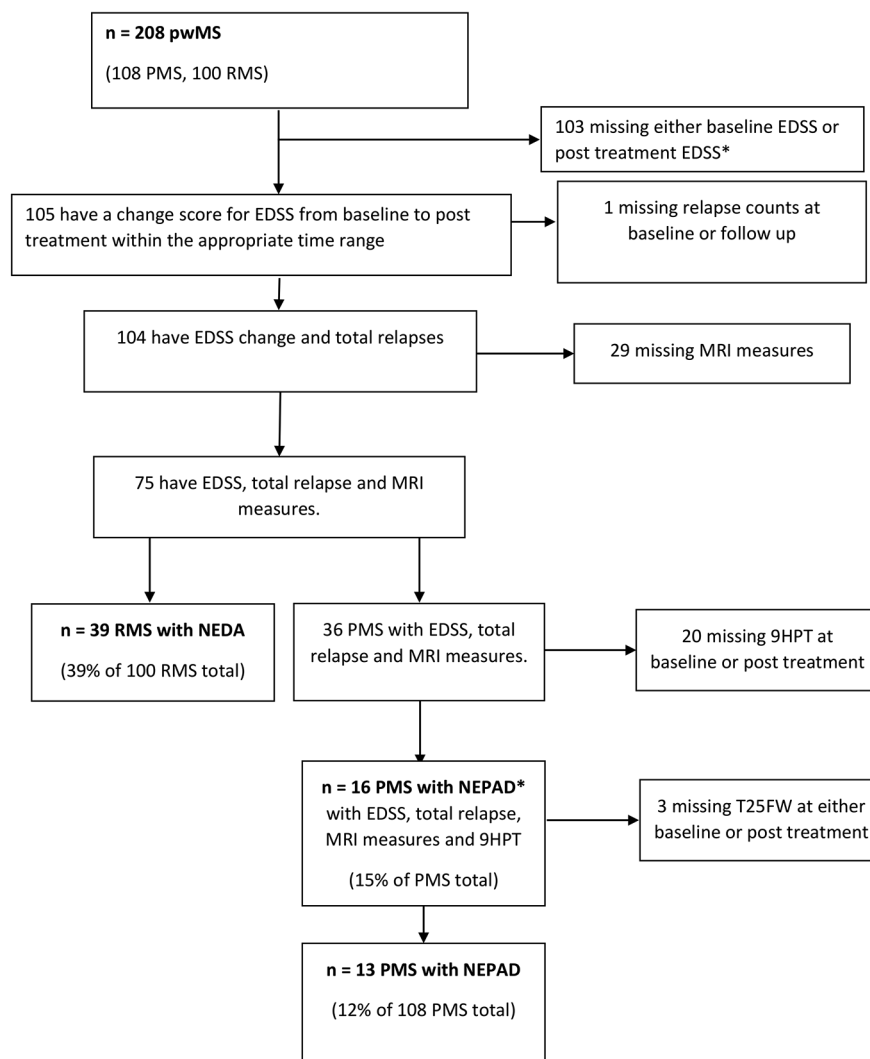
Division of Psychological  
Medicine and Clinical  
Neuroscience, School  
of Medicine, Cardiff  
University, Cardiff, UK

**Webb S**  
Institute of Neuroscience,  
Department of Neurology,  
Queen Elizabeth University  
Hospital, Glasgow, UK

**Gunnar Juliusson**  
Department of  
Hematology, Skåne  
University Hospital, Lund,  
Sweden

Stem Cell Centre,  
Department of Laboratory  
Medicine, Lund University,  
Lund, Sweden

\*These authors  
contributed equally to this  
paper.



**Figure 2.** CONSORT flow diagram showing patient selection for No Evidence of Disease Activity (NEDA), No Evidence of Progression or Active Disease (NEPAD) and NEPAD less the Timed 25 foot Walking Test (NEPAD\*) analysis based on criteria for data completeness.

defined as no evidence of disability progression measured using the EDSS, absence of relapses and of MRI activity. NEPAD was defined as no evidence of disability progression measured using EDSS, absence of progression on T25FW and 9HPT and absence of both relapses and MRI activity. NEPAD\* was defined as NEPAD disregarding the T25FW.

### Statistical analysis

Descriptive statistics are reported as mean/median (range) for continuous variables and as frequencies (%) for categorical variables. Safety and para-clinical efficacy after two treatment courses

was compared to baseline. The analysis was performed using Stata 16.

### Results

Between October 2014 and November 2018, a total of 208 pwMS (131 females, 77 males) received at least one course of Litak® (Table 1); 196 patients (94%) completed two courses. See Table 1 for demographic and clinical characteristics. Age at baseline was 44 years (mean; range: 17–72 years). Disease duration was 11 years (mean; range: 1–48 years). One-hundred patients had relapsing (RMS) and 108 progressive (PMS) disease. Of those with PMS, 62 had SPMS and



**Table 1.** Baseline demographics and clinical characteristics of 208 patients with multiple sclerosis treated with Litak<sup>®</sup>. Results are shown for the whole cohort and separately for relapsing MS (RMS) and progressive MS (PMS).

Disease course (n)	All (208)	RMS (100)	PMS (108)
Female/ male (n)	131/77	73/27	58/50
Mean age (years (range))	44 (17–72)	40 (17–70)	48 (21–72)
Mean disease duration (years (range))	11 (1–48)	9 (1–28)	13 (2–48)
Number of prior DMT/ immunotherapies (n)			
0/None	92	34	58
1	52	23	29
2	50	33	17
3	10	6	4
4	4	4	0
Median EDSS (range)	5.5 (0–8.5)	3.25 (0–7.5)	6 (1–8.5)
Active MRI <sup>a</sup> (n/total (%))	91/187 (48.6)	49/92 (53.3)	42/95 (44.2)
≥ 1 Gd <sup>+</sup> lesion/s (n/total (%))	45/172 (26.2)	23/82 (28)	22/90 (24.4)
Elevated CSF-NfL (n/total (%))	34/84 (40.5)	13/27 (48)	21/57 (36.8)

DMT, disease-modifying treatments; EDSS, expanded disability status scale; PMS, progressive; RMS, relapsing.  
<sup>a</sup>Active MRI was defined as MRI head showing at least one Gadolinium-DTPA positive (Gd<sup>+</sup>) lesion on T<sub>1</sub> weighted and/or new lesion/s on T<sub>2</sub> weighted MRI head compared to a reference scan acquired 4.6 months (median; IQR 2.4, 7.8) previously. Baseline MRI data were unknown in *n* = 9 patients. In 21 patients (8 relapsing and 13 progressive MS) baseline MRI was not available. Of 42 pwPMS with baseline MRI activity, 39 had recorded relapse documentation. Of these 39, 4 pwPMS each had one relapse during the 12 months prior to starting cladribine. Gd was not administered in 14 patients (9 relapsing and 5 progressive MS). In one patient with relapsing MS Gd was administered but the MRI examination was terminated early. Disease duration was calculated from onset of the first symptom and was unknown in 17 patients (3 relapsing and 14 progressive MS). Baseline EDSS data were missing in 22 patients.

46 PPMS. EDSS was 5.5 (median: 0–8.5). One-hundred-and-thirteen patients were eligible for NHS DMT, but chose Litak<sup>®</sup> instead. Ninety-five patients were not eligible for NHS DMT. The cohort includes seven patients previously reported as case studies.<sup>12,20–22</sup>

Ninety-two patients (44%) were DMT naive; 116 (56%) received at least one licenced or off-label immunotherapy prior to Litak<sup>®</sup> treatment; 52 patients (26%) received one, 50 (24%) two, 10 (5%) three, and 4 (2%) four drug(s) prior to commencing Litak<sup>®</sup>. Of patients receiving DMT prior to Litak<sup>®</sup> treatment, 66 had RMS and 50 PMS. The last DMTs patients received prior to starting Litak<sup>®</sup> are listed in Table 2. The most common prior DMTs were dimethyl fumarate, fingolimod and beta interferons; 51 out of 116

(44%) patients started treatment with Litak<sup>®</sup> due to evidence of disease activity and/or clinical deterioration. This was based on MRI only in 13 (11%), relapses in 12 (10%), and clinical progression in 21 (18%); in three patients, no details of disease progression were documented. In three patients, both disease progression and MRI activity were detected. One patient had a relapse and detectable MRI activity, one switched from dimethyl fumarate due to MRI activity and problems with taking a daily tablet. One out of 116 pwMS received CladT 3.5 mg/kg over 2 years during both the CLARITY and CLARITY extension trials (total dose 7 mg/kg).<sup>23</sup> She then went onto interferon β-1a (Avonex<sup>®</sup>), 54 months after completing her second full treatment cycle with CladT. Due to MRI activity, she started Litak<sup>®</sup> after 7 months of Avonex<sup>®</sup> treatment.

**Table 2.** Overview of the last immunotherapy received prior to Litak® in 116 patients with multiple sclerosis.

	Immunotherapy prior to Litak® (N pwMS, %) <sup>a</sup>	Treatment duration (median, months (IQR))	Time between stopping prior immunotherapy and starting Litak® (median, months (IQR))
Dimethyl fumarate	38 (32.8)	13.3 (4.7, 22.4)	5.4 (2.7, 16.6)
Fingolimod	27 (23.3)	24 (17.3, 38.5)	2.9 (2.1, 7.5)
Interferon β-1a (Avonex®), IFN β-1a (Rebif®) & Interferon β-1b (Betaferon®)	15 (12.9)	72 (13.1, 84.1)	24 (8.3, 49.9)
Natalizumab	13 (11.2)	12 (7, 24)	10.9 (2.5, 28.6)
Glatiramer acetate	9 (7.8)	36 (2.5, 82.2)	2.6 (2.1, 12.8)
Mitoxantrone	4 (3.4)	13.5 (12.8, 14.2)	60.4 (46.9, 90.6)
Azathioprine	3 (2.6)	12.5 (6.8, 18.2)	79.4 (64.8, 79.6)
Alemtuzumab	2 (1.7)	30 (21, 39)	6 (3.1, 8.8)
Laquinimod	2 (1.7)	6 (3.4, 8.5)	12.8 (8.8, 16.8)
Cyclophosphamide	1 (0.9)	8 (8, 8)	31.2 (31.2, 31.2)
Methotrexate	1 (0.9)	75 (75, 75)	0.6 (0.6, 0.6)
Teriflunomide	1 (0.9)	1.4 (1.4, 1.4)	14.8 (14.8, 14.8)

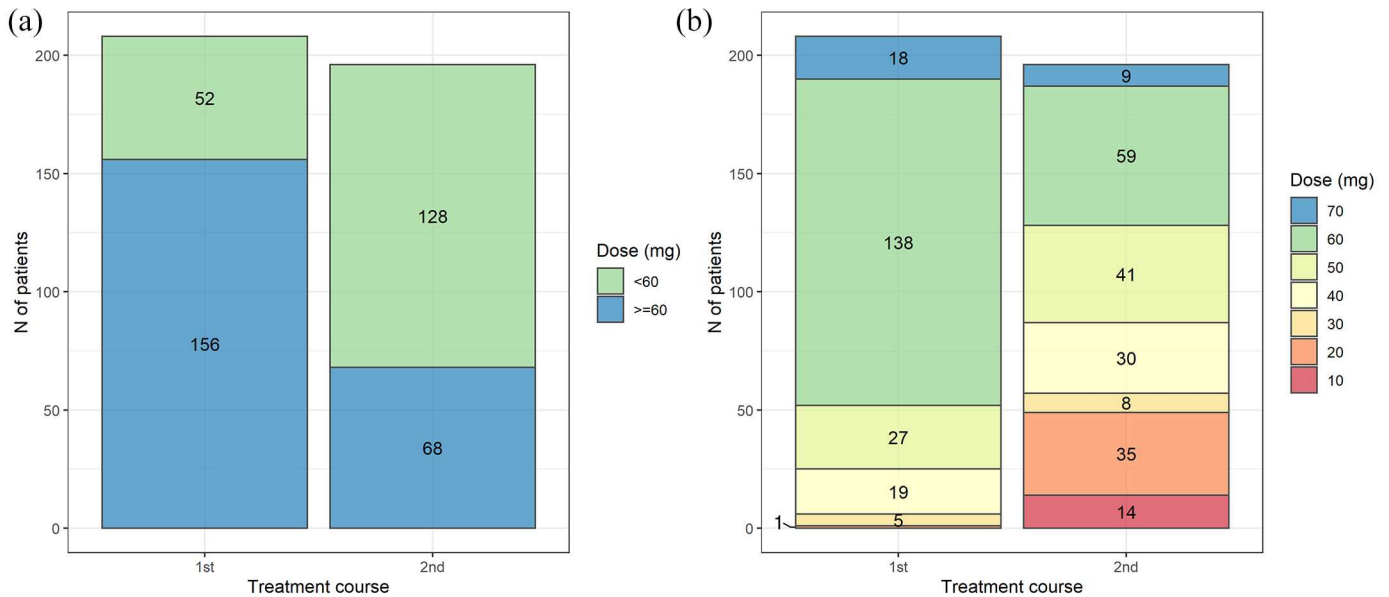
IQR, interquartile range.  
<sup>a</sup>Treatment duration in eight patients is unknown. Six/8 patients started and stopped immunotherapy within one year; their exact treatment duration is unknown.

In all, 65 out of 116 pwMS (56%) went on treatment with Litak® due to AEs, risk considerations of their current immunotherapy, or other reasons. Four patients had previously been treated with off-label immunotherapies (two mitoxantrone and one each cyclophosphamide and azathioprine). Six patients had been participating in clinical trials for PMS and were left without immunotherapy; two each participated in the ASCEND study of natalizumab in secondary progressive (SP) MS,<sup>24</sup> the INFORMS trial of fingolimod<sup>20,25</sup> in primary progressive (PPMS) and the Arpeggio trial of laquinimod in PPMS.<sup>26</sup>

One patient felt they had no benefit from taking dimethyl fumarate; one had been treated with interferon beta until diagnosis of SPMS and was left without immunotherapy; one was on fingolimod and considered at high risk of progressive multifocal leukoencephalopathy (PML); one had extended travel plans and switched within 4 weeks

from natalizumab to Litak® to avoid monthly infusions. Two patients developed anti-natalizumab antibodies. In two cases, no reasons were documented.

The reasons why 12 pwMS (6%) did not receive a second course of Litak® included personal choice in five and one each of difficulty travelling to our centre, switch to haematopoietic stem cell transplantation (HSCT) and switch to fingolimod due to relapse. Two of 208 patients deferred their second course due to planned pregnancy. One patient died prior to receiving their second course. One patient did not receive their second course due to ongoing lymphopenia ( $0.4 \times 10^9 \text{ L}^{-1}$ ). Notably, this patient underwent chemotherapy for Hodgkin's lymphoma 28 years prior to starting Litak®. Moreover, Litak® was preceded by dimethyl fumarate treatment for 22 months, which was associated with lymphopenia. Her most recent TLC, 37 months after her single course of Litak®, was  $0.9 \times 10^9 \text{ L}^{-1}$ .



**Figure 3.** (a) Proportion of patients receiving the maximum and reduced dose of Litak® at courses 1 and 2. (b) Total dose of Litak® administered at courses 1 and 2.

Of the 187 patients who had an MRI-head prior to their first cladribine injection, 91 (49%) displayed activity (Table 1).

Since our dosing schedule was adapted to both body weight and individual total lymphocyte count (TLC), only 75% received the maximum dose (60–70 mg) at their first course while 25% received a reduced dose based on TLC (Figure 1). Of 208 patients treated, 28 (14%) weighed >90 kg and thus received 40 mg (rather than 30 mg in pwMS ≤90 kg) during week 1 of their first treatment course. Of these 28 patients, 18 received 70 mg in total during their first course. Of 196 pwMS receiving a second course of Litak®, 35% received the full dose (60–70mg) while in 65% the dose was reduced based on their TLC (Figures 3A and 3B).

#### Safety and tolerability

See Table 3 for a summary of AEs. Overall, Litak® was well tolerated.

However, two patients died. The first patient was admitted to a different hospital. He was 61 years old and diagnosed with MS 16 years before starting Litak®. He died with an EDSS of 6.5, 44 weeks after completing his second course of Litak®. The death certificate stated ‘encephalitis’.

No microorganism was identified and no autopsy performed.

The second patient died from H1N1 influenza-associated pneumonia, as reported previously.<sup>22</sup> This 53-year-old woman had an EDSS of 8.5 and died 11 weeks after completing her first course of Litak®. Of note, her TLC was within normal range ( $1.1 \times 10^9 \text{ L}^{-1}$ ) 4 weeks after completing the course, but was then admitted at the beginning of week 11 with pneumonia and grade 4 lymphopenia<sup>22</sup>; she died shortly after.

One case of grade 3 invasive ductal carcinoma/high-grade ductal carcinoma in situ occurred (lymph node negative/HER2-negative/ER-positive), 10 months after completing the second course of Litak®. Breast lumpectomy followed by radiotherapy was undertaken. The patient’s oncotype Recurrence Score was 23. No chemotherapy was given. She has fully recovered with no evidence of malignancy on two annual follow-up mammograms and remains on treatment with tamoxifen.

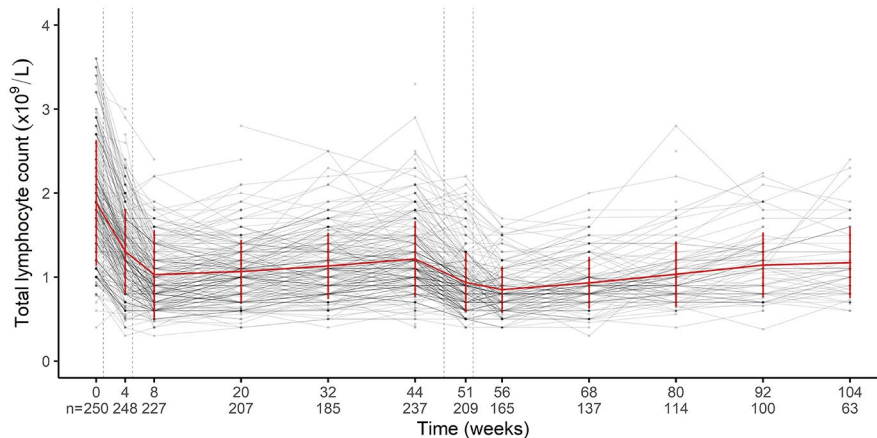
As reported previously,<sup>9,21</sup> one patient suffered a myocardial infarction 6 weeks after starting Litak® and three developed a severe allergic skin reaction (SASR) with complete resolution within weeks on steroids and antihistamines.



**Table 3.** Overview of adverse events in a cohort of 208 patients with multiple sclerosis.

System	Adverse event	N
Gastrointestinal (1%)	Nausea	1
	Diarrhoea	1
	Colitis	1
CNS (12%)	Pain (headache, trigeminal neuralgia, neuropathic)	2, 1, 2
	Fatigue	5
	MS Relapse	9
	Tremors, spasms	2
	Bladder dysfunction	1
	Parkinson's disease	1
	Encephalitis (deceased)	1
Skin (6%)	Shingles	5
	Alopecia	1
	Rash	6
Cardiovascular (0.5%)	ST-elevation myocardial infarction	1
Infections & immunity (10%)	Aspiration pneumonia & H1N1 (deceased)	1
	Abnormal smear	3
	Urinary tract infection	8
	Ear infection	2
	Aspiration pneumonia	3
	Flare-up psoriasis	1
	Flu-like symptoms	2
Metabolic (1%)	Thyroid disorder	2
	Irregular menstruation	1
Others (3%)	Neck of femur fracture	1
	Mild allergic reaction	1
	Pregnancy	2
	Acute kidney injury	1
	Anaemia	1
Malignancy (0.5%)	Breast cancer	1

CNS, central nervous system; MS, multiple sclerosis.



**Figure 4.** Total lymphocyte count (TLC) in patients treated with Litak<sup>®</sup> dose-adapted to body weight and TLC.

#### *Lymphocyte kinetics*

Of 208, 34 (16%) did not have any lymphopenia in the course of Litak<sup>®</sup> treatment (Figure 4). Grades 1 and 2 lymphopenia occurred in 49 (24%) and 113 (54%), respectively. Grade 3 lymphopenia occurred in 11 (5%): 3 patients at weeks 4, 2 patients at week 20, and in one patient each at weeks 32, 44, 51, 56, 68, and 92. Grade 4 lymphopenia was detected in the patient described above who died of influenza-associated pneumonia.

#### *Clinical effectiveness*

The clinical outcomes are summarised in Table 4 and Figure 5. Median EDSS after a mean follow-up of 17 months increased from 5.0 to 5.5. Of 116 patients where EDSS scores were available at two time points, 94 (81%) were stable or improved, while 22 out of 116 (19%) deteriorated. In 130 patients where relapse data were available at two time points, eight patients (6%) relapsed. The mean MRI follow-up period was 19 months. In 121 of 147 patients (82%) with MRI head data at two time points available, no T<sub>2</sub> or Gd<sup>+</sup> lesion activity was detected at follow-up.

In 27 of 100 patients with RMS, 9HPT measurements were obtained at baseline and follow-up (median 13 months; range: 12–14). Dominant hand 9HPT times at baseline and follow-up were 18.0 and 18.9 s, respectively. Nondominant 9HPT times at baseline and follow-up were 20.9 and 20.2 s, respectively. Median T25FW times at baseline and follow-up (median 13 months; range: 12–14) were 4.9 and 4.1 s ( $n = 24$ ).

In 31 out of 108 patients with PMS, 9HPT measurements were obtained at baseline and follow-up (median 13 months; range: 12–14). Dominant hand 9HPT times at baseline and follow-up were 25.0 and 26.3 s, respectively ( $n = 30$ ). Nondominant 9HPT times at baseline and follow-up were 34.0 and 34.5 s, respectively ( $n = 31$ ). Median T25FW times at baseline and follow-up (median 13 months; range: 12–16) were 7.6 and 6.8 s ( $n = 15$ ).

#### *NEDA, NEPAD, and NEPAD\**

The proportion of patients with RMS having NEDA (total  $n = 39$ ) at 18 months (median; range: 16–22) was 64% (95% CI: 47%, 79%; Figure 5). The proportion of patients with PMS (pwPMS) achieving NEPAD (total  $n = 13$ ) at 19 months (median; range: 15–25) was 62% (95% CI: 32%, 86%). The proportion of pwPMS achieving NEPAD\* (total  $n = 16$ ) was 56% (95% CI: 30%, 80%).

#### *Neurofilament light chain level in the cerebro-spinal fluid*

In 23 out of 208 pwMS ( $n = 8$  pwRMS and 15 pwPMS), CSF-NfL results were obtained before and after treatment. In pwRMS, CSF was obtained at least 3 months after their last documented relapse in all but one case.<sup>27</sup> Baseline lumbar punctures were performed 48 days (median; IQR: 12, 178) prior to starting treatment. Follow-up CSF was collected 311 days (median; IQR: 311, 357) after treatment initiation. Thus, 19 of 23 patients had one course, and

**Table 4.** Clinical outcomes in patients with multiple sclerosis treated with Litak®.

Outcome	Baseline			Follow-up		
	All	RMS	PMS	All	RMS	PMS
Median EDSS (total $n = 116$ ; $n$ pwRMS = 58, $n$ pwPMS = 58)	5.0	3.0	6.0	5.5	3.0	6.5
Stable or improved (%)				94 (81)	55 (95)	39 (67)
Deteriorated (%)				22 (19)	3 (5)	19 (33)
T25FW (total $n = 39$ ; $n$ pwRMS = 24, $n$ pwPMS = 15) (average time, seconds)	6.3	4.9	7.6	5.55	4.1	6.8
9HPT (total $n = 57$ dominant ( $n$ pwRMS = 27, $n$ pwPMS = 30), $n = 58$ nondominant ( $n$ pwRMS = 27, $n$ pwPMS = 31))						
Dominant (average time, seconds)	21.5	18.0	25.0	21.7	18.9	26.3
Nondominant (average time, seconds)	23.7	20.9	34.0	23.5	20.2	34.5
Relapses (total $n = 130$ ; $n$ pwRMS = 61, $n$ pwPMS = 69)						
Patients (%)	36 (28)	27 (44)	9 (13)	8 (6)	6 (10)	2 (3)
MRI (total $n = 147$ ; $n$ pwRMS = 77, $n$ pwPMS = 70)						
Gd <sup>+</sup> and/or new T <sub>2</sub> lesions (%)	71 (48)	37 (48)	34 (49)	26 (18)	19 (25)	7 (10)
No new lesions (%)	76 (52)	40 (52)	36 (51)	121 (82)	58 (75)	63 (90)

EDSS, expanded disability status scale; 9HPT, Nine-hole-peg-test; T25FW, Timed 25 foot walking-test; MRI, Magnetic resonance imaging; PMS, progressive multiple sclerosis; RMS, relapsing multiple sclerosis.  
Outcomes at baseline and follow-up for patients with data at both timepoints available. EDSS and relapse follow-up period was 17 months (mean; range 14–21); MRI follow-up period of 19 months (mean; range: 16–23). Nine-hole-peg test follow-up period was 13 months (mean; range 12–14). Timed-25-foot-walking test follow-up period was 13 months (mean; range: 12–16).

3 of 23 two courses of Litak® completed at the time follow-up CSF was collected. One patient had their follow-up LP between weeks 1 and 5 of their second treatment course.

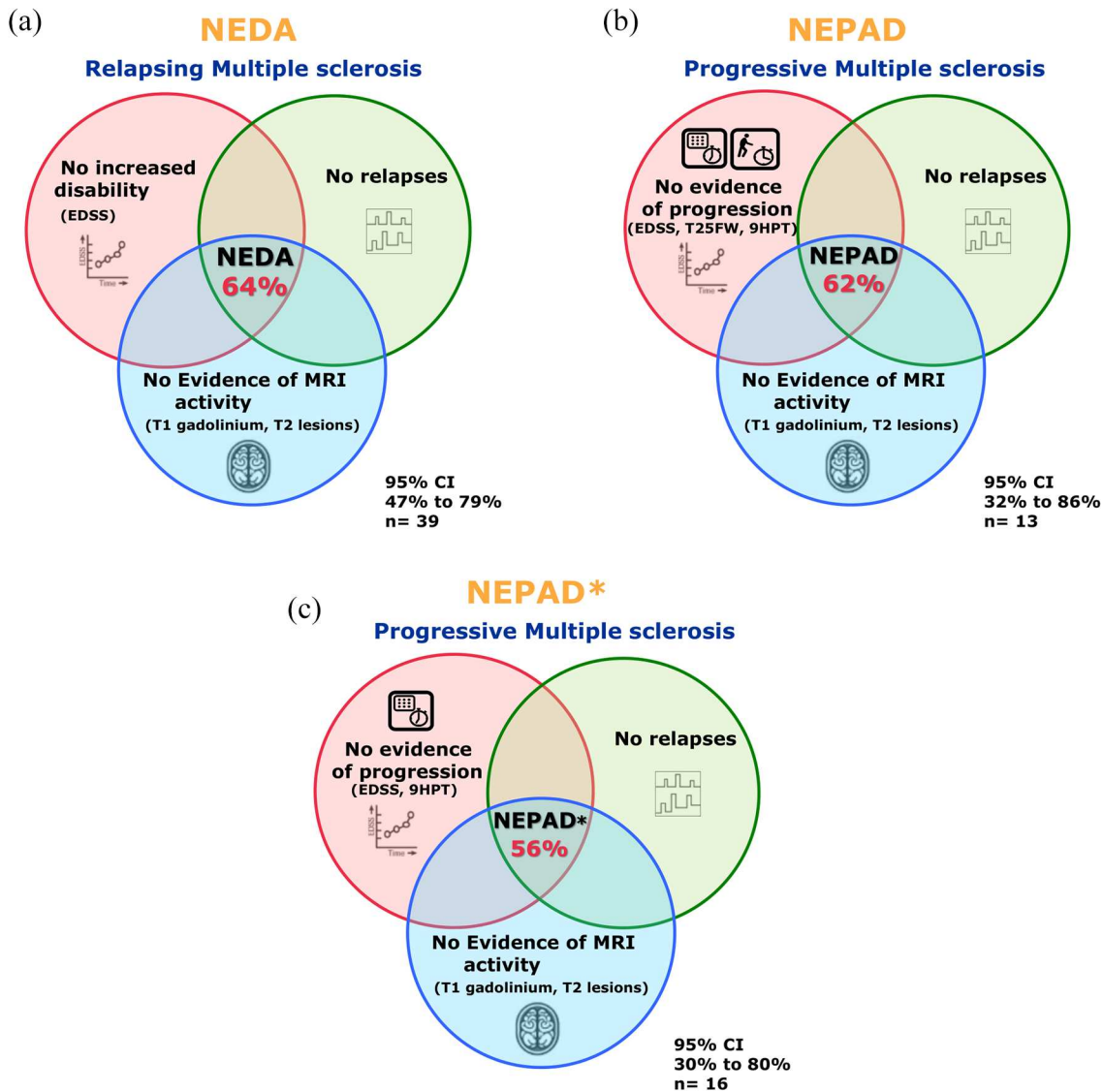
CSF-NfL levels in the current cohort were 652 pg/mL (mean; IQR: 458–1063) and 334 pg/mL (mean; IQR: 186–505) at baseline and follow-up, respectively ( $p < 0.01$ ; Wilcoxon signed rank test). Of the 13 out of 23 pwMS whose CSF-NfL was above ULN at baseline, 10 had normal levels at follow-up (Figure 6). In all three patients where CSF-NfL did not fall below their age-adjusted ULN (see below), NfL nevertheless dropped significantly in two of three from extremely high baseline levels (by 73% and 80%), after a single course of Litak®.<sup>12</sup>

### Discussion

Whilst the availability of highly effective DMT has significantly improved for patients with RMS,<sup>28</sup>

access to treatment for many pwMS remains limited, including patients with PMS and an EDSS of  $\geq 6.5$ .<sup>14</sup> Using Litak® off-label enabled treatment decisions based on the biology of MS as an immune-mediated disease throughout its course,<sup>29</sup> rather than cost-effectiveness criteria forming the basis of DMT eligibility. In particular, providing Litak® on a compassionate basis enabled the collection of preliminary data on the feasibility, safety, and potential effectiveness of a potent immunotherapy in people with advanced PMS. To identify treatments for this cohort of patients is among the top priorities of MS charities Worldwide.<sup>30,31</sup>

Following on from our early experience with Litak®,<sup>9</sup> we have now gathered data in a relatively large cohort of MS patients across the disease spectrum, heterogeneous in terms of age, disease course and duration, disability level, and prior interventions. The majority ( $n = 116$ ) moved



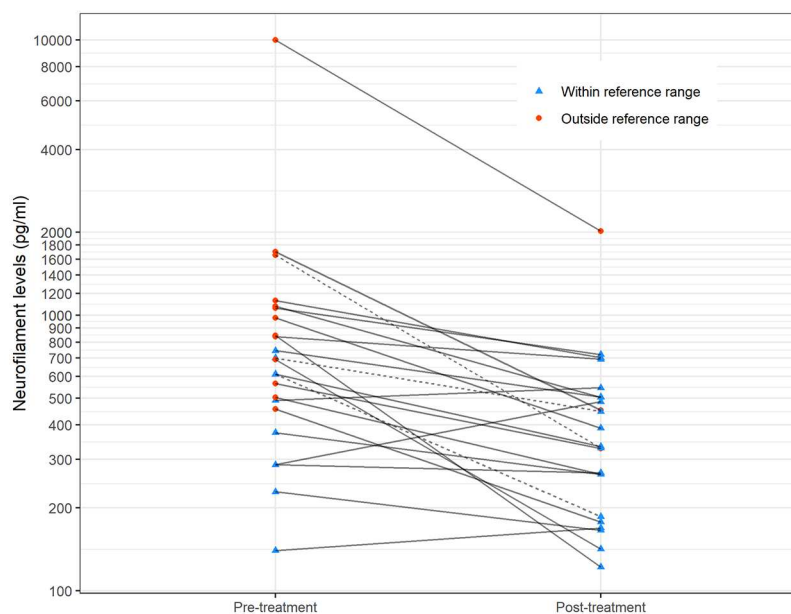
**Figure 5.** Composite measures indicating effectiveness of Litak® in patients with relapsing and progressive multiple sclerosis. (a) Venn diagrams representing the proportion of patients achieving No Evidence of Disease Activity (NEDA), (b) No Evidence of Progression or Active Disease (NEPAD), and (c) NEPAD excluding the Timed-25-foot-Walking-Test (NEPAD\*). CI, confidence interval.

from a different immunotherapy to Litak®. In 77 of 116 patients (66%), transition to treatment with Litak® commenced within less than 6 months (Table 2), a time lapse short enough to be considered a ‘switch’ period between immunotherapies.

Two of our patients died in the context of receiving Litak®. In both cases, a causal relationship remains uncertain. While the treatment may have contributed to the risk of contracting H1N1 influenza in patient 1, TLC was within normal range 7 weeks before the patient’s rapid decline and

death. Unfortunately, we were unable to obtain more detailed information about patient 2 who reportedly died with encephalitis of unknown cause, 44 weeks after completing his second course of Litak®.

Skin-related AEs, including shingles, were seen in 6%, including three previously reported cases of SASR.<sup>21</sup> A recent report on 239 pwMS treated with CladT detailed further skin reactions, and an overall incidence of 32%,<sup>32</sup> such that we conclude Litak® does not harbour a higher risk of



**Figure 6.** Cerebro-spinal fluid neurofilament light chain (CSF-NfL) levels in 23 patients with MS before and after treatment with Litak®.

skin pathologies than the licenced oral compound or indeed other highly effective immunotherapies used in MS.<sup>33</sup> Other AEs were rare. Of note, headaches were uncommon. While the phase III CLARITY trial of CladT in pWRMS reported headache in 21–24% (placebo: 17%),<sup>23</sup> head pains were detected in less than 3% in our cohort.

The large majority of pwMS underwent two courses of Litak®. Adjustment of the dose administered not only to body weight but also to individual TLC had the expected effect of reducing the number of patients with severe (grade 3) lymphopenia to 5%. Our safety-driven approach led to dose-adjustments based on low TLC in 25% during course 1 and 65% during course 2, with variable dose reductions.

We and others have previously suggested that depletion of memory B cells is crucial for effective disease control in pwMS.<sup>3,34</sup> Evidence suggests that a single course of Litak® leads to significant and long-term depletion of B-cell subsets, particularly memory B cells, for at least 12 months.<sup>4</sup> Very similar results have recently been reported in patients with RMS treated with CladT<sup>35</sup> in the context of the MAGNIFY-MS study (NCT04783935). Of note, ongoing depletion of memory B cells occurred while other, particularly naive B-cell

subsets, either normalised or exceeded their baseline level.<sup>4,35</sup>

We therefore expect that memory B cells remain depleted for at least 12 months after dosing with either parenteral<sup>4</sup> or oral<sup>35,36</sup> cladribine. Further follow-up studies, including T-cell subsets, are underway to confirm (or reject) this hypothesis. However, follow-up data from a cohort receiving only a single course of CladT suggest that even half of the licenced dose bears significant effectiveness. An observational cohort of 90 pWRMS with a baseline median EDSS of 5.25 receiving one course of CladT remained stable on the EDSS for 2 years in 80% of cases.<sup>37</sup>

The proportion of patients with RMS achieving NEDA following treatment with Litak® presented here is similar to the rate reported with CladT.<sup>38</sup> Our results also map onto findings in a recent Real World Evidence (RWE) cohort of  $n = 65$  pwMS treated with either i.v. or oral cladribine.<sup>39</sup> Although comparison of results is limited since the authors of that study did not distinguish between RMS and PMS in their analysis of NEDA, the total cladribine dose administered and, in those treated with the i.v. preparation, adjustment to TLC indicates a similar therapeutic approach to ours.<sup>39</sup>

The NEPAD rate in our cohort of PMS was in line with earlier evidence suggesting Litak® as a promising immunotherapy not only in RMS but also PMS.<sup>12,20,39,40</sup> In order to include pwMS unable to complete the T25FW, we introduced NEPAD\* removing the walking assessment. Both NEPAD and NEPAD\* data suggest a positive effect of Litak® in more than half of the patients with available baseline and follow-up data (Figure 5(b) and (c)). However, the number of patients with full follow-up datasets is small, and conclusions regarding efficacy in this cohort should therefore be made with caution. Moreover, sensitivity analysis revealed that patients with higher EDSS scores were more likely lost to follow-up (Supplementary Table 1) thereby introducing bias. Having said that, we did not detect significant differences in characteristics of pwRMS who had complete datasets to calculate NEDA versus those without (Supplementary Table 2).

Common reasons for limited follow-up data in RWE cohorts also applied to our dataset: (1) MRI was performed as part of routine care provision.



While acquisition protocols were not standardised across referring sites, they all included sequences routinely used in the care of patients with MS. Efforts are currently being undertaken to homogenise MRI protocols for pwMS across the UK.<sup>41,42</sup> (2) Time constraints precluding collection of a hands-on EDSS during routine NHS appointments. Although not used in the current cohort, we recently started using a web-based version of the EDSS,<sup>43</sup> which we expect will lead to a more complete dataset at the next cut-off. (3) Phased introduction of systematic 9HPT and T25FW data collection only since late 2016<sup>16</sup> limiting the number of data points available for NEPAD/NEPAD\*. While no firm conclusions can therefore be drawn, our data<sup>9,14</sup> underpinned the case for a placebo-controlled, multicentre trial of CladT in PMS and an EDSS of 6.5–8.5, which is now underway.<sup>44</sup> Our off-label cohort will remain under long-term follow-up including clinical decision-making regarding further DMT following two courses of Litak<sup>®</sup> treatment.

### Acknowledgements

The authors are grateful for support by the clinical BartsMS team based at The Royal London Hospital including Aine Redfern-Walsh, Charlotte Sellers, Emma Ridgway, Freya Edwards, Grace Anjorin, Tatjana Sayali, and Thamanna Begum. For critical input and support of this service, and/or referring patients for consideration of treatment with Litak<sup>®</sup>, we would like to thank Jeremy Chataway, Siobhan Leary, and Wallace Brownlee (The National Hospital for Neurology and Neurosurgery Queen Square, University College London Hospitals NHS Foundation Trust); Heather Wilson and Gerard Davies (Royal Free London NHS Foundation Trust); Peter Brex (King's College Hospital Foundation Trust); Victoria Williams (Guy's and St. Thomas' NHS Foundation Trust); Josephine Swanton (London North West University Healthcare NHS Trust); David Lieberman (Barts Health NHS Trust); Jeban Ganesalingam, Waqar Rashid and Romi Saha (Brighton and Sussex University Hospitals NHS Trust); Laura Petzold (Maidstone and Tunbridge Wells NHS Trust); David Rog (Salford Royal NHS Foundation Trusts); Nikos Evangelou (Nottingham University Hospitals NHS Trust), Gordon Mazibrada (University Hospitals Birmingham NHS Foundation Trust); Carolyn Young (The Walton Centre NHS Foundation Trust); Abhijit Chaudhuri (Barking, Havering and Redbridge

University Hospitals NHS Trust) and Emma Gray (MS Society UK).

### Author contributions

KS, DB and GG conceptualized and designed the study. GJ advised on the dosing schedule used. KAP, SDT and AS gathered the data. KAP and AM undertook the analysis. KAP and SDT drafted the the manuscript. All authors revised the manuscript for important intellectual content and approved the final version.

### Conflict of interest statement

The authors declared the following potential conflicts of interest with respect to the research, authorship, and/or publication of this article: K.A.P., S.D.T., Z.M., A.M., A.S., X.Z., O.Y., A.A., L.B., C.C., C.D., S.P., L.P.J., B.S. and S.W. have no conflicts of interest to declare. C.A.G. is a founder of NeuroCreare Ltd. J.M. has received honoraria and meeting support from Arvelle, Biogen, Novartis, Merck Serono, Roche and Sanofi Genzyme. C.B. has received travel costs and honoraria from Novartis, Genzyme, Teva and Biogen. K.C. has received honoraria and travel grants from Biogen, Sanofi-Genzyme and Roche. C.S.C. has received support for research, attendance of conferences, and consultancy from Biogen, GW Pharmaceuticals, Novartis, Teva, Merck, Morphosys, Roche, Sanofi Pasteur MSD and Sanofi Genzyme. R.A.F. has received honoraria and consultancy fees from Merck, TEVA, Novartis, Genzyme, GW Pharma, Allergan, Merz, Ipsen, and Biogen. R.A.F.'s current research activity is supported by the NIHR Biomedical Research Centre UCLH. L.F. has received consultancy fees from Biogen, Novartis, Roche and Genzyme. L.F. has received support for educational events from Biogen, Genzyme, Merck, Novartis, Teva, and the Neurology Academy. H.F. has received support from the Health Technology Assessment Programme (NIHR) and the UK MS Society. In the past 3 years, H.F. has been a local principal investigator for trials in MS funded by Novartis, Roche, and Biogen Idec and has taken part in advisory boards and consultancy for Biogen Idec, Merck, Novartis and Roche. B.G. has received personal compensation for consultancy from Merck, Roche, Biogen, Teva UK, and GW Pharma. B.G. has received unrestricted research grants from Biogen Idec, Merck, Bayer Healthcare, Teva UK, Novartis, and Genzyme. B.G. has received support for the attendance of clinical and research conferences

from Biogen, Merck, Bayer Healthcare, Teva UK, Novartis, Genzyme, and CelGene. J.H. has received consultancy fees, meeting support, or grants to support clinical services or research from: Biogen Idec, Sanofi Genzyme, Janssen Cilag, Merck, Neurodiem, Novartis, Roche, Celgene, Oxford pharmagenesis. Z.K. has received honoraria and travel costs from Roche, Biogen and Novartis. M.M. has received travel support and speaker honoraria from Biogen Idec, Genzyme, Merck-Serono, Novartis, Roche and Teva and consultation for Celgene, Merck-Serono, Novartis and Roche. O.P. has received speaking fees and travel expenses from, and/or served on advisory boards for, Biogen, Bayer, Celgene, Janssen, Merck Novartis, Roche, Sanofi and Teva. A.S. has received honoraria, travel grants and been a member of advisory boards for Biogen, Novartis, Teva, Celgene, Sanofi, and Merck. E.S. has received consulting fees and/or support to attend academic meetings from Merck. E.T. has received honorarium for consulting work from Novartis, Merck, Biogen, and Roche. E.T. has received travel grants to attend or speak at educational meetings from Biogen, Merck, Roche, Takeda, and Novartis. B.P.T. has received honoraria, travel grants, and been a member of advisory boards for Biogen, Merck Serono, Novartis, Sanofi Genzyme, and Roche. M.M. has received honoraria and travel costs from Genzyme, AbbVie, Roche, and Novartis. S.G. has received honoraria from Biogen Idec, Sanofi Genzyme, Janssen Cilag, Merck, Neurodiem, Novartis, Roche, and Teva and grant support from ECTRIMS, Genzyme, Merck, National MS Society, Takeda, and UK MS Society. G.J. has received speaker honoraria from and is a member of advisory boards of AbbVie, Astellas, Celgene, and Novartis. G.G. has received honoraria and meeting support from AbbVie Biotherapeutics, Biogen, Canbex, Ironwood, Novartis, Merck, Merck Serono, Roche, Sanofi Genzyme, Synthon, Teva, and Vertex. He also serves as chief editor for Multiple Sclerosis and Related Disorders. D.B. has received compensation from InMuneBio, Lundbeck, Merck, Novartis, Rock, and Teva. K.S. has received research support from Biogen, Merck KGaA, and Novartis, speaking honoraria from, and/or served in an advisory role for, Amgen, Biogen, EMD Serono, Merck KGaA, Novartis, Roche, Sanofi-Genzyme, and Teva; and remuneration for teaching activities from AcadeMe, Medscape and the Neurology Academy.

## Funding

The authors disclosed receipt of the following financial support for the research, authorship, and/or publication of this article: Supported, in part, by Multiple Sclerosis of Great Britain & Northern Ireland grant 69/2017. A donation by the Morris-Saady Charitable Trust is gratefully acknowledged. Z.M. has been supported by a 2016/17 ECTRIMS Clinical Training fellowship. R.A.F. has been supported in part by the National Institute for Health Research, University College London Hospitals, Biomedical Research Centre, London, UK.

## ORCID iDs

Kimberley Allen-Philbey  <https://orcid.org/0000-0003-1207-8625>

Gavin Giovannoni  <https://orcid.org/0000-0001-9995-1700>

Klaus Schmierer  <https://orcid.org/0000-0002-9293-8893>

## Supplemental material

Supplemental material for this article is available online.

## References

1. Walton C, King R, Rechtman L, *et al.* Rising prevalence of multiple sclerosis worldwide: insights from the Atlas of MS, third edition. *Mult Scler* 2020; 26: 1816–1821.
2. Gandey A. FDA rejects oral cladribine for multiple sclerosis. *Medscape* 2011, <https://www.medscape.com/viewarticle/738239> (accessed 24 May 2021).
3. Baker D, Marta M, Pryce G, *et al.* Memory B Cells are major targets for effective immunotherapy in relapsing multiple sclerosis. *EBioMedicine* 2017; 16: 41–50.
4. Ceronie B, Jacobs BM, Baker D, *et al.* Cladribine treatment of multiple sclerosis is associated with depletion of memory B cells. *J Neurol* 2018; 265: 1199–1209.
5. Baker D, Herrod SS, Alvarez-Gonzalez C, *et al.* Both cladribine and alemtuzumab may effect MS via B-cell depletion. *Neurol Neuroimmunol Neuroinflamm* 2017; 4: e360.
6. Pakpoor J, Disanto G, Altmann DR, *et al.* No evidence for higher risk of cancer in patients with multiple sclerosis taking cladribine. *Neurol Neuroimmunol Neuroinflamm* 2015; 2: e158.

7. Afolabi D, Albor C, Zalewski L, *et al.* Positive impact of cladribine on quality of life in people with relapsing multiple sclerosis. *Mult Scler* 2018; 24: 1461–1468.
8. England NHS. NHS England » NHS England strikes new deals to make two new innovative treatments available routinely on the NHS, <https://www.england.nhs.uk/2017/11/nhs-england-strikes-new-deals-to-make-two-new-innovative-treatments-available-routinely-on-the-nhs/> (accessed 21 March 2021).
9. Mao Z, Álvarez-González C, Allen-Philbey K, *et al.* Treating the ineligible: disease modification in people with multiple sclerosis beyond NHS England commissioning policies. *Mult Scler Relat Disord* 2019; 27: 247–253.
10. Liliemark J, Albertioni F, Hassan M, *et al.* On the bioavailability of oral and subcutaneous 2-chloro-2'-deoxyadenosine in humans: alternative routes of administration. *J Clin Oncol* 1992; 10: 1514–1518.
11. BartsMS. Cladribine information pack, <https://www.slideshare.net/KlausSchmierer/bartsms-infosafetyconsentpackjuly-2018> (accessed 9 December 2020).
12. Yildiz O, Mao Z, Adams A, *et al.* Disease activity in progressive multiple sclerosis can be effectively reduced by cladribine. *Mult Scler Relat Disord* 2018; 24: 20–27.
13. Litak – Summary of product characteristics, [https://www.ema.europa.eu/en/documents/product-information/litak-epar-product-information\\_en.pdf](https://www.ema.europa.eu/en/documents/product-information/litak-epar-product-information_en.pdf)
14. Mao Z, Álvarez-Gonzalez C, De Trane S, *et al.* Cladribine: off-label disease modification for people with multiple sclerosis in resource-poor settings. *Mult Scler J Exp Transl Clin* 2018; 4: 1–7.
15. Kurtzke JF. Rating neurologic impairment in multiple sclerosis: an expanded disability status scale (EDSS). *Neurology* 1983; 33: 1444–1452.
16. Allen-Philbey K, Middleton R, Tuite-Dalton K, *et al.* Can we improve the monitoring of people with multiple sclerosis using simple tools, data sharing, and patient engagement. *Front Neurol* 2020; 11: 464.
17. Petzold A, Altintas A, Andreoni L, *et al.* Neurofilament ELISA validation. *J Immunol Methods* 2010; 352: 23–31.
18. Reyes S, Smets I, Holden D, *et al.* CSF neurofilament light chain testing as an aid to determine treatment strategies in MS. *Neurol Neuroimmunol Neuroinflamm* 2020; 7: e880.
19. Feys P, Lamers I, Francis G, *et al.* The Nine-Hole Peg Test as a manual dexterity performance measure for multiple sclerosis. *Mult Scler* 2017; 23: 711–720.
20. Alvarez-Gonzalez C, Adams A, Mathews J, *et al.* Cladribine to treat disease exacerbation after fingolimod discontinuation in progressive multiple sclerosis. *Ann Clin Transl Neurol* 2017; 4: 506–511.
21. Mateo-Casas M, Reyes S, O'Toole EA, *et al.* Severe skin reactions associated with cladribine in people with multiple sclerosis. *Mult Scler Relat Disord* 2020; 43: 102140.
22. Mateo-Casas M, Reyes S, De Trane S, *et al.* Severe lymphopenia after subcutaneous cladribine in a patient with multiple sclerosis: to vaccinate or not. *Eneurologicalsci* 2020; 21: 100279.
23. Giovannoni G, Comi G, Cook S, *et al.* A placebo-controlled trial of oral cladribine for relapsing multiple sclerosis. *N Engl J Med* 2010; 362: 416–426.
24. Kapoor R, Ho P-R, Campbell N, *et al.* Effect of natalizumab on disease progression in secondary progressive multiple sclerosis (ASCEND): a phase 3, randomised, double-blind, placebo-controlled trial with an open-label extension. *Lancet Neurol* 2018; 17: 405–415.
25. Lublin F, Miller DH, Freedman MS, *et al.* Oral fingolimod in primary progressive multiple sclerosis (INFORMS): a phase 3, randomised, double-blind, placebo-controlled trial. *Lancet* 2016; 387: 1075–1084.
26. Giovannoni G, Knappertz V, Steinerman JR, *et al.* A randomized, placebo-controlled, phase 2 trial of laquinimod in primary progressive multiple sclerosis. *Neurology* 2020; 95: e1027–40.
27. Lycke JN, Karlsson JE, Andersen O, *et al.* Neurofilament protein in cerebrospinal fluid: a potential marker of activity in multiple sclerosis. *J Neurol Neurosurg Psychiatry* 1998; 64: 402–404.
28. Schmierer K, Sørensen PS and Baker D. Highly effective disease-modifying treatment as initial MS therapy. *Curr Opin Neurol* 2021; 34: 286–294.
29. Luchetti S, Franssen NL, van Eden CG, *et al.* Progressive multiple sclerosis patients show substantial lesion activity that correlates with clinical disease severity and sex: a retrospective autopsy cohort analysis. *Acta Neuropathol* 2018; 135: 511–528.
30. Multiple Sclerosis Top 10, <https://www.jla.nihr.ac.uk/priority-setting-partnerships/multiple-sclerosis/top-10-priorities/> (accessed 14 July 2021).

31. Understand, prevent and reverse progression 2020, <https://www.progressivemsaalliance.org/what-we-do/accelerate-treatments/> (accessed 14 July 2021).
32. Rolfes L, Pfeuffer S, Hackert J, *et al.* Skin reactions in patients with multiple sclerosis receiving cladribine treatment. *Neurol Neuroimmunol Neuroinflamm* 2021; 8: e990.
33. Arvin AM, Wolinsky JS, Kappos L, *et al.* Varicella-zoster virus infections in patients treated with fingolimod: risk assessment and consensus recommendations for management. *JAMA Neurol* 2015; 72: 31–39.
34. Longbrake EE and Cross AH. Effect of multiple sclerosis disease-modifying therapies on B Cells and humoral immunity. *JAMA Neurol* 2016; 73: 219–225.
35. Wiendl H, Schmierer K, Hodgkinson S, *et al.* Characterization of peripheral immune cell dynamics and repopulation patterns in the first 12 months of cladribine tablets treatment: MAGNIFY-MS study. *Neurology* 2021; 96: 2235.
36. Moser T, Schwenker K, Seiberl M, *et al.* Long-term peripheral immune cell profiling reveals further targets of oral cladribine in MS. *Ann Clin Transl Neurol* 2020; 7: 2199–2212.
37. Lizak N, Hodgkinson S, Butler E, *et al.* Real-world effectiveness of cladribine for Australian patients with multiple sclerosis: an MSBase registry substudy. *Mult Scler* 2021; 27: 465–474.
38. Giovannoni G, Cook S, Rammohan K, *et al.* Sustained disease-activity-free status in patients with relapsing-remitting multiple sclerosis treated with cladribine tablets in the CLARITY study: a post-hoc and subgroup analysis. *Lancet Neurol* 2011; 10: 329–337.
39. Bose G, Rush C, Atkins HL, *et al.* A real-world single-centre analysis of alemtuzumab and cladribine for multiple sclerosis. *Mult Scler Relat Disord* 2021; 52: 102945.
40. Rice GPA, Filippi M, Comi G, *et al.* Cladribine and progressive MS: clinical and MRI outcomes of a multicenter controlled trial. *Neurology* 2000; 54: 1145–1155.
41. Schmierer K, Campion T, Sinclair A, *et al.* Towards a standard MRI protocol for multiple sclerosis across the UK. *Br J Radiol* 2019; 92: 20180926.
42. Fernandes L, Allen CM, Williams T, *et al.* The contemporary role of MRI in the monitoring and management of people with multiple sclerosis in the UK. *Mult Scler Relat Disord* 2021; 55: 103190.
43. Leddy S, Hadavi S, McCarren A, *et al.* Validating a novel web-based method to capture disease progression outcomes in multiple sclerosis. *J Neurol* 2013; 260: 2505–2510.
44. Lieberman D, Mangat H, Allen-Philbey K, *et al.* Cladribine to halt deterioration in people with advanced multiple sclerosis (ChariotMS) [Poster] September 11–13 2020, <https://clinicaltrials.gov/ct2/show/NCT04695080>