

This is a repository copy of *Experimental Selection of Paromomycin Resistance in Leishmania donovani Amastigotes Induces Variable Genomic Polymorphisms*.

White Rose Research Online URL for this paper:

<https://eprints.whiterose.ac.uk/178338/>

Version: Published Version

---

**Article:**

Hendrickx, Sarah, Reis-Cunha, João Luís, Forrester, Sarah et al. (2 more authors) (2021) Experimental Selection of Paromomycin Resistance in *Leishmania donovani* Amastigotes Induces Variable Genomic Polymorphisms. *Microorganisms*. 1546. ISSN 2076-2607

<https://doi.org/10.3390/microorganisms9081546>

---

**Reuse**

This article is distributed under the terms of the Creative Commons Attribution (CC BY) licence. This licence allows you to distribute, remix, tweak, and build upon the work, even commercially, as long as you credit the authors for the original work. More information and the full terms of the licence here:

<https://creativecommons.org/licenses/>

**Takedown**

If you consider content in White Rose Research Online to be in breach of UK law, please notify us by emailing [eprints@whiterose.ac.uk](mailto:eprints@whiterose.ac.uk) including the URL of the record and the reason for the withdrawal request.



## Article

# Experimental Selection of Paromomycin Resistance in *Leishmania donovani* Amastigotes Induces Variable Genomic Polymorphisms

Sarah Hendrickx <sup>1,†</sup> , João Luís Reis-Cunha <sup>2,†</sup>, Sarah Forrester <sup>2</sup> , Daniel C. Jeffares <sup>2,\*</sup> , † and Guy Caljon <sup>1,\*</sup> , † 

<sup>1</sup> Laboratory of Microbiology, Parasitology and Hygiene (LMPH), University of Antwerp, 2610 Antwerp, Belgium; sarah.hendrickx@uantwerpen.be

<sup>2</sup> Department of Biology and York Biomedical Research Institute, University of York, York YO31 5DD, UK; jaumlrc@gmail.com (J.L.R.-C.); sarah.forrester@york.ac.uk (S.F.)

\* Correspondence: daniel.jeffares@york.ac.uk (D.C.J.); guy.caljon@uantwerpen.be (G.C.); Tel.: +32-3-265-26-01 (G.C.)

† These authors contributed equally to this work.

‡ Share senior authorship.

**Abstract:** The relatively high post-treatment relapse rates of paromomycin (PMM) in visceral leishmaniasis treatment and the swift emergence of experimental drug resistance challenge its broad application and urge for rational use and monitoring of resistance. However, no causal molecular mechanisms to *Leishmania* PMM resistance have been identified so far. To gain insights into potential resistance mechanisms, twelve experimentally selected *Leishmania donovani* clonal lines and the non-cloned preselection population, with variable degrees of PMM resistance, were subjected to whole genome sequencing. To identify genomic variations potentially associated with resistance, SNPs, Indels, chromosomal copy number and gene copy number variations were compared between the different parasite lines. A total of 11 short nucleotide variations and the copy number alterations in 39 genes were correlated to PMM resistance. Some of the identified genes are involved in transcription, translation and protein turn-over (*transcription elongation factor-like protein*, *RNA-binding protein*, *ribosomal protein L1a*, *60S ribosomal protein L6*, *eukaryotic translation initiation factor 4E-1*, *proteasome regulatory non-ATP-ase subunit 3*), virulence (*major surface protease gp63*, *protein-tyrosine phosphatase 1-like protein*), mitochondrial function (*ADP/ATP mitochondrial carrier-like protein*), signaling (*phosphatidylinositol 3-related kinase*, *protein kinase putative* and *protein-tyrosine phosphatase 1-like protein*) and vesicular trafficking (*ras-related protein RAB1*). These results indicate that, in *Leishmania*, the aminoglycoside PMM affects protein translational processes and underlines the complex and probably multifactorial origin of resistance.

**Keywords:** paromomycin; resistance; sequencing; SNP; CNV



**Citation:** Hendrickx, S.; Reis-Cunha, J.L.; Forrester, S.; Jeffares, D.C.; Caljon, G. Experimental Selection of Paromomycin Resistance in *Leishmania donovani* Amastigotes Induces Variable Genomic Polymorphisms. *Microorganisms* **2021**, *9*, 1546. <https://doi.org/10.3390/microorganisms9081546>

Academic Editor: José María Alunda

Received: 18 June 2021

Accepted: 13 July 2021

Published: 21 July 2021

**Publisher's Note:** MDPI stays neutral with regard to jurisdictional claims in published maps and institutional affiliations.



**Copyright:** © 2021 by the authors. Licensee MDPI, Basel, Switzerland. This article is an open access article distributed under the terms and conditions of the Creative Commons Attribution (CC BY) license (<https://creativecommons.org/licenses/by/4.0/>).

## 1. Introduction

*Leishmania* parasites belong to the family of Trypanosomatidae and are unicellular flagellates that are transmitted between different vertebrates via the bites of infected sand flies. Depending on the species, *Leishmania* can cause either cutaneous (CL), mucocutaneous (MCL) or visceral leishmaniasis (VL). These parasites are known for their high plasticity and rapid adaptation to different environmental conditions, such as drug exposure [1].

The efficacy of the aminoglycoside antibiotic paromomycin (PMM) against both CL and VL has been demonstrated in monotherapy and in combination with other anti-leishmanials, with cure rates up to 80% [2–6]. The relatively high post-treatment relapse rates challenge the broad application of PMM in VL treatment, and urge for rational use and monitoring of the emergence of resistance [7], particularly because several in vitro and in vivo laboratory studies demonstrated fairly easy selection of resistance both on promastigotes and intracellular amastigotes [8–11]. A stepwise increase of PMM pressure

onto promastigotes led to a decreased PMM susceptibility of both stages, whereas exposure of intracellular amastigotes in vitro or in vivo resulted in an amastigote-specific increase of PMM IC<sub>50</sub> [9]. This stage-dependent outcome disfavors the use of the promastigote stage for primary resistance monitoring and emphasizes the need for resistance markers to monitor the emergence and spread of PMM resistance in the field [9]. With the aim to discover putative PMM resistance markers and molecular mechanisms enrolled in PMM resistance, whole genome sequences of experimentally amastigote-selected clones with different levels of PMM susceptibility were compared among each other and to the wild-type (WT) drug-susceptible parent strain. This led to the identification of short-nucleotide variants (SNVs) and gene expansion/deletions that could be associated with PMM resistance.

## 2. Materials and Methods

Promastigotes of *L. donovani* MHOM/NP/03/BPK275/0-cl18, isolated within the frame of the EC Kaladrug-R project from a patient not responding to treatment with sodium stibogluconate, were sub-cultured twice weekly in HOMEM promastigote medium (Life technologies, Ghent, Belgium) at 25 °C. Resistance was selected in vitro on intracellular amastigotes, as previously described [9,12]. Twelve clonal isolates were obtained from the resulting polyclonal-resistant population (Table 1). The PMM and miltefosine (MIL) susceptibility of intracellular amastigotes was determined for each clone and the non-cloned population, as described previously [8]. In addition, their susceptibility to amphotericin B (AmB; Sigma Aldrich, Overijse, Belgium) was calculated to evaluate potential cross-resistance.

**Table 1.** Intracellular amastigote IC<sub>50</sub> values of the pre-selection population and the 12 different post-selection clones against paromomycin (PMM) and amphotericin B (AmB). Results are expressed as the average IC<sub>50</sub> (in µM) ± the standard error of the mean (SEM). The clones that were considered resistant (resistance index (RI) > 5) are indicated in bold. Those considered susceptible (RI < 2) are indicated in italics. All reported IC<sub>50</sub> values are the result of at least two independent experiments run in duplicate.

Strain	PMM IC <sub>50</sub> (µM) <sup>1</sup>	AmB IC <sub>50</sub> (nM)
Wild-type (preselection)	45.0 ± 5.6	9.7 ± 0.2
Clone 1	<b>417.4 ± 15.1</b>	20.9 ± 6.6
Clone 2	196.8 ± 11.2	15.4 ± 2.0
Clone 3	213.0 ± 7.3	19.6 ± 4.5
Clone 4	157.0 ± 9.6	22.4 ± 6.1
Clone 5	129.7 ± 13.1	10.5 ± 1.0
Clone 6	57.1 ± 6.8	11.8 ± 2.1
Clone 7	154.0 ± 14.9	22.0 ± 5.1
Clone 8	<b>313.1 ± 14.3</b>	15.3 ± 0.9
Clone 9	132.5 ± 9.0	13.8 ± 0.8
Clone 12	171.3 ± 5.7	13.7 ± 1.7
Clone 13	<b>310.2 ± 11.8</b>	17.0 ± 3.5
Clone 14	71.2 ± 2.8	ND

<sup>1</sup> These results have already been published elsewhere [9]. ND: Not done.

Promastigotes from twelve clones and the non-cloned population in exponential growth phase were used for DNA extraction by the QIAamp DNA Mini Kit according to the manufacturer's instructions (Qiagen, Antwerp, Belgium). Genomic DNA was used to generate paired-end libraries using the NEBNext Ultra II FS DNA library prep kit for Illumina sequencing (New England Biolabs, Ipswich, MA, USA), according to the manufacturer's protocol, and amplified using NEBNext multiplex oligos for Illumina (dual index primers, New England Biolabs). Pooled and barcoded libraries were sequenced to 2 × 150 bp on an Illumina HiSeq 3000 platform. Reads were mapped to the *L. donovani* BPK282A1 genome version 39 available from TriTrypDB using BWA mem [13,14]. The genome coverage was estimated based on the mean read depth of genes with non-outlier

depth coverages for each isolate, using BEDtools genomecov version 2.27.1 (BEDTools, version 2.27.1; A suite of utilities for comparing genomic features; Aaron Quinlan and Ira Hall; Bioinformatics: University of Oxford, Oxford, England 2010) [15] and GFF coordinates. Detailed descriptions of each read library are summarized in Supplementary Table S1.

Short-nucleotide variant (SNV) distribution and allele frequency variation among *L. donovani* isolates were used to estimate populational diversity and potential association of mutations with PMM resistance. SNVs were identified with a focus on single-nucleotide polymorphism (SNPs) and short insertion–deletion mutations (INDELS). Calls for each sample were generated with FreeBayes version 1.2.0 (FreeBayes, version 1.2.0; Haplotype-based variant detection from short-read sequencing; Eric Garrison and Gabor Marth; arXiv:1207.3907; 2012) [16], calling only on positions where the depth was at least 5 reads. SNVs were filtered by: quality > 2000, minimum global allele frequency (MAF) > 0.05, number of different alleles = 1, mapping quality and base quality of the reference and alternate allele > 40, and proportion of observed reference and alternate alleles which were supported by properly paired read fragments > 0.9, using VCFtools version 0.1.16 (VCFtools, version 0.1.16; The variant call format and VCFtools; Adam Auton, Petr Danecek and Anthony Marcketta; Bioinformatics: University of Oxford, Oxford, England 2011) [17] and BCFtools version 1.10.2 (BCFtools, version 1.10.2; Utilities for variant calling and manipulation VCFs and BCFs; Heng Li; Bioinformatics: University of Oxford, Oxford, England 2011) [18]. To identify SNVs that occurred during selection for PMM resistance, from the total of 7448 SNVs, we excluded the 5400 variants that presented MAF < 0.05 or low-quality calls, representing unreliable calls or variants that were present in all isolates, as these are simply differences between the isolates and the reference assembly. The sharing of SNV positions among the 13 isolates was estimated using BCFtools isec, and plotted in R using ggplot2. The populational genetic diversity ( $\pi$ ) was estimated with VCFtools window-pi, in 50 kb windows. The images of the diversity values of these windows along the 36 *L. donovani* chromosomes were generated in R, using ggplot2 (<https://cran.r-project.org/web/packages/ggplot2/index.html>; accessed on 19 July 2021).

To estimate fluctuation in the ‘within-clone allele frequency’ for each SNV, the frequency of the alternate allele was estimated by dividing the read depth of the alternate allele by the total number of reads that mapped in the position. The heatmap representing the fluctuations in alternate allele frequency along the chromosomes was generated in R, with the heatmap2 function, from the gplots library (<https://cran.r-project.org/web/packages/gplots/index.html>; accessed on 19 July 2021). *L. donovani* isolates were clustered based on the Manhattan distance of the allele frequency of all SNVs, by UPGMA (unweighted pair group method with arithmetic mean). SNV positions were drawn according to their chromosomal positions, or reordered based on clustering by UPGMA of their Manhattan distance. The genome-wide distribution density of the alternate allele frequencies of each *L. donovani* sequenced isolate was estimated in R, with the density function, and used to infer the parasite ploidy.

The potential impact of fluctuation in allele frequency of each SNV with PMM resistance was estimated by the Pearson correlation of the allele frequency and the isolate PMM IC<sub>50</sub>, in R, and the images were generated with ggplot2.

To evaluate the impact of gene and chromosomal copy alterations on PMM resistance, the copies of all *L. donovani* 8135 genes and 36 chromosomes were estimated for the 12 sequenced clonal lines and the non-cloned population, and compared with their PMM resistance profiles. To estimate gene copy numbers, the median read depth of each gene was calculated with BEDtools genomecov version 2.27.1 (BEDTools, version 2.27.1; a suite of utilities for comparing genomic features; Aaron Quinlan and Ira Hall; Bioinformatics: University of Oxford, Oxford, England 2010), using gene coordinates from *L. donovani* GFF version 39 from TriTrypDB. Read depths were transformed to relative copy number values (copies per haploid genome copies) by dividing the gene coverages by the genome coverage, estimated as the median coverage of non-outlier genes (Grubb’s tests, with

$p < 0.05$ ). The somy of each chromosome from each *L. donovani* clone was estimated based in the median coverage of non-outlier genes, as described by Reis-Cunha et al. [19]. Briefly, mapped reads were filtered by mapping quality 30 using SAMtools version 1.10 (SAMtools, version 1.10; Suite of programs for interacting with high-throughput sequencing data; Heng Li; Bioinformatics: University of Oxford, Oxford, England 2009) [20] and genes with outlier coverages were excluded, based on iterative Grubb's tests, with  $p < 0.05$ . The median read depth of all non-outlier genes in each chromosome was normalized by the genome coverage and considered as the chromosomal somy. The potential impact of each *L. donovani* gene copy number and chromosome somies on PMM resistance was estimated by Pearson correlation of the gene copy number or somy against clone PMM IC<sub>50</sub> values. All statistical analyses were carried out using R v3.6.2 (R, version 3.6.2; The R project for Statistical Computing; R core team; Vienna, Austria, 2019) [21], and graphical representations were generated with ggplot2 [22].

### 3. Results

#### 3.1. Amastigote Susceptibility to Paromomycin and Amphotericin B

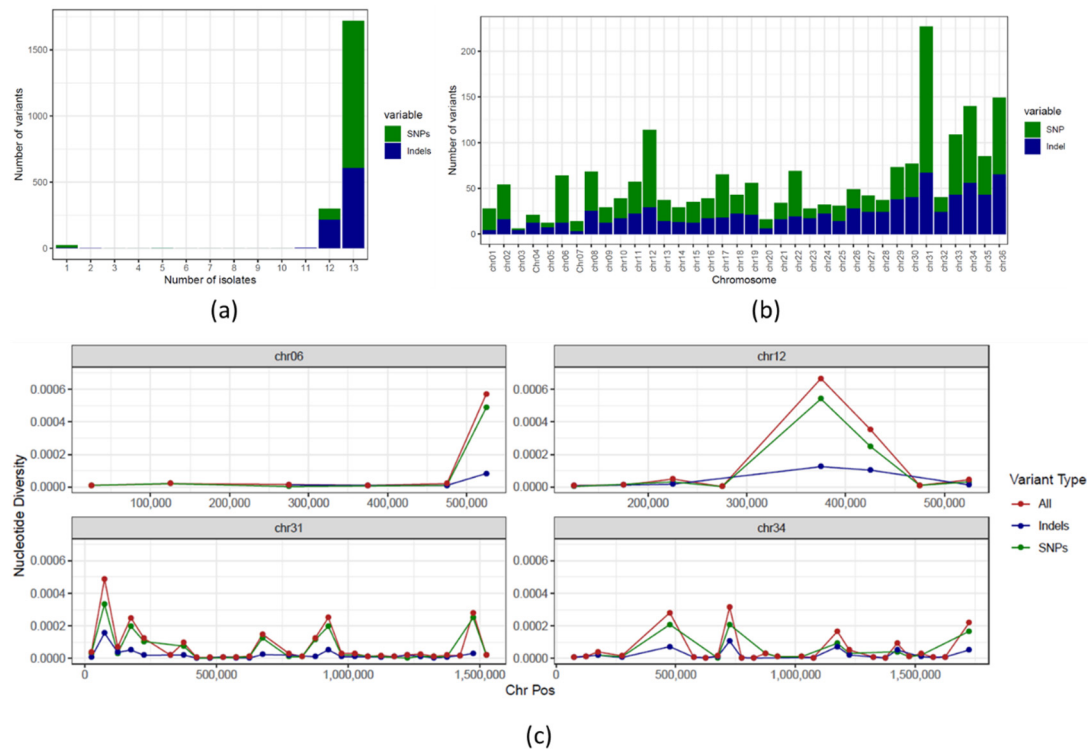
As described elsewhere [8], all in vitro selected clones showed lower susceptibility to PMM than the parent strain, in several cases achieving 5–10-fold IC<sub>50</sub> values (Table 1). To evaluate potential cross-resistance to other drugs, the intracellular drug susceptibility to amphotericin B was determined (Table 1). The in vitro susceptibility of this naturally antimony-resistant strain against pentavalent and trivalent antimonials remained unaltered, as did the susceptibility against MIL [9]. PMM and amphotericin B susceptibility were not significantly correlated, which reinforces that the developed PMM resistance is specific to this drug, and not a result of generic drug resistance mechanisms.

#### 3.2. SNPs and Indels

We detected 7448 single-nucleotide variants (SNV), where 2048 (1222 single-nucleotide polymorphisms (SNP) and 826 indel positions) vary among the evaluated *Leishmania* isolates (Supplementary Table S1). Overall, the majority of these positions were present in all post-selection clones (Figure 1a,b), which is expected given their similar origin. When looking at the genetic diversity ( $\pi$ ) between the different clones and the pre-selection sample (Supplementary Figure S1), chromosomes 6, 12 and 34 (mostly euploid) and chromosome 31 (aneuploid) had relatively high  $\pi$  spikes, which were generally a result of co-localization of SNPs and indels (Figure 1c). Even though the SNV positions were generally shared amongst most post-selection clones, variations in within-clone allele frequency patterns were observed (Figure 2). These inconsistent counts of reads from the two alleles may be due to gene duplications/losses. Therefore, SNVs in these clones were further compared at the allele frequency level in the downstream analyses. It is noteworthy that the genome-wide within-clone allele frequency patterns suggest that the progenitor isolate was triploid, as are all post-selection clones. We expect that the variation in within-clone allele frequencies is due to loss of heterozygosity due to fluctuating ploidy [23,24] and/or the difficulty in estimating true allele counts in a triploid sample.

To identify SNVs that associate with PMM resistance, we have compared within-clone allele frequencies to PMM IC<sub>50</sub> values. A total of 11 SNV positions were correlated with PMM resistance, from which 9 were located in intergenic regions and 2 resulted in synonymous mutations (Figure 3, Supplementary Figures S2 and S3). These SNVs were not clustered in close chromosomal regions and were dispersed over different regions and chromosomes. The intergenic SNPs on chromosomes 18 and 35 showed the strongest correlations with resistance and are located upstream of the *chaperone DnaJ protein* (LdBPK\_181410.1) and *aspartate aminotransferase* genes (LdBPK\_350840.1). The 2 SNPs resulting in synonymous mutations were found in genes LdBPK\_020680.1 (*ATP-dependent Clp protease subunit, heat-shock protein 78 (HSP78)*) and LdBPK\_362510.1 (*sterol 24-c-methyltransferase*) (Supplementary Table S2). For both genes, a negative correlation was found between the alternate allele frequency and PMM resistance, suggesting that loss

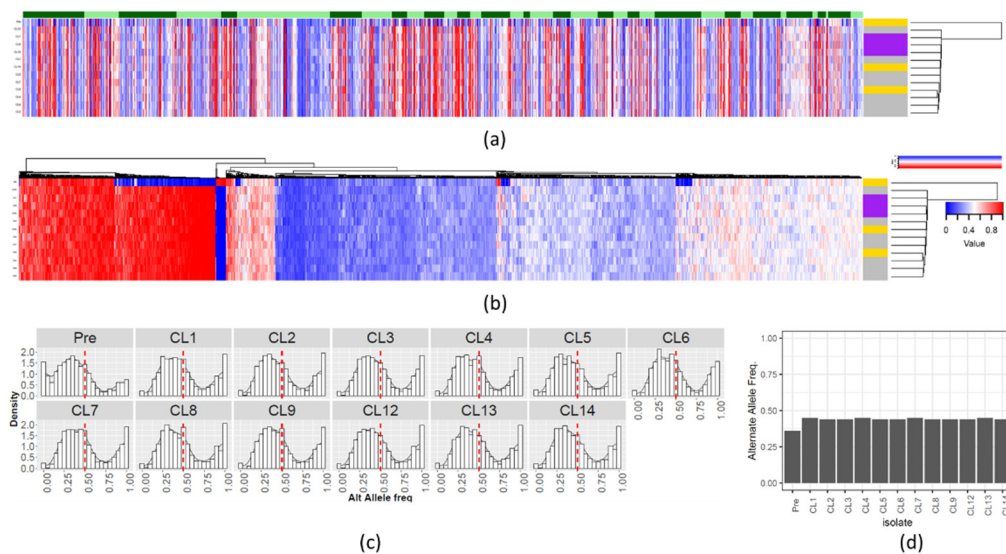
of the alternate alleles towards a reference-homozygous genotype correlates with PMM resistance. The synonymous SNP in *LdBPK\_020680.1* (UCG → UCC) results in a lower relative synonymous codon usage of the alternate codon (RSCU decrease from 1.439 to 1.115). For the *sterol 24-c-methyltransferase*, the synonymous mutation results in a higher frequency codon (UUU → UUC) with a substantial RSCU increase from 0.72 to 1.28 [25].



**Figure 1.** Genetic variability of the *L. donovani* clones: (a) Number of SNV positions that are shared between exactly 1 to 12 clones and the polyclonal population. The Y and X axis represent, respectively, the number of variants and the exact number of isolates in which the variant position was observed. A total of 84% of the SNV positions were present in all clones and the non-cloned population. (b) Number of SNPs and indels in each chromosome. (c) Genetic diversity ( $\pi$ ) in chromosomes 6, 12, 31 and 34 estimated using 50 kb windows. The Y and X axis represent, respectively, genetic diversity and chromosomal position. SNVs, indels and SNPs are represented in red, blue and green, respectively.

### 3.3. Chromosomal Copy Number Variation (CCNV)

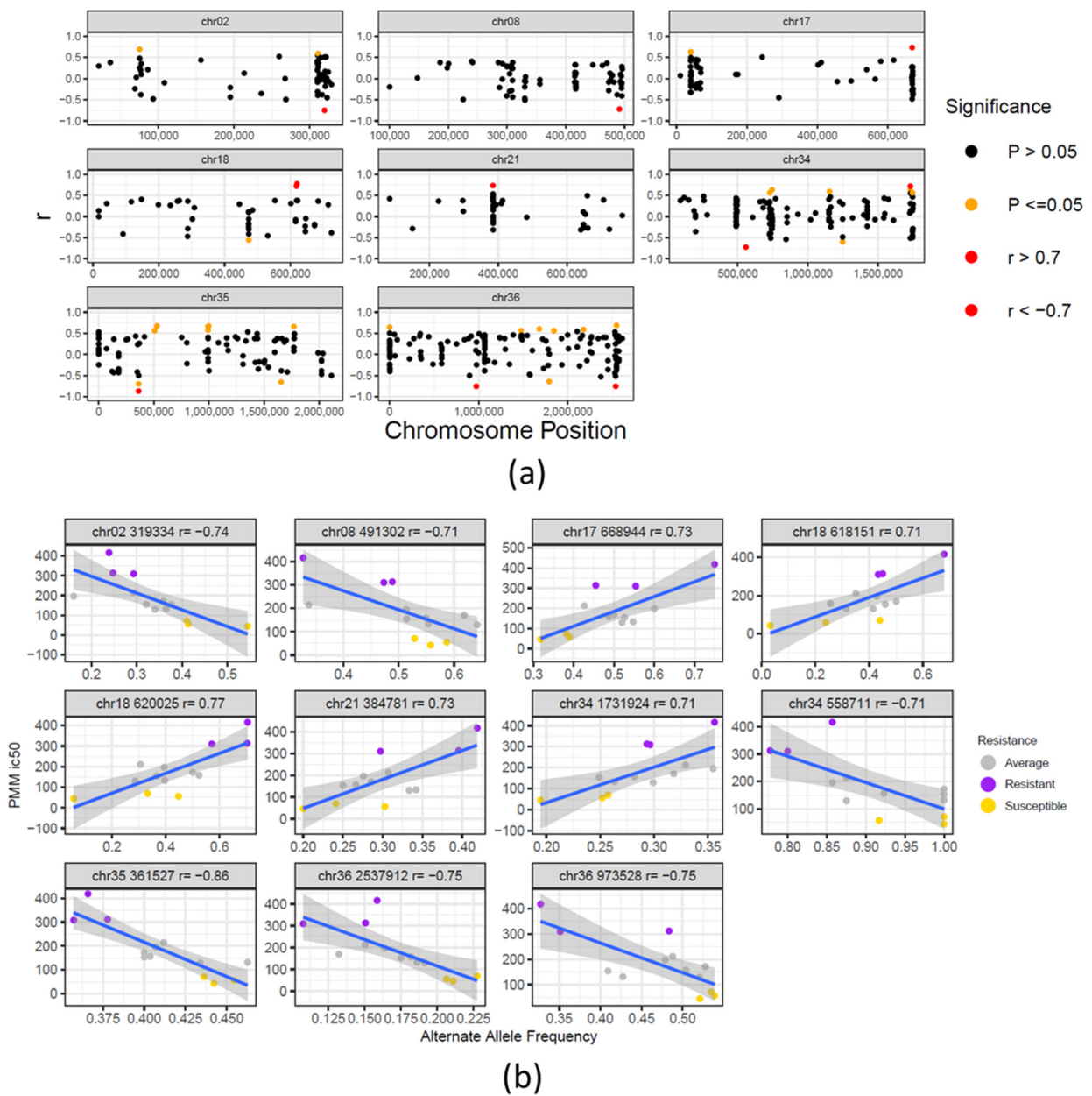
Of the 36 *L. donovani* chromosomes, two had significant correlations between chromosome expansion and PMM resistance, Chr33 ( $r = 0.64$ ,  $p$ -value = 0.02) and Chr34 ( $r = 0.56$ ,  $p$ -value = 0.04) (Supplementary Figure S4). However, the correlation,  $r$ , was lower than 0.7 and the amplitude of variation in these chromosome copies was low (Chr33, minimum = 1.29, maximum = 1.39; Chr34, minimum = 0.89, maximum = 0.94). Within their complex pattern of CCNV, the “chromosomal copy number drift” that could be observed for all of the clones (Supplementary Figure S5) might be potentially explained by adaptation to in vitro culture [26,27].



**Figure 2.** SNVs alternate allele frequency variability. Alternate allele frequency of each SNV position in the *L. donovani* clones and preselection population. (a) SNVs ordered by chromosome position. The columns and lines correspond respectively to SNV positions and the various *L. donovani* clones. The allele frequency of the alternate allele is represented in a scale from blue (low) to red (high). The dendrogram on the right represents the UPGMA clustering of the Manhattan distance of the alternate allele frequencies. The color strip beside the dendrogram represents the PMM resistance phenotype, where  $RI < 2$ ,  $2 > RI > 5$  and  $RI > 5$  are represented respectively, in yellow, grey and purple. The order of the isolates, from top to bottom, is: “preselection”, “CL 12”, “CL 1”, “CL 8”, “CL 13”, “CL 2”, “CL 14”, “CL 5”, “CL 7”, “CL 6”, “CL 4”, “CL 9” and “CL 13”. The alternating light/dark green color strip on the top represents the chromosomes 1–36. (b) The SNVs columns were reordered by UPGMA clustering of the Manhattan distance, instead of being ordered by chromosome position. (c) Genome-wide density plot of the alternate allele frequency distribution of SNVs in the 12 clones and the preselection population. The X and Y axis represent, respectively, the alternate allele frequency (from 0 to 1) and the allele frequency rate. The red dashed line represents an alternate allele frequency of 0.5, the expected value for disomic chromosomes. The observed distribution is suggestive of triploidy. (d) Median genome-wide allele frequency for each clone and the preselection population (Pre).

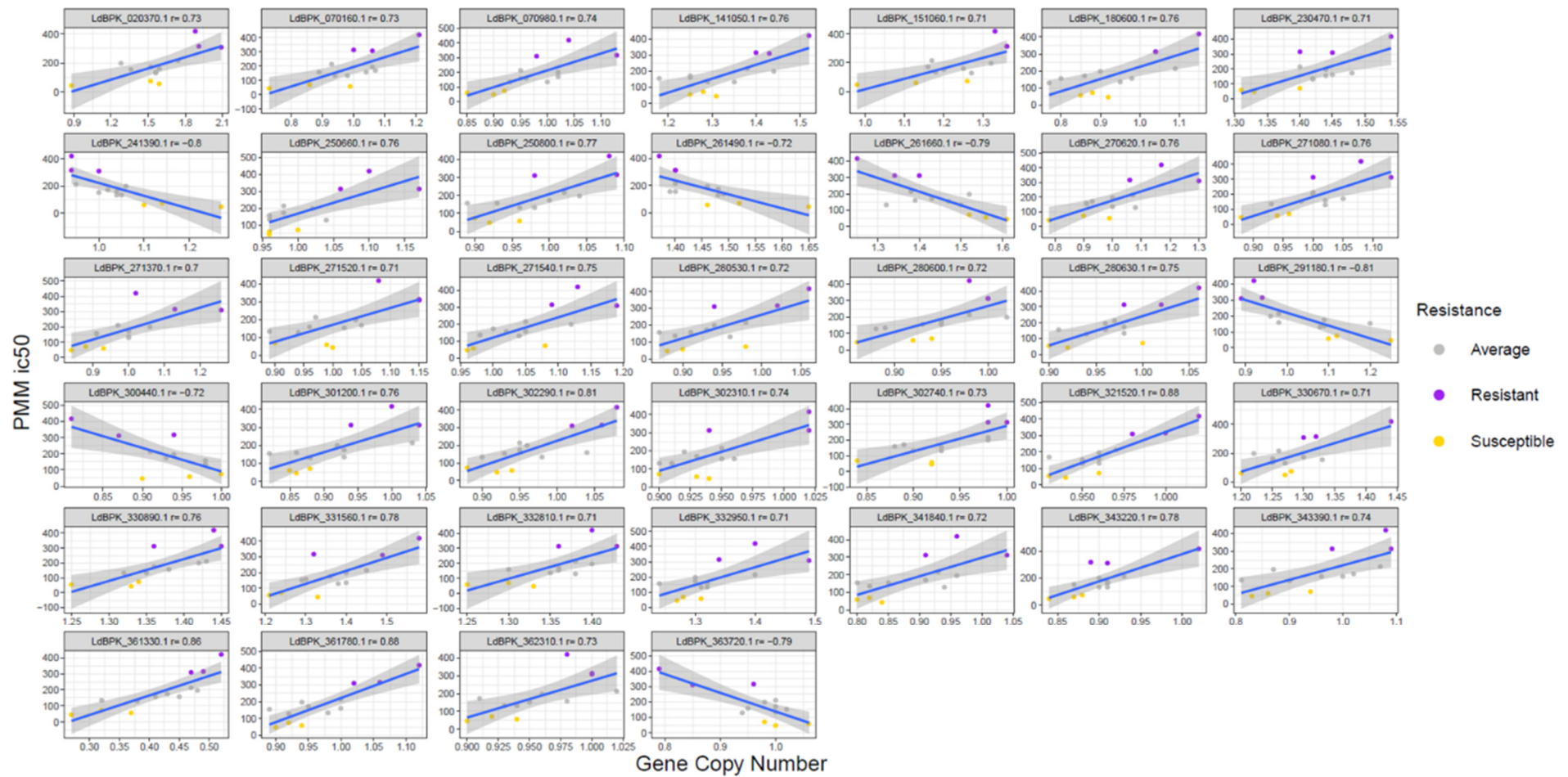
### 3.4. Gene Copy Number Variations (CNV)

A significant correlation could be noted between PMM resistance and an increased or decreased gene copy number of 33 and 6 genes, respectively (Figure 4, Supplementary Figures S3 and S6). The genes with the highest correlation to PMM resistance are summarized in Table 2. The gene with the largest difference between the maximum and minimum gene copy values is a small hypothetical protein (LdBPK\_020370.1), with no identifiable functional motifs. Although 14 genes are hypothetical genes, the other 25 are putatively enrolled in several functions, such as: transcription, translation and protein turn-over (*transcription elongation factor-like protein*, *RNA-binding protein*, *ribosomal protein L1a*, *60S ribosomal protein L6*, *eukaryotic translation initiation factor 4E-1*, *proteasome regulatory non-ATP-ase subunit 3* and *RING-H2 zinc finger*, with possible involvement in protein ubiquitination), virulence (*major surface protease gp63*, *protein-tyrosine phosphatase 1-like protein*), mitochondrial function (*ADP/ATP mitochondrial carrier-like protein*), signaling (*phosphatidylinositol 3-related kinase*, *protein kinase putative* and *protein-tyrosine phosphatase 1-like protein*) and vesicular trafficking (*ras-related protein RAB1*).



**Figure 3.** Correlation between SNVs and PMM resistance: **(a)** Chromosomal distribution and correlation of SNV allele frequency and PMM resistance. The X and Y axis correspond, respectively, to the chromosome position of each SNV and its correlation to the PMM resistance phenotype. Significant correlations are represented by orange dots. SNVs with strong significant positive or negative correlations (correlation coefficients  $r \geq 0.7$  and  $r \leq -0.7$ ) are represented by red dots. **(b)** Pearson correlation plots of the 11 significant SNVs with strong correlation to PMM resistance. The box title contains the SNV chromosome, position and correlation,  $r$ . The color of the dots reflects the level of resistance of the individual clones to PMM, where yellow, grey and purple correspond respectively to  $RI < 2$ ,  $2 < RI < 5$  and  $RI > 5$ .





**Figure 4.** Correlation between gene CNVs and PMM resistance. Pearson correlation plots of the 39 significant genes with strong correlations to PMM resistance. The title for each box contains the TriTrypDB gene ID and r correlation. The color of the dots reflects the clone's resistance to PMM, where yellow, grey and purple correspond respectively to  $RI < 2$ ,  $2 < RI < 5$  and  $RI > 5$ .

**Table 2.** Genes potentially associated with PMM resistance. Correlation between gene copy number and PMM resistance. Only genes for which the correlation,  $r$ , was  $\geq 0.7$  or  $\leq -0.7$  and the correlation  $p$ -values were lower than 0.05 are reported. GeneID: TriTrypDB *L. donovani* gene ID; Chr: chromosome number; Pos 1: gene initial coordinate; Pos 2: gene final coordinate; Correlation: Gene CN and PMM resistance correlation;  $p$ : Correlation  $p$ -value; Max: Maximum gene CN in all clone/population; Min: Minimum gene CN in all clone/population; Max–Min: the difference between the Max and Min gene CNV values.

Gene ID	Chr	Pos1	Pos2	Gene Annotation	Correlation	$p$	Max	Min	Max – Min
LdBPK_020370.1	chr02	171561	171713	hypothetical protein unknown function	0.73	$4.96 \times 10^{-3}$	2.09	0.88	1.21
LdBPK_070160.1	chr07	67067	67567	hypothetical protein conserved	0.73	$4.54 \times 10^{-3}$	1.21	0.73	0.48
LdBPK_070980.1	chr07	404916	406232	hypothetical protein conserved	0.74	$3.96 \times 10^{-3}$	1.13	0.85	0.28
LdBPK_141050.1	chr14	424294	425424	ADP/ATP mitochondrial carrier-like protein	0.76	$2.45 \times 10^{-3}$	1.52	1.18	0.34
LdBPK_180600.1	chr18	242208	242483	hypothetical protein	0.76	$2.47 \times 10^{-3}$	1.15	0.77	0.38
LdBPK_230470.1	chr23	162446	163672	aldose 1-epimerase-like protein	0.71	$6.97 \times 10^{-3}$	1.54	1.31	0.23
LdBPK_250660.1	chr25	217458	219455	predicted zinc finger protein	0.76	$2.84 \times 10^{-3}$	1.17	0.96	0.21
LdBPK_250800.1	chr25	276286	277551	hypothetical protein unknown function	0.77	$2.10 \times 10^{-3}$	1.09	0.89	0.2
LdBPK_270620.1	chr27	239023	239625	ras-related protein RAB1A putative	0.76	$2.58 \times 10^{-3}$	1.3	0.78	0.52
LdBPK_271080.1	chr27	441116	442363	RING-H2 zinc finger putative	0.76	$2.47 \times 10^{-3}$	1.13	0.88	0.25
LdBPK_271370.1	chr27	539921	540925	proteasome regulatory non-ATP-ase subunit 3 putative	0.70	$7.57 \times 10^{-3}$	1.26	0.84	0.42
LdBPK_271520.1	chr27	591692	592333	Eukaryotic translation initiation factor 4E–1	0.71	$6.85 \times 10^{-3}$	1.15	0.89	0.26
LdBPK_271540.1	chr27	607146	609893	BRO1-like domain/ALIX V-shaped domain binding to HIV putative	0.75	$3.40 \times 10^{-3}$	1.19	0.96	0.23
LdBPK_280530.1	chr28	180433	182571	TPR repeat putative	0.72	$5.12 \times 10^{-3}$	1.06	0.87	0.19
LdBPK_280600.1	chr28	209904	211604	major surface protease gp63 putative	0.72	$5.67 \times 10^{-3}$	1.02	0.86	0.16
LdBPK_280630.1	chr28	222510	224015	hypothetical protein unknown function	0.75	$3.31 \times 10^{-3}$	1.06	0.9	0.16
LdBPK_301200.1	chr30	387893	388444	hypothetical protein conserved	0.76	$2.82 \times 10^{-3}$	1.04	0.82	0.22
LdBPK_302290.1	chr30	855859	857973	tubulin-tyrosine ligase-like protein	0.81	$8.65 \times 10^{-4}$	1.08	0.88	0.2
LdBPK_302310.1	chr30	864017	867931	hypothetical protein conserved	0.74	$3.75 \times 10^{-3}$	1.02	0.9	0.12
LdBPK_302740.1	chr30	1031040	1032266	TPR domain protein conserved	0.73	$4.95 \times 10^{-3}$	1	0.84	0.16
LdBPK_321520.1	chr32	572415	582050	phosphatidylinositol 3-related kinase putative	0.88	$7.93 \times 10^{-5}$	1.02	0.93	0.09
LdBPK_330670.1	chr33	209670	210923	intraflagellar transport protein 57/55 putative	0.71	$6.32 \times 10^{-3}$	1.44	1.2	0.24
LdBPK_330890.1	chr33	292053	294803	hypothetical protein unknown function	0.76	$2.47 \times 10^{-3}$	1.45	1.25	0.2
LdBPK_151060.1	chr33	429431	429940	60S ribosomal protein L6 putative	0.71	$6.78 \times 10^{-3}$	1.36	0.98	0.38
LdBPK_331560.1	chr33	594808	595194	RNA-binding protein putative	0.78	$1.70 \times 10^{-3}$	1.58	1.21	0.37
LdBPK_332810.1	chr33	1086018	1089704	hypothetical protein conserved	0.71	$7.02 \times 10^{-3}$	1.43	1.25	0.18
LdBPK_332950.1	chr33	1165769	1167190	transcription elongation factor-like protein	0.71	$6.23 \times 10^{-3}$	1.49	1.24	0.25
LdBPK_341840.1	chr34	802817	803974	protein kinase putative	0.72	$5.11 \times 10^{-3}$	1.04	0.8	0.24
LdBPK_343220.1	chr34	1362570	1364477	DNA topoisomerase IB large subunit	0.78	$1.48 \times 10^{-3}$	1.02	0.84	0.18
LdBPK_343390.1	chr34	1417106	1417627	Complex 1 protein (LYR family) putative	0.74	$4.04 \times 10^{-3}$	1.09	0.81	0.28
LdBPK_361330.1	chr36	475562	475984	hypothetical protein (fragment)	0.86	$1.79 \times 10^{-4}$	0.52	0.27	0.25
LdBPK_361780.1	chr36	673858	675498	hypothetical protein conserved	0.88	$8.22 \times 10^{-5}$	1.12	0.89	0.23
LdBPK_362310.1	chr36	878592	880163	protein-tyrosine phosphatase 1-like protein	0.73	$4.69 \times 10^{-3}$	1.02	0.9	0.12
LdBPK_241390.1	chr24	496214	498880	hypothetical protein conserved	–0.80	$1.13 \times 10^{-3}$	1.27	0.94	0.33
LdBPK_261490.1	chr26	541997	546778	hypothetical protein unknown function	–0.72	$5.61 \times 10^{-3}$	1.65	1.37	0.28
LdBPK_261660.1	chr26	599794	600579	hypothetical protein conserved	–0.79	$1.19 \times 10^{-3}$	1.61	1.25	0.36
LdBPK_291180.1	chr29	429699	429965	ribosomal protein L1 putative (fragment)	–0.81	$7.78 \times 10^{-4}$	1.25	0.89	0.36
LdBPK_300440.1	chr30	142693	144375	quiescin sulphydryl oxidase putative	–0.72	$5.96 \times 10^{-3}$	1	0.81	0.19
LdBPK_363720.1	chr36	1394227	1395405	phytoene synthase putative	–0.79	$1.33 \times 10^{-3}$	1.06	0.79	0.27

#### 4. Discussion

Although PMM resistance mechanisms are well-established for bacteria [28,29], several hypotheses have been postulated for *Leishmania*, such as interference with ribosomal protein synthesis and inhibition of respiration [11,30–35]. However, no genetic resistance markers have been identified as yet. To try to identify these markers, the present study performed whole genome sequencing and comparison of 12 amastigote-selected clones and the pre-selection population, that had a large range of PMM resistances (Table 1). Consistent with previous analyses, we were not able to identify a specific genetic change that unequivocally explains PMM resistance. While the 12 post-selection clones contained numerous new SNV mutations that were fixed in all post-selection clones, these common mutations cannot explain the large variation in PMM resistance within these clones. As clone IC<sub>50</sub> values range from 57 µM (only marginally greater than the pre-selection strain at 45 µM) to 417 µM, we hypothesized that multiple other non-fixed genetic differences contribute to PMM resistance. To determine which of these genetic differences may be associated with resistance, we compared within-clone allele frequencies, gene CNV and chromosome CNV with PMM resistance, using a similar approach to the genome-wide association study (GWAS) approach.

The majority of the SNV positions whose within-clone allele frequency correlated with PMM resistance were observed in intergenic regions, including notably two upstream of the *chaperone DnaJ* protein and *aspartate aminotransferase* genes. Aspartate aminotransferase has been described to be significantly elevated in patients receiving PMM, indicating hepatotoxicity or another drug effect [36]. Further, only two synonymous SNPs were identified within genes, in *HSP78* and *sterol 24-c-methyltransferase*. Although synonymous mutations are often not phenotypically relevant, they may affect translation by differences in codon usage. Both affected genes are of potential relevance to PMM resistance, as the *HSP78* gene in *L. donovani* is an important virulence factor, needed to suppress immune activation and escape from NO-mediated toxicity in macrophages [37], whereas *sterol 24-c-methyltransferase* in *L. major* has been linked to mitochondrial function and virulence [38]. For both genes, a negative correlation was found between the alternate allele frequency and PMM resistance. The lower relative synonymous codon usage of the alternate codon in the *HSP78* gene (RSCU decrease from 1.439 to 1.115 for UCG → UCC) would indicate a higher expression to be linked to PMM resistance. A negative correlation was also found for *sterol 24-c-methyltransferase* alternate allele frequency and the PMM IC<sub>50</sub> values. The reduced frequency of the alternate codon (codon UUC → UUU, RSCU decrease from 1.28 to 0.72) is anticipated to decrease the expression levels in favor of increased resistance. Genomic instability of *sterol 24-c-methyltransferase* has already been associated with amphotericin B resistance in *L. mexicana*, *L. major*, *L. donovani* and *L. infantum* [39,40]. In this study, however, no correlation could be demonstrated between the PMM resistance profiles of the different clones and their susceptibility towards amphotericin B. In a study with promastigote-selected PMM-resistant lines, no differential expression of *sterol 24-c-methyltransferase* was noted [40], but it should be mentioned that in these strains, PMM susceptibility of the amastigote stage remained unaltered [12,41], whereas selection on the amastigote level triggers a completely different outcome [9].

Despite stability of the PMM resistance upon parasite passage in mice or sand flies [9,42], suggesting a stable genomic modification, this comparison mostly identified gene CNVs correlating with resistance. Chromosomal copy changes could not be unequivocally correlated to the variable PMM susceptibility of the different clones. Due to the extremely high genome plasticity of *Leishmania*, copy changes should be cautiously interpreted, as they are readily affected by culture conditions, prolonged cultivation and the associated virulence changes [43]. Nonetheless, the CNV of 39 genes was found to be statistically associated with PMM resistance, where 33 were a result of gene expansions and 6 of gene losses. While 14 of these code for hypothetical proteins, the other 25 are known to be involved in transcription, translation and protein turn-over, virulence, mitochondrial function, signaling and vesicular trafficking. Although the exact mechanisms of action

of PMM in *Leishmania* are yet to be elucidated, past research on experimentally selected resistant *L. donovani* already suggested that PMM not only impairs protein synthesis and modifies membrane fluidity and permeability, but also causes respiratory dysfunction with associated alterations of the mitochondrial membrane potential [11,32,35,40,44–46].

When only considering those genes with a copy number difference amplitude of at least 0.3 haploid genome copies, 11 genes could be identified, of which 6 have been annotated (i.e., *ADP/ATP mitochondrial carrier-like protein*, *ras-related protein RAB1*, *60S ribosomal protein L6*, *proteasome regulatory non-ATP-ase subunit 3*, *an RNA-binding protein* and *ribosomal protein L1a*). ADP/ATP mitochondrial carrier-like proteins are known to transfer molecules across mitochondrial membranes [47] and could therefore potentially play a role in drug transport into a main target organelle. The Ras-related protein RAB1 is involved in vesicular trafficking and is a known regulator of secretory pathways of several important *Leishmania* virulence factors, including gp63 and acid phosphatase [48]. Proteasome regulatory non-ATP-ase subunit 3 is important in the regulation of proteasomal functions, of which inhibition hampers specific stages of morphological differentiation in various protozoan parasites, including *Leishmania* [49]. In *L. infantum*, proteasomal functions were shown to be essential for replication and intracellular survival of amastigotes in the host cell [50]. Its upregulation upon PMM selection thus supports the increased intracellular parasite fitness observed by our group and others [12,43,51]. The increased virulence may also relate to the detected CNVs for the virulence genes *major surface protease gp63* and *protein-tyrosine phosphatase 1-like protein* [52]. The identification of the *ribosomal protein L6* gene is also noteworthy as it has been shown to be involved in bacterial resistance against aminoglycosides in the past [53]. Moreover, its close homologue, the *60s ribosomal protein L23*, is known to be overexpressed in antimony-resistant parasites [54]. Additionally, *RNA-binding protein* overexpression has already been described in antimony-resistant strains [55], and could be linked to an increased parasite replication efficacy [56]. A negative correlation was found for the *ribosomal protein L1a* and *quiescin sulphydryl oxidase*. Although not much information can be found in the literature on the role of both gene products in antileishmanial drug resistance, quiescin sulphydryl oxidase has been associated with the induction of reduced cell proliferation and quiescence, for example in fibroblasts [57,58]. Its decreased expression may increase cell proliferation, which in theory fits the increased parasite fitness observed for PMM-resistant parasites [12]. Finally, the presence of several hypothetical proteins in which gene copy number alteration was potentially associated with PMM resistance reinforces the importance of characterizing unknown protein functions in *Leishmania*.

Other research groups have evaluated PMM resistance markers using genomic, metabolomic or transcriptomic comparisons [43,44,59]. Metabolic and lipidomic changes were shown to be strain-specific [43], and up until now, no suitable PMM resistance biomarkers have been identified. None of the post-selection variants that we found to be associated with PMM resistance were previously identified by earlier research as associated with *Leishmania*'s PMM resistance. However, this is not completely unexpected as the present study was the only one to have selected PMM resistance directly on intracellular amastigotes. Our results indicate the likely multifactorial nature of PMM resistance, which complicates the identification of a single genetic marker for application in clinical settings. In-depth research and validation of the identified genetic variations in a range of clinical isolates will be necessary to understand their biological importance and use as potential resistance markers.

**Supplementary Materials:** The following are available online at <https://www.mdpi.com/article/10.3390/microorganisms9081546/s1>, Figure S1: Genetic diversity ( $\pi$ ) in the 36 *L. donovani* chromosomes, Figure S2: Correlation between SNVs and PMM resistance in all *L. donovani* chromosomes, Figure S3: QQ plot of the genome variations association with phenotypes, Figure S4: Correlation between CCNVs from Chr33 and Chr34 and PMM resistance, Figure S5: CCNV among the *L. donovani* isolates, Figure S6: Correlation between Gene CNVs and PMM resistance in all *L. donovani* chromosomes,

Table S1: WGS read libraries and SNV counts in the 12 clones and the polyclonal original population (Pre S57), Table S2: SNV correlated to PMM resistance.

**Author Contributions:** Conceptualization, S.H., J.L.R.-C., D.C.J. and G.C.; methodology, S.H., J.L.R.-C., D.C.J. and G.C.; software, J.L.R.-C. and D.C.J.; validation, J.L.R.-C. and D.C.J.; formal analysis, S.H., J.L.R.-C., D.C.J. and G.C.; investigation, S.H., J.L.R.-C. and S.F.; resources, D.C.J. and G.C.; data curation, J.L.R.-C.; writing—original draft preparation, S.H.; writing—review and editing, S.H., J.L.R.-C., D.C.J. and G.C.; visualization, D.C.J. and G.C.; supervision, D.C.J. and G.C.; project administration, S.H. and G.C.; funding acquisition, S.H. and G.C. All authors have read and agreed to the published version of the manuscript.

**Funding:** This work was funded by the Fonds Wetenschappelijk Onderzoek Vlaanderen (FWO: projects G051812N and 12I0317N), and research funds of the University of Antwerp (TT-ZAPBOF 33049 and TOP-BOF 35017). Sarah Forrester was supported by a Wellcome Seed Award in Science to Daniel Jeffares (208965/Z/17/Z). LMPH is a partner of the Excellence Centre ‘Infla-Med’ ([www.uantwerpen.be/infla-med](http://www.uantwerpen.be/infla-med)); accessed on 19 July 2021).

**Data Availability Statement:** Short-read data has been submitted to the National Center for Biotechnology Information (NCBI) (BioProject: PRJNA739251). SRA records will be accessible at <https://www.ncbi.nlm.nih.gov/sra/PRJNA739251>. All other data is available at Figshare ([https://figshare.com/authors/Daniel\\_Jeffares/649018](https://figshare.com/authors/Daniel_Jeffares/649018)); access on 19 July 2021).

**Acknowledgments:** The authors acknowledge Jean-Claude Dujardin (ITM, Antwerp, Belgium) for providing the BPK275/0-cl18 clinical isolate.

**Conflicts of Interest:** The authors declare no conflict of interest.

## References

- Maslov, D.A.; Opperdoes, F.R.; Kostygov, A.Y.; Hashimi, H.; Lukeš, J.; Yurchenko, V. Recent advances in trypanosomatid research: Genome organization, expression, metabolism, taxonomy and evolution. *Parasitology* **2018**, *146*, 1–27. [[CrossRef](#)] [[PubMed](#)]
- Musa, A.M.; Younis, B.; Fadlalla, A.; Royce, C.; Balasegaram, M.; Wasunna, M.; Hailu, A.; Edwards, T.; Omollo, R.; Mudawi, M.; et al. Paromomycin for the treatment of visceral leishmaniasis in Sudan: A randomized, open-label, dose-finding study. *PLoS Negl. Trop. Dis.* **2010**, *4*, e855. [[CrossRef](#)] [[PubMed](#)]
- Hailu, A.; Musa, A.; Wasunna, M.; Balasegaram, M.; Yifru, S.; Mengistu, G.; Hurissa, Z.; Hailu, W.; Weldegebreal, T.; Tesfaye, S.; et al. Geographical variation in the response of visceral leishmaniasis to paromomycin in East Africa: A multi-centre, open-label, randomized trial. *PLoS Negl. Trop. Dis.* **2010**, *4*, e709. [[CrossRef](#)]
- van Griensven, J.; Balasegaram, M.; Meheus, F.; Alvar, J.; Lynen, L.; Boelaert, M. Combination therapy for visceral leishmaniasis. *Lancet Infect. Dis.* **2010**, *10*, 184–194. [[CrossRef](#)]
- el-On, J.; Bazarsky, E.; Sneir, R. *Leishmania major*: In vitro and in vivo anti-leishmanial activity of paromomycin ointment (Leshcutan) combined with the immunomodulator Imiquimod. *Exp. Parasitol.* **2007**, *116*, 156–162. [[CrossRef](#)]
- Scott, J.A.; Davidson, R.N.; Moody, A.H.; Grant, H.R.; Felmingham, D.; Scott, G.M.; Olliaro, P.; Bryceson, A.D. Aminosidine (paromomycin) in the treatment of leishmaniasis imported into the United Kingdom. *Trans. R. Soc. Trop. Med. Hyg.* **1992**, *86*, 617–619. [[CrossRef](#)]
- Wiwanitkit, V. Interest in paromomycin for the treatment of visceral leishmaniasis (kala-azar). *Clin. Risk Manag.* **2012**, *8*, 323–328. [[CrossRef](#)] [[PubMed](#)]
- Hendrickx, S.; Boulet, G.; Mondelaers, A.; Dujardin, J.C.; Rijal, S.; Lachaud, L.; Cos, P.; Delputte, P.; Maes, L. Experimental selection of paromomycin and miltefosine resistance in intracellular amastigotes of *Leishmania donovani* and *L. infantum*. *Parasitol. Res.* **2014**, *113*, 1875–1881. [[CrossRef](#)]
- Hendrickx, S.; Inocencio da Luz, R.A.; Bhandari, V.; Kuypers, K.; Shaw, C.D.; Lonchamp, J.; Salotra, P.; Carter, K.; Sundar, S.; Rijal, S.; et al. Experimental induction of paromomycin resistance in antimony-resistant strains of *L. donovani*: Outcome dependent on in vitro selection protocol. *PLoS Negl. Trop. Dis.* **2012**, *6*, e1664. [[CrossRef](#)] [[PubMed](#)]
- Hendrickx, S.; Mondelaers, A.; Eberhardt, E.; Delputte, P.; Cos, P.; Maes, L. In Vivo Selection of Paromomycin and Miltefosine Resistance in *Leishmania donovani* and *L. infantum* in a Syrian Hamster Model. *Antimicrob. Agents Chemother.* **2015**, *59*, 4714–4718. [[CrossRef](#)] [[PubMed](#)]
- Jhingran, A.; Chawla, B.; Saxena, S.; Barrett, M.P.; Madhubala, R. Paromomycin: Uptake and resistance in *Leishmania donovani*. *Mol. Biochem. Parasitol.* **2009**, *164*, 111–117. [[CrossRef](#)] [[PubMed](#)]
- Hendrickx, S.; Beyers, J.; Mondelaers, A.; Eberhardt, E.; Lachaud, L.; Delputte, P.; Cos, P.; Maes, L. Evidence of a drug-specific impact of experimentally selected paromomycin and miltefosine resistance on parasite fitness in *Leishmania infantum*. *J. Antimicrob. Chemother.* **2016**. [[CrossRef](#)] [[PubMed](#)]
- Li, H.; Durbin, R. Fast and accurate long-read alignment with Burrows–Wheeler transform. *Bioinformatics* **2010**, *26*, 589–595. [[CrossRef](#)] [[PubMed](#)]

14. Aslett, M.; Aurrecochea, C.; Berriman, M.; Brestelli, J.; Brunk, B.P.; Carrington, M.; Depledge, D.P.; Fischer, S.; Gajria, B.; Gao, X.; et al. TriTrypDB: A functional genomic resource for the Trypanosomatidae. *Nucleic Acids Res.* **2009**, *38*, D457–D462. [[CrossRef](#)] [[PubMed](#)]
15. Quinlan, A.R.; Hall, I.M. BEDTools: A flexible suite of utilities for comparing genomic features. *Bioinformatics* **2010**, *26*, 841–842. [[CrossRef](#)]
16. Garrison, E.; Marth, G. Haplotype-Based Variant Detection from Short-Read Sequencing. Available online: <https://arxiv.org/pdf/1207.3907.pdf> (accessed on 19 July 2021).
17. Danecek, P.; Auton, A.; Abecasis, G.; Albers, C.A.; Banks, E.; DePristo, M.A.; Handsaker, R.E.; Lunter, G.; Marth, G.T.; Sherry, S.T.; et al. The variant call format and VCFtools. *Bioinformatics* **2011**, *27*, 2156–2158. [[CrossRef](#)]
18. Li, H. A statistical framework for SNP calling, mutation discovery, association mapping and population genetical parameter estimation from sequencing data. *Bioinformatics* **2011**, *27*, 2987–2993. [[CrossRef](#)]
19. Reis-Cunha, J.L.; Baptista, R.P.; Rodrigues-Luiz, G.F.; Coqueiro-dos-Santos, A.; Valdivia, H.O.; de Almeida, L.V.; Cardoso, M.S.; D’Ávila, D.A.; Dias, F.H.C.; Fujiwara, R.T.; et al. Whole genome sequencing of *Trypanosoma cruzi* field isolates reveals extensive genomic variability and complex aneuploidy patterns within TcII DTU. *BMC Genom.* **2018**, *19*, 816. [[CrossRef](#)]
20. Li, H.; Handsaker, B.; Wysoker, A.; Fennell, T.; Ruan, J.; Homer, N.; Marth, G.; Abecasis, G.; Durbin, R.; Subgroup, G.P.D.P. The Sequence Alignment/Map format and SAMtools. *Bioinformatics* **2009**, *25*, 2078–2079. [[CrossRef](#)]
21. Team, R.C. R: *A Language and Environment for Statistical Computing*; R Foundation for Statistical Computing: Vienna, Austria, 2019; Available online: <https://www.R-project.org/> (accessed on 19 July 2021).
22. Wickham, H. *Ggplot2*, 2nd ed.; Springer: Cham, Switzerland, 2016.
23. Dumetz, F.; Imamura, H.; Sanders, M.; Seblova, V.; Myskova, J.; Pescher, P.; Vanaerschot, M.; Meehan, C.J.; Cuypers, B.; De Muylder, G.; et al. Modulation of Aneuploidy in *Leishmania donovani* during Adaptation to Different In Vitro and In Vivo Environments and Its Impact on Gene Expression. *mBio* **2017**, *8*, e00599-17. [[CrossRef](#)]
24. Prieto Barja, P.; Pescher, P.; Bussotti, G.; Dumetz, F.; Imamura, H.; Kedra, D.; Domagalska, M.; Chaumeau, V.; Himmelbauer, H.; Pages, M.; et al. Haplotype selection as an adaptive mechanism in the protozoan pathogen *Leishmania donovani*. *Nat. Ecol. Evol.* **2017**, *1*, 1961–1969. [[CrossRef](#)]
25. Subramanian, A.; Sarkar, R.R. Comparison of codon usage bias across *Leishmania* and Trypanosomatids to understand mRNA secondary structure, relative protein abundance and pathway functions. *Genomics* **2015**, *106*, 232–241. [[CrossRef](#)] [[PubMed](#)]
26. Sinha, R.; Das, S.; Das, S.; Shadab, M.; Chowdhury, R.; Tripathy, S.; Ali, N. Genome Plasticity in Cultured *Leishmania donovani*: Comparison of Early and Late Passages. *Front. Microbiol.* **2018**, *9*, 1279. [[CrossRef](#)] [[PubMed](#)]
27. Camacho, E.; González-de la Fuente, S.; Rastrojo, A.; Peiró-Pastor, R.; Solana, J.C.; Tabera, L.; Gamarro, F.; Carrasco-Ramiro, F.; Requena, J.M.; Aguado, B. Complete assembly of the *Leishmania donovani* (HU3 strain) genome and transcriptome annotation. *Sci. Rep.* **2019**, *9*, 6127. [[CrossRef](#)]
28. Davis, B.D. Mechanism of bactericidal action of aminoglycosides. *Microbiol. Rev.* **1987**, *51*, 341–350. [[CrossRef](#)]
29. Davis, B.D.; Chen, L.L.; Tai, P.C. Misread protein creates membrane channels: An essential step in the bactericidal action of aminoglycosides. *Proc. Natl. Acad. Sci. USA* **1986**, *83*, 6164–6168. [[CrossRef](#)]
30. Fong, D.; Chan, M.M.; Rodriguez, R.; Gately, L.J.; Berman, J.D.; Grogil, M. Paromomycin resistance in *Leishmania tropica*: Lack of correlation with mutation in the small subunit ribosomal RNA gene. *Am. J. Trop. Med. Hyg.* **1994**, *51*, 758–766. [[CrossRef](#)] [[PubMed](#)]
31. Maarouf, M.; Adeline, M.T.; Solognac, M.; Vautrin, D.; Robert-Gero, M. Development and characterization of paromomycin-resistant *Leishmania donovani* promastigotes. *Parasite* **1998**, *5*, 167–173. [[CrossRef](#)]
32. Maarouf, M.; de Kouchkovsky, Y.; Brown, S.; Petit, P.X.; Robert-Gero, M. In vivo interference of paromomycin with mitochondrial activity of *Leishmania*. *Exp. Cell Res.* **1997**, *232*, 339–348. [[CrossRef](#)]
33. Hobbie, S.N.; Kaiser, M.; Schmidt, S.; Shcherbakov, D.; Janusic, T.; Brun, R.; Bottger, E.C. Genetic Reconstruction of Protozoan rRNA Decoding Sites Provides a Rationale for Paromomycin Activity against *Leishmania* and *Trypanosoma*. *PLoS Negl. Trop. Dis.* **2011**, *5*, e1161. [[CrossRef](#)]
34. Horvath, A.; Nebohacova, M.; Lukes, J.; Maslov, D.A. Unusual polypeptide synthesis in the kinetoplast-mitochondria from *Leishmania tarentolae*. Identification of individual de novo translation products. *J. Biol. Chem.* **2002**, *277*, 7222–7230. [[CrossRef](#)]
35. Chawla, B.; Jhingran, A.; Panigrahi, A.; Stuart, K.D.; Madhubala, R. Paromomycin affects translation and vesicle-mediated trafficking as revealed by proteomics of paromomycin -susceptible -resistant *Leishmania donovani*. *PLoS ONE* **2011**, *6*, e26660. [[CrossRef](#)]
36. Sundar, S.; Jha, T.K.; Thakur, C.P.; Sinha, P.K.; Bhattacharya, S.K. Injectable paromomycin for Visceral leishmaniasis in India. *N. Engl. J. Med.* **2007**, *356*, 2571–2581. [[CrossRef](#)]
37. Das, S.; Banerjee, A.; Kamran, M.; Ejazi, S.A.; Asad, M.; Ali, N.; Chakrabarti, S. A chemical inhibitor of heat shock protein 78 (HSP78) from *Leishmania donovani* represents a potential antileishmanial drug candidate. *J. Biol. Chem.* **2020**, *295*, 9934–9947. [[CrossRef](#)]
38. Mukherjee, S.; Xu, W.; Hsu, F.F.; Patel, J.; Huang, J.; Zhang, K. Sterol methyltransferase is required for optimal mitochondrial function and virulence in *Leishmania major*. *Mol. Microbiol.* **2019**, *111*, 65–81. [[CrossRef](#)] [[PubMed](#)]

39. Pountain, A.W.; Weidt, S.K.; Regnault, C.; Bates, P.A.; Donachie, A.M.; Dickens, N.J.; Barrett, M.P. Genomic instability at the locus of sterol C24-methyltransferase promotes amphotericin B resistance in *Leishmania* parasites. *PLoS Negl. Trop. Dis.* **2019**, *13*, e0007052. [[CrossRef](#)] [[PubMed](#)]
40. Rastrojo, A.; García-Hernández, R.; Vargas, P.; Camacho, E.; Corvo, L.; Imamura, H.; Dujardin, J.C.; Castanys, S.; Aguado, B.; Gamarro, F.; et al. Genomic and transcriptomic alterations in *Leishmania donovani* lines experimentally resistant to antileishmanial drugs. *Int. J. Parasitology. Drugs Drug Resist.* **2018**, *8*, 246–264. [[CrossRef](#)]
41. Hendrickx, S.; Leemans, A.; Mondelaers, A.; Rijal, S.; Khanal, B.; Dujardin, J.C.; Delputte, P.; Cos, P.; Maes, L. Comparative Fitness of a Parent *Leishmania donovani* Clinical Isolate and Its Experimentally Derived Paromomycin-Resistant Strain. *PLoS ONE* **2015**, *10*, e0140139. [[CrossRef](#)] [[PubMed](#)]
42. Hendrickx, S.; Van Bockstal, L.; Aslan, H.; Sadlova, J.; Maes, L.; Volf, P.; Caljon, G. Transmission potential of paromomycin-resistant *Leishmania infantum* and *Leishmania donovani*. *J. Antimicrob. Chemother.* **2019**. [[CrossRef](#)] [[PubMed](#)]
43. Silva-Jardim, I.; Horta, M.F.; Ramalho-Pinto, F.J. The *Leishmania chagasi* proteasome: Role in promastigotes growth and amastigotes survival within murine macrophages. *Acta Trop.* **2004**, *91*, 121–130. [[CrossRef](#)]
44. Shaw, C.D.; Imamura, H.; Downing, T.; Blackburn, G.; Westrop, G.D.; Cotton, J.A.; Berriman, M.; Sanders, M.; Rijal, S.; Coombs, G.H.; et al. Genomic and Metabolomic Polymorphism among Experimentally Selected Paromomycin-Resistant *Leishmania donovani* Strains. *Antimicrob. Agents Chemother.* **2019**, *64*. [[CrossRef](#)]
45. Maarouf, M.; Lawrence, F.; Brown, S.; Robert-Gero, M. Biochemical alterations in paromomycin-treated *Leishmania donovani* promastigotes. *Parasitol. Res.* **1997**, *83*, 198–202. [[CrossRef](#)]
46. Gazanian, É.; Fernández-Prada, C.; Papadopoulou, B.; Leprohon, P.; Ouellette, M. Cos-Seq for high-throughput identification of drug target and resistance mechanisms in the protozoan parasite *Leishmania*. *Proc. Natl. Acad. Sci. USA* **2016**, *113*, E3012–E3021. [[CrossRef](#)]
47. Wen, J.; Nowicki, C.; Blankenfeldt, W. Structural basis for the relaxed substrate selectivity of *Leishmania mexicana* broad specificity aminotransferase. *Mol. Biochem. Parasitol.* **2015**, *202*, 34–37. [[CrossRef](#)]
48. Palmieri, F. The mitochondrial transporter family SLC25: Identification, properties and physiopathology. *Mol. Asp. Med.* **2013**, *34*, 465–484. [[CrossRef](#)]
49. Bahl, S.; Parashar, S.; Malhotra, H.; Raje, M.; Mukhopadhyay, A. Functional Characterization of Monomeric GTPase Rab1 in the Secretory Pathway of *Leishmania*. *J. Biol. Chem.* **2015**, *290*, 29993–30005. [[CrossRef](#)]
50. Muñoz, C.; San Francisco, J.; Gutiérrez, B.; González, J. Role of the Ubiquitin-Proteasome Systems in the Biology and Virulence of Protozoan Parasites. *Biomed. Res. Int.* **2015**, *2015*, 141526. [[CrossRef](#)]
51. Bhandari, V.; Sundar, S.; Dujardin, J.C.; Salotra, P. Elucidation of cellular mechanisms involved in experimental paromomycin resistance in *Leishmania donovani*. *Antimicrob. Agents Chemother.* **2014**, *58*, 2580–2585. [[CrossRef](#)] [[PubMed](#)]
52. Olivier, M.; Atayde, V.D.; Isnard, A.; Hassani, K.; Shio, M.T. *Leishmania* virulence factors: Focus on the metalloprotease GP63. *Microbes. Infect* **2012**, *14*, 1377–1389. [[CrossRef](#)] [[PubMed](#)]
53. Kühberger, R.; Piepersberg, W.; Petzet, A.; Buckel, P.; Böck, A. Alteration of ribosomal protein L6 in gentamicin-resistant strains of *Escherichia coli*. Effects on fidelity of protein synthesis. *Biochemistry* **1979**, *18*, 187–193. [[CrossRef](#)] [[PubMed](#)]
54. Das, S.; Shah, P.; Baharia, R.K.; Tandon, R.; Khare, P.; Sundar, S.; Sahasrabudhe, A.A.; Siddiqi, M.I.; Dube, A. Over-expression of 60s ribosomal L23a is associated with cellular proliferation in SAG resistant clinical isolates of *Leishmania donovani*. *PLoS Negl. Trop. Dis.* **2013**, *7*, e2527. [[CrossRef](#)] [[PubMed](#)]
55. Andrade, J.M.; Gonçalves, L.O.; Liarte, D.B.; Lima, D.A.; Guimarães, F.G.; de Melo Resende, D.; Santi, A.M.M.; de Oliveira, L.M.; Velloso, J.P.L.; Delfino, R.G.; et al. Comparative transcriptomic analysis of antimony resistant and susceptible *Leishmania infantum* lines. *Parasites Vectors* **2020**, *13*, 600. [[CrossRef](#)] [[PubMed](#)]
56. De Pablos, L.M.; Ferreira, T.R.; Dowle, A.A.; Forrester, S.; Parry, E.; Newling, K.; Walrad, P.B. The mRNA-bound Proteome of *Leishmania mexicana*: Novel Genetic Insight into an Ancient Parasite. *Mol. Cell. Proteom. Mcp* **2019**, *18*, 1271–1284. [[CrossRef](#)] [[PubMed](#)]
57. Coppock, D.L.; Kopman, C.; Scandalis, S.; Gilleran, S. Preferential gene expression in quiescent human lung fibroblasts. *Cell Growth Differ. Mol. Biol. J. Am. Assoc. Cancer Res.* **1993**, *4*, 483–493.
58. Grossman, I.; Alon, A.; Ilani, T.; Fass, D. An inhibitory antibody blocks the first step in the dithiol/disulfide relay mechanism of the enzyme QSOX1. *J. Mol. Biol.* **2013**, *425*, 4366–4378. [[CrossRef](#)]
59. Verma, A.; Bhandari, V.; Deep, D.K.; Sundar, S.; Dujardin, J.C.; Singh, R.; Salotra, P. Transcriptome profiling identifies genes/pathways associated with experimental resistance to paromomycin in *Leishmania donovani*. *Int. J. Parasitol. Drugs Drug Resist.* **2017**, *7*, 370–377. [[CrossRef](#)]