



This is a repository copy of *Solving the sample size problem for resource selection functions*.

White Rose Research Online URL for this paper:
<https://eprints.whiterose.ac.uk/177281/>

Version: Accepted Version

Article:

Street, G.M., Potts, J.R. orcid.org/0000-0002-8564-2904, Börger, L. et al. (22 more authors) (2021) Solving the sample size problem for resource selection functions. *Methods in Ecology and Evolution*, 12 (12). pp. 2421-2431. ISSN 2041-210X

<https://doi.org/10.1111/2041-210x.13701>

This is the peer reviewed version of the following article: Street, G.M., Potts, J.R., Börger, L., Beasley, J.C., Demarais, S., Fryxell, J.M., McLoughlin, P.D., Monteith, K.L., Prokopenko, C.M., Ribeiro, M.C., Rodgers, A.R., Strickland, B.K., van Beest, F.M., Bernasconi, D.A., Beumer, L.T., Dharmarajan, G., Dwinell, S.P., Keiter, D.A., Keuroghlian, A., Newediuk, L.J., Oshima, J.E.F., Rhodes, O., Jr., Schlichting, P.E., Schmidt, N.M. and Vander Wal, E. (2021), Solving the Sample Size Problem for Resource Selection Functions. *Methods in Ecology and Evolution*., which has been published in final form at <https://doi.org/10.1111/2041-210X.13701>. This article may be used for non-commercial purposes in accordance with Wiley Terms and Conditions for Use of Self-Archived Versions.

Reuse

Items deposited in White Rose Research Online are protected by copyright, with all rights reserved unless indicated otherwise. They may be downloaded and/or printed for private study, or other acts as permitted by national copyright laws. The publisher or other rights holders may allow further reproduction and re-use of the full text version. This is indicated by the licence information on the White Rose Research Online record for the item.

Takedown

If you consider content in White Rose Research Online to be in breach of UK law, please notify us by emailing eprints@whiterose.ac.uk including the URL of the record and the reason for the withdrawal request.



eprints@whiterose.ac.uk
<https://eprints.whiterose.ac.uk/>

Solving the Sample Size Problem for Resource Selection Functions

Garrett M. Street^{*1,2}, Jonathan R. Potts³, Luca Börger^{4,5}, James C. Beasley⁶, Stephen Demarais¹, John M. Fryxell⁷, Philip D. McLoughlin⁸, Kevin L. Monteith⁹, Christina M. Prokopenko¹⁰, Milton C. Ribeiro¹¹, Arthur R. Rodgers¹², Bronson K. Strickland¹, Floris M. van Beest¹³, David A. Bernasconi⁶, Larissa T. Beumer¹³, Guha Dharmarajan⁶, Samantha P. Dwinnell¹⁴, David A. Keiter⁶, Alexine Keuroghlian¹⁵, Levi J. Newediuk¹⁰, Júlia Emi F. Oshima¹¹, Olin Rhodes Jr.⁶, Peter E. Schlichting⁶, Niels M. Schmidt¹³, and Eric Vander Wal¹⁰

¹Department of Wildlife, Fisheries, and Aquaculture, Mississippi State University,
Mississippi State, MS, 39762, USA

²Quantitative Ecology and Spatial Technologies Laboratory, Mississippi State
University, Mississippi State, MS, 39762, USA

³School of Mathematics and Statistics, University of Sheffield, Sheffield, S3 7RH, United
Kingdom

⁴Department of Biosciences, Swansea University, Swansea, SA2 8PP, United Kingdom

⁵Centre for Biomathematics, Swansea University, Swansea, SA2 8PP, United Kingdom

⁶Savannah River Ecology Laboratory, University of Georgia, Aiken, SC, 29802, USA

⁷Department of Integrative Biology, University of Guelph, Guelph, Ontario, N1G 2W1,
Canada

⁸Department of Biology, University of Saskatchewan, Saskatoon, Saskatchewan, S7N
5E2, Canada

⁹Haub School of Environment and Natural Resources, University of Wyoming,
Laramie, WY, 82072, USA

¹⁰Department of Biology, Memorial University of Newfoundland, St. John's,
Newfoundland, A1B 3X9, Canada

¹¹Instituto de Biosciências, Universidad Estadual Paulista, Rio Claro, São Paulo, Brazil

¹²Centre for Northern Forest Ecosystem Research, Ontario Ministry of Natural
Resources and Forestry, Thunder Bay, Ontario, P7E 6S8, Canada

¹³Department of Bioscience, Aarhus University, Aarhus, Denmark

¹⁴Wyoming Cooperative Fish and Wildlife Research Unit, University of Wyoming,
Laramie, WY, 82071, USA

¹⁵IUCN/SSC Peccary Specialist Group, Campo Grande, Brazil

Manuscript type: Standard Paper

Abstract word count: 350

Main text word count: 4904

Number of figures: 5

Number of tables: 0

*Corresponding Author (gms246@msstate.edu)

Abstract

1. Sample size sufficiency is a critical consideration for estimating Resource-Selection Functions (RSFs) from GPS-based animal telemetry. Cited thresholds for sufficiency include a number of captured animals $M \geq 30$ and as many relocations per animal N as possible. These thresholds render many RSF-based studies misleading if large sample sizes were truly insufficient, or unpublishable if small sample sizes were sufficient but failed to meet reviewer expectations.
2. We provide the first comprehensive solution for RSF sample size by deriving closed-form mathematical expressions for the number of animals M and the number of relocations per animal N required for model outputs to a given degree of precision. The sample sizes needed depend on just 3 biologically meaningful quantities: habitat selection strength, variation in individual selection, and a novel measure of landscape complexity, which we define rigorously. The mathematical expressions are calculable for any environmental dataset at any spatial scale and are applicable to any study involving resource selection (including sessile organisms). We validate our analytical solutions using globally relevant empirical data including 5,678,623 GPS locations from 511 animals from 10 species (omnivores, carnivores, and herbivores living in boreal, temperate, and tropical forests, montane woodlands, swamps, and arctic tundra).
3. Our analytic expressions show that the required M and N must decline with increasing selection strength and increasing landscape complexity, and this decline is insensitive to the definition of availability used in the analysis. Our results demonstrate that the most biologically relevant effects on the utilization distribution (i.e. those landscape conditions with the greatest absolute magnitude of resource selection) can often be estimated with much fewer than $M = 30$ animals.
4. We identify several critical steps in implementing these equations, including (i) a priori

27 selection of expected model coefficients, and (ii) regular sampling of background (pseu-
doabsence) data within a given definition of availability. We discuss possible methods to
identify a priori expectations for habitat selection coefficients, effects of scale on RSF esti-
mation, and caveats for rare species applications. We argue that these equations should be
30 a mandatory component for all future RSF studies.

Keywords: bootstrap, habitat selection, p-value, power analysis, Resource Selection Function,
sample size, Species Distribution Model, validation

33 Introduction

Resource selection analysis (RSA) is a broad framework linking the distribution of animals to their preferences for specific habitat conditions and is a fundamental tool in animal ecology (Boyce & McDonald 1999; Strickland & McDonald 2006). Obtaining sufficient locations to ascertain the distribution of animals across landscapes is a fundamental requirement for RSA. Given that individual animals will differ in the magnitude and direction of preference for different components of a landscape (McLoughlin *et al.* 2010), it is necessary to obtain repeated localizations on multiple individuals, now commonly collected using animal-attached GPS sensors (Hebblewhite & Haydon 2010). GPS data on animal movements are hence commonly employed for RSA and are often analyzed using Resource Selection Functions (RSFs; Boyce & McDonald 1999; Manly *et al.* 2002; Elith & Leathwick 2009; Hebblewhite & Haydon 2010). RSFs are a class of exponential models of space use that estimate the probability distribution of animal locations using different resources/conditions in the landscape, taking into account the availability of each resource, and thereby provide a measure of the ‘strength’ of (behavioral) selection for or against each resource (Manly *et al.* 2002). RSFs are easily fitted using standard statistical models (commonly logistic or conditional logistic regression) applied to data on animal locations and resource distributions in the landscape and have become a cornerstone of research in spatial ecology (Manly *et al.* 2002; Elith & Leathwick 2009; Renner & Warton 2013; Fieberg *et al.* 2021).

Given the prevalence of RSFs, it is surprising that the central question determining the validity of inferences obtained – how much data is needed to estimate a RSF for a given species? – has not been solved. This issue has been broached for occupancy analysis (Guillera-Arroita & Lahoz-Monfort 2012) and generalized linear mixed models (Johnson *et al.* 2015), and has been evaluated within individual RSF studies using simulations (Leban *et al.* 2001; Loe *et al.* 2012), yet no analytic expressions exist to determine the number of animals (M) and relocations per animal (N) required to obtain RSF outputs to a given degree of precision. While the accuracy and precision of RSFs generally increase with sample size, leading to a standard rule-of-thumb

of $M \geq 30$ needed for reliable ecological inference (Leban *et al.* 2001), this rough guideline is grounded in century-old thinking about statistics in the pre-computation world (James *et al.* 2013). Crucially, it is also oblivious to the ecological reality that a multitude of factors may affect selection strength and determine the required sample size (Manly *et al.* 2002; McLoughlin *et al.* 2010; Hebblewhite & Haydon 2010). These include density-dependence (i.e. certain habitats become less attractive when occupied by conspecifics; Fretwell & Lucas 1969; McLoughlin *et al.* 2010; van Beest *et al.* 2016), trade-offs in selection for forage and cover under predation risk (Fortin *et al.* 2005; McLoughlin *et al.* 2010), temporal variations in resource dynamics (McLoughlin *et al.* 2010; Paolini *et al.* 2018), or the degree of habitat availability or heterogeneity in a landscape (Mysterud & Ims 1998; McLoughlin *et al.* 2010; van Beest *et al.* 2016; Paolini *et al.* 2018). There is no consistency in RSF studies in the number of replicates used (Hebblewhite & Haydon 2010), as the only alternative approaches to establishing the number of replicates a priori are ecologically informed guesswork, or simply to collect as much data as possible.

The crux of the problem lies in the relationship between sample size and ecological complexity. It is suggested that more complex systems require more data to describe (Wisz *et al.* 2008), yet a robust power analysis (Johnson *et al.* 2015) allowing examination of the relationship between RSF estimation, system complexity, and data availability is crucially missing. This has obvious economic and ethical implications if more animals are tagged and monitored than needed and affects research aimed at the conservation of species, which requires reliable estimates of animal-habitat relationships but where it is often impossible to monitor large numbers of animals. Here, we provide a solution to the sample size problem in RSFs by deriving analytic expressions for the values of M and N (the number of animals and relocations per animal respectively) required to estimate RSFs to a required degree of accuracy, taking into account landscape complexity and the strength of selection for the resources. We validate these expressions using simulations and a large dataset of GPS-tagged animals (including 10 species from different continents and biomes) and show that the most biologically relevant effects of landscapes on animal distributions can often be estimated with far fewer animals and locations than commonly stated.

Methods

87 We begin by describing mathematically how to determine the number of locations per animal
(N) and the number of animals (M) for RSsF. Generally speaking, RSA seeks to parametrize a
model of space use that has the following form (Boyce & McDonald 1999):

$$90 \quad u(\mathbf{x}) = \frac{A(\mathbf{x})W(\mathbf{x})}{\int_{\Omega} A(\mathbf{x}')W(\mathbf{x}')d\mathbf{x}'}, \quad (1)$$

where $u(\mathbf{x})$ is the *utilization distribution* of the study species (i.e. the probability density function
93 of the study animals' locations), $A(\mathbf{x})$ is a function denoting the availability of the point \mathbf{x} to
the animals, Ω is the study area, and $W(\mathbf{x})$ is the RSF. (Note: throughout this manuscript, bold
fonts imply that the quantity is a vector.) For the purposes of our analytic calculations, our
96 RSF will be dependent upon a single resource layer $R(\mathbf{x})$. This could denote, for example, the
vegetation quality or prey availability at point \mathbf{x} . However, in general, $R(\mathbf{x})$ represents a map of
any environmental feature which is hypothesized to covary with space use. Although we only
99 look at one resource layer at a time for our analytic calculations, we show in our empirical study
(below) that the resulting formulae work when the RSF has multiple layers.

As is the standard method for RSA, we make 3 simplifying assumptions (Manly *et al.* 2002):
102 (i) our weighting function is of the form $W(\mathbf{x}|\beta) = \exp[\beta R(\mathbf{x})]$, where β is a parameter to be
estimated; (ii) the availability kernel $A(\mathbf{x})$ is a uniform distribution; and (iii) relocations are
independent. Consequently, our model of space use from Equation (1) becomes:

$$105 \quad u(\mathbf{x}|\beta) = \frac{\exp[\beta R(\mathbf{x})]}{\int_{\Omega} \exp[\beta R(\mathbf{x}')d\mathbf{x}'}. \quad (2)$$

The aim of this section is to understand how many independent samples are required to give an
108 accurate parametrization of the model in Equation (2). Note that when applying our theory to
empirical data, one will need to test that the assumption of independence between samples is
reasonable. This is a standard assumption in resource selection studies and the techniques for

111 testing independence are no different for our theory than for resource selection in general. Much
 has already been written in the literature about this independence assumption (e.g. Millspaugh
et al. 1998; Manly *et al.* 2002; Gillies *et al.* 2006) and we refer the reader there for guidance in this
 114 regard.

Locations from a Single Individual (N)

We first need to phrase the question "How many locations?" in a concrete, mathematical way.
 117 Suppose we wish to test the null hypothesis $H_0 : \beta = 0$ against the alternative $H_1 : \beta \neq 0$
 at a significance level $p \in (0, 1)$. An experiment to test this hypothesis involves measuring N
 samples and using (conditional) logistic regression to infer β and test the null hypothesis (as
 120 is the standard method for resource selection, e.g. Manly *et al.* 2002). We define $N_{\alpha,p}(\beta)$ to be
 the minimum number of samples required so that we expect to reject the null hypothesis in
 100(1 - α)% of experiments. An approximate analytical formula for $N_{\alpha,p}(\beta)$ is given as follows
 123 (derived in Supplementary Appendix A):

$$N_{\alpha,p}(\beta) \approx \frac{(z_\alpha + z_{p/2})^2}{\text{Var}[R(X_\beta)]} \beta^{-2}. \quad (3)$$

126 Here, $z_\alpha = \Phi^{-1}(1 - \alpha)$ where $\Phi(\cdot)$ is the cumulative distribution function for the standard normal
 distribution (e.g. $z_{0.05} \approx 1.645$, $z_{0.025} \approx 1.96$), X_β is a random variable whose probability density
 function is given by Equation (2), and $\text{Var}[R(X_\beta)]$ is the variance of $R(X_\beta)$. An explicit functional
 129 expression for $\text{Var}[R(X_\beta)]$ can be written as follows:

$$\text{Var}[R(X_\beta)] = \frac{\int_{\Omega} R^2(\mathbf{x}) \exp[\beta R(\mathbf{x})] \, d\mathbf{x}}{\int_{\Omega} \exp[\beta R(\mathbf{x})] \, d\mathbf{x}} - \left(\frac{\int_{\Omega} R(\mathbf{x}) \exp[\beta R(\mathbf{x})] \, d\mathbf{x}}{\int_{\Omega} \exp[\beta R(\mathbf{x})] \, d\mathbf{x}} \right)^2. \quad (4)$$

132 We call $\text{Var}[R(X_\beta)]$ "landscape complexity". Critically, this form of landscape complexity is de-
 termined in part by multiplying the landscape layer by the expected β , so it should be understood
 as representing the landscape complexity *as viewed by the animal*.

135 The formula in Equation (3) is approximate due to two assumptions: (i) it relies on the stan-
dard error, σ , of the maximum likelihood function being approximately normally distributed,
and (ii) it uses a standard result relating the standard error for the estimator of β to the sec-
138 ond derivative of the log-likelihood function (see Supplementary Appendix A for more details).
Therefore it is necessary to investigate the magnitude of these approximating assumptions using
simulated data.

141 To test how effective the approximate expression from Equation (3) is at capturing the actual
number of samples required to infer β with a given level of accuracy, we constructed a simulated
resource layer which describes an example of the function $R(\mathbf{x})$ (Fig. 1a). This test layer is
144 a Gaussian random field, previously used in the context of resource selection by Potts *et al.*
(2014). It was generated by the R function `GaussRF()` from the `RandomFields` package (Schlather
et al., 2016), using the exponential model with mean=0, variance=1, nugget=0, and scale=10, and
147 consists of $L = 100$ by $L = 100$ pixels. By sampling N times from Equation (2) for various
 N with $R(\mathbf{x})$, we can compute empirical values for $N_{\alpha,p}(\beta)$ for different β (full method given
in Supplementary Appendix B). Comparison of these empirically-derived values alongside the
150 analytical expression from Equation (3) reveals remarkably strong agreement (Fig. 1b). This
suggests that Equation (3) gives an accurate estimation of the number of independent samples
required to estimate β .

153 **Locations from multiple individuals (M)**

Now we assume that there are M individuals and they each select resources with different β .
To model this, let $\beta_1, \dots, \beta_M \sim N(\beta, s^2)$ be independent draws from a normal distribution with
156 mean β and variance s^2 . (Note that this assumes that the individuals' responses to resources are
normally distributed, which needs to be checked when applying out results to any specific study
system). Then β_i is the coefficient of resource selection for individual $i \in \{1, \dots, M\}$. Suppose for
159 each individual i we have gathered N_i locations. Let $\hat{\beta}_i$ be the maximum likelihood estimator for
 β_i . Then the standard deviation of $\hat{\beta}_i$ can be estimated as (Supplementary Appendix A, Equation

15):

$$\sigma_i = \frac{1}{\sqrt{N_i \text{Var}[R(X_{\beta_i})]}}. \quad (5)$$

If $\hat{\beta}$ is the mean of $\hat{\beta}_1, \dots, \hat{\beta}_M$, then $\hat{\beta}$ is normally distributed as follows (Supplementary Appendix C):

$$\hat{\beta} \sim N\left(\beta, \frac{1}{M^2} \sum_{i=1}^M \sigma_i^2 + \frac{s^2}{M}\right). \quad (6)$$

Thus $\hat{\beta}$ is an unbiased estimator of β . Notice that the variance decays as M increases. If the practitioner has some prior expectation of the possible values of β and s^2 , Equation (6) can be used to calculate the number of animals, M , required to obtain an empirical estimate of β to a given degree of accuracy.

As well as calculating an estimate of β , it is also possible to estimate s^2 . The following is an unbiased estimator of s^2 for $M \geq 2$ (Supplementary Appendix C):

$$\hat{s}^2 = \frac{1}{M-1} \sum_{i=1}^M \left(\hat{\beta}_i - \frac{1}{M} \sum_{j=1}^M \hat{\beta}_j \right)^2 - \frac{1}{M} \sum_{i=1}^M \sigma_i^2. \quad (7)$$

We could not derive a closed analytic formula for the uncertainty in the estimator given in Equation (7); however, we provide code for estimating this using random sampling (see Supplementary Appendix D). In general, the estimator becomes more precise for lower σ_i and higher M . This is shown in Supplementary Appendix D, where we also verify numerically Equations (6) and (7).

Equation (6) allows us to calculate the minimum number of animals, $M_{\alpha,p}(\beta)$, for which we would expect to reject the null hypothesis that $\beta = 0$, at significance level p , $100(1 - \alpha)\%$ of the time (two-tailed test). $M_{\alpha,p}(\beta)$ is the minimum integer, M , that satisfies the following inequality:

$$M \geq \frac{s^2(z_{p/2} + z_\alpha)^2 + \sqrt{s^4(z_{p/2} + z_\alpha)^4 + 4\beta^2(z_{p/2} + z_\alpha)^2 \sum_{i=1}^M \sigma_i^2}}{2\beta^2}. \quad (8)$$

186 Note that $M_{\alpha,p}(\beta)$ is a non-decreasing function of s^2 , meaning that more variation amongst individuals is likely to mean one has to sample a higher number of animals.

Data and Resource Selection Functions

189 Equations (3) and (8) give predicted values for the number of relocations N and the number of animals M required for RSF estimation. To test our analytical predictions, we compiled GPS-based relocation datasets from 10 separate species with accompanying landscape data in raster
 192 format (Table S1; Fig. 2). Landscape data were either categorical (i.e. discrete landscover) or numeric (e.g. elevation, precipitation, etc.). To ensure comparability between model outputs for each species, we centered and scaled each numeric landscape raster in R using the `scale()`
 195 function with default parameters. We converted categorical landcover rasters to binary raster layers for each landcover classification of interest (e.g. deciduous forest, croplands, etc.) to acquire estimates of $\text{Var}[R(X_\beta)]$ for a given categorical raster.

198 We generated a 1:1 sample of availability (i.e. 1 available location per animal relocation) within each animal's 99% home range as estimated using the function `kernelUD()` in R package `adehabitatHR` with the default bandwidth estimator. For each availability set, we extracted
 201 centered-and-scaled (numeric) and binary (categorical) landscape data to animal relocations and available locations and fit a RSF to each animal in each dataset using logistic regression (i.e. 511 individual models; Table S2). For simplicity, we used only linear main effects for each predictor
 204 in a given RSF; however, we emphasize that more complex effects (e.g. non-linear and interaction terms) may be identically investigated using the appropriate non-linear transformation or multiplicative product on the resource layer(s) prior to calculation. Note that, although our equations
 207 operate on a single resource layer at a time, our analysis uses RSFs with multiple layers.

This procedure thus tests whether multiple layers may be analyzed one-at-a-time to ascertain the number of animals and fixes required to estimate the β -value for each layer.

210 **Empirical Validation: M**

After fitting each RSF, we calculated the mean selection coefficient $\bar{\beta}$ for each landscape layer across individuals within a species. Assuming $\bar{\beta}$ was an accurate estimate of population-level selection β , we asked: how many animals M were necessary to estimate β ? We calculated 213 $\text{Var}[R(X_\beta)]$ for each centered-and-scaled or binary raster within each animal's 99% range according to Equation (4) and the resulting values of N according to Equation (3). We generated empirical distributions of $\hat{\beta}$ and \hat{s}^2 as described in Supplementary Appendix D for $M \in \{2, \dots, 30\}$ 216 using the average N and $\text{Var}[R(X_\beta)]$ as population-level estimates of each. We computed the empirical 95% intervals at a given M (i.e. $\alpha = 0.05$). The value of M at which the empirical interval 219 no longer contains 0 is the predicted minimum M necessary to estimate β with 95% confidence, M_{pred} (i.e. the minimum integer $M_{0.05,0.05}(\beta)$; Equation (8)).

For comparison with observation, we then resampled the estimated selection coefficients for 222 each individual within a species. For a given $M \in \{2, \dots, 30\}$ as above, we generated 4000 samples of M_i observed selection coefficients and calculated $\bar{\beta}$ for each (i.e. 4000 mean selection coefficients assuming M_i animals). This represents the observed distribution of possible $\bar{\beta}$ for 225 M_i sampled animals, assuming the total pool of animals is a representative sample. Finally, for each M we calculated the grand mean $\bar{\beta}_G$ and the empirical 95% interval of $\bar{\beta}$. The value of M at which the empirical interval no longer contains 0 is the observed minimum M necessary to 228 estimate β with 95% confidence, M_{obs} , and should correspond to M_{pred}

Empirical Validation: N

The M validation procedure described above assumes that, on average, sufficient relocations N 231 were available to estimate M . Now we consider: for a given individual-level selection coefficient β , do we have sufficient N to reject the null hypothesis for a given animal? We randomly sampled

1 animal from each dataset and calculated $\text{Var}[R(X_\beta)]$ within the animal's 99% range using the
 234 animal's specific RSF model coefficients as β . From this we calculated the predicted number of
 relocations N_{pred} necessary to estimate β given $\text{Var}[R(X_\beta)]$ (i.e. $N_{0.05,0.05}(\beta)$; Equation (3)).

For comparison, we resampled N_{sam} relocations with replacement from the animal's dataset,
 237 where $N_{sam} = \left\lfloor \frac{iN_{total}}{50} \right\rfloor$, $i \in \{1, \dots, 25\}$, and N_{total} is the total number of relocations recorded
 for that animal. This unconventional sequence was selected because (i) it produced a compara-
 ble number of observed values of N to that in the M validation procedure (25 observed N vs.
 240 29 pairings of M_{pred} and M_{obs}) while (ii) keeping the increments small enough to retain detail
 given that estimates of N can be orders of magnitude larger than those of M . We generated 4000
 samples of $N_{sam,i}$ relocations and fit an RSF to each individual sample (i.e. 4000 RSFs assuming
 243 $N_{sam,i}$ relocations). We retained all originally generated available locations in each RSF so as to
 maintain a constant availability kernel between RSFs with different relocations. We then calcu-
 lated the mean selection coefficient $\bar{\beta}$ and its 95% empirical interval at a given N_{sam} . The value of
 246 N_{sam} at which the empirical interval no longer contains 0 is the observed minimum N necessary
 to reject $H_0 : \beta = 0$ at significance level $p \leq 0.05$, N_{obs} , and should correspond to N_{pred} .

Results

249 The equations (3, 8) at the basis of our methods provide analytically predicted values for the
 number of relocations N and the number of animals M required to parameterize an RSF. Simple
 1-to-1 plots of N_{pred} vs. N_{obs} and M_{pred} vs. M_{obs} across all 10 species revealed strong agreement
 252 between observation and prediction (Fig. 3). Interestingly, 1 outlier was identified for N and 1
 for M . Visual inspection of the data revealed that these outliers occurred alongside availability
 samples within individual RSFs that did not properly describe the true spatial integral of re-
 255 source availability (i.e. $\int_{\Omega} A(\mathbf{x}')W(\mathbf{x}')d\mathbf{x}'$; Equation (1)). That is, the 1:1 used/available sampling
 protocol undersampled the available space. Thus, N_{pred} and M_{pred} can be sensitive to insufficient
 spatial sampling of availability, and care should be taken to avoid such undersampling before

258 applying these methods.

Given this, we then asked, what is the role of the definition of availability (sensu Johnson 1980) in shaping these relationships? We estimated RSFs as described above using 2 additional
261 availability definitions that varied the spatial extent of availability for a given animal: (i) within the entire collection of 99% KDEs (i.e. animals have access to resources within all KDEs equally), and (ii) within the entire site (i.e. animals have access to all resources within the study site,
264 including those outside of 99% KDEs). This mimics the problem of sufficiently sampling availability described above, but now availability is driven by conceptual or ecological definitions rather than by the sampling protocol itself. Similar consistency in $\hat{\beta}$ was observed across M
267 within a given definition of availability, but the sign and magnitude of $\hat{\beta}$ varied with availability from individual- to site-level (Fig. 4). Despite the change in sign and magnitude, Equation (8) is able to calculate M_{pred} consistent with observation across availability definitions. By inclusion,
270 given that N_{pred} is a component of M_{pred} (see Equation (5)), we also observe that Equation (3) is consistent with observation across availability definitions.

Lastly we asked, what are the primary drivers of N_{pred} and M_{pred} as estimated by Equations (3, 8)? A key outcome of our method is that this question can be answered analytically, by
273 simply inspecting Equations (3, 8). Equation (3) shows that N_{pred} is inversely correlated to both $\text{Var}[R(X_\beta)]$ and β^2 , indicating that as either landscape variation or selection strength increase, so must N_{pred} . Similarly, because β^2 is contained in the denominator of Equation (8), M_{pred}
276 must decrease with increasing selection strength. To demonstrate this graphically, we plotted log-log regressions of N_{pred} and M_{pred} against $\text{Var}[R(X_\beta)]$ and $|\beta|$, respectively, using data from
279 all 10 species to evaluate whether these analytical predictions bear out under real data scenarios (Fig. 5). Per the analytical predictions, both N_{pred} and M_{pred} declined as their respective predictors (landscape variation or habitat selection strength) increased. It is also worth noting that
282 inclusion of both predictors within the same log-log regression (i.e. M_{pred} as a function of both $\text{Var}[R(X_\beta)]$ and $|\beta|$) returned $R^2 = 1$, as expected given that N_{pred} and M_{pred} are determined only by $\text{Var}[R(X_\beta)]$ and β .

285 Discussion

It is common in studies using RSFs to assume that a sample size of $M \geq 30$ animals tagged is necessary for consistent and reliable inference (Leban *et al.* 2001; Hebblewhite & Haydon 2010).
288 Further, it has been suggested that more complex landscapes (i.e. those with higher landscape variance $\text{Var}[R(X_\beta)]$) require more relocations per animal N to characterize selection (Wisiz *et al.* 2008). Our analytical models and validation procedures return a rather different set of results.
291 First, we found that M_{pred} was often (but not always) substantially less than 30, and this prediction strongly agreed with observation based on resampling of GPS-based telemetry across a variety of ecologically contrasting species (Figs. 3, S1-S20). Strikingly, our analytical results show
294 conclusively that M can only decline with increasing absolute magnitude of β (Equation (8)). Although M indeed increases with increasing variation in individual selection (Equation (8)), this indicates that the most biologically relevant effects (i.e. those with the greatest $|\beta|$) can often be
297 estimated with only a few animals (Fig. 5).

This reveals important ethical and budgetary implications for wildlife studies. For example, consider the mule deer dataset containing 106 tagged individuals (Table S1). Our findings show
300 that the strongest effects on the utilization distribution (i.e. selection for temperature, evergreen forest, and shrublands) may be estimated with fewer than 20 animals (Fig. S20), i.e. 80% fewer animals than were used. This means that, using a conservative estimate of US\$2,450 for each GPS
303 collar and data fees (K. L. Monteith, pers. obs.), for the aspects of the study focused on identifying the relevant resource drivers of animal distributions as in typical RSF studies, this project could have spent \$210,700 less than it did (excluding researcher/technician effort, which has significant
306 costs in itself). Of course, it may still be necessary to tag more animals, for aspects of the study beyond resource selection analysis, but this financial discrepancy is still worth bearing in mind as it is not a trivial amount.

309 Compared to the popular approach of tagging as many animals as possible and constructing phenomenological models to identify ecological mechanisms post hoc (colloquially referred

to as “collar-and-foller”; Dunn 2004; Fieberg & Johnson 2015), our analytical results suggest re-
312 searchers start with efforts aimed at constructing a priori hypotheses and associated models, then
use our Equations (3, 8) to estimate the number of animals and locations per animal required for
the study aims (Johnson *et al.* 2015).

315 Second, N_{pred} (the number of independent relocations per individual) also strongly agreed
with observation, with both predicted and observed N in the 1000s or larger (Fig. 3). This agrees
with findings that within-replicate sample sizes should generally be large (e.g. Wisz *et al.* 2008);
318 however, our analytical expressions also conclusively demonstrate that N is directly calculable
(Equation (3)) and as with M is expected to generally decline with increasing $\text{Var}[R(X_\beta)]$ and
 β . These conclusions for both M and N are not only analytically proven but are additionally
321 supported by real data bearing out the analytical predictions (Figs. 3–5). As such, our findings
demonstrate that not only are M and N imminently calculable given a known landscape and
some expectation of β , but the expected trends in M and N with respect to landscape complexity
324 and the strength of animal preference are opposite to those predicted by previous studies.

Why are our results contrary to so much of the preceding literature? One possibility could
lie in the “golden rule” of sample size, i.e. that $M \geq 30$ is required for a sample size sufficient to
327 invoke the Central Limit Theorem and assume a roughly normal distribution of possible sample
means (Aho 2014, p. 154), or to ignore non-normality because a model structure is somehow “ro-
bust” to non-normality (e.g. Hector 2015, p. 48). This is reinforced by an absence of mathematical
330 attention to the sample size question. Previous studies have used simulation or empirical analy-
ses to explore sample size sufficiency within particular species or systems (e.g. Leban *et al.* 2001;
Loe *et al.* 2012; Sequeira *et al.* 2019), leading to conclusions that are quite specific to a given study
333 but then are widely adopted as inferring pattern across all systems. By defining the problem
mathematically (i.e. at what values of M and N do we reject the null hypothesis $100(1 - \alpha)\%$
of the time at significance $p?$), we instead arrive at general analytical solutions that then may
336 be tested with simulations and empirical analyses that are specifically designed for those solu-
tions, rather than relying on intuitive but incorrect assumptions about the relationships between

landscape variation relative to selection strength and RSF sample size sufficiency.

339 Our calculations show that the required M and N for a given study are dependent entirely
on $|\beta|$ and $\text{Var}[R(X_\beta)]$. The latter can be directly calculated given a landscape and an expectation
for β , but selecting an appropriate expected β is a critical step in estimating M and N . For
342 *a priori* planning this could be accomplished using expert knowledge and previous literature;
however, there may be no conceivable prior expectation of β in some RSF exercises. In such a
case, one may elect to perform for example a sensitivity analysis given a range of β to select
345 conservative estimates of M and N . Further, observe that β is often affected by a variety of
ecological phenomena, including resource availability, competitor density, and seasonal effects
(Myerud & Ims 1998; McLoughlin *et al.* 2010; van Beest *et al.* 2016; Paolini *et al.* 2018). This
348 implies that Equations (3 & 8) estimating N and M respectively are in fact hierarchical with
dependencies not only on landscape variance (i.e. $\text{Var}[R(X_\beta)]$) but also landscape composition
and structure as they determine β . In scenarios where we are uncertain about possible values of
351 β , we may construct informed models suggesting likely values of β given an expectation for how
the animal should behave as resource availability changes (e.g. generalized functional response
models; Matthiopoulos *et al.* 2011). Such a hierarchical approach "borrows" information from
354 the functional response model to provide a more ecologically informed range of possible β for a
sensitivity analysis (Hobbs & Hooten 2015).

Our results also provide new insight into the importance of sufficient spatial sampling of
357 availability. There was 1 outlier in the 1-to-1 comparison of N_{pred} and N_{obs} , and 1 in that of M_{pred}
and M_{obs} (Fig. 3). These occurred because the 99% range of the animals under observation was so
large, and the underlying landscape rasters so finely grained, that our 1:1 use/availability sample
360 did not accurately portray the spatial integral of availability $\int_{\Omega} A(\mathbf{x}')W(\mathbf{x}')d\mathbf{x}'$ (Equation (1)).
This caused M_{pred} and N_{pred} to be based on a different, incomplete availability set compared
to the fitted RSFs. This highlights a now well-established conclusion: the sampling intensity
363 for availability in RSF-styled models should be as large as necessary to correctly characterize
the availability integral. Previous RSF-styled studies (including SSF) have almost exclusively

sampled availability as we did here using ratios (i.e. 1:1, 1:10, 1:100, etc.; e.g. Boyce & McDonald
366 1999; Fortin *et al.* 2005; Street *et al.* 2016). This encourages potentially sampling at an intensity
insufficient to approximate the spatial integral (as occurred here for outlying points in Fig. 3;
Benson 2013). Our findings reinforce that availability sampling should be conducted in a regular
369 (non-random) fashion at a spatial interval equal to the resolution of the underlying landscape
data such that every possible location within the availability boundary is considered (Benson
2013; Fieberg *et al.* 2021). This would produce an availability observation for every raster pixel
372 and thus overlap between used and available locations. Although it is suggested that such overlap
is to be avoided (e.g. Wisz *et al.* 2008), logically a used location must also be available otherwise it
cannot be selected, and removing used locations from availability can potentially omit important
375 effects from the availability sample. Our equations indicate that this overlap is required by the
mathematics of resource selection.

This finding reinforces that defining resource availability at the scale of the estimated model is
378 a critical first step in planning a RSF. Our multi-scale analysis of mule deer produced remarkably
different estimates for M at each of the three definitions of availability (site-wide, population-
wide, and individual availability; Fig. 4), indicating that failure to properly define the available
381 space can lead to incorrect estimates of both M and N . This is not a new finding; the importance
of properly defining what is available for an animal to select is a long-standing issue in RSA re-
search (e.g. Johnson 1980; Boyce & McDonald 1999; Fortin *et al.* 2005). However, the difficulty of
384 calculating M and N for planning a RSA study increases with the biological scale of the intended
model. Site-wide availability assumes all animals have access to resources on the entire land-
scape and is similar in concept to first-order selection (i.e. where the species is located; Johnson
387 1980), but availability may be sampled as a regular grid across the entire site. Population-wide
availability refines the scale toward second-order selection (i.e. where animals situate their home
ranges), but accurately defining a perimeter for the likely population range *a priori* within which
390 to sample availability is non-trivial. This becomes even more difficult under individual availabil-
ity; how can we anticipate the size and placement of individual home ranges? A feasible solution

may be to delineate population boundaries and within this delineation generate random ranges
393 with area determined by the literature and expert knowledge. This would enable calculation
of an average theoretical availability for any animal in the study site with appropriate standard
error. This could then be used to produce an average prediction for M and N , and associated
396 confidence limits, across the average home range composition.

We approached this analysis with the aim of evaluating how many GPS-tagged animals M
are needed for RSF estimation, but there are many RSF applications that do not seek M or
399 require GPS-tagging (e.g. plant distributions). For example, RSFs estimated for rare species
will typically lack sufficient data for individual-based estimation of the utilization distribution
 $u(x)$ such that M is irrelevant and only N need be evaluated. RSFs can be sensitive to small
402 sample sizes (Wisz *et al.* 2008), yet they often generate accurate predictions for rare species with
small datasets (McCune 2016), suggesting that for some rare species smaller N is sufficient to
achieve a robust model. Our findings permit evaluation of this. Consider a hypothetical scenario
405 where an RSF is estimated for a rare species with 100 observations and β is recorded. Here,
Equations (3–4) could be used to calculate N_{pred} as a *post hoc* metric of confidence assuming
 β is the true population/species-level average selection coefficient. If $N_{pred} \leq 100$, then one
408 could trust the outcome of the RSF; conversely, $N_{pred} > 100$ would indicate additional data
collection is necessary. Where that is not possible, one could systematically adjust z_α and $z_{p/2}$
(Equation (3)) to determine the confidence interval that rejects the null hypothesis $H_0 : \beta = 0$ and
411 establish a degree of confidence for model outcomes. Although we performed validation using
GPS-based datasets, Equation (3) is agnostic to how data are collected and may also be applied
to sessile organisms. Provided we can plausibly accept that β is roughly true and individual
414 variation is either minimal or accommodated by the population-level β (presumably what has
been estimated), our equations may be easily extended to evaluate almost any RSF-based study.

We must emphasize that although M may only decline with increasing β , Equation (3) allows
417 for a turning point to occur such that N initially decreases with $|\beta|$ but eventually increases at
very large $|\beta|$ (see Supplemental Information, Equation (25)). When selection strength is particu-

larly strong, smaller sample sizes make it much more likely to obtain perfect separation between
420 used and unused resources. In such a case one must collect more data to observe the animal not
using a resource unit it should strongly prefer (or in the case of negative selection, to observe it
using a resource it should strongly avoid). Practically, this means that sampling intensity for RSA
423 is a greater concern for specialist organisms than generalists because specialists should exhibit
typically larger $|\beta|$ for preferred/avoided resource units than generalists. Although the equations
identified here allow us to directly calculate N for any landscape and expected selection strength,
426 we should generally expect that specialists will require larger N for precise RSF estimation.

The equations identified here explicitly evaluate the compatibility of a dataset with a given
hypothetical model (i.e. β). Calculating their solutions across gradients of N and M reveals
429 how the number of data points (relocations) and number of replicates (animals) affect deter-
mination of compatibility. Rather than the values of N and M required to achieve statistical
significance, we instead suggest these be used to determine the relevant sample sizes necessary
432 to achieve "consistent" results, i.e. if we increase sampling intensity would we see substantial
change in estimated coefficients? From this perspective, we conclude that the number of ani-
mals M required to consistently estimate the most biologically relevant effects in an RSF can be
435 well below commonly touted sample size thresholds (i.e. $M \geq 30$), particularly when selection
strength is strong (Fig. 3, 5). Moreover, the number of required relocations N can also be quite
small but tends toward larger sample sizes when landscape variation is small. The sufficiency
438 of samples sizes M and N is dependent entirely on the strength of selection ($|\beta|$) and landscape
variation with respect to selection strength ($\text{Var}[R(X_\beta)]$). Rather than simply reporting sample
sizes in RSF studies, researchers should pay explicit attention to the effect their sample size has
441 on their findings. Regardless of study organism, ecosystem, or scenario, our equations may be
equally applied to *any* RSF-based study to evaluate the consistency of expected outcomes given
a dataset of a particular size. This will partially address the so-called "replicability crisis" by
444 explicitly characterizing the consistency of model outputs in relation to sample sizes and effect
sizes, thereby increasing reader (and reviewer) confidence in such studies. Similarly, editors and

reviewers should abandon preconceived notions of what makes a sufficient sample size in RSF
447 in favor of evaluating the sensitivity of findings to sample size based on the mathematical rules
identified here, for it is also feasible (and indeed demonstrable) that consistent findings can be
achieved with as few as $N = 100$ relocations per animal and $M = 2$ animals (Fig. 3). Because
450 M and N can be easily calculated provided knowledge of ecological and landscape effects, we
argue that such calculations should henceforth be a mandatory component for all RSF studies.

Acknowledgments

453 We thank the Movement Ecology Special Interest Group of The British Ecological Society for
valuable discussion regarding this topic, in particular Marie Auger-Méthé. We also thank John
Fieberg for providing a friendly review of an early iteration of this manuscript. GMS thanks
456 the Mississippi Agricultural and Forestry Experiment Station (MAFES); the Forest and Wildlife
Research Center (FWRC); the United States Department of Agriculture National Institute of Food
and Agriculture (USDA NIFA); and the Mississippi Department of Wildlife, Fisheries, and Parks
459 (MDWFP) for supporting this research and associated data collection. JRP thanks the School of
Mathematics and Statistics at the University of Sheffield for granting him study leave which has
helped enable the research presented here. CMP, LJN, and EV respectfully acknowledge that
462 Riding Mountain National Park is the traditional homeland of the Anishinabe People and the
Métis Nation, within Treaty 2 territory and at the crossroads of Treaties 1 and 4. Contributions
of SD and BKS were partially supported by the Mississippi State University Extension Service
465 (MSUES), FWRC, and MDWFP. Contributions of JCB, OER, PES, GD, DAK, and DAB were par-
tially supported by USDA Animal and Plant Health Inspection Service (APHIS), Wildlife Ser-
vices (WS), National Wildlife Research Center (NWRC), and U.S. Department of Energy (DOE)
468 through Cooperative Agreement number DE-FC09-07SR22506 with the University of Georgia
Research Foundation. Contributions of ARR and JMF were supported by the Ontario Ministry
of Natural Resources and Forestry (OMNRF). Contributions of KLM and SPD were supported

471 by Wyoming Game and Fish Department (WGFD), Bureau of Land Management (BLM), Muley
Fanatic Foundation, Boone and Crockett Club, Wyoming Wildlife and Natural Resources Trust,
Knobloch Family Foundation, Wyoming Animal Damage Management Board, Wyoming Gov-
474 ernor's Big Game License Coalition, Bowhunters of Wyoming, Wyoming Outfitters and Guides
Association, United States Forest Service (USFS), and United States Fish and Wildlife Service (US-
FWS). Contributions of CMP, LJN, and EV were supported primarily by Parks Canada Agency
477 (Riding Mountain National Park of Canada) and the Natural Science and Engineering Research
Council of Canada (NSERC). Contributions of FMvB, LTB, and NMS were supported by the
AUFF Starting Grant (AUFF-F-2016-FLS-8-16).

480 **Author Contributions**

GMS conceived and directed the project and developed the validation and resampling frame-
work, in collaboration with JRP and LB. JRP derived the analytic expressions, and GMS and JRP
483 conducted the data analyses in collaboration with LB. GMS, JRP, and LB wrote the manuscript.
Remaining authors collected and contributed data and contributed equally to edits and revisions.

Data Accessibility

486 RSF and landscape data will be uploaded to a permanent repository following formal acceptance
of this manuscript for publication.

References

- 489 Aho, K.A. (2014). *Foundational and Applied Statistics for Biologists using R*. CRC Press, Boca Raton, FL.
- van Beest, F.M., McLoughlin, P.D., Mysterud, A. & Brook, R.K. (2016). Functional responses in
492 habitat selection are density dependent in a large herbivore. *Ecography*, 39, 515–523.
- Benson, J.F. (2013). Improving rigour and efficiency of use-availability habitat selection analyses with systematic estimation of availability. *Methods in Ecology & Evolution*, 4, 244–251.
- 495 Boyce, M.S. & McDonald, L.L. (1999). Relating populations to habitats using resource selection functions. *Trends in Ecology & Evolution*, 14, 268–272.
- Dunn, W.C. (2004). More suggestions for raising the bar for conservation - a response to anderson
498 et al. *Wildlife Society Bulletin*, 32, 594–597.
- Elith, J. & Leathwick, J.R. (2009). Species distribution models: ecological explanation and prediction across space and time. *Annual Review of Ecology, Evolution, and Systematics*, 40, 677–697.
- 501 Fieberg, J. & Johnson, D.H. (2015). MMI: multimodel inference or models with management implications? *Journal of Wildlife Management*, 79, 708–718.
- Fieberg, J., Signer, J., Smith, B. & Avgar, T. (2021). A 'how to' guide for interpreting parameters
504 in habitat-selection analyses. *Journal of Animal Ecology*, 90, 1027–1043.
- Fortin, D., Beyer, H.L., Boyce, M.S., Smith, D.W., Duchesne, T. & Mao, J.S. (2005). Wolves influence elk movements: behaviour shapes a trophic cascade in Yellowstone National Park. *Ecology*, 86,
507 1320–1330.
- Fretwell, S.D. & Lucas, H.L. (1969). On territorial behavior and other factors influencing habitat distribution in birds. I. Theoretical development. *Acta Biotheoretica*, 19, 16–36.

- 510 Gillies, C.S., Hebblewhite, M., Nielsen, S.E., Krawchuk, M.A., Aldridge, C.L., Frair, J.L., Saher, D.J., Stevens, C.E. & Jerde, C.L. (2006). Application of random effects to the study of resource selection by animals. *Journal of Animal Ecology*, 75, 887–898.
- 513 Guillera-Aroita, G. & Lahoz-Monfort, J.J. (2012). Designing studies to detect differences in species occupancy: power analysis under imperfect detection. *Methods in Ecology & Evolution*, 3, 860–869.
- 516 Hebblewhite, M. & Haydon, D.T. (2010). Distinguishing technology from biology: a critical review of the use of GPS telemetry data in ecology. *Philosophical Transactions of the Royal Society of London B: Biological Sciences*, 365, 2303–2312.
- 519 Hector, A. (2015). *The New Statistics with R: An Introduction for Biologists*. Oxford University Press, Oxford, UK.
- Hobbs, N.T. & Hooten, M.B. (2015). *Bayesian Models: A Statistical Primer for Ecologists*. Princeton University Press, Princeton, NJ.
- 522
- James, G., Witten, D., Hastie, T. & Tibshirani, R. (2013). *An Introduction to Statistical Learning with Applications in R*. Springer, New York, NY.
- 525 Johnson, D.H. (1980). The comparison of usage and availability measurements for evaluating resource preference. *Ecology*, 61, 65–71.
- Johnson, P.C.D., Barry, S.J.E., Ferguson, H.M. & Müller, P. (2015). Power analysis for generalized linear mixed models in ecology and evolution. *Methods in Ecology & Evolution*, 6, 133–142.
- 528
- Leban, F.A., Wisdom, M.J., Garton, E.O., Johnson, B.K. & Kie, J.G. (2001). Effect of sample size on the performance of resource selection analyses. In: *Radio Tracking and Wildlife Populations* (eds. Millspaugh, J.J. & Marzluff, J.M.). Academic Press, New York, NY, chap. 11, pp. 291–307.
- 531
- Loe, L.E., Bonenfant, C., Meisingset, E.L. & Mysterud, A. (2012). Effects of spatial scale and

- sample size in GPS-based species distribution models: are the best models trivial for red deer
534 management? *European Journal of Wildlife Research*, 58, 195–203.
- Manly, B.F.J., McDonald, L.L., Thomas, D.L., McDonald, T.L. & Erickson, W.P. (2002). *Resource
Selection by Animals: Statistical Design and Analysis for Field Studies*. 2nd edn. Kluwar Academic
537 Publishers, Dordrecht, The Netherlands.
- Matthiopoulos, J., Hebblewhite, M., Aarts, G. & Fieberg, J. (2011). Generalized functional re-
sponses for species distributions. *Ecology*, 92, 583–589.
- 540 McCune, J.L. (2016). Species distribution models predict rare species occurrences despite signifi-
cant effects of landscape context. *Journal of Applied Ecology*, 53, 1871–1879.
- McLoughlin, P.D., Morris, D.W., Fortin, D., Vander Wal, E. & Contasti, A.L. (2010). Considering
543 ecological dynamics in resource selection functions. *Journal of Animal Ecology*, 79, 4–12.
- Millsaugh, J.J., Skalski, J.R., Kernohan, B.J., Raedeke, K.J., Brundige, G.C. & Cooper, A.B. (1998).
Some comments on spatial independence in studies of resource selection. *Wildlife Society Bul-
546 letin*, pp. 232–236.
- Mysterud, A. & Ims, R.A. (1998). Functional responses in habitat use: availability influences
relative use in trade-off situations. *Ecology*, 79, 1435–1441.
- 549 Paolini, K.E., Strickland, B.K., Tegt, J.L., VerCauteren, K.C. & Street, G.M. (2018). Seasonal varia-
tion in preference dictates space use in an invasive generalist. *PLoS One*, 13, e0199078.
- Potts, J.R., Auger-Méthé, M., Mokross, K. & Lewis, M.A. (2014). A generalized residual technique
552 for analysing complex movement models using earth mover's distance. *Methods in Ecology and
Evolution*, 5, 1012–1022.
- Renner, I.W. & Warton, D.I. (2013). Equivalence of MAXENT and Poisson point process models
555 for species distribution modeling in ecology. *Biometrics*, 69, 274–281.

- Schlather, M., Malinowski, A., Oesting, M., Boecker, D., Strokorb, K., Engelke, S. *et al.* (2016). Randomfields: Simulation and analysis of random fields, r package. Webpage <http://CRAN.R-project.org/package=RandomFields>.
- 558
- Sequeira, A.M.M., Heupel, M.R., Lea, M.A., Eguíluz, V.M., Guarte, C.M., Meekan, M.G. *et al.* (2019). The importance of sample size in marine megafauna tagging studies. *Ecological Applications*, In Press, e01947.
- 561
- Street, G.M., Fieberg, J., Rodgers, A.R., Carstensen, M., Moen, R., Moore, S.A., Windels, S.K. & Forester, J.D. (2016). Habitat functional response mitigates reduced foraging opportunity: implications for animal fitness and space use. *Landscape Ecology*, 31, 1939–1953.
- 564
- Strickland, M.D. & McDonald, L.L. (2006). Introduction to the special section on resource selection. *Journal of Wildlife Management*, 70, 321–323.
- 567
- Wisz, M.S., Hijmans, R.J., Li, J., Peterson, A.T., Graham, C.H., Guisan, A. & NCEAS Predicting Species Distributions Working Group (2008). Effects of sample size on the performance of species distribution models. *Diversity & Distributions*, 14, 763–773.

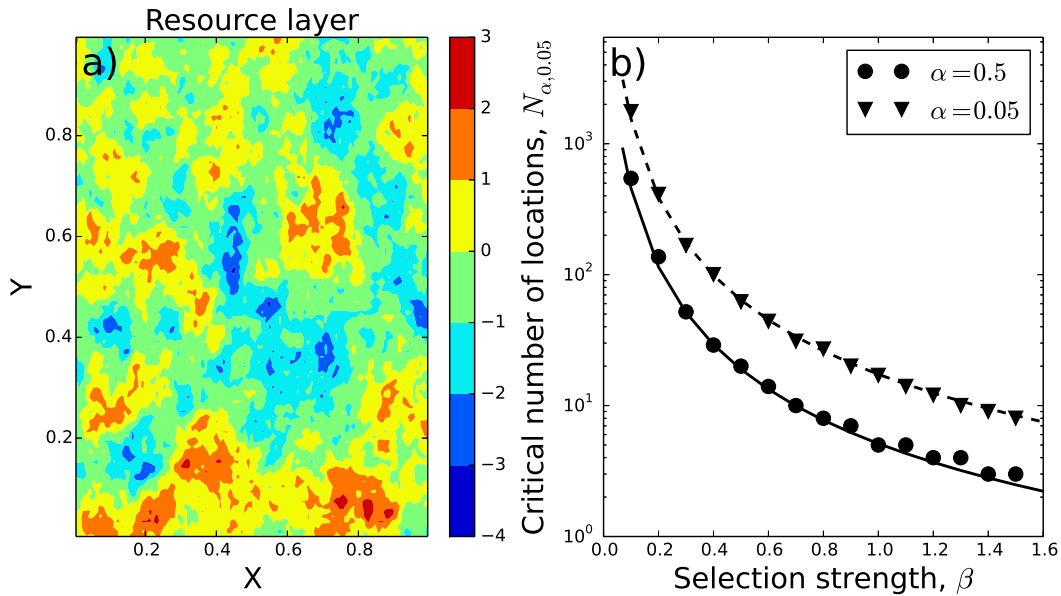


Figure 1: **Performance of analytic expression on simulated data.** Panel (a) shows a simulated resource layer, $R(x)$, which was used to construct the utilisation distribution (Equation 2) from which the simulated animal locations were samples. The circles (resp. triangles) in Panel (b) show the empirically-derived values of $N_{0.5,0.05}(\beta)$ (resp. $N_{0.05,0.05}(\beta)$), the minimum number of samples required so that there is a 50% chance (resp. 95% chance) of rejecting the null hypothesis that $\beta = 0$ at a significance level of $p = 0.05$. The solid line (resp. dashed line) in Panel (b) shows the corresponding analytic approximations given by Equation (3) and the remarkable agreement with the empirically-derived values.

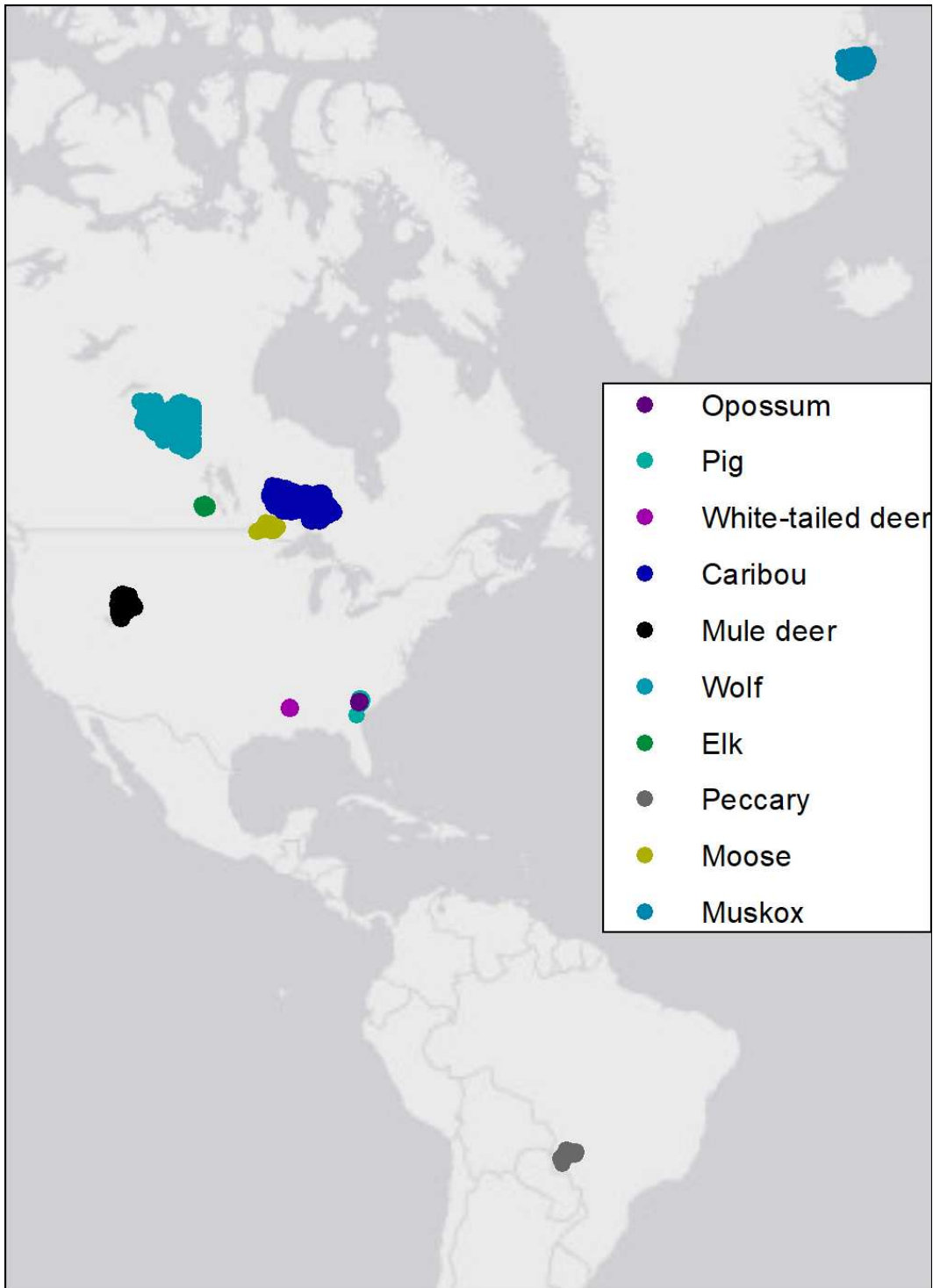


Figure 2: **Data distribution.** Geographic locations of GPS datasets (5,678,623 GPS relocations) across 511 individually collared members of 10 species.

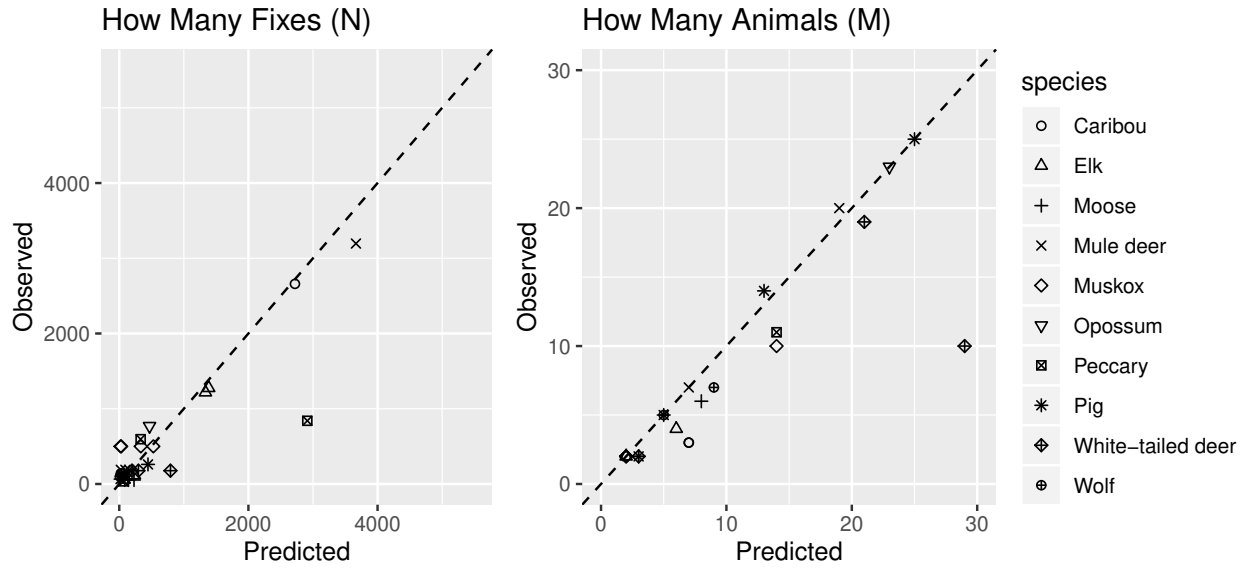


Figure 3: **1-to-1 comparison of predicted and observed M and N.** Two outliers are observed for *N* and one for *M* due to mismatch between sampled and true availability within the animals' 99% ranges. Dashed lines are those with gradient 1 crossing through the origin.

Mule Deer: Temperature and Scale

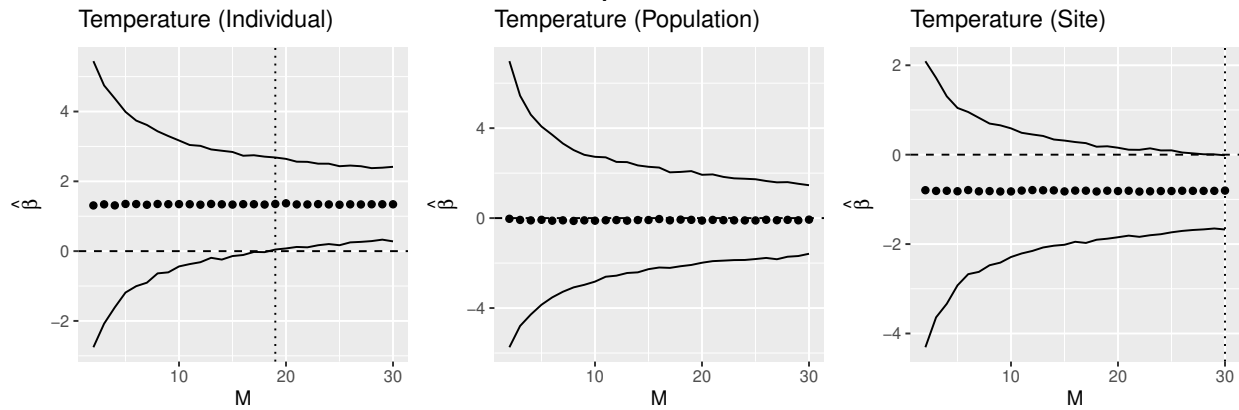


Figure 4: **Comparison of predicted M across orders of availability.** M_{pred} (vertical dotted line) changes depending on whether availability for the RSF is defined at the scale of the individual (each animal has its own available locations within its own 99% KDE), population (all animals have equal access to resources within all animal's 99% KDEs), or site (all animals have equal access to resources across the entire site). If no vertical dotted line occurs, then $M_{pred} > 30$.

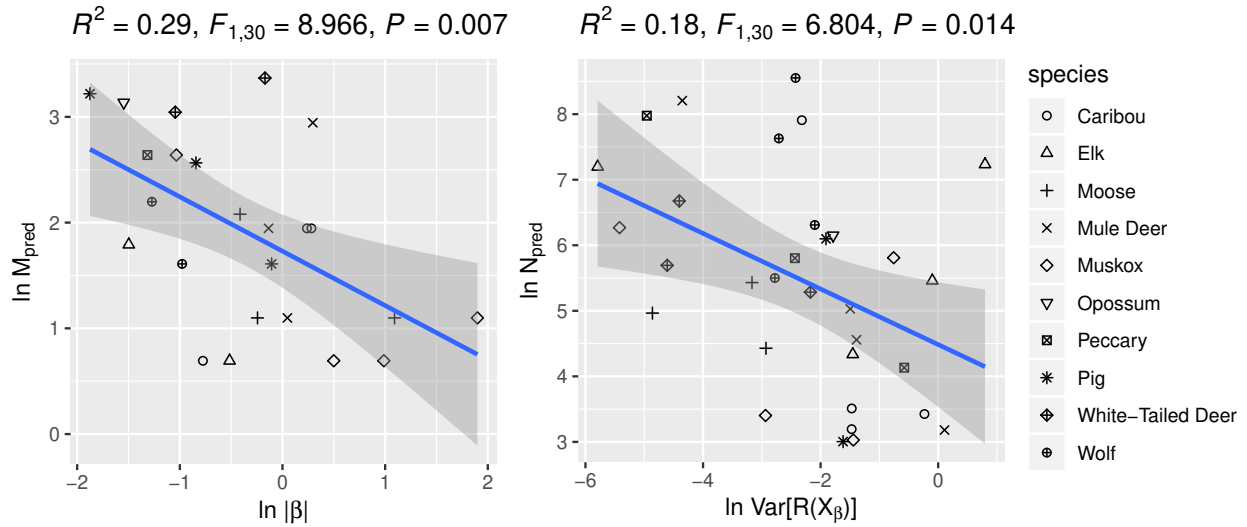


Figure 5: **Log-log regressions of predicted M vs. $|\beta|$ and predicted N vs. $\text{Var}[R(X_\beta)]$.** The predicted number of animals necessary M_{pred} declines with increasing absolute magnitude of selection (i.e. stronger effects require fewer animals to estimate), and the predicted number of relocations N_{pred} declines with increasing landscape complexity.