



UNIVERSITY OF LEEDS

This is a repository copy of *Third Lockdown Crime Effects in England and Wales*.

White Rose Research Online URL for this paper:

<https://eprints.whiterose.ac.uk/173974/>

Version: Published Version

---

**Monograph:**

Dixon, A [orcid.org/0000-0002-1926-8926](https://orcid.org/0000-0002-1926-8926), Farrell, G [orcid.org/0000-0002-3987-8457](https://orcid.org/0000-0002-3987-8457) and Johnson, S [orcid.org/0000-0002-0184-9896](https://orcid.org/0000-0002-0184-9896) (2021) *Third Lockdown Crime Effects in England and Wales*. Report. Statistical Bulletin on Crime and COVID-19 . University of Leeds

<https://doi.org/10.5518/100/39>

---

**Reuse**

This article is distributed under the terms of the Creative Commons Attribution (CC BY) licence. This licence allows you to distribute, remix, tweak, and build upon the work, even commercially, as long as you credit the authors for the original work. More information and the full terms of the licence here:

<https://creativecommons.org/licenses/>

**Takedown**

If you consider content in White Rose Research Online to be in breach of UK law, please notify us by emailing [eprints@whiterose.ac.uk](mailto:eprints@whiterose.ac.uk) including the URL of the record and the reason for the withdrawal request.

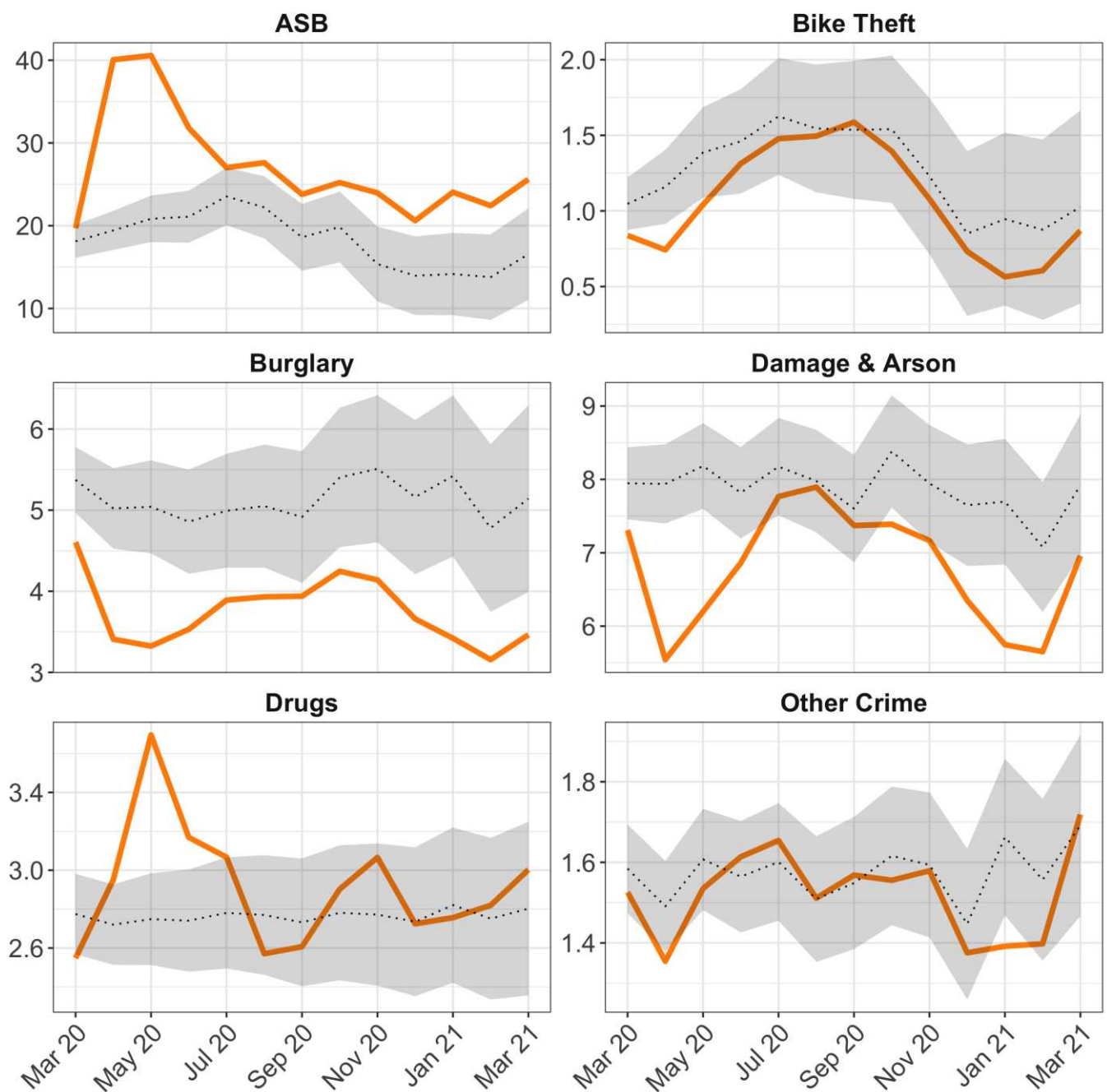


[eprints@whiterose.ac.uk](mailto:eprints@whiterose.ac.uk)  
<https://eprints.whiterose.ac.uk/>

## Third Lockdown Crime Effects in England and Wales

Antho Dixon and Graham Farrell, University of Leeds  
Shane Johnson, University College London

The third national lockdown began early January 2021 and started to ease on 8<sup>th</sup> March when schools and limited outdoor social contact resumed. Police-recorded crime rates per 10,000 population (in orange) are here compared to expected rates (black lines, with confidence intervals in grey). Crime effects in January and February 2021 were similar to first lockdown (Apr-Jun 2020) but with notable differences. Acquisitive crime except bike theft fell sharply but began to increase in March. Increases in anti-social behaviour and drug offences were smaller than first lockdown.

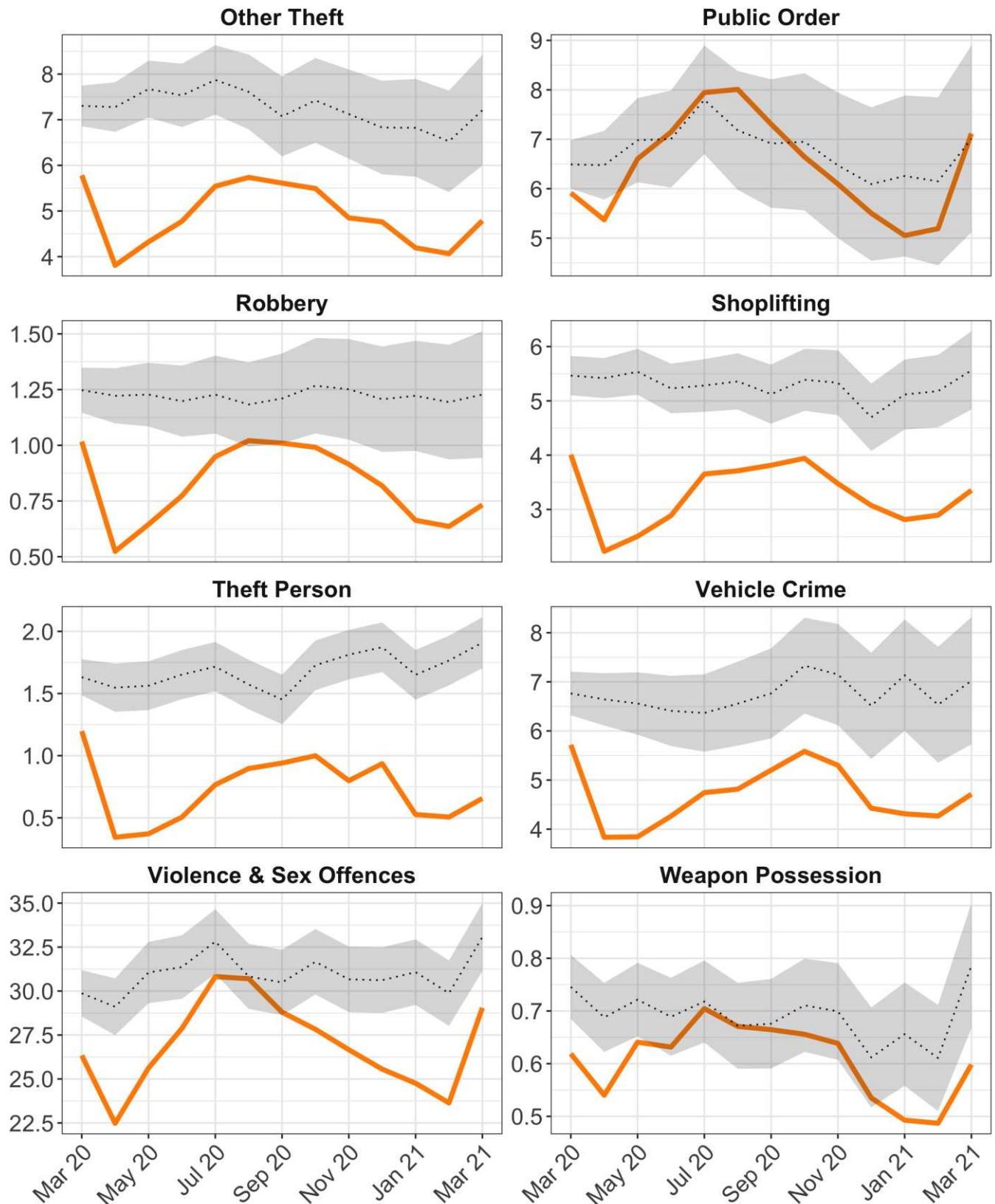




10 May 2021

## STATISTICAL BULLETIN ON CRIME AND COVID-19

Issue 15



Source: data.police.uk - all police services except Greater Manchester. Expected rates calculated with Hyndman et al.'s (2020) AutoARIMA R package. © The Authors (2021). DOI: <http://doi.org/10.5518/100/39>. ISSN: 2634-4424. This work licensed under a Creative Commons (CC-BY 4.0). Funded by Economic and Social Research Council grant ES/V00445X/1. See [www.covid19-crime.com](http://www.covid19-crime.com).