



**UNIVERSITY OF LEEDS**

This is a repository copy of *A Year of COVID-19 and Crime in England and Wales*.

White Rose Research Online URL for this paper:

<https://eprints.whiterose.ac.uk/172969/>

Version: Published Version

---

**Monograph:**

Dixon, A [orcid.org/0000-0002-1926-8926](https://orcid.org/0000-0002-1926-8926) and Farrell, G [orcid.org/0000-0002-3987-8457](https://orcid.org/0000-0002-3987-8457)  
(2021) *A Year of COVID-19 and Crime in England and Wales*. Report. Statistical Bulletin on Crime and COVID-19 (14). University of Leeds ISSN 2634-4424

<https://doi.org/10.5518/100/38>

---

**Reuse**

This article is distributed under the terms of the Creative Commons Attribution (CC BY) licence. This licence allows you to distribute, remix, tweak, and build upon the work, even commercially, as long as you credit the authors for the original work. More information and the full terms of the licence here:

<https://creativecommons.org/licenses/>

**Takedown**

If you consider content in White Rose Research Online to be in breach of UK law, please notify us by emailing [eprints@whiterose.ac.uk](mailto:eprints@whiterose.ac.uk) including the URL of the record and the reason for the withdrawal request.



[eprints@whiterose.ac.uk](mailto:eprints@whiterose.ac.uk)  
<https://eprints.whiterose.ac.uk/>

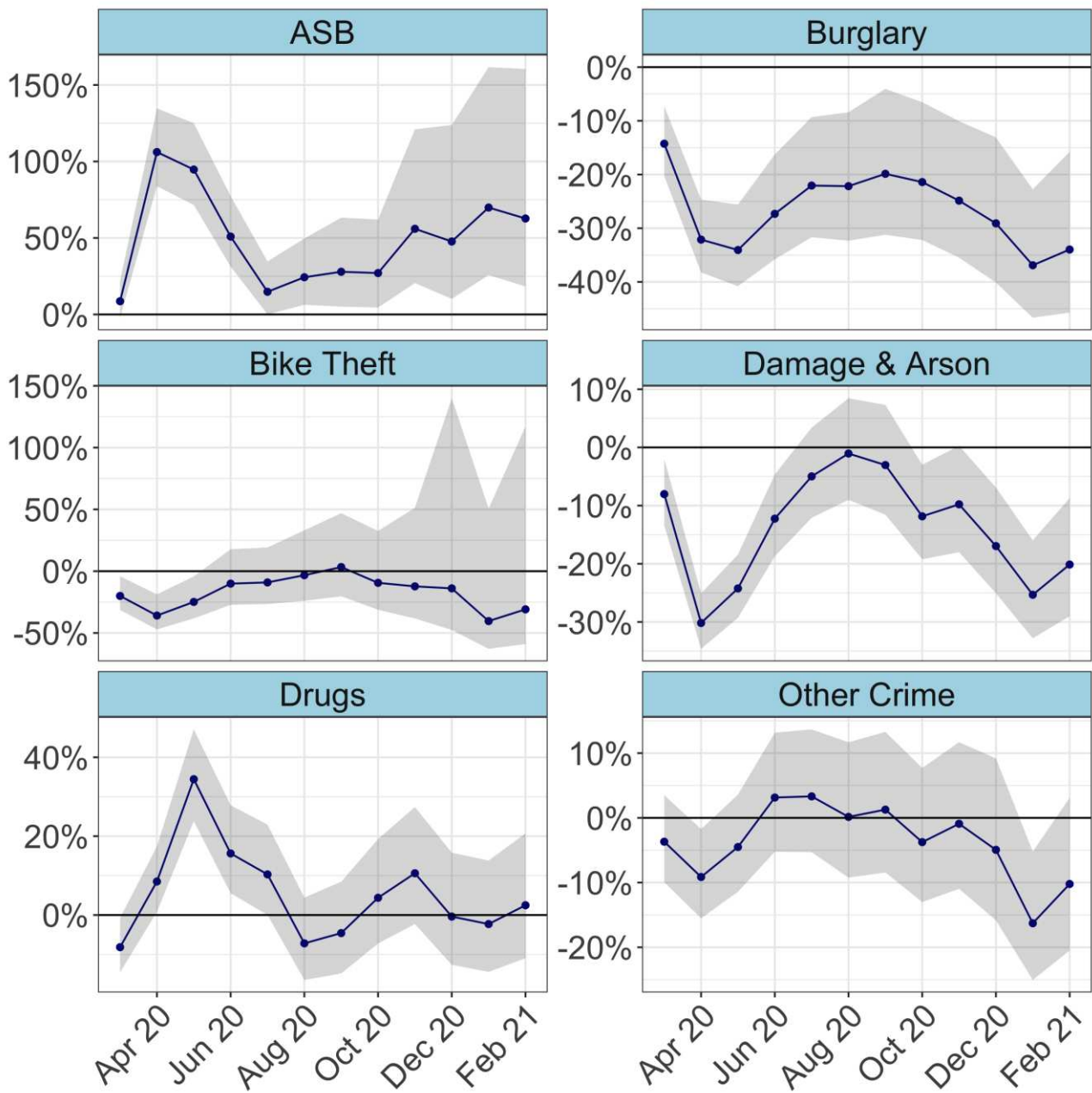


# A Year of COVID-19 and Crime in England and Wales

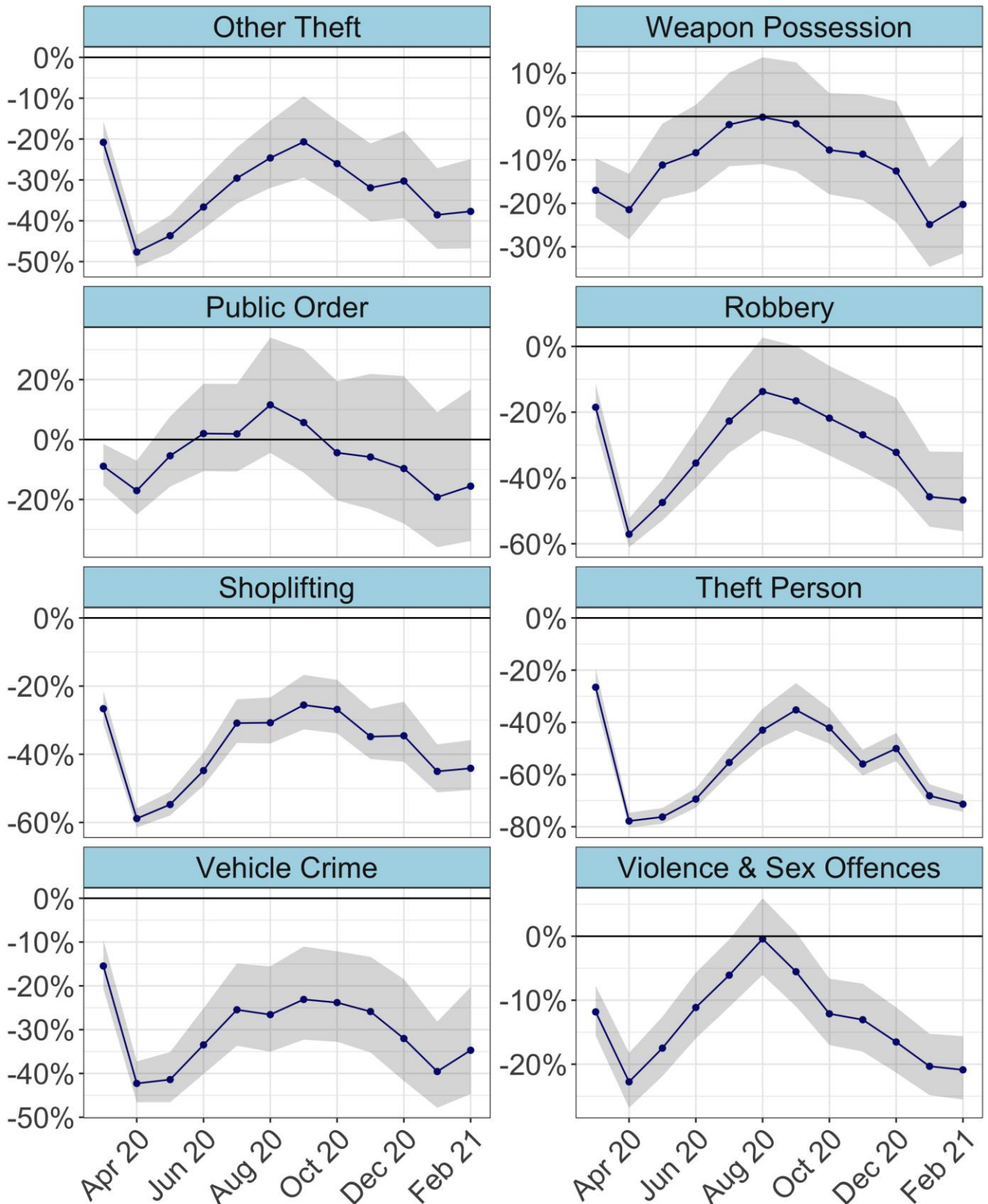
Antho Dixon and Graham Farrell

Charts show percent change in recorded crime and anti-social behaviour relative to what would be expected without the pandemic, for March 2020 to February 2021. Expected rates were calculated using 5-year ARIMA models. 95% confidence intervals are shaded. This spans first (~Apr-Jun 2020), second (Nov 2020) and third (here Jan-Feb) national lockdowns.

First national lockdown effects were larger than second, with third lockdown effects in 2021 often closer to the first. Crime effects overall reflected the stringency of movement restrictions, consistent with Halford et al.'s (2020) mobility theory of crime in the pandemic<sup>1</sup>.



<sup>1</sup> Halford et al. 2020. [Crime and coronavirus: social distancing, lockdown and the mobility elasticity of crime](#), *Crime Science* 9(11).



Source: data.police.uk - all police services except Greater Manchester. Expected rates calculated with Hyndman et al.'s (2020) AutoARIMA R package. © The Authors (2020). DOI: <http://doi.org/10.5518/100/38> . ISSN: 2634-4424. This work licensed under a Creative Commons (CC-BY 4.0). Funded by Economic and Social Research Council grant ES/V00445X/1. See [www.covid19-crime.com](http://www.covid19-crime.com) .