



UNIVERSITY OF LEEDS

This is a repository copy of *Real-world single centre use of JAK inhibitors across the rheumatoid arthritis pathway*.

White Rose Research Online URL for this paper:
<https://eprints.whiterose.ac.uk/168819/>

Version: Accepted Version

Article:

Fitton, J orcid.org/0000-0002-7795-8191, Melville, AR, Emery, P orcid.org/0000-0002-7429-8482 et al. (2 more authors) (2020) Real-world single centre use of JAK inhibitors across the rheumatoid arthritis pathway. *Rheumatology*. ISSN 1462-0324

<https://doi.org/10.1093/rheumatology/keaa858>

© The Author(s) 2021. Published by Oxford University Press on behalf of the British Society for Rheumatology. This is an author produced version of a journal article published in *Rheumatology*. Uploaded in accordance with the publisher's self-archiving policy.

Reuse

Items deposited in White Rose Research Online are protected by copyright, with all rights reserved unless indicated otherwise. They may be downloaded and/or printed for private study, or other acts as permitted by national copyright laws. The publisher or other rights holders may allow further reproduction and re-use of the full text version. This is indicated by the licence information on the White Rose Research Online record for the item.

Takedown

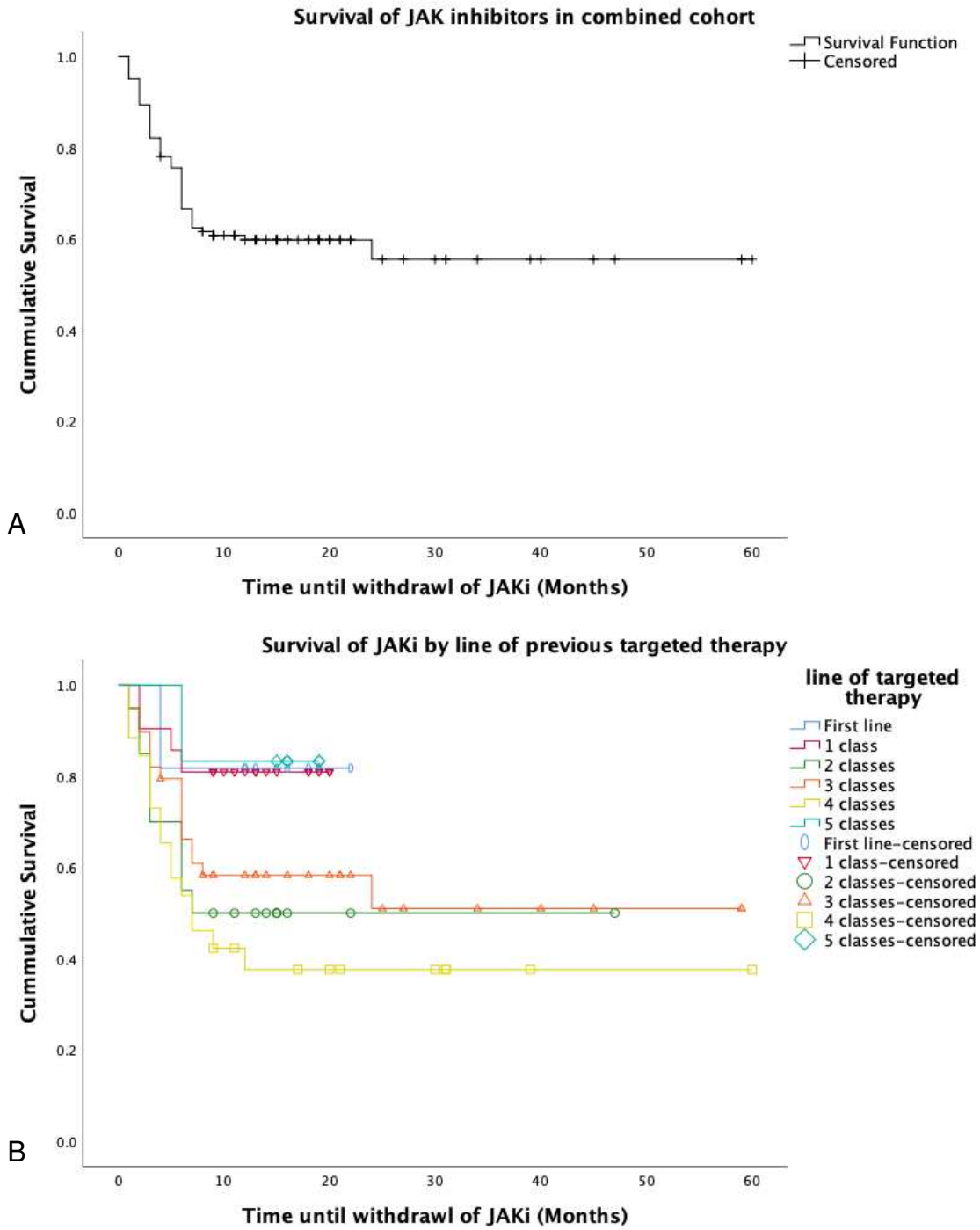
If you consider content in White Rose Research Online to be in breach of UK law, please notify us by emailing eprints@whiterose.ac.uk including the URL of the record and the reason for the withdrawal request.



eprints@whiterose.ac.uk
<https://eprints.whiterose.ac.uk/>

Supplemental table 1: Demographics and disease profile of patients commence on Tofacitinib on compassionate access scheme.

Characteristic	Compassionate access tofacitinib (n=33)
Demographics	
Age (mean) (SD)	61.1 (12.2)
Female, n (%)	23 (69.7)
RA profile	
Disease duration, years; median (IQR)	18 (4)
Seropositivity (ACPA and/or RF), n (%)	25 (75.8)
Treatment history	
Concomitant csDMARD (%)	
Any (%)	17 (51.1)
MTX	12 (33.4)
other	4 (12.1)
Number of previous bDMARDs (Median ,Range)	5 (3-7)
Number of previous classes of bDMARD (median, Range)	3 (2-4)



Supplemental Figure 1: survival of JAKi in our combined JAKi cohort over the treatment period (A) and survival of JAKi according to number of previously failed targeted therapies (B).

