



UNIVERSITY OF LEEDS

This is a repository copy of *Spatial Distributive Justice and Crime in the Pandemic*.

White Rose Research Online URL for this paper:

<https://eprints.whiterose.ac.uk/163888/>

Version: Published Version

Monograph:

Dixon, A orcid.org/0000-0002-1926-8926, Halford, E orcid.org/0000-0002-3913-1679 and Farrell, G orcid.org/0000-0002-3987-8457 (2020) *Spatial Distributive Justice and Crime in the Pandemic*. Report. *Statistical Bulletin on Crime and COVID-19*. University of Leeds ISSN 2634-4424

<https://doi.org/10.5518/100/26>

Reuse

This article is distributed under the terms of the Creative Commons Attribution (CC BY) licence. This licence allows you to distribute, remix, tweak, and build upon the work, even commercially, as long as you credit the authors for the original work. More information and the full terms of the licence here:

<https://creativecommons.org/licenses/>

Takedown

If you consider content in White Rose Research Online to be in breach of UK law, please notify us by emailing eprints@whiterose.ac.uk including the URL of the record and the reason for the withdrawal request.



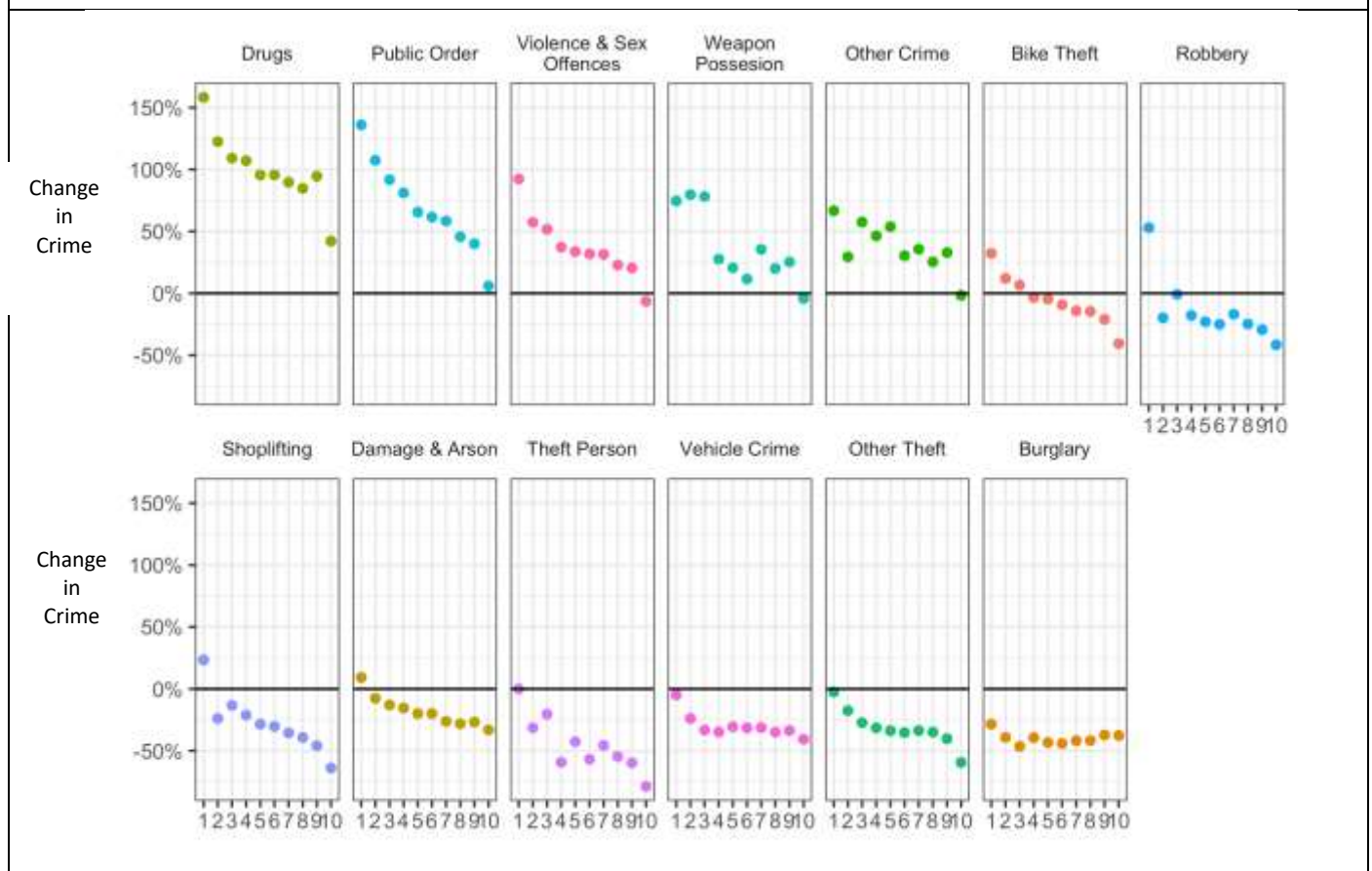
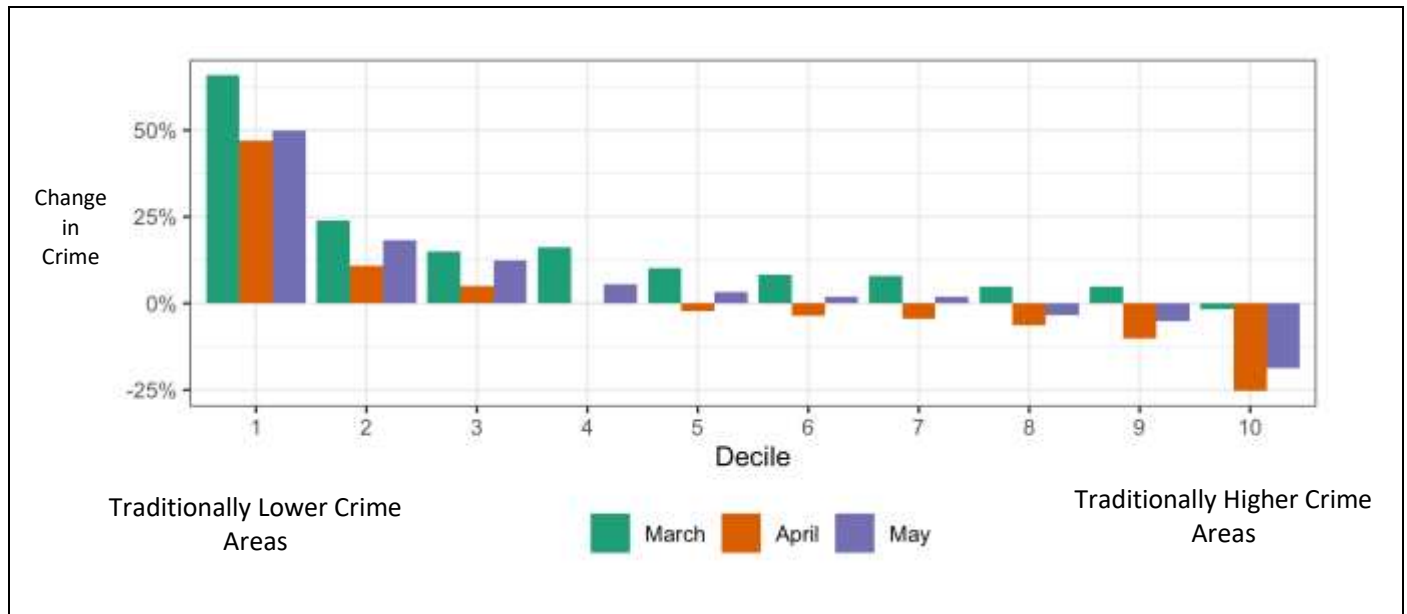
eprints@whiterose.ac.uk
<https://eprints.whiterose.ac.uk/>



Spatial distributive justice and crime in the covid-19 pandemic

Antho Dixon¹, Eric Halford², Graham Farrell¹

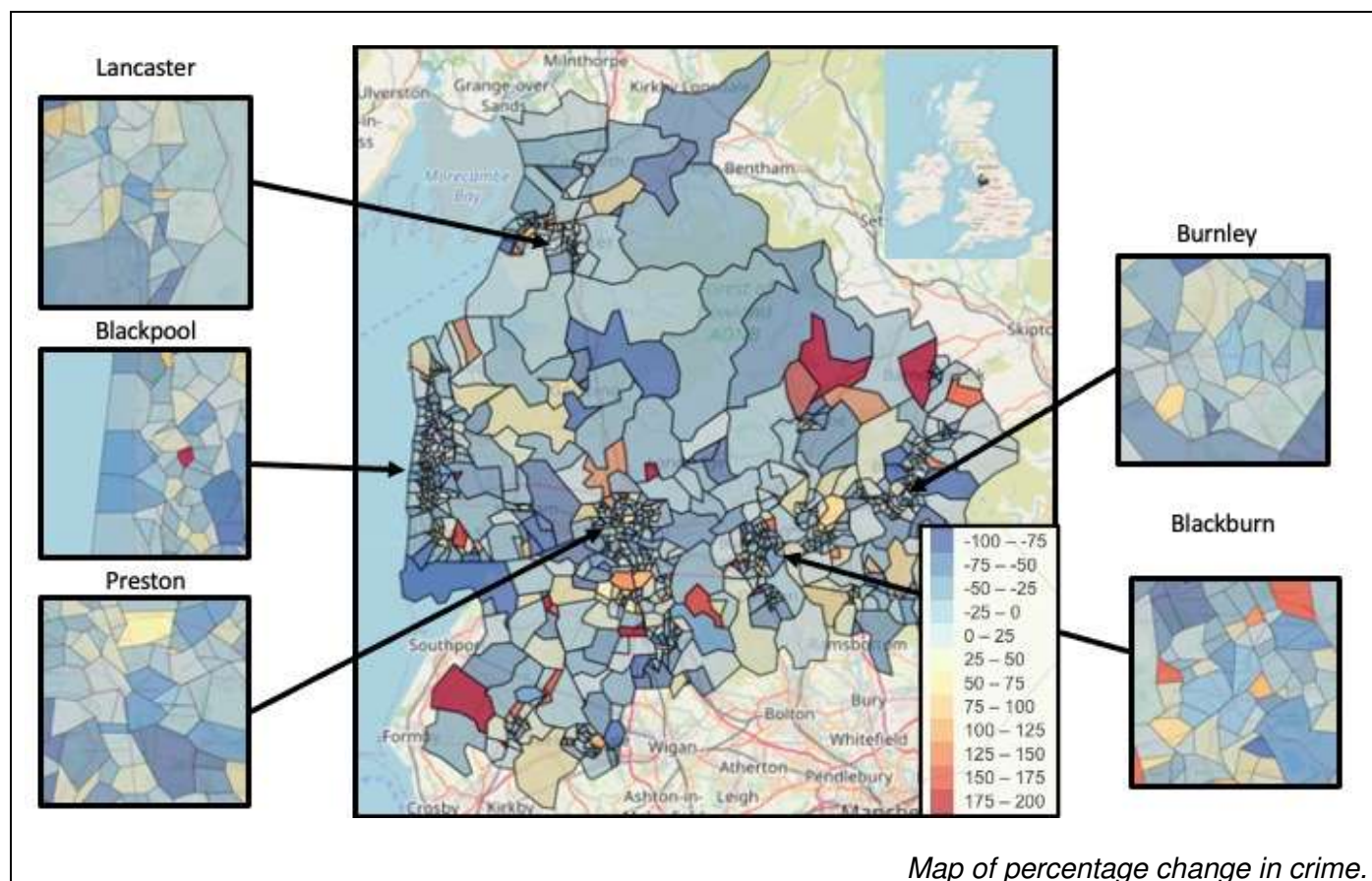
National Pattern



¹ University of Leeds

² Lancashire Constabulary

Lancashire Case Study



Map of percentage change in crime.

Bizarro World?

Nationally, small area (LSOAs) were ranked by recorded crime rate and grouped into deciles. Decile rates are changes relative to the rate expected based on the previous five years.

Key findings:

- Previously high-crime areas saw the largest crime declines.
- Previously-low-crime rate areas experienced crime increases.
- Urban centres saw the greatest crime drops in absolute (but not necessarily relative) terms.
- Public order crime increases likely reflect breaches - or perceived breaches - of lockdown rules. Some crime increases, including drugs and weapon offences, may reflect changes in police activity.

Source: data.police.uk for England, Wales and Northern Ireland; Lancashire Constabulary. Full maps at: <https://goofy-fermat-152b72.netlify.app/>

Reference as: Dixon, A, Halford, E., and G. Farrell (2020). Spatial distributive justice of crime in the covid-19 pandemic, *Statistical Bulletin on Crime and COVID-19 Issue 2*. Leeds: University of Leeds.

© The Authors (2020). DOI: <http://doi.org/10.5518/100/26> . ISSN: 2634-4424. This work is licensed under a Creative Commons (CC-BY 4.0).

This research was funded by the Economic and Social Research Council under the UKRI open call on covid-19 under grant ES/V00445X/1.